



Full wwPDB EM Validation Report ⓘ

Nov 19, 2022 – 11:37 PM EST

PDB ID : 3J2J
EMDB ID : EMD-5514
Title : Empty coxsackievirus A9 capsid
Authors : Shakeel, S.; Seitsonen, J.J.T.; Kajander, T.; Laurinmaki, P.; Hyypia, T.; Susi, P.; Butcher, S.J.
Deposited on : 2012-10-04
Resolution : 9.54 Å(reported)
Based on initial model : 1D4M

This is a Full wwPDB EM Validation Report for a publicly released PDB entry.

We welcome your comments at validation@mail.wwpdb.org

A user guide is available at

<https://www.wwpdb.org/validation/2017/EMValidationReportHelp>
with specific help available everywhere you see the ⓘ symbol.

The types of validation reports are described at

<http://www.wwpdb.org/validation/2017/FAQs#types>.

The following versions of software and data (see [references ⓘ](#)) were used in the production of this report:

EMDB validation analysis : 0.0.1.dev43
MolProbity : 4.02b-467
Percentile statistics : 20191225.v01 (using entries in the PDB archive December 25th 2019)
MapQ : 1.9.9
Ideal geometry (proteins) : Engh & Huber (2001)
Ideal geometry (DNA, RNA) : Parkinson et al. (1996)
Validation Pipeline (wwPDB-VP) : 2.31.3

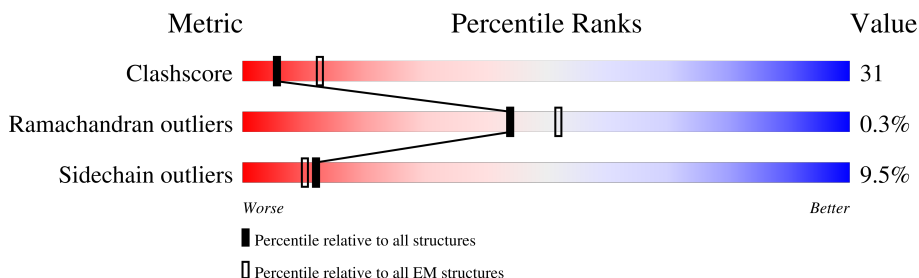
1 Overall quality at a glance

The following experimental techniques were used to determine the structure:

ELECTRON MICROSCOPY

The reported resolution of this entry is 9.54 Å.

Percentile scores (ranging between 0-100) for global validation metrics of the entry are shown in the following graphic. The table shows the number of entries on which the scores are based.



Metric	Whole archive (#Entries)	EM structures (#Entries)
Clashscore	158937	4297
Ramachandran outliers	154571	4023
Sidechain outliers	154315	3826

The table below summarises the geometric issues observed across the polymeric chains and their fit to the map. The red, orange, yellow and green segments of the bar indicate the fraction of residues that contain outliers for ≥ 3 , 2, 1 and 0 types of geometric quality criteria respectively. A grey segment represents the fraction of residues that are not modelled. The numeric value for each fraction is indicated below the corresponding segment, with a dot representing fractions $\leq 5\%$. The upper red bar (where present) indicates the fraction of residues that have poor fit to the EM map (all-atom inclusion $< 40\%$). The numeric value is given above the bar.

Mol	Chain	Length	Quality of chain
1	A	222	 66% 26% 8%
2	B	238	 73% 22% 5%
3	C	252	 83% 15% 2%

2 Entry composition

There are 3 unique types of molecules in this entry. The entry contains 5601 atoms, of which 0 are hydrogens and 0 are deuteriums.

In the tables below, the AltConf column contains the number of residues with at least one atom in alternate conformation and the Trace column contains the number of residues modelled with at most 2 atoms.

- Molecule 1 is a protein called Protein VP1.

Mol	Chain	Residues	Atoms					AltConf	Trace
1	A	222	Total	C	N	O	S	0	0
			1799	1152	308	329	10		

There are 3 discrepancies between the modelled and reference sequences:

Chain	Residue	Modelled	Actual	Comment	Reference
A	22	ASN	LYS	CONFLICT	UNP P21404
A	23	ASP	HIS	CONFLICT	UNP P21404
A	80	HIS	ARG	CONFLICT	UNP P21404

- Molecule 2 is a protein called Protein VP3.

Mol	Chain	Residues	Atoms					AltConf	Trace
2	B	238	Total	C	N	O	S	0	0
			1843	1173	302	350	18		

- Molecule 3 is a protein called Protein VP2.

Mol	Chain	Residues	Atoms					AltConf	Trace
3	C	252	Total	C	N	O	S	0	0
			1959	1239	332	372	16		

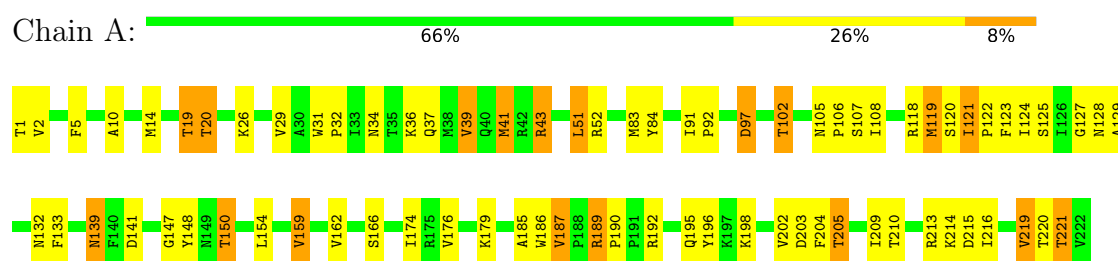
There is a discrepancy between the modelled and reference sequences:

Chain	Residue	Modelled	Actual	Comment	Reference
C	101	VAL	LEU	CONFLICT	UNP P21404

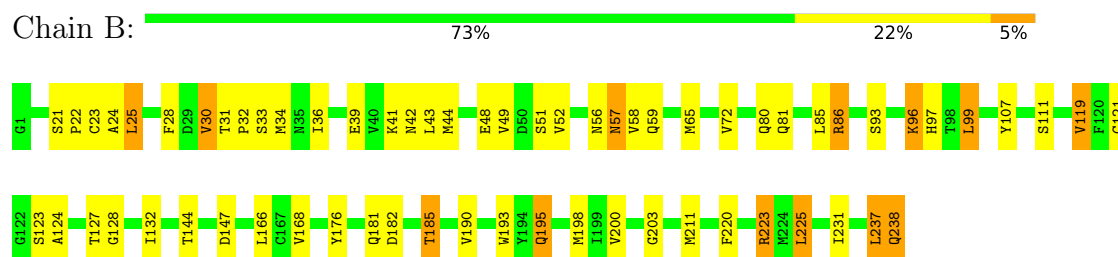
3 Residue-property plots

These plots are drawn for all protein, RNA, DNA and oligosaccharide chains in the entry. The first graphic for a chain summarises the proportions of the various outlier classes displayed in the second graphic. The second graphic shows the sequence view annotated by issues in geometry and atom inclusion in map density. Residues are color-coded according to the number of geometric quality criteria for which they contain at least one outlier: green = 0, yellow = 1, orange = 2 and red = 3 or more. A red diamond above a residue indicates a poor fit to the EM map for this residue (all-atom inclusion < 40%). Stretches of 2 or more consecutive residues without any outlier are shown as a green connector. Residues present in the sample, but not in the model, are shown in grey.

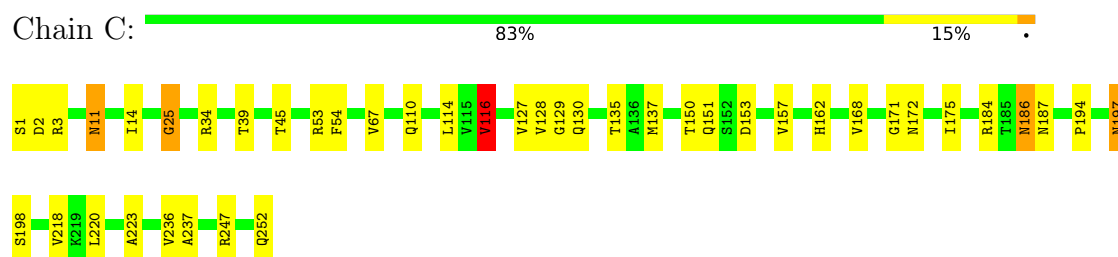
• Molecule 1: Protein VP1



• Molecule 2: Protein VP3



• Molecule 3: Protein VP2



4 Experimental information

Property	Value	Source
EM reconstruction method	SINGLE PARTICLE	Depositor
Imposed symmetry	POINT, I	Depositor
Number of particles used	1200	Depositor
Resolution determination method	FSC 0.5 CUT-OFF	Depositor
CTF correction method	whole micrograph	Depositor
Microscope	FEI TECNAI F20	Depositor
Voltage (kV)	200	Depositor
Electron dose ($e^-/\text{\AA}^2$)	Not provided	
Minimum defocus (nm)	830	Depositor
Maximum defocus (nm)	4120	Depositor
Magnification	62000	Depositor
Image detector	Not provided	
Maximum map value	32767.000	Depositor
Minimum map value	0.000	Depositor
Average map value	1849.604	Depositor
Map value standard deviation	5100.456	Depositor
Recommended contour level	3000.0	Depositor
Map size (\AA)	454.26, 454.26, 454.26	wwPDB
Map dimensions	201, 201, 201	wwPDB
Map angles ($^\circ$)	90.0, 90.0, 90.0	wwPDB
Pixel spacing (\AA)	2.26, 2.26, 2.26	Depositor

5 Model quality

5.1 Standard geometry

The Z score for a bond length (or angle) is the number of standard deviations the observed value is removed from the expected value. A bond length (or angle) with $|Z| > 5$ is considered an outlier worth inspection. RMSZ is the root-mean-square of all Z scores of the bond lengths (or angles).

Mol	Chain	Bond lengths		Bond angles	
		RMSZ	$\# Z > 5$	RMSZ	$\# Z > 5$
1	A	0.57	0/1855	0.81	0/2531
2	B	0.55	0/1892	0.80	0/2581
3	C	0.55	0/2009	0.81	2/2740 (0.1%)
All	All	0.56	0/5756	0.81	2/7852 (0.0%)

Chiral center outliers are detected by calculating the chiral volume of a chiral center and verifying if the center is modelled as a planar moiety or with the opposite hand. A planarity outlier is detected by checking planarity of atoms in a peptide group, atoms in a mainchain group or atoms of a sidechain that are expected to be planar.

Mol	Chain	#Chirality outliers	#Planarity outliers
3	C	0	1

There are no bond length outliers.

All (2) bond angle outliers are listed below:

Mol	Chain	Res	Type	Atoms	Z	Observed(°)	Ideal(°)
3	C	116	VAL	CB-CA-C	-5.86	100.27	111.40
3	C	186	ASN	CB-CA-C	-5.80	98.80	110.40

There are no chirality outliers.

All (1) planarity outliers are listed below:

Mol	Chain	Res	Type	Group
3	C	186	ASN	Mainchain

5.2 Too-close contacts

In the following table, the Non-H and H(model) columns list the number of non-hydrogen atoms and hydrogen atoms in the chain respectively. The H(added) column lists the number of hydrogen atoms added and optimized by MolProbity. The Clashes column lists the number of clashes within

the asymmetric unit, whereas Symm-Clashes lists symmetry-related clashes.

Mol	Chain	Non-H	H(model)	H(added)	Clashes	Symm-Clashes
1	A	1799	0	1754	272	0
2	B	1843	0	1799	269	0
3	C	1959	0	1881	64	0
All	All	5601	0	5434	338	0

The all-atom clashscore is defined as the number of clashes found per 1000 atoms (including hydrogen atoms). The all-atom clashscore for this structure is 31.

All (338) close contacts within the same asymmetric unit are listed below, sorted by their clash magnitude.

Atom-1	Atom-2	Interatomic distance (Å)	Clash overlap (Å)
1:A:119:MET:CE	2:B:24:ALA:CB	1.81	1.59
1:A:118:ARG:CD	2:B:21:SER:CB	1.79	1.57
1:A:118:ARG:CG	2:B:21:SER:CB	1.81	1.56
1:A:216:ILE:HB	2:B:58:VAL:CG1	1.38	1.54
1:A:118:ARG:CD	2:B:21:SER:HB3	1.30	1.51
1:A:198:LYS:CD	2:B:238:GLN:HE22	1.22	1.51
1:A:124:ILE:CG2	2:B:28:PHE:CE2	1.92	1.49
1:A:216:ILE:CD1	2:B:56:ASN:HD22	1.24	1.49
1:A:124:ILE:HG22	2:B:28:PHE:CE2	0.98	1.48
1:A:119:MET:CE	2:B:24:ALA:HB3	1.35	1.47
1:A:119:MET:HE3	2:B:24:ALA:CB	1.40	1.46
1:A:214:LYS:O	2:B:59:GLN:CB	1.64	1.46
2:B:124:ALA:CA	3:C:184:ARG:NH1	1.74	1.46
2:B:124:ALA:CA	3:C:184:ARG:HH11	1.21	1.44
1:A:124:ILE:HG22	2:B:28:PHE:CZ	1.53	1.43
1:A:118:ARG:HG2	2:B:21:SER:CB	1.36	1.42
1:A:204:PHE:O	3:C:128:VAL:CG1	1.64	1.42
1:A:216:ILE:N	2:B:58:VAL:HG12	1.11	1.41
1:A:216:ILE:CA	2:B:58:VAL:HG12	1.51	1.38
1:A:216:ILE:CD1	2:B:56:ASN:ND2	1.82	1.37
1:A:119:MET:HE3	2:B:24:ALA:CA	1.55	1.36
1:A:216:ILE:CB	2:B:58:VAL:CG1	2.03	1.35
1:A:118:ARG:CG	2:B:21:SER:OG	1.72	1.33
1:A:119:MET:HE3	2:B:24:ALA:N	1.41	1.32
1:A:122:PRO:HB2	2:B:30:VAL:CG2	1.58	1.32
1:A:198:LYS:HD3	2:B:238:GLN:NE2	1.40	1.31
1:A:198:LYS:CD	2:B:238:GLN:NE2	1.91	1.31
2:B:124:ALA:HA	3:C:184:ARG:NH1	1.00	1.30
1:A:216:ILE:N	2:B:58:VAL:CG1	1.93	1.29

Continued on next page...

Continued from previous page...

Atom-1	Atom-2	Interatomic distance (Å)	Clash overlap (Å)
1:A:52:ARG:NH1	2:B:33:SER:HA	1.46	1.28
1:A:124:ILE:CG2	2:B:28:PHE:CZ	2.13	1.25
1:A:214:LYS:C	2:B:59:GLN:HB2	1.57	1.24
1:A:52:ARG:CZ	2:B:33:SER:HA	1.66	1.24
1:A:216:ILE:CA	2:B:58:VAL:CG1	2.15	1.24
1:A:119:MET:CE	2:B:24:ALA:H	1.51	1.22
1:A:124:ILE:HG22	2:B:28:PHE:CD2	1.77	1.20
1:A:216:ILE:HD12	2:B:56:ASN:ND2	0.85	1.18
1:A:52:ARG:CZ	2:B:33:SER:CA	2.22	1.16
1:A:123:PHE:N	2:B:30:VAL:HG22	1.60	1.16
1:A:122:PRO:CB	2:B:30:VAL:HG23	1.74	1.16
1:A:118:ARG:HD3	2:B:21:SER:OG	1.44	1.15
1:A:186:TRP:CD1	2:B:36:ILE:O	2.00	1.15
1:A:118:ARG:HG2	2:B:21:SER:OG	1.36	1.13
1:A:118:ARG:CG	2:B:21:SER:HB2	1.60	1.11
1:A:213:ARG:HH21	2:B:57:ASN:ND2	1.47	1.11
1:A:52:ARG:NH2	2:B:33:SER:N	1.99	1.11
2:B:123:SER:HB3	3:C:110:GLN:NE2	1.66	1.10
1:A:216:ILE:CB	2:B:58:VAL:HG11	1.75	1.10
1:A:118:ARG:CD	2:B:21:SER:OG	1.86	1.09
1:A:127:GLY:O	2:B:31:THR:HG21	1.53	1.09
1:A:204:PHE:O	3:C:128:VAL:HG11	1.36	1.08
1:A:1:THR:HA	2:B:41:LYS:O	1.53	1.07
1:A:119:MET:CE	2:B:24:ALA:HB2	1.83	1.06
1:A:122:PRO:HG2	2:B:28:PHE:CD2	1.90	1.05
1:A:204:PHE:O	3:C:128:VAL:HG12	1.53	1.05
2:B:124:ALA:HB2	3:C:184:ARG:HG3	1.33	1.05
1:A:213:ARG:CZ	2:B:57:ASN:HD21	1.70	1.05
1:A:198:LYS:HD2	2:B:238:GLN:NE2	1.69	1.04
1:A:216:ILE:HB	2:B:58:VAL:HG13	1.37	1.03
1:A:213:ARG:NH2	2:B:57:ASN:ND2	2.07	1.02
1:A:216:ILE:HD12	2:B:56:ASN:CG	1.79	1.02
1:A:118:ARG:O	2:B:22:PRO:HG2	1.60	1.02
1:A:213:ARG:NH2	2:B:57:ASN:HD21	1.57	1.02
1:A:213:ARG:HE	2:B:57:ASN:ND2	1.56	1.01
1:A:52:ARG:NH1	2:B:33:SER:CA	2.22	1.01
1:A:122:PRO:HG2	2:B:28:PHE:HD2	1.18	1.01
1:A:123:PHE:N	2:B:30:VAL:CG2	2.23	1.01
1:A:118:ARG:HG2	2:B:21:SER:HB2	1.06	1.00
2:B:123:SER:CB	3:C:110:GLN:HE21	1.73	1.00
1:A:216:ILE:H	2:B:58:VAL:CG1	1.75	1.00

Continued on next page...

Continued from previous page...

Atom-1	Atom-2	Interatomic distance (Å)	Clash overlap (Å)
2:B:123:SER:HB3	3:C:110:GLN:HE21	0.85	0.98
1:A:186:TRP:CD2	2:B:36:ILE:HB	1.99	0.98
1:A:119:MET:HE1	2:B:24:ALA:CB	1.64	0.98
1:A:216:ILE:HG13	2:B:56:ASN:HA	1.46	0.98
1:A:120:SER:H	2:B:23:CYS:HA	1.26	0.97
1:A:214:LYS:O	2:B:59:GLN:HB2	0.79	0.97
2:B:121:CYS:HB3	3:C:218:VAL:HG21	1.44	0.97
1:A:118:ARG:HD3	2:B:21:SER:CB	1.80	0.97
1:A:124:ILE:CB	2:B:28:PHE:CZ	2.48	0.96
1:A:186:TRP:CG	2:B:36:ILE:HB	2.00	0.96
1:A:216:ILE:CG1	2:B:56:ASN:HD22	1.80	0.95
1:A:216:ILE:HB	2:B:58:VAL:HG11	0.98	0.94
1:A:119:MET:HB2	2:B:24:ALA:N	1.83	0.94
1:A:195:GLN:HE22	2:B:231:ILE:HD12	1.30	0.94
1:A:120:SER:N	2:B:23:CYS:HA	1.84	0.93
1:A:213:ARG:NE	2:B:57:ASN:ND2	2.16	0.93
1:A:118:ARG:HG2	2:B:21:SER:HG	1.29	0.93
1:A:190:PRO:HB2	3:C:168:VAL:CG1	1.99	0.92
1:A:216:ILE:CB	2:B:58:VAL:HG13	1.96	0.91
1:A:1:THR:CA	2:B:41:LYS:O	2.19	0.91
1:A:190:PRO:HB2	3:C:168:VAL:HG12	1.49	0.91
1:A:119:MET:CE	2:B:24:ALA:N	2.15	0.90
1:A:52:ARG:NH1	2:B:32:PRO:O	2.04	0.90
1:A:52:ARG:HH12	2:B:32:PRO:C	1.74	0.90
1:A:186:TRP:CE2	2:B:36:ILE:HB	2.08	0.89
1:A:52:ARG:HH22	2:B:33:SER:N	1.66	0.89
1:A:186:TRP:CE3	2:B:36:ILE:HD12	2.08	0.89
1:A:186:TRP:CD1	2:B:36:ILE:HB	2.07	0.88
1:A:204:PHE:C	3:C:128:VAL:HG11	1.94	0.88
1:A:118:ARG:HD2	2:B:21:SER:CB	1.70	0.88
1:A:186:TRP:NE1	2:B:36:ILE:O	2.07	0.88
1:A:119:MET:HE3	2:B:24:ALA:HB2	1.43	0.88
1:A:123:PHE:H	2:B:30:VAL:CG2	1.83	0.87
2:B:124:ALA:CA	3:C:184:ARG:HH12	1.81	0.87
2:B:124:ALA:CB	3:C:184:ARG:NH1	2.39	0.86
1:A:124:ILE:HB	2:B:28:PHE:CZ	2.09	0.85
1:A:119:MET:HE2	2:B:24:ALA:H	1.38	0.85
1:A:213:ARG:HH21	2:B:57:ASN:HD22	1.24	0.85
1:A:195:GLN:NE2	2:B:231:ILE:HD12	1.91	0.85
1:A:119:MET:SD	2:B:24:ALA:HB2	2.16	0.84
1:A:106:PRO:HG3	2:B:25:LEU:HD12	1.59	0.84

Continued on next page...

Continued from previous page...

Atom-1	Atom-2	Interatomic distance (Å)	Clash overlap (Å)
1:A:216:ILE:CG1	2:B:56:ASN:HA	2.07	0.84
1:A:121:ILE:HG12	2:B:25:LEU:HD22	1.59	0.84
1:A:213:ARG:NE	2:B:57:ASN:HD21	1.71	0.84
1:A:122:PRO:HB2	2:B:30:VAL:HG23	0.84	0.84
1:A:121:ILE:CG1	2:B:25:LEU:HD22	2.09	0.83
2:B:124:ALA:C	3:C:184:ARG:HH12	1.82	0.83
1:A:185:ALA:O	2:B:39:GLU:HA	1.78	0.83
1:A:34:ASN:HD21	1:A:37:GLN:HE21	1.27	0.82
1:A:106:PRO:HB2	2:B:24:ALA:O	1.79	0.82
1:A:204:PHE:O	3:C:128:VAL:CB	2.26	0.82
1:A:83:MET:SD	1:A:102:THR:HG23	2.20	0.81
1:A:52:ARG:CZ	2:B:33:SER:N	2.41	0.81
2:B:124:ALA:CB	3:C:184:ARG:HG3	2.10	0.81
1:A:198:LYS:HD3	2:B:238:GLN:HE22	0.64	0.80
1:A:118:ARG:CB	2:B:21:SER:HB2	2.12	0.80
1:A:147:GLY:O	1:A:150:THR:HG23	1.81	0.80
1:A:213:ARG:HE	2:B:57:ASN:CG	1.84	0.80
1:A:52:ARG:HH22	2:B:32:PRO:C	1.85	0.79
1:A:118:ARG:HD2	2:B:21:SER:HB3	0.80	0.79
2:B:195:GLN:HE21	2:B:195:GLN:HA	1.47	0.79
1:A:186:TRP:CD1	2:B:36:ILE:C	2.56	0.79
1:A:216:ILE:CD1	2:B:56:ASN:HA	2.12	0.79
1:A:214:LYS:HA	2:B:59:GLN:CG	2.05	0.79
1:A:123:PHE:CE2	2:B:31:THR:HB	2.19	0.78
1:A:124:ILE:CB	2:B:28:PHE:CE2	2.67	0.78
2:B:42:ASN:HD22	2:B:44:MET:H	1.31	0.76
1:A:118:ARG:CG	2:B:21:SER:HG	1.90	0.76
2:B:65:MET:SD	3:C:162:HIS:HB3	2.26	0.76
1:A:215:ASP:C	2:B:58:VAL:HG12	2.04	0.75
1:A:119:MET:HE1	2:B:24:ALA:HB3	0.75	0.75
2:B:124:ALA:C	3:C:184:ARG:NH1	2.38	0.75
2:B:121:CYS:CB	3:C:218:VAL:HG21	2.17	0.74
1:A:216:ILE:HA	2:B:58:VAL:HG12	1.64	0.74
1:A:124:ILE:HB	2:B:28:PHE:HZ	1.51	0.73
1:A:119:MET:HB2	2:B:24:ALA:H	1.48	0.73
1:A:123:PHE:CA	2:B:30:VAL:HG22	2.18	0.73
1:A:120:SER:H	2:B:23:CYS:CA	2.01	0.73
1:A:119:MET:HG2	2:B:24:ALA:HB2	1.70	0.72
1:A:123:PHE:H	2:B:30:VAL:HG21	1.53	0.72
2:B:51:SER:CB	3:C:172:ASN:OD1	2.37	0.72
1:A:186:TRP:HD1	2:B:36:ILE:O	1.71	0.72

Continued on next page...

Continued from previous page...

Atom-1	Atom-2	Interatomic distance (Å)	Clash overlap (Å)
1:A:52:ARG:NH1	2:B:32:PRO:C	2.41	0.71
1:A:34:ASN:HD21	1:A:37:GLN:NE2	1.88	0.71
1:A:128:ASN:HB3	2:B:34:MET:CB	2.19	0.71
2:B:107:TYR:CE2	2:B:225:LEU:HD13	2.26	0.70
1:A:210:THR:OG1	2:B:97:HIS:HD2	1.74	0.70
1:A:198:LYS:HD2	2:B:238:GLN:HE21	1.54	0.70
1:A:123:PHE:O	2:B:30:VAL:HA	1.91	0.70
1:A:214:LYS:CA	2:B:59:GLN:HB2	2.21	0.70
1:A:186:TRP:CZ3	2:B:36:ILE:HD12	2.26	0.70
1:A:119:MET:CG	2:B:24:ALA:HB2	2.22	0.69
2:B:57:ASN:HD22	2:B:57:ASN:H	1.39	0.69
1:A:52:ARG:NH2	2:B:33:SER:CA	2.49	0.69
1:A:119:MET:HB2	2:B:23:CYS:CA	2.22	0.69
1:A:102:THR:HG21	1:A:107:SER:OG	1.93	0.68
1:A:122:PRO:CB	2:B:30:VAL:CG2	2.50	0.68
1:A:122:PRO:CG	2:B:28:PHE:HB3	2.23	0.68
1:A:119:MET:HB2	2:B:23:CYS:HA	1.75	0.68
1:A:209:ILE:HD11	3:C:162:HIS:HD2	1.59	0.68
1:A:19:THR:HG21	1:A:166:SER:OG	1.93	0.68
1:A:128:ASN:HB3	2:B:34:MET:HB2	1.75	0.67
2:B:51:SER:HB2	3:C:172:ASN:OD1	1.94	0.67
1:A:196:TYR:HB2	2:B:237:LEU:HD21	1.77	0.67
3:C:151:GLN:HE21	3:C:153:ASP:H	1.42	0.67
1:A:118:ARG:O	2:B:22:PRO:CG	2.41	0.67
1:A:213:ARG:CZ	2:B:57:ASN:ND2	2.40	0.67
1:A:119:MET:SD	2:B:24:ALA:CB	2.74	0.66
1:A:123:PHE:HB3	2:B:30:VAL:HG13	1.76	0.66
1:A:106:PRO:CB	2:B:24:ALA:O	2.42	0.66
1:A:124:ILE:HA	2:B:28:PHE:HE2	1.61	0.66
1:A:1:THR:HA	2:B:42:ASN:HA	1.77	0.66
2:B:144:THR:HG23	2:B:147:ASP:H	1.60	0.66
3:C:114:LEU:HG	3:C:116:VAL:HG22	1.79	0.65
1:A:122:PRO:HG3	2:B:28:PHE:HB3	1.79	0.64
1:A:186:TRP:CG	2:B:36:ILE:CB	2.79	0.64
1:A:203:ASP:OD2	3:C:129:GLY:HA2	1.97	0.64
1:A:52:ARG:CZ	2:B:33:SER:CB	2.76	0.64
1:A:186:TRP:CD1	2:B:36:ILE:CB	2.80	0.63
1:A:122:PRO:CG	2:B:28:PHE:CD2	2.76	0.63
1:A:214:LYS:O	2:B:59:GLN:HB3	1.89	0.63
2:B:124:ALA:CB	3:C:184:ARG:HH11	2.00	0.63
1:A:119:MET:HB2	2:B:23:CYS:C	2.19	0.62

Continued on next page...

Continued from previous page...

Atom-1	Atom-2	Interatomic distance (Å)	Clash overlap (Å)
1:A:186:TRP:NE1	2:B:36:ILE:HB	2.12	0.62
1:A:190:PRO:CB	3:C:168:VAL:CG1	2.75	0.62
1:A:204:PHE:O	3:C:128:VAL:HB	1.99	0.62
1:A:19:THR:CG2	1:A:20:THR:HG22	2.29	0.62
1:A:52:ARG:NH1	2:B:33:SER:N	2.48	0.61
1:A:119:MET:CE	2:B:24:ALA:CA	2.39	0.61
1:A:190:PRO:HG2	3:C:168:VAL:CB	2.31	0.61
1:A:2:VAL:N	2:B:41:LYS:O	2.33	0.61
3:C:11:ASN:HD21	3:C:53:ARG:HE	1.49	0.60
1:A:121:ILE:HG13	2:B:25:LEU:HD22	1.81	0.60
1:A:19:THR:HG22	1:A:20:THR:HG22	1.83	0.60
1:A:102:THR:HG22	1:A:105:ASN:HB2	1.82	0.60
2:B:132:ILE:HG22	2:B:166:LEU:HD22	1.84	0.60
1:A:119:MET:CB	2:B:24:ALA:N	2.62	0.59
1:A:190:PRO:CG	3:C:168:VAL:HG11	2.32	0.59
1:A:216:ILE:H	2:B:58:VAL:HG11	1.62	0.59
1:A:219:VAL:HG22	2:B:86:ARG:HG2	1.84	0.59
1:A:122:PRO:CG	2:B:28:PHE:HD2	2.03	0.59
1:A:139:ASN:N	1:A:139:ASN:HD22	2.01	0.59
1:A:214:LYS:HA	2:B:59:GLN:CB	2.33	0.58
2:B:51:SER:HB3	3:C:172:ASN:OD1	2.02	0.58
2:B:81:GLN:HB2	2:B:193:TRP:CZ3	2.39	0.58
1:A:52:ARG:NH2	2:B:32:PRO:C	2.50	0.58
1:A:10:ALA:HB3	1:A:41:MET:HG2	1.85	0.58
1:A:128:ASN:HB3	2:B:34:MET:HB3	1.84	0.57
1:A:39:VAL:HG22	1:A:196:TYR:HD2	1.68	0.57
1:A:186:TRP:CG	2:B:36:ILE:CG2	2.87	0.57
2:B:121:CYS:HB3	3:C:218:VAL:CG2	2.26	0.57
1:A:31:TRP:HE1	1:A:37:GLN:HE22	1.53	0.56
1:A:216:ILE:CD1	2:B:56:ASN:CB	2.83	0.56
2:B:237:LEU:O	2:B:238:GLN:HB2	2.03	0.56
3:C:127:VAL:HG22	3:C:130:GLN:HB2	1.86	0.56
2:B:85:LEU:CD1	2:B:190:VAL:HB	2.35	0.56
1:A:190:PRO:HG2	3:C:168:VAL:HB	1.87	0.56
2:B:182:ASP:OD2	2:B:185:THR:HB	2.05	0.56
2:B:93:SER:HA	2:B:96:LYS:HG2	1.88	0.56
1:A:124:ILE:HA	2:B:28:PHE:CE2	2.41	0.55
2:B:123:SER:CB	3:C:110:GLN:NE2	2.49	0.55
1:A:43:ARG:NH1	1:A:192:ARG:O	2.39	0.55
1:A:123:PHE:C	2:B:30:VAL:HG22	2.27	0.55
1:A:108:ILE:HD11	1:A:119:MET:HG2	1.89	0.55

Continued on next page...

Continued from previous page...

Atom-1	Atom-2	Interatomic distance (Å)	Clash overlap (Å)
1:A:124:ILE:CA	2:B:28:PHE:CE2	2.90	0.55
2:B:49:VAL:HG11	3:C:175:ILE:HG23	1.89	0.55
1:A:51:LEU:HD22	1:A:132:ASN:HD21	1.71	0.55
1:A:36:LYS:HE3	1:A:148:TYR:CE2	2.42	0.54
1:A:124:ILE:CG2	2:B:28:PHE:CD2	2.61	0.54
1:A:216:ILE:HD11	2:B:56:ASN:CB	2.37	0.54
2:B:85:LEU:HD11	2:B:190:VAL:HB	1.90	0.54
1:A:124:ILE:HG21	2:B:28:PHE:CZ	2.34	0.54
1:A:29:VAL:HG13	1:A:159:VAL:HG13	1.87	0.54
1:A:205:THR:HA	3:C:128:VAL:HG11	1.90	0.53
1:A:5:PHE:CD1	2:B:43:LEU:HD11	2.43	0.53
1:A:39:VAL:HG23	2:B:237:LEU:CD2	2.38	0.53
1:A:198:LYS:HA	2:B:238:GLN:OE1	2.07	0.53
2:B:195:GLN:HA	2:B:195:GLN:NE2	2.20	0.53
1:A:106:PRO:CG	2:B:25:LEU:HD12	2.35	0.53
1:A:216:ILE:CD1	2:B:56:ASN:CA	2.84	0.53
1:A:123:PHE:CZ	1:A:125:SER:HB3	2.45	0.52
1:A:39:VAL:HG22	1:A:196:TYR:CD2	2.44	0.52
1:A:216:ILE:HD11	2:B:56:ASN:HA	1.89	0.52
1:A:119:MET:CE	1:A:121:ILE:HD11	2.40	0.52
2:B:51:SER:HB3	2:B:99:LEU:HD22	1.90	0.52
1:A:190:PRO:HG2	3:C:168:VAL:HG11	1.92	0.51
1:A:123:PHE:O	2:B:30:VAL:HG22	2.10	0.51
1:A:205:THR:CA	3:C:128:VAL:HG11	2.40	0.51
1:A:196:TYR:HB2	2:B:237:LEU:CD2	2.41	0.51
1:A:118:ARG:HG3	2:B:21:SER:OG	1.97	0.51
1:A:10:ALA:CB	1:A:41:MET:HG2	2.41	0.50
1:A:122:PRO:CD	2:B:28:PHE:HB3	2.42	0.49
1:A:106:PRO:HG3	2:B:25:LEU:CD1	2.35	0.49
1:A:127:GLY:O	2:B:31:THR:CG2	2.42	0.49
1:A:186:TRP:CB	2:B:36:ILE:CG2	2.91	0.49
1:A:214:LYS:HA	2:B:59:GLN:HB2	1.90	0.49
3:C:197:ASN:ND2	3:C:198:SER:H	2.10	0.49
1:A:119:MET:HE1	1:A:121:ILE:HD11	1.93	0.48
1:A:190:PRO:CG	3:C:168:VAL:CG1	2.91	0.48
1:A:84:TYR:CD2	2:B:25:LEU:HD11	2.48	0.48
1:A:214:LYS:O	2:B:59:GLN:N	2.46	0.48
2:B:123:SER:N	3:C:110:GLN:NE2	2.62	0.48
1:A:122:PRO:HB2	2:B:30:VAL:HG21	1.74	0.48
1:A:124:ILE:CG2	2:B:28:PHE:CE1	2.90	0.48
1:A:186:TRP:CD2	2:B:36:ILE:HD12	2.48	0.48

Continued on next page...

Continued from previous page...

Atom-1	Atom-2	Interatomic distance (Å)	Clash overlap (Å)
1:A:190:PRO:CB	3:C:168:VAL:HB	2.43	0.48
1:A:52:ARG:NH2	2:B:33:SER:HB2	2.29	0.47
1:A:119:MET:CB	2:B:23:CYS:CA	2.92	0.47
1:A:203:ASP:OD2	3:C:129:GLY:CA	2.61	0.47
2:B:182:ASP:H	2:B:185:THR:HG22	1.79	0.47
1:A:31:TRP:HE1	1:A:37:GLN:NE2	2.11	0.47
1:A:190:PRO:HG2	3:C:168:VAL:CG1	2.44	0.47
1:A:19:THR:CG2	1:A:166:SER:OG	2.60	0.47
1:A:129:ALA:HB2	2:B:36:ILE:HD11	1.96	0.47
3:C:1:SER:HB3	3:C:3:ARG:HG2	1.97	0.47
1:A:210:THR:OG1	2:B:97:HIS:CD2	2.60	0.47
2:B:144:THR:HG22	2:B:147:ASP:CG	2.34	0.47
2:B:44:MET:O	2:B:48:GLU:HG3	2.15	0.46
1:A:190:PRO:CG	3:C:168:VAL:HB	2.46	0.46
1:A:220:THR:HG22	1:A:221:THR:H	1.81	0.46
2:B:121:CYS:SG	3:C:218:VAL:HG21	2.56	0.45
1:A:190:PRO:HD2	3:C:168:VAL:HG11	1.99	0.45
1:A:216:ILE:HD11	2:B:56:ASN:CA	2.44	0.45
3:C:11:ASN:HD21	3:C:53:ARG:HH21	1.63	0.45
3:C:197:ASN:HD22	3:C:198:SER:H	1.64	0.45
1:A:186:TRP:HB3	2:B:36:ILE:HG22	1.98	0.45
2:B:181:GLN:HG2	2:B:185:THR:CG2	2.48	0.44
1:A:214:LYS:O	2:B:59:GLN:CA	2.55	0.44
2:B:176:TYR:CZ	2:B:223:ARG:HD3	2.52	0.44
3:C:11:ASN:N	3:C:11:ASN:HD22	2.15	0.44
1:A:128:ASN:CB	2:B:34:MET:HB2	2.46	0.44
3:C:25:GLY:HA3	3:C:194:PRO:HD3	2.00	0.44
1:A:84:TYR:HB3	1:A:106:PRO:HG2	1.99	0.44
2:B:119:VAL:HG13	2:B:211:MET:HB2	2.00	0.44
1:A:216:ILE:HD12	2:B:56:ASN:HD22	0.61	0.43
2:B:124:ALA:HB1	3:C:184:ARG:NH1	2.27	0.43
3:C:11:ASN:HD22	3:C:11:ASN:H	1.64	0.43
1:A:216:ILE:CG1	2:B:58:VAL:HG13	2.47	0.43
2:B:127:THR:HG22	2:B:128:GLY:N	2.34	0.43
1:A:216:ILE:HA	2:B:58:VAL:CG1	2.28	0.43
1:A:198:LYS:HA	2:B:238:GLN:NE2	2.34	0.43
2:B:107:TYR:CZ	2:B:225:LEU:HD13	2.54	0.43
2:B:203:GLY:O	3:C:223:ALA:HB2	2.19	0.42
3:C:11:ASN:HD21	3:C:53:ARG:NE	2.13	0.42
1:A:52:ARG:NH2	2:B:33:SER:CB	2.82	0.42
2:B:127:THR:O	2:B:198:MET:HA	2.19	0.42

Continued on next page...

Continued from previous page...

Atom-1	Atom-2	Interatomic distance (Å)	Clash overlap (Å)
2:B:111:SER:O	2:B:220:PHE:HA	2.19	0.42
1:A:195:GLN:NE2	2:B:231:ILE:CD1	2.73	0.42
1:A:92:PRO:HA	1:A:97:ASP:OD1	2.20	0.42
1:A:31:TRP:HA	1:A:32:PRO:HD3	1.85	0.41
2:B:52:VAL:HG23	3:C:171:GLY:O	2.20	0.41
1:A:133:PHE:CE1	1:A:189:ARG:HD2	2.55	0.41
1:A:123:PHE:HE2	2:B:31:THR:HB	1.77	0.41
1:A:129:ALA:CB	2:B:36:ILE:HD11	2.50	0.41
2:B:124:ALA:HA	3:C:184:ARG:HH11	0.39	0.41
2:B:85:LEU:HD12	2:B:190:VAL:HB	2.01	0.41
1:A:219:VAL:O	2:B:86:ARG:CZ	2.68	0.41
1:A:91:ILE:HA	1:A:92:PRO:HD3	1.95	0.41
1:A:119:MET:CB	2:B:23:CYS:HA	2.48	0.41
1:A:14:MET:HA	1:A:174:ILE:O	2.20	0.41
1:A:118:ARG:HB3	2:B:21:SER:HB2	1.98	0.41
1:A:1:THR:CA	2:B:42:ASN:HA	2.49	0.41
1:A:122:PRO:C	2:B:30:VAL:CG2	2.86	0.40
1:A:52:ARG:NH2	2:B:33:SER:H	2.06	0.40
3:C:54:PHE:CD1	3:C:237:ALA:HB2	2.56	0.40
1:A:52:ARG:CZ	2:B:32:PRO:C	2.82	0.40
1:A:123:PHE:HB3	2:B:30:VAL:CG1	2.45	0.40
1:A:187:VAL:HG22	1:A:187:VAL:O	2.22	0.40

There are no symmetry-related clashes.

5.3 Torsion angles [i](#)

5.3.1 Protein backbone [i](#)

In the following table, the Percentiles column shows the percent Ramachandran outliers of the chain as a percentile score with respect to all PDB entries followed by that with respect to all EM entries.

The Analysed column shows the number of residues for which the backbone conformation was analysed, and the total number of residues.

Mol	Chain	Analysed	Favoured	Allowed	Outliers	Percentiles	
1	A	220/222 (99%)	207 (94%)	12 (6%)	1 (0%)	29	69
2	B	236/238 (99%)	228 (97%)	8 (3%)	0	100	100
3	C	250/252 (99%)	227 (91%)	22 (9%)	1 (0%)	34	72

Continued on next page...

Continued from previous page...

Mol	Chain	Analysed	Favoured	Allowed	Outliers	Percentiles
All	All	706/712 (99%)	662 (94%)	42 (6%)	2 (0%)	44 77

All (2) Ramachandran outliers are listed below:

Mol	Chain	Res	Type
1	A	162	VAL
3	C	25	GLY

5.3.2 Protein sidechains ⓘ

In the following table, the Percentiles column shows the percent sidechain outliers of the chain as a percentile score with respect to all PDB entries followed by that with respect to all EM entries.

The Analysed column shows the number of residues for which the sidechain conformation was analysed, and the total number of residues.

Mol	Chain	Analysed	Rotameric	Outliers	Percentiles
1	A	201/201 (100%)	177 (88%)	24 (12%)	5 20
2	B	211/211 (100%)	194 (92%)	17 (8%)	11 35
3	C	209/209 (100%)	191 (91%)	18 (9%)	10 32
All	All	621/621 (100%)	562 (90%)	59 (10%)	12 27

All (59) residues with a non-rotameric sidechain are listed below:

Mol	Chain	Res	Type
1	A	19	THR
1	A	20	THR
1	A	26	LYS
1	A	39	VAL
1	A	41	MET
1	A	43	ARG
1	A	51	LEU
1	A	97	ASP
1	A	102	THR
1	A	119	MET
1	A	121	ILE
1	A	139	ASN
1	A	141	ASP
1	A	150	THR

Continued on next page...

Continued from previous page...

Mol	Chain	Res	Type
1	A	154	LEU
1	A	159	VAL
1	A	176	VAL
1	A	179	LYS
1	A	187	VAL
1	A	189	ARG
1	A	202	VAL
1	A	205	THR
1	A	219	VAL
1	A	221	THR
2	B	25	LEU
2	B	30	VAL
2	B	57	ASN
2	B	72	VAL
2	B	80	GLN
2	B	86	ARG
2	B	96	LYS
2	B	99	LEU
2	B	119	VAL
2	B	168	VAL
2	B	185	THR
2	B	195	GLN
2	B	200	VAL
2	B	223	ARG
2	B	225	LEU
2	B	237	LEU
2	B	238	GLN
3	C	2	ASP
3	C	11	ASN
3	C	14	ILE
3	C	34	ARG
3	C	39	THR
3	C	45	THR
3	C	67	VAL
3	C	116	VAL
3	C	135	THR
3	C	137	MET
3	C	150	THR
3	C	157	VAL
3	C	187	ASN
3	C	197	ASN
3	C	220	LEU

Continued on next page...

Continued from previous page...

Mol	Chain	Res	Type
3	C	236	VAL
3	C	247	ARG
3	C	252	GLN

Sometimes sidechains can be flipped to improve hydrogen bonding and reduce clashes. All (23) such sidechains are listed below:

Mol	Chain	Res	Type
1	A	37	GLN
1	A	132	ASN
1	A	139	ASN
1	A	142	GLN
1	A	152	ASN
1	A	195	GLN
2	B	12	GLN
2	B	35	ASN
2	B	42	ASN
2	B	56	ASN
2	B	57	ASN
2	B	97	HIS
2	B	195	GLN
2	B	206	ASN
2	B	238	GLN
3	C	11	ASN
3	C	43	GLN
3	C	110	GLN
3	C	151	GLN
3	C	154	GLN
3	C	162	HIS
3	C	163	ASN
3	C	197	ASN

5.3.3 RNA ⓘ

There are no RNA molecules in this entry.

5.4 Non-standard residues in protein, DNA, RNA chains ⓘ

There are no non-standard protein/DNA/RNA residues in this entry.

5.5 Carbohydrates [i](#)

There are no monosaccharides in this entry.

5.6 Ligand geometry [i](#)

There are no ligands in this entry.

5.7 Other polymers [i](#)

There are no such residues in this entry.

5.8 Polymer linkage issues [i](#)

There are no chain breaks in this entry.

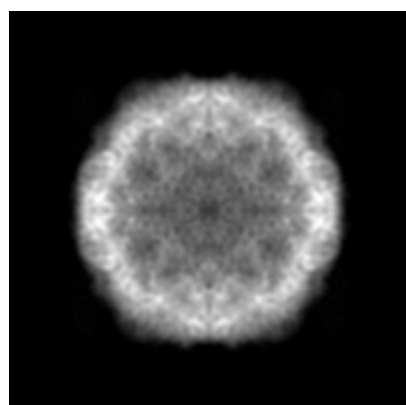
6 Map visualisation [i](#)

This section contains visualisations of the EMDB entry EMD-5514. These allow visual inspection of the internal detail of the map and identification of artifacts.

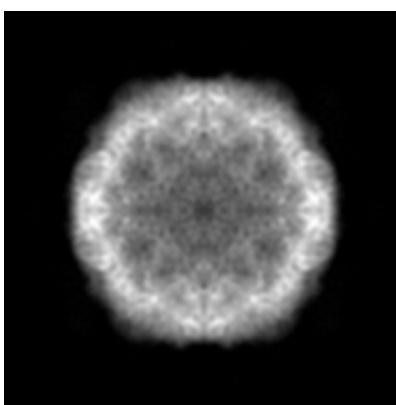
No raw map or half-maps were deposited for this entry and therefore no images, graphs, etc. pertaining to the raw map can be shown.

6.1 Orthogonal projections [i](#)

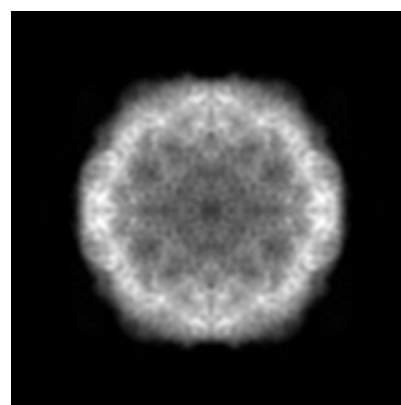
6.1.1 Primary map



X



Y

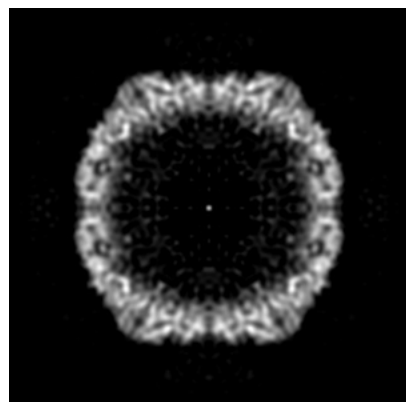


Z

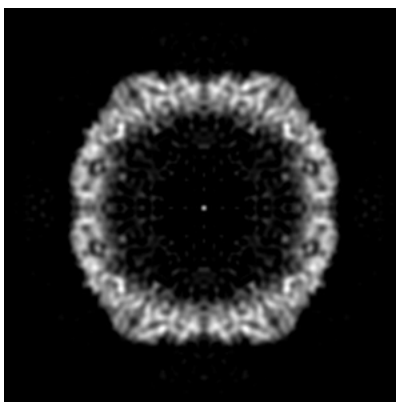
The images above show the map projected in three orthogonal directions.

6.2 Central slices [i](#)

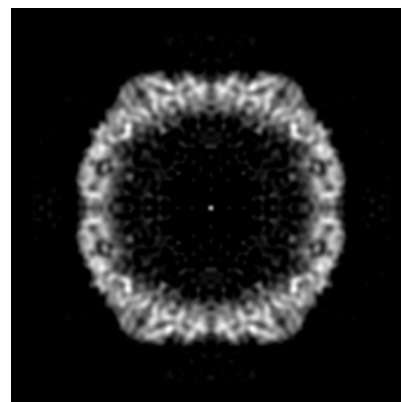
6.2.1 Primary map



X Index: 100



Y Index: 100

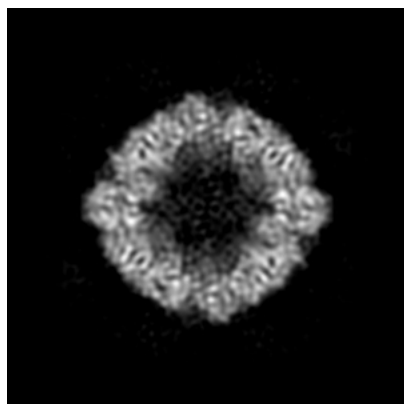


Z Index: 100

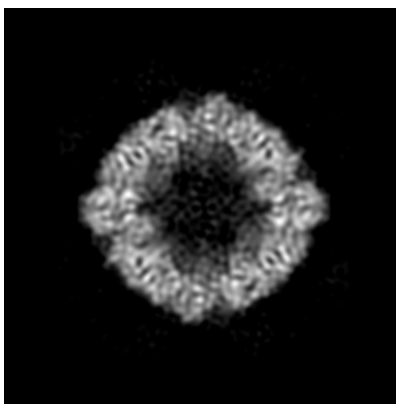
The images above show central slices of the map in three orthogonal directions.

6.3 Largest variance slices [i](#)

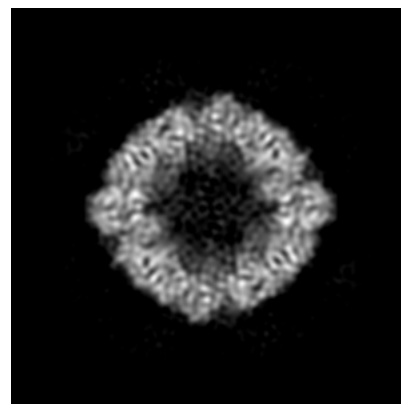
6.3.1 Primary map



X Index: 143



Y Index: 57

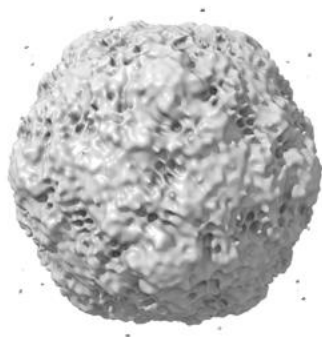


Z Index: 57

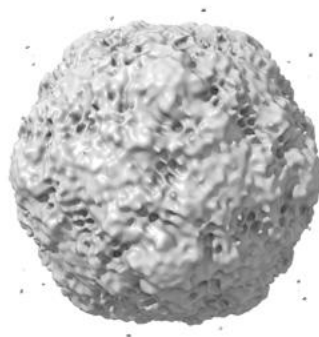
The images above show the largest variance slices of the map in three orthogonal directions.

6.4 Orthogonal surface views [i](#)

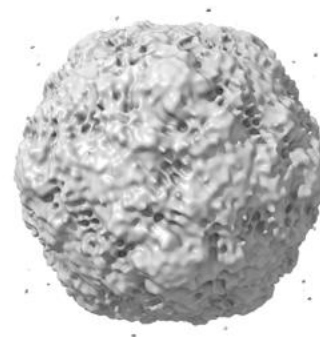
6.4.1 Primary map



X



Y



Z

The images above show the 3D surface view of the map at the recommended contour level 3000.0. These images, in conjunction with the slice images, may facilitate assessment of whether an appropriate contour level has been provided.

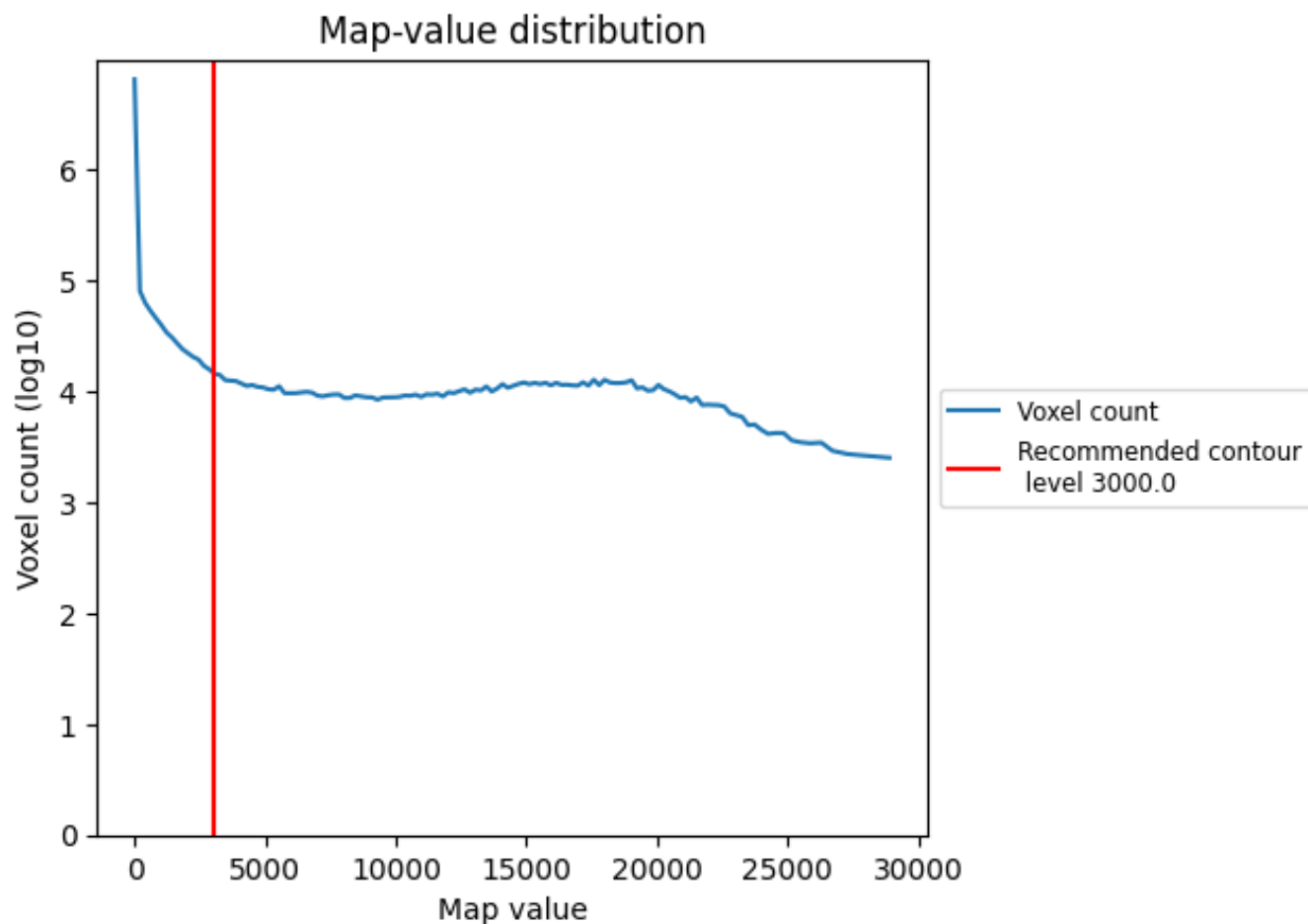
6.5 Mask visualisation

This section was not generated. No masks/segmentation were deposited.

7 Map analysis [i](#)

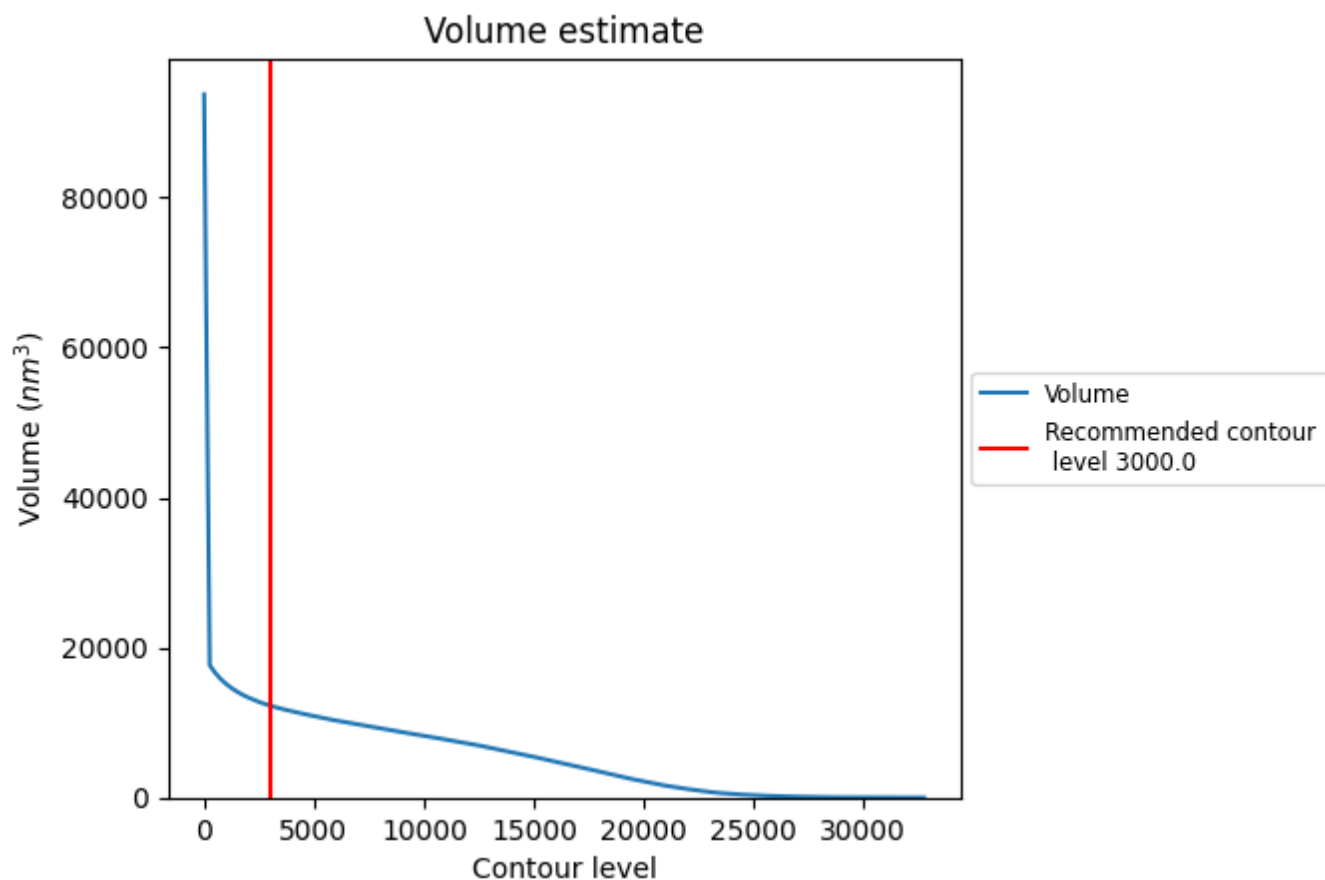
This section contains the results of statistical analysis of the map.

7.1 Map-value distribution [i](#)



The map-value distribution is plotted in 128 intervals along the x-axis. The y-axis is logarithmic. A spike in this graph at zero usually indicates that the volume has been masked.

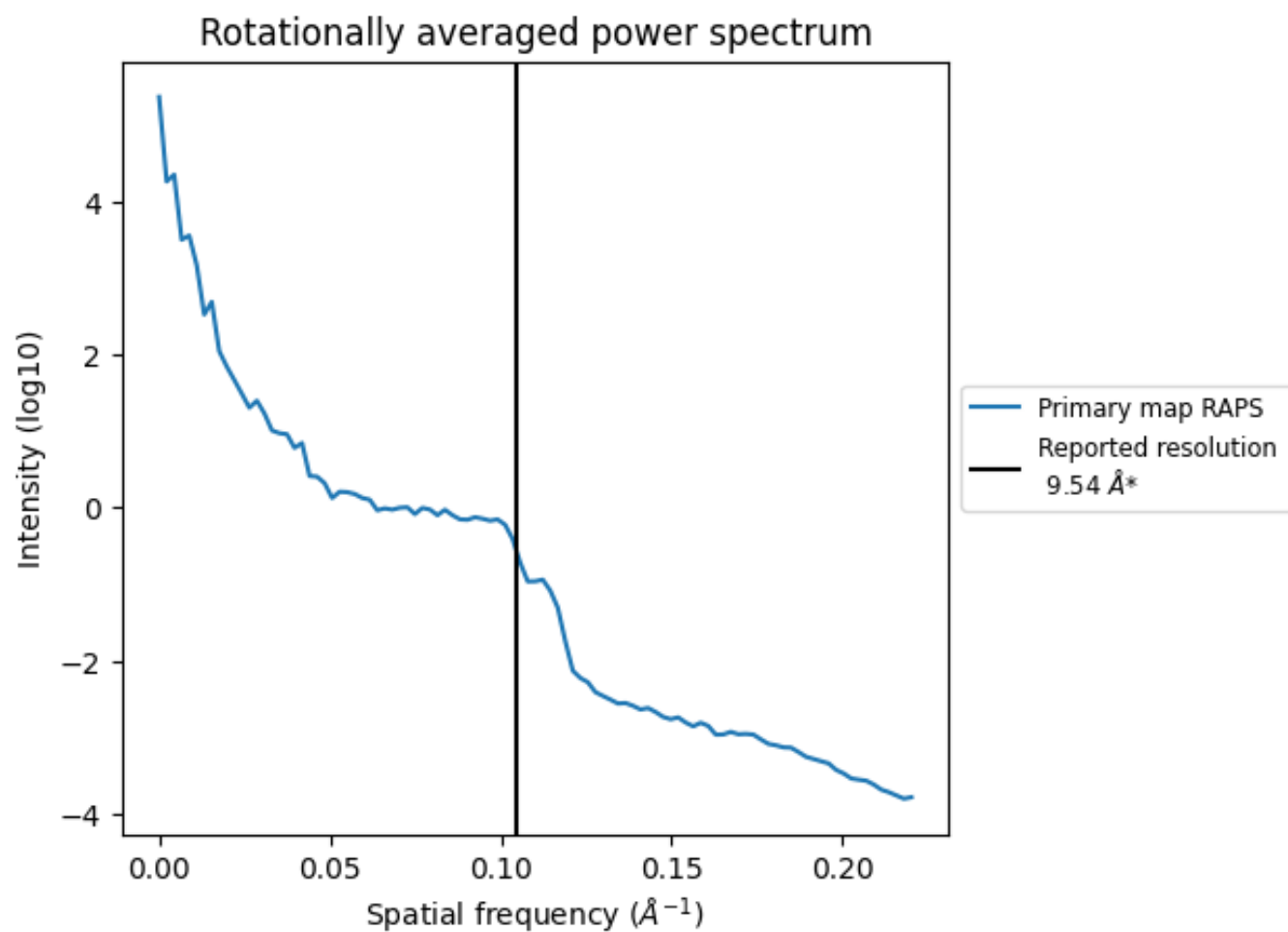
7.2 Volume estimate [i](#)



The volume at the recommended contour level is 12254 nm^3 ; this corresponds to an approximate mass of 11070 kDa.

The volume estimate graph shows how the enclosed volume varies with the contour level. The recommended contour level is shown as a vertical line and the intersection between the line and the curve gives the volume of the enclosed surface at the given level.

7.3 Rotationally averaged power spectrum ⓘ



*Reported resolution corresponds to spatial frequency of 0.105 Å⁻¹

8 Fourier-Shell correlation

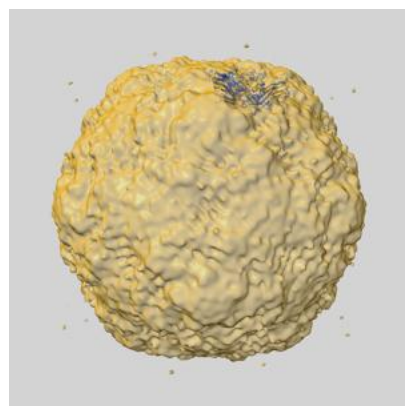
This section was not generated. No FSC curve or half-maps provided.

9 Map-model fit [i](#)

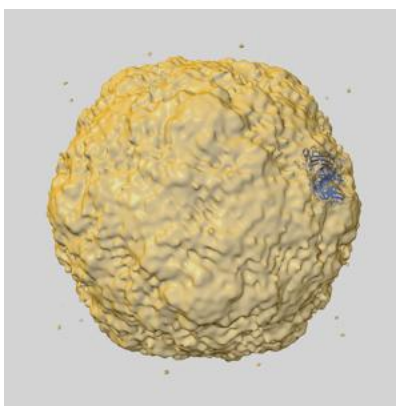
This section contains information regarding the fit between EMDB map EMD-5514 and PDB model 3J2J. Per-residue inclusion information can be found in section 3 on page 4.

9.1 Map-model overlays

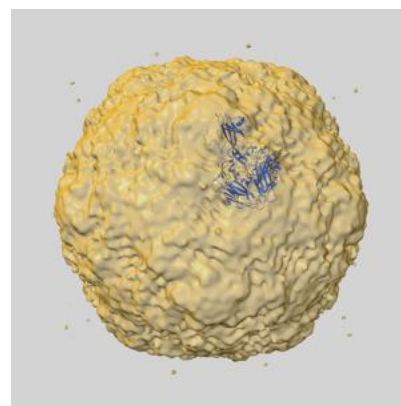
9.1.1 Map-model overlay [i](#)



X

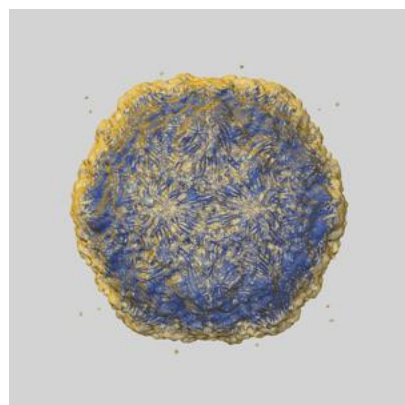


Y

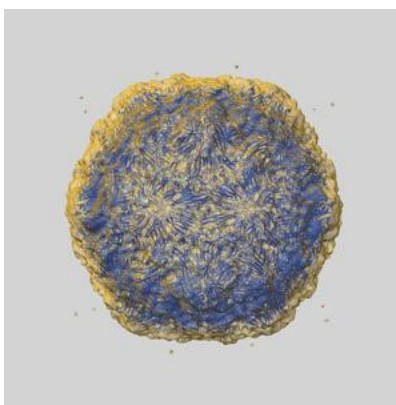


Z

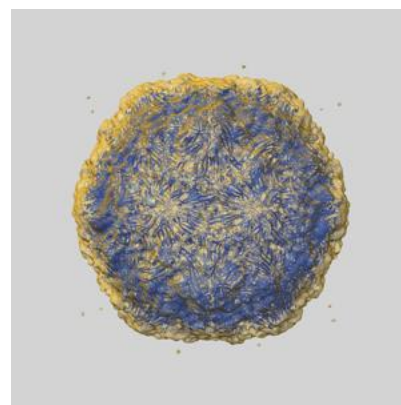
9.1.2 Map-model assembly overlay [i](#)



X



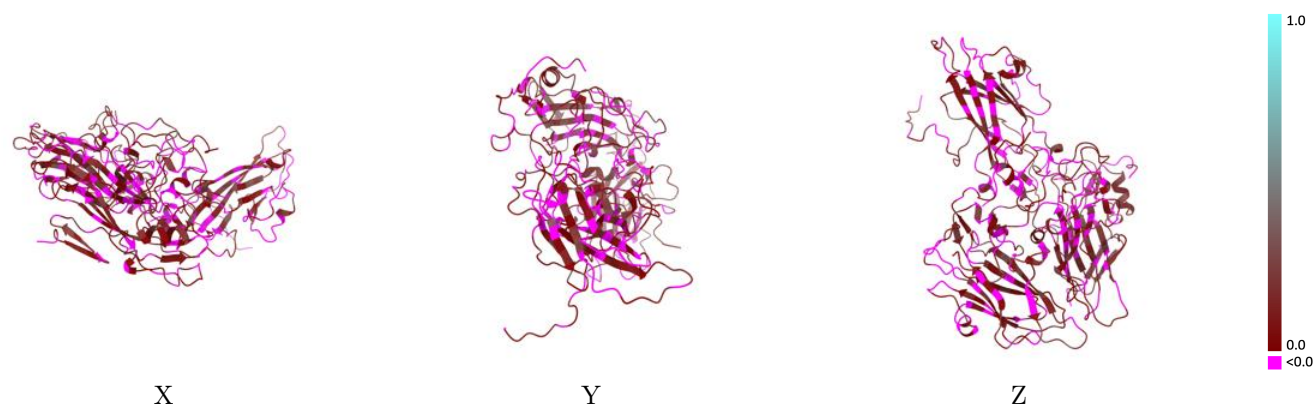
Y



Z

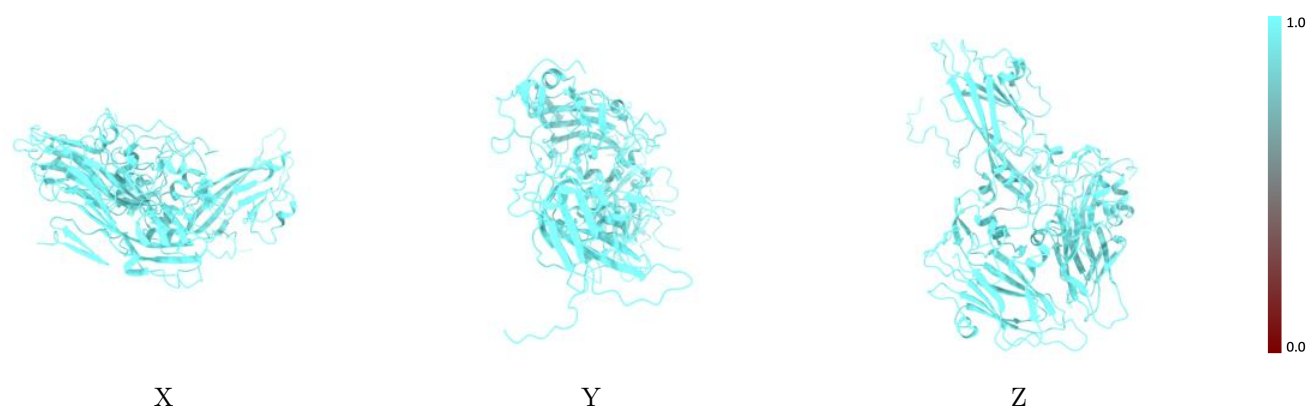
The images above show the 3D surface view of the map at the recommended contour level 3000.0 at 50% transparency in yellow overlaid with a ribbon representation of the model coloured in blue. These images allow for the visual assessment of the quality of fit between the atomic model and the map.

9.2 Q-score mapped to coordinate model [i](#)



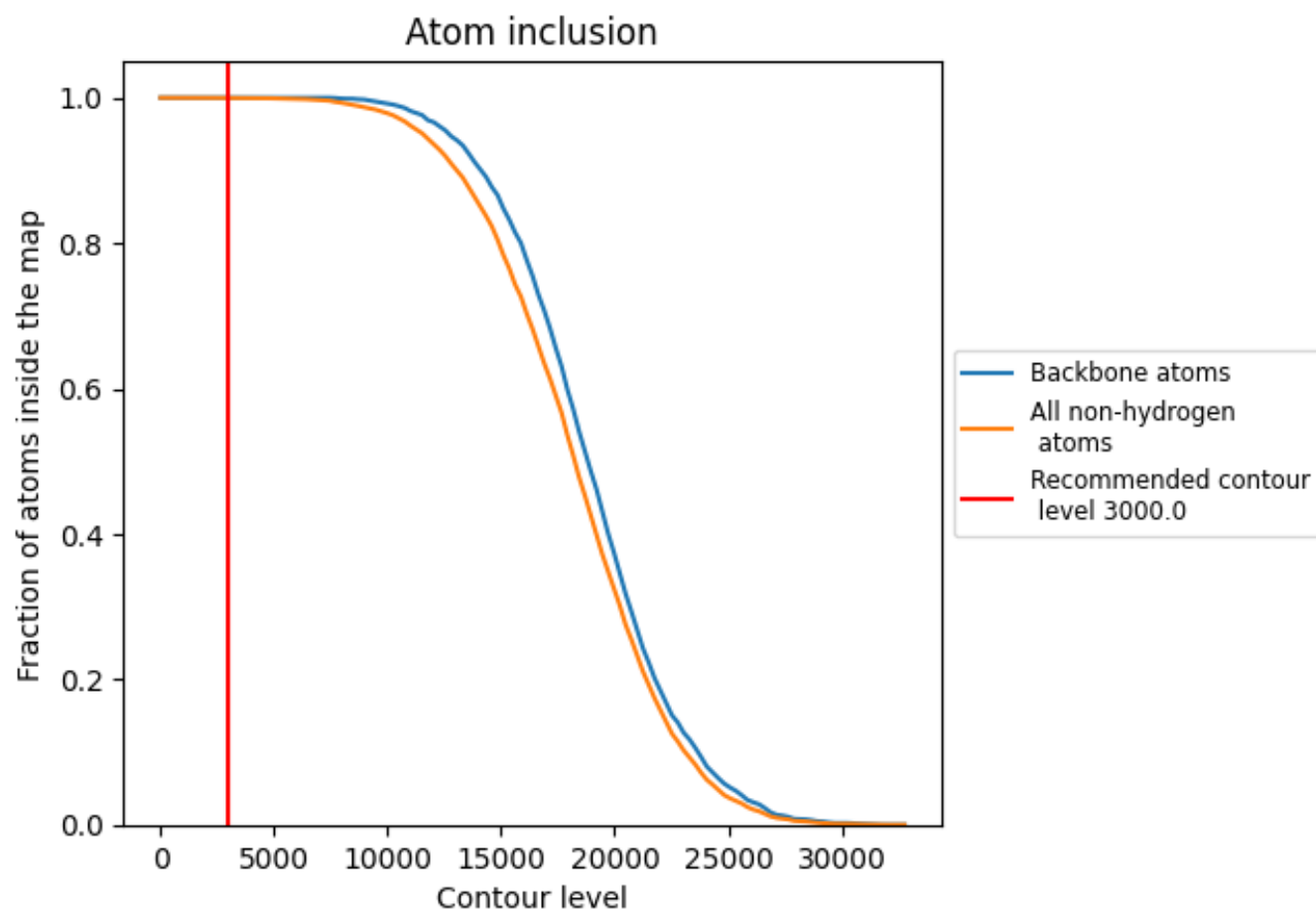
The images above show the model with each residue coloured according to its Q-score. This shows their resolvability in the map with higher Q-score values reflecting better resolvability. Please note: Q-score is calculating the resolvability of atoms, and thus high values are only expected at resolutions at which atoms can be resolved. Low Q-score values may therefore be expected for many entries.

9.3 Atom inclusion mapped to coordinate model [i](#)



The images above show the model with each residue coloured according to its atom inclusion. This shows to what extent they are inside the map at the recommended contour level (3000.0).

9.4 Atom inclusion [i](#)



At the recommended contour level, 100% of all backbone atoms, 100% of all non-hydrogen atoms, are inside the map.

9.5 Map-model fit summary ⓘ

The table lists the average atom inclusion at the recommended contour level (3000.0) and Q-score for the entire model and for each chain.

Chain	Atom inclusion	Q-score
All	<div></div> 0.9996	<div></div> 0.0600
A	<div></div> 1.0000	<div></div> 0.0490
B	<div></div> 0.9989	<div></div> 0.0640
C	<div></div> 1.0000	<div></div> 0.0670

