



Full wwPDB X-ray Structure Validation Report ⓘ

May 24, 2020 – 10:51 am BST

PDB ID : 4J28
Title : Crystal structure of a gh29 alpha-l-fucosidase gh29 from bacteroides thetaio-
taomicron in complex with a 5-membered iminocyclitol inhibitor
Authors : Wright, D.W.
Deposited on : 2013-02-04
Resolution : 1.73 Å(reported)

This is a Full wwPDB X-ray Structure Validation Report for a publicly released PDB entry.

We welcome your comments at validation@mail.wwpdb.org

A user guide is available at

<https://www.wwpdb.org/validation/2017/XrayValidationReportHelp>

with specific help available everywhere you see the ⓘ symbol.

The following versions of software and data (see [references ⓘ](#)) were used in the production of this report:

MolProbity : 4.02b-467
Mogul : 1.8.5 (274361), CSD as541be (2020)
Xtriage (Phenix) : 1.13
EDS : 2.11
Percentile statistics : 20191225.v01 (using entries in the PDB archive December 25th 2019)
Refmac : 5.8.0158
CCP4 : 7.0.044 (Gargrove)
Ideal geometry (proteins) : Engh & Huber (2001)
Ideal geometry (DNA, RNA) : Parkinson et al. (1996)
Validation Pipeline (wwPDB-VP) : 2.11

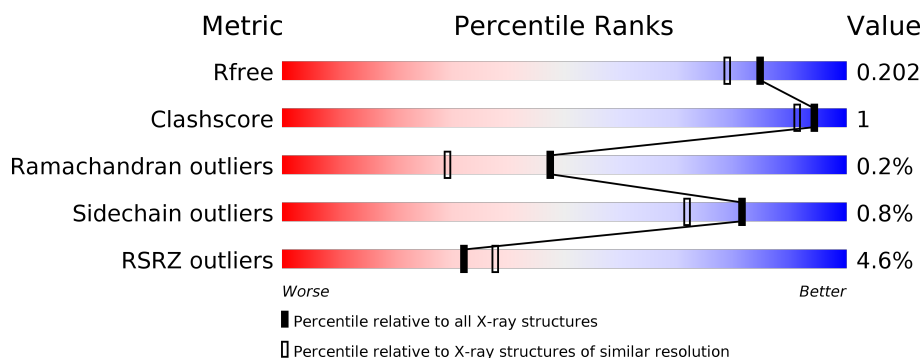
1 Overall quality at a glance

The following experimental techniques were used to determine the structure:

X-RAY DIFFRACTION

The reported resolution of this entry is 1.73 Å.

Percentile scores (ranging between 0-100) for global validation metrics of the entry are shown in the following graphic. The table shows the number of entries on which the scores are based.



Metric	Whole archive (#Entries)	Similar resolution (#Entries, resolution range(Å))
R_{free}	130704	3764 (1.76-1.72)
Clashscore	141614	3923 (1.76-1.72)
Ramachandran outliers	138981	3878 (1.76-1.72)
Sidechain outliers	138945	3878 (1.76-1.72)
RSRZ outliers	127900	3705 (1.76-1.72)

The table below summarises the geometric issues observed across the polymeric chains and their fit to the electron density. The red, orange, yellow and green segments on the lower bar indicate the fraction of residues that contain outliers for ≥ 3 , 2, 1 and 0 types of geometric quality criteria respectively. A grey segment represents the fraction of residues that are not modelled. The numeric value for each fraction is indicated below the corresponding segment, with a dot representing fractions $\leq 5\%$. The upper red bar (where present) indicates the fraction of residues that have poor fit to the electron density. The numeric value is given above the bar.

Mol	Chain	Length	Quality of chain
1	A	450	<div> <div>4%</div> <div> <div></div> <div>93%</div> <div></div> </div> <div></div> </div>
1	B	450	<div> <div>5%</div> <div> <div></div> <div>94%</div> <div></div> </div> <div></div> </div>

2 Entry composition [i](#)

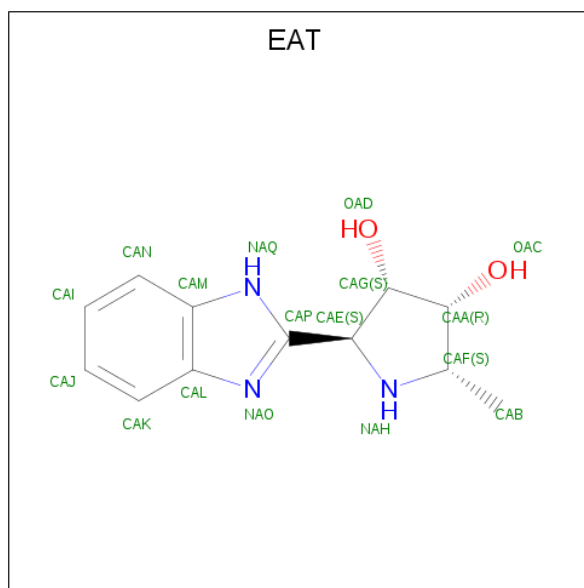
There are 6 unique types of molecules in this entry. The entry contains 7908 atoms, of which 0 are hydrogens and 0 are deuteriums.

In the tables below, the ZeroOcc column contains the number of atoms modelled with zero occupancy, the AltConf column contains the number of residues with at least one atom in alternate conformation and the Trace column contains the number of residues modelled with at most 2 atoms.

- Molecule 1 is a protein called Alpha-L-fucosidase.

Mol	Chain	Residues	Atoms					ZeroOcc	AltConf	Trace
1	A	438	Total	C	N	O	S	0	7	0
			3547	2285	586	658	18			
1	B	438	Total	C	N	O	S	0	5	0
			3536	2277	589	652	18			

- Molecule 2 is (2S,3S,4R,5S)-2-(1H-benzimidazol-2-yl)-5-methylpyrrolidine-3,4-diol (three-letter code: EAT) (formula: C₁₂H₁₅N₃O₂).



Mol	Chain	Residues	Atoms				ZeroOcc	AltConf
2	A	1	Total	C	N	O	0	0
			17	12	3	2		
2	B	1	Total	C	N	O	0	0
			17	12	3	2		

- Molecule 3 is IMIDAZOLE (three-letter code: IMD) (formula: C₃H₅N₂).



Mol	Chain	Residues	Atoms			ZeroOcc	AltConf
3	A	1	Total	C	N	0	0
			5	3	2		
3	A	1	Total	C	N	0	0
			5	3	2		
3	A	1	Total	C	N	0	0
			5	3	2		
3	A	1	Total	C	N	0	0
			5	3	2		
3	B	1	Total	C	N	0	0
			5	3	2		

- Molecule 4 is SULFATE ION (three-letter code: SO4) (formula: O₄S).



Mol	Chain	Residues	Atoms			ZeroOcc	AltConf
4	A	1	Total	O	S	0	0
			5	4	1		
4	A	1	Total	O	S	0	0
			5	4	1		
4	A	1	Total	O	S	0	0
			5	4	1		
4	B	1	Total	O	S	0	0
			5	4	1		

- Molecule 5 is GLYCEROL (three-letter code: GOL) (formula: $C_3H_8O_3$).



Mol	Chain	Residues	Atoms			ZeroOcc	AltConf
5	A	1	Total 6	C 3	O 3	0	0
5	B	1	Total 6	C 3	O 3	0	0

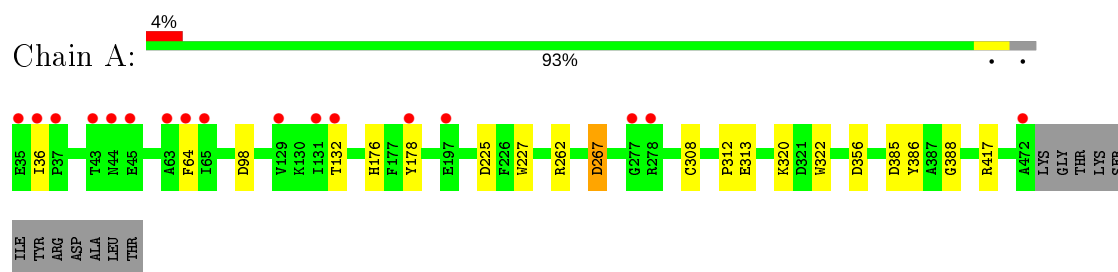
- Molecule 6 is water.

Mol	Chain	Residues	Atoms		ZeroOcc	AltConf
6	A	390	Total 390	O 390	0	0
6	B	339	Total 339	O 339	0	0

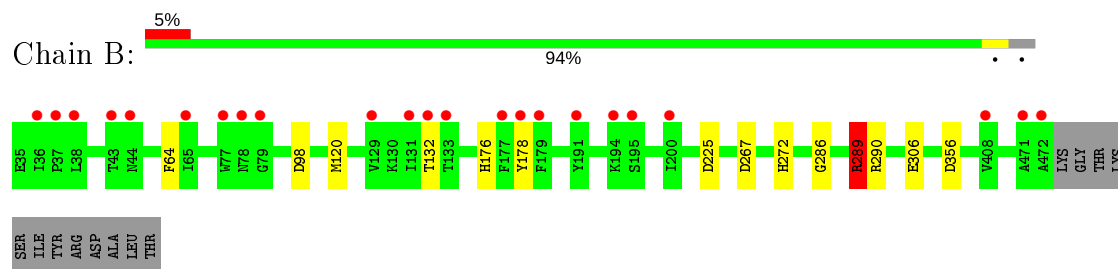
3 Residue-property plots [i](#)

These plots are drawn for all protein, RNA and DNA chains in the entry. The first graphic for a chain summarises the proportions of the various outlier classes displayed in the second graphic. The second graphic shows the sequence view annotated by issues in geometry and electron density. Residues are color-coded according to the number of geometric quality criteria for which they contain at least one outlier: green = 0, yellow = 1, orange = 2 and red = 3 or more. A red dot above a residue indicates a poor fit to the electron density ($RSRZ > 2$). Stretches of 2 or more consecutive residues without any outlier are shown as a green connector. Residues present in the sample, but not in the model, are shown in grey.

- Molecule 1: Alpha-L-fucosidase



- Molecule 1: Alpha-L-fucosidase



4 Data and refinement statistics

Property	Value	Source
Space group	P 1 21 1	Depositor
Cell constants a, b, c, α , β , γ	68.73Å 95.61Å 96.99Å 90.00° 91.21° 90.00°	Depositor
Resolution (Å)	29.01 – 1.73 29.01 – 1.73	Depositor EDS
% Data completeness (in resolution range)	98.1 (29.01-1.73) 98.2 (29.01-1.73)	Depositor EDS
R_{merge}	(Not available)	Depositor
R_{sym}	0.04	Depositor
$\langle I/\sigma(I) \rangle$ ¹	1.39 (at 1.73Å)	Xtriage
Refinement program	REFMAC	Depositor
R, R_{free}	0.171 , 0.194 0.180 , 0.202	Depositor DCC
R_{free} test set	6409 reflections (5.00%)	wwPDB-VP
Wilson B-factor (Å ²)	24.5	Xtriage
Anisotropy	0.896	Xtriage
Bulk solvent k_{sol} (e/Å ³), B_{sol} (Å ²)	0.36 , 46.2	EDS
L-test for twinning ²	$\langle L \rangle = 0.49$, $\langle L^2 \rangle = 0.32$	Xtriage
Estimated twinning fraction	0.006 for -h,l,k 0.015 for -h,-l,-k 0.026 for h,-k,-l	Xtriage
F_o, F_c correlation	0.97	EDS
Total number of atoms	7908	wwPDB-VP
Average B, all atoms (Å ²)	34.0	wwPDB-VP

Xtriage's analysis on translational NCS is as follows: *The largest off-origin peak in the Patterson function is 3.71% of the height of the origin peak. No significant pseudotranslation is detected.*

¹ Intensities estimated from amplitudes.

² Theoretical values of $\langle |L| \rangle$, $\langle L^2 \rangle$ for acentric reflections are 0.5, 0.333 respectively for untwinned datasets, and 0.375, 0.2 for perfectly twinned datasets.

5 Model quality ⓘ

5.1 Standard geometry ⓘ

Bond lengths and bond angles in the following residue types are not validated in this section: GOL, SO4, EAT, IMD

The Z score for a bond length (or angle) is the number of standard deviations the observed value is removed from the expected value. A bond length (or angle) with $|Z| > 5$ is considered an outlier worth inspection. RMSZ is the root-mean-square of all Z scores of the bond lengths (or angles).

Mol	Chain	Bond lengths		Bond angles	
		RMSZ	$\# Z > 5$	RMSZ	$\# Z > 5$
1	A	0.77	0/3675	0.79	5/4994 (0.1%)
1	B	0.76	1/3658 (0.0%)	0.79	2/4973 (0.0%)
All	All	0.77	1/7333 (0.0%)	0.79	7/9967 (0.1%)

All (1) bond length outliers are listed below:

Mol	Chain	Res	Type	Atoms	Z	Observed(Å)	Ideal(Å)
1	B	306	GLU	CD-OE1	-5.29	1.19	1.25

All (7) bond angle outliers are listed below:

Mol	Chain	Res	Type	Atoms	Z	Observed(°)	Ideal(°)
1	A	98	ASP	CB-CG-OD1	7.29	124.87	118.30
1	B	356	ASP	CB-CG-OD1	6.10	123.79	118.30
1	A	385	ASP	CB-CG-OD1	6.09	123.78	118.30
1	A	417	ARG	NE-CZ-NH2	-6.00	117.30	120.30
1	A	356	ASP	CB-CG-OD1	5.77	123.50	118.30
1	A	417	ARG	NE-CZ-NH1	5.69	123.14	120.30
1	B	289	ARG	NE-CZ-NH1	5.30	122.95	120.30

There are no chirality outliers.

There are no planarity outliers.

5.2 Too-close contacts ⓘ

In the following table, the Non-H and H(model) columns list the number of non-hydrogen atoms and hydrogen atoms in the chain respectively. The H(added) column lists the number of hydrogen atoms added and optimized by MolProbity. The Clashes column lists the number of clashes within the asymmetric unit, whereas Symm-Clashes lists symmetry related clashes.

Mol	Chain	Non-H	H(model)	H(added)	Clashes	Symm-Clashes
1	A	3547	0	3361	11	0
1	B	3536	0	3345	7	0
2	A	17	0	15	0	0
2	B	17	0	15	0	0
3	A	25	0	25	1	0
3	B	5	0	5	1	0
4	A	15	0	0	0	0
4	B	5	0	0	1	0
5	A	6	0	8	0	0
5	B	6	0	8	0	0
6	A	390	0	0	3	0
6	B	339	0	0	0	0
All	All	7908	0	6782	18	0

The all-atom clashscore is defined as the number of clashes found per 1000 atoms (including hydrogen atoms). The all-atom clashscore for this structure is 1.

All (18) close contacts within the same asymmetric unit are listed below, sorted by their clash magnitude.

Atom-1	Atom-2	Interatomic distance (Å)	Clash overlap (Å)
1:B:289:ARG:HH11	1:B:290:ARG:H	1.39	0.68
1:B:176:HIS:CG	1:B:225:ASP:HB3	2.43	0.53
1:A:320:LYS:CE	6:A:798:HOH:O	2.56	0.53
1:B:120:MET:SD	3:B:502:IMD:H5	2.51	0.51
1:B:289:ARG:NH1	1:B:290:ARG:H	2.09	0.49
1:A:176:HIS:CG	1:A:225:ASP:HB3	2.48	0.48
1:B:178:TYR:CD1	1:B:178:TYR:C	2.87	0.48
1:A:320:LYS:NZ	6:A:798:HOH:O	2.49	0.46
1:A:227:TRP:CZ2	1:A:262:ARG:NH1	2.86	0.44
1:A:178:TYR:C	1:A:178:TYR:CD1	2.91	0.44
1:A:132:THR:HA	1:A:178:TYR:HB3	2.00	0.43
1:B:272:HIS:NE2	4:B:503:SO4:O4	2.41	0.43
1:B:132:THR:HA	1:B:178:TYR:HB3	2.01	0.43
1:A:308[B]:CYS:SG	6:A:922:HOH:O	2.61	0.41
1:A:313:GLU:O	3:A:504:IMD:H2	2.21	0.41
1:A:386:TYR:CZ	1:A:388:GLY:HA2	2.56	0.41
1:A:312:PRO:HG3	1:A:322:TRP:CE2	2.56	0.41
1:A:267:ASP:N	1:A:267:ASP:OD1	2.53	0.40

There are no symmetry-related clashes.

5.3 Torsion angles

5.3.1 Protein backbone

In the following table, the Percentiles column shows the percent Ramachandran outliers of the chain as a percentile score with respect to all X-ray entries followed by that with respect to entries of similar resolution.

The Analysed column shows the number of residues for which the backbone conformation was analysed, and the total number of residues.

Mol	Chain	Analysed	Favoured	Allowed	Outliers	Percentiles	
1	A	443/450 (98%)	431 (97%)	11 (2%)	1 (0%)	47	29
1	B	441/450 (98%)	430 (98%)	10 (2%)	1 (0%)	47	29
All	All	884/900 (98%)	861 (97%)	21 (2%)	2 (0%)	47	29

All (2) Ramachandran outliers are listed below:

Mol	Chain	Res	Type
1	A	36	ILE
1	B	286	GLY

5.3.2 Protein sidechains

In the following table, the Percentiles column shows the percent sidechain outliers of the chain as a percentile score with respect to all X-ray entries followed by that with respect to entries of similar resolution.

The Analysed column shows the number of residues for which the sidechain conformation was analysed, and the total number of residues.

Mol	Chain	Analysed	Rotameric	Outliers	Percentiles	
1	A	362/383 (94%)	360 (99%)	2 (1%)	86	79
1	B	358/383 (94%)	354 (99%)	4 (1%)	73	59
All	All	720/766 (94%)	714 (99%)	6 (1%)	81	72

All (6) residues with a non-rotameric sidechain are listed below:

Mol	Chain	Res	Type
1	A	64	PHE
1	A	267	ASP
1	B	64	PHE
1	B	98	ASP

Continued on next page...

Continued from previous page...

Mol	Chain	Res	Type
1	B	267	ASP
1	B	289	ARG

Some sidechains can be flipped to improve hydrogen bonding and reduce clashes. There are no such sidechains identified.

5.3.3 RNA ⓘ

There are no RNA molecules in this entry.

5.4 Non-standard residues in protein, DNA, RNA chains ⓘ

There are no non-standard protein/DNA/RNA residues in this entry.

5.5 Carbohydrates ⓘ

There are no carbohydrates in this entry.

5.6 Ligand geometry ⓘ

14 ligands are modelled in this entry.

In the following table, the Counts columns list the number of bonds (or angles) for which Mogul statistics could be retrieved, the number of bonds (or angles) that are observed in the model and the number of bonds (or angles) that are defined in the Chemical Component Dictionary. The Link column lists molecule types, if any, to which the group is linked. The Z score for a bond length (or angle) is the number of standard deviations the observed value is removed from the expected value. A bond length (or angle) with $|Z| > 2$ is considered an outlier worth inspection. RMSZ is the root-mean-square of all Z scores of the bond lengths (or angles).

Mol	Type	Chain	Res	Link	Bond lengths			Bond angles		
					Counts	RMSZ	# $ Z > 2$	Counts	RMSZ	# $ Z > 2$
3	IMD	A	506	-	3,5,5	0.29	0	4,5,5	0.46	0
5	GOL	B	504	-	5,5,5	0.44	0	5,5,5	0.60	0
2	EAT	B	501	-	17,19,19	2.63	4 (23%)	14,28,28	1.10	0
4	SO4	A	507	-	4,4,4	0.40	0	6,6,6	0.94	0
4	SO4	B	503	-	4,4,4	0.31	0	6,6,6	0.60	0
3	IMD	A	505	-	3,5,5	0.33	0	4,5,5	0.63	0
2	EAT	A	501	-	17,19,19	3.09	6 (35%)	14,28,28	1.80	1 (7%)
3	IMD	B	502	-	3,5,5	0.69	0	4,5,5	0.44	0

Mol	Type	Chain	Res	Link	Bond lengths			Bond angles		
					Counts	RMSZ	# Z > 2	Counts	RMSZ	# Z > 2
4	SO4	A	508	-	4,4,4	0.24	0	6,6,6	0.26	0
4	SO4	A	509	-	4,4,4	0.63	0	6,6,6	0.75	0
3	IMD	A	503	-	3,5,5	0.57	0	4,5,5	0.60	0
3	IMD	A	504	-	3,5,5	0.83	0	4,5,5	0.32	0
5	GOL	A	510	-	5,5,5	0.45	0	5,5,5	1.22	0
3	IMD	A	502	-	3,5,5	0.22	0	4,5,5	0.77	0

In the following table, the Chirals column lists the number of chiral outliers, the number of chiral centers analysed, the number of these observed in the model and the number defined in the Chemical Component Dictionary. Similar counts are reported in the Torsion and Rings columns. '-' means no outliers of that kind were identified.

Mol	Type	Chain	Res	Link	Chirals	Torsions	Rings
3	IMD	A	506	-	-	-	0/1/1/1
5	GOL	B	504	-	-	0/4/4/4	-
2	EAT	B	501	-	-	0/0/20/20	0/3/3/3
3	IMD	A	505	-	-	-	0/1/1/1
2	EAT	A	501	-	-	0/0/20/20	0/3/3/3
3	IMD	B	502	-	-	-	0/1/1/1
5	GOL	A	510	-	-	1/4/4/4	-
3	IMD	A	504	-	-	-	0/1/1/1
3	IMD	A	503	-	-	-	0/1/1/1
3	IMD	A	502	-	-	-	0/1/1/1

All (10) bond length outliers are listed below:

Mol	Chain	Res	Type	Atoms	Z	Observed(Å)	Ideal(Å)
2	A	501	EAT	CAE-NAH	9.78	1.57	1.47
2	B	501	EAT	CAE-NAH	7.13	1.54	1.47
2	B	501	EAT	CAN-CAM	-4.70	1.33	1.41
2	B	501	EAT	CAK-CAL	-4.52	1.34	1.41
2	A	501	EAT	CAK-CAL	-3.94	1.35	1.41
2	A	501	EAT	CAG-CAE	-3.82	1.49	1.54
2	A	501	EAT	CAN-CAM	-3.25	1.36	1.41
2	B	501	EAT	CAL-CAM	-2.82	1.33	1.42
2	A	501	EAT	CAP-CAE	2.73	1.56	1.50
2	A	501	EAT	CAL-CAM	-2.42	1.34	1.42

All (1) bond angle outliers are listed below:

Mol	Chain	Res	Type	Atoms	Z	Observed(°)	Ideal(°)
2	A	501	EAT	CAB-CAF-NAH	5.34	117.94	111.70

There are no chirality outliers.

All (1) torsion outliers are listed below:

Mol	Chain	Res	Type	Atoms
5	A	510	GOL	O1-C1-C2-O2

There are no ring outliers.

3 monomers are involved in 3 short contacts:

Mol	Chain	Res	Type	Clashes	Symm-Clashes
4	B	503	SO4	1	0
3	B	502	IMD	1	0
3	A	504	IMD	1	0

5.7 Other polymers [i](#)

There are no such residues in this entry.

5.8 Polymer linkage issues [i](#)

There are no chain breaks in this entry.

6 Fit of model and data

6.1 Protein, DNA and RNA chains

In the following table, the column labelled ‘#RSRZ > 2’ contains the number (and percentage) of RSRZ outliers, followed by percent RSRZ outliers for the chain as percentile scores relative to all X-ray entries and entries of similar resolution. The OWAB column contains the minimum, median, 95th percentile and maximum values of the occupancy-weighted average B-factor per residue. The column labelled ‘Q < 0.9’ lists the number of (and percentage) of residues with an average occupancy less than 0.9.

Mol	Chain	Analysed	<RSRZ>	#RSRZ>2	OWAB(Å ²)	Q<0.9
1	A	438/450 (97%)	-0.06	17 (3%) 39 45	23, 30, 51, 78	0
1	B	438/450 (97%)	0.06	23 (5%) 26 31	23, 32, 52, 69	0
All	All	876/900 (97%)	0.00	40 (4%) 32 38	23, 31, 52, 78	0

All (40) RSRZ outliers are listed below:

Mol	Chain	Res	Type	RSRZ
1	B	472	ALA	5.1
1	A	37	PRO	4.7
1	B	36	ILE	4.6
1	A	36	ILE	4.5
1	A	65	ILE	3.7
1	B	195	SER	3.4
1	A	131	ILE	3.2
1	B	65	ILE	3.1
1	B	178	TYR	3.0
1	A	43	THR	3.0
1	B	194	LYS	2.9
1	B	131	ILE	2.9
1	B	37	PRO	2.9
1	A	35	GLU	2.8
1	B	132	THR	2.8
1	B	78	ASN	2.7
1	A	45	GLU	2.7
1	B	179	PHE	2.6
1	A	64	PHE	2.6
1	B	43	THR	2.6
1	B	38	LEU	2.6
1	A	178	TYR	2.6
1	B	471	ALA	2.6
1	A	132	THR	2.5

Continued on next page...

Continued from previous page...

Mol	Chain	Res	Type	RSRZ
1	B	77	TRP	2.5
1	B	177	PHE	2.5
1	B	200	ILE	2.5
1	B	79	GLY	2.4
1	B	191	TYR	2.4
1	A	472	ALA	2.4
1	A	129	VAL	2.3
1	B	44	ASN	2.3
1	A	277	GLY	2.3
1	A	44	ASN	2.2
1	B	129	VAL	2.2
1	A	197	GLU	2.1
1	A	63	ALA	2.1
1	A	278	ARG	2.1
1	B	408	VAL	2.0
1	B	133	THR	2.0

6.2 Non-standard residues in protein, DNA, RNA chains [i](#)

There are no non-standard protein/DNA/RNA residues in this entry.

6.3 Carbohydrates [i](#)

There are no carbohydrates in this entry.

6.4 Ligands [i](#)

In the following table, the Atoms column lists the number of modelled atoms in the group and the number defined in the chemical component dictionary. The B-factors column lists the minimum, median, 95th percentile and maximum values of B factors of atoms in the group. The column labelled 'Q< 0.9' lists the number of atoms with occupancy less than 0.9.

Mol	Type	Chain	Res	Atoms	RSCC	RSR	B-factors(Å ²)	Q<0.9
4	SO4	A	509	5/5	0.72	0.29	60,66,99,106	0
3	IMD	A	505	5/5	0.79	0.30	72,74,75,78	0
5	GOL	B	504	6/6	0.79	0.27	66,67,72,76	0
3	IMD	A	506	5/5	0.81	0.16	58,60,66,68	0
3	IMD	A	503	5/5	0.84	0.18	36,38,39,45	5
3	IMD	A	504	5/5	0.85	0.17	42,51,59,59	0
2	EAT	A	501	17/17	0.89	0.11	28,34,50,51	0

Continued on next page...

Continued from previous page...

Mol	Type	Chain	Res	Atoms	RSCC	RSR	B-factors(\AA^2)	Q<0.9
5	GOL	A	510	6/6	0.89	0.13	36,53,54,54	0
2	EAT	B	501	17/17	0.90	0.12	29,38,65,67	0
4	SO4	A	508	5/5	0.95	0.10	39,39,46,48	5
4	SO4	B	503	5/5	0.95	0.14	59,67,71,75	0
4	SO4	A	507	5/5	0.98	0.11	62,67,70,70	0
3	IMD	A	502	5/5	0.98	0.12	28,28,31,33	0
3	IMD	B	502	5/5	0.99	0.05	29,29,32,33	0

6.5 Other polymers [i](#)

There are no such residues in this entry.