



Full wwPDB EM Validation Report ⓘ

Nov 21, 2022 – 11:16 PM EST

PDB ID : 3J4P
EMDB ID : EMD-5681
Title : Electron Microscopy Analysis of a Disaccharide Analog complex Reveals Receptor Interactions of Adeno-Associated Virus
Authors : Xie, Q.; Chapman, M.S.
Deposited on : 2013-09-10
Resolution : 4.80 Å(reported)
Based on initial model : 3J1Q

This is a Full wwPDB EM Validation Report for a publicly released PDB entry.

We welcome your comments at validation@mail.wwpdb.org

A user guide is available at

<https://www.wwpdb.org/validation/2017/EMValidationReportHelp>
with specific help available everywhere you see the ⓘ symbol.

The types of validation reports are described at

<http://www.wwpdb.org/validation/2017/FAQs#types>.

The following versions of software and data (see [references ⓘ](#)) were used in the production of this report:

EMDB validation analysis : 0.0.1.dev43
Mogul : 1.8.5 (274361), CSD as541be (2020)
MolProbity : 4.02b-467
Percentile statistics : 20191225.v01 (using entries in the PDB archive December 25th 2019)
MapQ : 1.9.9
Ideal geometry (proteins) : Engh & Huber (2001)
Ideal geometry (DNA, RNA) : Parkinson et al. (1996)
Validation Pipeline (wwPDB-VP) : 2.31.3

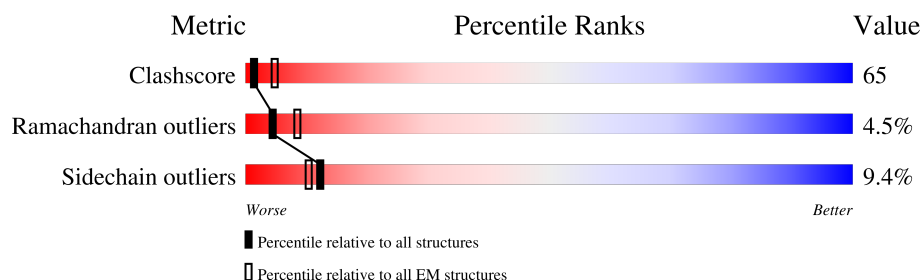
1 Overall quality at a glance

The following experimental techniques were used to determine the structure:

ELECTRON MICROSCOPY

The reported resolution of this entry is 4.80 Å.

Percentile scores (ranging between 0-100) for global validation metrics of the entry are shown in the following graphic. The table shows the number of entries on which the scores are based.



Metric	Whole archive (#Entries)	EM structures (#Entries)
Clashscore	158937	4297
Ramachandran outliers	154571	4023
Sidechain outliers	154315	3826

The table below summarises the geometric issues observed across the polymeric chains and their fit to the map. The red, orange, yellow and green segments of the bar indicate the fraction of residues that contain outliers for ≥ 3 , 2, 1 and 0 types of geometric quality criteria respectively. A grey segment represents the fraction of residues that are not modelled. The numeric value for each fraction is indicated below the corresponding segment, with a dot representing fractions $\leq 5\%$. The upper red bar (where present) indicates the fraction of residues that have poor fit to the EM map (all-atom inclusion $< 40\%$). The numeric value is given above the bar.

Mol	Chain	Length	Quality of chain
1	A	517	 32% 58% 9% 100%
2	B	2	 100%

2 Entry composition [i](#)

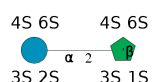
There are 5 unique types of molecules in this entry. The entry contains 4243 atoms, of which 0 are hydrogens and 0 are deuteriums.

In the tables below, the AltConf column contains the number of residues with at least one atom in alternate conformation and the Trace column contains the number of residues modelled with at most 2 atoms.

- Molecule 1 is a protein called Capsid protein VP1.

Mol	Chain	Residues	Atoms					AltConf	Trace
1	A	517	Total	C	N	O	S	6	0
			4185	2635	728	808	14		

- Molecule 2 is an oligosaccharide called 1,3,4,6-tetra-O-sulfo-beta-D-fructofuranose-(2-1)-2,3,4,6-tetra-O-sulfonato-alpha-D-glucopyranose.



Mol	Chain	Residues	Atoms				AltConf	Trace
2	B	2	Total	C	O	S	0	0
			55	12	35	8		

- Molecule 3 is SODIUM ION (three-letter code: NA) (formula: Na).

Mol	Chain	Residues	Atoms		AltConf
3	A	1	Total	Na	0
			1	1	

- Molecule 4 is MAGNESIUM ION (three-letter code: MG) (formula: Mg).

Mol	Chain	Residues	Atoms		AltConf
4	A	1	Total	Mg	0
			1	1	

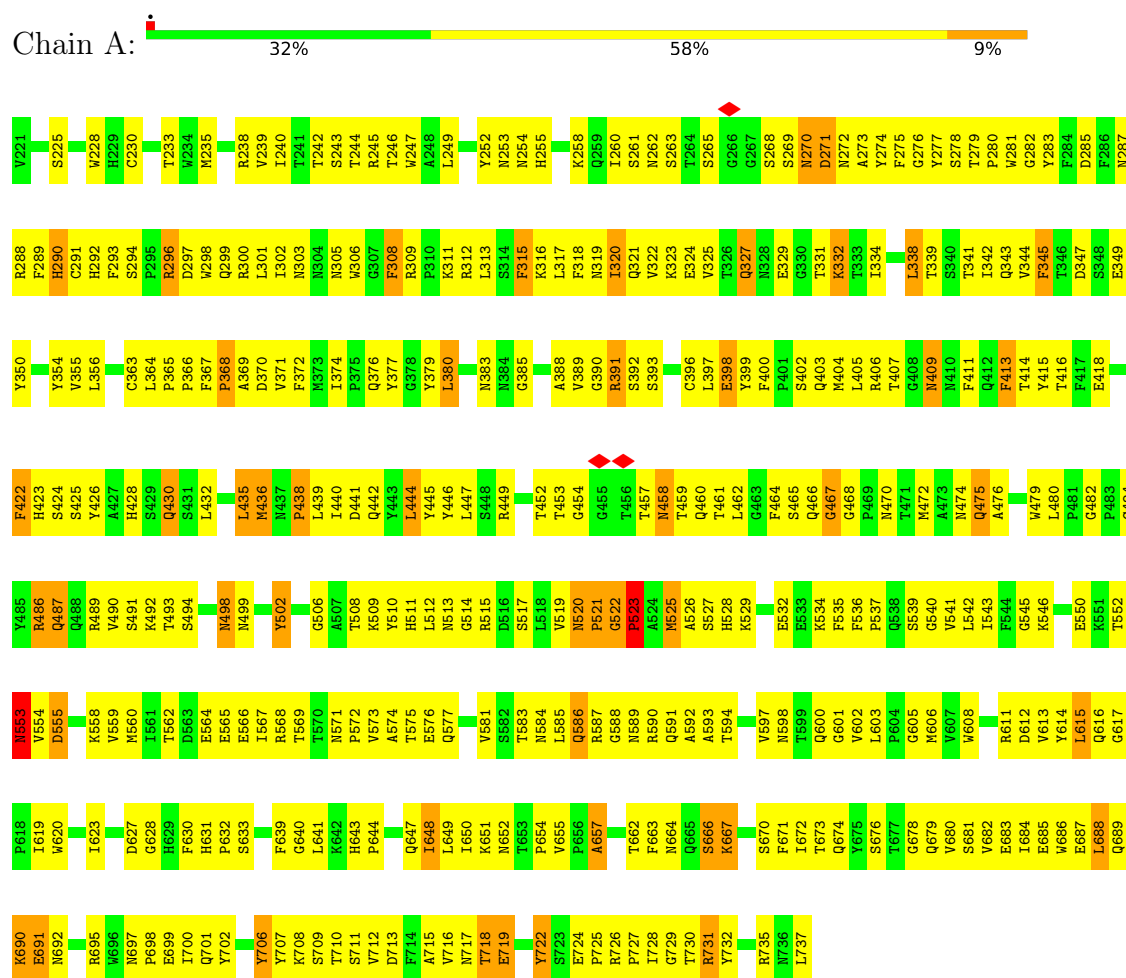
- Molecule 5 is water.

Mol	Chain	Residues	Atoms		AltConf
5	A	1	Total	O	0
			1	1	

3 Residue-property plots

These plots are drawn for all protein, RNA, DNA and oligosaccharide chains in the entry. The first graphic for a chain summarises the proportions of the various outlier classes displayed in the second graphic. The second graphic shows the sequence view annotated by issues in geometry and atom inclusion in map density. Residues are color-coded according to the number of geometric quality criteria for which they contain at least one outlier: green = 0, yellow = 1, orange = 2 and red = 3 or more. A red diamond above a residue indicates a poor fit to the EM map for this residue (all-atom inclusion < 40%). Stretches of 2 or more consecutive residues without any outlier are shown as a green connector. Residues present in the sample, but not in the model, are shown in grey.

• Molecule 1: Capsid protein VP1



• Molecule 2: 1,3,4,6-tetra-O-sulfo-beta-D-fructofuranose-(2-1)-2,3,4,6-tetra-O-sulfonato-alpha-D-glucopyranose





4 Experimental information

Property	Value	Source
EM reconstruction method	SINGLE PARTICLE	Depositor
Imposed symmetry	POINT, I	Depositor
Number of particles used	45000	Depositor
Resolution determination method	FSC 0.143 CUT-OFF	Depositor
CTF correction method	each particle	Depositor
Microscope	FEI TITAN KRIOS	Depositor
Voltage (kV)	120	Depositor
Electron dose ($e^-/\text{\AA}^2$)	15	Depositor
Minimum defocus (nm)	800	Depositor
Maximum defocus (nm)	2000	Depositor
Magnification	120000	Depositor
Image detector	GATAN ULTRASCAN 4000 (4k x 4k)	Depositor
Maximum map value	12.864	Depositor
Minimum map value	-5.815	Depositor
Average map value	0.266	Depositor
Map value standard deviation	1.480	Depositor
Recommended contour level	3.0	Depositor
Map size (\AA)	355.4224, 355.4224, 355.4224	wwPDB
Map dimensions	272, 272, 272	wwPDB
Map angles ($^\circ$)	90.0, 90.0, 90.0	wwPDB
Pixel spacing (\AA)	1.3067, 1.3067, 1.3067	Depositor

5 Model quality [i](#)

5.1 Standard geometry [i](#)

Bond lengths and bond angles in the following residue types are not validated in this section: YYJ, GU4, NA, MG

The Z score for a bond length (or angle) is the number of standard deviations the observed value is removed from the expected value. A bond length (or angle) with $|Z| > 5$ is considered an outlier worth inspection. RMSZ is the root-mean-square of all Z scores of the bond lengths (or angles).

Mol	Chain	Bond lengths		Bond angles	
		RMSZ	$\# Z > 5$	RMSZ	$\# Z > 5$
1	A	0.36	0/4308	0.63	2/5870 (0.0%)

There are no bond length outliers.

All (2) bond angle outliers are listed below:

Mol	Chain	Res	Type	Atoms	Z	Observed(°)	Ideal(°)
1	A	520	ASN	C-N-CD	-6.75	105.75	120.60
1	A	522	GLY	C-N-CD	-5.99	107.43	120.60

There are no chirality outliers.

There are no planarity outliers.

5.2 Too-close contacts [i](#)

In the following table, the Non-H and H(model) columns list the number of non-hydrogen atoms and hydrogen atoms in the chain respectively. The H(added) column lists the number of hydrogen atoms added and optimized by MolProbity. The Clashes column lists the number of clashes within the asymmetric unit, whereas Symm-Clashes lists symmetry-related clashes.

Mol	Chain	Non-H	H(model)	H(added)	Clashes	Symm-Clashes
1	A	4185	0	3946	534	0
2	B	55	0	6	4	0
3	A	1	0	0	0	0
4	A	1	0	0	0	0
5	A	1	0	0	0	0
All	All	4243	0	3952	536	0

The all-atom clashscore is defined as the number of clashes found per 1000 atoms (including hydrogen atoms). The all-atom clashscore for this structure is 65.

All (536) close contacts within the same asymmetric unit are listed below, sorted by their clash magnitude.

Atom-1	Atom-2	Interatomic distance (Å)	Clash overlap (Å)
1:A:320:ILE:HD12	1:A:320:ILE:H	1.23	1.04
1:A:262:ASN:HD21	1:A:273:ALA:HA	1.27	0.99
1:A:355:VAL:H	1:A:647:GLN:NE2	1.63	0.97
1:A:520:ASN:HA	1:A:522:GLY:H	1.26	0.96
1:A:355:VAL:N	1:A:647:GLN:HE22	1.65	0.95
1:A:262:ASN:ND2	1:A:273:ALA:HA	1.81	0.95
1:A:695:ARG:HH21	1:A:697:ASN:HD22	1.13	0.94
1:A:438:PRO:HG2	1:A:439:LEU:HD22	1.52	0.92
1:A:717:ASN:HD21	1:A:719:GLU:HB2	1.34	0.92
1:A:321:GLN:HB3	1:A:323:LYS:HE2	1.52	0.91
1:A:338:LEU:HD23	1:A:338:LEU:H	1.31	0.91
1:A:367:PHE:HE2	1:A:369:ALA:HB3	1.36	0.91
1:A:298:TRP:O	1:A:302:ILE:HG12	1.71	0.90
1:A:525:MET:HE1	1:A:572:PRO:HD2	1.52	0.90
1:A:487:GLN:HA	1:A:508:THR:HG21	1.54	0.89
1:A:239:VAL:HG13	1:A:686:TRP:HB2	1.53	0.89
1:A:585[B]:LEU:H	1:A:585[B]:LEU:HD23	1.36	0.87
1:A:440:ILE:HG22	1:A:441:ASP:H	1.40	0.87
1:A:396:CYS:HB3	1:A:398:GLU:OE1	1.77	0.85
1:A:490:VAL:HG22	1:A:491:SER:H	1.42	0.85
1:A:550:GLU:HG2	1:A:554:VAL:HG22	1.58	0.84
1:A:225:SER:H	1:A:319:ASN:HD21	1.24	0.84
1:A:247:TRP:NE1	1:A:317:LEU:HD11	1.92	0.84
1:A:247:TRP:HE1	1:A:317:LEU:HD11	1.39	0.83
1:A:695:ARG:NH2	1:A:697:ASN:HD22	1.76	0.83
1:A:641:LEU:HB2	1:A:644:PRO:HG3	1.58	0.83
1:A:230:CYS:SG	1:A:243:SER:HA	2.20	0.82
1:A:355:VAL:HG13	1:A:356:LEU:HD12	1.61	0.82
1:A:252:TYR:HB3	1:A:376:GLN:HE21	1.42	0.82
1:A:289:PHE:CE1	1:A:619:ILE:HA	2.15	0.81
1:A:695:ARG:HE	1:A:697:ASN:HB3	1.44	0.80
1:A:490:VAL:HG22	1:A:491:SER:N	1.97	0.80
1:A:498:ASN:ND2	1:A:499:ASN:H	1.80	0.80
1:A:510:TYR:HD2	1:A:519:VAL:HG12	1.47	0.79
1:A:288:ARG:HB2	1:A:291:CYS:SG	2.23	0.79
1:A:252:TYR:CE2	1:A:376:GLN:HB2	2.17	0.79
1:A:367:PHE:CD1	1:A:368:PRO:HD2	2.17	0.79
1:A:344:VAL:HG23	1:A:649:LEU:O	1.84	0.78
1:A:342:ILE:HD11	1:A:405:LEU:HB3	1.65	0.78
1:A:520:ASN:CA	1:A:522:GLY:H	1.95	0.78

Continued on next page...

Continued from previous page...

Atom-1	Atom-2	Interatomic distance (Å)	Clash overlap (Å)
1:A:274:TYR:HB2	1:A:380:LEU:HD23	1.67	0.77
1:A:294:SER:HB3	1:A:297:ASP:OD1	1.85	0.76
1:A:545:GLY:HA2	1:A:559:VAL:HA	1.66	0.76
1:A:472:MET:HA	1:A:475:GLN:HG3	1.67	0.76
1:A:444:LEU:N	1:A:444:LEU:HD12	2.01	0.76
1:A:695:ARG:HH21	1:A:697:ASN:ND2	1.82	0.75
1:A:440:ILE:HG22	1:A:441:ASP:N	2.00	0.75
1:A:664:ASN:HD21	1:A:666:SER:HB3	1.50	0.75
1:A:602:VAL:C	1:A:603:LEU:HD12	2.07	0.75
1:A:523:PRO:HD2	1:A:611:ARG:NH2	2.02	0.74
1:A:651:LYS:HZ1	1:A:654:PRO:HG3	1.52	0.74
1:A:486:ARG:HE	1:A:577:GLN:HA	1.52	0.74
1:A:541:VAL:HB	1:A:562:THR:OG1	1.86	0.74
1:A:425:SER:HB3	1:A:730:THR:HB	1.70	0.74
1:A:338:LEU:H	1:A:338:LEU:CD2	2.02	0.73
1:A:260:ILE:N	1:A:260:ILE:HD12	2.03	0.73
1:A:320:ILE:H	1:A:320:ILE:CD1	1.99	0.73
1:A:344:VAL:HB	1:A:650:ILE:HD13	1.70	0.73
1:A:422:PHE:HD1	1:A:422:PHE:H	1.37	0.73
1:A:640:GLY:C	1:A:641:LEU:HD12	2.09	0.73
1:A:655:VAL:HG12	1:A:672:ILE:HD13	1.70	0.72
1:A:523:PRO:HD2	1:A:611:ARG:HH22	1.53	0.72
1:A:320:ILE:HD12	1:A:320:ILE:N	2.00	0.72
1:A:367:PHE:CE2	1:A:369:ALA:HB3	2.23	0.72
1:A:285:ASP:O	1:A:363:CYS:HA	1.90	0.72
1:A:379:TYR:C	1:A:380:LEU:HD12	2.10	0.72
1:A:472:MET:HA	1:A:475:GLN:CG	2.20	0.71
1:A:651:LYS:NZ	1:A:654:PRO:HG3	2.05	0.71
1:A:283:TYR:O	1:A:374:ILE:HG23	1.90	0.71
1:A:587[B]:ARG:HG3	1:A:588[B]:GLY:N	2.05	0.71
1:A:525:MET:HG3	1:A:526:ALA:H	1.56	0.70
1:A:302:ILE:HD12	1:A:730:THR:HG22	1.73	0.70
1:A:520:ASN:HA	1:A:522:GLY:N	2.04	0.70
1:A:339:THR:HA	1:A:406:ARG:HH12	1.55	0.70
1:A:510:TYR:CD2	1:A:519:VAL:HG12	2.26	0.70
1:A:525:MET:HG2	1:A:574:ALA:HB2	1.73	0.70
1:A:258:LYS:O	1:A:277:TYR:HB3	1.91	0.70
1:A:511:HIS:NE2	1:A:514:GLY:HA2	2.06	0.70
1:A:230:CYS:HA	1:A:242:THR:HG23	1.73	0.69
1:A:279:THR:HG22	1:A:377:TYR:O	1.93	0.69
1:A:338:LEU:HD23	1:A:338:LEU:N	2.07	0.69

Continued on next page...

Continued from previous page...

Atom-1	Atom-2	Interatomic distance (Å)	Clash overlap (Å)
1:A:436:MET:SD	1:A:436:MET:N	2.65	0.69
1:A:520:ASN:CG	1:A:539:SER:HB3	2.13	0.69
1:A:706:TYR:HD1	1:A:706:TYR:H	1.41	0.68
1:A:587[B]:ARG:HG3	1:A:588[B]:GLY:H	1.59	0.67
1:A:520:ASN:HB2	1:A:522:GLY:N	2.09	0.67
1:A:252:TYR:HB3	1:A:376:GLN:NE2	2.10	0.67
1:A:268:SER:OG	1:A:272:ASN:HB2	1.95	0.67
1:A:489:ARG:HB2	1:A:575:THR:HB	1.75	0.67
1:A:509:LYS:HA	1:A:519:VAL:HG13	1.77	0.67
1:A:261:SER:HA	1:A:274:TYR:O	1.94	0.67
1:A:313:LEU:HA	1:A:683:GLU:O	1.95	0.66
1:A:619:ILE:HG23	1:A:620:TRP:CE3	2.30	0.66
1:A:260:ILE:HG22	1:A:274:TYR:HE2	1.60	0.66
1:A:365:PRO:C	1:A:367:PHE:H	1.98	0.66
1:A:560:MET:SD	1:A:726:ARG:HA	2.35	0.66
1:A:316:LYS:HB2	1:A:681:SER:HB2	1.78	0.66
1:A:380:LEU:HD12	1:A:380:LEU:N	2.10	0.66
1:A:296:ARG:NH1	1:A:300:ARG:HD3	2.10	0.65
1:A:573:VAL:HB	1:A:576:GLU:HB2	1.79	0.65
1:A:600:GLN:HG3	1:A:601:GLY:O	1.96	0.65
1:A:355:VAL:HG12	1:A:647:GLN:NE2	2.11	0.64
1:A:613:VAL:HG23	1:A:614:TYR:N	2.12	0.64
1:A:319:ASN:HB2	1:A:679:GLN:OE1	1.98	0.64
1:A:350:TYR:CE1	1:A:643:HIS:HA	2.32	0.64
1:A:269:SER:C	1:A:271:ASP:H	2.01	0.64
1:A:265:SER:HB3	1:A:274:TYR:HE1	1.62	0.64
1:A:405:LEU:HD22	1:A:411:PHE:HB2	1.79	0.64
1:A:657:ALA:HA	1:A:672:ILE:HD11	1.80	0.64
1:A:520:ASN:CA	1:A:522:GLY:N	2.61	0.63
1:A:718:THR:HG23	1:A:719:GLU:OE1	1.96	0.63
1:A:288:ARG:NH2	1:A:363:CYS:SG	2.69	0.63
1:A:342:ILE:CD1	1:A:405:LEU:HB3	2.29	0.63
1:A:520:ASN:HB2	1:A:521:PRO:C	2.18	0.63
1:A:245:ARG:HG3	1:A:245:ARG:HH11	1.64	0.63
1:A:367:PHE:HB2	1:A:722:TYR:HE2	1.63	0.63
1:A:648:ILE:C	1:A:649:LEU:HD12	2.18	0.63
1:A:325:VAL:HG12	1:A:673:THR:O	1.99	0.62
1:A:239:VAL:CG1	1:A:686:TRP:HB2	2.28	0.62
1:A:350:TYR:HE1	1:A:643:HIS:HA	1.63	0.62
1:A:583:THR:HB	1:A:593:ALA:HB3	1.82	0.62
1:A:700:ILE:O	1:A:700:ILE:HD12	2.00	0.62

Continued on next page...

Continued from previous page...

Atom-1	Atom-2	Interatomic distance (Å)	Clash overlap (Å)
1:A:440:ILE:CG2	1:A:441:ASP:H	2.11	0.62
1:A:543:ILE:N	1:A:543:ILE:HD12	2.14	0.62
1:A:688:LEU:N	1:A:688:LEU:HD23	2.14	0.62
1:A:327:GLN:CD	1:A:332:LYS:HB3	2.20	0.62
1:A:490:VAL:CG2	1:A:491:SER:H	2.11	0.62
1:A:397:LEU:H	1:A:397:LEU:HD23	1.64	0.62
1:A:527:SER:CB	1:A:564:GLU:HB2	2.29	0.62
1:A:343:GLN:O	1:A:650:ILE:HD12	2.00	0.62
1:A:349:GLU:CD	1:A:349:GLU:H	2.01	0.62
1:A:287:ASN:C	1:A:619:ILE:HG22	2.20	0.62
1:A:603:LEU:N	1:A:606:MET:SD	2.74	0.61
1:A:687:GLU:C	1:A:688:LEU:HD23	2.21	0.61
1:A:298:TRP:CH2	1:A:615:LEU:HB3	2.35	0.61
1:A:405:LEU:CD1	1:A:409:ASN:HB3	2.30	0.61
1:A:432:LEU:HD23	1:A:569:THR:O	2.01	0.61
1:A:315:PHE:HB3	1:A:413:PHE:CD1	2.36	0.61
1:A:553:ASN:HD22	1:A:553:ASN:H	1.47	0.61
1:A:306:TRP:CZ2	1:A:691:GLU:HG2	2.36	0.61
1:A:730:THR:O	1:A:732:TYR:N	2.34	0.61
1:A:397:LEU:C	1:A:399:TYR:H	2.04	0.61
1:A:527:SER:H	1:A:564:GLU:HB2	1.66	0.61
1:A:649:LEU:HD12	1:A:649:LEU:N	2.15	0.61
1:A:258:LYS:HB2	1:A:278:SER:HB3	1.83	0.60
1:A:311:LYS:NZ	1:A:311:LYS:HB3	2.16	0.60
1:A:553:ASN:HD22	1:A:553:ASN:N	1.98	0.60
1:A:355:VAL:H	1:A:647:GLN:HE22	0.81	0.60
1:A:327:GLN:NE2	1:A:332:LYS:HB3	2.16	0.60
1:A:262:ASN:HD21	1:A:273:ALA:CA	2.06	0.60
1:A:317:LEU:HD12	1:A:679:GLN:O	2.01	0.60
1:A:281:TRP:CG	1:A:397:LEU:HD11	2.37	0.59
1:A:306:TRP:N	1:A:689:GLN:O	2.34	0.59
1:A:339:THR:CA	1:A:406:ARG:HH12	2.14	0.59
1:A:567:ILE:C	1:A:569:THR:H	2.04	0.59
1:A:406:ARG:O	1:A:409:ASN:HB2	2.02	0.59
1:A:457:THR:O	1:A:459:THR:N	2.35	0.59
1:A:289:PHE:HE1	1:A:619:ILE:HA	1.63	0.59
1:A:313:LEU:HD12	1:A:683:GLU:O	2.02	0.59
1:A:490:VAL:CG2	1:A:491:SER:N	2.66	0.59
1:A:322:VAL:C	1:A:323:LYS:HD2	2.23	0.59
1:A:305:ASN:HA	1:A:690:LYS:HA	1.85	0.59
1:A:354:TYR:HE1	1:A:356:LEU:HB2	1.68	0.58

Continued on next page...

Continued from previous page...

Atom-1	Atom-2	Interatomic distance (Å)	Clash overlap (Å)
1:A:684:ILE:HB	1:A:686:TRP:HE1	1.68	0.58
1:A:690:LYS:HD2	1:A:690:LYS:O	2.03	0.58
1:A:292:HIS:ND1	1:A:684:ILE:HD11	2.18	0.58
1:A:487:GLN:HE22	1:A:539:SER:H	1.49	0.58
1:A:365:PRO:C	1:A:367:PHE:N	2.56	0.58
1:A:643:HIS:N	1:A:644:PRO:HD3	2.18	0.58
1:A:289:PHE:CZ	1:A:619:ILE:HG13	2.38	0.58
1:A:613:VAL:CG2	1:A:730:THR:HG23	2.34	0.58
1:A:442:GLN:HE22	1:A:476:ALA:H	1.52	0.57
1:A:672:ILE:N	1:A:672:ILE:HD12	2.19	0.57
1:A:235:MET:SD	1:A:238:ARG:HB2	2.44	0.57
1:A:508:THR:O	1:A:519:VAL:HG22	2.04	0.57
1:A:342:ILE:O	1:A:342:ILE:HD12	2.05	0.57
1:A:452:THR:O	1:A:458:ASN:HA	2.04	0.57
1:A:262:ASN:HA	1:A:265:SER:HB3	1.86	0.57
1:A:542:LEU:C	1:A:543:ILE:HD12	2.25	0.57
1:A:553:ASN:N	1:A:553:ASN:ND2	2.52	0.57
1:A:520:ASN:OD1	1:A:539:SER:HB3	2.05	0.56
1:A:440:ILE:CG2	1:A:441:ASP:N	2.69	0.56
1:A:444:LEU:HD12	1:A:444:LEU:H	1.68	0.56
1:A:717:ASN:ND2	1:A:719:GLU:HB2	2.12	0.56
1:A:435:LEU:HD12	1:A:436:MET:SD	2.46	0.56
1:A:590:ARG:HH12	2:B:1:GU4:H2	1.71	0.56
1:A:641:LEU:HD12	1:A:641:LEU:N	2.19	0.56
1:A:247:TRP:CD1	1:A:680:VAL:HG13	2.41	0.56
1:A:662:THR:HG22	1:A:663:PHE:N	2.21	0.56
1:A:276:GLY:HA3	1:A:379:TYR:O	2.05	0.56
1:A:423:HIS:HE1	1:A:731:ARG:HE	1.52	0.56
1:A:520:ASN:CB	1:A:522:GLY:N	2.68	0.56
1:A:550:GLU:OE1	1:A:552:THR:O	2.23	0.56
1:A:445:TYR:HA	1:A:465:SER:O	2.05	0.56
1:A:296:ARG:HG3	1:A:297:ASP:N	2.21	0.55
1:A:600:GLN:HG3	1:A:601:GLY:N	2.19	0.55
1:A:283:TYR:HE1	1:A:376:GLN:O	1.88	0.55
1:A:525:MET:HE1	1:A:572:PRO:CD	2.32	0.55
1:A:528:HIS:HA	1:A:573:VAL:CG1	2.37	0.55
1:A:273:ALA:HB1	1:A:383:ASN:HD21	1.71	0.55
1:A:422:PHE:N	1:A:422:PHE:CD1	2.73	0.55
1:A:457:THR:O	1:A:459:THR:HG23	2.06	0.55
1:A:262:ASN:CG	1:A:273:ALA:HA	2.25	0.55
1:A:435:LEU:HD12	1:A:436:MET:HG3	1.89	0.55

Continued on next page...

Continued from previous page...

Atom-1	Atom-2	Interatomic distance (Å)	Clash overlap (Å)
1:A:631:HIS:O	1:A:633:SER:N	2.35	0.55
1:A:301:LEU:HD21	1:A:308:PHE:CD1	2.42	0.55
1:A:444:LEU:N	1:A:444:LEU:CD1	2.70	0.55
1:A:484:CYS:SG	1:A:600:GLN:HB3	2.46	0.55
1:A:641:LEU:HD22	1:A:644:PRO:HA	1.87	0.55
1:A:695:ARG:HG3	1:A:697:ASN:O	2.07	0.55
1:A:281:TRP:CD2	1:A:397:LEU:HD11	2.43	0.55
1:A:233:THR:O	1:A:239:VAL:HG23	2.07	0.54
1:A:442:GLN:HE22	1:A:476:ALA:N	2.04	0.54
1:A:461:THR:O	1:A:462:LEU:HD23	2.07	0.54
1:A:616:GLN:CD	1:A:727:PRO:HA	2.27	0.54
1:A:269:SER:O	1:A:271:ASP:N	2.40	0.54
1:A:303:ASN:HB3	1:A:701:GLN:OE1	2.07	0.54
1:A:663:PHE:CG	1:A:664:ASN:N	2.75	0.54
1:A:246:THR:HG23	1:A:678:GLY:O	2.07	0.54
1:A:650:ILE:HG13	1:A:651:LYS:N	2.22	0.54
1:A:262:ASN:OD1	1:A:274:TYR:N	2.38	0.54
1:A:253:ASN:HD21	1:A:376:GLN:NE2	2.06	0.54
1:A:297:ASP:O	1:A:300:ARG:HB3	2.07	0.54
1:A:315:PHE:HB3	1:A:413:PHE:HD1	1.72	0.54
1:A:318:PHE:CE1	1:A:679:GLN:HB2	2.42	0.54
1:A:397:LEU:HD23	1:A:397:LEU:N	2.22	0.54
1:A:288:ARG:O	1:A:292:HIS:HD2	1.91	0.53
1:A:737:LEU:HD23	1:A:737:LEU:OXT	2.08	0.53
1:A:334:ILE:HD12	1:A:334:ILE:N	2.22	0.53
1:A:230:CYS:HG	1:A:243:SER:HA	1.72	0.53
1:A:306:TRP:O	1:A:425:SER:HB2	2.08	0.53
1:A:583:THR:HB	1:A:593:ALA:CB	2.38	0.53
1:A:713:ASP:HB3	1:A:725:PRO:HG2	1.89	0.53
2:B:1:GU4:C1	2:B:2:YYJ:O3	2.57	0.53
1:A:273:ALA:HB3	1:A:515:ARG:HH21	1.73	0.53
1:A:309:ARG:HG2	1:A:687:GLU:HB3	1.91	0.53
1:A:536:PHE:HB2	1:A:537:PRO:HD2	1.91	0.53
1:A:332:LYS:C	1:A:332:LYS:HD2	2.29	0.53
1:A:452:THR:O	1:A:452:THR:HG23	2.08	0.53
1:A:308:PHE:HE2	1:A:423:HIS:HB3	1.74	0.53
1:A:712:VAL:HB	1:A:715:ALA:HB2	1.91	0.53
1:A:546:LYS:HG3	1:A:558:LYS:O	2.09	0.53
1:A:603:LEU:HD12	1:A:603:LEU:N	2.24	0.52
1:A:615:LEU:N	1:A:615:LEU:HD23	2.25	0.52
1:A:270:ASN:O	1:A:515:ARG:HA	2.08	0.52

Continued on next page...

Continued from previous page...

Atom-1	Atom-2	Interatomic distance (Å)	Clash overlap (Å)
1:A:374:ILE:HD12	1:A:374:ILE:N	2.25	0.52
1:A:296:ARG:CZ	1:A:300:ARG:HD3	2.39	0.52
1:A:321:GLN:O	1:A:676:SER:HA	2.09	0.52
1:A:261:SER:C	1:A:263:SER:H	2.13	0.52
1:A:511:HIS:NE2	1:A:514:GLY:CA	2.73	0.52
1:A:710:THR:HG23	1:A:711:SER:N	2.24	0.52
1:A:390:GLY:C	1:A:392:SER:H	2.13	0.52
1:A:397:LEU:H	1:A:397:LEU:CD2	2.22	0.52
1:A:614:TYR:O	1:A:617:GLY:N	2.43	0.52
1:A:489:ARG:CG	1:A:535:PHE:HB3	2.40	0.52
1:A:339:THR:C	1:A:406:ARG:HH12	2.14	0.52
1:A:238:ARG:HA	1:A:686:TRP:O	2.10	0.51
1:A:376:GLN:HG2	1:A:377:TYR:H	1.75	0.51
1:A:613:VAL:HG23	1:A:614:TYR:H	1.74	0.51
1:A:279:THR:HG21	1:A:377:TYR:HD2	1.75	0.51
1:A:367:PHE:CG	1:A:368:PRO:HD2	2.46	0.51
1:A:398:GLU:H	1:A:398:GLU:CD	2.14	0.51
1:A:296:ARG:C	1:A:296:ARG:HD2	2.30	0.51
1:A:442:GLN:C	1:A:444:LEU:H	2.12	0.51
1:A:498:ASN:HD22	1:A:499:ASN:H	1.56	0.51
1:A:600:GLN:CG	1:A:601:GLY:N	2.73	0.51
1:A:472:MET:HA	1:A:475:GLN:CD	2.30	0.51
1:A:564:GLU:C	1:A:566:GLU:H	2.13	0.51
1:A:376:GLN:HG2	1:A:377:TYR:N	2.26	0.51
1:A:260:ILE:HG22	1:A:274:TYR:CE2	2.45	0.51
1:A:407:THR:C	1:A:409:ASN:H	2.15	0.51
1:A:298:TRP:CZ3	1:A:615:LEU:HB3	2.46	0.51
1:A:627:ASP:OD1	1:A:628:GLY:N	2.43	0.50
1:A:697:ASN:OD1	1:A:698:PRO:HD2	2.11	0.50
1:A:512:LEU:HD13	1:A:512:LEU:C	2.32	0.50
1:A:715:ALA:O	1:A:722:TYR:HB2	2.10	0.50
1:A:700:ILE:HD12	1:A:700:ILE:C	2.31	0.50
1:A:225:SER:CB	1:A:318:PHE:HB2	2.41	0.50
1:A:486:ARG:NE	1:A:577:GLN:HA	2.25	0.50
1:A:560:MET:SD	1:A:727:PRO:HD3	2.51	0.50
1:A:268:SER:CB	1:A:272:ASN:HB2	2.41	0.50
1:A:275:PHE:CD2	1:A:388:ALA:HB2	2.47	0.50
1:A:288:ARG:CZ	1:A:290:HIS:NE2	2.75	0.50
1:A:589[B]:ASN:OD1	1:A:590:ARG:N	2.45	0.50
1:A:509:LYS:HB2	1:A:517:SER:O	2.11	0.50
1:A:564:GLU:OE1	1:A:564:GLU:HA	2.12	0.50

Continued on next page...

Continued from previous page...

Atom-1	Atom-2	Interatomic distance (Å)	Clash overlap (Å)
1:A:586[A]:GLN:HB3	1:A:592:ALA:CB	2.42	0.50
1:A:247:TRP:HD1	1:A:680:VAL:HG13	1.77	0.50
1:A:567:ILE:O	1:A:569:THR:N	2.44	0.50
1:A:716:VAL:HG23	1:A:716:VAL:O	2.12	0.50
1:A:608:TRP:CE3	1:A:608:TRP:N	2.80	0.50
1:A:389:VAL:HG12	1:A:391:ARG:H	1.77	0.49
1:A:308:PHE:N	1:A:308:PHE:CD2	2.80	0.49
1:A:631:HIS:C	1:A:633:SER:H	2.13	0.49
1:A:615:LEU:C	1:A:617:GLY:H	2.14	0.49
1:A:308:PHE:H	1:A:308:PHE:HD2	1.60	0.49
1:A:317:LEU:HD13	1:A:680:VAL:HG12	1.93	0.49
1:A:587[B]:ARG:HD3	1:A:589[B]:ASN:ND2	2.26	0.49
1:A:233:THR:HG22	1:A:240:ILE:O	2.12	0.49
1:A:311:LYS:HB3	1:A:311:LYS:HZ2	1.78	0.49
1:A:245:ARG:O	1:A:679:GLN:HA	2.13	0.49
1:A:249:LEU:HD12	1:A:652:ASN:OD1	2.12	0.49
1:A:413:PHE:CG	1:A:414:THR:N	2.81	0.49
1:A:537:PRO:HB2	1:A:540:GLY:HA3	1.93	0.49
1:A:298:TRP:CZ2	1:A:615:LEU:HB3	2.47	0.49
1:A:324:GLU:HA	1:A:674:GLN:HB3	1.94	0.49
1:A:405:LEU:HD11	1:A:409:ASN:HB3	1.93	0.49
1:A:671:PHE:C	1:A:672:ILE:HD12	2.33	0.49
1:A:253:ASN:ND2	1:A:376:GLN:NE2	2.60	0.49
1:A:581:VAL:HG13	1:A:597:VAL:HG21	1.94	0.49
1:A:710:THR:HG23	1:A:711:SER:H	1.78	0.49
1:A:442:GLN:NE2	1:A:476:ALA:H	2.11	0.48
1:A:612:ASP:CG	1:A:613:VAL:H	2.16	0.48
1:A:305:ASN:OD1	1:A:690:LYS:HB3	2.13	0.48
1:A:430:GLN:NE2	1:A:737:LEU:HB3	2.27	0.48
1:A:453:THR:HG22	1:A:453:THR:O	2.13	0.48
1:A:230:CYS:HB2	1:A:244:THR:H	1.78	0.48
1:A:447:LEU:HA	1:A:464:PHE:CD1	2.47	0.48
1:A:613:VAL:HG21	1:A:730:THR:HG23	1.94	0.48
1:A:587[B]:ARG:CG	1:A:588[B]:GLY:H	2.16	0.48
1:A:252:TYR:C	1:A:254:ASN:N	2.67	0.48
1:A:389:VAL:HG12	1:A:390:GLY:N	2.28	0.48
1:A:449:ARG:HH11	1:A:449:ARG:HG2	1.78	0.48
1:A:702:TYR:HB2	1:A:732:TYR:CE2	2.48	0.48
1:A:243:SER:HB3	1:A:245:ARG:NH1	2.28	0.48
1:A:467:GLY:HA2	1:A:475:GLN:HG2	1.95	0.48
1:A:273:ALA:HB3	1:A:515:ARG:NH2	2.29	0.48

Continued on next page...

Continued from previous page...

Atom-1	Atom-2	Interatomic distance (Å)	Clash overlap (Å)
1:A:332:LYS:HD2	1:A:332:LYS:O	2.14	0.48
1:A:260:ILE:HD13	1:A:277:TYR:C	2.33	0.48
1:A:422:PHE:HE2	1:A:687:GLU:HG3	1.79	0.48
1:A:490:VAL:O	1:A:535:PHE:HA	2.13	0.48
1:A:498:ASN:ND2	1:A:499:ASN:N	2.55	0.48
1:A:249:LEU:HD12	1:A:652:ASN:CG	2.34	0.48
1:A:442:GLN:HB3	1:A:444:LEU:HD13	1.95	0.48
1:A:479:TRP:HA	1:A:479:TRP:CE3	2.49	0.48
1:A:249:LEU:C	1:A:249:LEU:HD13	2.34	0.48
1:A:713:ASP:CB	1:A:725:PRO:HG2	2.44	0.48
1:A:235:MET:CG	1:A:238:ARG:HB2	2.45	0.47
1:A:306:TRP:CE2	1:A:691:GLU:HA	2.49	0.47
1:A:347:ASP:OD1	1:A:350:TYR:N	2.46	0.47
1:A:526:ALA:HB3	1:A:572:PRO:O	2.14	0.47
1:A:602:VAL:HG22	1:A:603:LEU:N	2.29	0.47
1:A:225:SER:HB2	1:A:318:PHE:HB2	1.96	0.47
1:A:309:ARG:HE	1:A:311:LYS:HD3	1.79	0.47
1:A:452:THR:C	1:A:454:GLY:H	2.17	0.47
1:A:550:GLU:HG2	1:A:554:VAL:CG2	2.39	0.47
1:A:293:PHE:HB3	1:A:297:ASP:OD2	2.15	0.47
1:A:294:SER:CB	1:A:297:ASP:OD1	2.60	0.47
1:A:672:ILE:O	1:A:674:GLN:HG2	2.15	0.47
1:A:289:PHE:HB2	1:A:615:LEU:HA	1.95	0.47
1:A:423:HIS:HB2	1:A:639:PHE:CE1	2.49	0.47
1:A:432:LEU:O	1:A:435:LEU:HG	2.14	0.47
1:A:355:VAL:HG13	1:A:356:LEU:N	2.29	0.47
1:A:365:PRO:O	1:A:367:PHE:N	2.48	0.47
1:A:527:SER:HB3	1:A:564:GLU:HB2	1.97	0.47
1:A:612:ASP:OD2	1:A:729:GLY:HA2	2.15	0.47
1:A:365:PRO:HB2	1:A:367:PHE:O	2.15	0.47
1:A:397:LEU:O	1:A:399:TYR:N	2.47	0.47
1:A:525:MET:HG3	1:A:526:ALA:N	2.27	0.47
1:A:594:THR:HG23	1:A:594:THR:O	2.15	0.47
1:A:650:ILE:HD12	1:A:651:LYS:H	1.79	0.47
1:A:301:LEU:HD21	1:A:308:PHE:CE1	2.49	0.47
1:A:329:GLU:C	1:A:331:THR:H	2.17	0.47
1:A:255:HIS:HA	1:A:280:PRO:HB3	1.97	0.47
1:A:315:PHE:CD1	1:A:316:LYS:N	2.82	0.47
1:A:486:ARG:HH21	1:A:577:GLN:CA	2.28	0.47
1:A:513:ASN:HD22	1:A:515:ARG:HD2	1.80	0.47
1:A:342:ILE:HB	1:A:650:ILE:HD11	1.96	0.47

Continued on next page...

Continued from previous page...

Atom-1	Atom-2	Interatomic distance (Å)	Clash overlap (Å)
1:A:528:HIS:HA	1:A:573:VAL:HG13	1.97	0.47
1:A:252:TYR:CD2	1:A:376:GLN:HB2	2.50	0.46
1:A:296:ARG:O	1:A:299:GLN:HB3	2.15	0.46
1:A:724:GLU:N	1:A:724:GLU:OE2	2.48	0.46
1:A:275:PHE:HB2	1:A:383:ASN:CB	2.45	0.46
1:A:493:THR:HG22	1:A:494:SER:N	2.30	0.46
1:A:623:ILE:HG13	1:A:641:LEU:N	2.29	0.46
1:A:680:VAL:HG23	1:A:680:VAL:O	2.15	0.46
1:A:446:TYR:CE2	1:A:474:ASN:HB3	2.50	0.46
1:A:486:ARG:HH21	1:A:577:GLN:CB	2.28	0.46
1:A:613:VAL:HG22	1:A:730:THR:HG23	1.97	0.46
1:A:486:ARG:HH21	1:A:577:GLN:HA	1.80	0.46
1:A:520:ASN:ND2	1:A:539:SER:HB3	2.30	0.46
1:A:527:SER:HB2	1:A:564:GLU:HB2	1.98	0.46
1:A:717:ASN:C	1:A:719:GLU:H	2.19	0.46
1:A:341:THR:HG22	1:A:406:ARG:HB2	1.97	0.46
1:A:442:GLN:C	1:A:444:LEU:N	2.69	0.46
1:A:510:TYR:CD1	1:A:510:TYR:C	2.88	0.46
1:A:529:LYS:HG3	1:A:532:GLU:HG3	1.96	0.46
1:A:444:LEU:H	1:A:444:LEU:CD1	2.28	0.46
1:A:585[B]:LEU:H	1:A:585[B]:LEU:CD2	2.14	0.46
1:A:283:TYR:HA	1:A:648:ILE:O	2.16	0.46
1:A:397:LEU:C	1:A:399:TYR:N	2.68	0.46
1:A:438:PRO:HG2	1:A:439:LEU:CD2	2.35	0.46
1:A:630:PHE:O	1:A:631:HIS:C	2.55	0.46
1:A:260:ILE:N	1:A:276:GLY:O	2.47	0.46
1:A:262:ASN:HA	1:A:274:TYR:CE1	2.51	0.46
1:A:449:ARG:HG2	1:A:449:ARG:NH1	2.31	0.45
1:A:430:GLN:N	1:A:430:GLN:OE1	2.50	0.45
1:A:587[B]:ARG:HD3	1:A:589[B]:ASN:HD21	1.82	0.45
1:A:258:LYS:HB2	1:A:260:ILE:HD11	1.99	0.45
1:A:269:SER:C	1:A:271:ASP:N	2.67	0.45
1:A:527:SER:H	1:A:564:GLU:CB	2.27	0.45
1:A:246:THR:HA	1:A:678:GLY:O	2.15	0.45
1:A:298:TRP:HE1	1:A:728:ILE:CG2	2.29	0.45
1:A:480:LEU:O	1:A:606:MET:HA	2.16	0.45
1:A:273:ALA:HB1	1:A:385:GLY:HA2	1.98	0.45
1:A:322:VAL:HG22	1:A:676:SER:OG	2.16	0.45
1:A:265:SER:HB3	1:A:274:TYR:CE1	2.48	0.45
1:A:472:MET:HG2	1:A:475:GLN:OE1	2.16	0.45
1:A:247:TRP:HB2	1:A:374:ILE:CD1	2.46	0.45

Continued on next page...

Continued from previous page...

Atom-1	Atom-2	Interatomic distance (Å)	Clash overlap (Å)
1:A:281:TRP:CD1	1:A:397:LEU:HD21	2.52	0.45
1:A:275:PHE:HB2	1:A:383:ASN:HB3	1.97	0.45
1:A:522:GLY:HA2	1:A:523:PRO:HD3	1.69	0.45
1:A:523:PRO:HG2	1:A:525:MET:HB2	1.98	0.45
1:A:527:SER:O	1:A:573:VAL:HG13	2.17	0.45
1:A:708:LYS:O	1:A:708:LYS:HG3	2.17	0.45
1:A:291:CYS:HA	1:A:366:PRO:HA	1.99	0.45
1:A:480:LEU:HD12	1:A:480:LEU:HA	1.80	0.45
1:A:342:ILE:HD12	1:A:342:ILE:C	2.37	0.44
1:A:468:GLY:C	1:A:470:ASN:H	2.21	0.44
1:A:479:TRP:HA	1:A:479:TRP:HE3	1.82	0.44
1:A:297:ASP:OD1	1:A:297:ASP:N	2.47	0.44
1:A:343:GLN:NE2	1:A:651:LYS:O	2.50	0.44
1:A:510:TYR:HD1	1:A:511:HIS:N	2.15	0.44
1:A:706:TYR:CD1	1:A:706:TYR:N	2.73	0.44
1:A:315:PHE:CD1	1:A:315:PHE:C	2.91	0.44
1:A:439:LEU:HD22	1:A:439:LEU:H	1.83	0.44
1:A:439:LEU:HD22	1:A:439:LEU:N	2.32	0.44
1:A:567:ILE:C	1:A:569:THR:N	2.70	0.44
1:A:623:ILE:HG13	1:A:641:LEU:H	1.82	0.44
1:A:273:ALA:HB1	1:A:383:ASN:ND2	2.33	0.44
1:A:275:PHE:CB	1:A:383:ASN:HB3	2.47	0.44
1:A:367:PHE:HB2	1:A:722:TYR:CE2	2.49	0.44
1:A:240:ILE:HG12	1:A:685:GLU:HG2	1.99	0.44
1:A:415:TYR:CG	1:A:416:THR:N	2.85	0.44
1:A:428:HIS:CD2	1:A:737:LEU:HA	2.53	0.44
1:A:528:HIS:HA	1:A:573:VAL:HG11	1.99	0.44
1:A:294:SER:C	1:A:297:ASP:OD1	2.56	0.44
1:A:355:VAL:HG12	1:A:647:GLN:HE22	1.81	0.44
1:A:447:LEU:HD13	1:A:464:PHE:CE1	2.52	0.44
1:A:650:ILE:CG1	1:A:651:LYS:N	2.80	0.44
1:A:541:VAL:HB	1:A:562:THR:HG1	1.79	0.44
1:A:586[A]:GLN:CB	1:A:592:ALA:HB2	2.48	0.44
1:A:245:ARG:HH11	1:A:245:ARG:CG	2.28	0.44
1:A:294:SER:O	1:A:297:ASP:OD1	2.35	0.44
1:A:289:PHE:C	1:A:291:CYS:H	2.21	0.43
1:A:717:ASN:CG	1:A:719:GLU:H	2.22	0.43
1:A:413:PHE:CD1	1:A:413:PHE:C	2.92	0.43
1:A:614:TYR:O	1:A:616:GLN:N	2.52	0.43
1:A:712:VAL:O	1:A:715:ALA:HB3	2.18	0.43
1:A:239:VAL:HG13	1:A:239:VAL:O	2.18	0.43

Continued on next page...

Continued from previous page...

Atom-1	Atom-2	Interatomic distance (Å)	Clash overlap (Å)
1:A:296:ARG:HH12	1:A:300:ARG:HD3	1.80	0.43
1:A:308:PHE:N	1:A:308:PHE:HD2	2.15	0.43
1:A:379:TYR:N	1:A:379:TYR:CD1	2.86	0.43
1:A:435:LEU:HD12	1:A:436:MET:CG	2.48	0.43
1:A:584[A]:ASN:CG	1:A:585[A]:LEU:N	2.71	0.43
2:B:1:GU4:H3	2:B:1:GU4:O11	2.19	0.43
1:A:245:ARG:CZ	1:A:368:PRO:HA	2.48	0.43
1:A:287:ASN:ND2	1:A:620:TRP:CE2	2.86	0.43
1:A:487:GLN:HA	1:A:508:THR:CG2	2.35	0.43
1:A:651:LYS:CG	1:A:652:ASN:N	2.81	0.43
1:A:283:TYR:CE1	1:A:376:GLN:O	2.70	0.43
1:A:480:LEU:N	1:A:605:GLY:O	2.52	0.43
1:A:332:LYS:HD3	1:A:334:ILE:HD11	2.01	0.43
1:A:662:THR:CG2	1:A:663:PHE:N	2.82	0.43
1:A:325:VAL:O	1:A:325:VAL:HG13	2.17	0.43
1:A:296:ARG:HD2	1:A:296:ARG:O	2.19	0.43
1:A:246:THR:HB	1:A:371:VAL:HG12	2.01	0.43
1:A:667:LYS:H	1:A:667:LYS:HG3	1.53	0.43
1:A:239:VAL:HG12	1:A:688:LEU:HD22	2.01	0.42
1:A:247:TRP:HE1	1:A:317:LEU:CD1	2.22	0.42
1:A:648:ILE:HD13	1:A:648:ILE:N	2.33	0.42
1:A:542:LEU:HB2	1:A:562:THR:HG21	2.00	0.42
1:A:288:ARG:CZ	1:A:290:HIS:CE1	3.02	0.42
1:A:364:LEU:HD23	1:A:365:PRO:CD	2.50	0.42
1:A:571:ASN:HA	1:A:572:PRO:HD3	1.88	0.42
1:A:584[A]:ASN:CG	1:A:585[A]:LEU:H	2.22	0.42
1:A:432:LEU:N	1:A:432:LEU:HD22	2.34	0.42
1:A:657:ALA:HB3	1:A:670:SER:HB2	2.00	0.42
1:A:246:THR:HG22	1:A:247:TRP:N	2.34	0.42
1:A:315:PHE:HD1	1:A:316:LYS:N	2.17	0.42
1:A:344:VAL:HG22	1:A:345:PHE:N	2.34	0.42
1:A:687:GLU:OE2	1:A:687:GLU:HA	2.19	0.42
1:A:317:LEU:HA	1:A:679:GLN:O	2.20	0.42
1:A:423:HIS:O	1:A:425:SER:N	2.52	0.42
1:A:535:PHE:CD1	1:A:535:PHE:N	2.87	0.42
1:A:409:ASN:HD22	1:A:409:ASN:HA	1.54	0.42
1:A:554:VAL:HG12	1:A:555:ASP:N	2.35	0.42
1:A:585[B]:LEU:O	1:A:586[B]:GLN:O	2.38	0.42
1:A:312:ARG:HB2	1:A:685:GLU:HB2	2.02	0.42
1:A:567:ILE:N	1:A:567:ILE:HD13	2.35	0.42
1:A:586[A]:GLN:HB3	1:A:592:ALA:HA	2.01	0.42

Continued on next page...

Continued from previous page...

Atom-1	Atom-2	Interatomic distance (Å)	Clash overlap (Å)
1:A:695:ARG:HG2	1:A:695:ARG:HH11	1.84	0.42
1:A:554:VAL:CG1	1:A:558:LYS:HG3	2.50	0.42
1:A:682:VAL:HG23	1:A:682:VAL:O	2.20	0.42
1:A:519:VAL:HG23	1:A:519:VAL:O	2.20	0.42
1:A:590:ARG:NH1	2:B:1:GU4:H2	2.35	0.42
1:A:287:ASN:HB2	1:A:356:LEU:HD23	2.02	0.41
1:A:287:ASN:OD1	1:A:619:ILE:HG22	2.19	0.41
1:A:402:SER:O	1:A:404:MET:N	2.53	0.41
1:A:225:SER:H	1:A:319:ASN:ND2	2.04	0.41
1:A:228:TRP:NE1	1:A:244:THR:HB	2.35	0.41
1:A:282:GLY:O	1:A:649:LEU:HA	2.20	0.41
1:A:735:ARG:HG2	1:A:735:ARG:HH11	1.86	0.41
1:A:312:ARG:HB2	1:A:685:GLU:CD	2.40	0.41
1:A:242:THR:HA	1:A:682:VAL:O	2.21	0.41
1:A:343:GLN:CD	1:A:343:GLN:N	2.74	0.41
1:A:350:TYR:OH	1:A:644:PRO:O	2.31	0.41
1:A:623:ILE:HD12	1:A:641:LEU:C	2.40	0.41
1:A:707:TYR:HE1	1:A:709:SER:HB2	1.85	0.41
1:A:492:LYS:N	1:A:534:LYS:O	2.51	0.41
1:A:502:TYR:HB2	1:A:506:GLY:HA3	2.02	0.41
1:A:613:VAL:CG2	1:A:614:TYR:N	2.81	0.41
1:A:489:ARG:HG2	1:A:535:PHE:HD2	1.85	0.41
1:A:513:ASN:C	1:A:515:ARG:H	2.24	0.41
1:A:308:PHE:CE2	1:A:423:HIS:HB3	2.56	0.41
1:A:472:MET:O	1:A:475:GLN:HB2	2.21	0.41
1:A:306:TRP:CD2	1:A:691:GLU:HA	2.56	0.41
1:A:322:VAL:HA	1:A:676:SER:OG	2.21	0.41
1:A:380:LEU:N	1:A:380:LEU:CD1	2.80	0.41
1:A:285:ASP:OD2	1:A:363:CYS:N	2.54	0.41
1:A:426:TYR:CD2	1:A:735:ARG:HD2	2.55	0.40
1:A:452:THR:HG22	1:A:459:THR:N	2.36	0.40
1:A:491:SER:HA	1:A:534:LYS:O	2.20	0.40
1:A:285:ASP:O	1:A:363:CYS:CA	2.64	0.40
1:A:289:PHE:C	1:A:291:CYS:N	2.74	0.40
1:A:374:ILE:N	1:A:374:ILE:CD1	2.84	0.40
1:A:397:LEU:HA	1:A:400:PHE:HD2	1.86	0.40
1:A:482:GLY:HA3	1:A:608:TRP:HB3	2.04	0.40
1:A:490:VAL:HG12	1:A:536:PHE:O	2.22	0.40
1:A:737:LEU:HD23	1:A:737:LEU:C	2.41	0.40
1:A:509:LYS:CA	1:A:519:VAL:HG13	2.50	0.40
1:A:277:TYR:CD1	1:A:277:TYR:N	2.90	0.40

Continued on next page...

Continued from previous page...

Atom-1	Atom-2	Interatomic distance (Å)	Clash overlap (Å)
1:A:260:ILE:N	1:A:260:ILE:CD1	2.74	0.40
1:A:428:HIS:HD2	1:A:737:LEU:HG	1.87	0.40
1:A:435:LEU:N	1:A:436:MET:SD	2.95	0.40

There are no symmetry-related clashes.

5.3 Torsion angles [i](#)

5.3.1 Protein backbone [i](#)

In the following table, the Percentiles column shows the percent Ramachandran outliers of the chain as a percentile score with respect to all PDB entries followed by that with respect to all EM entries.

The Analysed column shows the number of residues for which the backbone conformation was analysed, and the total number of residues.

Mol	Chain	Analysed	Favoured	Allowed	Outliers	Percentiles
1	A	521/517 (101%)	432 (83%)	65 (12%)	24 (5%)	2 23

All (24) Ramachandran outliers are listed below:

Mol	Chain	Res	Type
1	A	270	ASN
1	A	458	ASN
1	A	521	PRO
1	A	523	PRO
1	A	553	ASN
1	A	586[A]	GLN
1	A	586[B]	GLN
1	A	398	GLU
1	A	403	GLN
1	A	424	SER
1	A	467	GLY
1	A	568	ARG
1	A	657	ALA
1	A	731	ARG
1	A	615	LEU
1	A	632	PRO
1	A	438	PRO
1	A	565	GLU

Continued on next page...

Continued from previous page...

Mol	Chain	Res	Type
1	A	368	PRO
1	A	391	ARG
1	A	475	GLN
1	A	718	THR
1	A	393	SER
1	A	666	SER

5.3.2 Protein sidechains ⓘ

In the following table, the Percentiles column shows the percent sidechain outliers of the chain as a percentile score with respect to all PDB entries followed by that with respect to all EM entries.

The Analysed column shows the number of residues for which the sidechain conformation was analysed, and the total number of residues.

Mol	Chain	Analysed	Rotameric	Outliers	Percentiles	
1	A	463/458 (101%)	420 (91%)	43 (9%)	9	30

All (43) residues with a non-rotameric sidechain are listed below:

Mol	Chain	Res	Type
1	A	271	ASP
1	A	290	HIS
1	A	296	ARG
1	A	308	PHE
1	A	315	PHE
1	A	320	ILE
1	A	327	GLN
1	A	332	LYS
1	A	338	LEU
1	A	345	PHE
1	A	370	ASP
1	A	372	PHE
1	A	380	LEU
1	A	409	ASN
1	A	413	PHE
1	A	418	GLU
1	A	422	PHE
1	A	430	GLN
1	A	435	LEU
1	A	436	MET

Continued on next page...

Continued from previous page...

Mol	Chain	Res	Type
1	A	444	LEU
1	A	460	GLN
1	A	466	GLN
1	A	486	ARG
1	A	487	GLN
1	A	498	ASN
1	A	502	TYR
1	A	523	PRO
1	A	525	MET
1	A	553	ASN
1	A	555	ASP
1	A	591	GLN
1	A	598	ASN
1	A	648	ILE
1	A	667	LYS
1	A	688	LEU
1	A	690	LYS
1	A	691	GLU
1	A	692	ASN
1	A	699	GLU
1	A	706	TYR
1	A	719	GLU
1	A	722	TYR

Sometimes sidechains can be flipped to improve hydrogen bonding and reduce clashes. All (20) such sidechains are listed below:

Mol	Chain	Res	Type
1	A	272	ASN
1	A	319	ASN
1	A	327	GLN
1	A	343	GLN
1	A	351	GLN
1	A	376	GLN
1	A	387	GLN
1	A	409	ASN
1	A	428	HIS
1	A	475	GLN
1	A	487	GLN
1	A	498	ASN
1	A	513	ASN
1	A	553	ASN
1	A	647	GLN

Continued on next page...

Continued from previous page...

Mol	Chain	Res	Type
1	A	664	ASN
1	A	674	GLN
1	A	692	ASN
1	A	697	ASN
1	A	717	ASN

5.3.3 RNA ⓘ

There are no RNA molecules in this entry.

5.4 Non-standard residues in protein, DNA, RNA chains ⓘ

There are no non-standard protein/DNA/RNA residues in this entry.

5.5 Carbohydrates ⓘ

2 monosaccharides are modelled in this entry.

In the following table, the Counts columns list the number of bonds (or angles) for which Mogul statistics could be retrieved, the number of bonds (or angles) that are observed in the model and the number of bonds (or angles) that are defined in the Chemical Component Dictionary. The Link column lists molecule types, if any, to which the group is linked. The Z score for a bond length (or angle) is the number of standard deviations the observed value is removed from the expected value. A bond length (or angle) with $|Z| > 2$ is considered an outlier worth inspection. RMSZ is the root-mean-square of all Z scores of the bond lengths (or angles).

Mol	Type	Chain	Res	Link	Bond lengths			Bond angles		
					Counts	RMSZ	$\# Z > 2$	Counts	RMSZ	$\# Z > 2$
2	GU4	B	1	2,3	27,27,28	2.16	8 (29%)	29,43,45	4.11	7 (24%)
2	YYJ	B	2	2	27,28,28	2.07	7 (25%)	28,46,46	1.38	4 (14%)

In the following table, the Chirals column lists the number of chiral outliers, the number of chiral centers analysed, the number of these observed in the model and the number defined in the Chemical Component Dictionary. Similar counts are reported in the Torsion and Rings columns. '-' means no outliers of that kind were identified.

Mol	Type	Chain	Res	Link	Chirals	Torsions	Rings
2	GU4	B	1	2,3	-	15/21/38/41	0/1/1/1
2	YYJ	B	2	2	-	16/23/42/42	0/1/1/1

All (15) bond length outliers are listed below:

Mol	Chain	Res	Type	Atoms	Z	Observed(Å)	Ideal(Å)
2	B	1	GU4	O2-C2	-5.15	1.39	1.47
2	B	2	YYJ	O1-C1	-4.43	1.38	1.45
2	B	2	YYJ	O3-C3	-4.39	1.38	1.47
2	B	1	GU4	O6-S6	-3.80	1.46	1.56
2	B	2	YYJ	O6-S6	-3.77	1.46	1.56
2	B	2	YYJ	O3-S3	-3.76	1.46	1.57
2	B	1	GU4	O3-S3	-3.69	1.46	1.57
2	B	2	YYJ	O1-S1	-3.67	1.47	1.56
2	B	2	YYJ	O4-S4	-3.58	1.46	1.57
2	B	1	GU4	O2-S2	-3.55	1.46	1.57
2	B	1	GU4	O3-C3	-3.54	1.39	1.46
2	B	1	GU4	O4-S4	-3.52	1.46	1.57
2	B	2	YYJ	O4-C4	-3.23	1.39	1.46
2	B	1	GU4	O4-C4	-3.09	1.40	1.46
2	B	1	GU4	C1-C2	2.14	1.55	1.51

All (11) bond angle outliers are listed below:

Mol	Chain	Res	Type	Atoms	Z	Observed(°)	Ideal(°)
2	B	1	GU4	C4-O4-S4	15.31	148.45	118.88
2	B	1	GU4	C3-O3-S3	13.65	145.25	118.88
2	B	1	GU4	C2-O2-S2	5.17	124.65	117.91
2	B	1	GU4	C4-C3-C2	3.93	118.76	110.55
2	B	2	YYJ	C4-O4-S4	3.84	126.29	118.88
2	B	2	YYJ	O2-C2-O5	-3.83	102.11	109.50
2	B	1	GU4	C1-C2-C3	2.78	113.56	109.40
2	B	1	GU4	O3-C3-C4	2.59	114.17	108.48
2	B	2	YYJ	O2-C2-C3	2.45	117.37	109.74
2	B	2	YYJ	O5-C5-C4	2.43	107.55	103.49
2	B	1	GU4	O5-C5-C6	-2.37	102.35	107.61

There are no chirality outliers.

All (31) torsion outliers are listed below:

Mol	Chain	Res	Type	Atoms
2	B	1	GU4	O5-C5-C6-O6
2	B	1	GU4	C4-C5-C6-O6
2	B	1	GU4	C6-O6-S6-O22
2	B	1	GU4	C6-O6-S6-O23
2	B	1	GU4	C6-O6-S6-O21
2	B	1	GU4	C5-C4-O4-S4

Continued on next page...

Continued from previous page...

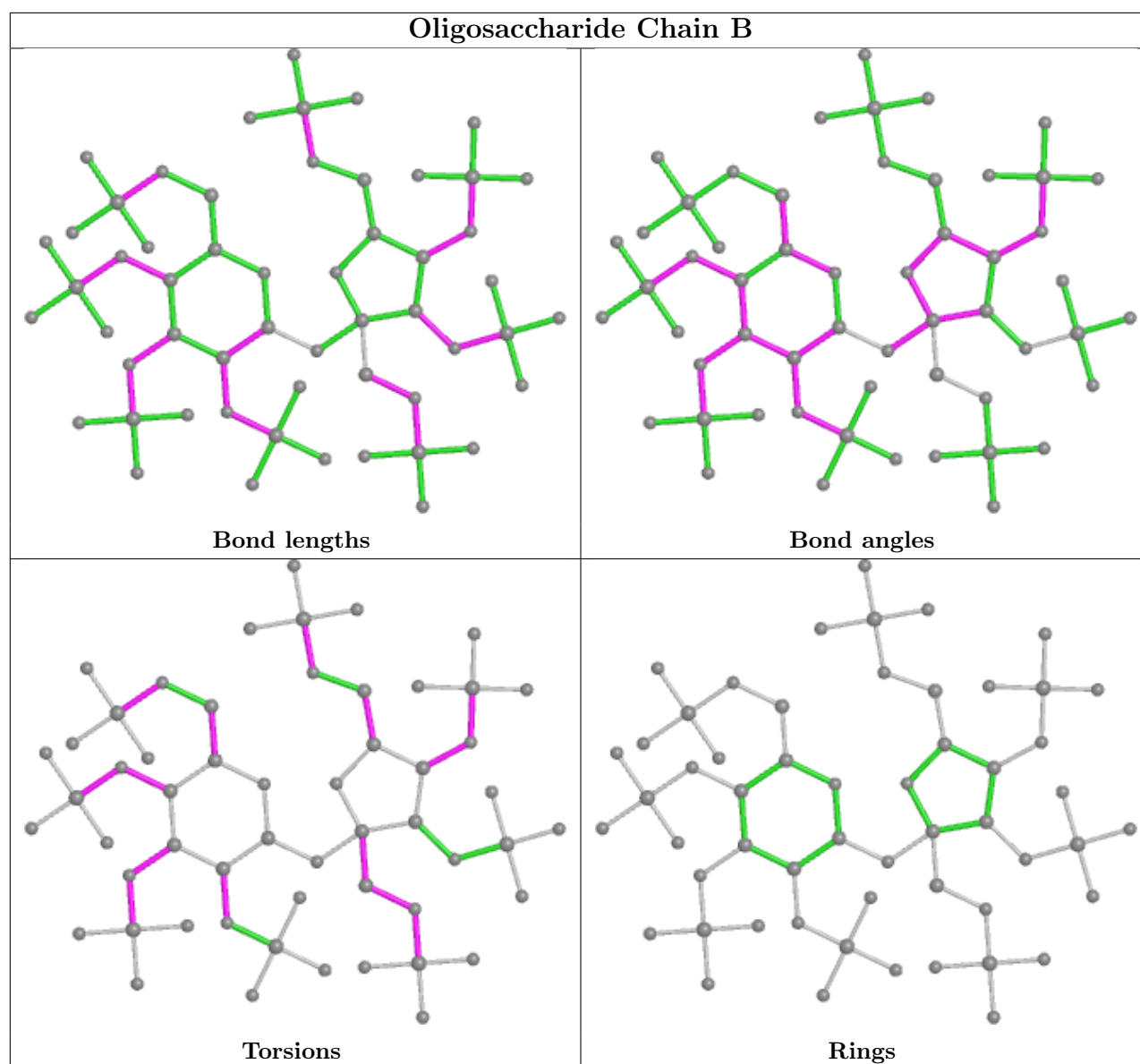
Mol	Chain	Res	Type	Atoms
2	B	1	GU4	C4-O4-S4-O25
2	B	1	GU4	C4-O4-S4-O26
2	B	1	GU4	C4-O4-S4-O24
2	B	1	GU4	C4-C3-O3-S3
2	B	1	GU4	C1-C2-O2-S2
2	B	1	GU4	C3-C2-O2-S2
2	B	2	YYJ	O1-C1-C2-C3
2	B	2	YYJ	O1-C1-C2-O2
2	B	2	YYJ	O1-C1-C2-O5
2	B	2	YYJ	C4-C5-C6-O6
2	B	2	YYJ	O5-C5-C6-O6
2	B	2	YYJ	C1-O1-S1-O1S1
2	B	2	YYJ	C1-O1-S1-O2S1
2	B	2	YYJ	C1-O1-S1-O3S1
2	B	2	YYJ	C4-O4-S4-O2S4
2	B	2	YYJ	C6-O6-S6-O2S6
2	B	1	GU4	C3-O3-S3-O28
2	B	1	GU4	C3-O3-S3-O27
2	B	2	YYJ	C4-O4-S4-O3S4
2	B	2	YYJ	C6-O6-S6-O3S6
2	B	2	YYJ	C3-C4-O4-S4
2	B	1	GU4	C3-O3-S3-O29
2	B	2	YYJ	C4-O4-S4-O1S4
2	B	2	YYJ	C6-O6-S6-O1S6
2	B	2	YYJ	C2-C1-O1-S1

There are no ring outliers.

2 monomers are involved in 4 short contacts:

Mol	Chain	Res	Type	Clashes	Symm-Clashes
2	B	1	GU4	4	0
2	B	2	YYJ	1	0

The following is a two-dimensional graphical depiction of Mogul quality analysis of bond lengths, bond angles, torsion angles, and ring geometry for oligosaccharide.



5.6 Ligand geometry [i](#)

Of 2 ligands modelled in this entry, 2 are monoatomic - leaving 0 for Mogul analysis.

There are no bond length outliers.

There are no bond angle outliers.

There are no chirality outliers.

There are no torsion outliers.

There are no ring outliers.

No monomer is involved in short contacts.

5.7 Other polymers [i](#)

There are no such residues in this entry.

5.8 Polymer linkage issues [i](#)

There are no chain breaks in this entry.

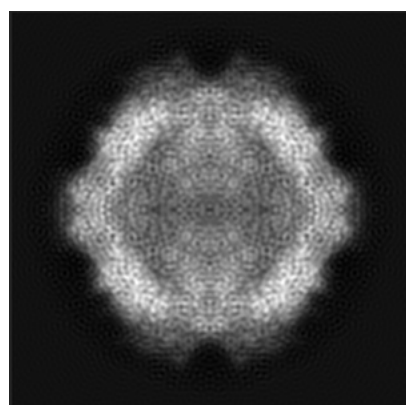
6 Map visualisation [i](#)

This section contains visualisations of the EMDB entry EMD-5681. These allow visual inspection of the internal detail of the map and identification of artifacts.

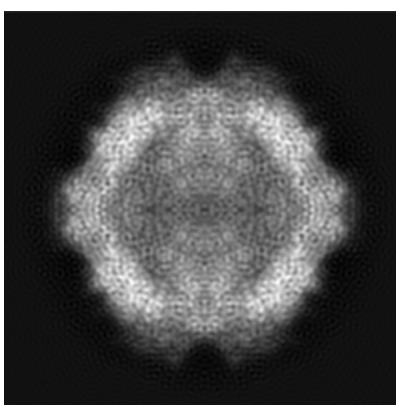
No raw map or half-maps were deposited for this entry and therefore no images, graphs, etc. pertaining to the raw map can be shown.

6.1 Orthogonal projections [i](#)

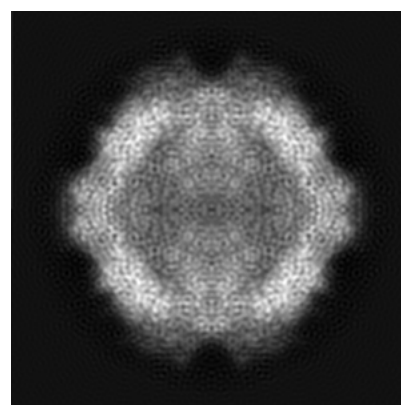
6.1.1 Primary map



X



Y

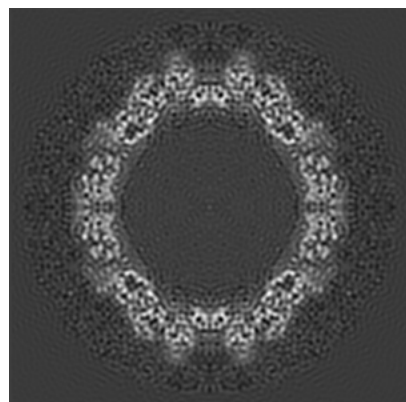


Z

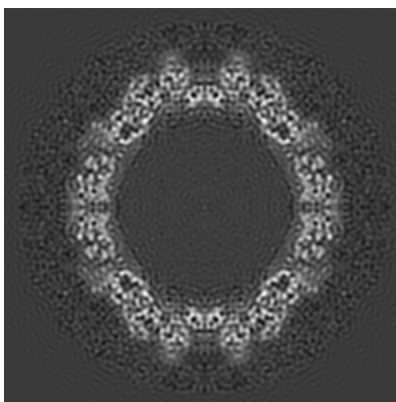
The images above show the map projected in three orthogonal directions.

6.2 Central slices [i](#)

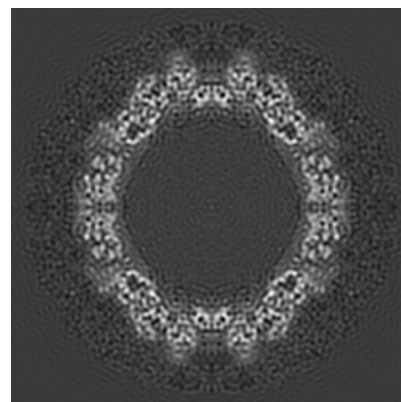
6.2.1 Primary map



X Index: 136



Y Index: 136

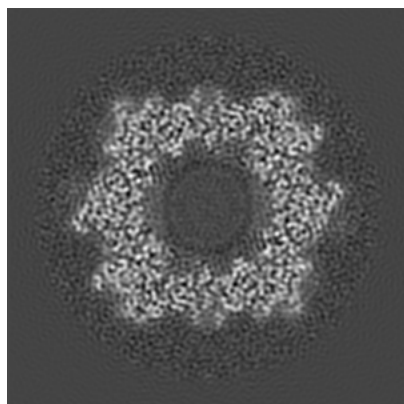


Z Index: 136

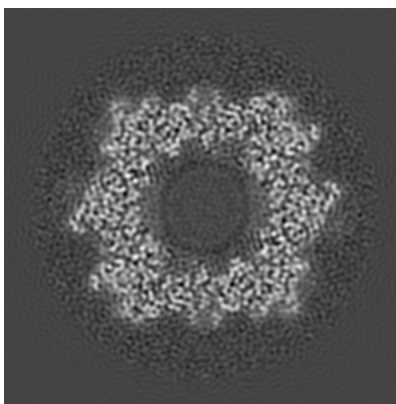
The images above show central slices of the map in three orthogonal directions.

6.3 Largest variance slices [i](#)

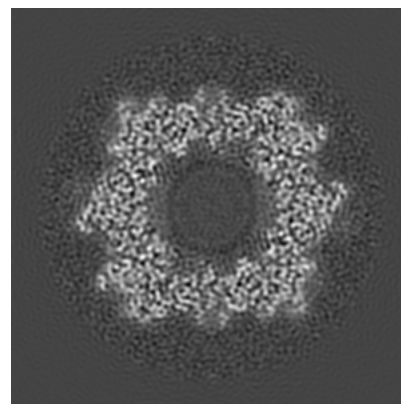
6.3.1 Primary map



X Index: 86



Y Index: 86

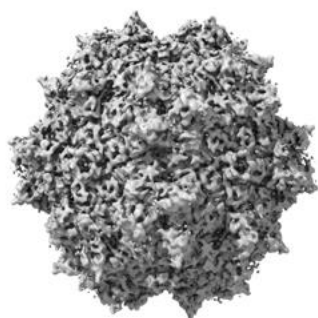


Z Index: 86

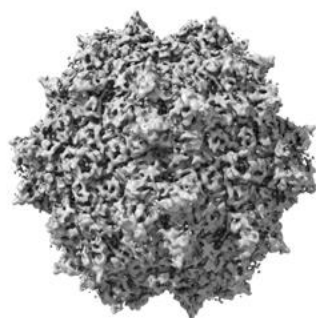
The images above show the largest variance slices of the map in three orthogonal directions.

6.4 Orthogonal surface views [i](#)

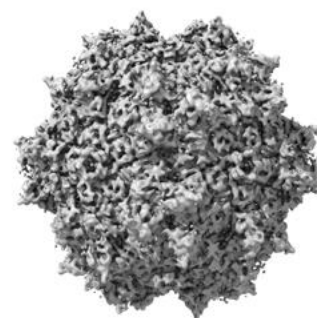
6.4.1 Primary map



X



Y



Z

The images above show the 3D surface view of the map at the recommended contour level 3.0. These images, in conjunction with the slice images, may facilitate assessment of whether an appropriate contour level has been provided.

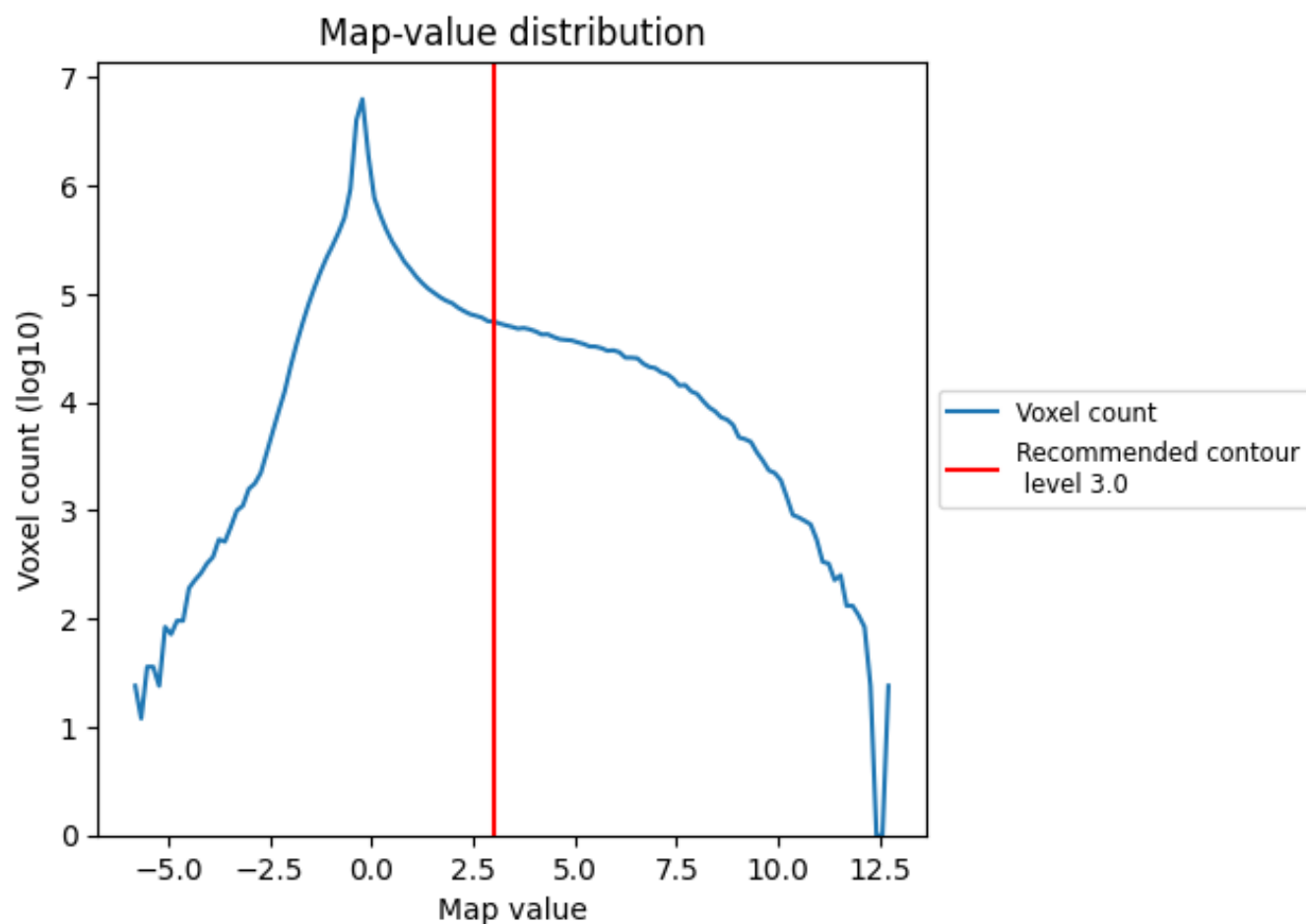
6.5 Mask visualisation

This section was not generated. No masks/segmentation were deposited.

7 Map analysis [i](#)

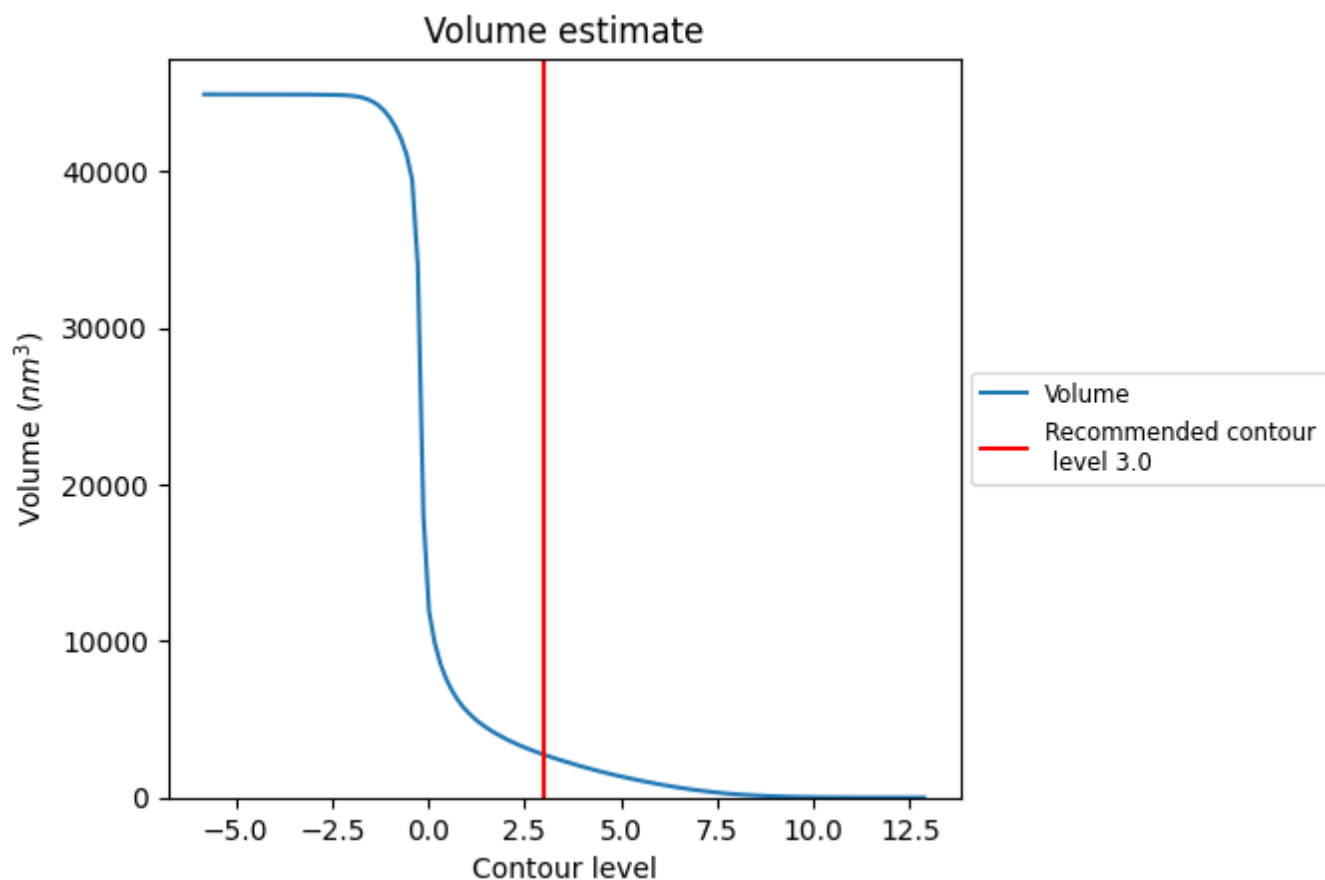
This section contains the results of statistical analysis of the map.

7.1 Map-value distribution [i](#)



The map-value distribution is plotted in 128 intervals along the x-axis. The y-axis is logarithmic. A spike in this graph at zero usually indicates that the volume has been masked.

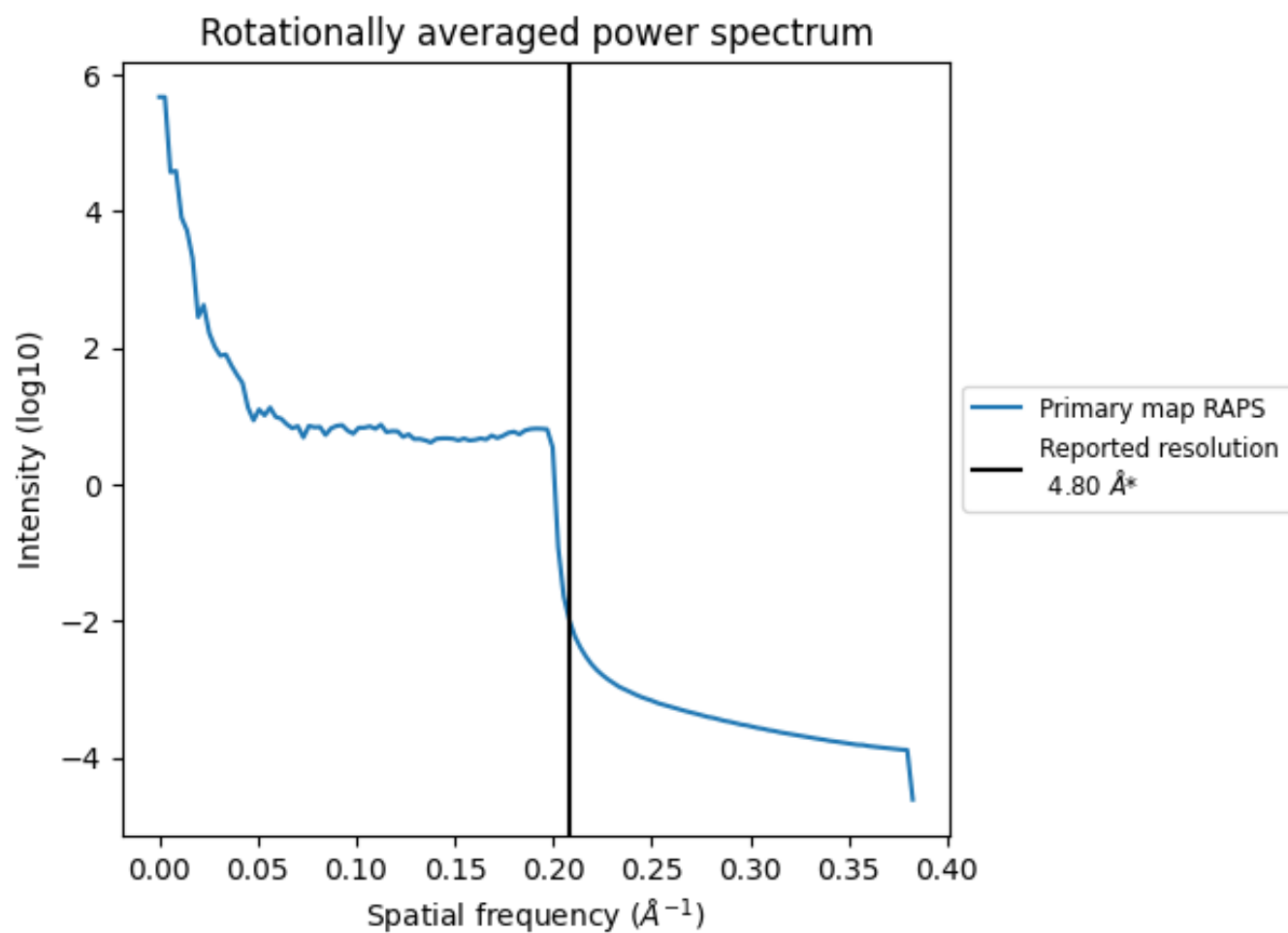
7.2 Volume estimate [i](#)



The volume at the recommended contour level is 2741 nm³; this corresponds to an approximate mass of 2476 kDa.

The volume estimate graph shows how the enclosed volume varies with the contour level. The recommended contour level is shown as a vertical line and the intersection between the line and the curve gives the volume of the enclosed surface at the given level.

7.3 Rotationally averaged power spectrum ⓘ



*Reported resolution corresponds to spatial frequency of 0.208 Å⁻¹

8 Fourier-Shell correlation ⓘ

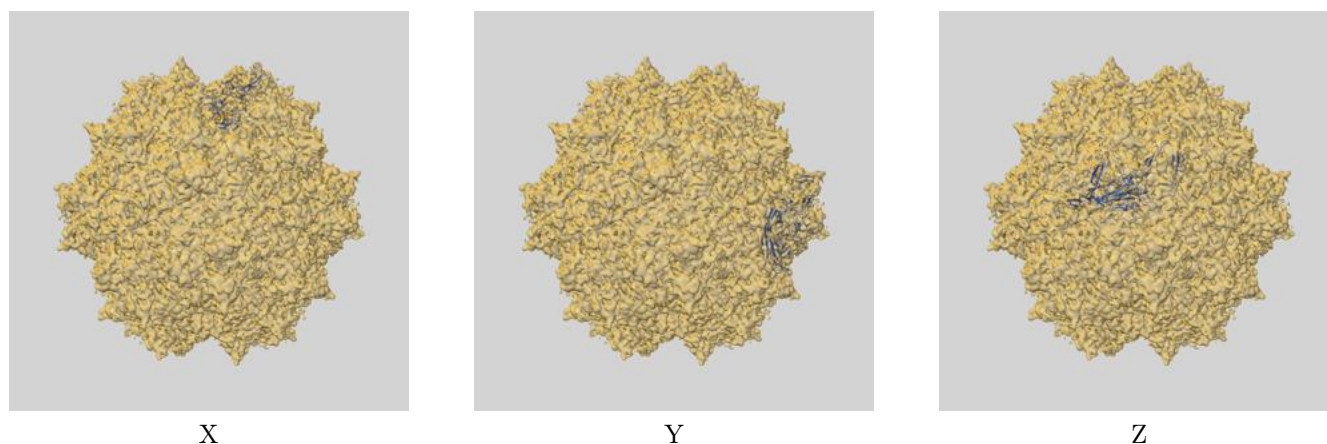
This section was not generated. No FSC curve or half-maps provided.

9 Map-model fit [i](#)

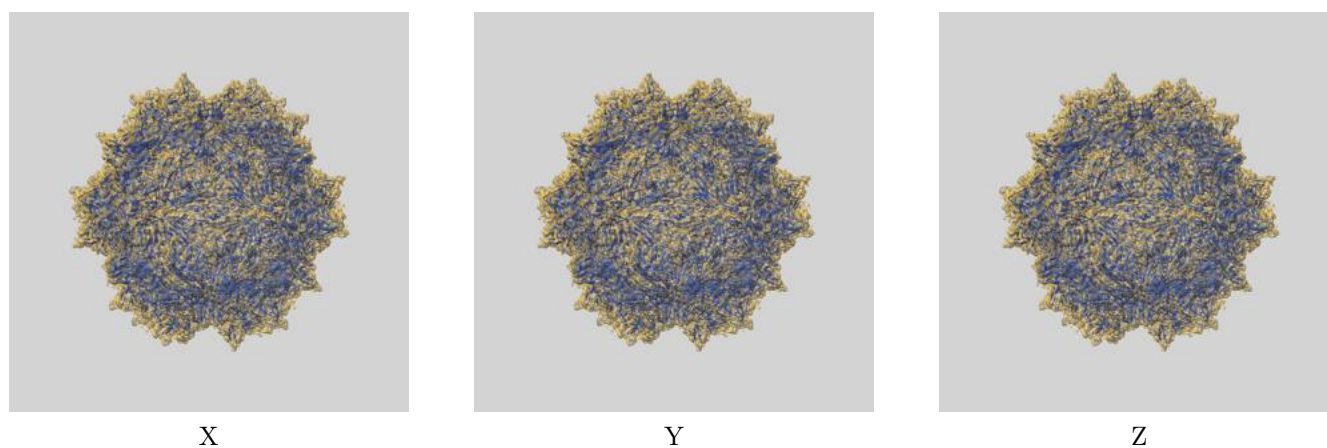
This section contains information regarding the fit between EMDB map EMD-5681 and PDB model 3J4P. Per-residue inclusion information can be found in section 3 on page 4.

9.1 Map-model overlays

9.1.1 Map-model overlay [i](#)



9.1.2 Map-model assembly overlay [i](#)



The images above show the 3D surface view of the map at the recommended contour level 3.0 at 50% transparency in yellow overlaid with a ribbon representation of the model coloured in blue. These images allow for the visual assessment of the quality of fit between the atomic model and the map.

9.2 Q-score mapped to coordinate model [i](#)



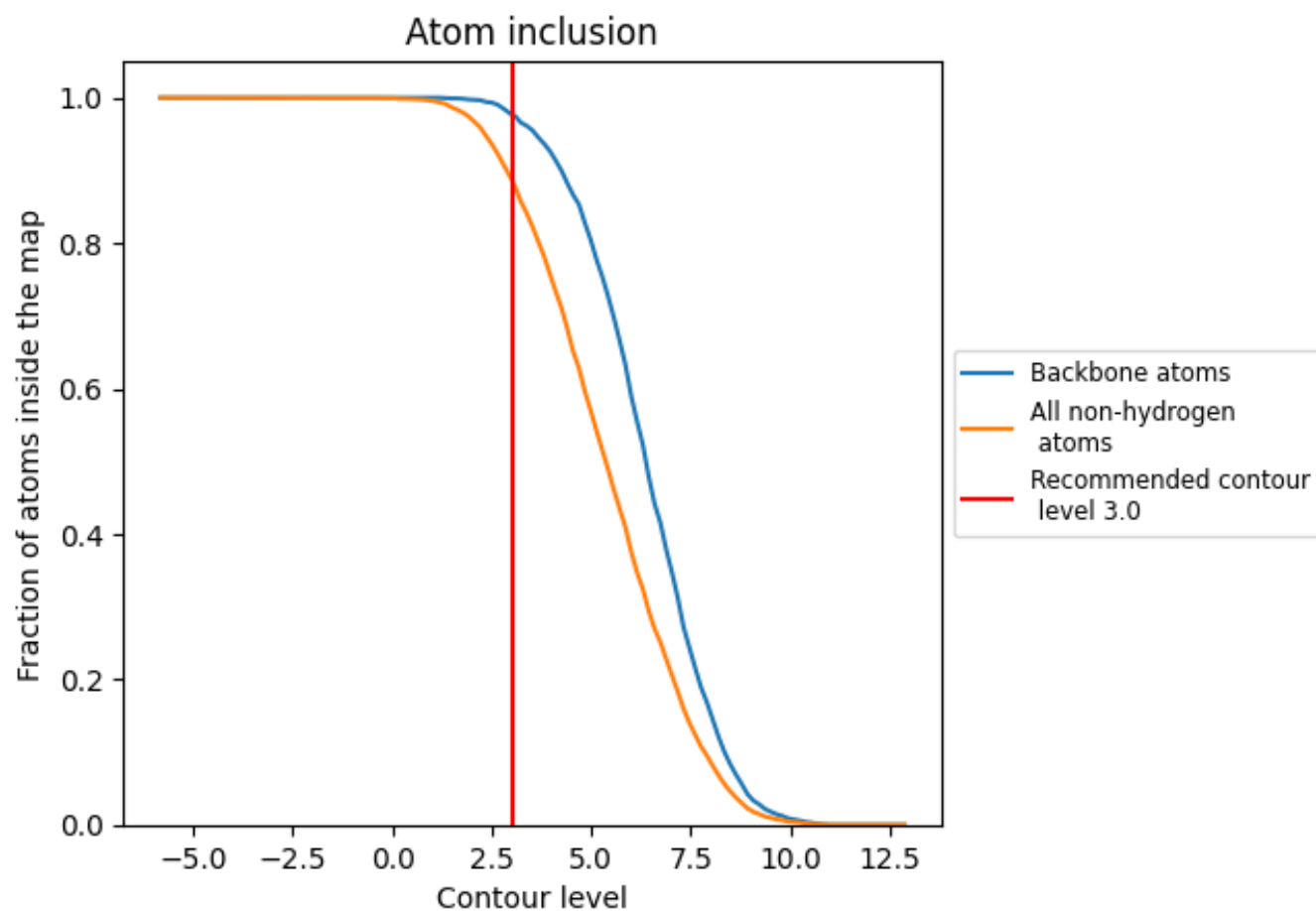
The images above show the model with each residue coloured according to its Q-score. This shows their resolvability in the map with higher Q-score values reflecting better resolvability. Please note: Q-score is calculating the resolvability of atoms, and thus high values are only expected at resolutions at which atoms can be resolved. Low Q-score values may therefore be expected for many entries.

9.3 Atom inclusion mapped to coordinate model [i](#)



The images above show the model with each residue coloured according to its atom inclusion. This shows to what extent they are inside the map at the recommended contour level (3.0).

9.4 Atom inclusion [i](#)



At the recommended contour level, 98% of all backbone atoms, 89% of all non-hydrogen atoms, are inside the map.

9.5 Map-model fit summary ⓘ

The table lists the average atom inclusion at the recommended contour level (3.0) and Q-score for the entire model and for each chain.

Chain	Atom inclusion	Q-score
All	<div></div> 0.8876	<div></div> 0.3320
A	<div></div> 0.8969	<div></div> 0.3330
B	<div></div> 0.2000	<div></div> 0.2590

