



# wwPDB X-ray Structure Validation Summary Report ⓘ

Aug 8, 2020 – 07:29 AM BST

PDB ID : 5J4X  
Title : Structure of tetrameric jacalin complexed with Gal beta-(1,3) Gal-beta-OMe  
Authors : Abhinav, K.V.; Sharma, K.; Surolia, A.; Vijayan, M.  
Deposited on : 2016-04-01  
Resolution : 1.65 Å(reported)

This is a wwPDB X-ray Structure Validation Summary Report for a publicly released PDB entry.

We welcome your comments at [validation@mail.wwpdb.org](mailto:validation@mail.wwpdb.org)

A user guide is available at

<https://www.wwpdb.org/validation/2017/XrayValidationReportHelp>

with specific help available everywhere you see the ⓘ symbol.

---

The following versions of software and data (see [references ⓘ](#)) were used in the production of this report:

MolProbity : 4.02b-467  
Mogul : 1.8.5 (274361), CSD as541be (2020)  
Xtriage (Phenix) : 1.13  
EDS : 2.13.1  
Percentile statistics : 20191225.v01 (using entries in the PDB archive December 25th 2019)  
Refmac : 5.8.0158  
CCP4 : 7.0.044 (Gargrove)  
Ideal geometry (proteins) : Engh & Huber (2001)  
Ideal geometry (DNA, RNA) : Parkinson et al. (1996)  
Validation Pipeline (wwPDB-VP) : 2.13.1

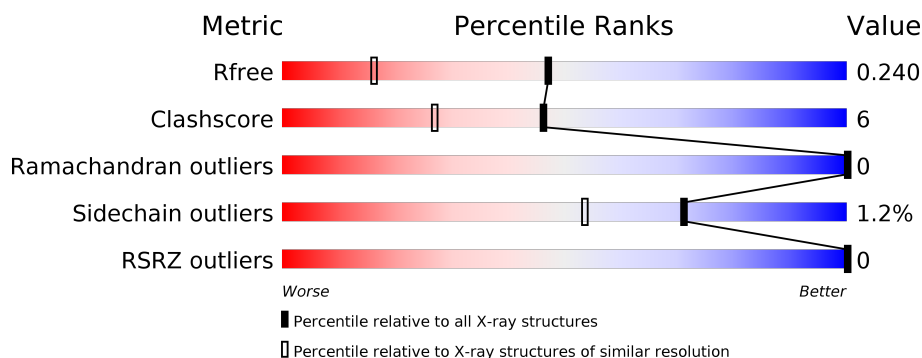
# 1 Overall quality at a glance ⓘ

The following experimental techniques were used to determine the structure:

*X-RAY DIFFRACTION*

The reported resolution of this entry is 1.65 Å.

Percentile scores (ranging between 0-100) for global validation metrics of the entry are shown in the following graphic. The table shows the number of entries on which the scores are based.



Metric	Whole archive (#Entries)	Similar resolution (#Entries, resolution range(Å))
$R_{free}$	130704	1827 (1.66-1.66)
Clashscore	141614	1931 (1.66-1.66)
Ramachandran outliers	138981	1891 (1.66-1.66)
Sidechain outliers	138945	1891 (1.66-1.66)
RSRZ outliers	127900	1791 (1.66-1.66)

The table below summarises the geometric issues observed across the polymeric chains and their fit to the electron density. The red, orange, yellow and green segments on the lower bar indicate the fraction of residues that contain outliers for  $\geq 3$ , 2, 1 and 0 types of geometric quality criteria respectively. A grey segment represents the fraction of residues that are not modelled. The numeric value for each fraction is indicated below the corresponding segment, with a dot representing fractions  $\leq 5\%$ . The upper red bar (where present) indicates the fraction of residues that have poor fit to the electron density. The numeric value is given above the bar.

Mol	Chain	Length	Quality of chain
1	A	133	<div> <div style="width: 84%;"></div> <div style="width: 14%;"></div> <div style="width: 2%;"></div> </div> <div>84% 14% .</div>
1	C	133	<div> <div style="width: 91%;"></div> <div style="width: 8%;"></div> <div style="width: 1%;"></div> </div> <div>91% 8% .</div>
1	E	133	<div> <div style="width: 92%;"></div> <div style="width: 8%;"></div> <div style="width: 1%;"></div> </div> <div>92% 8% .</div>
1	G	133	<div> <div style="width: 90%;"></div> <div style="width: 10%;"></div> </div> <div>90% 10%</div>
2	B	19	<div> <div style="width: 79%;"></div> <div style="width: 5%;"></div> <div style="width: 16%;"></div> </div> <div>79% 5% 16%</div>
2	D	19	<div> <div style="width: 74%;"></div> <div style="width: 5%;"></div> <div style="width: 21%;"></div> </div> <div>74% 5% 21%</div>

*Continued on next page...*

*Continued from previous page...*

Mol	Chain	Length	Quality of chain
2	F	19	
2	H	19	
3	I	2	

The following table lists non-polymeric compounds, carbohydrate monomers and non-standard residues in protein, DNA, RNA chains that are outliers for geometric or electron-density-fit criteria:

Mol	Type	Chain	Res	Chirality	Geometry	Clashes	Electron density
4	EDO	A	202	-	-	X	-

## 2 Entry composition [i](#)

There are 6 unique types of molecules in this entry. The entry contains 5232 atoms, of which 0 are hydrogens and 0 are deuteriums.

In the tables below, the ZeroOcc column contains the number of atoms modelled with zero occupancy, the AltConf column contains the number of residues with at least one atom in alternate conformation and the Trace column contains the number of residues modelled with at most 2 atoms.

- Molecule 1 is a protein called Agglutinin alpha chain.

Mol	Chain	Residues	Atoms					ZeroOcc	AltConf	Trace
1	A	133	Total	C	N	O	S	0	0	0
			1040	679	160	199	2			
1	C	133	Total	C	N	O	S	0	0	0
			1037	677	160	198	2			
1	E	133	Total	C	N	O	S	0	0	0
			1032	674	158	198	2			
1	G	133	Total	C	N	O	S	0	1	0
			1046	682	161	201	2			

- Molecule 2 is a protein called Agglutinin beta-3 chain.

Mol	Chain	Residues	Atoms				ZeroOcc	AltConf	Trace
2	B	16	Total	C	N	O	0	0	0
			110	70	19	21			
2	D	15	Total	C	N	O	0	1	0
			114	72	20	22			
2	F	16	Total	C	N	O	0	0	0
			110	71	19	20			
2	H	15	Total	C	N	O	0	0	0
			100	65	17	18			

- Molecule 3 is an oligosaccharide called beta-D-galactopyranose-(1-3)-methyl beta-D-galactopyranoside.



Mol	Chain	Residues	Atoms			ZeroOcc	AltConf	Trace
3	I	2	Total	C	O	0	0	0
			24	13	11			

- Molecule 4 is 1,2-ETHANEDIOL (three-letter code: EDO) (formula: C<sub>2</sub>H<sub>6</sub>O<sub>2</sub>).



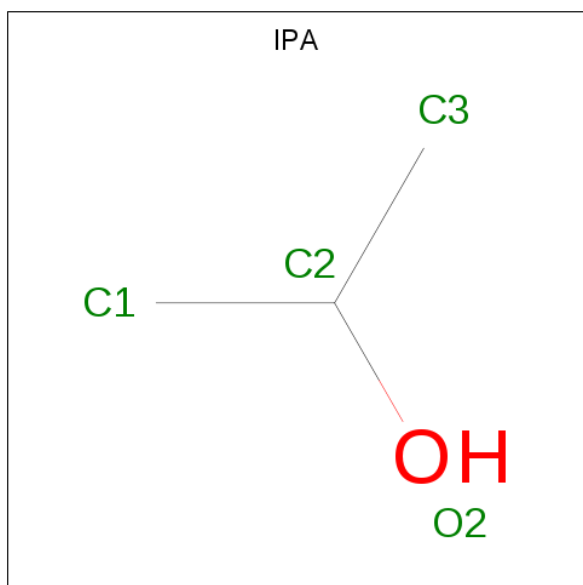
Mol	Chain	Residues	Atoms			ZeroOcc	AltConf
4	A	1	Total	C	O	0	0
			4	2	2		
4	A	1	Total	C	O	0	0
			4	2	2		
4	A	1	Total	C	O	0	0
			4	2	2		
4	C	1	Total	C	O	0	0
			4	2	2		
4	C	1	Total	C	O	0	0
			4	2	2		
4	C	1	Total	C	O	0	0
			4	2	2		
4	C	1	Total	C	O	0	0
			4	2	2		
4	D	1	Total	C	O	0	0
			4	2	2		
4	E	1	Total	C	O	0	0
			4	2	2		
4	E	1	Total	C	O	0	0
			4	2	2		
4	F	1	Total	C	O	0	0
			4	2	2		
4	G	1	Total	C	O	0	0
			4	2	2		
4	G	1	Total	C	O	0	0
			4	2	2		

*Continued on next page...*

*Continued from previous page...*

Mol	Chain	Residues	Atoms			ZeroOcc	AltConf
4	G	1	Total	C	O	0	0
			4	2	2		
4	H	1	Total	C	O	0	0
			4	2	2		

- Molecule 5 is ISOPROPYL ALCOHOL (three-letter code: IPA) (formula: C<sub>3</sub>H<sub>8</sub>O).



Mol	Chain	Residues	Atoms			ZeroOcc	AltConf
5	A	1	Total	C	O	0	0
			4	3	1		

- Molecule 6 is water.

Mol	Chain	Residues	Atoms		ZeroOcc	AltConf
6	A	118	Total	O	0	0
			118	118		
6	B	18	Total	O	0	0
			18	18		
6	C	134	Total	O	0	0
			134	134		
6	D	10	Total	O	0	0
			10	10		
6	E	115	Total	O	0	0
			115	115		
6	F	10	Total	O	0	0
			10	10		

*Continued on next page...*


*Continued from previous page...*

Mol	Chain	Residues	Atoms		ZeroOcc	AltConf
6	G	137	Total 137	O 137	0	0
6	H	13	Total 13	O 13	0	0

### 3 Residue-property plots [i](#)

These plots are drawn for all protein, RNA, DNA and oligosaccharide chains in the entry. The first graphic for a chain summarises the proportions of the various outlier classes displayed in the second graphic. The second graphic shows the sequence view annotated by issues in geometry and electron density. Residues are color-coded according to the number of geometric quality criteria for which they contain at least one outlier: green = 0, yellow = 1, orange = 2 and red = 3 or more. A red dot above a residue indicates a poor fit to the electron density ( $RSRZ > 2$ ). Stretches of 2 or more consecutive residues without any outlier are shown as a green connector. Residues present in the sample, but not in the model, are shown in grey.

- Molecule 1: Agglutinin alpha chain

Chain A:  84% 14% .



- Molecule 1: Agglutinin alpha chain

Chain C:  91% 8% .




- Molecule 1: Agglutinin alpha chain

Chain E:  92% 8% .




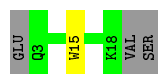
- Molecule 1: Agglutinin alpha chain

Chain G:  90% 10% .



- Molecule 2: Agglutinin beta-3 chain

Chain B:  79% 5% 16%



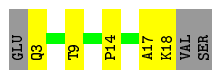
- Molecule 2: Agglutinin beta-3 chain

Chain D:  74% 5% 21%





- Molecule 2: Agglutinin beta-3 chain



- Molecule 2: Agglutinin beta-3 chain



- Molecule 3: beta-D-galactopyranose-(1-3)-methyl beta-D-galactopyranoside



## 4 Data and refinement statistics

Property	Value	Source
Space group	P 1 21 1	Depositor
Cell constants a, b, c, $\alpha$ , $\beta$ , $\gamma$	58.63Å 82.18Å 63.06Å 90.00° 107.42° 90.00°	Depositor
Resolution (Å)	35.71 – 1.65 33.93 – 1.64	Depositor EDS
% Data completeness (in resolution range)	96.4 (35.71-1.65) 96.4 (33.93-1.64)	Depositor EDS
$R_{merge}$	(Not available)	Depositor
$R_{sym}$	0.22	Depositor
$\langle I/\sigma(I) \rangle$ <sup>1</sup>	1.49 (at 1.64Å)	Xtriage
Refinement program	REFMAC 5.6.0117	Depositor
R, $R_{free}$	0.194 , 0.240 0.194 , 0.240	Depositor DCC
$R_{free}$ test set	3396 reflections (5.09%)	wwPDB-VP
Wilson B-factor (Å <sup>2</sup> )	10.5	Xtriage
Anisotropy	0.375	Xtriage
Bulk solvent $k_{sol}$ (e/Å <sup>3</sup> ), $B_{sol}$ (Å <sup>2</sup> )	0.38 , 24.1	EDS
L-test for twinning <sup>2</sup>	$\langle  L  \rangle = 0.39$ , $\langle L^2 \rangle = 0.22$	Xtriage
Estimated twinning fraction	No twinning to report.	Xtriage
$F_o, F_c$ correlation	0.94	EDS
Total number of atoms	5232	wwPDB-VP
Average B, all atoms (Å <sup>2</sup> )	14.0	wwPDB-VP

Xtriage's analysis on translational NCS is as follows: *The largest off-origin peak in the Patterson function is 6.76% of the height of the origin peak. No significant pseudotranslation is detected.*

<sup>1</sup>Intensities estimated from amplitudes.

<sup>2</sup>Theoretical values of  $\langle |L| \rangle$ ,  $\langle L^2 \rangle$  for acentric reflections are 0.5, 0.333 respectively for untwinned datasets, and 0.375, 0.2 for perfectly twinned datasets.

## 5 Model quality ⓘ

### 5.1 Standard geometry ⓘ

Bond lengths and bond angles in the following residue types are not validated in this section: GAL, IPA, MBG, EDO

The Z score for a bond length (or angle) is the number of standard deviations the observed value is removed from the expected value. A bond length (or angle) with  $|Z| > 5$  is considered an outlier worth inspection. RMSZ is the root-mean-square of all Z scores of the bond lengths (or angles).

Mol	Chain	Bond lengths		Bond angles	
		RMSZ	$\# Z  > 5$	RMSZ	$\# Z  > 5$
1	A	1.08	1/1069 (0.1%)	0.96	2/1449 (0.1%)
1	C	1.07	1/1066 (0.1%)	1.01	0/1445
1	E	1.07	2/1061 (0.2%)	0.98	0/1440
1	G	1.11	0/1075	1.00	1/1457 (0.1%)
2	B	1.24	1/112 (0.9%)	0.93	0/153
2	D	1.21	0/116	1.03	0/158
2	F	1.14	0/112	0.93	0/152
2	H	1.14	0/102	0.85	0/140
All	All	1.09	5/4713 (0.1%)	0.98	3/6394 (0.0%)

Chiral center outliers are detected by calculating the chiral volume of a chiral center and verifying if the center is modelled as a planar moiety or with the opposite hand. A planarity outlier is detected by checking planarity of atoms in a peptide group, atoms in a mainchain group or atoms of a sidechain that are expected to be planar.

Mol	Chain	#Chirality outliers	#Planarity outliers
2	F	0	1

All (5) bond length outliers are listed below:

Mol	Chain	Res	Type	Atoms	Z	Observed(Å)	Ideal(Å)
2	B	15	TRP	CD2-CE2	7.26	1.50	1.41
1	C	123	TRP	CD2-CE2	5.65	1.48	1.41
1	A	123	TRP	CD2-CE2	5.36	1.47	1.41
1	E	44	HIS	CG-CD2	5.33	1.44	1.35
1	E	83	SER	CB-OG	-5.12	1.35	1.42

All (3) bond angle outliers are listed below:

Mol	Chain	Res	Type	Atoms	Z	Observed(°)	Ideal(°)
1	A	54	VAL	CB-CA-C	-5.53	100.89	111.40
1	G	27	ASP	CB-CG-OD1	5.36	123.12	118.30
1	A	45	LYS	CD-CE-NZ	-5.21	99.70	111.70

There are no chirality outliers.

All (1) planarity outliers are listed below:

Mol	Chain	Res	Type	Group
2	F	17	ALA	Peptide

## 5.2 Too-close contacts [i](#)

In the following table, the Non-H and H(model) columns list the number of non-hydrogen atoms and hydrogen atoms in the chain respectively. The H(added) column lists the number of hydrogen atoms added and optimized by MolProbity. The Clashes column lists the number of clashes within the asymmetric unit, whereas Symm-Clashes lists symmetry related clashes.

Mol	Chain	Non-H	H(model)	H(added)	Clashes	Symm-Clashes
1	A	1040	0	1009	25	0
1	C	1037	0	999	8	0
1	E	1032	0	992	7	0
1	G	1046	0	1013	7	0
2	B	110	0	105	0	0
2	D	114	0	110	1	0
2	F	110	0	110	4	0
2	H	100	0	94	3	0
3	I	24	0	23	6	0
4	A	12	0	18	10	0
4	C	16	0	24	2	0
4	D	4	0	6	0	0
4	E	8	0	12	2	0
4	F	4	0	6	2	0
4	G	12	0	18	2	0
4	H	4	0	6	2	0
5	A	4	0	8	2	0
6	A	118	0	0	4	0
6	B	18	0	0	0	0
6	C	134	0	0	1	0
6	D	10	0	0	1	0
6	E	115	0	0	3	0
6	F	10	0	0	2	0
6	G	137	0	0	0	0

*Continued on next page...*

*Continued from previous page...*

Mol	Chain	Non-H	H(model)	H(added)	Clashes	Symm-Clashes
6	H	13	0	0	1	0
All	All	5232	0	4553	58	0

The all-atom clashscore is defined as the number of clashes found per 1000 atoms (including hydrogen atoms). The all-atom clashscore for this structure is 6.

The worst 5 of 58 close contacts within the same asymmetric unit are listed below, sorted by their clash magnitude.

Atom-1	Atom-2	Interatomic distance (Å)	Clash overlap (Å)
1:A:35:ASN:HB3	4:A:201:EDO:H11	1.53	0.90
2:H:8:GLN:HG3	6:H:213:HOH:O	1.76	0.83
1:A:21:LYS:HG2	4:A:202:EDO:H22	1.62	0.81
1:A:21:LYS:HE2	4:A:202:EDO:C2	2.15	0.76
1:A:90:LYS:HE3	6:A:372:HOH:O	1.87	0.73

There are no symmetry-related clashes.

## 5.3 Torsion angles [i](#)

### 5.3.1 Protein backbone [i](#)

In the following table, the Percentiles column shows the percent Ramachandran outliers of the chain as a percentile score with respect to all X-ray entries followed by that with respect to entries of similar resolution.

The Analysed column shows the number of residues for which the backbone conformation was analysed, and the total number of residues.

Mol	Chain	Analysed	Favoured	Allowed	Outliers	Percentiles	
1	A	131/133 (98%)	126 (96%)	5 (4%)	0	100	100
1	C	131/133 (98%)	124 (95%)	7 (5%)	0	100	100
1	E	131/133 (98%)	126 (96%)	5 (4%)	0	100	100
1	G	132/133 (99%)	127 (96%)	5 (4%)	0	100	100
2	B	14/19 (74%)	14 (100%)	0	0	100	100
2	D	14/19 (74%)	14 (100%)	0	0	100	100
2	F	14/19 (74%)	14 (100%)	0	0	100	100
2	H	13/19 (68%)	13 (100%)	0	0	100	100
All	All	580/608 (95%)	558 (96%)	22 (4%)	0	100	100

There are no Ramachandran outliers to report.

### 5.3.2 Protein sidechains ⓘ

In the following table, the Percentiles column shows the percent sidechain outliers of the chain as a percentile score with respect to all X-ray entries followed by that with respect to entries of similar resolution.

The Analysed column shows the number of residues for which the sidechain conformation was analysed, and the total number of residues.

Mol	Chain	Analysed	Rotameric	Outliers	Percentiles	
1	A	113/113 (100%)	110 (97%)	3 (3%)	44	19
1	C	111/113 (98%)	110 (99%)	1 (1%)	78	66
1	E	111/113 (98%)	111 (100%)	0	100	100
1	G	114/113 (101%)	113 (99%)	1 (1%)	78	66
2	B	11/15 (73%)	11 (100%)	0	100	100
2	D	12/15 (80%)	12 (100%)	0	100	100
2	F	11/15 (73%)	10 (91%)	1 (9%)	9	1
2	H	9/15 (60%)	9 (100%)	0	100	100
All	All	492/512 (96%)	486 (99%)	6 (1%)	71	53

5 of 6 residues with a non-rotameric sidechain are listed below:

Mol	Chain	Res	Type
1	A	117	LYS
1	G	107	PRO
1	C	54	VAL
1	A	107	PRO
2	F	18	LYS

Some sidechains can be flipped to improve hydrogen bonding and reduce clashes. There are no such sidechains identified.

### 5.3.3 RNA ⓘ

There are no RNA molecules in this entry.

## 5.4 Non-standard residues in protein, DNA, RNA chains ⓘ

There are no non-standard protein/DNA/RNA residues in this entry.

## 5.5 Carbohydrates ⓘ

2 monosaccharides are modelled in this entry.

In the following table, the Counts columns list the number of bonds (or angles) for which Mogul statistics could be retrieved, the number of bonds (or angles) that are observed in the model and the number of bonds (or angles) that are defined in the Chemical Component Dictionary. The Link column lists molecule types, if any, to which the group is linked. The Z score for a bond length (or angle) is the number of standard deviations the observed value is removed from the expected value. A bond length (or angle) with  $|Z| > 2$  is considered an outlier worth inspection. RMSZ is the root-mean-square of all Z scores of the bond lengths (or angles).

Mol	Type	Chain	Res	Link	Bond lengths			Bond angles		
					Counts	RMSZ	# $ Z  > 2$	Counts	RMSZ	# $ Z  > 2$
3	MBG	I	1	3	13,13,13	2.30	4 (30%)	18,18,18	2.24	7 (38%)
3	GAL	I	2	3	11,11,12	2.27	4 (36%)	15,15,17	1.64	3 (20%)

In the following table, the Chirals column lists the number of chiral outliers, the number of chiral centers analysed, the number of these observed in the model and the number defined in the Chemical Component Dictionary. Similar counts are reported in the Torsion and Rings columns. '-' means no outliers of that kind were identified.

Mol	Type	Chain	Res	Link	Chirals	Torsions	Rings
3	MBG	I	1	3	-	2/4/24/24	0/1/1/1
3	GAL	I	2	3	-	2/2/19/22	0/1/1/1

The worst 5 of 8 bond length outliers are listed below:

Mol	Chain	Res	Type	Atoms	Z	Observed(Å)	Ideal(Å)
3	I	1	MBG	O1-C1	5.63	1.49	1.40
3	I	2	GAL	O4-C4	4.46	1.53	1.43
3	I	2	GAL	C4-C5	3.09	1.59	1.53
3	I	1	MBG	C4-C3	3.03	1.60	1.52
3	I	2	GAL	C2-C3	2.93	1.56	1.52

The worst 5 of 10 bond angle outliers are listed below:

Mol	Chain	Res	Type	Atoms	Z	Observed(°)	Ideal(°)
3	I	1	MBG	O5-C1-O1	4.85	122.21	110.97

*Continued on next page...*

*Continued from previous page...*

Mol	Chain	Res	Type	Atoms	Z	Observed(°)	Ideal(°)
3	I	2	GAL	C2-C3-C4	-4.13	103.75	110.89
3	I	1	MBG	C1-O5-C5	-3.81	106.21	113.69
3	I	1	MBG	O4-C4-C3	-3.11	103.15	110.35
3	I	1	MBG	O4-C4-C5	2.76	116.14	109.30

There are no chirality outliers.

All (4) torsion outliers are listed below:

Mol	Chain	Res	Type	Atoms
3	I	2	GAL	O5-C5-C6-O6
3	I	2	GAL	C4-C5-C6-O6
3	I	1	MBG	C2-C1-O1-C7
3	I	1	MBG	O5-C1-O1-C7

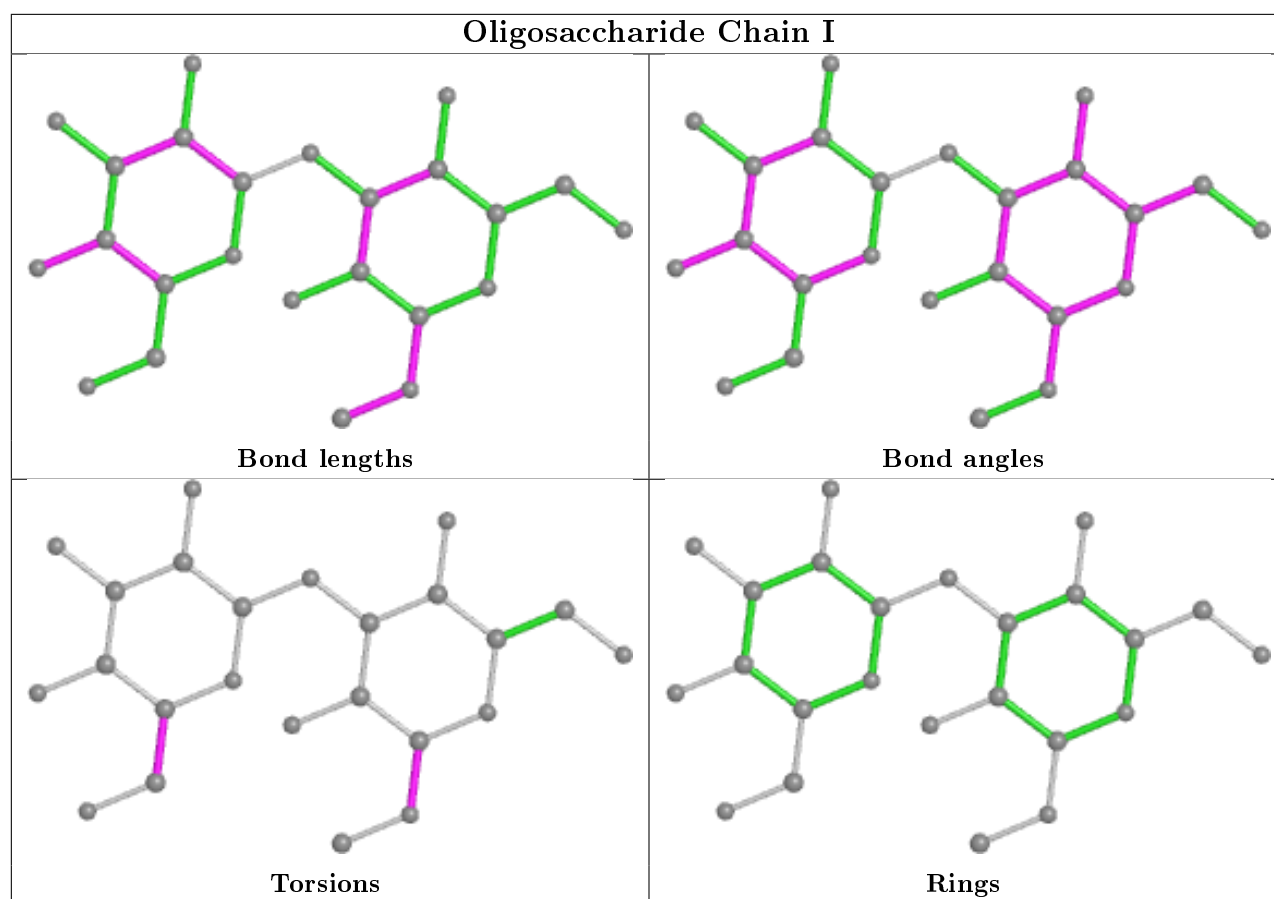
There are no ring outliers.

2 monomers are involved in 6 short contacts:

Mol	Chain	Res	Type	Clashes	Symm-Clashes
3	I	1	MBG	5	0
3	I	2	GAL	1	0

The following is a two-dimensional graphical depiction of Mogul quality analysis of bond lengths, bond angles, torsion angles, and ring geometry for oligosaccharide.





## 5.6 Ligand geometry [i](#)

16 ligands are modelled in this entry.

In the following table, the Counts columns list the number of bonds (or angles) for which Mogul statistics could be retrieved, the number of bonds (or angles) that are observed in the model and the number of bonds (or angles) that are defined in the Chemical Component Dictionary. The Link column lists molecule types, if any, to which the group is linked. The Z score for a bond length (or angle) is the number of standard deviations the observed value is removed from the expected value. A bond length (or angle) with  $|Z| > 2$  is considered an outlier worth inspection. RMSZ is the root-mean-square of all Z scores of the bond lengths (or angles).

Mol	Type	Chain	Res	Link	Bond lengths			Bond angles		
					Counts	RMSZ	$\# Z  > 2$	Counts	RMSZ	$\# Z  > 2$
5	IPA	A	204	-	3,3,3	0.51	0	3,3,3	0.76	0
4	EDO	H	101	-	3,3,3	0.40	0	2,2,2	0.66	0
4	EDO	G	203	-	3,3,3	0.37	0	2,2,2	0.80	0
4	EDO	F	101	-	3,3,3	0.34	0	2,2,2	1.17	0
4	EDO	D	101	-	3,3,3	0.39	0	2,2,2	0.60	0
4	EDO	C	203	-	3,3,3	0.28	0	2,2,2	0.94	0
4	EDO	E	202	-	3,3,3	0.65	0	2,2,2	0.54	0
4	EDO	A	203	-	3,3,3	0.41	0	2,2,2	1.69	1 (50%)

Mol	Type	Chain	Res	Link	Bond lengths			Bond angles		
					Counts	RMSZ	# Z  > 2	Counts	RMSZ	# Z  > 2
4	EDO	A	202	-	3,3,3	0.45	0	2,2,2	0.20	0
4	EDO	G	202	-	3,3,3	0.27	0	2,2,2	1.30	0
4	EDO	C	202	-	3,3,3	0.36	0	2,2,2	0.98	0
4	EDO	E	201	-	3,3,3	0.27	0	2,2,2	0.74	0
4	EDO	G	201	-	3,3,3	0.54	0	2,2,2	0.44	0
4	EDO	A	201	-	3,3,3	0.33	0	2,2,2	1.27	0
4	EDO	C	204	-	3,3,3	0.46	0	2,2,2	0.51	0
4	EDO	C	201	-	3,3,3	0.36	0	2,2,2	1.10	0

In the following table, the Chirals column lists the number of chiral outliers, the number of chiral centers analysed, the number of these observed in the model and the number defined in the Chemical Component Dictionary. Similar counts are reported in the Torsion and Rings columns. '-' means no outliers of that kind were identified.

Mol	Type	Chain	Res	Link	Chirals	Torsions	Rings
4	EDO	H	101	-	-	1/1/1/1	-
4	EDO	G	203	-	-	0/1/1/1	-
4	EDO	F	101	-	-	0/1/1/1	-
4	EDO	D	101	-	-	0/1/1/1	-
4	EDO	C	203	-	-	1/1/1/1	-
4	EDO	E	202	-	-	1/1/1/1	-
4	EDO	A	203	-	-	1/1/1/1	-
4	EDO	A	202	-	-	1/1/1/1	-
4	EDO	G	202	-	-	1/1/1/1	-
4	EDO	C	202	-	-	0/1/1/1	-
4	EDO	E	201	-	-	1/1/1/1	-
4	EDO	G	201	-	-	0/1/1/1	-
4	EDO	A	201	-	-	1/1/1/1	-
4	EDO	C	204	-	-	1/1/1/1	-
4	EDO	C	201	-	-	1/1/1/1	-

There are no bond length outliers.

All (1) bond angle outliers are listed below:

Mol	Chain	Res	Type	Atoms	Z	Observed(°)	Ideal(°)
4	A	203	EDO	O1-C1-C2	-2.09	96.86	111.91

There are no chirality outliers.

5 of 10 torsion outliers are listed below:

Mol	Chain	Res	Type	Atoms
4	H	101	EDO	O1-C1-C2-O2
4	A	203	EDO	O1-C1-C2-O2
4	A	202	EDO	O1-C1-C2-O2
4	E	201	EDO	O1-C1-C2-O2
4	G	202	EDO	O1-C1-C2-O2

There are no ring outliers.

11 monomers are involved in 22 short contacts:

Mol	Chain	Res	Type	Clashes	Symm-Clashes
5	A	204	IPA	2	0
4	H	101	EDO	2	0
4	F	101	EDO	2	0
4	E	202	EDO	1	0
4	A	203	EDO	2	0
4	A	202	EDO	6	0
4	G	202	EDO	2	0
4	C	202	EDO	1	0
4	E	201	EDO	1	0
4	A	201	EDO	2	0
4	C	204	EDO	1	0

## 5.7 Other polymers [i](#)

There are no such residues in this entry.

## 5.8 Polymer linkage issues [i](#)

There are no chain breaks in this entry.

## 6 Fit of model and data [i](#)

### 6.1 Protein, DNA and RNA chains [i](#)

In the following table, the column labelled ‘#RSRZ> 2’ contains the number (and percentage) of RSRZ outliers, followed by percent RSRZ outliers for the chain as percentile scores relative to all X-ray entries and entries of similar resolution. The OWAB column contains the minimum, median, 95<sup>th</sup> percentile and maximum values of the occupancy-weighted average B-factor per residue. The column labelled ‘Q< 0.9’ lists the number of (and percentage) of residues with an average occupancy less than 0.9.

Mol	Chain	Analysed	<RSRZ>	#RSRZ>2	OWAB(Å <sup>2</sup> )	Q<0.9
1	A	133/133 (100%)	-0.48	0 100 100	6, 13, 24, 29	0
1	C	133/133 (100%)	-0.60	0 100 100	6, 11, 19, 29	0
1	E	133/133 (100%)	-0.50	0 100 100	6, 13, 24, 35	0
1	G	133/133 (100%)	-0.63	0 100 100	5, 11, 19, 27	0
2	B	16/19 (84%)	-0.29	0 100 100	8, 13, 32, 38	0
2	D	15/19 (78%)	-0.19	0 100 100	7, 11, 31, 35	0
2	F	16/19 (84%)	-0.27	0 100 100	6, 11, 30, 33	0
2	H	15/19 (78%)	-0.38	0 100 100	7, 11, 24, 26	0
All	All	594/608 (97%)	-0.53	0 100 100	5, 12, 24, 38	0

There are no RSRZ outliers to report.

### 6.2 Non-standard residues in protein, DNA, RNA chains [i](#)

There are no non-standard protein/DNA/RNA residues in this entry.

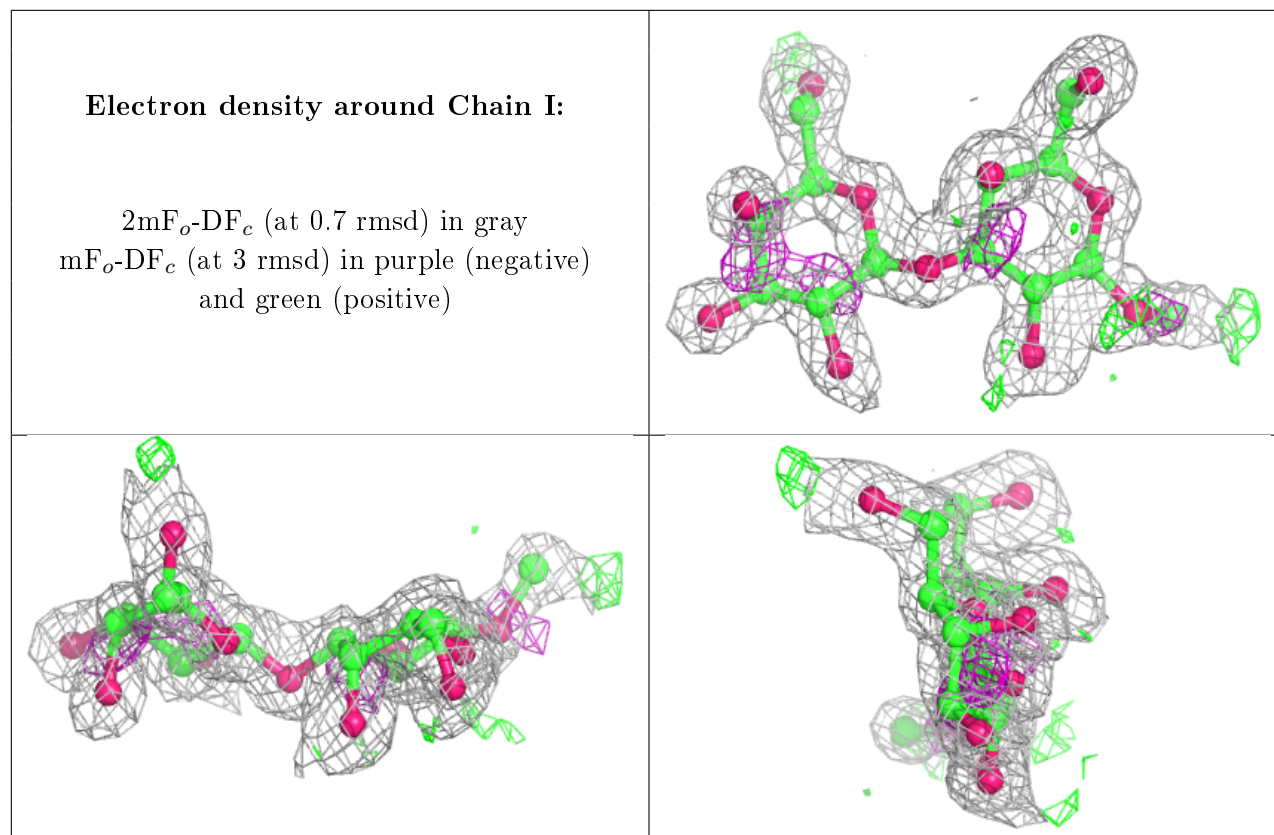
### 6.3 Carbohydrates [i](#)

In the following table, the Atoms column lists the number of modelled atoms in the group and the number defined in the chemical component dictionary. The B-factors column lists the minimum, median, 95<sup>th</sup> percentile and maximum values of B factors of atoms in the group. The column labelled ‘Q< 0.9’ lists the number of atoms with occupancy less than 0.9.

Mol	Type	Chain	Res	Atoms	RSCC	RSR	B-factors(Å <sup>2</sup> )	Q<0.9
3	MBG	I	1	13/13	0.88	0.15	18,20,26,26	0
3	GAL	I	2	11/12	0.89	0.26	19,21,23,23	0

The following is a graphical depiction of the model fit to experimental electron density for oligosac-

charide. Each fit is shown from different orientation to approximate a three-dimensional view.



## 6.4 Ligands ⓘ

In the following table, the Atoms column lists the number of modelled atoms in the group and the number defined in the chemical component dictionary. The B-factors column lists the minimum, median, 95<sup>th</sup> percentile and maximum values of B factors of atoms in the group. The column labelled 'Q< 0.9' lists the number of atoms with occupancy less than 0.9.

Mol	Type	Chain	Res	Atoms	RSCC	RSR	B-factors( $\text{\AA}^2$ )	Q<0.9
4	EDO	C	204	4/4	0.82	0.13	40,40,40,41	0
4	EDO	G	203	4/4	0.83	0.16	32,32,33,33	0
4	EDO	E	201	4/4	0.83	0.31	35,35,36,37	0
5	IPA	A	204	4/4	0.83	0.18	24,25,42,54	0
4	EDO	A	201	4/4	0.85	0.17	36,36,36,37	0
4	EDO	F	101	4/4	0.85	0.29	29,29,29,30	0
4	EDO	E	202	4/4	0.87	0.12	31,32,32,32	0
4	EDO	G	202	4/4	0.88	0.19	31,31,31,32	0
4	EDO	C	203	4/4	0.89	0.21	36,37,37,39	0
4	EDO	C	201	4/4	0.89	0.14	30,30,31,31	0
4	EDO	A	202	4/4	0.90	0.28	36,36,37,37	0
4	EDO	H	101	4/4	0.90	0.20	38,38,39,40	0
4	EDO	A	203	4/4	0.90	0.13	31,31,31,32	0

*Continued on next page...*

*Continued from previous page...*

Mol	Type	Chain	Res	Atoms	RSCC	RSR	B-factors( $\text{\AA}^2$ )	Q<0.9
4	EDO	C	202	4/4	0.93	0.13	29,29,29,29	0
4	EDO	D	101	4/4	0.93	0.14	31,32,32,32	0
4	EDO	G	201	4/4	0.93	0.16	33,33,33,33	0

## 6.5 Other polymers [i](#)

There are no such residues in this entry.