



Full wwPDB X-ray Structure Validation Report ⓘ

Aug 20, 2020 – 07:34 PM BST

PDB ID : 5J5G
Title : X-Ray Crystal Structure of Acetylcholine Binding Protein (AChBP) in Complex with 6-(4-methoxyphenyl)-N4,N4-bis[(pyridin-2-yl)methyl]pyrimidine-2,4-diamine
Authors : Kaczanowska, K.; Harel, M.; Camacho Hernandez, A.G.; Taylor, P.
Deposited on : 2016-04-02
Resolution : 2.04 Å(reported)

This is a Full wwPDB X-ray Structure Validation Report for a publicly released PDB entry.

We welcome your comments at validation@mail.wwpdb.org

A user guide is available at

<https://www.wwpdb.org/validation/2017/XrayValidationReportHelp>

with specific help available everywhere you see the ⓘ symbol.

The following versions of software and data (see [references ⓘ](#)) were used in the production of this report:

MolProbity : 4.02b-467
Mogul : 1.8.5 (274361), CSD as541be (2020)
Xtriage (Phenix) : 1.13
EDS : 2.13.1
buster-report : 1.1.7 (2018)
Percentile statistics : 20191225.v01 (using entries in the PDB archive December 25th 2019)
Refmac : 5.8.0158
CCP4 : 7.0.044 (Gargrove)
Ideal geometry (proteins) : Engh & Huber (2001)
Ideal geometry (DNA, RNA) : Parkinson et al. (1996)
Validation Pipeline (wwPDB-VP) : 2.13.1

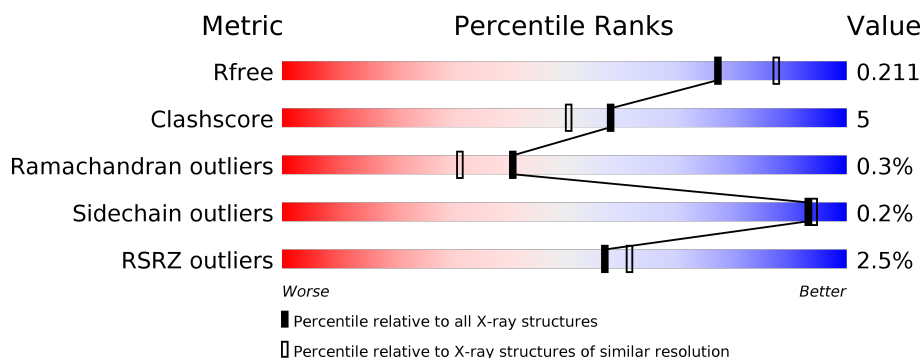
1 Overall quality at a glance i

The following experimental techniques were used to determine the structure:

X-RAY DIFFRACTION

The reported resolution of this entry is 2.04 Å.

Percentile scores (ranging between 0-100) for global validation metrics of the entry are shown in the following graphic. The table shows the number of entries on which the scores are based.



Metric	Whole archive (#Entries)	Similar resolution (#Entries, resolution range(Å))
R_{free}	130704	1692 (2.04-2.04)
Clashscore	141614	1773 (2.04-2.04)
Ramachandran outliers	138981	1752 (2.04-2.04)
Sidechain outliers	138945	1752 (2.04-2.04)
RSRZ outliers	127900	1672 (2.04-2.04)

The table below summarises the geometric issues observed across the polymeric chains and their fit to the electron density. The red, orange, yellow and green segments on the lower bar indicate the fraction of residues that contain outliers for ≥ 3 , 2, 1 and 0 types of geometric quality criteria respectively. A grey segment represents the fraction of residues that are not modelled. The numeric value for each fraction is indicated below the corresponding segment, with a dot representing fractions $\leq 5\%$. The upper red bar (where present) indicates the fraction of residues that have poor fit to the electron density. The numeric value is given above the bar.

Mol	Chain	Length	Quality of chain
1	A	218	<div> <div>2%</div> <div>89%</div> <div>7%</div> <div>••</div> </div>
1	B	218	<div> <div>5%</div> <div>86%</div> <div>13%</div> </div>
1	C	218	<div> <div>%</div> <div>89%</div> <div>11%</div> </div>
1	D	218	<div> <div>2%</div> <div>91%</div> <div>7%</div> <div>•</div> </div>
1	E	218	<div> <div>%</div> <div>86%</div> <div>11%</div> <div>•</div> </div>
1	F	218	<div> <div>5%</div> <div>89%</div> <div>11%</div> </div>

Continued on next page...

Continued from previous page...

Mol	Chain	Length	Quality of chain
1	G	218	<div><div></div><div>4%</div><div>89%</div><div>11%</div></div>
1	H	218	<div><div></div><div>%</div><div>84%</div><div>13%</div><div>•</div></div>
1	I	218	<div><div></div><div>%</div><div>89%</div><div>8%</div><div>•</div></div>
1	J	218	<div><div></div><div>2%</div><div>85%</div><div>12%</div><div>•</div></div>

2 Entry composition

There are 5 unique types of molecules in this entry. The entry contains 19228 atoms, of which 0 are hydrogens and 0 are deuteriums.

In the tables below, the ZeroOcc column contains the number of atoms modelled with zero occupancy, the AltConf column contains the number of residues with at least one atom in alternate conformation and the Trace column contains the number of residues modelled with at most 2 atoms.

- Molecule 1 is a protein called Acetylcholine-binding protein.

Mol	Chain	Residues	Atoms					ZeroOcc	AltConf	Trace
1	A	213	Total	C	N	O	S	0	4	0
			1727	1079	293	350	5			
1	B	218	Total	C	N	O	S	0	2	0
			1760	1098	298	359	5			
1	C	218	Total	C	N	O	S	0	3	0
			1763	1100	301	357	5			
1	D	213	Total	C	N	O	S	0	4	0
			1731	1081	293	352	5			
1	E	212	Total	C	N	O	S	0	4	0
			1732	1080	294	353	5			
1	F	218	Total	C	N	O	S	0	1	0
			1751	1092	298	356	5			
1	G	218	Total	C	N	O	S	0	3	0
			1760	1099	298	358	5			
1	H	213	Total	C	N	O	S	0	4	0
			1732	1081	292	354	5			
1	I	213	Total	C	N	O	S	0	5	0
			1727	1078	291	353	5			
1	J	213	Total	C	N	O	S	0	5	0
			1733	1082	293	353	5			

There are 80 discrepancies between the modelled and reference sequences:

Chain	Residue	Modelled	Actual	Comment	Reference
A	-7	ASP	-	expression tag	UNP P58154
A	-6	TYR	-	expression tag	UNP P58154
A	-5	LYS	-	expression tag	UNP P58154
A	-4	ASP	-	expression tag	UNP P58154
A	-3	ASP	-	expression tag	UNP P58154
A	-2	ASP	-	expression tag	UNP P58154
A	-1	ASP	-	expression tag	UNP P58154
A	0	LYS	-	expression tag	UNP P58154
B	-7	ASP	-	expression tag	UNP P58154

Continued on next page...

Continued from previous page...

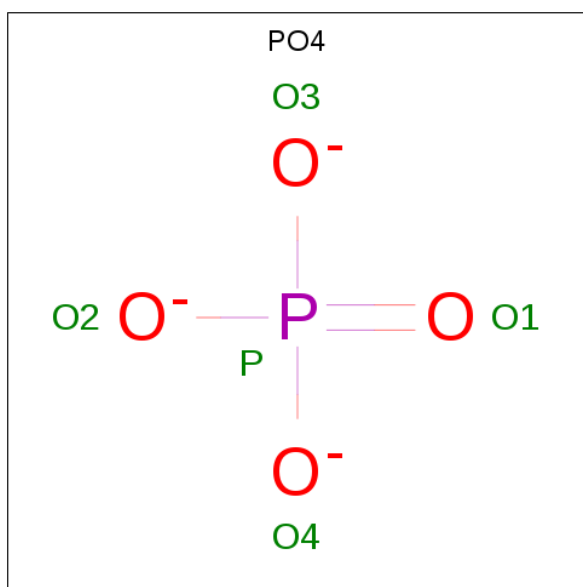
Chain	Residue	Modelled	Actual	Comment	Reference
B	-6	TYR	-	expression tag	UNP P58154
B	-5	LYS	-	expression tag	UNP P58154
B	-4	ASP	-	expression tag	UNP P58154
B	-3	ASP	-	expression tag	UNP P58154
B	-2	ASP	-	expression tag	UNP P58154
B	-1	ASP	-	expression tag	UNP P58154
B	0	LYS	-	expression tag	UNP P58154
C	-7	ASP	-	expression tag	UNP P58154
C	-6	TYR	-	expression tag	UNP P58154
C	-5	LYS	-	expression tag	UNP P58154
C	-4	ASP	-	expression tag	UNP P58154
C	-3	ASP	-	expression tag	UNP P58154
C	-2	ASP	-	expression tag	UNP P58154
C	-1	ASP	-	expression tag	UNP P58154
C	0	LYS	-	expression tag	UNP P58154
D	-7	ASP	-	expression tag	UNP P58154
D	-6	TYR	-	expression tag	UNP P58154
D	-5	LYS	-	expression tag	UNP P58154
D	-4	ASP	-	expression tag	UNP P58154
D	-3	ASP	-	expression tag	UNP P58154
D	-2	ASP	-	expression tag	UNP P58154
D	-1	ASP	-	expression tag	UNP P58154
D	0	LYS	-	expression tag	UNP P58154
E	-7	ASP	-	expression tag	UNP P58154
E	-6	TYR	-	expression tag	UNP P58154
E	-5	LYS	-	expression tag	UNP P58154
E	-4	ASP	-	expression tag	UNP P58154
E	-3	ASP	-	expression tag	UNP P58154
E	-2	ASP	-	expression tag	UNP P58154
E	-1	ASP	-	expression tag	UNP P58154
E	0	LYS	-	expression tag	UNP P58154
F	-7	ASP	-	expression tag	UNP P58154
F	-6	TYR	-	expression tag	UNP P58154
F	-5	LYS	-	expression tag	UNP P58154
F	-4	ASP	-	expression tag	UNP P58154
F	-3	ASP	-	expression tag	UNP P58154
F	-2	ASP	-	expression tag	UNP P58154
F	-1	ASP	-	expression tag	UNP P58154
F	0	LYS	-	expression tag	UNP P58154
G	-7	ASP	-	expression tag	UNP P58154
G	-6	TYR	-	expression tag	UNP P58154
G	-5	LYS	-	expression tag	UNP P58154

Continued on next page...

Continued from previous page...

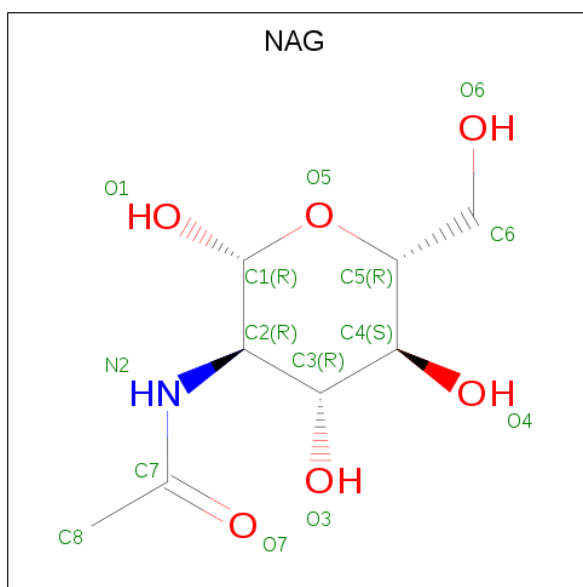
Chain	Residue	Modelled	Actual	Comment	Reference
G	-4	ASP	-	expression tag	UNP P58154
G	-3	ASP	-	expression tag	UNP P58154
G	-2	ASP	-	expression tag	UNP P58154
G	-1	ASP	-	expression tag	UNP P58154
G	0	LYS	-	expression tag	UNP P58154
H	-7	ASP	-	expression tag	UNP P58154
H	-6	TYR	-	expression tag	UNP P58154
H	-5	LYS	-	expression tag	UNP P58154
H	-4	ASP	-	expression tag	UNP P58154
H	-3	ASP	-	expression tag	UNP P58154
H	-2	ASP	-	expression tag	UNP P58154
H	-1	ASP	-	expression tag	UNP P58154
H	0	LYS	-	expression tag	UNP P58154
I	-7	ASP	-	expression tag	UNP P58154
I	-6	TYR	-	expression tag	UNP P58154
I	-5	LYS	-	expression tag	UNP P58154
I	-4	ASP	-	expression tag	UNP P58154
I	-3	ASP	-	expression tag	UNP P58154
I	-2	ASP	-	expression tag	UNP P58154
I	-1	ASP	-	expression tag	UNP P58154
I	0	LYS	-	expression tag	UNP P58154
J	-7	ASP	-	expression tag	UNP P58154
J	-6	TYR	-	expression tag	UNP P58154
J	-5	LYS	-	expression tag	UNP P58154
J	-4	ASP	-	expression tag	UNP P58154
J	-3	ASP	-	expression tag	UNP P58154
J	-2	ASP	-	expression tag	UNP P58154
J	-1	ASP	-	expression tag	UNP P58154
J	0	LYS	-	expression tag	UNP P58154

- Molecule 2 is PHOSPHATE ION (three-letter code: PO4) (formula: O₄P).



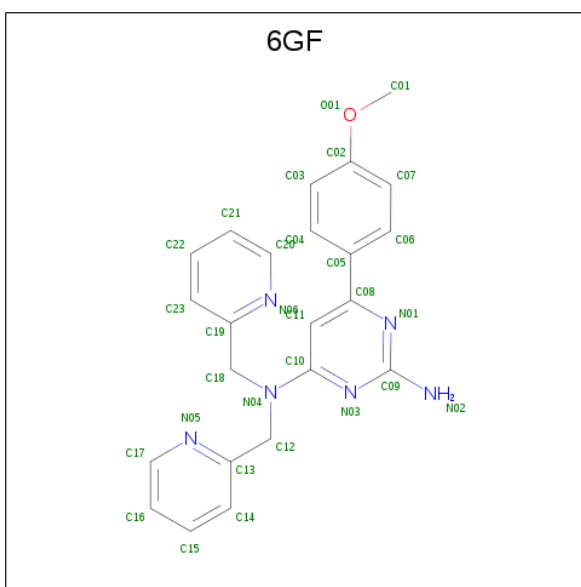
Mol	Chain	Residues	Atoms			ZeroOcc	AltConf
2	A	1	Total	O	P	0	0
			5	4	1		
2	A	1	Total	O	P	0	0
			5	4	1		
2	C	1	Total	O	P	0	0
			5	4	1		
2	C	1	Total	O	P	0	0
			5	4	1		
2	E	1	Total	O	P	0	0
			5	4	1		
2	G	1	Total	O	P	0	0
			5	4	1		
2	H	1	Total	O	P	0	0
			5	4	1		
2	H	1	Total	O	P	0	0
			5	4	1		
2	J	1	Total	O	P	0	0
			5	4	1		
2	J	1	Total	O	P	0	0
			5	4	1		

- Molecule 3 is 2-acetamido-2-deoxy-beta-D-glucopyranose (three-letter code: NAG) (formula: $C_8H_{15}NO_6$).



Mol	Chain	Residues	Atoms				ZeroOcc	AltConf
3	A	1	Total	C	N	O	0	0
			14	8	1	5		
3	B	1	Total	C	N	O	0	0
			14	8	1	5		
3	C	1	Total	C	N	O	0	0
			14	8	1	5		
3	D	1	Total	C	N	O	0	0
			14	8	1	5		
3	E	1	Total	C	N	O	0	0
			14	8	1	5		
3	F	1	Total	C	N	O	0	0
			14	8	1	5		
3	G	1	Total	C	N	O	0	0
			14	8	1	5		
3	H	1	Total	C	N	O	0	0
			14	8	1	5		
3	I	1	Total	C	N	O	0	0
			14	8	1	5		
3	J	1	Total	C	N	O	0	0
			14	8	1	5		

- Molecule 4 is 6-(4-methoxyphenyl)-N 4 ,N 4 -bis[(pyridin-2-yl)methyl]pyrimidine-2,4-diamine (three-letter code: 6GF) (formula: C₂₃H₂₂N₆O).



Mol	Chain	Residues	Atoms				ZeroOcc	AltConf
4	A	1	Total	C	N	O	0	0
			30	23	6	1		
4	C	1	Total	C	N	O	0	0
			30	23	6	1		
4	C	1	Total	C	N	O	0	0
			30	23	6	1		
4	E	1	Total	C	N	O	0	0
			30	23	6	1		
4	E	1	Total	C	N	O	0	0
			30	23	6	1		
4	F	1	Total	C	N	O	0	0
			30	23	6	1		
4	F	1	Total	C	N	O	0	0
			30	23	6	1		
4	H	1	Total	C	N	O	0	0
			30	23	6	1		
4	I	1	Total	C	N	O	0	0
			30	23	6	1		
4	J	1	Total	C	N	O	0	0
			30	23	6	1		

- Molecule 5 is water.

Mol	Chain	Residues	Atoms		ZeroOcc	AltConf
5	A	134	Total	O	0	0
			134	134		
5	B	114	Total	O	0	0
			114	114		

Continued on next page...

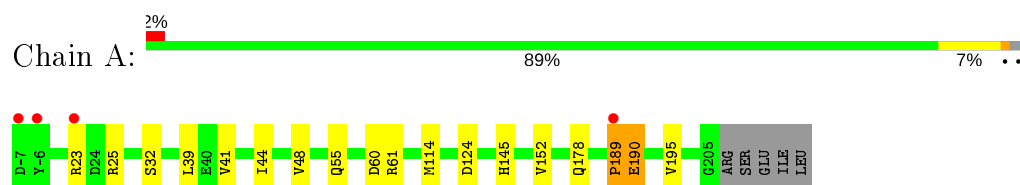
Continued from previous page...

Mol	Chain	Residues	Atoms		ZeroOcc	AltConf
5	C	121	Total 121	O 121	0	0
5	D	157	Total 157	O 157	0	0
5	E	129	Total 129	O 129	0	0
5	F	129	Total 129	O 129	0	0
5	G	113	Total 113	O 113	0	0
5	H	136	Total 136	O 136	0	0
5	I	141	Total 141	O 141	0	0
5	J	148	Total 148	O 148	0	0

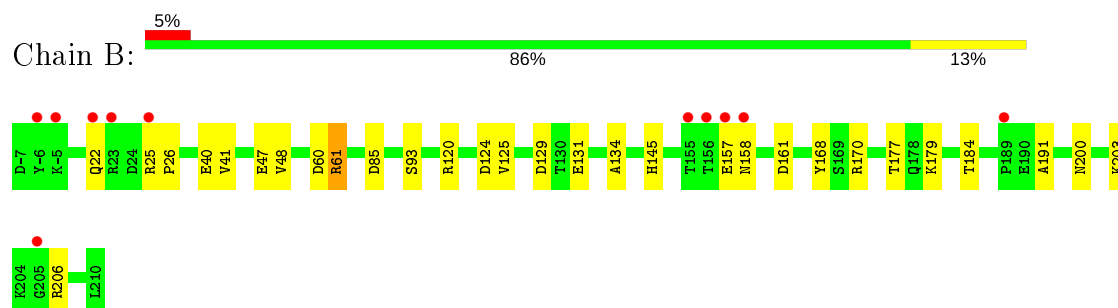
3 Residue-property plots [i](#)

These plots are drawn for all protein, RNA, DNA and oligosaccharide chains in the entry. The first graphic for a chain summarises the proportions of the various outlier classes displayed in the second graphic. The second graphic shows the sequence view annotated by issues in geometry and electron density. Residues are color-coded according to the number of geometric quality criteria for which they contain at least one outlier: green = 0, yellow = 1, orange = 2 and red = 3 or more. A red dot above a residue indicates a poor fit to the electron density ($RSRZ > 2$). Stretches of 2 or more consecutive residues without any outlier are shown as a green connector. Residues present in the sample, but not in the model, are shown in grey.

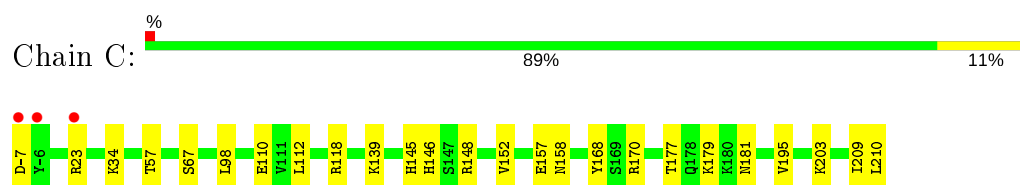
- Molecule 1: Acetylcholine-binding protein



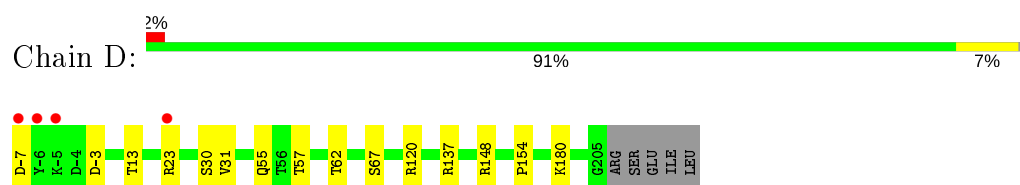
- Molecule 1: Acetylcholine-binding protein



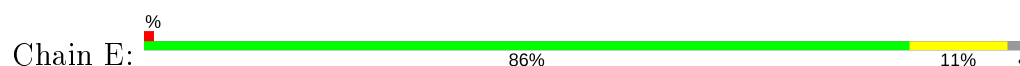
- Molecule 1: Acetylcholine-binding protein

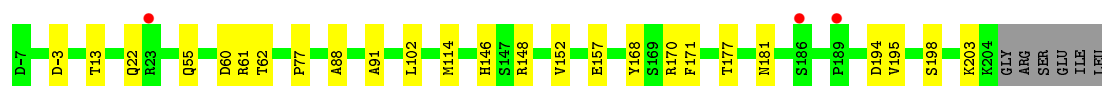


- Molecule 1: Acetylcholine-binding protein

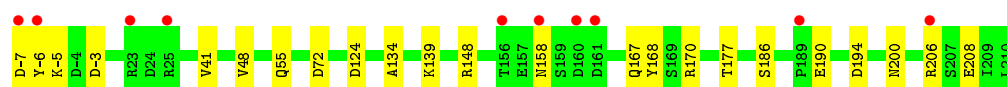
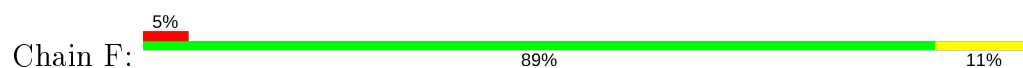


- Molecule 1: Acetylcholine-binding protein

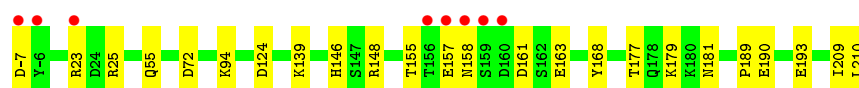
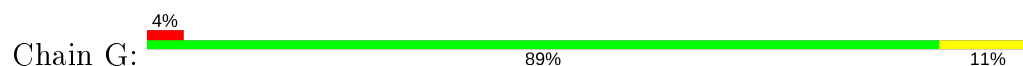




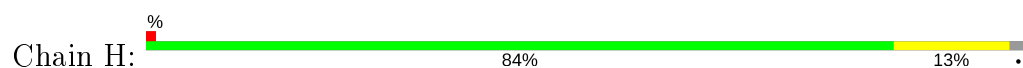
- Molecule 1: Acetylcholine-binding protein



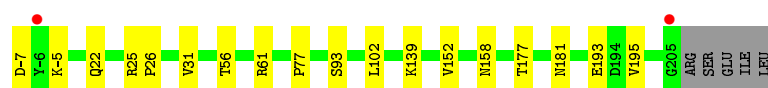
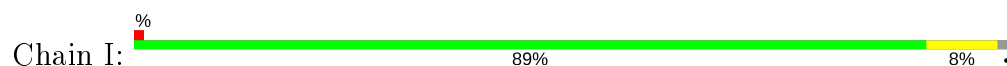
- Molecule 1: Acetylcholine-binding protein



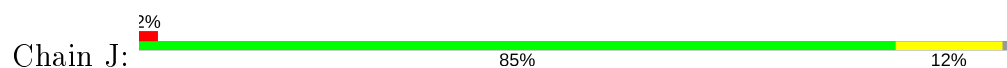
- Molecule 1: Acetylcholine-binding protein



- Molecule 1: Acetylcholine-binding protein



- Molecule 1: Acetylcholine-binding protein



4 Data and refinement statistics

Property	Value	Source
Space group	P 1 21 1	Depositor
Cell constants a, b, c, α , β , γ	87.72Å 125.75Å 118.73Å 90.00° 109.17° 90.00°	Depositor
Resolution (Å)	49.54 – 2.04 49.54 – 2.04	Depositor EDS
% Data completeness (in resolution range)	99.5 (49.54-2.04) 99.5 (49.54-2.04)	Depositor EDS
R_{merge}	0.12	Depositor
R_{sym}	(Not available)	Depositor
$\langle I/\sigma(I) \rangle$ ¹	1.27 (at 2.03Å)	Xtriage
Refinement program	PHENIX 1.8_1069	Depositor
R, R_{free}	0.166 , 0.209 0.169 , 0.211	Depositor DCC
R_{free} test set	1996 reflections (1.29%)	wwPDB-VP
Wilson B-factor (Å ²)	24.1	Xtriage
Anisotropy	0.149	Xtriage
Bulk solvent k_{sol} (e/Å ³), B_{sol} (Å ²)	0.36 , 46.4	EDS
L-test for twinning ²	$\langle L \rangle = 0.50$, $\langle L^2 \rangle = 0.34$	Xtriage
Estimated twinning fraction	0.008 for h,-k,-h-l	Xtriage
F_o, F_c correlation	0.96	EDS
Total number of atoms	19228	wwPDB-VP
Average B, all atoms (Å ²)	27.0	wwPDB-VP

Xtriage's analysis on translational NCS is as follows: *The largest off-origin peak in the Patterson function is 4.01% of the height of the origin peak. No significant pseudotranslation is detected.*

¹Intensities estimated from amplitudes.

²Theoretical values of $\langle |L| \rangle$, $\langle L^2 \rangle$ for acentric reflections are 0.5, 0.333 respectively for untwinned datasets, and 0.375, 0.2 for perfectly twinned datasets.

5 Model quality ⓘ

5.1 Standard geometry ⓘ

Bond lengths and bond angles in the following residue types are not validated in this section: PO4, 6GF, NAG

The Z score for a bond length (or angle) is the number of standard deviations the observed value is removed from the expected value. A bond length (or angle) with $|Z| > 5$ is considered an outlier worth inspection. RMSZ is the root-mean-square of all Z scores of the bond lengths (or angles).

Mol	Chain	Bond lengths		Bond angles	
		RMSZ	# $ Z > 5$	RMSZ	# $ Z > 5$
1	A	0.41	0/1777	0.54	0/2422
1	B	0.41	0/1803	0.58	2/2457 (0.1%)
1	C	0.40	0/1809	0.55	0/2465
1	D	0.42	0/1783	0.55	0/2431
1	E	0.42	0/1781	0.54	0/2428
1	F	0.38	0/1791	0.52	0/2441
1	G	0.41	0/1806	0.55	0/2462
1	H	0.43	0/1784	0.59	0/2432
1	I	0.42	0/1779	0.54	0/2426
1	J	0.48	0/1785	0.61	0/2433
All	All	0.42	0/17898	0.56	2/24397 (0.0%)

There are no bond length outliers.

All (2) bond angle outliers are listed below:

Mol	Chain	Res	Type	Atoms	Z	Observed(°)	Ideal(°)
1	B	61	ARG	NE-CZ-NH1	5.10	122.85	120.30
1	B	22	GLN	N-CA-C	-5.04	97.39	111.00

There are no chirality outliers.

There are no planarity outliers.

5.2 Too-close contacts ⓘ

In the following table, the Non-H and H(model) columns list the number of non-hydrogen atoms and hydrogen atoms in the chain respectively. The H(added) column lists the number of hydrogen atoms added and optimized by MolProbity. The Clashes column lists the number of clashes within the asymmetric unit, whereas Symm-Clashes lists symmetry related clashes.

Mol	Chain	Non-H	H(model)	H(added)	Clashes	Symm-Clashes
1	A	1727	0	1666	16	0
1	B	1760	0	1693	25	0
1	C	1763	0	1706	20	0
1	D	1731	0	1671	11	0
1	E	1732	0	1665	16	0
1	F	1751	0	1686	17	0
1	G	1760	0	1699	16	0
1	H	1732	0	1666	27	0
1	I	1727	0	1666	13	0
1	J	1733	0	1672	26	0
2	A	10	0	0	1	0
2	C	10	0	0	1	0
2	E	5	0	0	0	0
2	G	5	0	0	0	0
2	H	10	0	0	1	0
2	J	10	0	0	0	0
3	A	14	0	13	0	0
3	B	14	0	13	0	0
3	C	14	0	13	0	0
3	D	14	0	13	0	0
3	E	14	0	13	0	0
3	F	14	0	13	0	0
3	G	14	0	13	0	0
3	H	14	0	13	1	0
3	I	14	0	13	0	0
3	J	14	0	13	0	0
4	A	30	0	0	0	0
4	C	60	0	0	1	0
4	E	60	0	0	3	0
4	F	60	0	0	2	0
4	H	30	0	0	0	0
4	I	30	0	0	0	0
4	J	30	0	0	1	0
5	A	134	0	0	3	0
5	B	114	0	0	3	0
5	C	121	0	0	2	0
5	D	157	0	0	1	0
5	E	129	0	0	2	0
5	F	129	0	0	1	0
5	G	113	0	0	1	0
5	H	136	0	0	3	0
5	I	141	0	0	1	0
5	J	148	0	0	5	0

Continued on next page...

Continued from previous page...

Mol	Chain	Non-H	H(model)	H(added)	Clashes	Symm-Clashes
All	All	19228	0	16920	167	0

The all-atom clashscore is defined as the number of clashes found per 1000 atoms (including hydrogen atoms). The all-atom clashscore for this structure is 5.

All (167) close contacts within the same asymmetric unit are listed below, sorted by their clash magnitude.

Atom-1	Atom-2	Interatomic distance (Å)	Clash overlap (Å)
1:J:23:ARG:HG2	1:J:25:ARG:HG2	1.46	0.97
1:G:157:GLU:OE1	1:G:158:ASN:ND2	2.13	0.82
1:H:181:ASN:ND2	5:H:401:HOH:O	2.13	0.81
1:J:22:GLN:NE2	1:J:61:ARG:H	1.80	0.79
1:B:158:ASN:ND2	1:B:177:THR:OG1	2.17	0.78
1:J:23:ARG:HG2	1:J:25:ARG:CG	2.15	0.75
1:B:25:ARG:HD2	1:B:26:PRO:HD2	1.70	0.73
1:B:93:SER:HA	1:C:118[A]:ARG:NH1	2.04	0.73
1:F:41:VAL:HG12	1:F:48:VAL:HG23	1.74	0.69
1:J:22:GLN:HE22	1:J:61:ARG:H	1.42	0.68
1:J:120:ARG:NH1	5:J:403:HOH:O	2.27	0.67
1:H:68:SER:HB2	3:H:303:NAG:HN2	1.60	0.66
1:J:118[A]:ARG:NE	5:J:404:HOH:O	2.27	0.66
1:F:-3:ASP:OD2	1:J:148:ARG:NH1	2.29	0.65
1:H:181:ASN:HD22	1:H:182:SER:H	1.45	0.65
1:H:23:ARG:HB2	1:H:25:ARG:HG3	1.79	0.64
1:C:179:LYS:HE3	1:C:179:LYS:HA	1.78	0.64
1:C:152:VAL:HG12	1:C:195:VAL:HG23	1.78	0.64
1:E:152:VAL:HG12	1:E:195:VAL:HG23	1.79	0.63
1:B:131:GLU:OE1	1:B:206:ARG:NH2	2.29	0.63
1:I:139:LYS:NZ	1:I:181:ASN:OD1	2.29	0.63
1:G:23:ARG:HB2	1:G:25:ARG:HH11	1.63	0.63
1:H:181:ASN:HB3	1:H:194:ASP:OD1	1.97	0.63
1:G:139:LYS:NZ	1:G:181:ASN:OD1	2.32	0.63
1:H:61:ARG:HH11	1:H:61:ARG:HG3	1.65	0.62
1:G:94:LYS:HE3	1:H:96[A]:GLU:HG3	1.82	0.62
1:E:22:GLN:OE1	1:E:61:ARG:HG3	2.00	0.62
1:C:148:ARG:NH2	1:D:-3:ASP:OD2	2.32	0.62
1:H:22:GLN:NE2	1:H:61:ARG:H	1.98	0.61
1:I:22:GLN:NE2	1:I:61:ARG:H	1.98	0.61
1:G:23:ARG:HB2	1:G:25:ARG:NH1	2.15	0.61
1:C:110:GLU:OE1	5:C:401:HOH:O	2.16	0.60
1:I:193:GLU:O	5:I:401:HOH:O	2.17	0.60

Continued on next page...

Continued from previous page...

Atom-1	Atom-2	Interatomic distance (Å)	Clash overlap (Å)
1:H:47:GLU:OE1	1:H:120:ARG:NH1	2.35	0.59
1:H:175[B]:ASP:OD1	1:H:200:ASN:ND2	2.35	0.59
1:B:25:ARG:HG3	1:B:26:PRO:O	2.02	0.59
1:J:43[B]:GLU:OE2	1:J:128:VAL:HG11	2.04	0.58
1:D:154:PRO:HD2	1:D:180:LYS:HE2	1.85	0.58
1:D:148:ARG:NH2	1:E:-3:ASP:OD2	2.37	0.57
1:J:96:GLU:HG3	1:J:118[A]:ARG:HH21	1.69	0.57
1:A:152:VAL:HG12	1:A:195:VAL:HG23	1.86	0.57
1:H:22:GLN:HE22	1:H:61:ARG:HG3	1.68	0.57
1:E:171:PHE:CE2	1:E:203:LYS:HG2	2.40	0.56
1:F:139:LYS:HG3	1:F:194:ASP:OD2	2.04	0.56
1:B:157:GLU:HG3	1:B:179:LYS:HE3	1.88	0.56
1:J:23:ARG:CZ	1:J:25:ARG:HG3	2.35	0.56
1:D:137:ARG:NH1	1:E:168:TYR:OH	2.38	0.56
1:H:49:ASP:OD1	1:H:120:ARG:HG2	2.07	0.55
1:A:39:LEU:O	5:A:401:HOH:O	2.18	0.55
1:I:25:ARG:HD2	1:I:26:PRO:HD2	1.89	0.55
1:B:170:ARG:NH2	5:B:407:HOH:O	2.40	0.55
1:I:152:VAL:HG12	1:I:195:VAL:HG23	1.89	0.54
1:H:192:TYR:OH	5:H:402:HOH:O	2.14	0.53
1:C:-7:ASP:N	1:C:67:SER:O	2.42	0.53
1:J:43[A]:GLU:HG2	1:J:125:VAL:HG12	1.90	0.53
1:A:41:VAL:HG22	1:A:48:VAL:HG23	1.90	0.53
1:J:60:ASP:OD2	5:J:401:HOH:O	2.18	0.53
1:B:61:ARG:HG2	1:B:61:ARG:HH11	1.74	0.52
1:J:152:VAL:HG12	1:J:195:VAL:HG23	1.91	0.52
1:A:60:ASP:OD2	5:A:402:HOH:O	2.19	0.52
1:G:193:GLU:O	5:G:401:HOH:O	2.19	0.52
1:J:23:ARG:CG	1:J:25:ARG:HG2	2.30	0.52
1:E:181:ASN:HB3	1:E:194:ASP:OD1	2.10	0.51
1:J:55:GLN:HB3	4:J:304:6GF:C03	2.40	0.51
1:F:-6:TYR:HD1	1:J:148:ARG:HH12	1.59	0.51
1:C:57[B]:THR:HG22	1:C:112:LEU:HG	1.93	0.50
1:D:120:ARG:NH2	5:D:403:HOH:O	2.35	0.50
1:E:13:THR:HG21	1:E:62:THR:O	2.11	0.50
1:E:177:THR:OG1	1:E:198:SER:HB2	2.12	0.49
1:B:184:THR:HG22	1:B:191:ALA:HA	1.94	0.49
1:A:32:SER:HB2	1:A:178:GLN:HE22	1.78	0.49
1:B:25:ARG:HD2	1:B:26:PRO:CD	2.40	0.49
1:B:93:SER:HA	1:C:118[A]:ARG:HH12	1.76	0.49
1:C:209:ILE:O	1:C:210:LEU:HB2	2.13	0.48

Continued on next page...

Continued from previous page...

Atom-1	Atom-2	Interatomic distance (Å)	Clash overlap (Å)
1:E:55:GLN:HB3	4:E:303:6GF:C03	2.44	0.48
1:H:181:ASN:OD1	1:H:196:GLU:OE1	2.30	0.48
1:I:25:ARG:CD	1:I:26:PRO:HD2	2.43	0.48
1:C:34:LYS:NZ	5:C:404:HOH:O	2.46	0.48
1:F:55:GLN:HB3	4:F:303:6GF:C03	2.44	0.48
4:F:302:6GF:C03	1:G:55:GLN:HB3	2.43	0.48
1:J:30:SER:HB2	1:J:57:THR:HG22	1.96	0.48
1:F:168:TYR:CE1	1:J:124:ASP:HB2	2.49	0.48
1:H:22:GLN:OE1	1:H:61:ARG:NH1	2.47	0.48
1:C:157:GLU:HG3	1:C:179:LYS:CD	2.43	0.48
1:H:49:ASP:OD1	1:H:120:ARG:NE	2.45	0.48
1:A:23:ARG:HD2	1:A:25:ARG:NH2	2.29	0.47
1:A:44:ILE:O	1:B:170:ARG:HD3	2.14	0.47
1:C:146:HIS:CE1	1:C:148:ARG:HB2	2.48	0.47
1:D:23:ARG:HE	1:D:23:ARG:HB2	1.45	0.47
1:I:31:VAL:HG22	1:I:56:THR:HG23	1.95	0.47
1:C:157:GLU:O	1:C:177:THR:HA	2.14	0.47
1:I:-7[B]:ASP:OD2	1:I:-5:LYS:HE3	2.13	0.47
1:C:157:GLU:HG2	1:C:158:ASN:ND2	2.29	0.47
1:A:55:GLN:HB3	4:E:304:6GF:C03	2.44	0.47
1:B:129:ASP:OD1	1:B:203:LYS:HD2	2.15	0.47
1:F:-5:LYS:HE2	1:F:-5:LYS:HB2	1.75	0.47
1:I:93:SER:HA	1:J:118[A]:ARG:HH11	1.79	0.47
1:I:25:ARG:HD3	1:I:25:ARG:HA	1.64	0.46
1:G:-7:ASP:N	1:G:72:ASP:OD1	2.47	0.46
1:A:61:ARG:NH1	5:A:405:HOH:O	2.43	0.46
1:D:-7:ASP:N	1:D:67:SER:O	2.48	0.46
1:J:154:PRO:HD2	1:J:180:LYS:HG3	1.98	0.46
1:C:98:LEU:HD21	1:C:118[A]:ARG:NH1	2.30	0.46
1:E:170:ARG:NH2	5:E:404:HOH:O	2.44	0.46
1:I:158:ASN:ND2	1:I:177:THR:HG22	2.30	0.46
1:J:155[A]:THR:HG21	5:J:506:HOH:O	2.16	0.46
1:F:-6:TYR:HD1	1:J:148:ARG:NH1	2.14	0.46
1:G:177:THR:HG21	1:G:179:LYS:HE3	1.98	0.46
1:I:22:GLN:HE21	1:I:61:ARG:H	1.62	0.46
1:F:158:ASN:OD1	1:F:177:THR:HG22	2.16	0.46
1:H:61:ARG:HG3	1:H:61:ARG:NH1	2.31	0.46
1:A:44:ILE:HG22	1:B:170:ARG:HH11	1.80	0.45
1:E:157:GLU:O	1:E:177:THR:HA	2.15	0.45
1:A:189:PRO:HG2	1:A:190[B]:GLU:HG2	1.98	0.45
1:A:145:HIS:HE1	2:A:302:PO4:O1	1.99	0.45

Continued on next page...

Continued from previous page...

Atom-1	Atom-2	Interatomic distance (Å)	Clash overlap (Å)
1:J:24:ASP:O	1:J:25:ARG:HD2	2.17	0.45
1:B:47:GLU:OE1	1:B:120:ARG:NH1	2.32	0.45
1:F:167:GLN:HG2	5:F:508:HOH:O	2.17	0.44
1:H:194:ASP:OD1	1:H:194:ASP:N	2.51	0.44
1:A:55:GLN:HB3	4:E:304:6GF:C02	2.46	0.44
1:D:30:SER:HB2	1:D:57:THR:HG22	1.99	0.44
1:E:60:ASP:OD2	5:E:401:HOH:O	2.21	0.43
1:C:57[B]:THR:HG23	4:C:304:6GF:O01	2.18	0.43
1:B:60:ASP:OD2	5:B:402:HOH:O	2.21	0.43
1:B:161:ASP:OD1	5:B:401:HOH:O	2.21	0.43
1:A:124:ASP:HB2	1:B:168:TYR:CE1	2.53	0.43
1:G:148:ARG:NH1	1:G:190:GLU:OE1	2.52	0.43
1:E:88:ALA:HB3	1:E:91:ALA:HB2	2.00	0.43
1:E:55:GLN:HG2	1:E:114:MET:SD	2.58	0.43
1:H:167:GLN:HG2	5:H:499:HOH:O	2.19	0.43
1:D:13:THR:HG21	1:D:62:THR:O	2.19	0.43
1:H:-7:ASP:N	1:H:67:SER:O	2.49	0.42
1:B:85:ASP:OD1	1:B:145:HIS:HD2	2.02	0.42
1:J:139:LYS:HD3	1:J:196[A]:GLU:OE1	2.20	0.42
1:J:55:GLN:HG2	1:J:114:MET:SD	2.60	0.42
1:G:148:ARG:CD	1:H:-6:TYR:CE1	3.03	0.42
1:E:146:HIS:CE1	1:E:148:ARG:HB2	2.54	0.42
1:B:41:VAL:HG22	1:B:48:VAL:HG12	2.02	0.42
1:F:-7:ASP:N	1:F:72:ASP:OD1	2.50	0.42
1:G:209:ILE:O	1:G:210:LEU:HB2	2.20	0.41
1:H:154:PRO:HD2	1:H:180:LYS:HG2	2.02	0.41
1:C:170:ARG:HH21	1:C:203:LYS:HE2	1.86	0.41
1:F:148:ARG:NH2	1:F:190:GLU:OE2	2.53	0.41
1:F:124:ASP:HB2	1:G:168:TYR:CE1	2.55	0.41
1:G:146:HIS:CE1	1:G:148:ARG:HB2	2.55	0.41
1:J:193:GLU:O	5:J:402:HOH:O	2.21	0.41
1:F:134:ALA:O	1:F:200:ASN:HA	2.21	0.41
1:C:139:LYS:NZ	1:C:181:ASN:OD1	2.28	0.41
1:E:77:PRO:HA	1:E:102:LEU:HD23	2.02	0.41
1:A:44:ILE:HG22	1:B:170:ARG:NH1	2.36	0.41
1:B:61:ARG:CG	1:B:61:ARG:HH11	2.34	0.41
1:B:41:VAL:HG13	1:B:125:VAL:HG11	2.02	0.41
1:C:145:HIS:HE1	2:C:302:PO4:O4	2.03	0.41
1:F:186:SER:OG	1:G:163:GLU:OE1	2.27	0.41
1:B:124:ASP:HB2	1:C:168:TYR:CE1	2.56	0.41
1:H:145:HIS:HE1	2:H:302:PO4:O2	2.04	0.41

Continued on next page...

Continued from previous page...

Atom-1	Atom-2	Interatomic distance (Å)	Clash overlap (Å)
1:H:190:GLU:CD	1:H:190:GLU:H	2.23	0.40
1:B:134:ALA:O	1:B:200:ASN:HA	2.21	0.40
1:D:154:PRO:CD	1:D:180:LYS:HG3	2.51	0.40
1:F:206:ARG:CZ	1:F:208:GLU:HG2	2.51	0.40
1:H:125:VAL:HG12	1:H:125:VAL:O	2.22	0.40
1:A:55:GLN:HG2	1:A:114:MET:SD	2.61	0.40
1:D:31:VAL:HA	1:D:55:GLN:O	2.20	0.40
1:H:41:VAL:HG22	1:H:48:VAL:HB	2.03	0.40
1:G:124:ASP:HB2	1:H:168:TYR:CE1	2.56	0.40
1:I:77:PRO:HA	1:I:102:LEU:HD23	2.04	0.40

There are no symmetry-related clashes.

5.3 Torsion angles [i](#)

5.3.1 Protein backbone [i](#)

In the following table, the Percentiles column shows the percent Ramachandran outliers of the chain as a percentile score with respect to all X-ray entries followed by that with respect to entries of similar resolution.

The Analysed column shows the number of residues for which the backbone conformation was analysed, and the total number of residues.

Mol	Chain	Analysed	Favoured	Allowed	Outliers	Percentiles	
1	A	215/218 (99%)	212 (99%)	2 (1%)	1 (0%)	29	18
1	B	218/218 (100%)	214 (98%)	4 (2%)	0	100	100
1	C	219/218 (100%)	216 (99%)	3 (1%)	0	100	100
1	D	216/218 (99%)	215 (100%)	1 (0%)	0	100	100
1	E	215/218 (99%)	213 (99%)	2 (1%)	0	100	100
1	F	217/218 (100%)	214 (99%)	3 (1%)	0	100	100
1	G	219/218 (100%)	215 (98%)	0	4 (2%)	8	2
1	H	216/218 (99%)	210 (97%)	5 (2%)	1 (0%)	29	18
1	I	215/218 (99%)	212 (99%)	3 (1%)	0	100	100
1	J	216/218 (99%)	212 (98%)	3 (1%)	1 (0%)	29	18
All	All	2166/2180 (99%)	2133 (98%)	26 (1%)	7 (0%)	41	31

All (7) Ramachandran outliers are listed below:

Mol	Chain	Res	Type
1	A	189	PRO
1	G	155	THR
1	H	189	PRO
1	J	189	PRO
1	G	161[A]	ASP
1	G	161[B]	ASP
1	G	189	PRO

5.3.2 Protein sidechains ⓘ

In the following table, the Percentiles column shows the percent sidechain outliers of the chain as a percentile score with respect to all X-ray entries followed by that with respect to entries of similar resolution.

The Analysed column shows the number of residues for which the sidechain conformation was analysed, and the total number of residues.

Mol	Chain	Analysed	Rotameric	Outliers	Percentiles	
1	A	203/204 (100%)	201 (99%)	2 (1%)	76	75
1	B	206/204 (101%)	204 (99%)	2 (1%)	76	75
1	C	207/204 (102%)	206 (100%)	1 (0%)	88	89
1	D	204/204 (100%)	204 (100%)	0	100	100
1	E	204/204 (100%)	204 (100%)	0	100	100
1	F	205/204 (100%)	205 (100%)	0	100	100
1	G	207/204 (102%)	207 (100%)	0	100	100
1	H	204/204 (100%)	203 (100%)	1 (0%)	88	89
1	I	204/204 (100%)	204 (100%)	0	100	100
1	J	204/204 (100%)	202 (99%)	2 (1%)	76	75
All	All	2048/2040 (100%)	2040 (100%)	8 (0%)	93	91

All (8) residues with a non-rotameric sidechain are listed below:

Mol	Chain	Res	Type
1	A	190[A]	GLU
1	A	190[B]	GLU
1	B	40[A]	GLU
1	B	40[B]	GLU
1	C	23	ARG

Continued on next page...

Continued from previous page...

Mol	Chain	Res	Type
1	H	181	ASN
1	J	43[A]	GLU
1	J	43[B]	GLU

Some sidechains can be flipped to improve hydrogen bonding and reduce clashes. All (4) such sidechains are listed below:

Mol	Chain	Res	Type
1	B	158	ASN
1	C	158	ASN
1	I	22	GLN
1	J	22	GLN

5.3.3 RNA [i](#)

There are no RNA molecules in this entry.

5.4 Non-standard residues in protein, DNA, RNA chains [i](#)

There are no non-standard protein/DNA/RNA residues in this entry.

5.5 Carbohydrates [i](#)

There are no monosaccharides in this entry.

5.6 Ligand geometry [i](#)

30 ligands are modelled in this entry.

In the following table, the Counts columns list the number of bonds (or angles) for which Mogul statistics could be retrieved, the number of bonds (or angles) that are observed in the model and the number of bonds (or angles) that are defined in the Chemical Component Dictionary. The Link column lists molecule types, if any, to which the group is linked. The Z score for a bond length (or angle) is the number of standard deviations the observed value is removed from the expected value. A bond length (or angle) with $|Z| > 2$ is considered an outlier worth inspection. RMSZ is the root-mean-square of all Z scores of the bond lengths (or angles).

Mol	Type	Chain	Res	Link	Bond lengths			Bond angles		
					Counts	RMSZ	$\# Z > 2$	Counts	RMSZ	$\# Z > 2$
3	NAG	F	301	1	14,14,15	0.39	0	17,19,21	0.95	1 (5%)

Mol	Type	Chain	Res	Link	Bond lengths			Bond angles		
					Counts	RMSZ	# Z > 2	Counts	RMSZ	# Z > 2
2	PO4	E	301	-	4,4,4	0.90	0	6,6,6	0.45	0
2	PO4	C	301	-	4,4,4	1.00	0	6,6,6	0.58	0
3	NAG	I	301	1	14,14,15	0.34	0	17,19,21	0.85	0
4	6GF	I	302	-	33,33,33	1.99	6 (18%)	44,44,44	2.26	13 (29%)
4	6GF	H	304	-	33,33,33	2.04	6 (18%)	44,44,44	2.45	13 (29%)
3	NAG	C	303	1	14,14,15	1.90	2 (14%)	17,19,21	1.42	2 (11%)
2	PO4	H	301	-	4,4,4	0.71	0	6,6,6	0.82	0
3	NAG	H	303	1	14,14,15	0.21	0	17,19,21	0.52	0
3	NAG	B	301	1	14,14,15	0.36	0	17,19,21	0.48	0
4	6GF	F	302	-	33,33,33	2.06	5 (15%)	44,44,44	2.13	12 (27%)
4	6GF	C	304	-	33,33,33	2.09	6 (18%)	44,44,44	2.24	10 (22%)
4	6GF	A	304	-	33,33,33	2.11	5 (15%)	44,44,44	2.27	12 (27%)
4	6GF	F	303	-	33,33,33	2.07	5 (15%)	44,44,44	2.18	11 (25%)
2	PO4	A	302	-	4,4,4	0.96	0	6,6,6	0.57	0
2	PO4	G	301	-	4,4,4	0.96	0	6,6,6	0.61	0
2	PO4	A	301	-	4,4,4	0.96	0	6,6,6	0.39	0
3	NAG	G	302	1	14,14,15	0.28	0	17,19,21	0.61	0
4	6GF	J	304	-	33,33,33	2.00	5 (15%)	44,44,44	2.30	10 (22%)
4	6GF	E	304	-	33,33,33	2.07	6 (18%)	44,44,44	2.15	13 (29%)
3	NAG	A	303	1	14,14,15	0.47	0	17,19,21	1.03	1 (5%)
2	PO4	H	302	-	4,4,4	0.66	0	6,6,6	0.34	0
3	NAG	E	302	1	14,14,15	0.44	0	17,19,21	0.68	0
4	6GF	E	303	-	33,33,33	2.01	6 (18%)	44,44,44	2.20	10 (22%)
2	PO4	J	302	-	4,4,4	0.59	0	6,6,6	0.71	0
2	PO4	J	301	-	4,4,4	0.57	0	6,6,6	0.33	0
4	6GF	C	305	-	33,33,33	1.98	6 (18%)	44,44,44	2.10	15 (34%)
2	PO4	C	302	-	4,4,4	0.65	0	6,6,6	0.64	0
3	NAG	J	303	1	14,14,15	0.50	0	17,19,21	0.44	0
3	NAG	D	301	1	14,14,15	0.71	1 (7%)	17,19,21	0.81	1 (5%)

In the following table, the Chirals column lists the number of chiral outliers, the number of chiral centers analysed, the number of these observed in the model and the number defined in the Chemical Component Dictionary. Similar counts are reported in the Torsion and Rings columns. '-' means no outliers of that kind were identified.

Mol	Type	Chain	Res	Link	Chirals	Torsions	Rings
3	NAG	F	301	1	-	3/6/23/26	0/1/1/1
3	NAG	B	301	1	-	2/6/23/26	0/1/1/1
3	NAG	J	303	1	-	2/6/23/26	0/1/1/1

Continued on next page...

Continued from previous page...

Mol	Type	Chain	Res	Link	Chirals	Torsions	Rings
3	NAG	G	302	1	-	0/6/23/26	0/1/1/1
4	6GF	E	303	-	-	2/18/18/18	0/4/4/4
4	6GF	E	304	-	-	0/18/18/18	0/4/4/4
4	6GF	F	302	-	-	2/18/18/18	0/4/4/4
4	6GF	C	304	-	-	2/18/18/18	0/4/4/4
3	NAG	I	301	1	-	1/6/23/26	0/1/1/1
4	6GF	I	302	-	-	2/18/18/18	0/4/4/4
4	6GF	J	304	-	-	2/18/18/18	0/4/4/4
4	6GF	H	304	-	-	0/18/18/18	0/4/4/4
3	NAG	C	303	1	-	4/6/23/26	0/1/1/1
4	6GF	C	305	-	-	2/18/18/18	0/4/4/4
4	6GF	A	304	-	-	2/18/18/18	0/4/4/4
3	NAG	A	303	1	-	3/6/23/26	0/1/1/1
3	NAG	H	303	1	-	2/6/23/26	0/1/1/1
3	NAG	E	302	1	-	0/6/23/26	0/1/1/1
3	NAG	D	301	1	-	3/6/23/26	0/1/1/1
4	6GF	F	303	-	-	0/18/18/18	0/4/4/4

All (59) bond length outliers are listed below:

Mol	Chain	Res	Type	Atoms	Z	Observed(Å)	Ideal(Å)
4	A	304	6GF	C12-C13	-6.58	1.40	1.51
4	F	303	6GF	C12-C13	-6.52	1.40	1.51
4	F	302	6GF	C12-C13	-6.50	1.40	1.51
3	C	303	NAG	O5-C1	-6.49	1.33	1.43
4	A	304	6GF	C18-C19	-6.36	1.40	1.51
4	F	302	6GF	C18-C19	-6.31	1.40	1.51
4	C	304	6GF	C18-C19	-6.22	1.40	1.51
4	C	304	6GF	C12-C13	-6.19	1.41	1.51
4	E	304	6GF	C12-C13	-6.18	1.41	1.51
4	H	304	6GF	C12-C13	-6.17	1.41	1.51
4	F	303	6GF	C18-C19	-6.12	1.41	1.51
4	I	302	6GF	C18-C19	-6.06	1.41	1.51
4	H	304	6GF	C18-C19	-6.06	1.41	1.51
4	E	303	6GF	C18-C19	-6.05	1.41	1.51
4	E	304	6GF	C05-C08	-5.94	1.39	1.48
4	J	304	6GF	C12-C13	-5.92	1.41	1.51
4	E	303	6GF	C12-C13	-5.89	1.41	1.51
4	E	304	6GF	C18-C19	-5.85	1.41	1.51
4	J	304	6GF	C18-C19	-5.84	1.41	1.51

Continued on next page...

Continued from previous page...

Mol	Chain	Res	Type	Atoms	Z	Observed(Å)	Ideal(Å)
4	I	302	6GF	C12-C13	-5.83	1.41	1.51
4	C	305	6GF	C05-C08	-5.83	1.39	1.48
4	C	304	6GF	C05-C08	-5.68	1.40	1.48
4	A	304	6GF	C05-C08	-5.56	1.40	1.48
4	F	303	6GF	C05-C08	-5.56	1.40	1.48
4	C	305	6GF	C18-C19	-5.55	1.42	1.51
4	E	303	6GF	C05-C08	-5.45	1.40	1.48
4	F	302	6GF	C05-C08	-5.39	1.40	1.48
4	J	304	6GF	C05-C08	-5.33	1.40	1.48
4	I	302	6GF	C05-C08	-5.25	1.40	1.48
4	C	305	6GF	C12-C13	-5.18	1.42	1.51
4	H	304	6GF	C05-C08	-5.18	1.40	1.48
4	C	305	6GF	C17-N05	3.31	1.41	1.34
4	J	304	6GF	C17-N05	3.23	1.41	1.34
4	H	304	6GF	C17-N05	3.18	1.41	1.34
4	A	304	6GF	C17-N05	3.17	1.41	1.34
4	C	305	6GF	C20-N06	3.12	1.41	1.34
4	I	302	6GF	C17-N05	3.12	1.41	1.34
4	F	302	6GF	C20-N06	3.05	1.41	1.34
4	E	304	6GF	C17-N05	3.04	1.41	1.34
4	F	302	6GF	C17-N05	3.03	1.41	1.34
4	E	304	6GF	C20-N06	3.03	1.41	1.34
4	C	304	6GF	C17-N05	3.02	1.41	1.34
4	F	303	6GF	C17-N05	3.01	1.41	1.34
4	E	303	6GF	C17-N05	3.00	1.40	1.34
4	C	304	6GF	C20-N06	3.00	1.40	1.34
4	A	304	6GF	C20-N06	2.98	1.40	1.34
4	J	304	6GF	C20-N06	2.93	1.40	1.34
4	H	304	6GF	C20-N06	2.77	1.40	1.34
4	F	303	6GF	C20-N06	2.75	1.40	1.34
4	C	304	6GF	C10-N04	-2.66	1.32	1.37
4	I	302	6GF	C20-N06	2.62	1.40	1.34
4	E	303	6GF	C20-N06	2.42	1.39	1.34
3	C	303	NAG	C3-C2	2.28	1.57	1.52
4	C	305	6GF	C12-N04	2.22	1.49	1.46
4	I	302	6GF	C10-N04	-2.17	1.33	1.37
3	D	301	NAG	O5-C1	-2.16	1.40	1.43
4	H	304	6GF	C12-N04	2.15	1.49	1.46
4	E	303	6GF	C12-N04	2.11	1.49	1.46
4	E	304	6GF	C10-N04	-2.02	1.33	1.37

All (124) bond angle outliers are listed below:

Mol	Chain	Res	Type	Atoms	Z	Observed(°)	Ideal(°)
4	H	304	6GF	C08-N01-C09	11.46	122.87	116.34
4	C	304	6GF	C08-N01-C09	10.22	122.17	116.34
4	I	302	6GF	C08-N01-C09	9.69	121.87	116.34
4	J	304	6GF	C08-N01-C09	9.64	121.83	116.34
4	E	303	6GF	C08-N01-C09	9.27	121.62	116.34
4	A	304	6GF	C08-N01-C09	9.21	121.59	116.34
4	F	303	6GF	C08-N01-C09	8.90	121.41	116.34
4	E	304	6GF	C08-N01-C09	7.82	120.80	116.34
4	F	302	6GF	C08-N01-C09	7.81	120.80	116.34
4	C	305	6GF	C08-N01-C09	6.84	120.24	116.34
4	C	305	6GF	C09-N03-C10	6.80	121.55	116.73
4	J	304	6GF	C09-N03-C10	6.73	121.49	116.73
4	A	304	6GF	C09-N03-C10	6.65	121.44	116.73
4	F	302	6GF	C09-N03-C10	6.63	121.42	116.73
4	E	304	6GF	C09-N03-C10	6.61	121.41	116.73
4	I	302	6GF	C09-N03-C10	5.80	120.84	116.73
4	E	303	6GF	C09-N03-C10	5.73	120.79	116.73
4	F	303	6GF	C09-N03-C10	5.71	120.78	116.73
4	C	304	6GF	C09-N03-C10	5.30	120.48	116.73
4	H	304	6GF	C09-N03-C10	4.64	120.02	116.73
3	C	303	NAG	C4-C3-C2	4.23	117.21	111.02
4	J	304	6GF	N03-C09-N01	-3.59	119.79	125.42
4	C	304	6GF	N03-C09-N01	-3.47	119.97	125.42
4	A	304	6GF	N03-C09-N01	-3.45	120.00	125.42
4	H	304	6GF	N03-C09-N01	-3.44	120.03	125.42
4	H	304	6GF	C11-C08-N01	-3.42	118.29	122.35
4	I	302	6GF	N03-C09-N01	-3.35	120.16	125.42
4	E	304	6GF	N03-C09-N01	-3.35	120.17	125.42
4	F	303	6GF	C20-N06-C19	3.34	122.00	117.42
4	H	304	6GF	C20-N06-C19	3.30	121.94	117.42
4	I	302	6GF	C20-N06-C19	3.27	121.90	117.42
4	F	303	6GF	N03-C09-N01	-3.17	120.45	125.42
4	E	303	6GF	C20-N06-C19	3.14	121.72	117.42
4	E	303	6GF	N03-C09-N01	-3.06	120.62	125.42
4	F	302	6GF	N03-C09-N01	-3.01	120.70	125.42
4	J	304	6GF	C20-N06-C19	3.01	121.54	117.42
4	E	304	6GF	C17-N05-C13	2.99	121.52	117.42
4	I	302	6GF	C11-C08-N01	-2.96	118.83	122.35
4	E	303	6GF	C11-C08-N01	-2.95	118.85	122.35
3	C	303	NAG	C1-O5-C5	-2.94	108.20	112.19
4	C	305	6GF	C17-N05-C13	2.93	121.43	117.42
4	C	305	6GF	N03-C09-N01	-2.89	120.88	125.42
4	A	304	6GF	C20-N06-C19	2.85	121.32	117.42

Continued on next page...

Continued from previous page...

Mol	Chain	Res	Type	Atoms	Z	Observed(°)	Ideal(°)
4	C	304	6GF	C20-N06-C19	2.83	121.30	117.42
4	J	304	6GF	C17-N05-C13	2.82	121.28	117.42
4	E	304	6GF	C20-N06-C19	2.79	121.24	117.42
4	C	305	6GF	C20-N06-C19	2.79	121.23	117.42
4	F	303	6GF	C16-C17-N05	-2.78	118.88	123.43
3	A	303	NAG	C1-O5-C5	2.78	115.96	112.19
4	C	304	6GF	C11-C08-N01	-2.78	119.05	122.35
4	F	302	6GF	C08-C11-C10	2.74	118.83	117.03
4	F	303	6GF	C11-C08-N01	-2.69	119.15	122.35
4	F	302	6GF	C11-C08-N01	-2.68	119.17	122.35
4	J	304	6GF	C16-C17-N05	-2.60	119.17	123.43
4	I	302	6GF	C17-N05-C13	2.58	120.95	117.42
4	E	303	6GF	C17-N05-C13	2.57	120.94	117.42
4	H	304	6GF	N02-C09-N03	2.57	121.25	117.25
4	F	302	6GF	C17-N05-C13	2.57	120.94	117.42
4	A	304	6GF	C11-C08-N01	-2.55	119.32	122.35
4	F	303	6GF	C21-C20-N06	-2.54	119.28	123.43
4	E	304	6GF	C18-C19-N06	2.53	122.17	116.28
4	I	302	6GF	C21-C20-N06	-2.52	119.31	123.43
4	C	304	6GF	C17-N05-C13	2.52	120.87	117.42
4	F	302	6GF	C20-N06-C19	2.51	120.86	117.42
4	F	303	6GF	C17-N05-C13	2.50	120.84	117.42
4	H	304	6GF	C17-N05-C13	2.50	120.84	117.42
4	A	304	6GF	C18-C19-N06	2.49	122.08	116.28
4	J	304	6GF	C11-C08-N01	-2.47	119.42	122.35
4	H	304	6GF	C18-C19-N06	2.46	122.00	116.28
4	E	303	6GF	C08-C11-C10	2.44	118.64	117.03
4	J	304	6GF	C21-C20-N06	-2.44	119.44	123.43
4	H	304	6GF	N03-C10-N04	2.43	119.27	116.55
4	A	304	6GF	C13-C12-N04	-2.42	111.12	114.27
4	E	304	6GF	N02-C09-N01	2.42	121.01	117.25
4	H	304	6GF	C21-C20-N06	-2.42	119.48	123.43
4	F	303	6GF	C18-C19-N06	2.39	121.82	116.28
4	E	304	6GF	C05-C08-N01	2.37	119.39	116.02
4	J	304	6GF	C18-C19-N06	2.37	121.78	116.28
4	I	302	6GF	N02-C09-N01	2.36	120.92	117.25
3	F	301	NAG	C1-O5-C5	2.34	115.37	112.19
4	E	303	6GF	C18-C19-N06	2.34	121.72	116.28
4	F	302	6GF	C16-C17-N05	-2.34	119.61	123.43
4	C	304	6GF	N02-C09-N01	2.33	120.88	117.25
4	C	305	6GF	C18-C19-N06	2.33	121.70	116.28
4	C	305	6GF	C08-C11-C10	2.33	118.56	117.03

Continued on next page...

Continued from previous page...

Mol	Chain	Res	Type	Atoms	Z	Observed(°)	Ideal(°)
4	E	303	6GF	C21-C20-N06	-2.33	119.62	123.43
4	C	304	6GF	C18-C19-N06	2.33	121.69	116.28
4	F	302	6GF	C18-C19-N06	2.31	121.66	116.28
4	E	304	6GF	C16-C17-N05	-2.31	119.65	123.43
4	H	304	6GF	C08-C11-C10	2.30	118.54	117.03
4	F	302	6GF	N02-C09-N01	2.29	120.81	117.25
4	E	304	6GF	C23-C19-N06	-2.26	118.92	122.17
4	C	304	6GF	C21-C20-N06	-2.25	119.75	123.43
4	E	303	6GF	C12-C13-N05	2.23	121.46	116.28
4	A	304	6GF	C23-C19-N06	-2.23	118.97	122.17
4	A	304	6GF	C05-C08-N01	2.22	119.18	116.02
3	D	301	NAG	C1-O5-C5	2.22	115.20	112.19
4	F	302	6GF	C21-C20-N06	-2.21	119.82	123.43
4	A	304	6GF	C16-C17-N05	-2.20	119.83	123.43
4	E	304	6GF	C11-C08-N01	-2.17	119.77	122.35
4	I	302	6GF	C14-C13-N05	-2.17	119.05	122.17
4	I	302	6GF	C18-C19-N06	2.16	121.31	116.28
4	C	305	6GF	C21-C20-N06	-2.16	119.90	123.43
4	C	305	6GF	C11-C10-N03	-2.15	118.95	123.15
4	C	305	6GF	C11-C08-N01	-2.15	119.79	122.35
4	I	302	6GF	C05-C08-N01	2.15	119.07	116.02
4	A	304	6GF	C17-N05-C13	2.14	120.36	117.42
4	C	305	6GF	C23-C19-N06	-2.14	119.09	122.17
4	C	305	6GF	C16-C17-N05	-2.13	119.95	123.43
4	F	303	6GF	C05-C08-N01	2.13	119.05	116.02
4	C	305	6GF	C14-C13-N05	-2.12	119.12	122.17
4	H	304	6GF	C23-C19-N06	-2.11	119.13	122.17
4	C	305	6GF	C12-C13-N05	2.10	121.17	116.28
4	F	302	6GF	C11-C10-N03	-2.10	119.07	123.15
4	A	304	6GF	N02-C09-N01	2.09	120.50	117.25
4	C	304	6GF	C16-C17-N05	-2.06	120.06	123.43
4	E	304	6GF	C22-C23-C19	2.06	121.50	118.93
4	H	304	6GF	C16-C17-N05	-2.05	120.07	123.43
4	C	305	6GF	C22-C23-C19	2.05	121.49	118.93
4	E	304	6GF	C21-C20-N06	-2.03	120.11	123.43
4	J	304	6GF	C23-C19-N06	-2.03	119.25	122.17
4	F	303	6GF	C23-C19-N06	-2.03	119.25	122.17
4	I	302	6GF	C12-C13-N05	2.03	120.99	116.28
4	I	302	6GF	C15-C14-C13	2.02	121.45	118.93

There are no chirality outliers.

All (34) torsion outliers are listed below:

Mol	Chain	Res	Type	Atoms
3	J	303	NAG	C4-C5-C6-O6
3	B	301	NAG	O5-C5-C6-O6
3	D	301	NAG	O5-C5-C6-O6
3	A	303	NAG	O5-C5-C6-O6
3	C	303	NAG	C4-C5-C6-O6
3	F	301	NAG	O5-C5-C6-O6
3	A	303	NAG	C4-C5-C6-O6
3	D	301	NAG	C4-C5-C6-O6
3	B	301	NAG	C4-C5-C6-O6
3	C	303	NAG	C8-C7-N2-C2
3	C	303	NAG	O7-C7-N2-C2
3	F	301	NAG	C4-C5-C6-O6
3	J	303	NAG	O5-C5-C6-O6
4	I	302	6GF	C07-C02-O01-C01
3	C	303	NAG	O5-C5-C6-O6
4	I	302	6GF	C03-C02-O01-C01
4	J	304	6GF	C07-C02-O01-C01
4	A	304	6GF	C07-C02-O01-C01
4	F	302	6GF	C07-C02-O01-C01
4	J	304	6GF	C03-C02-O01-C01
4	F	302	6GF	C03-C02-O01-C01
4	A	304	6GF	C03-C02-O01-C01
3	A	303	NAG	C1-C2-N2-C7
4	C	305	6GF	C07-C02-O01-C01
4	C	305	6GF	C03-C02-O01-C01
4	C	304	6GF	C07-C02-O01-C01
4	C	304	6GF	C03-C02-O01-C01
3	H	303	NAG	C4-C5-C6-O6
3	F	301	NAG	C3-C2-N2-C7
3	I	301	NAG	C3-C2-N2-C7
3	H	303	NAG	C3-C2-N2-C7
3	D	301	NAG	C3-C2-N2-C7
4	E	303	6GF	C07-C02-O01-C01
4	E	303	6GF	C03-C02-O01-C01

There are no ring outliers.

10 monomers are involved in 11 short contacts:

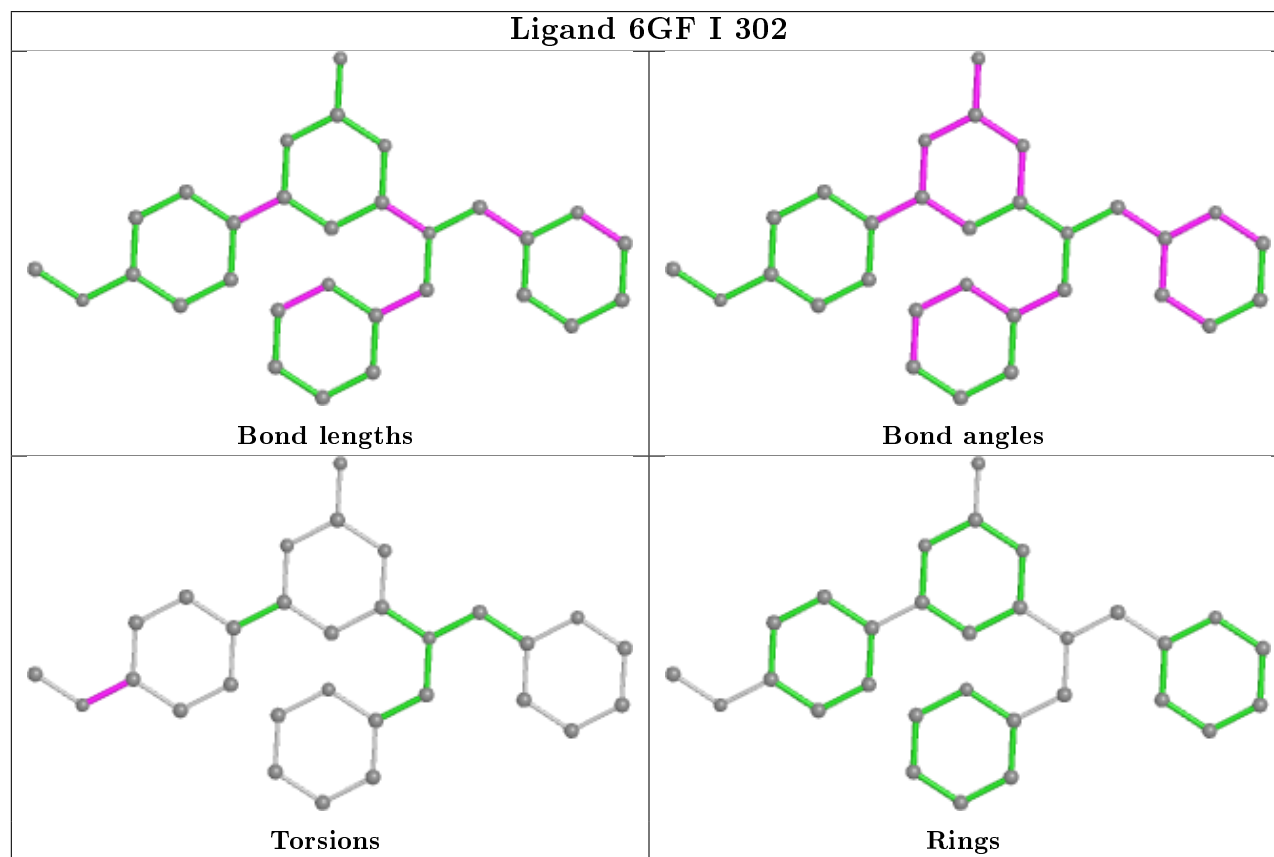
Mol	Chain	Res	Type	Clashes	Symm-Clashes
3	H	303	NAG	1	0
4	F	302	6GF	1	0
4	C	304	6GF	1	0
4	F	303	6GF	1	0

Continued on next page...

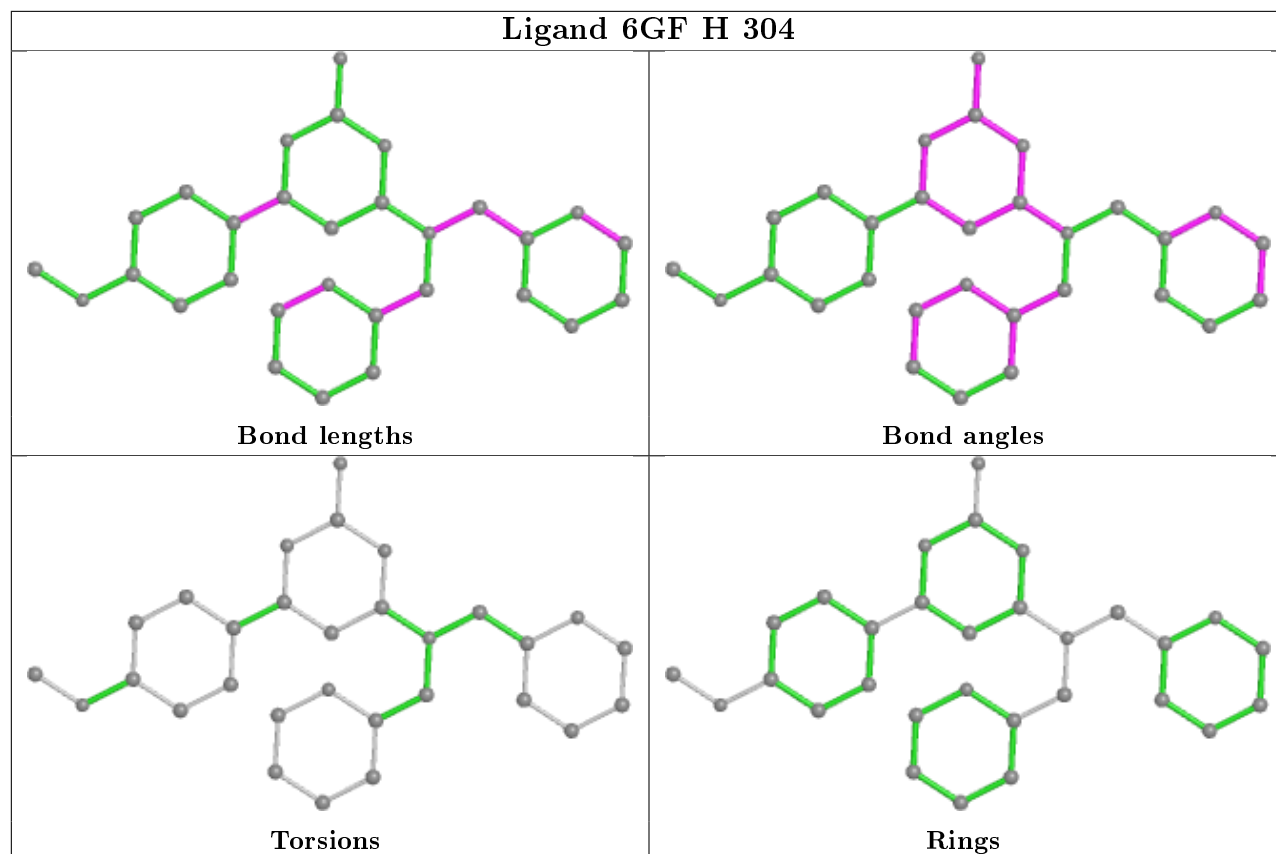
Continued from previous page...

Mol	Chain	Res	Type	Clashes	Symm-Clashes
2	A	302	PO4	1	0
4	J	304	6GF	1	0
4	E	304	6GF	2	0
2	H	302	PO4	1	0
4	E	303	6GF	1	0
2	C	302	PO4	1	0

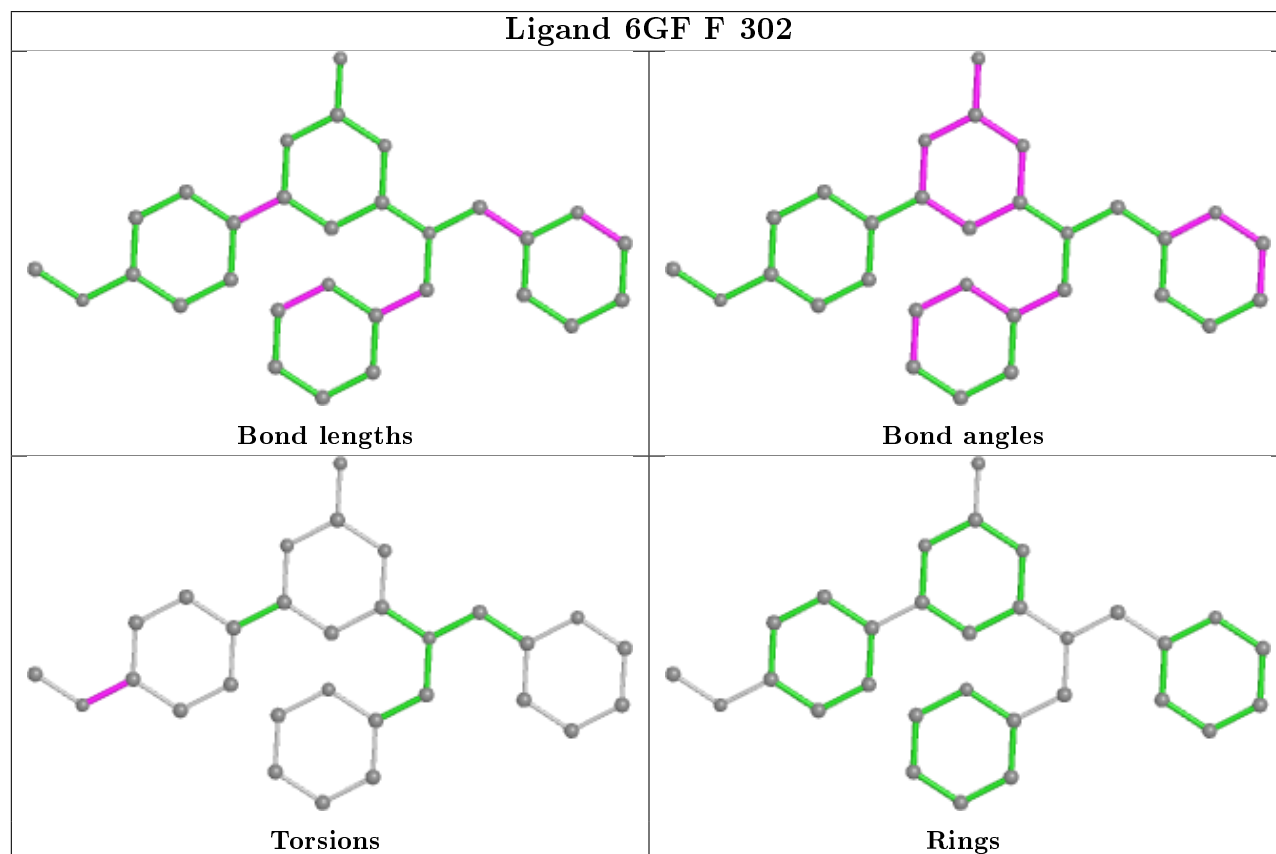
The following is a two-dimensional graphical depiction of Mogul quality analysis of bond lengths, bond angles, torsion angles, and ring geometry for all instances of the Ligand of Interest. In addition, ligands with molecular weight > 250 and outliers as shown on the validation Tables will also be included. For torsion angles, if less than 5% of the Mogul distribution of torsion angles is within 10 degrees of the torsion angle in question, then that torsion angle is considered an outlier. Any bond that is central to one or more torsion angles identified as an outlier by Mogul will be highlighted in the graph. For rings, the root-mean-square deviation (RMSD) between the ring in question and similar rings identified by Mogul is calculated over all ring torsion angles. If the average RMSD is greater than 60 degrees and the minimal RMSD between the ring in question and any Mogul-identified rings is also greater than 60 degrees, then that ring is considered an outlier. The outliers are highlighted in purple. The color gray indicates Mogul did not find sufficient equivalents in the CSD to analyse the geometry.



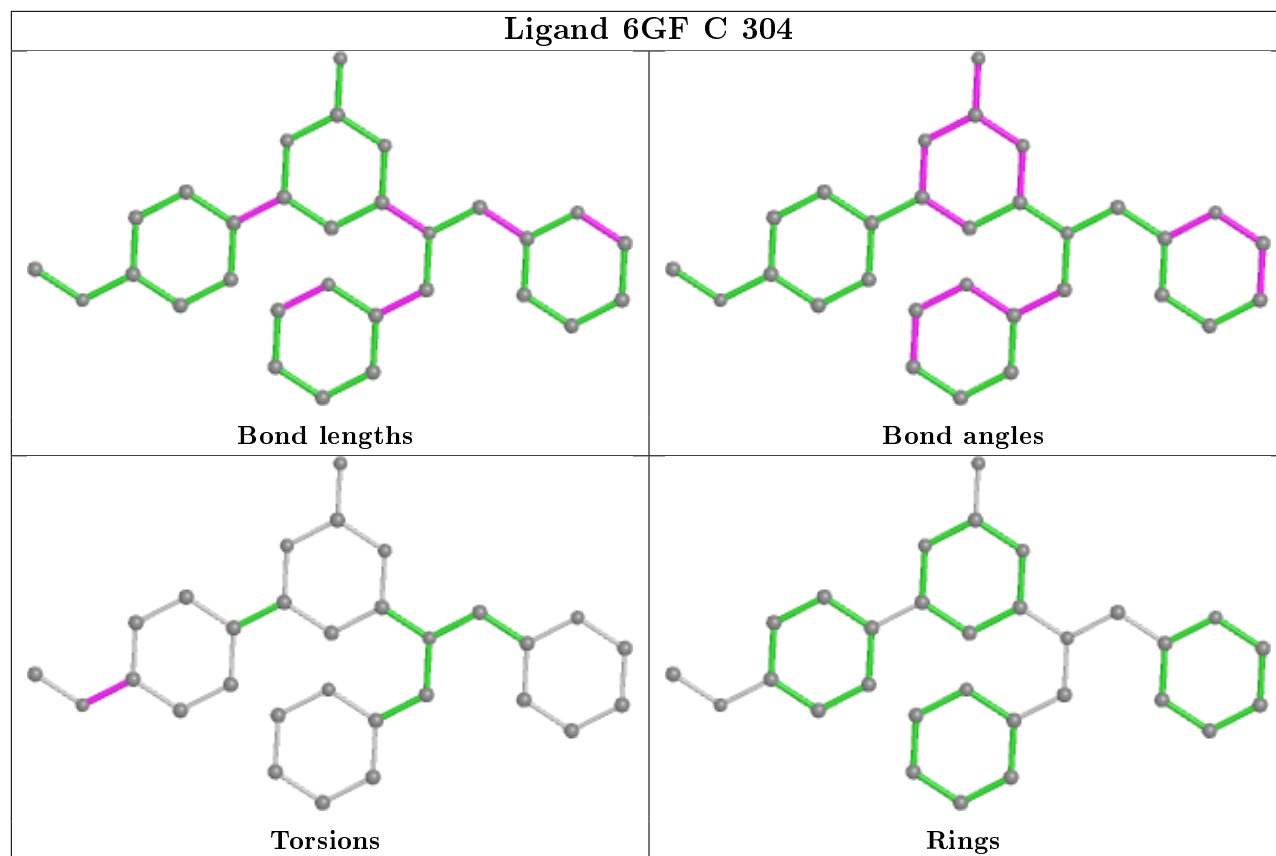
Ligand 6GF H 304



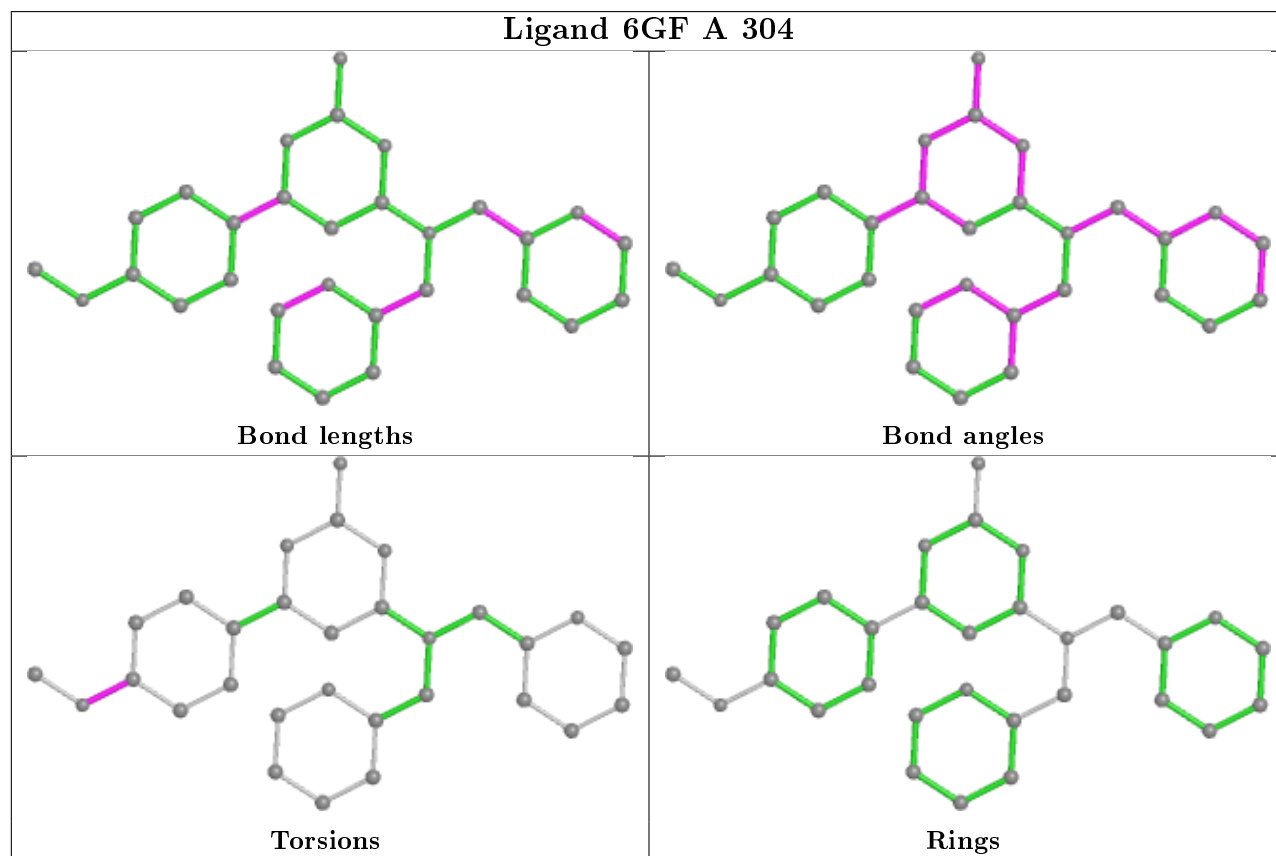
Ligand 6GF F 302



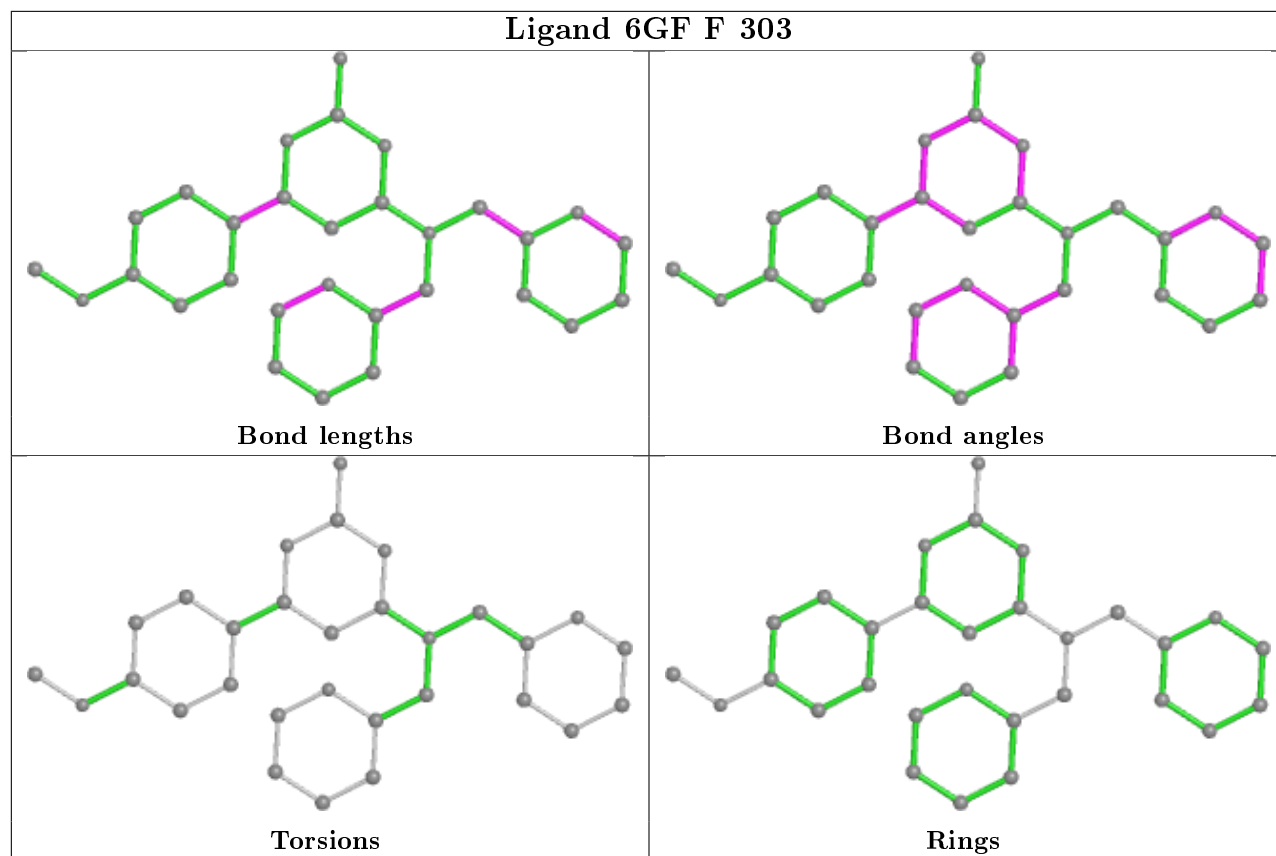
Ligand 6GF C 304



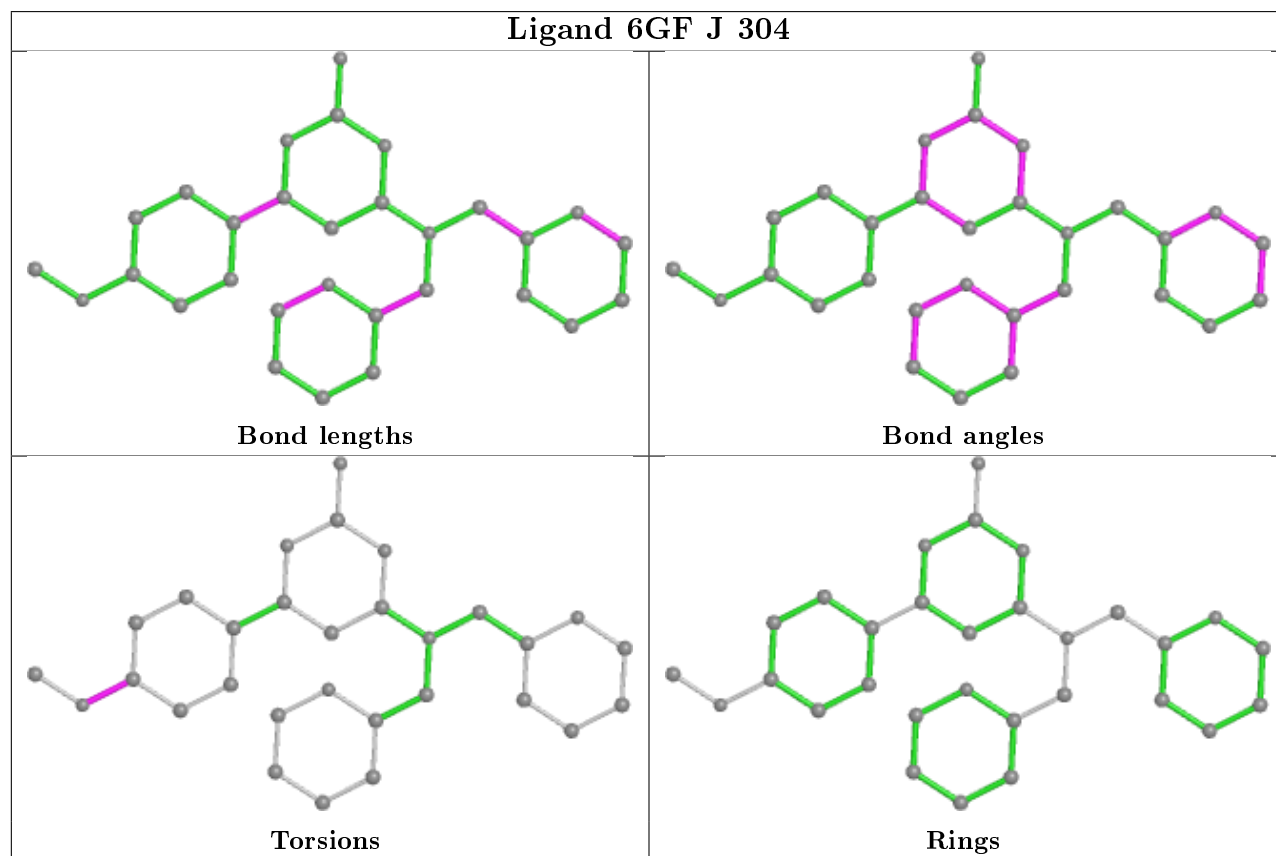
Ligand 6GF A 304



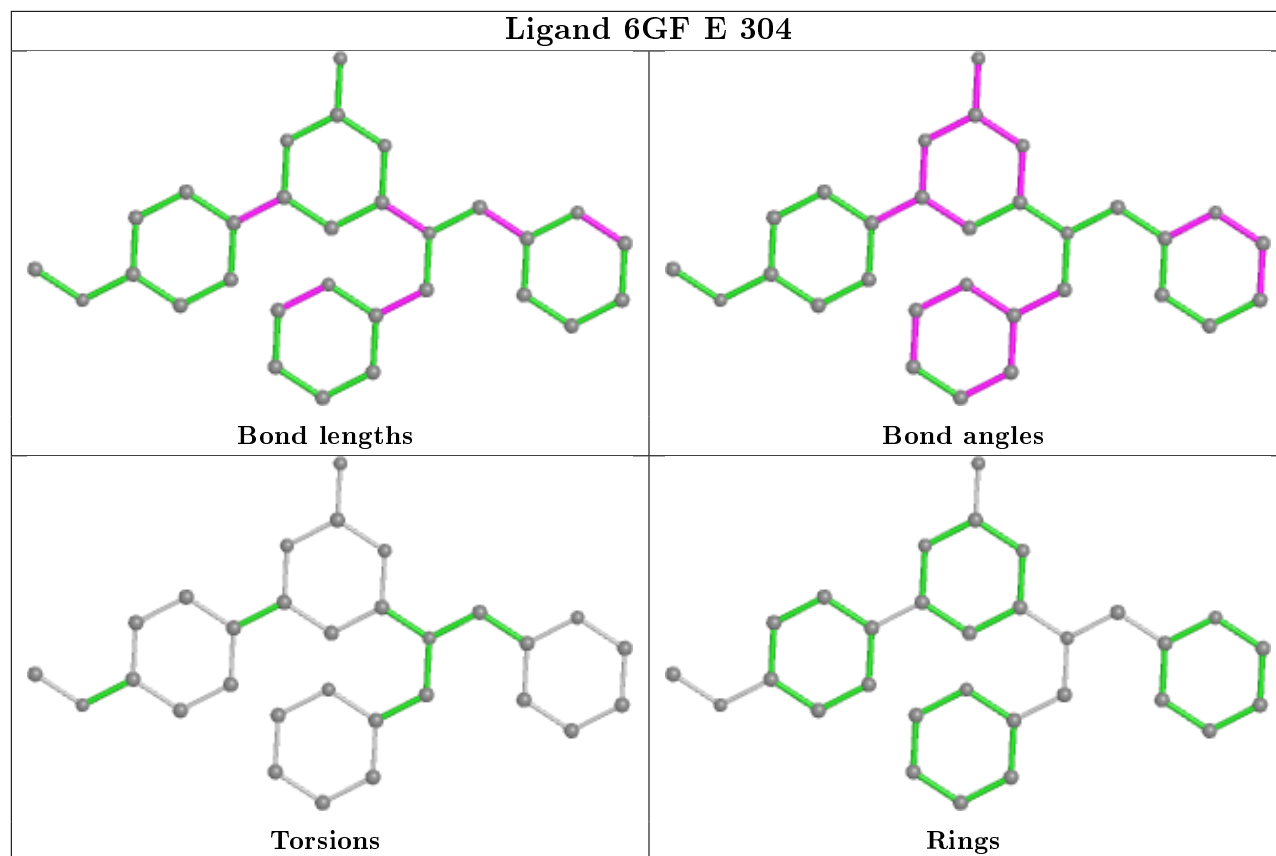
Ligand 6GF F 303



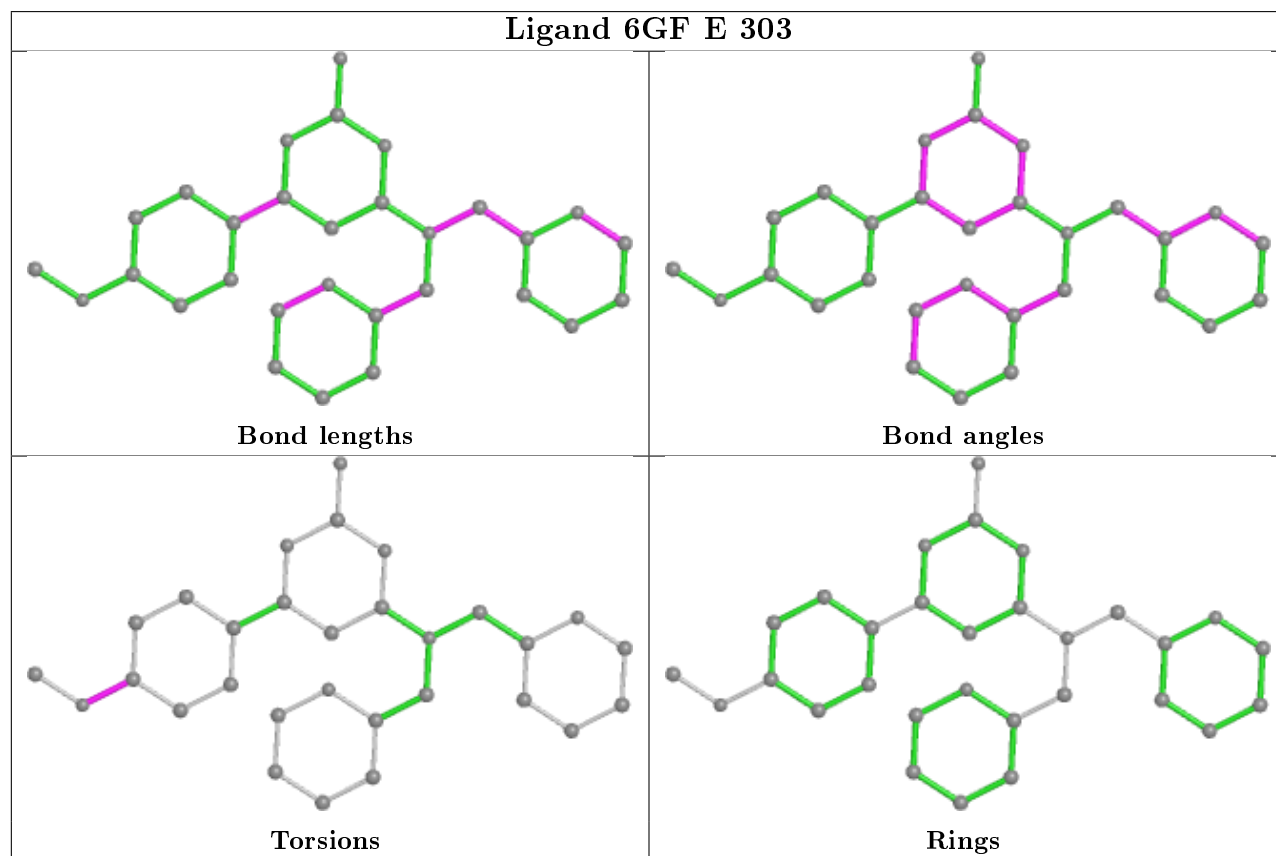
Ligand 6GF J 304

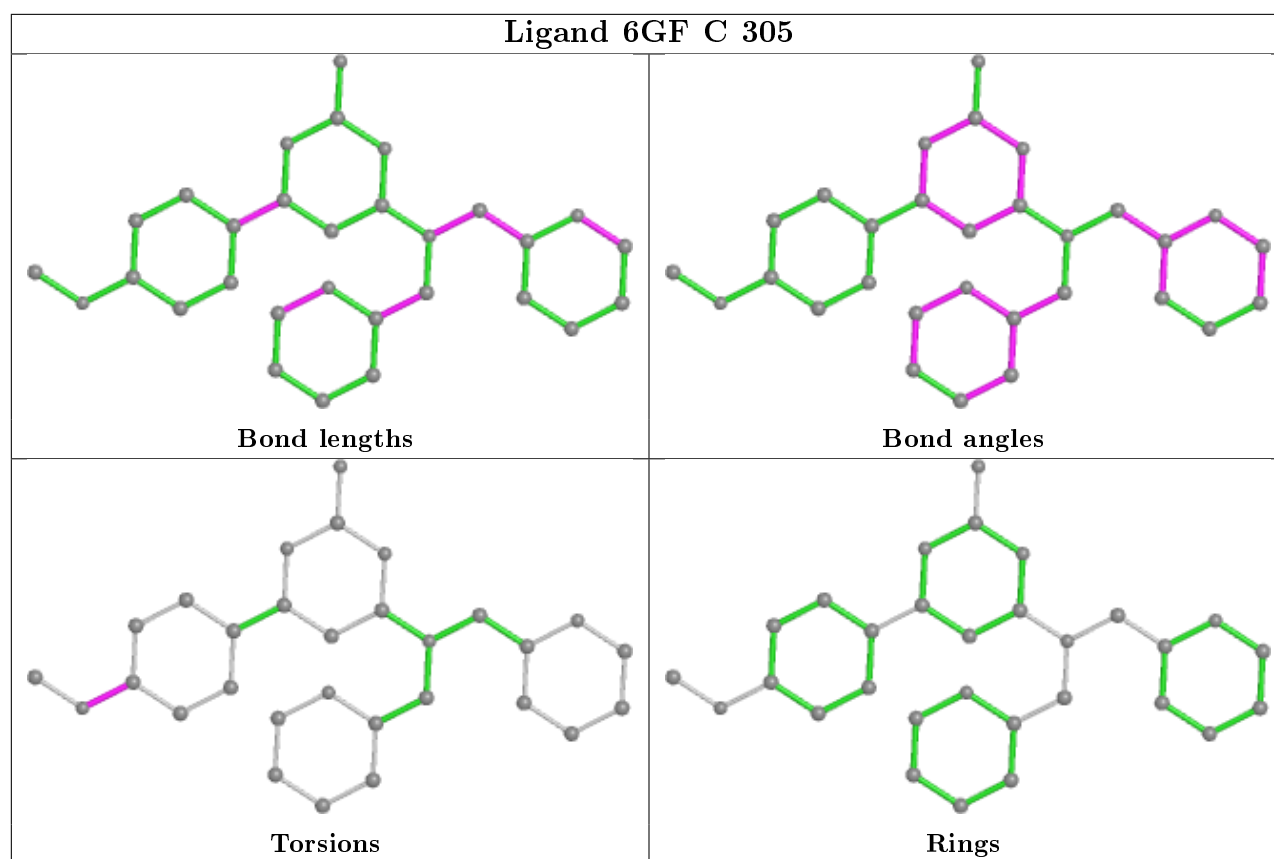


Ligand 6GF E 304



Ligand 6GF E 303





5.7 Other polymers [i](#)

There are no such residues in this entry.

5.8 Polymer linkage issues [i](#)

There are no chain breaks in this entry.

6 Fit of model and data ⓘ

6.1 Protein, DNA and RNA chains ⓘ

In the following table, the column labelled ‘#RSRZ> 2’ contains the number (and percentage) of RSRZ outliers, followed by percent RSRZ outliers for the chain as percentile scores relative to all X-ray entries and entries of similar resolution. The OWAB column contains the minimum, median, 95th percentile and maximum values of the occupancy-weighted average B-factor per residue. The column labelled ‘Q< 0.9’ lists the number of (and percentage) of residues with an average occupancy less than 0.9.

Mol	Chain	Analysed	<RSRZ>	#RSRZ>2	OWAB(Å ²)	Q<0.9
1	A	213/218 (97%)	-0.35	4 (1%) 66 71	15, 24, 43, 69	0
1	B	218/218 (100%)	-0.07	11 (5%) 28 31	16, 27, 53, 74	0
1	C	218/218 (100%)	-0.19	3 (1%) 75 78	16, 26, 48, 68	0
1	D	213/218 (97%)	-0.37	4 (1%) 66 71	15, 22, 40, 62	0
1	E	212/218 (97%)	-0.32	3 (1%) 75 78	14, 23, 47, 63	0
1	F	218/218 (100%)	-0.08	10 (4%) 32 35	16, 26, 53, 66	0
1	G	218/218 (100%)	-0.14	8 (3%) 41 45	14, 26, 49, 68	0
1	H	213/218 (97%)	-0.23	3 (1%) 75 78	14, 24, 44, 68	0
1	I	213/218 (97%)	-0.30	2 (0%) 84 86	13, 22, 46, 65	0
1	J	213/218 (97%)	-0.34	5 (2%) 60 64	13, 22, 42, 69	0
All	All	2149/2180 (98%)	-0.24	53 (2%) 57 61	13, 24, 48, 74	0

All (53) RSRZ outliers are listed below:

Mol	Chain	Res	Type	RSRZ
1	G	158	ASN	6.3
1	H	-6	TYR	6.0
1	J	23	ARG	5.9
1	G	156	THR	5.8
1	B	158	ASN	5.4
1	C	-6	TYR	5.2
1	F	-6	TYR	5.0
1	D	-6	TYR	4.7
1	B	-6	TYR	4.3
1	G	160	ASP	4.2
1	J	-6	TYR	4.2
1	F	156	THR	4.1
1	A	-6	TYR	4.0

Continued on next page...

Continued from previous page...

Mol	Chain	Res	Type	RSRZ
1	B	156	THR	3.8
1	I	-6	TYR	3.8
1	B	157	GLU	3.7
1	G	-6	TYR	3.5
1	F	160	ASP	3.5
1	B	25	ARG	3.4
1	C	23	ARG	3.3
1	A	23	ARG	3.2
1	C	-7	ASP	3.2
1	D	-7	ASP	3.1
1	H	23	ARG	2.9
1	B	23	ARG	2.8
1	B	-5	LYS	2.8
1	A	189	PRO	2.8
1	G	157	GLU	2.7
1	B	189	PRO	2.7
1	F	158	ASN	2.6
1	F	189	PRO	2.6
1	G	159	SER	2.5
1	J	25	ARG	2.5
1	J	43[A]	GLU	2.5
1	E	23	ARG	2.5
1	F	23	ARG	2.4
1	F	161	ASP	2.4
1	F	25	ARG	2.3
1	B	22	GLN	2.3
1	J	189	PRO	2.3
1	D	-5	LYS	2.3
1	B	155	THR	2.3
1	I	205	GLY	2.2
1	H	189	PRO	2.2
1	F	206	ARG	2.2
1	D	23	ARG	2.2
1	A	-7	ASP	2.1
1	G	-7	ASP	2.1
1	E	186	SER	2.1
1	E	189	PRO	2.1
1	G	23	ARG	2.1
1	B	205	GLY	2.0
1	F	-7	ASP	2.0

6.2 Non-standard residues in protein, DNA, RNA chains [i](#)

There are no non-standard protein/DNA/RNA residues in this entry.

6.3 Carbohydrates [i](#)

There are no monosaccharides in this entry.

6.4 Ligands [i](#)

In the following table, the Atoms column lists the number of modelled atoms in the group and the number defined in the chemical component dictionary. The B-factors column lists the minimum, median, 95th percentile and maximum values of B factors of atoms in the group. The column labelled 'Q< 0.9' lists the number of atoms with occupancy less than 0.9.

Mol	Type	Chain	Res	Atoms	RSCC	RSR	B-factors(\AA^2)	Q<0.9
3	NAG	D	301	14/15	0.63	0.33	60,67,71,74	0
3	NAG	A	303	14/15	0.65	0.24	51,62,66,72	0
3	NAG	C	303	14/15	0.69	0.25	55,63,68,71	0
3	NAG	I	301	14/15	0.75	0.28	54,65,73,75	0
3	NAG	G	302	14/15	0.76	0.30	55,60,70,72	0
3	NAG	H	303	14/15	0.77	0.29	57,69,77,79	0
3	NAG	F	301	14/15	0.78	0.21	43,51,60,60	0
3	NAG	J	303	14/15	0.80	0.21	46,62,69,71	0
3	NAG	B	301	14/15	0.81	0.23	52,60,76,78	0
3	NAG	E	302	14/15	0.92	0.15	30,35,43,49	0
4	6GF	A	304	30/30	0.93	0.09	20,29,35,37	0
4	6GF	J	304	30/30	0.94	0.11	17,25,31,31	0
4	6GF	H	304	30/30	0.95	0.09	17,23,29,32	0
4	6GF	E	304	30/30	0.95	0.10	18,26,31,39	0
4	6GF	C	304	30/30	0.95	0.11	20,29,34,35	0
4	6GF	C	305	30/30	0.96	0.09	17,22,28,33	0
4	6GF	F	303	30/30	0.96	0.09	20,28,35,37	0
4	6GF	F	302	30/30	0.96	0.12	18,29,33,36	0
4	6GF	E	303	30/30	0.97	0.09	16,21,26,28	0
4	6GF	I	302	30/30	0.97	0.10	16,21,25,27	0
2	PO4	H	301	5/5	0.98	0.07	16,19,20,24	0
2	PO4	H	302	5/5	0.98	0.08	15,15,17,19	0
2	PO4	J	301	5/5	0.98	0.06	19,19,23,24	0
2	PO4	J	302	5/5	0.99	0.07	15,17,19,19	0
2	PO4	A	301	5/5	0.99	0.08	17,17,18,18	0
2	PO4	C	301	5/5	0.99	0.07	17,20,22,23	0
2	PO4	C	302	5/5	0.99	0.06	16,17,21,21	0

Continued on next page...

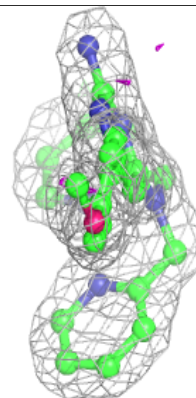
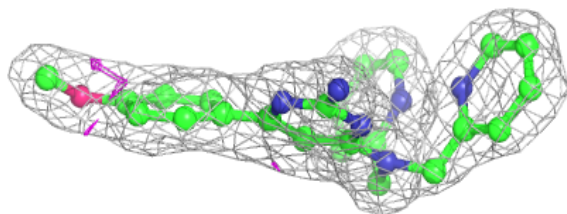
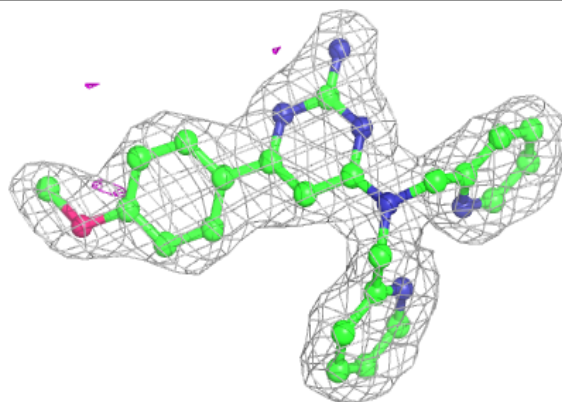
Continued from previous page...

Mol	Type	Chain	Res	Atoms	RSCC	RSR	B-factors(\AA^2)	Q<0.9
2	PO4	E	301	5/5	0.99	0.07	13,14,16,17	0
2	PO4	A	302	5/5	0.99	0.06	19,19,22,23	0
2	PO4	G	301	5/5	1.00	0.06	17,17,20,20	0

The following is a graphical depiction of the model fit to experimental electron density of all instances of the Ligand of Interest. In addition, ligands with molecular weight > 250 and outliers as shown on the geometry validation Tables will also be included. Each fit is shown from different orientation to approximate a three-dimensional view.

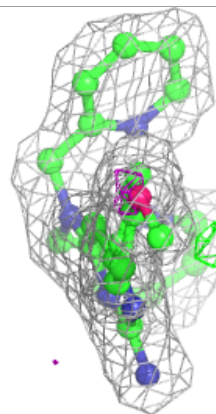
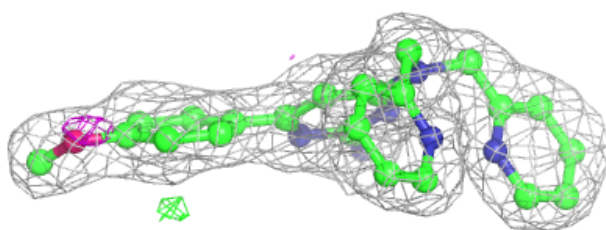
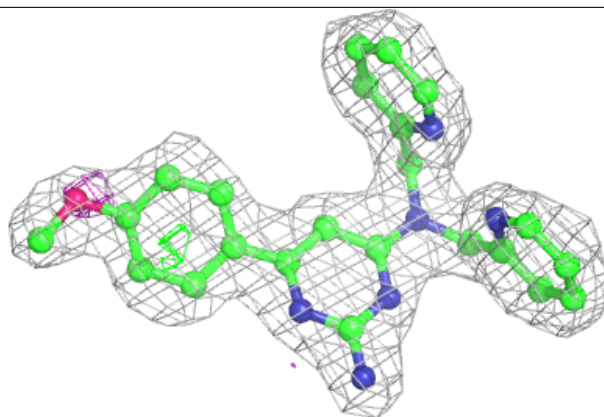
Electron density around 6GF A 304:

2mF_o-DF_c (at 0.7 rmsd) in gray
mF_o-DF_c (at 3 rmsd) in purple (negative)
and green (positive)

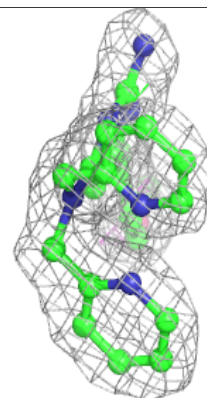
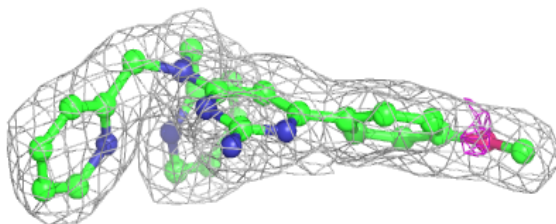
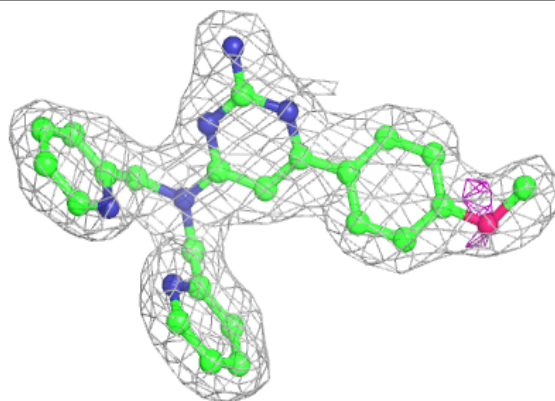


Electron density around 6GF J 304:

$2mF_o-DF_c$ (at 0.7 rmsd) in gray
 mF_o-DF_c (at 3 rmsd) in purple (negative)
and green (positive)

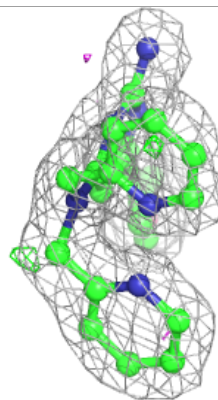
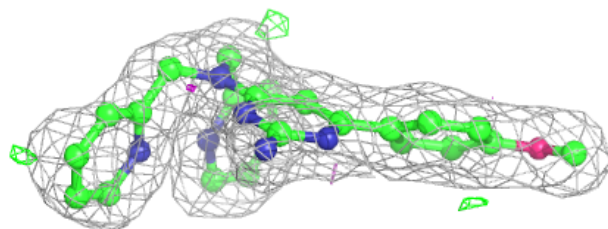
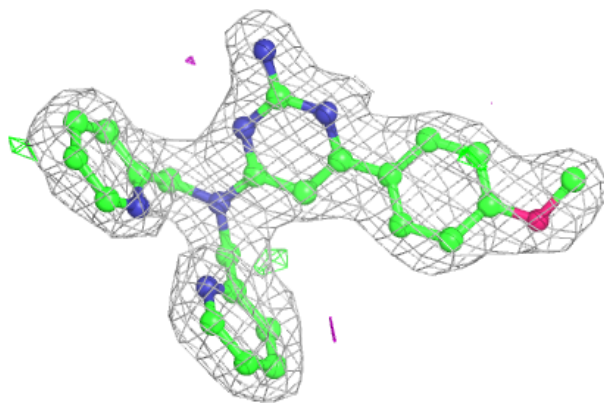
**Electron density around 6GF H 304:**

$2mF_o-DF_c$ (at 0.7 rmsd) in gray
 mF_o-DF_c (at 3 rmsd) in purple (negative)
and green (positive)

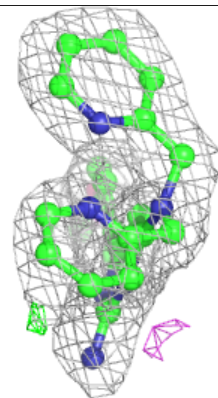
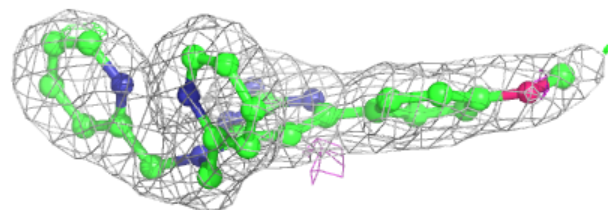
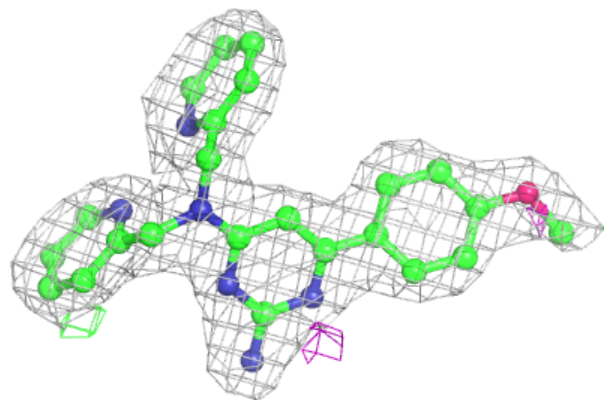


Electron density around 6GF E 304:

$2mF_o-DF_c$ (at 0.7 rmsd) in gray
 mF_o-DF_c (at 3 rmsd) in purple (negative)
and green (positive)

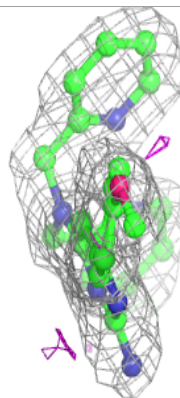
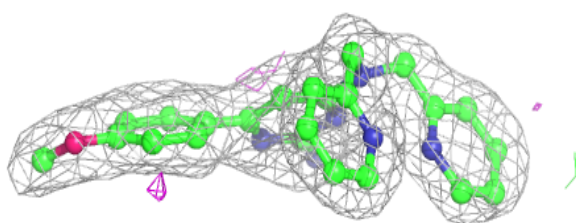
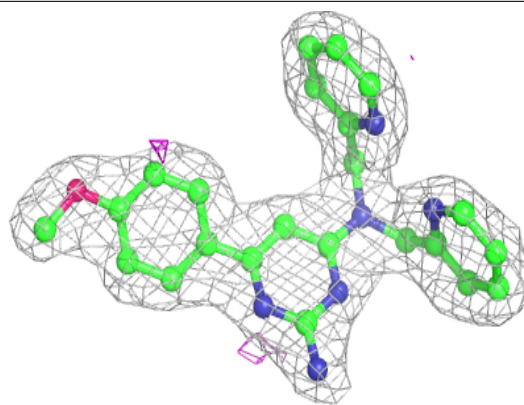
**Electron density around 6GF C 304:**

$2mF_o-DF_c$ (at 0.7 rmsd) in gray
 mF_o-DF_c (at 3 rmsd) in purple (negative)
and green (positive)

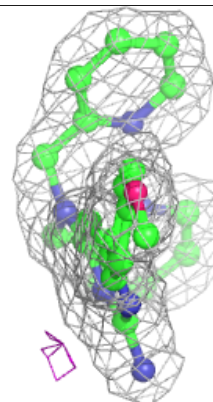
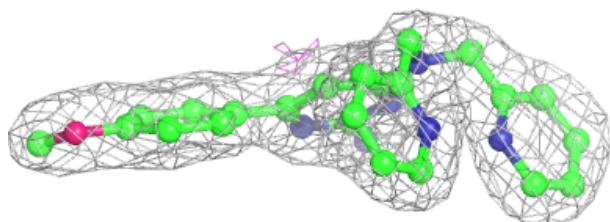
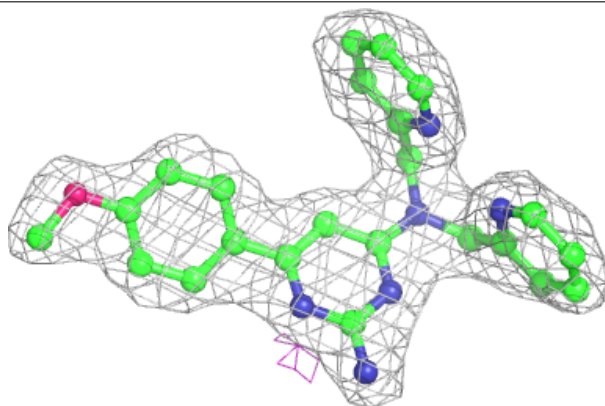


Electron density around 6GF C 305:

$2mF_o-DF_c$ (at 0.7 rmsd) in gray
 mF_o-DF_c (at 3 rmsd) in purple (negative)
and green (positive)

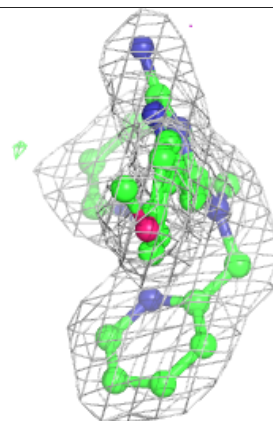
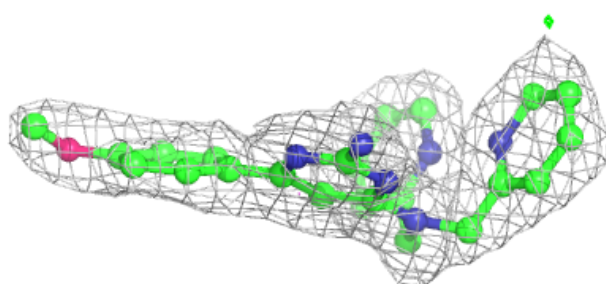
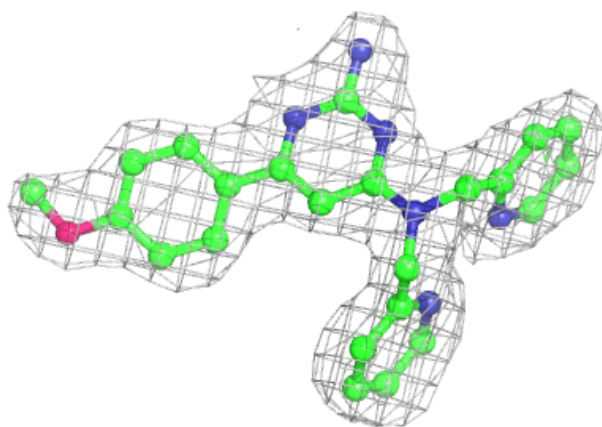
**Electron density around 6GF F 303:**

$2mF_o-DF_c$ (at 0.7 rmsd) in gray
 mF_o-DF_c (at 3 rmsd) in purple (negative)
and green (positive)

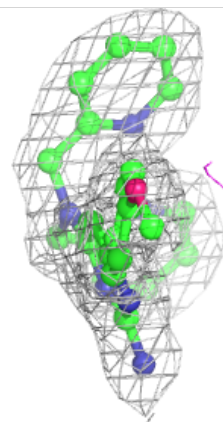
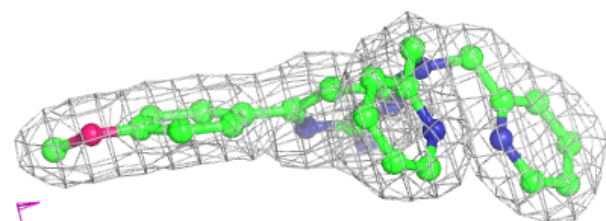
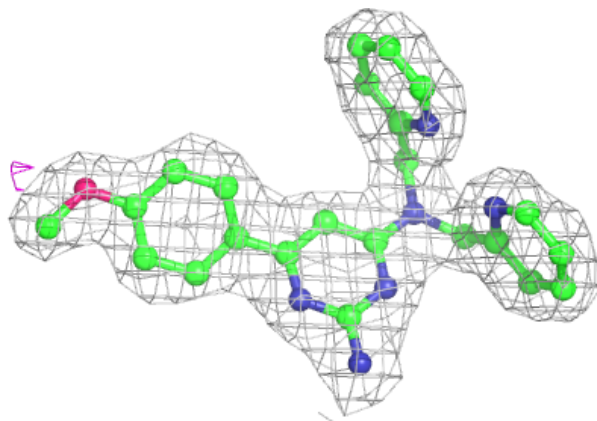


Electron density around 6GF F 302:

$2mF_o - DF_c$ (at 0.7 rmsd) in gray
 $mF_o - DF_c$ (at 3 rmsd) in purple (negative)
and green (positive)

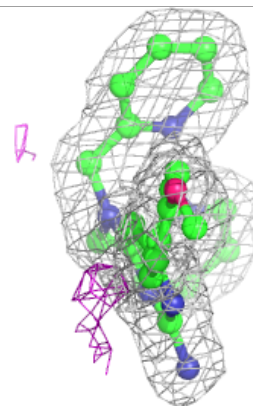
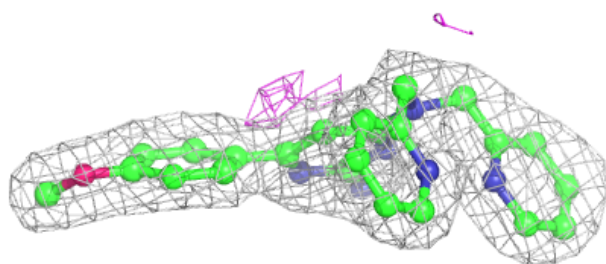
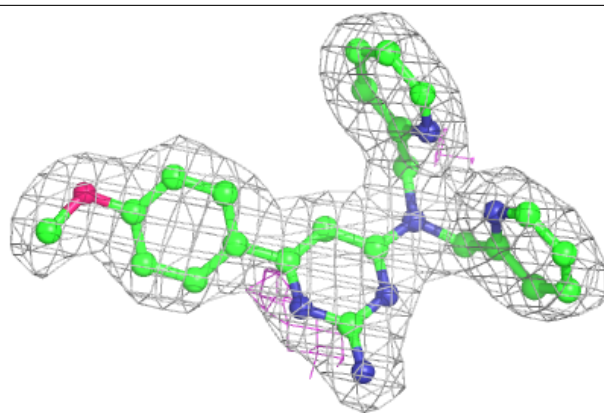
**Electron density around 6GF E 303:**

$2mF_o - DF_c$ (at 0.7 rmsd) in gray
 $mF_o - DF_c$ (at 3 rmsd) in purple (negative)
and green (positive)



Electron density around 6GF I 302:

$2mF_o-DF_c$ (at 0.7 rmsd) in gray
 mF_o-DF_c (at 3 rmsd) in purple (negative)
and green (positive)



6.5 Other polymers [i](#)

There are no such residues in this entry.