



Full wwPDB X-ray Structure Validation Report ⓘ

Aug 10, 2020 – 08:06 AM BST

PDB ID : 6JEM
Title : Structure of Phytolacca americana UGT2 complexed with UDP-2fluoro-glucose and resveratrol
Authors : Maharjan, R.; Fukuda, Y.; Nakayama, T.; Hamada, H.; Ozaki, S.; Inoue, T.
Deposited on : 2019-02-06
Resolution : 2.60 Å(reported)

This is a Full wwPDB X-ray Structure Validation Report for a publicly released PDB entry.

We welcome your comments at validation@mail.wwpdb.org

A user guide is available at

<https://www.wwpdb.org/validation/2017/XrayValidationReportHelp>

with specific help available everywhere you see the ⓘ symbol.

The following versions of software and data (see [references ⓘ](#)) were used in the production of this report:

MolProbity : 4.02b-467
Mogul : 1.8.5 (274361), CSD as541be (2020)
Xtriage (Phenix) : 1.13
EDS : 2.13.1
buster-report : 1.1.7 (2018)
Percentile statistics : 20191225.v01 (using entries in the PDB archive December 25th 2019)
Refmac : 5.8.0158
CCP4 : 7.0.044 (Gargrove)
Ideal geometry (proteins) : Engh & Huber (2001)
Ideal geometry (DNA, RNA) : Parkinson et al. (1996)
Validation Pipeline (wwPDB-VP) : 2.13.1

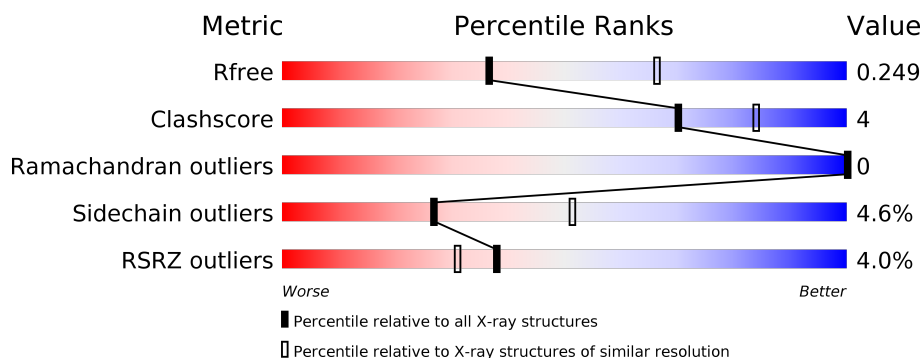
1 Overall quality at a glance

The following experimental techniques were used to determine the structure:

X-RAY DIFFRACTION

The reported resolution of this entry is 2.60 Å.

Percentile scores (ranging between 0-100) for global validation metrics of the entry are shown in the following graphic. The table shows the number of entries on which the scores are based.



Metric	Whole archive (#Entries)	Similar resolution (#Entries, resolution range(Å))
R_{free}	130704	3163 (2.60-2.60)
Clashscore	141614	3518 (2.60-2.60)
Ramachandran outliers	138981	3455 (2.60-2.60)
Sidechain outliers	138945	3455 (2.60-2.60)
RSRZ outliers	127900	3104 (2.60-2.60)

The table below summarises the geometric issues observed across the polymeric chains and their fit to the electron density. The red, orange, yellow and green segments on the lower bar indicate the fraction of residues that contain outliers for ≥ 3 , 2, 1 and 0 types of geometric quality criteria respectively. A grey segment represents the fraction of residues that are not modelled. The numeric value for each fraction is indicated below the corresponding segment, with a dot representing fractions $\leq 5\%$. The upper red bar (where present) indicates the fraction of residues that have poor fit to the electron density. The numeric value is given above the bar.

Mol	Chain	Length	Quality of chain
1	A	489	<div> <div>2%</div> <div> <div></div> <div>80%</div> <div>9%</div> <div>10%</div> </div> </div>
1	B	489	<div> <div>6%</div> <div> <div></div> <div>78%</div> <div>10%</div> <div>11%</div> </div> </div>
1	C	489	<div> <div>3%</div> <div> <div></div> <div>78%</div> <div>11%</div> <div>11%</div> </div> </div>

2 Entry composition

There are 3 unique types of molecules in this entry. The entry contains 10246 atoms, of which 0 are hydrogens and 0 are deuteriums.

In the tables below, the ZeroOcc column contains the number of atoms modelled with zero occupancy, the AltConf column contains the number of residues with at least one atom in alternate conformation and the Trace column contains the number of residues modelled with at most 2 atoms.

- Molecule 1 is a protein called Glycosyltransferase.

Mol	Chain	Residues	Atoms					ZeroOcc	AltConf	Trace
1	A	440	Total	C	N	O	S	0	0	0
			3389	2176	574	627	12			
1	B	433	Total	C	N	O	S	0	0	0
			3334	2143	564	615	12			
1	C	436	Total	C	N	O	S	0	0	0
			3364	2161	569	620	14			

There are 63 discrepancies between the modelled and reference sequences:

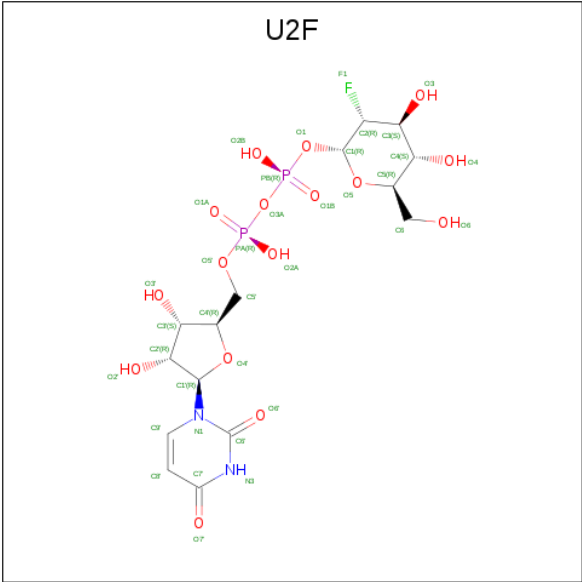
Chain	Residue	Modelled	Actual	Comment	Reference
A	-19	MET	-	initiating methionine	UNP B5MGN7
A	-18	ASN	-	expression tag	UNP B5MGN7
A	-17	HIS	-	expression tag	UNP B5MGN7
A	-16	LYS	-	expression tag	UNP B5MGN7
A	-15	VAL	-	expression tag	UNP B5MGN7
A	-14	HIS	-	expression tag	UNP B5MGN7
A	-13	HIS	-	expression tag	UNP B5MGN7
A	-12	HIS	-	expression tag	UNP B5MGN7
A	-11	HIS	-	expression tag	UNP B5MGN7
A	-10	HIS	-	expression tag	UNP B5MGN7
A	-9	HIS	-	expression tag	UNP B5MGN7
A	-8	LEU	-	expression tag	UNP B5MGN7
A	-7	GLN	-	expression tag	UNP B5MGN7
A	-6	GLU	-	expression tag	UNP B5MGN7
A	-5	ASN	-	expression tag	UNP B5MGN7
A	-4	LEU	-	expression tag	UNP B5MGN7
A	-3	TYR	-	expression tag	UNP B5MGN7
A	-2	PHE	-	expression tag	UNP B5MGN7
A	-1	GLN	-	expression tag	UNP B5MGN7
A	0	GLY	-	expression tag	UNP B5MGN7
A	211	ASN	TYR	See Sequence Details	UNP B5MGN7
B	-19	MET	-	initiating methionine	UNP B5MGN7
B	-18	ASN	-	expression tag	UNP B5MGN7

Continued on next page...

Continued from previous page...

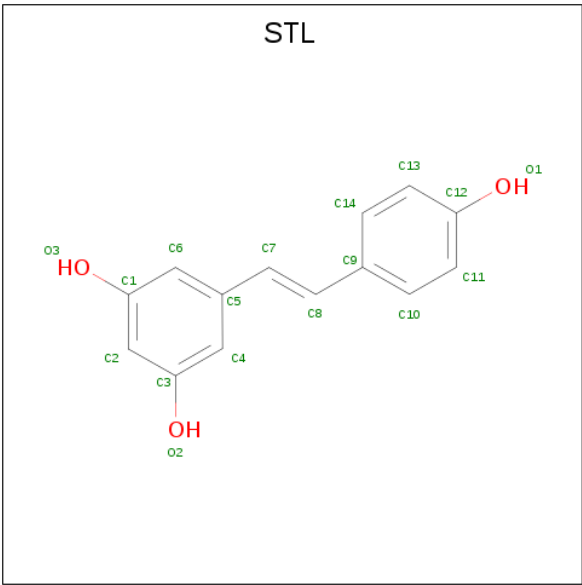
Chain	Residue	Modelled	Actual	Comment	Reference
B	-17	HIS	-	expression tag	UNP B5MGN7
B	-16	LYS	-	expression tag	UNP B5MGN7
B	-15	VAL	-	expression tag	UNP B5MGN7
B	-14	HIS	-	expression tag	UNP B5MGN7
B	-13	HIS	-	expression tag	UNP B5MGN7
B	-12	HIS	-	expression tag	UNP B5MGN7
B	-11	HIS	-	expression tag	UNP B5MGN7
B	-10	HIS	-	expression tag	UNP B5MGN7
B	-9	HIS	-	expression tag	UNP B5MGN7
B	-8	LEU	-	expression tag	UNP B5MGN7
B	-7	GLN	-	expression tag	UNP B5MGN7
B	-6	GLU	-	expression tag	UNP B5MGN7
B	-5	ASN	-	expression tag	UNP B5MGN7
B	-4	LEU	-	expression tag	UNP B5MGN7
B	-3	TYR	-	expression tag	UNP B5MGN7
B	-2	PHE	-	expression tag	UNP B5MGN7
B	-1	GLN	-	expression tag	UNP B5MGN7
B	0	GLY	-	expression tag	UNP B5MGN7
B	211	ASN	TYR	See Sequence Details	UNP B5MGN7
C	-19	MET	-	initiating methionine	UNP B5MGN7
C	-18	ASN	-	expression tag	UNP B5MGN7
C	-17	HIS	-	expression tag	UNP B5MGN7
C	-16	LYS	-	expression tag	UNP B5MGN7
C	-15	VAL	-	expression tag	UNP B5MGN7
C	-14	HIS	-	expression tag	UNP B5MGN7
C	-13	HIS	-	expression tag	UNP B5MGN7
C	-12	HIS	-	expression tag	UNP B5MGN7
C	-11	HIS	-	expression tag	UNP B5MGN7
C	-10	HIS	-	expression tag	UNP B5MGN7
C	-9	HIS	-	expression tag	UNP B5MGN7
C	-8	LEU	-	expression tag	UNP B5MGN7
C	-7	GLN	-	expression tag	UNP B5MGN7
C	-6	GLU	-	expression tag	UNP B5MGN7
C	-5	ASN	-	expression tag	UNP B5MGN7
C	-4	LEU	-	expression tag	UNP B5MGN7
C	-3	TYR	-	expression tag	UNP B5MGN7
C	-2	PHE	-	expression tag	UNP B5MGN7
C	-1	GLN	-	expression tag	UNP B5MGN7
C	0	GLY	-	expression tag	UNP B5MGN7
C	211	ASN	TYR	See Sequence Details	UNP B5MGN7

- Molecule 2 is URIDINE-5'-DIPHOSPHATE-2-DEOXY-2-FLUORO-ALPHA-D-GLUCOSE (three-letter code: U2F) (formula: C₁₅H₂₃FN₂O₁₆P₂).



Mol	Chain	Residues	Atoms						ZeroOcc	AltConf
2	A	1	Total	C	F	N	O	P	0	0
			36	15	1	2	16	2		
2	B	1	Total	C	F	N	O	P	0	0
			36	15	1	2	16	2		
2	C	1	Total	C	F	N	O	P	0	0
			36	15	1	2	16	2		

- Molecule 3 is RESVERATROL (three-letter code: STL) (formula: C₁₄H₁₂O₃).



Mol	Chain	Residues	Atoms			ZeroOcc	AltConf
3	A	1	Total	C	O	0	0
			17	14	3		

Continued on next page...

Continued from previous page...

Mol	Chain	Residues	Atoms			ZeroOcc	AltConf
3	B	1	Total	C	O	0	0
			17	14	3		
3	C	1	Total	C	O	0	0
			17	14	3		

These plots are drawn for all protein, RNA, DNA and oligosaccharide chains in the entry. The first graphic for a chain summarises the proportions of the various outlier classes displayed in the second graphic. The second graphic shows the sequence view annotated by issues in geometry and electron density. Residues are color-coded according to the number of geometric quality criteria for which they contain at least one outlier: green = 0, yellow = 1, orange = 2 and red = 3 or more. A red dot above a residue indicates a poor fit to the electron density ($RSRZ > 2$). Stretches of 2 or more consecutive residues without any outlier are shown as a green connector. Residues present in the sample, but not in the model, are shown in grey.

Chain A:

2% 80% 9% 10%

MET ASN HIS LYS VAL HIS HIS HIS HIS HIS LEU GLN GLU ASN LEU TVR PHE GLN GLY MET GLU MET MET GLU AS I10 H34 F35 S36 L39 T44 A45 Q46 P47 T48 K49 A50 K73 H74 L75 P76 ASP GLY V79 A80 H81 I85 Q108 Y122 P132 L149 P150 D162 M163 P164 E165 V173 L196 V203 N230 D246 D247 D248 SER HIS GLY S252 D253 F268 L285 R295 R301 S302 P303 ASN A3P HIS SER SER PHE GLY SER PHE PHE THR GLN SER GLN ASP P321 F322 L325 K334 D335 R336 Q346 V372 I378 V381 Q385 G396 S406 Q407 R408 I416 L423 R437 K463 K464 S465 Q466 CYS LYS SER

Chain B:

6% 78% 10% 11%

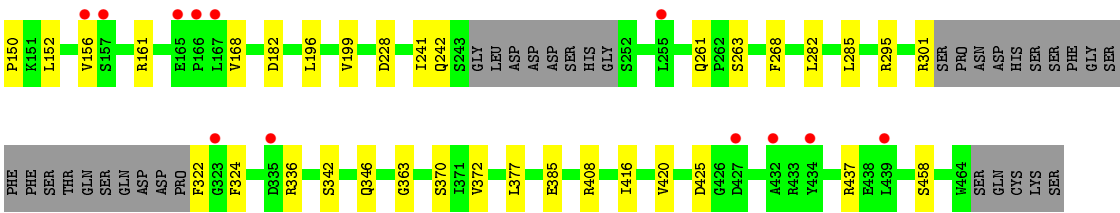
1.5
1.0
0.5
0

1 2 3 4 5 6 7 8 9 10 11 12 13 14 15 16 17 18 19 20 21 22 23 24 25 26 27 28 29 30 31 32 33 34 35 36 37 38 39 40 41 42 43 44 45 46 47 48 49 50 51 52 53 54 55 56 57 58 59 60 61 62 63 64 65 66 67 68 69 70 71 72 73 74 75 76 77 78 79 80 81 82 83 84 85 86 87 88 89 90 91 92 93 94 95 96 97 98 99 100

GLN ASP ASP PRO F322 G323 F324 I325 F326 T327 G328 F329 T333 K334 D335 R336 H352 G353 S354 T355 S370 I371 V372 I377 I378 E385 A400 L401 R402 Q407 T416 V420 K421 E422 L423 M424 D425 G426 D427 E428 G429 R430 K431 A443 T447 W464 S465 F466

Chain C:

Amino Acid	Percentage
MET	1%
ASN	1%
HIS	1%
LYS	1%
VAL	1%
HIS	1%
HIS	1%
HIS	1%
HIS	1%
HIS	1%
LEU	1%
GLN	1%
GLU	1%
ASN	1%
LEU	1%
THR	1%
PHE	1%
GLN	1%
GLY	1%
M1	1%
I10	1%
P14	1%
I20	1%
P21	1%
F35	1%
S36	1%
L39	1%
T48	1%
K49	1%
A50	1%
V70	1%
R74	1%
L75	1%
P76	1%
D77	1%
H81	1%
I85	1%
R87	1%
L100	1%
Q106	1%
A107	1%
Q108	1%
R126	1%
I140	1%



4 Data and refinement statistics

Property	Value	Source
Space group	P 21 21 21	Depositor
Cell constants a, b, c, α , β , γ	57.37Å 137.62Å 208.96Å 90.00° 90.00° 90.00°	Depositor
Resolution (Å)	44.85 – 2.60 44.81 – 2.60	Depositor EDS
% Data completeness (in resolution range)	98.8 (44.85-2.60) 98.9 (44.81-2.60)	Depositor EDS
R_{merge}	0.09	Depositor
R_{sym}	(Not available)	Depositor
$\langle I/\sigma(I) \rangle$ ¹	1.90 (at 2.61Å)	Xtriage
Refinement program	REFMAC 5.8.0238	Depositor
R, R_{free}	0.193 , 0.252 0.195 , 0.249	Depositor DCC
R_{free} test set	2598 reflections (5.04%)	wwPDB-VP
Wilson B-factor (Å ²)	68.6	Xtriage
Anisotropy	0.022	Xtriage
Bulk solvent k_{sol} (e/Å ³), B_{sol} (Å ²)	0.32 , 46.6	EDS
L-test for twinning ²	$\langle L \rangle = 0.49$, $\langle L^2 \rangle = 0.32$	Xtriage
Estimated twinning fraction	No twinning to report.	Xtriage
F_o, F_c correlation	0.96	EDS
Total number of atoms	10246	wwPDB-VP
Average B, all atoms (Å ²)	81.0	wwPDB-VP

Xtriage's analysis on translational NCS is as follows: *The largest off-origin peak in the Patterson function is 3.12% of the height of the origin peak. No significant pseudotranslation is detected.*

¹Intensities estimated from amplitudes.

²Theoretical values of $\langle |L| \rangle$, $\langle L^2 \rangle$ for acentric reflections are 0.5, 0.333 respectively for untwinned datasets, and 0.375, 0.2 for perfectly twinned datasets.

5 Model quality

5.1 Standard geometry

Bond lengths and bond angles in the following residue types are not validated in this section: STL, U2F

The Z score for a bond length (or angle) is the number of standard deviations the observed value is removed from the expected value. A bond length (or angle) with $|Z| > 5$ is considered an outlier worth inspection. RMSZ is the root-mean-square of all Z scores of the bond lengths (or angles).

Mol	Chain	Bond lengths		Bond angles	
		RMSZ	# $ Z > 5$	RMSZ	# $ Z > 5$
1	A	0.74	0/3471	0.87	0/4732
1	B	0.69	0/3415	0.82	0/4657
1	C	0.72	0/3445	0.85	0/4695
All	All	0.72	0/10331	0.85	0/14084

There are no bond length outliers.

There are no bond angle outliers.

There are no chirality outliers.

There are no planarity outliers.

5.2 Too-close contacts

In the following table, the Non-H and H(model) columns list the number of non-hydrogen atoms and hydrogen atoms in the chain respectively. The H(added) column lists the number of hydrogen atoms added and optimized by MolProbity. The Clashes column lists the number of clashes within the asymmetric unit, whereas Symm-Clashes lists symmetry related clashes.

Mol	Chain	Non-H	H(model)	H(added)	Clashes	Symm-Clashes
1	A	3389	0	3414	21	0
1	B	3334	0	3363	28	0
1	C	3364	0	3396	24	0
2	A	36	0	21	1	0
2	B	36	0	21	1	0
2	C	36	0	21	2	0
3	A	17	0	9	0	0
3	B	17	0	9	0	0
3	C	17	0	9	0	0
All	All	10246	0	10263	74	0

The all-atom clashscore is defined as the number of clashes found per 1000 atoms (including hydrogen atoms). The all-atom clashscore for this structure is 4.

All (74) close contacts within the same asymmetric unit are listed below, sorted by their clash magnitude.

Atom-1	Atom-2	Interatomic distance (Å)	Clash overlap (Å)
1:B:443:ALA:O	1:B:447:THR:HG22	1.82	0.79
1:B:110:VAL:HG21	1:B:464:TRP:O	1.91	0.71
1:C:152:LEU:O	1:C:156:VAL:HG22	1.93	0.68
1:B:266:VAL:HG12	1:B:354:SER:O	1.96	0.66
1:B:385:GLU:HG2	1:B:385:GLU:O	1.98	0.63
1:A:203:VAL:HG13	1:A:230:ASN:O	1.99	0.62
1:A:253:ASP:OD1	1:A:253:ASP:N	2.34	0.61
1:C:261:GLN:HG3	1:C:295:ARG:HD3	1.84	0.60
1:C:10:ILE:HB	1:C:39:LEU:HD23	1.84	0.59
1:B:242:GLN:OE1	2:B:501:U2F:O3'	2.21	0.59
1:B:181:VAL:HG12	1:B:385:GLU:HB2	1.86	0.58
1:B:283:ASN:OD1	1:B:326:PRO:HD3	2.04	0.57
1:B:165:GLU:N	1:B:165:GLU:OE2	2.38	0.56
1:A:285:LEU:HA	1:A:416:ILE:HD13	1.87	0.56
1:B:352:HIS:O	1:B:355:THR:OG1	2.22	0.55
1:C:241:ILE:HG22	1:C:242:GLN:O	2.07	0.55
1:C:285:LEU:HA	1:C:416:ILE:HD13	1.88	0.55
1:C:282:LEU:HB3	1:C:324:PHE:CE1	2.43	0.54
1:C:168:VAL:HG23	1:C:168:VAL:O	2.09	0.53
1:A:322:PHE:HB3	1:A:325:LEU:HD12	1.90	0.53
1:A:10:ILE:HB	1:A:39:LEU:HD23	1.91	0.53
1:B:258:LEU:CD2	1:B:266:VAL:HG11	2.40	0.52
1:A:248:ASP:HB3	1:A:252:SER:HB2	1.93	0.51
1:C:126:ARG:HH11	1:C:126:ARG:HG2	1.75	0.51
1:A:162:ASP:O	1:A:164:PRO:HD3	2.11	0.51
1:A:301:ARG:HH21	1:A:301:ARG:HG2	1.76	0.50
1:A:173:VAL:HG11	1:A:396:GLY:CA	2.41	0.50
1:B:282:LEU:HB3	1:B:324:PHE:CE1	2.46	0.50
1:C:70:VAL:CG2	1:C:75:LEU:HD11	2.42	0.50
1:B:285:LEU:HA	1:B:416:ILE:HD13	1.94	0.49
1:C:363:GLY:HA2	2:C:501:U2F:HC	1.93	0.49
1:B:10:ILE:HB	1:B:39:LEU:HD23	1.93	0.49
1:C:70:VAL:HG23	1:C:75:LEU:HD11	1.94	0.49
1:A:301:ARG:NH2	1:A:301:ARG:HG2	2.26	0.49
1:C:385:GLU:OE1	2:C:501:U2F:O3	2.22	0.49
1:A:48:THR:HG22	1:A:50:ALA:H	1.78	0.48
1:B:126:ARG:HG3	1:B:126:ARG:HH11	1.79	0.47

Continued on next page...

Continued from previous page...

Atom-1	Atom-2	Interatomic distance (Å)	Clash overlap (Å)
1:B:122:TYR:CD1	1:B:132:PRO:HB2	2.49	0.46
1:C:100:LEU:HA	1:C:100:LEU:HD12	1.77	0.46
1:B:295:ARG:HA	1:B:336:ARG:O	2.16	0.46
1:C:416:ILE:O	1:C:420:VAL:HG23	2.16	0.46
1:C:241:ILE:CD1	1:C:372:VAL:HG21	2.45	0.45
1:B:266:VAL:HG13	1:B:355:THR:HA	1.99	0.45
1:A:122:TYR:CD1	1:A:132:PRO:HB2	2.51	0.44
1:B:261:GLN:OE1	1:B:295:ARG:NE	2.51	0.44
1:A:391:VAL:HG13	1:A:395:GLN:HG3	1.99	0.43
1:C:268:PHE:CE2	1:C:346:GLN:HG3	2.54	0.43
1:B:377:LEU:CD1	1:B:400:ALA:HB2	2.48	0.43
1:A:196:LEU:HD23	1:A:196:LEU:HA	1.91	0.43
1:A:165:GLU:OE1	1:A:165:GLU:N	2.52	0.42
1:C:48:THR:HG22	1:C:50:ALA:H	1.83	0.42
1:B:100:LEU:HD12	1:B:100:LEU:HA	1.84	0.42
1:B:266:VAL:HG12	1:B:354:SER:C	2.40	0.42
1:A:149:LEU:N	1:A:150:PRO:CD	2.82	0.42
1:A:81:HIS:O	1:A:85:ILE:HG12	2.19	0.42
1:B:266:VAL:CG1	1:B:355:THR:HA	2.49	0.42
1:C:149:LEU:N	1:C:150:PRO:CD	2.83	0.42
1:A:295:ARG:HA	1:A:336:ARG:O	2.20	0.42
1:C:241:ILE:HD12	1:C:372:VAL:HG21	2.02	0.42
1:A:378:ILE:HG13	1:A:423:LEU:HD22	2.01	0.42
1:B:416:ILE:O	1:B:420:VAL:HG23	2.20	0.42
1:C:295:ARG:HA	1:C:336:ARG:O	2.19	0.42
1:B:28:VAL:HG13	1:B:32:ARG:HD3	2.02	0.41
1:B:377:LEU:O	1:B:400:ALA:HA	2.20	0.41
1:C:81:HIS:O	1:C:85:ILE:HG12	2.20	0.41
1:A:268:PHE:CE2	1:A:346:GLN:HG3	2.56	0.41
1:C:14:PRO:HD2	1:C:85:ILE:HG23	2.02	0.41
1:B:431:LYS:HB2	1:B:431:LYS:HE3	1.73	0.41
1:A:79:VAL:HB	1:A:80:ALA:H	1.78	0.41
2:A:501:U2F:O1B	2:A:501:U2F:F1	2.28	0.40
1:B:329:PHE:CZ	1:B:333:ILE:HD13	2.56	0.40
1:B:378:ILE:HG13	1:B:423:LEU:HD22	2.03	0.40
1:C:196:LEU:HA	1:C:199:VAL:HG22	2.04	0.40
1:C:20:ILE:HB	1:C:21:PRO:HD3	2.03	0.40

There are no symmetry-related clashes.

5.3 Torsion angles

5.3.1 Protein backbone

In the following table, the Percentiles column shows the percent Ramachandran outliers of the chain as a percentile score with respect to all X-ray entries followed by that with respect to entries of similar resolution.

The Analysed column shows the number of residues for which the backbone conformation was analysed, and the total number of residues.

Mol	Chain	Analysed	Favoured	Allowed	Outliers	Percentiles	
1	A	432/489 (88%)	419 (97%)	13 (3%)	0	100	100
1	B	427/489 (87%)	415 (97%)	12 (3%)	0	100	100
1	C	430/489 (88%)	420 (98%)	10 (2%)	0	100	100
All	All	1289/1467 (88%)	1254 (97%)	35 (3%)	0	100	100

There are no Ramachandran outliers to report.

5.3.2 Protein sidechains

In the following table, the Percentiles column shows the percent sidechain outliers of the chain as a percentile score with respect to all X-ray entries followed by that with respect to entries of similar resolution.

The Analysed column shows the number of residues for which the sidechain conformation was analysed, and the total number of residues.

Mol	Chain	Analysed	Rotameric	Outliers	Percentiles	
1	A	380/425 (89%)	366 (96%)	14 (4%)	34	60
1	B	373/425 (88%)	355 (95%)	18 (5%)	25	49
1	C	376/425 (88%)	356 (95%)	20 (5%)	22	45
All	All	1129/1275 (88%)	1077 (95%)	52 (5%)	27	51

All (52) residues with a non-rotameric sidechain are listed below:

Mol	Chain	Res	Type
1	A	36	SER
1	A	44	THR
1	A	46	GLN
1	A	79	VAL
1	A	108	GLN

Continued on next page...

Continued from previous page...

Mol	Chain	Res	Type
1	A	246	ASP
1	A	253	ASP
1	A	334	LYS
1	A	372	VAL
1	A	395	GLN
1	A	408	ARG
1	A	437	ARG
1	A	463	LYS
1	A	465	SER
1	B	44	THR
1	B	54	LEU
1	B	65	ASN
1	B	161	ARG
1	B	252	SER
1	B	253	ASP
1	B	256	LYS
1	B	260	ARG
1	B	291	ILE
1	B	334	LYS
1	B	336	ARG
1	B	370	SER
1	B	372	VAL
1	B	377	LEU
1	B	402	ARG
1	B	421	LYS
1	B	431	LYS
1	B	465	SER
1	C	36	SER
1	C	74	HIS
1	C	75	LEU
1	C	77	ASP
1	C	97	ARG
1	C	106	GLN
1	C	108	GLN
1	C	161	ARG
1	C	182	ASP
1	C	228	ASP
1	C	263	SER
1	C	301	ARG
1	C	322	PHE
1	C	342	SER
1	C	370	SER

Continued on next page...

Continued from previous page...

Mol	Chain	Res	Type
1	C	377	LEU
1	C	408	ARG
1	C	425	ASP
1	C	437	ARG
1	C	458	SER

Some sidechains can be flipped to improve hydrogen bonding and reduce clashes. All (2) such sidechains are listed below:

Mol	Chain	Res	Type
1	A	105	GLN
1	B	65	ASN

5.3.3 RNA ⓘ

There are no RNA molecules in this entry.

5.4 Non-standard residues in protein, DNA, RNA chains ⓘ

There are no non-standard protein/DNA/RNA residues in this entry.

5.5 Carbohydrates ⓘ

There are no monosaccharides in this entry.

5.6 Ligand geometry ⓘ

6 ligands are modelled in this entry.

In the following table, the Counts columns list the number of bonds (or angles) for which Mogul statistics could be retrieved, the number of bonds (or angles) that are observed in the model and the number of bonds (or angles) that are defined in the Chemical Component Dictionary. The Link column lists molecule types, if any, to which the group is linked. The Z score for a bond length (or angle) is the number of standard deviations the observed value is removed from the expected value. A bond length (or angle) with $|Z| > 2$ is considered an outlier worth inspection. RMSZ is the root-mean-square of all Z scores of the bond lengths (or angles).

Mol	Type	Chain	Res	Link	Bond lengths			Bond angles		
					Counts	RMSZ	$\# Z > 2$	Counts	RMSZ	$\# Z > 2$
2	U2F	C	501	-	31,38,38	0.83	1 (3%)	39,58,58	0.77	1 (2%)

Mol	Type	Chain	Res	Link	Bond lengths			Bond angles		
					Counts	RMSZ	# Z > 2	Counts	RMSZ	# Z > 2
3	STL	C	502	-	18,18,18	0.25	0	24,24,24	0.66	0
2	U2F	A	501	-	31,38,38	0.83	1 (3%)	39,58,58	0.77	1 (2%)
3	STL	A	502	-	18,18,18	0.25	0	24,24,24	0.66	0
3	STL	B	502	-	18,18,18	0.25	0	24,24,24	0.66	0
2	U2F	B	501	-	31,38,38	0.83	1 (3%)	39,58,58	0.77	1 (2%)

In the following table, the Chirals column lists the number of chiral outliers, the number of chiral centers analysed, the number of these observed in the model and the number defined in the Chemical Component Dictionary. Similar counts are reported in the Torsion and Rings columns. '-' means no outliers of that kind were identified.

Mol	Type	Chain	Res	Link	Chirals	Torsions	Rings
2	U2F	C	501	-	-	3/20/59/59	0/3/3/3
3	STL	C	502	-	-	0/5/5/5	0/2/2/2
2	U2F	A	501	-	-	6/20/59/59	0/3/3/3
3	STL	A	502	-	-	0/5/5/5	0/2/2/2
3	STL	B	502	-	-	0/5/5/5	0/2/2/2
2	U2F	B	501	-	-	2/20/59/59	0/3/3/3

All (3) bond length outliers are listed below:

Mol	Chain	Res	Type	Atoms	Z	Observed(Å)	Ideal(Å)
2	A	501	U2F	C7'-N3	3.20	1.38	1.33
2	C	501	U2F	C7'-N3	3.20	1.38	1.33
2	B	501	U2F	C7'-N3	3.18	1.38	1.33

All (3) bond angle outliers are listed below:

Mol	Chain	Res	Type	Atoms	Z	Observed(°)	Ideal(°)
2	B	501	U2F	C8'-C7'-N3	-3.90	114.72	123.31
2	C	501	U2F	C8'-C7'-N3	-3.90	114.74	123.31
2	A	501	U2F	C8'-C7'-N3	-3.89	114.75	123.31

There are no chirality outliers.

All (11) torsion outliers are listed below:

Mol	Chain	Res	Type	Atoms
2	A	501	U2F	O5-C1-O1-PB
2	A	501	U2F	PA-O3A-PB-O1
2	A	501	U2F	O4'-C4'-C5'-O5'

Continued on next page...

Continued from previous page...

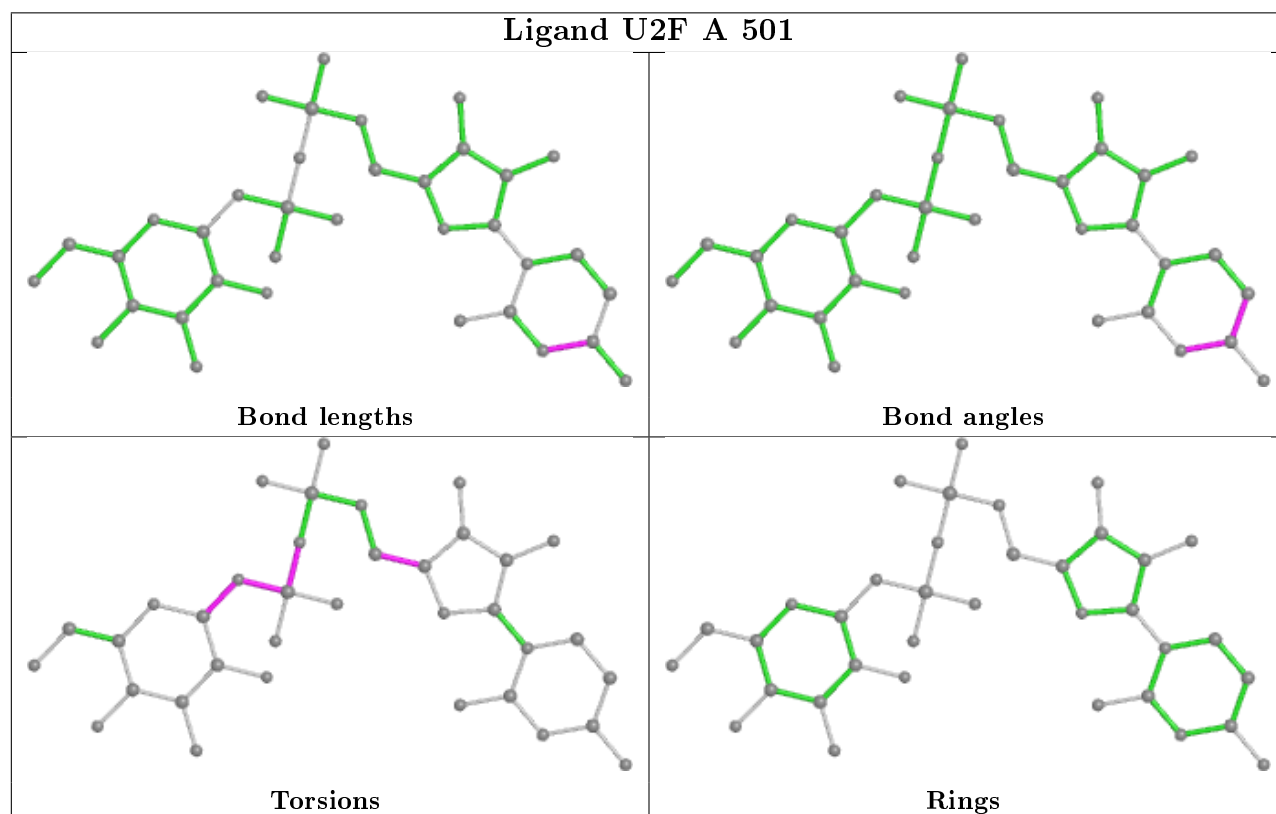
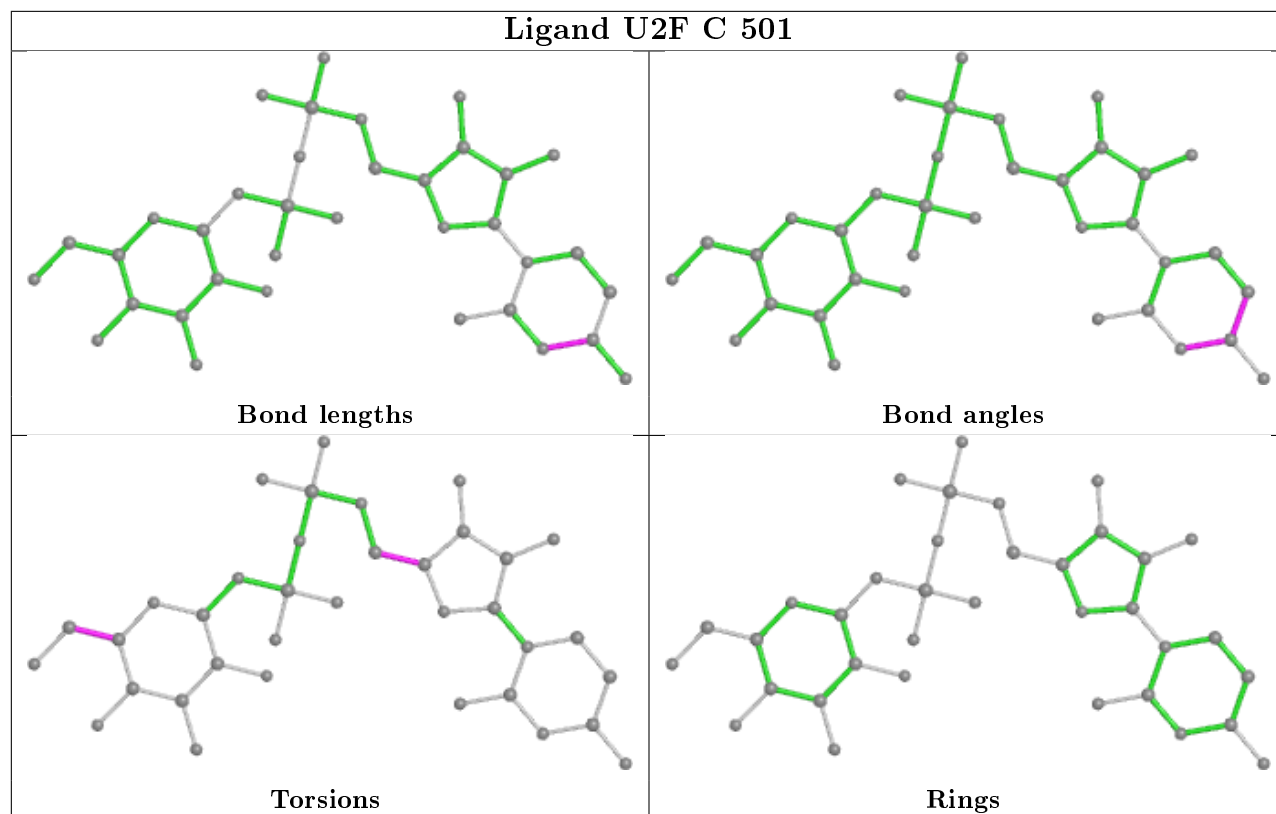
Mol	Chain	Res	Type	Atoms
2	C	501	U2F	C4-C5-C6-O6
2	A	501	U2F	C1-O1-PB-O3A
2	C	501	U2F	O5-C5-C6-O6
2	A	501	U2F	C3'-C4'-C5'-O5'
2	A	501	U2F	C1-O1-PB-O2B
2	B	501	U2F	O5-C5-C6-O6
2	B	501	U2F	O4'-C4'-C5'-O5'
2	C	501	U2F	O4'-C4'-C5'-O5'

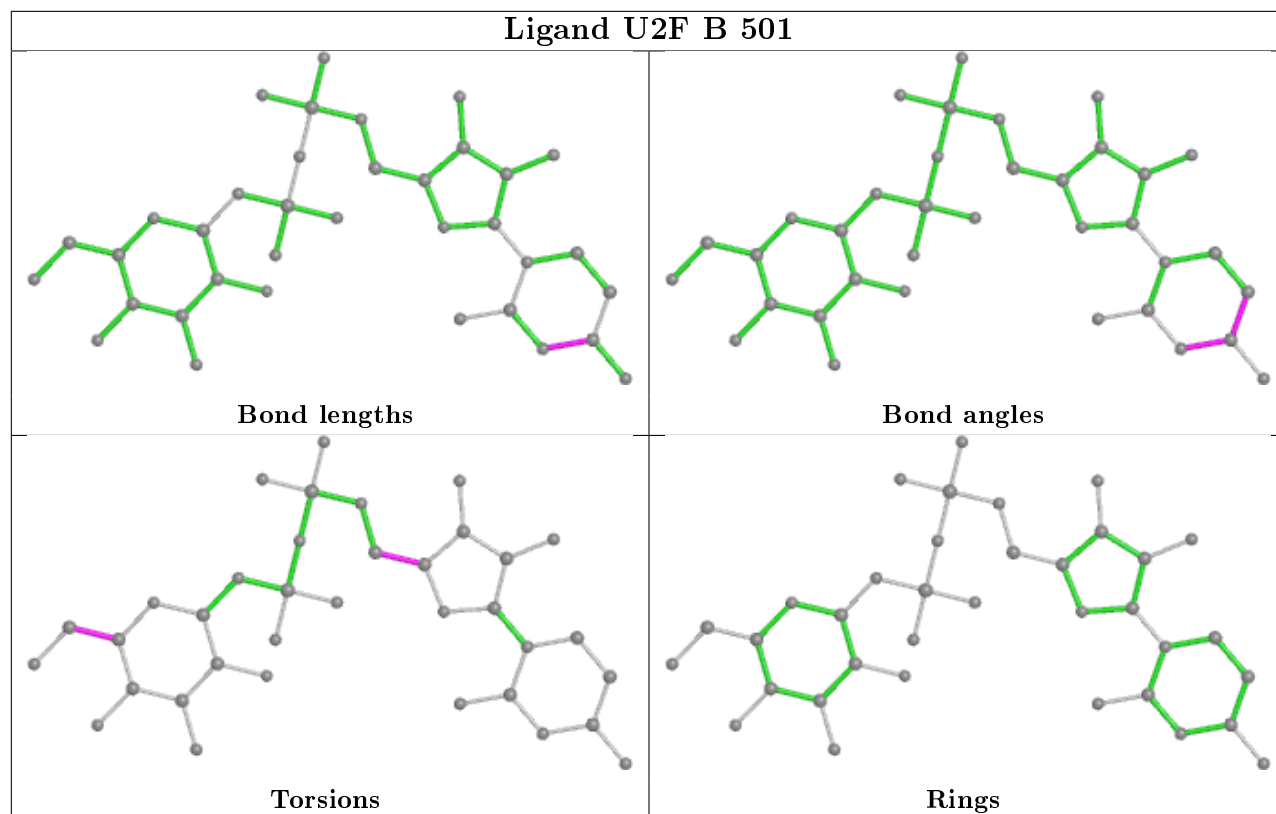
There are no ring outliers.

3 monomers are involved in 4 short contacts:

Mol	Chain	Res	Type	Clashes	Symm-Clashes
2	C	501	U2F	2	0
2	A	501	U2F	1	0
2	B	501	U2F	1	0

The following is a two-dimensional graphical depiction of Mogul quality analysis of bond lengths, bond angles, torsion angles, and ring geometry for all instances of the Ligand of Interest. In addition, ligands with molecular weight > 250 and outliers as shown on the validation Tables will also be included. For torsion angles, if less than 5% of the Mogul distribution of torsion angles is within 10 degrees of the torsion angle in question, then that torsion angle is considered an outlier. Any bond that is central to one or more torsion angles identified as an outlier by Mogul will be highlighted in the graph. For rings, the root-mean-square deviation (RMSD) between the ring in question and similar rings identified by Mogul is calculated over all ring torsion angles. If the average RMSD is greater than 60 degrees and the minimal RMSD between the ring in question and any Mogul-identified rings is also greater than 60 degrees, then that ring is considered an outlier. The outliers are highlighted in purple. The color gray indicates Mogul did not find sufficient equivalents in the CSD to analyse the geometry.





5.7 Other polymers [i](#)

There are no such residues in this entry.

5.8 Polymer linkage issues [i](#)

There are no chain breaks in this entry.

6 Fit of model and data ⓘ

6.1 Protein, DNA and RNA chains ⓘ

In the following table, the column labelled ‘#RSRZ > 2’ contains the number (and percentage) of RSRZ outliers, followed by percent RSRZ outliers for the chain as percentile scores relative to all X-ray entries and entries of similar resolution. The OWAB column contains the minimum, median, 95th percentile and maximum values of the occupancy-weighted average B-factor per residue. The column labelled ‘Q < 0.9’ lists the number of (and percentage) of residues with an average occupancy less than 0.9.

Mol	Chain	Analysed	<RSRZ>	#RSRZ>2	OWAB(Å ²)	Q<0.9
1	A	440/489 (89%)	-0.12	8 (1%) 68 64	36, 66, 107, 198	0
1	B	433/489 (88%)	0.25	30 (6%) 16 12	57, 82, 130, 172	0
1	C	436/489 (89%)	0.08	14 (3%) 47 40	46, 82, 131, 159	0
All	All	1309/1467 (89%)	0.07	52 (3%) 38 31	36, 77, 127, 198	0

All (52) RSRZ outliers are listed below:

Mol	Chain	Res	Type	RSRZ
1	A	74	HIS	5.0
1	A	407	GLN	4.6
1	B	326	PRO	4.3
1	A	73	ALA	4.3
1	B	327	THR	4.1
1	B	329	PHE	4.0
1	A	406	SER	3.9
1	B	333	ILE	3.7
1	C	156	VAL	3.4
1	B	428	GLU	3.4
1	B	425	ASP	3.3
1	B	108	GLN	3.2
1	B	287	ILE	3.2
1	C	157	SER	3.2
1	C	323	GLY	3.2
1	A	408	ARG	3.1
1	A	75	LEU	3.1
1	C	432	ALA	3.1
1	C	255	LEU	2.9
1	C	166	PRO	2.9
1	B	466	GLN	2.8
1	B	324	PHE	2.7
1	B	430	LYS	2.6

Continued on next page...

Continued from previous page...

Mol	Chain	Res	Type	RSRZ
1	B	260	ARG	2.5
1	B	328	GLY	2.5
1	A	34	HIS	2.5
1	B	294	HIS	2.5
1	B	290	GLU	2.4
1	B	401	LEU	2.4
1	A	76	PRO	2.4
1	B	297	LEU	2.4
1	B	16	MET	2.4
1	B	295	ARG	2.3
1	B	256	LYS	2.3
1	B	264	GLY	2.3
1	C	439	LEU	2.3
1	C	335	ASP	2.2
1	C	167	LEU	2.2
1	C	35	PHE	2.2
1	C	434	TYR	2.2
1	B	336	ARG	2.1
1	B	427	ASP	2.1
1	B	334	LYS	2.1
1	B	17	GLY	2.1
1	C	165	GLU	2.1
1	C	427	ASP	2.1
1	B	34	HIS	2.1
1	B	323	GLY	2.1
1	B	407	GLN	2.0
1	B	416	ILE	2.0
1	B	325	LEU	2.0
1	C	74	HIS	2.0

6.2 Non-standard residues in protein, DNA, RNA chains ⓘ

There are no non-standard protein/DNA/RNA residues in this entry.

6.3 Carbohydrates ⓘ

There are no monosaccharides in this entry.

6.4 Ligands ⓘ

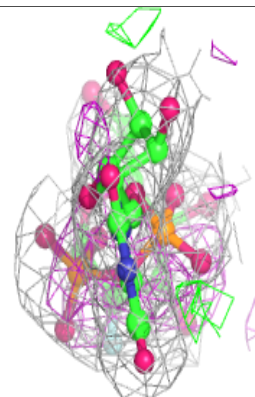
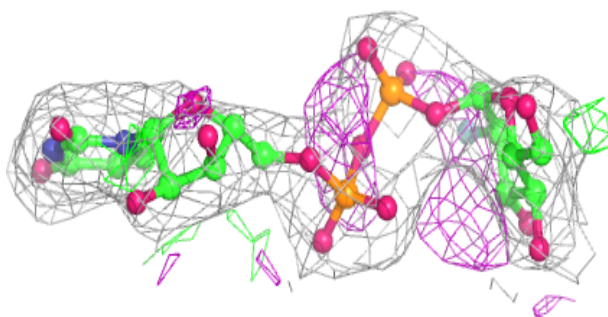
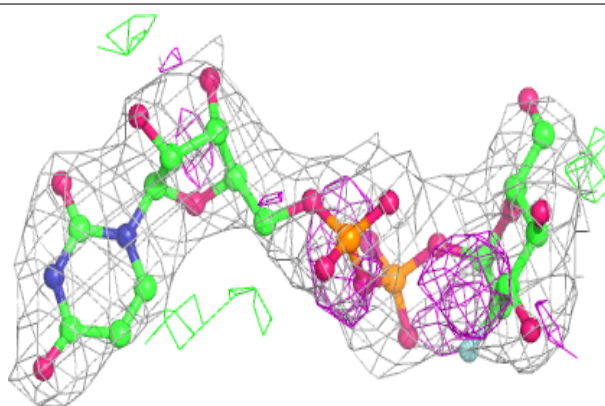
In the following table, the Atoms column lists the number of modelled atoms in the group and the number defined in the chemical component dictionary. The B-factors column lists the minimum, median, 95th percentile and maximum values of B factors of atoms in the group. The column labelled 'Q< 0.9' lists the number of atoms with occupancy less than 0.9.

Mol	Type	Chain	Res	Atoms	RSCC	RSR	B-factors(Å ²)	Q<0.9
3	STL	B	502	17/17	0.81	0.32	89,121,164,168	0
3	STL	C	502	17/17	0.82	0.35	92,105,173,176	0
3	STL	A	502	17/17	0.88	0.35	88,117,201,201	0
2	U2F	A	501	36/36	0.94	0.15	64,87,111,118	0
2	U2F	C	501	36/36	0.96	0.14	60,72,88,92	0
2	U2F	B	501	36/36	0.97	0.20	65,78,95,101	0

The following is a graphical depiction of the model fit to experimental electron density of all instances of the Ligand of Interest. In addition, ligands with molecular weight > 250 and outliers as shown on the geometry validation Tables will also be included. Each fit is shown from different orientation to approximate a three-dimensional view.

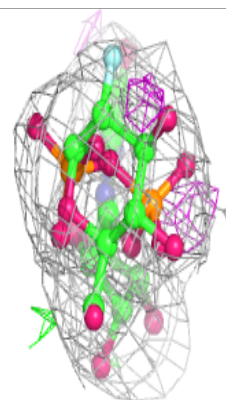
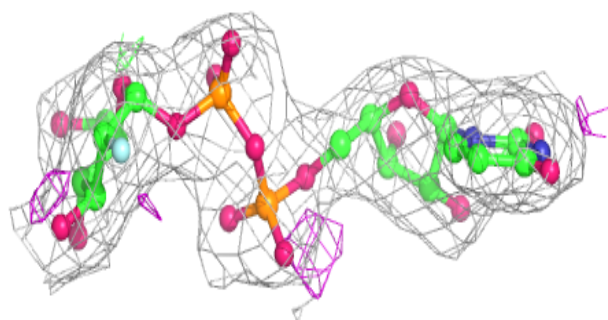
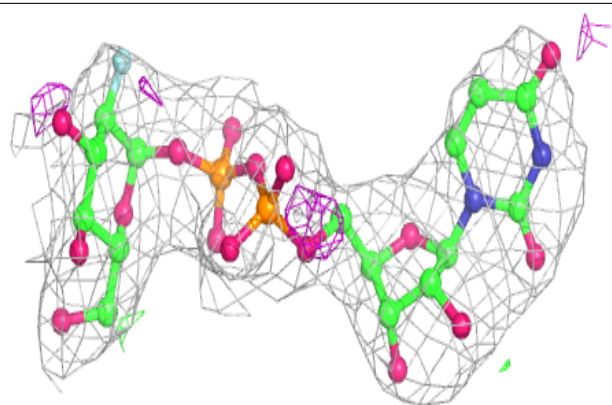
Electron density around U2F A 501:

2mF_o-DF_c (at 0.7 rmsd) in gray
mF_o-DF_c (at 3 rmsd) in purple (negative)
and green (positive)

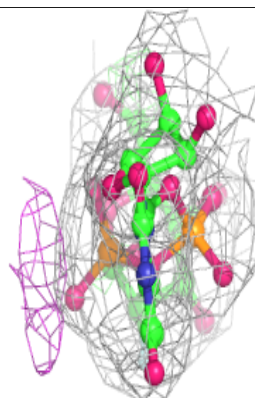
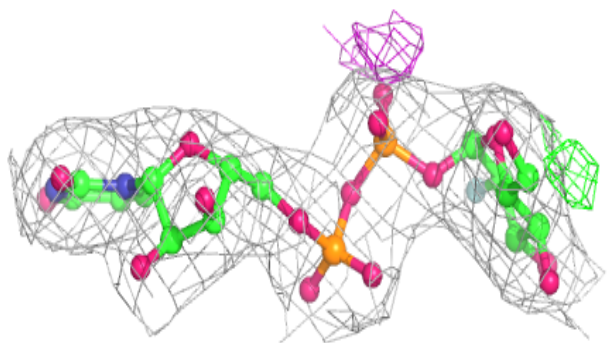
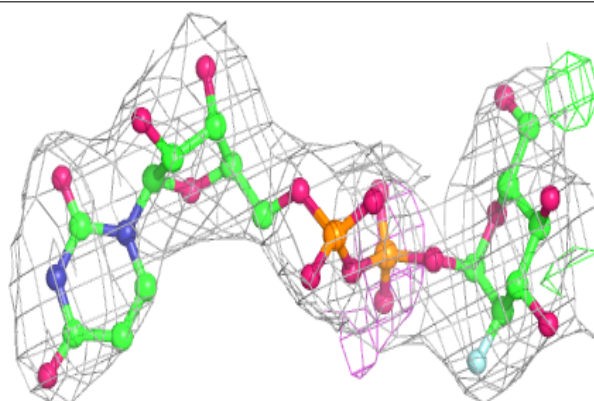


Electron density around U2F C 501:

$2mF_o-DF_c$ (at 0.7 rmsd) in gray
 mF_o-DF_c (at 3 rmsd) in purple (negative)
and green (positive)

**Electron density around U2F B 501:**

$2mF_o-DF_c$ (at 0.7 rmsd) in gray
 mF_o-DF_c (at 3 rmsd) in purple (negative)
and green (positive)



6.5 Other polymers [i](#)

There are no such residues in this entry.