



Full wwPDB X-ray Structure Validation Report ⓘ

May 15, 2020 – 01:57 am BST

PDB ID : 6JET
Title : Actinonin bound crystal structure of class I type a peptide deformylase from *Acinetobacter baumannii*
Authors : Ho, T.H.; Lee, I.H.; Kang, L.W.
Deposited on : 2019-02-07
Resolution : 2.60 Å(reported)

This is a Full wwPDB X-ray Structure Validation Report for a publicly released PDB entry.

We welcome your comments at validation@mail.wwpdb.org

A user guide is available at

<https://www.wwpdb.org/validation/2017/XrayValidationReportHelp>

with specific help available everywhere you see the ⓘ symbol.

The following versions of software and data (see [references ⓘ](#)) were used in the production of this report:

MolProbity : 4.02b-467
Mogul : 1.8.5 (274361), CSD as541be (2020)
Xtriage (Phenix) : 1.13
EDS : 2.11
buster-report : 1.1.7 (2018)
Percentile statistics : 20191225.v01 (using entries in the PDB archive December 25th 2019)
Refmac : 5.8.0158
CCP4 : 7.0.044 (Gargrove)
Ideal geometry (proteins) : Engh & Huber (2001)
Ideal geometry (DNA, RNA) : Parkinson et al. (1996)
Validation Pipeline (wwPDB-VP) : 2.11

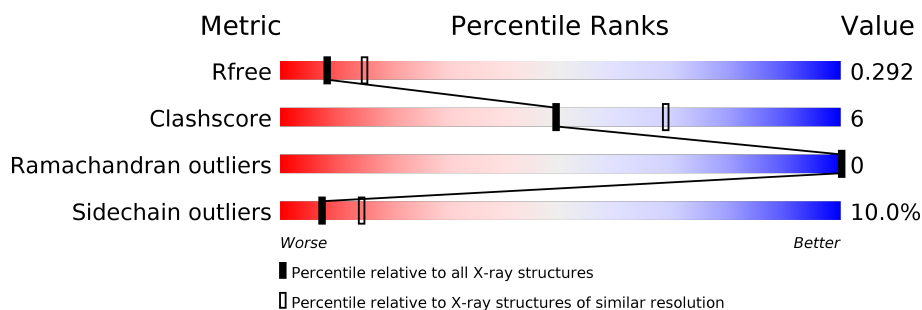
1 Overall quality at a glance

The following experimental techniques were used to determine the structure:

X-RAY DIFFRACTION

The reported resolution of this entry is 2.60 Å.

Percentile scores (ranging between 0-100) for global validation metrics of the entry are shown in the following graphic. The table shows the number of entries on which the scores are based.



Metric	Whole archive (#Entries)	Similar resolution (#Entries, resolution range(Å))
R_{free}	130704	3163 (2.60-2.60)
Clashscore	141614	3518 (2.60-2.60)
Ramachandran outliers	138981	3455 (2.60-2.60)
Sidechain outliers	138945	3455 (2.60-2.60)

The table below summarises the geometric issues observed across the polymeric chains and their fit to the electron density. The red, orange, yellow and green segments on the lower bar indicate the fraction of residues that contain outliers for ≥ 3 , 2, 1 and 0 types of geometric quality criteria respectively. A grey segment represents the fraction of residues that are not modelled. The numeric value for each fraction is indicated below the corresponding segment, with a dot representing fractions $\leq 5\%$.

Mol	Chain	Length	Quality of chain
1	A	171	
1	B	171	

2 Entry composition [i](#)

There are 4 unique types of molecules in this entry. The entry contains 2651 atoms, of which 0 are hydrogens and 0 are deuteriums.

In the tables below, the ZeroOcc column contains the number of atoms modelled with zero occupancy, the AltConf column contains the number of residues with at least one atom in alternate conformation and the Trace column contains the number of residues modelled with at most 2 atoms.

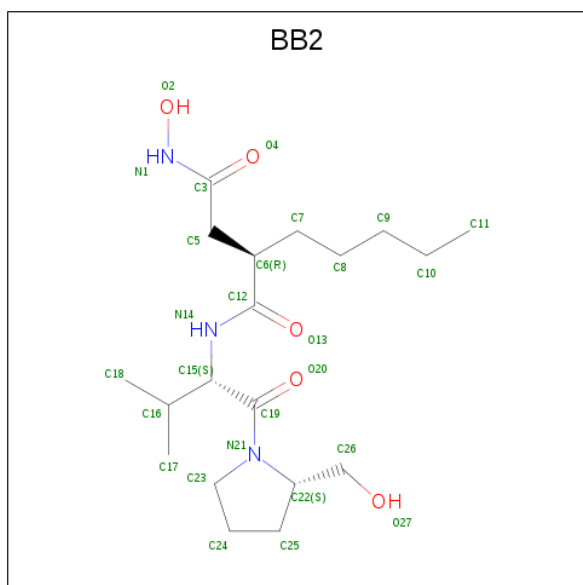
- Molecule 1 is a protein called Peptide deformylase.

Mol	Chain	Residues	Atoms					ZeroOcc	AltConf	Trace
1	A	170	Total	C	N	O	S	0	0	0
			1262	807	208	240	7			
1	B	171	Total	C	N	O	S	0	0	0
			1277	815	214	241	7			

- Molecule 2 is ZINC ION (three-letter code: ZN) (formula: Zn).

Mol	Chain	Residues	Atoms		ZeroOcc	AltConf
2	B	1	Total	Zn	0	0
			1	1		
2	A	1	Total	Zn	0	0
			1	1		

- Molecule 3 is ACTINONIN (three-letter code: BB2) (formula: C₁₉H₃₅N₃O₅) (labeled as "Ligand of Interest" by author).



Mol	Chain	Residues	Atoms				ZeroOcc	AltConf
3	A	1	Total	C	N	O	0	0
			27	19	3	5		
3	B	1	Total	C	N	O	0	0
			27	19	3	5		

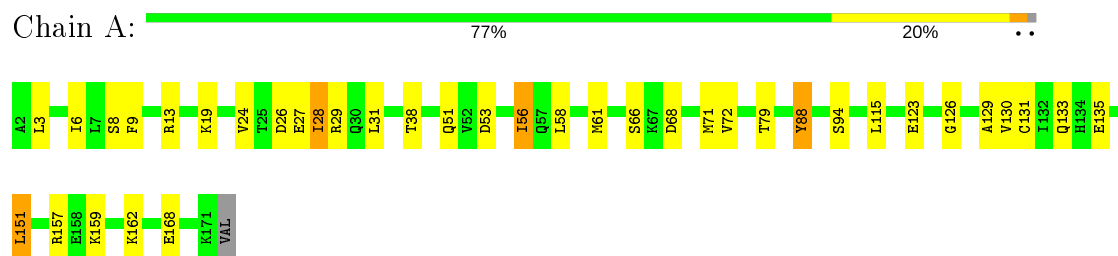
- Molecule 4 is water.

Mol	Chain	Residues	Atoms		ZeroOcc	AltConf
4	A	23	Total	O	0	0
			23	23		
4	B	33	Total	O	0	0
			33	33		

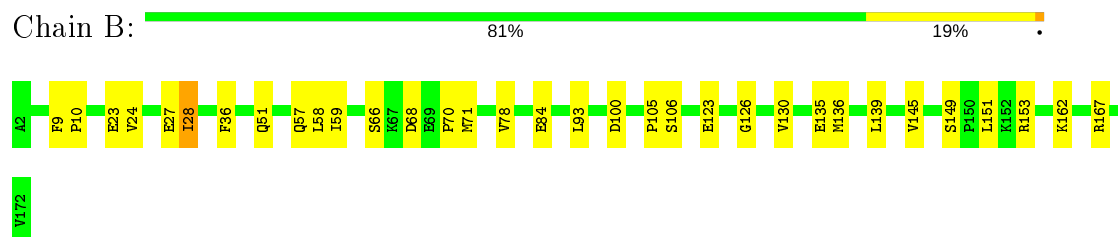
3 Residue-property plots [i](#)

These plots are drawn for all protein, RNA and DNA chains in the entry. The first graphic for a chain summarises the proportions of the various outlier classes displayed in the second graphic. The second graphic shows the sequence view annotated by issues in geometry. Residues are color-coded according to the number of geometric quality criteria for which they contain at least one outlier: green = 0, yellow = 1, orange = 2 and red = 3 or more. Stretches of 2 or more consecutive residues without any outlier are shown as a green connector. Residues present in the sample, but not in the model, are shown in grey.

- Molecule 1: Peptide deformylase



- Molecule 1: Peptide deformylase



4 Data and refinement statistics

Property	Value	Source
Space group	P 1 21 1	Depositor
Cell constants a, b, c, α , β , γ	43.67Å 112.90Å 43.68Å 90.00° 102.85° 90.00°	Depositor
Resolution (Å)	49.99 – 2.60 39.83 – 2.60	Depositor EDS
% Data completeness (in resolution range)	99.7 (49.99-2.60) 99.6 (39.83-2.60)	Depositor EDS
R_{merge}	0.11	Depositor
R_{sym}	(Not available)	Depositor
$\langle I/\sigma(I) \rangle$ ¹	27.66 (at 2.61Å)	Xtriage
Refinement program	REFMAC 5.8.0158	Depositor
R, R_{free}	0.247 , 0.295 0.249 , 0.292	Depositor DCC
R_{free} test set	646 reflections (5.09%)	wwPDB-VP
Wilson B-factor (Å ²)	34.8	Xtriage
Anisotropy	0.052	Xtriage
Bulk solvent k_{sol} (e/Å ³), B_{sol} (Å ²)	0.36 , 28.9	EDS
L-test for twinning ²	$\langle L \rangle = 0.42$, $\langle L^2 \rangle = 0.25$	Xtriage
Estimated twinning fraction	0.436 for l,-k,h	Xtriage
F_o, F_c correlation	0.91	EDS
Total number of atoms	2651	wwPDB-VP
Average B, all atoms (Å ²)	33.0	wwPDB-VP

Xtriage's analysis on translational NCS is as follows: *The largest off-origin peak in the Patterson function is 5.63% of the height of the origin peak. No significant pseudotranslation is detected.*

¹Intensities estimated from amplitudes.

²Theoretical values of $\langle |L| \rangle$, $\langle L^2 \rangle$ for acentric reflections are 0.5, 0.333 respectively for untwinned datasets, and 0.375, 0.2 for perfectly twinned datasets.

5 Model quality [i](#)

5.1 Standard geometry [i](#)

Bond lengths and bond angles in the following residue types are not validated in this section: ZN, BB2

The Z score for a bond length (or angle) is the number of standard deviations the observed value is removed from the expected value. A bond length (or angle) with $|Z| > 5$ is considered an outlier worth inspection. RMSZ is the root-mean-square of all Z scores of the bond lengths (or angles).

Mol	Chain	Bond lengths		Bond angles	
		RMSZ	$\# Z > 5$	RMSZ	$\# Z > 5$
1	A	0.62	0/1285	0.84	1/1755 (0.1%)
1	B	0.59	0/1300	0.81	0/1775
All	All	0.61	0/2585	0.82	1/3530 (0.0%)

There are no bond length outliers.

All (1) bond angle outliers are listed below:

Mol	Chain	Res	Type	Atoms	Z	Observed(°)	Ideal(°)
1	A	151	LEU	CA-CB-CG	6.68	130.67	115.30

There are no chirality outliers.

There are no planarity outliers.

5.2 Too-close contacts [i](#)

In the following table, the Non-H and H(model) columns list the number of non-hydrogen atoms and hydrogen atoms in the chain respectively. The H(added) column lists the number of hydrogen atoms added and optimized by MolProbity. The Clashes column lists the number of clashes within the asymmetric unit, whereas Symm-Clashes lists symmetry related clashes.

Mol	Chain	Non-H	H(model)	H(added)	Clashes	Symm-Clashes
1	A	1262	0	1215	19	0
1	B	1277	0	1235	11	0
2	A	1	0	0	0	0
2	B	1	0	0	0	0
3	A	27	0	34	1	0
3	B	27	0	34	3	0
4	A	23	0	0	1	0
4	B	33	0	0	0	0

Continued on next page...

Continued from previous page...

Mol	Chain	Non-H	H(model)	H(added)	Clashes	Symm-Clashes
All	All	2651	0	2518	30	0

The all-atom clashscore is defined as the number of clashes found per 1000 atoms (including hydrogen atoms). The all-atom clashscore for this structure is 6.

All (30) close contacts within the same asymmetric unit are listed below, sorted by their clash magnitude.

Atom-1	Atom-2	Interatomic distance (Å)	Clash overlap (Å)
1:A:27:GLU:OE2	4:A:301:HOH:O	2.12	0.68
1:B:135:GLU:OE2	3:B:202:BB2:N1	2.28	0.67
1:A:135:GLU:OE2	3:A:202:BB2:N1	2.29	0.65
1:B:57:GLN:HA	1:B:139:LEU:HD22	1.83	0.59
1:A:72:VAL:HG11	1:A:115:LEU:HG	1.85	0.57
1:B:145:VAL:O	1:B:153:ARG:NH1	2.37	0.57
1:B:66:SER:CB	1:B:68:ASP:OD1	2.59	0.51
1:B:93:LEU:HG	3:B:202:BB2:H51	1.92	0.51
1:A:66:SER:CB	1:A:68:ASP:OD1	2.60	0.49
1:A:26:ASP:OD1	1:A:27:GLU:N	2.45	0.49
1:A:9:PHE:CE2	1:A:157:ARG:HG3	2.48	0.48
1:A:19:LYS:O	1:A:56:ILE:HA	2.13	0.48
1:A:129:ALA:O	1:A:133:GLN:NE2	2.29	0.47
1:B:126:GLY:O	1:B:130:VAL:HG23	2.15	0.47
1:A:31:LEU:HD12	1:A:58:LEU:HD13	1.96	0.46
1:A:24:VAL:HA	1:A:28:ILE:HG12	1.98	0.46
1:A:51:GLN:NE2	1:A:94:SER:OG	2.42	0.45
1:A:6:ILE:HD11	1:A:38:THR:HG22	2.00	0.44
1:A:29:ARG:HG2	1:A:115:LEU:HD22	2.00	0.43
1:A:126:GLY:O	1:A:130:VAL:HG23	2.18	0.43
1:B:9:PHE:HA	1:B:10:PRO:HA	1.86	0.43
1:A:88:TYR:CD2	1:A:130:VAL:HG21	2.55	0.42
1:A:24:VAL:HG13	1:A:28:ILE:HD11	2.01	0.42
1:A:13:ARG:HD2	1:A:53:ASP:OD1	2.19	0.42
1:B:51:GLN:OE1	3:B:202:BB2:O2	2.37	0.42
1:B:36:PHE:CZ	1:B:70:PRO:HB2	2.55	0.42
1:B:24:VAL:HG13	1:B:28:ILE:HD11	2.00	0.41
1:A:61:MET:SD	1:A:131:CYS:SG	3.05	0.41
1:B:84:GLU:O	1:B:105:PRO:HA	2.21	0.41
1:A:61:MET:O	1:A:71:MET:N	2.54	0.40

There are no symmetry-related clashes.

5.3 Torsion angles

5.3.1 Protein backbone

In the following table, the Percentiles column shows the percent Ramachandran outliers of the chain as a percentile score with respect to all X-ray entries followed by that with respect to entries of similar resolution.

The Analysed column shows the number of residues for which the backbone conformation was analysed, and the total number of residues.

Mol	Chain	Analysed	Favoured	Allowed	Outliers	Percentiles	
1	A	168/171 (98%)	161 (96%)	7 (4%)	0	100	100
1	B	169/171 (99%)	159 (94%)	10 (6%)	0	100	100
All	All	337/342 (98%)	320 (95%)	17 (5%)	0	100	100

There are no Ramachandran outliers to report.

5.3.2 Protein sidechains

In the following table, the Percentiles column shows the percent sidechain outliers of the chain as a percentile score with respect to all X-ray entries followed by that with respect to entries of similar resolution.

The Analysed column shows the number of residues for which the sidechain conformation was analysed, and the total number of residues.

Mol	Chain	Analysed	Rotameric	Outliers	Percentiles	
1	A	129/152 (85%)	118 (92%)	11 (8%)	10	21
1	B	131/152 (86%)	116 (88%)	15 (12%)	5	10
All	All	260/304 (86%)	234 (90%)	26 (10%)	7	14

All (26) residues with a non-rotameric sidechain are listed below:

Mol	Chain	Res	Type
1	A	3	LEU
1	A	8	SER
1	A	28	ILE
1	A	56	ILE
1	A	79	THR
1	A	88	TYR
1	A	123	GLU
1	A	151	LEU

Continued on next page...

Continued from previous page...

Mol	Chain	Res	Type
1	A	159	LYS
1	A	162	LYS
1	A	168	GLU
1	B	23	GLU
1	B	27	GLU
1	B	28	ILE
1	B	58	LEU
1	B	59	ILE
1	B	71	MET
1	B	78	VAL
1	B	100	ASP
1	B	106	SER
1	B	123	GLU
1	B	136	MET
1	B	149	SER
1	B	151	LEU
1	B	162	LYS
1	B	167	ARG

Some sidechains can be flipped to improve hydrogen bonding and reduce clashes. There are no such sidechains identified.

5.3.3 RNA [i](#)

There are no RNA molecules in this entry.

5.4 Non-standard residues in protein, DNA, RNA chains [i](#)

There are no non-standard protein/DNA/RNA residues in this entry.

5.5 Carbohydrates [i](#)

There are no carbohydrates in this entry.

5.6 Ligand geometry [i](#)

Of 4 ligands modelled in this entry, 2 are monoatomic - leaving 2 for Mogul analysis.

In the following table, the Counts columns list the number of bonds (or angles) for which Mogul statistics could be retrieved, the number of bonds (or angles) that are observed in the model and

the number of bonds (or angles) that are defined in the Chemical Component Dictionary. The Link column lists molecule types, if any, to which the group is linked. The Z score for a bond length (or angle) is the number of standard deviations the observed value is removed from the expected value. A bond length (or angle) with $|Z| > 2$ is considered an outlier worth inspection. RMSZ is the root-mean-square of all Z scores of the bond lengths (or angles).

Mol	Type	Chain	Res	Link	Bond lengths			Bond angles		
					Counts	RMSZ	# Z > 2	Counts	RMSZ	# Z > 2
3	BB2	B	202	2	27,27,27	0.32	0	34,35,35	0.96	2 (5%)
3	BB2	A	202	2	27,27,27	0.61	0	34,35,35	1.29	4 (11%)

In the following table, the Chirals column lists the number of chiral outliers, the number of chiral centers analysed, the number of these observed in the model and the number defined in the Chemical Component Dictionary. Similar counts are reported in the Torsion and Rings columns. '-' means no outliers of that kind were identified.

Mol	Type	Chain	Res	Link	Chirals	Torsions	Rings
3	BB2	B	202	2	-	12/33/43/43	0/1/1/1
3	BB2	A	202	2	-	16/33/43/43	0/1/1/1

There are no bond length outliers.

All (6) bond angle outliers are listed below:

Mol	Chain	Res	Type	Atoms	Z	Observed(°)	Ideal(°)
3	B	202	BB2	C16-C15-C19	3.38	117.56	110.73
3	A	202	BB2	C24-C23-N21	-2.97	98.03	103.25
3	A	202	BB2	C6-C5-C3	-2.93	106.55	112.10
3	A	202	BB2	C25-C22-N21	-2.88	97.77	102.81
3	A	202	BB2	C16-C15-C19	2.74	116.27	110.73
3	B	202	BB2	O4-C3-N1	-2.13	120.65	123.27

There are no chirality outliers.

All (28) torsion outliers are listed below:

Mol	Chain	Res	Type	Atoms
3	B	202	BB2	C3-C5-C6-C12
3	B	202	BB2	C3-C5-C6-C7
3	B	202	BB2	C12-C6-C7-C8
3	B	202	BB2	N21-C22-C26-O27
3	A	202	BB2	C3-C5-C6-C12
3	A	202	BB2	C3-C5-C6-C7
3	A	202	BB2	C12-C6-C7-C8

Continued on next page...

Continued from previous page...

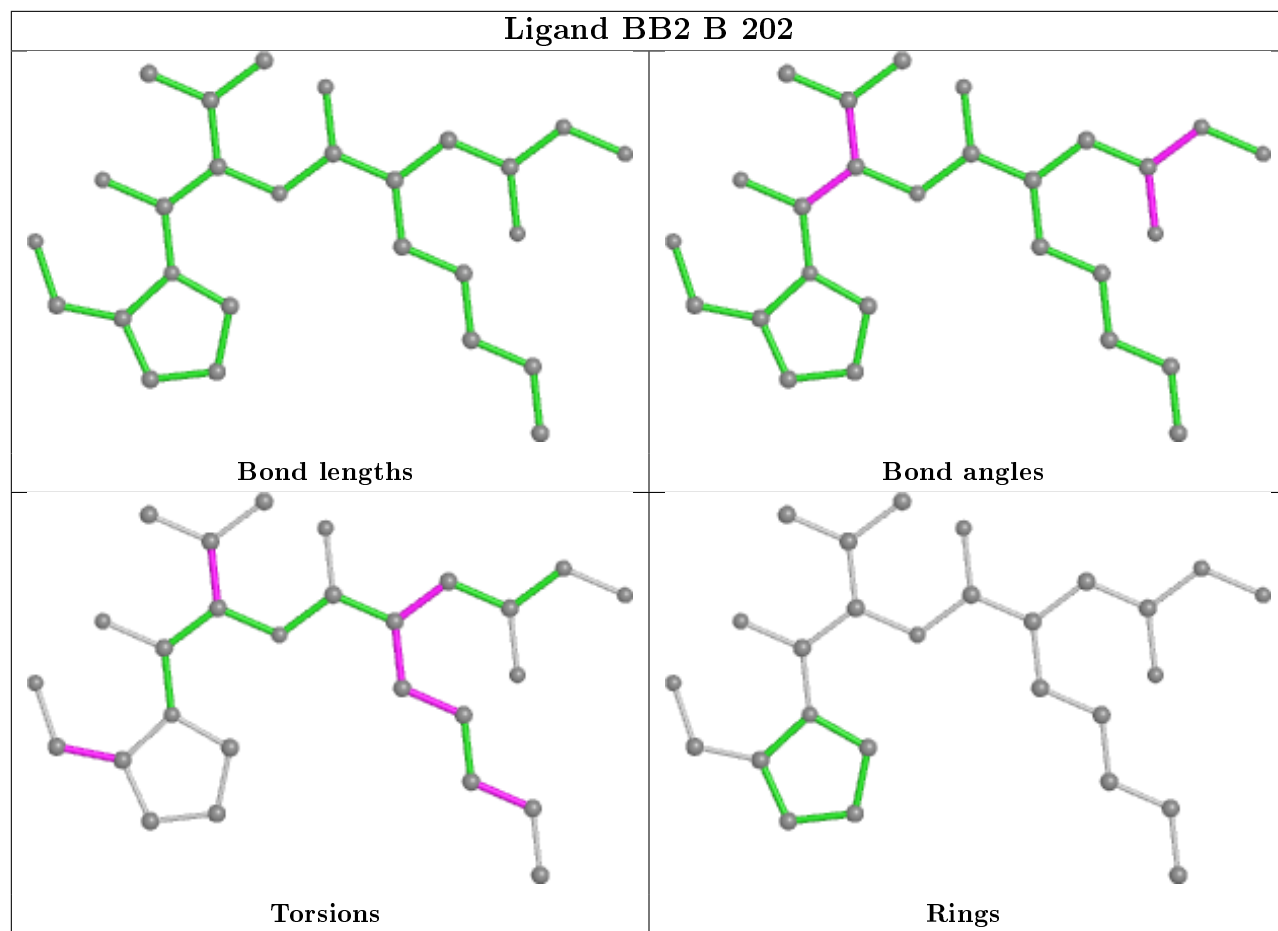
Mol	Chain	Res	Type	Atoms
3	B	202	BB2	C19-C15-C16-C18
3	B	202	BB2	N14-C15-C16-C18
3	B	202	BB2	C19-C15-C16-C17
3	A	202	BB2	N14-C15-C16-C18
3	A	202	BB2	C19-C15-C16-C17
3	A	202	BB2	O20-C19-N21-C22
3	A	202	BB2	C15-C19-N21-C22
3	A	202	BB2	C19-C15-C16-C18
3	B	202	BB2	N14-C15-C16-C17
3	A	202	BB2	N14-C15-C16-C17
3	A	202	BB2	C6-C7-C8-C9
3	B	202	BB2	C5-C6-C7-C8
3	A	202	BB2	C5-C6-C7-C8
3	B	202	BB2	C25-C22-C26-O27
3	B	202	BB2	C11-C10-C9-C8
3	B	202	BB2	C6-C7-C8-C9
3	A	202	BB2	N21-C22-C26-O27
3	A	202	BB2	C25-C22-C26-O27
3	A	202	BB2	C15-C19-N21-C23
3	A	202	BB2	N1-C3-C5-C6
3	A	202	BB2	O20-C19-N21-C23

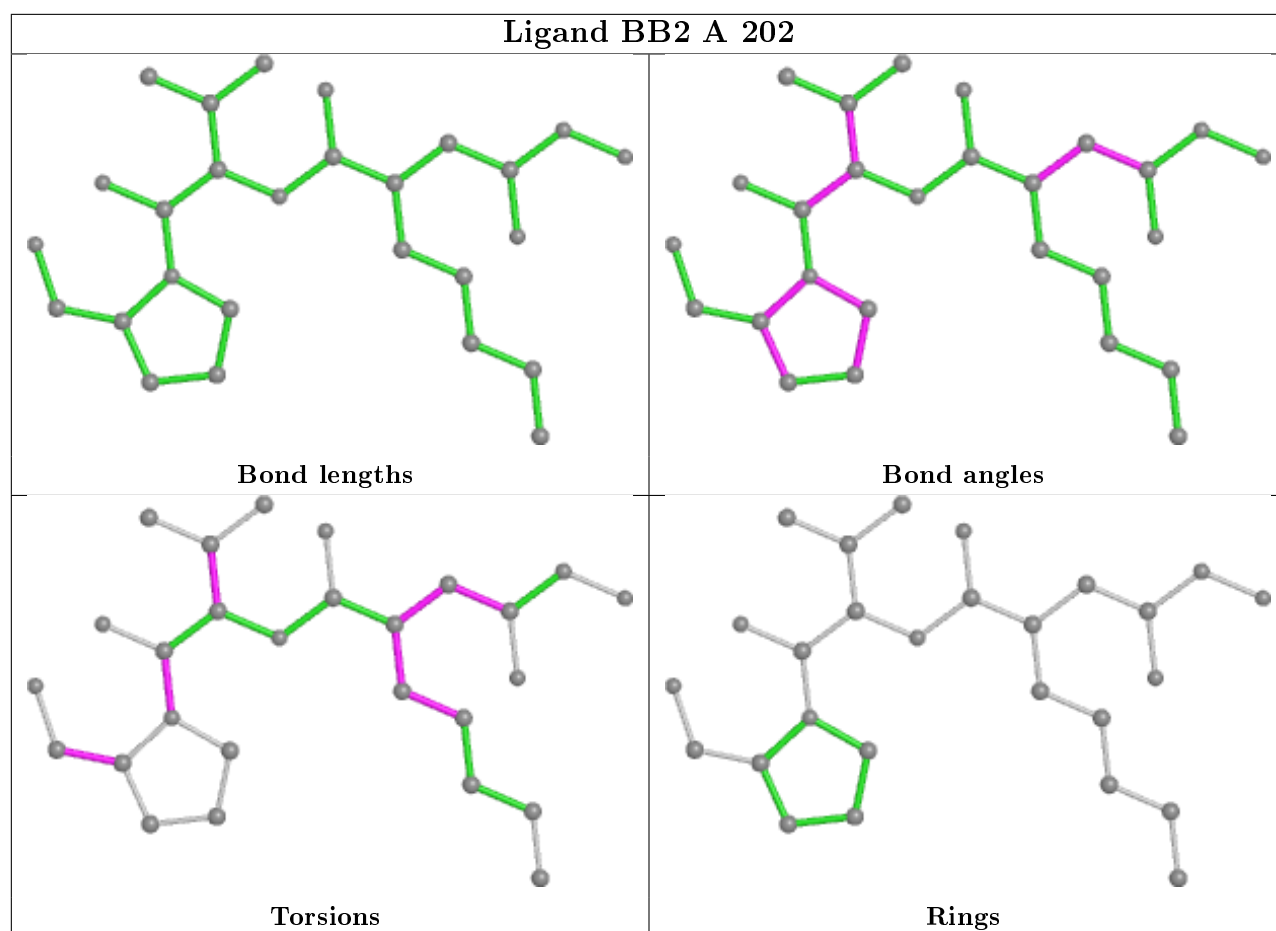
There are no ring outliers.

2 monomers are involved in 4 short contacts:

Mol	Chain	Res	Type	Clashes	Symm-Clashes
3	B	202	BB2	3	0
3	A	202	BB2	1	0

The following is a two-dimensional graphical depiction of Mogul quality analysis of bond lengths, bond angles, torsion angles, and ring geometry for all instances of the Ligand of Interest. In addition, ligands with molecular weight > 250 and outliers as shown on the validation Tables will also be included. For torsion angles, if less than 5% of the Mogul distribution of torsion angles is within 10 degrees of the torsion angle in question, then that torsion angle is considered an outlier. Any bond that is central to one or more torsion angles identified as an outlier by Mogul will be highlighted in the graph. For rings, the root-mean-square deviation (RMSD) between the ring in question and similar rings identified by Mogul is calculated over all ring torsion angles. If the average RMSD is greater than 60 degrees and the minimal RMSD between the ring in question and any Mogul-identified rings is also greater than 60 degrees, then that ring is considered an outlier. The outliers are highlighted in purple. The color gray indicates Mogul did not find sufficient equivalents in the CSD to analyse the geometry.





5.7 Other polymers [i](#)

There are no such residues in this entry.

5.8 Polymer linkage issues [i](#)

There are no chain breaks in this entry.

6 Fit of model and data

6.1 Protein, DNA and RNA chains

Unable to reproduce the depositors R factor - this section is therefore empty.

6.2 Non-standard residues in protein, DNA, RNA chains

Unable to reproduce the depositors R factor - this section is therefore empty.

6.3 Carbohydrates

Unable to reproduce the depositors R factor - this section is therefore empty.

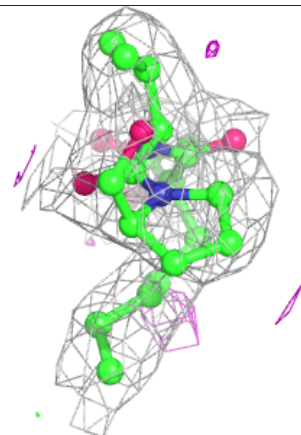
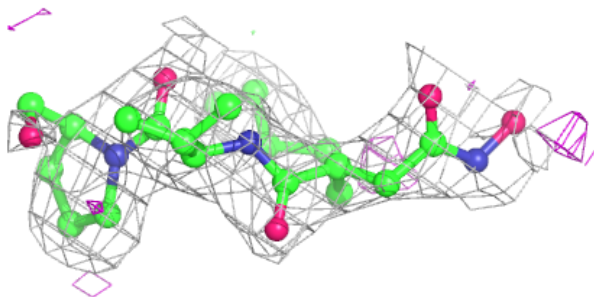
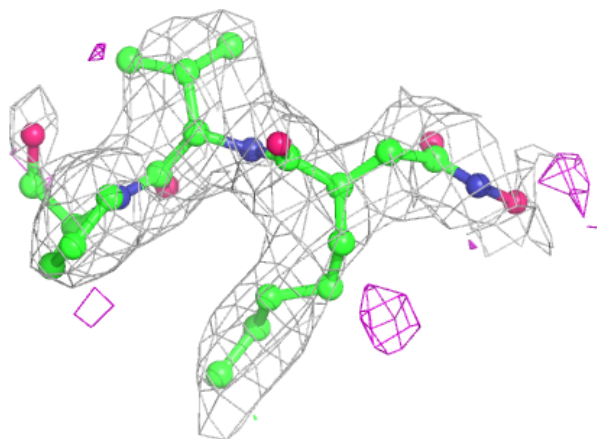
6.4 Ligands

Unable to reproduce the depositors R factor - this section is therefore empty.

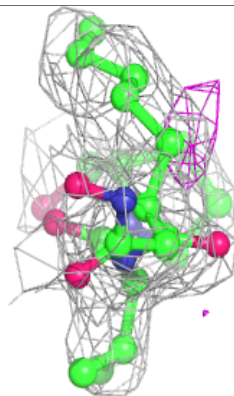
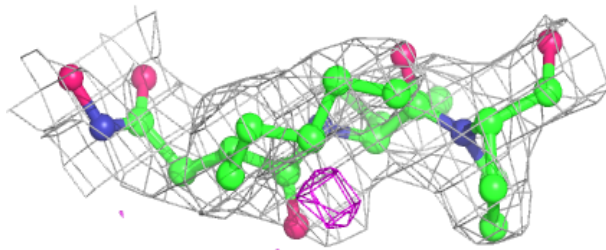
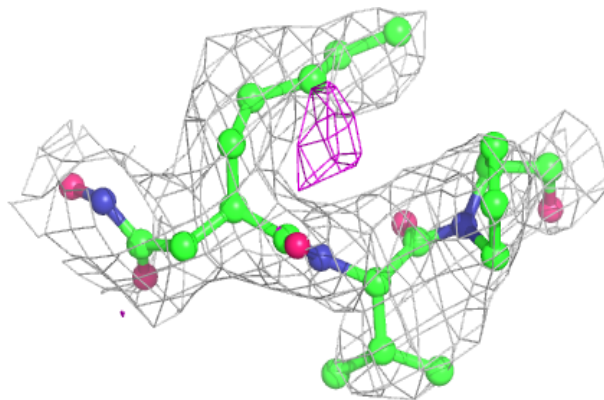
The following is a graphical depiction of the model fit to experimental electron density of all instances of the Ligand of Interest. In addition, ligands with molecular weight > 250 and outliers as shown on the geometry validation Tables will also be included. Each fit is shown from different orientation to approximate a three-dimensional view.

Electron density around BB2 B 202:

$2mF_o-DF_c$ (at 0.7 rmsd) in gray
 mF_o-DF_c (at 3 rmsd) in purple (negative)
and green (positive)

**Electron density around BB2 A 202:**

$2mF_o-DF_c$ (at 0.7 rmsd) in gray
 mF_o-DF_c (at 3 rmsd) in purple (negative)
and green (positive)



6.5 Other polymers

Unable to reproduce the depositors R factor - this section is therefore empty.