



# Full wwPDB X-ray Structure Validation Report ⓘ

May 16, 2020 – 07:48 am BST

PDB ID : 6JEY  
Title : Covalent bond formation between ynone moiety of synthetic fatty acid and hPPAR $\gamma$ -LBD  
Authors : Kojima, H.; Yamamoto, K.; Itoh, T.  
Deposited on : 2019-02-07  
Resolution : 2.20 Å(reported)

This is a Full wwPDB X-ray Structure Validation Report for a publicly released PDB entry.

We welcome your comments at [validation@mail.wwpdb.org](mailto:validation@mail.wwpdb.org)

A user guide is available at

<https://www.wwpdb.org/validation/2017/XrayValidationReportHelp>

with specific help available everywhere you see the ⓘ symbol.

---

The following versions of software and data (see [references ⓘ](#)) were used in the production of this report:

MolProbity : 4.02b-467  
Mogul : 1.8.5 (274361), CSD as541be (2020)  
Xtriage (Phenix) : 1.13  
EDS : 2.11  
buster-report : 1.1.7 (2018)  
Percentile statistics : 20191225.v01 (using entries in the PDB archive December 25th 2019)  
Refmac : 5.8.0158  
CCP4 : 7.0.044 (Gargrove)  
Ideal geometry (proteins) : Engh & Huber (2001)  
Ideal geometry (DNA, RNA) : Parkinson et al. (1996)  
Validation Pipeline (wwPDB-VP) : 2.11

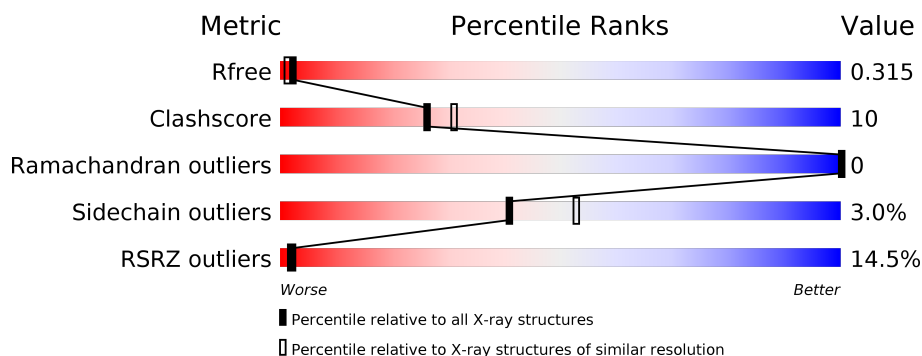
# 1 Overall quality at a glance

The following experimental techniques were used to determine the structure:

## *X-RAY DIFFRACTION*

The reported resolution of this entry is 2.20 Å.

Percentile scores (ranging between 0-100) for global validation metrics of the entry are shown in the following graphic. The table shows the number of entries on which the scores are based.



Metric	Whole archive (#Entries)	Similar resolution (#Entries, resolution range(Å))
$R_{free}$	130704	4898 (2.20-2.20)
Clashscore	141614	5594 (2.20-2.20)
Ramachandran outliers	138981	5503 (2.20-2.20)
Sidechain outliers	138945	5504 (2.20-2.20)
RSRZ outliers	127900	4800 (2.20-2.20)

The table below summarises the geometric issues observed across the polymeric chains and their fit to the electron density. The red, orange, yellow and green segments on the lower bar indicate the fraction of residues that contain outliers for  $\geq 3$ , 2, 1 and 0 types of geometric quality criteria respectively. A grey segment represents the fraction of residues that are not modelled. The numeric value for each fraction is indicated below the corresponding segment, with a dot representing fractions  $\leq 5\%$ . The upper red bar (where present) indicates the fraction of residues that have poor fit to the electron density. The numeric value is given above the bar.

Mol	Chain	Length	Quality of chain
1	A	276	<div> <div>12%</div> <div> <div></div> <div>76%</div> <div>17%</div> <div>• 7%</div> </div> </div>
1	B	276	<div> <div>15%</div> <div> <div></div> <div>71%</div> <div>17%</div> <div>• 11%</div> </div> </div>

The following table lists non-polymeric compounds, carbohydrate monomers and non-standard residues in protein, DNA, RNA chains that are outliers for geometric or electron-density-fit criteria:

Mol	Type	Chain	Res	Chirality	Geometry	Clashes	Electron density
2	EJL	A	501	-	-	X	-

## 2 Entry composition [i](#)

There are 3 unique types of molecules in this entry. The entry contains 4169 atoms, of which 0 are hydrogens and 0 are deuteriums.

In the tables below, the ZeroOcc column contains the number of atoms modelled with zero occupancy, the AltConf column contains the number of residues with at least one atom in alternate conformation and the Trace column contains the number of residues modelled with at most 2 atoms.

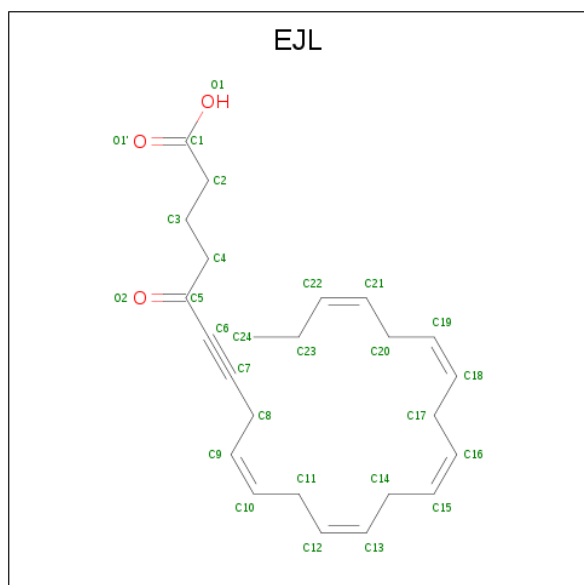
- Molecule 1 is a protein called Peroxisome proliferator-activated receptor gamma.

Mol	Chain	Residues	Atoms					ZeroOcc	AltConf	Trace
1	A	257	Total	C	N	O	S	0	0	0
			2031	1310	332	380	9			
1	B	246	Total	C	N	O	S	0	0	0
			1960	1268	319	364	9			

There are 4 discrepancies between the modelled and reference sequences:

Chain	Residue	Modelled	Actual	Comment	Reference
A	202	GLY	-	expression tag	UNP P37231
A	203	ALA	-	expression tag	UNP P37231
B	202	GLY	-	expression tag	UNP P37231
B	203	ALA	-	expression tag	UNP P37231

- Molecule 2 is (9Z,12Z,15Z,18Z,21Z)-5-oxidanylidene-tetracos-9,12,15,18,21-pentaen-6-ynoic acid (three-letter code: EYL) (formula: C<sub>24</sub>H<sub>32</sub>O<sub>3</sub>).



Mol	Chain	Residues	Atoms			ZeroOcc	AltConf
2	A	1	Total	C	O	0	0
			27	24	3		
2	A	1	Total	C	O	0	0
			27	24	3		
2	B	1	Total	C	O	0	0
			27	24	3		

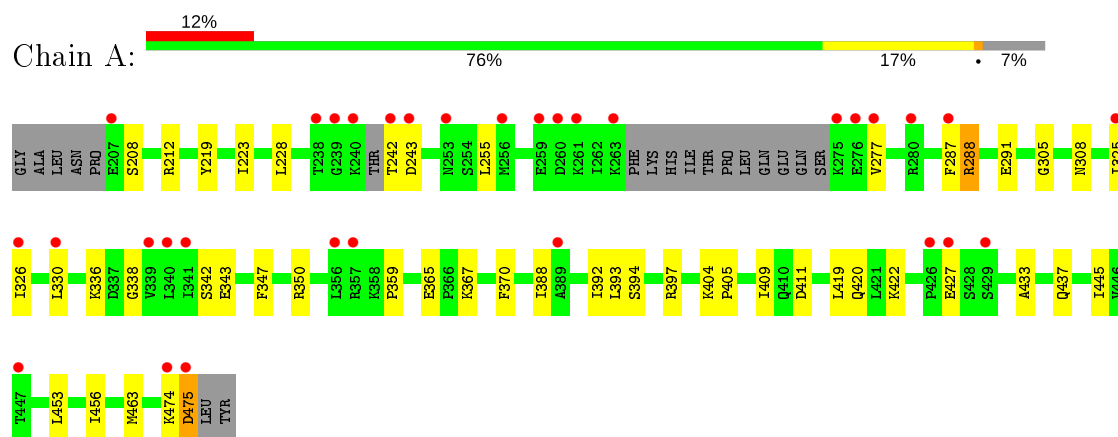
- Molecule 3 is water.

Mol	Chain	Residues	Atoms		ZeroOcc	AltConf
3	A	55	Total	O	0	0
			55	55		
3	B	42	Total	O	0	0
			42	42		

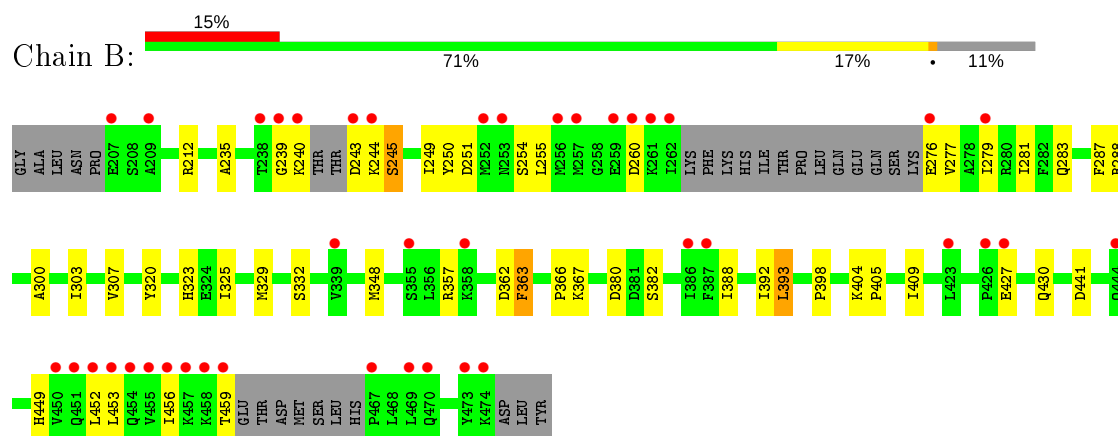
### 3 Residue-property plots [i](#)

These plots are drawn for all protein, RNA and DNA chains in the entry. The first graphic for a chain summarises the proportions of the various outlier classes displayed in the second graphic. The second graphic shows the sequence view annotated by issues in geometry and electron density. Residues are color-coded according to the number of geometric quality criteria for which they contain at least one outlier: green = 0, yellow = 1, orange = 2 and red = 3 or more. A red dot above a residue indicates a poor fit to the electron density ( $RSRZ > 2$ ). Stretches of 2 or more consecutive residues without any outlier are shown as a green connector. Residues present in the sample, but not in the model, are shown in grey.

- Molecule 1: Peroxisome proliferator-activated receptor gamma



- Molecule 1: Peroxisome proliferator-activated receptor gamma



## 4 Data and refinement statistics

Property	Value	Source
Space group	C 1 2 1	Depositor
Cell constants a, b, c, $\alpha$ , $\beta$ , $\gamma$	92.89 Å   61.17 Å   118.48 Å 90.00°   102.76°   90.00°	Depositor
Resolution (Å)	29.57 – 2.20 24.14 – 2.20	Depositor EDS
% Data completeness (in resolution range)	75.8 (29.57-2.20) 75.9 (24.14-2.20)	Depositor EDS
$R_{merge}$	0.06	Depositor
$R_{sym}$	(Not available)	Depositor
$\langle I/\sigma(I) \rangle$ <sup>1</sup>	6.28 (at 2.19 Å)	Xtriage
Refinement program	REFMAC 5.8.0049	Depositor
R, $R_{free}$	0.235   ,   0.310 0.242   ,   0.315	Depositor DCC
$R_{free}$ test set	1263 reflections (5.02%)	wwPDB-VP
Wilson B-factor (Å <sup>2</sup> )	20.4	Xtriage
Anisotropy	0.132	Xtriage
Bulk solvent $k_{sol}$ (e/Å <sup>3</sup> ), $B_{sol}$ (Å <sup>2</sup> )	0.57 , 75.4	EDS
L-test for twinning <sup>2</sup>	$\langle  L  \rangle = 0.44$ , $\langle L^2 \rangle = 0.27$	Xtriage
Estimated twinning fraction	No twinning to report.	Xtriage
$F_o, F_c$ correlation	0.88	EDS
Total number of atoms	4169	wwPDB-VP
Average B, all atoms (Å <sup>2</sup> )	33.0	wwPDB-VP

Xtriage's analysis on translational NCS is as follows: *The largest off-origin peak in the Patterson function is 8.32% of the height of the origin peak. No significant pseudotranslation is detected.*

<sup>1</sup>Intensities estimated from amplitudes.

<sup>2</sup>Theoretical values of  $\langle |L| \rangle$ ,  $\langle L^2 \rangle$  for acentric reflections are 0.5, 0.333 respectively for untwinned datasets, and 0.375, 0.2 for perfectly twinned datasets.

## 5 Model quality [i](#)

### 5.1 Standard geometry [i](#)

Bond lengths and bond angles in the following residue types are not validated in this section: EJJ

The Z score for a bond length (or angle) is the number of standard deviations the observed value is removed from the expected value. A bond length (or angle) with  $|Z| > 5$  is considered an outlier worth inspection. RMSZ is the root-mean-square of all Z scores of the bond lengths (or angles).

Mol	Chain	Bond lengths		Bond angles	
		RMSZ	$\# Z  > 5$	RMSZ	$\# Z  > 5$
1	A	0.65	0/2063	0.75	1/2782 (0.0%)
1	B	0.66	0/1990	0.75	3/2678 (0.1%)
All	All	0.66	0/4053	0.75	4/5460 (0.1%)

There are no bond length outliers.

All (4) bond angle outliers are listed below:

Mol	Chain	Res	Type	Atoms	Z	Observed(°)	Ideal(°)
1	B	212	ARG	NE-CZ-NH2	6.57	123.58	120.30
1	B	393	LEU	CA-CB-CG	-5.91	101.70	115.30
1	A	288	ARG	NE-CZ-NH1	5.27	122.94	120.30
1	B	357	ARG	NE-CZ-NH1	5.07	122.83	120.30

There are no chirality outliers.

There are no planarity outliers.

### 5.2 Too-close contacts [i](#)

In the following table, the Non-H and H(model) columns list the number of non-hydrogen atoms and hydrogen atoms in the chain respectively. The H(added) column lists the number of hydrogen atoms added and optimized by MolProbity. The Clashes column lists the number of clashes within the asymmetric unit, whereas Symm-Clashes lists symmetry related clashes.

Mol	Chain	Non-H	H(model)	H(added)	Clashes	Symm-Clashes
1	A	2031	0	2062	36	0
1	B	1960	0	2011	39	0
2	A	54	0	0	18	0
2	B	27	0	0	4	0
3	A	55	0	0	5	0

*Continued on next page...*



*Continued from previous page...*

Mol	Chain	Non-H	H(model)	H(added)	Clashes	Symm-Clashes
3	B	42	0	0	4	0
All	All	4169	0	4073	85	0

The all-atom clashscore is defined as the number of clashes found per 1000 atoms (including hydrogen atoms). The all-atom clashscore for this structure is 10.

All (85) close contacts within the same asymmetric unit are listed below, sorted by their clash magnitude.

Atom-1	Atom-2	Interatomic distance (Å)	Clash overlap (Å)
1:B:363:PHE:CE2	1:B:456:ILE:HD11	2.08	0.88
1:B:363:PHE:CZ	1:B:452:LEU:HB3	2.14	0.83
1:B:363:PHE:CE2	1:B:452:LEU:HB3	2.20	0.76
1:B:363:PHE:CE1	1:B:449:HIS:CD2	2.75	0.73
1:B:363:PHE:HE1	1:B:449:HIS:CD2	2.07	0.72
2:A:501:EJL:C22	2:A:502:EJL:C22	2.70	0.70
1:B:279:ILE:O	1:B:283:GLN:HG3	1.91	0.70
1:A:350:ARG:NH2	1:A:365:GLU:OE2	2.24	0.69
1:A:287:PHE:CE2	1:A:291:GLU:OE1	2.45	0.69
1:B:363:PHE:HE2	1:B:456:ILE:HD11	1.56	0.67
1:B:240:LYS:C	1:B:243:ASP:OD1	2.35	0.65
1:B:363:PHE:CZ	1:B:452:LEU:CB	2.79	0.65
1:B:288:ARG:HG2	2:B:501:EJL:C13	2.27	0.64
1:A:326:ILE:HG23	2:A:501:EJL:C2	2.27	0.64
1:B:456:ILE:O	1:B:459:THR:HG22	1.99	0.62
1:A:277:VAL:HG13	3:A:649:HOH:O	2.00	0.62
1:B:452:LEU:O	1:B:456:ILE:HG13	2.00	0.61
1:A:228:LEU:HB3	2:A:501:EJL:C15	2.30	0.61
1:A:342:SER:H	2:A:501:EJL:C21	2.15	0.60
2:A:501:EJL:C1	2:A:502:EJL:C9	2.80	0.60
1:A:325:ILE:HD11	1:A:392:ILE:HG12	1.85	0.59
1:B:380:ASP:OD1	1:B:382:SER:OG	2.14	0.59
1:A:343:GLU:H	2:A:501:EJL:C18	2.15	0.58
1:A:433:ALA:O	1:A:437:GLN:HG3	2.04	0.57
2:A:501:EJL:C22	2:A:502:EJL:C21	2.83	0.57
2:A:501:EJL:C4	2:A:502:EJL:C10	2.83	0.56
1:A:359:PRO:HG2	1:A:456:ILE:CD1	2.35	0.56
1:B:255:LEU:CD2	1:B:277:VAL:HG23	2.35	0.56
1:B:325:ILE:HG23	1:B:388:ILE:HD12	1.87	0.55
1:B:329:MET:O	1:B:332:SER:HB2	2.10	0.52
1:A:388:ILE:O	1:A:392:ILE:HG13	2.10	0.52
1:A:219:TYR:CE1	1:A:223:ILE:HD11	2.45	0.51

*Continued on next page...*

*Continued from previous page...*

Atom-1	Atom-2	Interatomic distance (Å)	Clash overlap (Å)
1:B:325:ILE:HD11	1:B:392:ILE:HG13	1.93	0.51
1:A:228:LEU:H	2:A:501:EJL:C12	2.23	0.51
1:A:359:PRO:HG2	1:A:456:ILE:HD13	1.93	0.51
1:B:427:GLU:HB2	3:B:639:HOH:O	2.12	0.51
1:B:307:VAL:HG22	3:B:614:HOH:O	2.09	0.50
1:A:288:ARG:NH2	2:A:501:EJL:C14	2.74	0.50
1:A:474:LYS:O	1:A:475:ASP:O	2.29	0.50
1:A:336:LYS:NZ	3:A:605:HOH:O	2.45	0.50
1:B:235:ALA:O	1:B:239:GLY:N	2.41	0.49
1:B:239:GLY:O	1:B:240:LYS:CB	2.61	0.49
1:A:325:ILE:HD11	1:A:392:ILE:CG1	2.41	0.49
1:A:338:GLY:HA3	1:A:347:PHE:CZ	2.47	0.49
2:A:501:EJL:C3	2:A:502:EJL:C10	2.90	0.48
2:A:502:EJL:C14	2:A:502:EJL:C8	2.90	0.48
1:A:370:PHE:HB2	1:A:445:ILE:HD11	1.95	0.48
1:B:250:TYR:CE2	1:B:254:SER:OG	2.66	0.48
1:A:277:VAL:CG1	3:A:649:HOH:O	2.58	0.48
1:A:393:LEU:CD2	1:A:409:ILE:HG21	2.44	0.48
1:B:288:ARG:HB2	2:B:501:EJL:C22	2.44	0.47
2:A:501:EJL:C9	3:A:654:HOH:O	2.62	0.47
1:B:287:PHE:CD2	2:B:501:EJL:C23	2.97	0.47
1:A:330:LEU:HD13	2:A:501:EJL:C4	2.44	0.47
1:A:305:GLY:HA2	1:A:308:ASN:HD22	1.80	0.46
1:B:453:LEU:HD23	1:B:456:ILE:HD12	1.97	0.46
1:B:287:PHE:HD2	2:B:501:EJL:C23	2.29	0.46
1:B:404:LYS:HB3	1:B:405:PRO:CD	2.45	0.45
1:B:281:ILE:HG21	1:B:348:MET:HE1	1.98	0.45
1:B:281:ILE:HD13	1:B:348:MET:HE3	1.97	0.45
1:A:242:THR:HG23	1:A:243:ASP:N	2.32	0.45
1:B:249:ILE:HA	1:B:254:SER:HB3	1.97	0.45
1:A:456:ILE:HG21	1:A:463:MET:HE1	1.99	0.45
2:A:501:EJL:C3	2:A:502:EJL:C9	2.95	0.44
2:A:501:EJL:C17	2:A:501:EJL:O2	2.65	0.44
1:A:255:LEU:HD21	1:A:277:VAL:HG23	2.00	0.44
1:A:394:SER:O	1:A:397:ARG:HG2	2.18	0.44
1:A:419:LEU:O	1:A:420:GLN:C	2.56	0.44
2:A:501:EJL:O1	2:A:502:EJL:C6	2.67	0.43
1:B:430:GLN:NE2	3:B:602:HOH:O	2.51	0.43
1:B:300:ALA:HA	1:B:303:ILE:HD12	2.00	0.43
1:A:208:SER:O	1:A:212:ARG:HG2	2.19	0.42
1:A:325:ILE:CD1	1:A:392:ILE:HG12	2.49	0.42

*Continued on next page...*

*Continued from previous page...*

Atom-1	Atom-2	Interatomic distance (Å)	Clash overlap (Å)
1:A:242:THR:HG23	1:A:243:ASP:H	1.85	0.42
1:B:323:HIS:HD2	3:B:618:HOH:O	2.01	0.42
1:B:362:ASP:O	1:B:366:PRO:HD2	2.19	0.42
1:B:244:LYS:HG2	1:B:245:SER:O	2.20	0.42
1:A:404:LYS:N	1:A:405:PRO:HD2	2.34	0.42
1:A:228:LEU:HD23	2:A:501:EJL:C16	2.49	0.41
1:A:370:PHE:CB	1:A:445:ILE:HD11	2.50	0.41
1:B:393:LEU:HD22	1:B:409:ILE:HB	2.01	0.41
1:B:255:LEU:HD23	1:B:277:VAL:HG23	2.01	0.41
1:B:320:TYR:CZ	1:B:398:PRO:HG2	2.56	0.41
1:A:404:LYS:HB2	3:A:631:HOH:O	2.19	0.41
1:B:363:PHE:CE1	1:B:449:HIS:HD2	2.34	0.40

There are no symmetry-related clashes.

## 5.3 Torsion angles ⓘ

### 5.3.1 Protein backbone ⓘ

In the following table, the Percentiles column shows the percent Ramachandran outliers of the chain as a percentile score with respect to all X-ray entries followed by that with respect to entries of similar resolution.

The Analysed column shows the number of residues for which the backbone conformation was analysed, and the total number of residues.

Mol	Chain	Analysed	Favoured	Allowed	Outliers	Percentiles	
1	A	251/276 (91%)	249 (99%)	2 (1%)	0	100	100
1	B	238/276 (86%)	234 (98%)	4 (2%)	0	100	100
All	All	489/552 (89%)	483 (99%)	6 (1%)	0	100	100

There are no Ramachandran outliers to report.

### 5.3.2 Protein sidechains ⓘ

In the following table, the Percentiles column shows the percent sidechain outliers of the chain as a percentile score with respect to all X-ray entries followed by that with respect to entries of similar resolution.

The Analysed column shows the number of residues for which the sidechain conformation was

analysed, and the total number of residues.

Mol	Chain	Analysed	Rotameric	Outliers	Percentiles	
1	A	223/247 (90%)	217 (97%)	6 (3%)	44	57
1	B	217/247 (88%)	210 (97%)	7 (3%)	39	50
All	All	440/494 (89%)	427 (97%)	13 (3%)	41	53

All (13) residues with a non-rotameric sidechain are listed below:

Mol	Chain	Res	Type
1	A	367	LYS
1	A	411	ASP
1	A	422	LYS
1	A	427	GLU
1	A	453	LEU
1	A	475	ASP
1	B	245	SER
1	B	251	ASP
1	B	260	ASP
1	B	276	GLU
1	B	363	PHE
1	B	367	LYS
1	B	441	ASP

Some sidechains can be flipped to improve hydrogen bonding and reduce clashes. All (8) such sidechains are listed below:

Mol	Chain	Res	Type
1	A	283	GLN
1	A	308	ASN
1	A	314	GLN
1	B	283	GLN
1	B	314	GLN
1	B	323	HIS
1	B	430	GLN
1	B	449	HIS

### 5.3.3 RNA ⓘ

There are no RNA molecules in this entry.

## 5.4 Non-standard residues in protein, DNA, RNA chains [i](#)

There are no non-standard protein/DNA/RNA residues in this entry.

## 5.5 Carbohydrates [i](#)

There are no carbohydrates in this entry.

## 5.6 Ligand geometry [i](#)

3 ligands are modelled in this entry.

In the following table, the Counts columns list the number of bonds (or angles) for which Mogul statistics could be retrieved, the number of bonds (or angles) that are observed in the model and the number of bonds (or angles) that are defined in the Chemical Component Dictionary. The Link column lists molecule types, if any, to which the group is linked. The Z score for a bond length (or angle) is the number of standard deviations the observed value is removed from the expected value. A bond length (or angle) with  $|Z| > 2$  is considered an outlier worth inspection. RMSZ is the root-mean-square of all Z scores of the bond lengths (or angles).

Mol	Type	Chain	Res	Link	Bond lengths			Bond angles		
					Counts	RMSZ	$\# Z  > 2$	Counts	RMSZ	$\# Z  > 2$
2	EJL	A	501	-	22,26,26	2.65	3 (13%)	20,27,27	1.74	3 (15%)
2	EJL	B	501	-	22,26,26	4.46	3 (13%)	20,27,27	5.06	2 (10%)
2	EJL	A	502	-	22,26,26	3.94	2 (9%)	20,27,27	5.53	2 (10%)

In the following table, the Chirals column lists the number of chiral outliers, the number of chiral centers analysed, the number of these observed in the model and the number defined in the Chemical Component Dictionary. Similar counts are reported in the Torsion and Rings columns. '-' means no outliers of that kind were identified.

Mol	Type	Chain	Res	Link	Chirals	Torsions	Rings
2	EJL	A	501	-	-	9/21/25/25	-
2	EJL	B	501	-	-	4/21/25/25	-
2	EJL	A	502	-	-	7/21/25/25	-

All (8) bond length outliers are listed below:

Mol	Chain	Res	Type	Atoms	Z	Observed(Å)	Ideal(Å)
2	B	501	EJL	C6-C7	20.00	1.36	1.19
2	A	502	EJL	C6-C7	17.46	1.34	1.19
2	A	501	EJL	C6-C5	-11.72	1.24	1.45

*Continued on next page...*

*Continued from previous page...*

Mol	Chain	Res	Type	Atoms	Z	Observed(Å)	Ideal(Å)
2	A	502	EJL	C8-C7	6.01	1.52	1.47
2	B	501	EJL	C8-C7	5.21	1.51	1.47
2	A	501	EJL	C6-C7	-2.97	1.17	1.19
2	B	501	EJL	C6-C5	2.68	1.50	1.45
2	A	501	EJL	C4-C5	-2.51	1.48	1.51

All (7) bond angle outliers are listed below:

Mol	Chain	Res	Type	Atoms	Z	Observed(°)	Ideal(°)
2	A	502	EJL	C7-C6-C5	-24.48	108.65	175.41
2	B	501	EJL	C7-C6-C5	-21.86	115.79	175.41
2	A	501	EJL	C9-C8-C7	-6.47	105.19	113.06
2	B	501	EJL	C9-C8-C7	-5.23	106.70	113.06
2	A	501	EJL	C2-C3-C4	-2.41	106.40	114.34
2	A	502	EJL	C9-C8-C7	-2.19	110.39	113.06
2	A	501	EJL	C16-C17-C18	-2.11	101.62	112.02

There are no chirality outliers.

All (20) torsion outliers are listed below:

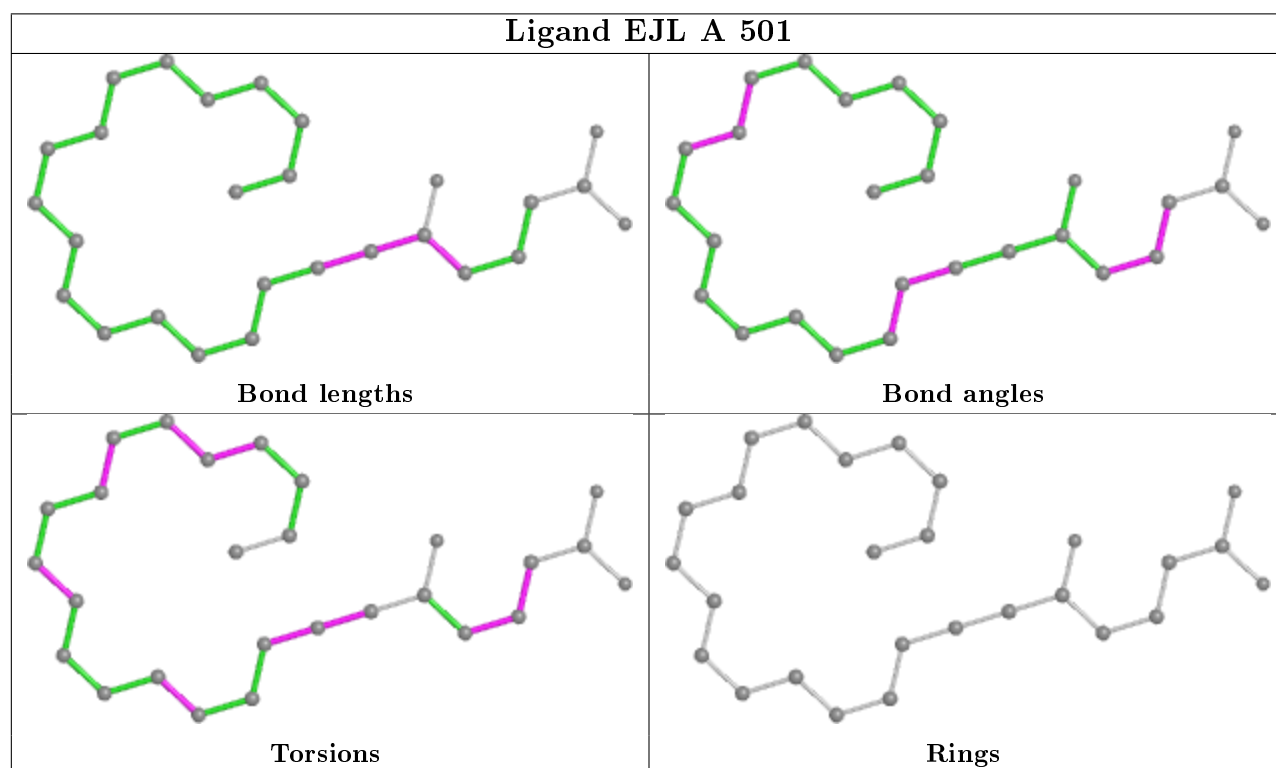
Mol	Chain	Res	Type	Atoms
2	A	501	EJL	C19-C20-C21-C22
2	A	501	EJL	C5-C6-C7-C8
2	A	501	EJL	C1-C2-C3-C4
2	B	501	EJL	C1-C2-C3-C4
2	A	502	EJL	C5-C6-C7-C8
2	A	502	EJL	C3-C4-C5-C6
2	A	502	EJL	C1-C2-C3-C4
2	A	501	EJL	C2-C3-C4-C5
2	B	501	EJL	C3-C4-C5-O2
2	A	501	EJL	C18-C19-C20-C21
2	A	501	EJL	C16-C17-C18-C19
2	A	501	EJL	C13-C14-C15-C16
2	B	501	EJL	C12-C13-C14-C15
2	B	501	EJL	C10-C11-C12-C13
2	A	502	EJL	C3-C4-C5-O2
2	A	502	EJL	C6-C7-C8-C9
2	A	501	EJL	C9-C10-C11-C12
2	A	502	EJL	C18-C19-C20-C21
2	A	502	EJL	C21-C22-C23-C24
2	A	501	EJL	C6-C7-C8-C9

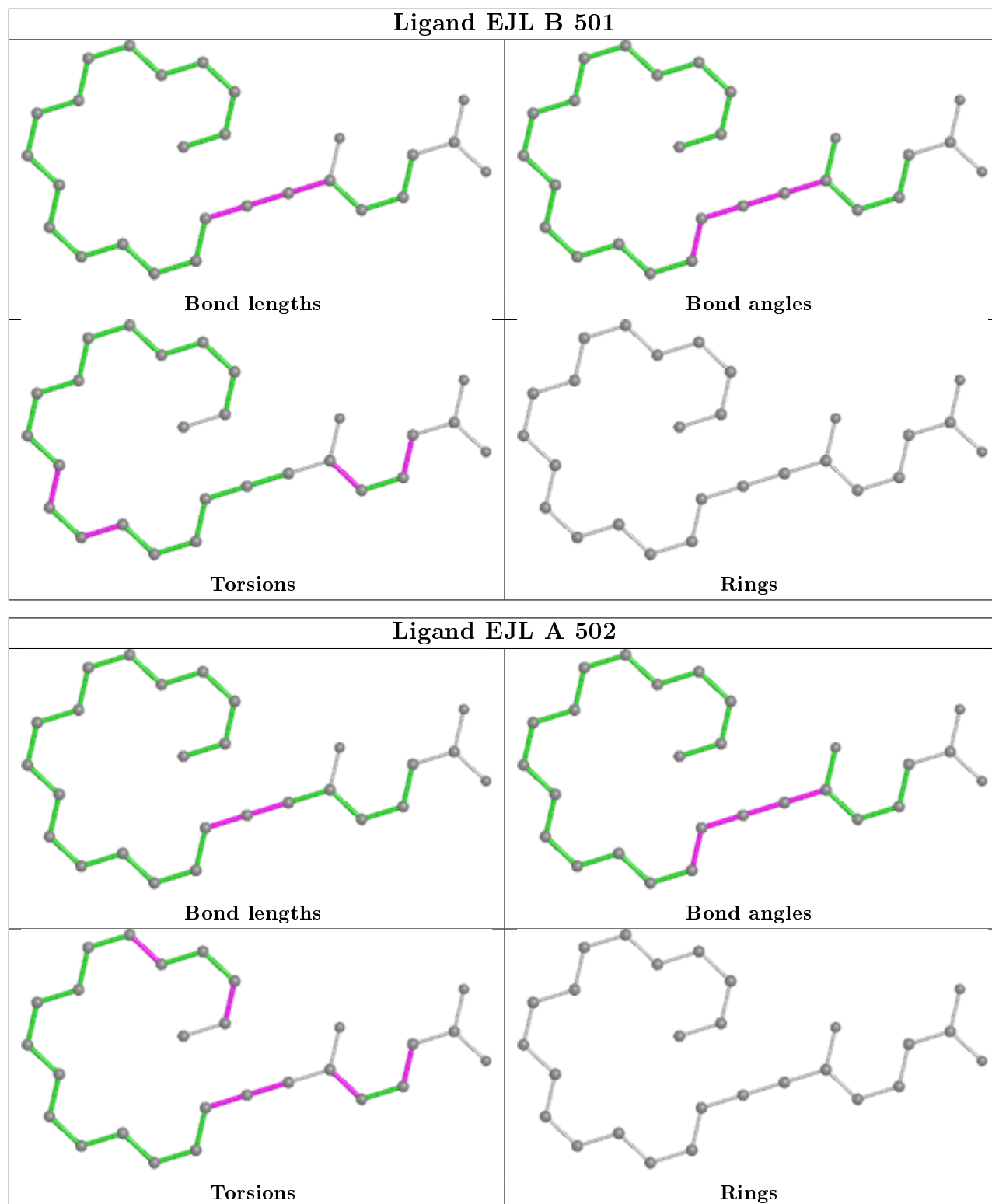
There are no ring outliers.

3 monomers are involved in 22 short contacts:

Mol	Chain	Res	Type	Clashes	Symm-Clashes
2	A	501	EJL	17	0
2	B	501	EJL	4	0
2	A	502	EJL	8	0

The following is a two-dimensional graphical depiction of Mogul quality analysis of bond lengths, bond angles, torsion angles, and ring geometry for all instances of the Ligand of Interest. In addition, ligands with molecular weight > 250 and outliers as shown on the validation Tables will also be included. For torsion angles, if less than 5% of the Mogul distribution of torsion angles is within 10 degrees of the torsion angle in question, then that torsion angle is considered an outlier. Any bond that is central to one or more torsion angles identified as an outlier by Mogul will be highlighted in the graph. For rings, the root-mean-square deviation (RMSD) between the ring in question and similar rings identified by Mogul is calculated over all ring torsion angles. If the average RMSD is greater than 60 degrees and the minimal RMSD between the ring in question and any Mogul-identified rings is also greater than 60 degrees, then that ring is considered an outlier. The outliers are highlighted in purple. The color gray indicates Mogul did not find sufficient equivalents in the CSD to analyse the geometry.





## 5.7 Other polymers ⓘ

There are no such residues in this entry.



## 5.8 Polymer linkage issues ⓘ

There are no chain breaks in this entry.

## 6 Fit of model and data

### 6.1 Protein, DNA and RNA chains

In the following table, the column labelled ‘#RSRZ> 2’ contains the number (and percentage) of RSRZ outliers, followed by percent RSRZ outliers for the chain as percentile scores relative to all X-ray entries and entries of similar resolution. The OWAB column contains the minimum, median, 95<sup>th</sup> percentile and maximum values of the occupancy-weighted average B-factor per residue. The column labelled ‘Q< 0.9’ lists the number of (and percentage) of residues with an average occupancy less than 0.9.

Mol	Chain	Analysed	<RSRZ>	#RSRZ>2		OWAB(Å <sup>2</sup> )	Q<0.9
1	A	257/276 (93%)	0.79	32 (12%)	3 3	20, 31, 45, 55	0
1	B	246/276 (89%)	0.85	41 (16%)	1 1	20, 32, 49, 57	0
All	All	503/552 (91%)	0.82	73 (14%)	2 2	20, 31, 49, 57	0

All (73) RSRZ outliers are listed below:

Mol	Chain	Res	Type	RSRZ
1	B	459	THR	5.5
1	B	262	ILE	5.2
1	B	260	ASP	5.0
1	A	275	LYS	5.0
1	B	243	ASP	4.7
1	A	259	GLU	4.5
1	B	256	MET	4.4
1	B	207	GLU	4.3
1	B	474	LYS	4.2
1	A	260	ASP	4.1
1	B	467	PRO	4.1
1	B	238	THR	4.1
1	B	455	VAL	3.7
1	A	263	LYS	3.7
1	B	239	GLY	3.6
1	A	427	GLU	3.6
1	B	454	GLN	3.5
1	B	259	GLU	3.4
1	B	470	GLN	3.3
1	A	238	THR	3.2
1	B	358	LYS	3.1
1	B	209	ALA	3.1
1	A	475	ASP	3.1
1	B	261	LYS	3.1

*Continued on next page...*

*Continued from previous page...*

Mol	Chain	Res	Type	RSRZ
1	B	457	LYS	3.0
1	A	429	SER	3.0
1	A	474	LYS	2.9
1	A	256	MET	2.8
1	A	261	LYS	2.8
1	A	277	VAL	2.7
1	B	458	LYS	2.7
1	A	287	PHE	2.7
1	B	257	MET	2.6
1	B	427	GLU	2.6
1	B	426	PRO	2.6
1	A	325	ILE	2.6
1	B	252	MET	2.5
1	B	469	LEU	2.5
1	B	450	VAL	2.5
1	B	253	ASN	2.5
1	A	339	VAL	2.5
1	A	276	GLU	2.5
1	B	355	SER	2.5
1	A	357	ARG	2.5
1	B	453	LEU	2.4
1	B	276	GLU	2.4
1	A	240	LYS	2.4
1	B	240	LYS	2.4
1	B	451	GLN	2.3
1	B	244	LYS	2.3
1	A	280	ARG	2.3
1	A	207	GLU	2.3
1	B	444	GLN	2.3
1	A	326	ILE	2.3
1	B	386	ILE	2.2
1	A	426	PRO	2.2
1	B	339	VAL	2.2
1	A	239	GLY	2.2
1	A	330	LEU	2.2
1	A	253	ASN	2.2
1	B	423	LEU	2.1
1	A	341	ILE	2.1
1	A	243	ASP	2.1
1	A	242	THR	2.1
1	B	452	LEU	2.1
1	A	389	ALA	2.1

*Continued on next page...*

*Continued from previous page...*

Mol	Chain	Res	Type	RSRZ
1	A	340	LEU	2.1
1	A	356	LEU	2.1
1	B	279	ILE	2.0
1	B	456	ILE	2.0
1	B	387	PHE	2.0
1	B	473	TYR	2.0
1	A	447	THR	2.0

## 6.2 Non-standard residues in protein, DNA, RNA chains [i](#)

There are no non-standard protein/DNA/RNA residues in this entry.

## 6.3 Carbohydrates [i](#)

There are no carbohydrates in this entry.

## 6.4 Ligands [i](#)

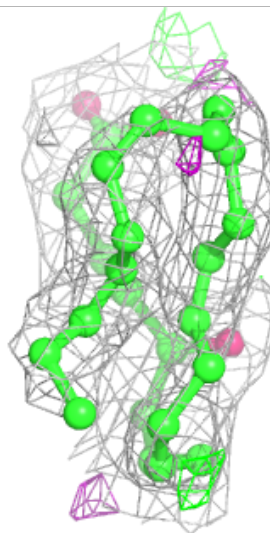
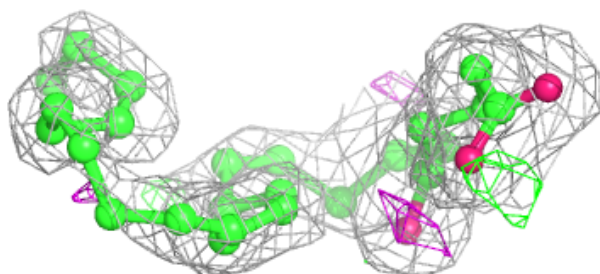
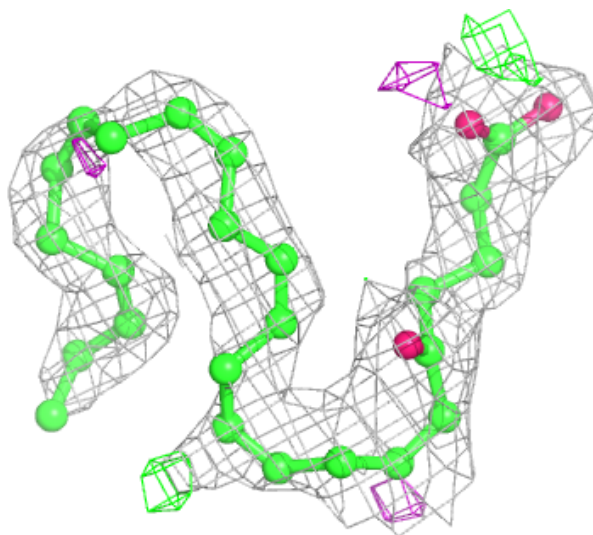
In the following table, the Atoms column lists the number of modelled atoms in the group and the number defined in the chemical component dictionary. The B-factors column lists the minimum, median, 95<sup>th</sup> percentile and maximum values of B factors of atoms in the group. The column labelled 'Q< 0.9' lists the number of atoms with occupancy less than 0.9.

Mol	Type	Chain	Res	Atoms	RSCC	RSR	B-factors( $\text{\AA}^2$ )	Q<0.9
2	EJL	B	501	27/27	0.72	0.26	43,50,55,57	0
2	EJL	A	502	27/27	0.87	0.32	40,48,51,57	0
2	EJL	A	501	27/27	0.89	0.21	30,37,51,59	0

The following is a graphical depiction of the model fit to experimental electron density of all instances of the Ligand of Interest. In addition, ligands with molecular weight > 250 and outliers as shown on the geometry validation Tables will also be included. Each fit is shown from different orientation to approximate a three-dimensional view.

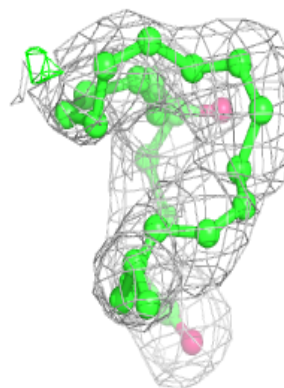
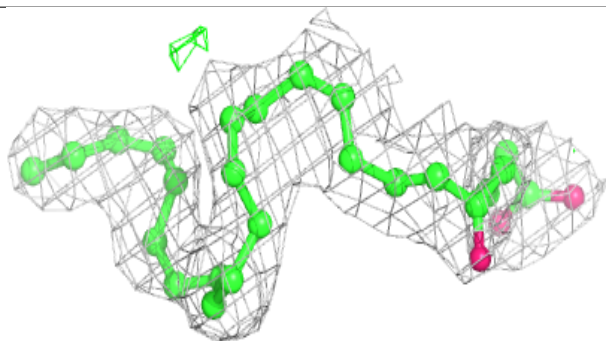
**Electron density around EJL B 501:**

$2mF_o-DF_c$  (at 0.7 rmsd) in gray  
 $mF_o-DF_c$  (at 3 rmsd) in purple (negative)  
and green (positive)



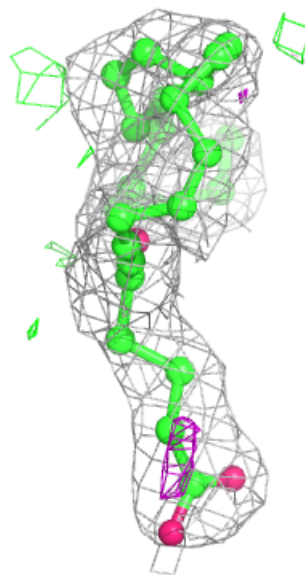
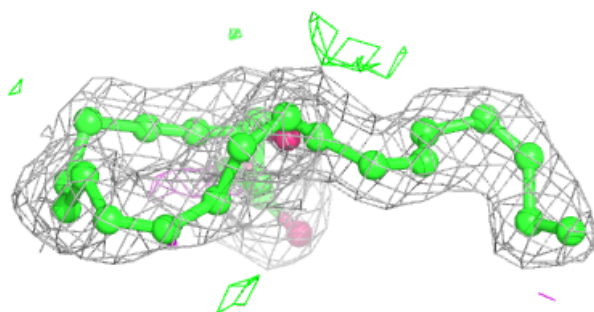
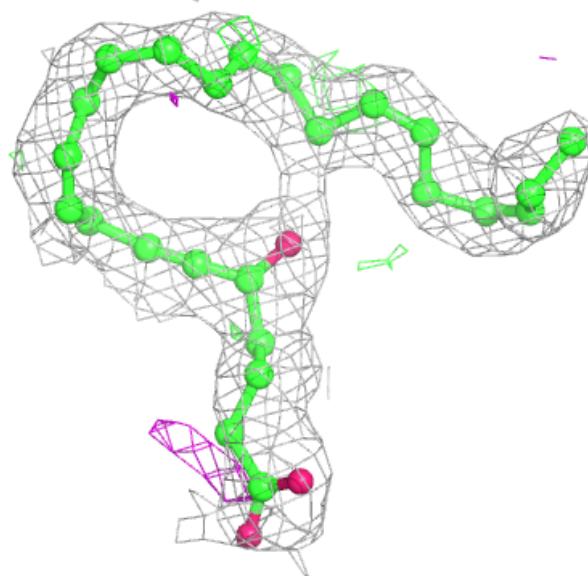
**Electron density around EYL A 502:**

$2mF_o - DF_c$  (at 0.7 rmsd) in gray  
 $mF_o - DF_c$  (at 3 rmsd) in purple (negative)  
and green (positive)



**Electron density around EYL A 501:**

$2mF_o-DF_c$  (at 0.7 rmsd) in gray  
 $mF_o-DF_c$  (at 3 rmsd) in purple (negative)  
and green (positive)



## 6.5 Other polymers ⓘ

There are no such residues in this entry.