



# Full wwPDB X-ray Structure Validation Report ⓘ

May 25, 2020 – 04:00 am BST

PDB ID : 2JGV  
Title : STRUCTURE OF Staphylococcus aureus D-TAGATOSE-6-PHOSPHATE  
KINASE in complex with ADP  
Authors : Miallau, L.; Hunter, W.N.; McSweeney, S.M.; Leonard, G.A.  
Deposited on : 2007-02-16  
Resolution : 2.00 Å(reported)

This is a Full wwPDB X-ray Structure Validation Report for a publicly released PDB entry.

We welcome your comments at [validation@mail.wwpdb.org](mailto:validation@mail.wwpdb.org)

A user guide is available at

<https://www.wwpdb.org/validation/2017/XrayValidationReportHelp>

with specific help available everywhere you see the ⓘ symbol.

---

The following versions of software and data (see [references ⓘ](#)) were used in the production of this report:

MolProbity : 4.02b-467  
Mogul : 1.8.5 (274361), CSD as541be (2020)  
Xtriage (Phenix) : 1.13  
EDS : 2.11  
buster-report : 1.1.7 (2018)  
Percentile statistics : 20191225.v01 (using entries in the PDB archive December 25th 2019)  
Refmac : 5.8.0158  
CCP4 : 7.0.044 (Gargrove)  
Ideal geometry (proteins) : Engh & Huber (2001)  
Ideal geometry (DNA, RNA) : Parkinson et al. (1996)  
Validation Pipeline (wwPDB-VP) : 2.11

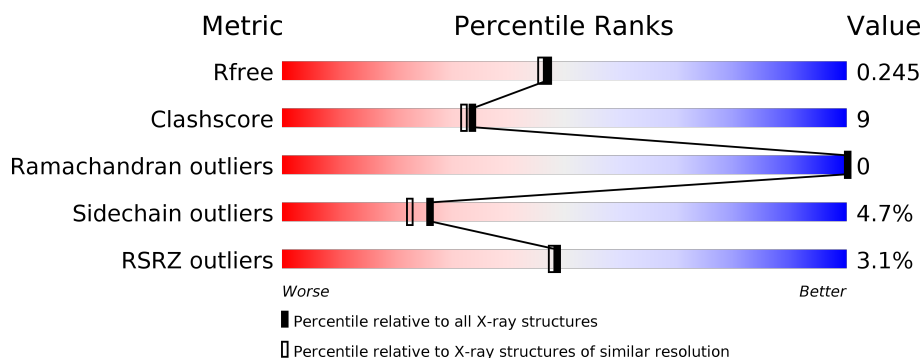
# 1 Overall quality at a glance

The following experimental techniques were used to determine the structure:

## *X-RAY DIFFRACTION*

The reported resolution of this entry is 2.00 Å.

Percentile scores (ranging between 0-100) for global validation metrics of the entry are shown in the following graphic. The table shows the number of entries on which the scores are based.



Metric	Whole archive (#Entries)	Similar resolution (#Entries, resolution range(Å))
$R_{free}$	130704	8085 (2.00-2.00)
Clashscore	141614	9178 (2.00-2.00)
Ramachandran outliers	138981	9054 (2.00-2.00)
Sidechain outliers	138945	9053 (2.00-2.00)
RSRZ outliers	127900	7900 (2.00-2.00)

The table below summarises the geometric issues observed across the polymeric chains and their fit to the electron density. The red, orange, yellow and green segments on the lower bar indicate the fraction of residues that contain outliers for  $\geq 3$ , 2, 1 and 0 types of geometric quality criteria respectively. A grey segment represents the fraction of residues that are not modelled. The numeric value for each fraction is indicated below the corresponding segment, with a dot representing fractions  $\leq 5\%$ . The upper red bar (where present) indicates the fraction of residues that have poor fit to the electron density. The numeric value is given above the bar.

Mol	Chain	Length	Quality of chain
1	A	330	<div> <div>2%</div> <div> <div></div> <div>82%</div> <div>12%</div> <div>• 5%</div> </div> </div>
1	B	330	<div> <div>2%</div> <div> <div></div> <div>79%</div> <div>15%</div> <div>• 5%</div> </div> </div>
1	C	330	<div> <div>2%</div> <div> <div></div> <div>77%</div> <div>16%</div> <div>• 6%</div> </div> </div>
1	D	330	<div> <div>7%</div> <div> <div></div> <div>75%</div> <div>17%</div> <div>• 6%</div> </div> </div>

## 2 Entry composition [i](#)

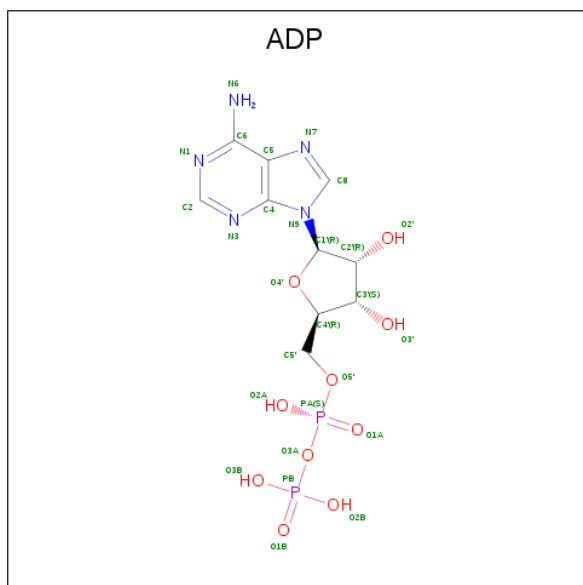
There are 3 unique types of molecules in this entry. The entry contains 10264 atoms, of which 0 are hydrogens and 0 are deuteriums.

In the tables below, the ZeroOcc column contains the number of atoms modelled with zero occupancy, the AltConf column contains the number of residues with at least one atom in alternate conformation and the Trace column contains the number of residues modelled with at most 2 atoms.

- Molecule 1 is a protein called TAGATOSE-6-PHOSPHATE KINASE.

Mol	Chain	Residues	Atoms						ZeroOcc	AltConf	Trace
1	A	315	Total	C	N	O	S	Se	0	0	0
			2419	1532	411	471	3	2			
1	B	314	Total	C	N	O	S	Se	0	0	0
			2416	1529	410	472	3	2			
1	C	311	Total	C	N	O	S	Se	0	0	0
			2395	1518	404	468	3	2			
1	D	311	Total	C	N	O	S	Se	0	0	0
			2389	1512	403	469	3	2			

- Molecule 2 is ADENOSINE-5'-DIPHOSPHATE (three-letter code: ADP) (formula:  $C_{10}H_{15}N_5O_{10}P_2$ ).



Mol	Chain	Residues	Atoms					ZeroOcc	AltConf
2	B	1	Total	C	N	O	P	0	0
			27	10	5	10	2		
2	D	1	Total	C	N	O	P	0	0
			27	10	5	10	2		


- Molecule 3 is water.

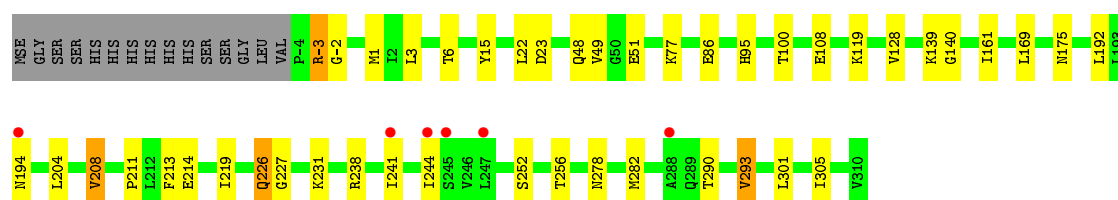
Mol	Chain	Residues	Atoms		ZeroOcc	AltConf
3	A	180	Total 180	O 180	0	0
3	B	147	Total 147	O 147	0	0
3	C	141	Total 141	O 141	0	0
3	D	123	Total 123	O 123	0	0

### 3 Residue-property plots [i](#)


These plots are drawn for all protein, RNA and DNA chains in the entry. The first graphic for a chain summarises the proportions of the various outlier classes displayed in the second graphic. The second graphic shows the sequence view annotated by issues in geometry and electron density. Residues are color-coded according to the number of geometric quality criteria for which they contain at least one outlier: green = 0, yellow = 1, orange = 2 and red = 3 or more. A red dot above a residue indicates a poor fit to the electron density ( $RSRZ > 2$ ). Stretches of 2 or more consecutive residues without any outlier are shown as a green connector. Residues present in the sample, but not in the model, are shown in grey.

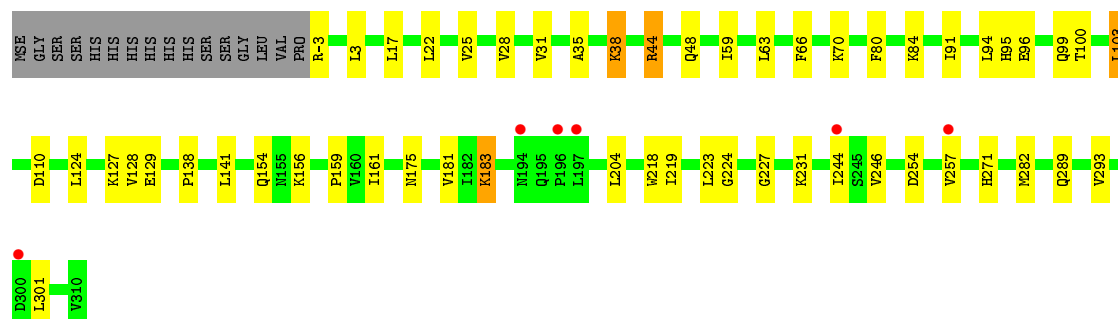
#### • Molecule 1: TAGATOSE-6-PHOSPHATE KINASE

Chain A: 




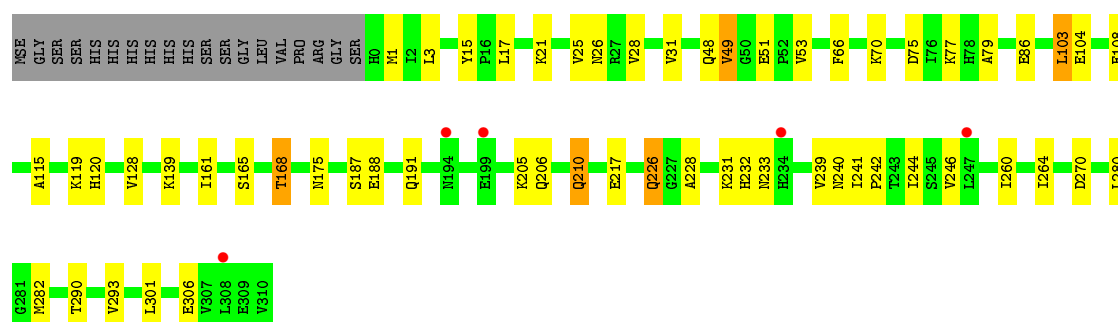
#### • Molecule 1: TAGATOSE-6-PHOSPHATE KINASE

Chain B: 

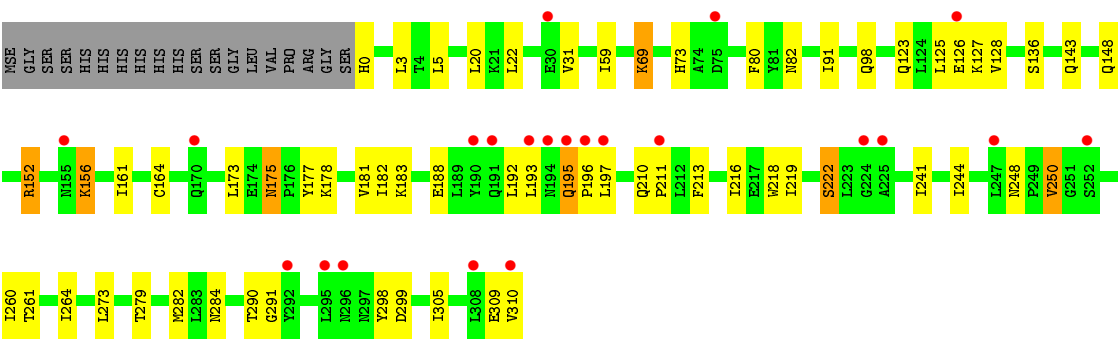
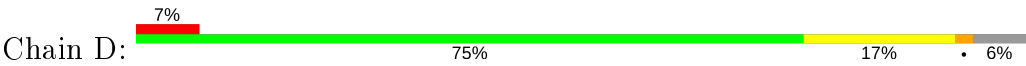


#### • Molecule 1: TAGATOSE-6-PHOSPHATE KINASE

Chain C: 



● Molecule 1: TAGATOSE-6-PHOSPHATE KINASE



## 4 Data and refinement statistics

Property	Value	Source
Space group	P 1 21 1	Depositor
Cell constants a, b, c, $\alpha$ , $\beta$ , $\gamma$	77.55Å 96.38Å 94.84Å 90.00° 94.29° 90.00°	Depositor
Resolution (Å)	38.20 – 2.00 31.56 – 2.00	Depositor EDS
% Data completeness (in resolution range)	98.3 (38.20-2.00) 98.4 (31.56-2.00)	Depositor EDS
$R_{merge}$	0.07	Depositor
$R_{sym}$	(Not available)	Depositor
$\langle I/\sigma(I) \rangle$ <sup>1</sup>	2.31 (at 2.00Å)	Xtriage
Refinement program	REFMAC 5.2.0005	Depositor
R, $R_{free}$	0.198 , 0.247 0.199 , 0.245	Depositor DCC
$R_{free}$ test set	4672 reflections (5.06%)	wwPDB-VP
Wilson B-factor (Å <sup>2</sup> )	27.9	Xtriage
Anisotropy	0.198	Xtriage
Bulk solvent $k_{sol}$ (e/Å <sup>3</sup> ), $B_{sol}$ (Å <sup>2</sup> )	0.34 , 45.6	EDS
L-test for twinning <sup>2</sup>	$\langle  L  \rangle = 0.49$ , $\langle L^2 \rangle = 0.32$	Xtriage
Estimated twinning fraction	No twinning to report.	Xtriage
$F_o, F_c$ correlation	0.95	EDS
Total number of atoms	10264	wwPDB-VP
Average B, all atoms (Å <sup>2</sup> )	32.0	wwPDB-VP

Xtriage's analysis on translational NCS is as follows: *The largest off-origin peak in the Patterson function is 3.83% of the height of the origin peak. No significant pseudotranslation is detected.*

<sup>1</sup>Intensities estimated from amplitudes.

<sup>2</sup>Theoretical values of  $\langle |L| \rangle$ ,  $\langle L^2 \rangle$  for acentric reflections are 0.5, 0.333 respectively for untwinned datasets, and 0.375, 0.2 for perfectly twinned datasets.

## 5 Model quality [i](#)

### 5.1 Standard geometry [i](#)

Bond lengths and bond angles in the following residue types are not validated in this section: ADP

The Z score for a bond length (or angle) is the number of standard deviations the observed value is removed from the expected value. A bond length (or angle) with  $|Z| > 5$  is considered an outlier worth inspection. RMSZ is the root-mean-square of all Z scores of the bond lengths (or angles).

Mol	Chain	Bond lengths		Bond angles	
		RMSZ	$\# Z  > 5$	RMSZ	$\# Z  > 5$
1	A	0.46	0/2458	0.55	0/3335
1	B	0.44	0/2455	0.55	1/3332 (0.0%)
1	C	0.44	0/2434	0.53	0/3305
1	D	0.40	0/2424	0.55	0/3287
All	All	0.44	0/9771	0.55	1/13259 (0.0%)

There are no bond length outliers.

All (1) bond angle outliers are listed below:

Mol	Chain	Res	Type	Atoms	Z	Observed(°)	Ideal(°)
1	B	44	ARG	NE-CZ-NH2	-5.58	117.51	120.30

There are no chirality outliers.

There are no planarity outliers.

### 5.2 Too-close contacts [i](#)

In the following table, the Non-H and H(model) columns list the number of non-hydrogen atoms and hydrogen atoms in the chain respectively. The H(added) column lists the number of hydrogen atoms added and optimized by MolProbity. The Clashes column lists the number of clashes within the asymmetric unit, whereas Symm-Clashes lists symmetry related clashes.

Mol	Chain	Non-H	H(model)	H(added)	Clashes	Symm-Clashes
1	A	2419	0	2424	39	0
1	B	2416	0	2422	41	0
1	C	2395	0	2401	46	0
1	D	2389	0	2384	48	0
2	B	27	0	12	1	0
2	D	27	0	12	1	0

*Continued on next page...*



*Continued from previous page...*

Mol	Chain	Non-H	H(model)	H(added)	Clashes	Symm-Clashes
3	A	180	0	0	7	0
3	B	147	0	0	10	0
3	C	141	0	0	5	0
3	D	123	0	0	12	0
All	All	10264	0	9655	165	0

The all-atom clashscore is defined as the number of clashes found per 1000 atoms (including hydrogen atoms). The all-atom clashscore for this structure is 9.

All (165) close contacts within the same asymmetric unit are listed below, sorted by their clash magnitude.

Atom-1	Atom-2	Interatomic distance (Å)	Clash overlap (Å)
1:C:1:MSE:HE1	1:C:77:LYS:CE	1.78	1.12
1:C:1:MSE:HE1	1:C:77:LYS:HE3	1.33	1.08
1:D:282:MSE:SE	3:D:2111:HOH:O	2.28	1.00
1:D:148:GLN:HG3	3:D:2092:HOH:O	1.62	0.99
1:D:69:LYS:HD3	1:D:73:HIS:CE1	2.00	0.96
1:B:244:ILE:HG21	1:B:282:MSE:HE3	1.47	0.95
1:C:21:LYS:H	1:C:26:ASN:HD21	1.08	0.92
1:D:210:GLN:HG3	1:D:211:PRO:HD2	1.55	0.87
1:B:282:MSE:HE1	1:B:301:LEU:HD22	1.57	0.85
1:C:210:GLN:HE21	1:C:210:GLN:HA	1.40	0.84
1:D:241:ILE:HD12	1:D:282:MSE:HE3	1.59	0.83
1:B:103:LEU:HD22	1:C:25:VAL:HG13	1.61	0.82
1:C:1:MSE:HE1	1:C:77:LYS:HE2	1.60	0.81
1:A:-3:ARG:HH11	1:A:-3:ARG:HG2	1.44	0.80
1:A:1:MSE:CE	3:A:2016:HOH:O	2.29	0.80
1:C:232:HIS:HD2	1:C:270:ASP:OD2	1.63	0.79
1:D:136:SER:HA	3:D:2086:HOH:O	1.83	0.79
1:D:127:LYS:CA	1:D:128:VAL:N	2.47	0.78
1:D:284:ASN:HD21	1:D:291:GLY:H	1.29	0.78
1:C:231:LYS:NZ	1:C:233:ASN:O	2.15	0.77
1:B:224:GLY:O	3:B:2114:HOH:O	2.04	0.76
1:A:241:ILE:HD11	1:A:278:ASN:HB3	1.68	0.74
1:C:1:MSE:CE	1:C:77:LYS:CE	2.62	0.74
1:B:103:LEU:HD22	1:C:25:VAL:CG1	2.19	0.73
1:B:282:MSE:HE2	1:B:301:LEU:HD13	1.72	0.72
1:B:25:VAL:HG13	1:C:103:LEU:HD22	1.72	0.71
1:C:120:HIS:HD2	3:C:2070:HOH:O	1.74	0.71
1:A:252:SER:O	1:A:256:THR:HG23	1.91	0.71
1:B:282:MSE:CE	1:B:301:LEU:HD22	2.22	0.70

*Continued on next page...*

*Continued from previous page...*

Atom-1	Atom-2	Interatomic distance (Å)	Clash overlap (Å)
1:B:110:ASP:OD2	3:B:2069:HOH:O	2.09	0.70
1:B:227:GLY:O	3:B:2114:HOH:O	2.08	0.70
1:B:35:ALA:O	1:B:44:ARG:NH2	2.16	0.68
1:C:48:GLN:HE22	1:C:293:VAL:H	1.39	0.68
1:B:183:LYS:NZ	3:B:2105:HOH:O	2.26	0.67
1:B:66:PHE:CZ	1:B:70:LYS:HE3	2.29	0.67
1:C:21:LYS:H	1:C:26:ASN:ND2	1.87	0.67
1:A:226:GLN:HB3	1:A:238:ARG:HH22	1.59	0.67
1:A:86:GLU:CG	3:D:2012:HOH:O	2.44	0.66
1:D:123:GLN:HB2	3:D:2083:HOH:O	1.96	0.65
1:A:241:ILE:HG23	1:A:282:MSE:SE	2.48	0.64
1:C:240:ASN:HB2	1:C:306:GLU:HG2	1.82	0.62
1:D:210:GLN:CG	1:D:211:PRO:HD2	2.29	0.62
1:D:127:LYS:O	1:D:128:VAL:N	2.33	0.61
1:A:211:PRO:O	1:A:214:GLU:HG2	1.99	0.61
1:D:222:SER:HB2	3:D:2106:HOH:O	2.00	0.60
1:A:-2:GLY:N	1:A:-2:GLY:C	2.54	0.60
1:D:195:GLN:HG2	1:D:196:PRO:HD2	1.84	0.60
1:D:164:CYS:HB2	3:D:2096:HOH:O	2.01	0.60
1:C:242:PRO:O	1:C:282:MSE:HE1	2.01	0.59
1:C:1:MSE:CE	1:C:77:LYS:HE2	2.29	0.59
1:A:-3:ARG:NH1	1:A:-3:ARG:HG2	2.17	0.59
1:B:48:GLN:HE22	1:B:293:VAL:H	1.51	0.59
1:B:38:LYS:HE2	1:B:254:ASP:OD1	2.03	0.58
1:C:168:THR:CG2	3:C:2097:HOH:O	2.52	0.58
1:A:226:GLN:HE21	1:A:226:GLN:H	1.51	0.57
1:C:108:GLU:HG2	1:C:139:LYS:HG2	1.87	0.57
1:C:48:GLN:NE2	3:C:2030:HOH:O	2.37	0.57
1:A:169:LEU:HD23	1:A:192:LEU:HD11	1.88	0.56
1:D:175:ASN:ND2	1:D:177:TYR:H	2.04	0.55
1:B:59:ILE:HG12	1:B:80:PHE:HB3	1.89	0.55
1:B:25:VAL:CG1	1:C:103:LEU:HD22	2.35	0.55
1:A:226:GLN:N	1:A:226:GLN:HE21	2.04	0.55
1:C:79:ALA:O	1:C:120:HIS:HE1	1.90	0.55
1:A:95:HIS:HE1	1:A:100:THR:OG1	1.91	0.54
1:B:94:LEU:CD2	1:B:99:GLN:HG3	2.38	0.54
1:B:271:HIS:HD2	3:B:2130:HOH:O	1.91	0.53
1:A:95:HIS:HD2	3:A:2078:HOH:O	1.92	0.53
1:B:91:ILE:HD12	1:C:15:TYR:CE1	2.43	0.53
1:D:222:SER:CB	3:D:2106:HOH:O	2.56	0.53
1:B:219:ILE:HD12	1:B:231:LYS:HE3	1.89	0.53

*Continued on next page...*

*Continued from previous page...*

Atom-1	Atom-2	Interatomic distance (Å)	Clash overlap (Å)
1:C:66:PHE:CZ	1:C:70:LYS:HE2	2.44	0.53
1:D:20:LEU:HD11	1:D:22:LEU:HD23	1.90	0.53
1:B:183:LYS:HD3	1:B:257:VAL:HG22	1.91	0.52
1:A:1:MSE:HE1	3:A:2016:HOH:O	2.01	0.51
1:D:244:ILE:HD11	2:D:1311:ADP:C2	2.46	0.51
1:B:17:LEU:CD2	1:B:28:VAL:HG22	2.40	0.51
1:B:129:GLU:O	1:B:159:PRO:HD2	2.11	0.51
1:D:309:GLU:O	1:D:309:GLU:N	2.42	0.51
1:D:148:GLN:OE1	1:D:152:ARG:NH2	2.42	0.51
1:D:305:ILE:HD11	3:D:2111:HOH:O	2.09	0.51
1:C:187:SER:O	1:C:191:GLN:HG3	2.11	0.51
1:D:20:LEU:HD11	1:D:22:LEU:CD2	2.42	0.50
1:A:3:ARG:NE	3:A:2002:HOH:O	2.40	0.50
1:C:21:LYS:N	1:C:26:ASN:HD21	1.91	0.50
1:B:3:LEU:HB2	1:B:128:VAL:HG11	1.93	0.50
1:D:181:VAL:HG22	1:D:218:TRP:HB2	1.93	0.49
1:B:94:LEU:HD23	1:B:99:GLN:HG3	1.94	0.49
1:D:284:ASN:ND2	1:D:291:GLY:H	2.05	0.49
1:A:227:GLY:HA2	1:A:241:ILE:HD12	1.95	0.49
1:C:49:VAL:HG12	1:C:51:GLU:HG2	1.95	0.49
1:A:77:LYS:HE3	3:A:2064:HOH:O	2.12	0.48
1:D:284:ASN:HD21	1:D:291:GLY:N	2.02	0.48
1:B:183:LYS:HD3	1:B:257:VAL:CG2	2.43	0.48
1:C:1:MSE:CE	1:C:77:LYS:HE3	2.24	0.48
1:D:241:ILE:HB	1:D:282:MSE:CE	2.44	0.48
1:A:226:GLN:O	1:A:238:ARG:NH2	2.45	0.48
1:B:161:ILE:N	1:B:161:ILE:HD12	2.29	0.48
1:C:205:LYS:NZ	3:C:2112:HOH:O	2.46	0.48
1:B:95:HIS:HE1	1:B:100:THR:OG1	1.97	0.47
1:B:95:HIS:HD2	1:B:96:GLU:OE2	1.97	0.47
1:C:168:THR:HG22	3:C:2097:HOH:O	2.13	0.47
1:D:182:ILE:HG12	1:D:216:ILE:HG21	1.97	0.47
1:A:48:GLN:HE22	1:A:293:VAL:H	1.61	0.47
1:D:59:ILE:HG12	1:D:80:PHE:HB3	1.96	0.47
1:A:282:MSE:CE	1:A:305:ILE:HD11	2.44	0.47
1:D:127:LYS:O	1:D:127:LYS:CA	2.63	0.47
1:C:232:HIS:CD2	1:C:270:ASP:OD2	2.55	0.46
1:B:31:VAL:HG21	1:C:104:GLU:HG2	1.97	0.46
1:A:23:ASP:HB2	1:D:98:GLN:HE21	1.80	0.46
1:D:248:ASN:OD1	1:D:250:VAL:HG13	2.16	0.46
1:C:244:ILE:CG2	1:C:282:MSE:HE2	2.46	0.46

*Continued on next page...*

*Continued from previous page...*

Atom-1	Atom-2	Interatomic distance (Å)	Clash overlap (Å)
1:D:188:GLU:O	1:D:192:LEU:HD13	2.15	0.46
1:A:282:MSE:HE2	1:A:305:ILE:HD11	1.97	0.45
1:C:241:ILE:HD12	1:C:282:MSE:HE3	1.98	0.45
1:A:244:ILE:HG21	1:A:301:LEU:HD21	1.98	0.45
1:C:226:GLN:H	1:C:226:GLN:HE21	1.64	0.45
1:A:6:THR:HG23	3:A:2108:HOH:O	2.16	0.45
1:D:126:GLU:OE1	1:D:156:LYS:NZ	2.50	0.45
1:C:260:ILE:O	1:C:264:ILE:HG12	2.17	0.44
1:D:161:ILE:HD12	1:D:161:ILE:N	2.32	0.44
1:C:244:ILE:HG23	1:C:282:MSE:HE2	1.98	0.44
1:B:289:GLN:O	3:B:2136:HOH:O	2.21	0.44
1:A:15:TYR:OH	1:D:91:ILE:HD13	2.17	0.44
2:B:1311:ADP:C3'	3:B:2114:HOH:O	2.66	0.44
1:B:17:LEU:HD21	1:B:28:VAL:CG2	2.48	0.44
1:D:173:LEU:O	1:D:178:LYS:NZ	2.51	0.43
1:C:165:SER:HB2	1:C:188:GLU:OE2	2.18	0.43
1:C:3:LEU:HB2	1:C:128:VAL:HG11	2.00	0.43
1:A:-3:ARG:NH1	1:A:-3:ARG:CG	2.81	0.43
1:D:273:LEU:C	1:D:273:LEU:HD23	2.38	0.43
1:D:279:THR:HG21	1:D:298:TYR:CD1	2.54	0.43
1:D:310:VAL:HG23	3:D:2119:HOH:O	2.18	0.43
1:B:124:LEU:O	1:B:127:LYS:HG2	2.18	0.43
1:A:49:VAL:HG23	1:A:51:GLU:HG2	2.01	0.43
1:A:3:LEU:HB2	1:A:128:VAL:HG11	2.00	0.43
1:B:44:ARG:HD2	3:B:2138:HOH:O	2.18	0.43
1:A:1:MSE:HE1	3:A:2047:HOH:O	2.19	0.42
1:A:208:VAL:HG11	1:A:231:LYS:HB2	2.01	0.42
1:D:20:LEU:CD1	1:D:22:LEU:CD2	2.97	0.42
1:B:244:ILE:HG21	1:B:282:MSE:CE	2.33	0.42
1:C:1:MSE:HE2	1:C:53:VAL:C	2.39	0.42
1:D:20:LEU:CD1	1:D:22:LEU:HD23	2.49	0.42
1:C:161:ILE:N	1:C:161:ILE:HD12	2.34	0.42
1:B:138:PRO:HD2	1:B:141:LEU:HD12	2.01	0.42
1:D:161:ILE:HD13	1:D:261:THR:HG23	2.02	0.42
1:B:84:LYS:HE2	3:B:2069:HOH:O	2.20	0.42
1:C:115:ALA:O	1:C:119:LYS:HE2	2.19	0.42
1:C:217:GLU:OE1	1:C:232:HIS:HE1	2.03	0.42
1:B:181:VAL:HG22	1:B:218:TRP:HB2	2.01	0.42
1:D:213:PHE:HB3	1:D:219:ILE:HD11	2.01	0.42
1:B:63:LEU:HD13	3:B:2030:HOH:O	2.19	0.41
1:C:17:LEU:HD21	1:C:28:VAL:CG1	2.50	0.41

*Continued on next page...*

Continued from previous page...

Atom-1	Atom-2	Interatomic distance (Å)	Clash overlap (Å)
1:A:108:GLU:OE1	1:A:139:LYS:HE2	2.21	0.41
1:A:108:GLU:HG3	1:A:140:GLY:HA3	2.03	0.41
1:A:161:ILE:N	1:A:161:ILE:HD12	2.35	0.41
1:D:260:ILE:O	1:D:264:ILE:HG12	2.21	0.41
1:A:226:GLN:HB3	1:A:238:ARG:NH2	2.31	0.41
1:C:228:ALA:H	1:C:239:VAL:HG13	1.85	0.41
1:A:213:PHE:HB3	1:A:219:ILE:HD11	2.02	0.41
1:D:175:ASN:HD21	1:D:177:TYR:HB2	1.85	0.41
1:B:66:PHE:CE1	1:C:86:GLU:OE2	2.74	0.41
1:D:0:HIS:CA	3:D:2003:HOH:O	2.66	0.41
1:A:22:LEU:HB3	1:D:98:GLN:NE2	2.36	0.40
1:A:119:LYS:HB3	1:A:119:LYS:HE2	1.91	0.40
1:D:98:GLN:NE2	3:D:2073:HOH:O	2.53	0.40

There are no symmetry-related clashes.

## 5.3 Torsion angles [i](#)

### 5.3.1 Protein backbone [i](#)

In the following table, the Percentiles column shows the percent Ramachandran outliers of the chain as a percentile score with respect to all X-ray entries followed by that with respect to entries of similar resolution.

The Analysed column shows the number of residues for which the backbone conformation was analysed, and the total number of residues.

Mol	Chain	Analysed	Favoured	Allowed	Outliers	Percentiles	
1	A	312/330 (94%)	305 (98%)	7 (2%)	0	100	100
1	B	312/330 (94%)	308 (99%)	4 (1%)	0	100	100
1	C	309/330 (94%)	305 (99%)	4 (1%)	0	100	100
1	D	306/330 (93%)	301 (98%)	5 (2%)	0	100	100
All	All	1239/1320 (94%)	1219 (98%)	20 (2%)	0	100	100

There are no Ramachandran outliers to report.

### 5.3.2 Protein sidechains ⓘ

In the following table, the Percentiles column shows the percent sidechain outliers of the chain as a percentile score with respect to all X-ray entries followed by that with respect to entries of similar resolution.

The Analysed column shows the number of residues for which the sidechain conformation was analysed, and the total number of residues.

Mol	Chain	Analysed	Rotameric	Outliers	Percentiles	
1	A	266/277 (96%)	258 (97%)	8 (3%)	41	41
1	B	266/277 (96%)	255 (96%)	11 (4%)	30	28
1	C	264/277 (95%)	251 (95%)	13 (5%)	25	21
1	D	262/277 (95%)	244 (93%)	18 (7%)	15	11
All	All	1058/1108 (96%)	1008 (95%)	50 (5%)	26	22

All (50) residues with a non-rotameric sidechain are listed below:

Mol	Chain	Res	Type
1	A	-3	ARG
1	A	175	ASN
1	A	194	ASN
1	A	204	LEU
1	A	208	VAL
1	A	226	GLN
1	A	290	THR
1	A	293	VAL
1	B	-3	ARG
1	B	22	LEU
1	B	38	LYS
1	B	103	LEU
1	B	154	GLN
1	B	156	LYS
1	B	175	ASN
1	B	183	LYS
1	B	204	LEU
1	B	223	LEU
1	B	246	VAL
1	C	31	VAL
1	C	49	VAL
1	C	75	ASP
1	C	103	LEU
1	C	168	THR

*Continued on next page...*

*Continued from previous page...*

Mol	Chain	Res	Type
1	C	175	ASN
1	C	206	GLN
1	C	210	GLN
1	C	226	GLN
1	C	246	VAL
1	C	280	LEU
1	C	290	THR
1	C	301	LEU
1	D	3	LEU
1	D	5	LEU
1	D	31	VAL
1	D	69	LYS
1	D	82	ASN
1	D	125	LEU
1	D	143	GLN
1	D	152	ARG
1	D	156	LYS
1	D	175	ASN
1	D	183	LYS
1	D	193	LEU
1	D	195	GLN
1	D	197	LEU
1	D	222	SER
1	D	250	VAL
1	D	290	THR
1	D	299	ASP

Some sidechains can be flipped to improve hydrogen bonding and reduce clashes. All (34) such sidechains are listed below:

Mol	Chain	Res	Type
1	A	48	GLN
1	A	95	HIS
1	A	194	ASN
1	A	195	GLN
1	A	210	GLN
1	A	226	GLN
1	A	303	ASN
1	B	41	ASN
1	B	48	GLN
1	B	95	HIS
1	B	154	GLN
1	B	210	GLN

*Continued on next page...*

*Continued from previous page...*

Mol	Chain	Res	Type
1	B	267	HIS
1	B	297	ASN
1	B	303	ASN
1	C	26	ASN
1	C	48	GLN
1	C	120	HIS
1	C	170	GLN
1	C	210	GLN
1	C	226	GLN
1	C	232	HIS
1	C	296	ASN
1	D	73	HIS
1	D	98	GLN
1	D	111	ASN
1	D	142	ASN
1	D	175	ASN
1	D	191	GLN
1	D	233	ASN
1	D	240	ASN
1	D	284	ASN
1	D	286	GLN
1	D	303	ASN

### 5.3.3 RNA [i](#)

There are no RNA molecules in this entry.

## 5.4 Non-standard residues in protein, DNA, RNA chains [i](#)

There are no non-standard protein/DNA/RNA residues in this entry.

## 5.5 Carbohydrates [i](#)

There are no carbohydrates in this entry.

## 5.6 Ligand geometry [i](#)

2 ligands are modelled in this entry.

In the following table, the Counts columns list the number of bonds (or angles) for which Mogul statistics could be retrieved, the number of bonds (or angles) that are observed in the model and



the number of bonds (or angles) that are defined in the Chemical Component Dictionary. The Link column lists molecule types, if any, to which the group is linked. The Z score for a bond length (or angle) is the number of standard deviations the observed value is removed from the expected value. A bond length (or angle) with  $|Z| > 2$  is considered an outlier worth inspection. RMSZ is the root-mean-square of all Z scores of the bond lengths (or angles).

Mol	Type	Chain	Res	Link	Bond lengths			Bond angles		
					Counts	RMSZ	# Z  > 2	Counts	RMSZ	# Z  > 2
2	ADP	B	1311	-	24,29,29	1.00	1 (4%)	29,45,45	1.12	2 (6%)
2	ADP	D	1311	-	24,29,29	1.02	2 (8%)	29,45,45	1.31	3 (10%)

In the following table, the Chirals column lists the number of chiral outliers, the number of chiral centers analysed, the number of these observed in the model and the number defined in the Chemical Component Dictionary. Similar counts are reported in the Torsion and Rings columns. '-' means no outliers of that kind were identified.

Mol	Type	Chain	Res	Link	Chirals	Torsions	Rings
2	ADP	B	1311	-	-	5/12/32/32	0/3/3/3
2	ADP	D	1311	-	-	0/12/32/32	0/3/3/3

All (3) bond length outliers are listed below:

Mol	Chain	Res	Type	Atoms	Z	Observed(Å)	Ideal(Å)
2	D	1311	ADP	C5-C4	2.62	1.47	1.40
2	B	1311	ADP	C5-C4	2.60	1.47	1.40
2	D	1311	ADP	O4'-C1'	2.05	1.43	1.41

All (5) bond angle outliers are listed below:

Mol	Chain	Res	Type	Atoms	Z	Observed(°)	Ideal(°)
2	D	1311	ADP	N3-C2-N1	-3.55	123.12	128.68
2	B	1311	ADP	N3-C2-N1	-3.41	123.35	128.68
2	D	1311	ADP	PA-O3A-PB	-2.97	122.62	132.83
2	D	1311	ADP	C4-C5-N7	-2.48	106.82	109.40
2	B	1311	ADP	C4-C5-N7	-2.18	107.13	109.40

There are no chirality outliers.

All (5) torsion outliers are listed below:

Mol	Chain	Res	Type	Atoms
2	B	1311	ADP	C5'-O5'-PA-O1A
2	B	1311	ADP	O4'-C4'-C5'-O5'
2	B	1311	ADP	C3'-C4'-C5'-O5'

*Continued on next page...*

*Continued from previous page...*

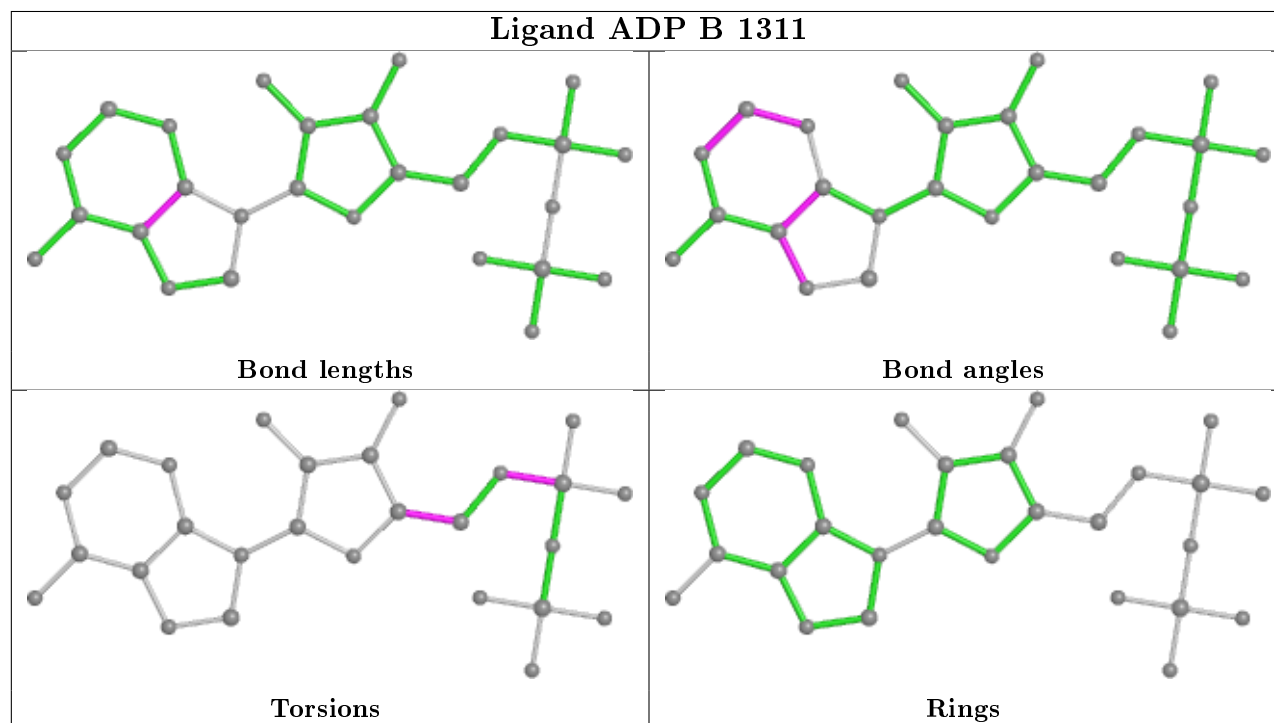
Mol	Chain	Res	Type	Atoms
2	B	1311	ADP	C5'-O5'-PA-O3A
2	B	1311	ADP	C5'-O5'-PA-O2A

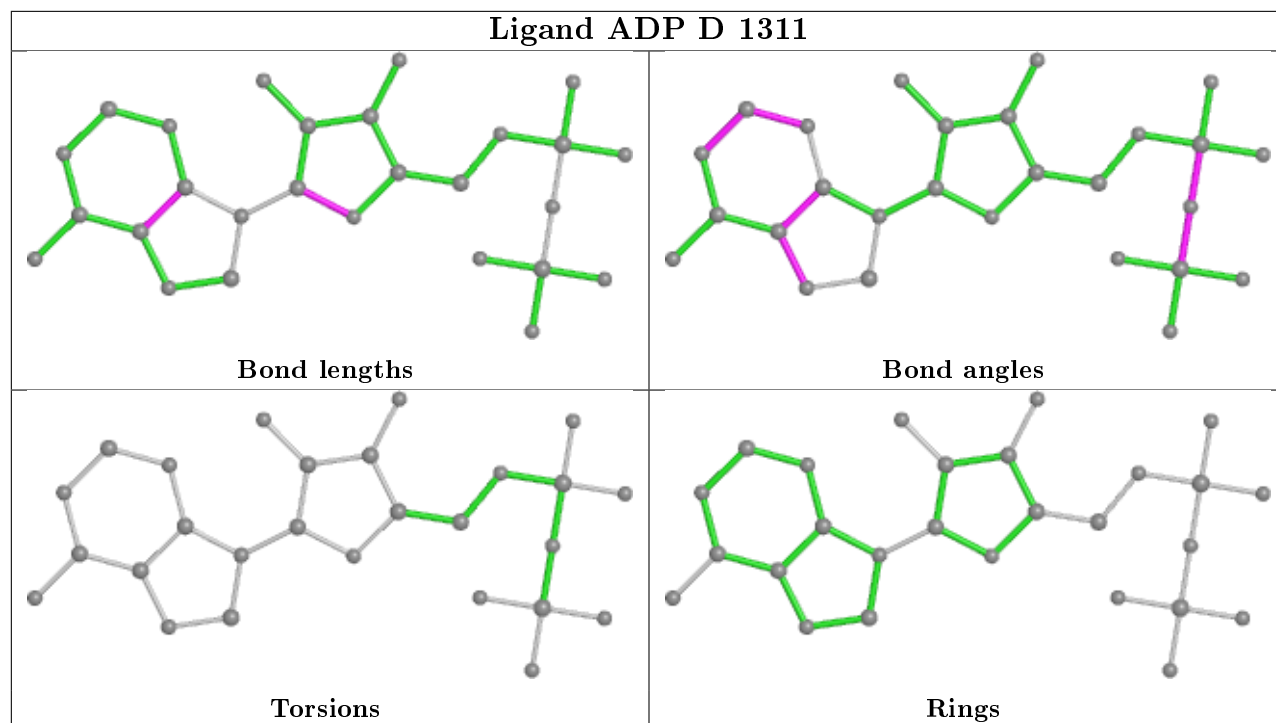
There are no ring outliers.

2 monomers are involved in 2 short contacts:

Mol	Chain	Res	Type	Clashes	Symm-Clashes
2	B	1311	ADP	1	0
2	D	1311	ADP	1	0

The following is a two-dimensional graphical depiction of Mogul quality analysis of bond lengths, bond angles, torsion angles, and ring geometry for all instances of the Ligand of Interest. In addition, ligands with molecular weight > 250 and outliers as shown on the validation Tables will also be included. For torsion angles, if less than 5% of the Mogul distribution of torsion angles is within 10 degrees of the torsion angle in question, then that torsion angle is considered an outlier. Any bond that is central to one or more torsion angles identified as an outlier by Mogul will be highlighted in the graph. For rings, the root-mean-square deviation (RMSD) between the ring in question and similar rings identified by Mogul is calculated over all ring torsion angles. If the average RMSD is greater than 60 degrees and the minimal RMSD between the ring in question and any Mogul-identified rings is also greater than 60 degrees, then that ring is considered an outlier. The outliers are highlighted in purple. The color gray indicates Mogul did not find sufficient equivalents in the CSD to analyse the geometry.





## 5.7 Other polymers [i](#)

There are no such residues in this entry.

## 5.8 Polymer linkage issues [i](#)

There are no chain breaks in this entry.

## 6 Fit of model and data

### 6.1 Protein, DNA and RNA chains

In the following table, the column labelled ‘#RSRZ> 2’ contains the number (and percentage) of RSRZ outliers, followed by percent RSRZ outliers for the chain as percentile scores relative to all X-ray entries and entries of similar resolution. The OWAB column contains the minimum, median, 95<sup>th</sup> percentile and maximum values of the occupancy-weighted average B-factor per residue. The column labelled ‘Q< 0.9’ lists the number of (and percentage) of residues with an average occupancy less than 0.9.

Mol	Chain	Analysed	<RSRZ>	#RSRZ>2	OWAB(Å <sup>2</sup> )	Q<0.9
1	A	313/330 (94%)	0.02	6 (1%) 66 65	14, 25, 51, 59	2 (0%)
1	B	312/330 (94%)	-0.01	6 (1%) 66 65	14, 27, 43, 62	2 (0%)
1	C	309/330 (93%)	0.05	5 (1%) 72 70	16, 29, 49, 65	1 (0%)
1	D	309/330 (93%)	0.38	22 (7%) 16 15	16, 35, 66, 87	5 (1%)
All	All	1243/1320 (94%)	0.11	39 (3%) 49 48	14, 29, 54, 87	10 (0%)

All (39) RSRZ outliers are listed below:

Mol	Chain	Res	Type	RSRZ
1	D	197	LEU	6.6
1	D	196	PRO	5.0
1	D	194	ASN	4.9
1	D	308	LEU	3.6
1	D	211	PRO	3.4
1	D	292	TYR	2.9
1	B	197	LEU	2.9
1	B	196	PRO	2.9
1	C	247	LEU	2.8
1	D	191	GLN	2.8
1	B	300	ASP	2.7
1	D	225	ALA	2.7
1	D	30	GLU	2.7
1	D	170	GLN	2.6
1	A	245	SER	2.6
1	D	126	GLU	2.5
1	D	247	LEU	2.5
1	A	247	LEU	2.4
1	D	224	GLY	2.4
1	D	295	LEU	2.4
1	D	310	VAL	2.4

*Continued on next page...*

*Continued from previous page...*

Mol	Chain	Res	Type	RSRZ
1	C	199	GLU	2.4
1	D	155	ASN	2.3
1	D	75	ASP	2.3
1	C	234	HIS	2.3
1	A	244	ILE	2.3
1	B	244	ILE	2.3
1	D	195	GLN	2.3
1	D	190	TYR	2.2
1	D	193	LEU	2.2
1	A	194	ASN	2.2
1	B	194	ASN	2.2
1	A	241	ILE	2.2
1	A	288	ALA	2.1
1	D	296	ASN	2.1
1	D	252	SER	2.1
1	C	194	ASN	2.1
1	C	308	LEU	2.0
1	B	257	VAL	2.0

## 6.2 Non-standard residues in protein, DNA, RNA chains [i](#)

There are no non-standard protein/DNA/RNA residues in this entry.

## 6.3 Carbohydrates [i](#)

There are no carbohydrates in this entry.

## 6.4 Ligands [i](#)

In the following table, the Atoms column lists the number of modelled atoms in the group and the number defined in the chemical component dictionary. The B-factors column lists the minimum, median, 95<sup>th</sup> percentile and maximum values of B factors of atoms in the group. The column labelled 'Q< 0.9' lists the number of atoms with occupancy less than 0.9.

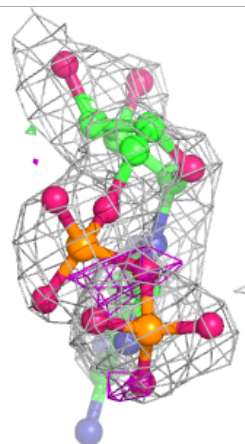
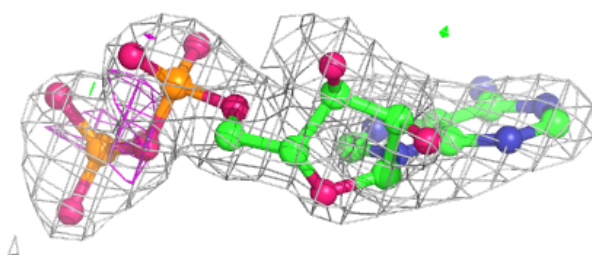
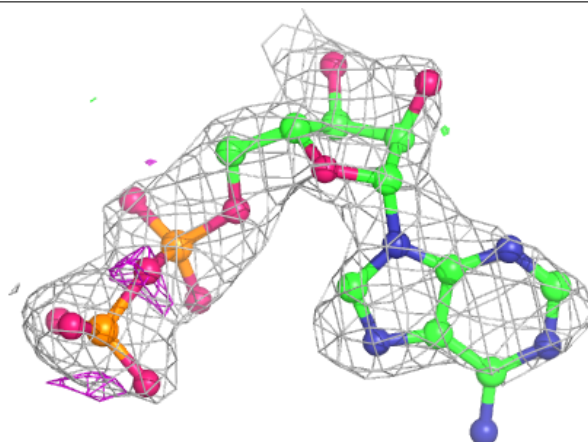
Mol	Type	Chain	Res	Atoms	RSCC	RSR	B-factors( $\text{\AA}^2$ )	Q<0.9
2	ADP	D	1311	27/27	0.87	0.21	60,63,65,65	0
2	ADP	B	1311	27/27	0.89	0.19	46,47,48,49	0

The following is a graphical depiction of the model fit to experimental electron density of all instances of the Ligand of Interest. In addition, ligands with molecular weight > 250 and outliers

as shown on the geometry validation Tables will also be included. Each fit is shown from different orientation to approximate a three-dimensional view.

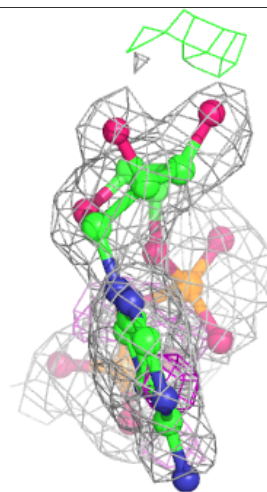
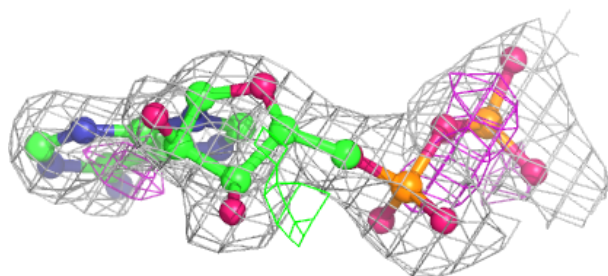
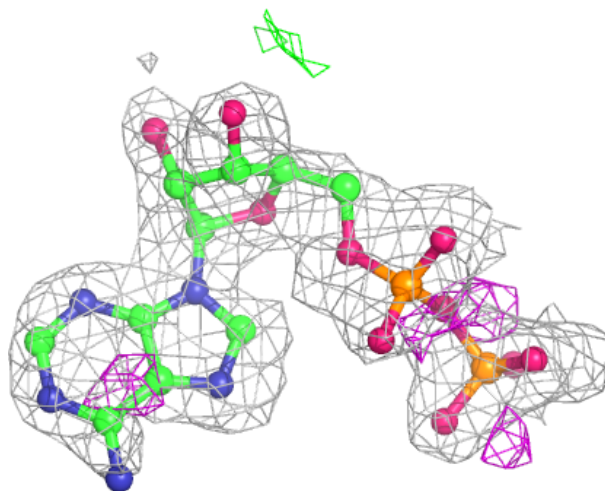
**Electron density around ADP D 1311:**

$2mF_o-DF_c$  (at 0.7 rmsd) in gray  
 $mF_o-DF_c$  (at 3 rmsd) in purple (negative)  
and green (positive)



**Electron density around ADP B 1311:**

$2mF_o-DF_c$  (at 0.7 rmsd) in gray  
 $mF_o-DF_c$  (at 3 rmsd) in purple (negative)  
and green (positive)



## 6.5 Other polymers [i](#)

There are no such residues in this entry.