



# Full wwPDB X-ray Structure Validation Report ⓘ

May 17, 2020 – 10:59 pm BST

PDB ID : 4JGZ  
Title : Crystal structure of human coxsackievirus A16 uncoating intermediate (space group I222)  
Authors : Ren, J.; Wang, X.; Hu, Z.; Gao, Q.; Sun, Y.; Li, X.; Porta, C.; Walter, T.S.; Gilbert, R.J.; Zhao, Y.; Axford, D.; Williams, M.; McAuley, K.; Rowlands, D.J.; Yin, W.; Wang, J.; Stuart, D.I.; Rao, Z.; Fry, E.E.  
Deposited on : 2013-03-04  
Resolution : 3.00 Å(reported)

This is a Full wwPDB X-ray Structure Validation Report for a publicly released PDB entry.

We welcome your comments at [validation@mail.wwpdb.org](mailto:validation@mail.wwpdb.org)

A user guide is available at

<https://www.wwpdb.org/validation/2017/XrayValidationReportHelp>

with specific help available everywhere you see the ⓘ symbol.

---

The following versions of software and data (see [references ⓘ](#)) were used in the production of this report:

MolProbity	:	4.02b-467
Xtriage (Phenix)	:	1.13
EDS	:	2.11
Percentile statistics	:	20191225.v01 (using entries in the PDB archive December 25th 2019)
Refmac	:	5.8.0158
CCP4	:	7.0.044 (Gargrove)
Ideal geometry (proteins)	:	Engh & Huber (2001)
Ideal geometry (DNA, RNA)	:	Parkinson et al. (1996)
Validation Pipeline (wwPDB-VP)	:	2.11

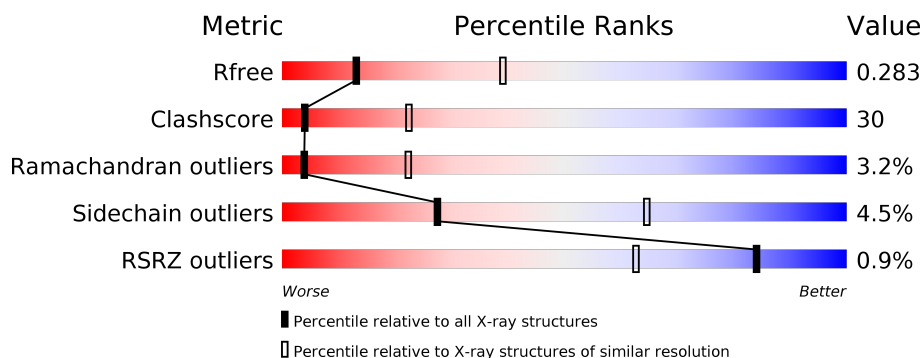
# 1 Overall quality at a glance

The following experimental techniques were used to determine the structure:

## *X-RAY DIFFRACTION*

The reported resolution of this entry is 3.00 Å.

Percentile scores (ranging between 0-100) for global validation metrics of the entry are shown in the following graphic. The table shows the number of entries on which the scores are based.



Metric	Whole archive (#Entries)	Similar resolution (#Entries, resolution range(Å))
$R_{free}$	130704	2092 (3.00-3.00)
Clashscore	141614	2416 (3.00-3.00)
Ramachandran outliers	138981	2333 (3.00-3.00)
Sidechain outliers	138945	2336 (3.00-3.00)
RSRZ outliers	127900	1990 (3.00-3.00)

The table below summarises the geometric issues observed across the polymeric chains and their fit to the electron density. The red, orange, yellow and green segments on the lower bar indicate the fraction of residues that contain outliers for  $\geq 3$ , 2, 1 and 0 types of geometric quality criteria respectively. A grey segment represents the fraction of residues that are not modelled. The numeric value for each fraction is indicated below the corresponding segment, with a dot representing fractions  $\leq 5\%$ . The upper red bar (where present) indicates the fraction of residues that have poor fit to the electron density. The numeric value is given above the bar.

Mol	Chain	Length	Quality of chain
1	A	297	<div> <div> <div></div> <div>35%</div> <div>39%</div> <div>23%</div> </div> <div> <div></div> <div>35%</div> <div>39%</div> <div>23%</div> </div> </div>
2	B	254	<div> <div>2%</div> <div>46%</div> <div>45%</div> <div>6%</div> </div> <div> <div>2%</div> <div>46%</div> <div>45%</div> <div>6%</div> </div>

## 2 Entry composition

There are 3 unique types of molecules in this entry. The entry contains 5468 atoms, of which 0 are hydrogens and 0 are deuteriums.

In the tables below, the ZeroOcc column contains the number of atoms modelled with zero occupancy, the AltConf column contains the number of residues with at least one atom in alternate conformation and the Trace column contains the number of residues modelled with at most 2 atoms.

- Molecule 1 is a protein called Polyprotein, capsid protein VP1.

Mol	Chain	Residues	Atoms					ZeroOcc	AltConf	Trace
1	A	228	Total	C	N	O	S	0	0	0
			1830	1170	312	335	13			

- Molecule 2 is a protein called Polyprotein, capsid protein VP2.

Mol	Chain	Residues	Atoms					ZeroOcc	AltConf	Trace
2	B	239	Total	C	N	O	S	0	0	0
			1844	1186	305	343	10			

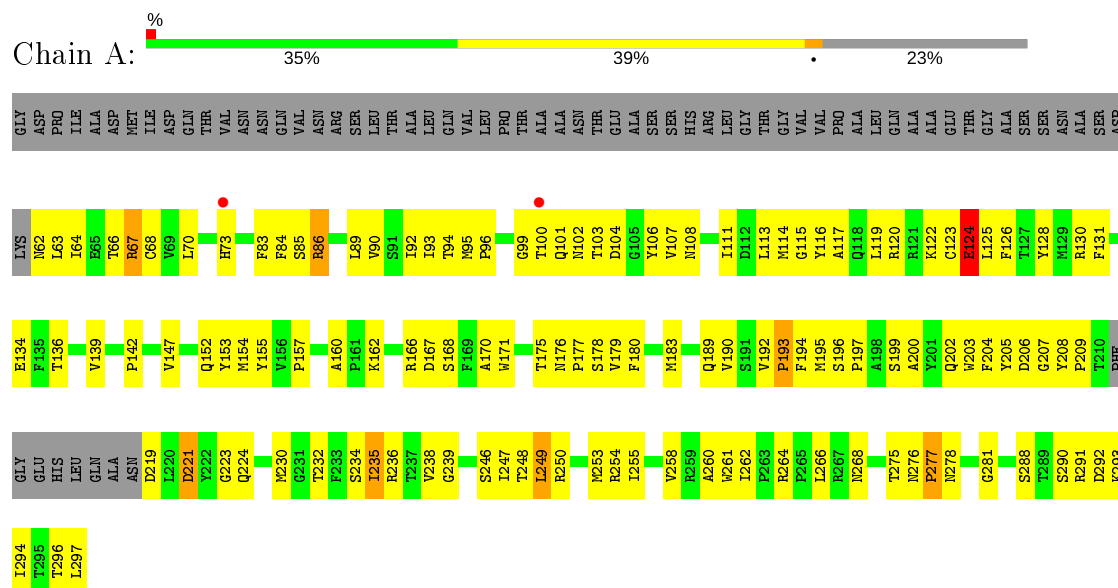
- Molecule 3 is a protein called Polyprotein, capsid protein VP3.

Mol	Chain	Residues	Atoms					ZeroOcc	AltConf	Trace
3	C	231	Total	C	N	O	S	0	0	0
			1794	1156	291	336	11			

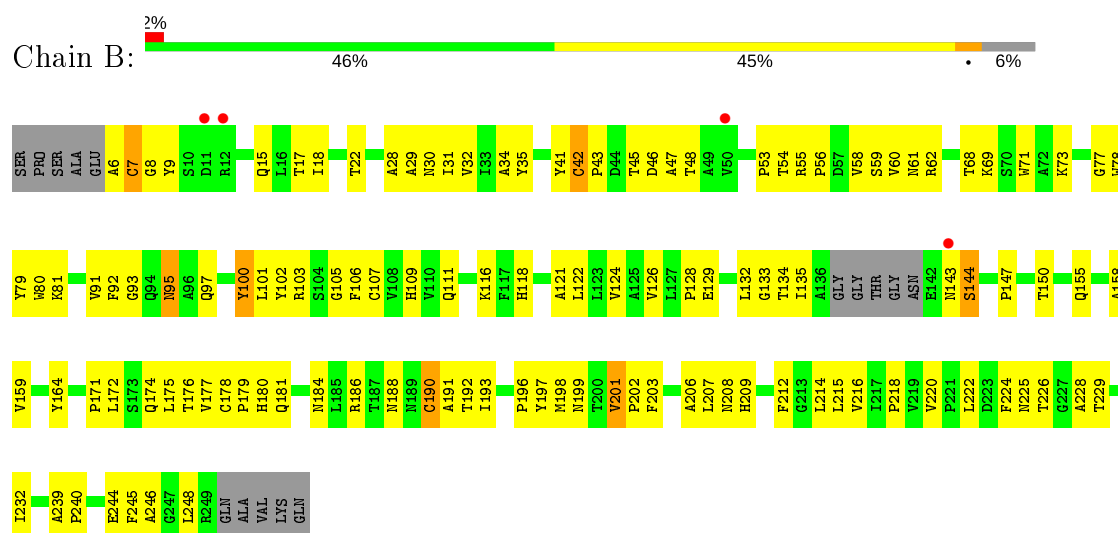
### 3 Residue-property plots

These plots are drawn for all protein, RNA and DNA chains in the entry. The first graphic for a chain summarises the proportions of the various outlier classes displayed in the second graphic. The second graphic shows the sequence view annotated by issues in geometry and electron density. Residues are color-coded according to the number of geometric quality criteria for which they contain at least one outlier: green = 0, yellow = 1, orange = 2 and red = 3 or more. A red dot above a residue indicates a poor fit to the electron density ( $RSRZ > 2$ ). Stretches of 2 or more consecutive residues without any outlier are shown as a green connector. Residues present in the sample, but not in the model, are shown in grey.

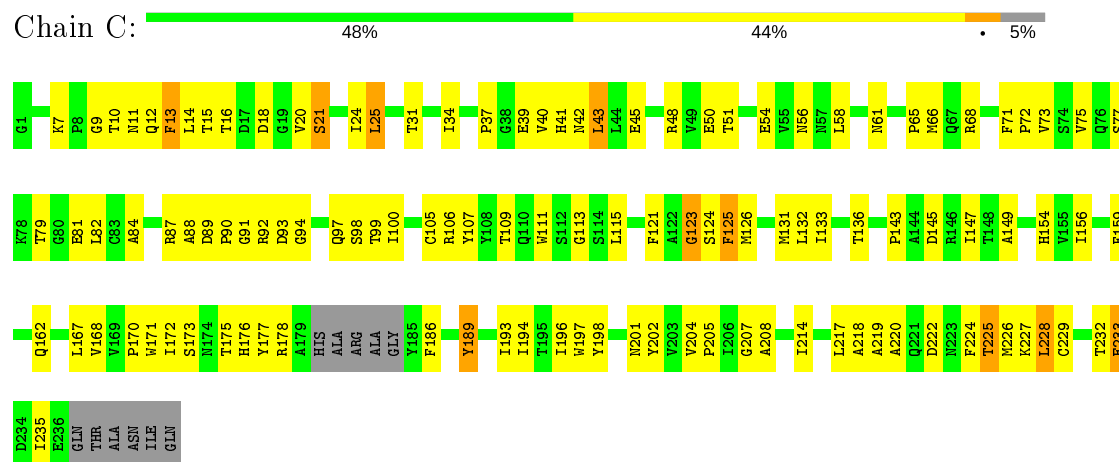
#### • Molecule 1: Polyprotein, capsid protein VP1



#### • Molecule 2: Polyprotein, capsid protein VP2



#### • Molecule 3: Polyprotein, capsid protein VP3



## 4 Data and refinement statistics

Property	Value	Source
Space group	I 2 2 2	Depositor
Cell constants a, b, c, $\alpha$ , $\beta$ , $\gamma$	338.40Å 360.20Å 366.00Å 90.00° 90.00° 90.00°	Depositor
Resolution (Å)	49.46 – 3.00 49.46 – 3.00	Depositor EDS
% Data completeness (in resolution range)	24.5 (49.46-3.00) 24.5 (49.46-3.00)	Depositor EDS
$R_{merge}$	0.46	Depositor
$R_{sym}$	(Not available)	Depositor
$\langle I/\sigma(I) \rangle$ <sup>1</sup>	1.16 (at 3.01Å)	Xtriage
Refinement program	CNS	Depositor
R, $R_{free}$	0.286 , 0.311 0.288 , 0.283	Depositor DCC
$R_{free}$ test set	5344 reflections (4.95%)	wwPDB-VP
Wilson B-factor (Å <sup>2</sup> )	45.6	Xtriage
Anisotropy	0.069	Xtriage
Bulk solvent $k_{sol}$ (e/Å <sup>3</sup> ), $B_{sol}$ (Å <sup>2</sup> )	0.30 , 26.1	EDS
L-test for twinning <sup>2</sup>	$\langle  L  \rangle = 0.33$ , $\langle L^2 \rangle = 0.16$	Xtriage
Estimated twinning fraction	0.147 for -h,-l,-k	Xtriage
$F_o, F_c$ correlation	0.75	EDS
Total number of atoms	5468	wwPDB-VP
Average B, all atoms (Å <sup>2</sup> )	58.0	wwPDB-VP

Xtriage's analysis on translational NCS is as follows: *The largest off-origin peak in the Patterson function is 2.81% of the height of the origin peak. No significant pseudotranslation is detected.*

<sup>1</sup>Intensities estimated from amplitudes.

<sup>2</sup>Theoretical values of  $\langle |L| \rangle$ ,  $\langle L^2 \rangle$  for acentric reflections are 0.5, 0.333 respectively for untwinned datasets, and 0.375, 0.2 for perfectly twinned datasets.

## 5 Model quality

### 5.1 Standard geometry

The Z score for a bond length (or angle) is the number of standard deviations the observed value is removed from the expected value. A bond length (or angle) with  $|Z| > 5$  is considered an outlier worth inspection. RMSZ is the root-mean-square of all Z scores of the bond lengths (or angles).

Mol	Chain	Bond lengths		Bond angles	
		RMSZ	# Z  >5	RMSZ	# Z  >5
1	A	0.39	0/1883	0.64	0/2564
2	B	0.38	0/1898	0.65	0/2608
3	C	0.40	0/1845	0.67	0/2528
All	All	0.39	0/5626	0.65	0/7700

There are no bond length outliers.

There are no bond angle outliers.

There are no chirality outliers.

There are no planarity outliers.

### 5.2 Too-close contacts

In the following table, the Non-H and H(model) columns list the number of non-hydrogen atoms and hydrogen atoms in the chain respectively. The H(added) column lists the number of hydrogen atoms added and optimized by MolProbity. The Clashes column lists the number of clashes within the asymmetric unit, whereas Symm-Clashes lists symmetry related clashes.

Mol	Chain	Non-H	H(model)	H(added)	Clashes	Symm-Clashes
1	A	1830	0	1792	127	0
2	B	1844	0	1786	127	0
3	C	1794	0	1759	121	0
All	All	5468	0	5337	326	0

The all-atom clashscore is defined as the number of clashes found per 1000 atoms (including hydrogen atoms). The all-atom clashscore for this structure is 30.

All (326) close contacts within the same asymmetric unit are listed below, sorted by their clash magnitude.

Atom-1	Atom-2	Interatomic distance (Å)	Clash overlap (Å)
2:B:181:GLN:HG2	2:B:191:ALA:HB1	1.38	1.02

*Continued on next page...*

*Continued from previous page...*

Atom-1	Atom-2	Interatomic distance (Å)	Clash overlap (Å)
1:A:189:GLN:HG2	3:C:21:SER:HB3	1.45	0.98
2:B:134:THR:HG22	2:B:135:ILE:H	1.32	0.93
1:A:139:VAL:HG12	1:A:249:LEU:HB2	1.49	0.91
3:C:65:PRO:O	3:C:68:ARG:HG3	1.75	0.87
3:C:115:LEU:HD11	3:C:172:ILE:HD13	1.57	0.86
2:B:17:THR:HG22	2:B:22:THR:OG1	1.75	0.86
2:B:111:GLN:HG3	2:B:190:CYS:HB2	1.56	0.86
2:B:199:ASN:ND2	2:B:201:VAL:HG13	1.90	0.85
2:B:6:ALA:HA	2:B:30:ASN:HB3	1.57	0.85
1:A:73:HIS:HD2	3:C:227:LYS:HE3	1.43	0.81
2:B:181:GLN:HG2	2:B:191:ALA:CB	2.09	0.81
2:B:101:LEU:HB2	2:B:246:ALA:HB3	1.63	0.79
3:C:145:ASP:OD1	3:C:147:ILE:HG22	1.83	0.78
2:B:48:THR:HB	2:B:53:PRO:HD3	1.65	0.78
2:B:101:LEU:HB3	2:B:203:PHE:HB3	1.66	0.78
1:A:235:ILE:H	1:A:235:ILE:HD12	1.49	0.77
1:A:155:TYR:O	1:A:157:PRO:HD3	1.85	0.76
2:B:54:THR:HG22	2:B:56:PRO:HD3	1.70	0.73
3:C:10:THR:HG22	3:C:11:ASN:ND2	2.03	0.73
3:C:97:GLN:HE21	3:C:106:ARG:NH1	1.86	0.72
1:A:100:THR:HG22	1:A:101:GLN:HG3	1.70	0.72
1:A:194:PHE:CZ	1:A:200:ALA:HA	2.24	0.72
1:A:205:TYR:O	1:A:223:GLY:HA2	1.90	0.71
3:C:204:VAL:HG23	3:C:208:ALA:HB3	1.72	0.71
3:C:143:PRO:HB3	3:C:149:ALA:HB2	1.71	0.71
3:C:109:THR:OG1	3:C:228:LEU:HD12	1.90	0.71
1:A:193:PRO:HG2	1:A:195:MET:SD	2.31	0.70
1:A:139:VAL:HG12	1:A:249:LEU:CB	2.19	0.69
2:B:134:THR:HG22	2:B:135:ILE:N	2.06	0.69
1:A:64:ILE:HD12	1:A:64:ILE:H	1.57	0.69
1:A:125:LEU:HD13	1:A:266:LEU:HD21	1.73	0.69
1:A:94:THR:HG22	1:A:96:PRO:HD3	1.74	0.69
1:A:142:PRO:HD3	1:A:246:SER:O	1.93	0.69
2:B:18:ILE:HG22	2:B:62:ARG:HA	1.75	0.69
2:B:91:VAL:O	2:B:95:ASN:HB2	1.92	0.68
2:B:107:CYS:HB3	2:B:239:ALA:HB3	1.75	0.68
3:C:143:PRO:HB2	3:C:197:TRP:HZ2	1.56	0.68
2:B:199:ASN:HD22	2:B:201:VAL:HG13	1.59	0.68
1:A:235:ILE:N	1:A:235:ILE:HD12	2.09	0.68
3:C:204:VAL:CG2	3:C:208:ALA:HB3	2.23	0.68
3:C:105:CYS:HA	3:C:226:MET:HE3	1.75	0.68

*Continued on next page...*



*Continued from previous page...*

Atom-1	Atom-2	Interatomic distance (Å)	Clash overlap (Å)
2:B:6:ALA:HB2	2:B:181:GLN:NE2	2.09	0.68
1:A:89:LEU:HD21	1:A:92:ILE:HD11	1.76	0.67
1:A:199:SER:OG	3:C:34:ILE:HG23	1.95	0.66
2:B:198:MET:HG2	3:C:37:PRO:HG2	1.76	0.66
2:B:42:CYS:HB2	2:B:103:ARG:NE	2.10	0.66
3:C:194:ILE:HD12	3:C:194:ILE:N	2.11	0.66
1:A:113:LEU:HD21	1:A:253:MET:SD	2.37	0.65
2:B:55:ARG:HG2	2:B:244:GLU:HG2	1.78	0.65
3:C:42:ASN:O	3:C:45:GLU:HG3	1.97	0.65
1:A:288:SER:HB2	3:C:94:GLY:O	1.97	0.65
2:B:118:HIS:HD2	2:B:224:PHE:HB3	1.62	0.64
3:C:7:LYS:HE2	3:C:7:LYS:HA	1.79	0.64
3:C:105:CYS:HA	3:C:226:MET:CE	2.28	0.64
2:B:121:ALA:HB3	2:B:220:VAL:HB	1.79	0.63
2:B:126:VAL:HG13	2:B:212:PHE:CD2	2.34	0.63
1:A:73:HIS:CD2	3:C:227:LYS:HE3	2.31	0.62
1:A:125:LEU:HD23	1:A:126:PHE:CE2	2.35	0.62
3:C:97:GLN:HE21	3:C:106:ARG:HH11	1.45	0.62
2:B:31:ILE:HG12	2:B:192:THR:HB	1.82	0.62
2:B:60:VAL:HG22	2:B:91:VAL:HG23	1.81	0.62
2:B:73:LYS:HG2	2:B:222:LEU:O	2.00	0.61
1:A:66:THR:HG22	1:A:67:ARG:HG2	1.82	0.61
3:C:113:GLY:HA3	3:C:224:PHE:HA	1.83	0.61
1:A:197:PRO:O	3:C:31:THR:HG21	1.99	0.61
2:B:34:ALA:HB3	2:B:196:PRO:HD2	1.81	0.61
3:C:111:TRP:HZ2	3:C:189:TYR:HE2	1.47	0.61
1:A:102:ASN:C	1:A:104:ASP:H	2.03	0.60
1:A:153:TYR:CD1	1:A:235:ILE:HG23	2.37	0.60
3:C:90:PRO:HD2	3:C:189:TYR:OH	2.02	0.60
2:B:132:LEU:HD12	2:B:132:LEU:N	2.17	0.59
2:B:225:ASN:HD22	3:C:207:GLY:C	2.04	0.59
3:C:79:THR:HG22	3:C:201:ASN:N	2.17	0.59
1:A:152:GLN:HG3	1:A:180:PHE:CE2	2.38	0.59
1:A:63:LEU:HD13	3:C:92:ARG:CZ	2.33	0.59
2:B:184:ASN:OD1	2:B:186:ARG:HB3	2.02	0.59
3:C:193:ILE:HG22	3:C:194:ILE:N	2.18	0.58
1:A:166:ARG:HH21	1:A:166:ARG:HG2	1.68	0.58
1:A:153:TYR:HD1	1:A:235:ILE:HG23	1.68	0.58
2:B:201:VAL:HG23	2:B:202:PRO:HD2	1.83	0.58
2:B:124:VAL:HG22	2:B:216:VAL:HG12	1.85	0.58
2:B:18:ILE:CG2	2:B:62:ARG:HA	2.32	0.58

*Continued on next page...*

*Continued from previous page...*

Atom-1	Atom-2	Interatomic distance (Å)	Clash overlap (Å)
1:A:224:GLN:HE22	1:A:275:THR:HB	1.69	0.58
2:B:181:GLN:CG	2:B:191:ALA:HB1	2.26	0.57
1:A:147:VAL:O	1:A:183:MET:HB3	2.04	0.57
3:C:132:LEU:HG	3:C:156:ILE:HD13	1.86	0.57
2:B:129:GLU:CD	2:B:209:HIS:HE2	2.07	0.57
2:B:225:ASN:ND2	3:C:207:GLY:C	2.58	0.57
1:A:152:GLN:HG3	1:A:180:PHE:CZ	2.40	0.57
1:A:64:ILE:N	1:A:64:ILE:HD12	2.20	0.57
2:B:34:ALA:HB3	2:B:196:PRO:CD	2.35	0.56
3:C:13:PHE:CD2	3:C:13:PHE:C	2.78	0.56
2:B:216:VAL:O	2:B:216:VAL:HG23	2.05	0.56
2:B:8:GLY:HA3	2:B:188:ASN:HA	1.87	0.56
3:C:193:ILE:C	3:C:194:ILE:HD12	2.25	0.56
3:C:50:GLU:HA	3:C:218:ALA:O	2.04	0.56
3:C:220:ALA:HB1	3:C:224:PHE:CB	2.35	0.56
2:B:9:TYR:CZ	2:B:116:LYS:HE2	2.41	0.56
2:B:122:LEU:HD23	2:B:218:PRO:HA	1.88	0.56
2:B:6:ALA:N	2:B:30:ASN:HD22	2.04	0.56
1:A:123:CYS:HB3	1:A:203:TRP:NE1	2.21	0.56
2:B:7:CYS:O	2:B:188:ASN:HB2	2.06	0.56
3:C:204:VAL:HG23	3:C:205:PRO:HD2	1.86	0.55
3:C:39:GLU:HG3	3:C:40:VAL:N	2.21	0.55
3:C:88:ALA:C	3:C:90:PRO:HD3	2.27	0.55
2:B:134:THR:CG2	2:B:135:ILE:H	2.13	0.55
1:A:281:GLY:CA	2:B:135:ILE:HG23	2.37	0.55
1:A:84:PHE:HE1	1:A:122:LYS:HB3	1.72	0.55
1:A:297:LEU:HD12	1:A:297:LEU:OXT	2.06	0.55
2:B:164:TYR:OH	3:C:54:GLU:OE1	2.17	0.55
1:A:95:MET:HA	1:A:102:ASN:HD21	1.70	0.55
2:B:8:GLY:CA	2:B:188:ASN:HA	2.37	0.54
1:A:64:ILE:HD13	3:C:186:PHE:HD2	1.72	0.54
1:A:281:GLY:HA3	2:B:135:ILE:HG23	1.89	0.54
2:B:6:ALA:HA	2:B:30:ASN:HD22	1.71	0.54
1:A:261:TRP:HA	3:C:39:GLU:HA	1.88	0.54
1:A:63:LEU:HD13	3:C:92:ARG:NH2	2.23	0.54
1:A:194:PHE:HZ	1:A:200:ALA:HA	1.66	0.54
1:A:157:PRO:O	1:A:160:ALA:HB3	2.08	0.54
1:A:254:ARG:HH12	3:C:18:ASP:HA	1.73	0.54
1:A:192:VAL:HG22	3:C:24:ILE:HG21	1.90	0.54
3:C:73:VAL:HA	3:C:198:TYR:OH	2.07	0.54
2:B:109:HIS:CE1	2:B:190:CYS:SG	3.01	0.54

*Continued on next page...*

*Continued from previous page...*

Atom-1	Atom-2	Interatomic distance (Å)	Clash overlap (Å)
1:A:266:LEU:O	2:B:171:PRO:HD2	2.08	0.54
1:A:93:ILE:HB	1:A:249:LEU:CD2	2.39	0.53
3:C:61:ASN:HB3	3:C:68:ARG:HG2	1.90	0.53
3:C:75:VAL:HG13	3:C:202:TYR:O	2.08	0.53
1:A:85:SER:O	1:A:86:ARG:HB2	2.08	0.53
1:A:157:PRO:HD2	1:A:176:ASN:OD1	2.08	0.53
1:A:291:ARG:HD2	1:A:293:LYS:O	2.09	0.53
3:C:220:ALA:HB1	3:C:224:PHE:HB3	1.90	0.53
1:A:64:ILE:HD13	3:C:186:PHE:CD2	2.44	0.53
3:C:109:THR:HG23	3:C:176:HIS:HB3	1.90	0.53
3:C:54:GLU:HG3	3:C:98:SER:CB	2.39	0.53
2:B:172:LEU:HD23	3:C:66:MET:HE1	1.90	0.52
1:A:96:PRO:HD2	1:A:102:ASN:ND2	2.23	0.52
2:B:93:GLY:O	2:B:97:GLN:HG3	2.09	0.52
1:A:206:ASP:OD2	1:A:206:ASP:O	2.27	0.52
3:C:89:ASP:HB2	3:C:92:ARG:HB2	1.90	0.52
2:B:6:ALA:CA	2:B:30:ASN:HD22	2.23	0.52
3:C:131:MET:HE3	3:C:196:ILE:HG22	1.91	0.52
3:C:111:TRP:HZ2	3:C:189:TYR:CE2	2.27	0.52
2:B:197:TYR:CE2	2:B:199:ASN:HB2	2.44	0.52
1:A:131:PHE:CD1	1:A:255:ILE:HG23	2.45	0.52
1:A:290:SER:OG	3:C:68:ARG:NH2	2.43	0.52
2:B:208:ASN:N	2:B:208:ASN:HD22	2.06	0.51
3:C:10:THR:O	3:C:11:ASN:HB2	2.10	0.51
3:C:51:THR:HG21	3:C:100:ILE:HB	1.92	0.51
2:B:43:PRO:O	2:B:45:THR:HG23	2.10	0.51
1:A:153:TYR:HB2	1:A:179:VAL:HG12	1.92	0.51
2:B:45:THR:HG21	2:B:202:PRO:HG3	1.92	0.51
3:C:106:ARG:C	3:C:232:THR:HG22	2.30	0.51
3:C:107:TYR:CD1	3:C:232:THR:HG23	2.46	0.51
2:B:164:TYR:HD1	3:C:66:MET:HE3	1.75	0.51
1:A:293:LYS:HB2	1:A:296:THR:HG23	1.92	0.51
1:A:93:ILE:HB	1:A:249:LEU:HD23	1.93	0.51
2:B:9:TYR:CE1	2:B:116:LYS:HE2	2.45	0.51
3:C:87:ARG:HD2	3:C:92:ARG:HH22	1.75	0.51
1:A:102:ASN:C	1:A:104:ASP:N	2.64	0.50
2:B:102:TYR:CB	2:B:206:ALA:HB2	2.41	0.50
3:C:193:ILE:CG2	3:C:194:ILE:N	2.75	0.50
1:A:90:VAL:C	1:A:116:TYR:HE2	2.15	0.50
2:B:174:GLN:O	2:B:177:VAL:HG22	2.11	0.50
2:B:6:ALA:O	2:B:28:ALA:HB1	2.11	0.50

*Continued on next page...*

*Continued from previous page...*

Atom-1	Atom-2	Interatomic distance (Å)	Clash overlap (Å)
3:C:167:LEU:HD12	3:C:168:VAL:H	1.76	0.50
1:A:84:PHE:CE1	1:A:122:LYS:HB3	2.46	0.50
2:B:28:ALA:O	2:B:30:ASN:N	2.41	0.50
1:A:123:CYS:O	1:A:125:LEU:N	2.45	0.50
2:B:102:TYR:HB3	2:B:206:ALA:HB2	1.93	0.50
1:A:162:LYS:HE2	1:A:232:THR:OG1	2.12	0.49
1:A:248:THR:HG23	1:A:248:THR:O	2.11	0.49
1:A:268:ASN:HB3	2:B:171:PRO:HD3	1.93	0.49
3:C:121:PHE:HD1	3:C:214:ILE:CD1	2.24	0.49
3:C:50:GLU:HA	3:C:219:ALA:HB2	1.94	0.49
1:A:194:PHE:CZ	1:A:196:SER:HB3	2.47	0.49
3:C:58:LEU:O	3:C:61:ASN:HB2	2.13	0.49
1:A:113:LEU:C	1:A:115:GLY:H	2.14	0.49
1:A:207:GLY:HA3	2:B:209:HIS:HA	1.95	0.49
1:A:66:THR:HG22	1:A:67:ARG:N	2.28	0.49
2:B:176:THR:C	2:B:178:CYS:H	2.14	0.49
3:C:14:LEU:O	3:C:16:THR:N	2.46	0.49
3:C:177:TYR:HB2	3:C:186:PHE:CZ	2.48	0.49
1:A:128:TYR:HD1	1:A:202:GLN:HB3	1.78	0.48
1:A:276:ASN:HB2	1:A:277:PRO:HD2	1.94	0.48
2:B:122:LEU:HD23	2:B:218:PRO:CA	2.43	0.48
3:C:48:ARG:HE	3:C:222:ASP:HA	1.78	0.48
1:A:130:ARG:NH2	3:C:31:THR:O	2.46	0.48
2:B:42:CYS:HB2	2:B:103:ARG:CD	2.43	0.48
3:C:204:VAL:HG22	3:C:205:PRO:O	2.13	0.48
3:C:56:ASN:ND2	3:C:61:ASN:OD1	2.47	0.48
1:A:209:PRO:HD2	1:A:221:ASP:O	2.13	0.48
3:C:9:GLY:O	3:C:12:GLN:HG2	2.13	0.48
2:B:17:THR:HG22	2:B:22:THR:CG2	2.44	0.48
1:A:166:ARG:HG2	1:A:166:ARG:O	2.14	0.47
3:C:121:PHE:HD1	3:C:214:ILE:HD11	1.79	0.47
1:A:108:ASN:ND2	1:A:162:LYS:HB3	2.30	0.47
1:A:68:CYS:O	1:A:70:LEU:HD12	2.15	0.47
2:B:199:ASN:HD21	2:B:201:VAL:HG13	1.77	0.47
3:C:133:ILE:HD13	3:C:196:ILE:HD12	1.96	0.47
3:C:51:THR:OG1	3:C:99:THR:HB	2.13	0.47
1:A:103:THR:HG22	1:A:103:THR:O	2.15	0.47
1:A:114:MET:SD	1:A:120:ARG:HG3	2.55	0.47
1:A:95:MET:HA	1:A:102:ASN:ND2	2.29	0.47
1:A:130:ARG:O	1:A:131:PHE:HB3	2.15	0.47
3:C:88:ALA:O	3:C:90:PRO:HD3	2.15	0.47

*Continued on next page...*

*Continued from previous page...*

Atom-1	Atom-2	Interatomic distance (Å)	Clash overlap (Å)
3:C:136:THR:OG1	3:C:143:PRO:HD3	2.14	0.47
1:A:107:VAL:HB	1:A:235:ILE:HD13	1.95	0.46
2:B:97:GLN:HG2	2:B:207:LEU:HD21	1.97	0.46
2:B:68:THR:CG2	2:B:69:LYS:N	2.78	0.46
1:A:167:ASP:N	1:A:167:ASP:OD2	2.48	0.46
3:C:20:VAL:HG23	3:C:20:VAL:O	2.16	0.46
1:A:177:PRO:HG3	3:C:25:LEU:CD1	2.46	0.46
1:A:192:VAL:HA	3:C:24:ILE:HG22	1.96	0.46
2:B:121:ALA:CB	2:B:220:VAL:HB	2.45	0.46
2:B:186:ARG:NH2	3:C:124:SER:O	2.48	0.46
2:B:214:LEU:HD12	2:B:215:LEU:N	2.30	0.46
3:C:41:HIS:HB2	3:C:45:GLU:OE1	2.16	0.46
3:C:66:MET:HA	3:C:66:MET:CE	2.46	0.46
1:A:128:TYR:CD1	1:A:202:GLN:HB3	2.50	0.46
2:B:116:LYS:O	3:C:126:MET:HG2	2.15	0.46
2:B:102:TYR:CD1	2:B:103:ARG:N	2.85	0.45
2:B:59:SER:OG	2:B:91:VAL:HG11	2.16	0.45
1:A:294:ILE:HD13	3:C:84:ALA:HB2	1.99	0.45
1:A:125:LEU:HD13	1:A:266:LEU:CD2	2.45	0.45
1:A:66:THR:HG22	1:A:67:ARG:CG	2.46	0.45
1:A:94:THR:HG23	1:A:248:THR:HB	1.98	0.45
2:B:181:GLN:CG	2:B:191:ALA:CB	2.89	0.45
1:A:154:MET:CE	1:A:176:ASN:HB2	2.47	0.45
1:A:175:THR:O	1:A:177:PRO:HD3	2.17	0.45
3:C:77:SER:HB3	3:C:81:GLU:OE1	2.17	0.45
1:A:194:PHE:HZ	1:A:200:ALA:CA	2.27	0.44
2:B:9:TYR:OH	2:B:116:LYS:HG2	2.18	0.44
1:A:123:CYS:C	1:A:125:LEU:N	2.71	0.44
2:B:105:GLY:O	2:B:106:PHE:CD1	2.70	0.44
2:B:32:VAL:HB	2:B:193:ILE:HG12	1.99	0.44
2:B:77:GLY:O	2:B:159:VAL:HG13	2.17	0.44
2:B:164:TYR:HA	3:C:66:MET:HE1	2.00	0.44
1:A:190:VAL:CG1	3:C:24:ILE:HB	2.46	0.44
1:A:247:ILE:HG22	1:A:248:THR:N	2.31	0.44
1:A:250:ARG:HH21	1:A:250:ARG:HG3	1.81	0.44
2:B:100:TYR:HD2	2:B:248:LEU:HD12	1.82	0.44
1:A:278:ASN:HD22	2:B:133:GLY:HA3	1.82	0.44
2:B:15:GLN:HG2	2:B:22:THR:HG21	1.99	0.44
2:B:222:LEU:HD21	2:B:232:ILE:HG12	1.99	0.44
1:A:208:TYR:O	2:B:208:ASN:HB3	2.18	0.44
1:A:106:TYR:HB2	1:A:171:TRP:HZ2	1.82	0.44

*Continued on next page...*

*Continued from previous page...*

Atom-1	Atom-2	Interatomic distance (Å)	Clash overlap (Å)
2:B:143:ASN:O	2:B:144:SER:HB2	2.17	0.44
1:A:123:CYS:C	1:A:125:LEU:H	2.19	0.44
1:A:136:THR:HG21	3:C:13:PHE:CD1	2.53	0.44
1:A:278:ASN:ND2	2:B:133:GLY:CA	2.81	0.44
3:C:131:MET:CE	3:C:196:ILE:HG22	2.48	0.44
1:A:155:TYR:HB3	1:A:177:PRO:HG2	1.99	0.43
2:B:129:GLU:OE1	2:B:209:HIS:CE1	2.70	0.43
3:C:115:LEU:HD11	3:C:172:ILE:CD1	2.39	0.43
3:C:170:PRO:HG2	3:C:171:TRP:H	1.83	0.43
2:B:7:CYS:HA	2:B:28:ALA:CB	2.47	0.43
1:A:238:VAL:HG12	1:A:239:GLY:N	2.33	0.43
3:C:125:PHE:O	3:C:125:PHE:CG	2.72	0.43
1:A:171:TRP:CH2	1:A:234:SER:HB3	2.54	0.43
2:B:228:ALA:O	2:B:229:THR:C	2.56	0.43
1:A:261:TRP:CD1	3:C:39:GLU:HB2	2.52	0.43
2:B:199:ASN:HB3	2:B:201:VAL:O	2.19	0.43
1:A:154:MET:HE1	1:A:176:ASN:HB2	2.00	0.43
1:A:86:ARG:HG2	3:C:16:THR:HG22	2.00	0.43
2:B:71:TRP:CE2	2:B:222:LEU:HB2	2.53	0.43
2:B:208:ASN:N	2:B:208:ASN:ND2	2.67	0.43
1:A:73:HIS:O	3:C:225:THR:HG21	2.18	0.43
2:B:175:LEU:HG	2:B:175:LEU:O	2.18	0.43
3:C:132:LEU:C	3:C:132:LEU:HD23	2.39	0.43
3:C:228:LEU:HD13	3:C:229:CYS:O	2.19	0.43
3:C:91:GLY:HA3	3:C:111:TRP:CH2	2.54	0.43
1:A:199:SER:CB	3:C:34:ILE:HG12	2.48	0.42
1:A:204:PHE:CE1	1:A:264:ARG:HD2	2.54	0.42
1:A:83:PHE:CD1	3:C:43:LEU:HD11	2.54	0.42
2:B:102:TYR:HD1	2:B:245:PHE:CE1	2.35	0.42
2:B:106:PHE:CD1	2:B:240:PRO:HA	2.54	0.42
2:B:186:ARG:HB2	3:C:123:GLY:O	2.19	0.42
3:C:14:LEU:C	3:C:16:THR:H	2.22	0.42
1:A:113:LEU:HD22	1:A:119:LEU:HD21	2.01	0.42
2:B:103:ARG:HH11	2:B:103:ARG:HG3	1.84	0.42
2:B:178:CYS:O	2:B:180:HIS:N	2.52	0.42
3:C:132:LEU:HD21	3:C:154:HIS:HB2	2.01	0.42
1:A:154:MET:HA	1:A:178:SER:HA	2.01	0.42
1:A:247:ILE:CG2	1:A:248:THR:N	2.82	0.42
2:B:79:TYR:CE2	2:B:158:ALA:HB3	2.54	0.42
3:C:193:ILE:N	3:C:193:ILE:HD12	2.34	0.42
2:B:118:HIS:CE1	2:B:232:ILE:HD11	2.55	0.42

*Continued on next page...*

*Continued from previous page...*

Atom-1	Atom-2	Interatomic distance (Å)	Clash overlap (Å)
1:A:264:ARG:NH1	2:B:128:PRO:O	2.53	0.42
2:B:147:PRO:HG2	2:B:150:THR:OG1	2.19	0.42
2:B:48:THR:HG21	2:B:203:PHE:CE2	2.55	0.42
2:B:68:THR:HG22	2:B:69:LYS:N	2.34	0.42
2:B:214:LEU:HD12	2:B:215:LEU:H	1.85	0.42
1:A:294:ILE:O	1:A:294:ILE:HG12	2.19	0.42
2:B:186:ARG:O	2:B:186:ARG:HG2	2.19	0.42
2:B:239:ALA:HA	2:B:240:PRO:HD3	1.87	0.42
3:C:82:LEU:HD12	3:C:196:ILE:O	2.19	0.42
1:A:235:ILE:O	1:A:236:ARG:HB3	2.20	0.42
2:B:198:MET:HG2	3:C:37:PRO:CG	2.47	0.42
2:B:42:CYS:HA	2:B:43:PRO:HD3	1.87	0.42
1:A:294:ILE:CD1	3:C:84:ALA:HB2	2.50	0.42
1:A:126:PHE:CD1	1:A:260:ALA:HB1	2.55	0.41
2:B:121:ALA:HB3	2:B:220:VAL:CB	2.48	0.41
2:B:78:TRP:HB2	2:B:216:VAL:CG2	2.50	0.41
2:B:102:TYR:CG	2:B:103:ARG:N	2.88	0.41
1:A:62:ASN:HB3	1:A:63:LEU:H	1.65	0.41
2:B:41:TYR:CE1	2:B:55:ARG:HD3	2.55	0.41
3:C:71:PHE:CZ	3:C:214:ILE:HB	2.54	0.41
3:C:233:GLU:CD	3:C:233:GLU:H	2.23	0.41
3:C:194:ILE:CD1	3:C:194:ILE:N	2.82	0.41
1:A:73:HIS:HB2	3:C:225:THR:HB	2.03	0.41
1:A:179:VAL:O	1:A:179:VAL:HG13	2.21	0.41
3:C:177:TYR:O	3:C:178:ARG:HD2	2.20	0.41
2:B:225:ASN:O	2:B:226:THR:C	2.59	0.41
2:B:60:VAL:HG13	2:B:92:PHE:HD1	1.86	0.41
2:B:116:LYS:HD3	3:C:125:PHE:CD1	2.56	0.41
2:B:45:THR:O	2:B:47:ALA:N	2.53	0.41
1:A:120:ARG:O	1:A:124:GLU:HG3	2.21	0.41
3:C:143:PRO:HB2	3:C:197:TRP:CZ2	2.46	0.40
3:C:159:PHE:HA	3:C:162:GLN:O	2.21	0.40
3:C:61:ASN:HA	3:C:61:ASN:HD22	1.65	0.40
1:A:168:SER:C	1:A:170:ALA:N	2.74	0.40
2:B:6:ALA:HA	2:B:30:ASN:ND2	2.36	0.40
1:A:134:GLU:HG3	3:C:21:SER:OG	2.21	0.40
2:B:129:GLU:OE2	2:B:209:HIS:NE2	2.44	0.40
2:B:80:TRP:HZ3	2:B:216:VAL:HG22	1.87	0.40

There are no symmetry-related clashes.

## 5.3 Torsion angles [i](#)

### 5.3.1 Protein backbone [i](#)

In the following table, the Percentiles column shows the percent Ramachandran outliers of the chain as a percentile score with respect to all X-ray entries followed by that with respect to entries of similar resolution.

The Analysed column shows the number of residues for which the backbone conformation was analysed, and the total number of residues.

Mol	Chain	Analysed	Favoured	Allowed	Outliers	Percentiles	
1	A	224/297 (75%)	193 (86%)	22 (10%)	9 (4%)	3	17
2	B	235/254 (92%)	191 (81%)	36 (15%)	8 (3%)	3	20
3	C	227/242 (94%)	196 (86%)	26 (12%)	5 (2%)	6	31
All	All	686/793 (86%)	580 (84%)	84 (12%)	22 (3%)	4	22

All (22) Ramachandran outliers are listed below:

Mol	Chain	Res	Type
1	A	193	PRO
2	B	58	VAL
2	B	144	SER
1	A	124	GLU
2	B	29	ALA
2	B	35	TYR
2	B	46	ASP
3	C	15	THR
2	B	42	CYS
1	A	86	ARG
1	A	111	ILE
2	B	100	TYR
2	B	179	PRO
1	A	67	ARG
1	A	117	ALA
3	C	123	GLY
1	A	99	GLY
1	A	277	PRO
3	C	43	LEU
3	C	125	PHE
3	C	228	LEU
1	A	262	ILE



### 5.3.2 Protein sidechains ⓘ

In the following table, the Percentiles column shows the percent sidechain outliers of the chain as a percentile score with respect to all X-ray entries followed by that with respect to entries of similar resolution.

The Analysed column shows the number of residues for which the sidechain conformation was analysed, and the total number of residues.

Mol	Chain	Analysed	Rotameric	Outliers	Percentiles	
1	A	204/257 (79%)	196 (96%)	8 (4%)	32	69
2	B	202/212 (95%)	195 (96%)	7 (4%)	36	71
3	C	197/204 (97%)	185 (94%)	12 (6%)	18	53
All	All	603/673 (90%)	576 (96%)	27 (4%)	27	64

All (27) residues with a non-rotameric sidechain are listed below:

Mol	Chain	Res	Type
1	A	124	GLU
1	A	219	ASP
1	A	221	ASP
1	A	230	MET
1	A	235	ILE
1	A	249	LEU
1	A	258	VAL
1	A	292	ASP
2	B	7	CYS
2	B	61	ASN
2	B	81	LYS
2	B	95	ASN
2	B	155	GLN
2	B	190	CYS
2	B	201	VAL
3	C	13	PHE
3	C	21	SER
3	C	25	LEU
3	C	72	PRO
3	C	93	ASP
3	C	173	SER
3	C	175	THR
3	C	189	TYR
3	C	217	LEU
3	C	225	THR
3	C	233	GLU

*Continued on next page...*

*Continued from previous page...*

Mol	Chain	Res	Type
3	C	235	ILE

Some sidechains can be flipped to improve hydrogen bonding and reduce clashes. All (21) such sidechains are listed below:

Mol	Chain	Res	Type
1	A	71	ASN
1	A	73	HIS
1	A	76	GLN
1	A	101	GLN
1	A	102	ASN
1	A	172	GLN
1	A	224	GLN
1	A	269	GLN
1	A	278	ASN
2	B	15	GLN
2	B	30	ASN
2	B	94	GLN
2	B	111	GLN
2	B	145	HIS
2	B	152	GLN
2	B	199	ASN
2	B	208	ASN
2	B	225	ASN
3	C	11	ASN
3	C	56	ASN
3	C	61	ASN

### 5.3.3 RNA [i](#)

There are no RNA molecules in this entry.

### 5.4 Non-standard residues in protein, DNA, RNA chains [i](#)

There are no non-standard protein/DNA/RNA residues in this entry.

### 5.5 Carbohydrates [i](#)

There are no carbohydrates in this entry.

## 5.6 Ligand geometry

There are no ligands in this entry.

## 5.7 Other polymers

There are no such residues in this entry.

## 5.8 Polymer linkage issues

There are no chain breaks in this entry.

## 6 Fit of model and data [i](#)

### 6.1 Protein, DNA and RNA chains [i](#)

In the following table, the column labelled ‘#RSRZ> 2’ contains the number (and percentage) of RSRZ outliers, followed by percent RSRZ outliers for the chain as percentile scores relative to all X-ray entries and entries of similar resolution. The OWAB column contains the minimum, median, 95<sup>th</sup> percentile and maximum values of the occupancy-weighted average B-factor per residue. The column labelled ‘Q< 0.9’ lists the number of (and percentage) of residues with an average occupancy less than 0.9.

Mol	Chain	Analysed	<RSRZ>	#RSRZ>2	OWAB(Å <sup>2</sup> )	Q<0.9
1	A	228/297 (76%)	-0.50	2 (0%) 84 63	14, 48, 125, 173	0
2	B	239/254 (94%)	-0.34	4 (1%) 70 41	23, 52, 157, 194	0
3	C	231/242 (95%)	-0.59	0 100 100	16, 42, 105, 139	0
All	All	698/793 (88%)	-0.48	6 (0%) 84 63	14, 46, 140, 194	0

All (6) RSRZ outliers are listed below:

Mol	Chain	Res	Type	RSRZ
2	B	50	VAL	2.9
1	A	100	THR	2.7
2	B	11	ASP	2.6
2	B	143	ASN	2.5
1	A	73	HIS	2.3
2	B	12	ARG	2.2

### 6.2 Non-standard residues in protein, DNA, RNA chains [i](#)

There are no non-standard protein/DNA/RNA residues in this entry.

### 6.3 Carbohydrates [i](#)

There are no carbohydrates in this entry.

### 6.4 Ligands [i](#)

There are no ligands in this entry.

## 6.5 Other polymers

There are no such residues in this entry.