



wwPDB X-ray Structure Validation Summary Report ⓘ

Sep 26, 2022 – 12:17 PM JST

PDB ID : 6JGL
Title : Crystal structure of barley exohydrolaseI W434H mutant in complex with methyl 2-thio-beta-sophoroside
Authors : Luang, S.; Streltsov, V.A.; Hrmova, M.
Deposited on : 2019-02-14
Resolution : 1.92 Å(reported)

This is a wwPDB X-ray Structure Validation Summary Report for a publicly released PDB entry.

We welcome your comments at validation@mail.wwpdb.org

A user guide is available at

<https://www.wwpdb.org/validation/2017/XrayValidationReportHelp>

with specific help available everywhere you see the ⓘ symbol.

The types of validation reports are described at

<http://www.wwpdb.org/validation/2017/FAQs#types>.

The following versions of software and data (see [references ⓘ](#)) were used in the production of this report:

MolProbity	:	4.02b-467
Mogul	:	1.8.5 (274361), CSD as541be (2020)
Xtriage (Phenix)	:	1.13
EDS	:	2.31.2
Percentile statistics	:	20191225.v01 (using entries in the PDB archive December 25th 2019)
Refmac	:	5.8.0158
CCP4	:	7.0.044 (Gargrove)
Ideal geometry (proteins)	:	Engh & Huber (2001)
Ideal geometry (DNA, RNA)	:	Parkinson et al. (1996)
Validation Pipeline (wwPDB-VP)	:	2.31.2

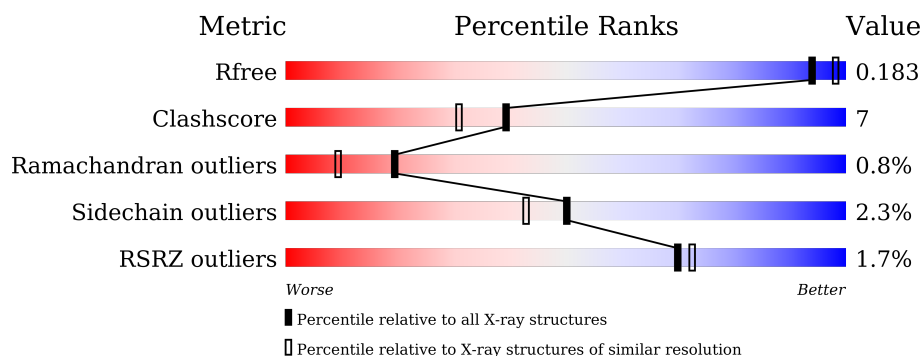
1 Overall quality at a glance

The following experimental techniques were used to determine the structure:

X-RAY DIFFRACTION

The reported resolution of this entry is 1.92 Å.

Percentile scores (ranging between 0-100) for global validation metrics of the entry are shown in the following graphic. The table shows the number of entries on which the scores are based.



Metric	Whole archive (#Entries)	Similar resolution (#Entries, resolution range(Å))
R_{free}	130704	7937 (1.94-1.90)
Clashscore	141614	8644 (1.94-1.90)
Ramachandran outliers	138981	8530 (1.94-1.90)
Sidechain outliers	138945	8530 (1.94-1.90)
RSRZ outliers	127900	7793 (1.94-1.90)

The table below summarises the geometric issues observed across the polymeric chains and their fit to the electron density. The red, orange, yellow and green segments of the lower bar indicate the fraction of residues that contain outliers for ≥ 3 , 2, 1 and 0 types of geometric quality criteria respectively. A grey segment represents the fraction of residues that are not modelled. The numeric value for each fraction is indicated below the corresponding segment, with a dot representing fractions $\leq 5\%$. The upper red bar (where present) indicates the fraction of residues that have poor fit to the electron density. The numeric value is given above the bar.

Mol	Chain	Length	Quality of chain
1	A	609	<div> <div>2%</div> <div> <div></div> <div>87%</div> <div>10%</div> <div>..</div> </div> </div>
2	B	2	<div> <div>50%</div> <div>50%</div> </div>

The following table lists non-polymeric compounds, carbohydrate monomers and non-standard residues in protein, DNA, RNA chains that are outliers for geometric or electron-density-fit criteria:

Mol	Type	Chain	Res	Chirality	Geometry	Clashes	Electron density
7	ACT	A	714	-	-	X	-

2 Entry composition

There are 8 unique types of molecules in this entry. The entry contains 5407 atoms, of which 0 are hydrogens and 0 are deuteriums.

In the tables below, the ZeroOcc column contains the number of atoms modelled with zero occupancy, the AltConf column contains the number of residues with at least one atom in alternate conformation and the Trace column contains the number of residues modelled with at most 2 atoms.

- Molecule 1 is a protein called BETA-D-GLUCAN GLUCOHYDROLASE ISOENZYME EXO1.

Mol	Chain	Residues	Atoms					ZeroOcc	AltConf	Trace
1	A	604	Total	C	N	O	S	0	9	0
			4587	2898	795	866	28			

There are 6 discrepancies between the modelled and reference sequences:

Chain	Residue	Modelled	Actual	Comment	Reference
A	-3	HIS	-	expression tag	UNP A0A287SCR5
A	-2	HIS	-	expression tag	UNP A0A287SCR5
A	-1	ALA	-	expression tag	UNP A0A287SCR5
A	0	ALA	-	expression tag	UNP A0A287SCR5
A	320	LYS	ASN	See sequence details	UNP A0A287SCR5
A	434	HIS	TRP	engineered mutation	UNP A0A287SCR5

- Molecule 2 is an oligosaccharide called beta-D-glucopyranose-(1-2)-methyl 2-thio-beta-D-glucopyranoside.

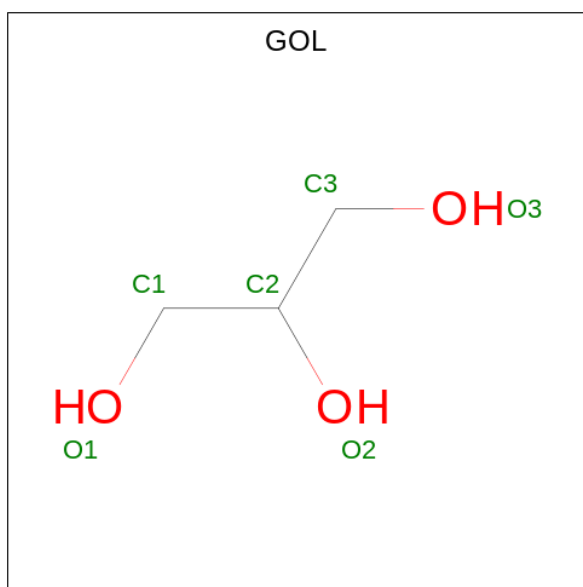
Mol	Chain	Residues	Atoms				ZeroOcc	AltConf	Trace
2	B	2	Total	C	O	S	0	0	0
			24	13	10	1			

- Molecule 3 is 2-acetamido-2-deoxy-beta-D-glucopyranose (three-letter code: NAG) (formula: C₈H₁₅NO₆).



Mol	Chain	Residues	Atoms				ZeroOcc	AltConf
3	A	1	Total	C	N	O	0	0
			14	8	1	5		
3	A	1	Total	C	N	O	0	0
			14	8	1	5		
3	A	1	Total	C	N	O	0	0
			14	8	1	5		

- Molecule 4 is GLYCEROL (three-letter code: GOL) (formula: $C_3H_8O_3$).



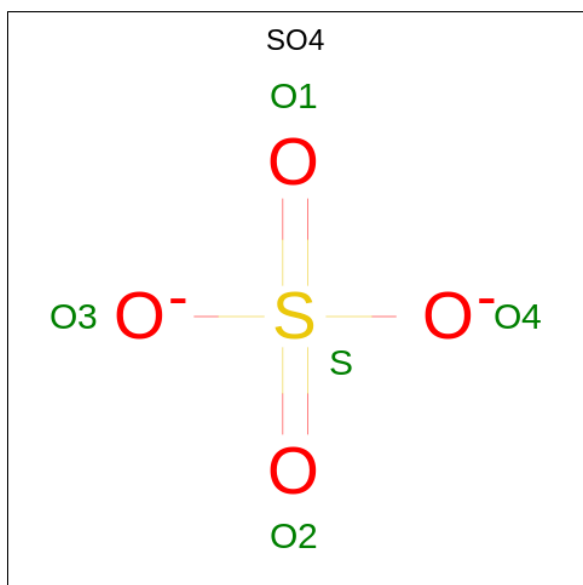
Mol	Chain	Residues	Atoms			ZeroOcc	AltConf
4	A	1	Total	C	O	0	0
			6	3	3		

Continued on next page...

Continued from previous page...

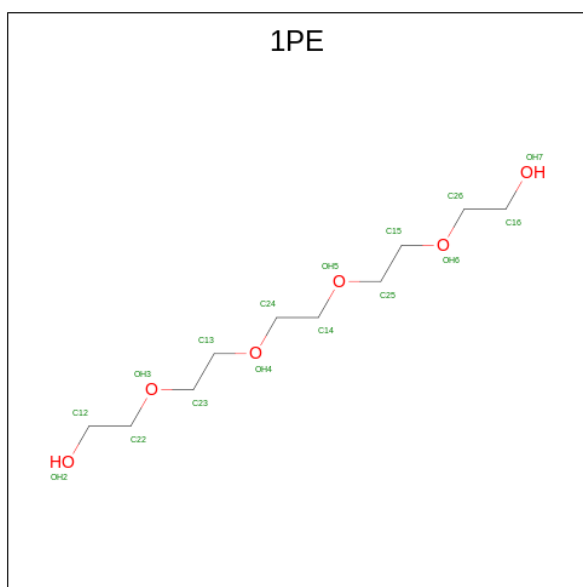
Mol	Chain	Residues	Atoms			ZeroOcc	AltConf
4	A	1	Total	C	O	0	0
			6	3	3		
4	A	1	Total	C	O	0	0
			6	3	3		

- Molecule 5 is SULFATE ION (three-letter code: SO4) (formula: O₄S).



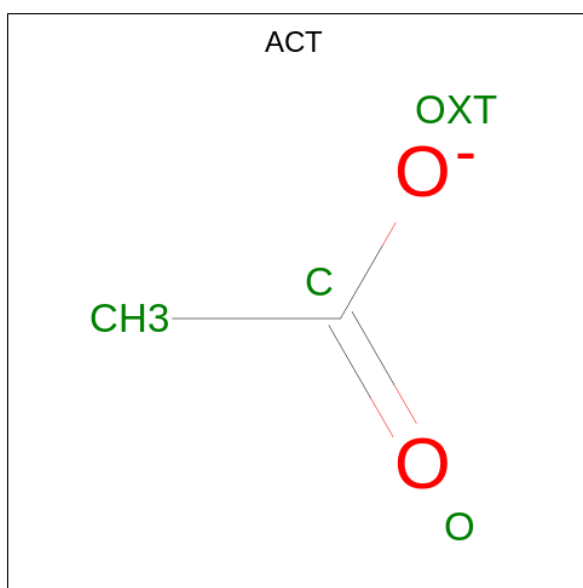
Mol	Chain	Residues	Atoms			ZeroOcc	AltConf
5	A	1	Total	O	S	0	0
			5	4	1		
5	A	1	Total	O	S	0	0
			5	4	1		
5	A	1	Total	O	S	0	0
			5	4	1		
5	A	1	Total	O	S	0	0
			5	4	1		

- Molecule 6 is PENTAETHYLENE GLYCOL (three-letter code: 1PE) (formula: C₁₀H₂₂O₆).



Mol	Chain	Residues	Atoms			ZeroOcc	AltConf
6	A	1	Total	C	O	0	1
			8	5	3		
6	A	1	Total	C	O	0	0
			7	5	2		

- Molecule 7 is ACETATE ION (three-letter code: ACT) (formula: $\text{C}_2\text{H}_3\text{O}_2$).



Mol	Chain	Residues	Atoms	ZeroOcc	AltConf
7	A	1	Total C O 4 2 2	0	0
7	A	1	Total C O 4 2 2	0	0

Continued on next page...

Continued from previous page...

Mol	Chain	Residues	Atoms			ZeroOcc	AltConf
7	A	1	Total	C	O	0	0
			4	2	2		
7	A	1	Total	C	O	0	0
			4	2	2		
7	A	1	Total	C	O	0	0
			4	2	2		

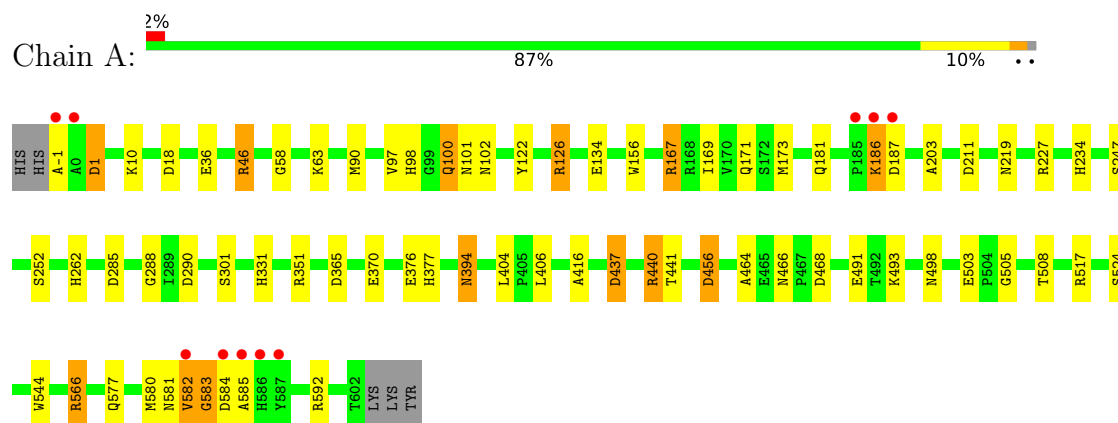
- Molecule 8 is water.

Mol	Chain	Residues	Atoms		ZeroOcc	AltConf
8	A	681	Total	O	0	0
			681	681		

3 Residue-property plots

These plots are drawn for all protein, RNA, DNA and oligosaccharide chains in the entry. The first graphic for a chain summarises the proportions of the various outlier classes displayed in the second graphic. The second graphic shows the sequence view annotated by issues in geometry and electron density. Residues are color-coded according to the number of geometric quality criteria for which they contain at least one outlier: green = 0, yellow = 1, orange = 2 and red = 3 or more. A red dot above a residue indicates a poor fit to the electron density ($RSRZ > 2$). Stretches of 2 or more consecutive residues without any outlier are shown as a green connector. Residues present in the sample, but not in the model, are shown in grey.

- Molecule 1: BETA-D-GLUCAN GLUCOHYDROLASE ISOENZYME EXO1



- Molecule 2: beta-D-glucopyranose-(1-2)-methyl 2-thio-beta-D-glucopyranoside



4 Data and refinement statistics

Property	Value	Source
Space group	P 43 21 2	Depositor
Cell constants a, b, c, α , β , γ	100.21Å 100.21Å 182.12Å 90.00° 90.00° 90.00°	Depositor
Resolution (Å)	48.36 – 1.92 48.31 – 1.92	Depositor EDS
% Data completeness (in resolution range)	99.9 (48.36-1.92) 99.9 (48.31-1.92)	Depositor EDS
R_{merge}	0.11	Depositor
R_{sym}	(Not available)	Depositor
$\langle I/\sigma(I) \rangle$ ¹	3.60 (at 1.92Å)	Xtriage
Refinement program	REFMAC 5.7.0029	Depositor
R, R_{free}	0.141 , 0.173 0.156 , 0.183	Depositor DCC
R_{free} test set	3594 reflections (5.05%)	wwPDB-VP
Wilson B-factor (Å ²)	21.4	Xtriage
Anisotropy	0.113	Xtriage
Bulk solvent k_{sol} (e/Å ³), B_{sol} (Å ²)	0.37 , 54.0	EDS
L-test for twinning ²	$\langle L \rangle = 0.48$, $\langle L^2 \rangle = 0.31$	Xtriage
Estimated twinning fraction	No twinning to report.	Xtriage
F_o, F_c correlation	0.96	EDS
Total number of atoms	5407	wwPDB-VP
Average B, all atoms (Å ²)	24.0	wwPDB-VP

Xtriage's analysis on translational NCS is as follows: *The largest off-origin peak in the Patterson function is 3.71% of the height of the origin peak. No significant pseudotranslation is detected.*

¹Intensities estimated from amplitudes.

²Theoretical values of $\langle |L| \rangle$, $\langle L^2 \rangle$ for acentric reflections are 0.5, 0.333 respectively for untwinned datasets, and 0.375, 0.2 for perfectly twinned datasets.

5 Model quality [i](#)

5.1 Standard geometry [i](#)

Bond lengths and bond angles in the following residue types are not validated in this section: SO4, 1PE, U2A, BGC, NAG, ACT, GOL

The Z score for a bond length (or angle) is the number of standard deviations the observed value is removed from the expected value. A bond length (or angle) with $|Z| > 5$ is considered an outlier worth inspection. RMSZ is the root-mean-square of all Z scores of the bond lengths (or angles).

Mol	Chain	Bond lengths		Bond angles	
		RMSZ	$\# Z > 5$	RMSZ	$\# Z > 5$
1	A	1.05	4/4720 (0.1%)	1.08	22/6408 (0.3%)

Chiral center outliers are detected by calculating the chiral volume of a chiral center and verifying if the center is modelled as a planar moiety or with the opposite hand. A planarity outlier is detected by checking planarity of atoms in a peptide group, atoms in a mainchain group or atoms of a sidechain that are expected to be planar.

Mol	Chain	#Chirality outliers	#Planarity outliers
1	A	0	1

All (4) bond length outliers are listed below:

Mol	Chain	Res	Type	Atoms	Z	Observed(Å)	Ideal(Å)
1	A	503	GLU	CD-OE2	10.75	1.37	1.25
1	A	517[A]	ARG	CZ-NH1	7.43	1.42	1.33
1	A	370	GLU	CD-OE2	6.68	1.33	1.25
1	A	126	ARG	CD-NE	-6.36	1.35	1.46

The worst 5 of 22 bond angle outliers are listed below:

Mol	Chain	Res	Type	Atoms	Z	Observed(°)	Ideal(°)
1	A	126	ARG	NE-CZ-NH2	-15.20	112.70	120.30
1	A	126	ARG	NE-CZ-NH1	14.83	127.72	120.30
1	A	440[A]	ARG	NE-CZ-NH2	-11.84	114.38	120.30
1	A	46	ARG	NE-CZ-NH2	11.68	126.14	120.30
1	A	456	ASP	CB-CG-OD2	-9.50	109.75	118.30

There are no chirality outliers.

All (1) planarity outliers are listed below:

Mol	Chain	Res	Type	Group
1	A	187	ASP	Peptide

5.2 Too-close contacts ⓘ

In the following table, the Non-H and H(model) columns list the number of non-hydrogen atoms and hydrogen atoms in the chain respectively. The H(added) column lists the number of hydrogen atoms added and optimized by MolProbity. The Clashes column lists the number of clashes within the asymmetric unit, whereas Symm-Clashes lists symmetry-related clashes.

Mol	Chain	Non-H	H(model)	H(added)	Clashes	Symm-Clashes
1	A	4587	0	4545	57	0
2	B	24	0	10	3	0
3	A	42	0	39	4	0
4	A	18	0	19	6	0
5	A	20	0	0	1	0
6	A	15	0	10	4	1
7	A	20	0	15	3	0
8	A	681	0	0	22	1
All	All	5407	0	4638	70	1

The all-atom clashscore is defined as the number of clashes found per 1000 atoms (including hydrogen atoms). The all-atom clashscore for this structure is 7.

The worst 5 of 70 close contacts within the same asymmetric unit are listed below, sorted by their clash magnitude.

Atom-1	Atom-2	Interatomic distance (Å)	Clash overlap (Å)
1:A:498:ASN:HD21	3:A:704:NAG:C1	1.08	1.65
1:A:498:ASN:ND2	3:A:704:NAG:C1	1.92	1.29
4:A:706:GOL:H32	8:A:809:HOH:O	1.48	1.11
1:A:498:ASN:HB3	8:A:1078:HOH:O	1.52	1.07
8:A:809:HOH:O	2:B:1:U2A:O6	1.75	1.03

All (1) symmetry-related close contacts are listed below. The label for Atom-2 includes the symmetry operator and encoded unit-cell translations to be applied.

Atom-1	Atom-2	Interatomic distance (Å)	Clash overlap (Å)
6:A:712[B]:1PE:C24	8:A:863:HOH:O[3_554]	1.89	0.31

5.3 Torsion angles

5.3.1 Protein backbone

In the following table, the Percentiles column shows the percent Ramachandran outliers of the chain as a percentile score with respect to all X-ray entries followed by that with respect to entries of similar resolution.

The Analysed column shows the number of residues for which the backbone conformation was analysed, and the total number of residues.

Mol	Chain	Analysed	Favoured	Allowed	Outliers	Percentiles	
1	A	608/609 (100%)	586 (96%)	17 (3%)	5 (1%)	19	9

All (5) Ramachandran outliers are listed below:

Mol	Chain	Res	Type
1	A	582	VAL
1	A	584	ASP
1	A	505	GLY
1	A	585	ALA
1	A	583	GLY

5.3.2 Protein sidechains

In the following table, the Percentiles column shows the percent sidechain outliers of the chain as a percentile score with respect to all X-ray entries followed by that with respect to entries of similar resolution.

The Analysed column shows the number of residues for which the sidechain conformation was analysed, and the total number of residues.

Mol	Chain	Analysed	Rotameric	Outliers	Percentiles	
1	A	491/490 (100%)	480 (98%)	11 (2%)	52	45

5 of 11 residues with a non-rotameric sidechain are listed below:

Mol	Chain	Res	Type
1	A	290	ASP
1	A	394	ASN
1	A	493	LYS
1	A	440[A]	ARG
1	A	98	HIS

Sometimes sidechains can be flipped to improve hydrogen bonding and reduce clashes. 5 of 15

such sidechains are listed below:

Mol	Chain	Res	Type
1	A	199	ASN
1	A	394	ASN
1	A	219	ASN
1	A	498	ASN
1	A	331	HIS

5.3.3 RNA ⓘ

There are no RNA molecules in this entry.

5.4 Non-standard residues in protein, DNA, RNA chains ⓘ

2 non-standard protein/DNA/RNA residues are modelled in this entry.

In the following table, the Counts columns list the number of bonds (or angles) for which Mogul statistics could be retrieved, the number of bonds (or angles) that are observed in the model and the number of bonds (or angles) that are defined in the Chemical Component Dictionary. The Link column lists molecule types, if any, to which the group is linked. The Z score for a bond length (or angle) is the number of standard deviations the observed value is removed from the expected value. A bond length (or angle) with $|Z| > 2$ is considered an outlier worth inspection. RMSZ is the root-mean-square of all Z scores of the bond lengths (or angles).

Mol	Type	Chain	Res	Link	Bond lengths			Bond angles		
					Counts	RMSZ	$\# Z > 2$	Counts	RMSZ	$\# Z > 2$
3	NAG	A	702	1	14,14,15	0.83	0	17,19,21	1.66	5 (29%)
3	NAG	A	703	1	14,14,15	1.07	1 (7%)	17,19,21	1.93	7 (41%)

In the following table, the Chirals column lists the number of chiral outliers, the number of chiral centers analysed, the number of these observed in the model and the number defined in the Chemical Component Dictionary. Similar counts are reported in the Torsion and Rings columns. '-' means no outliers of that kind were identified.

Mol	Type	Chain	Res	Link	Chirals	Torsions	Rings
3	NAG	A	702	1	-	2/6/23/26	0/1/1/1
3	NAG	A	703	1	-	0/6/23/26	0/1/1/1

All (1) bond length outliers are listed below:

Mol	Chain	Res	Type	Atoms	Z	Observed(Å)	Ideal(Å)
3	A	703	NAG	C1-C2	2.22	1.55	1.52

The worst 5 of 12 bond angle outliers are listed below:

Mol	Chain	Res	Type	Atoms	Z	Observed(°)	Ideal(°)
3	A	702	NAG	O7-C7-C8	-3.72	115.15	122.06
3	A	703	NAG	O5-C1-C2	-3.45	105.84	111.29
3	A	703	NAG	O3-C3-C2	-3.31	102.61	109.47
3	A	702	NAG	C1-C2-N2	3.16	115.89	110.49
3	A	702	NAG	O5-C5-C6	2.55	111.20	107.20

There are no chirality outliers.

All (2) torsion outliers are listed below:

Mol	Chain	Res	Type	Atoms
3	A	702	NAG	C4-C5-C6-O6
3	A	702	NAG	O5-C5-C6-O6

There are no ring outliers.

No monomer is involved in short contacts.

5.5 Carbohydrates [i](#)

2 monosaccharides are modelled in this entry.

In the following table, the Counts columns list the number of bonds (or angles) for which Mogul statistics could be retrieved, the number of bonds (or angles) that are observed in the model and the number of bonds (or angles) that are defined in the Chemical Component Dictionary. The Link column lists molecule types, if any, to which the group is linked. The Z score for a bond length (or angle) is the number of standard deviations the observed value is removed from the expected value. A bond length (or angle) with $|Z| > 2$ is considered an outlier worth inspection. RMSZ is the root-mean-square of all Z scores of the bond lengths (or angles).

Mol	Type	Chain	Res	Link	Bond lengths			Bond angles		
					Counts	RMSZ	# Z > 2	Counts	RMSZ	# Z > 2
2	U2A	B	1	2,4	12,13,13	1.01	1 (8%)	14,18,18	1.72	4 (28%)
2	BGC	B	2	2	11,11,12	1.76	3 (27%)	15,15,17	1.86	5 (33%)

In the following table, the Chirals column lists the number of chiral outliers, the number of chiral centers analysed, the number of these observed in the model and the number defined in the Chemical Component Dictionary. Similar counts are reported in the Torsion and Rings columns. '-' means no outliers of that kind were identified.

Mol	Type	Chain	Res	Link	Chirals	Torsions	Rings
2	U2A	B	1	2,4	-	2/4/24/24	0/1/1/1

Continued on next page...

Continued from previous page...

Mol	Type	Chain	Res	Link	Chirals	Torsions	Rings
2	BGC	B	2	2	-	0/2/19/22	0/1/1/1

All (4) bond length outliers are listed below:

Mol	Chain	Res	Type	Atoms	Z	Observed(Å)	Ideal(Å)
2	B	2	BGC	O3-C3	3.02	1.50	1.43
2	B	2	BGC	C2-C3	2.90	1.56	1.52
2	B	1	U2A	O1-C1	2.28	1.44	1.40
2	B	2	BGC	C1-C2	2.07	1.56	1.52

The worst 5 of 9 bond angle outliers are listed below:

Mol	Chain	Res	Type	Atoms	Z	Observed(°)	Ideal(°)
2	B	2	BGC	C1-C2-C3	3.79	114.32	109.67
2	B	1	U2A	O4-C4-C3	3.65	118.80	110.35
2	B	1	U2A	O3-C3-C4	3.01	117.31	110.35
2	B	2	BGC	O4-C4-C5	2.92	116.54	109.30
2	B	2	BGC	O2-C2-C1	2.87	115.03	109.15

There are no chirality outliers.

All (2) torsion outliers are listed below:

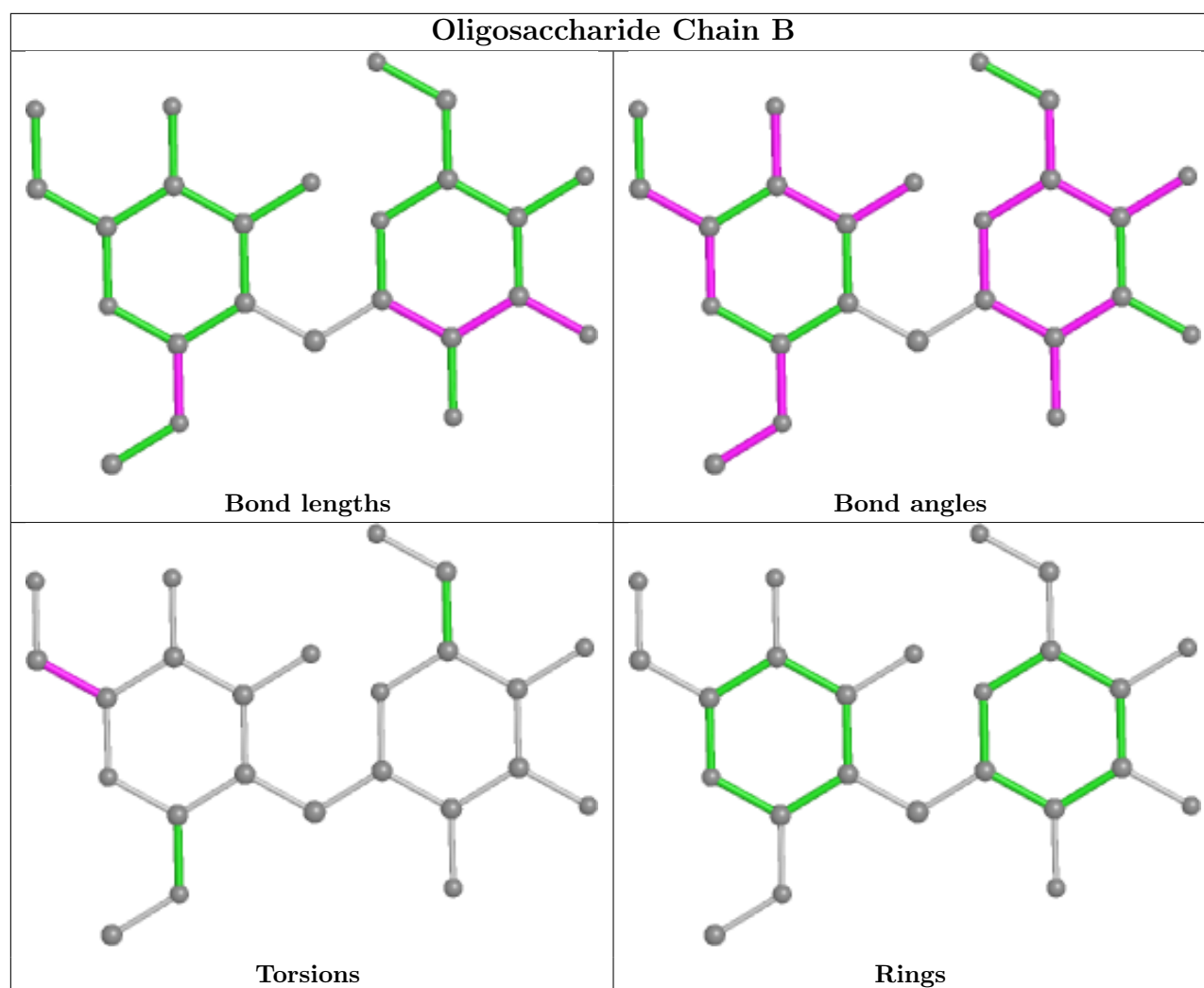
Mol	Chain	Res	Type	Atoms
2	B	1	U2A	O5-C5-C6-O6
2	B	1	U2A	C4-C5-C6-O6

There are no ring outliers.

1 monomer is involved in 3 short contacts:

Mol	Chain	Res	Type	Clashes	Symm-Clashes
2	B	1	U2A	3	0

The following is a two-dimensional graphical depiction of Mogul quality analysis of bond lengths, bond angles, torsion angles, and ring geometry for oligosaccharide.



5.6 Ligand geometry [i](#)

17 ligands are modelled in this entry.

In the following table, the Counts columns list the number of bonds (or angles) for which Mogul statistics could be retrieved, the number of bonds (or angles) that are observed in the model and the number of bonds (or angles) that are defined in the Chemical Component Dictionary. The Link column lists molecule types, if any, to which the group is linked. The Z score for a bond length (or angle) is the number of standard deviations the observed value is removed from the expected value. A bond length (or angle) with $|Z| > 2$ is considered an outlier worth inspection. RMSZ is the root-mean-square of all Z scores of the bond lengths (or angles).

Mol	Type	Chain	Res	Link	Bond lengths			Bond angles		
					Counts	RMSZ	$\# Z > 2$	Counts	RMSZ	$\# Z > 2$
5	SO4	A	709	-	4,4,4	0.63	0	6,6,6	0.42	0
7	ACT	A	714	-	3,3,3	1.23	0	3,3,3	0.64	0
7	ACT	A	718	-	3,3,3	0.79	0	3,3,3	1.15	0
4	GOL	A	706	2	5,5,5	0.42	0	5,5,5	1.05	0

Mol	Type	Chain	Res	Link	Bond lengths			Bond angles		
					Counts	RMSZ	# Z > 2	Counts	RMSZ	# Z > 2
4	GOL	A	707	-	5,5,5	0.92	0	5,5,5	0.81	0
6	1PE	A	713	-	6,6,15	0.53	0	5,5,14	0.41	0
5	SO4	A	708	-	4,4,4	0.55	0	6,6,6	1.56	1 (16%)
3	NAG	A	704	-	14,14,15	0.96	0	17,19,21	3.16	7 (41%)
7	ACT	A	716	-	3,3,3	0.67	0	3,3,3	1.28	0
5	SO4	A	710	-	4,4,4	0.29	0	6,6,6	0.75	0
4	GOL	A	705	-	5,5,5	0.54	0	5,5,5	1.18	0
7	ACT	A	717	-	3,3,3	0.98	0	3,3,3	0.79	0
5	SO4	A	711	-	4,4,4	0.29	0	6,6,6	0.79	0
3	NAG	A	703	1	14,14,15	1.07	1 (7%)	17,19,21	1.93	7 (41%)
3	NAG	A	702	1	14,14,15	0.83	0	17,19,21	1.66	5 (29%)
7	ACT	A	715	-	3,3,3	0.90	0	3,3,3	0.83	0

In the following table, the Chirals column lists the number of chiral outliers, the number of chiral centers analysed, the number of these observed in the model and the number defined in the Chemical Component Dictionary. Similar counts are reported in the Torsion and Rings columns. '-' means no outliers of that kind were identified.

Mol	Type	Chain	Res	Link	Chirals	Torsions	Rings
4	GOL	A	706	2	-	4/4/4/4	-
4	GOL	A	707	-	-	2/4/4/4	-
6	1PE	A	713	-	-	2/4/4/13	-
3	NAG	A	704	-	-	4/6/23/26	0/1/1/1
4	GOL	A	705	-	-	2/4/4/4	-
3	NAG	A	703	1	-	0/6/23/26	0/1/1/1
3	NAG	A	702	1	-	2/6/23/26	0/1/1/1

All (1) bond length outliers are listed below:

Mol	Chain	Res	Type	Atoms	Z	Observed(Å)	Ideal(Å)
3	A	703	NAG	C1-C2	2.22	1.55	1.52

The worst 5 of 20 bond angle outliers are listed below:

Mol	Chain	Res	Type	Atoms	Z	Observed(°)	Ideal(°)
3	A	704	NAG	C4-C3-C2	-7.57	99.92	111.02
3	A	704	NAG	O5-C1-C2	-4.97	103.44	111.29
3	A	704	NAG	C1-C2-N2	4.72	118.55	110.49
3	A	704	NAG	C8-C7-N2	4.23	123.26	116.10
3	A	702	NAG	O7-C7-C8	-3.72	115.15	122.06

There are no chirality outliers.

5 of 16 torsion outliers are listed below:

Mol	Chain	Res	Type	Atoms
4	A	705	GOL	O1-C1-C2-O2
4	A	705	GOL	O1-C1-C2-C3
4	A	706	GOL	O1-C1-C2-C3
4	A	706	GOL	C1-C2-C3-O3
4	A	707	GOL	O1-C1-C2-O2

There are no ring outliers.

8 monomers are involved in 15 short contacts:

Mol	Chain	Res	Type	Clashes	Symm-Clashes
7	A	714	ACT	2	0
4	A	706	GOL	3	0
4	A	707	GOL	2	0
6	A	713	1PE	1	0
3	A	704	NAG	4	0
7	A	716	ACT	1	0
5	A	710	SO4	1	0
4	A	705	GOL	1	0

5.7 Other polymers [i](#)

There are no such residues in this entry.

5.8 Polymer linkage issues [i](#)

There are no chain breaks in this entry.

6 Fit of model and data [i](#)

6.1 Protein, DNA and RNA chains [i](#)

In the following table, the column labelled ‘#RSRZ> 2’ contains the number (and percentage) of RSRZ outliers, followed by percent RSRZ outliers for the chain as percentile scores relative to all X-ray entries and entries of similar resolution. The OWAB column contains the minimum, median, 95th percentile and maximum values of the occupancy-weighted average B-factor per residue. The column labelled ‘Q< 0.9’ lists the number of (and percentage) of residues with an average occupancy less than 0.9.

Mol	Chain	Analysed	<RSRZ>	#RSRZ>2	OWAB(Å ²)	Q<0.9
1	A	604/609 (99%)	-0.32	10 (1%) 70 72	13, 20, 35, 76	0

The worst 5 of 10 RSRZ outliers are listed below:

Mol	Chain	Res	Type	RSRZ
1	A	586	HIS	5.8
1	A	585	ALA	4.7
1	A	-1	ALA	4.7
1	A	0	ALA	4.7
1	A	187	ASP	4.5

6.2 Non-standard residues in protein, DNA, RNA chains [i](#)

In the following table, the Atoms column lists the number of modelled atoms in the group and the number defined in the chemical component dictionary. The B-factors column lists the minimum, median, 95th percentile and maximum values of B factors of atoms in the group. The column labelled ‘Q< 0.9’ lists the number of atoms with occupancy less than 0.9.

Mol	Type	Chain	Res	Atoms	RSCC	RSR	B-factors(Å ²)	Q<0.9
3	NAG	A	702	14/15	0.83	0.18	58,67,78,81	0
3	NAG	A	703	14/15	0.92	0.16	33,37,58,63	0

6.3 Carbohydrates [i](#)

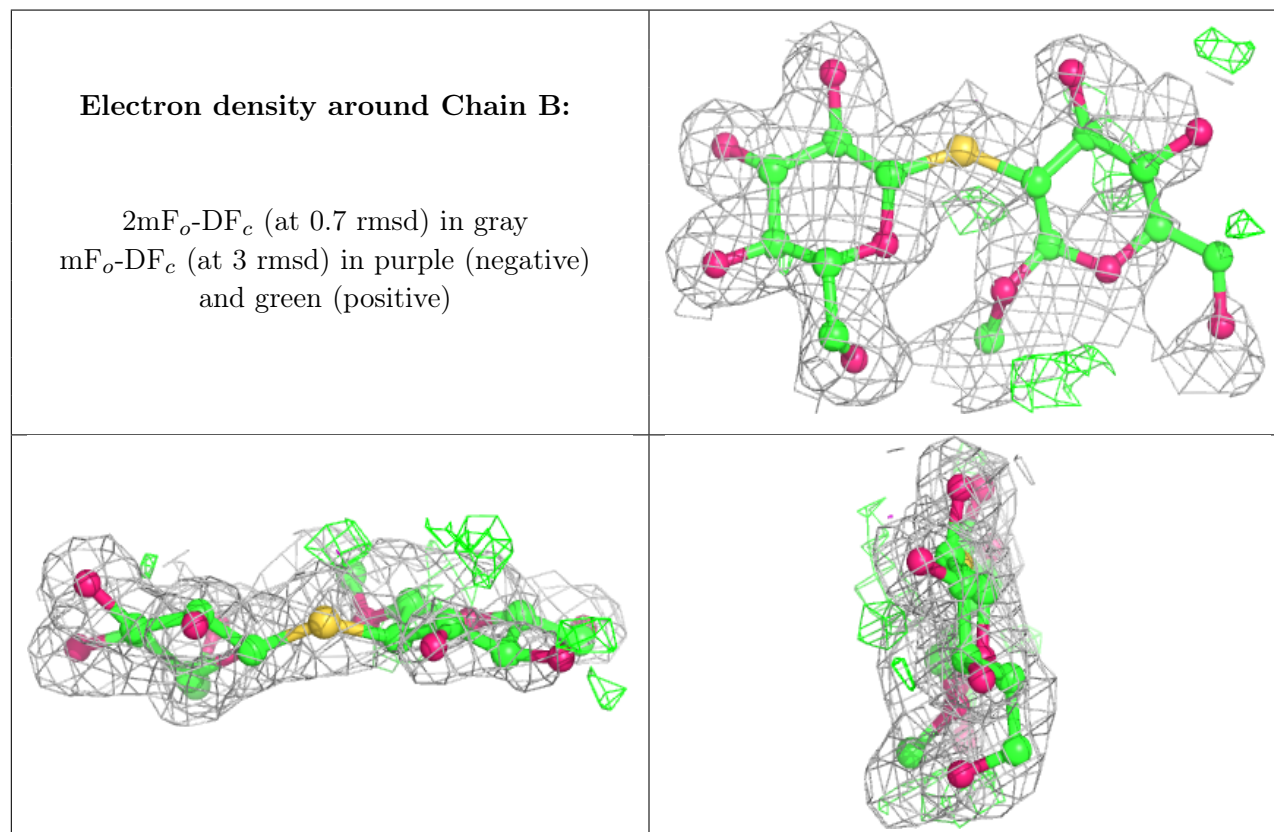
In the following table, the Atoms column lists the number of modelled atoms in the group and the number defined in the chemical component dictionary. The B-factors column lists the minimum, median, 95th percentile and maximum values of B factors of atoms in the group. The column labelled ‘Q< 0.9’ lists the number of atoms with occupancy less than 0.9.

Continued on next page...

Continued from previous page...

Mol	Type	Chain	Res	Atoms	RSCC	RSR	B-factors(\AA^2)	Q<0.9
2	U2A	B	1	13/13	0.92	0.20	28,39,43,46	12
2	BGC	B	2	11/12	0.96	0.10	18,24,31,32	0

The following is a graphical depiction of the model fit to experimental electron density for oligosaccharide. Each fit is shown from different orientation to approximate a three-dimensional view.



6.4 Ligands ⓘ

In the following table, the Atoms column lists the number of modelled atoms in the group and the number defined in the chemical component dictionary. The B-factors column lists the minimum, median, 95th percentile and maximum values of B factors of atoms in the group. The column labelled 'Q< 0.9' lists the number of atoms with occupancy less than 0.9.

Mol	Type	Chain	Res	Atoms	RSCC	RSR	B-factors(\AA^2)	Q<0.9
3	NAG	A	704	14/15	0.72	0.33	55,73,86,88	0
6	1PE	A	713	7/16	0.80	0.33	30,35,39,41	7
3	NAG	A	702	14/15	0.83	0.18	58,67,78,81	0
4	GOL	A	705	6/6	0.84	0.25	49,63,70,71	0

Continued on next page...

Continued from previous page...

Mol	Type	Chain	Res	Atoms	RSCC	RSR	B-factors(\AA^2)	Q<0.9
7	ACT	A	718	4/4	0.85	0.17	44,47,55,63	0
7	ACT	A	714	4/4	0.86	0.26	44,49,49,52	0
4	GOL	A	707	6/6	0.89	0.28	16,21,25,26	6
4	GOL	A	706	6/6	0.89	0.27	13,27,31,39	6
6	1PE	A	712[B]	8/16	0.90	0.23	33,40,51,53	0
5	SO4	A	711	5/5	0.90	0.25	38,42,45,45	5
7	ACT	A	716	4/4	0.91	0.14	54,56,61,69	0
7	ACT	A	715	4/4	0.92	0.11	47,51,53,55	0
3	NAG	A	703	14/15	0.92	0.16	33,37,58,63	0
5	SO4	A	709	5/5	0.92	0.23	60,64,77,80	0
7	ACT	A	717	4/4	0.93	0.17	33,49,54,55	0
5	SO4	A	708	5/5	0.97	0.09	24,26,30,33	5
5	SO4	A	710	5/5	0.97	0.17	31,32,34,37	5

6.5 Other polymers [i](#)

There are no such residues in this entry.