



## wwPDB EM Validation Summary Report ⓘ

Nov 14, 2022 – 04:58 AM EST

PDB ID : 7JGR  
EMDB ID : EMD-22329  
Title : Structure of Drosophila ORC bound to DNA (84 bp) and Cdc6  
Authors : Schmidt, J.M.; Bleichert, F.  
Deposited on : 2020-07-19  
Resolution : 3.90 Å(reported)

This is a wwPDB EM Validation Summary Report for a publicly released PDB entry.

We welcome your comments at [validation@mail.wwpdb.org](mailto:validation@mail.wwpdb.org)

A user guide is available at

<https://www.wwpdb.org/validation/2017/EMValidationReportHelp>

with specific help available everywhere you see the ⓘ symbol.

The types of validation reports are described at

<http://www.wwpdb.org/validation/2017/FAQs#types>.

---

The following versions of software and data (see [references ⓘ](#)) were used in the production of this report:

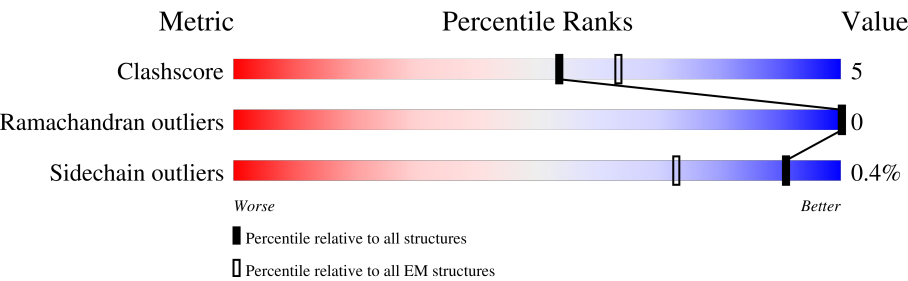
EMDB validation analysis : 0.0.1.dev43  
Mogul : 1.8.5 (274361), CSD as541be (2020)  
MolProbity : 4.02b-467  
buster-report : 1.1.7 (2018)  
Percentile statistics : 20191225.v01 (using entries in the PDB archive December 25th 2019)  
MapQ : 1.9.9  
Ideal geometry (proteins) : Engh & Huber (2001)  
Ideal geometry (DNA, RNA) : Parkinson et al. (1996)  
Validation Pipeline (wwPDB-VP) : 2.31.2

# 1 Overall quality at a glance i

The following experimental techniques were used to determine the structure:  
*ELECTRON MICROSCOPY*

The reported resolution of this entry is 3.90 Å.

Percentile scores (ranging between 0-100) for global validation metrics of the entry are shown in the following graphic. The table shows the number of entries on which the scores are based.



Metric	Whole archive (#Entries)	EM structures (#Entries)
Clashscore	158937	4297
Ramachandran outliers	154571	4023
Sidechain outliers	154315	3826

The table below summarises the geometric issues observed across the polymeric chains and their fit to the map. The red, orange, yellow and green segments of the bar indicate the fraction of residues that contain outliers for  $\geq 3$ , 2, 1 and 0 types of geometric quality criteria respectively. A grey segment represents the fraction of residues that are not modelled. The numeric value for each fraction is indicated below the corresponding segment, with a dot representing fractions  $\leq 5\%$ . The upper red bar (where present) indicates the fraction of residues that have poor fit to the EM map (all-atom inclusion  $< 40\%$ ). The numeric value is given above the bar.

Mol	Chain	Length	Quality of chain
1	B	618	<div><div>6%</div><div>41%</div><div>6%</div><div>53%</div></div>
2	C	721	<div><div>7%</div><div>73%</div><div>12%</div><div>15%</div></div>
3	D	462	<div><div>86%</div><div>10%</div><div>5%</div></div>
4	E	460	<div><div>75%</div><div>11%</div><div>13%</div></div>
5	F	257	<div><div>5%</div><div>93%</div></div>
6	A	488	<div><div>70%</div><div>12%</div><div>18%</div></div>
7	G	424	<div><div>7%</div><div>76%</div><div>12%</div><div>12%</div></div>
8	H	84	<div><div>6%</div><div>29%</div><div>12%</div><div>60%</div></div>

Continued on next page...

Continued from previous page...

Mol	Chain	Length	Quality of chain
9	I	84	<div><div><div></div><div></div><div></div><div></div><div></div></div><div>25%13%60%</div></div>

## 2 Entry composition [i](#)

There are 11 unique types of molecules in this entry. The entry contains 21717 atoms, of which 0 are hydrogens and 0 are deuteriums.

In the tables below, the AltConf column contains the number of residues with at least one atom in alternate conformation and the Trace column contains the number of residues modelled with at most 2 atoms.

- Molecule 1 is a protein called Origin recognition complex subunit 2.

Mol	Chain	Residues	Atoms					AltConf	Trace
1	B	290	Total	C	N	O	S	0	0
			2321	1488	386	434	13		

- Molecule 2 is a protein called AT22044p1.

Mol	Chain	Residues	Atoms					AltConf	Trace
2	C	612	Total	C	N	O	S	0	0
			4918	3155	860	874	29		

- Molecule 3 is a protein called Origin recognition complex subunit 4.

Mol	Chain	Residues	Atoms					AltConf	Trace
3	D	441	Total	C	N	O	S	0	0
			3549	2264	626	643	16		

There are 3 discrepancies between the modelled and reference sequences:

Chain	Residue	Modelled	Actual	Comment	Reference
D	-2	SER	-	expression tag	UNP Q9W102
D	-1	ASN	-	expression tag	UNP Q9W102
D	0	ALA	-	expression tag	UNP Q9W102

- Molecule 4 is a protein called Origin recognition complex subunit 5.

Mol	Chain	Residues	Atoms					AltConf	Trace
4	E	398	Total	C	N	O	S	0	0
			3161	2022	538	584	17		

- Molecule 5 is a protein called Origin recognition complex subunit 6.

Mol	Chain	Residues	Atoms					AltConf	Trace
5	F	17	Total	C	N	O	S	0	0
			143	92	25	25	1		

- Molecule 6 is a protein called Origin recognition complex subunit 1.

Mol	Chain	Residues	Atoms					AltConf	Trace
6	A	401	Total	C	N	O	S	0	0
			3129	1965	565	579	20		

There are 3 discrepancies between the modelled and reference sequences:

Chain	Residue	Modelled	Actual	Comment	Reference
A	437	SER	-	expression tag	UNP O16810
A	438	ASN	-	expression tag	UNP O16810
A	439	ALA	-	expression tag	UNP O16810

- Molecule 7 is a protein called Cell division control protein.

Mol	Chain	Residues	Atoms					AltConf	Trace
7	G	372	Total	C	N	O	S	0	0
			2974	1874	547	538	15		

There are 3 discrepancies between the modelled and reference sequences:

Chain	Residue	Modelled	Actual	Comment	Reference
G	239	SER	-	expression tag	UNP Q9VSM9
G	240	ASN	-	expression tag	UNP Q9VSM9
G	241	ALA	-	expression tag	UNP Q9VSM9

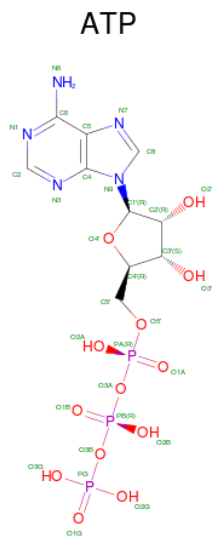
- Molecule 8 is a DNA chain called DNA (34-MER).

Mol	Chain	Residues	Atoms					AltConf	Trace
8	H	34	Total	C	N	O	P	0	0
			693	337	104	218	34		

- Molecule 9 is a DNA chain called DNA (34-MER).

Mol	Chain	Residues	Atoms					AltConf	Trace
9	I	34	Total	C	N	O	P	0	0
			701	335	142	190	34		

- Molecule 10 is ADENOSINE-5'-TRIPHOSPHATE (three-letter code: ATP) (formula: C<sub>10</sub>H<sub>16</sub>N<sub>5</sub>O<sub>13</sub>P<sub>3</sub>).



Mol	Chain	Residues	Atoms					AltConf
10	D	1	Total 31	C 10	N 5	O 13	P 3	0
10	E	1	Total 31	C 10	N 5	O 13	P 3	0
10	A	1	Total 31	C 10	N 5	O 13	P 3	0
10	G	1	Total 31	C 10	N 5	O 13	P 3	0

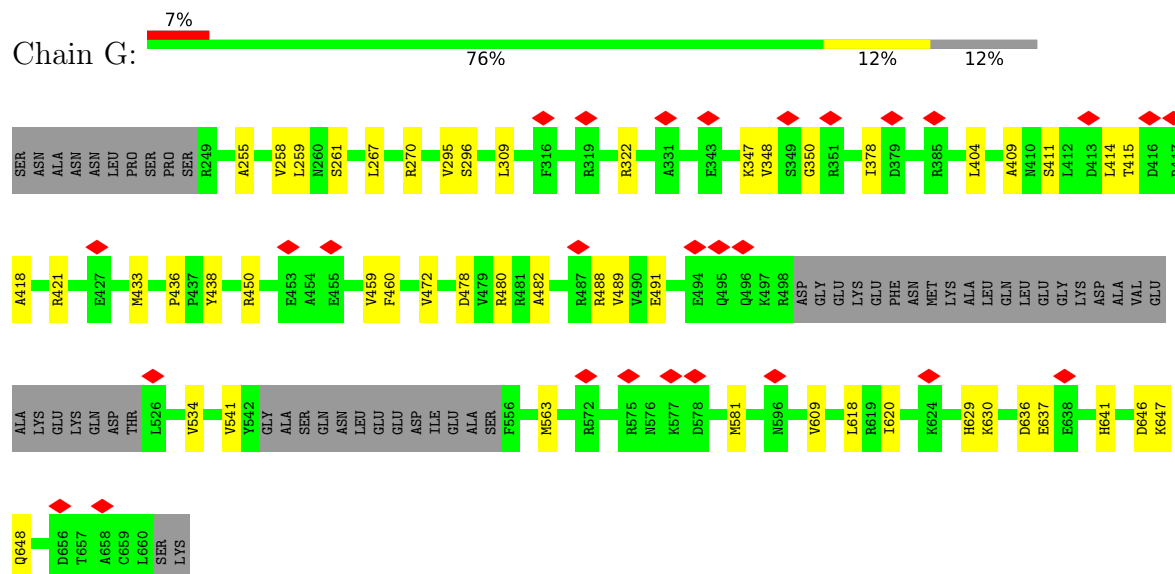
- Molecule 11 is MAGNESIUM ION (three-letter code: MG) (formula: Mg).

Mol	Chain	Residues	Atoms	AltConf
11	D	1	Total Mg 1 1	0
11	E	1	Total Mg 1 1	0
11	A	1	Total Mg 1 1	0
11	G	1	Total Mg 1 1	0

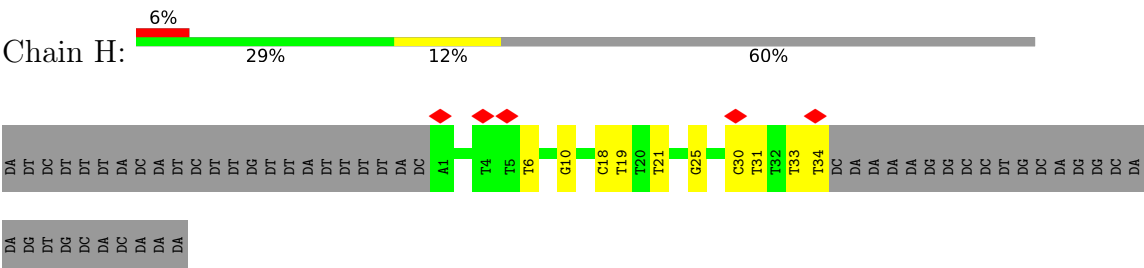




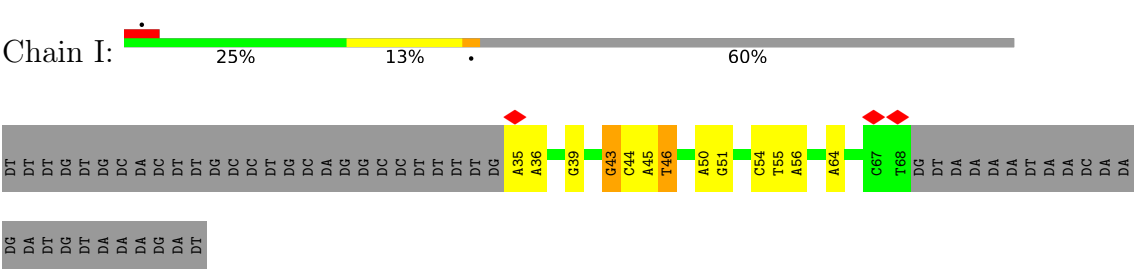




● Molecule 8: DNA (34-MER)



● Molecule 9: DNA (34-MER)



## 4 Experimental information

Property	Value	Source
EM reconstruction method	SINGLE PARTICLE	Depositor
Imposed symmetry	POINT, C1	Depositor
Number of particles used	44520	Depositor
Resolution determination method	FSC 0.143 CUT-OFF	Depositor
CTF correction method	PHASE FLIPPING AND AMPLITUDE CORRECTION	Depositor
Microscope	FEI TITAN KRIOS	Depositor
Voltage (kV)	300	Depositor
Electron dose ( $e^-/\text{\AA}^2$ )	40	Depositor
Minimum defocus (nm)	Not provided	
Maximum defocus (nm)	Not provided	
Magnification	Not provided	
Image detector	GATAN K2 SUMMIT (4k x 4k)	Depositor
Maximum map value	0.023	Depositor
Minimum map value	-0.007	Depositor
Average map value	0.000	Depositor
Map value standard deviation	0.001	Depositor
Recommended contour level	0.0055	Depositor
Map size (Å)	258.0, 258.0, 258.0	wwPDB
Map dimensions	300, 300, 300	wwPDB
Map angles (°)	90.0, 90.0, 90.0	wwPDB
Pixel spacing (Å)	0.86, 0.86, 0.86	Depositor

## 5 Model quality [i](#)

### 5.1 Standard geometry [i](#)

Bond lengths and bond angles in the following residue types are not validated in this section: MG, ATP

The Z score for a bond length (or angle) is the number of standard deviations the observed value is removed from the expected value. A bond length (or angle) with  $|Z| > 5$  is considered an outlier worth inspection. RMSZ is the root-mean-square of all Z scores of the bond lengths (or angles).

Mol	Chain	Bond lengths		Bond angles	
		RMSZ	# Z  >5	RMSZ	# Z  >5
1	B	0.30	0/2372	0.51	0/3209
2	C	0.30	0/5012	0.54	0/6773
3	D	0.30	0/3616	0.50	0/4877
4	E	0.32	0/3208	0.56	1/4332 (0.0%)
5	F	0.23	0/145	0.35	0/192
6	A	0.32	0/3174	0.54	1/4290 (0.0%)
7	G	0.30	0/3012	0.53	1/4060 (0.0%)
8	H	0.60	0/771	1.17	0/1189
9	I	0.76	3/791 (0.4%)	0.97	0/1217
All	All	0.35	3/22101 (0.0%)	0.59	3/30139 (0.0%)

All (3) bond length outliers are listed below:

Mol	Chain	Res	Type	Atoms	Z	Observed(Å)	Ideal(Å)
9	I	46	DT	O3'-P	-8.12	1.51	1.61
9	I	46	DT	C1'-N1	5.73	1.56	1.49
9	I	43	DG	C1'-N9	-5.42	1.39	1.47

All (3) bond angle outliers are listed below:

Mol	Chain	Res	Type	Atoms	Z	Observed(°)	Ideal(°)
6	A	532	LEU	CA-CB-CG	6.03	129.16	115.30
7	G	404	LEU	CA-CB-CG	6.01	129.13	115.30
4	E	153	LEU	CA-CB-CG	5.52	127.99	115.30

There are no chirality outliers.

There are no planarity outliers.

## 5.2 Too-close contacts ⓘ

In the following table, the Non-H and H(model) columns list the number of non-hydrogen atoms and hydrogen atoms in the chain respectively. The H(added) column lists the number of hydrogen atoms added and optimized by MolProbity. The Clashes column lists the number of clashes within the asymmetric unit, whereas Symm-Clashes lists symmetry-related clashes.

Mol	Chain	Non-H	H(model)	H(added)	Clashes	Symm-Clashes
1	B	2321	0	2288	21	0
2	C	4918	0	5012	68	0
3	D	3549	0	3586	30	0
4	E	3161	0	3226	39	0
5	F	143	0	145	16	0
6	A	3129	0	3237	36	0
7	G	2974	0	3114	30	0
8	H	693	0	395	20	0
9	I	701	0	381	33	0
10	A	31	0	12	0	0
10	D	31	0	12	0	0
10	E	31	0	12	0	0
10	G	31	0	12	3	0
11	A	1	0	0	0	0
11	D	1	0	0	0	0
11	E	1	0	0	0	0
11	G	1	0	0	0	0
All	All	21717	0	21432	226	0

The all-atom clashscore is defined as the number of clashes found per 1000 atoms (including hydrogen atoms). The all-atom clashscore for this structure is 5.

The worst 5 of 226 close contacts within the same asymmetric unit are listed below, sorted by their clash magnitude.

Atom-1	Atom-2	Interatomic distance (Å)	Clash overlap (Å)
8:H:33:DT:N3	9:I:36:DA:N1	1.90	1.20
8:H:18:DC:O2	9:I:51:DG:N2	1.80	1.15
4:E:381:SER:HB3	4:E:431:ARG:HH11	0.98	1.12
2:C:375:ILE:HD11	5:F:236:ALA:HB2	1.35	1.05
8:H:18:DC:N3	9:I:51:DG:N1	2.07	1.02

There are no symmetry-related clashes.

## 5.3 Torsion angles

### 5.3.1 Protein backbone

In the following table, the Percentiles column shows the percent Ramachandran outliers of the chain as a percentile score with respect to all PDB entries followed by that with respect to all EM entries.

The Analysed column shows the number of residues for which the backbone conformation was analysed, and the total number of residues.

Mol	Chain	Analysed	Favoured	Allowed	Outliers	Percentiles	
1	B	282/618 (46%)	274 (97%)	8 (3%)	0	100	100
2	C	596/721 (83%)	565 (95%)	31 (5%)	0	100	100
3	D	435/462 (94%)	414 (95%)	21 (5%)	0	100	100
4	E	388/460 (84%)	371 (96%)	17 (4%)	0	100	100
5	F	15/257 (6%)	15 (100%)	0	0	100	100
6	A	399/488 (82%)	385 (96%)	14 (4%)	0	100	100
7	G	366/424 (86%)	355 (97%)	11 (3%)	0	100	100
All	All	2481/3430 (72%)	2379 (96%)	102 (4%)	0	100	100

There are no Ramachandran outliers to report.

### 5.3.2 Protein sidechains

In the following table, the Percentiles column shows the percent sidechain outliers of the chain as a percentile score with respect to all PDB entries followed by that with respect to all EM entries.

The Analysed column shows the number of residues for which the sidechain conformation was analysed, and the total number of residues.

Mol	Chain	Analysed	Rotameric	Outliers	Percentiles	
1	B	260/545 (48%)	259 (100%)	1 (0%)	91	94
2	C	539/636 (85%)	538 (100%)	1 (0%)	93	96
3	D	389/400 (97%)	387 (100%)	2 (0%)	88	93
4	E	347/402 (86%)	346 (100%)	1 (0%)	92	95
5	F	13/227 (6%)	13 (100%)	0	100	100
6	A	341/422 (81%)	341 (100%)	0	100	100
7	G	331/374 (88%)	328 (99%)	3 (1%)	78	87

*Continued on next page...*

*Continued from previous page...*

Mol	Chain	Analysed	Rotameric	Outliers	Percentiles	
All	All	2220/3006 (74%)	2212 (100%)	8 (0%)	91	94

5 of 8 residues with a non-rotameric sidechain are listed below:

Mol	Chain	Res	Type
7	G	415	THR
7	G	347	LYS
4	E	217	CYS
3	D	209	LEU
7	G	322	ARG

Sometimes sidechains can be flipped to improve hydrogen bonding and reduce clashes. 5 of 14 such sidechains are listed below:

Mol	Chain	Res	Type
4	E	127	ASN
4	E	414	ASN
7	G	386	GLN
6	A	828	ASN
6	A	838	GLN

### 5.3.3 RNA [i](#)

There are no RNA molecules in this entry.

## 5.4 Non-standard residues in protein, DNA, RNA chains [i](#)

There are no non-standard protein/DNA/RNA residues in this entry.

## 5.5 Carbohydrates [i](#)

There are no monosaccharides in this entry.

## 5.6 Ligand geometry [i](#)

Of 8 ligands modelled in this entry, 4 are monoatomic - leaving 4 for Mogul analysis.

In the following table, the Counts columns list the number of bonds (or angles) for which Mogul statistics could be retrieved, the number of bonds (or angles) that are observed in the model and the number of bonds (or angles) that are defined in the Chemical Component Dictionary. The

Link column lists molecule types, if any, to which the group is linked. The Z score for a bond length (or angle) is the number of standard deviations the observed value is removed from the expected value. A bond length (or angle) with  $|Z| > 2$  is considered an outlier worth inspection. RMSZ is the root-mean-square of all Z scores of the bond lengths (or angles).

Mol	Type	Chain	Res	Link	Bond lengths			Bond angles		
					Counts	RMSZ	# Z  > 2	Counts	RMSZ	# Z  > 2
10	ATP	E	901	11	26,33,33	0.90	1 (3%)	31,52,52	1.54	5 (16%)
10	ATP	D	901	11	26,33,33	0.91	1 (3%)	31,52,52	1.62	5 (16%)
10	ATP	G	901	11	26,33,33	0.91	1 (3%)	31,52,52	1.52	5 (16%)
10	ATP	A	1001	11	26,33,33	0.91	1 (3%)	31,52,52	1.56	6 (19%)

In the following table, the Chirals column lists the number of chiral outliers, the number of chiral centers analysed, the number of these observed in the model and the number defined in the Chemical Component Dictionary. Similar counts are reported in the Torsion and Rings columns. '-' means no outliers of that kind were identified.

Mol	Type	Chain	Res	Link	Chirals	Torsions	Rings
10	ATP	E	901	11	-	6/18/38/38	0/3/3/3
10	ATP	D	901	11	-	0/18/38/38	0/3/3/3
10	ATP	G	901	11	-	5/18/38/38	0/3/3/3
10	ATP	A	1001	11	-	1/18/38/38	0/3/3/3

All (4) bond length outliers are listed below:

Mol	Chain	Res	Type	Atoms	Z	Observed(Å)	Ideal(Å)
10	D	901	ATP	C5-C4	2.34	1.47	1.40
10	E	901	ATP	C5-C4	2.24	1.46	1.40
10	A	1001	ATP	C5-C4	2.23	1.46	1.40
10	G	901	ATP	C5-C4	2.17	1.46	1.40

The worst 5 of 21 bond angle outliers are listed below:

Mol	Chain	Res	Type	Atoms	Z	Observed(°)	Ideal(°)
10	D	901	ATP	PB-O3B-PG	-4.12	118.67	132.83
10	D	901	ATP	PA-O3A-PB	-3.83	119.69	132.83
10	E	901	ATP	PA-O3A-PB	-3.57	120.56	132.83
10	A	1001	ATP	C3'-C2'-C1'	3.54	106.31	100.98
10	E	901	ATP	PB-O3B-PG	-3.42	121.08	132.83

There are no chirality outliers.

5 of 12 torsion outliers are listed below:



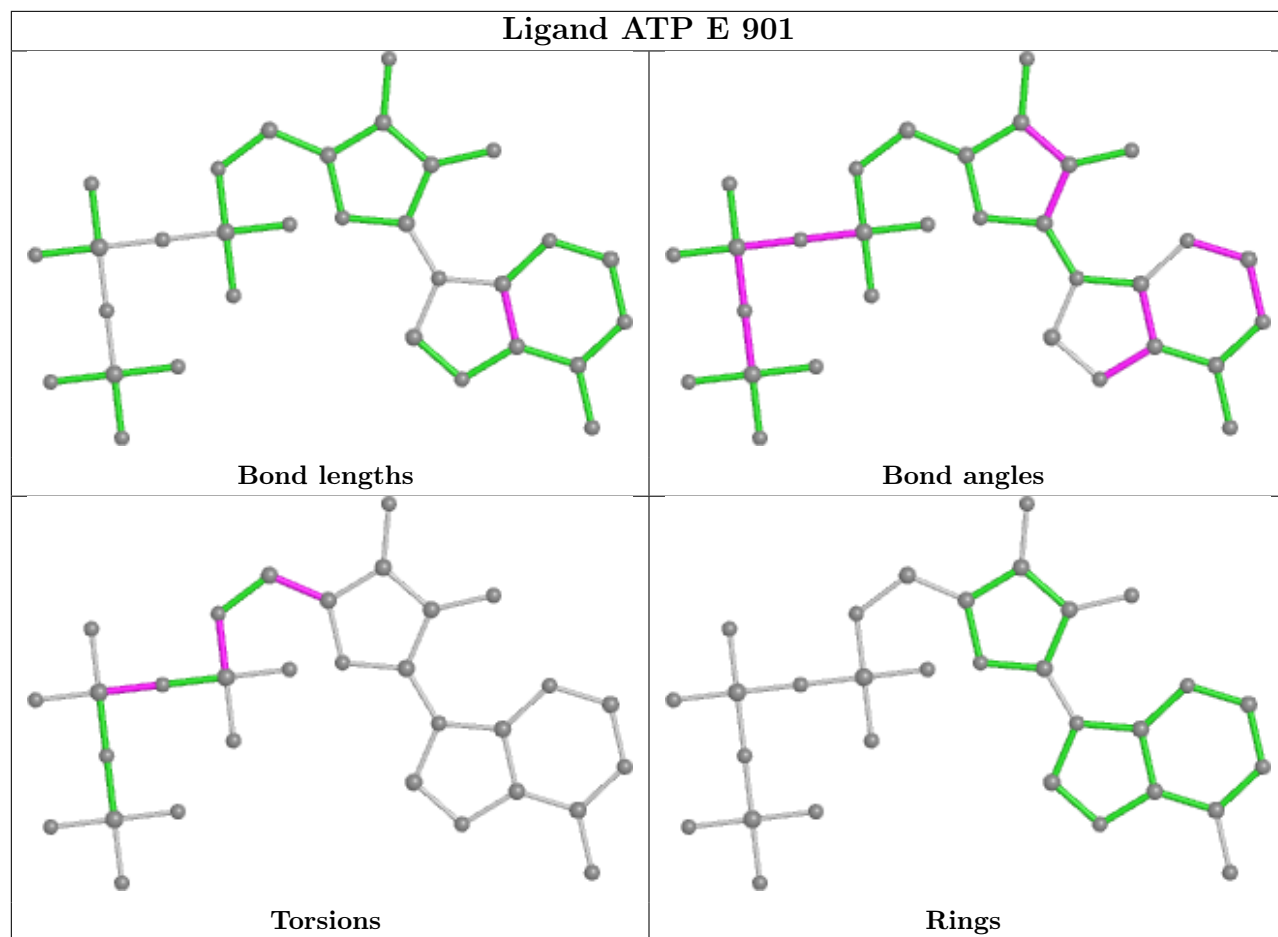
Mol	Chain	Res	Type	Atoms
10	E	901	ATP	C5'-O5'-PA-O2A
10	E	901	ATP	C5'-O5'-PA-O3A
10	E	901	ATP	O4'-C4'-C5'-O5'
10	G	901	ATP	C5'-O5'-PA-O1A
10	E	901	ATP	C3'-C4'-C5'-O5'

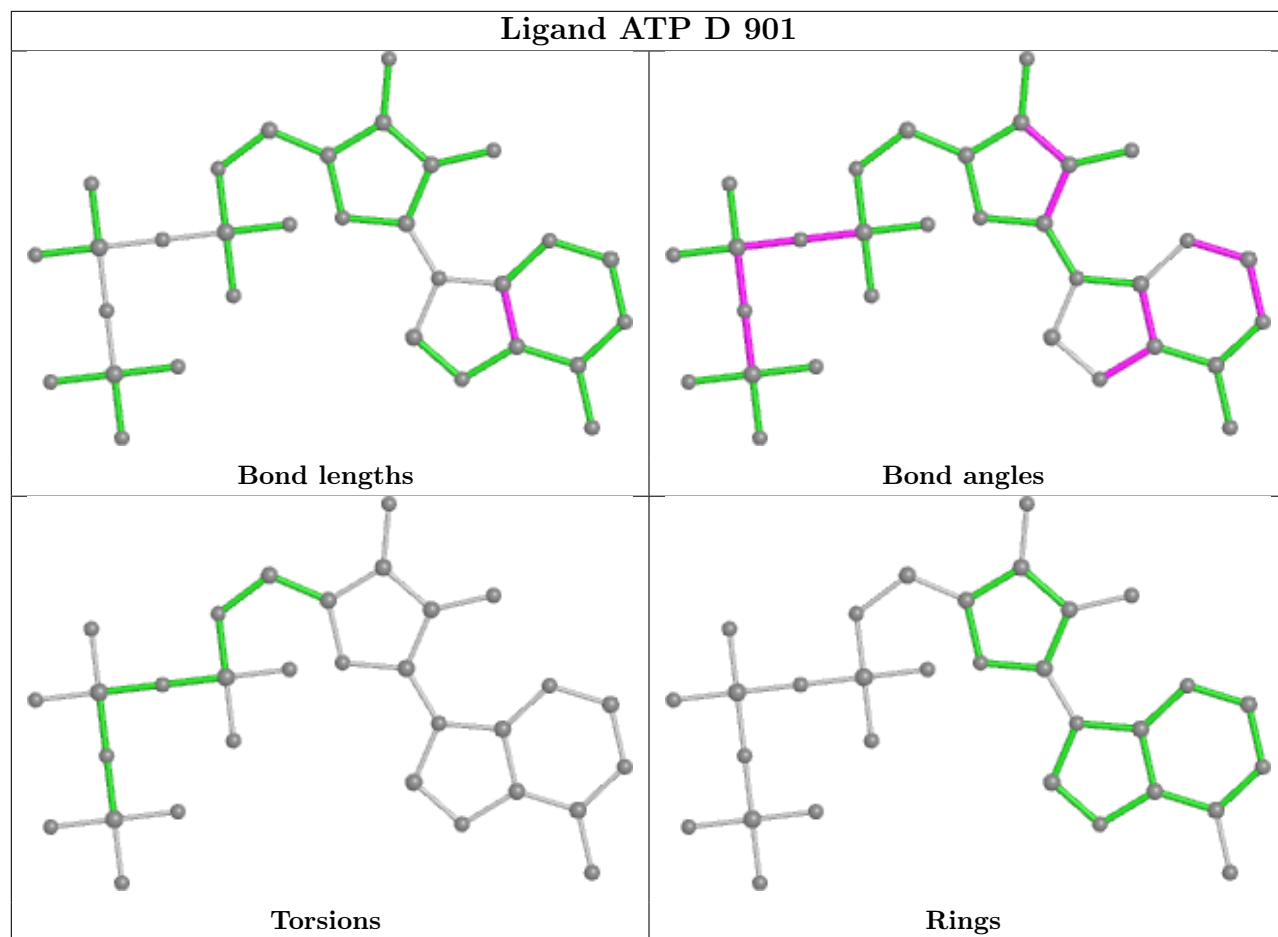
There are no ring outliers.

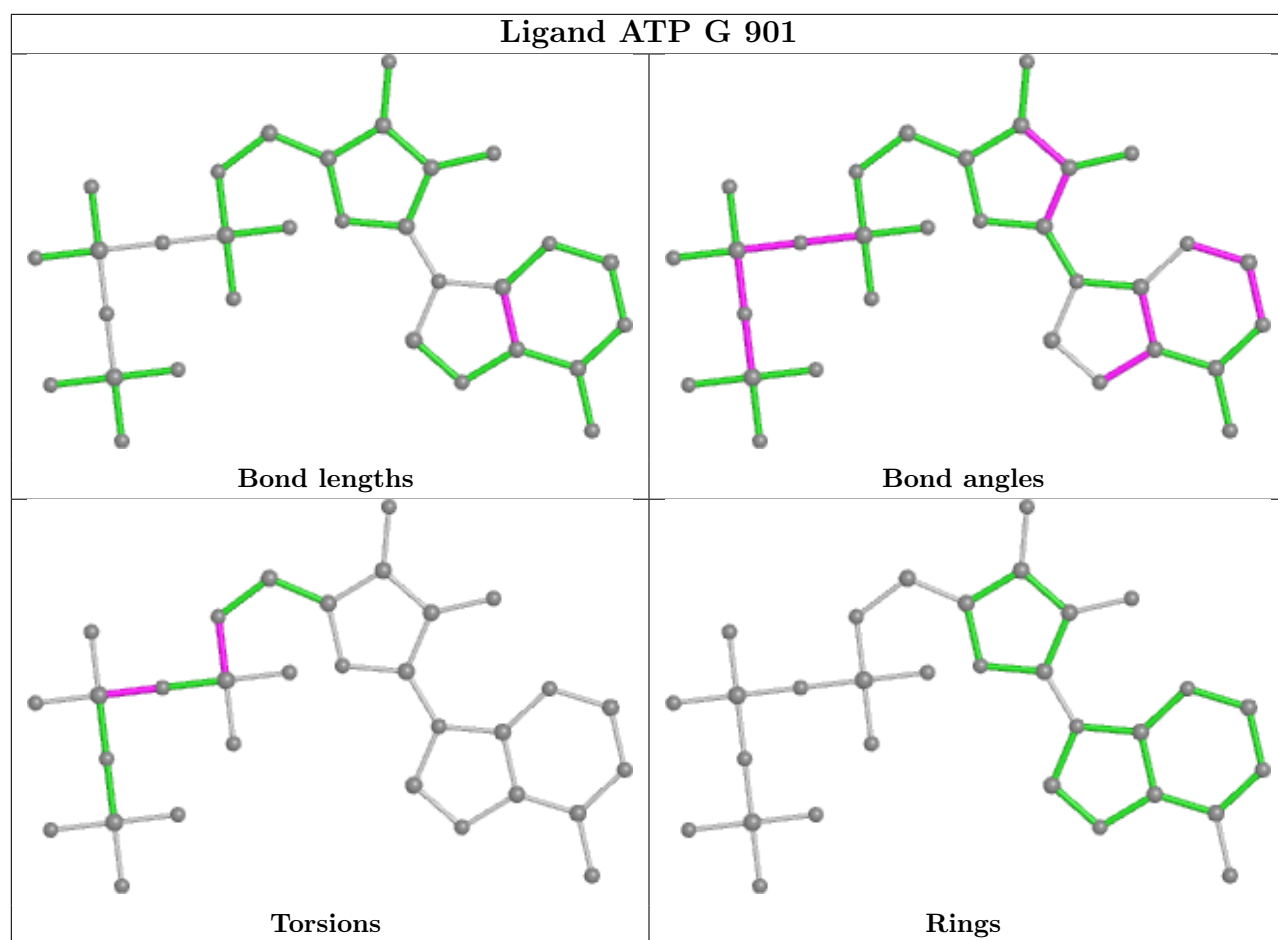
1 monomer is involved in 3 short contacts:

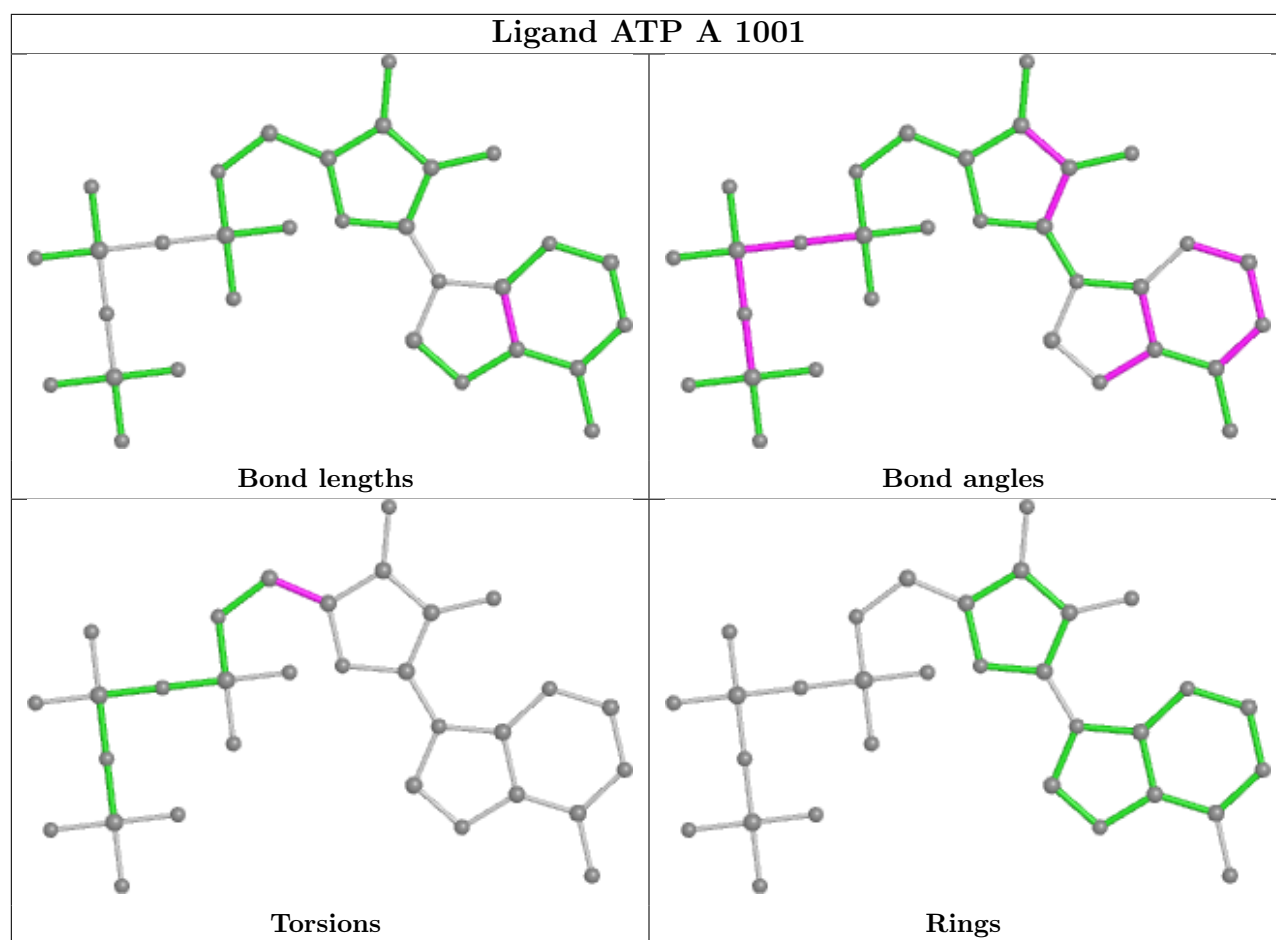
Mol	Chain	Res	Type	Clashes	Symm-Clashes
10	G	901	ATP	3	0

The following is a two-dimensional graphical depiction of Mogul quality analysis of bond lengths, bond angles, torsion angles, and ring geometry for all instances of the Ligand of Interest. In addition, ligands with molecular weight > 250 and outliers as shown on the validation Tables will also be included. For torsion angles, if less than 5% of the Mogul distribution of torsion angles is within 10 degrees of the torsion angle in question, then that torsion angle is considered an outlier. Any bond that is central to one or more torsion angles identified as an outlier by Mogul will be highlighted in the graph. For rings, the root-mean-square deviation (RMSD) between the ring in question and similar rings identified by Mogul is calculated over all ring torsion angles. If the average RMSD is greater than 60 degrees and the minimal RMSD between the ring in question and any Mogul-identified rings is also greater than 60 degrees, then that ring is considered an outlier. The outliers are highlighted in purple. The color gray indicates Mogul did not find sufficient equivalents in the CSD to analyse the geometry.









## 5.7 Other polymers [i](#)

There are no such residues in this entry.

## 5.8 Polymer linkage issues [i](#)

There are no chain breaks in this entry.

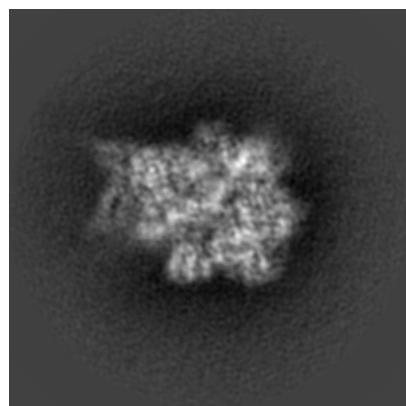
## 6 Map visualisation [i](#)

This section contains visualisations of the EMDB entry EMD-22329. These allow visual inspection of the internal detail of the map and identification of artifacts.

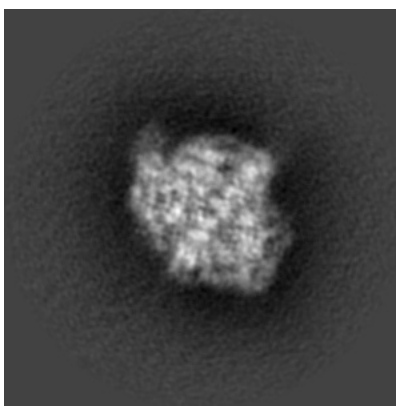
Images derived from a raw map, generated by summing the deposited half-maps, are presented below the corresponding image components of the primary map to allow further visual inspection and comparison with those of the primary map.

### 6.1 Orthogonal projections [i](#)

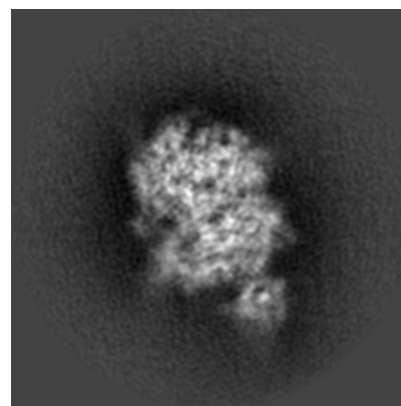
#### 6.1.1 Primary map



X

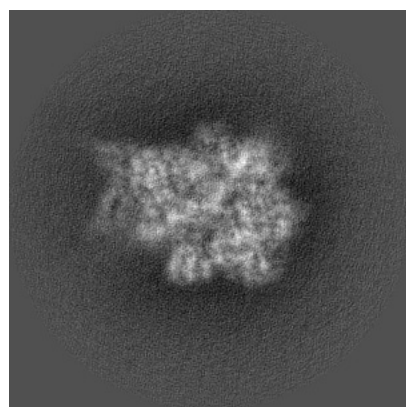


Y

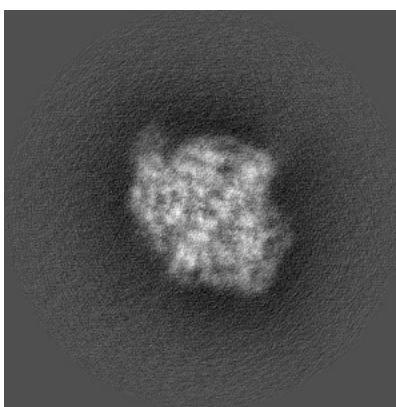


Z

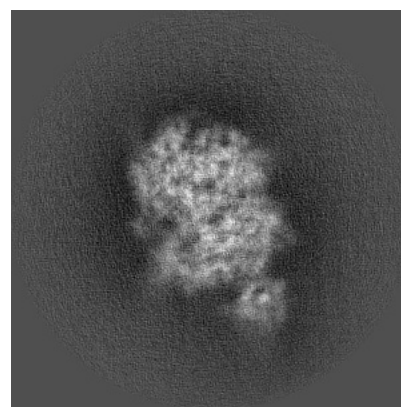
#### 6.1.2 Raw map



X



Y

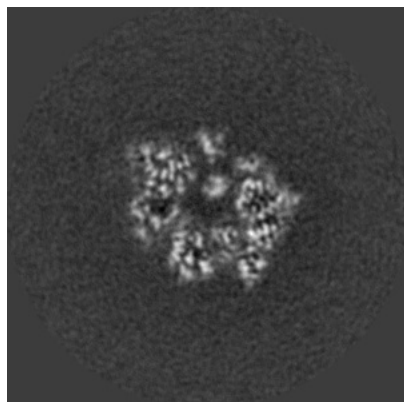


Z

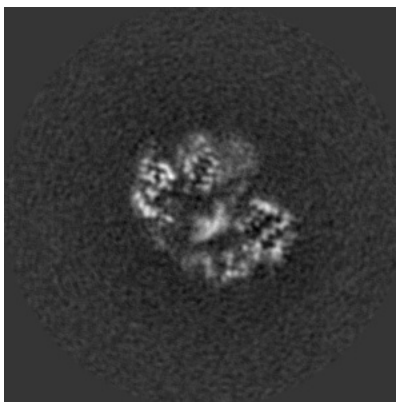
The images above show the map projected in three orthogonal directions.

## 6.2 Central slices [i](#)

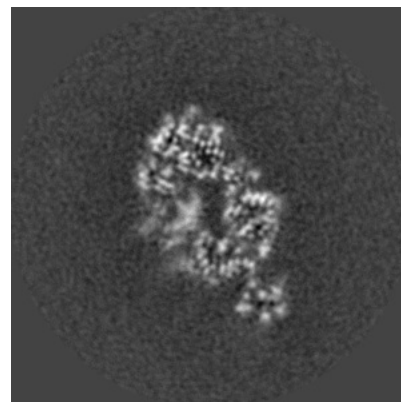
### 6.2.1 Primary map



X Index: 150

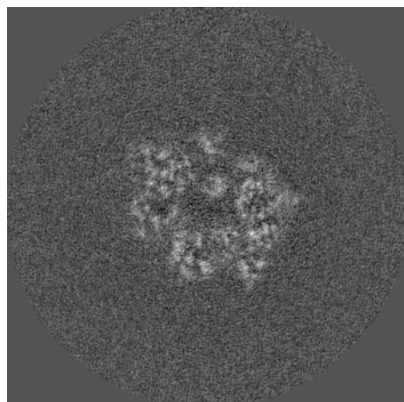


Y Index: 150

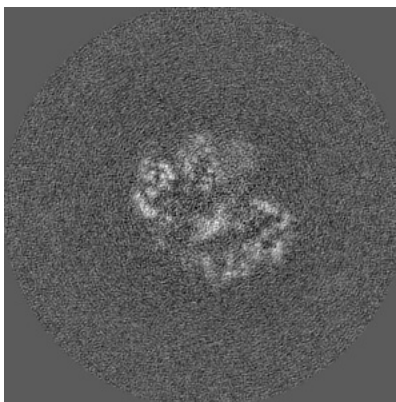


Z Index: 150

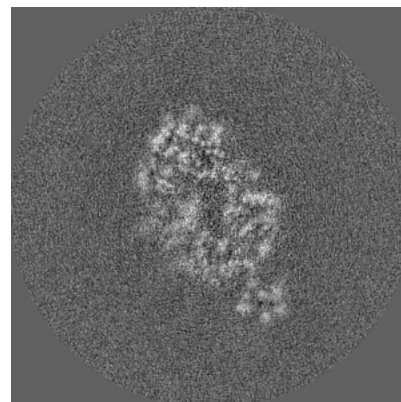
### 6.2.2 Raw map



X Index: 150



Y Index: 150



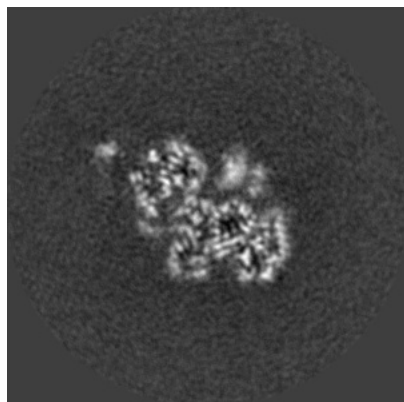
Z Index: 150

The images above show central slices of the map in three orthogonal directions.

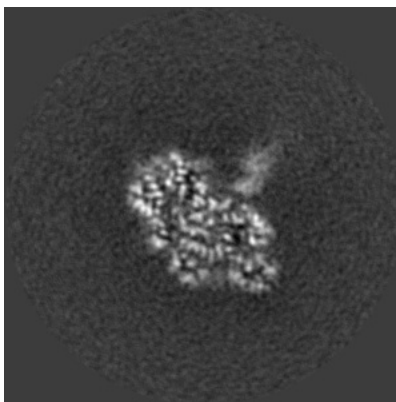


## 6.3 Largest variance slices [i](#)

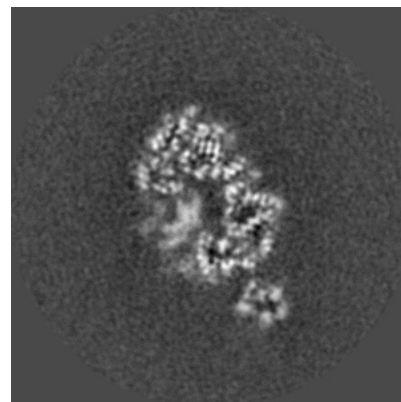
### 6.3.1 Primary map



X Index: 165

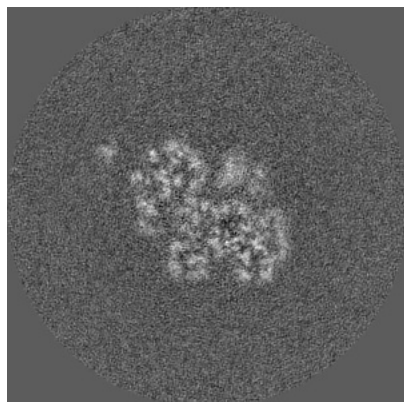


Y Index: 177

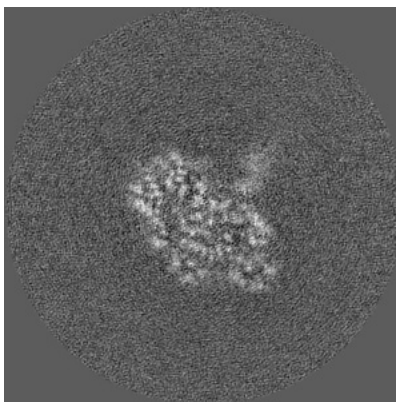


Z Index: 148

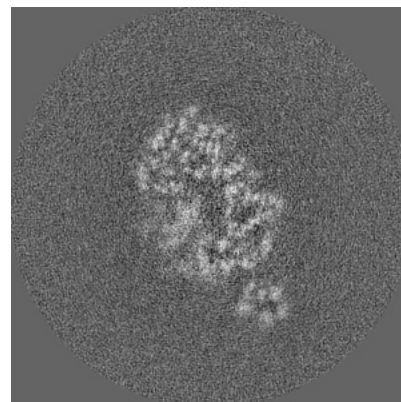
### 6.3.2 Raw map



X Index: 164



Y Index: 177



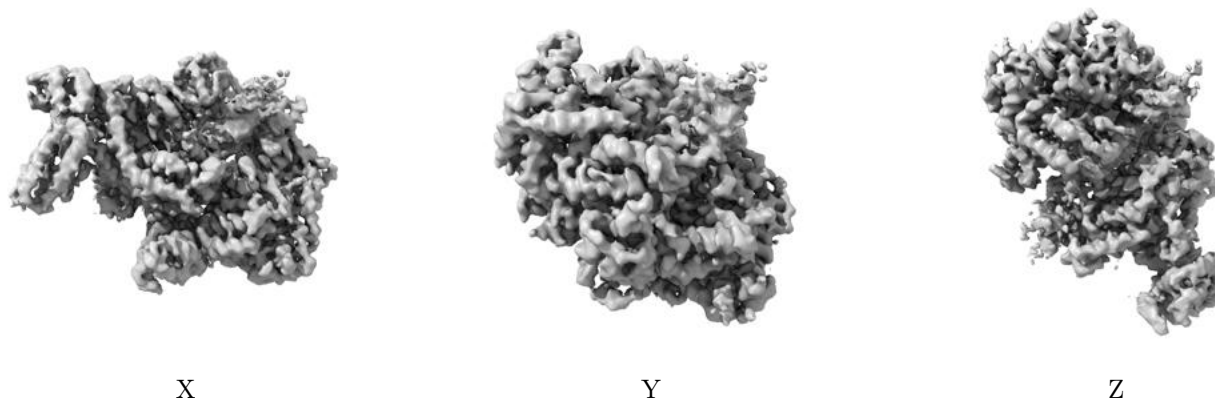
Z Index: 148

The images above show the largest variance slices of the map in three orthogonal directions.



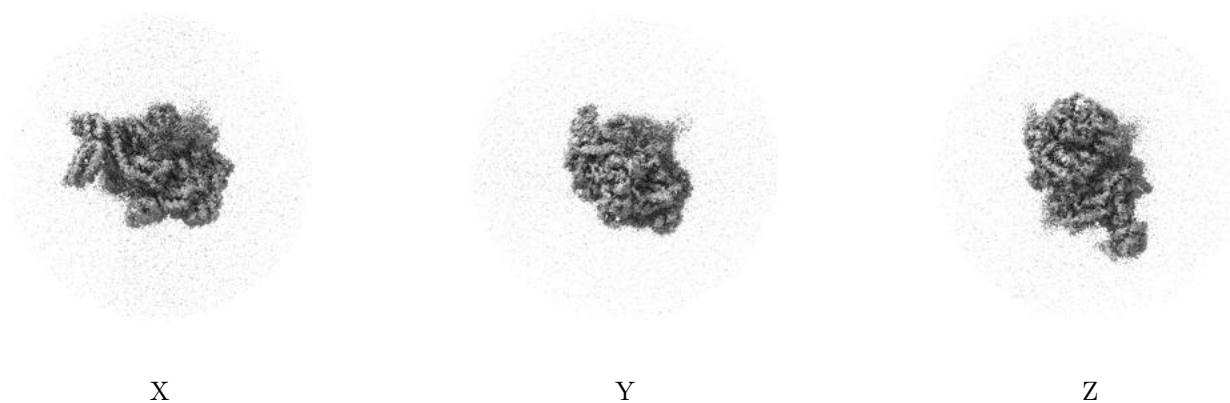
## 6.4 Orthogonal surface views [i](#)

### 6.4.1 Primary map



The images above show the 3D surface view of the map at the recommended contour level 0.0055. These images, in conjunction with the slice images, may facilitate assessment of whether an appropriate contour level has been provided.

### 6.4.2 Raw map



These images show the 3D surface of the raw map. The raw map's contour level was selected so that its surface encloses the same volume as the primary map does at its recommended contour level.

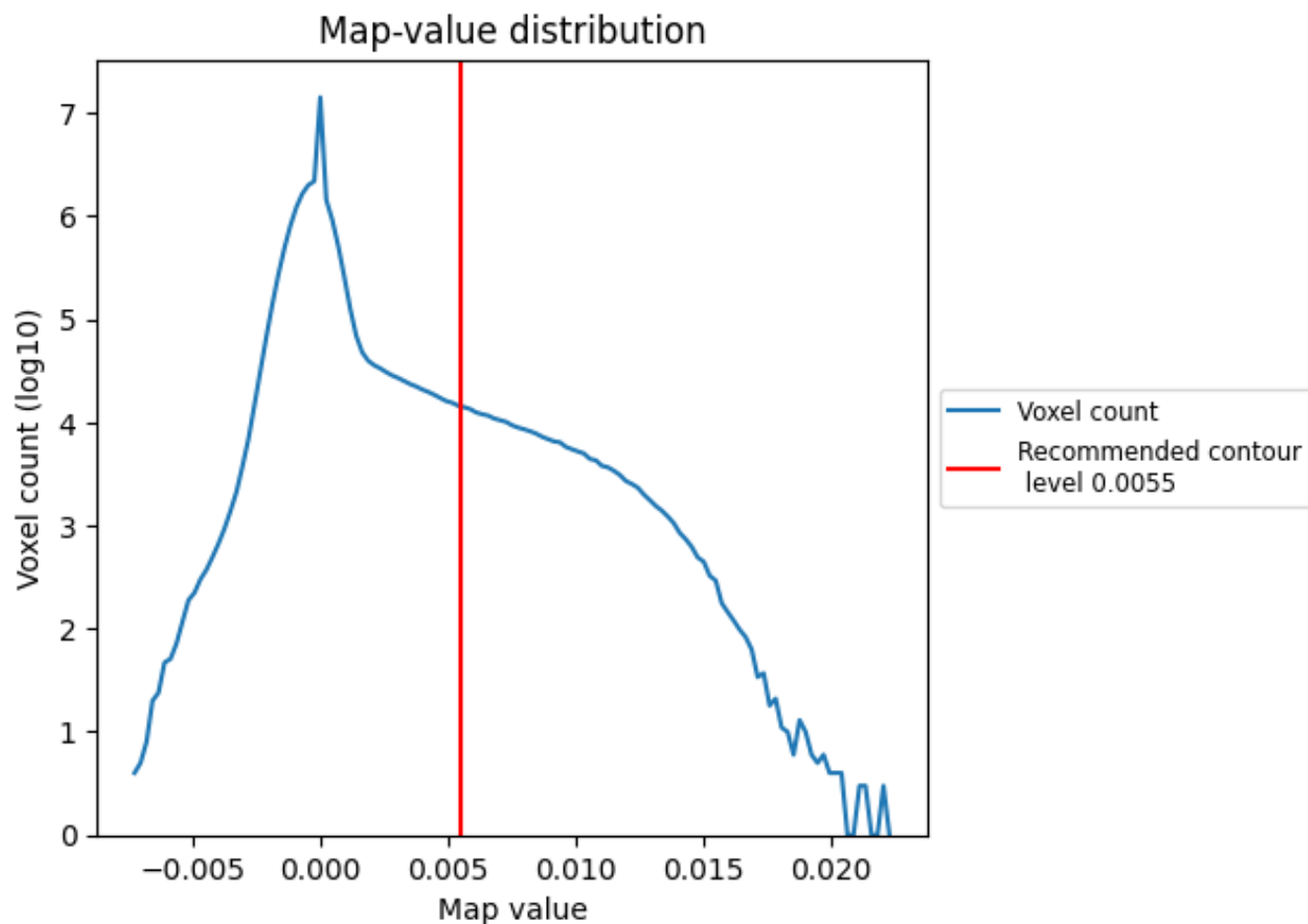
## 6.5 Mask visualisation [i](#)

This section was not generated. No masks/segmentation were deposited.

## 7 Map analysis [i](#)

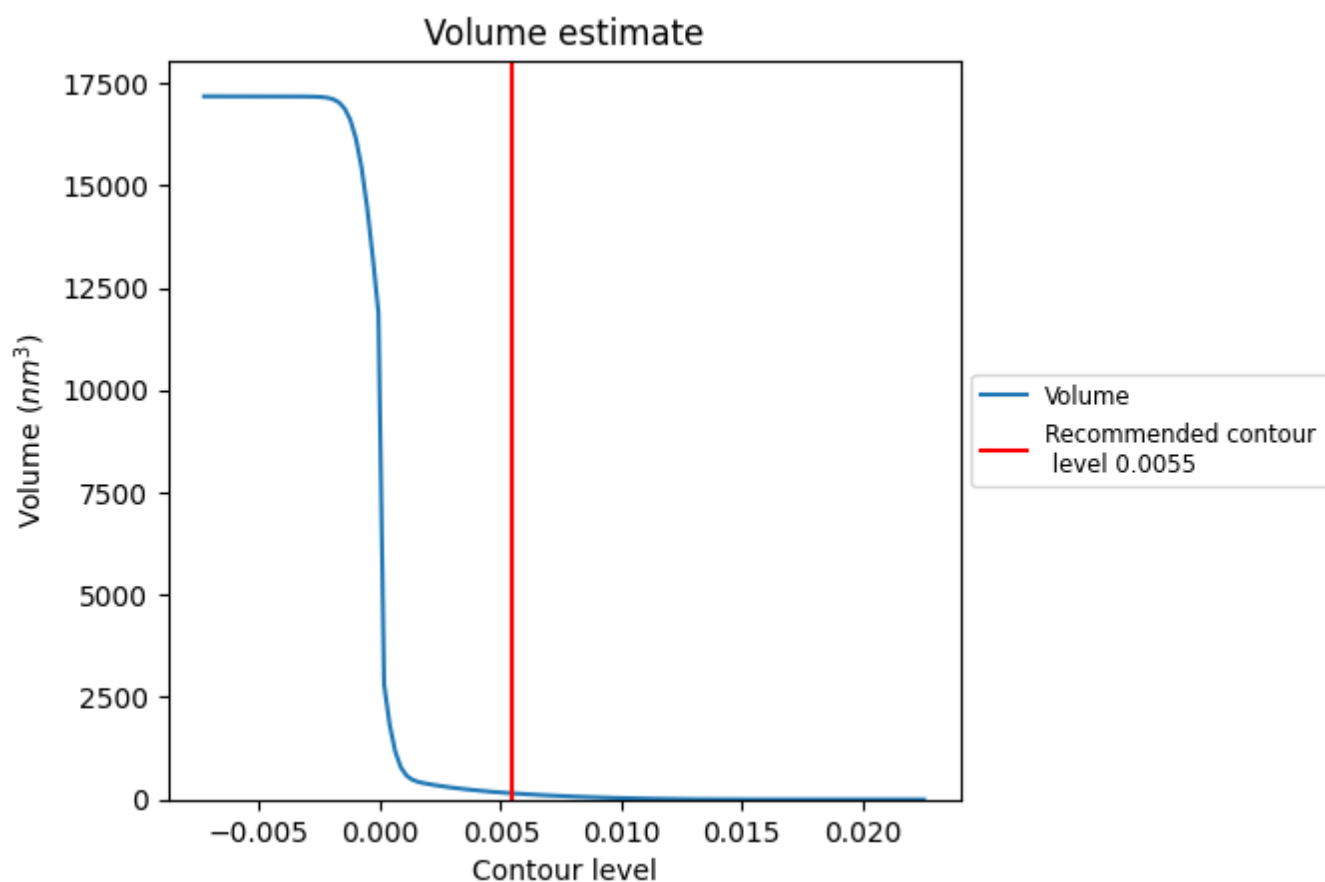
This section contains the results of statistical analysis of the map.

### 7.1 Map-value distribution [i](#)



The map-value distribution is plotted in 128 intervals along the x-axis. The y-axis is logarithmic. A spike in this graph at zero usually indicates that the volume has been masked.

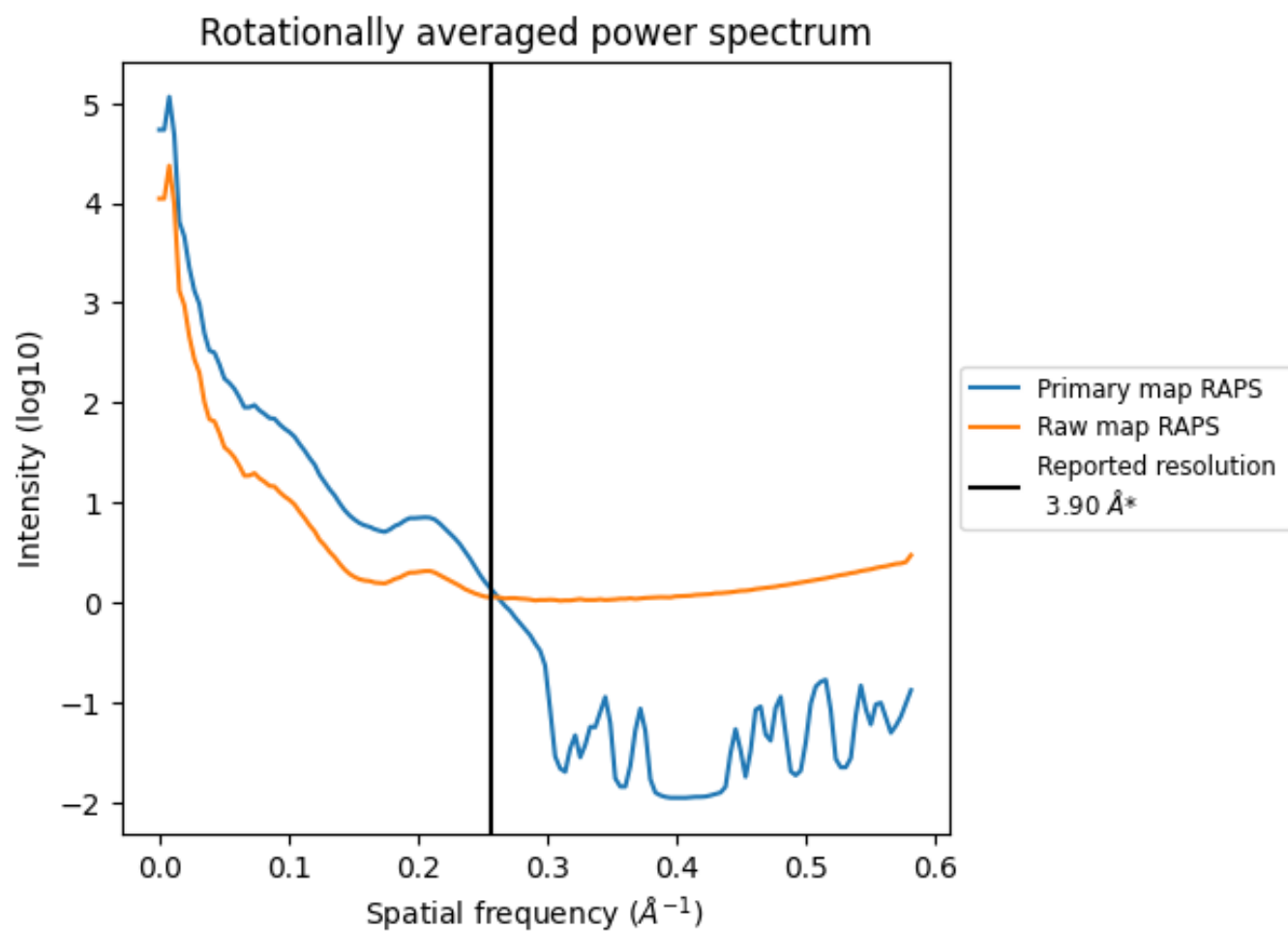
## 7.2 Volume estimate [i](#)



The volume at the recommended contour level is 152 nm<sup>3</sup>; this corresponds to an approximate mass of 137 kDa.

The volume estimate graph shows how the enclosed volume varies with the contour level. The recommended contour level is shown as a vertical line and the intersection between the line and the curve gives the volume of the enclosed surface at the given level.

### 7.3 Rotationally averaged power spectrum ⓘ

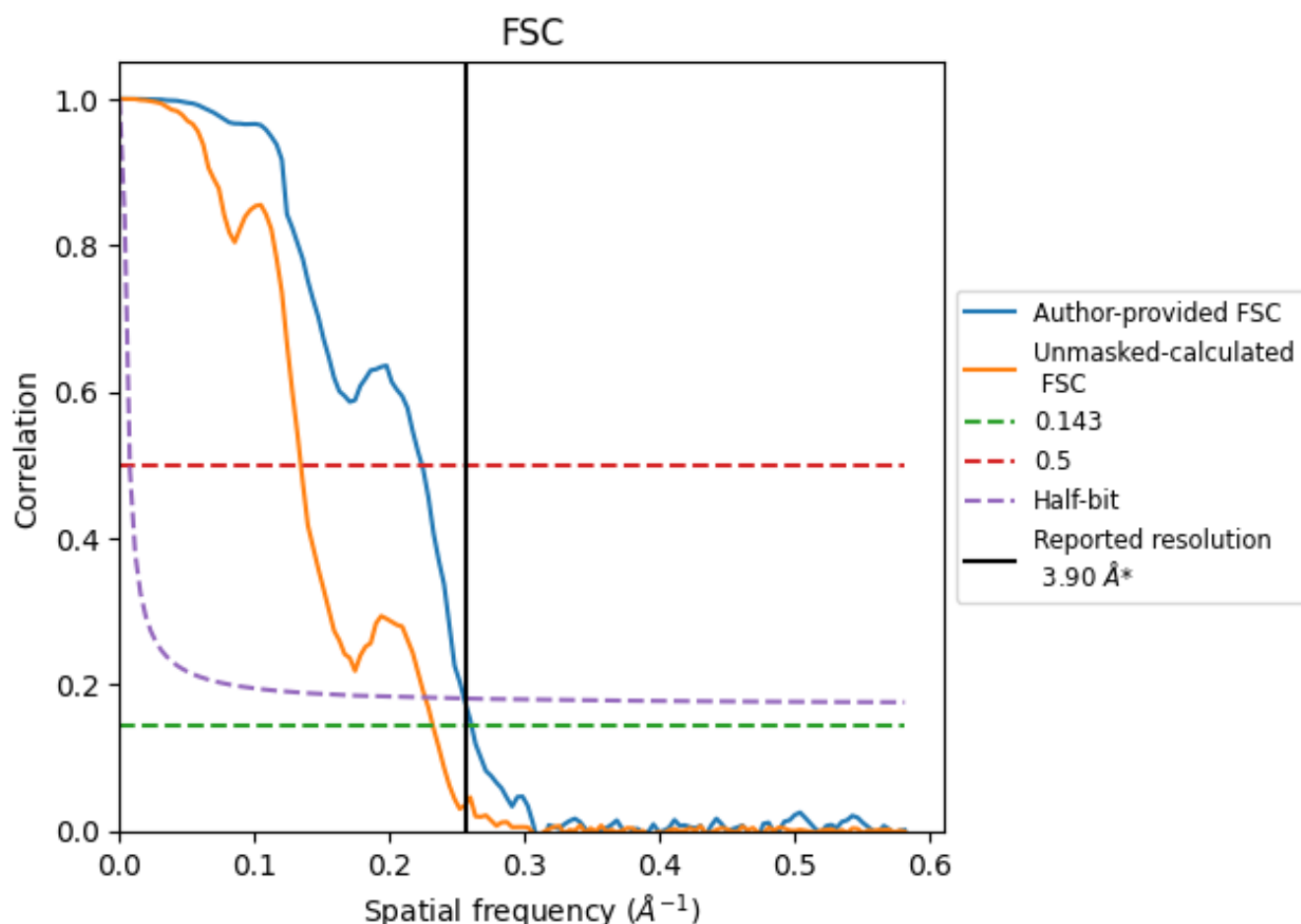


\*Reported resolution corresponds to spatial frequency of 0.256 Å<sup>-1</sup>

## 8 Fourier-Shell correlation [i](#)

Fourier-Shell Correlation (FSC) is the most commonly used method to estimate the resolution of single-particle and subtomogram-averaged maps. The shape of the curve depends on the imposed symmetry, mask and whether or not the two 3D reconstructions used were processed from a common reference. The reported resolution is shown as a black line. A curve is displayed for the half-bit criterion in addition to lines showing the 0.143 gold standard cut-off and 0.5 cut-off.

### 8.1 FSC [i](#)



\*Reported resolution corresponds to spatial frequency of 0.256  $\text{\AA}^{-1}$

## 8.2 Resolution estimates [i](#)

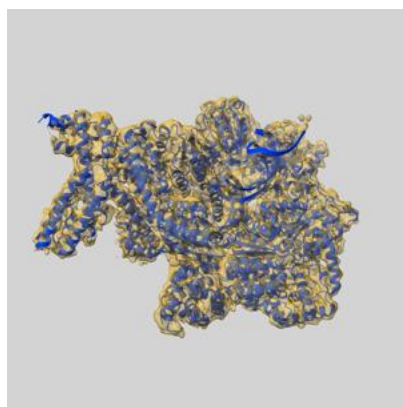
Resolution estimate (Å)	Estimation criterion (FSC cut-off)		
	0.143	0.5	Half-bit
Reported by author	3.90	-	-
Author-provided FSC curve	3.84	4.47	3.92
Unmasked-calculated*	4.31	7.45	4.42

\*Resolution estimate based on FSC curve calculated by comparison of deposited half-maps. The value from deposited half-maps intersecting FSC 0.143 CUT-OFF 4.31 differs from the reported value 3.9 by more than 10 %

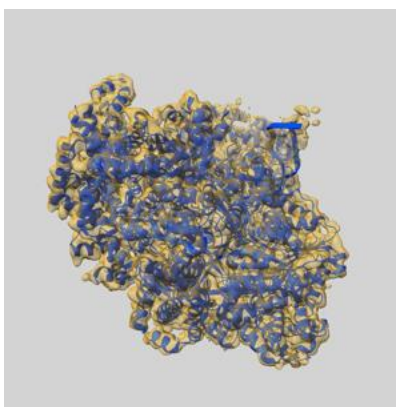
## 9 Map-model fit [i](#)

This section contains information regarding the fit between EMDB map EMD-22329 and PDB model 7JGR. Per-residue inclusion information can be found in section [3](#) on page [7](#).

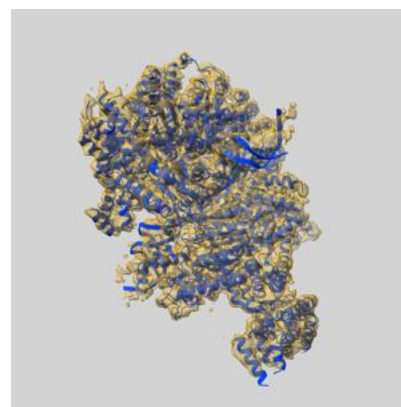
### 9.1 Map-model overlay [i](#)



X



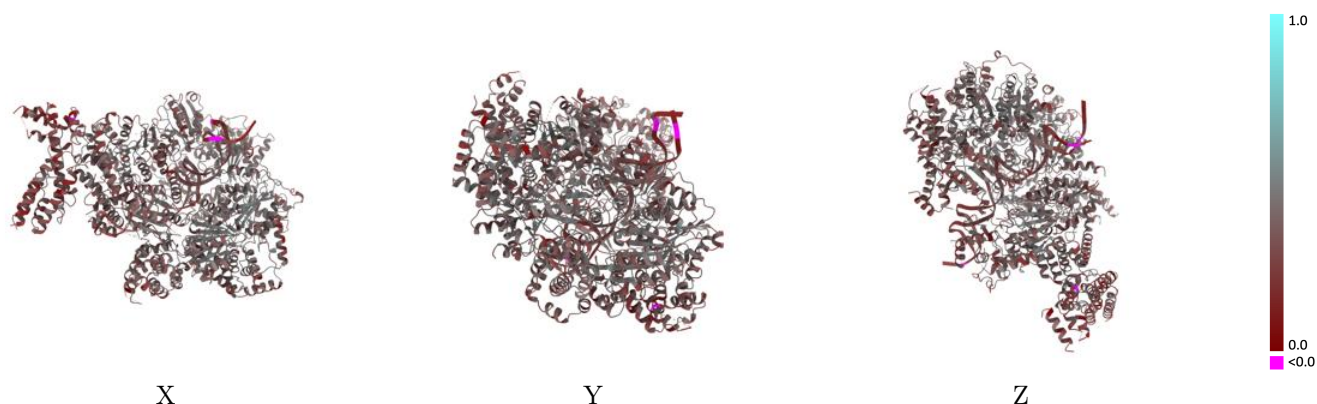
Y



Z

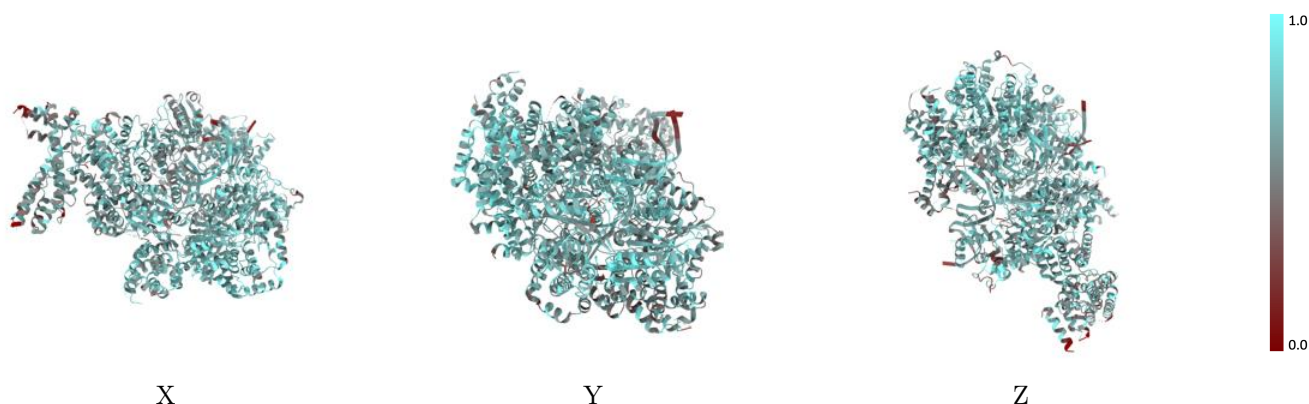
The images above show the 3D surface view of the map at the recommended contour level 0.0055 at 50% transparency in yellow overlaid with a ribbon representation of the model coloured in blue. These images allow for the visual assessment of the quality of fit between the atomic model and the map.

## 9.2 Q-score mapped to coordinate model [i](#)



The images above show the model with each residue coloured according to its Q-score. This shows their resolvability in the map with higher Q-score values reflecting better resolvability. Please note: Q-score is calculating the resolvability of atoms, and thus high values are only expected at resolutions at which atoms can be resolved. Low Q-score values may therefore be expected for many entries.

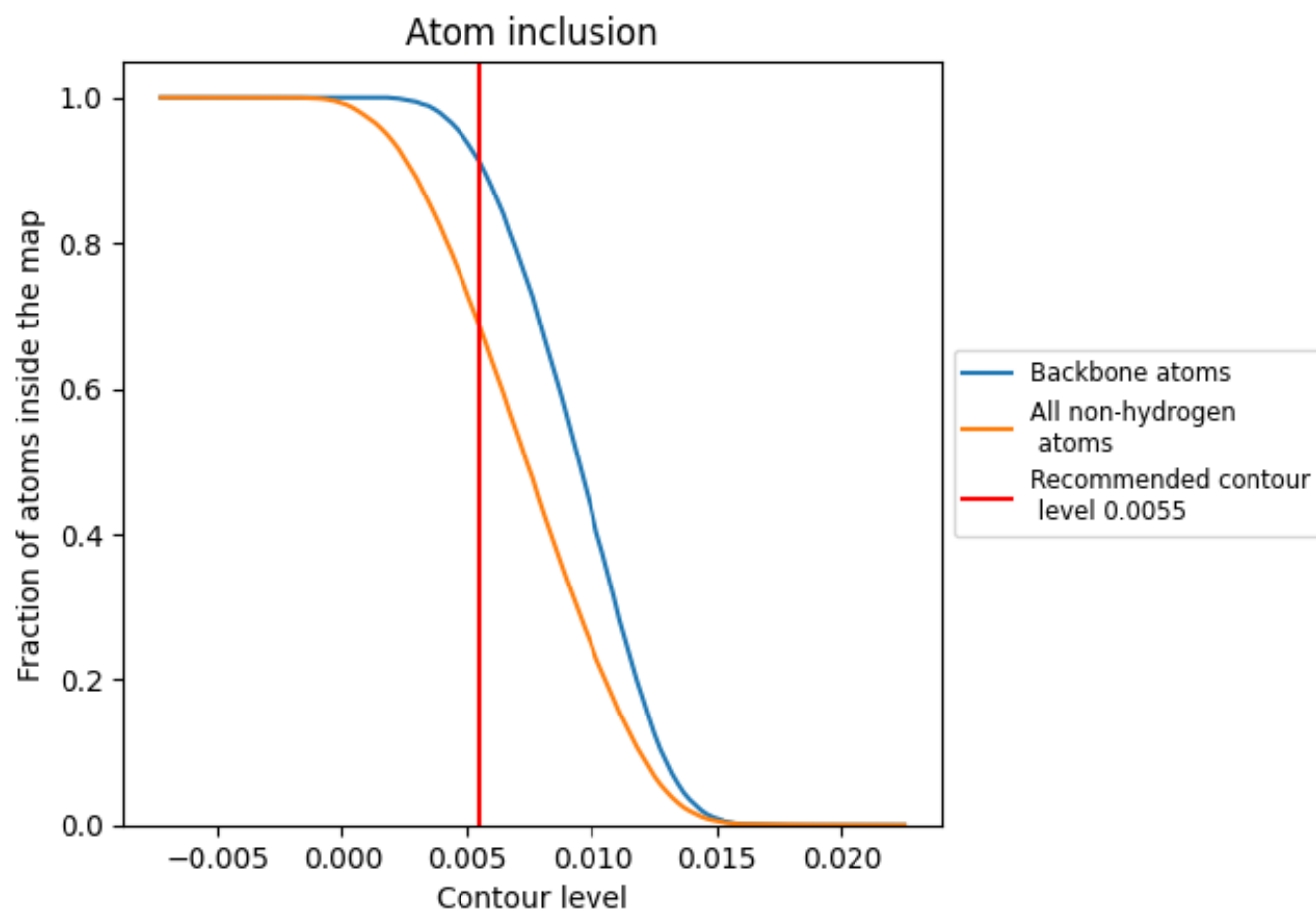
## 9.3 Atom inclusion mapped to coordinate model [i](#)



The images above show the model with each residue coloured according to its atom inclusion. This shows to what extent they are inside the map at the recommended contour level (0.0055).



## 9.4 Atom inclusion [i](#)



At the recommended contour level, 91% of all backbone atoms, 69% of all non-hydrogen atoms, are inside the map.

9.5 Map-model fit summary ⓘ

The table lists the average atom inclusion at the recommended contour level (0.0055) and Q-score for the entire model and for each chain.

Chain	Atom inclusion	Q-score
All	<div></div> 0.6869	<div></div> 0.3630
A	<div></div> 0.7468	<div></div> 0.3970
B	<div></div> 0.6345	<div></div> 0.3630
C	<div></div> 0.6541	<div></div> 0.3420
D	<div></div> 0.7649	<div></div> 0.4000
E	<div></div> 0.7024	<div></div> 0.3800
F	<div></div> 0.4892	<div></div> 0.2630
G	<div></div> 0.6370	<div></div> 0.3630
H	<div></div> 0.6263	<div></div> 0.2490
I	<div></div> 0.6662	<div></div> 0.2270

1.0

0.0

<0.0