



Full wwPDB X-ray Structure Validation Report ⓘ

Nov 9, 2020 – 10:38 AM EST

PDB ID : 7JHM
Title : Structure of human beta 1,3-N-acetylglucosaminyltransferase 2 with N-acetyl-lactosamine
Authors : Hao, Y.; Huang, X.
Deposited on : 2020-07-20
Resolution : 2.19 Å(reported)

This is a Full wwPDB X-ray Structure Validation Report for a publicly released PDB entry.

We welcome your comments at validation@mail.wwpdb.org

A user guide is available at

<https://www.wwpdb.org/validation/2017/XrayValidationReportHelp>

with specific help available everywhere you see the ⓘ symbol.

The following versions of software and data (see [references ⓘ](#)) were used in the production of this report:

MolProbity : 4.02b-467
Mogul : 1.8.5 (274361), CSD as541be (2020)
Xtriage (Phenix) : 1.13
EDS : 2.14.6
buster-report : 1.1.7 (2018)
Percentile statistics : 20191225.v01 (using entries in the PDB archive December 25th 2019)
Refmac : 5.8.0158
CCP4 : 7.0.044 (Gargrove)
Ideal geometry (proteins) : Engh & Huber (2001)
Ideal geometry (DNA, RNA) : Parkinson et al. (1996)
Validation Pipeline (wwPDB-VP) : 2.14.6

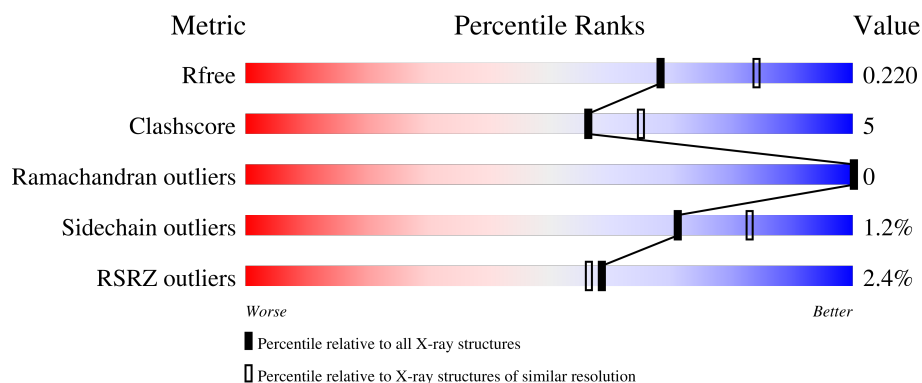
1 Overall quality at a glance

The following experimental techniques were used to determine the structure:

X-RAY DIFFRACTION

The reported resolution of this entry is 2.19 Å.

Percentile scores (ranging between 0-100) for global validation metrics of the entry are shown in the following graphic. The table shows the number of entries on which the scores are based.



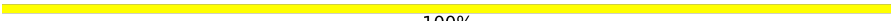
Metric	Whole archive (#Entries)	Similar resolution (#Entries, resolution range(Å))
R_{free}	130704	4898 (2.20-2.20)
Clashscore	141614	5594 (2.20-2.20)
Ramachandran outliers	138981	5503 (2.20-2.20)
Sidechain outliers	138945	5504 (2.20-2.20)
RSRZ outliers	127900	4800 (2.20-2.20)

The table below summarises the geometric issues observed across the polymeric chains and their fit to the electron density. The red, orange, yellow and green segments on the lower bar indicate the fraction of residues that contain outliers for ≥ 3 , 2, 1 and 0 types of geometric quality criteria respectively. A grey segment represents the fraction of residues that are not modelled. The numeric value for each fraction is indicated below the corresponding segment, with a dot representing fractions $\leq 5\%$. The upper red bar (where present) indicates the fraction of residues that have poor fit to the electron density. The numeric value is given above the bar.

Mol	Chain	Length	Quality of chain
1	A	370	<div> <div>2%</div> <div> <div></div> <div>78%</div> <div>11%</div> <div>11%</div> </div> </div>
1	B	370	<div> <div>3%</div> <div> <div></div> <div>79%</div> <div>9%</div> <div>11%</div> </div> </div>
2	C	5	<div> <div>20%</div> <div>60%</div> <div>20%</div> </div>
2	D	5	<div> <div>20%</div> <div>80%</div> </div>
3	E	2	<div> <div>100%</div> </div>

Continued on next page...

Continued from previous page...

Mol	Chain	Length	Quality of chain
3	G	2	 100%

2 Entry composition

There are 6 unique types of molecules in this entry. The entry contains 5960 atoms, of which 0 are hydrogens and 0 are deuteriums.

In the tables below, the ZeroOcc column contains the number of atoms modelled with zero occupancy, the AltConf column contains the number of residues with at least one atom in alternate conformation and the Trace column contains the number of residues modelled with at most 2 atoms.

- Molecule 1 is a protein called N-acetylglucosaminide beta-1,3-N-acetylglucosaminyltransferase 2.

Mol	Chain	Residues	Atoms					ZeroOcc	AltConf	Trace
1	A	331	Total	C	N	O	S	0	3	0
			2749	1767	473	495	14			
1	B	330	Total	C	N	O	S	0	2	0
			2735	1757	472	494	12			

There are 34 discrepancies between the modelled and reference sequences:

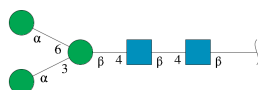
Chain	Residue	Modelled	Actual	Comment	Reference
A	28	MET	-	initiating methionine	UNP Q9NY97
A	29	HIS	-	expression tag	UNP Q9NY97
A	30	HIS	-	expression tag	UNP Q9NY97
A	31	HIS	-	expression tag	UNP Q9NY97
A	32	HIS	-	expression tag	UNP Q9NY97
A	33	HIS	-	expression tag	UNP Q9NY97
A	34	HIS	-	expression tag	UNP Q9NY97
A	35	HIS	-	expression tag	UNP Q9NY97
A	36	HIS	-	expression tag	UNP Q9NY97
A	37	GLU	-	expression tag	UNP Q9NY97
A	38	ASN	-	expression tag	UNP Q9NY97
A	39	LEU	-	expression tag	UNP Q9NY97
A	40	TYR	-	expression tag	UNP Q9NY97
A	41	PHE	-	expression tag	UNP Q9NY97
A	42	GLN	-	expression tag	UNP Q9NY97
A	43	GLY	-	expression tag	UNP Q9NY97
A	44	SER	-	expression tag	UNP Q9NY97
B	28	MET	-	initiating methionine	UNP Q9NY97
B	29	HIS	-	expression tag	UNP Q9NY97
B	30	HIS	-	expression tag	UNP Q9NY97
B	31	HIS	-	expression tag	UNP Q9NY97
B	32	HIS	-	expression tag	UNP Q9NY97
B	33	HIS	-	expression tag	UNP Q9NY97
B	34	HIS	-	expression tag	UNP Q9NY97

Continued on next page...

Continued from previous page...

Chain	Residue	Modelled	Actual	Comment	Reference
B	35	HIS	-	expression tag	UNP Q9NY97
B	36	HIS	-	expression tag	UNP Q9NY97
B	37	GLU	-	expression tag	UNP Q9NY97
B	38	ASN	-	expression tag	UNP Q9NY97
B	39	LEU	-	expression tag	UNP Q9NY97
B	40	TYR	-	expression tag	UNP Q9NY97
B	41	PHE	-	expression tag	UNP Q9NY97
B	42	GLN	-	expression tag	UNP Q9NY97
B	43	GLY	-	expression tag	UNP Q9NY97
B	44	SER	-	expression tag	UNP Q9NY97

- Molecule 2 is an oligosaccharide called alpha-D-mannopyranose-(1-3)-[alpha-D-mannopyranose-(1-6)]beta-D-mannopyranose-(1-4)-2-acetamido-2-deoxy-beta-D-glucopyranose-(1-4)-2-acetamido-2-deoxy-beta-D-glucopyranose.



Mol	Chain	Residues	Atoms				ZeroOcc	AltConf	Trace
2	C	5	Total	C	N	O	0	0	0
			61	34	2	25			
2	D	5	Total	C	N	O	0	0	0
			61	34	2	25			

- Molecule 3 is an oligosaccharide called beta-D-galactopyranose-(1-4)-2-acetamido-2-deoxy-beta-D-glucopyranose.



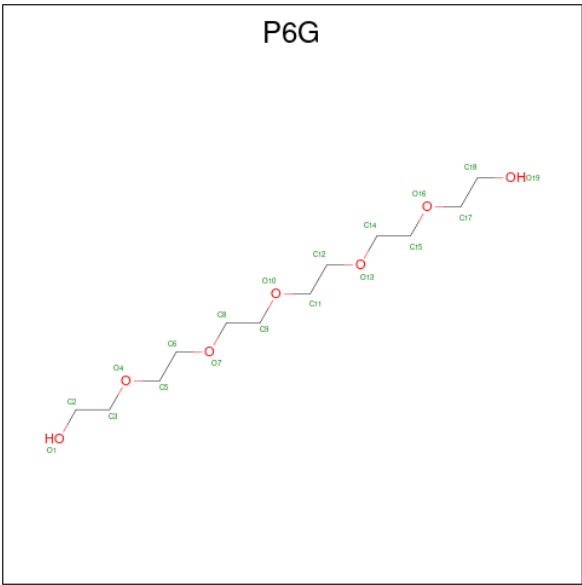
Mol	Chain	Residues	Atoms				ZeroOcc	AltConf	Trace
3	E	2	Total	C	N	O	0	0	0
			26	14	1	11			
3	G	2	Total	C	N	O	0	0	0
			26	14	1	11			

- Molecule 4 is 2-acetamido-2-deoxy-beta-D-glucopyranose (three-letter code: NAG) (formula: C₈H₁₅NO₆).



Mol	Chain	Residues	Atoms				ZeroOcc	AltConf
4	A	1	Total	C	N	O	0	0
			14	8	1	5		
4	A	1	Total	C	N	O	0	0
			14	8	1	5		
4	B	1	Total	C	N	O	0	0
			14	8	1	5		

- Molecule 5 is HEXAETHYLENE GLYCOL (three-letter code: P6G) (formula: C₁₂H₂₆O₇).



Mol	Chain	Residues	Atoms			ZeroOcc	AltConf
5	A	1	Total	C	O	0	0
			19	12	7		

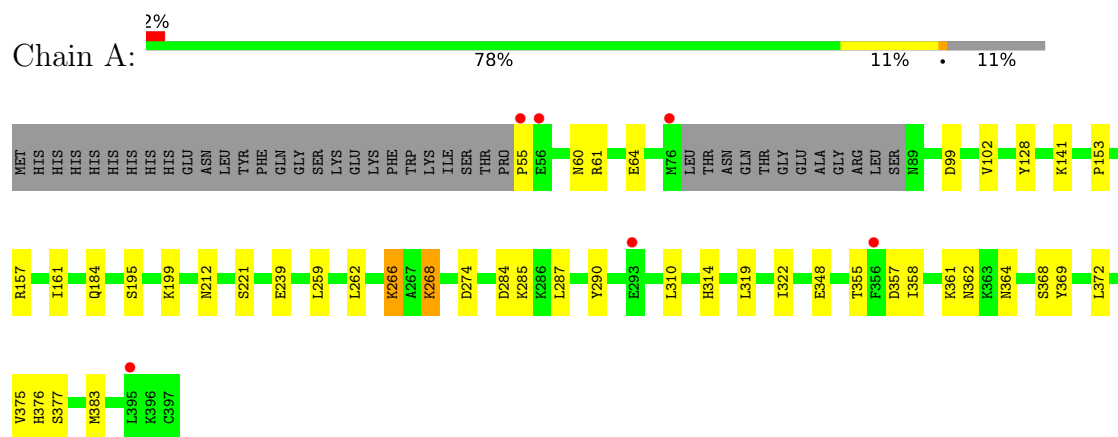
- Molecule 6 is water.

Mol	Chain	Residues	Atoms		ZeroOcc	AltConf
6	A	119	Total 119	O 119	0	0
6	B	122	Total 122	O 122	0	0

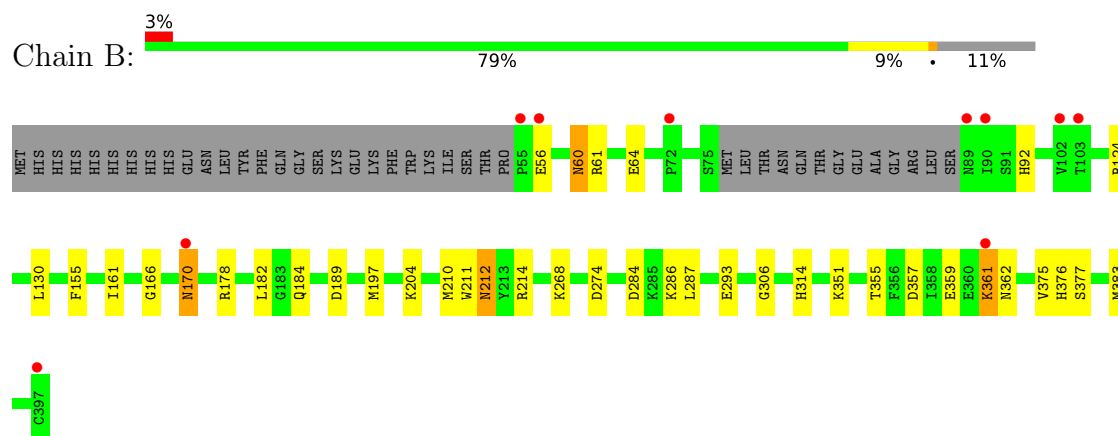
3 Residue-property plots [i](#)

These plots are drawn for all protein, RNA, DNA and oligosaccharide chains in the entry. The first graphic for a chain summarises the proportions of the various outlier classes displayed in the second graphic. The second graphic shows the sequence view annotated by issues in geometry and electron density. Residues are color-coded according to the number of geometric quality criteria for which they contain at least one outlier: green = 0, yellow = 1, orange = 2 and red = 3 or more. A red dot above a residue indicates a poor fit to the electron density ($RSRZ > 2$). Stretches of 2 or more consecutive residues without any outlier are shown as a green connector. Residues present in the sample, but not in the model, are shown in grey.

- Molecule 1: N-acetylactosaminide beta-1,3-N-acetylglucosaminyltransferase 2



- Molecule 1: N-acetylactosaminide beta-1,3-N-acetylglucosaminyltransferase 2



- Molecule 2: alpha-D-mannopyranose-(1-3)-[alpha-D-mannopyranose-(1-6)]beta-D-mannopyranose-(1-4)-2-acetamido-2-deoxy-beta-D-glucopyranose-(1-4)-2-acetamido-2-deoxy-beta-D-glucopyranose



- Molecule 2: α -D-mannopyranose-(1-3)-[α -D-mannopyranose-(1-6)] β -D-mannopyranose-(1-4)-2-acetamido-2-deoxy- β -D-glucopyranose-(1-4)-2-acetamido-2-deoxy- β -D-glucopyranose

Chain D:  20% 80%

MAG1
MAG2
BMJ3
MAN4
MAN5

- Molecule 3: β -D-galactopyranose-(1-4)-2-acetamido-2-deoxy- β -D-glucopyranose

Chain E:  100%

MAG1
GAL2

- Molecule 3: β -D-galactopyranose-(1-4)-2-acetamido-2-deoxy- β -D-glucopyranose

Chain G:  100%

MAG1
GAL2

4 Data and refinement statistics

Property	Value	Source
Space group	I 1 2 1	Depositor
Cell constants a, b, c, α , β , γ	82.51Å 76.99Å 134.39Å 90.00° 105.06° 90.00°	Depositor
Resolution (Å)	46.46 – 2.19 46.46 – 2.19	Depositor EDS
% Data completeness (in resolution range)	99.7 (46.46-2.19) 99.9 (46.46-2.19)	Depositor EDS
R_{merge}	0.11	Depositor
R_{sym}	(Not available)	Depositor
$\langle I/\sigma(I) \rangle$ ¹	2.08 (at 2.18Å)	Xtrriage
Refinement program	PHENIX 1.10.1_2155	Depositor
R, R_{free}	0.189 , 0.219 0.190 , 0.220	Depositor DCC
R_{free} test set	2131 reflections (5.08%)	wwPDB-VP
Wilson B-factor (Å ²)	33.1	Xtrriage
Anisotropy	0.589	Xtrriage
Bulk solvent k_{sol} (e/Å ³), B_{sol} (Å ²)	0.35 , 45.1	EDS
L-test for twinning ²	$\langle L \rangle = 0.49$, $\langle L^2 \rangle = 0.32$	Xtrriage
Estimated twinning fraction	No twinning to report.	Xtrriage
F_o, F_c correlation	0.96	EDS
Total number of atoms	5960	wwPDB-VP
Average B, all atoms (Å ²)	42.0	wwPDB-VP

Xtrriage's analysis on translational NCS is as follows: *The analyses of the Patterson function reveals a significant off-origin peak that is 73.71 % of the origin peak, indicating pseudo-translational symmetry. The chance of finding a peak of this or larger height randomly in a structure without pseudo-translational symmetry is equal to 1.7495e-06. The detected translational NCS is most likely also responsible for the elevated intensity ratio.*

¹Intensities estimated from amplitudes.

²Theoretical values of $\langle |L| \rangle$, $\langle L^2 \rangle$ for acentric reflections are 0.5, 0.333 respectively for untwinned datasets, and 0.375, 0.2 for perfectly twinned datasets.

5 Model quality

5.1 Standard geometry

Bond lengths and bond angles in the following residue types are not validated in this section: GAL, BMA, NAG, P6G, MAN

The Z score for a bond length (or angle) is the number of standard deviations the observed value is removed from the expected value. A bond length (or angle) with $|Z| > 5$ is considered an outlier worth inspection. RMSZ is the root-mean-square of all Z scores of the bond lengths (or angles).

Mol	Chain	Bond lengths		Bond angles	
		RMSZ	$\# Z > 5$	RMSZ	$\# Z > 5$
1	A	0.28	0/2824	0.47	0/3825
1	B	0.29	0/2810	0.48	0/3807
All	All	0.28	0/5634	0.48	0/7632

There are no bond length outliers.

There are no bond angle outliers.

There are no chirality outliers.

There are no planarity outliers.

5.2 Too-close contacts

In the following table, the Non-H and H(model) columns list the number of non-hydrogen atoms and hydrogen atoms in the chain respectively. The H(added) column lists the number of hydrogen atoms added and optimized by MolProbity. The Clashes column lists the number of clashes within the asymmetric unit, whereas Symm-Clashes lists symmetry related clashes.

Mol	Chain	Non-H	H(model)	H(added)	Clashes	Symm-Clashes
1	A	2749	0	2692	28	0
1	B	2735	0	2675	28	0
2	C	61	0	52	1	0
2	D	61	0	52	0	0
3	E	26	0	24	0	0
3	G	26	0	24	0	0
4	A	28	0	26	1	0
4	B	14	0	13	0	0
5	A	19	0	26	2	0
6	A	119	0	0	2	0
6	B	122	0	0	3	0
All	All	5960	0	5584	57	0

The all-atom clashscore is defined as the number of clashes found per 1000 atoms (including hydrogen atoms). The all-atom clashscore for this structure is 5.

All (57) close contacts within the same asymmetric unit are listed below, sorted by their clash magnitude.

Atom-1	Atom-2	Interatomic distance (Å)	Clash overlap (Å)
1:A:369:TYR:HA	1:A:372:LEU:HD12	1.57	0.86
1:A:361:LYS:O	1:A:364:ASN:ND2	2.10	0.84
1:B:56:GLU:O	1:B:61:ARG:NH1	2.19	0.74
1:A:157:ARG:HH21	5:A:403:P6G:H62	1.55	0.70
1:B:284:ASP:HB3	1:B:287:LEU:HD12	1.74	0.69
1:B:359:GLU:HG3	1:B:361:LYS:HD2	1.76	0.66
1:A:60:ASN:O	1:A:64:GLU:HG2	1.98	0.64
1:A:161:ILE:HG13	1:A:383:MET:HE1	1.78	0.64
1:B:161:ILE:HG13	1:B:383:MET:HE1	1.78	0.63
1:B:274:ASP:OD2	1:B:355:THR:OG1	2.16	0.62
1:B:92:HIS:HA	1:B:124:ARG:HB3	1.83	0.60
1:A:266:LYS:NZ	1:A:348:GLU:OE2	2.34	0.59
1:B:130:LEU:HD13	1:B:211:TRP:CE2	2.36	0.59
1:A:274:ASP:OD1	1:A:355:THR:OG1	2.20	0.58
1:A:268:LYS:HD3	1:A:314:HIS:CD2	2.42	0.55
1:A:357:ASP:CG	1:A:358:ILE:H	2.11	0.54
1:B:60:ASN:O	1:B:64:GLU:HG3	2.07	0.54
1:A:99:ASP:O	1:A:102:VAL:HG22	2.08	0.54
1:A:372:LEU:HD13	1:A:375[B]:VAL:CG2	2.38	0.54
1:A:141:LYS:NZ	1:A:239:GLU:HG2	2.23	0.53
4:A:401:NAG:O4	6:A:501:HOH:O	2.19	0.52
1:B:286:LYS:N	1:B:286:LYS:HD2	2.25	0.51
1:A:362:ASN:HB3	1:A:368:SER:OG	2.11	0.51
1:B:268:LYS:HE2	1:B:314:HIS:NE2	2.26	0.51
1:B:357:ASP:HA	1:B:375:VAL:HG23	1.92	0.51
1:B:361:LYS:HD3	1:B:362:ASN:N	2.26	0.51
1:B:361:LYS:HD3	1:B:362:ASN:H	1.75	0.50
1:A:262:LEU:HD22	1:A:266:LYS:HG2	1.94	0.49
1:B:130:LEU:HD13	1:B:211:TRP:NE1	2.28	0.48
1:B:124:ARG:HG3	6:B:522:HOH:O	2.12	0.48
1:A:141:LYS:HZ1	1:A:239:GLU:HG2	1.79	0.47
1:A:284:ASP:HB3	1:A:287:LEU:HG	1.96	0.47
1:B:293:GLU:CD	1:B:293:GLU:H	2.18	0.47
1:B:166:GLY:O	1:B:178:ARG:HD3	2.15	0.46
1:A:259:LEU:HD21	1:A:310:LEU:HD21	1.97	0.46
1:B:161:ILE:CG1	1:B:383:MET:HE1	2.46	0.46
1:B:284:ASP:HB3	1:B:287:LEU:CD1	2.44	0.46

Continued on next page...

Continued from previous page...

Atom-1	Atom-2	Interatomic distance (Å)	Clash overlap (Å)
1:B:189:ASP:OD2	1:B:214:ARG:NE	2.36	0.46
1:A:184:GLN:HG3	1:A:212:ASN:HA	1.98	0.45
1:B:56:GLU:HA	1:B:61:ARG:HH11	1.80	0.45
1:B:376:HIS:HA	1:B:377:SER:HA	1.71	0.45
1:A:55:PRO:O	1:A:61:ARG:HD3	2.17	0.45
1:A:221:SER:HB2	6:A:544:HOH:O	2.17	0.44
1:A:195:SER:O	1:A:199:LYS:HD2	2.18	0.44
1:A:357:ASP:HB2	1:A:376:HIS:O	2.18	0.43
1:A:357:ASP:OD2	1:A:358:ILE:N	2.44	0.43
1:A:285:LYS:HG2	1:A:290:TYR:CE1	2.55	0.42
1:B:170:ASN:ND2	1:B:170:ASN:O	2.49	0.42
1:B:306:GLY:HA3	6:B:557:HOH:O	2.20	0.41
1:B:351:LYS:HG2	6:B:573:HOH:O	2.20	0.41
1:A:376:HIS:CE1	1:A:377:SER:HB3	2.55	0.41
1:A:319:LEU:O	1:A:322:ILE:HG22	2.20	0.41
1:B:184:GLN:NE2	1:B:212:ASN:ND2	2.69	0.41
1:A:128:TYR:HE1	2:C:2:NAG:H82	1.85	0.41
1:B:182:LEU:O	1:B:210:MET:HA	2.21	0.41
1:A:153:PRO:HG3	5:A:403:P6G:H181	2.03	0.40
1:B:155:PHE:CE2	1:B:197:MET:HE2	2.56	0.40

There are no symmetry-related clashes.

5.3 Torsion angles

5.3.1 Protein backbone

In the following table, the Percentiles column shows the percent Ramachandran outliers of the chain as a percentile score with respect to all X-ray entries followed by that with respect to entries of similar resolution.

The Analysed column shows the number of residues for which the backbone conformation was analysed, and the total number of residues.

Mol	Chain	Analysed	Favoured	Allowed	Outliers	Percentiles	
1	A	330/370 (89%)	321 (97%)	9 (3%)	0	100	100
1	B	328/370 (89%)	321 (98%)	7 (2%)	0	100	100
All	All	658/740 (89%)	642 (98%)	16 (2%)	0	100	100

There are no Ramachandran outliers to report.

5.3.2 Protein sidechains ⓘ

In the following table, the Percentiles column shows the percent sidechain outliers of the chain as a percentile score with respect to all X-ray entries followed by that with respect to entries of similar resolution.

The Analysed column shows the number of residues for which the sidechain conformation was analysed, and the total number of residues.

Mol	Chain	Analysed	Rotameric	Outliers	Percentiles	
1	A	307/339 (91%)	305 (99%)	2 (1%)	84	91
1	B	305/339 (90%)	300 (98%)	5 (2%)	62	76
All	All	612/678 (90%)	605 (99%)	7 (1%)	71	85

All (7) residues with a non-rotameric sidechain are listed below:

Mol	Chain	Res	Type
1	A	266	LYS
1	A	268	LYS
1	B	60	ASN
1	B	170	ASN
1	B	204	LYS
1	B	212	ASN
1	B	361	LYS

Some sidechains can be flipped to improve hydrogen bonding and reduce clashes. All (3) such sidechains are listed below:

Mol	Chain	Res	Type
1	B	184	GLN
1	B	212	ASN
1	B	362	ASN

5.3.3 RNA ⓘ

There are no RNA molecules in this entry.

5.4 Non-standard residues in protein, DNA, RNA chains ⓘ

There are no non-standard protein/DNA/RNA residues in this entry.

5.5 Carbohydrates ⓘ

14 monosaccharides are modelled in this entry.

In the following table, the Counts columns list the number of bonds (or angles) for which Mogul statistics could be retrieved, the number of bonds (or angles) that are observed in the model and the number of bonds (or angles) that are defined in the Chemical Component Dictionary. The Link column lists molecule types, if any, to which the group is linked. The Z score for a bond length (or angle) is the number of standard deviations the observed value is removed from the expected value. A bond length (or angle) with $|Z| > 2$ is considered an outlier worth inspection. RMSZ is the root-mean-square of all Z scores of the bond lengths (or angles).

Mol	Type	Chain	Res	Link	Bond lengths			Bond angles		
					Counts	RMSZ	# $ Z > 2$	Counts	RMSZ	# $ Z > 2$
2	NAG	C	1	1,2	14,14,15	0.46	0	17,19,21	0.44	0
2	NAG	C	2	2	14,14,15	0.72	1 (7%)	17,19,21	0.50	0
2	BMA	C	3	2	11,11,12	0.70	0	15,15,17	1.25	2 (13%)
2	MAN	C	4	2	11,11,12	1.22	1 (9%)	15,15,17	0.94	1 (6%)
2	MAN	C	5	2	11,11,12	0.66	0	15,15,17	1.07	2 (13%)
2	NAG	D	1	1,2	14,14,15	0.43	0	17,19,21	0.49	0
2	NAG	D	2	2	14,14,15	0.75	1 (7%)	17,19,21	0.51	0
2	BMA	D	3	2	11,11,12	0.78	0	15,15,17	1.19	2 (13%)
2	MAN	D	4	2	11,11,12	0.73	0	15,15,17	1.03	2 (13%)
2	MAN	D	5	2	11,11,12	0.84	0	15,15,17	0.94	1 (6%)
3	NAG	E	1	3	15,15,15	1.45	1 (6%)	21,21,21	1.40	4 (19%)
3	GAL	E	2	3	11,11,12	1.32	1 (9%)	15,15,17	2.07	4 (26%)
3	NAG	G	1	3	15,15,15	1.49	3 (20%)	21,21,21	1.27	2 (9%)
3	GAL	G	2	3	11,11,12	1.29	1 (9%)	15,15,17	1.84	5 (33%)

In the following table, the Chirals column lists the number of chiral outliers, the number of chiral centers analysed, the number of these observed in the model and the number defined in the Chemical Component Dictionary. Similar counts are reported in the Torsion and Rings columns. '-' means no outliers of that kind were identified.

Mol	Type	Chain	Res	Link	Chirals	Torsions	Rings
2	NAG	C	1	1,2	-	0/6/23/26	0/1/1/1
2	NAG	C	2	2	-	0/6/23/26	0/1/1/1
2	BMA	C	3	2	-	0/2/19/22	0/1/1/1
2	MAN	C	4	2	-	2/2/19/22	0/1/1/1
2	MAN	C	5	2	-	2/2/19/22	0/1/1/1
2	NAG	D	1	1,2	-	0/6/23/26	0/1/1/1
2	NAG	D	2	2	-	0/6/23/26	0/1/1/1

Continued on next page...

Continued from previous page...

Mol	Type	Chain	Res	Link	Chirals	Torsions	Rings
2	BMA	D	3	2	-	0/2/19/22	0/1/1/1
2	MAN	D	4	2	-	0/2/19/22	0/1/1/1
2	MAN	D	5	2	-	0/2/19/22	0/1/1/1
3	NAG	E	1	3	-	0/6/26/26	0/1/1/1
3	GAL	E	2	3	-	0/2/19/22	0/1/1/1
3	NAG	G	1	3	-	2/6/26/26	0/1/1/1
3	GAL	G	2	3	-	0/2/19/22	0/1/1/1

All (9) bond length outliers are listed below:

Mol	Chain	Res	Type	Atoms	Z	Observed(Å)	Ideal(Å)
2	C	4	MAN	O5-C1	-3.55	1.38	1.43
3	G	1	NAG	C4-C5	3.52	1.60	1.53
3	E	1	NAG	C4-C5	3.47	1.60	1.53
2	D	2	NAG	O5-C1	-2.61	1.39	1.43
2	C	2	NAG	O5-C1	-2.60	1.39	1.43
3	E	2	GAL	O5-C1	-2.54	1.39	1.43
3	G	2	GAL	O5-C1	-2.34	1.40	1.43
3	G	1	NAG	C4-C3	2.17	1.57	1.52
3	G	1	NAG	C6-C5	2.17	1.59	1.51

All (25) bond angle outliers are listed below:

Mol	Chain	Res	Type	Atoms	Z	Observed(°)	Ideal(°)
3	E	2	GAL	C1-O5-C5	5.90	120.19	112.19
3	G	2	GAL	C1-O5-C5	4.46	118.24	112.19
3	E	1	NAG	C1-C2-C3	-3.00	106.46	110.54
2	C	5	MAN	C1-O5-C5	2.80	115.98	112.19
3	E	2	GAL	O3-C3-C2	-2.56	105.10	109.99
3	G	1	NAG	O1-C1-C2	-2.49	104.04	109.22
3	G	2	GAL	O5-C5-C6	2.49	111.10	107.20
2	C	3	BMA	O3-C3-C2	2.44	114.66	109.99
3	G	2	GAL	O2-C2-C1	-2.38	104.28	109.15
2	C	5	MAN	O2-C2-C3	-2.35	105.43	110.14
3	G	2	GAL	O3-C3-C2	-2.34	105.50	109.99
3	E	2	GAL	O2-C2-C1	-2.29	104.47	109.15
3	G	1	NAG	C1-C2-C3	-2.29	107.42	110.54
3	E	1	NAG	C6-C5-C4	-2.28	107.66	113.00
2	C	3	BMA	O3-C3-C4	2.26	115.56	110.35
2	D	5	MAN	O2-C2-C3	-2.22	105.68	110.14
3	G	2	GAL	O4-C4-C3	-2.17	105.32	110.35
2	C	4	MAN	O2-C2-C3	-2.17	105.80	110.14

Continued on next page...

Continued from previous page...

Mol	Chain	Res	Type	Atoms	Z	Observed(°)	Ideal(°)
3	E	2	GAL	O4-C4-C3	-2.13	105.42	110.35
3	E	1	NAG	O1-C1-O5	-2.12	104.02	110.38
2	D	3	BMA	C2-C3-C4	2.12	114.56	110.89
2	D	4	MAN	O2-C2-C3	-2.11	105.90	110.14
2	D	4	MAN	C1-O5-C5	2.06	114.99	112.19
2	D	3	BMA	C3-C4-C5	2.06	113.91	110.24
3	E	1	NAG	O5-C1-C2	-2.05	107.46	109.52

There are no chirality outliers.

All (6) torsion outliers are listed below:

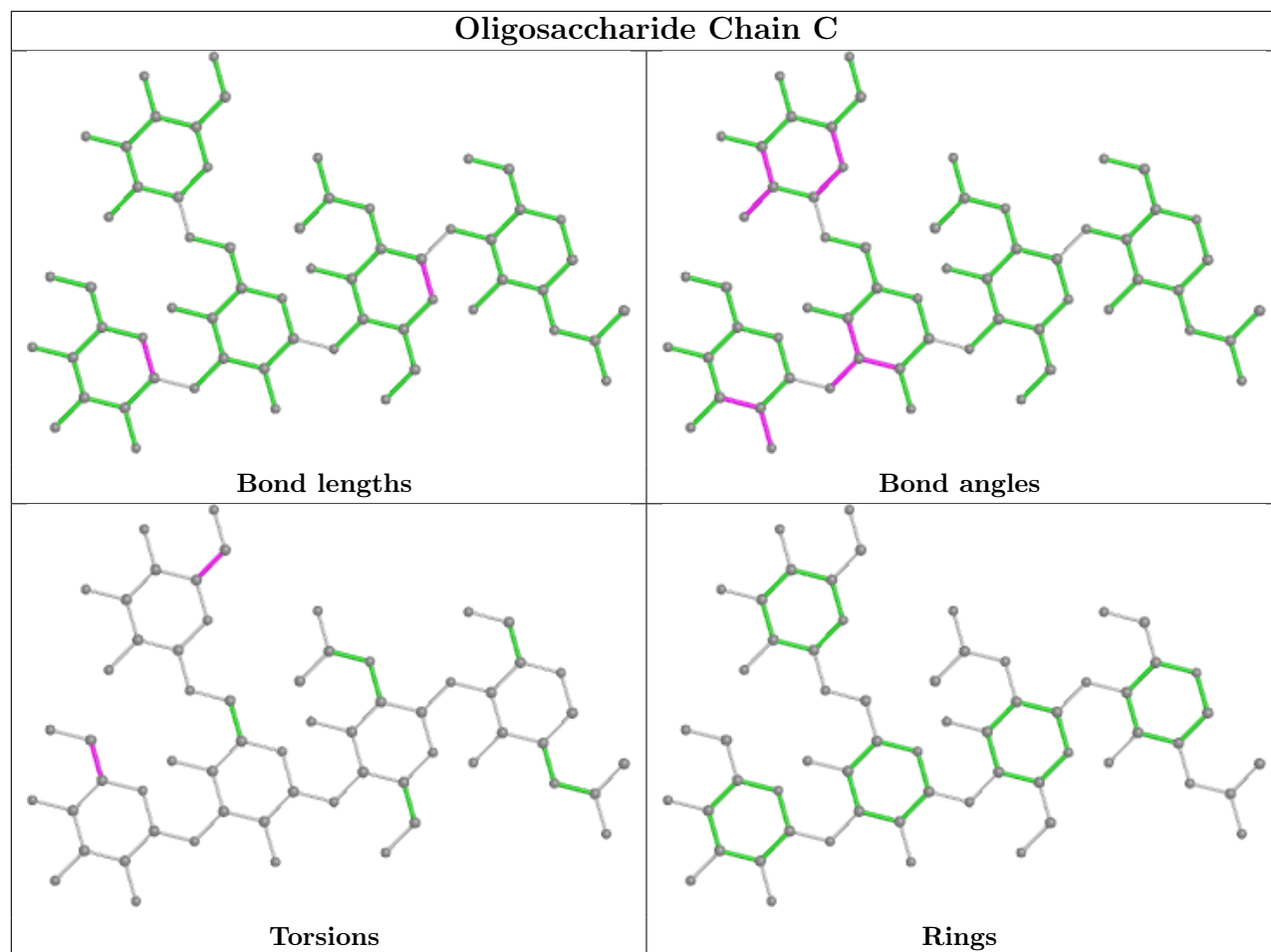
Mol	Chain	Res	Type	Atoms
3	G	1	NAG	C4-C5-C6-O6
2	C	4	MAN	O5-C5-C6-O6
3	G	1	NAG	O5-C5-C6-O6
2	C	4	MAN	C4-C5-C6-O6
2	C	5	MAN	O5-C5-C6-O6
2	C	5	MAN	C4-C5-C6-O6

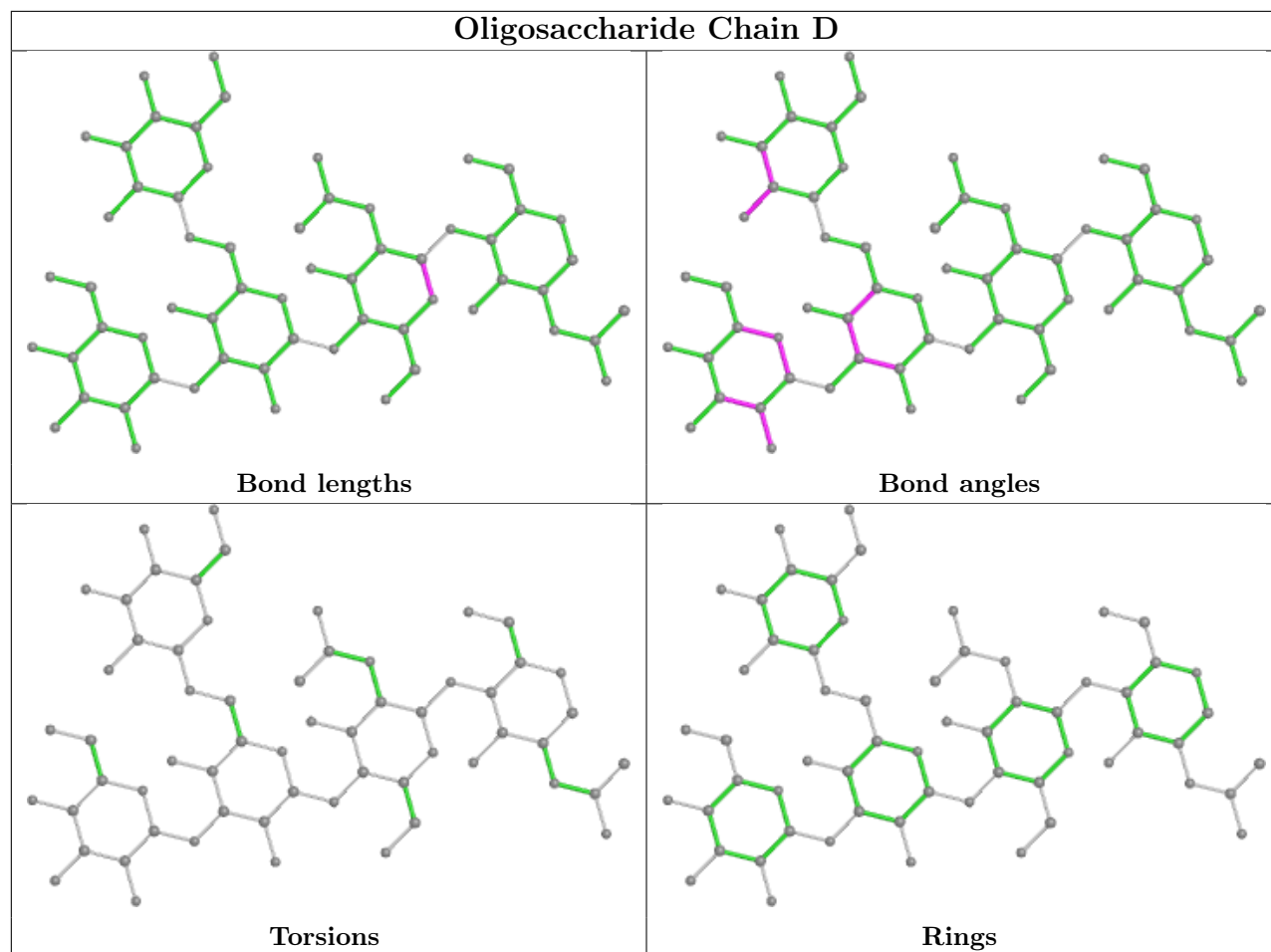
There are no ring outliers.

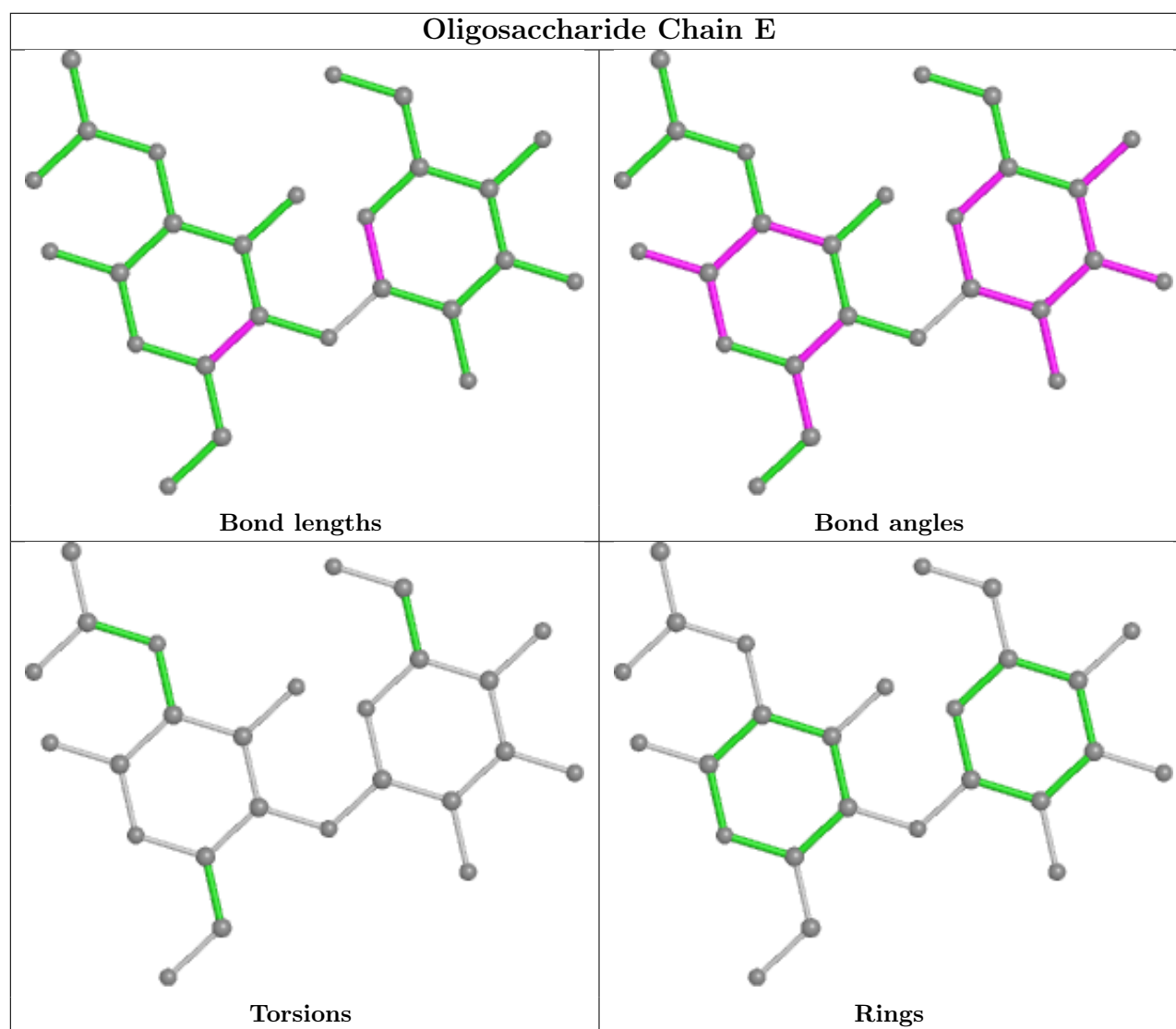
1 monomer is involved in 1 short contact:

Mol	Chain	Res	Type	Clashes	Symm-Clashes
2	C	2	NAG	1	0

The following is a two-dimensional graphical depiction of Mogul quality analysis of bond lengths, bond angles, torsion angles, and ring geometry for oligosaccharide.







5.6 Ligand geometry [i](#)

4 ligands are modelled in this entry.

In the following table, the Counts columns list the number of bonds (or angles) for which Mogul statistics could be retrieved, the number of bonds (or angles) that are observed in the model and the number of bonds (or angles) that are defined in the Chemical Component Dictionary. The Link column lists molecule types, if any, to which the group is linked. The Z score for a bond length (or angle) is the number of standard deviations the observed value is removed from the expected value. A bond length (or angle) with $|Z| > 2$ is considered an outlier worth inspection. RMSZ is the root-mean-square of all Z scores of the bond lengths (or angles).

Mol	Type	Chain	Res	Link	Bond lengths			Bond angles		
					Counts	RMSZ	$\# Z > 2$	Counts	RMSZ	$\# Z > 2$
5	P6G	A	403	-	18,18,18	0.62	0	17,17,17	0.54	0
4	NAG	B	401	1	14,14,15	0.55	0	17,19,21	0.52	0
4	NAG	A	402	1	14,14,15	0.44	0	17,19,21	0.45	0

Mol	Type	Chain	Res	Link	Bond lengths			Bond angles		
					Counts	RMSZ	# Z > 2	Counts	RMSZ	# Z > 2
4	NAG	A	401	1	14,14,15	0.37	0	17,19,21	0.42	0

In the following table, the Chirals column lists the number of chiral outliers, the number of chiral centers analysed, the number of these observed in the model and the number defined in the Chemical Component Dictionary. Similar counts are reported in the Torsion and Rings columns. '-' means no outliers of that kind were identified.

Mol	Type	Chain	Res	Link	Chirals	Torsions	Rings
5	P6G	A	403	-	-	7/16/16/16	-
4	NAG	B	401	1	-	2/6/23/26	0/1/1/1
4	NAG	A	402	1	-	0/6/23/26	0/1/1/1
4	NAG	A	401	1	-	0/6/23/26	0/1/1/1

There are no bond length outliers.

There are no bond angle outliers.

There are no chirality outliers.

All (9) torsion outliers are listed below:

Mol	Chain	Res	Type	Atoms
5	A	403	P6G	O4-C5-C6-O7
5	A	403	P6G	C14-C15-O16-C17
4	B	401	NAG	C4-C5-C6-O6
5	A	403	P6G	C18-C17-O16-C15
5	A	403	P6G	C15-C14-O13-C12
5	A	403	P6G	C12-C11-O10-C9
4	B	401	NAG	O5-C5-C6-O6
5	A	403	P6G	C2-C3-O4-C5
5	A	403	P6G	O1-C2-C3-O4

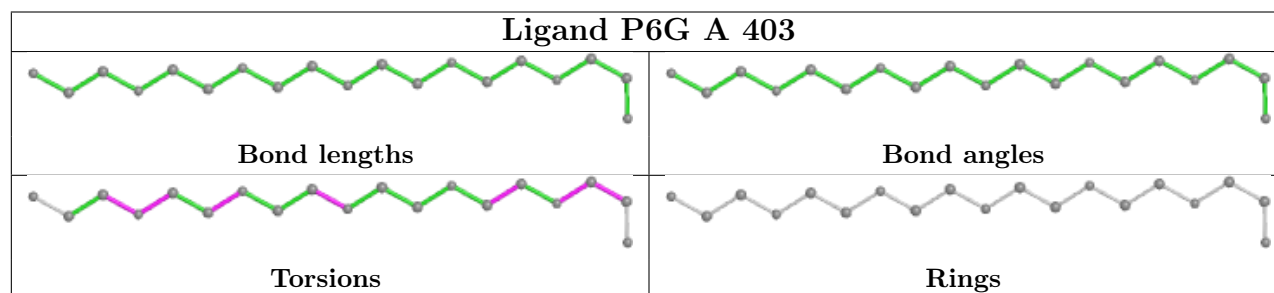
There are no ring outliers.

2 monomers are involved in 3 short contacts:

Mol	Chain	Res	Type	Clashes	Symm-Clashes
5	A	403	P6G	2	0
4	A	401	NAG	1	0

The following is a two-dimensional graphical depiction of Mogul quality analysis of bond lengths, bond angles, torsion angles, and ring geometry for all instances of the Ligand of Interest. In addition, ligands with molecular weight > 250 and outliers as shown on the validation Tables will also be included. For torsion angles, if less than 5% of the Mogul distribution of torsion angles is

within 10 degrees of the torsion angle in question, then that torsion angle is considered an outlier. Any bond that is central to one or more torsion angles identified as an outlier by Mogul will be highlighted in the graph. For rings, the root-mean-square deviation (RMSD) between the ring in question and similar rings identified by Mogul is calculated over all ring torsion angles. If the average RMSD is greater than 60 degrees and the minimal RMSD between the ring in question and any Mogul-identified rings is also greater than 60 degrees, then that ring is considered an outlier. The outliers are highlighted in purple. The color gray indicates Mogul did not find sufficient equivalents in the CSD to analyse the geometry.



5.7 Other polymers [i](#)

There are no such residues in this entry.

5.8 Polymer linkage issues [i](#)

There are no chain breaks in this entry.

6 Fit of model and data [i](#)

6.1 Protein, DNA and RNA chains [i](#)

In the following table, the column labelled ‘#RSRZ > 2’ contains the number (and percentage) of RSRZ outliers, followed by percent RSRZ outliers for the chain as percentile scores relative to all X-ray entries and entries of similar resolution. The OWAB column contains the minimum, median, 95th percentile and maximum values of the occupancy-weighted average B-factor per residue. The column labelled ‘Q < 0.9’ lists the number of (and percentage) of residues with an average occupancy less than 0.9.

Mol	Chain	Analysed	<RSRZ>	#RSRZ>2	OWAB(Å ²)	Q<0.9
1	A	331/370 (89%)	0.13	6 (1%) 68 66	26, 38, 59, 78	0
1	B	330/370 (89%)	0.20	10 (3%) 50 48	26, 41, 65, 83	0
All	All	661/740 (89%)	0.16	16 (2%) 59 56	26, 40, 63, 83	0

All (16) RSRZ outliers are listed below:

Mol	Chain	Res	Type	RSRZ
1	A	356	PHE	4.3
1	A	56	GLU	4.0
1	B	55	PRO	3.7
1	B	56	GLU	3.7
1	B	397	CYS	3.6
1	B	361	LYS	2.7
1	A	395	LEU	2.7
1	B	103	THR	2.6
1	A	76	MET	2.5
1	A	293	GLU	2.5
1	A	55	PRO	2.5
1	B	72	PRO	2.5
1	B	90	ILE	2.3
1	B	102	VAL	2.2
1	B	89	ASN	2.1
1	B	170	ASN	2.1

6.2 Non-standard residues in protein, DNA, RNA chains [i](#)

There are no non-standard protein/DNA/RNA residues in this entry.

6.3 Carbohydrates

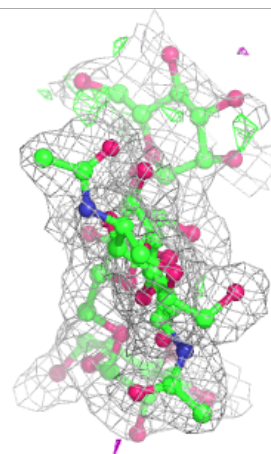
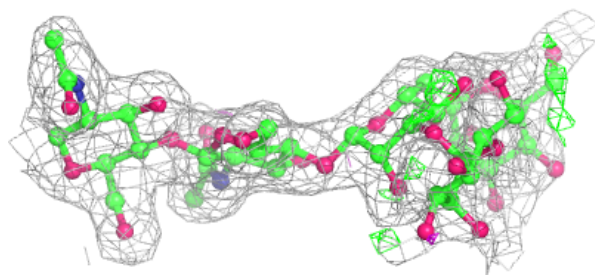
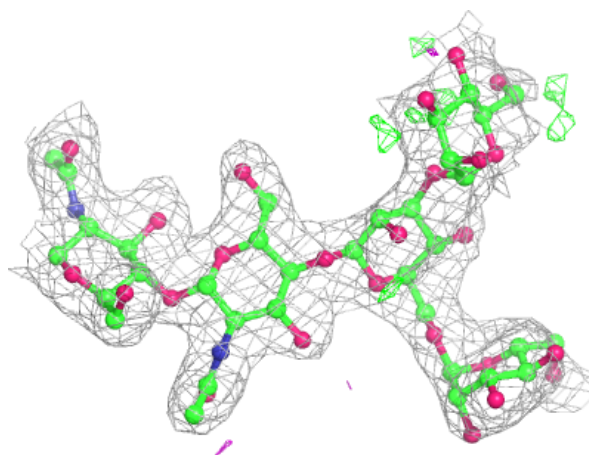
In the following table, the Atoms column lists the number of modelled atoms in the group and the number defined in the chemical component dictionary. The B-factors column lists the minimum, median, 95th percentile and maximum values of B factors of atoms in the group. The column labelled 'Q< 0.9' lists the number of atoms with occupancy less than 0.9.

Mol	Type	Chain	Res	Atoms	RSCC	RSR	B-factors(\AA^2)	Q<0.9
2	MAN	D	5	11/12	0.72	0.25	88,96,101,109	0
2	MAN	C	4	11/12	0.77	0.19	74,81,88,90	0
2	MAN	D	4	11/12	0.78	0.23	81,84,88,92	0
2	BMA	D	3	11/12	0.87	0.18	65,77,84,84	0
2	MAN	C	5	11/12	0.88	0.19	71,75,80,84	0
2	BMA	C	3	11/12	0.89	0.13	54,62,71,72	0
2	NAG	D	2	14/15	0.90	0.12	38,50,59,65	0
3	NAG	G	1	15/15	0.90	0.17	51,64,72,73	0
3	NAG	E	1	15/15	0.91	0.15	50,56,65,74	0
3	GAL	E	2	11/12	0.95	0.11	38,42,47,48	0
2	NAG	D	1	14/15	0.96	0.12	34,36,40,45	0
2	NAG	C	2	14/15	0.96	0.11	31,40,47,47	0
2	NAG	C	1	14/15	0.97	0.10	24,29,32,38	0
3	GAL	G	2	11/12	0.97	0.11	44,47,52,53	0

The following is a graphical depiction of the model fit to experimental electron density for oligosaccharide. Each fit is shown from different orientation to approximate a three-dimensional view.

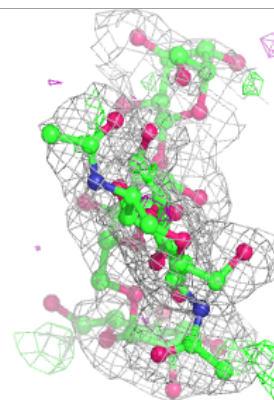
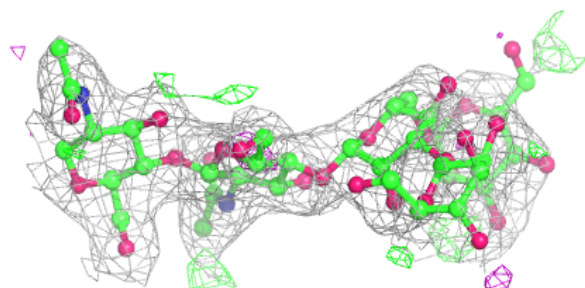
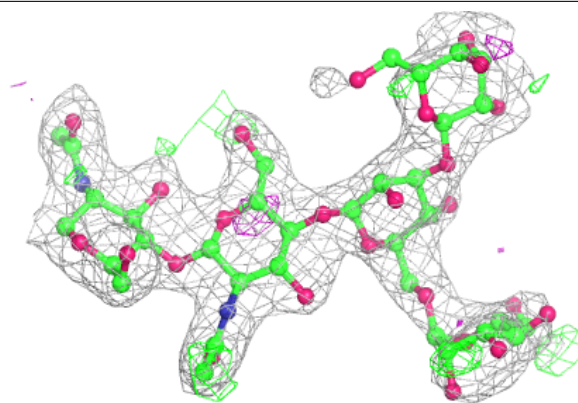
Electron density around Chain C:

$2mF_o-DF_c$ (at 0.7 rmsd) in gray
 mF_o-DF_c (at 3 rmsd) in purple (negative)
and green (positive)

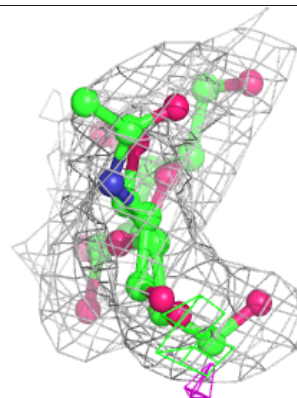
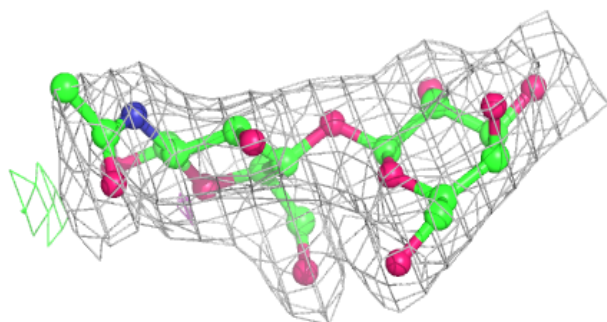
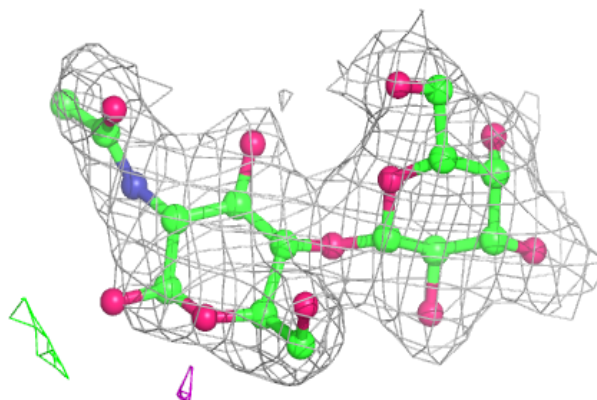


Electron density around Chain D:

$2mF_o-DF_c$ (at 0.7 rmsd) in gray
 mF_o-DF_c (at 3 rmsd) in purple (negative)
and green (positive)

**Electron density around Chain E:**

$2mF_o-DF_c$ (at 0.7 rmsd) in gray
 mF_o-DF_c (at 3 rmsd) in purple (negative)
and green (positive)

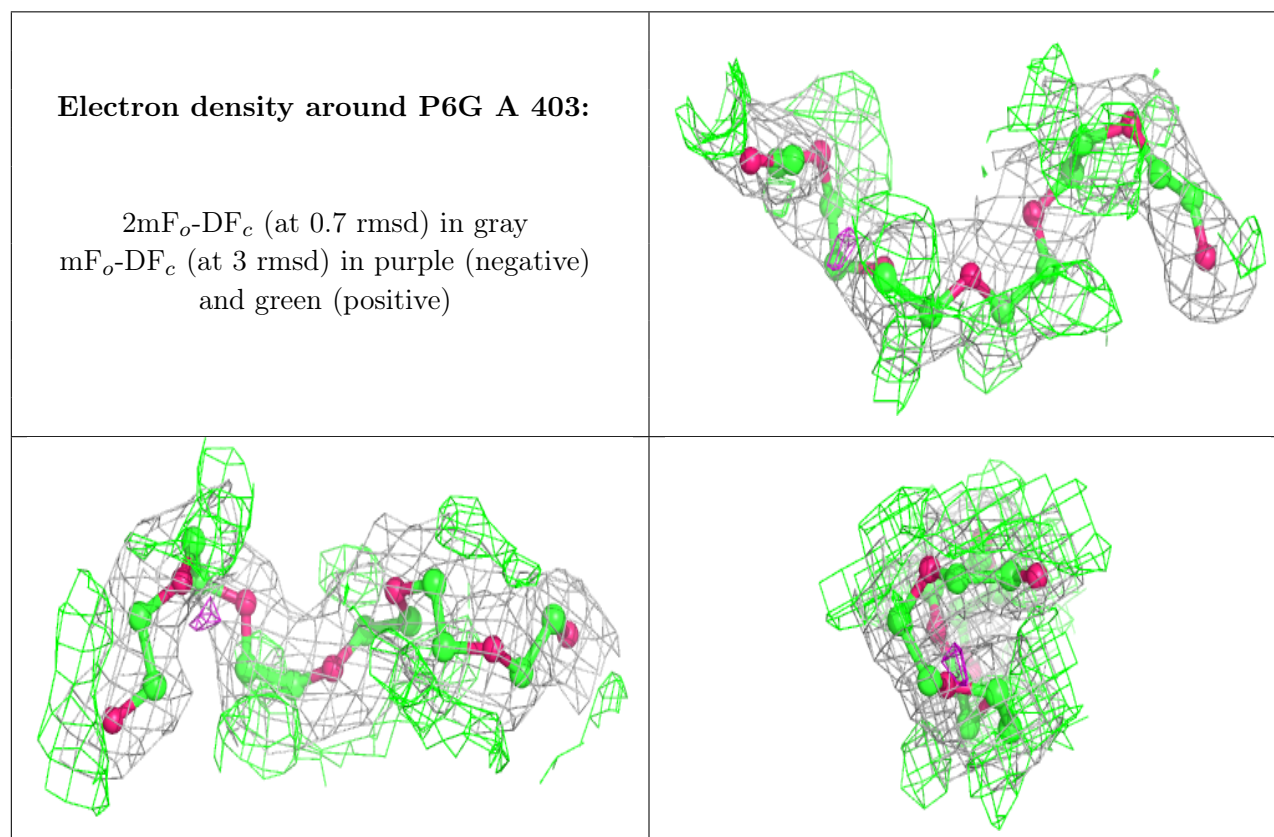


6.4 Ligands [i](#)

In the following table, the Atoms column lists the number of modelled atoms in the group and the number defined in the chemical component dictionary. The B-factors column lists the minimum, median, 95th percentile and maximum values of B factors of atoms in the group. The column labelled 'Q< 0.9' lists the number of atoms with occupancy less than 0.9.

Mol	Type	Chain	Res	Atoms	RSCC	RSR	B-factors(Å ²)	Q<0.9
5	P6G	A	403	19/19	0.76	0.21	36,48,58,74	0
4	NAG	A	402	14/15	0.79	0.23	68,74,78,79	0
4	NAG	B	401	14/15	0.83	0.23	50,59,67,67	0
4	NAG	A	401	14/15	0.92	0.16	40,47,52,53	0

The following is a graphical depiction of the model fit to experimental electron density of all instances of the Ligand of Interest. In addition, ligands with molecular weight > 250 and outliers as shown on the geometry validation Tables will also be included. Each fit is shown from different orientation to approximate a three-dimensional view.



6.5 Other polymers [i](#)

There are no such residues in this entry.