



Full wwPDB X-ray Structure Validation Report ⓘ

May 14, 2020 – 02:50 am BST

PDB ID : 2JIB
Title : X-ray structure of Oxalyl-CoA decarboxylase in complex with coenzyme- A
Authors : Berthold, C.L.; Toyota, C.G.; Moussatche, P.; Wood, M.D.; Leeper, F.;
Richards, N.G.J.; Lindqvist, Y.
Deposited on : 2007-02-26
Resolution : 2.20 Å(reported)

This is a Full wwPDB X-ray Structure Validation Report for a publicly released PDB entry.

We welcome your comments at validation@mail.wwpdb.org

A user guide is available at

<https://www.wwpdb.org/validation/2017/XrayValidationReportHelp>

with specific help available everywhere you see the ⓘ symbol.

The following versions of software and data (see [references ⓘ](#)) were used in the production of this report:

MolProbity : 4.02b-467
Mogul : 1.8.5 (274361), CSD as541be (2020)
Xtriage (Phenix) : 1.13
EDS : 2.11
buster-report : 1.1.7 (2018)
Percentile statistics : 20191225.v01 (using entries in the PDB archive December 25th 2019)
Refmac : 5.8.0158
CCP4 : 7.0.044 (Gargrove)
Ideal geometry (proteins) : Engh & Huber (2001)
Ideal geometry (DNA, RNA) : Parkinson et al. (1996)
Validation Pipeline (wwPDB-VP) : 2.11

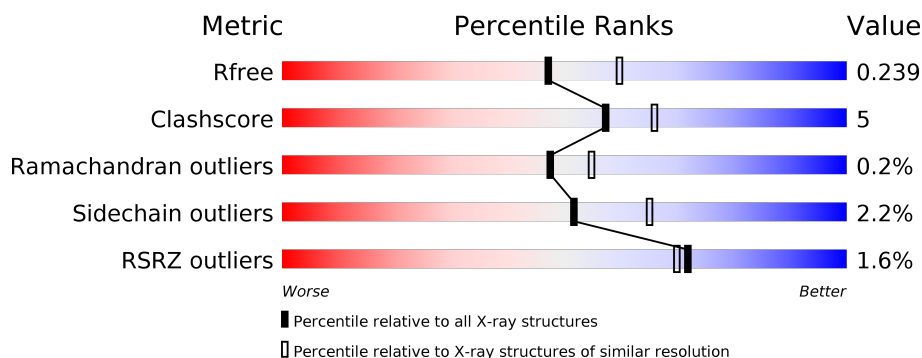
1 Overall quality at a glance

The following experimental techniques were used to determine the structure:

X-RAY DIFFRACTION

The reported resolution of this entry is 2.20 Å.

Percentile scores (ranging between 0-100) for global validation metrics of the entry are shown in the following graphic. The table shows the number of entries on which the scores are based.



Metric	Whole archive (#Entries)	Similar resolution (#Entries, resolution range(Å))
R_{free}	130704	4898 (2.20-2.20)
Clashscore	141614	5594 (2.20-2.20)
Ramachandran outliers	138981	5503 (2.20-2.20)
Sidechain outliers	138945	5504 (2.20-2.20)
RSRZ outliers	127900	4800 (2.20-2.20)

The table below summarises the geometric issues observed across the polymeric chains and their fit to the electron density. The red, orange, yellow and green segments on the lower bar indicate the fraction of residues that contain outliers for ≥ 3 , 2, 1 and 0 types of geometric quality criteria respectively. A grey segment represents the fraction of residues that are not modelled. The numeric value for each fraction is indicated below the corresponding segment, with a dot representing fractions $\leq 5\%$. The upper red bar (where present) indicates the fraction of residues that have poor fit to the electron density. The numeric value is given above the bar.

Mol	Chain	Length	Quality of chain
1	A	568	<div> <div>2%</div> <div> <div></div> <div>86%</div> <div>12%</div> <div></div> </div> <div></div> </div>
1	B	568	<div> <div>2%</div> <div> <div></div> <div>90%</div> <div>8%</div> <div></div> </div> <div></div> </div>

2 Entry composition [i](#)

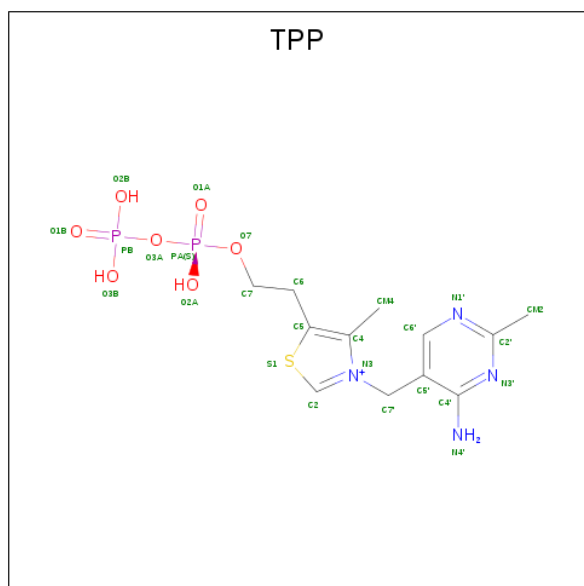
There are 7 unique types of molecules in this entry. The entry contains 9287 atoms, of which 0 are hydrogens and 0 are deuteriums.

In the tables below, the ZeroOcc column contains the number of atoms modelled with zero occupancy, the AltConf column contains the number of residues with at least one atom in alternate conformation and the Trace column contains the number of residues modelled with at most 2 atoms.

- Molecule 1 is a protein called OXALYL-COA DECARBOXYLASE.

Mol	Chain	Residues	Atoms					ZeroOcc	AltConf	Trace
1	A	559	Total	C	N	O	S	0	4	0
			4196	2642	726	792	36			
1	B	559	Total	C	N	O	S	0	5	0
			4201	2646	726	792	37			

- Molecule 2 is THIAMINE DIPHOSPHATE (three-letter code: TPP) (formula: $C_{12}H_{19}N_4O_7P_2S$).



Mol	Chain	Residues	Atoms	ZeroOcc	AltConf
3	B	1	Total Mg 1 1	0	0
3	A	1	Total Mg 1 1	0	0

- Molecule 4 is ADENOSINE-5'-DIPHOSPHATE (three-letter code: ADP) (formula: $C_{10}H_{15}N_5O_{10}P_2$).



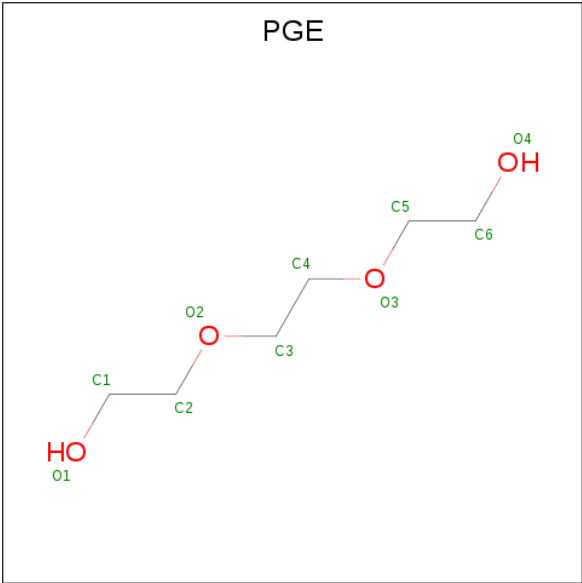
Mol	Chain	Residues	Atoms	ZeroOcc	AltConf
4	A	1	Total C N O P 27 10 5 10 2	0	0
4	B	1	Total C N O P 27 10 5 10 2	0	0

- Molecule 5 is COENZYME A (three-letter code: COA) (formula: $C_{21}H_{36}N_7O_{16}P_3S$).



Mol	Chain	Residues	Atoms						ZeroOcc	AltConf
5	A	1	Total	C	N	O	P	S	0	0
			48	21	7	16	3	1		
5	B	1	Total	C	N	O	P	S	0	0
			48	21	7	16	3	1		

- Molecule 6 is TRIETHYLENE GLYCOL (three-letter code: PGE) (formula: C₆H₁₄O₄).



Mol	Chain	Residues	Atoms			ZeroOcc	AltConf
6	A	1	Total	C	O	0	0
			10	6	4		
6	B	1	Total	C	O	0	0
			10	6	4		

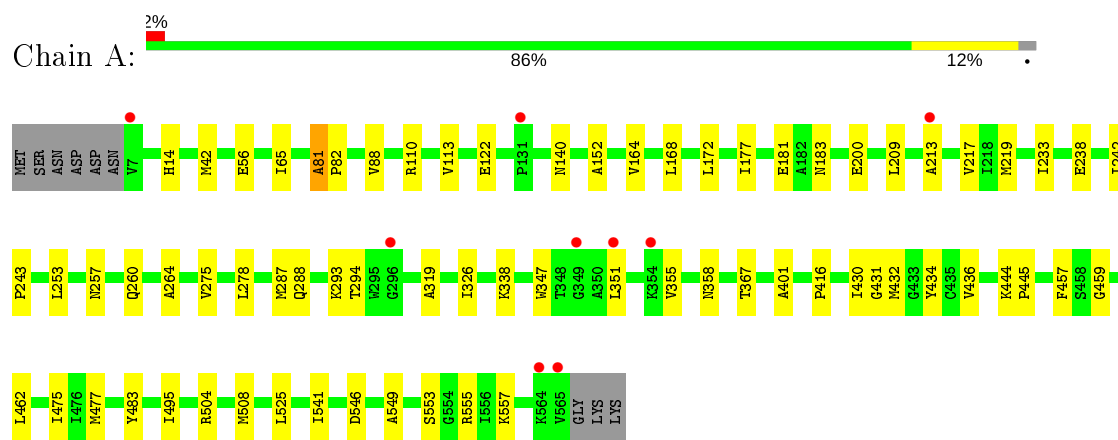
- Molecule 7 is water.

Mol	Chain	Residues	Atoms		ZeroOcc	AltConf
7	A	339	Total 339	O 339	0	0
7	B	327	Total 327	O 327	0	0

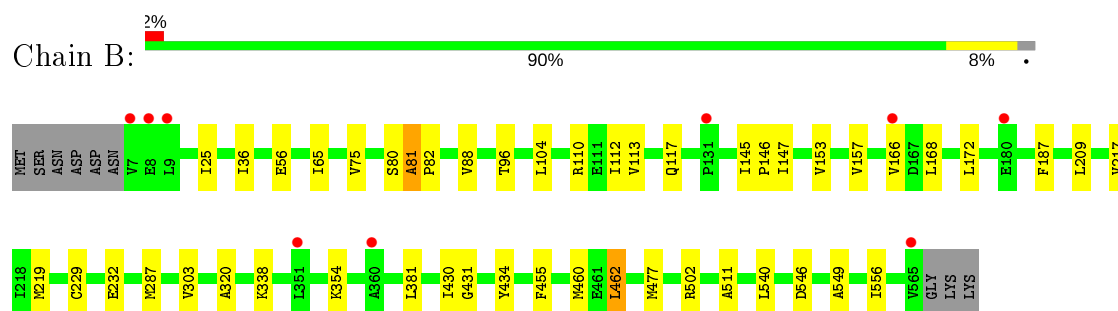
3 Residue-property plots [i](#)

These plots are drawn for all protein, RNA and DNA chains in the entry. The first graphic for a chain summarises the proportions of the various outlier classes displayed in the second graphic. The second graphic shows the sequence view annotated by issues in geometry and electron density. Residues are color-coded according to the number of geometric quality criteria for which they contain at least one outlier: green = 0, yellow = 1, orange = 2 and red = 3 or more. A red dot above a residue indicates a poor fit to the electron density ($RSRZ > 2$). Stretches of 2 or more consecutive residues without any outlier are shown as a green connector. Residues present in the sample, but not in the model, are shown in grey.

• Molecule 1: OXALYL-COA DECARBOXYLASE



• Molecule 1: OXALYL-COA DECARBOXYLASE



4 Data and refinement statistics

Property	Value	Source
Space group	P 31 2 1	Depositor
Cell constants a, b, c, α , β , γ	127.66Å 127.66Å 152.07Å 90.00° 90.00° 120.00°	Depositor
Resolution (Å)	30.00 – 2.20 58.86 – 2.20	Depositor EDS
% Data completeness (in resolution range)	99.0 (30.00-2.20) 98.9 (58.86-2.20)	Depositor EDS
R_{merge}	0.08	Depositor
R_{sym}	(Not available)	Depositor
$\langle I/\sigma(I) \rangle$ ¹	4.14 (at 2.20Å)	Xtriage
Refinement program	REFMAC 5.2.0019	Depositor
R, R_{free}	0.199 , 0.238 0.204 , 0.239	Depositor DCC
R_{free} test set	3439 reflections (4.76%)	wwPDB-VP
Wilson B-factor (Å ²)	24.8	Xtriage
Anisotropy	1.233	Xtriage
Bulk solvent k_{sol} (e/Å ³), B_{sol} (Å ²)	0.32 , 39.8	EDS
L-test for twinning ²	$\langle L \rangle = 0.48$, $\langle L^2 \rangle = 0.31$	Xtriage
Estimated twinning fraction	0.032 for -h,-k,l	Xtriage
F_o, F_c correlation	0.94	EDS
Total number of atoms	9287	wwPDB-VP
Average B, all atoms (Å ²)	33.0	wwPDB-VP

Xtriage's analysis on translational NCS is as follows: *The largest off-origin peak in the Patterson function is 3.43% of the height of the origin peak. No significant pseudotranslation is detected.*

¹Intensities estimated from amplitudes.

²Theoretical values of $\langle |L| \rangle$, $\langle L^2 \rangle$ for acentric reflections are 0.5, 0.333 respectively for untwinned datasets, and 0.375, 0.2 for perfectly twinned datasets.

5 Model quality

5.1 Standard geometry

Bond lengths and bond angles in the following residue types are not validated in this section: COA, MG, PGE, ADP, TPP

The Z score for a bond length (or angle) is the number of standard deviations the observed value is removed from the expected value. A bond length (or angle) with $|Z| > 5$ is considered an outlier worth inspection. RMSZ is the root-mean-square of all Z scores of the bond lengths (or angles).

Mol	Chain	Bond lengths		Bond angles	
		RMSZ	# Z >5	RMSZ	# Z >5
1	A	0.38	0/4282	0.56	0/5796
1	B	0.38	0/4290	0.56	0/5806
All	All	0.38	0/8572	0.56	0/11602

There are no bond length outliers.

There are no bond angle outliers.

There are no chirality outliers.

There are no planarity outliers.

5.2 Too-close contacts

In the following table, the Non-H and H(model) columns list the number of non-hydrogen atoms and hydrogen atoms in the chain respectively. The H(added) column lists the number of hydrogen atoms added and optimized by MolProbity. The Clashes column lists the number of clashes within the asymmetric unit, whereas Symm-Clashes lists symmetry related clashes.

Mol	Chain	Non-H	H(model)	H(added)	Clashes	Symm-Clashes
1	A	4196	0	4243	54	0
1	B	4201	0	4252	35	0
2	A	26	0	16	4	0
2	B	26	0	16	1	0
3	A	1	0	0	0	0
3	B	1	0	0	0	0
4	A	27	0	12	1	0
4	B	27	0	12	0	0
5	A	48	0	32	1	0
5	B	48	0	32	2	0
6	A	10	0	14	0	0

Continued on next page...

Continued from previous page...

Mol	Chain	Non-H	H(model)	H(added)	Clashes	Symm-Clashes
6	B	10	0	14	0	0
7	A	339	0	0	4	0
7	B	327	0	0	1	0
All	All	9287	0	8643	84	0

The all-atom clashscore is defined as the number of clashes found per 1000 atoms (including hydrogen atoms). The all-atom clashscore for this structure is 5.

All (84) close contacts within the same asymmetric unit are listed below, sorted by their clash magnitude.

Atom-1	Atom-2	Interatomic distance (Å)	Clash overlap (Å)
1:B:96:THR:HG23	7:B:2048:HOH:O	1.76	0.84
1:B:556:ILE:HD11	5:B:1569:COA:H22	1.66	0.77
1:B:153:VAL:O	1:B:157:VAL:HG22	1.88	0.71
1:A:288:GLN:HB2	1:A:294:THR:HG21	1.73	0.69
1:B:81:ALA:HB3	1:B:82:PRO:CD	2.23	0.68
2:A:1566:TPP:N1'	1:B:56:GLU:OE2	2.28	0.67
1:A:288:GLN:CB	1:A:294:THR:HG21	2.28	0.64
1:A:65:ILE:HD13	1:A:434:TYR:CZ	2.36	0.61
1:A:183:ASN:ND2	7:A:2127:HOH:O	2.33	0.60
1:A:238:GLU:HA	1:A:260:GLN:HE22	1.66	0.60
1:A:81:ALA:HB3	1:A:82:PRO:CD	2.30	0.60
1:B:455:PHE:HZ	1:B:462:LEU:HD22	1.67	0.58
2:A:1566:TPP:H2	5:A:1569:COA:H21	1.87	0.57
1:B:556:ILE:HD11	5:B:1569:COA:C2P	2.35	0.55
1:B:81:ALA:CB	1:B:82:PRO:CD	2.84	0.55
1:A:508:MET:HE1	1:B:460:MET:HE2	1.89	0.54
1:B:546:ASP:HB3	1:B:549:ALA:HB2	1.90	0.54
1:A:459:GLY:HA3	1:B:460:MET:HE3	1.90	0.52
1:A:288:GLN:HE21	1:A:294:THR:CB	2.23	0.52
1:A:14:HIS:CE1	1:A:42:MET:CE	2.94	0.51
1:A:81:ALA:CB	1:A:82:PRO:CD	2.89	0.51
1:A:140:ASN:ND2	7:A:2108:HOH:O	2.43	0.50
1:A:219[B]:MET:HB2	1:A:278:LEU:HD23	1.92	0.50
1:A:209:LEU:HD11	1:A:319:ALA:HB3	1.92	0.50
1:A:56:GLU:OE2	2:B:1566:TPP:N1'	2.44	0.50
1:A:430:ILE:HD12	1:A:430:ILE:C	2.32	0.49
1:A:457:PHE:CE2	2:A:1566:TPP:HM23	2.47	0.49
1:A:504:ARG:O	1:B:511:ALA:HB1	2.12	0.49
1:A:14:HIS:CE1	1:A:42:MET:HE1	2.48	0.49
1:A:430:ILE:HD12	1:A:431:GLY:N	2.27	0.49

Continued on next page...

Continued from previous page...

Atom-1	Atom-2	Interatomic distance (Å)	Clash overlap (Å)
1:A:288:GLN:HE21	1:A:294:THR:HG21	1.78	0.49
1:B:104:LEU:HD23	1:B:166:VAL:HB	1.94	0.49
1:A:81:ALA:HB3	1:A:82:PRO:HD3	1.94	0.49
1:B:381:LEU:HD21	1:B:477:MET:HE3	1.94	0.49
1:B:81:ALA:HB3	1:B:82:PRO:HD3	1.93	0.49
1:A:177:ILE:HD11	1:A:181:GLU:HG3	1.95	0.48
1:A:264:ALA:HB3	1:A:355:VAL:HG13	1.96	0.48
1:A:219[A]:MET:HG2	1:A:287:MET:HE1	1.94	0.48
1:B:36:ILE:HD12	1:B:36:ILE:C	2.34	0.48
1:A:326:ILE:HG13	4:A:1568:ADP:C2	2.49	0.48
1:B:430:ILE:HD12	1:B:431:GLY:N	2.29	0.47
1:A:65:ILE:HD13	1:A:434:TYR:CE2	2.49	0.47
1:B:229:CYS:HB2	1:B:232:GLU:CG	2.45	0.47
1:A:219[A]:MET:HB3	1:A:278:LEU:HD23	1.96	0.47
1:A:152:ALA:HA	1:A:164:VAL:HG11	1.97	0.47
1:B:219[A]:MET:HG2	1:B:287:MET:HE1	1.97	0.47
1:A:401:ALA:HB3	2:A:1566:TPP:O1B	2.16	0.46
1:A:430:ILE:HD13	1:A:434:TYR:CD2	2.50	0.46
1:A:546:ASP:HB3	1:A:549:ALA:HB2	1.98	0.46
1:B:81:ALA:HB3	1:B:82:PRO:HD2	1.98	0.45
1:B:147:ILE:HD13	1:B:187:PHE:CZ	2.52	0.45
1:B:112:ILE:HG23	1:B:117:GLN:HB2	1.98	0.45
1:A:475:ILE:HG22	1:A:477:MET:CE	2.47	0.45
1:A:288:GLN:NE2	1:A:294:THR:OG1	2.50	0.45
1:A:213:ALA:HB2	1:A:275:VAL:HG21	1.98	0.45
1:A:459:GLY:CA	1:B:460:MET:HE3	2.47	0.45
1:B:25:ILE:HG21	1:B:75:VAL:HG21	1.99	0.45
1:A:351:LEU:O	1:A:355:VAL:HG23	2.17	0.44
1:B:209:LEU:HD12	1:B:303:VAL:HG22	1.99	0.44
1:A:459:GLY:HA3	1:B:460:MET:CE	2.47	0.44
1:A:242:ILE:HG22	1:A:243:PRO:O	2.18	0.44
1:A:14:HIS:NE2	1:A:42:MET:HE3	2.34	0.43
1:A:233:ILE:HD13	1:A:253:LEU:HD21	2.00	0.43
1:A:253:LEU:HA	1:A:416:PRO:HB3	2.00	0.43
1:A:200:GLU:HG2	7:A:2055:HOH:O	2.18	0.43
1:A:444:LYS:HB3	1:A:445:PRO:CD	2.49	0.43
1:A:168:LEU:HD22	1:A:172:LEU:HD23	2.00	0.42
1:B:145:ILE:HB	1:B:146:PRO:HD3	2.02	0.41
1:B:168:LEU:HD22	1:B:172:LEU:CD2	2.49	0.41
1:B:462:LEU:HD21	1:B:540:LEU:CD1	2.50	0.41
1:A:113:VAL:HG22	1:A:122:GLU:HG3	2.02	0.41

Continued on next page...

Continued from previous page...

Atom-1	Atom-2	Interatomic distance (Å)	Clash overlap (Å)
1:A:288:GLN:HE21	1:A:294:THR:CG2	2.33	0.41
1:A:525:LEU:HD12	1:A:541:ILE:HG21	2.02	0.41
1:A:432:MET:O	1:A:436:VAL:HG23	2.21	0.41
1:A:475:ILE:CG2	1:A:477:MET:HE3	2.52	0.40
1:A:483:TYR:CE2	1:A:553:SER:HA	2.56	0.40
1:B:65:ILE:HG21	1:B:434:TYR:HA	2.03	0.40
1:A:347:TRP:CZ2	1:A:351:LEU:HD11	2.57	0.40
1:B:65:ILE:HD12	1:B:65:ILE:HA	1.93	0.40
1:A:495:ILE:HG22	7:A:2294:HOH:O	2.21	0.40
1:A:508:MET:HE1	1:B:460:MET:CE	2.51	0.40
1:B:168:LEU:HD22	1:B:172:LEU:HD23	2.04	0.40
1:B:303:VAL:HG22	1:B:320:ALA:HB3	2.04	0.40

There are no symmetry-related clashes.

5.3 Torsion angles ⓘ

5.3.1 Protein backbone ⓘ

In the following table, the Percentiles column shows the percent Ramachandran outliers of the chain as a percentile score with respect to all X-ray entries followed by that with respect to entries of similar resolution.

The Analysed column shows the number of residues for which the backbone conformation was analysed, and the total number of residues.

Mol	Chain	Analysed	Favoured	Allowed	Outliers	Percentiles	
1	A	561/568 (99%)	545 (97%)	15 (3%)	1 (0%)	47	55
1	B	562/568 (99%)	539 (96%)	22 (4%)	1 (0%)	47	55
All	All	1123/1136 (99%)	1084 (96%)	37 (3%)	2 (0%)	47	55

All (2) Ramachandran outliers are listed below:

Mol	Chain	Res	Type
1	A	81	ALA
1	B	81	ALA

5.3.2 Protein sidechains ⓘ

In the following table, the Percentiles column shows the percent sidechain outliers of the chain as a percentile score with respect to all X-ray entries followed by that with respect to entries of similar resolution.

The Analysed column shows the number of residues for which the sidechain conformation was analysed, and the total number of residues.

Mol	Chain	Analysed	Rotameric	Outliers	Percentiles	
1	A	441/445 (99%)	430 (98%)	11 (2%)	47	60
1	B	442/445 (99%)	434 (98%)	8 (2%)	59	72
All	All	883/890 (99%)	864 (98%)	19 (2%)	52	65

All (19) residues with a non-rotameric sidechain are listed below:

Mol	Chain	Res	Type
1	A	88	VAL
1	A	110	ARG
1	A	217	VAL
1	A	257	ASN
1	A	293	LYS
1	A	338	LYS
1	A	358	ASN
1	A	367	THR
1	A	462	LEU
1	A	555	ARG
1	A	557	LYS
1	B	80	SER
1	B	88	VAL
1	B	110	ARG
1	B	217	VAL
1	B	338	LYS
1	B	354	LYS
1	B	462	LEU
1	B	502	ARG

Some sidechains can be flipped to improve hydrogen bonding and reduce clashes. All (8) such sidechains are listed below:

Mol	Chain	Res	Type
1	A	140	ASN
1	A	183	ASN
1	A	228	GLN

Continued on next page...

Continued from previous page...

Mol	Chain	Res	Type
1	A	257	ASN
1	A	260	GLN
1	A	288	GLN
1	A	358	ASN
1	B	116	GLN

5.3.3 RNA ⓘ

There are no RNA molecules in this entry.

5.4 Non-standard residues in protein, DNA, RNA chains ⓘ

There are no non-standard protein/DNA/RNA residues in this entry.

5.5 Carbohydrates ⓘ

There are no carbohydrates in this entry.

5.6 Ligand geometry ⓘ

Of 10 ligands modelled in this entry, 2 are monoatomic - leaving 8 for Mogul analysis.

In the following table, the Counts columns list the number of bonds (or angles) for which Mogul statistics could be retrieved, the number of bonds (or angles) that are observed in the model and the number of bonds (or angles) that are defined in the Chemical Component Dictionary. The Link column lists molecule types, if any, to which the group is linked. The Z score for a bond length (or angle) is the number of standard deviations the observed value is removed from the expected value. A bond length (or angle) with $|Z| > 2$ is considered an outlier worth inspection. RMSZ is the root-mean-square of all Z scores of the bond lengths (or angles).

Mol	Type	Chain	Res	Link	Bond lengths			Bond angles		
					Counts	RMSZ	$\# Z > 2$	Counts	RMSZ	$\# Z > 2$
5	COA	A	1569	-	41,50,50	1.76	3 (7%)	52,75,75	1.02	2 (3%)
5	COA	B	1569	-	41,50,50	1.76	3 (7%)	52,75,75	0.99	1 (1%)
4	ADP	A	1568	-	24,29,29	0.87	1 (4%)	29,45,45	1.37	5 (17%)
2	TPP	A	1566	3	22,27,27	1.52	5 (22%)	29,40,40	1.66	10 (34%)
4	ADP	B	1568	-	24,29,29	0.99	1 (4%)	29,45,45	1.37	4 (13%)
6	PGE	A	1570	-	9,9,9	0.52	0	8,8,8	0.17	0
6	PGE	B	1570	-	9,9,9	0.55	0	8,8,8	0.28	0
2	TPP	B	1566	3	22,27,27	1.60	4 (18%)	29,40,40	1.62	7 (24%)

In the following table, the Chirals column lists the number of chiral outliers, the number of chiral centers analysed, the number of these observed in the model and the number defined in the Chemical Component Dictionary. Similar counts are reported in the Torsion and Rings columns. '-' means no outliers of that kind were identified.

Mol	Type	Chain	Res	Link	Chirals	Torsions	Rings
5	COA	A	1569	-	-	7/44/64/64	0/3/3/3
5	COA	B	1569	-	-	5/44/64/64	0/3/3/3
4	ADP	A	1568	-	-	2/12/32/32	0/3/3/3
2	TPP	A	1566	3	-	4/16/17/17	0/2/2/2
4	ADP	B	1568	-	-	2/12/32/32	0/3/3/3
6	PGE	A	1570	-	-	3/7/7/7	-
6	PGE	B	1570	-	-	4/7/7/7	-
2	TPP	B	1566	3	-	4/16/17/17	0/2/2/2

All (17) bond length outliers are listed below:

Mol	Chain	Res	Type	Atoms	Z	Observed(Å)	Ideal(Å)
5	A	1569	COA	O9P-C9P	9.38	1.42	1.23
5	B	1569	COA	O9P-C9P	9.29	1.41	1.23
5	B	1569	COA	C2A-N3A	4.31	1.39	1.32
5	A	1569	COA	C2A-N3A	4.27	1.39	1.32
2	A	1566	TPP	C4-N3	-4.07	1.36	1.39
2	B	1566	TPP	C4-N3	-4.06	1.36	1.39
2	B	1566	TPP	C4'-N3'	3.04	1.39	1.35
5	B	1569	COA	C2A-N1A	2.81	1.39	1.33
2	B	1566	TPP	C2'-N3'	2.70	1.38	1.34
5	A	1569	COA	C2A-N1A	2.70	1.38	1.33
2	A	1566	TPP	C4'-N3'	2.66	1.38	1.35
4	B	1568	ADP	C5-C4	2.57	1.47	1.40
2	A	1566	TPP	C2'-N3'	2.45	1.38	1.34
2	B	1566	TPP	C2'-N1'	2.32	1.38	1.34
2	A	1566	TPP	C2'-N1'	2.28	1.38	1.34
4	A	1568	ADP	C5-C4	2.26	1.46	1.40
2	A	1566	TPP	C7'-N3	-2.12	1.44	1.48

All (29) bond angle outliers are listed below:

Mol	Chain	Res	Type	Atoms	Z	Observed(°)	Ideal(°)
5	B	1569	COA	N3A-C2A-N1A	-5.57	119.97	128.68
5	A	1569	COA	N3A-C2A-N1A	-5.32	120.36	128.68
4	A	1568	ADP	N3-C2-N1	-3.87	122.63	128.68
4	B	1568	ADP	C4-C5-N7	-3.28	105.98	109.40

Continued on next page...

Continued from previous page...

Mol	Chain	Res	Type	Atoms	Z	Observed(°)	Ideal(°)
2	B	1566	TPP	N1'-C2'-N3'	-3.27	119.91	125.54
4	B	1568	ADP	N3-C2-N1	-3.26	123.59	128.68
2	A	1566	TPP	N1'-C2'-N3'	-2.90	120.55	125.54
2	B	1566	TPP	C6-C5-C4	2.87	129.74	127.43
2	A	1566	TPP	CM4-C4-N3	2.72	126.00	122.53
2	A	1566	TPP	C6'-C5'-C4'	2.67	119.35	115.72
2	A	1566	TPP	C6-C5-C4	2.67	129.57	127.43
2	B	1566	TPP	C6'-N1'-C2'	2.65	120.47	115.96
2	B	1566	TPP	CM2-C2'-N3'	2.59	121.19	117.15
2	A	1566	TPP	PA-O3A-PB	-2.59	123.95	132.83
2	A	1566	TPP	C5'-C7'-N3	-2.50	109.11	113.28
2	A	1566	TPP	C6'-N1'-C2'	2.47	120.17	115.96
2	B	1566	TPP	PA-O3A-PB	-2.47	124.35	132.83
4	A	1568	ADP	PA-O3A-PB	-2.46	124.37	132.83
4	B	1568	ADP	C1'-N9-C4	-2.44	122.35	126.64
2	A	1566	TPP	CM2-C2'-N3'	2.39	120.88	117.15
2	B	1566	TPP	C6'-C5'-C4'	2.32	118.88	115.72
4	A	1568	ADP	C4-C5-N7	-2.30	107.00	109.40
4	A	1568	ADP	C1'-N9-C4	-2.28	122.64	126.64
5	A	1569	COA	P2A-O3A-P1A	-2.22	125.20	132.83
2	B	1566	TPP	CM4-C4-N3	2.22	125.36	122.53
2	A	1566	TPP	O3B-PB-O3A	2.17	111.92	104.64
2	A	1566	TPP	C5'-C6'-N1'	-2.16	120.22	123.82
4	A	1568	ADP	O3B-PB-O2B	2.01	115.32	107.64
4	B	1568	ADP	C2-N1-C6	2.00	122.18	118.75

There are no chirality outliers.

All (31) torsion outliers are listed below:

Mol	Chain	Res	Type	Atoms
5	B	1569	COA	C6P-C5P-N4P-C3P
5	B	1569	COA	S1P-C2P-C3P-N4P
2	A	1566	TPP	C4-C5-C6-C7
2	A	1566	TPP	PA-O3A-PB-O3B
5	A	1569	COA	C3B-O3B-P3B-O7A
2	B	1566	TPP	C4-C5-C6-C7
2	B	1566	TPP	PA-O3A-PB-O3B
5	B	1569	COA	O5P-C5P-N4P-C3P
4	B	1568	ADP	O4'-C4'-C5'-O5'
4	A	1568	ADP	O4'-C4'-C5'-O5'
5	A	1569	COA	O5P-C5P-N4P-C3P
5	A	1569	COA	C6P-C5P-N4P-C3P

Continued on next page...

Continued from previous page...

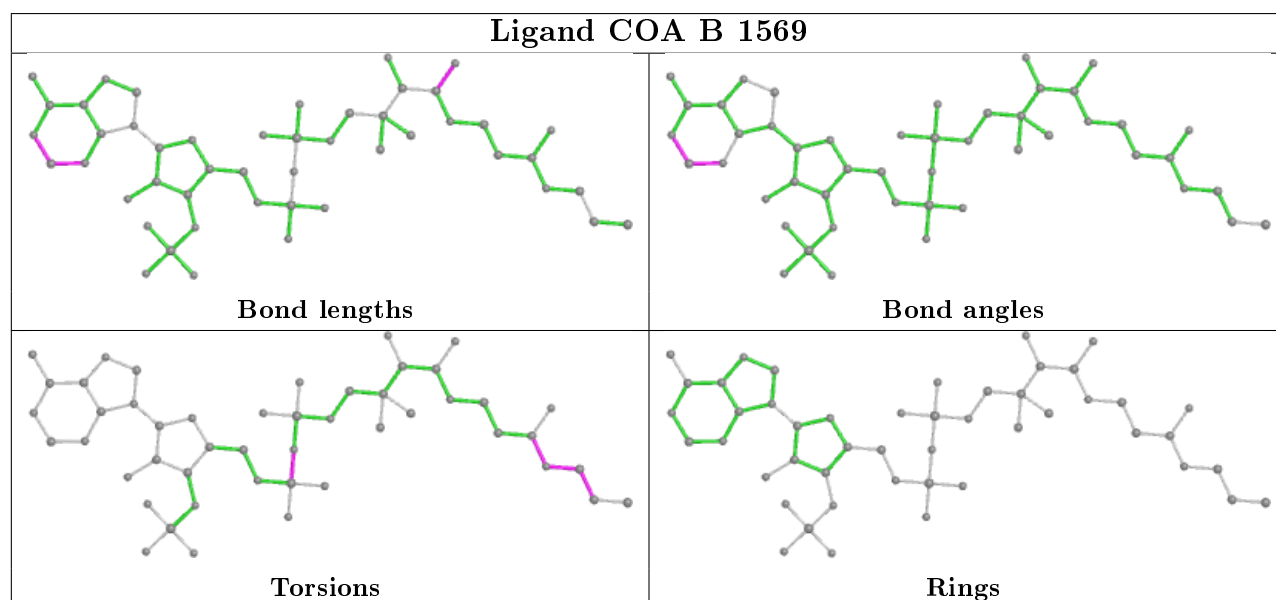
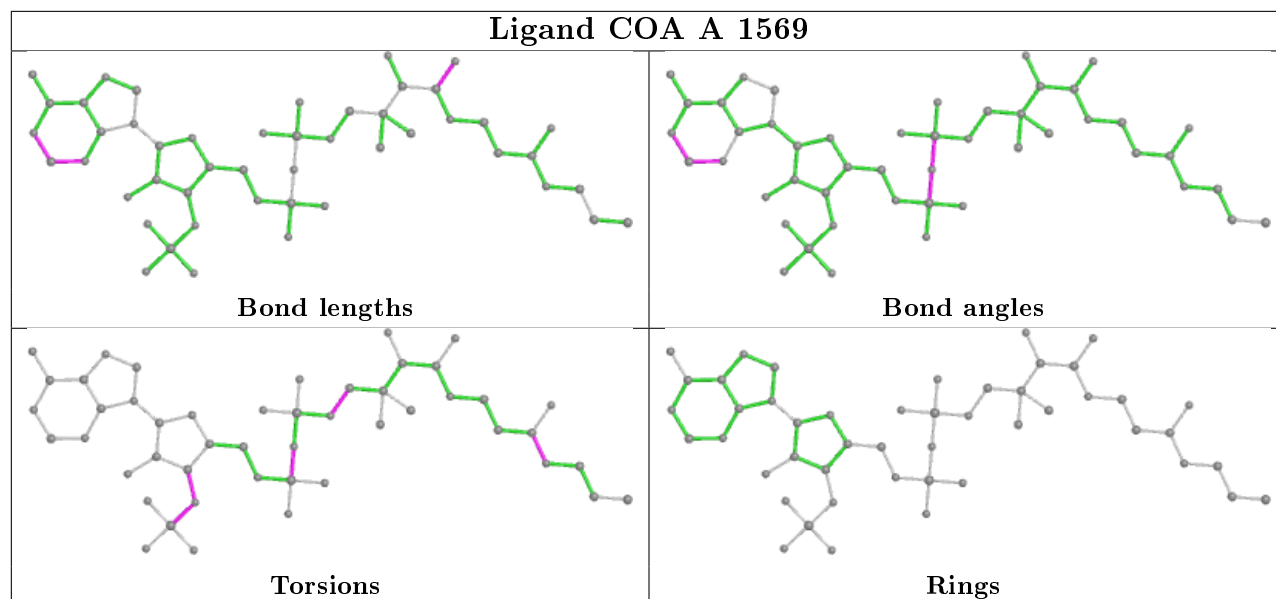
Mol	Chain	Res	Type	Atoms
4	B	1568	ADP	C3'-C4'-C5'-O5'
4	A	1568	ADP	C3'-C4'-C5'-O5'
6	B	1570	PGE	O3-C5-C6-O4
6	B	1570	PGE	O2-C3-C4-O3
6	A	1570	PGE	O1-C1-C2-O2
5	A	1569	COA	C2B-C3B-O3B-P3B
6	B	1570	PGE	C1-C2-O2-C3
5	A	1569	COA	P2A-O3A-P1A-O1A
6	A	1570	PGE	O3-C5-C6-O4
5	B	1569	COA	P2A-O3A-P1A-O1A
6	B	1570	PGE	C3-C4-O3-C5
2	A	1566	TPP	PA-O3A-PB-O1B
2	B	1566	TPP	PA-O3A-PB-O1B
5	B	1569	COA	C2P-C3P-N4P-C5P
2	A	1566	TPP	PA-O3A-PB-O2B
2	B	1566	TPP	PA-O3A-PB-O2B
5	A	1569	COA	C4B-C3B-O3B-P3B
6	A	1570	PGE	O2-C3-C4-O3
5	A	1569	COA	CBP-CCP-O6A-P2A

There are no ring outliers.

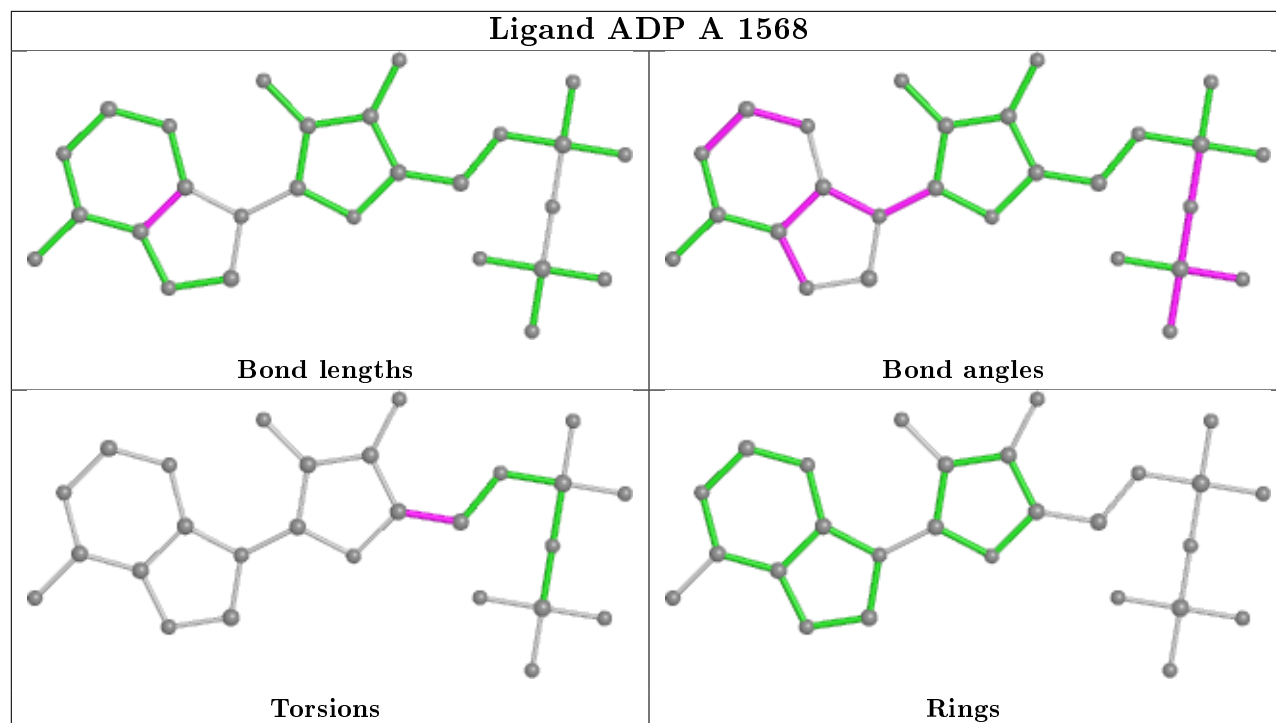
5 monomers are involved in 8 short contacts:

Mol	Chain	Res	Type	Clashes	Symm-Clashes
5	A	1569	COA	1	0
5	B	1569	COA	2	0
4	A	1568	ADP	1	0
2	A	1566	TPP	4	0
2	B	1566	TPP	1	0

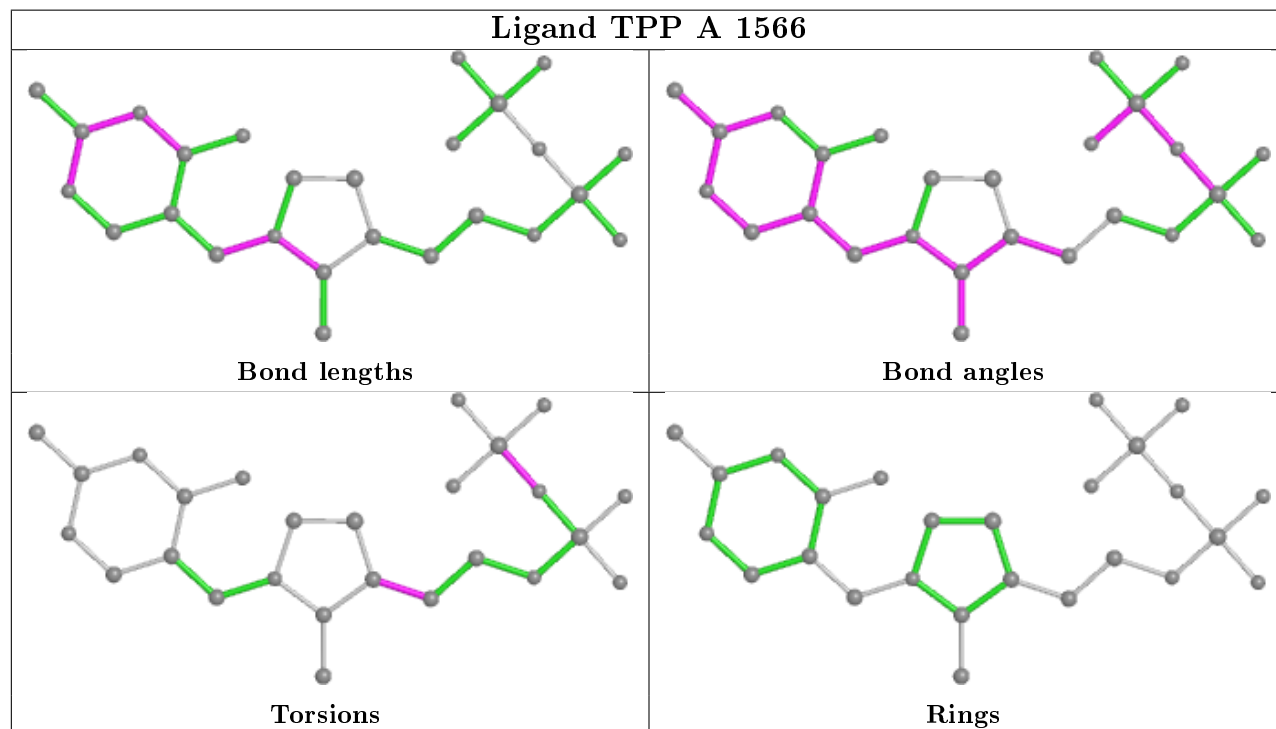
The following is a two-dimensional graphical depiction of Mogul quality analysis of bond lengths, bond angles, torsion angles, and ring geometry for all instances of the Ligand of Interest. In addition, ligands with molecular weight > 250 and outliers as shown on the validation Tables will also be included. For torsion angles, if less than 5% of the Mogul distribution of torsion angles is within 10 degrees of the torsion angle in question, then that torsion angle is considered an outlier. Any bond that is central to one or more torsion angles identified as an outlier by Mogul will be highlighted in the graph. For rings, the root-mean-square deviation (RMSD) between the ring in question and similar rings identified by Mogul is calculated over all ring torsion angles. If the average RMSD is greater than 60 degrees and the minimal RMSD between the ring in question and any Mogul-identified rings is also greater than 60 degrees, then that ring is considered an outlier. The outliers are highlighted in purple. The color gray indicates Mogul did not find sufficient equivalents in the CSD to analyse the geometry.

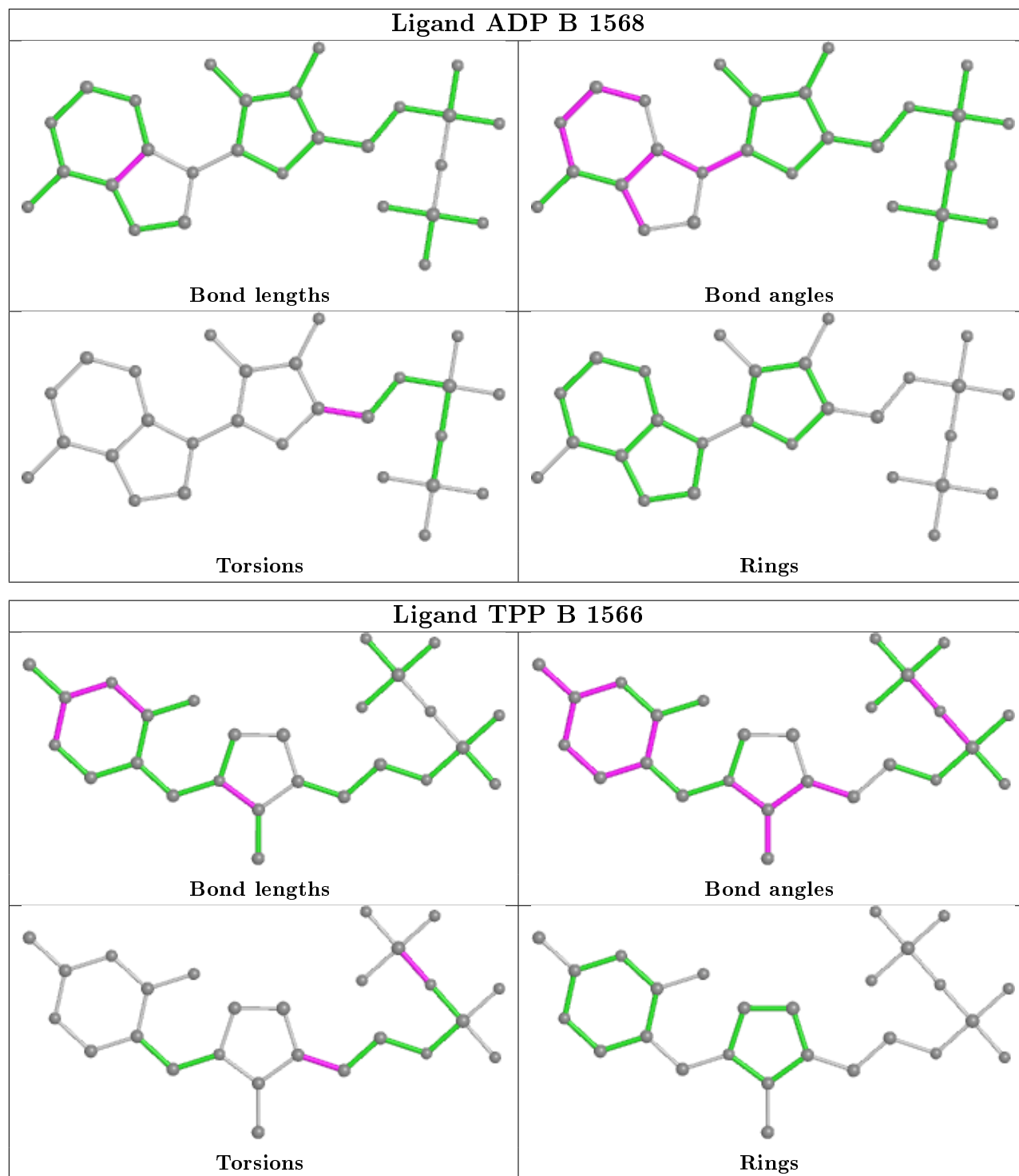


Ligand ADP A 1568



Ligand TPP A 1566





5.7 Other polymers ⓘ

There are no such residues in this entry.

5.8 Polymer linkage issues

There are no chain breaks in this entry.

6 Fit of model and data [i](#)

6.1 Protein, DNA and RNA chains [i](#)

In the following table, the column labelled ‘#RSRZ> 2’ contains the number (and percentage) of RSRZ outliers, followed by percent RSRZ outliers for the chain as percentile scores relative to all X-ray entries and entries of similar resolution. The OWAB column contains the minimum, median, 95th percentile and maximum values of the occupancy-weighted average B-factor per residue. The column labelled ‘Q< 0.9’ lists the number of (and percentage) of residues with an average occupancy less than 0.9.

Mol	Chain	Analysed	<RSRZ>	#RSRZ>2	OWAB(Å ²)	Q<0.9
1	A	559/568 (98%)	0.05	9 (1%) 72 70	28, 33, 37, 41	0
1	B	559/568 (98%)	0.00	9 (1%) 72 70	28, 33, 37, 40	0
All	All	1118/1136 (98%)	0.03	18 (1%) 72 70	28, 33, 37, 41	0

All (18) RSRZ outliers are listed below:

Mol	Chain	Res	Type	RSRZ
1	B	7	VAL	6.2
1	A	7	VAL	3.5
1	A	296	GLY	3.4
1	A	564	LYS	2.9
1	A	351	LEU	2.8
1	B	8	GLU	2.6
1	A	349	GLY	2.5
1	B	565	VAL	2.4
1	A	213	ALA	2.3
1	A	565	VAL	2.2
1	B	166	VAL	2.1
1	B	180	GLU	2.1
1	A	131	PRO	2.1
1	B	131	PRO	2.1
1	B	351	LEU	2.1
1	A	354	LYS	2.0
1	B	9	LEU	2.0
1	B	360	ALA	2.0

6.2 Non-standard residues in protein, DNA, RNA chains [i](#)

There are no non-standard protein/DNA/RNA residues in this entry.

6.3 Carbohydrates

There are no carbohydrates in this entry.

6.4 Ligands

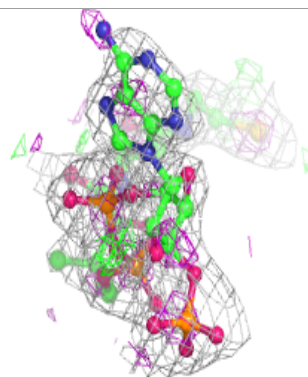
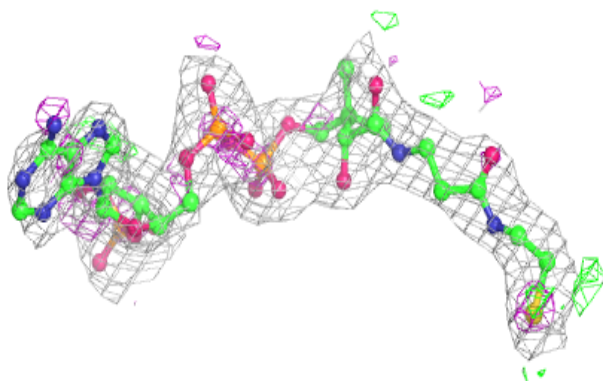
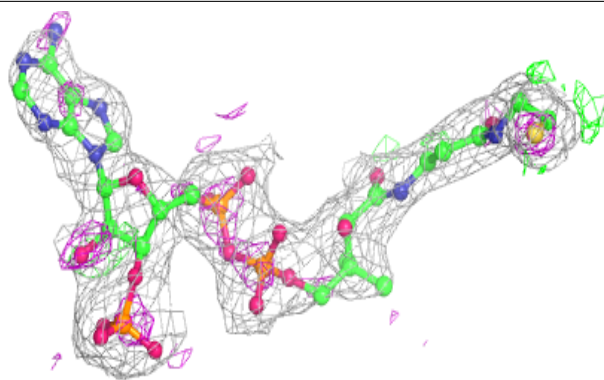
In the following table, the Atoms column lists the number of modelled atoms in the group and the number defined in the chemical component dictionary. The B-factors column lists the minimum, median, 95th percentile and maximum values of B factors of atoms in the group. The column labelled 'Q< 0.9' lists the number of atoms with occupancy less than 0.9.

Mol	Type	Chain	Res	Atoms	RSCC	RSR	B-factors(\AA^2)	Q<0.9
6	PGE	A	1570	10/10	0.81	0.21	52,53,54,55	0
6	PGE	B	1570	10/10	0.83	0.18	52,52,54,54	0
5	COA	A	1569	48/48	0.89	0.25	42,53,58,58	0
5	COA	B	1569	48/48	0.92	0.24	35,46,51,51	0
2	TPP	A	1566	26/26	0.96	0.11	26,31,32,33	0
4	ADP	B	1568	27/27	0.96	0.08	27,28,30,30	0
4	ADP	A	1568	27/27	0.96	0.09	26,27,30,30	0
3	MG	B	1567	1/1	0.96	0.07	23,23,23,23	0
2	TPP	B	1566	26/26	0.96	0.12	27,31,32,34	0
3	MG	A	1567	1/1	0.97	0.04	28,28,28,28	0

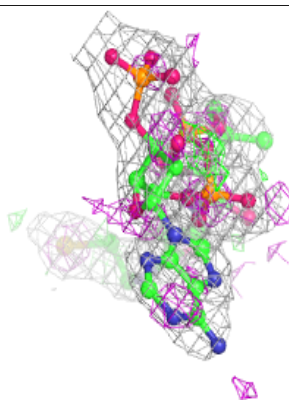
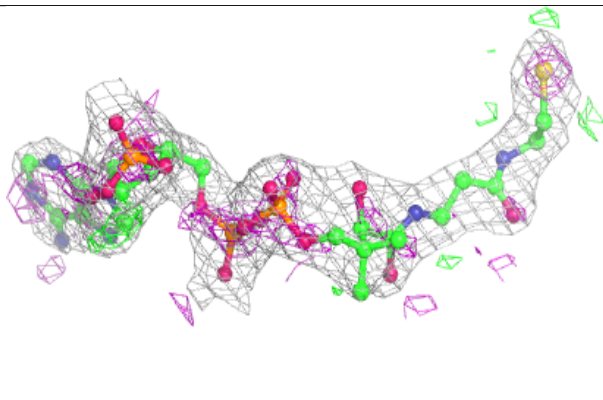
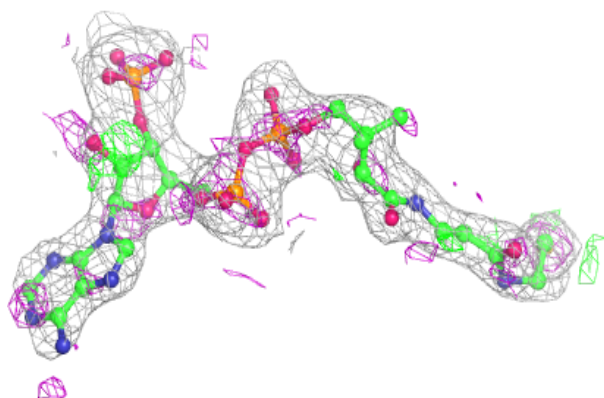
The following is a graphical depiction of the model fit to experimental electron density of all instances of the Ligand of Interest. In addition, ligands with molecular weight > 250 and outliers as shown on the geometry validation Tables will also be included. Each fit is shown from different orientation to approximate a three-dimensional view.

Electron density around COA A 1569:

$2mF_o-DF_c$ (at 0.7 rmsd) in gray
 mF_o-DF_c (at 3 rmsd) in purple (negative)
and green (positive)

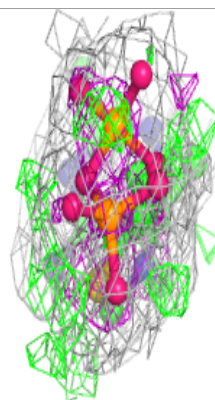
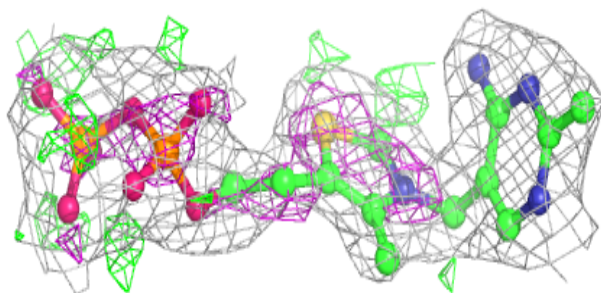
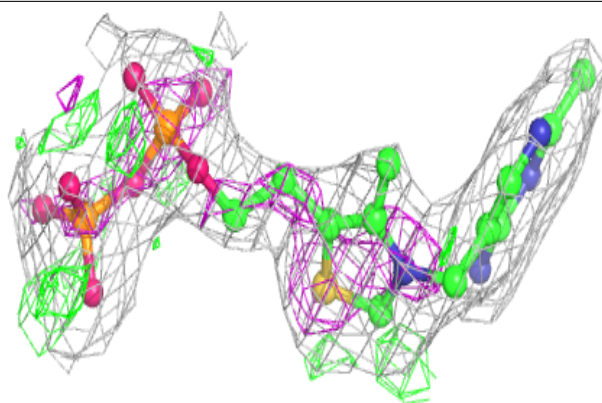
**Electron density around COA B 1569:**

$2mF_o-DF_c$ (at 0.7 rmsd) in gray
 mF_o-DF_c (at 3 rmsd) in purple (negative)
and green (positive)

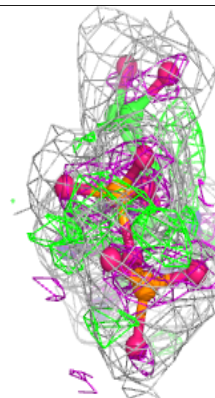
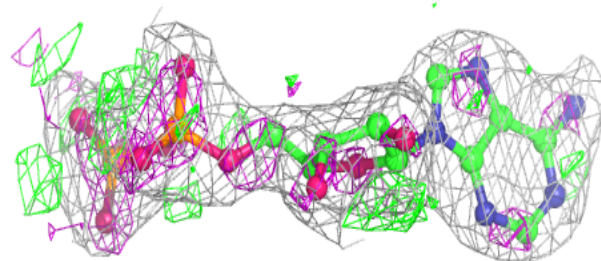
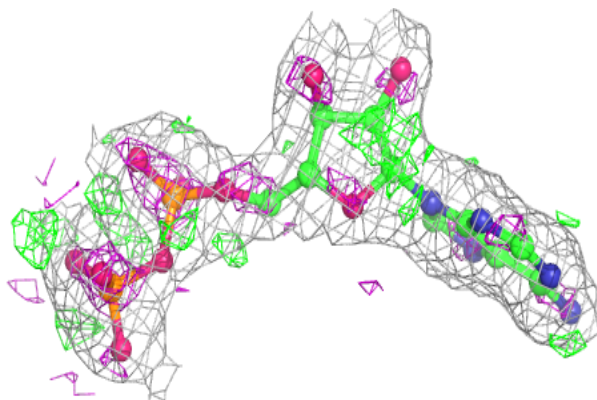


Electron density around TPP A 1566:

$2mF_o-DF_c$ (at 0.7 rmsd) in gray
 mF_o-DF_c (at 3 rmsd) in purple (negative)
and green (positive)

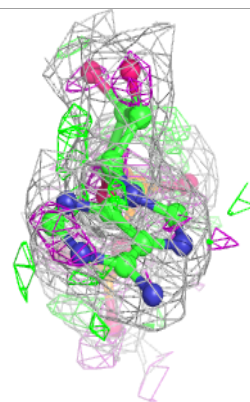
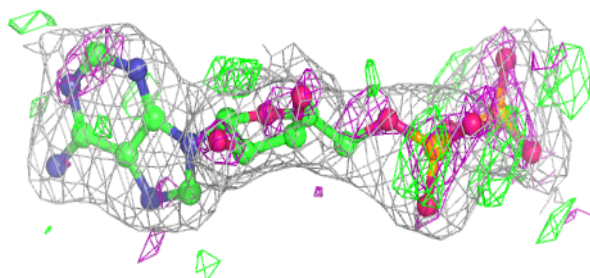
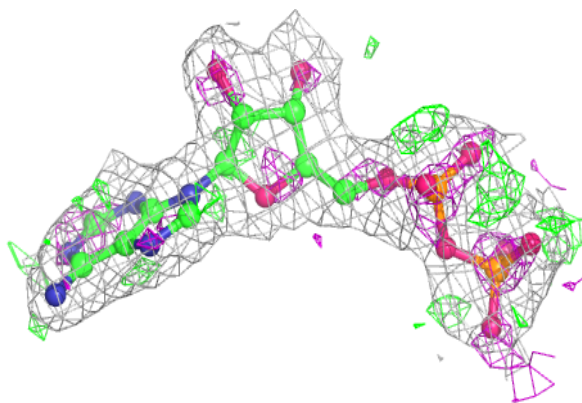
**Electron density around ADP B 1568:**

$2mF_o-DF_c$ (at 0.7 rmsd) in gray
 mF_o-DF_c (at 3 rmsd) in purple (negative)
and green (positive)

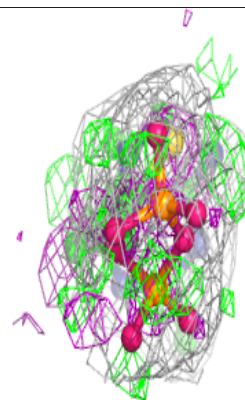
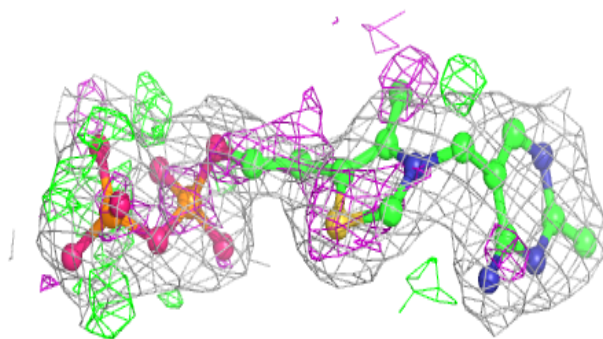
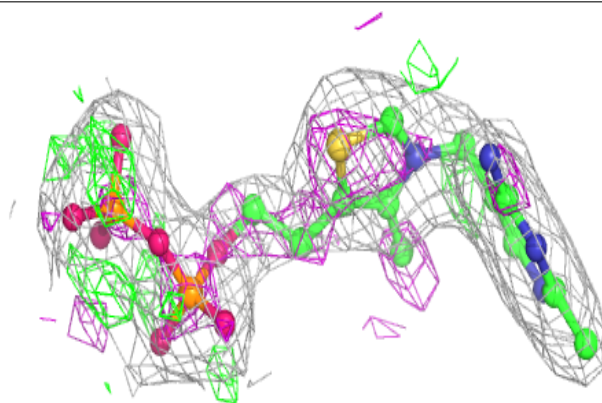


Electron density around ADP A 1568:

$2mF_o-DF_c$ (at 0.7 rmsd) in gray
 mF_o-DF_c (at 3 rmsd) in purple (negative)
and green (positive)

**Electron density around TPP B 1566:**

$2mF_o-DF_c$ (at 0.7 rmsd) in gray
 mF_o-DF_c (at 3 rmsd) in purple (negative)
and green (positive)



6.5 Other polymers

There are no such residues in this entry.