



Full wwPDB X-ray Structure Validation Report ⓘ

May 15, 2020 – 11:26 pm BST

PDB ID : 2JIF
Title : Structure of human short-branched chain acyl-CoA dehydrogenase (ACADSB)
Authors : Pike, A.C.W.; Hozjan, V.; Smee, C.; Niesen, F.H.; Kavanagh, K.L.; Umeano, C.; Turnbull, A.P.; von Delft, F.; Weigelt, J.; Edwards, A.; Arrowsmith, C.H.; Sundstrom, M.; Oppermann, U.
Deposited on : 2007-02-28
Resolution : 2.00 Å(reported)

This is a Full wwPDB X-ray Structure Validation Report for a publicly released PDB entry.

We welcome your comments at validation@mail.wwpdb.org

A user guide is available at

<https://www.wwpdb.org/validation/2017/XrayValidationReportHelp>

with specific help available everywhere you see the ⓘ symbol.

The following versions of software and data (see [references ⓘ](#)) were used in the production of this report:

MolProbity : 4.02b-467
Mogul : 1.8.5 (274361), CSD as541be (2020)
Xtriage (Phenix) : 1.13
EDS : 2.11
buster-report : 1.1.7 (2018)
Percentile statistics : 20191225.v01 (using entries in the PDB archive December 25th 2019)
Refmac : 5.8.0158
CCP4 : 7.0.044 (Gargrove)
Ideal geometry (proteins) : Engh & Huber (2001)
Ideal geometry (DNA, RNA) : Parkinson et al. (1996)
Validation Pipeline (wwPDB-VP) : 2.11

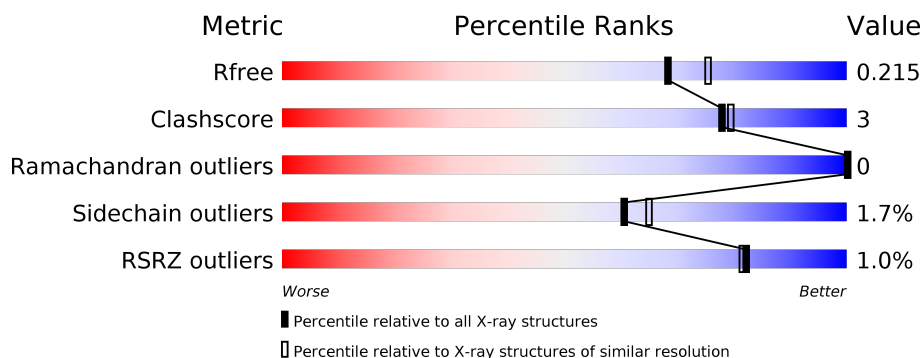
1 Overall quality at a glance

The following experimental techniques were used to determine the structure:

X-RAY DIFFRACTION

The reported resolution of this entry is 2.00 Å.

Percentile scores (ranging between 0-100) for global validation metrics of the entry are shown in the following graphic. The table shows the number of entries on which the scores are based.



Metric	Whole archive (#Entries)	Similar resolution (#Entries, resolution range(Å))
R_{free}	130704	8085 (2.00-2.00)
Clashscore	141614	9178 (2.00-2.00)
Ramachandran outliers	138981	9054 (2.00-2.00)
Sidechain outliers	138945	9053 (2.00-2.00)
RSRZ outliers	127900	7900 (2.00-2.00)

The table below summarises the geometric issues observed across the polymeric chains and their fit to the electron density. The red, orange, yellow and green segments on the lower bar indicate the fraction of residues that contain outliers for ≥ 3 , 2, 1 and 0 types of geometric quality criteria respectively. A grey segment represents the fraction of residues that are not modelled. The numeric value for each fraction is indicated below the corresponding segment, with a dot representing fractions $\leq 5\%$. The upper red bar (where present) indicates the fraction of residues that have poor fit to the electron density. The numeric value is given above the bar.

Mol	Chain	Length	Quality of chain
1	A	404	<div> <div>%</div> <div> <div></div> <div>85%</div> <div>9%</div> <div>6%</div> </div> </div>
1	B	404	<div> <div>%</div> <div> <div></div> <div>85%</div> <div>8%</div> <div>7%</div> </div> </div>
1	C	404	<div> <div></div> <div> <div>87%</div> <div>6%</div> <div>7%</div> </div> </div>
1	D	404	<div> <div>%</div> <div> <div></div> <div>89%</div> <div>5%</div> <div>6%</div> </div> </div>

2 Entry composition ⓘ

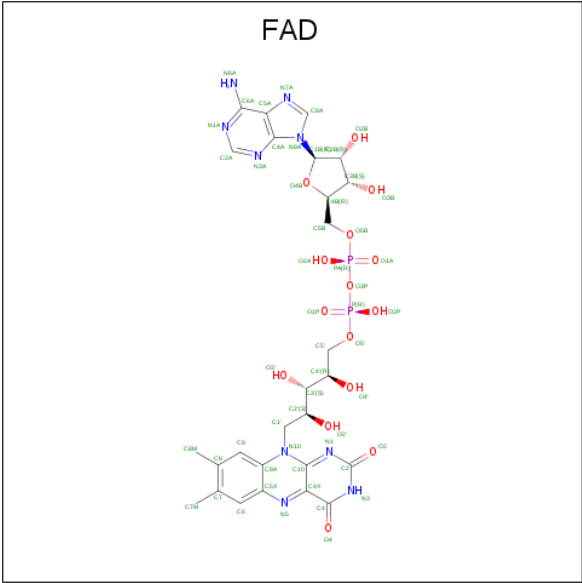
There are 6 unique types of molecules in this entry. The entry contains 13144 atoms, of which 0 are hydrogens and 0 are deuteriums.

In the tables below, the ZeroOcc column contains the number of atoms modelled with zero occupancy, the AltConf column contains the number of residues with at least one atom in alternate conformation and the Trace column contains the number of residues modelled with at most 2 atoms.

- Molecule 1 is a protein called SHORT/BRANCHED CHAIN SPECIFIC ACYL-COA DE-HYDROGENASE.

Mol	Chain	Residues	Atoms					ZeroOcc	AltConf	Trace
1	A	381	Total	C	N	O	S	0	7	0
			2940	1878	483	564	15			
1	B	377	Total	C	N	O	S	0	7	0
			2913	1858	481	559	15			
1	C	377	Total	C	N	O	S	0	12	0
			2952	1878	492	566	16			
1	D	381	Total	C	N	O	S	0	12	0
			2980	1903	488	573	16			

- Molecule 2 is FLAVIN-ADENINE DINUCLEOTIDE (three-letter code: FAD) (formula: C₂₇H₃₃N₉O₁₅P₂).



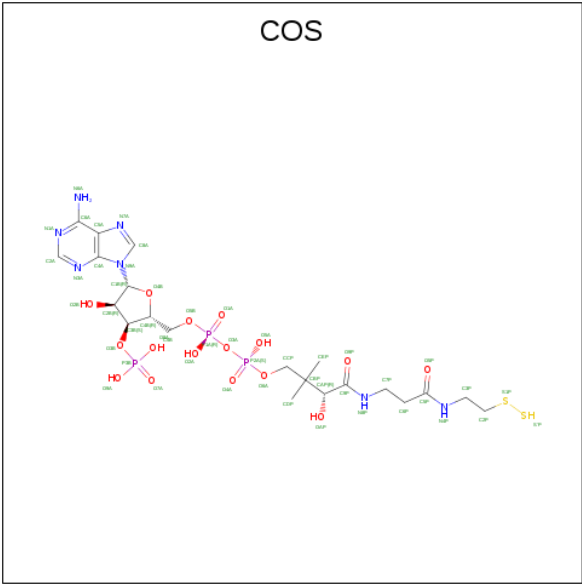
Mol	Chain	Residues	Atoms					ZeroOcc	AltConf
2	A	1	Total	C	N	O	P	0	0
			53	27	9	15	2		

Continued on next page...

Continued from previous page...

Mol	Chain	Residues	Atoms					ZeroOcc	AltConf
2	B	1	Total	C	N	O	P	0	0
			53	27	9	15	2		
2	C	1	Total	C	N	O	P	0	0
			53	27	9	15	2		
2	D	1	Total	C	N	O	P	0	0
			53	27	9	15	2		

- Molecule 3 is COENZYME A PERSULFIDE (three-letter code: COS) (formula: C₂₁H₃₆N₇O₁₆P₃S₂).



Mol	Chain	Residues	Atoms						ZeroOcc	AltConf
3	A	1	Total	C	N	O	P	S	0	0
			49	21	7	16	3	2		
3	B	1	Total	C	N	O	P	S	0	0
			49	21	7	16	3	2		
3	C	1	Total	C	N	O	P	S	0	0
			49	21	7	16	3	2		
3	D	1	Total	C	N	O	P	S	0	0
			49	21	7	16	3	2		

- Molecule 4 is 1,2-ETHANEDIOL (three-letter code: EDO) (formula: C₂H₆O₂).



Mol	Chain	Residues	Atoms	ZeroOcc	AltConf
4	A	1	Total C O 4 2 2	0	0
4	B	1	Total C O 4 2 2	0	0
4	C	1	Total C O 4 2 2	0	0
4	D	1	Total C O 4 2 2	0	0
4	D	1	Total C O 4 2 2	0	0
4	D	1	Total C O 4 2 2	0	0
4	D	1	Total C O 4 2 2	0	0

- Molecule 5 is CHLORIDE ION (three-letter code: CL) (formula: Cl).

Mol	Chain	Residues	Atoms	ZeroOcc	AltConf
5	B	3	Total Cl 3 3	0	0
5	A	2	Total Cl 2 2	0	0
5	D	3	Total Cl 3 3	0	0
5	C	2	Total Cl 2 2	0	0

- Molecule 6 is water.

Mol	Chain	Residues	Atoms		ZeroOcc	AltConf
6	A	204	Total 204	O 204	0	0
6	B	204	Total 204	O 204	0	0
6	C	236	Total 236	O 236	0	0
6	D	269	Total 269	O 269	0	0

- Molecule 1: SHORT/BRANCHED CHAIN SPECIFIC ACYL-COA DEHYDROGENASE





4 Data and refinement statistics

Property	Value	Source
Space group	P 31 2 1	Depositor
Cell constants a, b, c, α , β , γ	150.25Å 150.25Å 201.59Å 90.00° 90.00° 120.00°	Depositor
Resolution (Å)	70.00 – 2.00 65.06 – 2.00	Depositor EDS
% Data completeness (in resolution range)	99.3 (70.00-2.00) 99.3 (65.06-2.00)	Depositor EDS
R_{merge}	0.10	Depositor
R_{sym}	(Not available)	Depositor
$\langle I/\sigma(I) \rangle$ ¹	2.10 (at 2.00Å)	Xtriage
Refinement program	REFMAC 5.2.0019	Depositor
R, R_{free}	0.184 , 0.209 0.191 , 0.215	Depositor DCC
R_{free} test set	8809 reflections (5.01%)	wwPDB-VP
Wilson B-factor (Å ²)	25.9	Xtriage
Anisotropy	0.023	Xtriage
Bulk solvent k_{sol} (e/Å ³), B_{sol} (Å ²)	0.34 , 49.2	EDS
L-test for twinning ²	$\langle L \rangle = 0.49$, $\langle L^2 \rangle = 0.32$	Xtriage
Estimated twinning fraction	0.059 for -h,-k,l	Xtriage
F_o, F_c correlation	0.94	EDS
Total number of atoms	13144	wwPDB-VP
Average B, all atoms (Å ²)	29.0	wwPDB-VP

Xtriage's analysis on translational NCS is as follows: *The largest off-origin peak in the Patterson function is 3.09% of the height of the origin peak. No significant pseudotranslation is detected.*

¹Intensities estimated from amplitudes.

²Theoretical values of $\langle |L| \rangle$, $\langle L^2 \rangle$ for acentric reflections are 0.5, 0.333 respectively for untwinned datasets, and 0.375, 0.2 for perfectly twinned datasets.

5 Model quality [i](#)

5.1 Standard geometry [i](#)

Bond lengths and bond angles in the following residue types are not validated in this section: COS, EDO, FAD, CL

The Z score for a bond length (or angle) is the number of standard deviations the observed value is removed from the expected value. A bond length (or angle) with $|Z| > 5$ is considered an outlier worth inspection. RMSZ is the root-mean-square of all Z scores of the bond lengths (or angles).

Mol	Chain	Bond lengths		Bond angles	
		RMSZ	$\# Z > 5$	RMSZ	$\# Z > 5$
1	A	0.52	0/3024	0.59	0/4088
1	B	0.51	1/2997 (0.0%)	0.62	2/4048 (0.0%)
1	C	0.56	0/3067	0.63	0/4135
1	D	0.56	0/3088	0.65	0/4168
All	All	0.54	1/12176 (0.0%)	0.62	2/16439 (0.0%)

All (1) bond length outliers are listed below:

Mol	Chain	Res	Type	Atoms	Z	Observed(Å)	Ideal(Å)
1	B	197	ASP	CG-OD2	5.54	1.38	1.25

All (2) bond angle outliers are listed below:

Mol	Chain	Res	Type	Atoms	Z	Observed(°)	Ideal(°)
1	B	304	LEU	CA-CB-CG	5.77	128.58	115.30
1	B	197	ASP	CB-CG-OD2	-5.44	113.41	118.30

There are no chirality outliers.

There are no planarity outliers.

5.2 Too-close contacts [i](#)

In the following table, the Non-H and H(model) columns list the number of non-hydrogen atoms and hydrogen atoms in the chain respectively. The H(added) column lists the number of hydrogen atoms added and optimized by MolProbity. The Clashes column lists the number of clashes within the asymmetric unit, whereas Symm-Clashes lists symmetry related clashes.

Mol	Chain	Non-H	H(model)	H(added)	Clashes	Symm-Clashes
1	A	2940	0	2907	22	0

Continued on next page...

Continued from previous page...

Mol	Chain	Non-H	H(model)	H(added)	Clashes	Symm-Clashes
1	B	2913	0	2891	20	0
1	C	2952	0	2950	16	0
1	D	2980	0	2973	13	0
2	A	53	0	31	3	0
2	B	53	0	31	1	0
2	C	53	0	31	2	0
2	D	53	0	31	1	0
3	A	49	0	32	4	0
3	B	49	0	32	1	0
3	C	49	0	32	3	0
3	D	49	0	32	3	0
4	A	4	0	6	0	0
4	B	4	0	6	0	0
4	C	4	0	6	0	0
4	D	16	0	24	0	0
5	A	2	0	0	0	0
5	B	3	0	0	0	0
5	C	2	0	0	0	0
5	D	3	0	0	0	0
6	A	204	0	0	1	0
6	B	204	0	0	2	0
6	C	236	0	0	3	0
6	D	269	0	0	2	0
All	All	13144	0	12015	71	0

The all-atom clashscore is defined as the number of clashes found per 1000 atoms (including hydrogen atoms). The all-atom clashscore for this structure is 3.

All (71) close contacts within the same asymmetric unit are listed below, sorted by their clash magnitude.

Atom-1	Atom-2	Interatomic distance (Å)	Clash overlap (Å)
1:B:409:ILE:HD11	2:B:1433:FAD:HM83	1.81	0.61
1:D:60:GLU:OE1	6:D:2003:HOH:O	2.17	0.60
1:A:68:VAL:HG21	1:A:124:VAL:HG22	1.83	0.60
1:C:99[B]:GLN:NE2	6:C:2041:HOH:O	2.35	0.58
1:D:413:TYR:HB2	3:D:1434:COS:S'P	2.44	0.57
2:D:1433:FAD:O2'	3:D:1434:COS:S'P	2.50	0.57
1:B:297:ILE:HG13	1:B:414:GLU:HG3	1.85	0.57
1:B:199:TYR:CE2	1:B:275:ILE:HD11	2.40	0.57
1:D:406:ASP:O	1:D:409:ILE:HG22	2.05	0.55
1:B:176:LEU:HD13	1:B:220:MET:HG3	1.89	0.54

Continued on next page...

Continued from previous page...

Atom-1	Atom-2	Interatomic distance (Å)	Clash overlap (Å)
1:C:428[B]:ILE:HD11	6:C:2193:HOH:O	2.09	0.53
1:A:386:ILE:HG22	1:C:412:ILE:HD11	1.89	0.53
1:A:304:LEU:HD11	1:A:407:ALA:HB2	1.92	0.52
1:D:304:LEU:HD11	1:D:407:ALA:HB2	1.91	0.52
2:C:1433:FAD:O2'	3:C:1434:COS:H32	2.09	0.51
1:C:194:LYS:NZ	1:C:196:GLY:O	2.42	0.51
1:A:54:LEU:HD12	1:A:348:LEU:HD22	1.92	0.51
1:C:409:ILE:HD11	2:C:1433:FAD:HM83	1.93	0.51
1:C:297:ILE:HG13	1:C:414:GLU:HG3	1.93	0.50
1:B:198:TYR:HE1	1:B:200:VAL:HG22	1.75	0.50
2:A:1433:FAD:O2'	3:A:1434:COS:S'P	2.51	0.50
1:B:412:ILE:HD11	1:D:386:ILE:HG22	1.93	0.50
1:B:406:ASP:O	1:B:409:ILE:HG22	2.12	0.50
2:A:1433:FAD:O2'	3:A:1434:COS:H32	2.13	0.48
1:A:320:ILE:HD13	1:A:325:ARG:HA	1.95	0.48
1:A:175:CYS:HA	1:A:208:ILE:HD12	1.95	0.48
1:B:122:VAL:HG13	1:B:299:ALA:HB2	1.96	0.48
1:D:414:GLU:HA	3:D:1434:COS:H31	1.96	0.48
1:A:163:LEU:O	1:A:167:THR:HG23	2.14	0.47
1:A:357:LEU:HD23	1:A:357:LEU:C	2.34	0.47
1:D:54:LEU:HD12	1:D:355:ARG:HE	1.77	0.47
1:A:428[A]:ILE:HD11	6:A:2152:HOH:O	2.15	0.47
1:C:246:ILE:HG13	1:C:263:LEU:HD22	1.98	0.46
1:A:270:VAL:HG12	1:A:274:ASN:HB2	1.97	0.46
1:C:426:LYS:NZ	6:C:2221:HOH:O	2.48	0.46
1:B:120:SER:O	1:B:124:VAL:HG23	2.16	0.46
1:B:327:PHE:O	1:B:333:GLN:HG3	2.16	0.46
1:B:342:GLN:HB3	1:B:377[B]:ILE:HG13	1.97	0.45
1:C:389:MET:HG3	1:C:400[B]:VAL:HG21	1.99	0.45
1:A:413:TYR:HB2	3:A:1434:COS:S'P	2.57	0.45
1:A:414:GLU:HA	3:A:1434:COS:H31	1.98	0.44
1:C:406:ASP:O	1:C:409:ILE:HG22	2.17	0.44
1:B:409:ILE:HB	1:D:394:TYR:CZ	2.54	0.43
1:C:414:GLU:HA	3:C:1434:COS:H31	2.00	0.43
1:B:386:ILE:HG12	1:B:400[A]:VAL:HG12	2.00	0.43
1:C:357:LEU:C	1:C:357:LEU:HD23	2.38	0.43
1:D:122:VAL:HG13	1:D:299:ALA:HB2	2.00	0.43
1:A:54:LEU:O	1:A:355:ARG:NH2	2.51	0.43
1:B:175:CYS:HA	1:B:208:ILE:HD12	2.00	0.43
1:A:149:LEU:HD13	1:A:218:LEU:HD23	2.00	0.43
1:B:226:THR:HG23	6:B:2084:HOH:O	2.19	0.43

Continued on next page...

Continued from previous page...

Atom-1	Atom-2	Interatomic distance (Å)	Clash overlap (Å)
1:A:308:CYS:SG	1:A:400[A]:VAL:HG13	2.59	0.42
1:A:327:PHE:O	1:A:333:GLN:HG3	2.19	0.42
1:A:406:ASP:O	1:A:409:ILE:HG22	2.19	0.42
1:C:178:GLU:HG2	1:C:205:LYS:HD3	2.02	0.42
1:D:428[A]:ILE:HD11	6:D:2220:HOH:O	2.19	0.42
1:A:385:CYS:O	1:A:389:MET:HG2	2.20	0.41
1:A:409:ILE:HD11	2:A:1433:FAD:HM83	2.02	0.41
1:D:163:LEU:O	1:D:167:THR:HG23	2.21	0.41
1:B:255:LEU:HG	1:B:409:ILE:HG21	2.03	0.41
1:C:413:TYR:HB2	3:C:1434:COS:S'P	2.61	0.41
1:D:357:LEU:HD23	1:D:357:LEU:C	2.41	0.41
1:B:198:TYR:CE1	1:B:200:VAL:HG22	2.55	0.41
1:D:117:SER:HB2	1:D:358:GLU:OE2	2.20	0.41
1:B:287:ILE:HD13	3:B:1434:COS:H141	2.03	0.41
1:A:412:ILE:HD11	1:C:386:ILE:HG22	2.03	0.41
1:A:77:ALA:HB3	1:A:78:PRO:HD3	2.04	0.41
1:B:328:ASP:OD2	6:B:2132:HOH:O	2.22	0.41
1:C:324:LYS:HD2	1:C:329:PHE:CE1	2.56	0.40
1:A:122:VAL:HG13	1:A:299:ALA:HB2	2.03	0.40
1:B:68:VAL:HG21	1:B:124:VAL:HG22	2.03	0.40

There are no symmetry-related clashes.

5.3 Torsion angles [i](#)

5.3.1 Protein backbone [i](#)

In the following table, the Percentiles column shows the percent Ramachandran outliers of the chain as a percentile score with respect to all X-ray entries followed by that with respect to entries of similar resolution.

The Analysed column shows the number of residues for which the backbone conformation was analysed, and the total number of residues.

Mol	Chain	Analysed	Favoured	Allowed	Outliers	Percentiles	
1	A	386/404 (96%)	380 (98%)	6 (2%)	0	100	100
1	B	382/404 (95%)	374 (98%)	8 (2%)	0	100	100
1	C	388/404 (96%)	380 (98%)	8 (2%)	0	100	100
1	D	391/404 (97%)	385 (98%)	6 (2%)	0	100	100
All	All	1547/1616 (96%)	1519 (98%)	28 (2%)	0	100	100

There are no Ramachandran outliers to report.

5.3.2 Protein sidechains ⓘ

In the following table, the Percentiles column shows the percent sidechain outliers of the chain as a percentile score with respect to all X-ray entries followed by that with respect to entries of similar resolution.

The Analysed column shows the number of residues for which the sidechain conformation was analysed, and the total number of residues.

Mol	Chain	Analysed	Rotameric	Outliers	Percentiles	
1	A	308/331 (93%)	303 (98%)	5 (2%)	62	67
1	B	306/331 (92%)	300 (98%)	6 (2%)	55	58
1	C	317/331 (96%)	312 (98%)	5 (2%)	62	67
1	D	319/331 (96%)	313 (98%)	6 (2%)	57	61
All	All	1250/1324 (94%)	1228 (98%)	22 (2%)	60	63

All (22) residues with a non-rotameric sidechain are listed below:

Mol	Chain	Res	Type
1	A	55	GLN
1	A	304	LEU
1	A	319	ARG
1	A	408	LYS
1	A	413	TYR
1	B	169	GLU
1	B	249	PRO
1	B	255	LEU
1	B	319	ARG
1	B	408	LYS
1	B	413	TYR
1	C	266[A]	GLU
1	C	266[B]	GLU
1	C	319	ARG
1	C	408	LYS
1	C	413	TYR
1	D	54	LEU
1	D	304	LEU
1	D	319	ARG
1	D	333	GLN
1	D	408	LYS
1	D	413	TYR

Some sidechains can be flipped to improve hydrogen bonding and reduce clashes. All (2) such sidechains are listed below:

Mol	Chain	Res	Type
1	C	100	GLN
1	D	86	ASN

5.3.3 RNA [i](#)

There are no RNA molecules in this entry.

5.4 Non-standard residues in protein, DNA, RNA chains [i](#)

There are no non-standard protein/DNA/RNA residues in this entry.

5.5 Carbohydrates [i](#)

There are no carbohydrates in this entry.

5.6 Ligand geometry [i](#)

Of 25 ligands modelled in this entry, 10 are monoatomic - leaving 15 for Mogul analysis.

In the following table, the Counts columns list the number of bonds (or angles) for which Mogul statistics could be retrieved, the number of bonds (or angles) that are observed in the model and the number of bonds (or angles) that are defined in the Chemical Component Dictionary. The Link column lists molecule types, if any, to which the group is linked. The Z score for a bond length (or angle) is the number of standard deviations the observed value is removed from the expected value. A bond length (or angle) with $|Z| > 2$ is considered an outlier worth inspection. RMSZ is the root-mean-square of all Z scores of the bond lengths (or angles).

Mol	Type	Chain	Res	Link	Bond lengths			Bond angles		
					Counts	RMSZ	$\# Z > 2$	Counts	RMSZ	$\# Z > 2$
3	COS	C	1434	-	42,51,51	1.35	5 (11%)	54,76,76	1.10	3 (5%)
4	EDO	D	1436	-	3,3,3	0.40	0	2,2,2	0.04	0
2	FAD	D	1433	-	51,58,58	1.20	4 (7%)	60,89,89	1.91	11 (18%)
4	EDO	D	1438	-	3,3,3	0.54	0	2,2,2	0.08	0
4	EDO	D	1435	-	3,3,3	0.48	0	2,2,2	0.37	0
4	EDO	B	1435	-	3,3,3	0.61	0	2,2,2	0.15	0
4	EDO	A	1435	-	3,3,3	0.54	0	2,2,2	0.21	0
2	FAD	C	1433	-	51,58,58	1.29	6 (11%)	60,89,89	1.89	12 (20%)
4	EDO	C	1435	-	3,3,3	0.56	0	2,2,2	0.14	0

Mol	Type	Chain	Res	Link	Bond lengths			Bond angles		
					Counts	RMSZ	# Z > 2	Counts	RMSZ	# Z > 2
2	FAD	A	1433	-	51,58,58	1.39	4 (7%)	60,89,89	1.76	13 (21%)
3	COS	B	1434	-	42,51,51	1.50	5 (11%)	54,76,76	1.11	4 (7%)
4	EDO	D	1437	-	3,3,3	0.49	0	2,2,2	0.17	0
3	COS	D	1434	-	42,51,51	1.41	6 (14%)	54,76,76	1.21	3 (5%)
2	FAD	B	1433	-	51,58,58	1.41	7 (13%)	60,89,89	1.77	11 (18%)
3	COS	A	1434	-	42,51,51	1.38	4 (9%)	54,76,76	1.22	4 (7%)

In the following table, the Chirals column lists the number of chiral outliers, the number of chiral centers analysed, the number of these observed in the model and the number defined in the Chemical Component Dictionary. Similar counts are reported in the Torsion and Rings columns. '-' means no outliers of that kind were identified.

Mol	Type	Chain	Res	Link	Chirals	Torsions	Rings
3	COS	C	1434	-	-	4/44/65/65	0/3/3/3
4	EDO	D	1436	-	-	0/1/1/1	-
2	FAD	D	1433	-	-	4/30/50/50	0/6/6/6
4	EDO	D	1438	-	-	1/1/1/1	-
4	EDO	D	1435	-	-	0/1/1/1	-
4	EDO	B	1435	-	-	0/1/1/1	-
4	EDO	A	1435	-	-	0/1/1/1	-
2	FAD	C	1433	-	-	1/30/50/50	0/6/6/6
4	EDO	C	1435	-	-	0/1/1/1	-
2	FAD	A	1433	-	-	1/30/50/50	0/6/6/6
3	COS	B	1434	-	-	5/44/65/65	0/3/3/3
4	EDO	D	1437	-	-	0/1/1/1	-
3	COS	D	1434	-	-	6/44/65/65	0/3/3/3
2	FAD	B	1433	-	-	1/30/50/50	0/6/6/6
3	COS	A	1434	-	-	3/44/65/65	0/3/3/3

All (41) bond length outliers are listed below:

Mol	Chain	Res	Type	Atoms	Z	Observed(Å)	Ideal(Å)
2	A	1433	FAD	C10-N1	6.09	1.41	1.33
2	B	1433	FAD	C10-N1	5.56	1.40	1.33
3	B	1434	COS	O4B-C1B	5.17	1.48	1.41
3	D	1434	COS	O4B-C1B	4.37	1.47	1.41
2	C	1433	FAD	C10-N1	4.29	1.38	1.33
3	B	1434	COS	P3B-O7A	4.04	1.63	1.50
2	D	1433	FAD	C10-N1	4.04	1.38	1.33
2	A	1433	FAD	C4-N3	4.00	1.40	1.33

Continued on next page...

Continued from previous page...

Mol	Chain	Res	Type	Atoms	Z	Observed(Å)	Ideal(Å)
3	A	1434	COS	P1A-O1A	3.96	1.64	1.50
3	A	1434	COS	O4B-C1B	3.90	1.46	1.41
3	C	1434	COS	O4B-C1B	3.84	1.46	1.41
3	C	1434	COS	P1A-O1A	3.78	1.64	1.50
3	A	1434	COS	P3B-O7A	3.78	1.62	1.50
3	A	1434	COS	P2A-O4A	3.69	1.64	1.50
3	D	1434	COS	P1A-O1A	3.67	1.63	1.50
3	B	1434	COS	P2A-O4A	3.58	1.63	1.50
3	C	1434	COS	P3B-O7A	3.56	1.62	1.50
3	B	1434	COS	P1A-O1A	3.49	1.63	1.50
2	C	1433	FAD	C4-N3	3.39	1.38	1.33
2	B	1433	FAD	C4-N3	3.30	1.38	1.33
3	D	1434	COS	P3B-O7A	3.04	1.60	1.50
3	C	1434	COS	P2A-O4A	2.90	1.61	1.50
2	B	1433	FAD	PA-O1A	2.77	1.60	1.50
2	D	1433	FAD	C4-N3	2.75	1.37	1.33
3	C	1434	COS	P3B-O3B	2.75	1.64	1.59
2	D	1433	FAD	C9A-N10	2.74	1.42	1.38
3	D	1434	COS	P3B-O3B	2.72	1.64	1.59
3	D	1434	COS	P2A-O4A	2.68	1.60	1.50
2	D	1433	FAD	C8M-C8	2.59	1.56	1.51
2	A	1433	FAD	C4X-N5	2.57	1.37	1.33
3	B	1434	COS	P3B-O8A	2.42	1.64	1.54
2	C	1433	FAD	C8M-C8	2.38	1.55	1.51
2	A	1433	FAD	C9A-N10	2.33	1.41	1.38
2	B	1433	FAD	C4X-C10	2.31	1.41	1.38
2	B	1433	FAD	C8M-C8	2.30	1.55	1.51
2	B	1433	FAD	C4X-N5	2.29	1.36	1.33
2	C	1433	FAD	C9A-N10	2.23	1.41	1.38
2	C	1433	FAD	P-O1P	2.16	1.58	1.50
2	B	1433	FAD	P-O1P	2.13	1.58	1.50
3	D	1434	COS	P3B-O8A	2.10	1.62	1.54
2	C	1433	FAD	C4X-N5	2.05	1.36	1.33

All (61) bond angle outliers are listed below:

Mol	Chain	Res	Type	Atoms	Z	Observed(°)	Ideal(°)
2	D	1433	FAD	C4-N3-C2	8.91	122.66	115.14
2	A	1433	FAD	C4-N3-C2	7.19	121.21	115.14
2	B	1433	FAD	C4-N3-C2	7.14	121.17	115.14
2	C	1433	FAD	C4-N3-C2	6.69	120.79	115.14
2	C	1433	FAD	C10-C4X-N5	-4.77	117.96	121.26

Continued on next page...

Continued from previous page...

Mol	Chain	Res	Type	Atoms	Z	Observed(°)	Ideal(°)
2	C	1433	FAD	N3A-C2A-N1A	-4.68	121.36	128.68
2	D	1433	FAD	N3A-C2A-N1A	-4.58	121.51	128.68
2	A	1433	FAD	C9A-N10-C10	-4.52	115.99	121.91
3	D	1434	COS	N3A-C2A-N1A	-4.43	121.75	128.68
3	C	1434	COS	N3A-C2A-N1A	-4.41	121.79	128.68
2	B	1433	FAD	N3A-C2A-N1A	-4.38	121.83	128.68
3	B	1434	COS	N3A-C2A-N1A	-4.32	121.93	128.68
3	A	1434	COS	N3A-C2A-N1A	-4.29	121.98	128.68
2	D	1433	FAD	C9A-N10-C10	-4.23	116.37	121.91
2	B	1433	FAD	C10-C4X-N5	-4.21	118.35	121.26
2	C	1433	FAD	C4-C4X-N5	4.18	123.38	118.60
2	C	1433	FAD	C4X-N5-C5X	4.11	120.88	116.77
2	C	1433	FAD	C9A-N10-C10	-3.89	116.82	121.91
2	A	1433	FAD	N3A-C2A-N1A	-3.89	122.60	128.68
2	D	1433	FAD	C4-C4X-N5	3.84	122.98	118.60
2	B	1433	FAD	C9A-N10-C10	-3.77	116.97	121.91
2	B	1433	FAD	C4-C4X-N5	3.65	122.77	118.60
2	A	1433	FAD	C4-C4X-N5	3.51	122.61	118.60
2	D	1433	FAD	C4-C4X-C10	-3.28	117.78	119.95
2	C	1433	FAD	C1'-N10-C10	3.20	121.27	118.41
2	A	1433	FAD	C4-C4X-C10	-3.13	117.88	119.95
3	A	1434	COS	P2A-O3A-P1A	-3.00	122.55	132.83
2	D	1433	FAD	C10-C4X-N5	-2.96	119.21	121.26
2	B	1433	FAD	P-O3P-PA	-2.79	123.23	132.83
2	A	1433	FAD	C6-C5X-N5	2.72	122.04	119.05
2	B	1433	FAD	C4X-N5-C5X	2.70	119.47	116.77
2	C	1433	FAD	P-O3P-PA	-2.68	123.63	132.83
2	D	1433	FAD	O4B-C1B-C2B	-2.66	103.04	106.93
2	A	1433	FAD	P-O3P-PA	-2.63	123.79	132.83
2	A	1433	FAD	C10-C4X-N5	-2.63	119.44	121.26
2	D	1433	FAD	P-O3P-PA	-2.63	123.80	132.83
3	C	1434	COS	C6P-C7P-N8P	-2.62	106.60	111.90
2	D	1433	FAD	C4X-N5-C5X	2.58	119.35	116.77
2	B	1433	FAD	O4B-C1B-C2B	-2.58	103.15	106.93
3	D	1434	COS	C6P-C7P-N8P	-2.55	106.74	111.90
3	A	1434	COS	C6P-C7P-N8P	-2.53	106.79	111.90
2	D	1433	FAD	C4X-C4-N3	-2.53	119.98	123.43
3	B	1434	COS	C6P-C7P-N8P	-2.52	106.80	111.90
2	A	1433	FAD	C4X-N5-C5X	2.49	119.26	116.77
2	A	1433	FAD	C5X-C9A-N10	2.47	119.51	117.72
2	C	1433	FAD	C4X-C4-N3	-2.43	120.11	123.43
3	B	1434	COS	C4A-C5A-N7A	-2.42	106.88	109.40

Continued on next page...

Continued from previous page...

Mol	Chain	Res	Type	Atoms	Z	Observed(°)	Ideal(°)
2	D	1433	FAD	C4A-C5A-N7A	-2.38	106.91	109.40
3	B	1434	COS	P2A-O3A-P1A	-2.37	124.68	132.83
2	C	1433	FAD	C2A-N1A-C6A	2.37	122.81	118.75
3	C	1434	COS	C4A-C5A-N7A	-2.34	106.96	109.40
2	C	1433	FAD	O4B-C1B-C2B	-2.27	103.60	106.93
2	C	1433	FAD	O4B-C4B-C5B	-2.23	102.03	109.37
3	D	1434	COS	C4A-C5A-N7A	-2.21	107.10	109.40
2	A	1433	FAD	C4A-C5A-N7A	-2.21	107.10	109.40
2	B	1433	FAD	C1'-N10-C9A	-2.18	116.57	118.29
3	A	1434	COS	C4A-C5A-N7A	-2.17	107.14	109.40
2	B	1433	FAD	C4X-C4-N3	-2.13	120.52	123.43
2	A	1433	FAD	O4B-C1B-C2B	-2.08	103.89	106.93
2	B	1433	FAD	C2A-N1A-C6A	2.05	122.25	118.75
2	A	1433	FAD	C1'-N10-C10	2.03	120.23	118.41

There are no chirality outliers.

All (26) torsion outliers are listed below:

Mol	Chain	Res	Type	Atoms
2	C	1433	FAD	C2'-C1'-N10-C10
3	D	1434	COS	CCP-O6A-P2A-O3A
2	D	1433	FAD	C2'-C1'-N10-C10
2	A	1433	FAD	C2'-C1'-N10-C10
2	B	1433	FAD	C2'-C1'-N10-C10
3	A	1434	COS	CDP-CBP-CCP-O6A
3	A	1434	COS	CEP-CBP-CCP-O6A
3	A	1434	COS	CAP-CBP-CCP-O6A
3	B	1434	COS	CCP-O6A-P2A-O4A
4	D	1438	EDO	O1-C1-C2-O2
3	C	1434	COS	CDP-CBP-CCP-O6A
3	C	1434	COS	CEP-CBP-CCP-O6A
3	C	1434	COS	CCP-O6A-P2A-O3A
3	B	1434	COS	C5B-O5B-P1A-O3A
3	B	1434	COS	CCP-O6A-P2A-O3A
3	D	1434	COS	CCP-O6A-P2A-O4A
3	D	1434	COS	CCP-O6A-P2A-O5A
3	C	1434	COS	CAP-CBP-CCP-O6A
3	D	1434	COS	CAP-CBP-CCP-O6A
3	D	1434	COS	CDP-CBP-CCP-O6A
2	D	1433	FAD	O2'-C2'-C3'-C4'
2	D	1433	FAD	O2'-C2'-C3'-O3'
3	D	1434	COS	CEP-CBP-CCP-O6A

Continued on next page...

Continued from previous page...

Mol	Chain	Res	Type	Atoms
3	B	1434	COS	C5B-O5B-P1A-O1A
3	B	1434	COS	C5B-O5B-P1A-O2A
2	D	1433	FAD	C1'-C2'-C3'-O3'

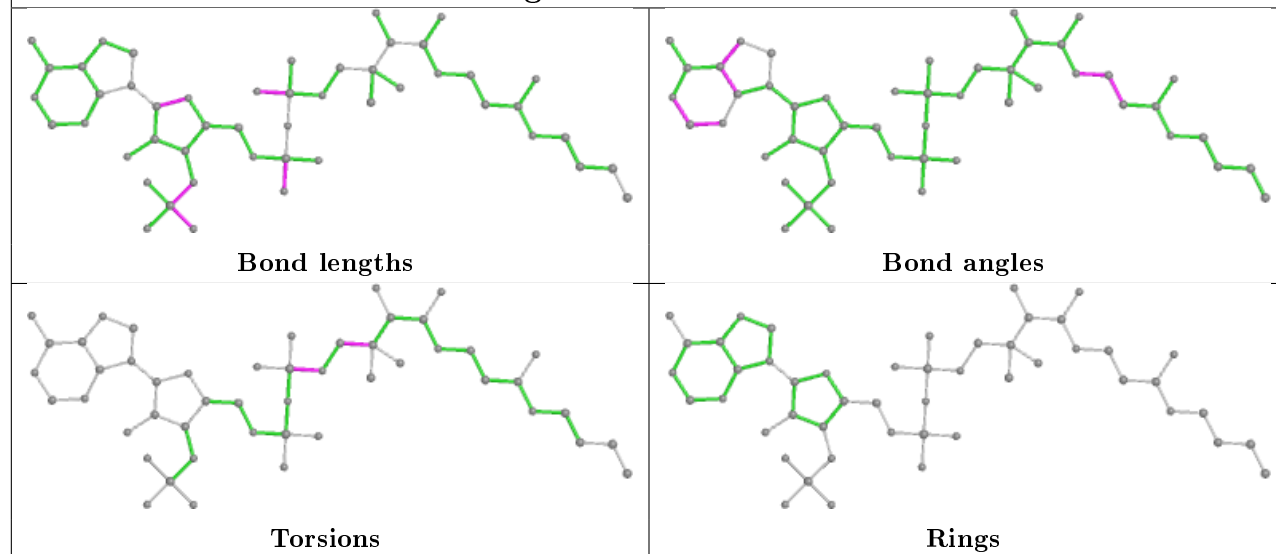
There are no ring outliers.

8 monomers are involved in 14 short contacts:

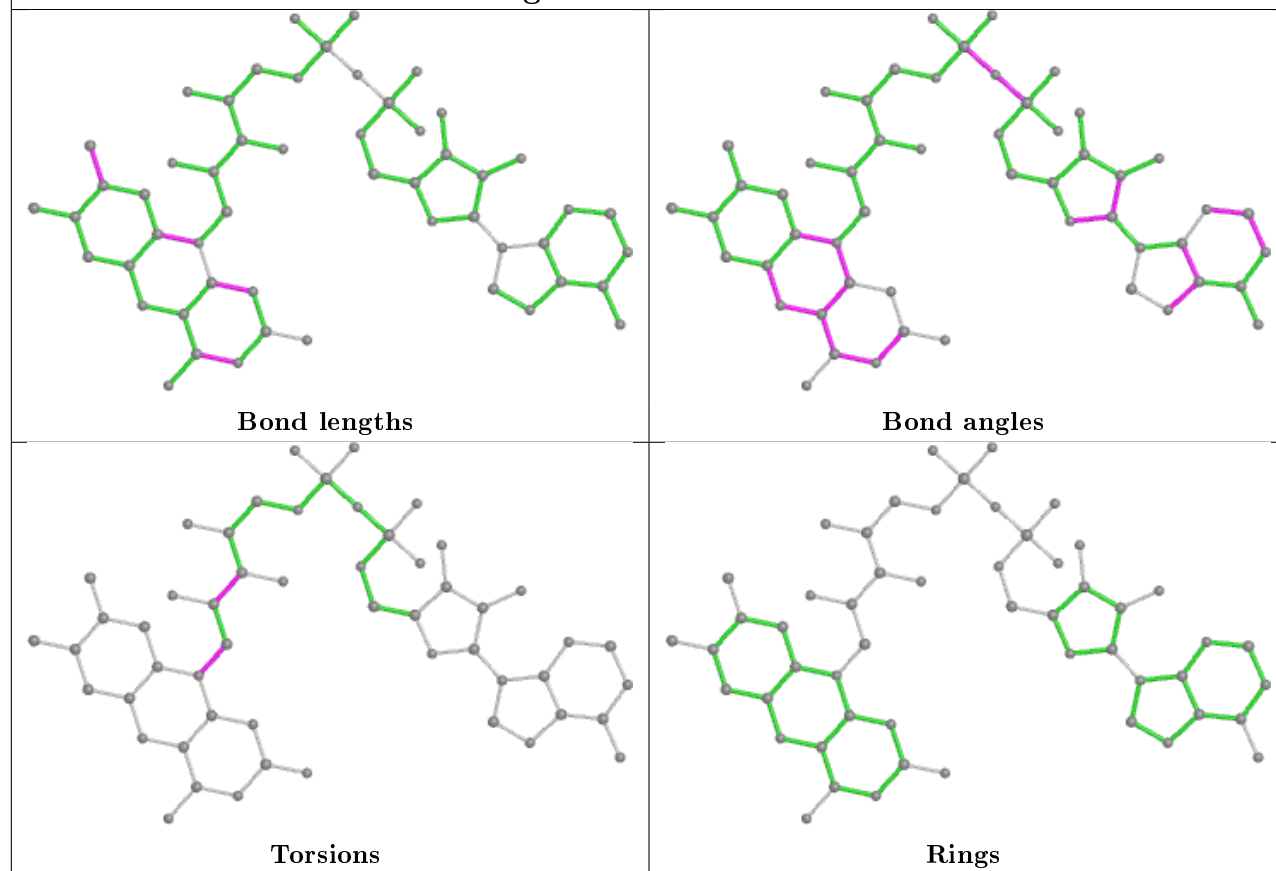
Mol	Chain	Res	Type	Clashes	Symm-Clashes
3	C	1434	COS	3	0
2	D	1433	FAD	1	0
2	C	1433	FAD	2	0
2	A	1433	FAD	3	0
3	B	1434	COS	1	0
3	D	1434	COS	3	0
2	B	1433	FAD	1	0
3	A	1434	COS	4	0

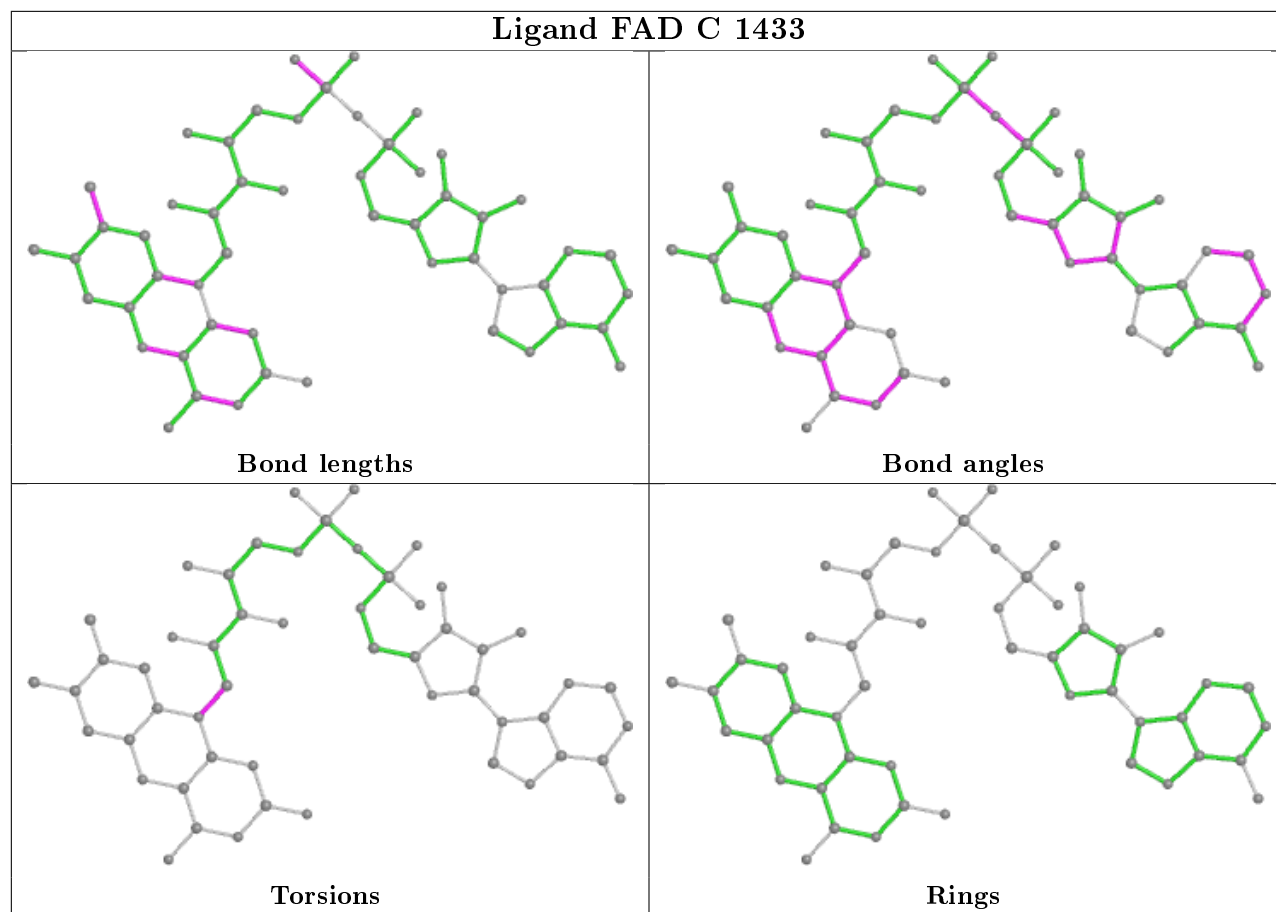
The following is a two-dimensional graphical depiction of Mogul quality analysis of bond lengths, bond angles, torsion angles, and ring geometry for all instances of the Ligand of Interest. In addition, ligands with molecular weight > 250 and outliers as shown on the validation Tables will also be included. For torsion angles, if less than 5% of the Mogul distribution of torsion angles is within 10 degrees of the torsion angle in question, then that torsion angle is considered an outlier. Any bond that is central to one or more torsion angles identified as an outlier by Mogul will be highlighted in the graph. For rings, the root-mean-square deviation (RMSD) between the ring in question and similar rings identified by Mogul is calculated over all ring torsion angles. If the average RMSD is greater than 60 degrees and the minimal RMSD between the ring in question and any Mogul-identified rings is also greater than 60 degrees, then that ring is considered an outlier. The outliers are highlighted in purple. The color gray indicates Mogul did not find sufficient equivalents in the CSD to analyse the geometry.

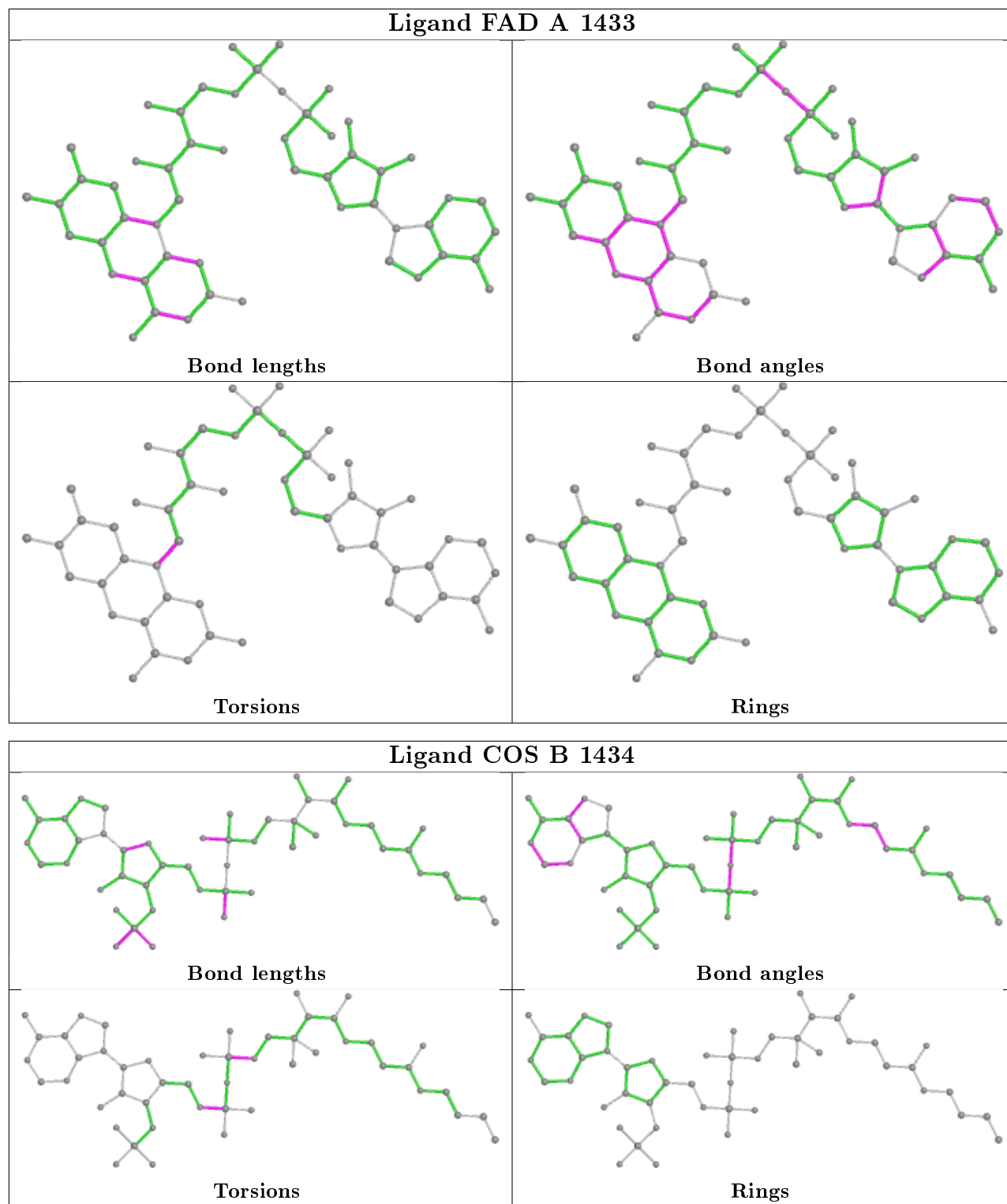
Ligand COS C 1434



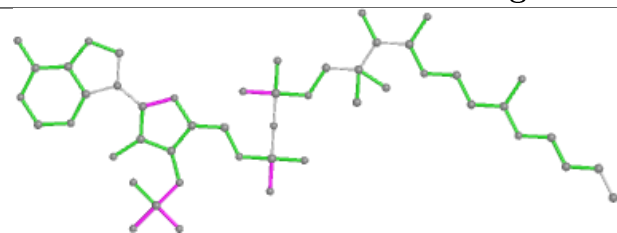
Ligand FAD D 1433



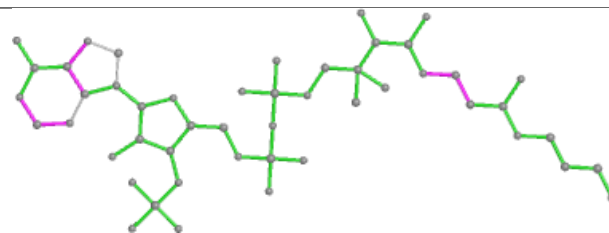




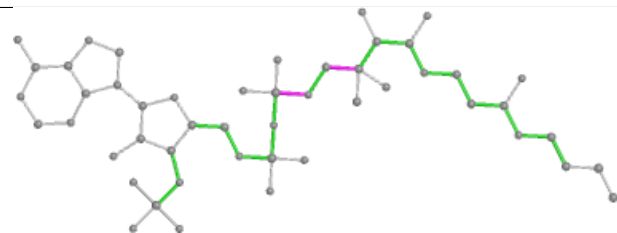
Ligand COS D 1434



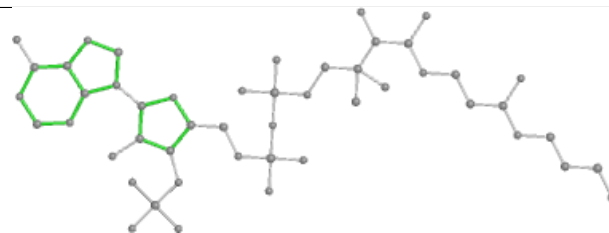
Bond lengths



Bond angles

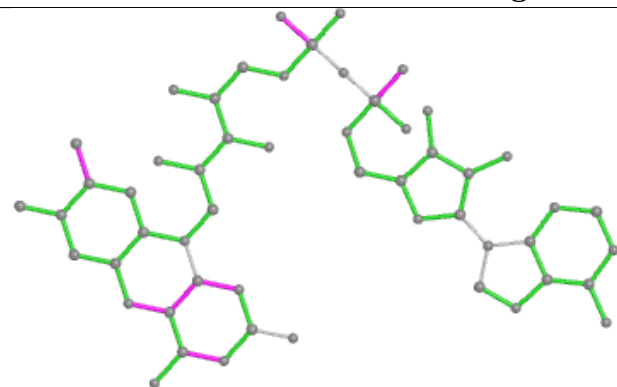


Torsions

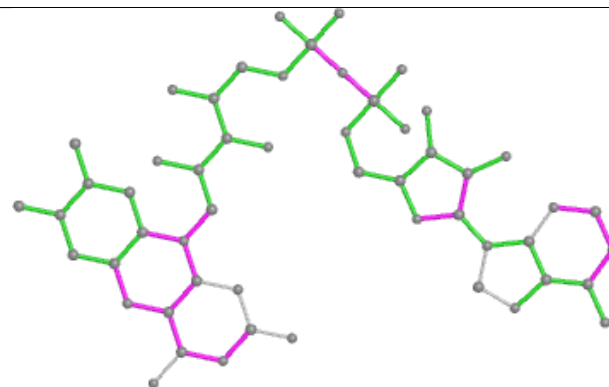


Rings

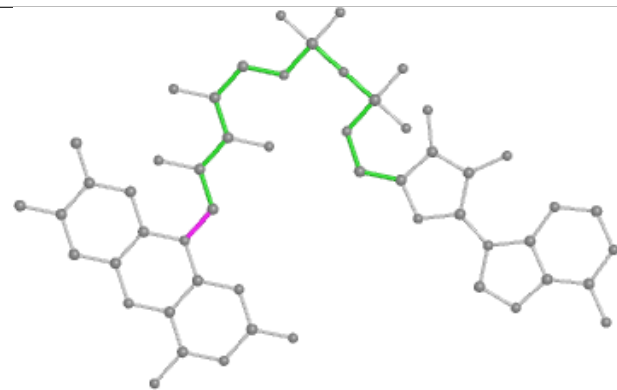
Ligand FAD B 1433



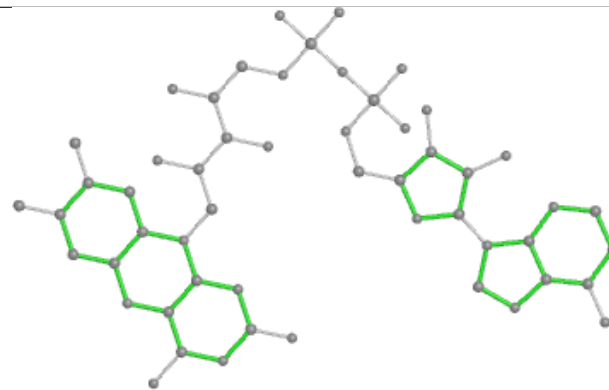
Bond lengths



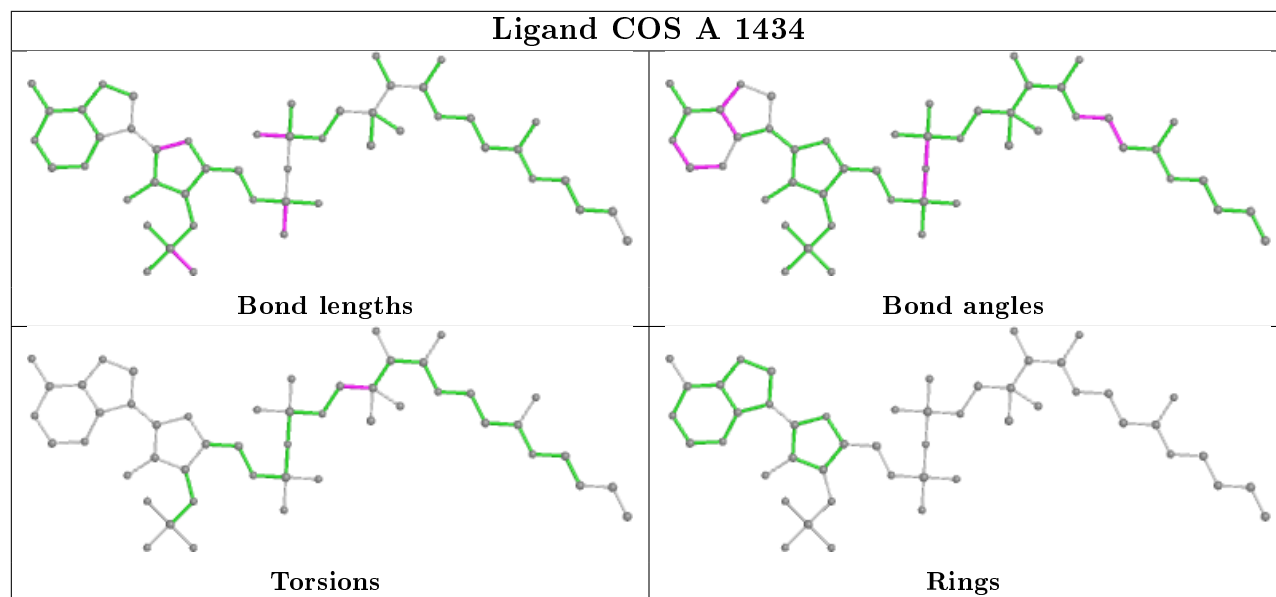
Bond angles



Torsions



Rings



5.7 Other polymers [i](#)

There are no such residues in this entry.

5.8 Polymer linkage issues [i](#)

There are no chain breaks in this entry.

6 Fit of model and data

6.1 Protein, DNA and RNA chains

In the following table, the column labelled ‘#RSRZ> 2’ contains the number (and percentage) of RSRZ outliers, followed by percent RSRZ outliers for the chain as percentile scores relative to all X-ray entries and entries of similar resolution. The OWAB column contains the minimum, median, 95th percentile and maximum values of the occupancy-weighted average B-factor per residue. The column labelled ‘Q< 0.9’ lists the number of (and percentage) of residues with an average occupancy less than 0.9.

Mol	Chain	Analysed	<RSRZ>	#RSRZ>2	OWAB(Å ²)	Q<0.9
1	A	381/404 (94%)	0.04	5 (1%) 77 76	23, 28, 34, 47	0
1	B	377/404 (93%)	-0.10	3 (0%) 86 85	20, 28, 35, 46	0
1	C	377/404 (93%)	-0.16	2 (0%) 91 90	21, 27, 35, 46	0
1	D	381/404 (94%)	-0.16	5 (1%) 77 76	21, 27, 34, 53	0
All	All	1516/1616 (93%)	-0.10	15 (0%) 82 81	20, 28, 35, 53	0

All (15) RSRZ outliers are listed below:

Mol	Chain	Res	Type	RSRZ
1	D	54	LEU	3.7
1	D	52	ALA	3.7
1	A	198	TYR	3.7
1	D	53	PRO	3.0
1	A	226	THR	2.7
1	A	240	ASP	2.5
1	A	52	ALA	2.4
1	B	240	ASP	2.2
1	C	59	ASP	2.2
1	D	56	THR	2.1
1	A	225	PRO	2.1
1	D	226	THR	2.1
1	B	99	GLN	2.1
1	C	109	PRO	2.1
1	B	59	ASP	2.0

6.2 Non-standard residues in protein, DNA, RNA chains

There are no non-standard protein/DNA/RNA residues in this entry.

6.3 Carbohydrates ⓘ

There are no carbohydrates in this entry.

6.4 Ligands ⓘ

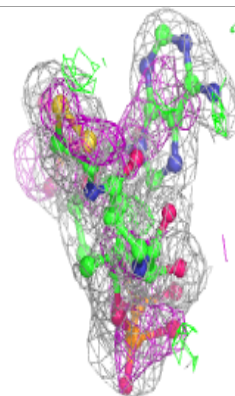
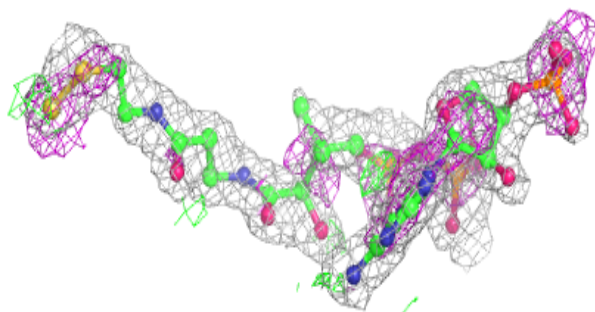
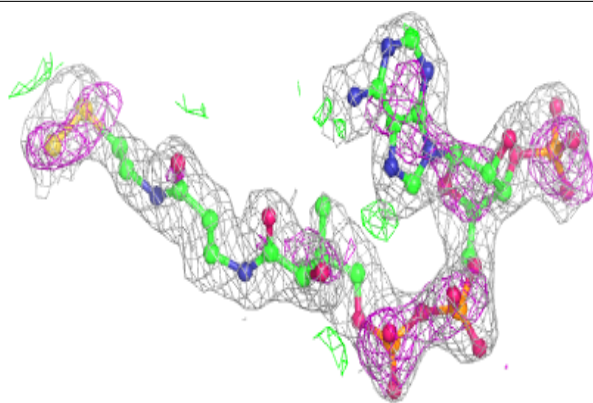
In the following table, the Atoms column lists the number of modelled atoms in the group and the number defined in the chemical component dictionary. The B-factors column lists the minimum, median, 95th percentile and maximum values of B factors of atoms in the group. The column labelled 'Q< 0.9' lists the number of atoms with occupancy less than 0.9.

Mol	Type	Chain	Res	Atoms	RSCC	RSR	B-factors(\AA^2)	Q<0.9
4	EDO	A	1435	4/4	0.85	0.20	47,48,48,48	0
4	EDO	C	1435	4/4	0.85	0.15	47,47,47,47	0
3	COS	B	1434	49/49	0.86	0.27	41,49,59,59	0
3	COS	C	1434	49/49	0.87	0.26	28,41,50,51	0
4	EDO	D	1438	4/4	0.88	0.20	41,41,42,42	0
3	COS	A	1434	49/49	0.89	0.21	30,39,49,50	0
5	CL	A	1437	1/1	0.91	0.08	48,48,48,48	0
5	CL	B	1438	1/1	0.91	0.16	44,44,44,44	0
4	EDO	D	1435	4/4	0.92	0.18	30,31,32,33	0
5	CL	D	1441	1/1	0.93	0.07	43,43,43,43	0
3	COS	D	1434	49/49	0.93	0.17	21,30,44,46	0
5	CL	C	1437	1/1	0.94	0.05	50,50,50,50	0
4	EDO	B	1435	4/4	0.94	0.13	29,31,31,32	0
5	CL	C	1436	1/1	0.95	0.17	37,37,37,37	0
5	CL	D	1440	1/1	0.95	0.08	51,51,51,51	0
5	CL	B	1437	1/1	0.95	0.17	53,53,53,53	0
4	EDO	D	1436	4/4	0.95	0.12	27,30,31,32	0
5	CL	A	1436	1/1	0.96	0.17	44,44,44,44	0
5	CL	B	1436	1/1	0.97	0.23	49,49,49,49	0
4	EDO	D	1437	4/4	0.97	0.14	24,29,31,33	0
2	FAD	B	1433	53/53	0.97	0.12	22,25,27,29	0
2	FAD	A	1433	53/53	0.98	0.07	16,20,23,23	0
2	FAD	D	1433	53/53	0.98	0.06	14,17,18,19	0
2	FAD	C	1433	53/53	0.98	0.07	18,20,25,26	0
5	CL	D	1439	1/1	1.00	0.17	30,30,30,30	0

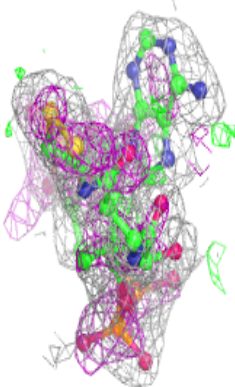
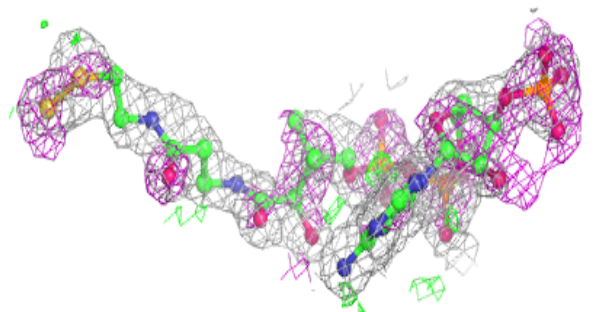
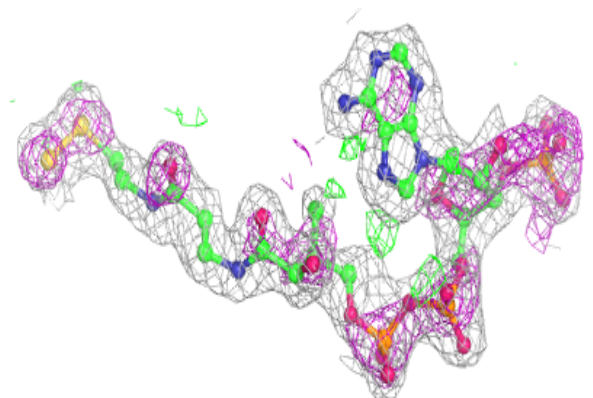
The following is a graphical depiction of the model fit to experimental electron density of all instances of the Ligand of Interest. In addition, ligands with molecular weight > 250 and outliers as shown on the geometry validation Tables will also be included. Each fit is shown from different orientation to approximate a three-dimensional view.

Electron density around COS B 1434:

$2mF_o-DF_c$ (at 0.7 rmsd) in gray
 mF_o-DF_c (at 3 rmsd) in purple (negative)
and green (positive)

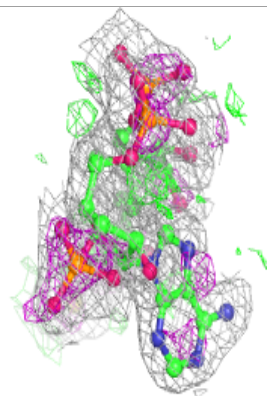
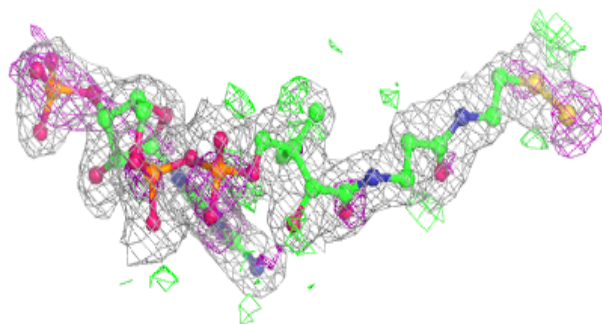
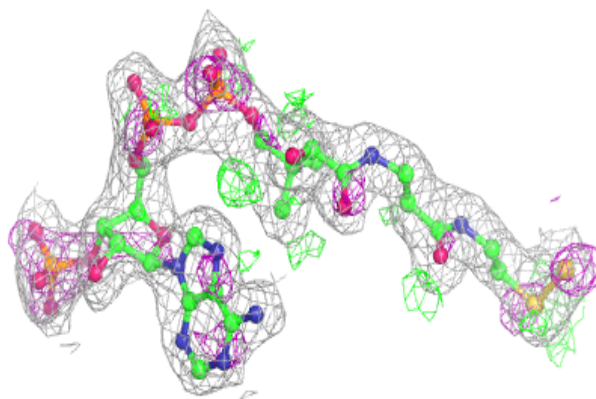
**Electron density around COS C 1434:**

$2mF_o-DF_c$ (at 0.7 rmsd) in gray
 mF_o-DF_c (at 3 rmsd) in purple (negative)
and green (positive)

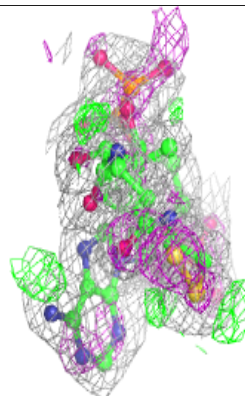
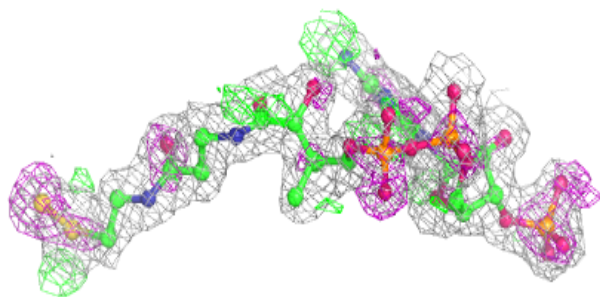
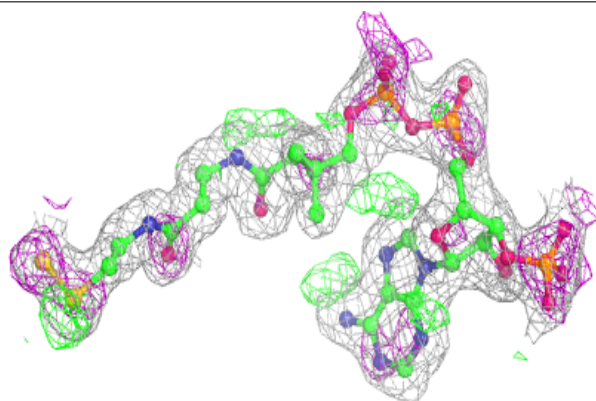


Electron density around COS A 1434:

$2mF_o-DF_c$ (at 0.7 rmsd) in gray
 mF_o-DF_c (at 3 rmsd) in purple (negative)
and green (positive)

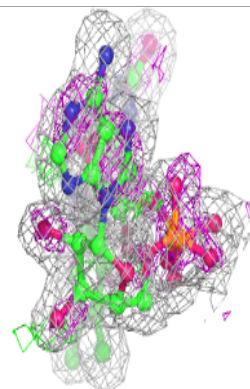
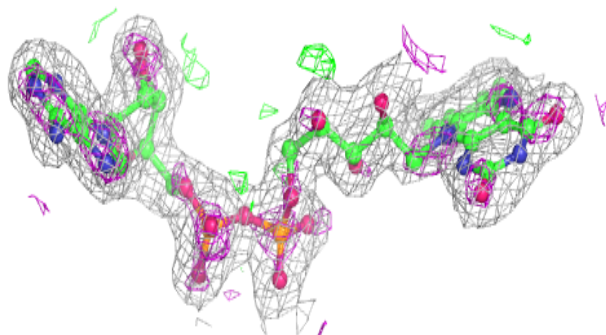
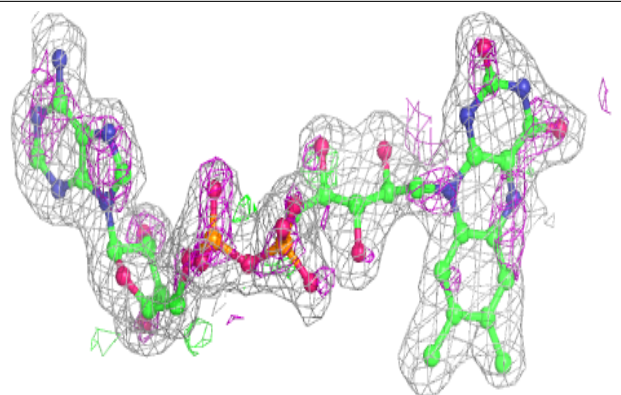
**Electron density around COS D 1434:**

$2mF_o-DF_c$ (at 0.7 rmsd) in gray
 mF_o-DF_c (at 3 rmsd) in purple (negative)
and green (positive)

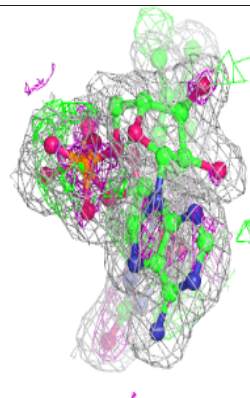
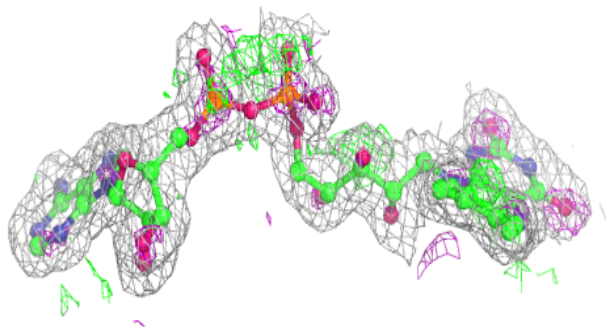
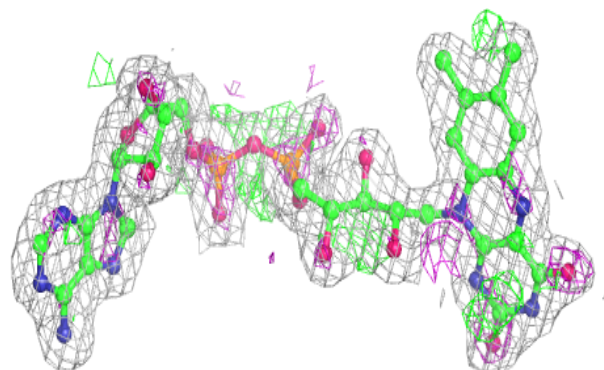


Electron density around FAD B 1433:

$2mF_o-DF_c$ (at 0.7 rmsd) in gray
 mF_o-DF_c (at 3 rmsd) in purple (negative)
and green (positive)

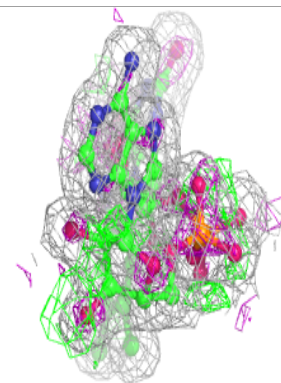
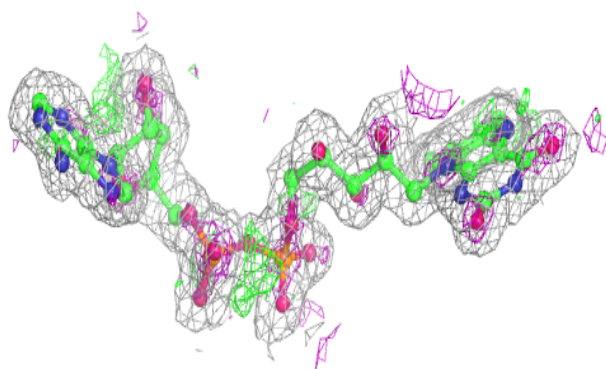
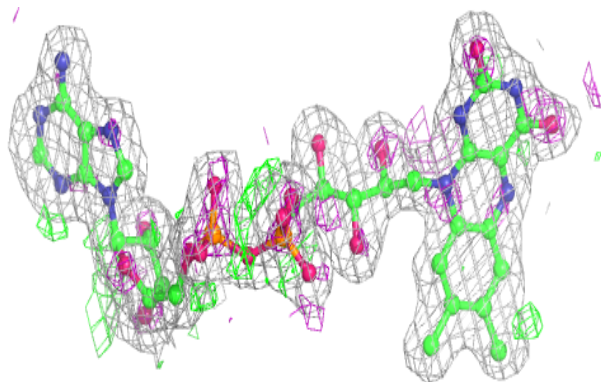
**Electron density around FAD A 1433:**

$2mF_o-DF_c$ (at 0.7 rmsd) in gray
 mF_o-DF_c (at 3 rmsd) in purple (negative)
and green (positive)

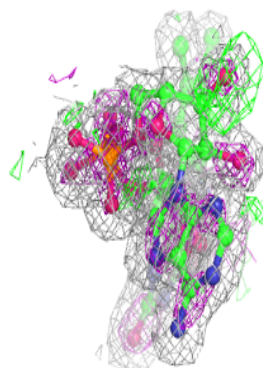
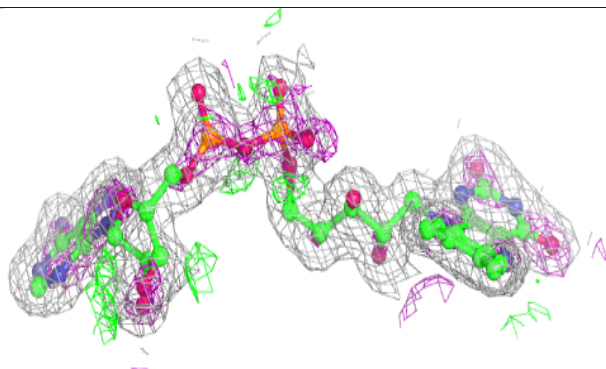
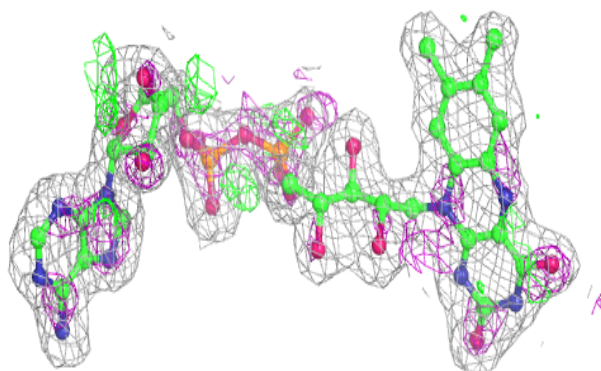


Electron density around FAD D 1433:

$2mF_o-DF_c$ (at 0.7 rmsd) in gray
 mF_o-DF_c (at 3 rmsd) in purple (negative)
and green (positive)

**Electron density around FAD C 1433:**

$2mF_o-DF_c$ (at 0.7 rmsd) in gray
 mF_o-DF_c (at 3 rmsd) in purple (negative)
and green (positive)



6.5 Other polymers [i](#)

There are no such residues in this entry.