



wwPDB X-ray Structure Validation Summary Report ⓘ

May 13, 2020 – 12:53 am BST

PDB ID : 2JJ4
Title : The complex of PII and acetylglutamate kinase from *Synechococcus elongatus* PCC7942
Authors : Llacer, J.L.; Marco-Marin, C.; Gil-Ortiz, F.; Fita, I.; Rubio, V.
Deposited on : 2007-07-04
Resolution : 3.46 Å(reported)

This is a wwPDB X-ray Structure Validation Summary Report for a publicly released PDB entry.

We welcome your comments at validation@mail.wwpdb.org

A user guide is available at

<https://www.wwpdb.org/validation/2017/XrayValidationReportHelp>

with specific help available everywhere you see the ⓘ symbol.

The following versions of software and data (see [references ⓘ](#)) were used in the production of this report:

MolProbity : 4.02b-467
Mogul : 1.8.5 (274361), CSD as541be (2020)
Xtriage (Phenix) : 1.13
EDS : 2.11
Percentile statistics : 20191225.v01 (using entries in the PDB archive December 25th 2019)
Refmac : 5.8.0158
CCP4 : 7.0.044 (Gargrove)
Ideal geometry (proteins) : Engh & Huber (2001)
Ideal geometry (DNA, RNA) : Parkinson et al. (1996)
Validation Pipeline (wwPDB-VP) : 2.11

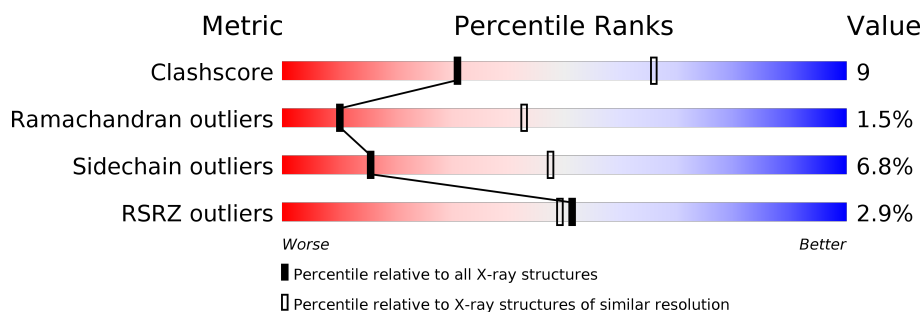
1 Overall quality at a glance

The following experimental techniques were used to determine the structure:

X-RAY DIFFRACTION

The reported resolution of this entry is 3.46 Å.

Percentile scores (ranging between 0-100) for global validation metrics of the entry are shown in the following graphic. The table shows the number of entries on which the scores are based.



Metric	Whole archive (#Entries)	Similar resolution (#Entries, resolution range(Å))
Clashscore	141614	1372 (3.52-3.40)
Ramachandran outliers	138981	1337 (3.52-3.40)
Sidechain outliers	138945	1338 (3.52-3.40)
RSRZ outliers	127900	1205 (3.52-3.40)

The table below summarises the geometric issues observed across the polymeric chains and their fit to the electron density. The red, orange, yellow and green segments on the lower bar indicate the fraction of residues that contain outliers for ≥ 3 , 2, 1 and 0 types of geometric quality criteria respectively. A grey segment represents the fraction of residues that are not modelled. The numeric value for each fraction is indicated below the corresponding segment, with a dot representing fractions $\leq 5\%$. The upper red bar (where present) indicates the fraction of residues that have poor fit to the electron density. The numeric value is given above the bar.

Mol	Chain	Length	Quality of chain
1	A	321	<div> <div>%</div> <div> <div></div> <div>72%</div> <div>13%</div> <div>•</div> <div>12%</div> </div> </div>
1	B	321	<div> <div>%</div> <div> <div></div> <div>72%</div> <div>14%</div> <div>•</div> <div>12%</div> </div> </div>
1	C	321	<div> <div>6%</div> <div> <div></div> <div>76%</div> <div>11%</div> <div>•</div> <div>11%</div> </div> </div>
2	D	112	<div> <div>4%</div> <div> <div></div> <div>71%</div> <div>25%</div> <div>• •</div> </div> </div>
2	E	112	<div> <div>%</div> <div> <div></div> <div>67%</div> <div>27%</div> <div>• •</div> </div> </div>
2	F	112	<div> <div>4%</div> <div> <div></div> <div>68%</div> <div>29%</div> <div>• •</div> </div> </div>

2 Entry composition

There are 3 unique types of molecules in this entry. The entry contains 8557 atoms, of which 0 are hydrogens and 0 are deuteriums.

In the tables below, the ZeroOcc column contains the number of atoms modelled with zero occupancy, the AltConf column contains the number of residues with at least one atom in alternate conformation and the Trace column contains the number of residues modelled with at most 2 atoms.

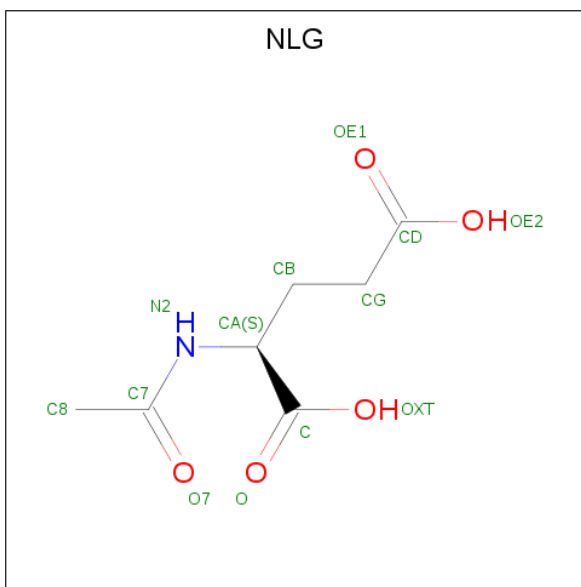
- Molecule 1 is a protein called ACETYLGLUTAMATE KINASE.

Mol	Chain	Residues	Atoms					ZeroOcc	AltConf	Trace
1	A	284	Total	C	N	O	S	0	0	0
			2028	1268	359	390	11			
1	B	284	Total	C	N	O	S	0	1	0
			2059	1291	368	389	11			
1	C	285	Total	C	N	O	S	0	0	0
			1972	1223	355	384	10			

- Molecule 2 is a protein called NITROGEN REGULATORY PROTEIN P-II.

Mol	Chain	Residues	Atoms					ZeroOcc	AltConf	Trace
2	D	111	Total	C	N	O	S	0	0	0
			819	517	139	161	2			
2	E	108	Total	C	N	O	S	0	0	0
			828	523	145	158	2			
2	F	109	Total	C	N	O	S	0	0	0
			825	522	143	158	2			

- Molecule 3 is N-ACETYL-L-GLUTAMATE (three-letter code: NLG) (formula: C₇H₁₁NO₅).

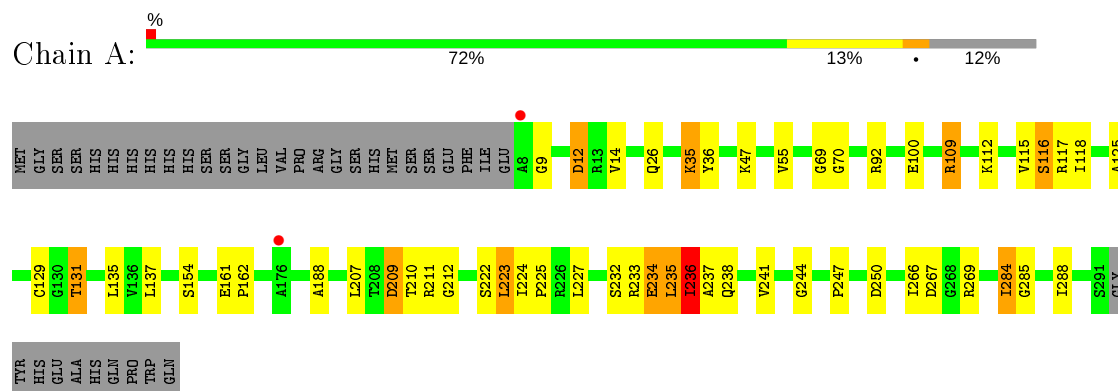


Mol	Chain	Residues	Atoms				ZeroOcc	AltConf
3	A	1	Total	C	N	O	0	0
			13	7	1	5		
3	B	1	Total	C	N	O	0	0
			13	7	1	5		

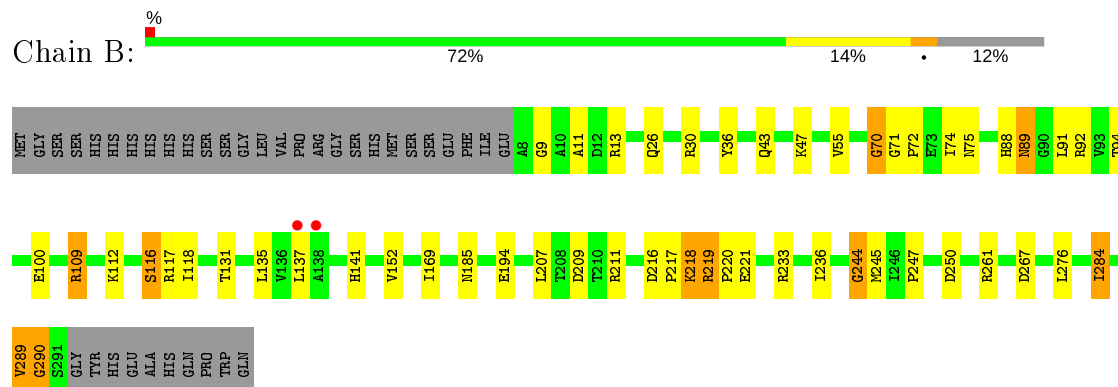
3 Residue-property plots [i](#)

These plots are drawn for all protein, RNA and DNA chains in the entry. The first graphic for a chain summarises the proportions of the various outlier classes displayed in the second graphic. The second graphic shows the sequence view annotated by issues in geometry and electron density. Residues are color-coded according to the number of geometric quality criteria for which they contain at least one outlier: green = 0, yellow = 1, orange = 2 and red = 3 or more. A red dot above a residue indicates a poor fit to the electron density ($RSRZ > 2$). Stretches of 2 or more consecutive residues without any outlier are shown as a green connector. Residues present in the sample, but not in the model, are shown in grey.

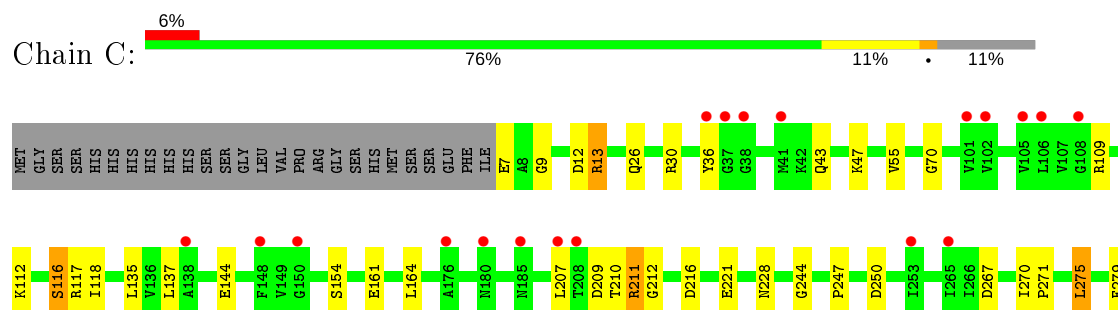
• Molecule 1: ACETYLGLUTAMATE KINASE

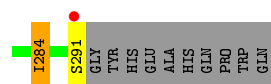


• Molecule 1: ACETYLGLUTAMATE KINASE



• Molecule 1: ACETYLGLUTAMATE KINASE

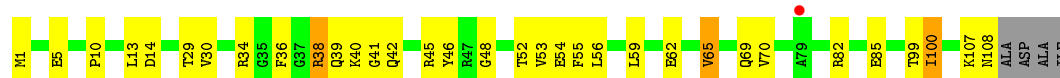




● Molecule 2: NITROGEN REGULATORY PROTEIN P-II



● Molecule 2: NITROGEN REGULATORY PROTEIN P-II



● Molecule 2: NITROGEN REGULATORY PROTEIN P-II



4 Data and refinement statistics

Property	Value	Source
Space group	C 2 2 21	Depositor
Cell constants a, b, c, α , β , γ	106.90Å 149.54Å 162.21Å 90.00° 90.00° 90.00°	Depositor
Resolution (Å)	50.00 – 3.46 53.45 – 3.46	Depositor EDS
% Data completeness (in resolution range)	99.9 (50.00-3.46) 99.9 (53.45-3.46)	Depositor EDS
R_{merge}	0.10	Depositor
R_{sym}	(Not available)	Depositor
$\langle I/\sigma(I) \rangle$ ¹	2.88 (at 3.48Å)	Xtriage
Refinement program	REFMAC 5.2.0019	Depositor
R, R_{free}	0.233 , 0.294 0.222 , (Not available)	Depositor DCC
R_{free} test set	No test flags present.	wwPDB-VP
Wilson B-factor (Å ²)	89.6	Xtriage
Anisotropy	0.344	Xtriage
Bulk solvent k_{sol} (e/Å ³), B_{sol} (Å ²)	0.32 , 86.2	EDS
L-test for twinning ²	$\langle L \rangle = 0.44$, $\langle L^2 \rangle = 0.27$	Xtriage
Estimated twinning fraction	No twinning to report.	Xtriage
F_o, F_c correlation	0.91	EDS
Total number of atoms	8557	wwPDB-VP
Average B, all atoms (Å ²)	73.0	wwPDB-VP

Xtriage's analysis on translational NCS is as follows: *The largest off-origin peak in the Patterson function is 3.56% of the height of the origin peak. No significant pseudotranslation is detected.*

¹Intensities estimated from amplitudes.

²Theoretical values of $\langle |L| \rangle$, $\langle L^2 \rangle$ for acentric reflections are 0.5, 0.333 respectively for untwinned datasets, and 0.375, 0.2 for perfectly twinned datasets.

5 Model quality [i](#)

5.1 Standard geometry [i](#)

Bond lengths and bond angles in the following residue types are not validated in this section: NLG

The Z score for a bond length (or angle) is the number of standard deviations the observed value is removed from the expected value. A bond length (or angle) with $|Z| > 5$ is considered an outlier worth inspection. RMSZ is the root-mean-square of all Z scores of the bond lengths (or angles).

Mol	Chain	Bond lengths		Bond angles	
		RMSZ	$\# Z > 5$	RMSZ	$\# Z > 5$
1	A	0.34	0/2057	0.51	0/2802
1	B	0.34	0/2088	0.56	1/2842 (0.0%)
1	C	0.42	1/1999 (0.1%)	0.52	1/2728 (0.0%)
2	D	0.32	0/826	0.49	0/1116
2	E	0.36	0/835	0.57	0/1124
2	F	0.36	0/832	0.52	0/1120
All	All	0.36	1/8637 (0.0%)	0.53	2/11732 (0.0%)

Chiral center outliers are detected by calculating the chiral volume of a chiral center and verifying if the center is modelled as a planar moiety or with the opposite hand. A planarity outlier is detected by checking planarity of atoms in a peptide group, atoms in a mainchain group or atoms of a sidechain that are expected to be planar.

Mol	Chain	#Chirality outliers	#Planarity outliers
1	A	0	3
1	B	0	4
1	C	0	2
All	All	0	9

All (1) bond length outliers are listed below:

Mol	Chain	Res	Type	Atoms	Z	Observed(Å)	Ideal(Å)
1	C	43	GLN	CD-OE1	12.61	1.51	1.24

All (2) bond angle outliers are listed below:

Mol	Chain	Res	Type	Atoms	Z	Observed(°)	Ideal(°)
1	B	290	GLY	N-CA-C	-5.19	100.12	113.10
1	C	43	GLN	CG-CD-OE1	-5.04	111.52	121.60

There are no chirality outliers.

5 of 9 planarity outliers are listed below:

Mol	Chain	Res	Type	Group
1	A	234	GLU	Peptide
1	A	236	ILE	Peptide
1	A	9	GLY	Peptide
1	B	218	LYS	Peptide
1	B	9	GLY	Peptide

5.2 Too-close contacts

In the following table, the Non-H and H(model) columns list the number of non-hydrogen atoms and hydrogen atoms in the chain respectively. The H(added) column lists the number of hydrogen atoms added and optimized by MolProbity. The Clashes column lists the number of clashes within the asymmetric unit, whereas Symm-Clashes lists symmetry related clashes.

Mol	Chain	Non-H	H(model)	H(added)	Clashes	Symm-Clashes
1	A	2028	0	1970	52	0
1	B	2059	0	2038	41	0
1	C	1972	0	1847	19	0
2	D	819	0	813	19	0
2	E	828	0	852	19	0
2	F	825	0	844	15	0
3	A	13	0	9	2	0
3	B	13	0	9	3	0
All	All	8557	0	8382	154	0

The all-atom clashscore is defined as the number of clashes found per 1000 atoms (including hydrogen atoms). The all-atom clashscore for this structure is 9.

The worst 5 of 154 close contacts within the same asymmetric unit are listed below, sorted by their clash magnitude.

Atom-1	Atom-2	Interatomic distance (Å)	Clash overlap (Å)
1:C:12:ASP:HA	1:C:13:ARG:CB	1.55	1.25
1:A:235:LEU:HA	1:A:236:ILE:C	1.71	1.10
1:C:12:ASP:CA	1:C:13:ARG:CB	2.30	1.07
1:A:235:LEU:HD12	1:A:235:LEU:O	1.58	1.04
1:B:219:ARG:H	1:B:220:PRO:CD	1.71	1.03

There are no symmetry-related clashes.

5.3 Torsion angles

5.3.1 Protein backbone

In the following table, the Percentiles column shows the percent Ramachandran outliers of the chain as a percentile score with respect to all X-ray entries followed by that with respect to entries of similar resolution.

The Analysed column shows the number of residues for which the backbone conformation was analysed, and the total number of residues.

Mol	Chain	Analysed	Favoured	Allowed	Outliers	Percentiles	
1	A	282/321 (88%)	261 (93%)	16 (6%)	5 (2%)	8	39
1	B	283/321 (88%)	262 (93%)	17 (6%)	4 (1%)	11	44
1	C	283/321 (88%)	262 (93%)	18 (6%)	3 (1%)	14	50
2	D	109/112 (97%)	97 (89%)	11 (10%)	1 (1%)	17	54
2	E	106/112 (95%)	95 (90%)	9 (8%)	2 (2%)	8	38
2	F	107/112 (96%)	95 (89%)	10 (9%)	2 (2%)	8	38
All	All	1170/1299 (90%)	1072 (92%)	81 (7%)	17 (2%)	10	43

5 of 17 Ramachandran outliers are listed below:

Mol	Chain	Res	Type
1	A	235	LEU
1	B	219	ARG
1	B	245	MET
1	A	223	LEU
1	C	13	ARG

5.3.2 Protein sidechains

In the following table, the Percentiles column shows the percent sidechain outliers of the chain as a percentile score with respect to all X-ray entries followed by that with respect to entries of similar resolution.

The Analysed column shows the number of residues for which the sidechain conformation was analysed, and the total number of residues.

Mol	Chain	Analysed	Rotameric	Outliers	Percentiles	
1	A	202/256 (79%)	191 (95%)	11 (5%)	22	54
1	B	208/256 (81%)	196 (94%)	12 (6%)	20	52
1	C	185/256 (72%)	173 (94%)	12 (6%)	17	49

Continued on next page...

Continued from previous page...

Mol	Chain	Analysed	Rotameric	Outliers	Percentiles	
2	D	82/93 (88%)	75 (92%)	7 (8%)	10	38
2	E	87/93 (94%)	78 (90%)	9 (10%)	7	30
2	F	85/93 (91%)	78 (92%)	7 (8%)	11	39
All	All	849/1047 (81%)	791 (93%)	58 (7%)	16	47

5 of 58 residues with a non-rotameric sidechain are listed below:

Mol	Chain	Res	Type
1	C	135	LEU
1	C	250	ASP
2	F	18	ILE
1	C	137	LEU
1	C	209	ASP

Some sidechains can be flipped to improve hydrogen bonding and reduce clashes. 5 of 10 such sidechains are listed below:

Mol	Chain	Res	Type
1	C	43	GLN
1	C	89	ASN
2	E	22	ASN
1	B	143	GLN
1	C	143	GLN

5.3.3 RNA ⓘ

There are no RNA molecules in this entry.

5.4 Non-standard residues in protein, DNA, RNA chains ⓘ

There are no non-standard protein/DNA/RNA residues in this entry.

5.5 Carbohydrates ⓘ

There are no carbohydrates in this entry.

5.6 Ligand geometry

2 ligands are modelled in this entry.

In the following table, the Counts columns list the number of bonds (or angles) for which Mogul statistics could be retrieved, the number of bonds (or angles) that are observed in the model and the number of bonds (or angles) that are defined in the Chemical Component Dictionary. The Link column lists molecule types, if any, to which the group is linked. The Z score for a bond length (or angle) is the number of standard deviations the observed value is removed from the expected value. A bond length (or angle) with $|Z| > 2$ is considered an outlier worth inspection. RMSZ is the root-mean-square of all Z scores of the bond lengths (or angles).

Mol	Type	Chain	Res	Link	Bond lengths			Bond angles		
					Counts	RMSZ	# Z > 2	Counts	RMSZ	# Z > 2
3	NLG	A	1292	-	6,12,12	2.22	1 (16%)	7,15,15	0.93	0
3	NLG	B	1292	-	6,12,12	2.21	1 (16%)	7,15,15	1.14	0

In the following table, the Chirals column lists the number of chiral outliers, the number of chiral centers analysed, the number of these observed in the model and the number defined in the Chemical Component Dictionary. Similar counts are reported in the Torsion and Rings columns. '-' means no outliers of that kind were identified.

Mol	Type	Chain	Res	Link	Chirals	Torsions	Rings
3	NLG	A	1292	-	-	3/7/13/13	-
3	NLG	B	1292	-	-	3/7/13/13	-

All (2) bond length outliers are listed below:

Mol	Chain	Res	Type	Atoms	Z	Observed(Å)	Ideal(Å)
3	A	1292	NLG	C8-C7	-5.40	1.39	1.50
3	B	1292	NLG	C8-C7	-5.38	1.39	1.50

There are no bond angle outliers.

There are no chirality outliers.

5 of 6 torsion outliers are listed below:

Mol	Chain	Res	Type	Atoms
3	A	1292	NLG	C-CA-CB-CG
3	A	1292	NLG	CA-CB-CG-CD
3	B	1292	NLG	C-CA-CB-CG
3	A	1292	NLG	N2-CA-CB-CG
3	B	1292	NLG	N2-CA-CB-CG

There are no ring outliers.

2 monomers are involved in 5 short contacts:

Mol	Chain	Res	Type	Clashes	Symm-Clashes
3	A	1292	NLG	2	0
3	B	1292	NLG	3	0

5.7 Other polymers [i](#)

There are no such residues in this entry.

5.8 Polymer linkage issues [i](#)

There are no chain breaks in this entry.

6 Fit of model and data [i](#)

6.1 Protein, DNA and RNA chains [i](#)

In the following table, the column labelled ‘#RSRZ> 2’ contains the number (and percentage) of RSRZ outliers, followed by percent RSRZ outliers for the chain as percentile scores relative to all X-ray entries and entries of similar resolution. The OWAB column contains the minimum, median, 95th percentile and maximum values of the occupancy-weighted average B-factor per residue. The column labelled ‘Q< 0.9’ lists the number of (and percentage) of residues with an average occupancy less than 0.9.

Mol	Chain	Analysed	<RSRZ>	#RSRZ>2	OWAB(Å ²)	Q<0.9
1	A	284/321 (88%)	0.20	2 (0%) 87 85	58, 72, 86, 88	1 (0%)
1	B	284/321 (88%)	0.20	2 (0%) 87 85	58, 72, 86, 89	0
1	C	285/321 (88%)	0.43	20 (7%) 16 18	58, 72, 86, 89	1 (0%)
2	D	111/112 (99%)	0.41	5 (4%) 33 32	65, 75, 85, 87	1 (0%)
2	E	108/112 (96%)	0.29	1 (0%) 84 81	65, 75, 84, 86	0
2	F	109/112 (97%)	0.12	4 (3%) 41 40	65, 75, 84, 86	0
All	All	1181/1299 (90%)	0.27	34 (2%) 51 49	58, 74, 85, 89	3 (0%)

The worst 5 of 34 RSRZ outliers are listed below:

Mol	Chain	Res	Type	RSRZ
1	C	41	MET	3.3
1	C	291	SER	3.2
1	C	108	GLY	3.1
1	C	265	ILE	3.1
1	C	176	ALA	3.0

6.2 Non-standard residues in protein, DNA, RNA chains [i](#)

There are no non-standard protein/DNA/RNA residues in this entry.

6.3 Carbohydrates [i](#)

There are no carbohydrates in this entry.

6.4 Ligands [i](#)

In the following table, the Atoms column lists the number of modelled atoms in the group and the number defined in the chemical component dictionary. The B-factors column lists the minimum, median, 95th percentile and maximum values of B factors of atoms in the group. The column labelled 'Q< 0.9' lists the number of atoms with occupancy less than 0.9.

Mol	Type	Chain	Res	Atoms	RSCC	RSR	B-factors(\AA^2)	Q<0.9
3	NLG	A	1292	13/13	0.88	0.41	72,72,74,75	0
3	NLG	B	1292	13/13	0.88	0.45	72,73,73,73	0

6.5 Other polymers [i](#)

There are no such residues in this entry.