



Full wwPDB X-ray Structure Validation Report ⓘ

May 22, 2020 – 11:59 am BST

PDB ID : 6JKF
Title : Crystal structure of Serratia marcescens Chitinase B complexed with compound 2-8-s2
Authors : Yang, Q.; Jiang, X.
Deposited on : 2019-02-28
Resolution : 1.99 Å(reported)

This is a Full wwPDB X-ray Structure Validation Report for a publicly released PDB entry.

We welcome your comments at validation@mail.wwpdb.org

A user guide is available at

<https://www.wwpdb.org/validation/2017/XrayValidationReportHelp>

with specific help available everywhere you see the ⓘ symbol.

The following versions of software and data (see [references ⓘ](#)) were used in the production of this report:

MolProbity : 4.02b-467
Mogul : 1.8.5 (274361), CSD as541be (2020)
Xtriage (Phenix) : 1.13
EDS : 2.11
buster-report : 1.1.7 (2018)
Percentile statistics : 20191225.v01 (using entries in the PDB archive December 25th 2019)
Refmac : 5.8.0158
CCP4 : 7.0.044 (Gargrove)
Ideal geometry (proteins) : Engh & Huber (2001)
Ideal geometry (DNA, RNA) : Parkinson et al. (1996)
Validation Pipeline (wwPDB-VP) : 2.11

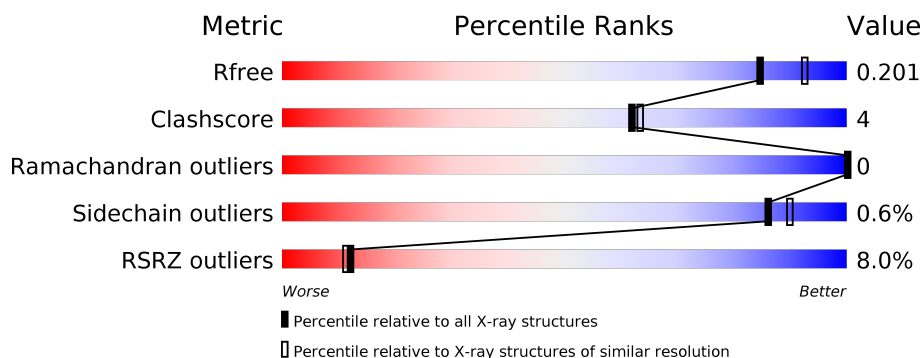
1 Overall quality at a glance

The following experimental techniques were used to determine the structure:

X-RAY DIFFRACTION

The reported resolution of this entry is 1.99 Å.

Percentile scores (ranging between 0-100) for global validation metrics of the entry are shown in the following graphic. The table shows the number of entries on which the scores are based.



Metric	Whole archive (#Entries)	Similar resolution (#Entries, resolution range(Å))
R_{free}	130704	8085 (2.00-2.00)
Clashscore	141614	9178 (2.00-2.00)
Ramachandran outliers	138981	9054 (2.00-2.00)
Sidechain outliers	138945	9053 (2.00-2.00)
RSRZ outliers	127900	7900 (2.00-2.00)

The table below summarises the geometric issues observed across the polymeric chains and their fit to the electron density. The red, orange, yellow and green segments on the lower bar indicate the fraction of residues that contain outliers for ≥ 3 , 2, 1 and 0 types of geometric quality criteria respectively. A grey segment represents the fraction of residues that are not modelled. The numeric value for each fraction is indicated below the corresponding segment, with a dot representing fractions $\leq 5\%$. The upper red bar (where present) indicates the fraction of residues that have poor fit to the electron density. The numeric value is given above the bar.

Mol	Chain	Length	Quality of chain
1	A	497	<div> <div>5%</div> <div> <div></div> <div>94%</div> <div>6%</div> </div> </div>
1	B	497	<div> <div>11%</div> <div> <div></div> <div>91%</div> <div>9%</div> </div> </div>

2 Entry composition [i](#)

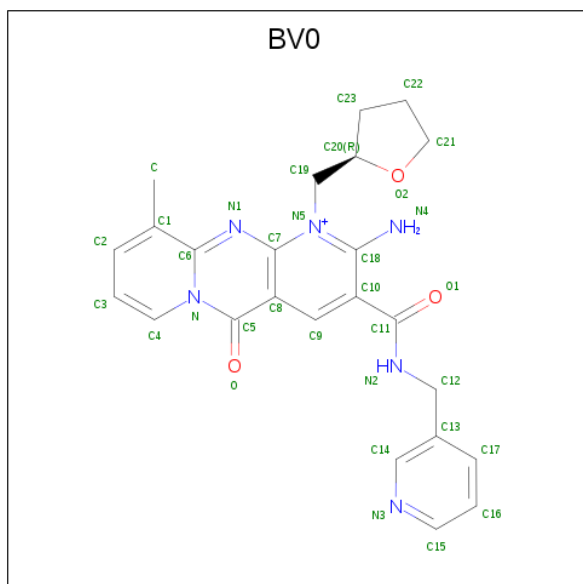
There are 3 unique types of molecules in this entry. The entry contains 8599 atoms, of which 0 are hydrogens and 0 are deuteriums.

In the tables below, the ZeroOcc column contains the number of atoms modelled with zero occupancy, the AltConf column contains the number of residues with at least one atom in alternate conformation and the Trace column contains the number of residues modelled with at most 2 atoms.

- Molecule 1 is a protein called Chitinase.

Mol	Chain	Residues	Atoms					ZeroOcc	AltConf	Trace
1	A	496	Total	C	N	O	S	0	0	0
			3902	2496	658	734	14			
1	B	497	Total	C	N	O	S	0	0	0
			3907	2499	659	735	14			

- Molecule 2 is 6-azanyl-11-methyl-2-oxidanylidene-7-[[[(2R)-oxolan-2-yl]methyl]-N-(pyridin-3-ylmethyl)-1,9-diaza-7-azoniatricyclo[8.4.0.0[^]{3,8}]tetradeca-3(8),4,6,9,11,13-hexaene-5-carboxamide (three-letter code: BV0) (formula: C₂₄H₂₅N₆O₃).



Mol	Chain	Residues	Atoms				ZeroOcc	AltConf
2	A	1	Total	C	N	O	0	0
			33	24	6	3		
2	B	1	Total	C	N	O	0	0
			33	24	6	3		
2	B	1	Total	C	N	O	0	0
			33	24	6	3		

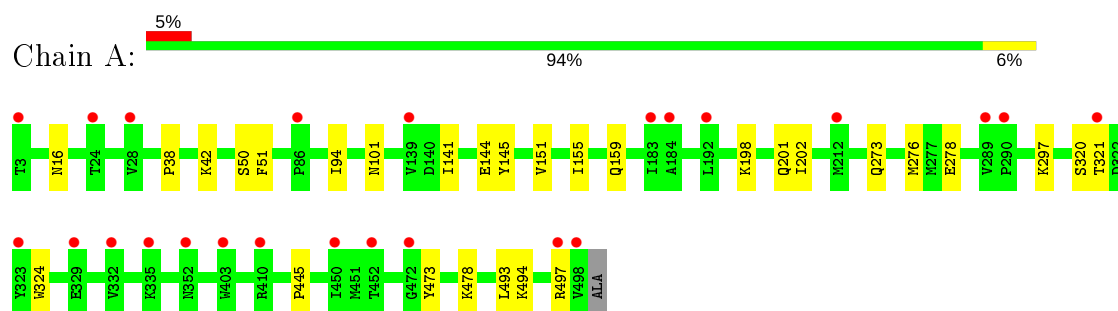
- Molecule 3 is water.

Mol	Chain	Residues	Atoms		ZeroOcc	AltConf
3	A	366	Total 366	O 366	0	0
3	B	325	Total 325	O 325	0	0

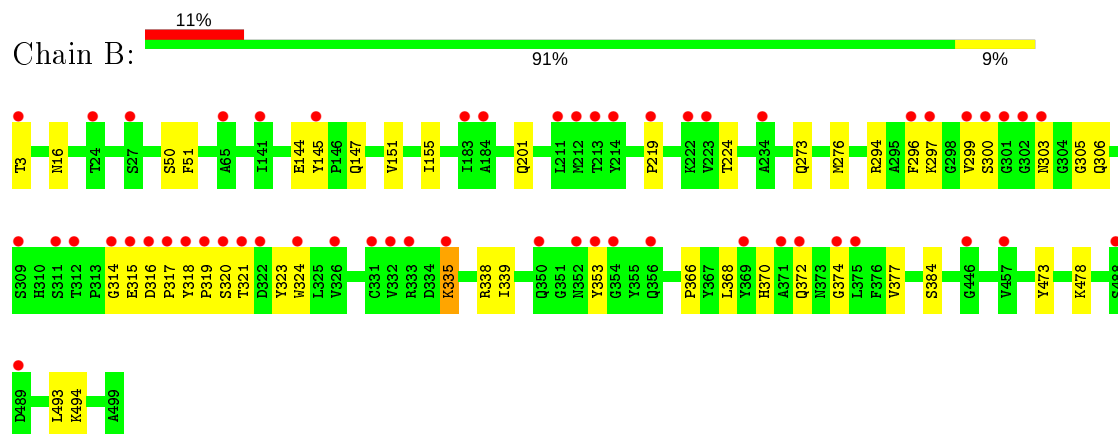
3 Residue-property plots [i](#)

These plots are drawn for all protein, RNA and DNA chains in the entry. The first graphic for a chain summarises the proportions of the various outlier classes displayed in the second graphic. The second graphic shows the sequence view annotated by issues in geometry and electron density. Residues are color-coded according to the number of geometric quality criteria for which they contain at least one outlier: green = 0, yellow = 1, orange = 2 and red = 3 or more. A red dot above a residue indicates a poor fit to the electron density ($RSRZ > 2$). Stretches of 2 or more consecutive residues without any outlier are shown as a green connector. Residues present in the sample, but not in the model, are shown in grey.

• Molecule 1: Chitinase



• Molecule 1: Chitinase



4 Data and refinement statistics

Property	Value	Source
Space group	P 21 21 21	Depositor
Cell constants a, b, c, α , β , γ	55.77Å 105.00Å 185.87Å 90.00° 90.00° 90.00°	Depositor
Resolution (Å)	29.71 – 1.99 29.71 – 1.99	Depositor EDS
% Data completeness (in resolution range)	99.6 (29.71-1.99) 99.6 (29.71-1.99)	Depositor EDS
R_{merge}	(Not available)	Depositor
R_{sym}	0.11	Depositor
$\langle I/\sigma(I) \rangle$ ¹	4.09 (at 2.00Å)	Xtriage
Refinement program	PHENIX (1.11.1 _2575: ???)	Depositor
R, R_{free}	0.182 , 0.201 0.182 , 0.201	Depositor DCC
R_{free} test set	1998 reflections (2.65%)	wwPDB-VP
Wilson B-factor (Å ²)	26.6	Xtriage
Anisotropy	0.605	Xtriage
Bulk solvent k_{sol} (e/Å ³), B_{sol} (Å ²)	0.38 , 50.2	EDS
L-test for twinning ²	$\langle L \rangle = 0.49$, $\langle L^2 \rangle = 0.33$	Xtriage
Estimated twinning fraction	No twinning to report.	Xtriage
F_o, F_c correlation	0.96	EDS
Total number of atoms	8599	wwPDB-VP
Average B, all atoms (Å ²)	30.0	wwPDB-VP

Xtriage's analysis on translational NCS is as follows: *The largest off-origin peak in the Patterson function is 3.44% of the height of the origin peak. No significant pseudotranslation is detected.*

¹Intensities estimated from amplitudes.

²Theoretical values of $\langle |L| \rangle$, $\langle L^2 \rangle$ for acentric reflections are 0.5, 0.333 respectively for untwinned datasets, and 0.375, 0.2 for perfectly twinned datasets.

5 Model quality

5.1 Standard geometry

Bond lengths and bond angles in the following residue types are not validated in this section: BV0

The Z score for a bond length (or angle) is the number of standard deviations the observed value is removed from the expected value. A bond length (or angle) with $|Z| > 5$ is considered an outlier worth inspection. RMSZ is the root-mean-square of all Z scores of the bond lengths (or angles).

Mol	Chain	Bond lengths		Bond angles	
		RMSZ	# Z >5	RMSZ	# Z >5
1	A	0.28	0/4013	0.47	0/5470
1	B	0.38	0/4018	0.55	0/5477
All	All	0.34	0/8031	0.51	0/10947

There are no bond length outliers.

There are no bond angle outliers.

There are no chirality outliers.

There are no planarity outliers.

5.2 Too-close contacts

In the following table, the Non-H and H(model) columns list the number of non-hydrogen atoms and hydrogen atoms in the chain respectively. The H(added) column lists the number of hydrogen atoms added and optimized by MolProbity. The Clashes column lists the number of clashes within the asymmetric unit, whereas Symm-Clashes lists symmetry related clashes.

Mol	Chain	Non-H	H(model)	H(added)	Clashes	Symm-Clashes
1	A	3902	0	3736	24	0
1	B	3907	0	3741	40	0
2	A	33	0	0	1	0
2	B	66	0	0	3	0
3	A	366	0	0	2	0
3	B	325	0	0	2	0
All	All	8599	0	7477	67	0

The all-atom clashscore is defined as the number of clashes found per 1000 atoms (including hydrogen atoms). The all-atom clashscore for this structure is 4.

All (67) close contacts within the same asymmetric unit are listed below, sorted by their clash

magnitude.

Atom-1	Atom-2	Interatomic distance (Å)	Clash overlap (Å)
2:A:501:BV0:O2	2:A:501:BV0:C20	1.63	1.19
2:B:501:BV0:O2	2:B:501:BV0:C20	1.63	1.16
2:B:502:BV0:O2	2:B:502:BV0:C20	1.63	1.16
1:B:323:TYR:OH	1:B:335:LYS:HE2	1.79	0.82
1:A:155:ILE:HG13	1:A:201:GLN:HE21	1.51	0.76
1:B:294:ARG:NH1	1:B:339:ILE:HD11	2.05	0.71
1:B:314:GLY:N	1:B:338:ARG:HH11	1.91	0.69
1:B:353:TYR:O	1:B:370:HIS:NE2	2.25	0.66
1:B:314:GLY:CA	1:B:338:ARG:NH1	2.60	0.65
1:B:314:GLY:HA2	1:B:338:ARG:NH1	2.13	0.63
1:B:314:GLY:CA	1:B:338:ARG:HH11	2.14	0.60
1:B:224:THR:HG22	1:B:296:PHE:CD2	2.36	0.60
1:A:155:ILE:HD11	1:A:202:ILE:HG13	1.83	0.60
1:B:294:ARG:HG2	1:B:339:ILE:CD1	2.32	0.60
1:B:3:THR:N	3:B:602:HOH:O	2.34	0.60
1:B:478:LYS:HE2	1:B:493:LEU:HB2	1.84	0.59
1:B:297:LYS:HD2	1:B:324:TRP:CE2	2.38	0.58
1:A:144:GLU:HA	1:A:145:TYR:CG	2.39	0.57
1:B:299:VAL:CG1	1:B:305:GLY:HA2	2.34	0.57
1:A:297:LYS:HD3	1:A:324:TRP:CE2	2.39	0.57
1:B:314:GLY:H	1:B:338:ARG:HH11	1.50	0.57
1:B:315:GLU:OE1	1:B:319:PRO:HB3	2.04	0.57
1:A:159:GLN:HG2	3:A:904:HOH:O	2.05	0.56
1:B:303:ASN:HB3	1:B:306:GLN:O	2.06	0.55
1:B:144:GLU:HA	1:B:145:TYR:CG	2.42	0.55
1:B:299:VAL:HG12	1:B:305:GLY:HA2	1.90	0.54
1:B:151:VAL:HG12	1:B:155:ILE:HD11	1.91	0.53
1:A:155:ILE:HG13	1:A:201:GLN:NE2	2.24	0.52
1:B:219:PRO:HB2	1:B:314:GLY:HA3	1.92	0.51
1:B:155:ILE:HD13	1:B:201:GLN:HG3	1.91	0.50
1:A:278:GLU:HG3	1:A:445:PRO:HB2	1.94	0.49
1:B:155:ILE:HD13	1:B:201:GLN:OE1	2.12	0.49
1:A:155:ILE:HD12	1:A:201:GLN:HG3	1.95	0.48
1:B:370:HIS:O	1:B:374:GLY:N	2.46	0.47
1:B:201:GLN:HG2	3:B:822:HOH:O	2.13	0.47
1:A:273:GLN:HA	1:A:276:MET:HE2	1.97	0.47
1:B:368:LEU:HB2	1:B:377:VAL:HB	1.97	0.46
1:B:50:SER:HA	1:B:51:PHE:HA	1.72	0.46
1:A:198:LYS:HD3	1:A:201:GLN:NE2	2.30	0.46
1:A:151:VAL:O	1:A:155:ILE:HG12	2.15	0.46
1:A:320:SER:OG	1:A:321:THR:N	2.47	0.46

Continued on next page...

Continued from previous page...

Atom-1	Atom-2	Interatomic distance (Å)	Clash overlap (Å)
1:B:151:VAL:HG12	1:B:155:ILE:CD1	2.45	0.46
1:B:366:PRO:HD3	1:B:384:SER:HB3	1.98	0.46
1:A:478:LYS:HE2	1:A:493:LEU:HB2	1.97	0.45
1:B:50:SER:HB2	1:B:51:PHE:CG	2.51	0.45
1:A:50:SER:HB2	1:A:51:PHE:CG	2.51	0.45
1:B:473:TYR:CD1	1:B:494:LYS:HD3	2.52	0.44
1:B:273:GLN:HA	1:B:276:MET:HE2	2.00	0.44
1:A:50:SER:HA	1:A:51:PHE:HA	1.73	0.44
1:A:38:PRO:O	1:A:42:LYS:HG3	2.18	0.44
1:A:473:TYR:CD1	1:A:494:LYS:HD2	2.53	0.43
1:B:144:GLU:HA	1:B:145:TYR:CD2	2.54	0.43
1:A:94:ILE:HD12	1:A:141:ILE:CD1	2.49	0.43
1:A:201:GLN:HG2	3:A:744:HOH:O	2.18	0.42
1:B:338:ARG:O	1:B:339:ILE:HD13	2.18	0.42
1:A:155:ILE:CD1	1:A:201:GLN:HG3	2.49	0.42
1:A:155:ILE:HD11	1:A:202:ILE:CG1	2.49	0.42
1:B:144:GLU:OE2	2:B:501:BV0:N3	2.53	0.42
1:A:101:ASN:HA	1:A:144:GLU:O	2.20	0.41
1:B:219:PRO:HB2	1:B:314:GLY:CA	2.50	0.41
1:B:370:HIS:CE1	1:B:372:GLN:HG3	2.56	0.41
1:B:320:SER:OG	1:B:321:THR:N	2.52	0.41
1:B:147:GLN:O	1:B:151:VAL:HG23	2.21	0.41
1:A:473:TYR:CD1	1:A:497:ARG:HG2	2.56	0.40
1:B:317:PRO:O	1:B:318:TYR:C	2.59	0.40
1:B:315:GLU:N	1:B:338:ARG:HH12	2.19	0.40
1:A:144:GLU:HA	1:A:145:TYR:CD1	2.56	0.40

There are no symmetry-related clashes.

5.3 Torsion angles [i](#)

5.3.1 Protein backbone [i](#)

In the following table, the Percentiles column shows the percent Ramachandran outliers of the chain as a percentile score with respect to all X-ray entries followed by that with respect to entries of similar resolution.

The Analysed column shows the number of residues for which the backbone conformation was analysed, and the total number of residues.

Mol	Chain	Analysed	Favoured	Allowed	Outliers	Percentiles	
1	A	494/497 (99%)	485 (98%)	9 (2%)	0	100	100
1	B	495/497 (100%)	486 (98%)	9 (2%)	0	100	100
All	All	989/994 (100%)	971 (98%)	18 (2%)	0	100	100

There are no Ramachandran outliers to report.

5.3.2 Protein sidechains ⓘ

In the following table, the Percentiles column shows the percent sidechain outliers of the chain as a percentile score with respect to all X-ray entries followed by that with respect to entries of similar resolution.

The Analysed column shows the number of residues for which the sidechain conformation was analysed, and the total number of residues.

Mol	Chain	Analysed	Rotameric	Outliers	Percentiles	
1	A	403/403 (100%)	402 (100%)	1 (0%)	93	95
1	B	403/403 (100%)	399 (99%)	4 (1%)	76	81
All	All	806/806 (100%)	801 (99%)	5 (1%)	86	90

All (5) residues with a non-rotameric sidechain are listed below:

Mol	Chain	Res	Type
1	A	16	ASN
1	B	16	ASN
1	B	300	SER
1	B	316	ASP
1	B	335	LYS

Some sidechains can be flipped to improve hydrogen bonding and reduce clashes. All (5) such sidechains are listed below:

Mol	Chain	Res	Type
1	A	201	GLN
1	A	352	ASN
1	B	16	ASN
1	B	356	GLN
1	B	373	ASN

5.3.3 RNA ⓘ

There are no RNA molecules in this entry.

5.4 Non-standard residues in protein, DNA, RNA chains ⓘ

There are no non-standard protein/DNA/RNA residues in this entry.

5.5 Carbohydrates ⓘ

There are no carbohydrates in this entry.

5.6 Ligand geometry ⓘ

3 ligands are modelled in this entry.

In the following table, the Counts columns list the number of bonds (or angles) for which Mogul statistics could be retrieved, the number of bonds (or angles) that are observed in the model and the number of bonds (or angles) that are defined in the Chemical Component Dictionary. The Link column lists molecule types, if any, to which the group is linked. The Z score for a bond length (or angle) is the number of standard deviations the observed value is removed from the expected value. A bond length (or angle) with $|Z| > 2$ is considered an outlier worth inspection. RMSZ is the root-mean-square of all Z scores of the bond lengths (or angles).

Mol	Type	Chain	Res	Link	Bond lengths			Bond angles		
					Counts	RMSZ	# Z > 2	Counts	RMSZ	# Z > 2
2	BV0	B	502	-	34,37,37	3.09	18 (52%)	36,53,53	1.38	6 (16%)
2	BV0	B	501	-	34,37,37	3.06	17 (50%)	36,53,53	1.53	9 (25%)
2	BV0	A	501	-	34,37,37	3.06	18 (52%)	36,53,53	1.33	5 (13%)

In the following table, the Chirals column lists the number of chiral outliers, the number of chiral centers analysed, the number of these observed in the model and the number defined in the Chemical Component Dictionary. Similar counts are reported in the Torsion and Rings columns. '-' means no outliers of that kind were identified.

Mol	Type	Chain	Res	Link	Chirals	Torsions	Rings
2	BV0	B	502	-	-	0/13/20/20	0/5/5/5
2	BV0	B	501	-	-	3/13/20/20	0/5/5/5
2	BV0	A	501	-	-	2/13/20/20	0/5/5/5

All (53) bond length outliers are listed below:

Mol	Chain	Res	Type	Atoms	Z	Observed(Å)	Ideal(Å)
2	B	501	BV0	C11-N2	6.62	1.48	1.33
2	A	501	BV0	C11-N2	6.61	1.48	1.33
2	B	502	BV0	C11-N2	6.17	1.47	1.33
2	B	501	BV0	O-C5	5.31	1.37	1.24
2	B	502	BV0	O-C5	5.20	1.37	1.24
2	B	502	BV0	C7-N1	5.16	1.39	1.33
2	B	502	BV0	C18-N4	5.16	1.49	1.33
2	A	501	BV0	C18-N4	5.14	1.49	1.33
2	A	501	BV0	O-C5	5.13	1.37	1.24
2	B	501	BV0	C18-N4	5.13	1.49	1.33
2	A	501	BV0	C23-C20	-5.09	1.25	1.52
2	B	501	BV0	C7-N1	5.09	1.39	1.33
2	B	501	BV0	C23-C20	-5.05	1.25	1.52
2	A	501	BV0	C7-N1	5.01	1.39	1.33
2	B	502	BV0	C23-C20	-4.97	1.26	1.52
2	B	501	BV0	C19-N5	4.92	1.53	1.48
2	B	502	BV0	C19-N5	4.82	1.53	1.48
2	B	502	BV0	O2-C20	4.69	1.63	1.42
2	B	501	BV0	O2-C20	4.67	1.63	1.42
2	A	501	BV0	O2-C20	4.67	1.63	1.42
2	A	501	BV0	C19-N5	4.55	1.52	1.48
2	B	501	BV0	O2-C21	-4.48	1.29	1.42
2	A	501	BV0	O2-C21	-4.46	1.29	1.42
2	B	502	BV0	C10-C11	4.45	1.59	1.50
2	B	502	BV0	O2-C21	-4.43	1.29	1.42
2	A	501	BV0	C10-C11	4.12	1.58	1.50
2	B	502	BV0	C6-N1	4.07	1.38	1.33
2	B	501	BV0	C10-C11	3.81	1.58	1.50
2	A	501	BV0	C6-N1	3.80	1.38	1.33
2	B	501	BV0	C6-N1	3.72	1.38	1.33
2	B	502	BV0	C9-C8	3.67	1.47	1.41
2	A	501	BV0	C9-C8	3.53	1.47	1.41
2	B	501	BV0	C9-C8	3.36	1.47	1.41
2	B	502	BV0	C9-C10	3.03	1.41	1.37
2	B	501	BV0	O1-C11	-2.97	1.17	1.23
2	A	501	BV0	O1-C11	-2.95	1.17	1.23
2	A	501	BV0	C1-C6	2.94	1.47	1.43
2	B	502	BV0	C1-C6	2.90	1.47	1.43
2	B	502	BV0	O1-C11	-2.84	1.17	1.23
2	A	501	BV0	C9-C10	2.77	1.41	1.37
2	B	501	BV0	C1-C6	2.72	1.47	1.43
2	B	501	BV0	C9-C10	2.70	1.41	1.37
2	A	501	BV0	C4-C3	2.66	1.42	1.35

Continued on next page...

Continued from previous page...

Mol	Chain	Res	Type	Atoms	Z	Observed(Å)	Ideal(Å)
2	B	501	BV0	C4-C3	2.65	1.42	1.35
2	B	502	BV0	C4-C3	2.65	1.42	1.35
2	B	502	BV0	C-C1	2.65	1.56	1.51
2	B	501	BV0	C-C1	2.52	1.55	1.51
2	A	501	BV0	C-C1	2.48	1.55	1.51
2	A	501	BV0	C16-C15	2.21	1.44	1.37
2	B	502	BV0	C16-C15	2.17	1.44	1.37
2	B	501	BV0	C16-C15	2.09	1.43	1.37
2	B	502	BV0	C5-N	2.04	1.41	1.37
2	A	501	BV0	C5-N	2.00	1.41	1.37

All (20) bond angle outliers are listed below:

Mol	Chain	Res	Type	Atoms	Z	Observed(°)	Ideal(°)
2	B	501	BV0	C15-N3-C14	4.14	124.02	116.85
2	B	501	BV0	C10-C9-C8	-3.48	116.65	122.29
2	A	501	BV0	C15-N3-C14	3.43	122.78	116.85
2	A	501	BV0	C10-C9-C8	-3.32	116.90	122.29
2	B	502	BV0	C10-C9-C8	-3.25	117.02	122.29
2	B	502	BV0	C15-N3-C14	3.21	122.40	116.85
2	B	501	BV0	C19-N5-C7	3.17	121.25	118.41
2	B	501	BV0	C4-N-C6	2.78	122.01	119.84
2	B	501	BV0	C19-N5-C18	-2.47	117.60	121.45
2	A	501	BV0	C7-N1-C6	2.43	120.79	116.17
2	A	501	BV0	C4-N-C6	2.41	121.72	119.84
2	B	501	BV0	C7-N1-C6	2.38	120.71	116.17
2	B	502	BV0	C7-N1-C6	2.35	120.65	116.17
2	B	502	BV0	C4-N-C6	2.28	121.62	119.84
2	B	502	BV0	O1-C11-N2	-2.27	118.09	122.61
2	A	501	BV0	C9-C8-C7	2.25	119.92	117.11
2	B	501	BV0	C9-C8-C7	2.24	119.90	117.11
2	B	502	BV0	C9-C8-C7	2.23	119.90	117.11
2	B	501	BV0	C4-N-C5	-2.07	117.19	119.36
2	B	501	BV0	C13-C14-N3	-2.02	119.78	123.72

There are no chirality outliers.

All (5) torsion outliers are listed below:

Mol	Chain	Res	Type	Atoms
2	B	501	BV0	N5-C19-C20-O2
2	B	501	BV0	C20-C19-N5-C7
2	B	501	BV0	C20-C19-N5-C18

Continued on next page...

Continued from previous page...

Mol	Chain	Res	Type	Atoms
2	A	501	BV0	N5-C19-C20-C23
2	A	501	BV0	N5-C19-C20-O2

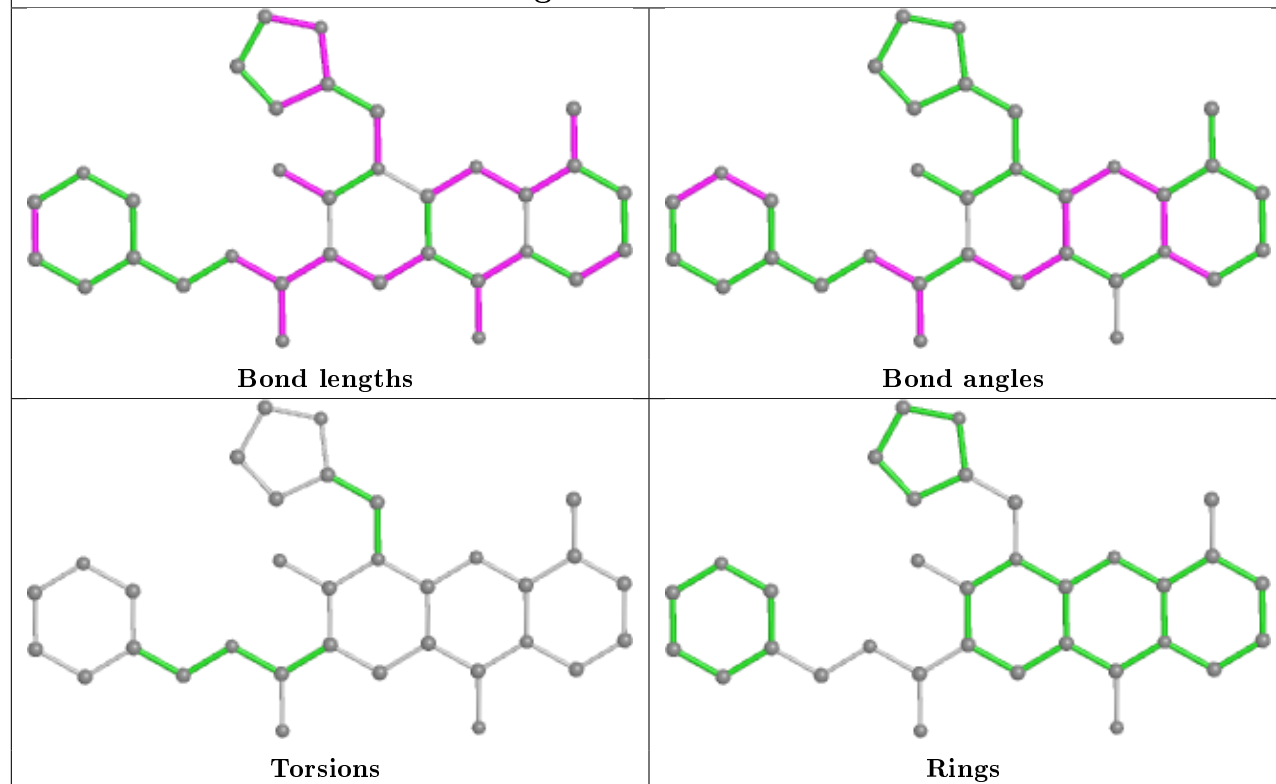
There are no ring outliers.

3 monomers are involved in 4 short contacts:

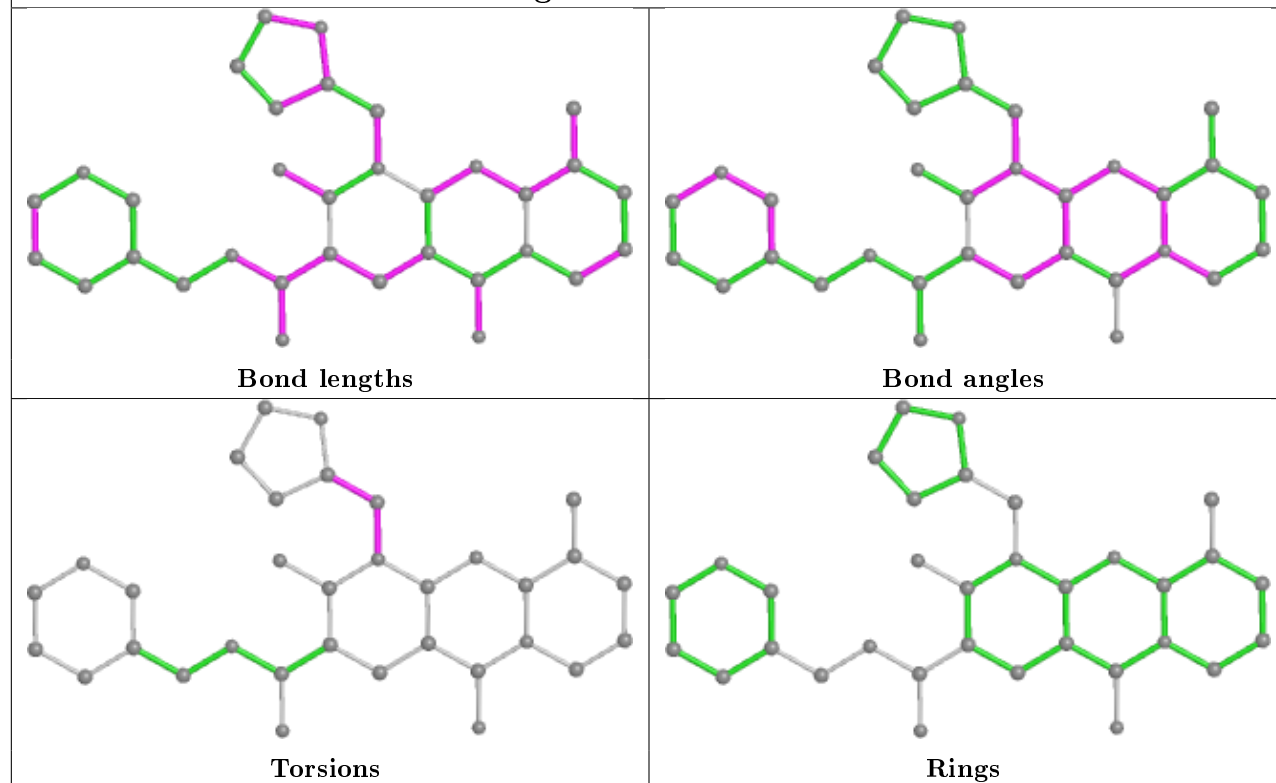
Mol	Chain	Res	Type	Clashes	Symm-Clashes
2	B	502	BV0	1	0
2	B	501	BV0	2	0
2	A	501	BV0	1	0

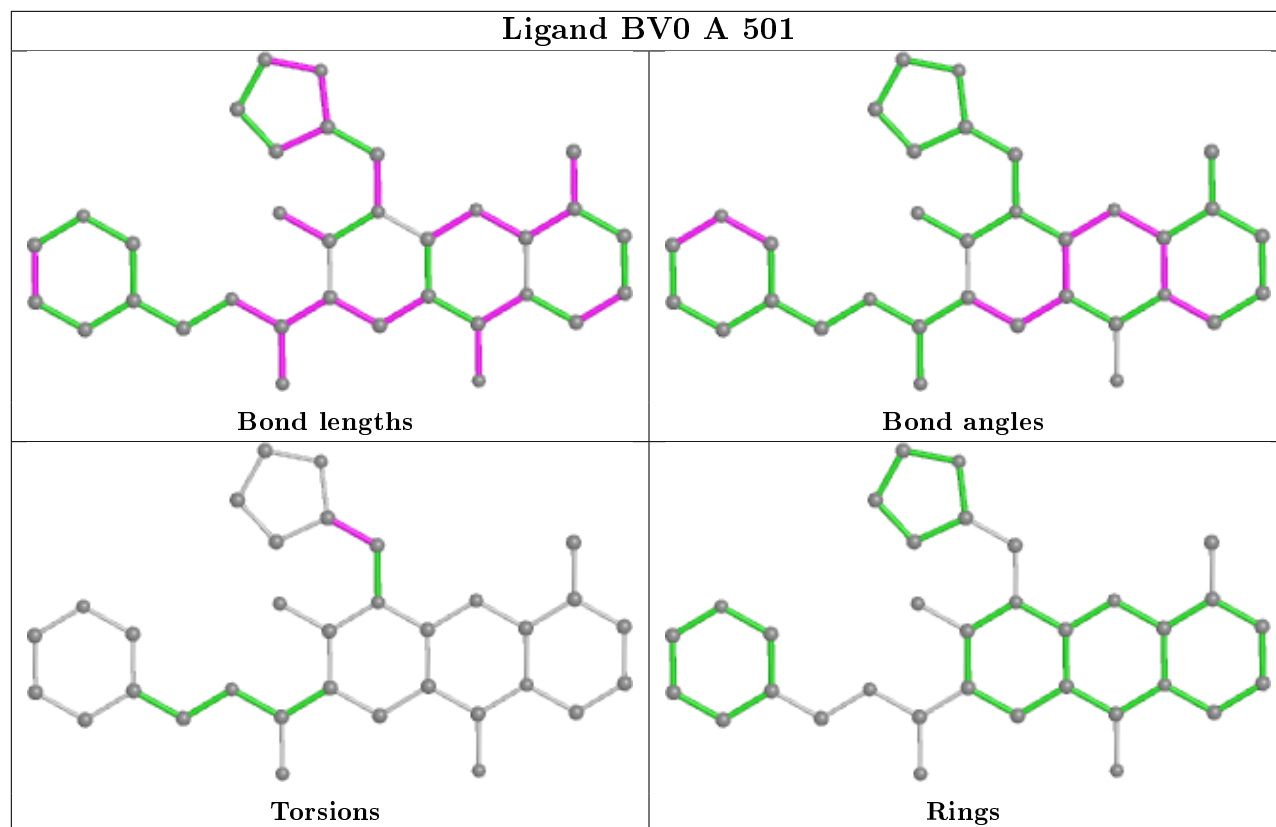
The following is a two-dimensional graphical depiction of Mogul quality analysis of bond lengths, bond angles, torsion angles, and ring geometry for all instances of the Ligand of Interest. In addition, ligands with molecular weight > 250 and outliers as shown on the validation Tables will also be included. For torsion angles, if less than 5% of the Mogul distribution of torsion angles is within 10 degrees of the torsion angle in question, then that torsion angle is considered an outlier. Any bond that is central to one or more torsion angles identified as an outlier by Mogul will be highlighted in the graph. For rings, the root-mean-square deviation (RMSD) between the ring in question and similar rings identified by Mogul is calculated over all ring torsion angles. If the average RMSD is greater than 60 degrees and the minimal RMSD between the ring in question and any Mogul-identified rings is also greater than 60 degrees, then that ring is considered an outlier. The outliers are highlighted in purple. The color gray indicates Mogul did not find sufficient equivalents in the CSD to analyse the geometry.

Ligand BV0 B 502



Ligand BV0 B 501





5.7 Other polymers [i](#)

There are no such residues in this entry.

5.8 Polymer linkage issues [i](#)

There are no chain breaks in this entry.

6 Fit of model and data

6.1 Protein, DNA and RNA chains

In the following table, the column labelled ‘#RSRZ> 2’ contains the number (and percentage) of RSRZ outliers, followed by percent RSRZ outliers for the chain as percentile scores relative to all X-ray entries and entries of similar resolution. The OWAB column contains the minimum, median, 95th percentile and maximum values of the occupancy-weighted average B-factor per residue. The column labelled ‘Q< 0.9’ lists the number of (and percentage) of residues with an average occupancy less than 0.9.

Mol	Chain	Analysed	<RSRZ>	#RSRZ>2	OWAB(Å ²)	Q<0.9
1	A	496/497 (99%)	0.28	24 (4%) 30 29	16, 28, 45, 58	0
1	B	497/497 (100%)	0.58	55 (11%) 5 4	18, 28, 58, 71	0
All	All	993/994 (99%)	0.43	79 (7%) 12 11	16, 28, 51, 71	0

All (79) RSRZ outliers are listed below:

Mol	Chain	Res	Type	RSRZ
1	B	319	PRO	7.8
1	B	314	GLY	7.2
1	B	374	GLY	7.0
1	B	332	VAL	6.4
1	B	300	SER	6.1
1	B	219	PRO	5.6
1	B	369	TYR	5.6
1	B	303	ASN	5.4
1	B	372	GLN	5.3
1	B	350	GLN	5.0
1	B	326	VAL	4.9
1	B	222	LYS	4.5
1	A	497	ARG	4.5
1	B	371	ALA	4.5
1	B	335	LYS	4.5
1	B	318	TYR	4.2
1	B	24	THR	3.8
1	B	324	TRP	3.7
1	B	333	ARG	3.7
1	B	354	GLY	3.7
1	B	234	ALA	3.6
1	B	296	PHE	3.5
1	B	223	VAL	3.5
1	B	352	ASN	3.5

Continued on next page...

Continued from previous page...

Mol	Chain	Res	Type	RSRZ
1	B	316	ASP	3.3
1	B	315	GLU	3.2
1	B	446	GLY	3.1
1	B	27	SER	3.1
1	A	352	ASN	3.1
1	A	86	PRO	3.0
1	B	320	SER	2.9
1	B	375	LEU	2.9
1	A	323	TYR	2.9
1	B	299	VAL	2.8
1	A	335	LYS	2.8
1	B	309	SER	2.8
1	A	184	ALA	2.8
1	A	321	THR	2.8
1	B	65	ALA	2.7
1	B	141	ILE	2.7
1	B	321	THR	2.7
1	B	302	GLY	2.7
1	B	212	MET	2.6
1	B	488	SER	2.6
1	B	184	ALA	2.6
1	A	450	ILE	2.6
1	A	452	THR	2.6
1	B	312	THR	2.6
1	A	183	ILE	2.5
1	B	356	GLN	2.5
1	A	329	GLU	2.4
1	B	489	ASP	2.4
1	A	139	VAL	2.4
1	B	322	ASP	2.3
1	A	28	VAL	2.3
1	A	472	GLY	2.3
1	B	353	TYR	2.3
1	A	212	MET	2.3
1	A	498	VAL	2.3
1	A	289	VAL	2.2
1	B	3	THR	2.2
1	A	24	THR	2.2
1	B	457	VAL	2.2
1	B	183	ILE	2.2
1	B	145	TYR	2.2
1	B	214	TYR	2.2

Continued on next page...

Continued from previous page...

Mol	Chain	Res	Type	RSRZ
1	A	290	PRO	2.2
1	A	3	THR	2.2
1	B	311	SER	2.1
1	A	332	VAL	2.1
1	B	317	PRO	2.1
1	B	213	THR	2.1
1	B	211	LEU	2.1
1	A	403	TRP	2.1
1	A	192	LEU	2.1
1	B	331	CYS	2.1
1	B	297	LYS	2.1
1	A	410	ARG	2.0
1	B	301	GLY	2.0

6.2 Non-standard residues in protein, DNA, RNA chains [i](#)

There are no non-standard protein/DNA/RNA residues in this entry.

6.3 Carbohydrates [i](#)

There are no carbohydrates in this entry.

6.4 Ligands [i](#)

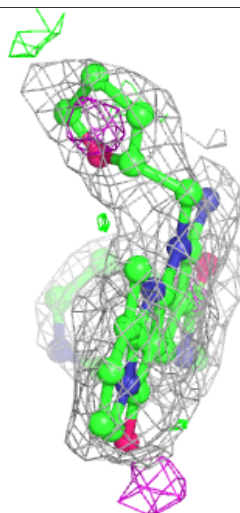
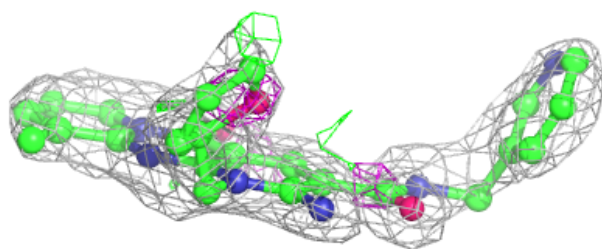
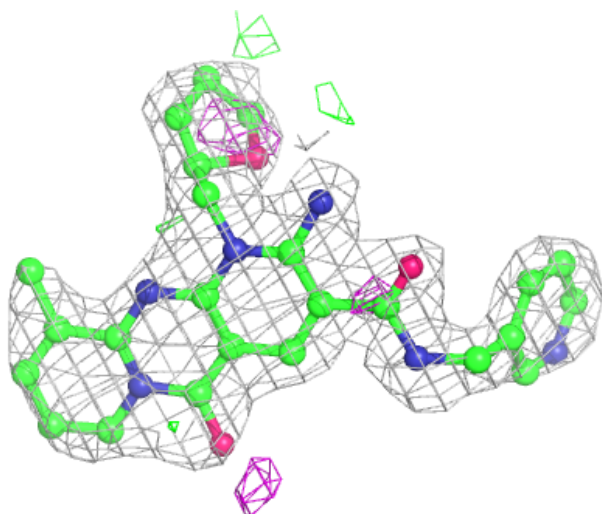
In the following table, the Atoms column lists the number of modelled atoms in the group and the number defined in the chemical component dictionary. The B-factors column lists the minimum, median, 95th percentile and maximum values of B factors of atoms in the group. The column labelled 'Q< 0.9' lists the number of atoms with occupancy less than 0.9.

Mol	Type	Chain	Res	Atoms	RSCC	RSR	B-factors(\AA^2)	Q<0.9
2	BV0	B	502	33/33	0.82	0.21	33,43,47,53	0
2	BV0	B	501	33/33	0.89	0.14	28,40,66,69	0
2	BV0	A	501	33/33	0.95	0.14	25,30,40,48	0

The following is a graphical depiction of the model fit to experimental electron density of all instances of the Ligand of Interest. In addition, ligands with molecular weight > 250 and outliers as shown on the geometry validation Tables will also be included. Each fit is shown from different orientation to approximate a three-dimensional view.

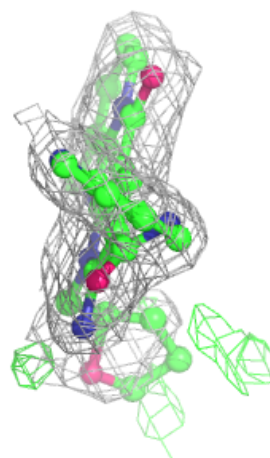
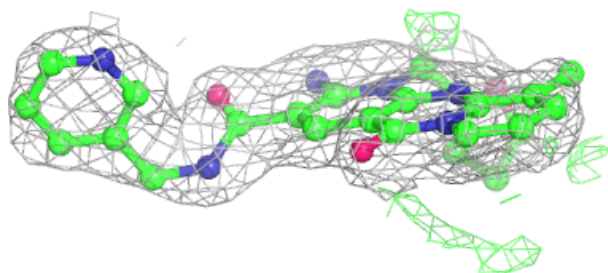
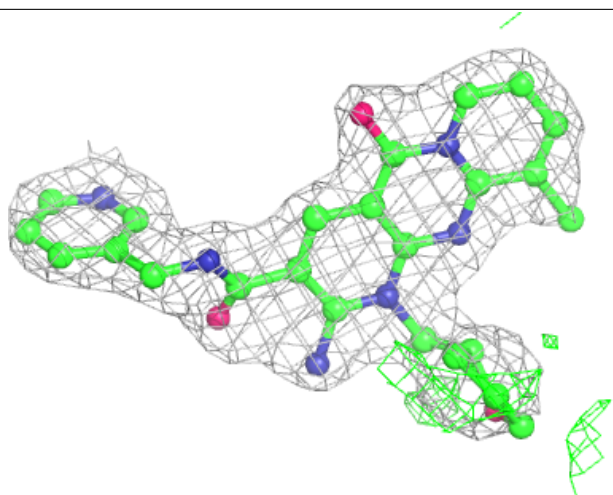
Electron density around BV0 B 502:

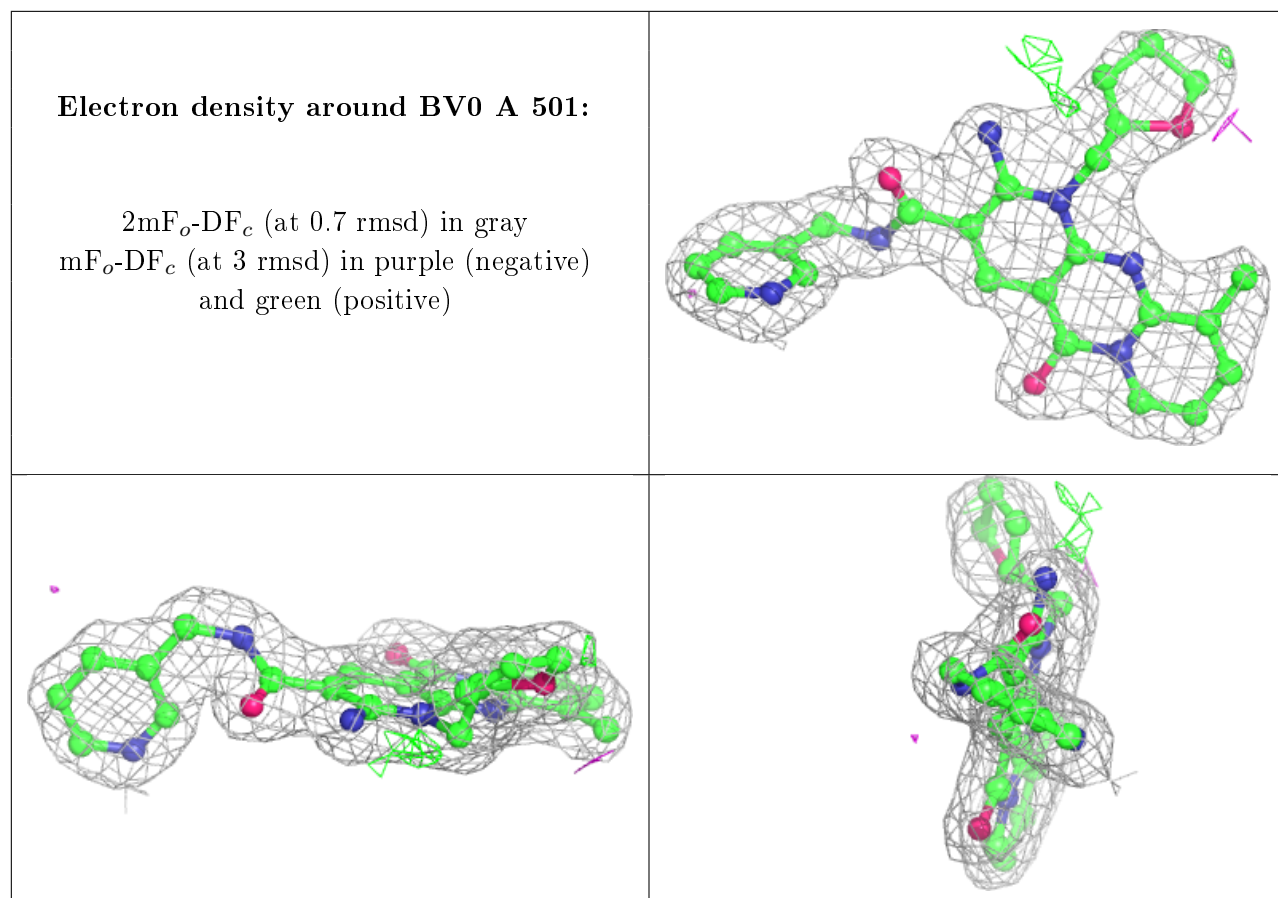
$2mF_o-DF_c$ (at 0.7 rmsd) in gray
 mF_o-DF_c (at 3 rmsd) in purple (negative)
and green (positive)



Electron density around BV0 B 501:

$2mF_o-DF_c$ (at 0.7 rmsd) in gray
 mF_o-DF_c (at 3 rmsd) in purple (negative)
and green (positive)





6.5 Other polymers ⓘ

There are no such residues in this entry.