



# Full wwPDB X-ray Structure Validation Report ⓘ

May 15, 2020 – 09:55 pm BST

PDB ID : 5JLA  
Title : Crystal Structure of Ribose-5-phosphate Isomerase from Brucella melitensis 16M  
Authors : Seattle Structural Genomics Center for Infectious Disease; SSGCID; Seattle Structural Genomics Center for Infectious Disease (SSGCID)  
Deposited on : 2016-04-26  
Resolution : 1.45 Å(reported)

This is a Full wwPDB X-ray Structure Validation Report for a publicly released PDB entry.

We welcome your comments at [validation@mail.wwpdb.org](mailto:validation@mail.wwpdb.org)

A user guide is available at

<https://www.wwpdb.org/validation/2017/XrayValidationReportHelp>

with specific help available everywhere you see the ⓘ symbol.

---

The following versions of software and data (see [references ⓘ](#)) were used in the production of this report:

MolProbity : 4.02b-467  
Mogul : 1.8.5 (274361), CSD as541be (2020)  
Xtriage (Phenix) : 1.13  
EDS : 2.11  
buster-report : 1.1.7 (2018)  
Percentile statistics : 20191225.v01 (using entries in the PDB archive December 25th 2019)  
Refmac : 5.8.0158  
CCP4 : 7.0.044 (Gargrove)  
Ideal geometry (proteins) : Engh & Huber (2001)  
Ideal geometry (DNA, RNA) : Parkinson et al. (1996)  
Validation Pipeline (wwPDB-VP) : 2.11

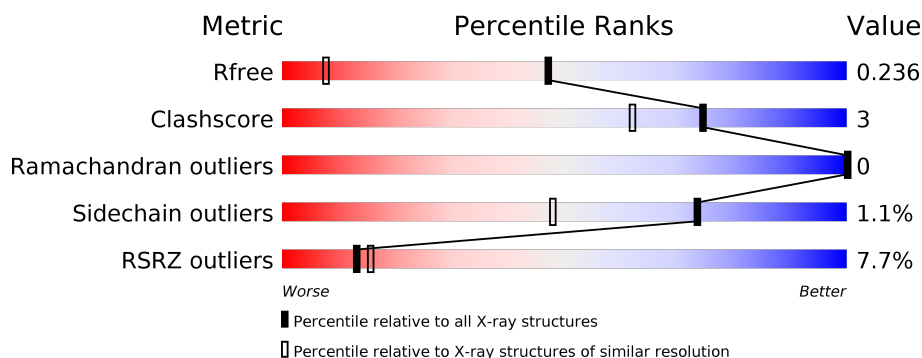
# 1 Overall quality at a glance

The following experimental techniques were used to determine the structure:

## *X-RAY DIFFRACTION*

The reported resolution of this entry is 1.45 Å.

Percentile scores (ranging between 0-100) for global validation metrics of the entry are shown in the following graphic. The table shows the number of entries on which the scores are based.



Metric	Whole archive (#Entries)	Similar resolution (#Entries, resolution range(Å))
$R_{free}$	130704	1156 (1.46-1.46)
Clashscore	141614	1202 (1.46-1.46)
Ramachandran outliers	138981	1178 (1.46-1.46)
Sidechain outliers	138945	1178 (1.46-1.46)
RSRZ outliers	127900	1139 (1.46-1.46)

The table below summarises the geometric issues observed across the polymeric chains and their fit to the electron density. The red, orange, yellow and green segments on the lower bar indicate the fraction of residues that contain outliers for  $\geq 3$ , 2, 1 and 0 types of geometric quality criteria respectively. A grey segment represents the fraction of residues that are not modelled. The numeric value for each fraction is indicated below the corresponding segment, with a dot representing fractions  $\leq 5\%$ . The upper red bar (where present) indicates the fraction of residues that have poor fit to the electron density. The numeric value is given above the bar.

Mol	Chain	Length	Quality of chain
1	A	274	
1	B	274	
1	C	274	
1	D	274	

## 2 Entry composition

There are 3 unique types of molecules in this entry. The entry contains 8601 atoms, of which 0 are hydrogens and 0 are deuteriums.

In the tables below, the ZeroOcc column contains the number of atoms modelled with zero occupancy, the AltConf column contains the number of residues with at least one atom in alternate conformation and the Trace column contains the number of residues modelled with at most 2 atoms.

- Molecule 1 is a protein called Putative short-chain dehydrogenase/reductase.

Mol	Chain	Residues	Atoms					ZeroOcc	AltConf	Trace
1	A	257	Total	C	N	O	S	0	7	0
			1854	1157	338	351	8			
1	B	258	Total	C	N	O	S	0	4	0
			1841	1146	336	351	8			
1	C	258	Total	C	N	O	S	0	6	0
			1848	1153	331	356	8			
1	D	259	Total	C	N	O	S	0	4	0
			1845	1149	333	355	8			

There are 32 discrepancies between the modelled and reference sequences:

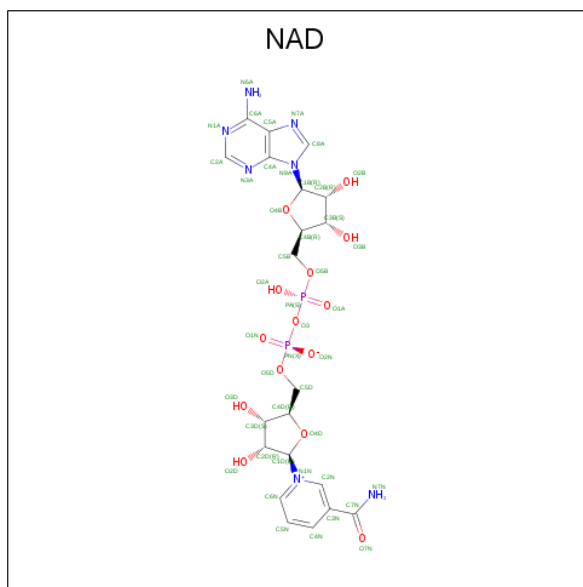
Chain	Residue	Modelled	Actual	Comment	Reference
A	-7	MET	-	initiating methionine	UNP Q13GR0
A	-6	ALA	-	expression tag	UNP Q13GR0
A	-5	HIS	-	expression tag	UNP Q13GR0
A	-4	HIS	-	expression tag	UNP Q13GR0
A	-3	HIS	-	expression tag	UNP Q13GR0
A	-2	HIS	-	expression tag	UNP Q13GR0
A	-1	HIS	-	expression tag	UNP Q13GR0
A	0	HIS	-	expression tag	UNP Q13GR0
B	-7	MET	-	initiating methionine	UNP Q13GR0
B	-6	ALA	-	expression tag	UNP Q13GR0
B	-5	HIS	-	expression tag	UNP Q13GR0
B	-4	HIS	-	expression tag	UNP Q13GR0
B	-3	HIS	-	expression tag	UNP Q13GR0
B	-2	HIS	-	expression tag	UNP Q13GR0
B	-1	HIS	-	expression tag	UNP Q13GR0
B	0	HIS	-	expression tag	UNP Q13GR0
C	-7	MET	-	initiating methionine	UNP Q13GR0
C	-6	ALA	-	expression tag	UNP Q13GR0
C	-5	HIS	-	expression tag	UNP Q13GR0
C	-4	HIS	-	expression tag	UNP Q13GR0
C	-3	HIS	-	expression tag	UNP Q13GR0

*Continued on next page...*

Continued from previous page...

Chain	Residue	Modelled	Actual	Comment	Reference
C	-2	HIS	-	expression tag	UNP Q13GR0
C	-1	HIS	-	expression tag	UNP Q13GR0
C	0	HIS	-	expression tag	UNP Q13GR0
D	-7	MET	-	initiating methionine	UNP Q13GR0
D	-6	ALA	-	expression tag	UNP Q13GR0
D	-5	HIS	-	expression tag	UNP Q13GR0
D	-4	HIS	-	expression tag	UNP Q13GR0
D	-3	HIS	-	expression tag	UNP Q13GR0
D	-2	HIS	-	expression tag	UNP Q13GR0
D	-1	HIS	-	expression tag	UNP Q13GR0
D	0	HIS	-	expression tag	UNP Q13GR0

- Molecule 2 is NICOTINAMIDE-ADENINE-DINUCLEOTIDE (three-letter code: NAD) (formula:  $C_{21}H_{27}N_7O_{14}P_2$ ).

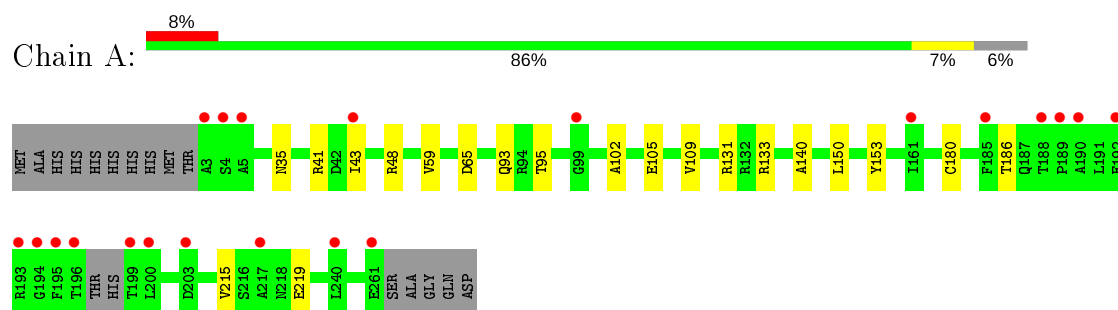


Mol	Chain	Residues	Atoms		ZeroOcc	AltConf
3	A	251	Total 258	O 258	0	7
3	B	248	Total 249	O 249	0	1
3	C	254	Total 256	O 256	0	2
3	D	267	Total 274	O 274	0	7

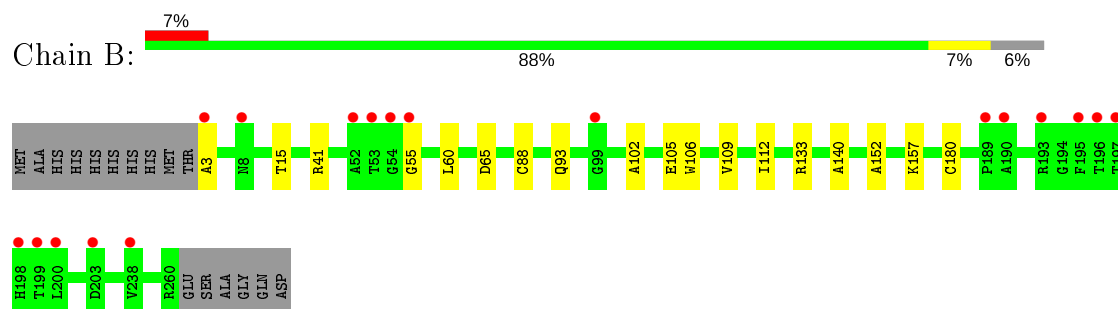
### 3 Residue-property plots [i](#)

These plots are drawn for all protein, RNA and DNA chains in the entry. The first graphic for a chain summarises the proportions of the various outlier classes displayed in the second graphic. The second graphic shows the sequence view annotated by issues in geometry and electron density. Residues are color-coded according to the number of geometric quality criteria for which they contain at least one outlier: green = 0, yellow = 1, orange = 2 and red = 3 or more. A red dot above a residue indicates a poor fit to the electron density ( $RSRZ > 2$ ). Stretches of 2 or more consecutive residues without any outlier are shown as a green connector. Residues present in the sample, but not in the model, are shown in grey.

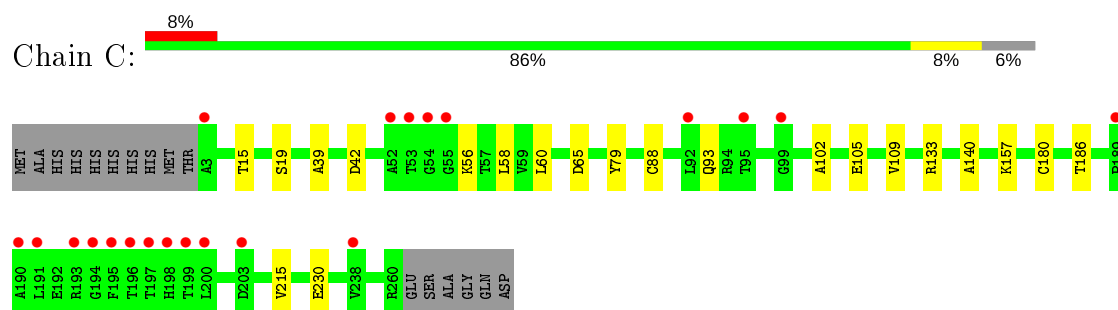
- Molecule 1: Putative short-chain dehydrogenase/reductase



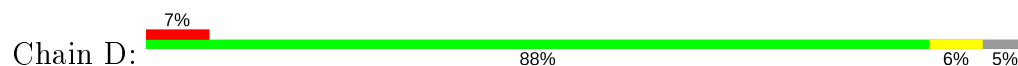
- Molecule 1: Putative short-chain dehydrogenase/reductase

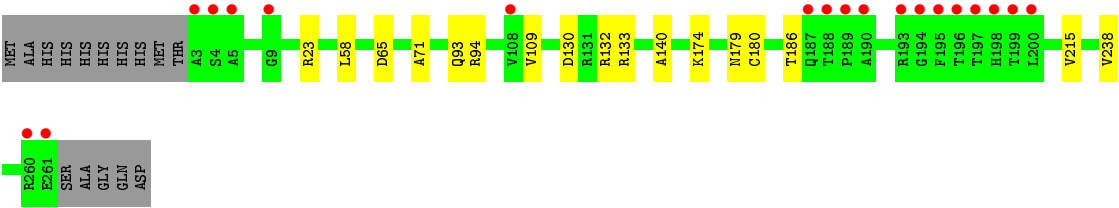


- Molecule 1: Putative short-chain dehydrogenase/reductase



- Molecule 1: Putative short-chain dehydrogenase/reductase





## 4 Data and refinement statistics

Property	Value	Source
Space group	C 1 2 1	Depositor
Cell constants a, b, c, $\alpha$ , $\beta$ , $\gamma$	126.48 Å   109.96 Å   64.99 Å 90.00°   93.90°   90.00°	Depositor
Resolution (Å)	41.93 – 1.45 41.93 – 1.45	Depositor EDS
% Data completeness (in resolution range)	98.4 (41.93-1.45) 98.6 (41.93-1.45)	Depositor EDS
$R_{merge}$	(Not available)	Depositor
$R_{sym}$	(Not available)	Depositor
$\langle I/\sigma(I) \rangle$ <sup>1</sup>	2.73 (at 1.45 Å)	Xtriage
Refinement program	PHENIX dev_2356	Depositor
R, $R_{free}$	0.206   ,   0.236 0.206   ,   0.236	Depositor DCC
$R_{free}$ test set	2101 reflections (1.36%)	wwPDB-VP
Wilson B-factor (Å <sup>2</sup> )	12.1	Xtriage
Anisotropy	0.415	Xtriage
Bulk solvent $k_{sol}$ (e/Å <sup>3</sup> ), $B_{sol}$ (Å <sup>2</sup> )	0.36 , 58.0	EDS
L-test for twinning <sup>2</sup>	$\langle  L  \rangle = 0.51$ , $\langle L^2 \rangle = 0.34$	Xtriage
Estimated twinning fraction	No twinning to report.	Xtriage
$F_o, F_c$ correlation	0.95	EDS
Total number of atoms	8601	wwPDB-VP
Average B, all atoms (Å <sup>2</sup> )	18.0	wwPDB-VP

Xtriage's analysis on translational NCS is as follows: *The analyses of the Patterson function reveals a significant off-origin peak that is 42.88 % of the origin peak, indicating pseudo-translational symmetry. The chance of finding a peak of this or larger height randomly in a structure without pseudo-translational symmetry is equal to 1.9124e-04. The detected translational NCS is most likely also responsible for the elevated intensity ratio.*

<sup>1</sup> Intensities estimated from amplitudes.

<sup>2</sup> Theoretical values of  $\langle |L| \rangle$ ,  $\langle L^2 \rangle$  for acentric reflections are 0.5, 0.333 respectively for untwinned datasets, and 0.375, 0.2 for perfectly twinned datasets.

## 5 Model quality [i](#)

### 5.1 Standard geometry [i](#)

Bond lengths and bond angles in the following residue types are not validated in this section: NAD

The Z score for a bond length (or angle) is the number of standard deviations the observed value is removed from the expected value. A bond length (or angle) with  $|Z| > 5$  is considered an outlier worth inspection. RMSZ is the root-mean-square of all Z scores of the bond lengths (or angles).

Mol	Chain	Bond lengths		Bond angles	
		RMSZ	$\# Z  > 5$	RMSZ	$\# Z  > 5$
1	A	0.39	0/1900	0.61	0/2587
1	B	0.40	0/1880	0.61	0/2563
1	C	0.39	0/1893	0.61	0/2582
1	D	0.38	0/1883	0.63	0/2568
All	All	0.39	0/7556	0.61	0/10300

There are no bond length outliers.

There are no bond angle outliers.

There are no chirality outliers.

There are no planarity outliers.

### 5.2 Too-close contacts [i](#)

In the following table, the Non-H and H(model) columns list the number of non-hydrogen atoms and hydrogen atoms in the chain respectively. The H(added) column lists the number of hydrogen atoms added and optimized by MolProbity. The Clashes column lists the number of clashes within the asymmetric unit, whereas Symm-Clashes lists symmetry related clashes.

Mol	Chain	Non-H	H(model)	H(added)	Clashes	Symm-Clashes
1	A	1854	0	1862	15	0
1	B	1841	0	1834	12	0
1	C	1848	0	1839	12	0
1	D	1845	0	1833	9	0
2	A	44	0	25	1	0
2	B	44	0	25	3	0
2	C	44	0	25	2	0
2	D	44	0	25	0	0
3	A	258	0	0	4	1

*Continued on next page...*

*Continued from previous page...*

Mol	Chain	Non-H	H(model)	H(added)	Clashes	Symm-Clashes
3	B	249	0	0	3	0
3	C	256	0	0	2	1
3	D	274	0	0	3	0
All	All	8601	0	7468	48	1

The all-atom clashscore is defined as the number of clashes found per 1000 atoms (including hydrogen atoms). The all-atom clashscore for this structure is 3.

All (48) close contacts within the same asymmetric unit are listed below, sorted by their clash magnitude.

Atom-1	Atom-2	Interatomic distance (Å)	Clash overlap (Å)
1:A:95:THR:HG22	1:A:150[A]:LEU:HD21	1.75	0.67
1:C:42:ASP:OD1	3:C:501:HOH:O	2.12	0.65
1:C:230[B]:GLU:OE1	3:C:502:HOH:O	2.15	0.64
1:D:130:ASP:OD2	3:D:501:HOH:O	2.14	0.64
1:B:41:ARG:NH1	3:B:503:HOH:O	2.30	0.63
1:A:131:ARG:NH1	3:A:504:HOH:O	2.33	0.62
1:A:43[B]:ILE:H	1:A:43[B]:ILE:HD12	1.71	0.56
1:A:41[A]:ARG:HD2	2:A:401:NAD:C5A	2.36	0.56
1:A:43[A]:ILE:HD13	1:A:59:VAL:HG22	1.89	0.55
1:B:60:LEU:O	2:B:401:NAD:H2A	2.07	0.55
1:A:35[B]:ASN:ND2	3:A:505:HOH:O	2.35	0.54
1:D:93:GLN:HB3	1:D:109:VAL:HG21	1.91	0.53
1:A:93:GLN:HB3	1:A:109:VAL:HG21	1.91	0.52
1:C:102:ALA:HB3	1:C:105:GLU:HG3	1.94	0.50
1:A:219:GLU:OE2	3:A:501:HOH:O	2.20	0.49
1:A:48:ARG:NH1	3:A:509:HOH:O	2.44	0.49
1:C:93:GLN:HB3	1:C:109:VAL:HG21	1.92	0.49
1:B:93:GLN:HB3	1:B:109:VAL:HG21	1.95	0.49
1:B:55:GLY:O	3:B:501:HOH:O	2.20	0.48
1:A:93:GLN:HG3	1:A:150[A]:LEU:HD22	1.96	0.48
1:A:150[A]:LEU:HB3	1:A:153:TYR:HB3	1.96	0.48
1:B:3:ALA:N	3:B:507:HOH:O	2.46	0.48
1:C:60:LEU:O	2:C:401:NAD:H2A	2.15	0.47
1:B:15:THR:O	1:B:88:CYS:HB2	2.14	0.46
1:D:58:LEU:HD21	1:D:71:ALA:HB1	1.98	0.46
1:A:102:ALA:HB3	1:A:105:GLU:HG3	1.96	0.46
1:B:106:TRP:CD1	1:B:152:ALA:HB2	2.51	0.46
1:D:140:ALA:HB2	1:D:180[B]:CYS:SG	2.55	0.46
1:C:56:LYS:HD3	1:C:79:TYR:CE1	2.51	0.46
1:C:140:ALA:HA	1:C:157:LYS:HD2	1.98	0.45

*Continued on next page...*

Continued from previous page...

Atom-1	Atom-2	Interatomic distance (Å)	Clash overlap (Å)
1:B:41:ARG:HD2	2:B:401:NAD:C5A	2.46	0.45
1:B:140:ALA:HB2	1:B:180[A]:CYS:SG	2.57	0.45
1:D:94:ARG:NH2	3:D:511:HOH:O	2.48	0.45
1:C:15:THR:O	1:C:88:CYS:HB2	2.16	0.45
1:D:179:ASN:OD1	1:D:238:VAL:HG22	2.17	0.45
1:C:19[A]:SER:OG	2:C:401:NAD:O5B	2.34	0.44
1:D:186:THR:HA	1:D:215:VAL:O	2.17	0.44
1:A:186:THR:HA	1:A:215:VAL:O	2.17	0.44
1:D:23:ARG:NH1	3:D:543[B]:HOH:O	2.49	0.44
1:D:132:ARG:HA	1:D:174:LYS:O	2.18	0.43
1:A:140:ALA:HB2	1:A:180[A]:CYS:SG	2.59	0.43
1:B:140:ALA:HA	1:B:157:LYS:HD2	1.99	0.43
1:B:112:ILE:HD12	2:B:401:NAD:H61A	1.84	0.43
1:C:39:ALA:HA	1:C:58:LEU:O	2.20	0.42
1:A:150[B]:LEU:HB3	1:A:153:TYR:HB3	2.01	0.41
1:B:102:ALA:HB3	1:B:105:GLU:HG3	2.03	0.41
1:C:140:ALA:HB2	1:C:180[B]:CYS:SG	2.61	0.40
1:C:186:THR:HA	1:C:215:VAL:O	2.22	0.40

All (1) symmetry-related close contacts are listed below. The label for Atom-2 includes the symmetry operator and encoded unit-cell translations to be applied.

Atom-1	Atom-2	Interatomic distance (Å)	Clash overlap (Å)
3:A:504:HOH:O	3:C:544:HOH:O[4_446]	2.18	0.02

## 5.3 Torsion angles

### 5.3.1 Protein backbone

In the following table, the Percentiles column shows the percent Ramachandran outliers of the chain as a percentile score with respect to all X-ray entries followed by that with respect to entries of similar resolution.

The Analysed column shows the number of residues for which the backbone conformation was analysed, and the total number of residues.

Mol	Chain	Analysed	Favoured	Allowed	Outliers	Percentiles	
1	A	260/274 (95%)	249 (96%)	11 (4%)	0	100	100
1	B	260/274 (95%)	253 (97%)	7 (3%)	0	100	100

Continued on next page...

*Continued from previous page...*

Mol	Chain	Analysed	Favoured	Allowed	Outliers	Percentiles	
1	C	262/274 (96%)	255 (97%)	7 (3%)	0	100	100
1	D	261/274 (95%)	252 (97%)	9 (3%)	0	100	100
All	All	1043/1096 (95%)	1009 (97%)	34 (3%)	0	100	100

There are no Ramachandran outliers to report.

### 5.3.2 Protein sidechains ⓘ

In the following table, the Percentiles column shows the percent sidechain outliers of the chain as a percentile score with respect to all X-ray entries followed by that with respect to entries of similar resolution.

The Analysed column shows the number of residues for which the sidechain conformation was analysed, and the total number of residues.

Mol	Chain	Analysed	Rotameric	Outliers	Percentiles	
1	A	181/195 (93%)	179 (99%)	2 (1%)	73	48
1	B	179/195 (92%)	177 (99%)	2 (1%)	73	48
1	C	181/195 (93%)	179 (99%)	2 (1%)	73	48
1	D	179/195 (92%)	177 (99%)	2 (1%)	73	48
All	All	720/780 (92%)	712 (99%)	8 (1%)	73	48

All (8) residues with a non-rotameric sidechain are listed below:

Mol	Chain	Res	Type
1	A	65	ASP
1	A	133	ARG
1	B	65	ASP
1	B	133	ARG
1	C	65	ASP
1	C	133	ARG
1	D	65	ASP
1	D	133	ARG

Some sidechains can be flipped to improve hydrogen bonding and reduce clashes. There are no such sidechains identified.

### 5.3.3 RNA ⓘ

There are no RNA molecules in this entry.

## 5.4 Non-standard residues in protein, DNA, RNA chains ⓘ

There are no non-standard protein/DNA/RNA residues in this entry.

## 5.5 Carbohydrates ⓘ

There are no carbohydrates in this entry.

## 5.6 Ligand geometry ⓘ

4 ligands are modelled in this entry.

In the following table, the Counts columns list the number of bonds (or angles) for which Mogul statistics could be retrieved, the number of bonds (or angles) that are observed in the model and the number of bonds (or angles) that are defined in the Chemical Component Dictionary. The Link column lists molecule types, if any, to which the group is linked. The Z score for a bond length (or angle) is the number of standard deviations the observed value is removed from the expected value. A bond length (or angle) with  $|Z| > 2$  is considered an outlier worth inspection. RMSZ is the root-mean-square of all Z scores of the bond lengths (or angles).

Mol	Type	Chain	Res	Link	Bond lengths			Bond angles		
					Counts	RMSZ	# $ Z  > 2$	Counts	RMSZ	# $ Z  > 2$
2	NAD	A	401	-	42,48,48	4.88	16 (38%)	50,73,73	2.09	6 (12%)
2	NAD	C	401	-	42,48,48	4.91	16 (38%)	50,73,73	2.15	7 (14%)
2	NAD	B	401	-	42,48,48	4.90	16 (38%)	50,73,73	2.18	8 (16%)
2	NAD	D	401	-	42,48,48	4.87	17 (40%)	50,73,73	1.95	8 (16%)

In the following table, the Chirals column lists the number of chiral outliers, the number of chiral centers analysed, the number of these observed in the model and the number defined in the Chemical Component Dictionary. Similar counts are reported in the Torsion and Rings columns. '-' means no outliers of that kind were identified.

Mol	Type	Chain	Res	Link	Chirals	Torsions	Rings
2	NAD	A	401	-	-	3/26/62/62	0/5/5/5
2	NAD	C	401	-	-	5/26/62/62	0/5/5/5
2	NAD	B	401	-	-	7/26/62/62	0/5/5/5
2	NAD	D	401	-	-	5/26/62/62	0/5/5/5

All (65) bond length outliers are listed below:

Mol	Chain	Res	Type	Atoms	Z	Observed(Å)	Ideal(Å)
2	D	401	NAD	C2D-C1D	-14.83	1.31	1.53
2	C	401	NAD	O4D-C1D	14.77	1.61	1.41
2	C	401	NAD	C2D-C1D	-14.68	1.31	1.53
2	A	401	NAD	O4D-C1D	14.68	1.61	1.41
2	B	401	NAD	C2D-C1D	-14.67	1.31	1.53
2	D	401	NAD	O4D-C1D	14.67	1.61	1.41
2	A	401	NAD	C2D-C1D	-14.65	1.31	1.53
2	B	401	NAD	O4B-C1B	14.27	1.61	1.41
2	B	401	NAD	O4D-C1D	14.11	1.60	1.41
2	B	401	NAD	C2B-C1B	-14.07	1.32	1.53
2	C	401	NAD	C2B-C1B	-13.94	1.32	1.53
2	A	401	NAD	O4B-C1B	13.79	1.60	1.41
2	A	401	NAD	C2B-C1B	-13.76	1.32	1.53
2	C	401	NAD	O4B-C1B	13.74	1.60	1.41
2	D	401	NAD	C2B-C1B	-13.67	1.33	1.53
2	D	401	NAD	O4B-C1B	13.38	1.59	1.41
2	C	401	NAD	O4B-C4B	-7.17	1.29	1.45
2	B	401	NAD	O4B-C4B	-7.00	1.29	1.45
2	A	401	NAD	O4B-C4B	-6.85	1.29	1.45
2	D	401	NAD	O4B-C4B	-6.80	1.29	1.45
2	A	401	NAD	O4D-C4D	-5.24	1.33	1.45
2	B	401	NAD	O4D-C4D	-5.21	1.33	1.45
2	D	401	NAD	O4D-C4D	-5.19	1.33	1.45
2	C	401	NAD	O4D-C4D	-5.19	1.33	1.45
2	C	401	NAD	C7N-N7N	4.48	1.41	1.33
2	D	401	NAD	C7N-N7N	4.48	1.41	1.33
2	B	401	NAD	C7N-N7N	4.41	1.41	1.33
2	A	401	NAD	C7N-N7N	4.34	1.41	1.33
2	B	401	NAD	O2B-C2B	3.84	1.52	1.43
2	C	401	NAD	O2B-C2B	3.75	1.51	1.43
2	A	401	NAD	O2B-C2B	3.74	1.51	1.43
2	D	401	NAD	O2B-C2B	3.52	1.51	1.43
2	B	401	NAD	O3D-C3D	-3.48	1.34	1.43
2	B	401	NAD	C6A-N6A	3.46	1.46	1.34
2	C	401	NAD	C6A-N6A	3.45	1.46	1.34
2	C	401	NAD	O3D-C3D	-3.44	1.34	1.43
2	D	401	NAD	O3D-C3D	-3.37	1.35	1.43
2	D	401	NAD	C6A-N6A	3.36	1.46	1.34
2	A	401	NAD	C6A-N6A	3.32	1.46	1.34
2	D	401	NAD	C2A-N1A	3.03	1.39	1.33
2	A	401	NAD	O3D-C3D	-2.94	1.36	1.43
2	B	401	NAD	C5A-C4A	-2.76	1.33	1.40

*Continued on next page...*

*Continued from previous page...*

Mol	Chain	Res	Type	Atoms	Z	Observed(Å)	Ideal(Å)
2	A	401	NAD	C5A-C4A	-2.74	1.33	1.40
2	D	401	NAD	C5A-C4A	-2.67	1.33	1.40
2	C	401	NAD	C5A-C4A	-2.63	1.34	1.40
2	D	401	NAD	C2A-N3A	2.62	1.36	1.32
2	C	401	NAD	C2A-N3A	2.61	1.36	1.32
2	C	401	NAD	C2A-N1A	2.51	1.38	1.33
2	A	401	NAD	O2D-C2D	2.45	1.48	1.43
2	D	401	NAD	O2D-C2D	2.41	1.48	1.43
2	A	401	NAD	C2A-N1A	2.40	1.38	1.33
2	B	401	NAD	C5B-C4B	2.37	1.59	1.51
2	C	401	NAD	C5B-C4B	2.37	1.59	1.51
2	A	401	NAD	C5B-C4B	2.36	1.59	1.51
2	A	401	NAD	C2A-N3A	2.34	1.35	1.32
2	C	401	NAD	O2D-C2D	2.28	1.48	1.43
2	B	401	NAD	O2D-C2D	2.25	1.48	1.43
2	B	401	NAD	PA-O5B	2.25	1.68	1.59
2	A	401	NAD	PA-O5B	2.25	1.68	1.59
2	B	401	NAD	C2A-N3A	2.24	1.35	1.32
2	D	401	NAD	PA-O5B	2.23	1.68	1.59
2	D	401	NAD	C5B-C4B	2.23	1.58	1.51
2	B	401	NAD	C2A-N1A	2.23	1.38	1.33
2	C	401	NAD	PA-O5B	2.14	1.68	1.59
2	D	401	NAD	C8A-N7A	-2.01	1.31	1.34

All (29) bond angle outliers are listed below:

Mol	Chain	Res	Type	Atoms	Z	Observed(°)	Ideal(°)
2	B	401	NAD	C5A-C6A-N6A	10.82	136.79	120.35
2	C	401	NAD	C5A-C6A-N6A	10.56	136.40	120.35
2	A	401	NAD	C5A-C6A-N6A	10.05	135.63	120.35
2	D	401	NAD	C5A-C6A-N6A	9.34	134.55	120.35
2	B	401	NAD	N6A-C6A-N1A	-7.10	103.83	118.57
2	C	401	NAD	N6A-C6A-N1A	-6.88	104.30	118.57
2	A	401	NAD	N6A-C6A-N1A	-6.42	105.25	118.57
2	D	401	NAD	N6A-C6A-N1A	-5.65	106.84	118.57
2	A	401	NAD	N3A-C2A-N1A	-4.50	121.64	128.68
2	B	401	NAD	N3A-C2A-N1A	-3.98	122.45	128.68
2	C	401	NAD	N3A-C2A-N1A	-3.62	123.01	128.68
2	D	401	NAD	N3A-C2A-N1A	-3.58	123.09	128.68
2	A	401	NAD	C3N-C7N-N7N	2.79	121.10	117.75
2	D	401	NAD	C3N-C7N-N7N	2.74	121.04	117.75
2	B	401	NAD	O4D-C1D-C2D	-2.55	103.20	106.93

*Continued on next page...*

*Continued from previous page...*

Mol	Chain	Res	Type	Atoms	Z	Observed(°)	Ideal(°)
2	C	401	NAD	C1B-N9A-C4A	-2.41	122.41	126.64
2	D	401	NAD	O4B-C1B-C2B	-2.40	103.42	106.93
2	B	401	NAD	C1B-N9A-C4A	-2.39	122.44	126.64
2	C	401	NAD	PN-O3-PA	-2.35	124.76	132.83
2	C	401	NAD	O4D-C1D-C2D	-2.18	103.74	106.93
2	C	401	NAD	C6N-N1N-C2N	-2.16	120.00	121.97
2	B	401	NAD	C3N-C7N-N7N	2.15	120.33	117.75
2	D	401	NAD	O7N-C7N-N7N	-2.15	119.52	122.58
2	D	401	NAD	C3B-C2B-C1B	2.13	104.18	100.98
2	D	401	NAD	C1B-N9A-C4A	-2.13	122.91	126.64
2	A	401	NAD	O4D-C1D-C2D	-2.12	103.83	106.93
2	B	401	NAD	C6N-N1N-C2N	-2.11	120.05	121.97
2	A	401	NAD	C6N-N1N-C2N	-2.10	120.06	121.97
2	B	401	NAD	PN-O3-PA	-2.00	125.95	132.83

There are no chirality outliers.

All (20) torsion outliers are listed below:

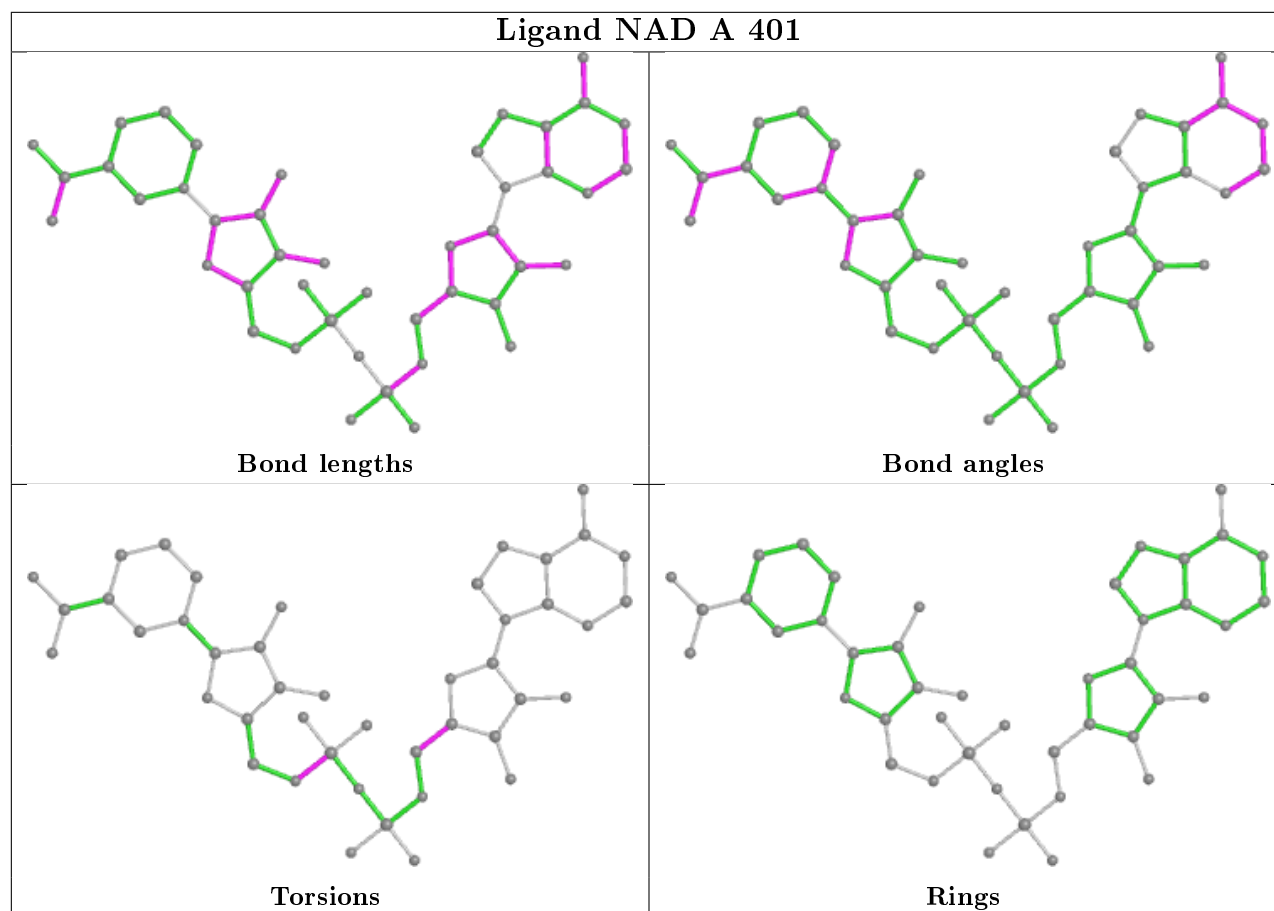
Mol	Chain	Res	Type	Atoms
2	C	401	NAD	O4D-C1D-N1N-C2N
2	B	401	NAD	C5D-O5D-PN-O2N
2	B	401	NAD	O4D-C1D-N1N-C2N
2	D	401	NAD	O4D-C1D-N1N-C2N
2	A	401	NAD	C5D-O5D-PN-O3
2	B	401	NAD	C5D-O5D-PN-O3
2	A	401	NAD	C5D-O5D-PN-O2N
2	B	401	NAD	C5D-O5D-PN-O1N
2	D	401	NAD	O4B-C4B-C5B-O5B
2	B	401	NAD	PA-O3-PN-O2N
2	C	401	NAD	C5D-O5D-PN-O3
2	D	401	NAD	C5D-O5D-PN-O3
2	A	401	NAD	O4B-C4B-C5B-O5B
2	C	401	NAD	O4B-C4B-C5B-O5B
2	D	401	NAD	PA-O3-PN-O2N
2	C	401	NAD	C5B-O5B-PA-O1A
2	C	401	NAD	C5D-O5D-PN-O1N
2	B	401	NAD	C5B-O5B-PA-O1A
2	D	401	NAD	C5D-O5D-PN-O1N
2	B	401	NAD	O4B-C4B-C5B-O5B

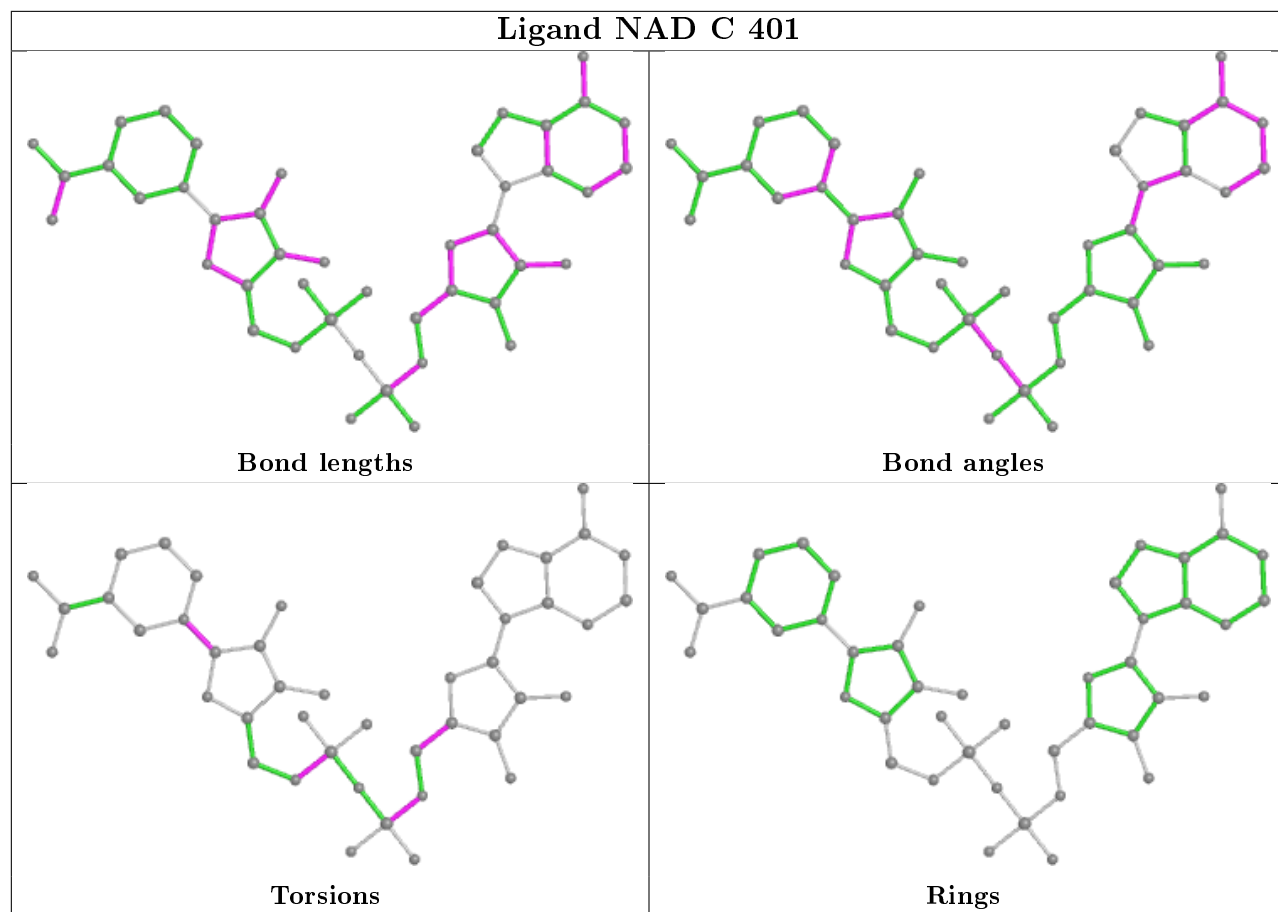
There are no ring outliers.

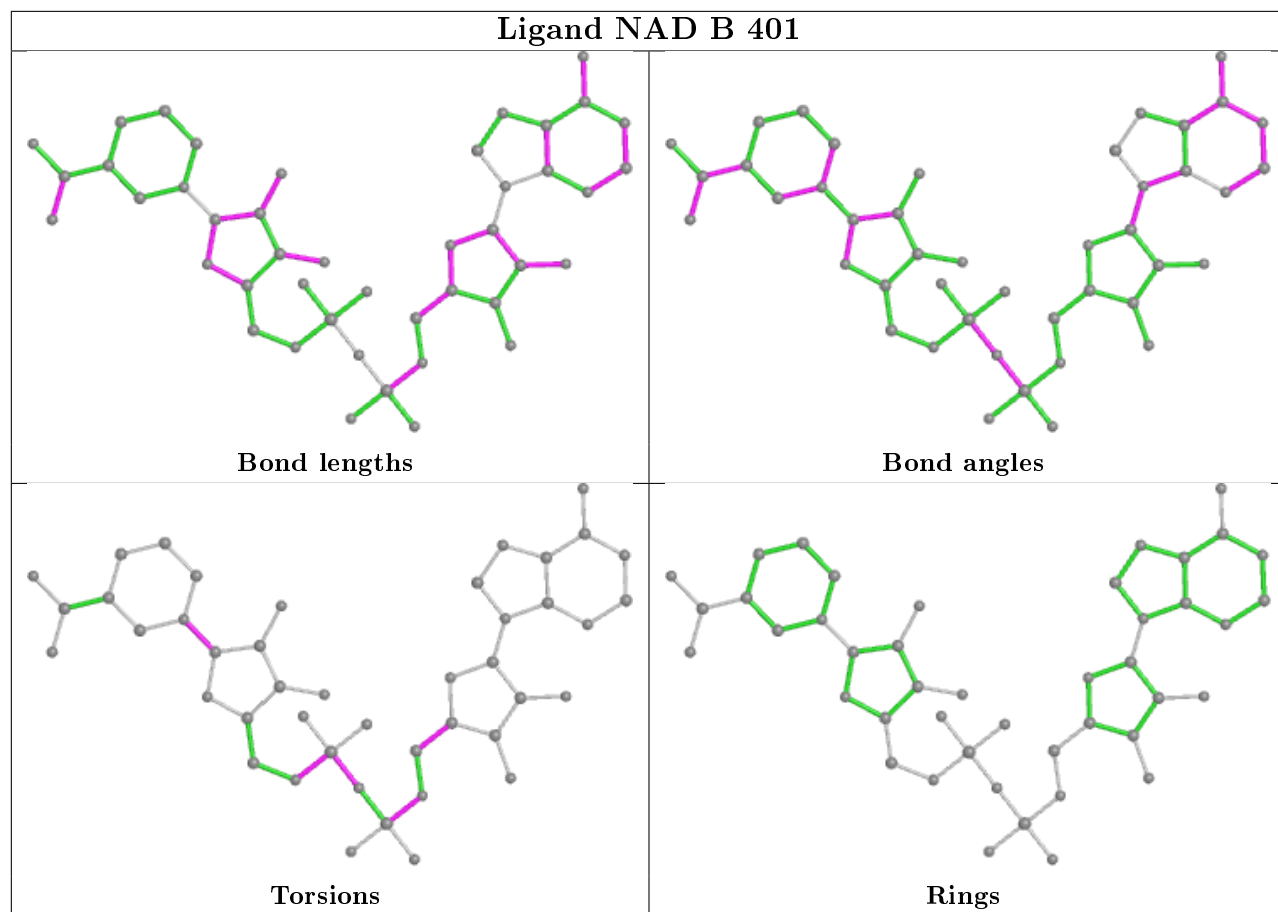
3 monomers are involved in 6 short contacts:

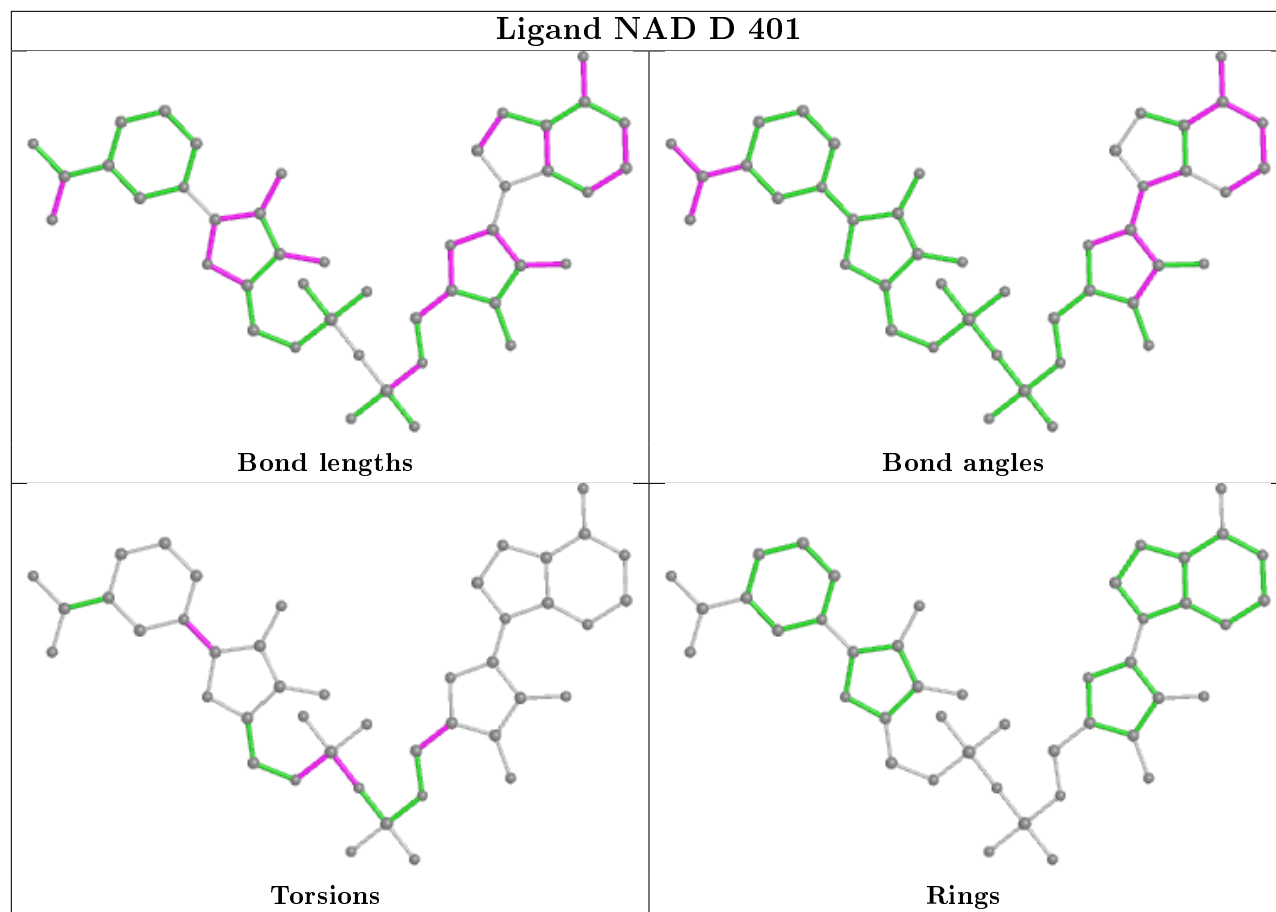
Mol	Chain	Res	Type	Clashes	Symm-Clashes
2	A	401	NAD	1	0
2	C	401	NAD	2	0
2	B	401	NAD	3	0

The following is a two-dimensional graphical depiction of Mogul quality analysis of bond lengths, bond angles, torsion angles, and ring geometry for all instances of the Ligand of Interest. In addition, ligands with molecular weight > 250 and outliers as shown on the validation Tables will also be included. For torsion angles, if less than 5% of the Mogul distribution of torsion angles is within 10 degrees of the torsion angle in question, then that torsion angle is considered an outlier. Any bond that is central to one or more torsion angles identified as an outlier by Mogul will be highlighted in the graph. For rings, the root-mean-square deviation (RMSD) between the ring in question and similar rings identified by Mogul is calculated over all ring torsion angles. If the average RMSD is greater than 60 degrees and the minimal RMSD between the ring in question and any Mogul-identified rings is also greater than 60 degrees, then that ring is considered an outlier. The outliers are highlighted in purple. The color gray indicates Mogul did not find sufficient equivalents in the CSD to analyse the geometry.









## 5.7 Other polymers [i](#)

There are no such residues in this entry.

## 5.8 Polymer linkage issues [i](#)

There are no chain breaks in this entry.

## 6 Fit of model and data ⓘ

### 6.1 Protein, DNA and RNA chains ⓘ

In the following table, the column labelled ‘#RSRZ> 2’ contains the number (and percentage) of RSRZ outliers, followed by percent RSRZ outliers for the chain as percentile scores relative to all X-ray entries and entries of similar resolution. The OWAB column contains the minimum, median, 95<sup>th</sup> percentile and maximum values of the occupancy-weighted average B-factor per residue. The column labelled ‘Q< 0.9’ lists the number of (and percentage) of residues with an average occupancy less than 0.9.

Mol	Chain	Analysed	<RSRZ>	#RSRZ>2	OWAB(Å <sup>2</sup> )	Q<0.9
1	A	257/274 (93%)	0.74	21 (8%) 11 13	8, 14, 32, 54	0
1	B	258/274 (94%)	0.70	18 (6%) 16 18	8, 15, 33, 50	0
1	C	258/274 (94%)	0.82	21 (8%) 12 14	8, 15, 32, 50	0
1	D	259/274 (94%)	0.81	19 (7%) 15 17	7, 14, 33, 55	0
All	All	1032/1096 (94%)	0.77	79 (7%) 13 16	7, 14, 33, 55	0

All (79) RSRZ outliers are listed below:

Mol	Chain	Res	Type	RSRZ
1	D	196	THR	6.8
1	D	197	THR	5.8
1	B	3	ALA	5.7
1	A	196	THR	5.7
1	C	54	GLY	5.7
1	A	3	ALA	5.6
1	D	189	PRO	5.5
1	C	195	PHE	5.3
1	D	3	ALA	5.1
1	C	3	ALA	5.1
1	C	52	ALA	5.1
1	C	196	THR	5.0
1	B	52	ALA	4.9
1	C	190	ALA	4.8
1	B	197	THR	4.7
1	A	189	PRO	4.7
1	B	196	THR	4.6
1	A	200	LEU	4.4
1	B	195	PHE	4.3
1	C	199	THR	4.2
1	B	198	HIS	4.2

*Continued on next page...*

*Continued from previous page...*

Mol	Chain	Res	Type	RSRZ
1	C	55	GLY	4.1
1	D	195	PHE	4.1
1	B	199	THR	4.1
1	D	193	ARG	4.0
1	C	193	ARG	4.0
1	D	194	GLY	4.0
1	C	198	HIS	3.8
1	D	198	HIS	3.8
1	C	197	THR	3.8
1	A	4	SER	3.8
1	D	200	LEU	3.8
1	C	99	GLY	3.7
1	C	200	LEU	3.5
1	B	53	THR	3.5
1	A	199	THR	3.4
1	B	55	GLY	3.4
1	A	193	ARG	3.3
1	D	5	ALA	3.3
1	A	188	THR	3.2
1	D	188	THR	3.2
1	D	4	SER	3.2
1	A	261	GLU	3.1
1	C	203	ASP	3.1
1	A	195	PHE	3.1
1	B	99	GLY	3.1
1	A	5	ALA	3.0
1	C	189	PRO	3.0
1	D	199	THR	2.9
1	D	190	ALA	2.9
1	B	54	GLY	2.8
1	A	240	LEU	2.7
1	A	99	GLY	2.7
1	A	185	PHE	2.7
1	A	194	GLY	2.6
1	B	200	LEU	2.6
1	C	53	THR	2.6
1	D	261	GLU	2.5
1	B	193	ARG	2.4
1	A	43[A]	ILE	2.4
1	D	9	GLY	2.4
1	C	92	LEU	2.4
1	A	217	ALA	2.3

*Continued on next page...*

*Continued from previous page...*

Mol	Chain	Res	Type	RSRZ
1	B	203	ASP	2.3
1	A	190	ALA	2.3
1	A	161	ILE	2.3
1	B	190	ALA	2.2
1	D	260	ARG	2.2
1	A	203	ASP	2.2
1	D	187	GLN	2.1
1	C	238	VAL	2.1
1	D	108	VAL	2.1
1	C	95	THR	2.1
1	C	191	LEU	2.1
1	A	192	GLU	2.1
1	B	238	VAL	2.1
1	C	194	GLY	2.1
1	B	189	PRO	2.0
1	B	8	ASN	2.0

## 6.2 Non-standard residues in protein, DNA, RNA chains [i](#)

There are no non-standard protein/DNA/RNA residues in this entry.

## 6.3 Carbohydrates [i](#)

There are no carbohydrates in this entry.

## 6.4 Ligands [i](#)

In the following table, the Atoms column lists the number of modelled atoms in the group and the number defined in the chemical component dictionary. The B-factors column lists the minimum, median, 95<sup>th</sup> percentile and maximum values of B factors of atoms in the group. The column labelled 'Q< 0.9' lists the number of atoms with occupancy less than 0.9.

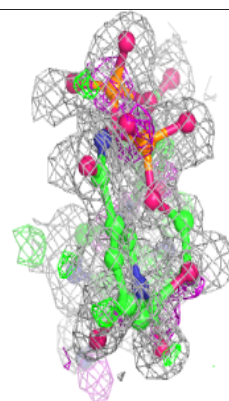
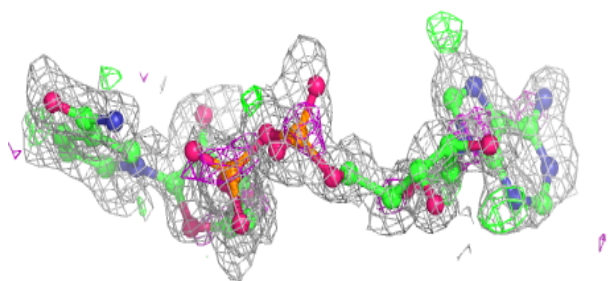
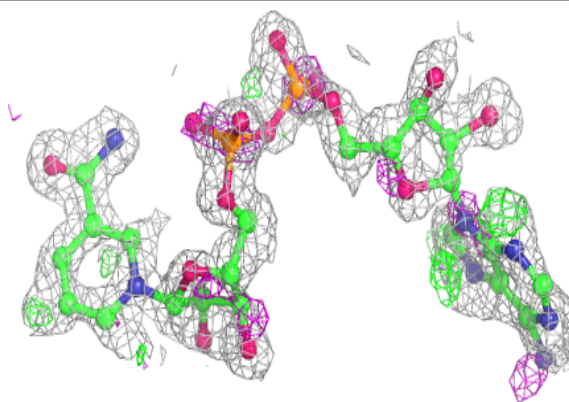
Mol	Type	Chain	Res	Atoms	RSCC	RSR	B-factors( $\text{\AA}^2$ )	Q<0.9
2	NAD	C	401	44/44	0.70	0.24	12,22,28,35	44
2	NAD	B	401	44/44	0.73	0.21	15,22,27,34	44
2	NAD	D	401	44/44	0.78	0.20	9,17,24,26	44
2	NAD	A	401	44/44	0.84	0.16	11,19,26,28	44

The following is a graphical depiction of the model fit to experimental electron density of all instances of the Ligand of Interest. In addition, ligands with molecular weight > 250 and outliers

as shown on the geometry validation Tables will also be included. Each fit is shown from different orientation to approximate a three-dimensional view.

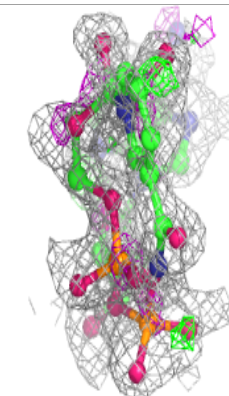
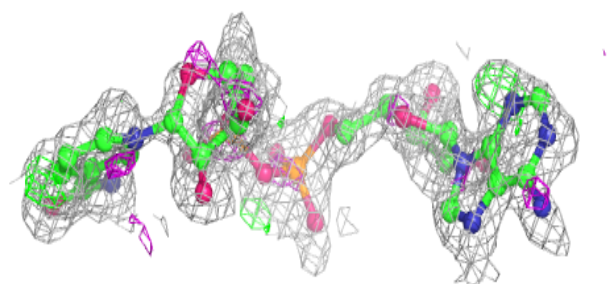
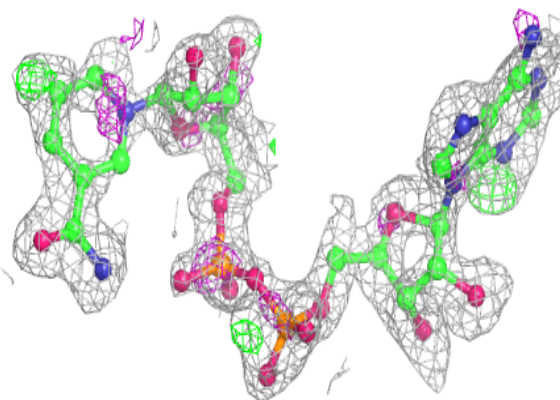
**Electron density around NAD C 401:**

$2mF_o-DF_c$  (at 0.7 rmsd) in gray  
 $mF_o-DF_c$  (at 3 rmsd) in purple (negative)  
and green (positive)



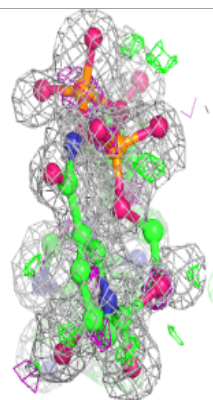
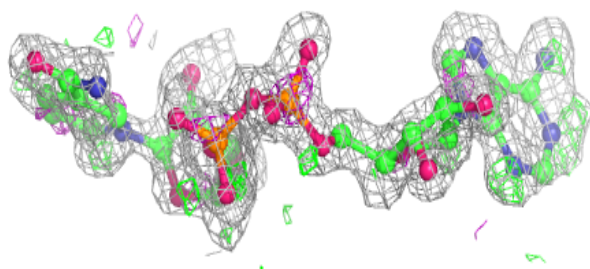
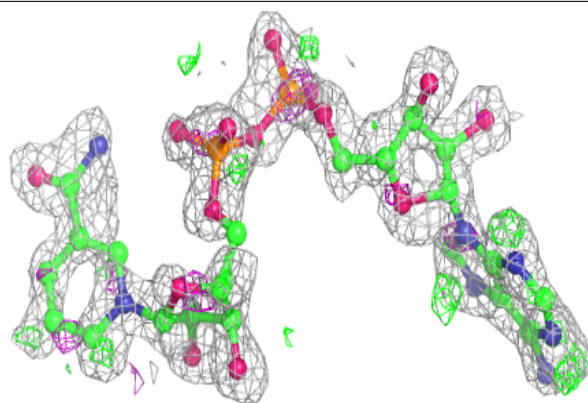
**Electron density around NAD B 401:**

$2mF_o-DF_c$  (at 0.7 rmsd) in gray  
 $mF_o-DF_c$  (at 3 rmsd) in purple (negative)  
and green (positive)

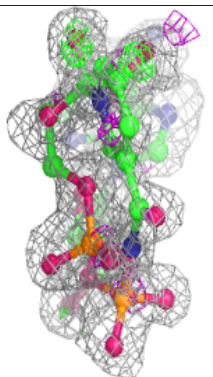
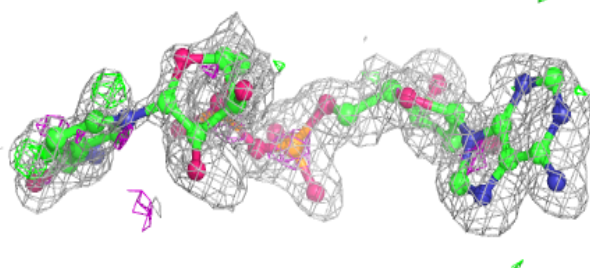
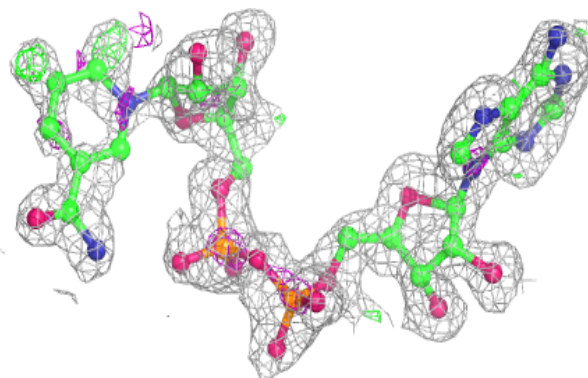


**Electron density around NAD D 401:**

$2mF_o-DF_c$  (at 0.7 rmsd) in gray  
 $mF_o-DF_c$  (at 3 rmsd) in purple (negative)  
and green (positive)

**Electron density around NAD A 401:**

$2mF_o-DF_c$  (at 0.7 rmsd) in gray  
 $mF_o-DF_c$  (at 3 rmsd) in purple (negative)  
and green (positive)



## 6.5 Other polymers [i](#)

There are no such residues in this entry.