



Full wwPDB X-ray Structure Validation Report ⓘ

Aug 29, 2020 – 10:04 PM BST

PDB ID : 6JLV
Title : Near-Atomic Resolution Structure of the CYP102A1 Haem Domain with N-A
bietoyl-L-Tryptophan
Authors : Stanfield, J.K.; Kasai, C.; Sugimoto, H.; Shiro, Y.; Watanabe, Y.; Shoji, O.
Deposited on : 2019-03-07
Resolution : 1.22 Å(reported)

This is a Full wwPDB X-ray Structure Validation Report for a publicly released PDB entry.

We welcome your comments at validation@mail.wwpdb.org

A user guide is available at

<https://www.wwpdb.org/validation/2017/XrayValidationReportHelp>

with specific help available everywhere you see the ⓘ symbol.

The following versions of software and data (see [references ⓘ](#)) were used in the production of this report:

MolProbity : 4.02b-467
Mogul : 1.8.5 (274361), CSD as541be (2020)
Xtriage (Phenix) : 1.13
EDS : 2.13
buster-report : 1.1.7 (2018)
Percentile statistics : 20191225.v01 (using entries in the PDB archive December 25th 2019)
Refmac : 5.8.0158
CCP4 : 7.0.044 (Gargrove)
Ideal geometry (proteins) : Engh & Huber (2001)
Ideal geometry (DNA, RNA) : Parkinson et al. (1996)
Validation Pipeline (wwPDB-VP) : 2.13

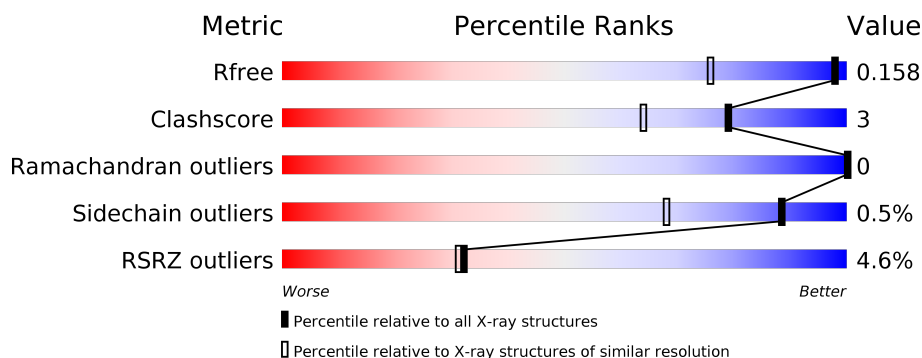
1 Overall quality at a glance

The following experimental techniques were used to determine the structure:

X-RAY DIFFRACTION

The reported resolution of this entry is 1.22 Å.

Percentile scores (ranging between 0-100) for global validation metrics of the entry are shown in the following graphic. The table shows the number of entries on which the scores are based.



Metric	Whole archive (#Entries)	Similar resolution (#Entries, resolution range(Å))
R_{free}	130704	1232 (1.24-1.20)
Clashscore	141614	1294 (1.24-1.20)
Ramachandran outliers	138981	1251 (1.24-1.20)
Sidechain outliers	138945	1250 (1.24-1.20)
RSRZ outliers	127900	1209 (1.24-1.20)

The table below summarises the geometric issues observed across the polymeric chains and their fit to the electron density. The red, orange, yellow and green segments on the lower bar indicate the fraction of residues that contain outliers for ≥ 3 , 2, 1 and 0 types of geometric quality criteria respectively. A grey segment represents the fraction of residues that are not modelled. The numeric value for each fraction is indicated below the corresponding segment, with a dot representing fractions $\leq 5\%$. The upper red bar (where present) indicates the fraction of residues that have poor fit to the electron density. The numeric value is given above the bar.

Mol	Chain	Length	Quality of chain
1	A	456	<div> <div>4%</div> <div> <div></div> <div>96%</div> <div>.</div> </div> </div>
1	B	456	<div> <div>5%</div> <div> <div></div> <div>96%</div> <div>.</div> </div> </div>

2 Entry composition [i](#)

There are 7 unique types of molecules in this entry. The entry contains 9173 atoms, of which 0 are hydrogens and 0 are deuteriums.

In the tables below, the ZeroOcc column contains the number of atoms modelled with zero occupancy, the AltConf column contains the number of residues with at least one atom in alternate conformation and the Trace column contains the number of residues modelled with at most 2 atoms.

- Molecule 1 is a protein called Bifunctional cytochrome P450/NADPH-P450 reductase.

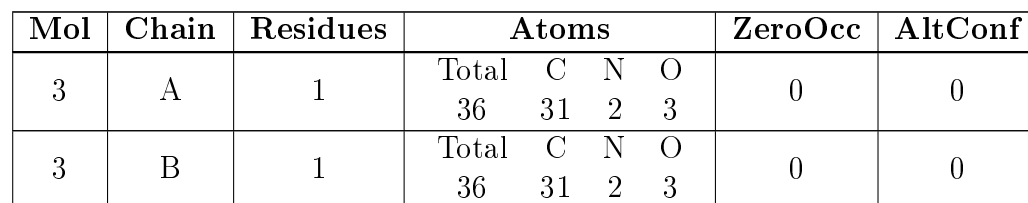
Mol	Chain	Residues	Atoms					ZeroOcc	AltConf	Trace
1	A	455	Total	C	N	O	S	0	30	0
			3920	2496	662	740	22			
1	B	455	Total	C	N	O	S	0	27	0
			3897	2480	663	735	19			

- Molecule 2 is PROTOPORPHYRIN IX CONTAINING FE (three-letter code: HEM) (formula: $C_{34}H_{32}FeN_4O_4$).



Mol	Chain	Residues	Atoms					ZeroOcc	AltConf
2	A	1	Total	C	Fe	N	O	0	1
			86	68	2	8	8		
2	B	1	Total	C	Fe	N	O	0	1
			86	68	2	8	8		

- Molecule 3 is (2S)-2-[(1R,4aR,4bR,10aR)-1,4a-dimethyl-7-propan-2-yl-2,3,4,4b,5,6,10,10a-octahydrophenanthren-1-yl]carbonylamino]-3-(1H-indol-3-yl)propanoic acid (three-letter code: WAA) (formula: $C_{31}H_{40}N_2O_3$).



- GOL
-
- The diagram shows the skeletal structure of 1,2,3-propanetriol (glycerol). The carbon chain is represented by a zigzag line with three vertices labeled C1, C2, and C3 in green. C1 is at the left, C2 is in the middle, and C3 is at the right. Each carbon is bonded to a hydroxyl group (OH) in red. The OH group on C1 is labeled O1 in green below it. The OH group on C2 is labeled O2 in green below it. The OH group on C3 is labeled O3 in green to its right. The bonds between the carbons and between the carbons and the hydroxyl groups are black lines.

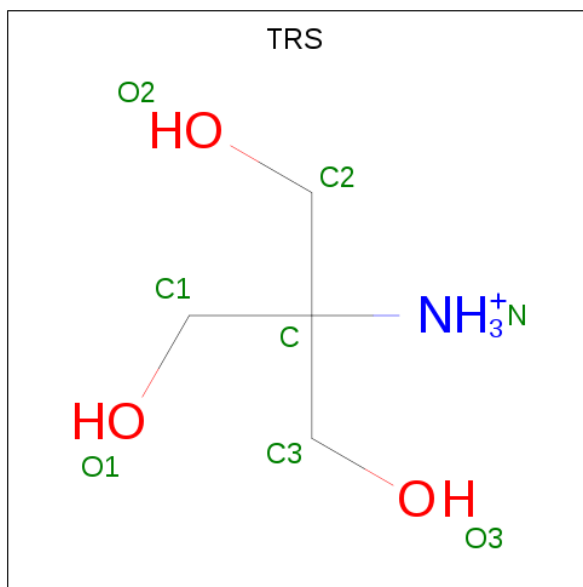
Mol	Chain	Residues	Atoms	ZeroOcc	AltConf
4	A	1	Total C O 6 3 3	0	0
4	A	1	Total C O 6 3 3	0	0



Continued from previous page...

Mol	Chain	Residues	Atoms			ZeroOcc	AltConf
4	A	1	Total	C	O	0	0
			6	3	3		
4	A	1	Total	C	O	0	0
			6	3	3		
4	A	1	Total	C	O	0	0
			6	3	3		
4	A	1	Total	C	O	0	0
			6	3	3		
4	A	1	Total	C	O	0	0
			6	3	3		
4	A	1	Total	C	O	0	1
			12	6	6		
4	A	1	Total	C	O	0	0
			6	3	3		
4	A	1	Total	C	O	0	0
			6	3	3		
4	B	1	Total	C	O	0	0
			6	3	3		
4	B	1	Total	C	O	0	0
			6	3	3		
4	B	1	Total	C	O	0	1
			12	6	6		
4	B	1	Total	C	O	0	0
			6	3	3		
4	B	1	Total	C	O	0	0
			6	3	3		
4	B	1	Total	C	O	0	0
			6	3	3		
4	B	1	Total	C	O	0	1
			12	6	6		
4	B	1	Total	C	O	0	1
			12	6	6		

- Molecule 5 is 2-AMINO-2-HYDROXYMETHYL-PROPANE-1,3-DIOL (three-letter code: TRS) (formula: C₄H₁₂NO₃).



Mol	Chain	Residues	Atoms				ZeroOcc	AltConf
5	A	1	Total	C	N	O	0	0
			8	4	1	3		
5	B	1	Total	C	N	O	0	0
			8	4	1	3		

- Molecule 6 is MAGNESIUM ION (three-letter code: MG) (formula: Mg).

Mol	Chain	Residues	Atoms		ZeroOcc	AltConf
6	A	1	Total	Mg	0	0
			1	1		

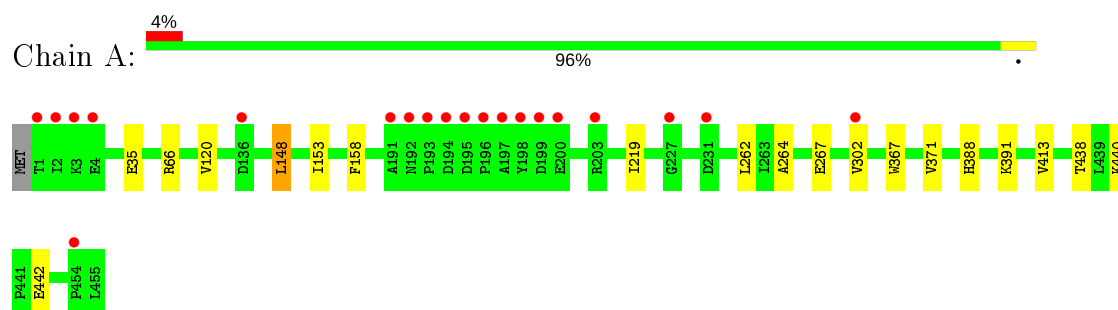
- Molecule 7 is water.

Mol	Chain	Residues	Atoms		ZeroOcc	AltConf
7	A	502	Total	O	0	0
			502	502		
7	B	449	Total	O	0	0
			449	449		

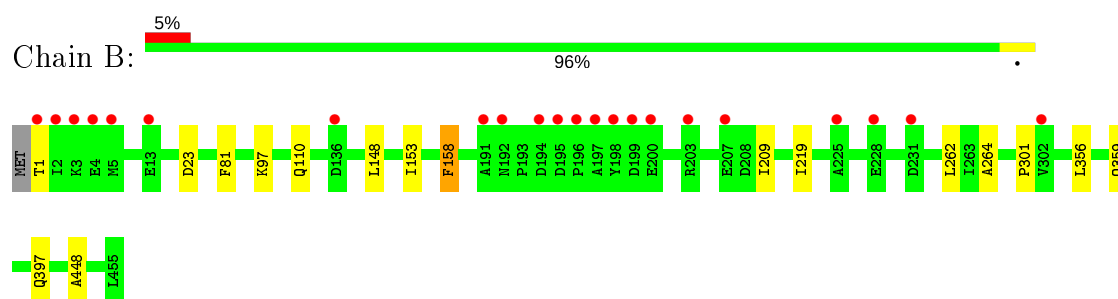
3 Residue-property plots [i](#)

These plots are drawn for all protein, RNA, DNA and oligosaccharide chains in the entry. The first graphic for a chain summarises the proportions of the various outlier classes displayed in the second graphic. The second graphic shows the sequence view annotated by issues in geometry and electron density. Residues are color-coded according to the number of geometric quality criteria for which they contain at least one outlier: green = 0, yellow = 1, orange = 2 and red = 3 or more. A red dot above a residue indicates a poor fit to the electron density ($RSRZ > 2$). Stretches of 2 or more consecutive residues without any outlier are shown as a green connector. Residues present in the sample, but not in the model, are shown in grey.

- Molecule 1: Bifunctional cytochrome P450/NADPH-P450 reductase



- Molecule 1: Bifunctional cytochrome P450/NADPH-P450 reductase



4 Data and refinement statistics

Property	Value	Source
Space group	P 1 21 1	Depositor
Cell constants a, b, c, α , β , γ	58.96 Å 148.73 Å 63.91 Å 90.00° 98.38° 90.00°	Depositor
Resolution (Å)	48.22 – 1.22 48.17 – 1.22	Depositor EDS
% Data completeness (in resolution range)	99.9 (48.22-1.22) 99.9 (48.17-1.22)	Depositor EDS
R_{merge}	0.06	Depositor
R_{sym}	(Not available)	Depositor
$\langle I/\sigma(I) \rangle$ ¹	1.47 (at 1.22 Å)	Xtriage
Refinement program	REFMAC 5.8.0238	Depositor
R, R_{free}	0.134 , 0.156 0.136 , 0.158	Depositor DCC
R_{free} test set	15969 reflections (4.97%)	wwPDB-VP
Wilson B-factor (Å ²)	15.8	Xtriage
Anisotropy	0.117	Xtriage
Bulk solvent k_{sol} (e/Å ³), B_{sol} (Å ²)	0.36 , 44.4	EDS
L-test for twinning ²	$\langle L \rangle = 0.50$, $\langle L^2 \rangle = 0.33$	Xtriage
Estimated twinning fraction	No twinning to report.	Xtriage
F_o, F_c correlation	0.98	EDS
Total number of atoms	9173	wwPDB-VP
Average B, all atoms (Å ²)	21.0	wwPDB-VP

Xtriage's analysis on translational NCS is as follows: *The largest off-origin peak in the Patterson function is 4.94% of the height of the origin peak. No significant pseudotranslation is detected.*

¹Intensities estimated from amplitudes.

²Theoretical values of $\langle |L| \rangle$, $\langle L^2 \rangle$ for acentric reflections are 0.5, 0.333 respectively for untwinned datasets, and 0.375, 0.2 for perfectly twinned datasets.

5 Model quality [i](#)

5.1 Standard geometry [i](#)

Bond lengths and bond angles in the following residue types are not validated in this section: GOL, MG, TRS, WAA, HEM

The Z score for a bond length (or angle) is the number of standard deviations the observed value is removed from the expected value. A bond length (or angle) with $|Z| > 5$ is considered an outlier worth inspection. RMSZ is the root-mean-square of all Z scores of the bond lengths (or angles).

Mol	Chain	Bond lengths		Bond angles	
		RMSZ	$\# Z > 5$	RMSZ	$\# Z > 5$
1	A	0.58	0/4011	0.70	1/5418 (0.0%)
1	B	0.59	0/3982	0.69	0/5375
All	All	0.59	0/7993	0.70	1/10793 (0.0%)

There are no bond length outliers.

All (1) bond angle outliers are listed below:

Mol	Chain	Res	Type	Atoms	Z	Observed(°)	Ideal(°)
1	A	66	ARG	NE-CZ-NH2	7.29	123.94	120.30

There are no chirality outliers.

There are no planarity outliers.

5.2 Too-close contacts [i](#)

In the following table, the Non-H and H(model) columns list the number of non-hydrogen atoms and hydrogen atoms in the chain respectively. The H(added) column lists the number of hydrogen atoms added and optimized by MolProbity. The Clashes column lists the number of clashes within the asymmetric unit, whereas Symm-Clashes lists symmetry related clashes.

Mol	Chain	Non-H	H(model)	H(added)	Clashes	Symm-Clashes
1	A	3920	0	3872	16	0
1	B	3897	0	3851	17	0
2	A	86	0	60	4	0
2	B	86	0	60	6	0
3	A	36	0	0	0	0
3	B	36	0	0	0	0
4	A	72	0	96	1	0
4	B	72	0	96	3	0

Continued on next page...

Continued from previous page...

Mol	Chain	Non-H	H(model)	H(added)	Clashes	Symm-Clashes
5	A	8	0	12	0	0
5	B	8	0	12	1	0
6	A	1	0	0	0	0
7	A	502	0	0	4	0
7	B	449	0	0	6	0
All	All	9173	0	8059	45	0

The all-atom clashscore is defined as the number of clashes found per 1000 atoms (including hydrogen atoms). The all-atom clashscore for this structure is 3.

All (45) close contacts within the same asymmetric unit are listed below, sorted by their clash magnitude.

Atom-1	Atom-2	Interatomic distance (Å)	Clash overlap (Å)
1:A:440[B]:LYS:HE3	1:A:442[B]:GLU:OE1	1.72	0.90
1:B:23:ASP:OD2	7:B:601:HOH:O	1.98	0.79
2:A:501[A]:HEM:HMC2	2:A:501[A]:HEM:HBC2	1.70	0.74
1:A:35[A]:GLU:OE1	7:A:601:HOH:O	2.05	0.74
1:A:153[B]:ILE:HG23	1:A:262:LEU:HD23	1.72	0.72
2:B:501[A]:HEM:HBC2	2:B:501[A]:HEM:HMC1	1.71	0.72
2:B:501[A]:HEM:HBB2	2:B:501[A]:HEM:HMB2	1.73	0.70
1:B:153[A]:ILE:HG23	1:B:262:LEU:HD23	1.72	0.70
1:A:440[B]:LYS:CE	1:A:442[B]:GLU:OE1	2.39	0.69
4:A:512:GOL:H12	7:A:953:HOH:O	1.92	0.68
1:A:267:GLU:OE1	7:A:602:HOH:O	2.11	0.68
1:B:158:PHE:CE2	1:B:219:ILE:HD13	2.32	0.64
1:A:158:PHE:CE2	1:A:219[A]:ILE:HD13	2.34	0.63
1:A:158:PHE:HE2	1:A:219[A]:ILE:HD13	1.62	0.63
2:B:501[B]:HEM:HBC2	2:B:501[B]:HEM:HMC2	1.82	0.61
2:A:501[B]:HEM:HMC1	2:A:501[B]:HEM:HBC2	1.81	0.61
1:B:153[B]:ILE:HG13	7:B:620:HOH:O	2.01	0.60
2:A:501[B]:HEM:HMB2	2:A:501[B]:HEM:HBB2	1.84	0.59
1:B:158:PHE:HE2	1:B:219:ILE:CD1	2.17	0.57
1:B:448:ALA:O	5:B:512:TRS:H21	2.05	0.57
1:B:153[A]:ILE:CG2	1:B:262:LEU:HD23	2.34	0.56
1:A:153[B]:ILE:CG2	1:A:262:LEU:HD23	2.37	0.54
1:B:153[A]:ILE:HG23	1:B:262:LEU:CD2	2.37	0.53
1:A:153[B]:ILE:HG23	1:A:262:LEU:CD2	2.38	0.53
2:B:501[A]:HEM:HBB2	2:B:501[A]:HEM:CMB	2.40	0.52
2:B:501[A]:HEM:HBC2	2:B:501[A]:HEM:CMC	2.40	0.51
1:A:367:TRP:HB2	1:A:371:VAL:HG12	1.92	0.51
1:B:158:PHE:CE2	1:B:219:ILE:CD1	2.93	0.51

Continued on next page...

Continued from previous page...

Atom-1	Atom-2	Interatomic distance (Å)	Clash overlap (Å)
2:A:501[A]:HEM:CMC	2:A:501[A]:HEM:HBC2	2.40	0.50
1:B:158:PHE:HD2	1:B:219:ILE:HG21	1.77	0.49
1:B:397:GLN:OE1	4:B:511[A]:GOL:H31	2.13	0.48
1:B:264:ALA:HB1	7:B:624:HOH:O	2.14	0.48
1:A:267:GLU:HB3	1:A:438[A]:THR:HG21	1.97	0.47
1:A:388:HIS:HA	1:A:391:LYS:HD3	1.98	0.46
1:B:97:LYS:HD3	4:B:511[B]:GOL:H32	1.98	0.46
1:B:110[A]:GLN:HG2	7:B:952:HOH:O	2.16	0.45
1:A:264:ALA:HB1	7:A:684:HOH:O	2.16	0.44
4:B:511[B]:GOL:O1	7:B:602:HOH:O	2.21	0.44
2:B:501[B]:HEM:CMC	2:B:501[B]:HEM:HBC2	2.48	0.43
1:A:158:PHE:HD2	1:A:219[A]:ILE:HG21	1.82	0.43
1:B:301:PRO:HA	7:B:606:HOH:O	2.19	0.43
1:B:356[A]:LEU:HD23	1:B:359:GLN:HG3	2.01	0.43
1:B:81:PHE:HB3	1:B:209:ILE:HG12	2.01	0.43
1:A:120:VAL:HG11	1:A:302:VAL:HG13	2.00	0.42
1:A:148:LEU:HD21	1:A:413:VAL:HG21	2.02	0.41

There are no symmetry-related clashes.

5.3 Torsion angles ⓘ

5.3.1 Protein backbone ⓘ

In the following table, the Percentiles column shows the percent Ramachandran outliers of the chain as a percentile score with respect to all X-ray entries followed by that with respect to entries of similar resolution.

The Analysed column shows the number of residues for which the backbone conformation was analysed, and the total number of residues.

Mol	Chain	Analysed	Favoured	Allowed	Outliers	Percentiles	
1	A	484/456 (106%)	471 (97%)	13 (3%)	0	100	100
1	B	480/456 (105%)	464 (97%)	16 (3%)	0	100	100
All	All	964/912 (106%)	935 (97%)	29 (3%)	0	100	100

There are no Ramachandran outliers to report.

5.3.2 Protein sidechains [i](#)

In the following table, the Percentiles column shows the percent sidechain outliers of the chain as a percentile score with respect to all X-ray entries followed by that with respect to entries of similar resolution.

The Analysed column shows the number of residues for which the sidechain conformation was analysed, and the total number of residues.

Mol	Chain	Analysed	Rotameric	Outliers	Percentiles	
1	A	430/400 (108%)	429 (100%)	1 (0%)	93	80
1	B	426/400 (106%)	423 (99%)	3 (1%)	84	60
All	All	856/800 (107%)	852 (100%)	4 (0%)	88	68

All (4) residues with a non-rotameric sidechain are listed below:

Mol	Chain	Res	Type
1	A	148	LEU
1	B	1	THR
1	B	148	LEU
1	B	158	PHE

Some sidechains can be flipped to improve hydrogen bonding and reduce clashes. There are no such sidechains identified.

5.3.3 RNA [i](#)

There are no RNA molecules in this entry.

5.4 Non-standard residues in protein, DNA, RNA chains [i](#)

There are no non-standard protein/DNA/RNA residues in this entry.

5.5 Carbohydrates [i](#)

There are no monosaccharides in this entry.

5.6 Ligand geometry [i](#)

Of 33 ligands modelled in this entry, 1 is monoatomic - leaving 32 for Mogul analysis.

In the following table, the Counts columns list the number of bonds (or angles) for which Mogul statistics could be retrieved, the number of bonds (or angles) that are observed in the model and the number of bonds (or angles) that are defined in the Chemical Component Dictionary. The Link column lists molecule types, if any, to which the group is linked. The Z score for a bond length (or angle) is the number of standard deviations the observed value is removed from the expected value. A bond length (or angle) with $|Z| > 2$ is considered an outlier worth inspection. RMSZ is the root-mean-square of all Z scores of the bond lengths (or angles).

Mol	Type	Chain	Res	Link	Bond lengths			Bond angles		
					Counts	RMSZ	$\# Z > 2$	Counts	RMSZ	$\# Z > 2$
4	GOL	B	505[A]	-	5,5,5	0.14	0	5,5,5	0.32	0
2	HEM	A	501[B]	1,7	27,50,50	1.01	3 (11%)	17,82,82	1.20	0
4	GOL	B	505[B]	-	5,5,5	0.13	0	5,5,5	0.34	0
4	GOL	A	503	-	5,5,5	0.09	0	5,5,5	0.28	0
4	GOL	A	511[B]	-	5,5,5	0.09	0	5,5,5	0.24	0
4	GOL	A	507	-	5,5,5	0.13	0	5,5,5	0.39	0
4	GOL	B	507	-	5,5,5	0.17	0	5,5,5	0.40	0
4	GOL	B	511[B]	-	5,5,5	0.07	0	5,5,5	0.28	0
4	GOL	B	511[A]	-	5,5,5	0.09	0	5,5,5	0.24	0
4	GOL	A	505	-	5,5,5	0.11	0	5,5,5	0.30	0
4	GOL	A	509	-	5,5,5	0.17	0	5,5,5	0.38	0
4	GOL	A	508	-	5,5,5	0.13	0	5,5,5	0.34	0
5	TRS	B	512	-	7,7,7	0.21	0	9,9,9	0.41	0
4	GOL	A	513	-	5,5,5	0.11	0	5,5,5	0.22	0
4	GOL	B	509	-	5,5,5	0.12	0	5,5,5	0.44	0
4	GOL	A	511[A]	-	5,5,5	0.09	0	5,5,5	0.20	0
4	GOL	B	510[B]	-	5,5,5	0.07	0	5,5,5	0.25	0
4	GOL	A	510	-	5,5,5	0.06	0	5,5,5	0.18	0
2	HEM	B	501[A]	1,7	27,50,50	0.97	3 (11%)	17,82,82	1.29	2 (11%)
4	GOL	B	508	-	5,5,5	0.20	0	5,5,5	0.41	0
4	GOL	A	512	-	5,5,5	0.09	0	5,5,5	0.25	0
2	HEM	B	501[B]	1,7	27,50,50	0.99	2 (7%)	17,82,82	1.55	3 (17%)
3	WAA	A	502	-	36,40,40	0.90	1 (2%)	41,61,61	1.13	4 (9%)
4	GOL	B	506	-	5,5,5	0.11	0	5,5,5	0.27	0
4	GOL	A	504	-	5,5,5	0.12	0	5,5,5	0.36	0
3	WAA	B	502	-	36,40,40	0.79	0	41,61,61	1.44	5 (12%)
4	GOL	B	503	-	5,5,5	0.09	0	5,5,5	0.38	0
2	HEM	A	501[A]	1,7	27,50,50	0.93	2 (7%)	17,82,82	1.47	2 (11%)
5	TRS	A	514	-	7,7,7	0.18	0	9,9,9	0.38	0
4	GOL	B	510[A]	-	5,5,5	0.09	0	5,5,5	0.30	0
4	GOL	B	504	-	5,5,5	0.07	0	5,5,5	0.33	0
4	GOL	A	506	-	5,5,5	0.16	0	5,5,5	0.67	0

In the following table, the Chirals column lists the number of chiral outliers, the number of chiral

centers analysed, the number of these observed in the model and the number defined in the Chemical Component Dictionary. Similar counts are reported in the Torsion and Rings columns. '-' means no outliers of that kind were identified.

Mol	Type	Chain	Res	Link	Chirals	Torsions	Rings
4	GOL	B	505[A]	-	-	0/4/4/4	-
2	HEM	A	501[B]	1,7	-	0/6/54/54	-
4	GOL	B	505[B]	-	-	0/4/4/4	-
4	GOL	A	503	-	-	3/4/4/4	-
4	GOL	A	511[B]	-	-	1/4/4/4	-
4	GOL	A	507	-	-	0/4/4/4	-
4	GOL	B	507	-	-	2/4/4/4	-
4	GOL	B	511[B]	-	-	0/4/4/4	-
4	GOL	B	511[A]	-	-	2/4/4/4	-
4	GOL	A	505	-	-	2/4/4/4	-
4	GOL	A	509	-	-	2/4/4/4	-
4	GOL	A	508	-	-	2/4/4/4	-
5	TRS	B	512	-	-	0/9/9/9	-
4	GOL	A	513	-	-	0/4/4/4	-
4	GOL	B	509	-	-	2/4/4/4	-
4	GOL	A	511[A]	-	-	0/4/4/4	-
4	GOL	B	510[B]	-	-	0/4/4/4	-
4	GOL	A	510	-	-	2/4/4/4	-
2	HEM	B	501[A]	1,7	-	0/6/54/54	-
4	GOL	B	508	-	-	2/4/4/4	-
4	GOL	A	512	-	-	1/4/4/4	-
2	HEM	B	501[B]	1,7	-	0/6/54/54	-
3	WAA	A	502	-	-	3/17/66/66	0/5/5/5
4	GOL	B	506	-	-	0/4/4/4	-
4	GOL	A	504	-	-	0/4/4/4	-
3	WAA	B	502	-	-	4/17/66/66	0/5/5/5
4	GOL	B	503	-	-	3/4/4/4	-
2	HEM	A	501[A]	1,7	-	0/6/54/54	-
5	TRS	A	514	-	-	6/9/9/9	-
4	GOL	B	510[A]	-	-	2/4/4/4	-
4	GOL	B	504	-	-	2/4/4/4	-
4	GOL	A	506	-	-	2/4/4/4	-

All (11) bond length outliers are listed below:

Mol	Chain	Res	Type	Atoms	Z	Observed(Å)	Ideal(Å)
2	A	501[A]	HEM	C4D-C3D	2.86	1.49	1.42
2	A	501[B]	HEM	C4D-C3D	2.59	1.48	1.42
2	A	501[B]	HEM	C3B-C2B	-2.57	1.36	1.40
2	B	501[A]	HEM	C4D-C3D	2.55	1.48	1.42
2	B	501[A]	HEM	C3B-C2B	-2.52	1.36	1.40
2	B	501[B]	HEM	C3B-C2B	-2.48	1.36	1.40
2	B	501[B]	HEM	C4D-C3D	2.43	1.48	1.42
2	A	501[A]	HEM	C3B-C2B	-2.34	1.37	1.40
2	A	501[B]	HEM	C1A-NA	2.15	1.40	1.36
3	A	502	WAA	CZ3-CE3	2.05	1.41	1.36
2	B	501[A]	HEM	C1A-NA	2.05	1.40	1.36

All (16) bond angle outliers are listed below:

Mol	Chain	Res	Type	Atoms	Z	Observed(°)	Ideal(°)
3	B	502	WAA	CB-CA-N	4.71	117.57	109.01
2	B	501[B]	HEM	C1D-C2D-C3D	-3.38	104.64	107.00
2	B	501[B]	HEM	CAA-CBA-CGA	3.24	118.11	112.67
3	B	502	WAA	CB-CG-CD1	-3.19	124.03	127.97
3	B	502	WAA	C6-C7-C14	-3.06	104.57	109.18
3	B	502	WAA	CB-CG-CD2	2.77	130.56	126.25
2	A	501[A]	HEM	CMA-C3A-C4A	-2.76	124.23	128.46
2	A	501[A]	HEM	CBD-CAD-C3D	-2.52	107.83	112.48
3	A	502	WAA	CB-CA-N	2.43	113.42	109.01
3	B	502	WAA	CA-N-C1	2.38	124.85	121.66
3	A	502	WAA	C6-C7-C14	-2.33	105.66	109.18
2	B	501[A]	HEM	C1D-C2D-C3D	-2.31	105.39	107.00
3	A	502	WAA	CA-N-C1	2.13	124.52	121.66
3	A	502	WAA	CB-CG-CD1	-2.09	125.38	127.97
2	B	501[B]	HEM	CBD-CAD-C3D	-2.09	108.63	112.48
2	B	501[A]	HEM	CMA-C3A-C4A	-2.06	125.30	128.46

There are no chirality outliers.

All (43) torsion outliers are listed below:

Mol	Chain	Res	Type	Atoms
4	B	507	GOL	O1-C1-C2-C3
4	A	505	GOL	C1-C2-C3-O3
4	B	509	GOL	C1-C2-C3-O3
4	A	510	GOL	O1-C1-C2-C3
4	B	508	GOL	O1-C1-C2-C3
5	A	514	TRS	C2-C-C3-O3

Continued on next page...

Continued from previous page...

Mol	Chain	Res	Type	Atoms
5	A	514	TRS	N-C-C3-O3
4	B	504	GOL	O1-C1-C2-C3
4	A	506	GOL	O1-C1-C2-C3
4	B	511[A]	GOL	O2-C2-C3-O3
4	A	508	GOL	O2-C2-C3-O3
4	A	506	GOL	O1-C1-C2-O2
4	A	503	GOL	C1-C2-C3-O3
4	B	511[A]	GOL	C1-C2-C3-O3
4	A	509	GOL	C1-C2-C3-O3
4	A	508	GOL	C1-C2-C3-O3
4	A	512	GOL	C1-C2-C3-O3
4	B	503	GOL	O1-C1-C2-C3
4	B	503	GOL	C1-C2-C3-O3
4	B	510[A]	GOL	O1-C1-C2-C3
4	A	503	GOL	O2-C2-C3-O3
4	A	505	GOL	O2-C2-C3-O3
4	A	509	GOL	O2-C2-C3-O3
4	B	509	GOL	O2-C2-C3-O3
4	B	508	GOL	O1-C1-C2-O2
4	A	510	GOL	O1-C1-C2-O2
4	B	504	GOL	O1-C1-C2-O2
4	A	503	GOL	O1-C1-C2-O2
4	B	503	GOL	O1-C1-C2-O2
5	A	514	TRS	C3-C-C1-O1
5	A	514	TRS	C1-C-C3-O3
3	B	502	WAA	C-CA-N-C1
3	B	502	WAA	O1-C1-C2-C3
5	A	514	TRS	C2-C-C1-O1
4	B	507	GOL	O1-C1-C2-O2
4	B	510[A]	GOL	O1-C1-C2-O2
3	A	502	WAA	C-CA-N-C1
5	A	514	TRS	N-C-C1-O1
4	A	511[B]	GOL	O1-C1-C2-C3
3	B	502	WAA	CB-CA-N-C1
3	A	502	WAA	O1-C1-C2-C3
3	A	502	WAA	N-C1-C2-C3
3	B	502	WAA	N-C1-C2-C3

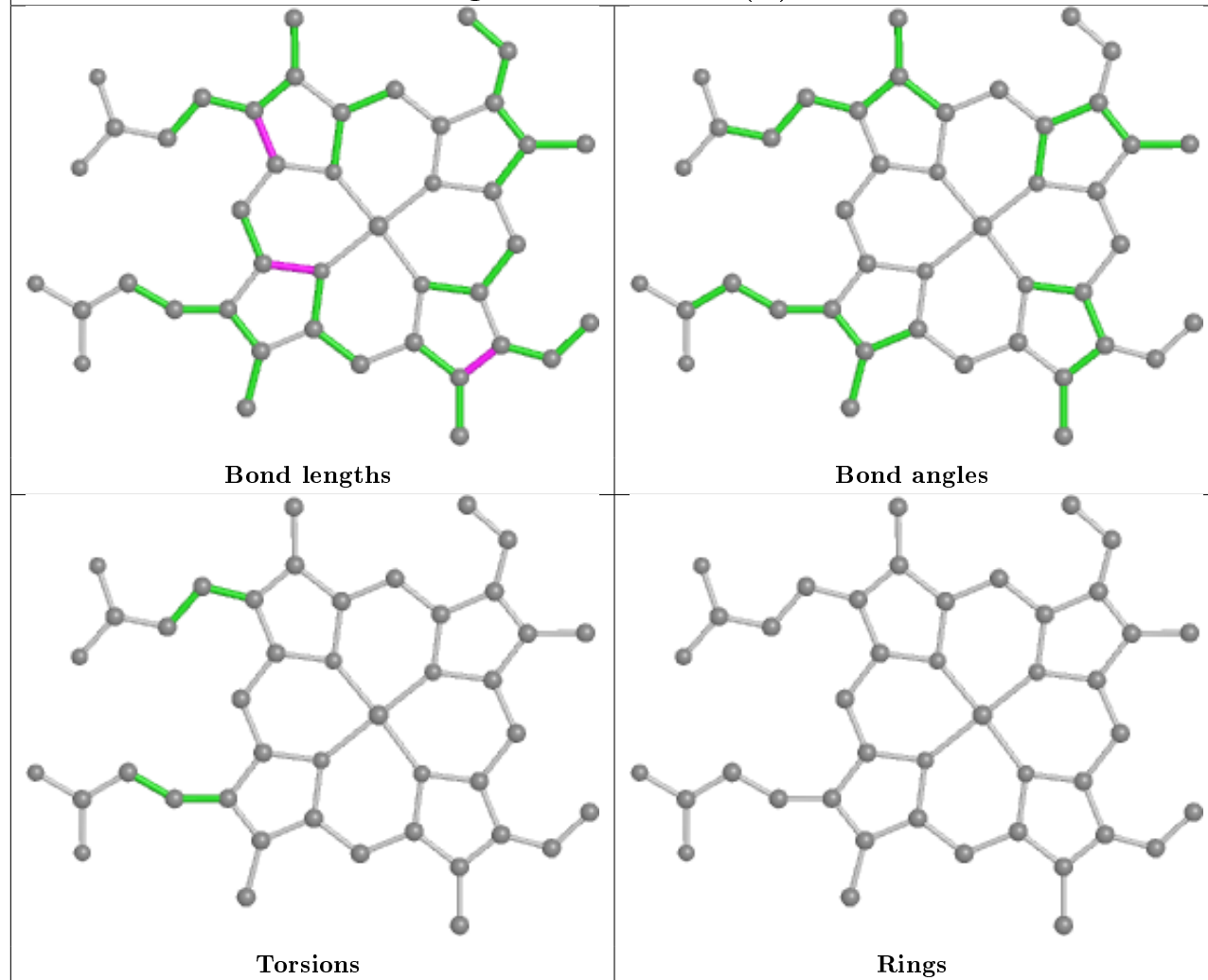
There are no ring outliers.

8 monomers are involved in 15 short contacts:

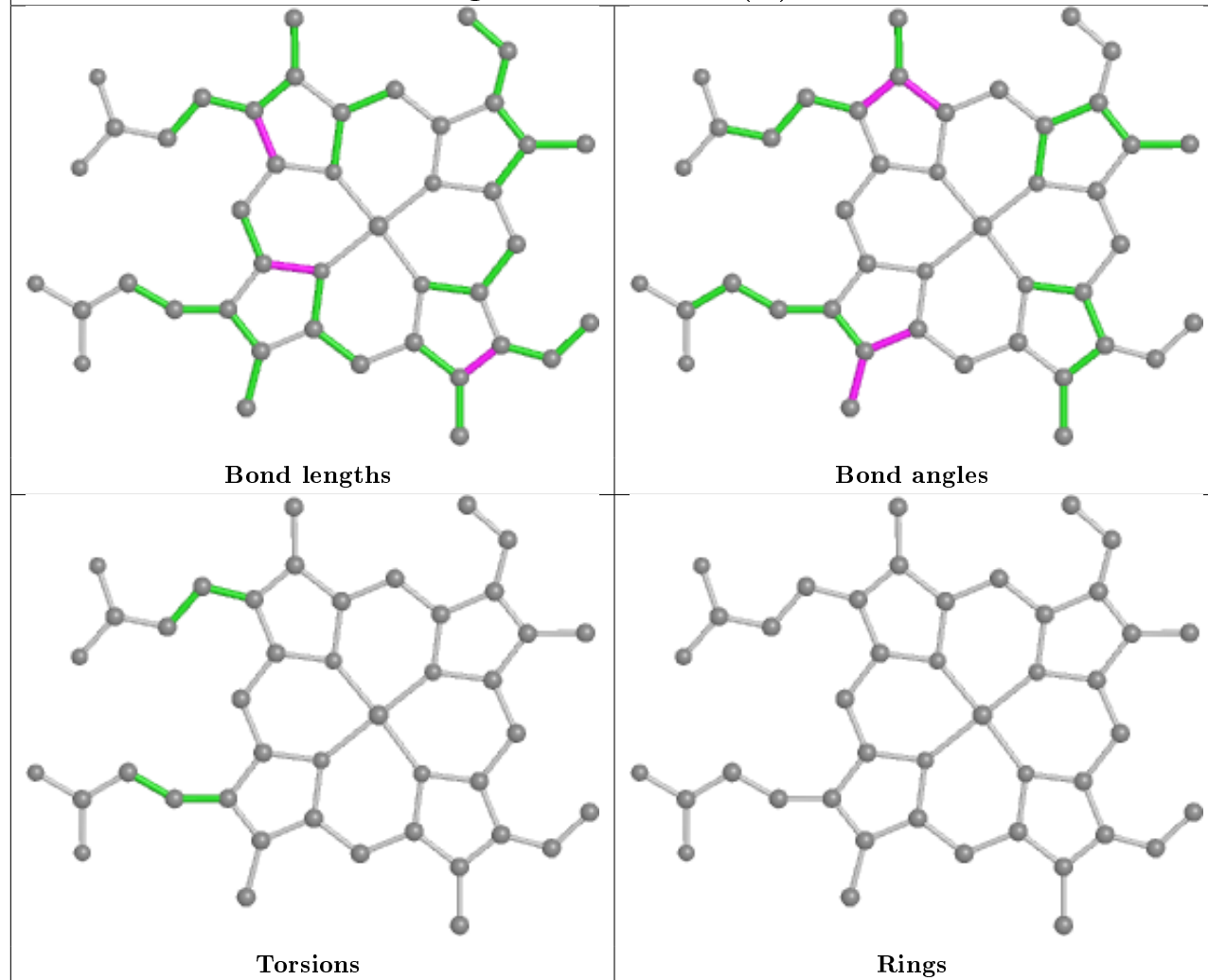
Mol	Chain	Res	Type	Clashes	Symm-Clashes
2	A	501[B]	HEM	2	0
4	B	511[B]	GOL	2	0
4	B	511[A]	GOL	1	0
5	B	512	TRS	1	0
2	B	501[A]	HEM	4	0
4	A	512	GOL	1	0
2	B	501[B]	HEM	2	0
2	A	501[A]	HEM	2	0

The following is a two-dimensional graphical depiction of Mogul quality analysis of bond lengths, bond angles, torsion angles, and ring geometry for all instances of the Ligand of Interest. In addition, ligands with molecular weight > 250 and outliers as shown on the validation Tables will also be included. For torsion angles, if less than 5% of the Mogul distribution of torsion angles is within 10 degrees of the torsion angle in question, then that torsion angle is considered an outlier. Any bond that is central to one or more torsion angles identified as an outlier by Mogul will be highlighted in the graph. For rings, the root-mean-square deviation (RMSD) between the ring in question and similar rings identified by Mogul is calculated over all ring torsion angles. If the average RMSD is greater than 60 degrees and the minimal RMSD between the ring in question and any Mogul-identified rings is also greater than 60 degrees, then that ring is considered an outlier. The outliers are highlighted in purple. The color gray indicates Mogul did not find sufficient equivalents in the CSD to analyse the geometry.

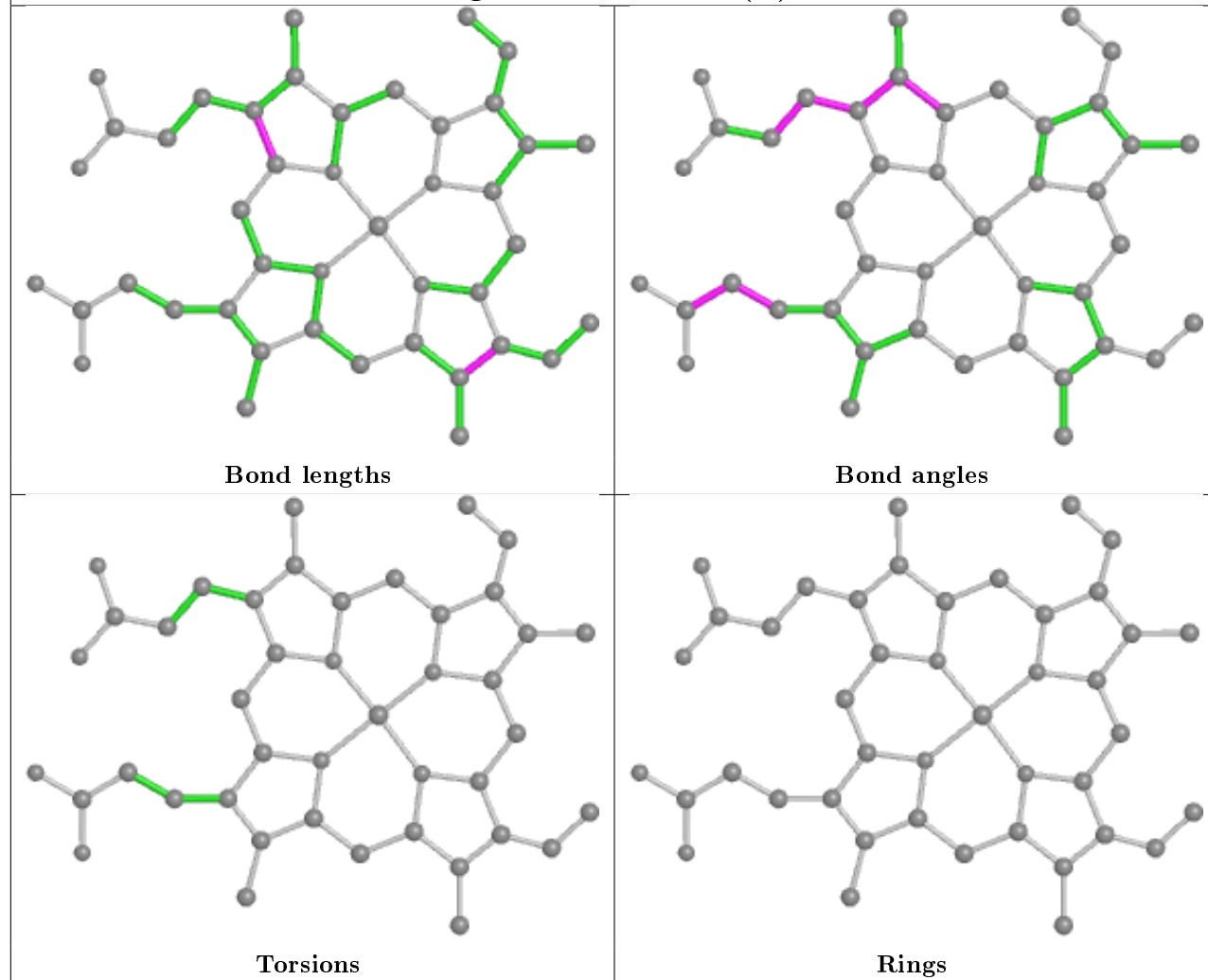
Ligand HEM A 501 (B)

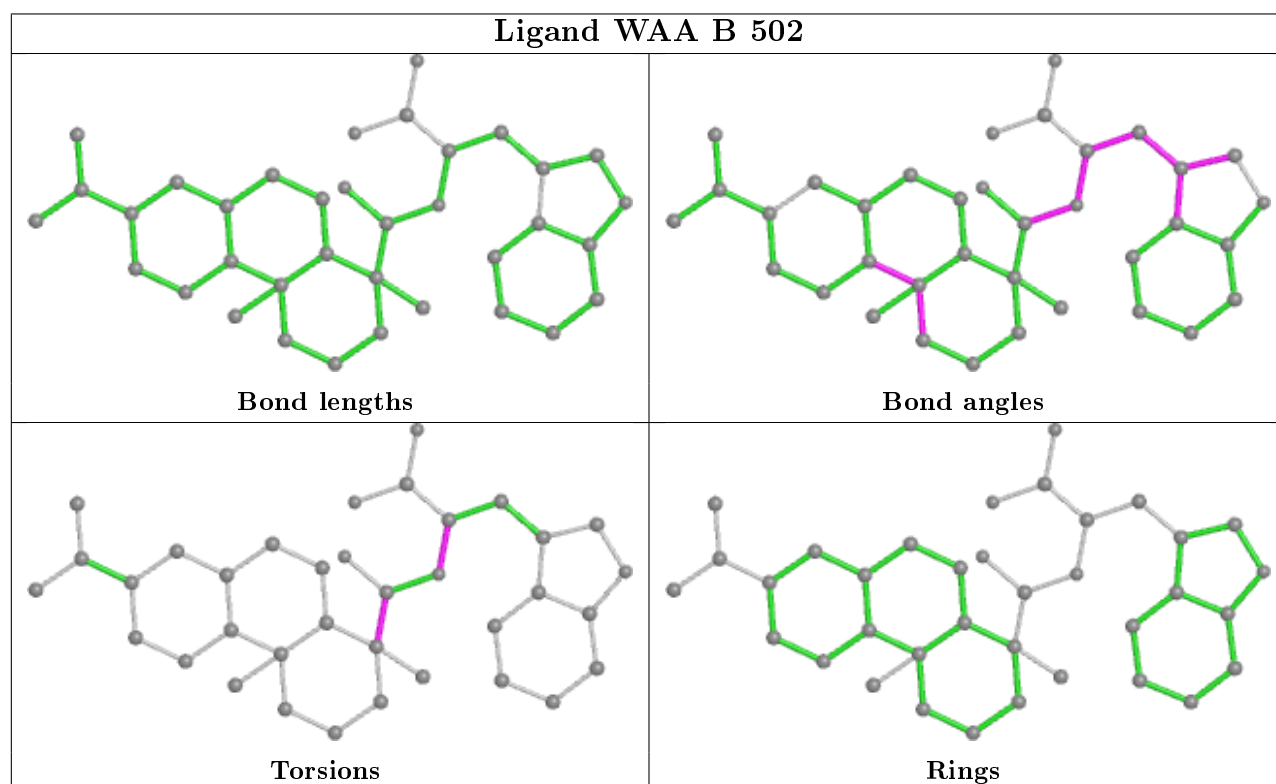
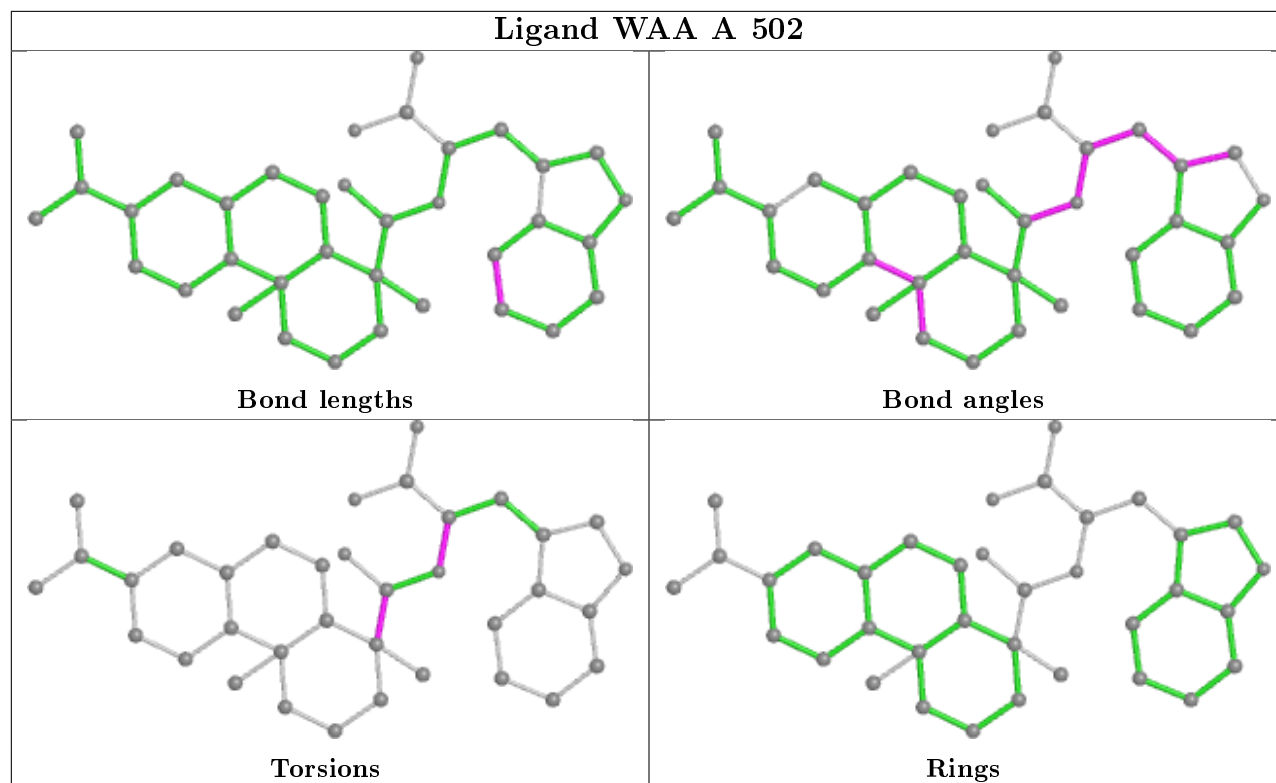


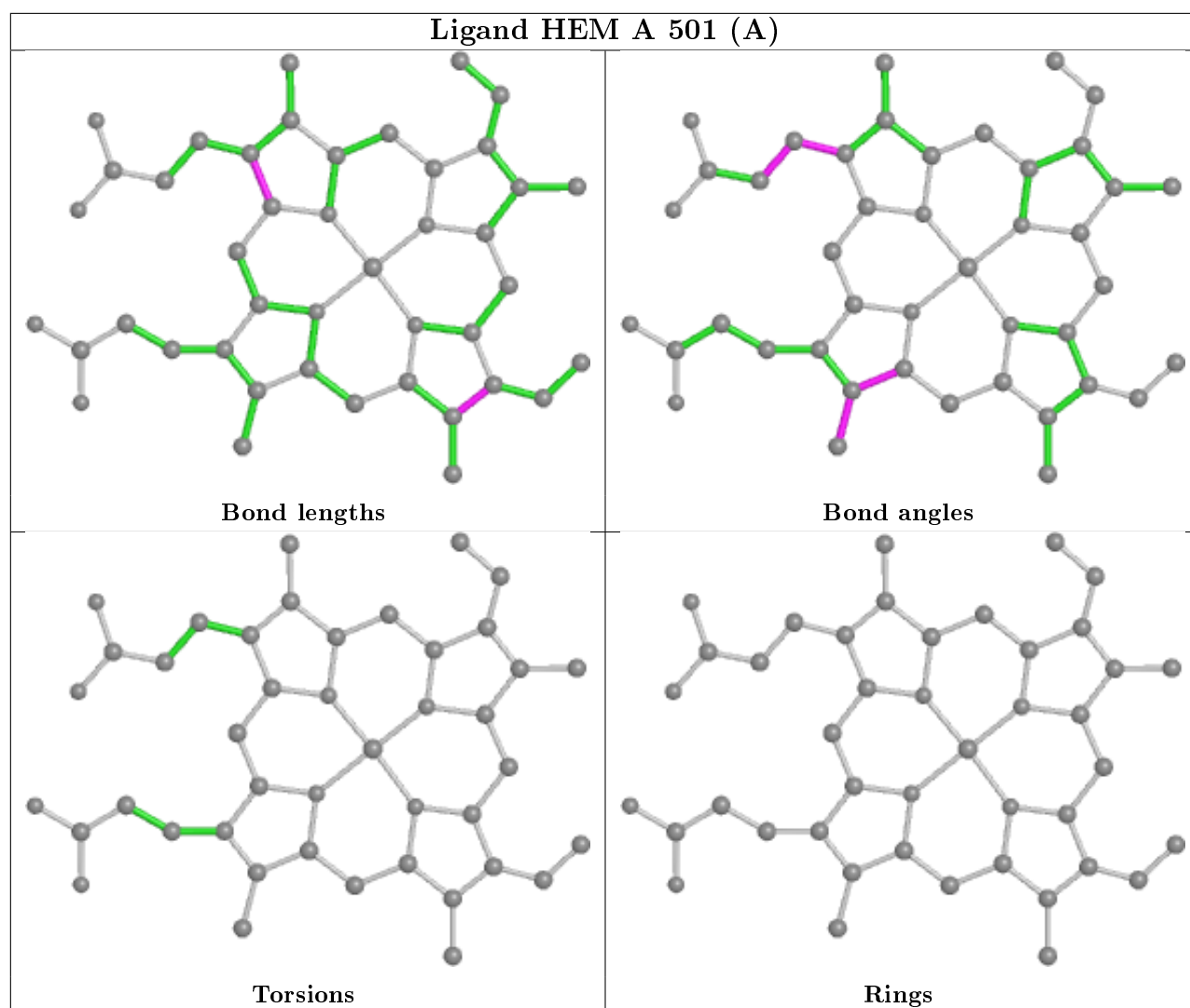
Ligand HEM B 501 (A)



Ligand HEM B 501 (B)







5.7 Other polymers [i](#)

There are no such residues in this entry.

5.8 Polymer linkage issues [i](#)

There are no chain breaks in this entry.

6 Fit of model and data ⓘ

6.1 Protein, DNA and RNA chains ⓘ

In the following table, the column labelled ‘#RSRZ> 2’ contains the number (and percentage) of RSRZ outliers, followed by percent RSRZ outliers for the chain as percentile scores relative to all X-ray entries and entries of similar resolution. The OWAB column contains the minimum, median, 95th percentile and maximum values of the occupancy-weighted average B-factor per residue. The column labelled ‘Q< 0.9’ lists the number of (and percentage) of residues with an average occupancy less than 0.9.

Mol	Chain	Analysed	<RSRZ>	#RSRZ>2	OWAB(Å ²)	Q<0.9
1	A	455/456 (99%)	-0.06	20 (4%) 34 33	11, 17, 33, 60	0
1	B	455/456 (99%)	0.04	22 (4%) 30 29	11, 18, 37, 78	0
All	All	910/912 (99%)	-0.01	42 (4%) 32 31	11, 18, 34, 78	0

All (42) RSRZ outliers are listed below:

Mol	Chain	Res	Type	RSRZ
1	B	2	ILE	10.6
1	B	1	THR	10.2
1	A	1	THR	8.3
1	A	2	ILE	7.1
1	B	191	ALA	6.8
1	B	4	GLU	5.9
1	B	197	ALA	5.6
1	B	196	PRO	4.8
1	A	198	TYR	4.7
1	A	192	ASN	4.0
1	A	196	PRO	4.0
1	A	197	ALA	4.0
1	A	191	ALA	3.8
1	B	198	TYR	3.5
1	B	3	LYS	3.4
1	A	194	ASP	3.4
1	B	13	GLU	3.3
1	A	195	ASP	3.3
1	A	136[A]	ASP	3.2
1	B	199	ASP	3.2
1	B	194	ASP	3.1
1	B	192	ASN	3.0
1	B	195	ASP	2.9
1	A	193	PRO	2.8

Continued on next page...

Continued from previous page...

Mol	Chain	Res	Type	RSRZ
1	A	200	GLU	2.7
1	A	3	LYS	2.7
1	B	203	ARG	2.6
1	A	227	GLY	2.5
1	B	228	GLU	2.5
1	A	203	ARG	2.4
1	A	199	ASP	2.4
1	B	136	ASP	2.4
1	A	454	PRO	2.3
1	B	231	ASP	2.3
1	B	200	GLU	2.3
1	A	302	VAL	2.3
1	B	207	GLU	2.2
1	B	302	VAL	2.2
1	A	231	ASP	2.2
1	B	5	MET	2.1
1	B	225	ALA	2.1
1	A	4	GLU	2.0

6.2 Non-standard residues in protein, DNA, RNA chains [i](#)

There are no non-standard protein/DNA/RNA residues in this entry.

6.3 Carbohydrates [i](#)

There are no monosaccharides in this entry.

6.4 Ligands [i](#)

In the following table, the Atoms column lists the number of modelled atoms in the group and the number defined in the chemical component dictionary. The B-factors column lists the minimum, median, 95th percentile and maximum values of B factors of atoms in the group. The column labelled 'Q< 0.9' lists the number of atoms with occupancy less than 0.9.

Mol	Type	Chain	Res	Atoms	RSCC	RSR	B-factors(Å ²)	Q<0.9
4	GOL	A	508	6/6	0.60	0.18	44,49,50,57	0
4	GOL	A	509	6/6	0.69	0.21	35,51,56,57	0
4	GOL	B	511[B]	6/6	0.76	0.35	21,25,25,29	6
4	GOL	B	511[A]	6/6	0.76	0.35	47,53,54,58	6
4	GOL	B	509	6/6	0.77	0.29	36,40,50,54	0

Continued on next page...

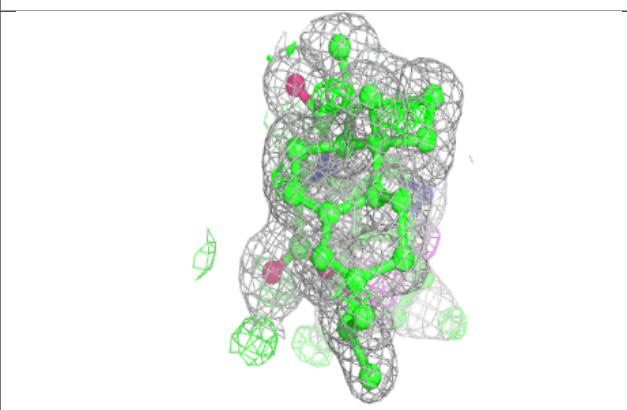
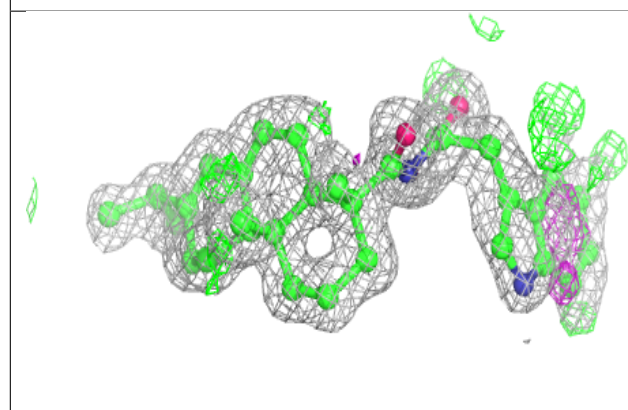
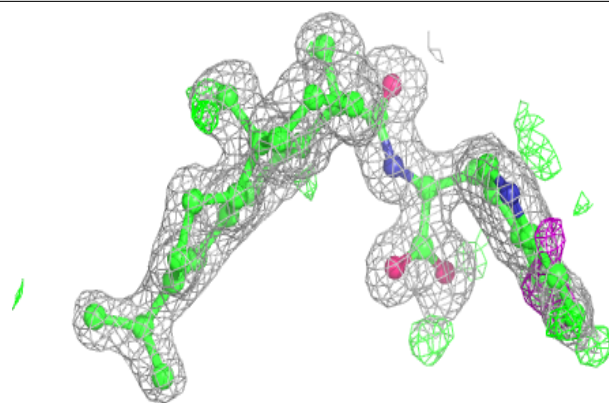
Continued from previous page...

Mol	Type	Chain	Res	Atoms	RSCC	RSR	B-factors(Å ²)	Q<0.9
5	TRS	B	512	8/8	0.80	0.24	32,40,45,48	0
4	GOL	B	508	6/6	0.80	0.20	27,31,35,48	0
4	GOL	A	504	6/6	0.80	0.15	29,32,36,42	0
4	GOL	A	506	6/6	0.80	0.22	33,38,44,45	0
4	GOL	B	505[B]	6/6	0.83	0.18	16,23,29,29	6
4	GOL	A	505	6/6	0.83	0.13	44,53,58,64	0
4	GOL	B	505[A]	6/6	0.83	0.18	23,30,33,36	6
5	TRS	A	514	8/8	0.84	0.23	24,36,41,50	0
4	GOL	B	504	6/6	0.86	0.09	40,43,44,48	0
4	GOL	A	511[A]	6/6	0.87	0.26	29,31,32,33	6
4	GOL	A	511[B]	6/6	0.87	0.26	61,62,64,71	6
4	GOL	A	510	6/6	0.88	0.25	39,41,44,46	0
4	GOL	A	503	6/6	0.88	0.15	40,44,48,49	0
4	GOL	B	507	6/6	0.88	0.20	23,32,39,43	0
4	GOL	B	510[A]	6/6	0.89	0.23	21,35,40,42	6
4	GOL	B	510[B]	6/6	0.89	0.23	23,25,26,27	6
4	GOL	B	506	6/6	0.89	0.13	36,47,59,64	0
3	WAA	B	502	36/36	0.90	0.10	17,21,34,38	0
4	GOL	A	513	6/6	0.91	0.23	28,36,41,43	0
4	GOL	A	512	6/6	0.92	0.17	21,43,49,52	0
4	GOL	B	503	6/6	0.92	0.13	20,35,41,41	0
3	WAA	A	502	36/36	0.93	0.08	16,20,30,32	0
6	MG	A	515	1/1	0.95	0.23	33,33,33,33	0
4	GOL	A	507	6/6	0.96	0.14	15,23,33,46	0
2	HEM	B	501[B]	43/43	0.99	0.07	9,11,13,15	43
2	HEM	A	501[B]	43/43	0.99	0.08	10,11,12,15	43
2	HEM	B	501[A]	43/43	0.99	0.07	10,11,12,12	43
2	HEM	A	501[A]	43/43	0.99	0.08	10,11,12,13	43

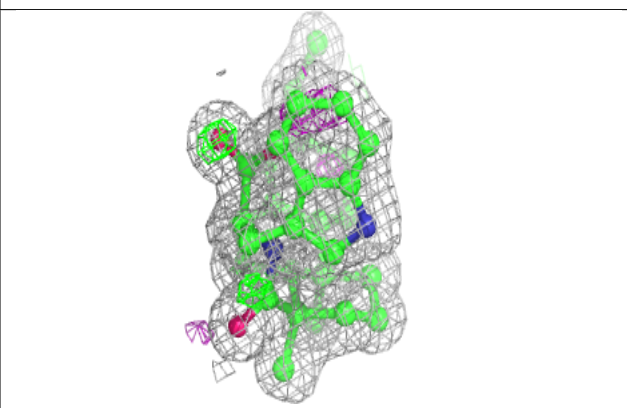
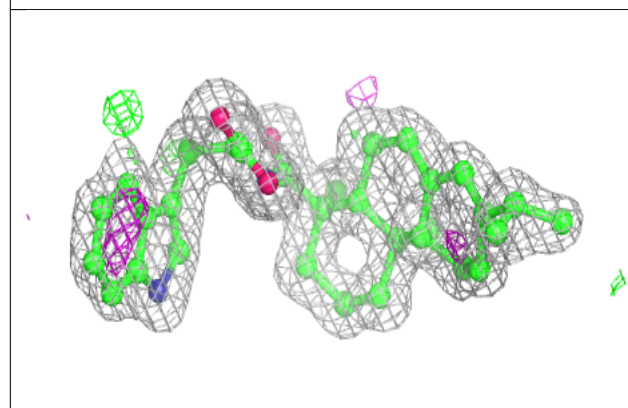
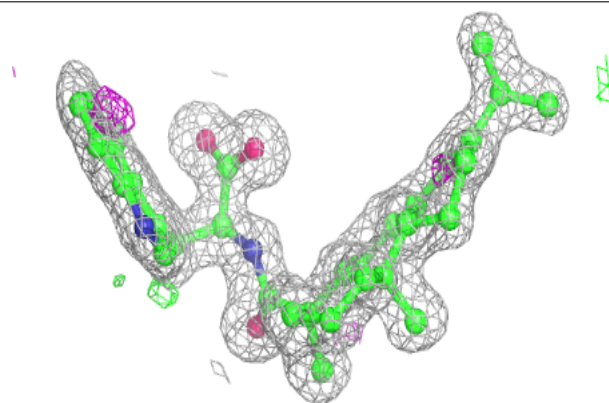
The following is a graphical depiction of the model fit to experimental electron density of all instances of the Ligand of Interest. In addition, ligands with molecular weight > 250 and outliers as shown on the geometry validation Tables will also be included. Each fit is shown from different orientation to approximate a three-dimensional view.

Electron density around WAA B 502:

$2mF_o-DF_c$ (at 0.7 rmsd) in gray
 mF_o-DF_c (at 3 rmsd) in purple (negative)
and green (positive)

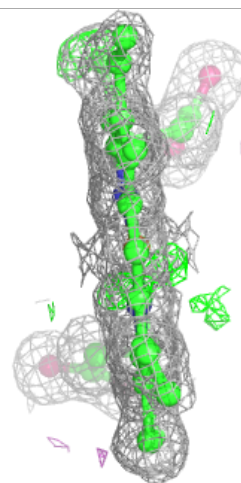
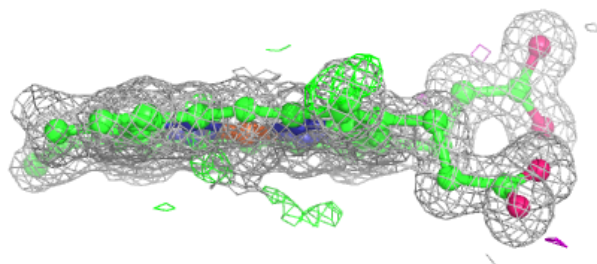
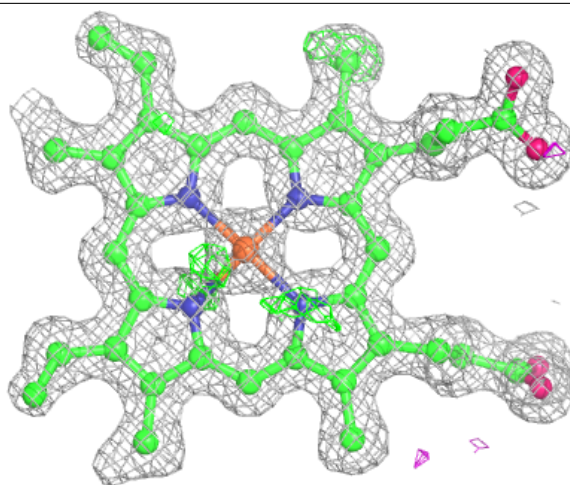
**Electron density around WAA A 502:**

$2mF_o-DF_c$ (at 0.7 rmsd) in gray
 mF_o-DF_c (at 3 rmsd) in purple (negative)
and green (positive)



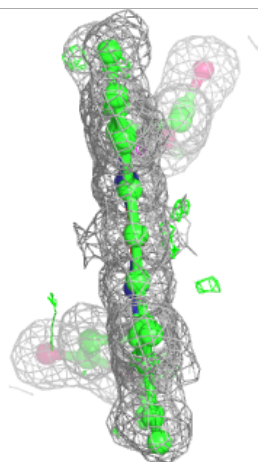
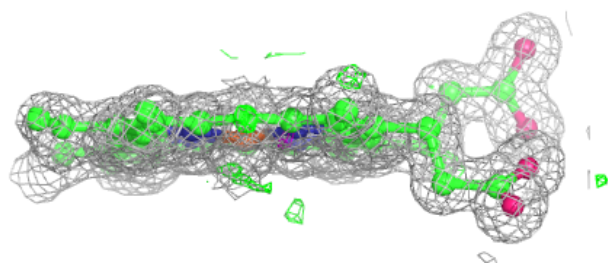
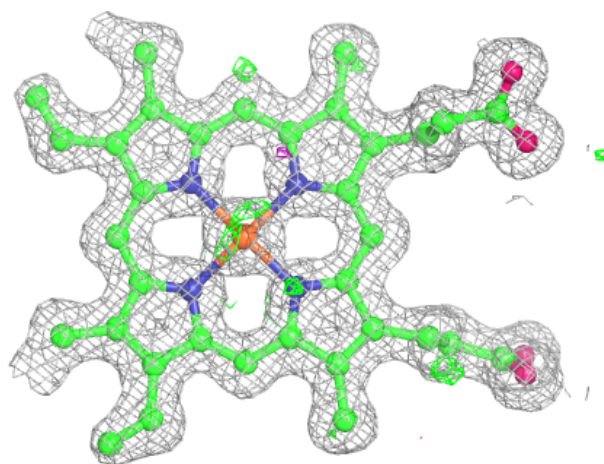
Electron density around HEM B 501 (B):

$2mF_o-DF_c$ (at 0.7 rmsd) in gray
 mF_o-DF_c (at 3 rmsd) in purple (negative)
and green (positive)



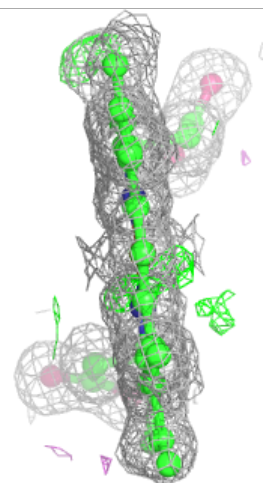
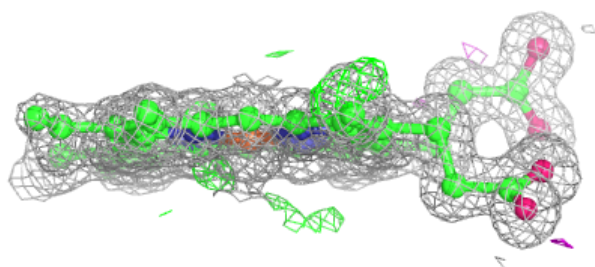
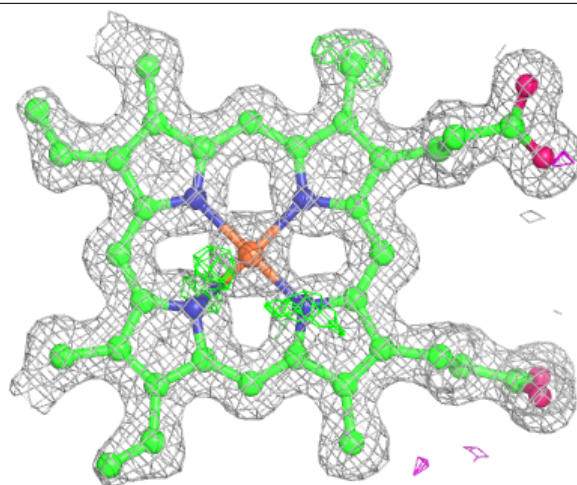
Electron density around HEM A 501 (B):

$2mF_o-DF_c$ (at 0.7 rmsd) in gray
 mF_o-DF_c (at 3 rmsd) in purple (negative)
and green (positive)



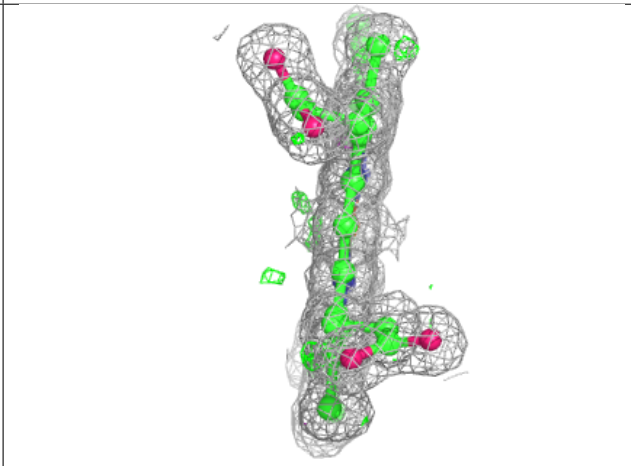
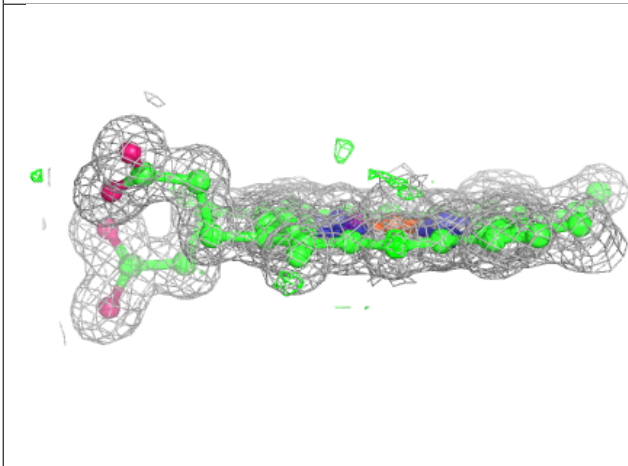
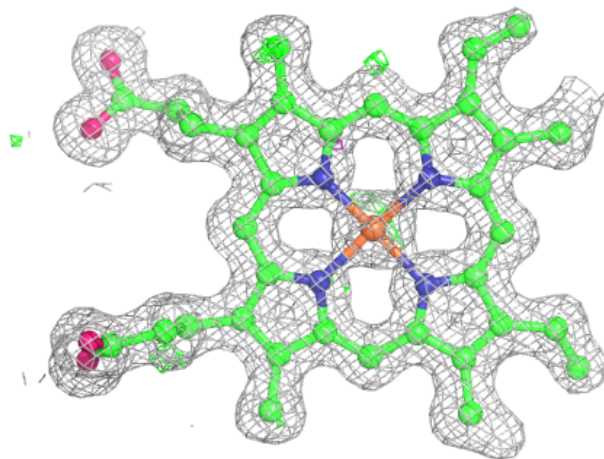
Electron density around HEM B 501 (A):

$2mF_o-DF_c$ (at 0.7 rmsd) in gray
 mF_o-DF_c (at 3 rmsd) in purple (negative)
and green (positive)



Electron density around HEM A 501 (A):

$2mF_o-DF_c$ (at 0.7 rmsd) in gray
 mF_o-DF_c (at 3 rmsd) in purple (negative)
and green (positive)



6.5 Other polymers [i](#)

There are no such residues in this entry.