



Full wwPDB X-ray Structure Validation Report ⓘ

May 14, 2020 – 02:45 pm BST

PDB ID : 4JQ9
Title : Dihydrolipoyl dehydrogenase of Escherichia coli pyruvate dehydrogenase complex
Authors : Tietzel, M.; Neumann, P.; Meyer, D.; Ficner, R.; Tittmann, K.
Deposited on : 2013-03-20
Resolution : 2.17 Å(reported)

This is a Full wwPDB X-ray Structure Validation Report for a publicly released PDB entry.

We welcome your comments at validation@mail.wwpdb.org

A user guide is available at

<https://www.wwpdb.org/validation/2017/XrayValidationReportHelp>

with specific help available everywhere you see the ⓘ symbol.

The following versions of software and data (see [references ⓘ](#)) were used in the production of this report:

MolProbity : 4.02b-467
Mogul : 1.8.5 (274361), CSD as541be (2020)
Xtriage (Phenix) : 1.13
EDS : 2.11
buster-report : 1.1.7 (2018)
Percentile statistics : 20191225.v01 (using entries in the PDB archive December 25th 2019)
Refmac : 5.8.0158
CCP4 : 7.0.044 (Gargrove)
Ideal geometry (proteins) : Engh & Huber (2001)
Ideal geometry (DNA, RNA) : Parkinson et al. (1996)
Validation Pipeline (wwPDB-VP) : 2.11

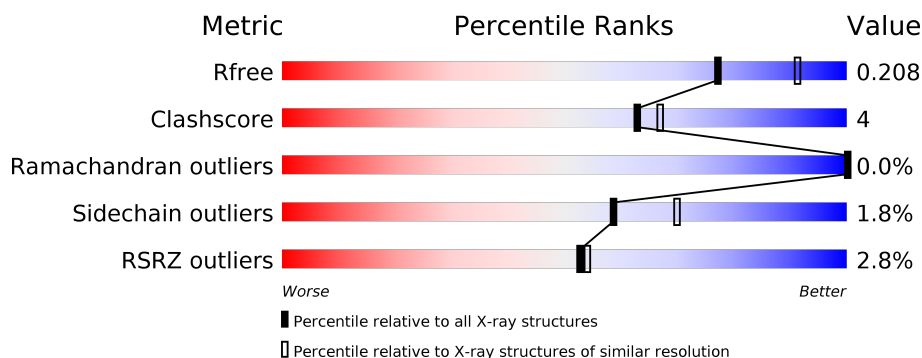
1 Overall quality at a glance

The following experimental techniques were used to determine the structure:

X-RAY DIFFRACTION

The reported resolution of this entry is 2.17 Å.

Percentile scores (ranging between 0-100) for global validation metrics of the entry are shown in the following graphic. The table shows the number of entries on which the scores are based.



Metric	Whole archive (#Entries)	Similar resolution (#Entries, resolution range(Å))
R_{free}	130704	6864 (2.20-2.16)
Clashscore	141614	7689 (2.20-2.16)
Ramachandran outliers	138981	7564 (2.20-2.16)
Sidechain outliers	138945	7564 (2.20-2.16)
RSRZ outliers	127900	6738 (2.20-2.16)

The table below summarises the geometric issues observed across the polymeric chains and their fit to the electron density. The red, orange, yellow and green segments on the lower bar indicate the fraction of residues that contain outliers for ≥ 3 , 2, 1 and 0 types of geometric quality criteria respectively. A grey segment represents the fraction of residues that are not modelled. The numeric value for each fraction is indicated below the corresponding segment, with a dot representing fractions $\leq 5\%$. The upper red bar (where present) indicates the fraction of residues that have poor fit to the electron density. The numeric value is given above the bar.

Mol	Chain	Length	Quality of chain
1	A	474	<div> <div>91%</div> <div>8%</div> <div>.</div> </div>
1	B	474	<div> <div>%</div> <div>94%</div> <div>..</div> </div>
1	C	474	<div> <div>2%</div> <div>90%</div> <div>8%</div> <div>.</div> </div>
1	D	474	<div> <div>5%</div> <div>89%</div> <div>9%</div> <div>..</div> </div>
1	E	474	<div> <div>4%</div> <div>91%</div> <div>7%</div> <div>..</div> </div>
1	F	474	<div> <div>4%</div> <div>88%</div> <div>11%</div> <div>.</div> </div>

The following table lists non-polymeric compounds, carbohydrate monomers and non-standard residues in protein, DNA, RNA chains that are outliers for geometric or electron-density-fit criteria:

Mol	Type	Chain	Res	Chirality	Geometry	Clashes	Electron density
2	SO4	B	503[B]	-	-	X	-
5	CL	A	508	-	-	X	-
5	CL	A	509	-	-	X	-

2 Entry composition [i](#)

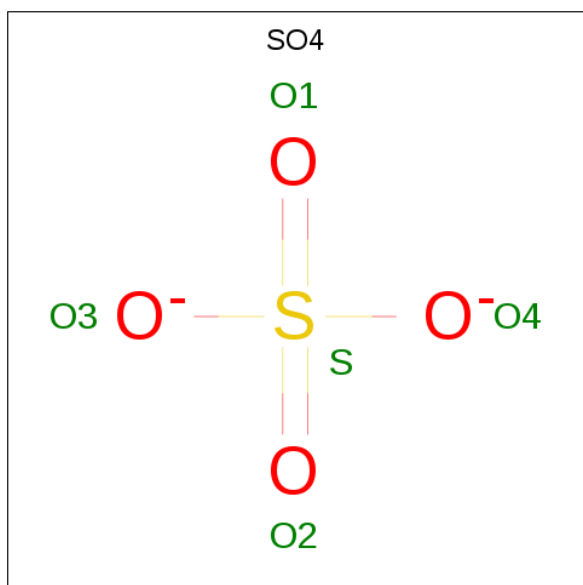
There are 7 unique types of molecules in this entry. The entry contains 23738 atoms, of which 0 are hydrogens and 0 are deuteriums.

In the tables below, the ZeroOcc column contains the number of atoms modelled with zero occupancy, the AltConf column contains the number of residues with at least one atom in alternate conformation and the Trace column contains the number of residues modelled with at most 2 atoms.

- Molecule 1 is a protein called Dihydrolipoyl dehydrogenase.

Mol	Chain	Residues	Atoms					ZeroOcc	AltConf	Trace
1	A	471	Total	C	N	O	S	0	6	0
			3590	2280	618	676	16			
1	B	471	Total	C	N	O	S	0	5	0
			3574	2270	613	675	16			
1	C	469	Total	C	N	O	S	6	3	0
			3546	2252	608	670	16			
1	D	469	Total	C	N	O	S	0	7	0
			3580	2274	612	678	16			
1	E	471	Total	C	N	O	S	0	6	0
			3585	2275	615	678	17			
1	F	469	Total	C	N	O	S	6	3	0
			3542	2250	605	671	16			

- Molecule 2 is SULFATE ION (three-letter code: SO4) (formula: O₄S).



Mol	Chain	Residues	Atoms	ZeroOcc	AltConf
2	A	1	Total O S 5 4 1	0	0
2	A	1	Total O S 5 4 1	0	0
2	A	1	Total O S 5 4 1	0	0
2	A	1	Total O S 5 4 1	0	0
2	A	1	Total O S 5 4 1	0	0
2	A	1	Total O S 5 4 1	0	0
2	B	1	Total O S 5 4 1	0	0
2	B	1	Total O S 5 4 1	0	0
2	B	1	Total O S 10 8 2	0	1
2	B	1	Total O S 5 4 1	0	0
2	B	1	Total O S 5 4 1	0	0
2	B	1	Total O S 5 4 1	0	0
2	B	1	Total O S 5 4 1	0	0
2	B	1	Total O S 5 4 1	0	0
2	C	1	Total O S 5 4 1	0	0
2	C	1	Total O S 5 4 1	0	0
2	C	1	Total O S 5 4 1	0	0
2	D	1	Total O S 5 4 1	0	0
2	D	1	Total O S 5 4 1	0	0
2	D	1	Total O S 5 4 1	0	0
2	D	1	Total O S 10 8 2	0	1
2	D	1	Total O S 5 4 1	0	0
2	D	1	Total O S 5 4 1	0	0

Continued on next page...

Continued from previous page...

Mol	Chain	Residues	Atoms			ZeroOcc	AltConf
2	D	1	Total	O	S	0	0
			5	4	1		
2	E	1	Total	O	S	0	0
			5	4	1		
2	E	1	Total	O	S	0	0
			5	4	1		
2	E	1	Total	O	S	0	1
			10	8	2		
2	E	1	Total	O	S	0	0
			5	4	1		
2	F	1	Total	O	S	0	0
			5	4	1		
2	F	1	Total	O	S	0	0
			5	4	1		

- Molecule 3 is GLYCEROL (three-letter code: GOL) (formula: $C_3H_8O_3$).



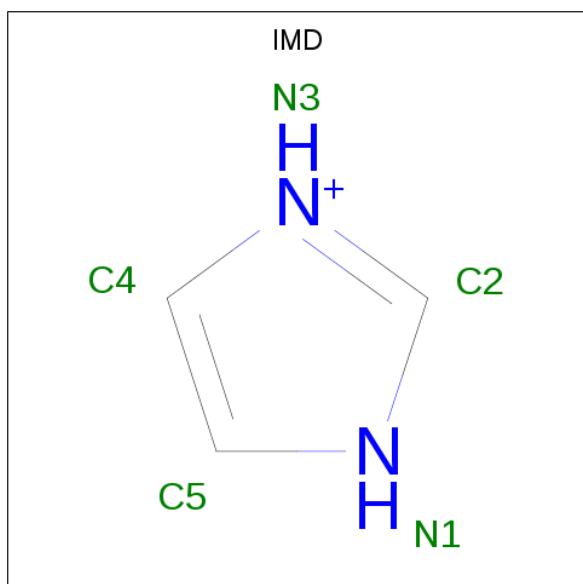
Mol	Chain	Residues	Atoms			ZeroOcc	AltConf
3	A	1	Total	C	O	0	0
			6	3	3		
3	B	1	Total	C	O	0	0
			6	3	3		
3	B	1	Total	C	O	0	0
			6	3	3		
3	C	1	Total	C	O	0	0
			6	3	3		

Continued on next page...

Continued from previous page...

Mol	Chain	Residues	Atoms			ZeroOcc	AltConf
3	D	1	Total	C	O	0	0
			6	3	3		
3	D	1	Total	C	O	0	0
			6	3	3		
3	E	1	Total	C	O	0	0
			6	3	3		
3	E	1	Total	C	O	0	0
			6	3	3		
3	F	1	Total	C	O	0	0
			6	3	3		
3	F	1	Total	C	O	0	0
			6	3	3		

- Molecule 4 is IMIDAZOLE (three-letter code: IMD) (formula: $C_3H_5N_2$).

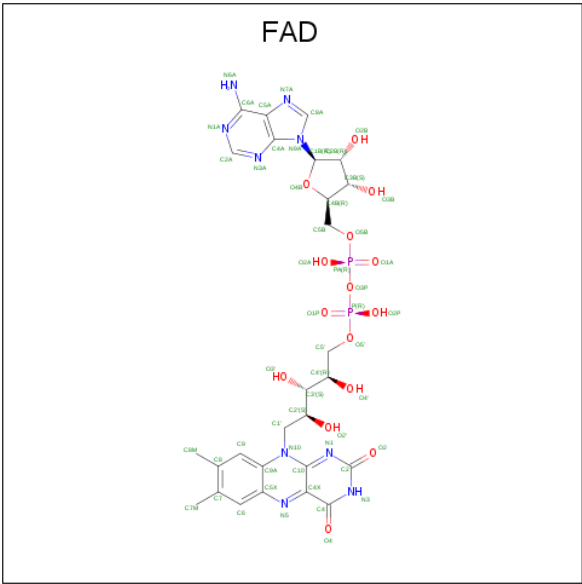


Mol	Chain	Residues	Atoms			ZeroOcc	AltConf
4	A	1	Total	C	N	0	0
			5	3	2		
4	A	1	Total	C	N	0	0
			5	3	2		
4	C	1	Total	C	N	0	0
			5	3	2		
4	E	1	Total	C	N	0	0
			5	3	2		

- Molecule 5 is CHLORIDE ION (three-letter code: CL) (formula: Cl).

Mol	Chain	Residues	Atoms		ZeroOcc	AltConf
5	A	2	Total	Cl	0	0
			2	2		
5	C	4	Total	Cl	0	0
			4	4		
5	F	2	Total	Cl	0	0
			2	2		
5	E	3	Total	Cl	0	0
			3	3		

- Molecule 6 is FLAVIN-ADENINE DINUCLEOTIDE (three-letter code: FAD) (formula: $C_{27}H_{33}N_9O_{15}P_2$).



Mol	Chain	Residues	Atoms					ZeroOcc	AltConf
6	A	1	Total	C	N	O	P	0	0
			53	27	9	15	2		
6	B	1	Total	C	N	O	P	0	0
			53	27	9	15	2		
6	C	1	Total	C	N	O	P	0	0
			53	27	9	15	2		
6	D	1	Total	C	N	O	P	0	0
			53	27	9	15	2		
6	E	1	Total	C	N	O	P	0	0
			53	27	9	15	2		
6	F	1	Total	C	N	O	P	0	0
			53	27	9	15	2		

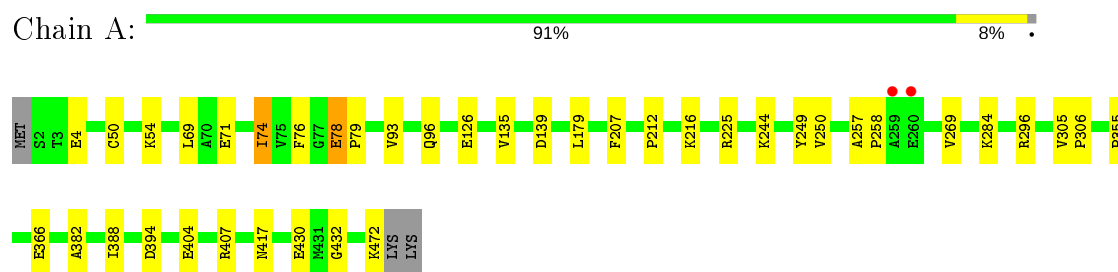
- Molecule 7 is water.

Mol	Chain	Residues	Atoms		ZeroOcc	AltConf
7	A	390	Total 390	O 390	0	0
7	B	354	Total 354	O 354	0	0
7	C	325	Total 325	O 325	0	0
7	D	273	Total 273	O 273	0	0
7	E	224	Total 224	O 224	0	0
7	F	186	Total 186	O 186	0	0

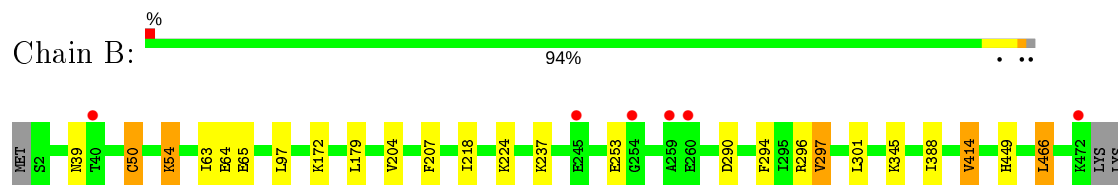
3 Residue-property plots [i](#)

These plots are drawn for all protein, RNA and DNA chains in the entry. The first graphic for a chain summarises the proportions of the various outlier classes displayed in the second graphic. The second graphic shows the sequence view annotated by issues in geometry and electron density. Residues are color-coded according to the number of geometric quality criteria for which they contain at least one outlier: green = 0, yellow = 1, orange = 2 and red = 3 or more. A red dot above a residue indicates a poor fit to the electron density ($RSRZ > 2$). Stretches of 2 or more consecutive residues without any outlier are shown as a green connector. Residues present in the sample, but not in the model, are shown in grey.

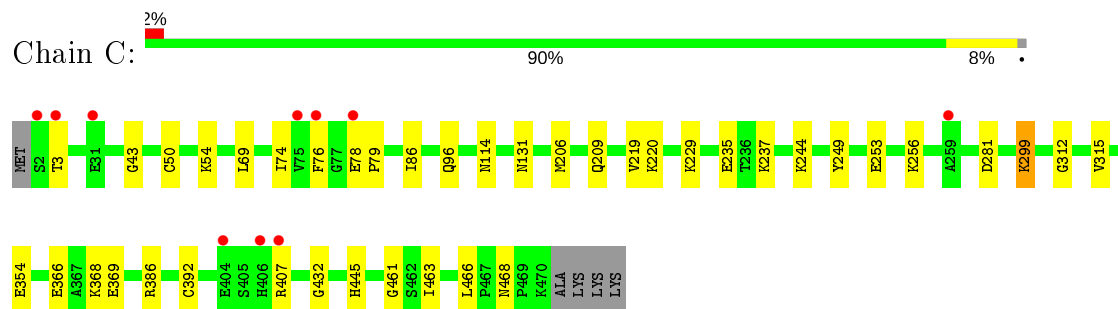
- Molecule 1: Dihydrolipoyl dehydrogenase



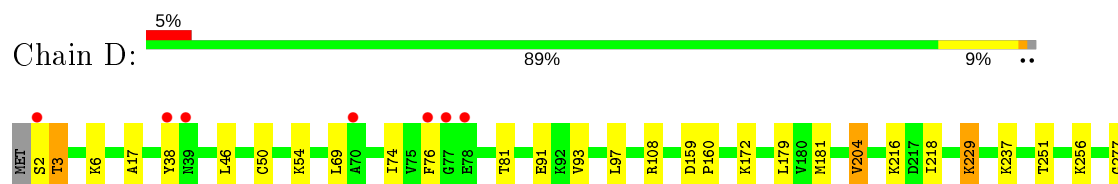
- Molecule 1: Dihydrolipoyl dehydrogenase

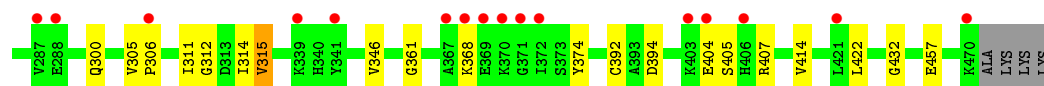


- Molecule 1: Dihydrolipoyl dehydrogenase

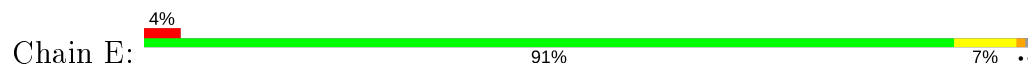


- Molecule 1: Dihydrolipoyl dehydrogenase

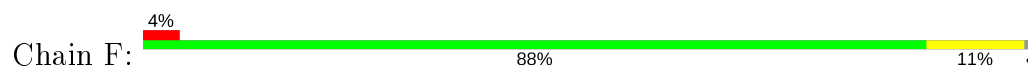




- Molecule 1: Dihydrolipoyl dehydrogenase



- Molecule 1: Dihydrolipoyl dehydrogenase



4 Data and refinement statistics

Property	Value	Source
Space group	P 21 21 21	Depositor
Cell constants a, b, c, α , β , γ	111.68Å 129.32Å 258.34Å 90.00° 90.00° 90.00°	Depositor
Resolution (Å)	42.52 – 2.17 47.65 – 2.17	Depositor EDS
% Data completeness (in resolution range)	99.8 (42.52-2.17) 99.8 (47.65-2.17)	Depositor EDS
R_{merge}	0.06	Depositor
R_{sym}	(Not available)	Depositor
$\langle I/\sigma(I) \rangle$ ¹	2.35 (at 2.16Å)	Xtriage
Refinement program	PHENIX 1.8.2_1309	Depositor
R, R_{free}	0.177 , 0.208 0.177 , 0.208	Depositor DCC
R_{free} test set	9919 reflections (5.00%)	wwPDB-VP
Wilson B-factor (Å ²)	36.8	Xtriage
Anisotropy	0.361	Xtriage
Bulk solvent k_{sol} (e/Å ³), B_{sol} (Å ²)	0.35 , 48.4	EDS
L-test for twinning ²	$\langle L \rangle = 0.47$, $\langle L^2 \rangle = 0.31$	Xtriage
Estimated twinning fraction	No twinning to report.	Xtriage
F_o, F_c correlation	0.96	EDS
Total number of atoms	23738	wwPDB-VP
Average B, all atoms (Å ²)	39.0	wwPDB-VP

Xtriage's analysis on translational NCS is as follows: *The largest off-origin peak in the Patterson function is 2.48% of the height of the origin peak. No significant pseudotranslation is detected.*

¹Intensities estimated from amplitudes.

²Theoretical values of $\langle |L| \rangle$, $\langle L^2 \rangle$ for acentric reflections are 0.5, 0.333 respectively for untwinned datasets, and 0.375, 0.2 for perfectly twinned datasets.

5 Model quality [i](#)

5.1 Standard geometry [i](#)

Bond lengths and bond angles in the following residue types are not validated in this section: GOL, SO4, IMD, FAD, CL

The Z score for a bond length (or angle) is the number of standard deviations the observed value is removed from the expected value. A bond length (or angle) with $|Z| > 5$ is considered an outlier worth inspection. RMSZ is the root-mean-square of all Z scores of the bond lengths (or angles).

Mol	Chain	Bond lengths		Bond angles	
		RMSZ	$\# Z > 5$	RMSZ	$\# Z > 5$
1	A	0.34	0/3656	0.55	0/4947
1	B	0.33	0/3637	0.55	1/4924 (0.0%)
1	C	0.33	0/3609	0.53	0/4886
1	D	0.31	0/3644	0.52	0/4935
1	E	0.32	0/3648	0.54	1/4937 (0.0%)
1	F	0.31	0/3605	0.53	0/4882
All	All	0.32	0/21799	0.54	2/29511 (0.0%)

There are no bond length outliers.

All (2) bond angle outliers are listed below:

Mol	Chain	Res	Type	Atoms	Z	Observed(°)	Ideal(°)
1	B	466	LEU	CA-CB-CG	5.72	128.47	115.30
1	E	38	TYR	CA-CB-CG	-5.19	103.54	113.40

There are no chirality outliers.

There are no planarity outliers.

5.2 Too-close contacts [i](#)

In the following table, the Non-H and H(model) columns list the number of non-hydrogen atoms and hydrogen atoms in the chain respectively. The H(added) column lists the number of hydrogen atoms added and optimized by MolProbity. The Clashes column lists the number of clashes within the asymmetric unit, whereas Symm-Clashes lists symmetry related clashes.

Mol	Chain	Non-H	H(model)	H(added)	Clashes	Symm-Clashes
1	A	3590	0	3658	34	0
1	B	3574	0	3634	19	1
1	C	3546	0	3602	34	0

Continued on next page...

Continued from previous page...

Mol	Chain	Non-H	H(model)	H(added)	Clashes	Symm-Clashes
1	D	3580	0	3627	33	1
1	E	3585	0	3638	28	0
1	F	3542	0	3596	35	0
2	A	30	0	0	1	0
2	B	40	0	0	5	0
2	C	15	0	0	0	0
2	D	40	0	0	0	0
2	E	25	0	0	2	0
2	F	10	0	0	0	0
3	A	6	0	8	0	0
3	B	12	0	16	0	0
3	C	6	0	8	1	0
3	D	12	0	16	2	0
3	E	12	0	16	1	0
3	F	12	0	16	0	0
4	A	10	0	10	2	0
4	C	5	0	5	1	0
4	E	5	0	5	0	0
5	A	2	0	0	4	0
5	C	4	0	0	3	0
5	E	3	0	0	1	0
5	F	2	0	0	0	0
6	A	53	0	31	2	0
6	B	53	0	31	1	0
6	C	53	0	31	0	0
6	D	53	0	31	0	0
6	E	53	0	31	1	0
6	F	53	0	31	1	0
7	A	390	0	0	15	1
7	B	354	0	0	8	0
7	C	325	0	0	17	1
7	D	273	0	0	11	0
7	E	224	0	0	9	0
7	F	186	0	0	10	0
All	All	23738	0	22041	189	2

The all-atom clashscore is defined as the number of clashes found per 1000 atoms (including hydrogen atoms). The all-atom clashscore for this structure is 4.

All (189) close contacts within the same asymmetric unit are listed below, sorted by their clash magnitude.

Atom-1	Atom-2	Interatomic distance (Å)	Clash overlap (Å)
5:A:509:CL:CL	7:A:937:HOH:O	1.95	1.18
5:A:508:CL:CL	7:A:952:HOH:O	2.00	1.14
5:A:509:CL:CL	7:A:938:HOH:O	2.16	1.00
1:C:253:GLU:OE1	7:C:893:HOH:O	1.82	0.97
1:E:233:MET:HB3	1:E:256:LYS:HZ2	1.29	0.94
5:C:505:CL:CL	7:C:896:HOH:O	2.30	0.86
1:C:249:TYR:OH	7:C:876:HOH:O	1.93	0.86
5:A:508:CL:CL	7:A:936:HOH:O	2.36	0.80
1:D:76:PHE:O	7:D:803:HOH:O	1.99	0.80
1:D:457:GLU:OE1	7:D:688:HOH:O	1.99	0.80
2:E:503[B]:SO4:O2	7:E:732:HOH:O	1.99	0.80
1:D:368:LYS:NZ	1:D:374:TYR:OH	2.15	0.79
1:F:245:GLU:O	7:F:654:HOH:O	1.99	0.79
1:B:218:ILE:HG23	1:B:414:VAL:HG22	1.63	0.79
5:E:509:CL:CL	7:E:799:HOH:O	2.37	0.79
1:B:64:GLU:OE1	7:B:850:HOH:O	2.00	0.79
1:F:434:ASP:OD2	7:F:782:HOH:O	2.03	0.77
5:C:506:CL:CL	7:C:887:HOH:O	2.40	0.77
5:C:507:CL:CL	7:C:923:HOH:O	2.40	0.77
1:F:119:PHE:O	7:F:755:HOH:O	2.03	0.77
1:E:236:THR:HG22	1:E:254:GLY:HA3	1.68	0.76
1:A:407:ARG:NH1	1:C:369:GLU:HB2	2.01	0.75
1:C:299:LYS:HD2	1:C:299:LYS:H	1.53	0.73
1:E:71:GLU:OE2	7:E:709:HOH:O	2.06	0.73
2:B:503[B]:SO4:O1	7:B:918:HOH:O	2.05	0.72
1:D:300:GLN:OE1	7:D:687:HOH:O	2.08	0.72
1:B:65:GLU:OE1	7:B:835:HOH:O	2.07	0.71
1:F:89:TRP:NE1	7:F:663:HOH:O	2.01	0.71
1:A:296:ARG:NH2	2:A:511:SO4:O2	2.22	0.70
1:F:392:CYS:HB2	7:F:601:HOH:O	1.92	0.70
1:F:354:GLU:OE2	7:F:706:HOH:O	2.09	0.69
1:A:430:GLU:OE1	7:A:783:HOH:O	2.10	0.69
1:A:407:ARG:HH12	1:C:369:GLU:HB2	1.57	0.68
1:A:225:ARG:NH2	1:A:394:ASP:OD2	2.25	0.68
1:F:158:GLU:HG2	7:F:767:HOH:O	1.94	0.68
1:E:210:VAL:HG13	1:E:211:ILE:HG13	1.75	0.67
1:C:76:PHE:O	7:C:742:HOH:O	2.14	0.67
1:E:236:THR:HG22	1:E:254:GLY:CA	2.26	0.66
1:A:366:GLU:HA	1:C:206:MET:HE1	1.78	0.66
1:A:71:GLU:OE2	7:A:941:HOH:O	2.13	0.65
1:C:220:LYS:NZ	7:C:916:HOH:O	2.29	0.65
1:C:386[B]:ARG:NH2	3:E:504:GOL:O1	2.29	0.65

Continued on next page...

Continued from previous page...

Atom-1	Atom-2	Interatomic distance (Å)	Clash overlap (Å)
1:E:236:THR:OG1	1:E:256:LYS:NZ	2.17	0.64
2:B:507:SO4:O3	7:B:903:HOH:O	2.14	0.63
2:E:502:SO4:O1	7:E:717:HOH:O	2.14	0.63
1:A:407:ARG:NH2	1:C:369:GLU:OE1	2.25	0.62
1:E:392:CYS:HB2	7:E:610:HOH:O	1.98	0.62
1:F:260:GLU:OE2	1:F:262:GLN:NE2	2.33	0.61
1:A:126:GLU:OE2	7:A:759:HOH:O	2.15	0.61
1:D:457:GLU:OE2	7:D:756:HOH:O	2.16	0.61
1:B:253:GLU:OE2	7:B:861:HOH:O	2.17	0.60
1:D:69:LEU:HB3	1:D:74:ILE:HB	1.83	0.60
1:B:179:LEU:HD11	1:B:204[A]:VAL:HG23	1.83	0.59
1:D:407:ARG:NH1	1:D:432:GLY:O	2.34	0.59
1:C:131:ASN:ND2	7:C:818:HOH:O	2.33	0.59
1:F:87:ARG:HD2	7:F:776:HOH:O	2.03	0.58
1:C:244:LYS:NZ	7:C:869:HOH:O	2.35	0.58
1:D:216:LYS:NZ	7:D:836:HOH:O	2.37	0.58
1:A:4:GLU:HG2	1:A:135:VAL:HB	1.85	0.57
1:A:139:ASP:OD1	7:A:940:HOH:O	2.18	0.57
1:C:86:ILE:HD11	1:E:74:ILE:HD11	1.85	0.57
1:F:405:SER:HB2	1:F:407:ARG:NH1	2.20	0.56
1:E:287:VAL:O	7:E:784:HOH:O	2.18	0.56
1:C:96:GLN:NE2	7:C:733:HOH:O	2.38	0.56
1:A:76:PHE:O	7:A:762:HOH:O	2.18	0.56
1:A:78:GLU:HG2	1:A:79:PRO:HD2	1.88	0.55
1:A:74:ILE:HD12	1:B:63:ILE:HD11	1.88	0.55
1:A:216[A]:LYS:NZ	7:A:872:HOH:O	2.07	0.55
1:D:172:LYS:HD3	7:D:777:HOH:O	2.07	0.54
1:E:244:LYS:HD2	1:E:249:TYR:CE1	2.43	0.54
1:B:207:PHE:CZ	1:D:251[A]:THR:HG23	2.42	0.54
1:D:6:LYS:NZ	7:D:824:HOH:O	2.14	0.54
1:D:2:SER:OG	1:D:3:THR:N	2.41	0.53
1:A:93:VAL:HB	1:B:388:ILE:HG22	1.90	0.53
1:E:394[B]:ASP:OD1	7:E:800:HOH:O	2.19	0.53
1:F:405:SER:HB2	1:F:407:ARG:HH11	1.74	0.53
1:A:388:ILE:HD12	1:B:97:LEU:HD21	1.91	0.53
1:C:366:GLU:O	1:C:369:GLU:HG2	2.08	0.53
1:C:407:ARG:NH1	1:C:432:GLY:O	2.42	0.52
1:E:208:ASP:HA	1:E:235:GLU:HG3	1.91	0.52
1:E:78:GLU:OE1	1:E:79:PRO:HD2	2.10	0.52
1:F:96:GLN:NE2	7:F:644:HOH:O	2.40	0.52
1:E:224:LYS:NZ	7:E:792:HOH:O	2.42	0.52

Continued on next page...

Continued from previous page...

Atom-1	Atom-2	Interatomic distance (Å)	Clash overlap (Å)
1:E:234:LEU:N	1:E:256:LYS:HD2	2.25	0.51
1:A:96:GLN:NE2	7:A:741:HOH:O	2.42	0.51
1:B:297:VAL:HG13	1:B:301:LEU:HA	1.93	0.51
1:D:93:VAL:HB	1:F:388:ILE:HG22	1.93	0.51
1:A:407:ARG:CZ	1:C:369:GLU:HB2	2.41	0.51
1:D:218:ILE:HG23	1:D:414:VAL:HB	1.93	0.51
1:F:240:ALA:HB3	1:F:251:THR:HB	1.94	0.50
1:F:126:GLU:CD	1:F:133:LYS:HD2	2.32	0.50
4:A:507:IMD:HN1	1:C:237:LYS:HA	1.77	0.50
1:E:233:MET:CB	1:E:256:LYS:HZ2	2.15	0.50
1:F:346:VAL:HB	1:F:360:VAL:HG22	1.94	0.50
1:C:43:GLY:HA2	4:C:504:IMD:H4	1.95	0.49
1:D:392:CYS:HB2	7:D:611:HOH:O	2.12	0.49
1:E:225:ARG:NH1	1:E:394[B]:ASP:OD1	2.46	0.49
1:F:244:LYS:HD2	1:F:249:TYR:CD1	2.48	0.49
1:F:5:ILE:HD11	1:F:136:ILE:HG12	1.95	0.49
1:C:445:HIS:O	7:C:703:HOH:O	2.20	0.49
1:F:260:GLU:H	1:F:260:GLU:CD	2.17	0.48
1:A:207:PHE:CD2	1:A:212:PRO:HB3	2.48	0.48
1:C:209:GLN:HG2	1:C:219:VAL:HG11	1.95	0.48
1:A:225:ARG:HG2	1:A:355:PRO:HD3	1.95	0.48
1:C:392:CYS:HB2	7:C:608:HOH:O	2.13	0.48
1:F:4:GLU:HG2	1:F:135:VAL:HB	1.95	0.47
1:D:181:MET:HA	1:D:204:VAL:HG23	1.96	0.47
1:A:284:LYS:NZ	7:A:968:HOH:O	2.12	0.47
1:D:346:VAL:HG12	1:D:361:GLY:HA2	1.96	0.47
1:C:281:ASP:OD2	7:C:682:HOH:O	2.21	0.47
1:C:354:GLU:HG2	3:C:503:GOL:O1	2.14	0.47
1:A:382:ALA:O	1:A:388:ILE:HD11	2.15	0.46
1:C:256:LYS:HG3	7:C:684:HOH:O	2.15	0.46
1:F:206:MET:O	1:F:235:GLU:HA	2.16	0.46
1:C:78:GLU:OE1	1:C:79:PRO:HD2	2.16	0.46
1:D:179:LEU:HD11	1:D:204:VAL:HG22	1.98	0.46
1:E:132:GLY:O	7:E:690:HOH:O	2.21	0.46
1:B:297:VAL:CG1	1:B:301:LEU:HA	2.46	0.46
2:B:503[A]:SO4:O2	7:B:719:HOH:O	2.11	0.46
1:F:368:LYS:HE3	1:F:374:TYR:OH	2.15	0.46
1:E:240:ALA:HB3	1:E:251:THR:OG1	2.15	0.46
1:B:296:ARG:HD2	7:D:863:HOH:O	2.17	0.45
1:C:220:LYS:CE	7:C:916:HOH:O	2.63	0.45
1:F:346:VAL:HG12	1:F:361:GLY:HA2	1.98	0.45

Continued on next page...

Continued from previous page...

Atom-1	Atom-2	Interatomic distance (Å)	Clash overlap (Å)
1:F:46:LEU:HD11	1:F:97:LEU:HB2	1.98	0.45
1:D:394:ASP:OD1	1:D:394:ASP:N	2.45	0.45
1:A:225:ARG:HD3	1:A:225:ARG:HA	1.85	0.45
1:A:269:VAL:HB	7:A:734:HOH:O	2.17	0.45
1:F:217:ASP:N	1:F:217:ASP:OD1	2.51	0.44
1:E:16:PRO:HA	1:E:19:TYR:CE2	2.52	0.44
6:A:512:FAD:H1'1	6:A:512:FAD:H9	1.72	0.44
1:A:244:LYS:HD2	1:A:249:TYR:CD1	2.53	0.44
1:E:312:GLY:O	1:E:315:VAL:HG22	2.18	0.44
1:A:472:LYS:HD2	1:A:472:LYS:HA	1.72	0.43
1:B:237:LYS:HE2	1:B:237:LYS:HB3	1.82	0.43
6:F:501:FAD:H1'1	6:F:501:FAD:H9	1.68	0.43
1:A:404:GLU:CD	7:A:948:HOH:O	2.57	0.43
1:C:237:LYS:NZ	7:C:893:HOH:O	2.24	0.43
1:D:312:GLY:O	1:D:315[B]:VAL:HG22	2.18	0.43
1:D:38[A]:TYR:HE2	3:D:507:GOL:H11	1.82	0.43
1:F:468:ASN:O	1:F:470:LYS:N	2.52	0.43
1:D:229:LYS:HE2	1:D:229:LYS:HB3	1.71	0.43
1:B:449:HIS:HB2	7:B:664:HOH:O	2.18	0.43
1:F:469:PRO:O	7:F:669:HOH:O	2.21	0.43
6:B:510:FAD:H9	6:B:510:FAD:H1'1	1.70	0.43
1:D:404:GLU:HG3	1:D:405:SER:N	2.34	0.43
1:A:257:ALA:HA	1:A:258:PRO:HD3	1.91	0.43
1:A:179:LEU:HD22	1:A:250[A]:VAL:HG21	2.01	0.43
1:D:159:ASP:HA	1:D:160:PRO:HD3	1.89	0.42
1:E:38:TYR:HD1	1:E:38:TYR:HA	1.61	0.42
1:F:9:VAL:HG21	1:F:30:LEU:HD23	2.01	0.42
1:F:226:ILE:HG12	1:F:230:PHE:CD2	2.54	0.42
1:C:69:LEU:HB3	1:C:74:ILE:HB	2.01	0.42
1:E:251:THR:HG22	1:E:261:PRO:HG3	2.00	0.42
1:D:108:ARG:HG3	7:D:861:HOH:O	2.19	0.42
1:F:260:GLU:OE1	1:F:260:GLU:N	2.48	0.42
1:A:69:LEU:HB3	1:A:74:ILE:HB	2.02	0.42
1:C:463:ILE:HG12	1:C:466:LEU:HB2	2.01	0.42
1:D:17:ALA:HB1	1:D:311:ILE:HD12	2.02	0.42
1:E:236:THR:HG23	1:E:256:LYS:CE	2.49	0.42
1:F:104:MET:HE2	1:F:108:ARG:NH1	2.35	0.42
1:D:422:LEU:HA	1:D:422:LEU:HD23	1.89	0.42
1:E:69:LEU:HB3	1:E:74:ILE:HB	2.01	0.42
1:F:152:LEU:HA	1:F:153:PRO:HD3	1.79	0.42
1:B:290:ASP:OD1	1:B:294:PHE:N	2.48	0.42

Continued on next page...

Continued from previous page...

Atom-1	Atom-2	Interatomic distance (Å)	Clash overlap (Å)
1:D:305:VAL:HA	1:D:306:PRO:HD3	1.84	0.42
6:E:511:FAD:H9	6:E:511:FAD:H1'1	1.71	0.42
1:B:345:LYS:HE3	1:B:345:LYS:HB2	1.90	0.42
1:A:417:ASN:ND2	2:B:503[B]:SO4:O4	2.51	0.41
1:D:46:LEU:HD11	1:D:97:LEU:HB2	2.02	0.41
1:D:81:THR:HG22	1:F:74:ILE:HG23	2.02	0.41
1:D:38[A]:TYR:HD2	3:D:507:GOL:H31	1.85	0.41
1:C:312:GLY:O	1:C:315:VAL:HG22	2.21	0.41
1:E:236:THR:HG21	1:E:257:ALA:HB2	2.01	0.41
4:A:506:IMD:H2	6:A:512:FAD:O3B	2.20	0.41
1:C:461:GLY:O	1:C:468:ASN:ND2	2.42	0.41
1:F:104:MET:HE2	1:F:104:MET:HB3	1.83	0.41
1:B:224:LYS:HD3	7:B:781:HOH:O	2.19	0.41
1:E:386[B]:ARG:HD2	1:E:446:PRO:O	2.21	0.41
1:B:39:ASN:HB2	2:B:508:SO4:O3	2.20	0.41
1:B:50[B]:CYS:O	1:B:54:LYS:HE2	2.21	0.41
1:E:206:MET:O	1:E:235:GLU:HA	2.21	0.41
1:C:114:ASN:HB3	7:C:753:HOH:O	2.21	0.40
1:A:432:GLY:HA2	7:A:753:HOH:O	2.21	0.40
1:D:277:GLY:HA2	1:D:314:ILE:HD11	2.03	0.40
1:D:91:GLU:HG2	7:D:842:HOH:O	2.20	0.40
1:F:52:PRO:HB3	1:F:94:ILE:HD11	2.03	0.40
1:A:305:VAL:HA	1:A:306:PRO:HD3	1.86	0.40
1:C:206:MET:O	1:C:235:GLU:HA	2.20	0.40

All (2) symmetry-related close contacts are listed below. The label for Atom-2 includes the symmetry operator and encoded unit-cell translations to be applied.

Atom-1	Atom-2	Interatomic distance (Å)	Clash overlap (Å)
1:D:38[A]:TYR:OH	7:A:902:HOH:O[4_577]	1.68	0.52
1:B:172:LYS:NZ	7:C:837:HOH:O[4_567]	2.14	0.06

5.3 Torsion angles ⓘ

5.3.1 Protein backbone ⓘ

In the following table, the Percentiles column shows the percent Ramachandran outliers of the chain as a percentile score with respect to all X-ray entries followed by that with respect to entries of similar resolution.

The Analysed column shows the number of residues for which the backbone conformation was analysed, and the total number of residues.

Mol	Chain	Analysed	Favoured	Allowed	Outliers	Percentiles	
1	A	476/474 (100%)	467 (98%)	9 (2%)	0	100	100
1	B	474/474 (100%)	466 (98%)	8 (2%)	0	100	100
1	C	470/474 (99%)	460 (98%)	10 (2%)	0	100	100
1	D	474/474 (100%)	463 (98%)	10 (2%)	1 (0%)	47	52
1	E	475/474 (100%)	466 (98%)	9 (2%)	0	100	100
1	F	470/474 (99%)	459 (98%)	11 (2%)	0	100	100
All	All	2839/2844 (100%)	2781 (98%)	57 (2%)	1 (0%)	100	100

All (1) Ramachandran outliers are listed below:

Mol	Chain	Res	Type
1	D	3	THR

5.3.2 Protein sidechains ⓘ

In the following table, the Percentiles column shows the percent sidechain outliers of the chain as a percentile score with respect to all X-ray entries followed by that with respect to entries of similar resolution.

The Analysed column shows the number of residues for which the sidechain conformation was analysed, and the total number of residues.

Mol	Chain	Analysed	Rotameric	Outliers	Percentiles	
1	A	377/373 (101%)	372 (99%)	5 (1%)	69	79
1	B	375/373 (100%)	369 (98%)	6 (2%)	62	74
1	C	372/373 (100%)	365 (98%)	7 (2%)	57	68
1	D	376/373 (101%)	367 (98%)	9 (2%)	49	59
1	E	376/373 (101%)	364 (97%)	12 (3%)	39	47
1	F	372/373 (100%)	364 (98%)	8 (2%)	52	62
All	All	2248/2238 (100%)	2201 (98%)	47 (2%)	59	64

All (47) residues with a non-rotameric sidechain are listed below:

Mol	Chain	Res	Type
1	A	50[A]	CYS

Continued on next page...

Continued from previous page...

Mol	Chain	Res	Type
1	A	50[B]	CYS
1	A	54	LYS
1	A	74	ILE
1	A	78	GLU
1	B	50[A]	CYS
1	B	50[B]	CYS
1	B	54	LYS
1	B	297	VAL
1	B	414	VAL
1	B	466	LEU
1	C	3	THR
1	C	50[A]	CYS
1	C	50[B]	CYS
1	C	54	LYS
1	C	229	LYS
1	C	299	LYS
1	C	368	LYS
1	D	50[A]	CYS
1	D	50[B]	CYS
1	D	54	LYS
1	D	204	VAL
1	D	229	LYS
1	D	237	LYS
1	D	256	LYS
1	D	315[A]	VAL
1	D	315[B]	VAL
1	E	3	THR
1	E	6	LYS
1	E	50[A]	CYS
1	E	50[B]	CYS
1	E	54	LYS
1	E	210	VAL
1	E	225	ARG
1	E	256	LYS
1	E	291	ASP
1	E	299	LYS
1	E	394[A]	ASP
1	E	394[B]	ASP
1	F	24	ARG
1	F	30	LEU
1	F	50[A]	CYS
1	F	50[B]	CYS

Continued on next page...

Continued from previous page...

Mol	Chain	Res	Type
1	F	54	LYS
1	F	226	ILE
1	F	315	VAL
1	F	448	LEU

Some sidechains can be flipped to improve hydrogen bonding and reduce clashes. All (2) such sidechains are listed below:

Mol	Chain	Res	Type
1	C	317	GLN
1	F	195	HIS

5.3.3 RNA [i](#)

There are no RNA molecules in this entry.

5.4 Non-standard residues in protein, DNA, RNA chains [i](#)

There are no non-standard protein/DNA/RNA residues in this entry.

5.5 Carbohydrates [i](#)

There are no carbohydrates in this entry.

5.6 Ligand geometry [i](#)

Of 63 ligands modelled in this entry, 11 are monoatomic - leaving 52 for Mogul analysis.

In the following table, the Counts columns list the number of bonds (or angles) for which Mogul statistics could be retrieved, the number of bonds (or angles) that are observed in the model and the number of bonds (or angles) that are defined in the Chemical Component Dictionary. The Link column lists molecule types, if any, to which the group is linked. The Z score for a bond length (or angle) is the number of standard deviations the observed value is removed from the expected value. A bond length (or angle) with $|Z| > 2$ is considered an outlier worth inspection. RMSZ is the root-mean-square of all Z scores of the bond lengths (or angles).

Mol	Type	Chain	Res	Link	Bond lengths			Bond angles		
					Counts	RMSZ	$\# Z > 2$	Counts	RMSZ	$\# Z > 2$
3	GOL	F	504	-	5,5,5	0.34	0	5,5,5	0.40	0
2	SO4	A	511	-	4,4,4	0.14	0	6,6,6	0.25	0
2	SO4	B	507	-	4,4,4	0.14	0	6,6,6	0.08	0

Mol	Type	Chain	Res	Link	Bond lengths			Bond angles		
					Counts	RMSZ	# Z > 2	Counts	RMSZ	# Z > 2
2	SO4	A	502	-	4,4,4	0.15	0	6,6,6	0.10	0
4	IMD	A	507	-	3,5,5	0.42	0	4,5,5	0.58	0
2	SO4	C	501	-	4,4,4	0.15	0	6,6,6	0.12	0
2	SO4	B	501	-	4,4,4	0.17	0	6,6,6	0.13	0
2	SO4	B	502	-	4,4,4	0.14	0	6,6,6	0.11	0
2	SO4	D	504[A]	-	4,4,4	0.15	0	6,6,6	0.11	0
2	SO4	F	507	-	4,4,4	0.15	0	6,6,6	0.06	0
2	SO4	D	504[B]	-	4,4,4	0.14	0	6,6,6	0.09	0
6	FAD	D	510	-	51,58,58	0.95	2 (3%)	60,89,89	1.54	8 (13%)
2	SO4	A	504	-	4,4,4	0.13	0	6,6,6	0.08	0
6	FAD	B	510	-	51,58,58	0.94	2 (3%)	60,89,89	1.56	11 (18%)
3	GOL	E	504	-	5,5,5	0.40	0	5,5,5	0.37	0
6	FAD	F	501	-	51,58,58	0.90	1 (1%)	60,89,89	1.54	8 (13%)
2	SO4	D	505	-	4,4,4	0.15	0	6,6,6	0.05	0
3	GOL	C	503	-	5,5,5	0.37	0	5,5,5	0.46	0
3	GOL	D	507	-	5,5,5	0.35	0	5,5,5	0.32	0
6	FAD	E	511	-	51,58,58	0.91	1 (1%)	60,89,89	1.56	8 (13%)
6	FAD	C	510	-	51,58,58	0.92	2 (3%)	60,89,89	1.53	7 (11%)
3	GOL	E	505	-	5,5,5	0.39	0	5,5,5	0.40	0
2	SO4	D	508	-	4,4,4	0.15	0	6,6,6	0.05	0
2	SO4	B	508	-	4,4,4	0.16	0	6,6,6	0.07	0
3	GOL	B	505	-	5,5,5	0.37	0	5,5,5	0.33	0
2	SO4	B	504	-	4,4,4	0.15	0	6,6,6	0.05	0
4	IMD	C	504	-	3,5,5	0.40	0	4,5,5	0.60	0
2	SO4	B	503[A]	-	4,4,4	0.15	0	6,6,6	0.15	0
2	SO4	E	503[B]	-	4,4,4	0.14	0	6,6,6	0.07	0
2	SO4	B	503[B]	-	4,4,4	0.15	0	6,6,6	0.07	0
2	SO4	A	501	-	4,4,4	0.14	0	6,6,6	0.12	0
3	GOL	F	503	-	5,5,5	0.39	0	5,5,5	0.42	0
2	SO4	C	509	-	4,4,4	0.13	0	6,6,6	0.08	0
4	IMD	E	506	-	3,5,5	0.40	0	4,5,5	0.60	0
2	SO4	D	503	-	4,4,4	0.20	0	6,6,6	0.16	0
2	SO4	A	503	-	4,4,4	0.13	0	6,6,6	0.12	0
3	GOL	A	505	-	5,5,5	0.42	0	5,5,5	0.25	0
3	GOL	D	506	-	5,5,5	0.41	0	5,5,5	0.18	0
2	SO4	C	502	-	4,4,4	0.17	0	6,6,6	0.19	0
2	SO4	E	502	-	4,4,4	0.12	0	6,6,6	0.11	0
2	SO4	E	503[A]	-	4,4,4	0.17	0	6,6,6	0.07	0
3	GOL	B	506	-	5,5,5	0.39	0	5,5,5	0.21	0
2	SO4	B	509	-	4,4,4	0.15	0	6,6,6	0.05	0
6	FAD	A	512	-	51,58,58	0.97	2 (3%)	60,89,89	1.47	6 (10%)
2	SO4	E	501	-	4,4,4	0.14	0	6,6,6	0.14	0

Mol	Type	Chain	Res	Link	Bond lengths			Bond angles		
					Counts	RMSZ	# Z > 2	Counts	RMSZ	# Z > 2
2	SO4	D	509	-	4,4,4	0.14	0	6,6,6	0.06	0
2	SO4	D	502	-	4,4,4	0.15	0	6,6,6	0.07	0
2	SO4	F	502	-	4,4,4	0.14	0	6,6,6	0.08	0
4	IMD	A	506	-	3,5,5	0.38	0	4,5,5	0.63	0
2	SO4	D	501	-	4,4,4	0.14	0	6,6,6	0.07	0
2	SO4	A	510	-	4,4,4	0.12	0	6,6,6	0.09	0
2	SO4	E	510	-	4,4,4	0.16	0	6,6,6	0.06	0

In the following table, the Chirals column lists the number of chiral outliers, the number of chiral centers analysed, the number of these observed in the model and the number defined in the Chemical Component Dictionary. Similar counts are reported in the Torsion and Rings columns. '-' means no outliers of that kind were identified.

Mol	Type	Chain	Res	Link	Chirals	Torsions	Rings
3	GOL	E	505	-	-	2/4/4/4	-
6	FAD	D	510	-	-	2/30/50/50	0/6/6/6
3	GOL	A	505	-	-	2/4/4/4	-
3	GOL	B	505	-	-	2/4/4/4	-
3	GOL	D	506	-	-	2/4/4/4	-
4	IMD	C	504	-	-	-	0/1/1/1
3	GOL	E	504	-	-	2/4/4/4	-
3	GOL	B	506	-	-	4/4/4/4	-
6	FAD	F	501	-	-	1/30/50/50	0/6/6/6
6	FAD	A	512	-	-	1/30/50/50	0/6/6/6
3	GOL	C	503	-	-	2/4/4/4	-
3	GOL	D	507	-	-	3/4/4/4	-
4	IMD	A	507	-	-	-	0/1/1/1
3	GOL	F	504	-	-	2/4/4/4	-
3	GOL	F	503	-	-	2/4/4/4	-
4	IMD	A	506	-	-	-	0/1/1/1
6	FAD	E	511	-	-	2/30/50/50	0/6/6/6
6	FAD	B	510	-	-	2/30/50/50	0/6/6/6
4	IMD	E	506	-	-	-	0/1/1/1
6	FAD	C	510	-	-	2/30/50/50	0/6/6/6

All (10) bond length outliers are listed below:

Mol	Chain	Res	Type	Atoms	Z	Observed(Å)	Ideal(Å)
6	D	510	FAD	C9A-N10	-2.61	1.35	1.38

Continued on next page...

Continued from previous page...

Mol	Chain	Res	Type	Atoms	Z	Observed(Å)	Ideal(Å)
6	B	510	FAD	C9A-N10	-2.59	1.35	1.38
6	E	511	FAD	C9A-N10	-2.52	1.35	1.38
6	F	501	FAD	C9A-N10	-2.52	1.35	1.38
6	C	510	FAD	C9A-N10	-2.51	1.35	1.38
6	A	512	FAD	C9A-N10	-2.47	1.35	1.38
6	A	512	FAD	O4B-C1B	2.46	1.44	1.41
6	C	510	FAD	C10-N1	2.15	1.36	1.33
6	D	510	FAD	C10-N1	2.12	1.36	1.33
6	B	510	FAD	O4B-C1B	2.04	1.43	1.41

All (48) bond angle outliers are listed below:

Mol	Chain	Res	Type	Atoms	Z	Observed(°)	Ideal(°)
6	D	510	FAD	C4-N3-C2	6.28	120.45	115.14
6	C	510	FAD	C4-N3-C2	6.21	120.39	115.14
6	E	511	FAD	C4-N3-C2	6.19	120.37	115.14
6	F	501	FAD	C4-N3-C2	5.83	120.06	115.14
6	B	510	FAD	C4-N3-C2	5.69	119.94	115.14
6	A	512	FAD	C4-N3-C2	5.41	119.71	115.14
6	B	510	FAD	N3A-C2A-N1A	-4.89	121.04	128.68
6	D	510	FAD	N3A-C2A-N1A	-4.81	121.16	128.68
6	F	501	FAD	N3A-C2A-N1A	-4.70	121.33	128.68
6	C	510	FAD	N3A-C2A-N1A	-4.65	121.40	128.68
6	E	511	FAD	N3A-C2A-N1A	-4.65	121.41	128.68
6	A	512	FAD	N3A-C2A-N1A	-4.64	121.42	128.68
6	F	501	FAD	C5X-C9A-N10	3.78	120.45	117.72
6	B	510	FAD	C4X-N5-C5X	3.55	120.32	116.77
6	E	511	FAD	C5X-C9A-N10	3.50	120.25	117.72
6	B	510	FAD	C5X-C9A-N10	3.37	120.16	117.72
6	A	512	FAD	C4X-N5-C5X	3.34	120.11	116.77
6	C	510	FAD	C5X-C9A-N10	3.32	120.12	117.72
6	A	512	FAD	C5X-C9A-N10	3.30	120.11	117.72
6	F	501	FAD	C1'-N10-C10	3.01	121.11	118.41
6	D	510	FAD	C4X-N5-C5X	3.00	119.77	116.77
6	F	501	FAD	C4X-N5-C5X	2.89	119.66	116.77
6	F	501	FAD	P-O3P-PA	-2.87	122.96	132.83
6	C	510	FAD	C1'-N10-C10	2.82	120.93	118.41
6	C	510	FAD	C4X-N5-C5X	2.80	119.57	116.77
6	E	511	FAD	C4X-N5-C5X	2.76	119.53	116.77
6	D	510	FAD	C5X-C9A-N10	2.62	119.61	117.72
6	E	511	FAD	P-O3P-PA	-2.61	123.87	132.83
6	B	510	FAD	C1'-N10-C10	2.55	120.69	118.41

Continued on next page...

Continued from previous page...

Mol	Chain	Res	Type	Atoms	Z	Observed(°)	Ideal(°)
6	D	510	FAD	C4X-C4-N3	-2.48	120.04	123.43
6	F	501	FAD	C4X-C4-N3	-2.46	120.07	123.43
6	D	510	FAD	P-O3P-PA	-2.43	124.49	132.83
6	B	510	FAD	C4X-C4-N3	-2.39	120.16	123.43
6	E	511	FAD	C1'-N10-C10	2.39	120.55	118.41
6	B	510	FAD	C10-C4X-N5	-2.38	119.61	121.26
6	C	510	FAD	C4X-C4-N3	-2.37	120.19	123.43
6	E	511	FAD	C4-C4X-N5	2.37	121.31	118.60
6	D	510	FAD	C4-C4X-N5	2.37	121.30	118.60
6	E	511	FAD	C4X-C4-N3	-2.34	120.23	123.43
6	A	512	FAD	C4X-C4-N3	-2.34	120.23	123.43
6	B	510	FAD	C4-C4X-N5	2.21	121.13	118.60
6	B	510	FAD	P-O3P-PA	-2.19	125.31	132.83
6	D	510	FAD	C4A-C5A-N7A	-2.17	107.14	109.40
6	B	510	FAD	C4A-C5A-N7A	-2.10	107.21	109.40
6	B	510	FAD	C9A-C5X-N5	-2.08	119.11	122.36
6	C	510	FAD	C4-C4X-N5	2.08	120.97	118.60
6	A	512	FAD	C9A-C5X-N5	-2.06	119.13	122.36
6	F	501	FAD	C4A-C5A-N7A	-2.06	107.25	109.40

There are no chirality outliers.

All (33) torsion outliers are listed below:

Mol	Chain	Res	Type	Atoms
3	F	504	GOL	O1-C1-C2-O2
3	F	504	GOL	O1-C1-C2-C3
3	E	504	GOL	C1-C2-C3-O3
6	C	510	FAD	PA-O3P-P-O5'
6	E	511	FAD	O4B-C4B-C5B-O5B
3	F	503	GOL	O1-C1-C2-C3
3	B	506	GOL	O1-C1-C2-C3
3	F	503	GOL	O1-C1-C2-O2
6	B	510	FAD	O4B-C4B-C5B-O5B
6	E	511	FAD	C3B-C4B-C5B-O5B
3	C	503	GOL	C1-C2-C3-O3
3	E	505	GOL	O1-C1-C2-C3
3	B	505	GOL	O1-C1-C2-C3
3	A	505	GOL	O1-C1-C2-C3
3	D	506	GOL	O1-C1-C2-C3
3	B	506	GOL	C1-C2-C3-O3
3	E	504	GOL	O2-C2-C3-O3
3	B	505	GOL	O1-C1-C2-O2

Continued on next page...

Continued from previous page...

Mol	Chain	Res	Type	Atoms
3	B	506	GOL	O2-C2-C3-O3
3	B	506	GOL	O1-C1-C2-O2
3	C	503	GOL	O2-C2-C3-O3
3	D	507	GOL	O2-C2-C3-O3
3	E	505	GOL	O1-C1-C2-O2
3	D	506	GOL	O1-C1-C2-O2
6	D	510	FAD	PA-O3P-P-O5'
6	A	512	FAD	O4B-C4B-C5B-O5B
6	D	510	FAD	O4B-C4B-C5B-O5B
6	B	510	FAD	C3B-C4B-C5B-O5B
6	F	501	FAD	O4B-C4B-C5B-O5B
6	C	510	FAD	O4B-C4B-C5B-O5B
3	D	507	GOL	O1-C1-C2-C3
3	A	505	GOL	O1-C1-C2-O2
3	D	507	GOL	C1-C2-C3-O3

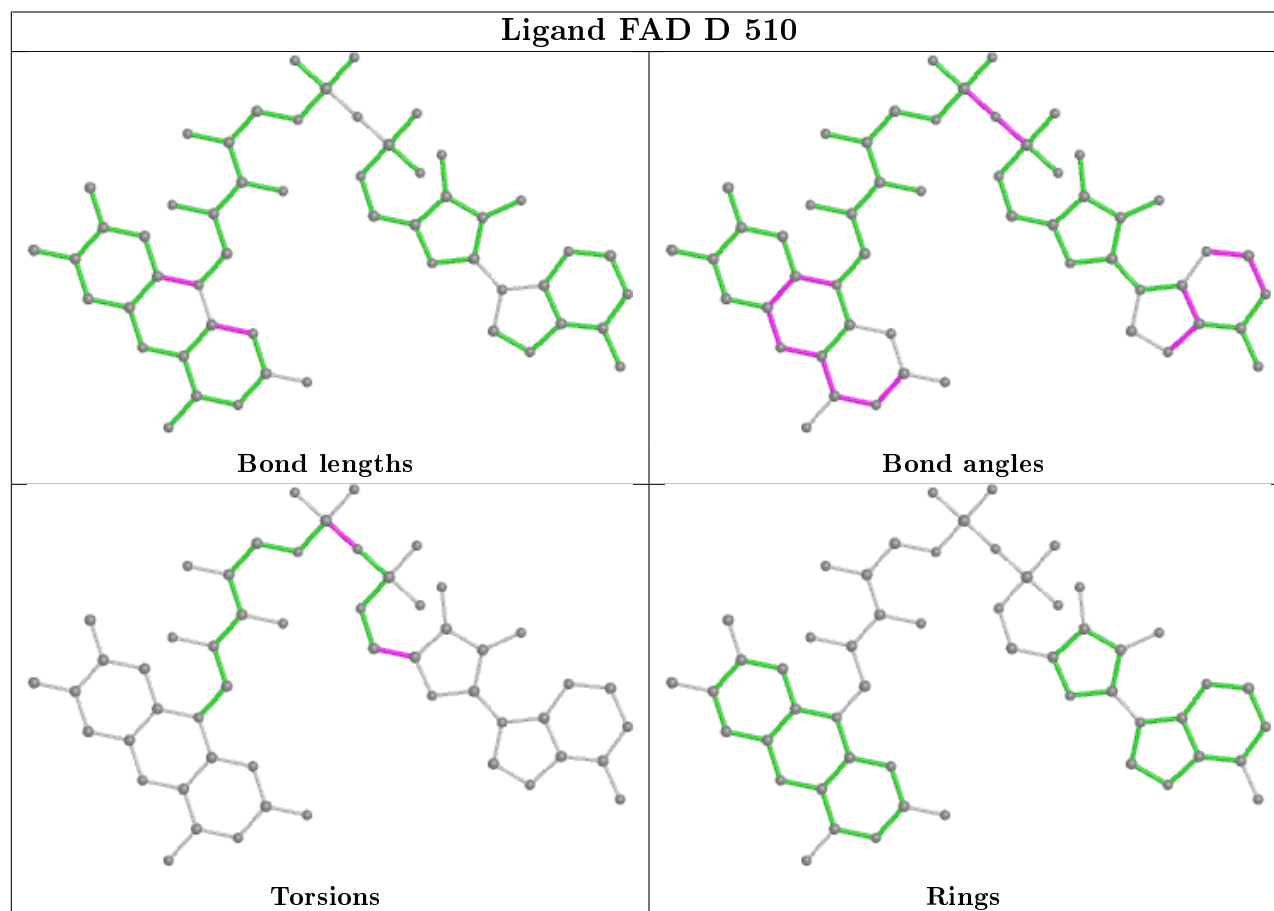
There are no ring outliers.

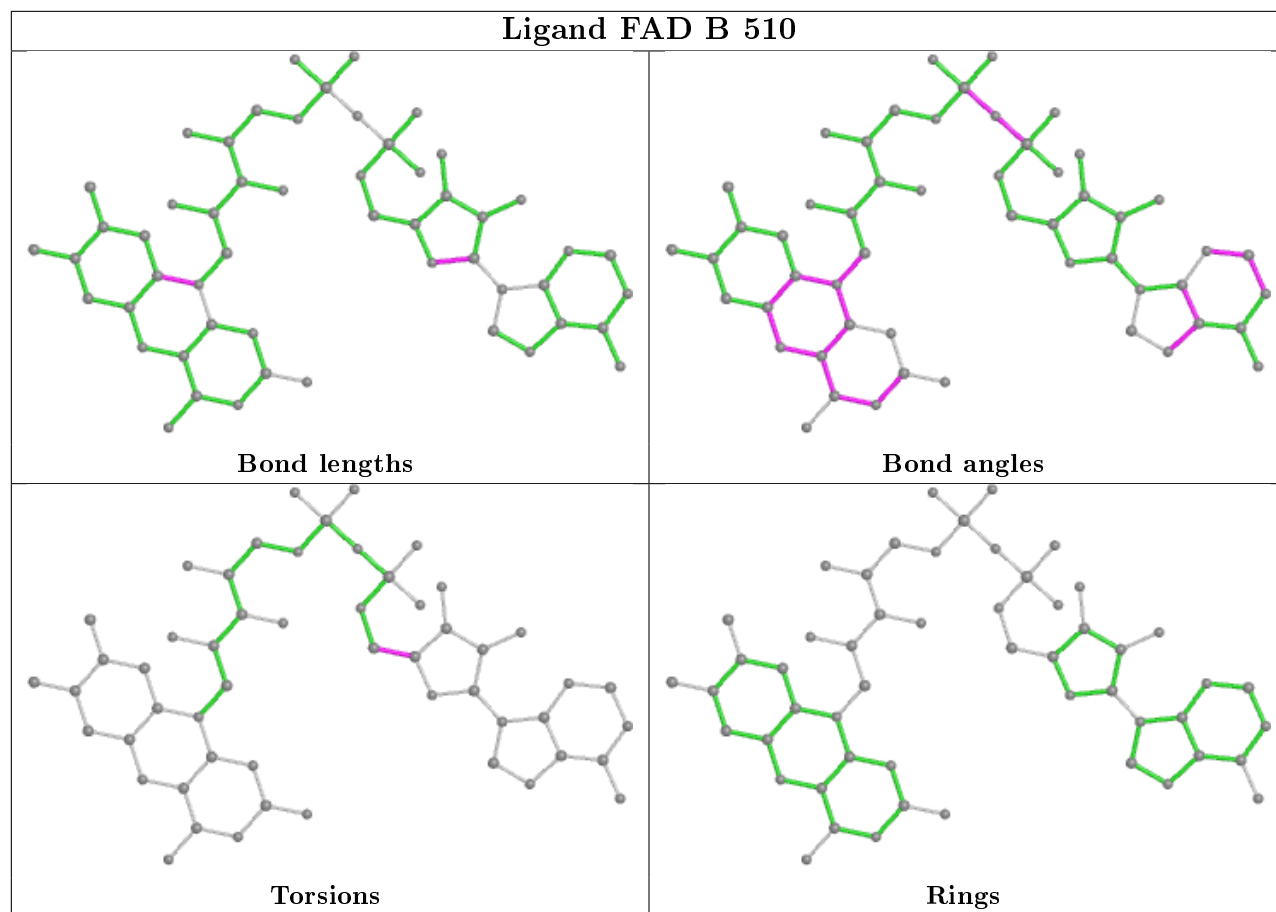
17 monomers are involved in 19 short contacts:

Mol	Chain	Res	Type	Clashes	Symm-Clashes
2	A	511	SO4	1	0
2	B	507	SO4	1	0
4	A	507	IMD	1	0
6	B	510	FAD	1	0
3	E	504	GOL	1	0
6	F	501	FAD	1	0
3	C	503	GOL	1	0
3	D	507	GOL	2	0
6	E	511	FAD	1	0
2	B	508	SO4	1	0
4	C	504	IMD	1	0
2	B	503[A]	SO4	1	0
2	E	503[B]	SO4	1	0
2	B	503[B]	SO4	2	0
2	E	502	SO4	1	0
6	A	512	FAD	2	0
4	A	506	IMD	1	0

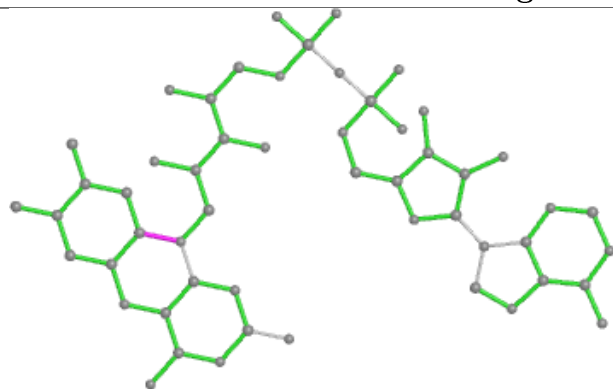
The following is a two-dimensional graphical depiction of Mogul quality analysis of bond lengths, bond angles, torsion angles, and ring geometry for all instances of the Ligand of Interest. In addition, ligands with molecular weight > 250 and outliers as shown on the validation Tables will also be included. For torsion angles, if less than 5% of the Mogul distribution of torsion angles is

within 10 degrees of the torsion angle in question, then that torsion angle is considered an outlier. Any bond that is central to one or more torsion angles identified as an outlier by Mogul will be highlighted in the graph. For rings, the root-mean-square deviation (RMSD) between the ring in question and similar rings identified by Mogul is calculated over all ring torsion angles. If the average RMSD is greater than 60 degrees and the minimal RMSD between the ring in question and any Mogul-identified rings is also greater than 60 degrees, then that ring is considered an outlier. The outliers are highlighted in purple. The color gray indicates Mogul did not find sufficient equivalents in the CSD to analyse the geometry.

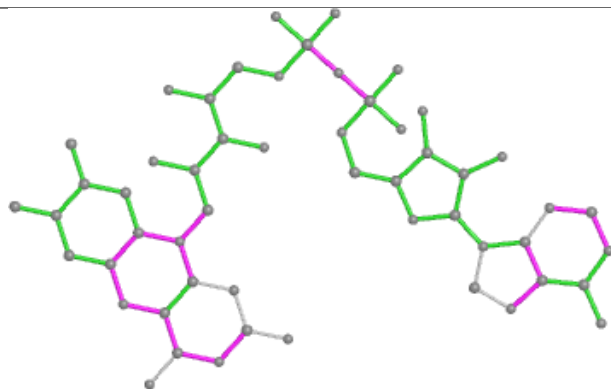




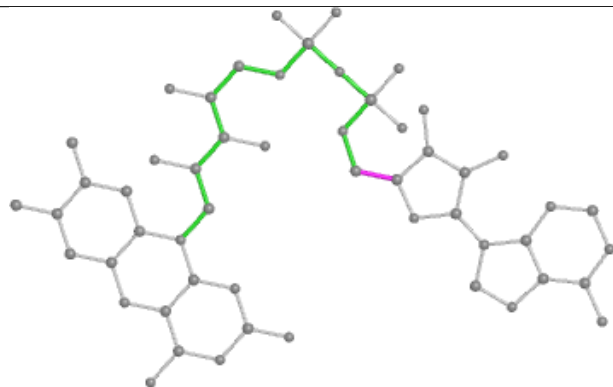
Ligand FAD F 501



Bond lengths



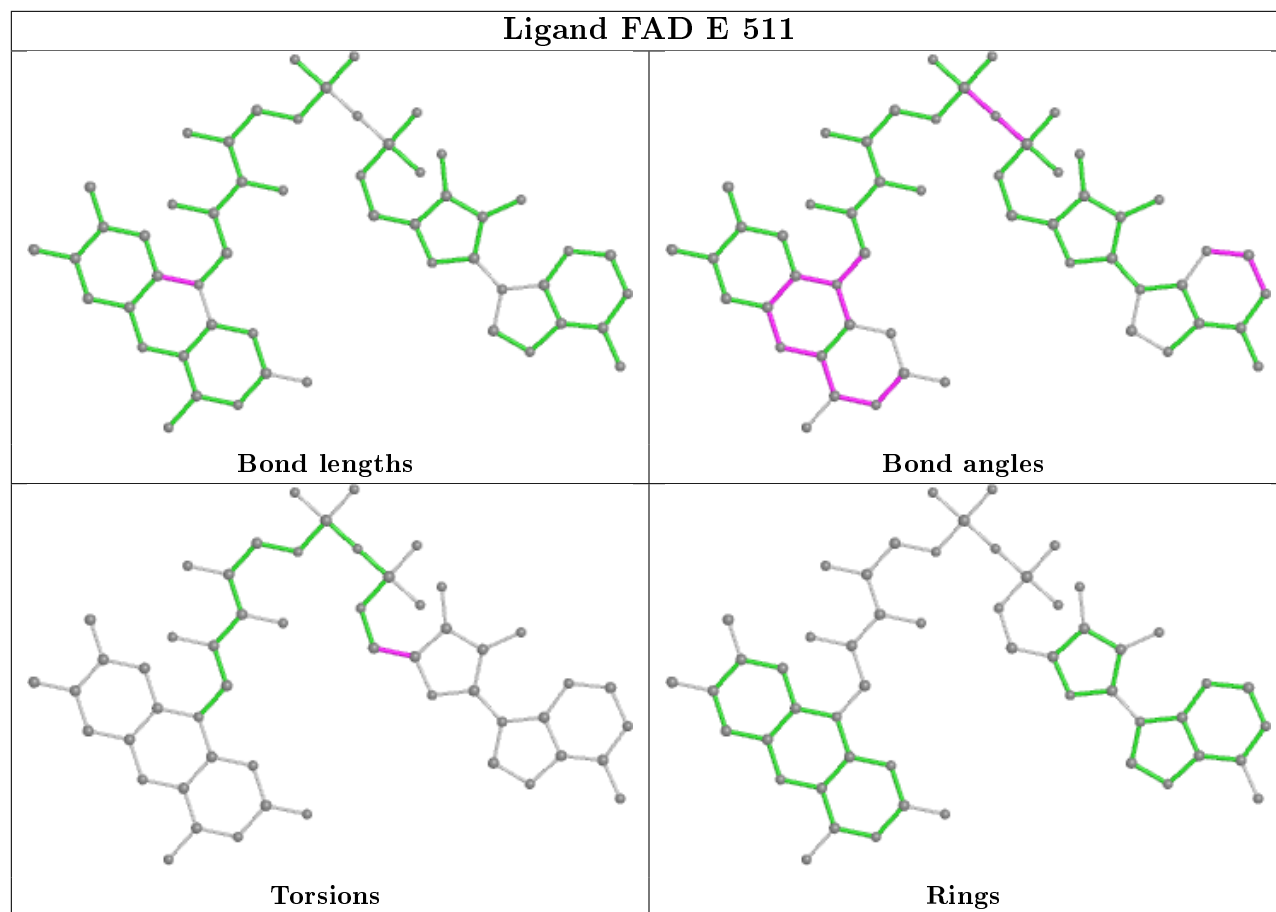
Bond angles

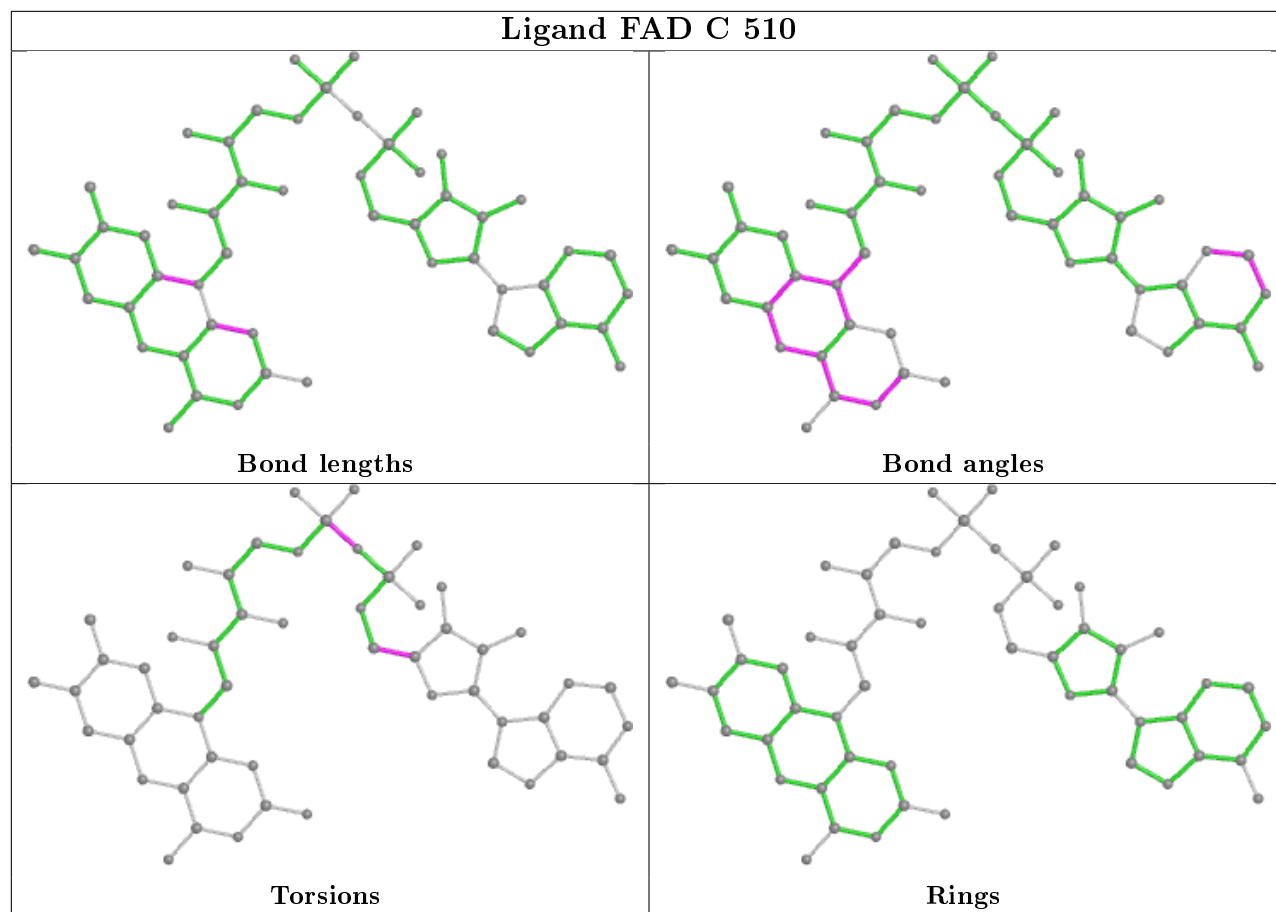


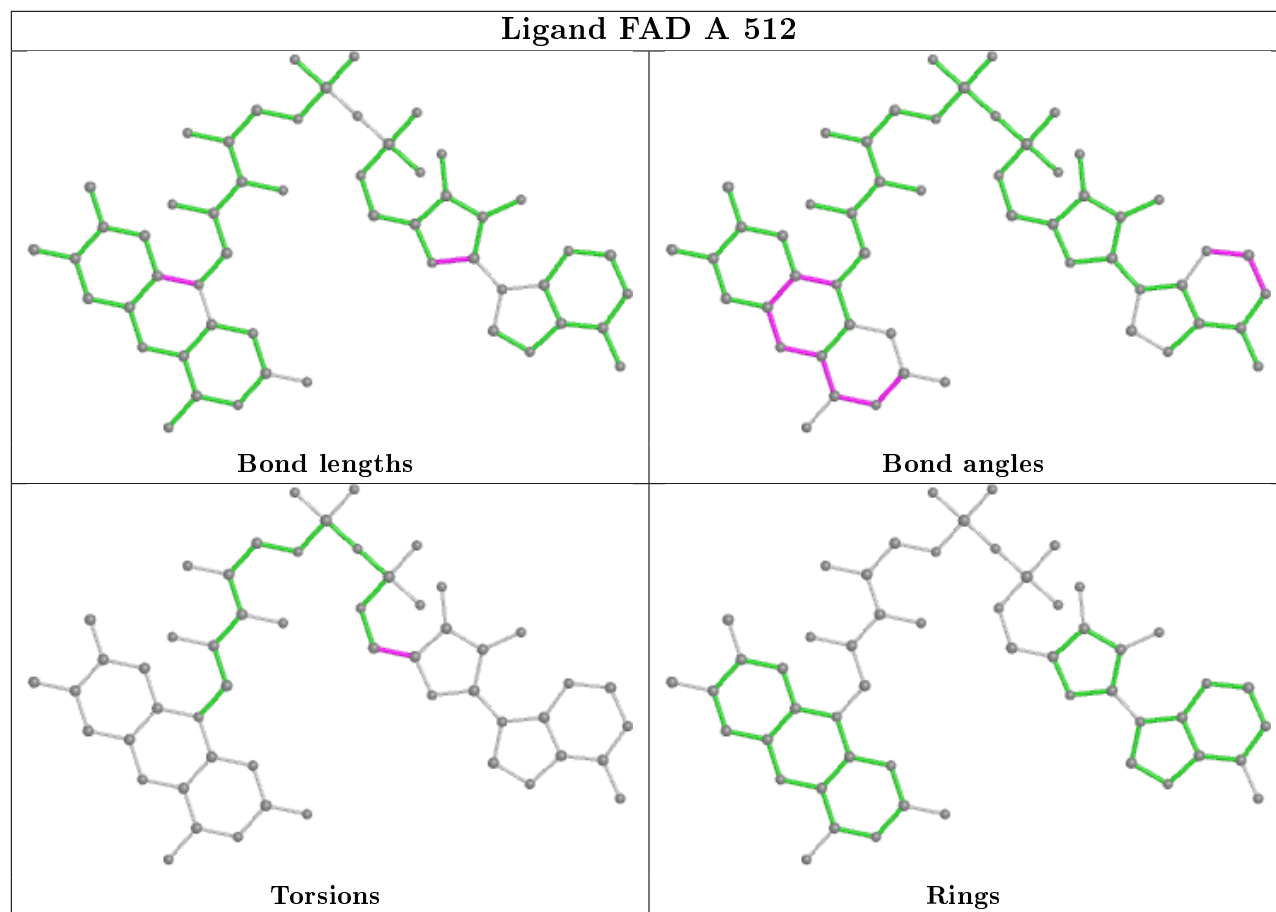
Torsions



Rings







5.7 Other polymers [i](#)

There are no such residues in this entry.

5.8 Polymer linkage issues [i](#)

There are no chain breaks in this entry.

6 Fit of model and data ⓘ

6.1 Protein, DNA and RNA chains ⓘ

In the following table, the column labelled ‘#RSRZ> 2’ contains the number (and percentage) of RSRZ outliers, followed by percent RSRZ outliers for the chain as percentile scores relative to all X-ray entries and entries of similar resolution. The OWAB column contains the minimum, median, 95th percentile and maximum values of the occupancy-weighted average B-factor per residue. The column labelled ‘Q< 0.9’ lists the number of (and percentage) of residues with an average occupancy less than 0.9.

Mol	Chain	Analysed	<RSRZ>	#RSRZ>2	OWAB(Å ²)	Q<0.9
1	A	471/474 (99%)	-0.15	2 (0%) 92 92	16, 29, 58, 74	0
1	B	471/474 (99%)	-0.10	6 (1%) 77 77	16, 30, 60, 82	0
1	C	469/474 (98%)	-0.08	10 (2%) 63 64	19, 33, 58, 98	0
1	D	469/474 (98%)	0.16	23 (4%) 29 31	19, 36, 64, 99	0
1	E	471/474 (99%)	0.11	21 (4%) 33 34	22, 41, 71, 102	0
1	F	469/474 (98%)	0.08	17 (3%) 42 43	25, 43, 73, 113	0
All	All	2820/2844 (99%)	0.00	79 (2%) 53 54	16, 35, 65, 113	0

All (79) RSRZ outliers are listed below:

Mol	Chain	Res	Type	RSRZ
1	D	38[A]	TYR	6.5
1	D	372	ILE	4.5
1	C	2	SER	4.5
1	D	77	GLY	4.5
1	D	404	GLU	4.2
1	F	80	LYS	4.1
1	F	404	GLU	3.9
1	E	247	GLY	3.9
1	E	2	SER	3.9
1	E	256	LYS	3.8
1	C	404	GLU	3.7
1	E	259	ALA	3.5
1	F	403	LYS	3.5
1	B	259	ALA	3.3
1	F	339	LYS	3.3
1	E	253	GLU	3.3
1	D	403	LYS	3.3
1	D	371	GLY	3.2
1	E	38	TYR	3.1

Continued on next page...

Continued from previous page...

Mol	Chain	Res	Type	RSRZ
1	E	245	GLU	3.1
1	D	406	HIS	3.1
1	F	78	GLU	3.0
1	D	367	ALA	3.0
1	D	287	VAL	3.0
1	F	124	THR	3.0
1	F	337	GLY	3.0
1	E	228	LYS	3.0
1	E	80	LYS	2.9
1	F	228	LYS	2.8
1	D	306	PRO	2.8
1	D	341	TYR	2.8
1	E	286	GLY	2.8
1	F	77	GLY	2.8
1	D	78	GLU	2.8
1	F	76	PHE	2.7
1	E	246	ASP	2.6
1	D	76	PHE	2.6
1	D	470	LYS	2.6
1	D	369	GLU	2.6
1	D	339	LYS	2.6
1	D	421	LEU	2.6
1	E	306	PRO	2.6
1	C	78	GLU	2.6
1	E	260	GLU	2.5
1	F	75	VAL	2.5
1	B	245	GLU	2.5
1	F	120	THR	2.5
1	F	373	SER	2.5
1	E	255	LYS	2.5
1	D	2	SER	2.5
1	A	260	GLU	2.5
1	B	40	THR	2.5
1	B	254	GLY	2.4
1	B	472	LYS	2.4
1	C	31	GLU	2.4
1	D	70	ALA	2.3
1	E	78	GLU	2.3
1	F	468	ASN	2.3
1	E	257	ALA	2.3
1	B	260	GLU	2.2
1	F	245	GLU	2.2

Continued on next page...

Continued from previous page...

Mol	Chain	Res	Type	RSRZ
1	C	406	HIS	2.2
1	E	307	HIS	2.2
1	D	39	ASN	2.2
1	E	83	ILE	2.2
1	E	122	ALA	2.2
1	F	369	GLU	2.2
1	D	368	LYS	2.2
1	C	407	ARG	2.2
1	E	339	LYS	2.2
1	C	3	THR	2.1
1	C	76	PHE	2.1
1	E	341	TYR	2.1
1	D	288	GLU	2.1
1	A	259	ALA	2.1
1	D	370	LYS	2.1
1	C	259	ALA	2.0
1	F	3	THR	2.0
1	C	75	VAL	2.0

6.2 Non-standard residues in protein, DNA, RNA chains [i](#)

There are no non-standard protein/DNA/RNA residues in this entry.

6.3 Carbohydrates [i](#)

There are no carbohydrates in this entry.

6.4 Ligands [i](#)

In the following table, the Atoms column lists the number of modelled atoms in the group and the number defined in the chemical component dictionary. The B-factors column lists the minimum, median, 95th percentile and maximum values of B factors of atoms in the group. The column labelled 'Q< 0.9' lists the number of atoms with occupancy less than 0.9.

Mol	Type	Chain	Res	Atoms	RSCC	RSR	B-factors(Å ²)	Q<0.9
3	GOL	B	506	6/6	0.70	0.20	60,70,72,73	0
5	CL	A	508	1/1	0.73	0.20	85,85,85,85	0
2	SO4	A	510	5/5	0.74	0.21	95,96,97,100	5
3	GOL	E	505	6/6	0.77	0.27	51,55,56,57	0
2	SO4	C	509	5/5	0.83	0.21	80,80,82,83	5

Continued on next page...

Continued from previous page...

Mol	Type	Chain	Res	Atoms	RSCC	RSR	B-factors(\AA^2)	Q<0.9
4	IMD	E	506	5/5	0.83	0.31	75,75,78,79	0
3	GOL	D	507	6/6	0.84	0.28	48,53,55,58	0
4	IMD	A	507	5/5	0.84	0.19	65,66,67,68	0
5	CL	C	505	1/1	0.85	0.07	65,65,65,65	0
2	SO4	B	509	5/5	0.85	0.24	107,107,108,109	5
3	GOL	F	503	6/6	0.85	0.14	42,43,48,50	0
5	CL	E	507	1/1	0.87	0.09	70,70,70,70	0
2	SO4	B	504	5/5	0.87	0.23	72,73,74,75	5
2	SO4	D	505	5/5	0.87	0.18	106,106,107,108	0
2	SO4	D	508	5/5	0.87	0.18	76,77,79,81	5
2	SO4	D	504[B]	5/5	0.88	0.24	45,47,49,51	5
2	SO4	D	504[A]	5/5	0.88	0.24	32,34,38,43	5
2	SO4	E	510	5/5	0.89	0.28	80,80,82,85	5
2	SO4	E	503[A]	5/5	0.90	0.24	37,40,43,48	5
2	SO4	F	507	5/5	0.90	0.21	85,86,89,89	5
2	SO4	E	503[B]	5/5	0.90	0.24	41,43,45,48	5
3	GOL	F	504	6/6	0.90	0.08	45,48,52,54	0
2	SO4	E	502	5/5	0.91	0.20	48,53,61,61	5
4	IMD	C	504	5/5	0.91	0.14	49,51,54,54	0
2	SO4	B	507	5/5	0.91	0.28	71,74,76,76	5
5	CL	C	508	1/1	0.91	0.07	76,76,76,76	0
2	SO4	D	509	5/5	0.91	0.15	75,76,76,76	5
5	CL	A	509	1/1	0.91	0.11	64,64,64,64	1
5	CL	E	508	1/1	0.92	0.12	43,43,43,43	1
5	CL	F	505	1/1	0.92	0.05	76,76,76,76	0
2	SO4	D	502	5/5	0.92	0.17	81,81,82,82	5
4	IMD	A	506	5/5	0.92	0.26	46,47,47,49	0
2	SO4	A	511	5/5	0.92	0.23	29,36,44,51	5
3	GOL	E	504	6/6	0.93	0.16	38,40,44,49	0
3	GOL	D	506	6/6	0.93	0.14	34,37,38,38	0
2	SO4	B	501	5/5	0.93	0.26	45,49,53,55	5
2	SO4	A	503	5/5	0.93	0.11	70,71,73,77	5
2	SO4	B	502	5/5	0.93	0.11	61,63,66,69	5
5	CL	F	506	1/1	0.94	0.05	64,64,64,64	0
2	SO4	B	503[B]	5/5	0.95	0.22	26,30,34,35	5
2	SO4	A	504	5/5	0.95	0.17	70,70,70,73	5
2	SO4	B	503[A]	5/5	0.95	0.22	31,31,36,37	5
3	GOL	B	505	6/6	0.95	0.11	29,31,31,33	0
3	GOL	C	503	6/6	0.95	0.13	32,38,39,45	0
5	CL	C	507	1/1	0.95	0.15	67,67,67,67	1
6	FAD	E	511	53/53	0.96	0.13	18,29,46,47	0
3	GOL	A	505	6/6	0.96	0.09	24,26,28,32	0

Continued on next page...

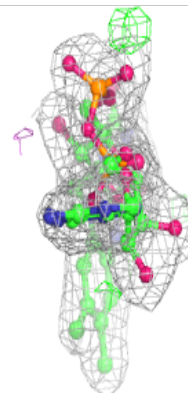
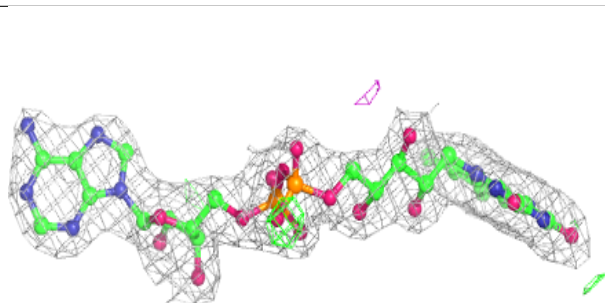
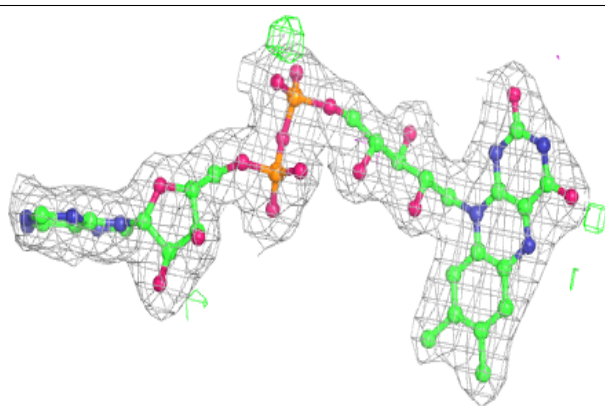
Continued from previous page...

Mol	Type	Chain	Res	Atoms	RSCC	RSR	B-factors(\AA^2)	Q<0.9
2	SO4	D	503	5/5	0.96	0.20	33,38,43,44	5
2	SO4	B	508	5/5	0.96	0.26	34,44,52,53	5
2	SO4	D	501	5/5	0.96	0.17	81,83,83,84	5
5	CL	E	509	1/1	0.96	0.12	59,59,59,59	1
5	CL	C	506	1/1	0.97	0.07	68,68,68,68	0
6	FAD	F	501	53/53	0.97	0.10	14,31,43,45	0
6	FAD	C	510	53/53	0.97	0.12	12,24,31,32	0
2	SO4	C	502	5/5	0.97	0.23	52,54,58,62	5
2	SO4	A	502	5/5	0.97	0.11	55,55,57,58	5
6	FAD	D	510	53/53	0.98	0.12	15,25,33,40	0
2	SO4	F	502	5/5	0.98	0.14	50,51,53,55	5
6	FAD	A	512	53/53	0.98	0.12	10,20,30,32	0
2	SO4	A	501	5/5	0.98	0.13	37,42,43,45	5
6	FAD	B	510	53/53	0.98	0.12	12,21,34,38	0
2	SO4	E	501	5/5	0.99	0.10	28,30,35,39	5
2	SO4	C	501	5/5	0.99	0.20	33,41,46,49	5

The following is a graphical depiction of the model fit to experimental electron density of all instances of the Ligand of Interest. In addition, ligands with molecular weight > 250 and outliers as shown on the geometry validation Tables will also be included. Each fit is shown from different orientation to approximate a three-dimensional view.

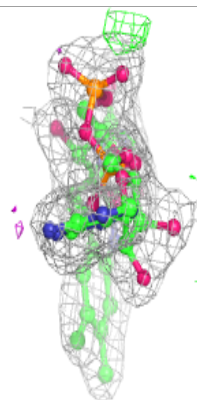
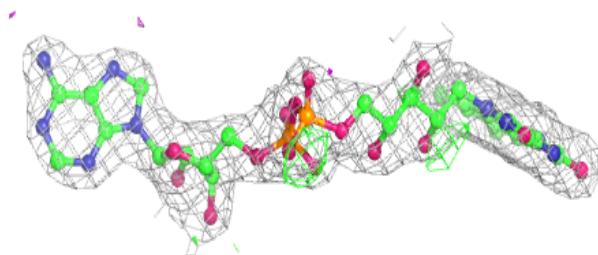
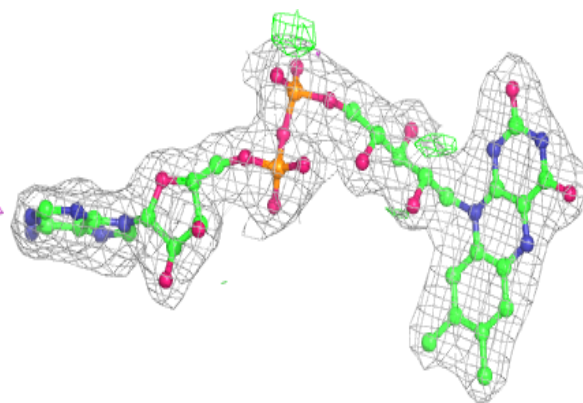
Electron density around FAD E 511:

2mF_o-DF_c (at 0.7 rmsd) in gray
mF_o-DF_c (at 3 rmsd) in purple (negative)
and green (positive)

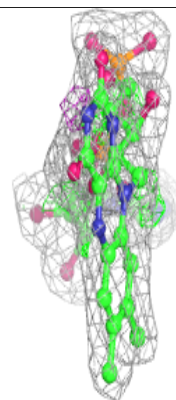
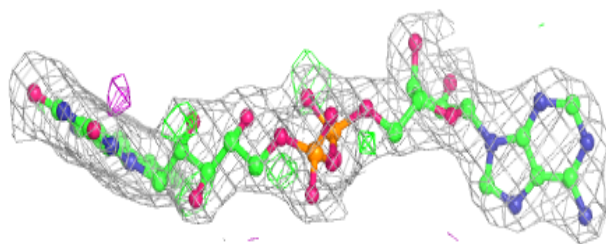
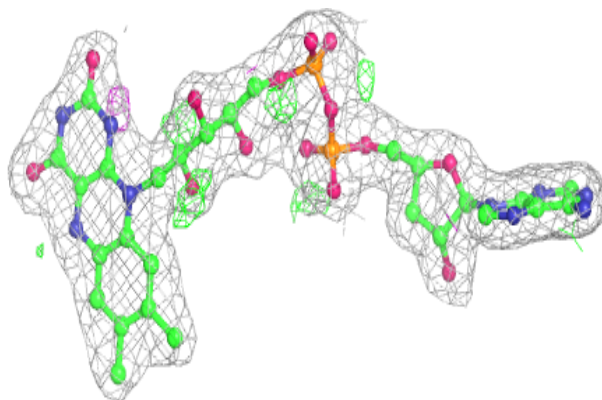


Electron density around FAD F 501:

$2mF_o - DF_c$ (at 0.7 rmsd) in gray
 $mF_o - DF_c$ (at 3 rmsd) in purple (negative)
and green (positive)

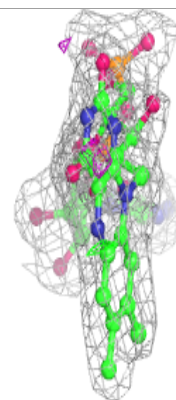
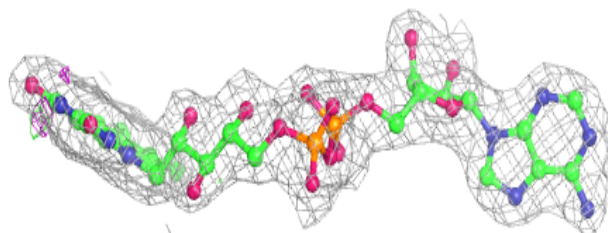
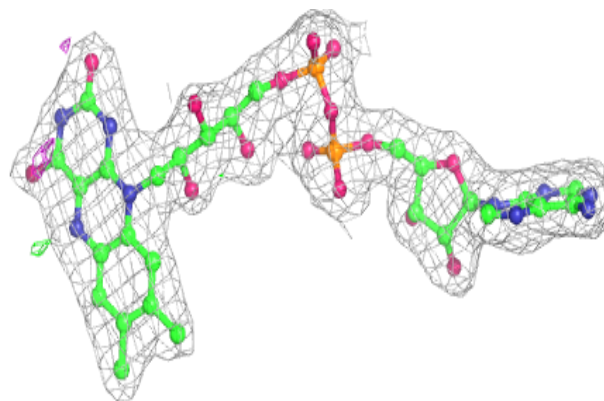
**Electron density around FAD C 510:**

$2mF_o - DF_c$ (at 0.7 rmsd) in gray
 $mF_o - DF_c$ (at 3 rmsd) in purple (negative)
and green (positive)

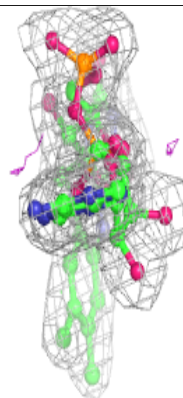
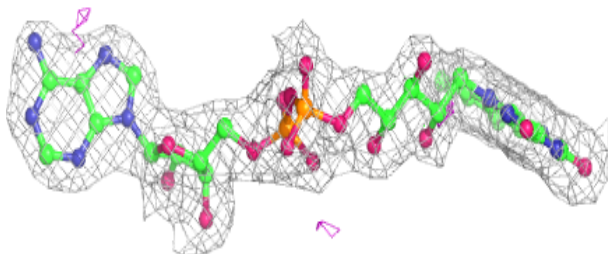
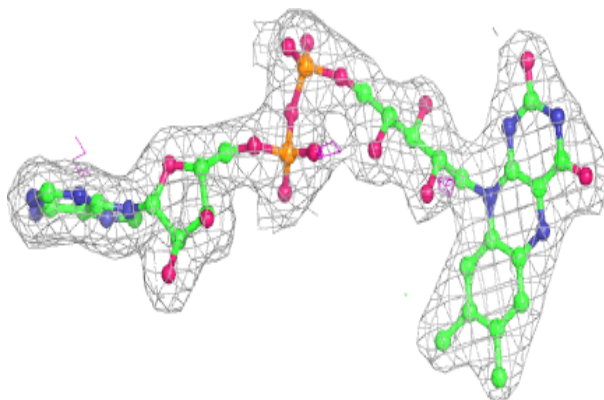


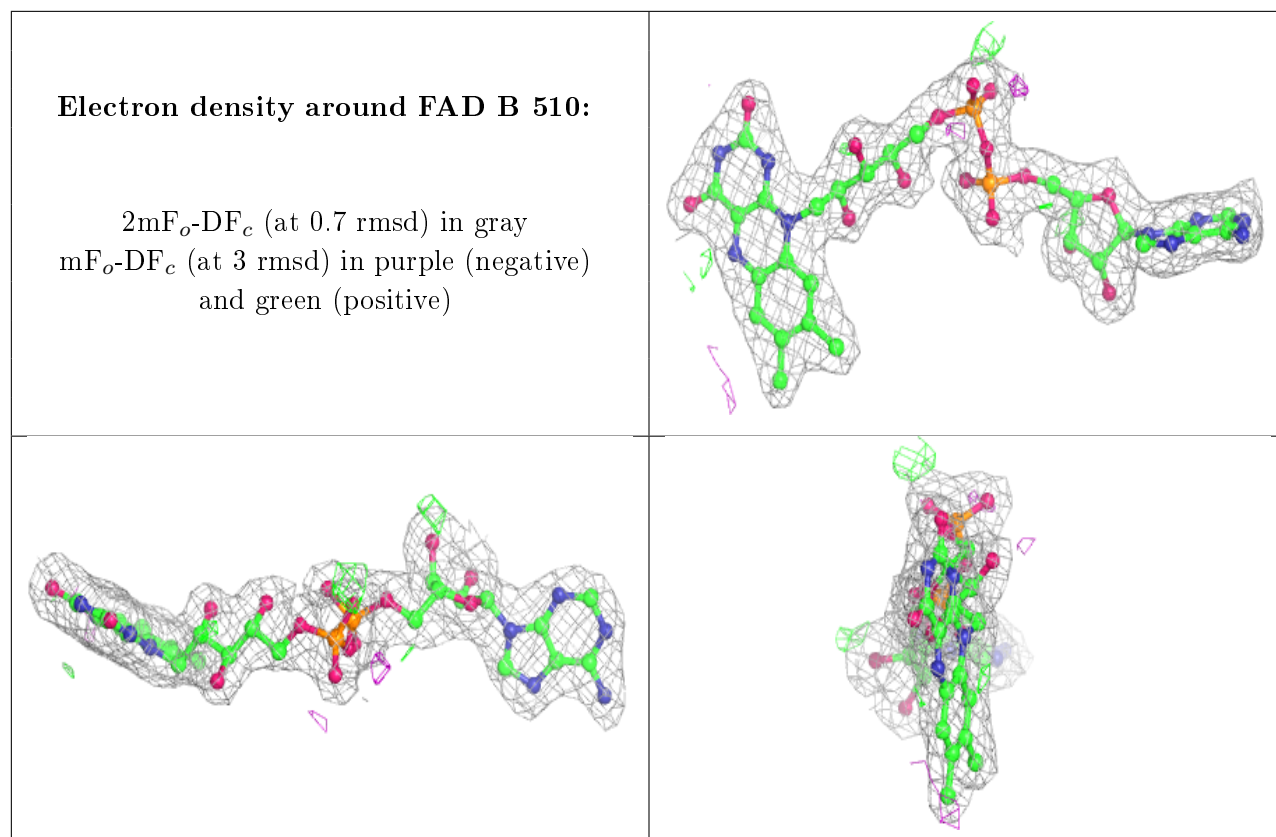
Electron density around FAD D 510:

$2mF_o-DF_c$ (at 0.7 rmsd) in gray
 mF_o-DF_c (at 3 rmsd) in purple (negative)
and green (positive)

**Electron density around FAD A 512:**

$2mF_o-DF_c$ (at 0.7 rmsd) in gray
 mF_o-DF_c (at 3 rmsd) in purple (negative)
and green (positive)





6.5 Other polymers [i](#)

There are no such residues in this entry.