



wwPDB X-ray Structure Validation Summary Report ⓘ

Sep 13, 2020 – 05:01 PM BST

PDB ID : 4JQI
Title : Structure of active beta-arrestin1 bound to a G protein-coupled receptor phosphopeptide
Authors : Shukla, A.K.; Manglik, A.; Kruse, A.C.; Xiao, K.; Reis, R.I.; Tseng, W.C.; Staus, D.P.; Hilger, D.; Uysal, S.; Huang, L.H.; Paduch, M.; Shukla, P.T.; Koide, A.; Koide, S.; Weis, W.I.; Kossiakoff, A.A.; Kobilka, B.K.; Lefkowitz, R.J.
Deposited on : 2013-03-20
Resolution : 2.60 Å(reported)

This is a wwPDB X-ray Structure Validation Summary Report for a publicly released PDB entry.

We welcome your comments at validation@mail.wwpdb.org

A user guide is available at

<https://www.wwpdb.org/validation/2017/XrayValidationReportHelp>

with specific help available everywhere you see the ⓘ symbol.

The following versions of software and data (see [references ⓘ](#)) were used in the production of this report:

MolProbity	:	4.02b-467
Mogul	:	1.8.5 (274361), CSD as541be (2020)
Xtriage (Phenix)	:	1.13
EDS	:	2.14.4.dev1
Percentile statistics	:	20191225.v01 (using entries in the PDB archive December 25th 2019)
Refmac	:	5.8.0158
CCP4	:	7.0.044 (Gargrove)
Ideal geometry (proteins)	:	Engh & Huber (2001)
Ideal geometry (DNA, RNA)	:	Parkinson et al. (1996)
Validation Pipeline (wwPDB-VP)	:	2.14.4.dev1

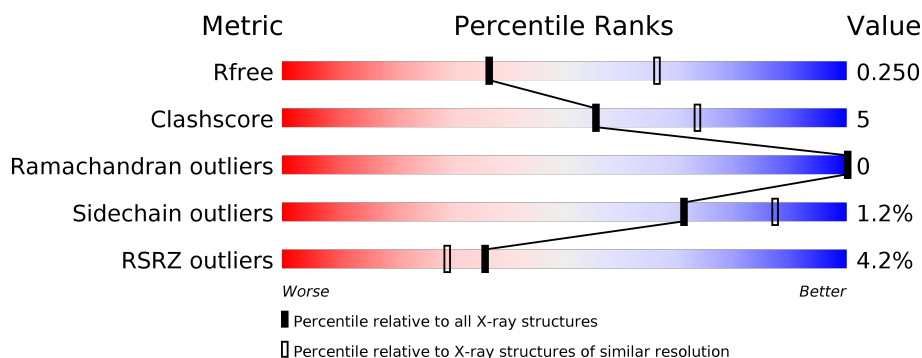
1 Overall quality at a glance

The following experimental techniques were used to determine the structure:

X-RAY DIFFRACTION

The reported resolution of this entry is 2.60 Å.

Percentile scores (ranging between 0-100) for global validation metrics of the entry are shown in the following graphic. The table shows the number of entries on which the scores are based.



Metric	Whole archive (#Entries)	Similar resolution (#Entries, resolution range(Å))
R_{free}	130704	3163 (2.60-2.60)
Clashscore	141614	3518 (2.60-2.60)
Ramachandran outliers	138981	3455 (2.60-2.60)
Sidechain outliers	138945	3455 (2.60-2.60)
RSRZ outliers	127900	3104 (2.60-2.60)

The table below summarises the geometric issues observed across the polymeric chains and their fit to the electron density. The red, orange, yellow and green segments on the lower bar indicate the fraction of residues that contain outliers for ≥ 3 , 2, 1 and 0 types of geometric quality criteria respectively. A grey segment represents the fraction of residues that are not modelled. The numeric value for each fraction is indicated below the corresponding segment, with a dot representing fractions $\leq 5\%$. The upper red bar (where present) indicates the fraction of residues that have poor fit to the electron density. The numeric value is given above the bar.

Mol	Chain	Length	Quality of chain
1	A	401	<div> <div style="width: 100%; height: 10px; background: linear-gradient(to right, red 1%, green 1%, green 76%, yellow 11%, grey 12%);"></div> <div style="display: flex; justify-content: space-between; width: 100%;"> % 76% 11% 12% </div> </div>
2	H	237	<div> <div style="width: 100%; height: 10px; background: linear-gradient(to right, red 5%, green 1%, green 80%, yellow 6%, grey 14%);"></div> <div style="display: flex; justify-content: space-between; width: 100%;"> 5% 80% 6% 14% </div> </div>
3	L	215	<div> <div style="width: 100%; height: 10px; background: linear-gradient(to right, red 7%, green 1%, green 74%, yellow 12%, grey 14%);"></div> <div style="display: flex; justify-content: space-between; width: 100%;"> 7% 74% 12% 14% </div> </div>
4	V	29	<div> <div style="width: 100%; height: 10px; background: linear-gradient(to right, red 3%, green 1%, green 41%, yellow 24%, orange 7%, grey 28%);"></div> <div style="display: flex; justify-content: space-between; width: 100%;"> 3% 41% 24% 7% 28% </div> </div>

The following table lists non-polymeric compounds, carbohydrate monomers and non-standard residues in protein, DNA, RNA chains that are outliers for geometric or electron-density-fit crite-

ria:

Mol	Type	Chain	Res	Chirality	Geometry	Clashes	Electron density
6	EDO	H	303	-	-	-	X

2 Entry composition

There are 8 unique types of molecules in this entry. The entry contains 5858 atoms, of which 0 are hydrogens and 0 are deuteriums.

In the tables below, the ZeroOcc column contains the number of atoms modelled with zero occupancy, the AltConf column contains the number of residues with at least one atom in alternate conformation and the Trace column contains the number of residues modelled with at most 2 atoms.

- Molecule 1 is a protein called Beta-arrestin-1.

Mol	Chain	Residues	Atoms					ZeroOcc	AltConf	Trace
1	A	353	Total	C	N	O	S	0	0	0
			2698	1729	459	500	10			

There are 9 discrepancies between the modelled and reference sequences:

Chain	Residue	Modelled	Actual	Comment	Reference
A	-7	GLY	-	EXPRESSION TAG	UNP P29066
A	-6	SER	-	EXPRESSION TAG	UNP P29066
A	-5	PRO	-	EXPRESSION TAG	UNP P29066
A	-4	GLU	-	EXPRESSION TAG	UNP P29066
A	-3	PHE	-	EXPRESSION TAG	UNP P29066
A	-2	PRO	-	EXPRESSION TAG	UNP P29066
A	-1	GLY	-	EXPRESSION TAG	UNP P29066
A	0	ARG	-	EXPRESSION TAG	UNP P29066
A	1	LEU	-	EXPRESSION TAG	UNP P29066

- Molecule 2 is a protein called Fab30 heavy chain.

Mol	Chain	Residues	Atoms					ZeroOcc	AltConf	Trace
2	H	204	Total	C	N	O	S	0	0	0
			1496	950	249	292	5			

- Molecule 3 is a protein called Fab30 light chain.

Mol	Chain	Residues	Atoms					ZeroOcc	AltConf	Trace
3	L	185	Total	C	N	O	S	0	0	0
			1359	856	225	274	4			

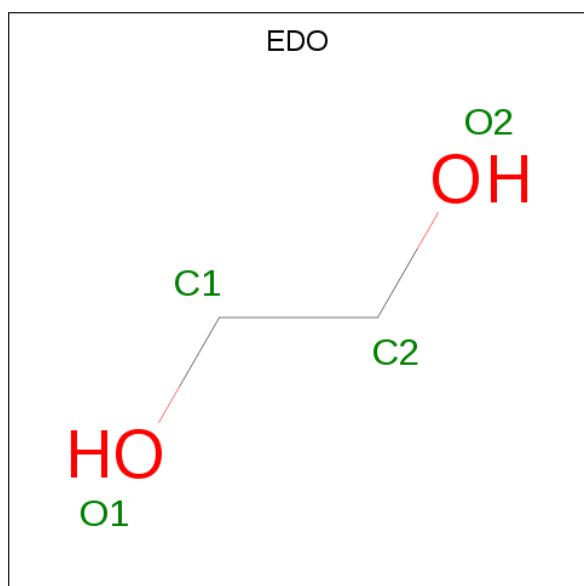
- Molecule 4 is a protein called Vasopressin V2 receptor phosphopeptide.

Mol	Chain	Residues	Atoms						ZeroOcc	AltConf	Trace
4	V	21	Total	C	N	O	P	S	0	0	0
			163	78	21	55	8	1			

- Molecule 5 is CHLORIDE ION (three-letter code: CL) (formula: Cl).

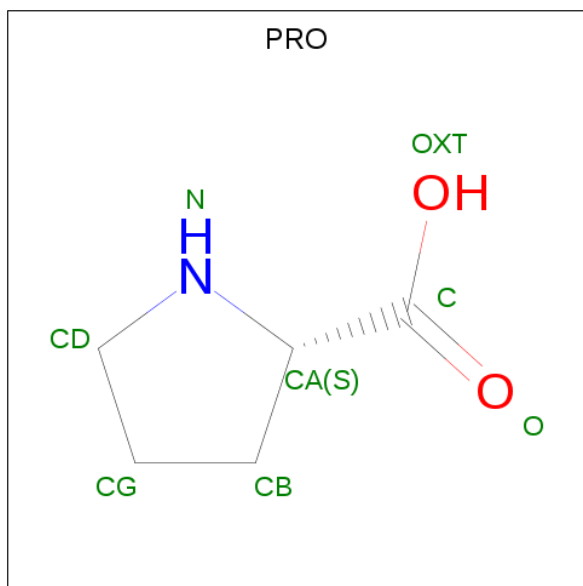
Mol	Chain	Residues	Atoms		ZeroOcc	AltConf
5	H	1	Total	Cl	0	0
			1	1		
5	A	1	Total	Cl	0	0
			1	1		

- Molecule 6 is 1,2-ETHANEDIOL (three-letter code: EDO) (formula: C₂H₆O₂).



Mol	Chain	Residues	Atoms			ZeroOcc	AltConf
6	A	1	Total	C	O	0	0
			4	2	2		
6	H	1	Total	C	O	0	0
			4	2	2		
6	H	1	Total	C	O	0	0
			4	2	2		
6	H	1	Total	C	O	0	0
			4	2	2		
6	L	1	Total	C	O	0	0
			4	2	2		
6	L	1	Total	C	O	0	0
			4	2	2		

- Molecule 7 is PROLINE (three-letter code: PRO) (formula: $C_5H_9NO_2$).



Mol	Chain	Residues	Atoms				ZeroOcc	AltConf
7	L	1	Total	C	N	O	0	0
			8	5	1	2		

- Molecule 8 is water.

Mol	Chain	Residues	Atoms		ZeroOcc	AltConf
8	A	69	Total	O	0	0
			69	69		
8	H	27	Total	O	0	0
			27	27		
8	L	8	Total	O	0	0
			8	8		
8	V	4	Total	O	0	0
			4	4		

- Molecule 1: Beta-arrestin-1





4 Data and refinement statistics

Property	Value	Source
Space group	I 21 21 21	Depositor
Cell constants a, b, c, α , β , γ	116.84Å 125.13Å 144.20Å 90.00° 90.00° 90.00°	Depositor
Resolution (Å)	39.28 – 2.60 39.28 – 2.58	Depositor EDS
% Data completeness (in resolution range)	98.0 (39.28-2.60) 91.6 (39.28-2.58)	Depositor EDS
R_{merge}	(Not available)	Depositor
R_{sym}	0.09	Depositor
$\langle I/\sigma(I) \rangle$ ¹	1.90 (at 2.58Å)	Xtriage
Refinement program	PHENIX (phenix.refine: 1.8.1_1168)	Depositor
R, R_{free}	0.201 , 0.247 0.201 , 0.250	Depositor DCC
R_{free} test set	1644 reflections (5.06%)	wwPDB-VP
Wilson B-factor (Å ²)	53.2	Xtriage
Anisotropy	0.488	Xtriage
Bulk solvent k_{sol} (e/Å ³), B_{sol} (Å ²)	0.31 , 59.7	EDS
L-test for twinning ²	$\langle L \rangle = 0.49$, $\langle L^2 \rangle = 0.33$	Xtriage
Estimated twinning fraction	No twinning to report.	Xtriage
F_o, F_c correlation	0.94	EDS
Total number of atoms	5858	wwPDB-VP
Average B, all atoms (Å ²)	86.0	wwPDB-VP

Xtriage's analysis on translational NCS is as follows: *The largest off-origin peak in the Patterson function is 4.01% of the height of the origin peak. No significant pseudotranslation is detected.*

¹Intensities estimated from amplitudes.

²Theoretical values of $\langle |L| \rangle$, $\langle L^2 \rangle$ for acentric reflections are 0.5, 0.333 respectively for untwinned datasets, and 0.375, 0.2 for perfectly twinned datasets.

5 Model quality [i](#)

5.1 Standard geometry [i](#)

Bond lengths and bond angles in the following residue types are not validated in this section: TPO, CL, EDO, SEP

The Z score for a bond length (or angle) is the number of standard deviations the observed value is removed from the expected value. A bond length (or angle) with $|Z| > 5$ is considered an outlier worth inspection. RMSZ is the root-mean-square of all Z scores of the bond lengths (or angles).

Mol	Chain	Bond lengths		Bond angles	
		RMSZ	$\# Z > 5$	RMSZ	$\# Z > 5$
1	A	0.25	0/2757	0.47	0/3756
2	H	0.23	0/1537	0.40	0/2105
3	L	0.23	0/1388	0.46	1/1893 (0.1%)
4	V	0.16	0/76	0.40	0/95
All	All	0.24	0/5758	0.45	1/7849 (0.0%)

There are no bond length outliers.

All (1) bond angle outliers are listed below:

Mol	Chain	Res	Type	Atoms	Z	Observed(°)	Ideal(°)
3	L	139	ASN	N-CA-C	5.42	125.65	111.00

There are no chirality outliers.

There are no planarity outliers.

5.2 Too-close contacts [i](#)

In the following table, the Non-H and H(model) columns list the number of non-hydrogen atoms and hydrogen atoms in the chain respectively. The H(added) column lists the number of hydrogen atoms added and optimized by MolProbity. The Clashes column lists the number of clashes within the asymmetric unit, whereas Symm-Clashes lists symmetry related clashes.

Mol	Chain	Non-H	H(model)	H(added)	Clashes	Symm-Clashes
1	A	2698	0	2689	36	0
2	H	1496	0	1364	8	0
3	L	1359	0	1268	13	0
4	V	163	0	103	3	0
5	A	1	0	0	0	0
5	H	1	0	0	0	0

Continued on next page...

Continued from previous page...

Mol	Chain	Non-H	H(model)	H(added)	Clashes	Symm-Clashes
6	A	4	0	6	2	0
6	H	12	0	18	0	0
6	L	8	0	12	0	0
7	L	8	0	7	0	0
8	A	69	0	0	3	0
8	H	27	0	0	0	0
8	L	8	0	0	0	0
8	V	4	0	0	0	0
All	All	5858	0	5467	57	0

The all-atom clashscore is defined as the number of clashes found per 1000 atoms (including hydrogen atoms). The all-atom clashscore for this structure is 5.

The worst 5 of 57 close contacts within the same asymmetric unit are listed below, sorted by their clash magnitude.

Atom-1	Atom-2	Interatomic distance (Å)	Clash overlap (Å)
3:L:30:VAL:HG11	3:L:91:GLN:HB2	1.56	0.85
1:A:93:ASP:HB3	1:A:95:LYS:HD3	1.70	0.74
1:A:182:PRO:HG2	1:A:203:LEU:HB2	1.72	0.70
1:A:107:LYS:NZ	4:V:364:SEP:O	2.27	0.66
2:H:65:ASP:OD1	2:H:68:LYS:HE2	1.97	0.64

There are no symmetry-related clashes.

5.3 Torsion angles [i](#)

5.3.1 Protein backbone [i](#)

In the following table, the Percentiles column shows the percent Ramachandran outliers of the chain as a percentile score with respect to all X-ray entries followed by that with respect to entries of similar resolution.

The Analysed column shows the number of residues for which the backbone conformation was analysed, and the total number of residues.

Mol	Chain	Analysed	Favoured	Allowed	Outliers	Percentiles	
1	A	349/401 (87%)	333 (95%)	16 (5%)	0	100	100
2	H	198/237 (84%)	189 (96%)	9 (4%)	0	100	100
3	L	181/215 (84%)	176 (97%)	5 (3%)	0	100	100

Continued on next page...

Continued from previous page...

Mol	Chain	Analysed	Favoured	Allowed	Outliers	Percentiles	
4	V	9/29 (31%)	7 (78%)	2 (22%)	0	100	100
All	All	737/882 (84%)	705 (96%)	32 (4%)	0	100	100

There are no Ramachandran outliers to report.

5.3.2 Protein sidechains ⓘ

In the following table, the Percentiles column shows the percent sidechain outliers of the chain as a percentile score with respect to all X-ray entries followed by that with respect to entries of similar resolution.

The Analysed column shows the number of residues for which the sidechain conformation was analysed, and the total number of residues.

Mol	Chain	Analysed	Rotameric	Outliers	Percentiles	
1	A	292/356 (82%)	288 (99%)	4 (1%)	67	85
2	H	153/200 (76%)	152 (99%)	1 (1%)	84	94
3	L	144/190 (76%)	142 (99%)	2 (1%)	67	85
4	V	7/16 (44%)	7 (100%)	0	100	100
All	All	596/762 (78%)	589 (99%)	7 (1%)	71	87

5 of 7 residues with a non-rotameric sidechain are listed below:

Mol	Chain	Res	Type
1	A	280	ASN
3	L	117	PHE
2	H	68	LYS
1	A	83	ASN
3	L	93	LYS

Some sidechains can be flipped to improve hydrogen bonding and reduce clashes. 5 of 10 such sidechains are listed below:

Mol	Chain	Res	Type
1	A	280	ASN
2	H	31	ASN
3	L	90	GLN
1	A	222	ASN
3	L	28	GLN

5.3.3 RNA ⓘ

There are no RNA molecules in this entry.

5.4 Non-standard residues in protein, DNA, RNA chains ⓘ

8 non-standard protein/DNA/RNA residues are modelled in this entry.

In the following table, the Counts columns list the number of bonds (or angles) for which Mogul statistics could be retrieved, the number of bonds (or angles) that are observed in the model and the number of bonds (or angles) that are defined in the Chemical Component Dictionary. The Link column lists molecule types, if any, to which the group is linked. The Z score for a bond length (or angle) is the number of standard deviations the observed value is removed from the expected value. A bond length (or angle) with $|Z| > 2$ is considered an outlier worth inspection. RMSZ is the root-mean-square of all Z scores of the bond lengths (or angles).

Mol	Type	Chain	Res	Link	Bond lengths			Bond angles		
					Counts	RMSZ	$\# Z > 2$	Counts	RMSZ	$\# Z > 2$
4	TPO	V	359	4	8,10,11	1.19	0	10,14,16	1.19	1 (10%)
4	SEP	V	350	4	8,9,10	1.57	1 (12%)	8,12,14	1.74	2 (25%)
4	SEP	V	364	4	8,9,10	1.54	1 (12%)	8,12,14	1.22	1 (12%)
4	SEP	V	363	4	8,9,10	1.54	1 (12%)	8,12,14	1.61	2 (25%)
4	SEP	V	357	4	8,9,10	1.56	1 (12%)	8,12,14	1.78	2 (25%)
4	SEP	V	362	4	8,9,10	1.58	1 (12%)	8,12,14	2.20	2 (25%)
4	TPO	V	347	4	8,10,11	1.09	0	10,14,16	1.89	1 (10%)
4	TPO	V	360	4	8,10,11	1.11	0	10,14,16	1.73	1 (10%)

In the following table, the Chirals column lists the number of chiral outliers, the number of chiral centers analysed, the number of these observed in the model and the number defined in the Chemical Component Dictionary. Similar counts are reported in the Torsion and Rings columns. '-' means no outliers of that kind were identified.

Mol	Type	Chain	Res	Link	Chirals	Torsions	Rings
4	TPO	V	359	4	-	6/9/11/13	-
4	SEP	V	350	4	-	5/5/8/10	-
4	SEP	V	364	4	-	3/5/8/10	-
4	SEP	V	363	4	-	2/5/8/10	-
4	SEP	V	357	4	-	0/5/8/10	-
4	SEP	V	362	4	-	1/5/8/10	-
4	TPO	V	347	4	-	0/9/11/13	-
4	TPO	V	360	4	-	0/9/11/13	-

All (5) bond length outliers are listed below:

Mol	Chain	Res	Type	Atoms	Z	Observed(Å)	Ideal(Å)
4	V	362	SEP	P-O1P	3.43	1.61	1.50
4	V	357	SEP	P-O1P	3.40	1.61	1.50
4	V	364	SEP	P-O1P	3.39	1.61	1.50
4	V	350	SEP	P-O1P	3.37	1.61	1.50
4	V	363	SEP	P-O1P	3.36	1.61	1.50

The worst 5 of 12 bond angle outliers are listed below:

Mol	Chain	Res	Type	Atoms	Z	Observed(°)	Ideal(°)
4	V	347	TPO	P-OG1-CB	-5.33	107.12	123.21
4	V	360	TPO	P-OG1-CB	-4.91	108.38	123.21
4	V	362	SEP	OG-CB-CA	4.53	112.55	108.14
4	V	362	SEP	P-OG-CB	-3.77	107.90	118.30
4	V	350	SEP	OG-CB-CA	3.50	111.55	108.14

There are no chirality outliers.

5 of 17 torsion outliers are listed below:

Mol	Chain	Res	Type	Atoms
4	V	359	TPO	N-CA-CB-CG2
4	V	359	TPO	N-CA-CB-OG1
4	V	359	TPO	C-CA-CB-CG2
4	V	359	TPO	O-C-CA-CB
4	V	359	TPO	CG2-CB-OG1-P

There are no ring outliers.

2 monomers are involved in 2 short contacts:

Mol	Chain	Res	Type	Clashes	Symm-Clashes
4	V	364	SEP	1	0
4	V	363	SEP	1	0

5.5 Carbohydrates [i](#)

There are no monosaccharides in this entry.

5.6 Ligand geometry [i](#)

Of 9 ligands modelled in this entry, 2 are monoatomic - leaving 7 for Mogul analysis.

In the following table, the Counts columns list the number of bonds (or angles) for which Mogul statistics could be retrieved, the number of bonds (or angles) that are observed in the model and the number of bonds (or angles) that are defined in the Chemical Component Dictionary. The Link column lists molecule types, if any, to which the group is linked. The Z score for a bond length (or angle) is the number of standard deviations the observed value is removed from the expected value. A bond length (or angle) with $|Z| > 2$ is considered an outlier worth inspection. RMSZ is the root-mean-square of all Z scores of the bond lengths (or angles).

Mol	Type	Chain	Res	Link	Bond lengths			Bond angles		
					Counts	RMSZ	$\# Z > 2$	Counts	RMSZ	$\# Z > 2$
6	EDO	A	402	-	3,3,3	0.43	0	2,2,2	0.33	0
6	EDO	L	301	-	3,3,3	0.46	0	2,2,2	0.34	0
6	EDO	H	302	-	3,3,3	0.45	0	2,2,2	0.35	0
6	EDO	H	303	-	3,3,3	0.46	0	2,2,2	0.34	0
6	EDO	L	302	-	3,3,3	0.46	0	2,2,2	0.32	0
6	EDO	H	304	-	3,3,3	0.42	0	2,2,2	0.25	0
7	PRO	L	303	-	5,8,8	0.48	0	6,10,10	1.06	0

In the following table, the Chirals column lists the number of chiral outliers, the number of chiral centers analysed, the number of these observed in the model and the number defined in the Chemical Component Dictionary. Similar counts are reported in the Torsion and Rings columns. '-' means no outliers of that kind were identified.

Mol	Type	Chain	Res	Link	Chirals	Torsions	Rings
6	EDO	A	402	-	-	0/1/1/1	-
6	EDO	L	301	-	-	0/1/1/1	-
6	EDO	H	302	-	-	0/1/1/1	-
6	EDO	H	303	-	-	0/1/1/1	-
6	EDO	L	302	-	-	0/1/1/1	-
6	EDO	H	304	-	-	1/1/1/1	-
7	PRO	L	303	-	-	0/0/11/11	0/1/1/1

There are no bond length outliers.

There are no bond angle outliers.

There are no chirality outliers.

All (1) torsion outliers are listed below:

Mol	Chain	Res	Type	Atoms
6	H	304	EDO	O1-C1-C2-O2

There are no ring outliers.

1 monomer is involved in 2 short contacts:

Mol	Chain	Res	Type	Clashes	Symm-Clashes
6	A	402	EDO	2	0

5.7 Other polymers [i](#)

There are no such residues in this entry.

5.8 Polymer linkage issues [i](#)

There are no chain breaks in this entry.

6 Fit of model and data [i](#)

6.1 Protein, DNA and RNA chains [i](#)

In the following table, the column labelled ‘#RSRZ> 2’ contains the number (and percentage) of RSRZ outliers, followed by percent RSRZ outliers for the chain as percentile scores relative to all X-ray entries and entries of similar resolution. The OWAB column contains the minimum, median, 95th percentile and maximum values of the occupancy-weighted average B-factor per residue. The column labelled ‘Q< 0.9’ lists the number of (and percentage) of residues with an average occupancy less than 0.9.

Mol	Chain	Analysed	<RSRZ>	#RSRZ>2	OWAB(Å ²)	Q<0.9
1	A	353/401 (88%)	-0.19	3 (0%) 86 84	38, 67, 126, 162	0
2	H	204/237 (86%)	0.23	12 (5%) 22 17	45, 94, 159, 182	0
3	L	185/215 (86%)	0.37	16 (8%) 10 7	58, 102, 156, 178	1 (0%)
4	V	13/29 (44%)	1.10	1 (7%) 13 10	66, 94, 133, 142	0
All	All	755/882 (85%)	0.08	32 (4%) 36 29	38, 80, 148, 182	1 (0%)

The worst 5 of 32 RSRZ outliers are listed below:

Mol	Chain	Res	Type	RSRZ
3	L	149	TRP	5.4
2	H	194	VAL	4.9
3	L	159	ASN	4.0
3	L	136	LEU	3.7
2	H	206	CYS	3.6

6.2 Non-standard residues in protein, DNA, RNA chains [i](#)

In the following table, the Atoms column lists the number of modelled atoms in the group and the number defined in the chemical component dictionary. The B-factors column lists the minimum, median, 95th percentile and maximum values of B factors of atoms in the group. The column labelled ‘Q< 0.9’ lists the number of atoms with occupancy less than 0.9.

Mol	Type	Chain	Res	Atoms	RSCC	RSR	B-factors(Å ²)	Q<0.9
4	TPO	V	347	11/12	0.87	0.16	88,119,144,170	0
4	SEP	V	357	10/11	0.88	0.13	69,91,133,146	0
4	TPO	V	359	11/12	0.92	0.11	77,83,182,184	0
4	SEP	V	364	10/11	0.93	0.16	69,79,95,105	0
4	SEP	V	362	10/11	0.95	0.13	64,71,77,78	0
4	SEP	V	350	10/11	0.95	0.14	63,75,104,128	0
4	SEP	V	363	10/11	0.96	0.14	64,73,84,88	0

Continued on next page...

Continued from previous page...

Mol	Type	Chain	Res	Atoms	RSCC	RSR	B-factors(\AA^2)	Q<0.9
4	TPO	V	360	11/12	0.97	0.12	55,62,75,75	0

6.3 Carbohydrates [i](#)

There are no monosaccharides in this entry.

6.4 Ligands [i](#)

In the following table, the Atoms column lists the number of modelled atoms in the group and the number defined in the chemical component dictionary. The B-factors column lists the minimum, median, 95th percentile and maximum values of B factors of atoms in the group. The column labelled 'Q< 0.9' lists the number of atoms with occupancy less than 0.9.

Mol	Type	Chain	Res	Atoms	RSCC	RSR	B-factors(\AA^2)	Q<0.9
6	EDO	L	302	4/4	0.71	0.39	88,90,98,101	0
6	EDO	H	303	4/4	0.72	0.42	70,96,102,105	0
6	EDO	H	302	4/4	0.79	0.26	72,85,88,101	0
6	EDO	H	304	4/4	0.86	0.38	84,107,118,119	0
5	CL	A	401	1/1	0.87	0.17	84,84,84,84	1
6	EDO	L	301	4/4	0.87	0.20	88,89,90,93	0
5	CL	H	301	1/1	0.90	0.12	86,86,86,86	0
7	PRO	L	303	8/8	0.91	0.38	61,127,150,161	0
6	EDO	A	402	4/4	0.96	0.39	68,90,92,101	0

6.5 Other polymers [i](#)

There are no such residues in this entry.