



Full wwPDB X-ray Structure Validation Report ⓘ

May 25, 2020 – 09:03 am BST

PDB ID : 6JVC
Title : Structure of the Cobalt Protoporphyrin IX-Reconstituted CYP102A1 Haem Domain with N-Abietoyl-L-Tryptophan
Authors : Stanfield, J.K.; Matsumoto, A.; Kasai, C.; Sugimoto, H.; Shiro, Y.; Watanabe, Y.; Shoji, O.
Deposited on : 2019-04-16
Resolution : 1.75 Å(reported)

This is a Full wwPDB X-ray Structure Validation Report for a publicly released PDB entry.

We welcome your comments at validation@mail.wwpdb.org

A user guide is available at

<https://www.wwpdb.org/validation/2017/XrayValidationReportHelp>

with specific help available everywhere you see the ⓘ symbol.

The following versions of software and data (see [references ⓘ](#)) were used in the production of this report:

MolProbity : 4.02b-467
Mogul : 1.8.5 (274361), CSD as541be (2020)
Xtriage (Phenix) : 1.13
EDS : 2.11
buster-report : 1.1.7 (2018)
Percentile statistics : 20191225.v01 (using entries in the PDB archive December 25th 2019)
Refmac : 5.8.0158
CCP4 : 7.0.044 (Gargrove)
Ideal geometry (proteins) : Engh & Huber (2001)
Ideal geometry (DNA, RNA) : Parkinson et al. (1996)
Validation Pipeline (wwPDB-VP) : 2.11

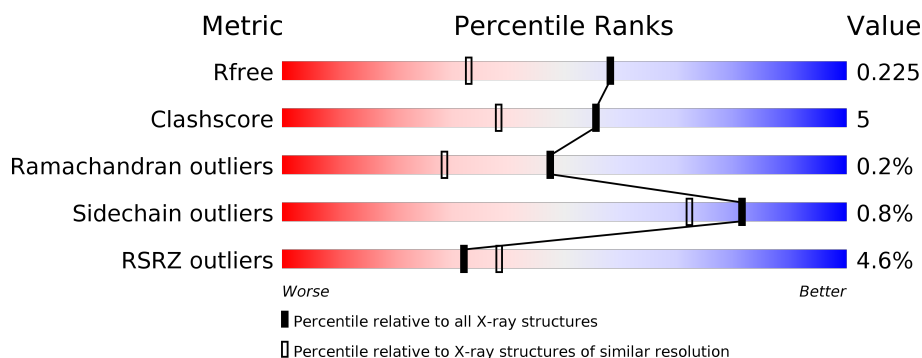
1 Overall quality at a glance

The following experimental techniques were used to determine the structure:

X-RAY DIFFRACTION

The reported resolution of this entry is 1.75 Å.

Percentile scores (ranging between 0-100) for global validation metrics of the entry are shown in the following graphic. The table shows the number of entries on which the scores are based.



Metric	Whole archive (#Entries)	Similar resolution (#Entries, resolution range(Å))
R_{free}	130704	2340 (1.76-1.76)
Clashscore	141614	2466 (1.76-1.76)
Ramachandran outliers	138981	2437 (1.76-1.76)
Sidechain outliers	138945	2437 (1.76-1.76)
RSRZ outliers	127900	2298 (1.76-1.76)

The table below summarises the geometric issues observed across the polymeric chains and their fit to the electron density. The red, orange, yellow and green segments on the lower bar indicate the fraction of residues that contain outliers for ≥ 3 , 2, 1 and 0 types of geometric quality criteria respectively. A grey segment represents the fraction of residues that are not modelled. The numeric value for each fraction is indicated below the corresponding segment, with a dot representing fractions $\leq 5\%$. The upper red bar (where present) indicates the fraction of residues that have poor fit to the electron density. The numeric value is given above the bar.

Mol	Chain	Length	Quality of chain
1	A	456	<div> <div>4%</div> <div>91%</div> <div>9%</div> </div>
1	C	456	<div> <div>5%</div> <div>92%</div> <div>8%</div> </div>

The following table lists non-polymeric compounds, carbohydrate monomers and non-standard residues in protein, DNA, RNA chains that are outliers for geometric or electron-density-fit criteria:

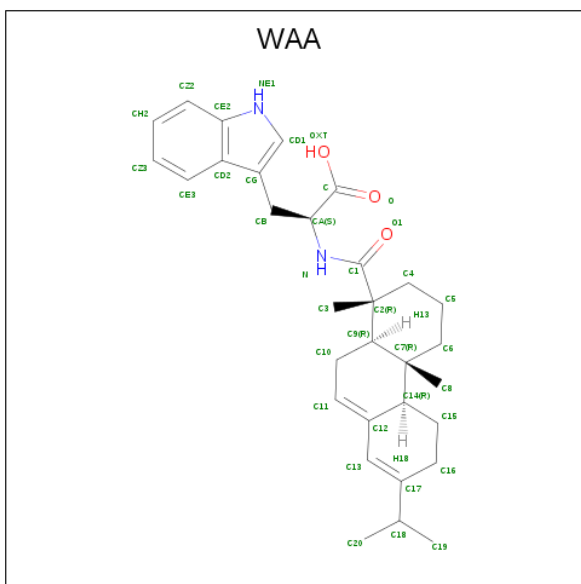
Mol	Type	Chain	Res	Chirality	Geometry	Clashes	Electron density
3	GOL	C	509	-	-	X	-
5	DMS	A	513	-	-	X	-

In the tables below, the ZeroOcc column contains the number of atoms modelled with zero occupancy, the AltConf column contains the number of residues with at least one atom in alternate conformation and the Trace column contains the number of residues modelled with at most 2 atoms.

- Molecule 1 is a protein called Bifunctional cytochrome P450/NADPH-P450 reductase.

Mol	Chain	Residues	Atoms					ZeroOcc	AltConf	Trace
1	A	454	Total 3795	C 2416	N 644	O 716	S 19	0	17	0
1	C	455	Total 3804	C 2422	N 649	O 715	S 18	0	17	0

- Molecule 2 is (2S)-2-[[[(1R,4aR,4bR,10aR)-1,4a-dimethyl-7-propan-2-yl-2,3,4,4b,5,6,10,10a-octahydrophenanthren-1-yl]carbonylamino]-3-(1H-indol-3-yl)propanoic acid (three-letter code: WAA) (formula: C₃₁H₄₀N₂O₃) (labeled as "Ligand of Interest" by author).



Mol	Chain	Residues	Atoms				ZeroOcc	AltConf
2	A	1	Total 36	C 31	N 2	O 3	0	0
2	C	1	Total 36	C 31	N 2	O 3	0	0

- Molecule 3 is GLYCEROL (three-letter code: GOL) (formula: $C_3H_8O_3$).



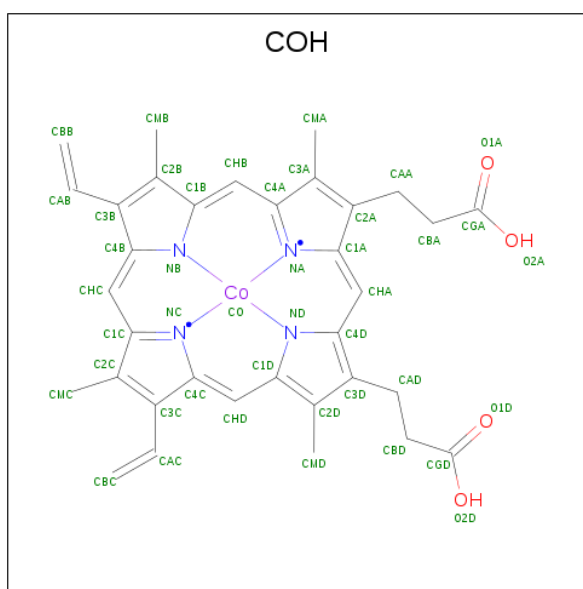
Mol	Chain	Residues	Atoms			ZeroOcc	AltConf
3	A	1	Total	C	O	0	0
			6	3	3		
3	A	1	Total	C	O	0	0
			6	3	3		
3	A	1	Total	C	O	0	0
			6	3	3		
3	A	1	Total	C	O	0	0
			6	3	3		
3	A	1	Total	C	O	0	0
			6	3	3		
3	A	1	Total	C	O	0	0
			6	3	3		
3	A	1	Total	C	O	0	0
			6	3	3		
3	A	1	Total	C	O	0	1
			12	6	6		
3	C	1	Total	C	O	0	0
			6	3	3		
3	C	1	Total	C	O	0	1
			12	6	6		
3	C	1	Total	C	O	0	0
			6	3	3		
3	C	1	Total	C	O	0	0
			6	3	3		

Continued on next page...

Continued from previous page...

Mol	Chain	Residues	Atoms			ZeroOcc	AltConf
3	C	1	Total	C	O	0	0
			6	3	3		
3	C	1	Total	C	O	0	0
			6	3	3		
3	C	1	Total	C	O	0	0
			6	3	3		
3	C	1	Total	C	O	0	0
			6	3	3		
3	C	1	Total	C	O	0	0
			6	3	3		
3	C	1	Total	C	O	0	1
			12	6	6		
3	C	1	Total	C	O	0	1
			12	6	6		

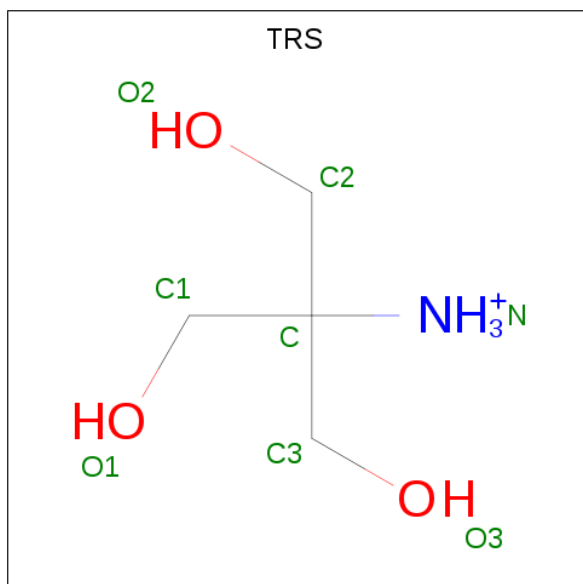
- Molecule 4 is PROTOPORPHYRIN IX CONTAINING CO (three-letter code: COH) (formula: $C_{34}H_{32}CoN_4O_4$) (labeled as "Ligand of Interest" by author).





Mol	Chain	Residues	Atoms				ZeroOcc	AltConf
5	A	1	Total	C	O	S	0	0
			4	2	1	1		
5	C	1	Total	C	O	S	0	0
			4	2	1	1		

- Molecule 6 is 2-AMINO-2-HYDROXYMETHYL-PROPANE-1,3-DIOL (three-letter code: TRS) (formula: $C_4H_{12}NO_3$).



Mol	Chain	Residues	Atoms				ZeroOcc	AltConf
6	C	1	Total	C	N	O	0	0
			8	4	1	3		

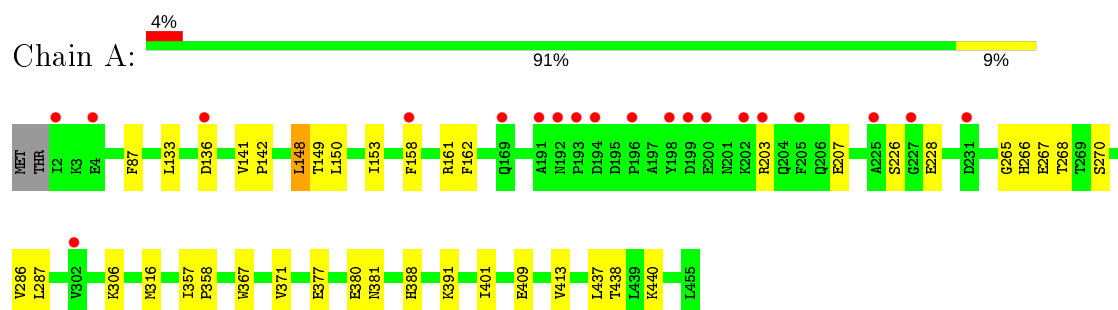
- Molecule 7 is water.

Mol	Chain	Residues	Atoms		ZeroOcc	AltConf
7	A	301	Total 301	O 301	0	0
7	C	278	Total 278	O 278	0	0

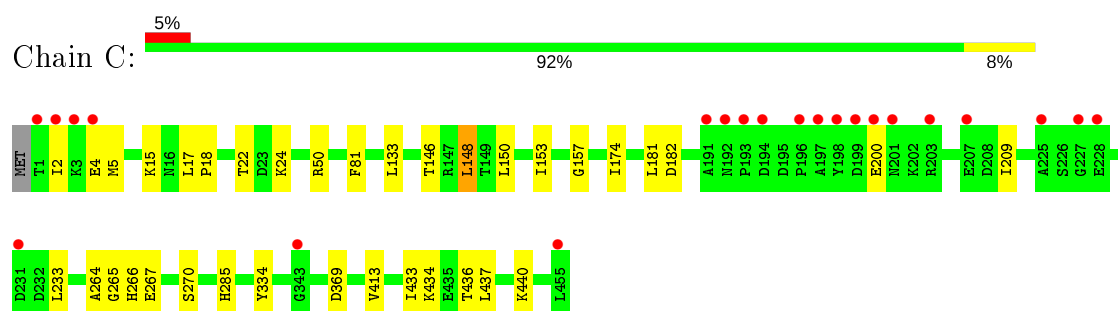
3 Residue-property plots [i](#)

These plots are drawn for all protein, RNA and DNA chains in the entry. The first graphic for a chain summarises the proportions of the various outlier classes displayed in the second graphic. The second graphic shows the sequence view annotated by issues in geometry and electron density. Residues are color-coded according to the number of geometric quality criteria for which they contain at least one outlier: green = 0, yellow = 1, orange = 2 and red = 3 or more. A red dot above a residue indicates a poor fit to the electron density ($RSRZ > 2$). Stretches of 2 or more consecutive residues without any outlier are shown as a green connector. Residues present in the sample, but not in the model, are shown in grey.

- Molecule 1: Bifunctional cytochrome P450/NADPH-P450 reductase



- Molecule 1: Bifunctional cytochrome P450/NADPH-P450 reductase



4 Data and refinement statistics

Property	Value	Source
Space group	P 1 21 1	Depositor
Cell constants a, b, c, α , β , γ	58.90 Å 148.25 Å 63.22 Å 90.00° 98.02° 90.00°	Depositor
Resolution (Å)	47.87 – 1.75 47.83 – 1.75	Depositor EDS
% Data completeness (in resolution range)	99.8 (47.87-1.75) 99.8 (47.83-1.75)	Depositor EDS
R_{merge}	0.12	Depositor
R_{sym}	(Not available)	Depositor
$\langle I/\sigma(I) \rangle$ ¹	1.48 (at 1.75 Å)	Xtriage
Refinement program	REFMAC 5.8.0238	Depositor
R, R_{free}	0.186 , 0.220 0.195 , 0.225	Depositor DCC
R_{free} test set	5319 reflections (4.95%)	wwPDB-VP
Wilson B-factor (Å ²)	26.6	Xtriage
Anisotropy	0.083	Xtriage
Bulk solvent k_{sol} (e/Å ³), B_{sol} (Å ²)	0.36 , 40.7	EDS
L-test for twinning ²	$\langle L \rangle = 0.50$, $\langle L^2 \rangle = 0.33$	Xtriage
Estimated twinning fraction	No twinning to report.	Xtriage
F_o, F_c correlation	0.96	EDS
Total number of atoms	8594	wwPDB-VP
Average B, all atoms (Å ²)	29.0	wwPDB-VP

Xtriage's analysis on translational NCS is as follows: *The largest off-origin peak in the Patterson function is 5.69% of the height of the origin peak. No significant pseudotranslation is detected.*

¹Intensities estimated from amplitudes.

²Theoretical values of $\langle |L| \rangle$, $\langle L^2 \rangle$ for acentric reflections are 0.5, 0.333 respectively for untwinned datasets, and 0.375, 0.2 for perfectly twinned datasets.

5 Model quality

5.1 Standard geometry

Bond lengths and bond angles in the following residue types are not validated in this section: GOL, TRS, DMS, WAA, COH

The Z score for a bond length (or angle) is the number of standard deviations the observed value is removed from the expected value. A bond length (or angle) with $|Z| > 5$ is considered an outlier worth inspection. RMSZ is the root-mean-square of all Z scores of the bond lengths (or angles).

Mol	Chain	Bond lengths		Bond angles	
		RMSZ	# Z >5	RMSZ	# Z >5
1	A	0.73	0/3881	0.83	0/5247
1	C	0.76	0/3890	0.82	0/5256
All	All	0.74	0/7771	0.83	0/10503

There are no bond length outliers.

There are no bond angle outliers.

There are no chirality outliers.

There are no planarity outliers.

5.2 Too-close contacts

In the following table, the Non-H and H(model) columns list the number of non-hydrogen atoms and hydrogen atoms in the chain respectively. The H(added) column lists the number of hydrogen atoms added and optimized by MolProbity. The Clashes column lists the number of clashes within the asymmetric unit, whereas Symm-Clashes lists symmetry related clashes.

Mol	Chain	Non-H	H(model)	H(added)	Clashes	Symm-Clashes
1	A	3795	0	3738	35	0
1	C	3804	0	3763	35	0
2	A	36	0	0	0	0
2	C	36	0	0	1	0
3	A	66	0	88	4	0
3	C	90	0	120	11	0
4	A	86	0	60	7	0
4	C	86	0	60	4	0
5	A	4	0	6	4	0
5	C	4	0	6	1	0
6	C	8	0	12	1	0

Continued on next page...

Continued from previous page...

Mol	Chain	Non-H	H(model)	H(added)	Clashes	Symm-Clashes
7	A	301	0	0	3	0
7	C	278	0	0	3	0
All	All	8594	0	7853	81	0

The all-atom clashscore is defined as the number of clashes found per 1000 atoms (including hydrogen atoms). The all-atom clashscore for this structure is 5.

All (81) close contacts within the same asymmetric unit are listed below, sorted by their clash magnitude.

Atom-1	Atom-2	Interatomic distance (Å)	Clash overlap (Å)
1:C:285:HIS:ND1	3:C:509:GOL:H12	1.80	0.97
4:C:514[A]:COH:HMC1	4:C:514[A]:COH:HBC1	1.55	0.89
1:C:285:HIS:ND1	3:C:509:GOL:C1	2.39	0.85
4:A:512[A]:COH:HBB1	4:A:512[A]:COH:HMB1	1.60	0.83
3:A:504:GOL:H32	7:A:687:HOH:O	1.81	0.80
1:C:133:LEU:O	6:C:516:TRS:H11	1.89	0.72
4:C:514[A]:COH:HMB1	4:C:514[A]:COH:HBB1	1.70	0.72
1:C:181:LEU:HD22	1:C:437:LEU:HD13	1.73	0.70
4:A:512[A]:COH:HMC1	4:A:512[A]:COH:HBC1	1.71	0.70
4:A:512[B]:COH:HMC1	4:A:512[B]:COH:HBC1	1.77	0.65
1:A:268[A]:THR:HG22	1:A:438[A]:THR:CG2	2.27	0.64
1:A:287[B]:LEU:O	1:A:287[B]:LEU:HD23	2.00	0.61
1:A:87:PHE:CE2	5:A:513:DMS:H13	2.35	0.61
1:A:381[A]:ASN:ND2	7:A:601:HOH:O	2.20	0.61
1:C:15:LYS:NZ	7:C:601:HOH:O	2.34	0.60
1:A:388:HIS:HA	1:A:391:LYS:HD3	1.82	0.59
4:C:514[B]:COH:HBB1	4:C:514[B]:COH:HMB1	1.85	0.59
1:C:440:LYS:HD3	7:C:725:HOH:O	2.03	0.58
1:C:267[B]:GLU:HA	1:C:270[B]:SER:CB	2.35	0.56
1:C:267[B]:GLU:HA	1:C:270[B]:SER:HB3	1.87	0.56
1:A:367:TRP:HB2	1:A:371:VAL:HG12	1.87	0.56
1:A:268[A]:THR:HG22	1:A:438[A]:THR:HG22	1.88	0.56
4:C:514[B]:COH:HMC1	4:C:514[B]:COH:HBC1	1.87	0.55
4:A:512[B]:COH:HBB1	4:A:512[B]:COH:HMB1	1.86	0.55
1:C:267[A]:GLU:OE2	3:C:505:GOL:H2	2.06	0.55
1:C:434:LYS:HD3	1:C:440:LYS:NZ	2.22	0.54
1:C:81:PHE:HB3	1:C:209:ILE:HG12	1.88	0.54
1:A:158:PHE:CD1	1:A:158:PHE:N	2.77	0.52
1:A:87:PHE:CD1	5:A:513:DMS:H11	2.44	0.52
1:A:401:ILE:HG22	4:A:512[B]:COH:HMD2	1.91	0.52
1:A:148:LEU:HD21	1:A:413:VAL:HG21	1.90	0.52

Continued on next page...

Continued from previous page...

Atom-1	Atom-2	Interatomic distance (Å)	Clash overlap (Å)
1:A:161:ARG:NH2	3:A:507:GOL:H12	2.25	0.52
1:C:153:ILE:HG21	1:C:265[A]:GLY:HA3	1.92	0.52
1:A:153:ILE:HG21	1:A:265[A]:GLY:HA3	1.92	0.52
1:C:146:THR:N	1:C:270[B]:SER:OG	2.43	0.52
1:A:268[A]:THR:HG22	1:A:438[A]:THR:HG21	1.93	0.51
4:A:512[A]:COH:HBB1	4:A:512[A]:COH:CMB	2.34	0.51
1:C:267[A]:GLU:OE1	1:C:437:LEU:HB3	2.12	0.50
1:C:200:GLU:OE1	1:C:200:GLU:HA	2.13	0.49
1:C:334:TYR:CZ	3:C:504:GOL:H11	2.48	0.49
1:A:267[A]:GLU:OE1	1:A:437:LEU:HB3	2.12	0.49
1:A:267[B]:GLU:HA	1:A:270:SER:OG	2.13	0.48
1:C:182[B]:ASP:OD1	3:C:505:GOL:O1	2.30	0.48
1:A:150:LEU:C	1:A:150:LEU:HD13	2.35	0.47
1:A:226:SER:OG	1:A:228:GLU:HG3	2.14	0.47
1:A:287[B]:LEU:C	1:A:287[B]:LEU:HD23	2.34	0.47
1:A:316:MET:CE	1:A:380:GLU:HG3	2.45	0.47
1:C:5:MET:SD	1:C:50:ARG:HG2	2.55	0.47
1:C:150:LEU:HD21	1:C:174:ILE:HG13	1.95	0.47
1:C:150:LEU:HD11	1:C:174:ILE:HD11	1.97	0.47
1:A:286:VAL:HG22	3:A:503:GOL:H32	1.96	0.46
1:A:316:MET:HE1	1:A:380:GLU:HG3	1.97	0.46
1:A:87:PHE:CZ	5:A:513:DMS:H13	2.50	0.46
1:A:149:THR:HA	1:A:409:GLU:OE2	2.15	0.45
1:A:150:LEU:CD1	1:A:162:PHE:CD2	3.01	0.44
1:A:87:PHE:CD2	5:A:513:DMS:H13	2.52	0.44
1:C:4:GLU:HG3	1:C:5:MET:N	2.33	0.44
1:C:285:HIS:ND1	3:C:509:GOL:H11	2.29	0.44
3:C:510:GOL:C1	7:C:754:HOH:O	2.66	0.44
1:A:316:MET:CE	1:A:377:GLU:HA	2.46	0.44
1:A:150:LEU:O	1:A:150:LEU:HD13	2.17	0.44
1:A:203:ARG:NH1	1:A:207:GLU:OE1	2.51	0.44
1:C:437:LEU:HG	2:C:501:WAA:C19	2.47	0.44
1:C:285:HIS:CE1	3:C:509:GOL:C1	2.99	0.43
1:A:136:ASP:N	1:A:136:ASP:OD1	2.48	0.43
1:C:285:HIS:CE1	3:C:509:GOL:H12	2.51	0.43
1:C:153:ILE:O	1:C:157:GLY:N	2.51	0.43
1:C:436:THR:HG21	3:C:505:GOL:H32	2.00	0.42
1:C:150:LEU:CD2	1:C:174:ILE:HG13	2.50	0.42
1:C:264[B]:ALA:HB2	5:C:515:DMS:H22	2.02	0.41
1:C:157:GLY:HA2	1:C:233:LEU:HD12	2.02	0.41
1:A:440:LYS:HB3	7:A:792:HOH:O	2.19	0.41

Continued on next page...

Continued from previous page...

Atom-1	Atom-2	Interatomic distance (Å)	Clash overlap (Å)
1:C:17:LEU:HB3	1:C:18:PRO:HD3	2.02	0.41
1:A:141:VAL:HB	1:A:142:PRO:HD3	2.02	0.41
1:C:267[B]:GLU:HA	1:C:270[B]:SER:HB2	2.02	0.41
1:A:357:ILE:N	1:A:358:PRO:CD	2.84	0.41
1:C:24:LYS:HE2	1:C:433:ILE:O	2.20	0.41
1:A:133:LEU:O	3:A:508:GOL:H12	2.21	0.41
1:C:285:HIS:CE1	3:C:509:GOL:H11	2.57	0.40
1:A:401:ILE:CG2	4:A:512[B]:COH:HMD2	2.50	0.40
1:C:148:LEU:HD21	1:C:413:VAL:HG21	2.03	0.40

There are no symmetry-related clashes.

5.3 Torsion angles [i](#)

5.3.1 Protein backbone [i](#)

In the following table, the Percentiles column shows the percent Ramachandran outliers of the chain as a percentile score with respect to all X-ray entries followed by that with respect to entries of similar resolution.

The Analysed column shows the number of residues for which the backbone conformation was analysed, and the total number of residues.

Mol	Chain	Analysed	Favoured	Allowed	Outliers	Percentiles	
1	A	469/456 (103%)	452 (96%)	15 (3%)	2 (0%)	34	17
1	C	470/456 (103%)	455 (97%)	13 (3%)	2 (0%)	34	17
All	All	939/912 (103%)	907 (97%)	28 (3%)	4 (0%)	47	17

All (4) Ramachandran outliers are listed below:

Mol	Chain	Res	Type
1	A	266[A]	HIS
1	A	266[B]	HIS
1	C	266[A]	HIS
1	C	266[B]	HIS

5.3.2 Protein sidechains [i](#)

In the following table, the Percentiles column shows the percent sidechain outliers of the chain as a percentile score with respect to all X-ray entries followed by that with respect to entries of similar resolution.

The Analysed column shows the number of residues for which the sidechain conformation was analysed, and the total number of residues.

Mol	Chain	Analysed	Rotameric	Outliers	Percentiles	
1	A	413/400 (103%)	411 (100%)	2 (0%)	88	83
1	C	414/400 (104%)	410 (99%)	4 (1%)	76	63
All	All	827/800 (103%)	821 (99%)	6 (1%)	81	75

All (6) residues with a non-rotameric sidechain are listed below:

Mol	Chain	Res	Type
1	A	148	LEU
1	A	306	LYS
1	C	2	ILE
1	C	22	THR
1	C	148	LEU
1	C	369	ASP

Some sidechains can be flipped to improve hydrogen bonding and reduce clashes. There are no such sidechains identified.

5.3.3 RNA [i](#)

There are no RNA molecules in this entry.

5.4 Non-standard residues in protein, DNA, RNA chains [i](#)

There are no non-standard protein/DNA/RNA residues in this entry.

5.5 Carbohydrates [i](#)

There are no carbohydrates in this entry.

5.6 Ligand geometry [i](#)

35 ligands are modelled in this entry.

In the following table, the Counts columns list the number of bonds (or angles) for which Mogul statistics could be retrieved, the number of bonds (or angles) that are observed in the model and the number of bonds (or angles) that are defined in the Chemical Component Dictionary. The Link column lists molecule types, if any, to which the group is linked. The Z score for a bond length (or angle) is the number of standard deviations the observed value is removed from the expected value. A bond length (or angle) with $|Z| > 2$ is considered an outlier worth inspection. RMSZ is the root-mean-square of all Z scores of the bond lengths (or angles).

Mol	Type	Chain	Res	Link	Bond lengths			Bond angles		
					Counts	RMSZ	$\# Z > 2$	Counts	RMSZ	$\# Z > 2$
3	GOL	A	507	-	5,5,5	0.14	0	5,5,5	0.37	0
3	GOL	C	508	-	5,5,5	0.14	0	5,5,5	0.27	0
3	GOL	C	504	-	5,5,5	0.20	0	5,5,5	0.55	0
4	COH	A	512[A]	5	31,50,50	3.97	19 (61%)	23,82,82	5.77	16 (69%)
3	GOL	C	512[A]	-	5,5,5	0.11	0	5,5,5	0.29	0
3	GOL	A	505	-	5,5,5	0.09	0	5,5,5	0.21	0
3	GOL	C	512[B]	-	5,5,5	0.09	0	5,5,5	0.28	0
4	COH	A	512[B]	5	31,50,50	4.16	17 (54%)	23,82,82	5.70	15 (65%)
3	GOL	C	506	-	5,5,5	0.28	0	5,5,5	0.60	0
5	DMS	C	515	4	3,3,3	0.42	0	3,3,3	0.36	0
3	GOL	C	503[A]	-	5,5,5	0.15	0	5,5,5	0.42	0
3	GOL	C	510	-	5,5,5	0.11	0	5,5,5	0.32	0
3	GOL	A	508	-	5,5,5	0.09	0	5,5,5	0.22	0
3	GOL	A	503	-	5,5,5	0.09	0	5,5,5	0.35	0
3	GOL	C	503[B]	-	5,5,5	0.18	0	5,5,5	0.43	0
3	GOL	C	513[A]	-	5,5,5	0.09	0	5,5,5	0.28	0
3	GOL	A	506	-	5,5,5	0.13	0	5,5,5	0.33	0
3	GOL	A	502	-	5,5,5	0.14	0	5,5,5	0.41	0
3	GOL	A	510	-	5,5,5	0.10	0	5,5,5	0.38	0
3	GOL	A	504	-	5,5,5	0.10	0	5,5,5	0.23	0
3	GOL	A	511[B]	-	5,5,5	0.12	0	5,5,5	0.20	0
3	GOL	C	509	-	5,5,5	0.25	0	5,5,5	0.73	0
2	WAA	C	501	-	36,40,40	1.12	2 (5%)	41,61,61	1.54	8 (19%)
3	GOL	A	509	-	5,5,5	0.10	0	5,5,5	0.35	0
3	GOL	C	505	-	5,5,5	0.15	0	5,5,5	0.53	0
3	GOL	A	511[A]	-	5,5,5	0.11	0	5,5,5	0.29	0
3	GOL	C	511	-	5,5,5	0.12	0	5,5,5	0.39	0
3	GOL	C	513[B]	-	5,5,5	0.10	0	5,5,5	0.27	0
3	GOL	C	502	-	5,5,5	0.12	0	5,5,5	0.35	0
6	TRS	C	516	-	7,7,7	0.21	0	9,9,9	0.59	0
3	GOL	C	507	-	5,5,5	0.10	0	5,5,5	0.35	0
5	DMS	A	513	4	3,3,3	0.33	0	3,3,3	0.57	0
4	COH	C	514[A]	5	31,50,50	4.08	19 (61%)	23,82,82	5.68	17 (73%)
2	WAA	A	501	-	36,40,40	1.16	2 (5%)	41,61,61	1.32	8 (19%)

Mol	Type	Chain	Res	Link	Bond lengths			Bond angles		
					Counts	RMSZ	# Z > 2	Counts	RMSZ	# Z > 2
4	COH	C	514[B]	5	31,50,50	4.21	16 (51%)	23,82,82	5.65	15 (65%)

In the following table, the Chirals column lists the number of chiral outliers, the number of chiral centers analysed, the number of these observed in the model and the number defined in the Chemical Component Dictionary. Similar counts are reported in the Torsion and Rings columns. '-' means no outliers of that kind were identified.

Mol	Type	Chain	Res	Link	Chirals	Torsions	Rings
3	GOL	A	507	-	-	2/4/4/4	-
3	GOL	C	508	-	-	0/4/4/4	-
3	GOL	C	504	-	-	2/4/4/4	-
4	COH	A	512[A]	5	-	0/8/94/94	-
3	GOL	C	512[A]	-	-	1/4/4/4	-
3	GOL	A	505	-	-	0/4/4/4	-
3	GOL	C	512[B]	-	-	2/4/4/4	-
4	COH	A	512[B]	5	-	0/8/94/94	-
3	GOL	C	506	-	-	2/4/4/4	-
3	GOL	C	503[A]	-	-	4/4/4/4	-
3	GOL	C	510	-	-	4/4/4/4	-
3	GOL	A	508	-	-	3/4/4/4	-
3	GOL	A	503	-	-	3/4/4/4	-
3	GOL	C	503[B]	-	-	2/4/4/4	-
3	GOL	C	513[A]	-	-	4/4/4/4	-
3	GOL	A	506	-	-	2/4/4/4	-
3	GOL	A	502	-	-	2/4/4/4	-
3	GOL	A	510	-	-	1/4/4/4	-
3	GOL	A	504	-	-	2/4/4/4	-
3	GOL	A	511[B]	-	-	1/4/4/4	-
3	GOL	C	509	-	-	4/4/4/4	-
2	WAA	C	501	-	-	4/17/66/66	0/5/5/5
3	GOL	A	509	-	-	3/4/4/4	-
3	GOL	C	505	-	-	1/4/4/4	-
3	GOL	A	511[A]	-	-	2/4/4/4	-
3	GOL	C	511	-	-	2/4/4/4	-
3	GOL	C	513[B]	-	-	2/4/4/4	-
3	GOL	C	502	-	-	2/4/4/4	-
6	TRS	C	516	-	-	0/9/9/9	-
3	GOL	C	507	-	-	4/4/4/4	-

Continued on next page...

Continued from previous page...

Mol	Type	Chain	Res	Link	Chirals	Torsions	Rings
4	COH	C	514[A]	5	-	0/8/94/94	-
2	WAA	A	501	-	-	4/17/66/66	0/5/5/5
4	COH	C	514[B]	5	-	0/8/94/94	-

All (75) bond length outliers are listed below:

Mol	Chain	Res	Type	Atoms	Z	Observed(Å)	Ideal(Å)
4	C	514[B]	COH	C3A-C2A	12.37	1.44	1.34
4	A	512[B]	COH	C3A-C2A	11.76	1.43	1.34
4	A	512[A]	COH	C3A-C2A	11.48	1.43	1.34
4	C	514[A]	COH	C3A-C2A	11.36	1.43	1.34
4	C	514[A]	COH	C1B-C2B	9.55	1.51	1.38
4	A	512[A]	COH	C1B-C2B	8.67	1.50	1.38
4	A	512[B]	COH	C1B-C2B	8.20	1.49	1.38
4	C	514[A]	COH	C4D-C3D	7.60	1.48	1.38
4	A	512[A]	COH	C4D-C3D	7.26	1.48	1.38
4	A	512[B]	COH	C4D-C3D	7.25	1.48	1.38
4	C	514[B]	COH	C1B-C2B	7.10	1.47	1.38
4	C	514[B]	COH	C4D-C3D	6.91	1.47	1.38
4	C	514[A]	COH	C1D-C2D	6.88	1.47	1.38
4	C	514[B]	COH	C1D-C2D	6.48	1.47	1.38
4	C	514[B]	COH	CHD-C4C	-6.48	1.42	1.53
4	A	512[B]	COH	C1D-C2D	6.35	1.46	1.38
4	A	512[B]	COH	C4D-ND	6.08	1.37	1.34
4	A	512[B]	COH	CHD-C4C	-5.73	1.43	1.53
4	A	512[B]	COH	CHA-C1A	-5.72	1.43	1.53
4	C	514[B]	COH	C1B-NB	5.68	1.37	1.34
4	A	512[A]	COH	C1D-C2D	5.59	1.45	1.38
4	C	514[B]	COH	C4D-ND	5.50	1.37	1.34
4	A	512[A]	COH	CHD-C4C	-5.47	1.43	1.53
4	C	514[B]	COH	CHA-C1A	-5.30	1.44	1.53
4	C	514[B]	COH	CHB-C4A	-5.12	1.44	1.53
4	A	512[B]	COH	CHC-C1C	-4.99	1.44	1.53
4	A	512[B]	COH	CHB-C4A	-4.98	1.44	1.53
4	C	514[A]	COH	C1B-NB	4.91	1.36	1.34
4	A	512[A]	COH	CHC-C1C	-4.89	1.44	1.53
4	A	512[A]	COH	CHB-C4A	-4.70	1.45	1.53
4	A	512[A]	COH	CHA-C1A	-4.65	1.45	1.53
4	C	514[A]	COH	CHB-C4A	-4.54	1.45	1.53
4	C	514[B]	COH	CHC-C1C	-4.26	1.45	1.53
4	C	514[A]	COH	CHC-C1C	-4.16	1.46	1.53
4	A	512[B]	COH	C1D-ND	4.10	1.36	1.34

Continued on next page...

Continued from previous page...

Mol	Chain	Res	Type	Atoms	Z	Observed(Å)	Ideal(Å)
4	C	514[B]	COH	C2C-C3C	4.06	1.45	1.35
4	C	514[A]	COH	C4C-C3C	-3.97	1.45	1.51
4	C	514[B]	COH	C1D-ND	3.95	1.36	1.34
4	C	514[A]	COH	CHA-C1A	-3.90	1.46	1.53
2	A	501	WAA	C13-C17	3.84	1.40	1.34
4	C	514[A]	COH	CHD-C4C	-3.82	1.46	1.53
4	A	512[A]	COH	C1D-ND	-3.66	1.32	1.34
4	A	512[B]	COH	C2C-C3C	3.62	1.44	1.35
4	C	514[B]	COH	C4B-NB	3.53	1.36	1.34
4	C	514[A]	COH	C3B-C2B	3.53	1.45	1.40
4	A	512[B]	COH	C1B-NB	3.38	1.36	1.34
4	C	514[A]	COH	CHB-C1B	-3.34	1.43	1.51
4	A	512[A]	COH	CHA-C4D	-3.29	1.43	1.51
4	C	514[A]	COH	C2C-C3C	3.19	1.43	1.35
4	A	512[A]	COH	C2C-C3C	3.19	1.43	1.35
4	C	514[A]	COH	C4D-ND	3.16	1.36	1.34
4	C	514[A]	COH	CHD-C1D	-3.15	1.43	1.51
4	A	512[A]	COH	CHD-C1D	-3.14	1.43	1.51
4	A	512[A]	COH	C4C-C3C	-3.10	1.46	1.51
4	C	514[B]	COH	CHD-C1D	-2.96	1.44	1.51
4	C	514[A]	COH	CHA-C4D	-2.91	1.44	1.51
4	A	512[A]	COH	CHB-C1B	-2.89	1.44	1.51
4	A	512[B]	COH	CHD-C1D	-2.88	1.44	1.51
4	A	512[A]	COH	C4D-ND	2.79	1.35	1.34
4	A	512[A]	COH	C3B-C2B	2.76	1.44	1.40
4	A	512[A]	COH	CHC-C4B	-2.71	1.44	1.51
4	A	512[B]	COH	C3B-C2B	2.64	1.44	1.40
4	A	512[B]	COH	CHB-C1B	-2.61	1.44	1.51
4	A	512[A]	COH	C4B-NB	2.56	1.35	1.34
4	C	514[A]	COH	C1D-ND	2.56	1.35	1.34
4	A	512[B]	COH	CHA-C4D	-2.53	1.45	1.51
4	C	514[B]	COH	C3B-C2B	2.51	1.43	1.40
2	C	501	WAA	C13-C12	2.45	1.50	1.44
2	A	501	WAA	C13-C12	2.43	1.50	1.44
4	C	514[A]	COH	C3D-C2D	2.24	1.44	1.37
4	A	512[B]	COH	CHC-C4B	-2.22	1.45	1.51
4	C	514[A]	COH	CHC-C4B	-2.11	1.46	1.51
4	C	514[B]	COH	CHA-C4D	-2.09	1.46	1.51
2	C	501	WAA	C13-C17	2.05	1.37	1.34
4	A	512[A]	COH	C3D-C2D	2.03	1.43	1.37

All (79) bond angle outliers are listed below:

Mol	Chain	Res	Type	Atoms	Z	Observed(°)	Ideal(°)
4	A	512[B]	COH	C3C-C4C-NC	11.96	118.23	109.03
4	C	514[B]	COH	C3C-C4C-NC	11.14	117.60	109.03
4	A	512[A]	COH	CHD-C4C-NC	10.79	126.00	110.12
4	A	512[A]	COH	C3C-C4C-NC	9.82	116.59	109.03
4	A	512[A]	COH	CHB-C4A-NA	9.52	124.13	110.12
4	C	514[A]	COH	C3C-C4C-NC	9.49	116.34	109.03
4	C	514[B]	COH	CHD-C4C-NC	9.32	123.84	110.12
4	C	514[B]	COH	CHB-C4A-NA	9.25	123.74	110.12
4	C	514[A]	COH	CHD-C4C-NC	9.25	123.73	110.12
4	A	512[B]	COH	CHA-C1A-NA	9.22	123.69	110.12
4	C	514[A]	COH	CHA-C1A-NA	9.18	123.63	110.12
4	A	512[A]	COH	CHC-C1C-NC	9.03	123.41	110.12
4	C	514[B]	COH	CHA-C1A-NA	8.99	123.34	110.12
4	C	514[A]	COH	CHC-C1C-NC	8.64	122.84	110.12
4	A	512[A]	COH	C3D-C4D-ND	8.56	118.88	109.94
4	C	514[B]	COH	CAD-C3D-C4D	8.55	133.30	127.30
4	A	512[A]	COH	CHA-C1A-NA	8.53	122.68	110.12
4	C	514[A]	COH	CHB-C4A-NA	8.43	122.53	110.12
4	C	514[B]	COH	C3D-C4D-ND	8.39	118.70	109.94
4	C	514[A]	COH	C3D-C4D-ND	8.39	118.69	109.94
4	A	512[A]	COH	CHC-C4B-C3B	-8.27	118.43	129.55
4	A	512[B]	COH	CAD-C3D-C4D	8.24	133.09	127.30
4	A	512[B]	COH	CHB-C4A-NA	8.12	122.08	110.12
4	A	512[B]	COH	CHD-C4C-NC	7.98	121.87	110.12
4	A	512[B]	COH	CHC-C4B-C3B	-7.65	119.27	129.55
4	A	512[B]	COH	C3D-C4D-ND	7.59	117.86	109.94
4	A	512[B]	COH	CHC-C1C-NC	7.50	121.16	110.12
4	C	514[B]	COH	CHC-C4B-C3B	-7.50	119.47	129.55
4	C	514[A]	COH	CHD-C1D-C2D	-7.49	116.48	129.45
4	C	514[A]	COH	CHC-C4B-C3B	-7.00	120.14	129.55
4	A	512[B]	COH	CHD-C1D-C2D	-6.71	117.83	129.45
4	C	514[B]	COH	CHC-C1C-NC	6.61	119.84	110.12
4	A	512[A]	COH	CHD-C1D-C2D	-6.51	118.19	129.45
4	C	514[A]	COH	CHB-C1B-C2B	-6.50	118.20	129.45
4	A	512[B]	COH	CHB-C1B-C2B	-6.44	118.31	129.45
4	C	514[B]	COH	CHD-C1D-C2D	-5.92	119.21	129.45
4	A	512[A]	COH	CHB-C1B-C2B	-5.41	120.09	129.45
4	C	514[B]	COH	CHB-C1B-C2B	-5.35	120.19	129.45
4	C	514[A]	COH	CBA-CAA-C2A	-5.03	105.44	114.35
4	C	514[A]	COH	CAD-C3D-C4D	4.75	130.63	127.30
4	A	512[B]	COH	CBA-CAA-C2A	-4.73	105.98	114.35
4	A	512[A]	COH	CBA-CAA-C2A	-4.48	106.42	114.35
4	A	512[A]	COH	CAD-C3D-C4D	4.27	130.29	127.30

Continued on next page...

Continued from previous page...

Mol	Chain	Res	Type	Atoms	Z	Observed(°)	Ideal(°)
4	C	514[A]	COH	C1D-C2D-C3D	-3.89	101.66	105.81
4	C	514[B]	COH	CBD-CAD-C3D	-3.79	105.50	112.49
4	A	512[A]	COH	C4D-C3D-C2D	-3.78	100.30	105.93
4	C	514[A]	COH	CMA-C3A-C2A	-3.62	123.45	128.33
2	C	501	WAA	C15-C16-C17	-3.62	106.04	112.33
2	C	501	WAA	CA-N-C1	3.62	126.51	121.66
4	C	514[A]	COH	CMB-C2B-C3B	3.62	131.44	124.68
2	C	501	WAA	C5-C6-C7	-3.44	108.89	113.17
4	C	514[A]	COH	CMD-C2D-C3D	3.40	131.34	124.94
4	A	512[B]	COH	CBD-CAD-C3D	-3.16	106.67	112.49
4	A	512[A]	COH	CBD-CAD-C3D	-3.04	106.88	112.49
4	A	512[B]	COH	CMB-C2B-C3B	3.03	130.34	124.68
4	C	514[B]	COH	CMB-C2B-C3B	2.96	130.22	124.68
4	C	514[B]	COH	C1D-C2D-C3D	-2.91	102.71	105.81
2	A	501	WAA	C15-C16-C17	-2.90	107.29	112.33
4	A	512[B]	COH	C1D-C2D-C3D	-2.83	102.80	105.81
4	A	512[A]	COH	C1D-C2D-C3D	-2.72	102.91	105.81
4	C	514[A]	COH	C4D-C3D-C2D	-2.69	101.92	105.93
4	C	514[B]	COH	C4D-C3D-C2D	-2.69	101.92	105.93
4	C	514[B]	COH	CBA-CAA-C2A	-2.66	109.63	114.35
2	C	501	WAA	C6-C7-C14	-2.60	105.25	109.18
4	A	512[A]	COH	CMD-C2D-C3D	2.59	129.82	124.94
4	A	512[A]	COH	CMB-C2B-C3B	2.58	129.51	124.68
2	A	501	WAA	C10-C9-C7	2.52	114.03	110.51
2	A	501	WAA	CB-CA-N	2.50	113.56	109.01
2	C	501	WAA	CB-CA-N	2.50	113.55	109.01
2	C	501	WAA	C7-C14-C12	2.47	116.84	112.29
4	A	512[B]	COH	C4D-C3D-C2D	-2.45	102.28	105.93
4	C	514[A]	COH	CBC-CAC-C3C	-2.43	118.75	127.20
2	A	501	WAA	C6-C7-C9	2.39	110.95	108.02
2	A	501	WAA	CA-N-C1	2.37	124.84	121.66
2	C	501	WAA	CB-CG-CD1	-2.32	125.10	127.97
2	A	501	WAA	C10-C9-C2	-2.23	110.76	113.21
2	A	501	WAA	C9-C10-C11	-2.07	109.15	113.02
2	C	501	WAA	C5-C4-C2	-2.05	109.85	113.17
2	A	501	WAA	CE3-CD2-CE2	2.03	120.85	118.17

There are no chirality outliers.

All (65) torsion outliers are listed below:

Mol	Chain	Res	Type	Atoms
3	A	507	GOL	O1-C1-C2-C3

Continued on next page...

Continued from previous page...

Mol	Chain	Res	Type	Atoms
3	C	506	GOL	C1-C2-C3-O3
3	C	503[A]	GOL	O1-C1-C2-C3
3	C	510	GOL	C1-C2-C3-O3
3	A	508	GOL	C1-C2-C3-O3
3	A	503	GOL	O2-C2-C3-O3
3	A	506	GOL	C1-C2-C3-O3
3	A	506	GOL	O2-C2-C3-O3
3	A	502	GOL	O1-C1-C2-C3
3	C	509	GOL	O1-C1-C2-C3
3	C	509	GOL	C1-C2-C3-O3
3	A	509	GOL	C1-C2-C3-O3
3	C	507	GOL	O1-C1-C2-O2
3	C	507	GOL	O1-C1-C2-C3
3	C	507	GOL	C1-C2-C3-O3
3	C	507	GOL	O2-C2-C3-O3
3	A	509	GOL	O2-C2-C3-O3
3	C	504	GOL	O1-C1-C2-C3
3	C	512[B]	GOL	O1-C1-C2-C3
3	C	503[A]	GOL	C1-C2-C3-O3
3	C	510	GOL	O1-C1-C2-C3
3	A	503	GOL	C1-C2-C3-O3
3	C	503[B]	GOL	O1-C1-C2-C3
3	C	513[A]	GOL	O1-C1-C2-C3
3	C	513[A]	GOL	C1-C2-C3-O3
3	A	504	GOL	C1-C2-C3-O3
3	A	511[B]	GOL	C1-C2-C3-O3
3	A	511[A]	GOL	O1-C1-C2-C3
3	C	511	GOL	O1-C1-C2-C3
3	C	502	GOL	C1-C2-C3-O3
2	C	501	WAA	C-CA-N-C1
3	C	512[B]	GOL	O1-C1-C2-O2
3	C	503[A]	GOL	O1-C1-C2-O2
3	A	508	GOL	O2-C2-C3-O3
3	A	504	GOL	O2-C2-C3-O3
3	C	509	GOL	O2-C2-C3-O3
3	C	502	GOL	O2-C2-C3-O3
3	A	507	GOL	O1-C1-C2-O2
3	C	506	GOL	O2-C2-C3-O3
3	C	510	GOL	O2-C2-C3-O3
3	C	503[B]	GOL	O1-C1-C2-O2
3	C	509	GOL	O1-C1-C2-O2
2	C	501	WAA	CB-CA-N-C1

Continued on next page...

Continued from previous page...

Mol	Chain	Res	Type	Atoms
3	A	503	GOL	O1-C1-C2-O2
3	C	513[A]	GOL	O1-C1-C2-O2
3	A	502	GOL	O1-C1-C2-O2
3	C	511	GOL	O1-C1-C2-O2
3	C	512[A]	GOL	O2-C2-C3-O3
3	C	503[A]	GOL	O2-C2-C3-O3
3	A	511[A]	GOL	O1-C1-C2-O2
3	C	513[B]	GOL	O1-C1-C2-O2
3	C	505	GOL	C1-C2-C3-O3
2	C	501	WAA	O1-C1-C2-C3
2	A	501	WAA	N-C1-C2-C3
3	A	509	GOL	O1-C1-C2-C3
3	A	510	GOL	O2-C2-C3-O3
2	A	501	WAA	C-CA-N-C1
3	A	508	GOL	O1-C1-C2-C3
3	C	513[A]	GOL	O2-C2-C3-O3
3	C	504	GOL	O1-C1-C2-O2
3	C	510	GOL	O1-C1-C2-O2
3	C	513[B]	GOL	O1-C1-C2-C3
2	A	501	WAA	CB-CA-N-C1
2	C	501	WAA	N-C1-C2-C3
2	A	501	WAA	O1-C1-C2-C3

There are no ring outliers.

16 monomers are involved in 33 short contacts:

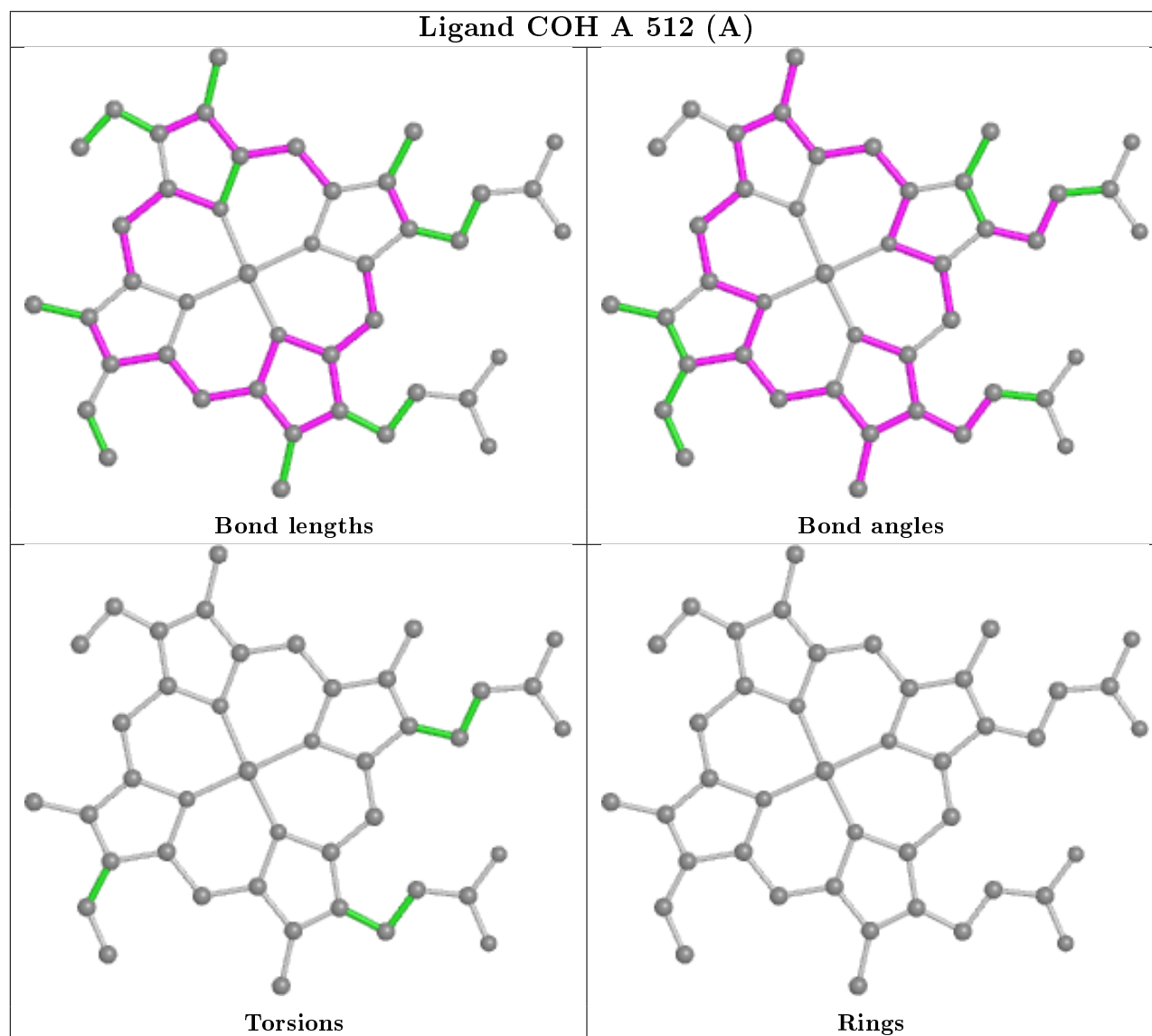
Mol	Chain	Res	Type	Clashes	Symm-Clashes
3	A	507	GOL	1	0
3	C	504	GOL	1	0
4	A	512[A]	COH	3	0
4	A	512[B]	COH	4	0
5	C	515	DMS	1	0
3	C	510	GOL	1	0
3	A	508	GOL	1	0
3	A	503	GOL	1	0
3	A	504	GOL	1	0
3	C	509	GOL	6	0
2	C	501	WAA	1	0
3	C	505	GOL	3	0
6	C	516	TRS	1	0
5	A	513	DMS	4	0
4	C	514[A]	COH	2	0

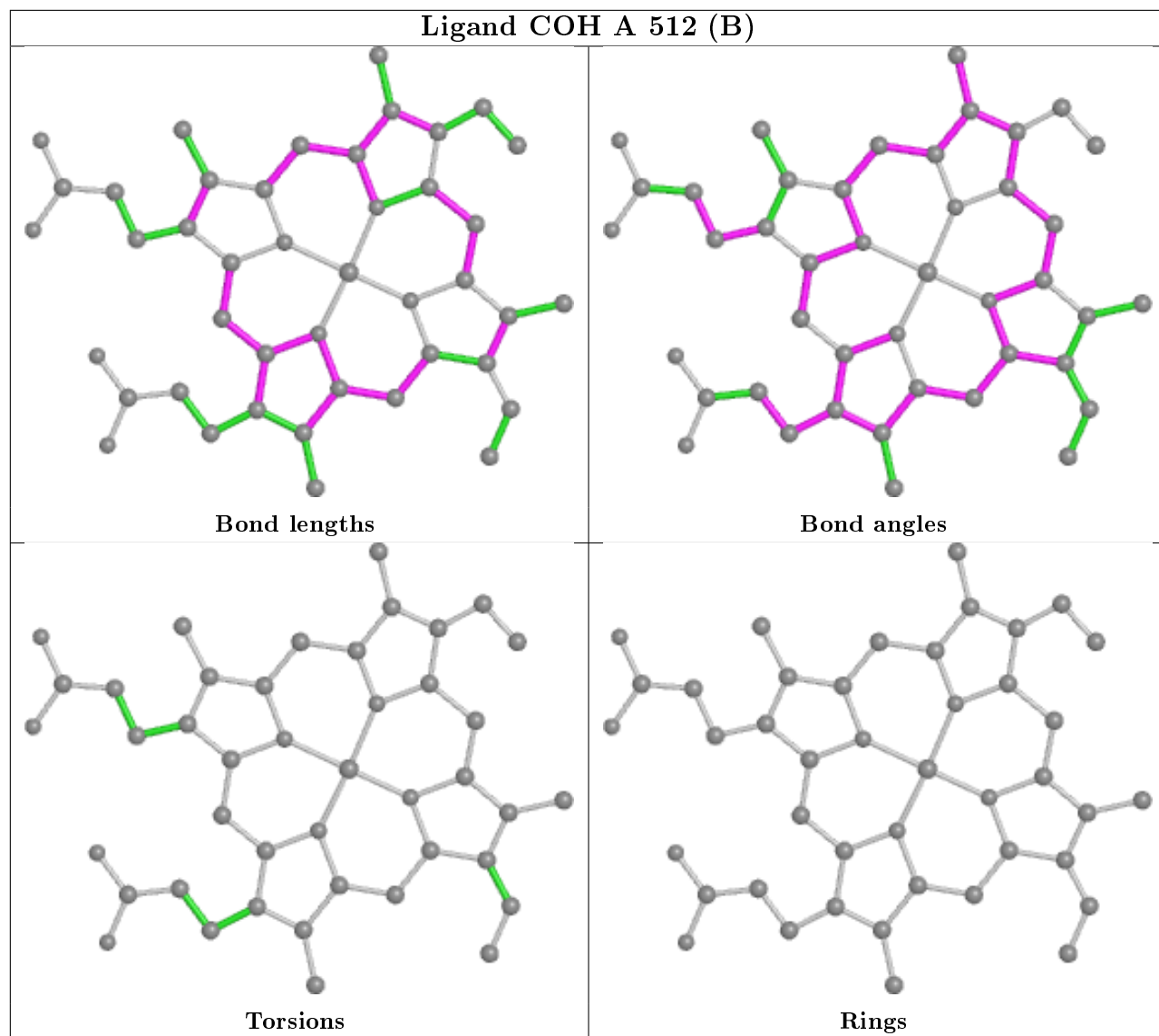
Continued on next page...

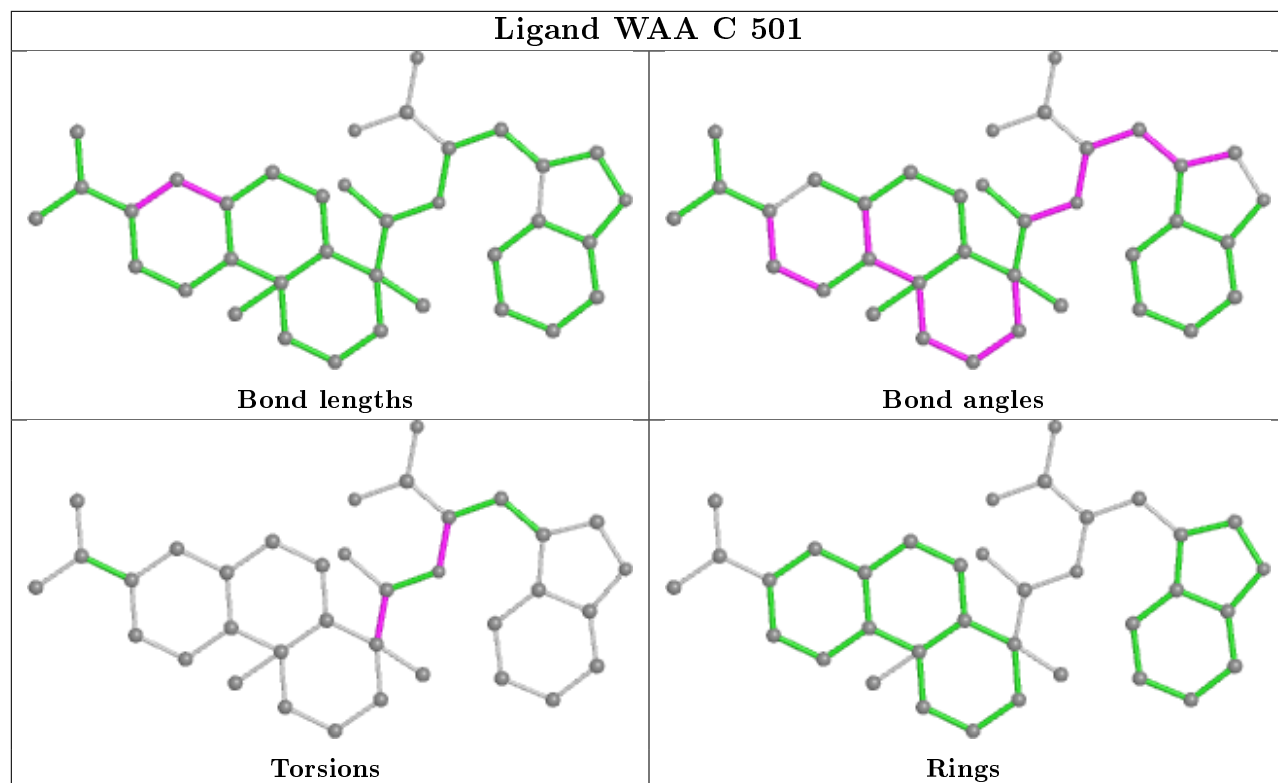
Continued from previous page...

Mol	Chain	Res	Type	Clashes	Symm-Clashes
4	C	514[B]	COH	2	0

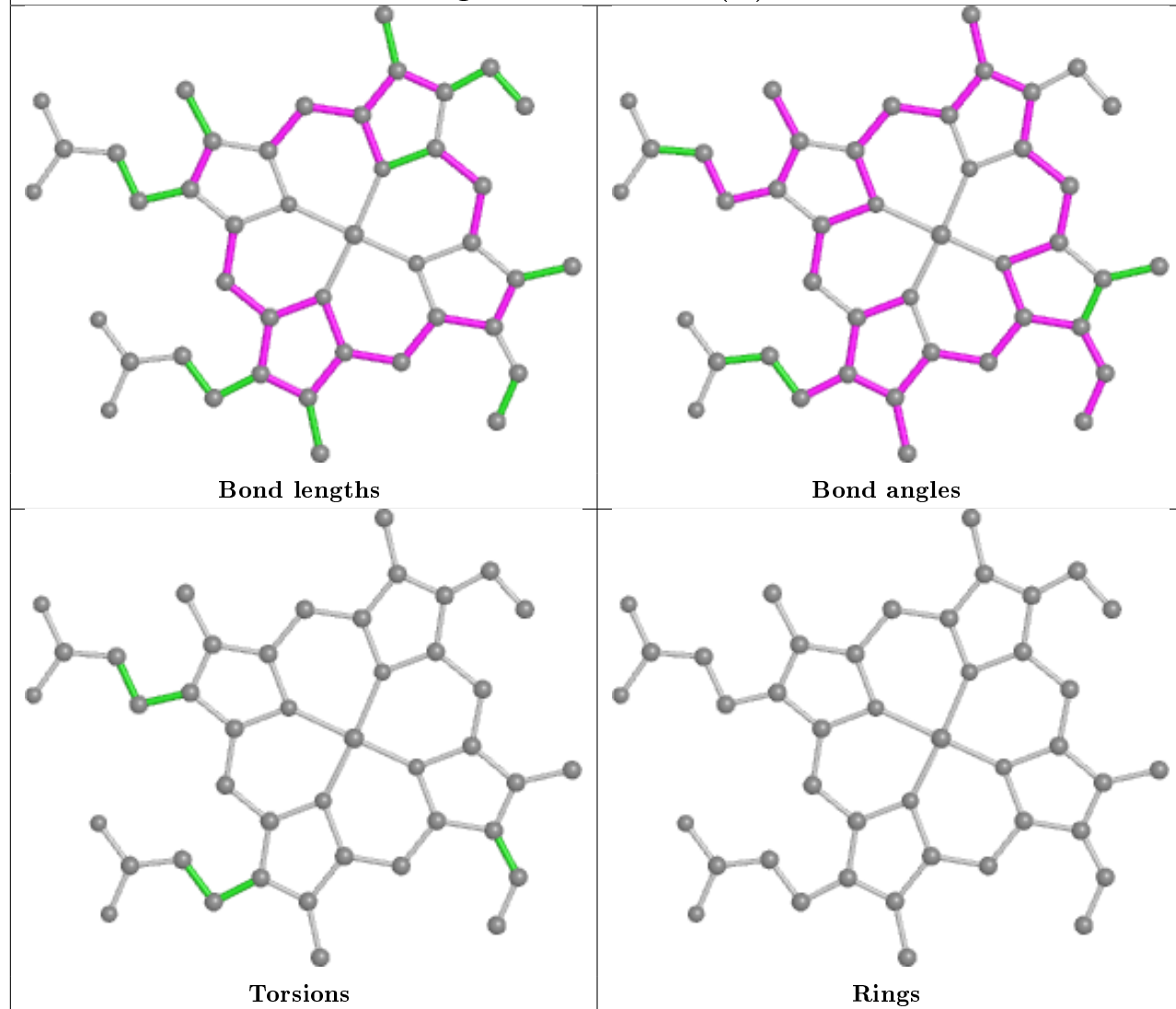
The following is a two-dimensional graphical depiction of Mogul quality analysis of bond lengths, bond angles, torsion angles, and ring geometry for all instances of the Ligand of Interest. In addition, ligands with molecular weight > 250 and outliers as shown on the validation Tables will also be included. For torsion angles, if less than 5% of the Mogul distribution of torsion angles is within 10 degrees of the torsion angle in question, then that torsion angle is considered an outlier. Any bond that is central to one or more torsion angles identified as an outlier by Mogul will be highlighted in the graph. For rings, the root-mean-square deviation (RMSD) between the ring in question and similar rings identified by Mogul is calculated over all ring torsion angles. If the average RMSD is greater than 60 degrees and the minimal RMSD between the ring in question and any Mogul-identified rings is also greater than 60 degrees, then that ring is considered an outlier. The outliers are highlighted in purple. The color gray indicates Mogul did not find sufficient equivalents in the CSD to analyse the geometry.

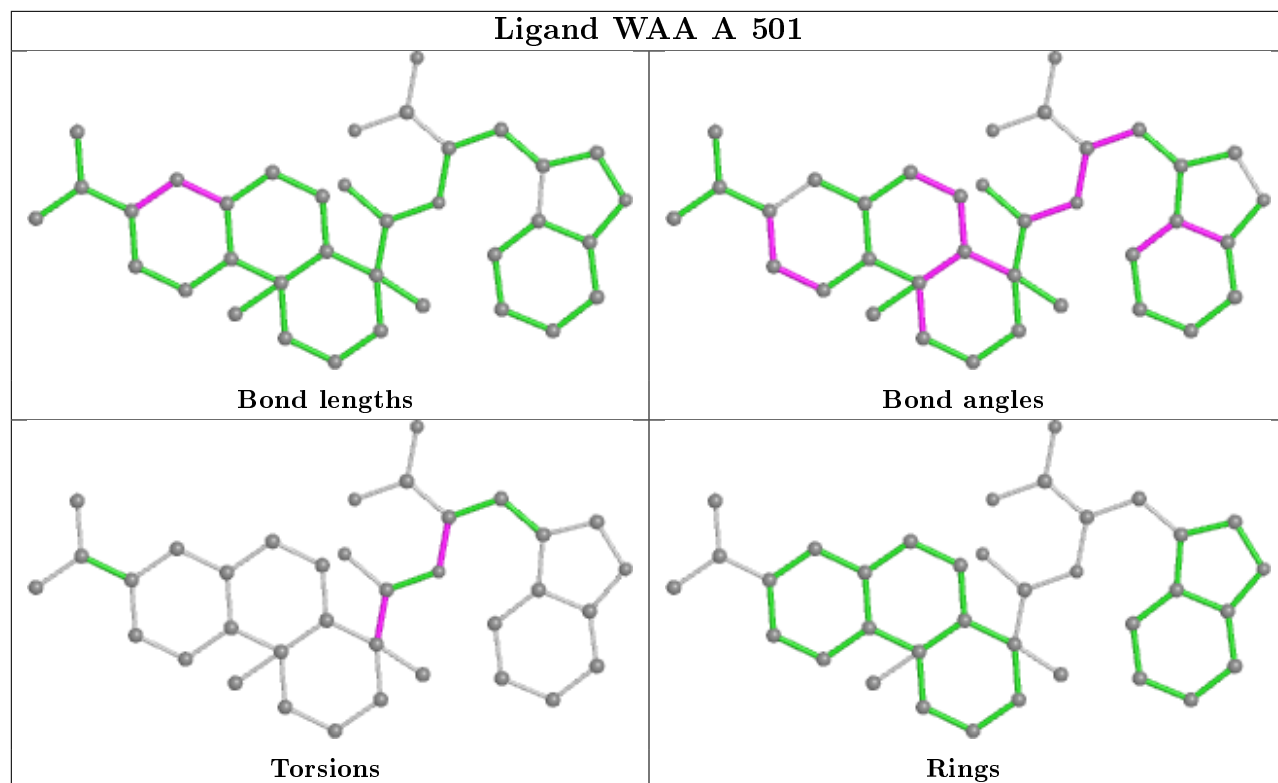


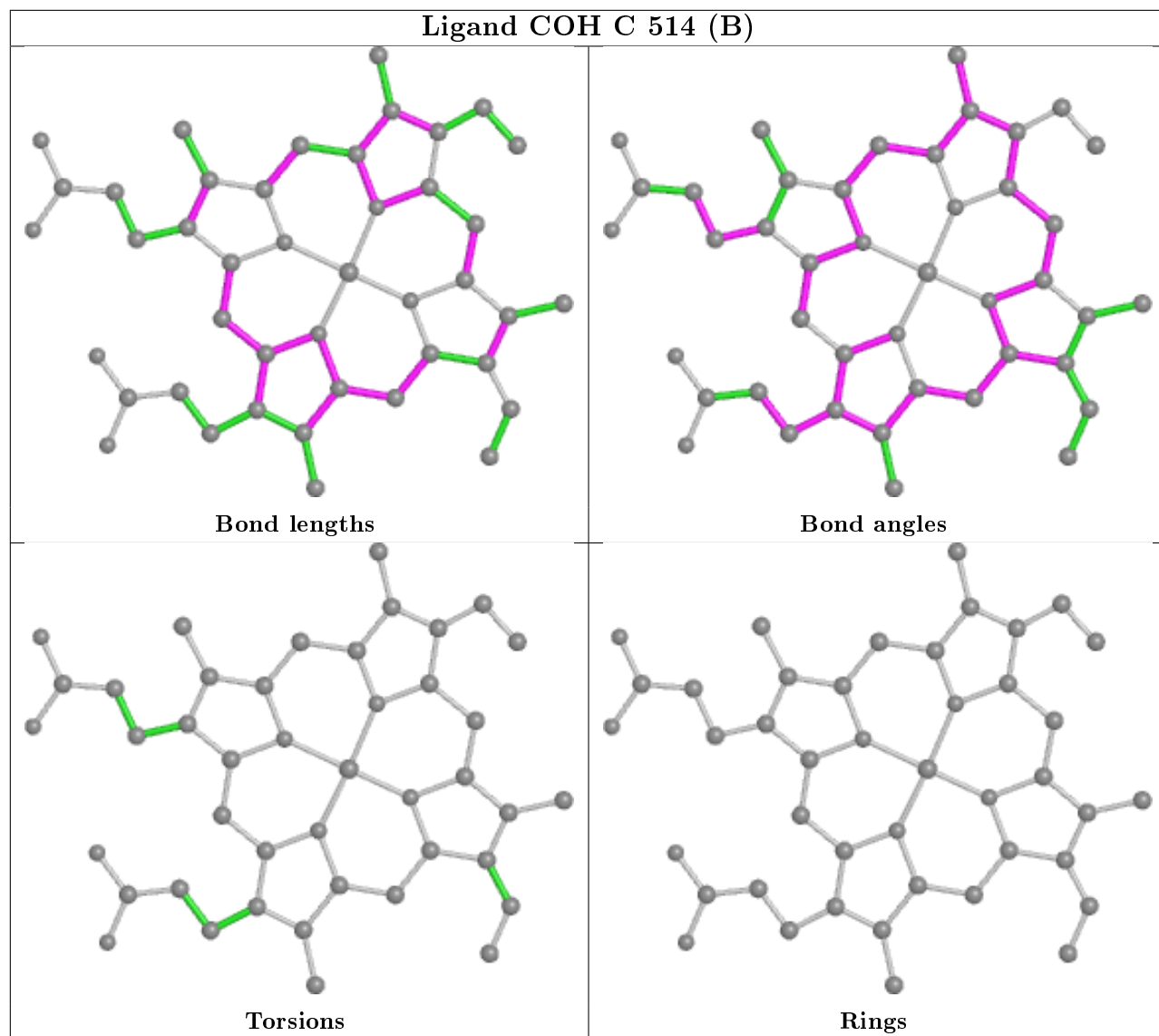




Ligand COH C 514 (A)







5.7 Other polymers [i](#)

There are no such residues in this entry.

5.8 Polymer linkage issues [i](#)

There are no chain breaks in this entry.

6 Fit of model and data

6.1 Protein, DNA and RNA chains

In the following table, the column labelled ‘#RSRZ> 2’ contains the number (and percentage) of RSRZ outliers, followed by percent RSRZ outliers for the chain as percentile scores relative to all X-ray entries and entries of similar resolution. The OWAB column contains the minimum, median, 95th percentile and maximum values of the occupancy-weighted average B-factor per residue. The column labelled ‘Q< 0.9’ lists the number of (and percentage) of residues with an average occupancy less than 0.9.

Mol	Chain	Analysed	<RSRZ>	#RSRZ>2	OWAB(Å ²)	Q<0.9
1	A	454/456 (99%)	0.14	20 (4%) 34 40	18, 26, 49, 67	0
1	C	455/456 (99%)	0.31	22 (4%) 30 36	17, 27, 50, 77	0
All	All	909/912 (99%)	0.22	42 (4%) 32 38	17, 26, 49, 77	0

All (42) RSRZ outliers are listed below:

Mol	Chain	Res	Type	RSRZ
1	C	1	THR	8.1
1	C	2	ILE	7.4
1	C	191	ALA	6.2
1	A	191	ALA	5.7
1	A	196	PRO	5.2
1	C	231	ASP	5.0
1	C	199	ASP	4.9
1	C	196	PRO	4.7
1	A	2	ILE	4.6
1	C	3	LYS	4.2
1	C	4	GLU	4.1
1	A	198	TYR	3.3
1	A	203	ARG	3.3
1	C	203	ARG	3.0
1	C	197	ALA	3.0
1	C	193	PRO	2.9
1	A	302	VAL	2.9
1	C	192	ASN	2.9
1	C	194	ASP	2.8
1	C	198	TYR	2.8
1	A	136	ASP	2.7
1	A	231	ASP	2.6
1	A	4	GLU	2.6
1	C	200	GLU	2.6

Continued on next page...

Continued from previous page...

Mol	Chain	Res	Type	RSRZ
1	C	227	GLY	2.6
1	C	455	LEU	2.6
1	C	207	GLU	2.6
1	A	194	ASP	2.5
1	A	227	GLY	2.4
1	C	225	ALA	2.3
1	A	225	ALA	2.3
1	A	199	ASP	2.3
1	C	228	GLU	2.2
1	A	205	PHE	2.2
1	A	200	GLU	2.2
1	A	158	PHE	2.1
1	A	169	GLN	2.1
1	A	193	PRO	2.1
1	A	202	LYS	2.1
1	A	192	ASN	2.0
1	C	201	ASN	2.0
1	C	343	GLY	2.0

6.2 Non-standard residues in protein, DNA, RNA chains [i](#)

There are no non-standard protein/DNA/RNA residues in this entry.

6.3 Carbohydrates [i](#)

There are no carbohydrates in this entry.

6.4 Ligands [i](#)

In the following table, the Atoms column lists the number of modelled atoms in the group and the number defined in the chemical component dictionary. The B-factors column lists the minimum, median, 95th percentile and maximum values of B factors of atoms in the group. The column labelled 'Q< 0.9' lists the number of atoms with occupancy less than 0.9.

Mol	Type	Chain	Res	Atoms	RSCC	RSR	B-factors(Å ²)	Q<0.9
3	GOL	C	503[A]	6/6	0.49	0.26	56,61,65,67	6
3	GOL	C	503[B]	6/6	0.49	0.26	41,45,47,47	6
3	GOL	A	506	6/6	0.53	0.35	40,59,64,76	0
3	GOL	C	512[B]	6/6	0.66	0.32	59,67,71,72	6
3	GOL	C	512[A]	6/6	0.66	0.32	34,41,43,46	6

Continued on next page...

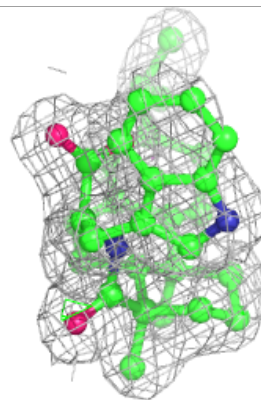
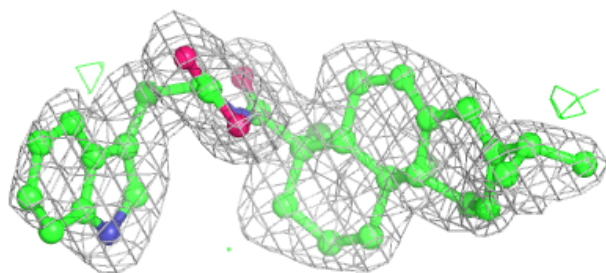
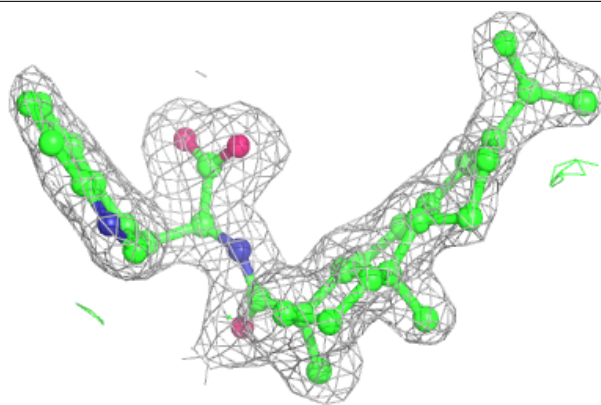
Continued from previous page...

Mol	Type	Chain	Res	Atoms	RSCC	RSR	B-factors(\AA^2)	Q<0.9
3	GOL	C	508	6/6	0.73	0.17	54,56,56,58	0
3	GOL	A	505	6/6	0.74	0.13	56,61,66,66	0
3	GOL	C	510	6/6	0.75	0.17	56,59,60,61	0
3	GOL	C	504	6/6	0.76	0.25	39,51,54,55	0
3	GOL	A	503	6/6	0.77	0.22	38,56,57,65	0
3	GOL	C	506	6/6	0.79	0.17	30,43,44,50	0
3	GOL	C	505	6/6	0.79	0.27	42,55,63,65	0
3	GOL	A	508	6/6	0.81	0.15	50,55,61,66	0
3	GOL	C	513[A]	6/6	0.82	0.17	55,56,58,62	6
3	GOL	C	513[B]	6/6	0.82	0.17	49,50,52,56	6
3	GOL	A	502	6/6	0.83	0.21	34,45,46,50	0
6	TRS	C	516	8/8	0.83	0.14	52,56,60,62	0
3	GOL	A	504	6/6	0.84	0.14	35,50,56,57	0
5	DMS	C	515	4/4	0.84	0.17	33,55,58,63	0
3	GOL	C	509	6/6	0.85	0.14	34,47,49,51	0
3	GOL	C	507	6/6	0.85	0.44	50,58,60,60	0
3	GOL	A	511[A]	6/6	0.86	0.17	49,54,57,58	6
3	GOL	A	511[B]	6/6	0.86	0.17	37,39,39,40	6
3	GOL	C	502	6/6	0.87	0.18	50,53,56,57	0
3	GOL	C	511	6/6	0.88	0.22	39,51,54,57	0
3	GOL	A	507	6/6	0.89	0.16	32,51,58,63	0
3	GOL	A	510	6/6	0.89	0.14	53,55,56,58	0
5	DMS	A	513	4/4	0.89	0.13	36,51,53,61	0
2	WAA	A	501	36/36	0.89	0.13	23,29,42,44	0
3	GOL	A	509	6/6	0.90	0.15	46,51,53,53	0
2	WAA	C	501	36/36	0.90	0.14	25,31,56,58	0
4	COH	C	514[A]	43/43	0.96	0.10	16,18,19,20	43
4	COH	C	514[B]	43/43	0.96	0.10	16,17,20,21	43
4	COH	A	512[B]	43/43	0.97	0.10	17,19,20,21	43
4	COH	A	512[A]	43/43	0.97	0.10	17,18,20,20	43

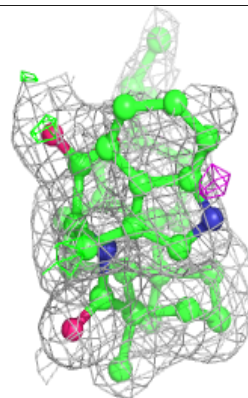
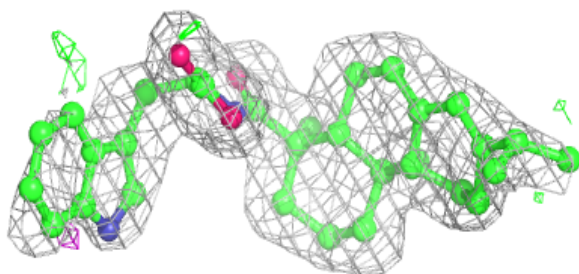
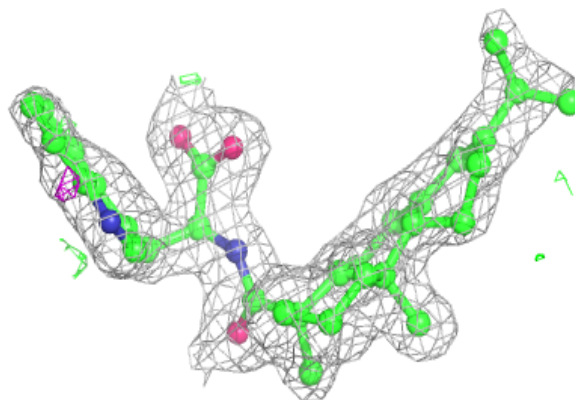
The following is a graphical depiction of the model fit to experimental electron density of all instances of the Ligand of Interest. In addition, ligands with molecular weight > 250 and outliers as shown on the geometry validation Tables will also be included. Each fit is shown from different orientation to approximate a three-dimensional view.

Electron density around WAA A 501:

$2mF_o-DF_c$ (at 0.7 rmsd) in gray
 mF_o-DF_c (at 3 rmsd) in purple (negative)
and green (positive)

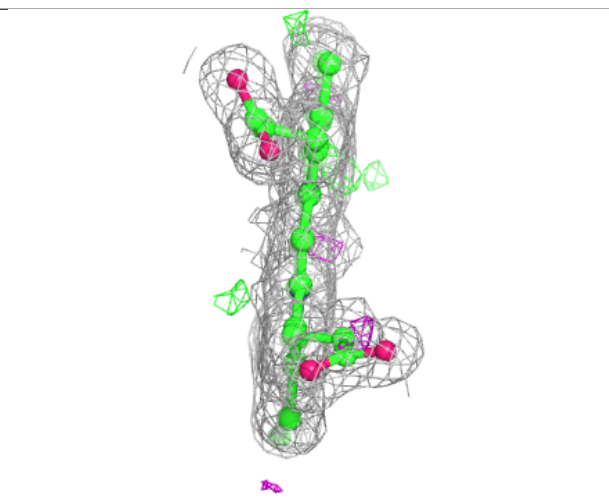
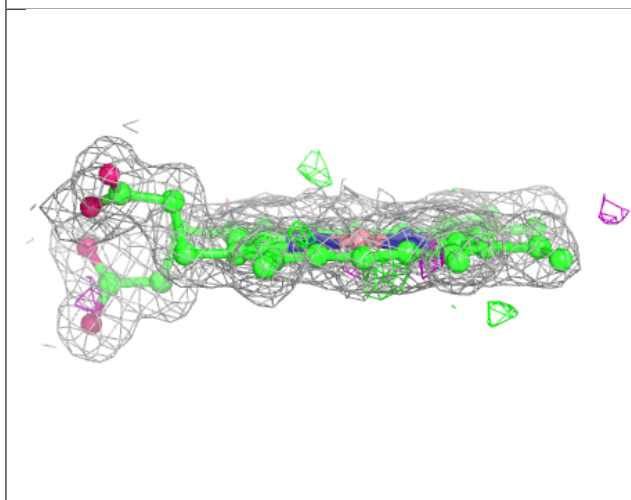
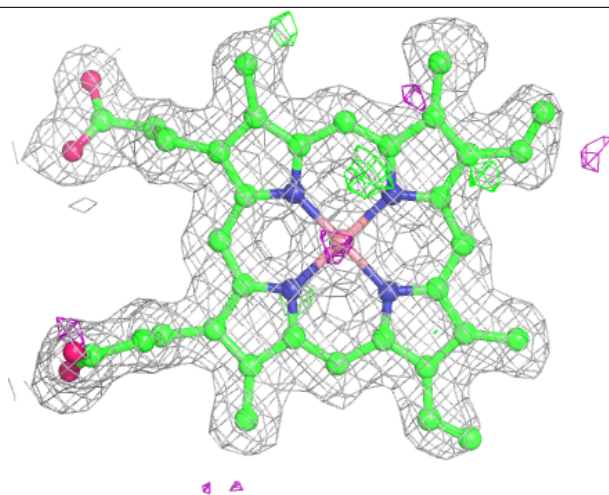
**Electron density around WAA C 501:**

$2mF_o-DF_c$ (at 0.7 rmsd) in gray
 mF_o-DF_c (at 3 rmsd) in purple (negative)
and green (positive)



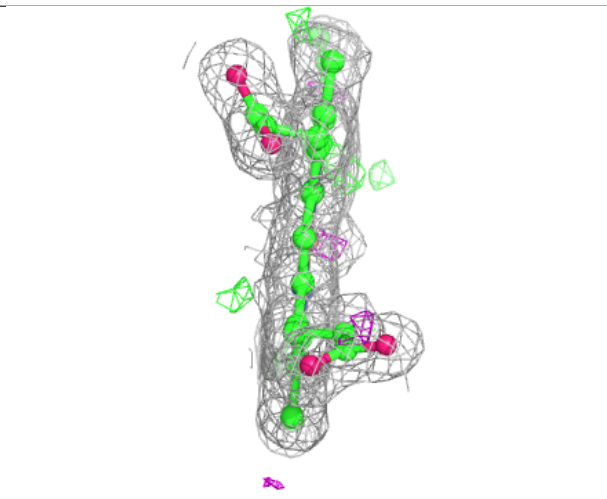
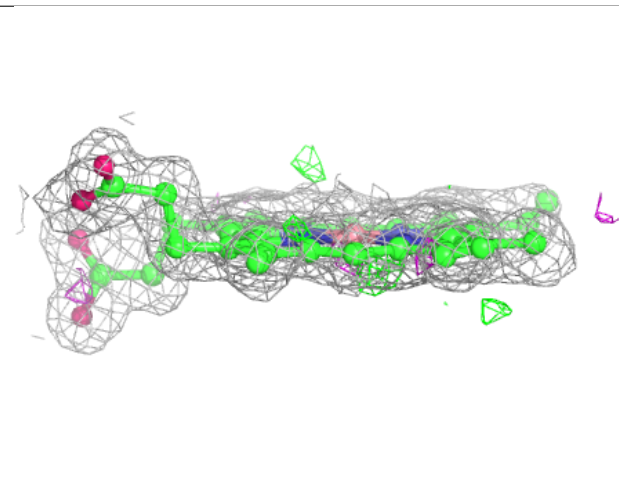
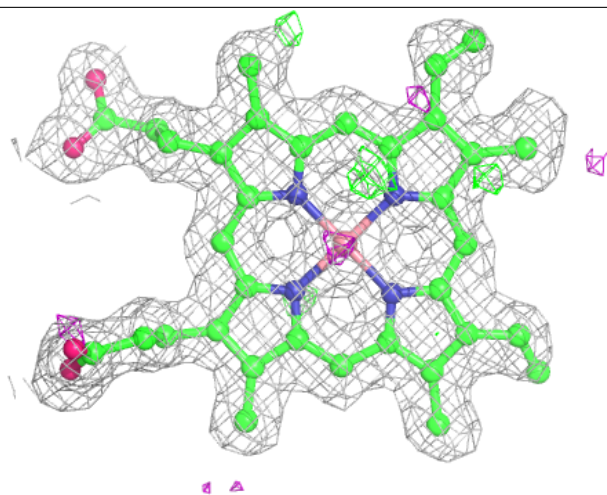
Electron density around COH C 514 (A):

$2mF_o-DF_c$ (at 0.7 rmsd) in gray
 mF_o-DF_c (at 3 rmsd) in purple (negative)
and green (positive)



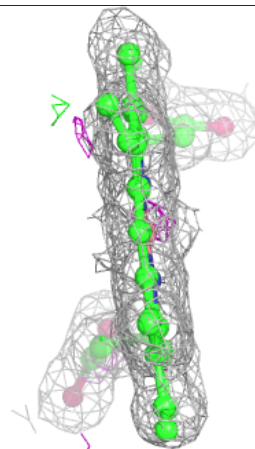
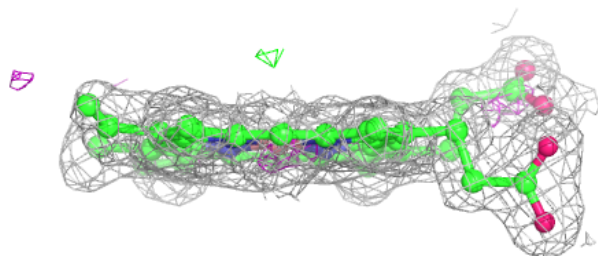
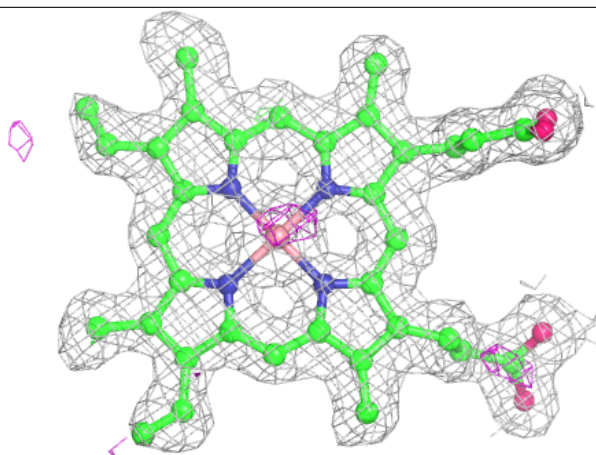
Electron density around COH C 514 (B):

$2mF_o-DF_c$ (at 0.7 rmsd) in gray
 mF_o-DF_c (at 3 rmsd) in purple (negative)
and green (positive)



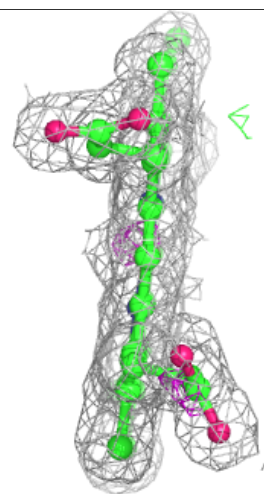
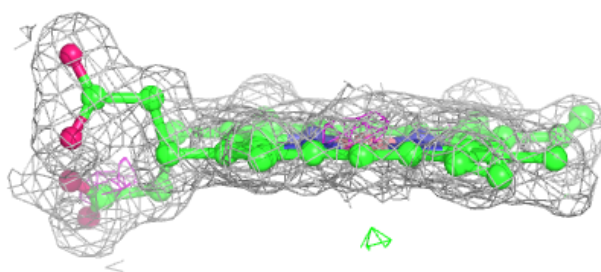
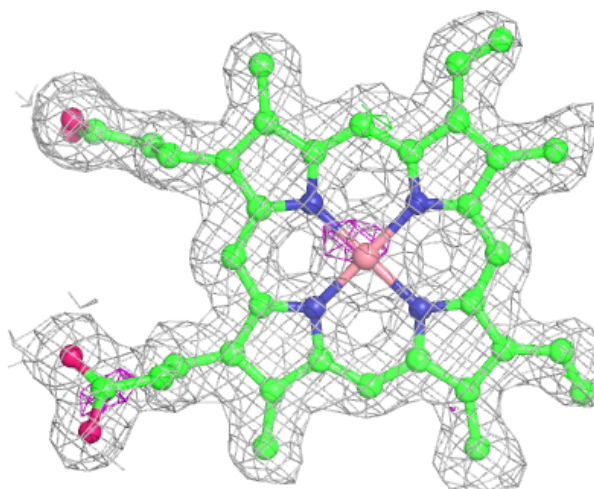
Electron density around COH A 512 (B):

$2mF_o-DF_c$ (at 0.7 rmsd) in gray
 mF_o-DF_c (at 3 rmsd) in purple (negative)
and green (positive)



Electron density around COH A 512 (A):

$2mF_o-DF_c$ (at 0.7 rmsd) in gray
 mF_o-DF_c (at 3 rmsd) in purple (negative)
and green (positive)



6.5 Other polymers [i](#)

There are no such residues in this entry.