



# Full wwPDB X-ray Structure Validation Report ⓘ

Sep 15, 2020 – 12:11 PM EDT

PDB ID : 7JVM  
Title : Non-receptor Protein Tyrosine Phosphatase SHP2 in Complex with Allosteric Inhibitor TNO155  
Authors : Fodor, M.; Stams, T.  
Deposited on : 2020-08-21  
Resolution : 2.17 Å(reported)

This is a Full wwPDB X-ray Structure Validation Report for a publicly released PDB entry.

We welcome your comments at [validation@mail.wwpdb.org](mailto:validation@mail.wwpdb.org)

A user guide is available at

<https://www.wwpdb.org/validation/2017/XrayValidationReportHelp>

with specific help available everywhere you see the ⓘ symbol.

---

The following versions of software and data (see [references ⓘ](#)) were used in the production of this report:

MolProbity : 4.02b-467  
Mogul : 1.8.5 (274361), CSD as541be (2020)  
Xtriage (Phenix) : 1.13  
EDS : 2.14.4  
buster-report : 1.1.7 (2018)  
Percentile statistics : 20191225.v01 (using entries in the PDB archive December 25th 2019)  
Refmac : 5.8.0158  
CCP4 : 7.0.044 (Gargrove)  
Ideal geometry (proteins) : Engh & Huber (2001)  
Ideal geometry (DNA, RNA) : Parkinson et al. (1996)  
Validation Pipeline (wwPDB-VP) : 2.14.4

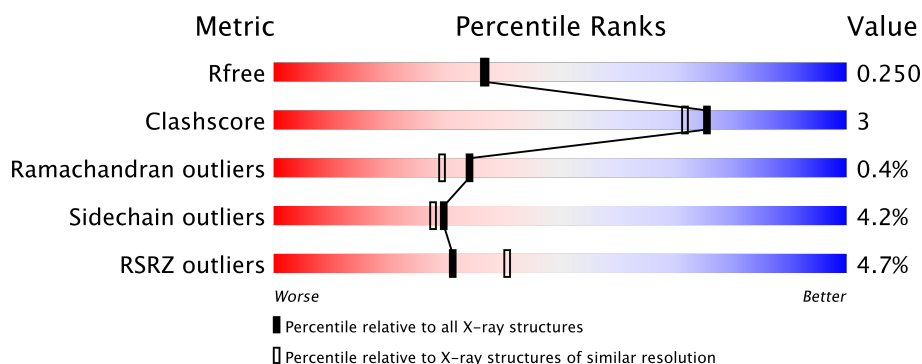
# 1 Overall quality at a glance

The following experimental techniques were used to determine the structure:

*X-RAY DIFFRACTION*

The reported resolution of this entry is 2.17 Å.

Percentile scores (ranging between 0-100) for global validation metrics of the entry are shown in the following graphic. The table shows the number of entries on which the scores are based.



Metric	Whole archive (#Entries)	Similar resolution (#Entries, resolution range(Å))
$R_{free}$	130704	1479 (2.16-2.16)
Clashscore	141614	1585 (2.16-2.16)
Ramachandran outliers	138981	1560 (2.16-2.16)
Sidechain outliers	138945	1559 (2.16-2.16)
RSRZ outliers	127900	1456 (2.16-2.16)

The table below summarises the geometric issues observed across the polymeric chains and their fit to the electron density. The red, orange, yellow and green segments on the lower bar indicate the fraction of residues that contain outliers for  $\geq 3$ , 2, 1 and 0 types of geometric quality criteria respectively. A grey segment represents the fraction of residues that are not modelled. The numeric value for each fraction is indicated below the corresponding segment, with a dot representing fractions  $\leq 5\%$ . The upper red bar (where present) indicates the fraction of residues that have poor fit to the electron density. The numeric value is given above the bar.

Mol	Chain	Length	Quality of chain
1	A	525	<div> <div>5%</div> <div> <div></div> <div>81%</div> <div>12%</div> <div>7%</div> </div> </div>
1	B	525	<div> <div>4%</div> <div> <div></div> <div>82%</div> <div>9%</div> <div>9%</div> </div> </div>

## 2 Entry composition [i](#)

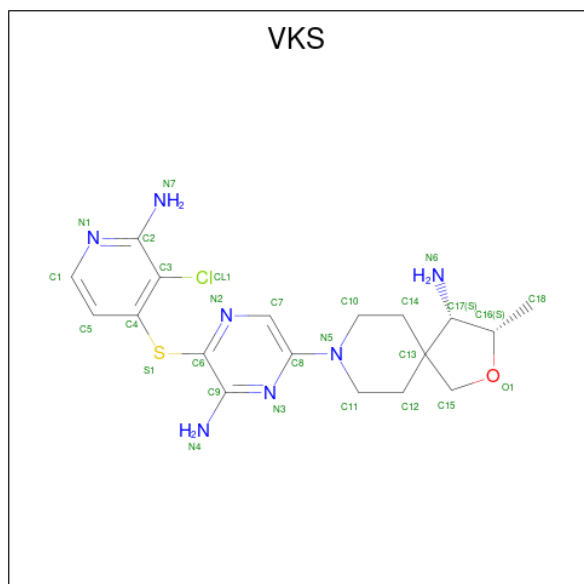
There are 4 unique types of molecules in this entry. The entry contains 8254 atoms, of which 0 are hydrogens and 0 are deuteriums.

In the tables below, the ZeroOcc column contains the number of atoms modelled with zero occupancy, the AltConf column contains the number of residues with at least one atom in alternate conformation and the Trace column contains the number of residues modelled with at most 2 atoms.

- Molecule 1 is a protein called Tyrosine-protein phosphatase non-receptor type 11.

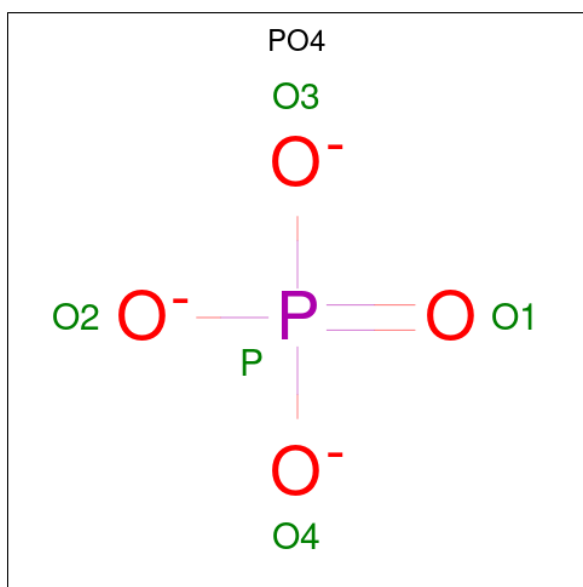
Mol	Chain	Residues	Atoms					ZeroOcc	AltConf	Trace
1	A	486	Total	C	N	O	S	0	0	0
			3931	2478	697	738	18			
1	B	479	Total	C	N	O	S	0	1	0
			3885	2453	691	722	19			

- Molecule 2 is (3S,4S)-8-{6-amino-5-[(2-amino-3-chloropyridin-4-yl)sulfanyl]pyrazin-2-yl}-3-methyl-2-oxa-8-azaspiro[4.5]decan-4-amine (three-letter code: VKS) (formula: C<sub>18</sub>H<sub>24</sub>ClN<sub>7</sub>OS) (labeled as "Ligand of Interest" by author).



Mol	Chain	Residues	Atoms						ZeroOcc	AltConf
2	A	1	Total	C	Cl	N	O	S	0	0
			28	18	1	7	1	1		
2	B	1	Total	C	Cl	N	O	S	0	0
			28	18	1	7	1	1		

- Molecule 3 is PHOSPHATE ION (three-letter code: PO4) (formula: O<sub>4</sub>P).



Mol	Chain	Residues	Atoms			ZeroOcc	AltConf
3	A	1	Total	O	P	0	0
			5	4	1		
3	A	1	Total	O	P	0	0
			5	4	1		
3	A	1	Total	O	P	0	0
			5	4	1		
3	B	1	Total	O	P	0	0
			5	4	1		
3	B	1	Total	O	P	0	0
			5	4	1		
3	B	1	Total	O	P	0	0
			5	4	1		

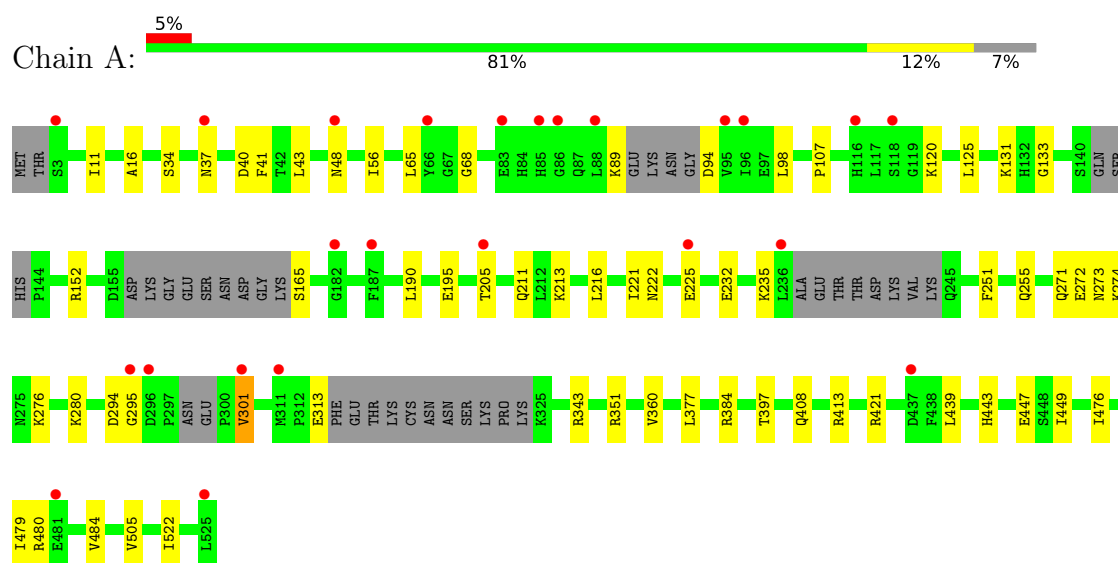
- Molecule 4 is water.

Mol	Chain	Residues	Atoms		ZeroOcc	AltConf
4	A	188	Total	O	0	0
			188	188		
4	B	163	Total	O	0	1
			164	164		

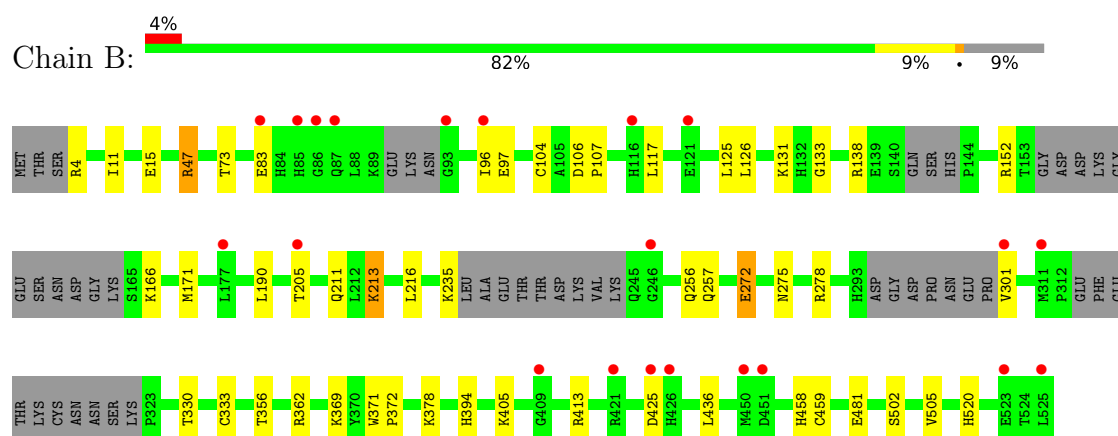
### 3 Residue-property plots [i](#)

These plots are drawn for all protein, RNA, DNA and oligosaccharide chains in the entry. The first graphic for a chain summarises the proportions of the various outlier classes displayed in the second graphic. The second graphic shows the sequence view annotated by issues in geometry and electron density. Residues are color-coded according to the number of geometric quality criteria for which they contain at least one outlier: green = 0, yellow = 1, orange = 2 and red = 3 or more. A red dot above a residue indicates a poor fit to the electron density ( $RSRZ > 2$ ). Stretches of 2 or more consecutive residues without any outlier are shown as a green connector. Residues present in the sample, but not in the model, are shown in grey.

- Molecule 1: Tyrosine-protein phosphatase non-receptor type 11



- Molecule 1: Tyrosine-protein phosphatase non-receptor type 11



## 4 Data and refinement statistics

Property	Value	Source
Space group	P 1 21 1	Depositor
Cell constants a, b, c, $\alpha$ , $\beta$ , $\gamma$	46.29Å 212.56Å 55.75Å 90.00° 96.72° 90.00°	Depositor
Resolution (Å)	106.28 – 2.17 106.28 – 2.17	Depositor EDS
% Data completeness (in resolution range)	96.0 (106.28-2.17) 96.0 (106.28-2.17)	Depositor EDS
$R_{merge}$	0.11	Depositor
$R_{sym}$	(Not available)	Depositor
$\langle I/\sigma(I) \rangle$ <sup>1</sup>	1.96 (at 2.16Å)	Xtriage
Refinement program	BUSTER 2.11.7 (19-MAR-2020)	Depositor
R, $R_{free}$	0.192 , 0.236 0.204 , 0.250	Depositor DCC
$R_{free}$ test set	2680 reflections (4.93%)	wwPDB-VP
Wilson B-factor (Å <sup>2</sup> )	32.5	Xtriage
Anisotropy	0.162	Xtriage
Bulk solvent $k_{sol}$ (e/Å <sup>3</sup> ), $B_{sol}$ (Å <sup>2</sup> )	0.34 , 48.4	EDS
L-test for twinning <sup>2</sup>	$\langle  L  \rangle = 0.48$ , $\langle L^2 \rangle = 0.32$	Xtriage
Estimated twinning fraction	No twinning to report.	Xtriage
$F_o, F_c$ correlation	0.94	EDS
Total number of atoms	8254	wwPDB-VP
Average B, all atoms (Å <sup>2</sup> )	36.0	wwPDB-VP

Xtriage's analysis on translational NCS is as follows: *The largest off-origin peak in the Patterson function is 5.06% of the height of the origin peak. No significant pseudotranslation is detected.*

<sup>1</sup>Intensities estimated from amplitudes.

<sup>2</sup>Theoretical values of  $\langle |L| \rangle$ ,  $\langle L^2 \rangle$  for acentric reflections are 0.5, 0.333 respectively for untwinned datasets, and 0.375, 0.2 for perfectly twinned datasets.

## 5 Model quality

### 5.1 Standard geometry

Bond lengths and bond angles in the following residue types are not validated in this section: PO4, VKS

The Z score for a bond length (or angle) is the number of standard deviations the observed value is removed from the expected value. A bond length (or angle) with  $|Z| > 5$  is considered an outlier worth inspection. RMSZ is the root-mean-square of all Z scores of the bond lengths (or angles).

Mol	Chain	Bond lengths		Bond angles	
		RMSZ	$\# Z  > 5$	RMSZ	$\# Z  > 5$
1	A	0.42	0/4011	0.59	0/5407
1	B	0.43	0/3967	0.59	0/5345
All	All	0.43	0/7978	0.59	0/10752

There are no bond length outliers.

There are no bond angle outliers.

There are no chirality outliers.

There are no planarity outliers.

### 5.2 Too-close contacts

In the following table, the Non-H and H(model) columns list the number of non-hydrogen atoms and hydrogen atoms in the chain respectively. The H(added) column lists the number of hydrogen atoms added and optimized by MolProbity. The Clashes column lists the number of clashes within the asymmetric unit, whereas Symm-Clashes lists symmetry related clashes.

Mol	Chain	Non-H	H(model)	H(added)	Clashes	Symm-Clashes
1	A	3931	0	3869	29	0
1	B	3885	0	3843	21	0
2	A	28	0	0	0	0
2	B	28	0	0	2	0
3	A	15	0	0	0	0
3	B	15	0	0	1	0
4	A	188	0	0	0	0
4	B	164	0	0	0	0
All	All	8254	0	7712	49	0

The all-atom clashscore is defined as the number of clashes found per 1000 atoms (including hydrogen atoms). The all-atom clashscore for this structure is 3.

All (49) close contacts within the same asymmetric unit are listed below, sorted by their clash magnitude.

Atom-1	Atom-2	Interatomic distance (Å)	Clash overlap (Å)
1:A:294:ASP:HB2	1:A:343:ARG:HE	1.06	1.11
1:A:294:ASP:HB2	1:A:343:ARG:NE	1.88	0.89
1:A:273:ASN:HA	1:A:276:LYS:HD2	1.58	0.83
1:A:294:ASP:CB	1:A:343:ARG:HE	1.93	0.78
1:B:272:GLU:HG3	1:B:301:VAL:HG21	1.71	0.70
1:A:271:GLN:HA	1:A:274:LYS:CE	2.24	0.67
1:B:47:ARG:HD3	1:B:96:ILE:HD11	1.77	0.67
1:A:272:GLU:HB2	1:A:301:VAL:HG21	1.78	0.65
1:A:232:GLU:HA	1:A:235:LYS:HD2	1.78	0.65
1:B:330:THR:HG23	1:B:458:HIS:HB3	1.81	0.63
1:B:126:LEU:HD23	1:B:216:LEU:HD13	1.79	0.63
1:A:271:GLN:HA	1:A:274:LYS:HE3	1.80	0.62
1:A:272:GLU:HB3	1:A:301:VAL:HG11	1.82	0.61
2:B:601:VKS:N1	3:B:604:PO4:O4	2.34	0.60
1:B:117:LEU:O	1:B:138:ARG:HD2	2.02	0.58
1:A:125:LEU:HB3	1:A:216:LEU:HD21	1.88	0.54
1:A:479:ILE:HD13	1:A:522:ILE:HD11	1.91	0.53
1:A:271:GLN:HA	1:A:274:LYS:HE2	1.92	0.51
1:A:360:VAL:HG21	1:B:394:HIS:CD2	2.45	0.51
1:B:133:GLY:HA3	1:B:213:LYS:HB2	1.93	0.49
1:A:443:HIS:NE2	1:A:447:GLU:OE1	2.44	0.49
1:A:133:GLY:HA3	1:A:213:LYS:HB2	1.94	0.49
1:B:436:LEU:HD12	1:B:520:HIS:ND1	2.27	0.48
1:B:356:THR:OG1	1:B:459:CYS:HB3	2.14	0.48
1:A:272:GLU:CB	1:A:301:VAL:HG11	2.43	0.48
1:B:107:PRO:HG3	1:B:190:LEU:HD12	1.96	0.47
1:A:43:LEU:HD21	1:A:98:LEU:HD11	1.96	0.47
1:A:11:ILE:HD12	1:A:16:ALA:HB2	1.96	0.47
1:A:351:ARG:HG3	1:A:449:ILE:HG21	1.98	0.46
1:B:257:GLN:HG3	2:B:601:VKS:CL1	2.52	0.46
1:B:125:LEU:HB3	1:B:216:LEU:HD21	1.98	0.46
1:B:4:ARG:HD3	1:B:256:GLN:HA	1.97	0.46
1:B:372:PRO:HB3	1:B:378:LYS:HG3	1.99	0.45
1:A:37:ASN:ND2	1:A:40:ASP:OD2	2.50	0.45
1:B:278:ARG:NH2	1:B:333:CYS:O	2.47	0.44
1:A:251:PHE:O	1:A:255:GLN:HG2	2.18	0.44
1:B:436:LEU:CD1	1:B:520:HIS:ND1	2.80	0.44
1:A:41:PHE:HB2	1:A:56:ILE:HB	1.99	0.43
1:B:362:ARG:HD3	1:B:425:ASP:HB3	2.01	0.43
1:B:104:CYS:SG	1:B:106:ASP:HB3	2.59	0.42

*Continued on next page...*

Continued from previous page...

Atom-1	Atom-2	Interatomic distance (Å)	Clash overlap (Å)
1:A:107:PRO:HG3	1:A:190:LEU:HD12	2.02	0.42
1:A:476:ILE:O	1:A:480:ARG:HB2	2.21	0.41
1:B:369:LYS:HE2	1:B:371:TRP:NE1	2.36	0.41
1:A:397:THR:OG1	1:A:421:ARG:NH1	2.46	0.41
1:A:222:ASN:O	1:A:225:GLU:HG2	2.21	0.40
1:A:377:LEU:HD11	1:A:384:ARG:HG2	2.03	0.40
1:B:11:ILE:HG12	1:B:15:GLU:HB2	2.02	0.40
1:A:360:VAL:HG21	1:B:394:HIS:HD2	1.86	0.40
1:A:65:LEU:HD23	1:A:68:GLY:HA3	2.03	0.40

There are no symmetry-related clashes.

## 5.3 Torsion angles [i](#)

### 5.3.1 Protein backbone [i](#)

In the following table, the Percentiles column shows the percent Ramachandran outliers of the chain as a percentile score with respect to all X-ray entries followed by that with respect to entries of similar resolution.

The Analysed column shows the number of residues for which the backbone conformation was analysed, and the total number of residues.

Mol	Chain	Analysed	Favoured	Allowed	Outliers	Percentiles	
1	A	472/525 (90%)	457 (97%)	12 (2%)	3 (1%)	25	18
1	B	466/525 (89%)	456 (98%)	9 (2%)	1 (0%)	47	46
All	All	938/1050 (89%)	913 (97%)	21 (2%)	4 (0%)	34	29

All (4) Ramachandran outliers are listed below:

Mol	Chain	Res	Type
1	A	295	GLY
1	A	505	VAL
1	B	505	VAL
1	A	301	VAL

### 5.3.2 Protein sidechains ⓘ

In the following table, the Percentiles column shows the percent sidechain outliers of the chain as a percentile score with respect to all X-ray entries followed by that with respect to entries of similar resolution.

The Analysed column shows the number of residues for which the sidechain conformation was analysed, and the total number of residues.

Mol	Chain	Analysed	Rotameric	Outliers	Percentiles	
1	A	432/467 (92%)	414 (96%)	18 (4%)	30	28
1	B	427/467 (91%)	409 (96%)	18 (4%)	30	28
All	All	859/934 (92%)	823 (96%)	36 (4%)	30	28

All (36) residues with a non-rotameric sidechain are listed below:

Mol	Chain	Res	Type
1	A	34	SER
1	A	48	ASN
1	A	89	LYS
1	A	94	ASP
1	A	120	LYS
1	A	131	LYS
1	A	152	ARG
1	A	165	SER
1	A	195	GLU
1	A	205	THR
1	A	211	GLN
1	A	221	ILE
1	A	280	LYS
1	A	313	GLU
1	A	408	GLN
1	A	413	ARG
1	A	439	LEU
1	A	484	VAL
1	B	47	ARG
1	B	73	THR
1	B	83	GLU
1	B	97	GLU
1	B	131	LYS
1	B	152	ARG
1	B	166	LYS
1	B	171	MET
1	B	205	THR

*Continued on next page...*

*Continued from previous page...*

Mol	Chain	Res	Type
1	B	211	GLN
1	B	213	LYS
1	B	235	LYS
1	B	272	GLU
1	B	275	ASN
1	B	405	LYS
1	B	413	ARG
1	B	481	GLU
1	B	502	SER

Some sidechains can be flipped to improve hydrogen bonding and reduce clashes. All (6) such sidechains are listed below:

Mol	Chain	Res	Type
1	A	57	GLN
1	A	211	GLN
1	B	85	HIS
1	B	256	GLN
1	B	394	HIS
1	B	444	HIS

### 5.3.3 RNA [i](#)

There are no RNA molecules in this entry.

## 5.4 Non-standard residues in protein, DNA, RNA chains [i](#)

There are no non-standard protein/DNA/RNA residues in this entry.

## 5.5 Carbohydrates [i](#)

There are no monosaccharides in this entry.

## 5.6 Ligand geometry [i](#)

8 ligands are modelled in this entry.

In the following table, the Counts columns list the number of bonds (or angles) for which Mogul statistics could be retrieved, the number of bonds (or angles) that are observed in the model and the number of bonds (or angles) that are defined in the Chemical Component Dictionary. The

Link column lists molecule types, if any, to which the group is linked. The Z score for a bond length (or angle) is the number of standard deviations the observed value is removed from the expected value. A bond length (or angle) with  $|Z| > 2$  is considered an outlier worth inspection. RMSZ is the root-mean-square of all Z scores of the bond lengths (or angles).

Mol	Type	Chain	Res	Link	Bond lengths			Bond angles		
					Counts	RMSZ	# Z  > 2	Counts	RMSZ	# Z  > 2
3	PO4	A	603	-	4,4,4	2.10	1 (25%)	6,6,6	0.61	0
3	PO4	A	604	-	4,4,4	2.50	1 (25%)	6,6,6	0.51	0
3	PO4	B	602	-	4,4,4	1.83	0	6,6,6	0.51	0
2	VKS	A	601	-	28,31,31	1.25	4 (14%)	28,46,46	2.28	9 (32%)
3	PO4	B	603	-	4,4,4	2.01	1 (25%)	6,6,6	0.58	0
2	VKS	B	601	-	28,31,31	1.22	1 (3%)	28,46,46	2.42	9 (32%)
3	PO4	A	602	-	4,4,4	2.47	1 (25%)	6,6,6	0.59	0
3	PO4	B	604	-	4,4,4	2.52	1 (25%)	6,6,6	0.53	0

In the following table, the Chirals column lists the number of chiral outliers, the number of chiral centers analysed, the number of these observed in the model and the number defined in the Chemical Component Dictionary. Similar counts are reported in the Torsion and Rings columns. '-' means no outliers of that kind were identified.

Mol	Type	Chain	Res	Link	Chirals	Torsions	Rings
2	VKS	B	601	-	-	1/8/36/36	0/4/4/4
2	VKS	A	601	-	-	1/8/36/36	0/4/4/4

All (10) bond length outliers are listed below:

Mol	Chain	Res	Type	Atoms	Z	Observed(Å)	Ideal(Å)
3	A	604	PO4	P-O1	4.14	1.60	1.50
3	B	604	PO4	P-O1	4.13	1.60	1.50
3	A	602	PO4	P-O1	4.10	1.60	1.50
3	A	603	PO4	P-O1	2.48	1.56	1.50
2	B	601	VKS	C14-C13	2.37	1.57	1.53
2	A	601	VKS	C12-C13	2.32	1.57	1.53
2	A	601	VKS	C8-N5	2.17	1.42	1.37
3	B	603	PO4	P-O1	2.16	1.55	1.50
2	A	601	VKS	C14-C13	2.11	1.56	1.53
2	A	601	VKS	C9-N4	2.05	1.39	1.34

All (18) bond angle outliers are listed below:

Mol	Chain	Res	Type	Atoms	Z	Observed(°)	Ideal(°)
2	A	601	VKS	C3-C2-N7	-5.64	119.64	122.94

*Continued on next page...*

*Continued from previous page...*

Mol	Chain	Res	Type	Atoms	Z	Observed(°)	Ideal(°)
2	B	601	VKS	C12-C13-C15	-5.61	106.48	111.41
2	B	601	VKS	C2-C3-CL1	5.41	121.56	118.92
2	B	601	VKS	C3-C2-N1	5.37	123.80	119.30
2	A	601	VKS	C3-C2-N1	5.19	123.64	119.30
2	A	601	VKS	C2-C3-CL1	4.04	120.89	118.92
2	B	601	VKS	C14-C10-N5	-4.02	103.23	110.34
2	A	601	VKS	C14-C10-N5	-3.96	103.34	110.34
2	A	601	VKS	C12-C13-C15	-3.63	108.22	111.41
2	A	601	VKS	C14-C13-C15	-3.46	108.37	111.41
2	B	601	VKS	C14-C13-C15	-3.45	108.38	111.41
2	A	601	VKS	C15-C13-C17	3.03	103.75	100.61
2	B	601	VKS	C15-C13-C17	2.97	103.68	100.61
2	B	601	VKS	C12-C11-N5	-2.75	105.47	110.34
2	A	601	VKS	C12-C11-N5	-2.47	105.96	110.34
2	B	601	VKS	C3-C2-N7	-2.21	121.64	122.94
2	B	601	VKS	C10-N5-C11	2.09	116.14	111.52
2	A	601	VKS	C10-N5-C11	2.08	116.12	111.52

There are no chirality outliers.

All (2) torsion outliers are listed below:

Mol	Chain	Res	Type	Atoms
2	A	601	VKS	N2-C6-S1-C4
2	B	601	VKS	N2-C6-S1-C4

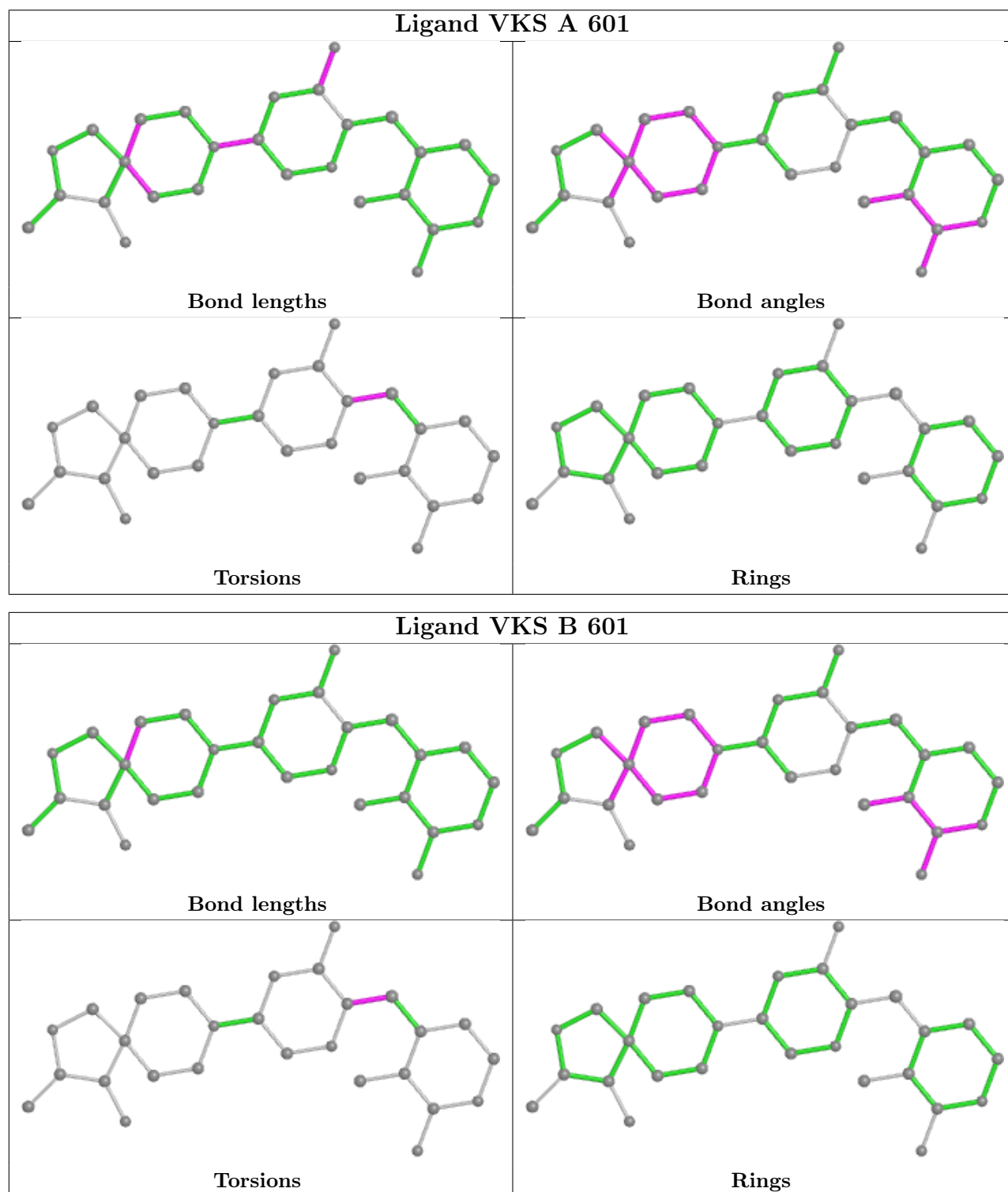
There are no ring outliers.

2 monomers are involved in 2 short contacts:

Mol	Chain	Res	Type	Clashes	Symm-Clashes
2	B	601	VKS	2	0
3	B	604	PO4	1	0

The following is a two-dimensional graphical depiction of Mogul quality analysis of bond lengths, bond angles, torsion angles, and ring geometry for all instances of the Ligand of Interest. In addition, ligands with molecular weight > 250 and outliers as shown on the validation Tables will also be included. For torsion angles, if less than 5% of the Mogul distribution of torsion angles is within 10 degrees of the torsion angle in question, then that torsion angle is considered an outlier. Any bond that is central to one or more torsion angles identified as an outlier by Mogul will be highlighted in the graph. For rings, the root-mean-square deviation (RMSD) between the ring in question and similar rings identified by Mogul is calculated over all ring torsion angles. If the average RMSD is greater than 60 degrees and the minimal RMSD between the ring in question and any Mogul-identified rings is also greater than 60 degrees, then that ring is considered an outlier.

The outliers are highlighted in purple. The color gray indicates Mogul did not find sufficient equivalents in the CSD to analyse the geometry.



## 5.7 Other polymers [i](#)

There are no such residues in this entry.

## 5.8 Polymer linkage issues ⓘ

There are no chain breaks in this entry.

## 6 Fit of model and data

### 6.1 Protein, DNA and RNA chains

In the following table, the column labelled ‘#RSRZ > 2’ contains the number (and percentage) of RSRZ outliers, followed by percent RSRZ outliers for the chain as percentile scores relative to all X-ray entries and entries of similar resolution. The OWAB column contains the minimum, median, 95<sup>th</sup> percentile and maximum values of the occupancy-weighted average B-factor per residue. The column labelled ‘Q < 0.9’ lists the number of (and percentage) of residues with an average occupancy less than 0.9.

Mol	Chain	Analysed	<RSRZ>	#RSRZ > 2		OWAB(Å <sup>2</sup> )	Q < 0.9
1	A	486/525 (92%)	0.56	24 (4%)	29 38	19, 36, 56, 68	0
1	B	479/525 (91%)	0.50	21 (4%)	34 43	17, 35, 54, 64	0
All	All	965/1050 (91%)	0.53	45 (4%)	31 41	17, 35, 55, 68	0

All (45) RSRZ outliers are listed below:

Mol	Chain	Res	Type	RSRZ
1	A	85	HIS	6.0
1	B	85	HIS	5.6
1	A	525	LEU	5.2
1	B	426	HIS	5.2
1	A	296	ASP	4.3
1	A	205	THR	3.9
1	A	116	HIS	3.8
1	B	177	LEU	3.5
1	A	236	LEU	3.4
1	B	121	GLU	3.4
1	B	523	GLU	3.4
1	A	83	GLU	3.4
1	A	295	GLY	3.4
1	A	86	GLY	3.1
1	A	66	TYR	3.1
1	A	225	GLU	3.0
1	B	86	GLY	2.9
1	A	37	ASN	2.8
1	B	421	ARG	2.8
1	B	425	ASP	2.8
1	B	246	GLY	2.7
1	B	525	LEU	2.7
1	B	450	MET	2.5
1	B	93	GLY	2.5

*Continued on next page...*

*Continued from previous page...*

Mol	Chain	Res	Type	RSRZ
1	B	87	GLN	2.5
1	B	116	HIS	2.5
1	A	301	VAL	2.4
1	A	48	ASN	2.4
1	B	451	ASP	2.4
1	B	205	THR	2.4
1	B	96	ILE	2.4
1	A	118	SER	2.3
1	B	83	GLU	2.3
1	A	187	PHE	2.3
1	B	409	GLY	2.3
1	A	95	VAL	2.2
1	A	311	MET	2.2
1	B	311	MET	2.2
1	A	96	ILE	2.1
1	A	481	GLU	2.1
1	A	3	SER	2.1
1	A	182	GLY	2.1
1	A	88	LEU	2.0
1	B	301	VAL	2.0
1	A	437	ASP	2.0

## 6.2 Non-standard residues in protein, DNA, RNA chains [i](#)

There are no non-standard protein/DNA/RNA residues in this entry.

## 6.3 Carbohydrates [i](#)

There are no monosaccharides in this entry.

## 6.4 Ligands [i](#)

In the following table, the Atoms column lists the number of modelled atoms in the group and the number defined in the chemical component dictionary. The B-factors column lists the minimum, median, 95<sup>th</sup> percentile and maximum values of B factors of atoms in the group. The column labelled 'Q< 0.9' lists the number of atoms with occupancy less than 0.9.

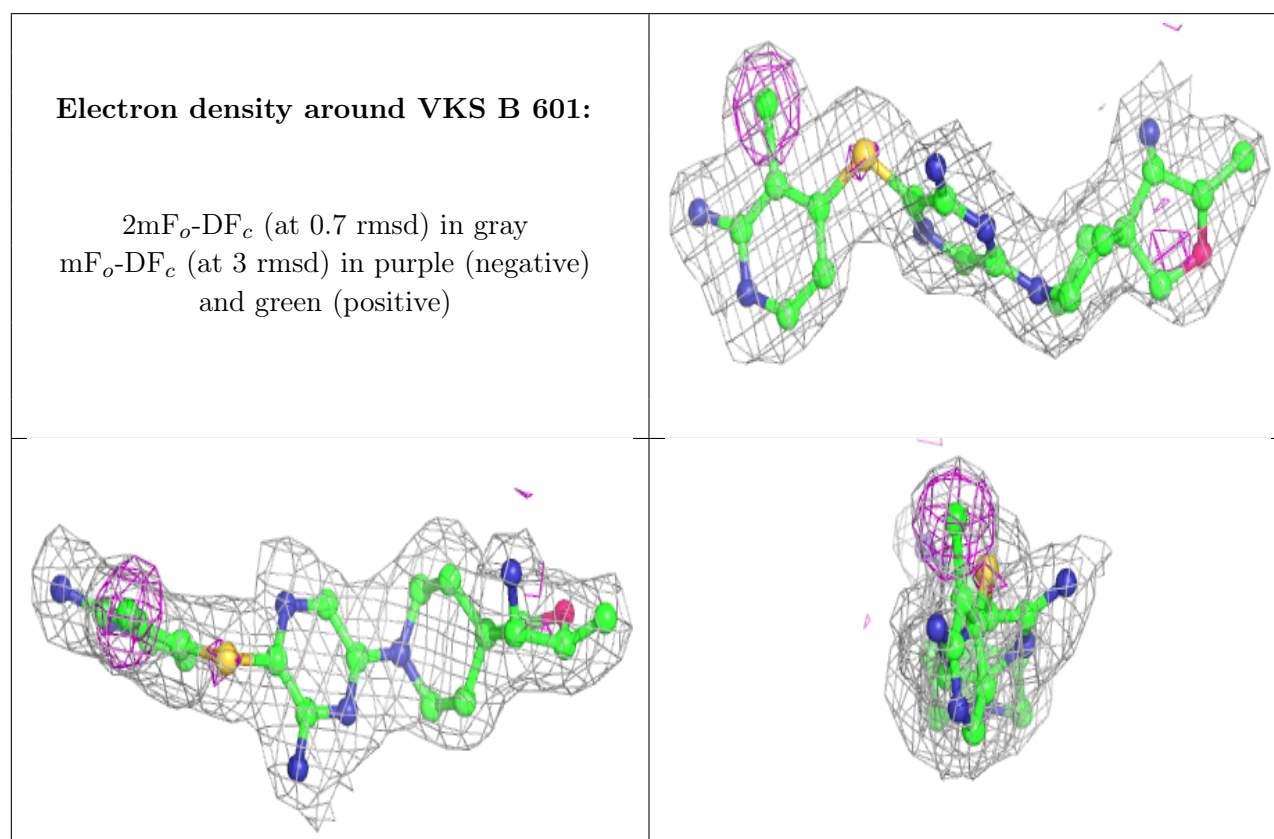
Mol	Type	Chain	Res	Atoms	RSCC	RSR	B-factors( $\text{\AA}^2$ )	Q<0.9
3	PO4	A	602	5/5	0.81	0.22	83,83,83,83	0
3	PO4	A	603	5/5	0.86	0.20	69,70,70,70	0

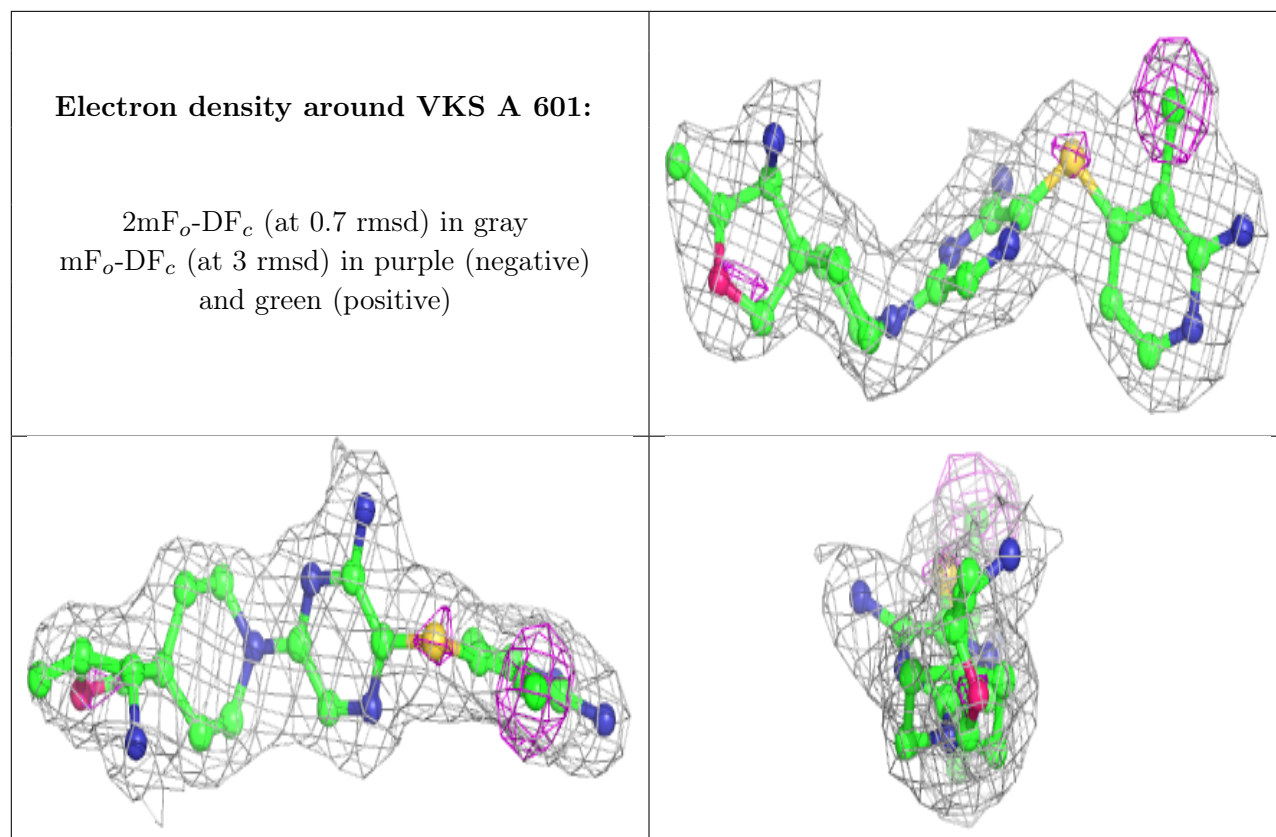
*Continued on next page...*

*Continued from previous page...*

Mol	Type	Chain	Res	Atoms	RSCC	RSR	B-factors( $\text{\AA}^2$ )	Q<0.9
3	PO4	B	604	5/5	0.91	0.17	65,65,66,66	0
3	PO4	A	604	5/5	0.92	0.14	74,74,75,75	0
3	PO4	B	603	5/5	0.92	0.16	65,65,65,66	0
2	VKS	B	601	28/28	0.94	0.13	26,28,30,30	0
3	PO4	B	602	5/5	0.95	0.16	40,40,41,41	0
2	VKS	A	601	28/28	0.95	0.13	26,28,30,32	0

The following is a graphical depiction of the model fit to experimental electron density of all instances of the Ligand of Interest. In addition, ligands with molecular weight > 250 and outliers as shown on the geometry validation Tables will also be included. Each fit is shown from different orientation to approximate a three-dimensional view.





## 6.5 Other polymers [i](#)

There are no such residues in this entry.