



Full wwPDB X-ray Structure Validation Report ⓘ

May 13, 2020 – 08:13 am BST

PDB ID : 6JW8
Title : The crystal structure of KanD2 in complex with NADH and 3"-deamino-3"-hydroxykanamycin B
Authors : Kudo, F.; Kitayama, Y.; Miyanaga, A.; Hirayama, A.; Eguchi, T.
Deposited on : 2019-04-18
Resolution : 2.40 Å(reported)

This is a Full wwPDB X-ray Structure Validation Report for a publicly released PDB entry.

We welcome your comments at validation@mail.wwpdb.org

A user guide is available at

<https://www.wwpdb.org/validation/2017/XrayValidationReportHelp>

with specific help available everywhere you see the ⓘ symbol.

The following versions of software and data (see [references ⓘ](#)) were used in the production of this report:

MolProbity : 4.02b-467
Mogul : 1.8.5 (274361), CSD as541be (2020)
Xtriage (Phenix) : 1.13
EDS : 2.11
buster-report : 1.1.7 (2018)
Percentile statistics : 20191225.v01 (using entries in the PDB archive December 25th 2019)
Refmac : 5.8.0158
CCP4 : 7.0.044 (Gargrove)
Ideal geometry (proteins) : Engh & Huber (2001)
Ideal geometry (DNA, RNA) : Parkinson et al. (1996)
Validation Pipeline (wwPDB-VP) : 2.11

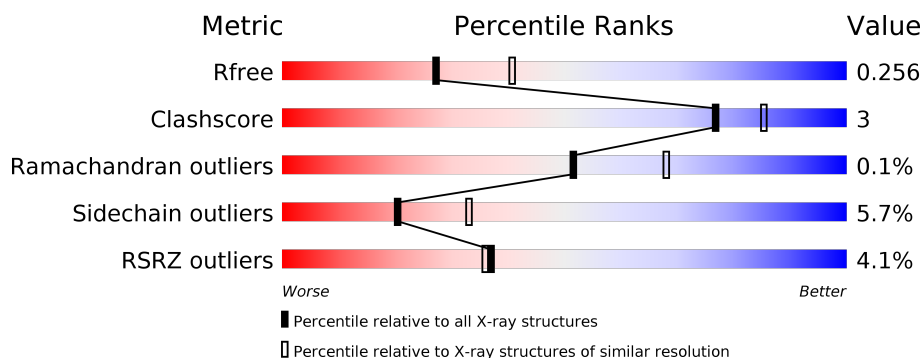
1 Overall quality at a glance

The following experimental techniques were used to determine the structure:

X-RAY DIFFRACTION

The reported resolution of this entry is 2.40 Å.

Percentile scores (ranging between 0-100) for global validation metrics of the entry are shown in the following graphic. The table shows the number of entries on which the scores are based.



Metric	Whole archive (#Entries)	Similar resolution (#Entries, resolution range(Å))
R_{free}	130704	3907 (2.40-2.40)
Clashscore	141614	4398 (2.40-2.40)
Ramachandran outliers	138981	4318 (2.40-2.40)
Sidechain outliers	138945	4319 (2.40-2.40)
RSRZ outliers	127900	3811 (2.40-2.40)

The table below summarises the geometric issues observed across the polymeric chains and their fit to the electron density. The red, orange, yellow and green segments on the lower bar indicate the fraction of residues that contain outliers for ≥ 3 , 2, 1 and 0 types of geometric quality criteria respectively. A grey segment represents the fraction of residues that are not modelled. The numeric value for each fraction is indicated below the corresponding segment, with a dot representing fractions $\leq 5\%$. The upper red bar (where present) indicates the fraction of residues that have poor fit to the electron density. The numeric value is given above the bar.

Mol	Chain	Length	Quality of chain
1	A	386	<div> <div>3%</div> <div> <div></div> <div>81%</div> <div>7%</div> <div>•</div> <div>11%</div> </div> </div>
1	B	386	<div> <div>4%</div> <div> <div></div> <div>78%</div> <div>9%</div> <div>•</div> <div>12%</div> </div> </div>

2 Entry composition

There are 4 unique types of molecules in this entry. The entry contains 5334 atoms, of which 0 are hydrogens and 0 are deuteriums.

In the tables below, the ZeroOcc column contains the number of atoms modelled with zero occupancy, the AltConf column contains the number of residues with at least one atom in alternate conformation and the Trace column contains the number of residues modelled with at most 2 atoms.

- Molecule 1 is a protein called Dehydrogenase.

Mol	Chain	Residues	Atoms					ZeroOcc	AltConf	Trace
1	A	342	Total	C	N	O	S	0	1	0
			2599	1632	484	477	6			
1	B	341	Total	C	N	O	S	0	0	0
			2584	1624	479	475	6			

There are 26 discrepancies between the modelled and reference sequences:

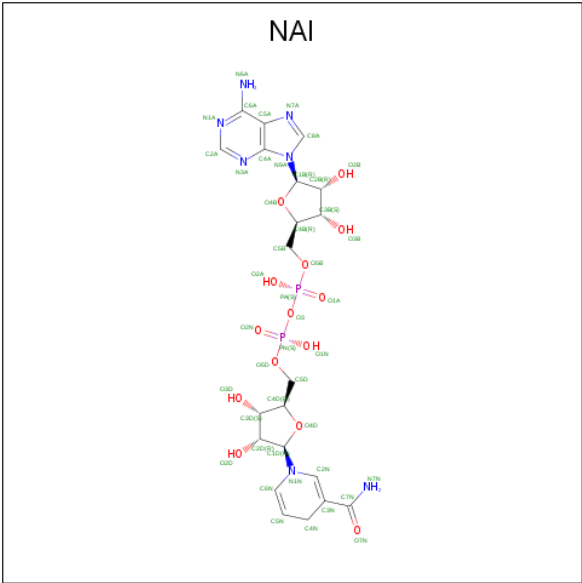
Chain	Residue	Modelled	Actual	Comment	Reference
A	374	LYS	-	expression tag	UNP Q6L737
A	375	LEU	-	expression tag	UNP Q6L737
A	376	ALA	-	expression tag	UNP Q6L737
A	377	ALA	-	expression tag	UNP Q6L737
A	378	ALA	-	expression tag	UNP Q6L737
A	379	LEU	-	expression tag	UNP Q6L737
A	380	GLU	-	expression tag	UNP Q6L737
A	381	HIS	-	expression tag	UNP Q6L737
A	382	HIS	-	expression tag	UNP Q6L737
A	383	HIS	-	expression tag	UNP Q6L737
A	384	HIS	-	expression tag	UNP Q6L737
A	385	HIS	-	expression tag	UNP Q6L737
A	386	HIS	-	expression tag	UNP Q6L737
B	374	LYS	-	expression tag	UNP Q6L737
B	375	LEU	-	expression tag	UNP Q6L737
B	376	ALA	-	expression tag	UNP Q6L737
B	377	ALA	-	expression tag	UNP Q6L737
B	378	ALA	-	expression tag	UNP Q6L737
B	379	LEU	-	expression tag	UNP Q6L737
B	380	GLU	-	expression tag	UNP Q6L737
B	381	HIS	-	expression tag	UNP Q6L737
B	382	HIS	-	expression tag	UNP Q6L737
B	383	HIS	-	expression tag	UNP Q6L737
B	384	HIS	-	expression tag	UNP Q6L737
B	385	HIS	-	expression tag	UNP Q6L737

Continued on next page...

Continued from previous page...

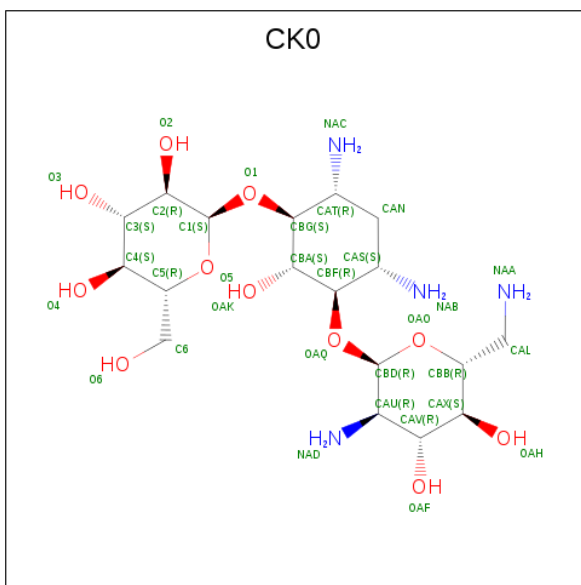
Chain	Residue	Modelled	Actual	Comment	Reference
B	386	HIS	-	expression tag	UNP Q6L737

- Molecule 2 is 1,4-DIHYDRONICOTINAMIDE ADENINE DINUCLEOTIDE (three-letter code: NAI) (formula: C₂₁H₂₉N₇O₁₄P₂).



Mol	Chain	Residues	Atoms					ZeroOcc	AltConf
2	A	1	Total	C	N	O	P	0	0
			44	21	7	14	2		
2	B	1	Total	C	N	O	P	0	0
			44	21	7	14	2		

- Molecule 3 is (2S,3R,4S,5S,6R)-2-[(1S,2S,3R,4S,6R)-3-[(2R,3R,4R,5S,6R)-6-(aminomethyl)-3-azanyl-4,5-bis(oxidanyl)oxan-2-yl]oxy-4,6-bis(azanyl)-2-oxidanyl-cyclohexyl]oxy-6-(hydroxymethyl)oxane-3,4,5-triol (three-letter code: CK0) (formula: C₁₈H₃₆N₄O₁₁).



Mol	Chain	Residues	Atoms				ZeroOcc	AltConf
3	A	1	Total	C	N	O	0	0
			33	18	4	11		

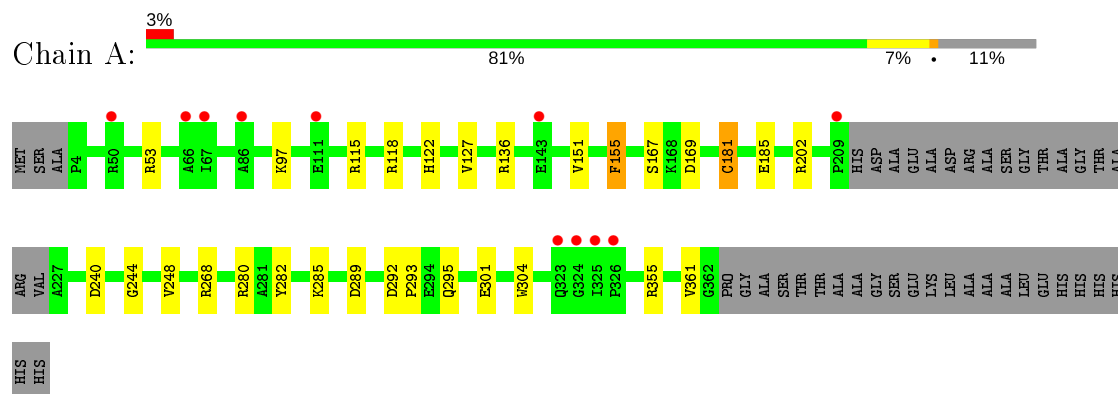
- Molecule 4 is water.

Mol	Chain	Residues	Atoms	ZeroOcc	AltConf
4	A	16	Total O 16 16	0	0
4	B	14	Total O 14 14	0	0

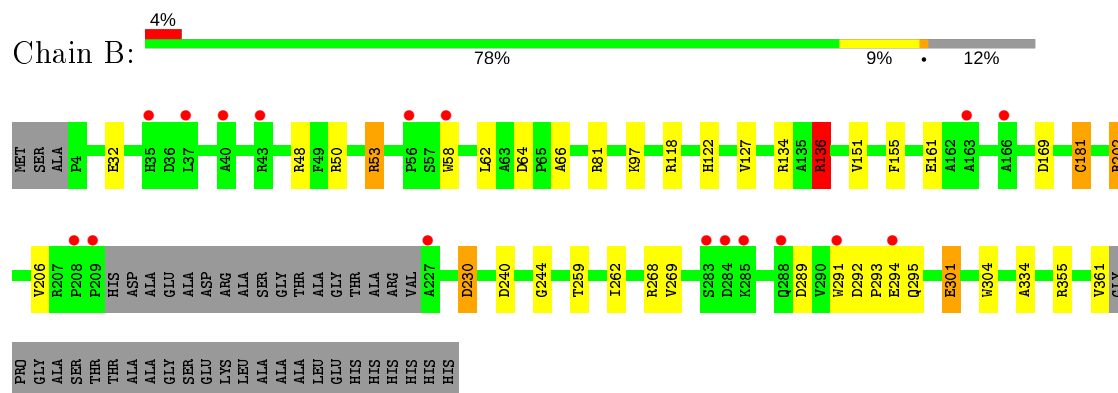
3 Residue-property plots [i](#)

These plots are drawn for all protein, RNA and DNA chains in the entry. The first graphic for a chain summarises the proportions of the various outlier classes displayed in the second graphic. The second graphic shows the sequence view annotated by issues in geometry and electron density. Residues are color-coded according to the number of geometric quality criteria for which they contain at least one outlier: green = 0, yellow = 1, orange = 2 and red = 3 or more. A red dot above a residue indicates a poor fit to the electron density ($RSRZ > 2$). Stretches of 2 or more consecutive residues without any outlier are shown as a green connector. Residues present in the sample, but not in the model, are shown in grey.

• Molecule 1: Dehydrogenase



• Molecule 1: Dehydrogenase



4 Data and refinement statistics

Property	Value	Source
Space group	P 31 2 1	Depositor
Cell constants a, b, c, α , β , γ	119.76Å 119.76Å 132.90Å 90.00° 90.00° 120.00°	Depositor
Resolution (Å)	44.34 – 2.40 40.88 – 2.40	Depositor EDS
% Data completeness (in resolution range)	99.9 (44.34-2.40) 100.0 (40.88-2.40)	Depositor EDS
R_{merge}	0.08	Depositor
R_{sym}	(Not available)	Depositor
$\langle I/\sigma(I) \rangle$ ¹	3.00 (at 2.39Å)	Xtriage
Refinement program	REFMAC 5.7.0029	Depositor
R, R_{free}	0.220 , 0.252 0.231 , 0.256	Depositor DCC
R_{free} test set	2122 reflections (4.87%)	wwPDB-VP
Wilson B-factor (Å ²)	53.1	Xtriage
Anisotropy	0.353	Xtriage
Bulk solvent k_{sol} (e/Å ³), B_{sol} (Å ²)	0.34 , 37.4	EDS
L-test for twinning ²	$\langle L \rangle = 0.51$, $\langle L^2 \rangle = 0.34$	Xtriage
Estimated twinning fraction	0.019 for -h,-k,l	Xtriage
F_o, F_c correlation	0.95	EDS
Total number of atoms	5334	wwPDB-VP
Average B, all atoms (Å ²)	69.0	wwPDB-VP

Xtriage's analysis on translational NCS is as follows: *The largest off-origin peak in the Patterson function is 4.19% of the height of the origin peak. No significant pseudotranslation is detected.*

¹Intensities estimated from amplitudes.

²Theoretical values of $\langle |L| \rangle$, $\langle L^2 \rangle$ for acentric reflections are 0.5, 0.333 respectively for untwinned datasets, and 0.375, 0.2 for perfectly twinned datasets.

5 Model quality [i](#)

5.1 Standard geometry [i](#)

Bond lengths and bond angles in the following residue types are not validated in this section: NAI, CK0

The Z score for a bond length (or angle) is the number of standard deviations the observed value is removed from the expected value. A bond length (or angle) with $|Z| > 5$ is considered an outlier worth inspection. RMSZ is the root-mean-square of all Z scores of the bond lengths (or angles).

Mol	Chain	Bond lengths		Bond angles	
		RMSZ	$\# Z > 5$	RMSZ	$\# Z > 5$
1	A	0.82	1/2660 (0.0%)	0.90	4/3622 (0.1%)
1	B	0.85	1/2645 (0.0%)	0.97	8/3603 (0.2%)
All	All	0.84	2/5305 (0.0%)	0.94	12/7225 (0.2%)

All (2) bond length outliers are listed below:

Mol	Chain	Res	Type	Atoms	Z	Observed(Å)	Ideal(Å)
1	B	230	ASP	CB-CG	-12.51	1.25	1.51
1	A	282	TYR	CG-CD2	-5.51	1.31	1.39

All (12) bond angle outliers are listed below:

Mol	Chain	Res	Type	Atoms	Z	Observed(°)	Ideal(°)
1	B	230	ASP	CB-CG-OD1	-12.26	107.26	118.30
1	B	136	ARG	NE-CZ-NH2	8.53	124.56	120.30
1	B	230	ASP	CB-CA-C	-8.14	94.12	110.40
1	B	136	ARG	CG-CD-NE	7.65	127.87	111.80
1	A	280	ARG	NE-CZ-NH1	-7.23	116.68	120.30
1	B	48	ARG	NE-CZ-NH2	6.47	123.54	120.30
1	B	136	ARG	NE-CZ-NH1	-6.09	117.25	120.30
1	B	301	GLU	N-CA-CB	-5.81	100.14	110.60
1	B	230	ASP	OD1-CG-OD2	5.68	134.09	123.30
1	A	136	ARG	NE-CZ-NH1	-5.52	117.54	120.30
1	A	280	ARG	NE-CZ-NH2	5.25	122.92	120.30
1	A	169	ASP	CB-CG-OD2	-5.13	113.68	118.30

There are no chirality outliers.

There are no planarity outliers.

5.2 Too-close contacts ⓘ

In the following table, the Non-H and H(model) columns list the number of non-hydrogen atoms and hydrogen atoms in the chain respectively. The H(added) column lists the number of hydrogen atoms added and optimized by MolProbity. The Clashes column lists the number of clashes within the asymmetric unit, whereas Symm-Clashes lists symmetry related clashes.

Mol	Chain	Non-H	H(model)	H(added)	Clashes	Symm-Clashes
1	A	2599	0	2544	13	0
1	B	2584	0	2529	19	0
2	A	44	0	27	0	0
2	B	44	0	27	0	0
3	A	33	0	0	0	0
4	A	16	0	0	0	0
4	B	14	0	0	1	0
All	All	5334	0	5127	31	0

The all-atom clashscore is defined as the number of clashes found per 1000 atoms (including hydrogen atoms). The all-atom clashscore for this structure is 3.

All (31) close contacts within the same asymmetric unit are listed below, sorted by their clash magnitude.

Atom-1	Atom-2	Interatomic distance (Å)	Clash overlap (Å)
1:B:301:GLU:HG2	1:B:304:TRP:HB3	1.75	0.67
1:A:301:GLU:CG	1:A:304:TRP:HB3	2.24	0.66
1:B:301:GLU:CG	1:B:304:TRP:HB3	2.25	0.66
1:A:301:GLU:HG2	1:A:304:TRP:HB3	1.77	0.65
1:B:97:LYS:CE	1:B:181:CYS:SG	2.91	0.58
1:A:97:LYS:CE	1:A:181:CYS:SG	2.91	0.58
1:B:58:TRP:CE2	1:B:62:LEU:HD11	2.41	0.56
1:A:292:ASP:HA	1:A:293:PRO:C	2.26	0.54
1:A:292:ASP:OD1	1:A:292:ASP:C	2.47	0.52
1:A:97:LYS:HE3	1:A:181:CYS:SG	2.54	0.48
1:B:97:LYS:HE3	1:B:181:CYS:SG	2.56	0.46
1:A:355:ARG:HH12	1:A:361:VAL:HG23	1.81	0.46
1:B:151:VAL:O	1:B:244:GLY:HA2	2.15	0.45
1:B:292:ASP:HA	1:B:293:PRO:C	2.36	0.45
1:B:53:ARG:HB2	4:B:504:HOH:O	2.17	0.45
1:B:262:ILE:HD13	1:B:269:VAL:HG22	1.99	0.45
1:B:355:ARG:HH12	1:B:361:VAL:HG23	1.83	0.43
1:A:97:LYS:NZ	1:A:181:CYS:SG	2.90	0.42
1:A:289:ASP:HB3	1:B:134:ARG:HH22	1.83	0.42
1:B:206:VAL:N	1:B:230:ASP:OD2	2.52	0.42

Continued on next page...

Continued from previous page...

Atom-1	Atom-2	Interatomic distance (Å)	Clash overlap (Å)
1:B:50:ARG:HG3	1:B:50:ARG:HH21	1.85	0.42
1:A:301:GLU:HG3	1:A:304:TRP:HB3	1.99	0.41
1:B:202:ARG:HD2	1:B:202:ARG:HA	1.77	0.41
1:A:122:HIS:NE2	1:A:185:GLU:OE2	2.43	0.41
1:A:151:VAL:O	1:A:244:GLY:HA2	2.20	0.41
1:A:155:PHE:O	1:A:248:VAL:HA	2.21	0.41
1:B:97:LYS:NZ	1:B:181:CYS:SG	2.91	0.40
1:B:136:ARG:HB3	1:B:136:ARG:HH21	1.85	0.40
1:B:64:ASP:C	1:B:64:ASP:OD2	2.60	0.40
1:B:122:HIS:CD2	1:B:334:ALA:HB2	2.56	0.40
1:B:64:ASP:OD2	1:B:66:ALA:N	2.47	0.40

There are no symmetry-related clashes.

5.3 Torsion angles [i](#)

5.3.1 Protein backbone [i](#)

In the following table, the Percentiles column shows the percent Ramachandran outliers of the chain as a percentile score with respect to all X-ray entries followed by that with respect to entries of similar resolution.

The Analysed column shows the number of residues for which the backbone conformation was analysed, and the total number of residues.

Mol	Chain	Analysed	Favoured	Allowed	Outliers	Percentiles	
1	A	339/386 (88%)	327 (96%)	12 (4%)	0	100	100
1	B	337/386 (87%)	330 (98%)	6 (2%)	1 (0%)	41	55
All	All	676/772 (88%)	657 (97%)	18 (3%)	1 (0%)	51	68

All (1) Ramachandran outliers are listed below:

Mol	Chain	Res	Type
1	B	291	TRP

5.3.2 Protein sidechains [i](#)

In the following table, the Percentiles column shows the percent sidechain outliers of the chain as a percentile score with respect to all X-ray entries followed by that with respect to entries of similar resolution.

The Analysed column shows the number of residues for which the sidechain conformation was analysed, and the total number of residues.

Mol	Chain	Analysed	Rotameric	Outliers	Percentiles	
1	A	257/284 (90%)	245 (95%)	12 (5%)	26	42
1	B	256/284 (90%)	239 (93%)	17 (7%)	16	26
All	All	513/568 (90%)	484 (94%)	29 (6%)	20	33

All (29) residues with a non-rotameric sidechain are listed below:

Mol	Chain	Res	Type
1	A	53	ARG
1	A	115	ARG
1	A	118	ARG
1	A	127	VAL
1	A	155	PHE
1	A	167	SER
1	A	181	CYS
1	A	202	ARG
1	A	240	ASP
1	A	268	ARG
1	A	285	LYS
1	A	295	GLN
1	B	32	GLU
1	B	53	ARG
1	B	81	ARG
1	B	118	ARG
1	B	127	VAL
1	B	136	ARG
1	B	155	PHE
1	B	161	GLU
1	B	169	ASP
1	B	181	CYS
1	B	202	ARG
1	B	240	ASP
1	B	259	THR
1	B	268	ARG
1	B	289	ASP
1	B	294	GLU
1	B	295	GLN

Some sidechains can be flipped to improve hydrogen bonding and reduce clashes. All (3) such sidechains are listed below:

Mol	Chain	Res	Type
1	A	288	GLN
1	A	295	GLN
1	B	295	GLN

5.3.3 RNA ⓘ

There are no RNA molecules in this entry.

5.4 Non-standard residues in protein, DNA, RNA chains ⓘ

There are no non-standard protein/DNA/RNA residues in this entry.

5.5 Carbohydrates ⓘ

There are no carbohydrates in this entry.

5.6 Ligand geometry ⓘ

3 ligands are modelled in this entry.

In the following table, the Counts columns list the number of bonds (or angles) for which Mogul statistics could be retrieved, the number of bonds (or angles) that are observed in the model and the number of bonds (or angles) that are defined in the Chemical Component Dictionary. The Link column lists molecule types, if any, to which the group is linked. The Z score for a bond length (or angle) is the number of standard deviations the observed value is removed from the expected value. A bond length (or angle) with $|Z| > 2$ is considered an outlier worth inspection. RMSZ is the root-mean-square of all Z scores of the bond lengths (or angles).

Mol	Type	Chain	Res	Link	Bond lengths			Bond angles		
					Counts	RMSZ	# Z > 2	Counts	RMSZ	# Z > 2
3	CK0	A	402	-	35,35,35	1.35	7 (20%)	47,52,52	1.58	7 (14%)
2	NAI	A	401	-	42,48,48	1.09	3 (7%)	47,73,73	1.88	11 (23%)
2	NAI	B	401	-	42,48,48	1.72	7 (16%)	47,73,73	1.76	11 (23%)

In the following table, the Chirals column lists the number of chiral outliers, the number of chiral centers analysed, the number of these observed in the model and the number defined in the Chemical Component Dictionary. Similar counts are reported in the Torsion and Rings columns. '-' means no outliers of that kind were identified.

Mol	Type	Chain	Res	Link	Chirals	Torsions	Rings
3	CK0	A	402	-	-	0/12/72/72	0/3/3/3

Continued on next page...

Continued from previous page...

Mol	Type	Chain	Res	Link	Chirals	Torsions	Rings
2	NAI	A	401	-	-	6/25/72/72	0/5/5/5
2	NAI	B	401	-	-	4/25/72/72	0/5/5/5

All (17) bond length outliers are listed below:

Mol	Chain	Res	Type	Atoms	Z	Observed(Å)	Ideal(Å)
2	B	401	NAI	O4B-C1B	5.80	1.49	1.41
2	B	401	NAI	C4A-N3A	5.05	1.42	1.35
2	B	401	NAI	C6N-C5N	4.21	1.40	1.33
2	B	401	NAI	C2A-N3A	2.92	1.36	1.32
3	A	402	CK0	CBF-CAS	2.78	1.59	1.53
2	A	401	NAI	C2A-N3A	2.49	1.36	1.32
2	B	401	NAI	C5A-C4A	2.48	1.47	1.40
2	B	401	NAI	C6A-C5A	2.47	1.52	1.43
3	A	402	CK0	O4-C4	2.43	1.48	1.43
3	A	402	CK0	CAN-CAT	-2.43	1.48	1.53
2	A	401	NAI	C6N-C5N	2.41	1.37	1.33
2	A	401	NAI	O4D-C4D	-2.14	1.40	1.45
3	A	402	CK0	OAQ-CBD	2.14	1.47	1.41
3	A	402	CK0	CAN-CAS	-2.13	1.49	1.53
2	B	401	NAI	C8A-N7A	2.10	1.38	1.34
3	A	402	CK0	OAQ-CBB	2.09	1.49	1.44
3	A	402	CK0	O1-CBG	-2.04	1.38	1.43

All (29) bond angle outliers are listed below:

Mol	Chain	Res	Type	Atoms	Z	Observed(°)	Ideal(°)
2	A	401	NAI	O1N-PN-O5D	-5.87	80.48	107.75
2	A	401	NAI	C3N-C7N-N7N	4.51	125.68	117.67
2	B	401	NAI	O4B-C1B-C2B	-4.27	100.69	106.93
2	B	401	NAI	N3A-C2A-N1A	-3.91	122.56	128.68
3	A	402	CK0	O5-C5-C6	-3.79	97.01	106.44
2	B	401	NAI	C5A-C6A-N6A	-3.76	114.64	120.35
2	B	401	NAI	O1N-PN-O2N	3.60	130.05	112.24
3	A	402	CK0	CAV-CAX-CBB	-3.59	103.83	110.24
3	A	402	CK0	CBD-OAO-CBB	-3.47	106.88	113.69
2	A	401	NAI	N3A-C2A-N1A	-3.13	123.78	128.68
2	A	401	NAI	N6A-C6A-N1A	3.07	124.95	118.57
2	A	401	NAI	O7N-C7N-C3N	-3.06	115.14	120.90
2	B	401	NAI	PN-O3-PA	-3.00	122.53	132.83
2	A	401	NAI	C5A-C6A-N6A	-2.93	115.91	120.35
3	A	402	CK0	C3-C4-C5	-2.85	105.15	110.24

Continued on next page...

Continued from previous page...

Mol	Chain	Res	Type	Atoms	Z	Observed(°)	Ideal(°)
2	A	401	NAI	C2D-C3D-C4D	2.81	108.10	102.64
2	B	401	NAI	C2D-C3D-C4D	2.81	108.10	102.64
3	A	402	CK0	OAH-CAX-CAV	-2.73	104.05	110.35
2	A	401	NAI	C1B-N9A-C4A	-2.71	121.88	126.64
3	A	402	CK0	O6-C6-C5	-2.69	102.06	111.29
3	A	402	CK0	OAH-CAX-CBB	2.57	115.67	109.30
2	B	401	NAI	C3N-C7N-N7N	2.53	122.17	117.67
2	A	401	NAI	C1D-N1N-C2N	-2.41	117.10	121.11
2	A	401	NAI	O3D-C3D-C4D	-2.40	104.11	111.05
2	A	401	NAI	C4A-C5A-N7A	-2.38	106.92	109.40
2	B	401	NAI	O4B-C4B-C5B	2.31	116.96	109.37
2	B	401	NAI	O7N-C7N-C3N	-2.24	116.68	120.90
2	B	401	NAI	O3D-C3D-C2D	-2.19	104.75	111.82
2	B	401	NAI	N6A-C6A-N1A	2.15	123.04	118.57

There are no chirality outliers.

All (10) torsion outliers are listed below:

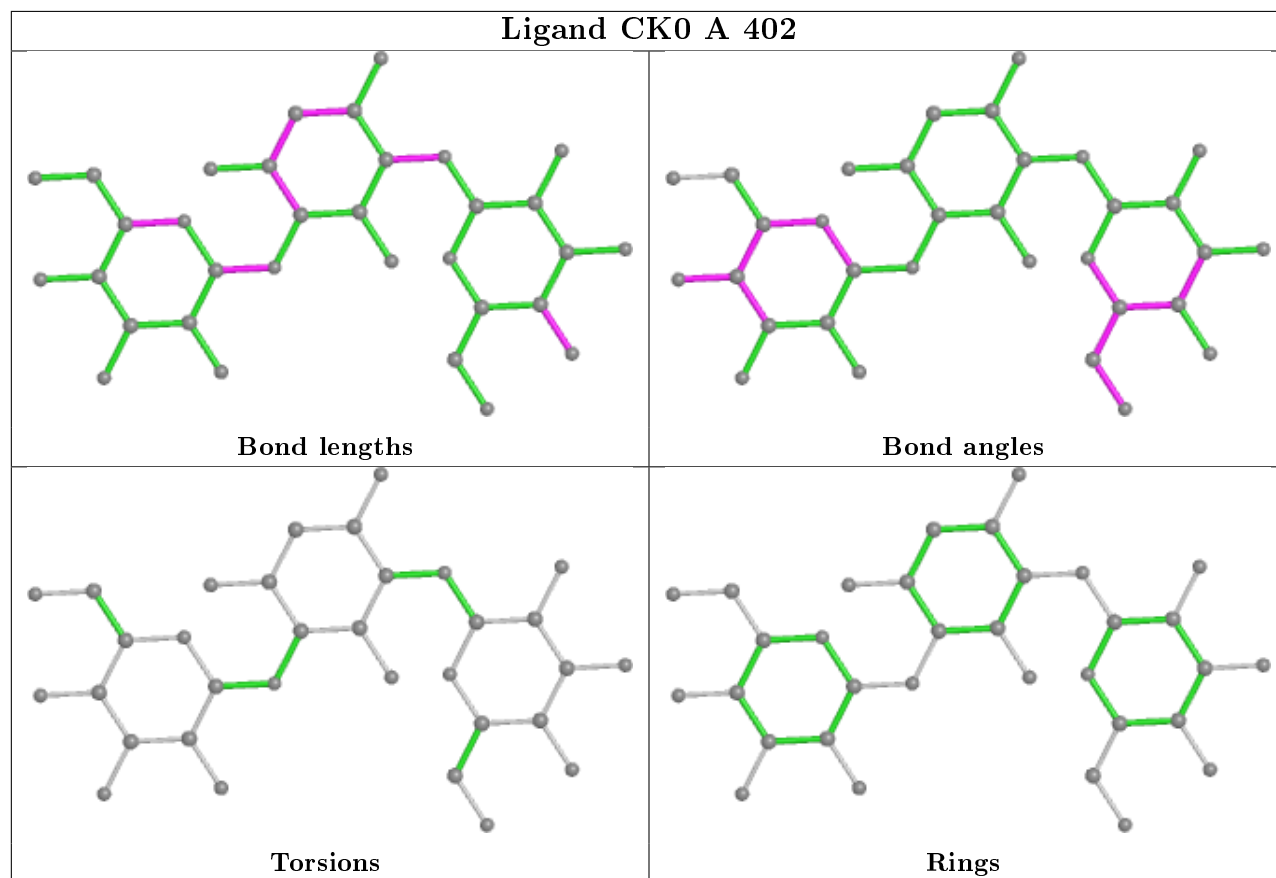
Mol	Chain	Res	Type	Atoms
2	A	401	NAI	C5D-O5D-PN-O3
2	A	401	NAI	C5B-O5B-PA-O3
2	B	401	NAI	O4D-C1D-N1N-C2N
2	A	401	NAI	O4B-C4B-C5B-O5B
2	A	401	NAI	O4D-C1D-N1N-C2N
2	B	401	NAI	C2D-C1D-N1N-C2N
2	B	401	NAI	O4B-C4B-C5B-O5B
2	A	401	NAI	C2D-C1D-N1N-C2N
2	B	401	NAI	O4D-C1D-N1N-C6N
2	A	401	NAI	PN-O3-PA-O2A

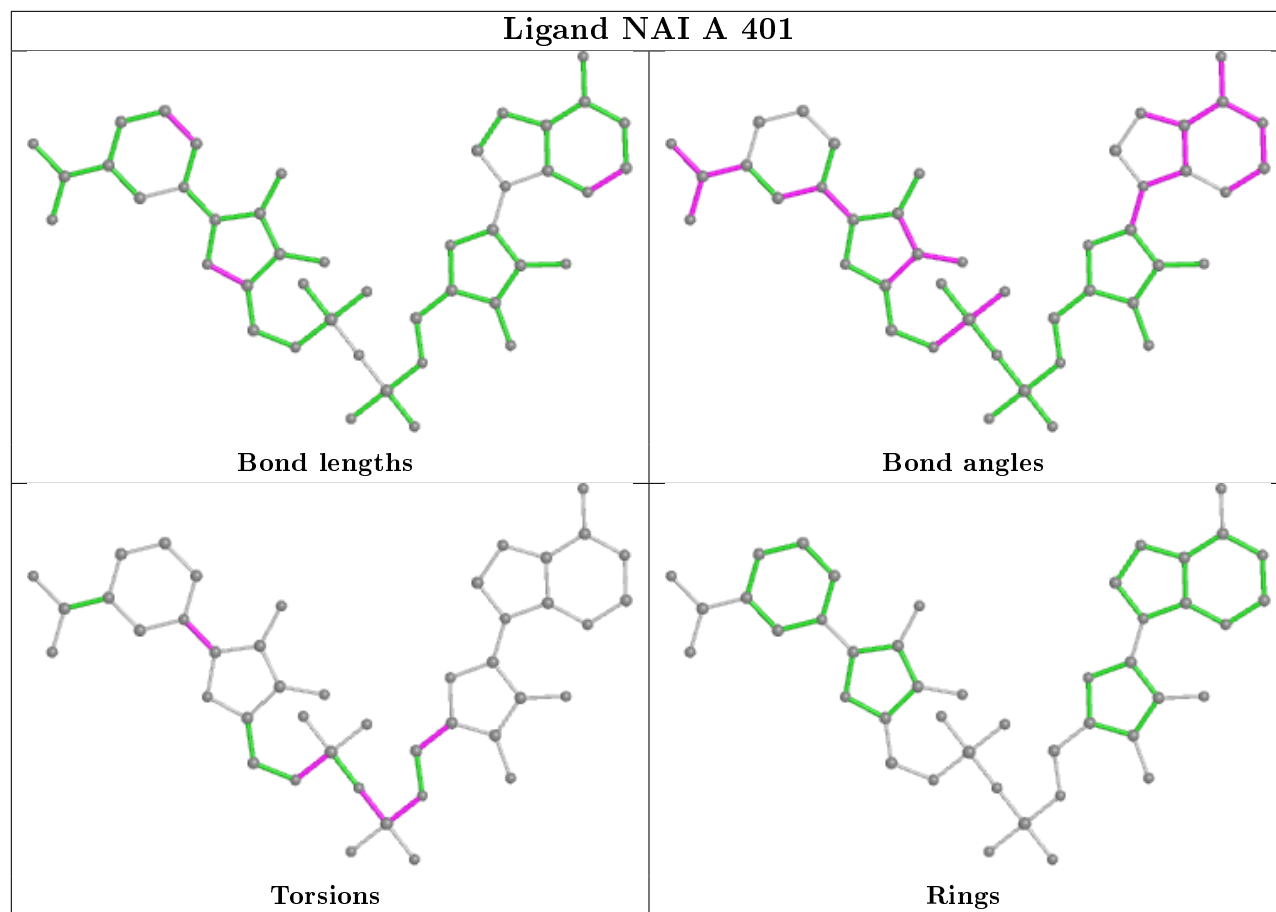
There are no ring outliers.

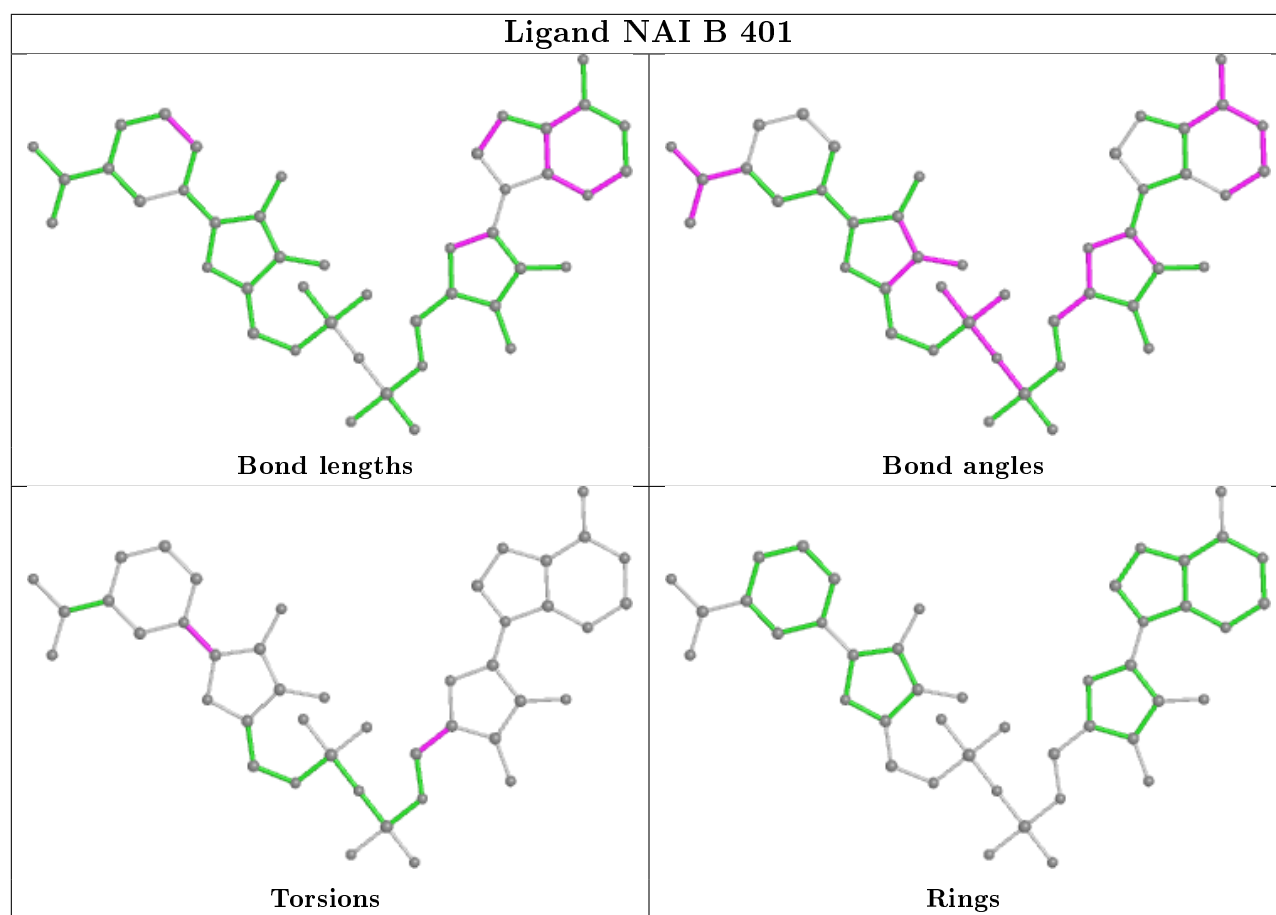
No monomer is involved in short contacts.

The following is a two-dimensional graphical depiction of Mogul quality analysis of bond lengths, bond angles, torsion angles, and ring geometry for all instances of the Ligand of Interest. In addition, ligands with molecular weight > 250 and outliers as shown on the validation Tables will also be included. For torsion angles, if less than 5% of the Mogul distribution of torsion angles is within 10 degrees of the torsion angle in question, then that torsion angle is considered an outlier. Any bond that is central to one or more torsion angles identified as an outlier by Mogul will be highlighted in the graph. For rings, the root-mean-square deviation (RMSD) between the ring in question and similar rings identified by Mogul is calculated over all ring torsion angles. If the average RMSD is greater than 60 degrees and the minimal RMSD between the ring in question and

any Mogul-identified rings is also greater than 60 degrees, then that ring is considered an outlier. The outliers are highlighted in purple. The color gray indicates Mogul did not find sufficient equivalents in the CSD to analyse the geometry.







5.7 Other polymers [i](#)

There are no such residues in this entry.

5.8 Polymer linkage issues [i](#)

There are no chain breaks in this entry.

6 Fit of model and data ⓘ

6.1 Protein, DNA and RNA chains ⓘ

In the following table, the column labelled ‘#RSRZ > 2’ contains the number (and percentage) of RSRZ outliers, followed by percent RSRZ outliers for the chain as percentile scores relative to all X-ray entries and entries of similar resolution. The OWAB column contains the minimum, median, 95th percentile and maximum values of the occupancy-weighted average B-factor per residue. The column labelled ‘Q < 0.9’ lists the number of (and percentage) of residues with an average occupancy less than 0.9.

Mol	Chain	Analysed	<RSRZ>	#RSRZ>2	OWAB(Å ²)	Q<0.9
1	A	342/386 (88%)	0.08	11 (3%) 47 46	38, 69, 98, 128	0
1	B	341/386 (88%)	0.11	17 (4%) 28 27	38, 67, 107, 134	0
All	All	683/772 (88%)	0.09	28 (4%) 37 36	38, 67, 103, 134	0

All (28) RSRZ outliers are listed below:

Mol	Chain	Res	Type	RSRZ
1	A	326	PRO	5.1
1	B	166	ALA	5.1
1	B	58	TRP	3.8
1	B	291	TRP	3.8
1	A	66	ALA	3.3
1	B	285	LYS	3.3
1	B	163	ALA	3.1
1	B	227	ALA	3.0
1	A	143	GLU	2.9
1	A	323	GLN	2.9
1	B	208	PRO	2.9
1	A	86	ALA	2.8
1	A	324	GLY	2.8
1	B	35	HIS	2.6
1	B	40	ALA	2.6
1	B	284	ASP	2.6
1	B	209	PRO	2.5
1	A	209	PRO	2.5
1	A	111	GLU	2.4
1	B	43	ARG	2.4
1	B	283	SER	2.3
1	B	294	GLU	2.3
1	B	56	PRO	2.2
1	A	325	ILE	2.2

Continued on next page...

Continued from previous page...

Mol	Chain	Res	Type	RSRZ
1	A	50	ARG	2.2
1	B	37	LEU	2.1
1	A	67	ILE	2.1
1	B	288	GLN	2.1

6.2 Non-standard residues in protein, DNA, RNA chains [i](#)

There are no non-standard protein/DNA/RNA residues in this entry.

6.3 Carbohydrates [i](#)

There are no carbohydrates in this entry.

6.4 Ligands [i](#)

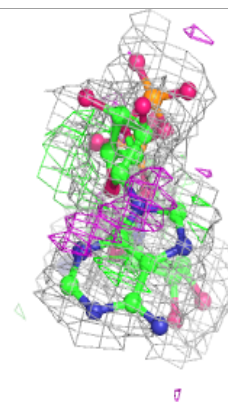
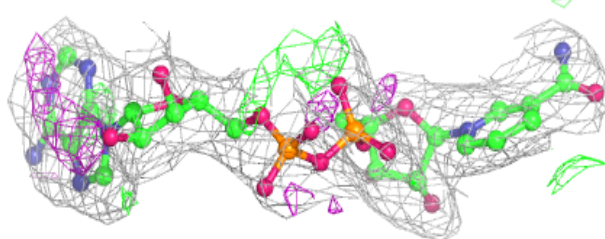
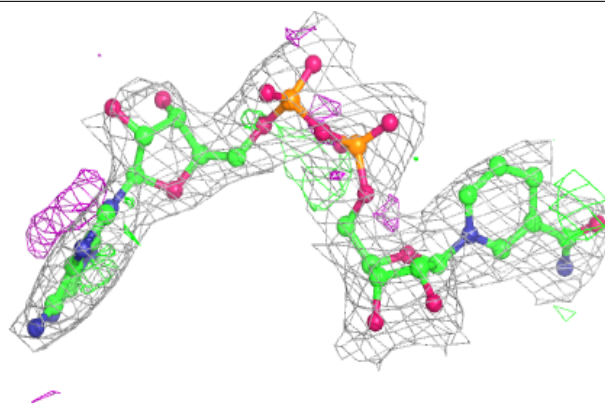
In the following table, the Atoms column lists the number of modelled atoms in the group and the number defined in the chemical component dictionary. The B-factors column lists the minimum, median, 95th percentile and maximum values of B factors of atoms in the group. The column labelled 'Q< 0.9' lists the number of atoms with occupancy less than 0.9.

Mol	Type	Chain	Res	Atoms	RSCC	RSR	B-factors(\AA^2)	Q<0.9
2	NAI	B	401	44/44	0.88	0.16	70,82,90,98	0
3	CK0	A	402	33/33	0.91	0.12	50,56,64,67	0
2	NAI	A	401	44/44	0.98	0.12	47,54,65,66	0

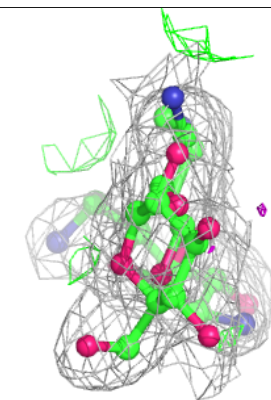
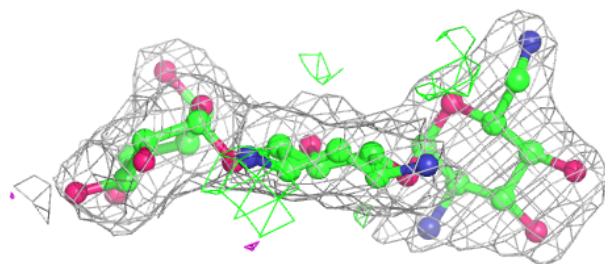
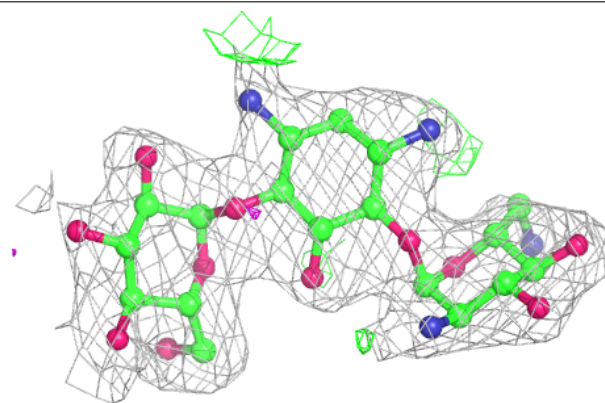
The following is a graphical depiction of the model fit to experimental electron density of all instances of the Ligand of Interest. In addition, ligands with molecular weight > 250 and outliers as shown on the geometry validation Tables will also be included. Each fit is shown from different orientation to approximate a three-dimensional view.

Electron density around NAI B 401:

$2mF_o-DF_c$ (at 0.7 rmsd) in gray
 mF_o-DF_c (at 3 rmsd) in purple (negative)
and green (positive)

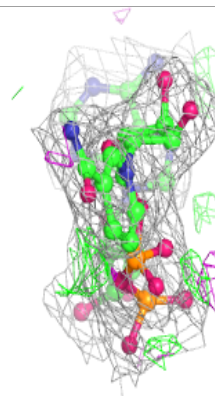
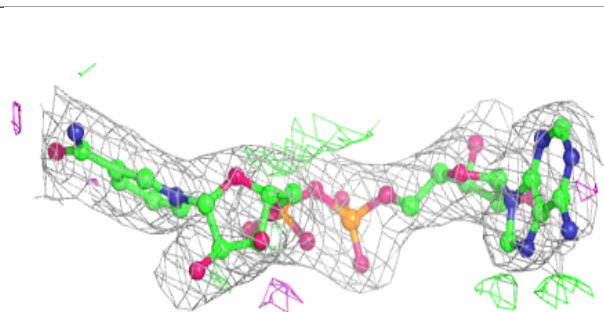
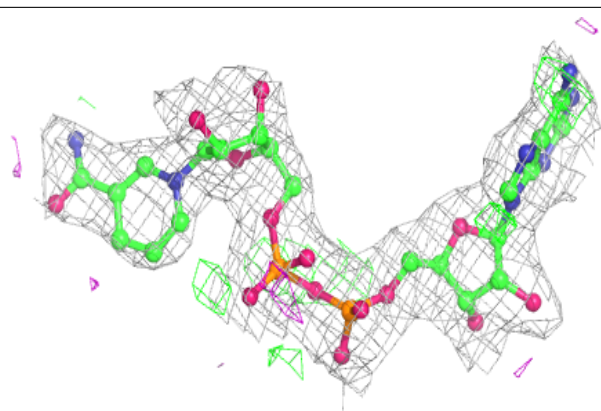
**Electron density around CK0 A 402:**

$2mF_o-DF_c$ (at 0.7 rmsd) in gray
 mF_o-DF_c (at 3 rmsd) in purple (negative)
and green (positive)



Electron density around NAI A 401:

$2mF_o-DF_c$ (at 0.7 rmsd) in gray
 mF_o-DF_c (at 3 rmsd) in purple (negative)
and green (positive)



6.5 Other polymers [i](#)

There are no such residues in this entry.