



# wwPDB X-ray Structure Validation Summary Report ⓘ

Aug 20, 2020 – 08:59 AM BST

PDB ID : 6JWZ  
Title : Crystal structure of Plasmodium falciparum HPPK-DHPS  
S436F/A437G/A613S triple mutant with SDX-DHP  
Authors : Chitnumsub, P.; Jaruwat, A.; Yuthavong, Y.  
Deposited on : 2019-04-21  
Resolution : 2.95 Å(reported)

This is a wwPDB X-ray Structure Validation Summary Report for a publicly released PDB entry.

We welcome your comments at [validation@mail.wwpdb.org](mailto:validation@mail.wwpdb.org)

A user guide is available at

<https://www.wwpdb.org/validation/2017/XrayValidationReportHelp>

with specific help available everywhere you see the ⓘ symbol.

---

The following versions of software and data (see [references ⓘ](#)) were used in the production of this report:

MolProbity : 4.02b-467  
Mogul : 1.8.5 (274361), CSD as541be (2020)  
Xtriage (Phenix) : 1.13  
EDS : 2.13  
buster-report : 1.1.7 (2018)  
Percentile statistics : 20191225.v01 (using entries in the PDB archive December 25th 2019)  
Refmac : 5.8.0158  
CCP4 : 7.0.044 (Gargrove)  
Ideal geometry (proteins) : Engh & Huber (2001)  
Ideal geometry (DNA, RNA) : Parkinson et al. (1996)  
Validation Pipeline (wwPDB-VP) : 2.13

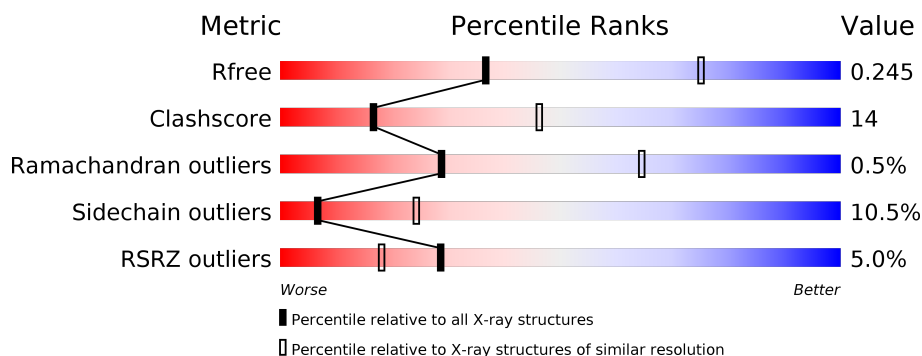
# 1 Overall quality at a glance

The following experimental techniques were used to determine the structure:

*X-RAY DIFFRACTION*

The reported resolution of this entry is 2.95 Å.

Percentile scores (ranging between 0-100) for global validation metrics of the entry are shown in the following graphic. The table shows the number of entries on which the scores are based.



Metric	Whole archive (#Entries)	Similar resolution (#Entries, resolution range(Å))
$R_{free}$	130704	3104 (3.00-2.92)
Clashscore	141614	3462 (3.00-2.92)
Ramachandran outliers	138981	3340 (3.00-2.92)
Sidechain outliers	138945	3343 (3.00-2.92)
RSRZ outliers	127900	2986 (3.00-2.92)

The table below summarises the geometric issues observed across the polymeric chains and their fit to the electron density. The red, orange, yellow and green segments on the lower bar indicate the fraction of residues that contain outliers for  $\geq 3$ , 2, 1 and 0 types of geometric quality criteria respectively. A grey segment represents the fraction of residues that are not modelled. The numeric value for each fraction is indicated below the corresponding segment, with a dot representing fractions  $\leq 5\%$ . The upper red bar (where present) indicates the fraction of residues that have poor fit to the electron density. The numeric value is given above the bar.

Mol	Chain	Length	Quality of chain
1	A	728	<div> <div>4%</div> <div> <div></div> <div>49%</div> <div>25%</div> <div>•</div> <div>24%</div> </div> </div>
1	B	728	<div> <div>4%</div> <div> <div></div> <div>49%</div> <div>25%</div> <div>•</div> <div>22%</div> </div> </div>

## 2 Entry composition

There are 9 unique types of molecules in this entry. The entry contains 9505 atoms, of which 0 are hydrogens and 0 are deuteriums.

In the tables below, the ZeroOcc column contains the number of atoms modelled with zero occupancy, the AltConf column contains the number of residues with at least one atom in alternate conformation and the Trace column contains the number of residues modelled with at most 2 atoms.

- Molecule 1 is a protein called 7,8-dihydro-6-hydroxymethylpterin pyrophosphokinase-dihydropteroate synthase.

Mol	Chain	Residues	Atoms					ZeroOcc	AltConf	Trace
1	A	550	Total	C	N	O	S	0	0	0
			4551	2925	756	847	23			
1	B	565	Total	C	N	O	S	0	0	0
			4655	2995	768	869	23			

There are 50 discrepancies between the modelled and reference sequences:

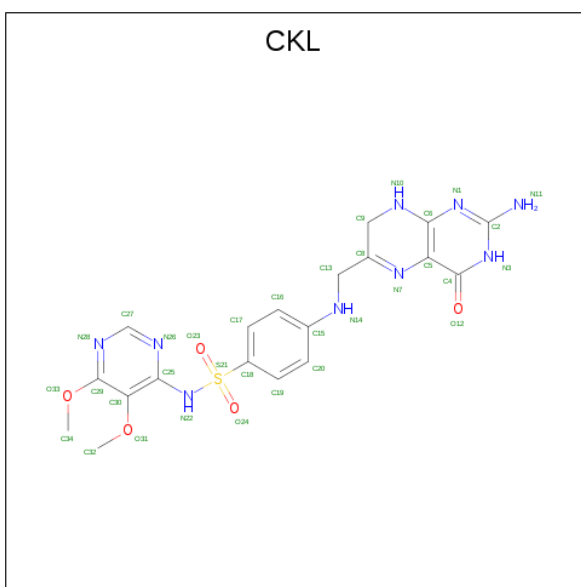
Chain	Residue	Modelled	Actual	Comment	Reference
A	436	PHE	SER	engineered mutation	UNP Q25704
A	437	GLY	ALA	engineered mutation	UNP Q25704
A	613	SER	ALA	engineered mutation	UNP Q25704
A	707	LYS	-	expression tag	UNP Q25704
A	708	ASP	-	expression tag	UNP Q25704
A	709	PRO	-	expression tag	UNP Q25704
A	710	ASN	-	expression tag	UNP Q25704
A	711	SER	-	expression tag	UNP Q25704
A	712	SER	-	expression tag	UNP Q25704
A	713	SER	-	expression tag	UNP Q25704
A	714	VAL	-	expression tag	UNP Q25704
A	715	ASP	-	expression tag	UNP Q25704
A	716	LYS	-	expression tag	UNP Q25704
A	717	LEU	-	expression tag	UNP Q25704
A	718	ALA	-	expression tag	UNP Q25704
A	719	ALA	-	expression tag	UNP Q25704
A	720	ALA	-	expression tag	UNP Q25704
A	721	LEU	-	expression tag	UNP Q25704
A	722	GLU	-	expression tag	UNP Q25704
A	723	HIS	-	expression tag	UNP Q25704
A	724	HIS	-	expression tag	UNP Q25704
A	725	HIS	-	expression tag	UNP Q25704
A	726	HIS	-	expression tag	UNP Q25704
A	727	HIS	-	expression tag	UNP Q25704

*Continued on next page...*

*Continued from previous page...*

Chain	Residue	Modelled	Actual	Comment	Reference
A	728	HIS	-	expression tag	UNP Q25704
B	436	PHE	SER	engineered mutation	UNP Q25704
B	437	GLY	ALA	engineered mutation	UNP Q25704
B	613	SER	ALA	engineered mutation	UNP Q25704
B	707	LYS	-	expression tag	UNP Q25704
B	708	ASP	-	expression tag	UNP Q25704
B	709	PRO	-	expression tag	UNP Q25704
B	710	ASN	-	expression tag	UNP Q25704
B	711	SER	-	expression tag	UNP Q25704
B	712	SER	-	expression tag	UNP Q25704
B	713	SER	-	expression tag	UNP Q25704
B	714	VAL	-	expression tag	UNP Q25704
B	715	ASP	-	expression tag	UNP Q25704
B	716	LYS	-	expression tag	UNP Q25704
B	717	LEU	-	expression tag	UNP Q25704
B	718	ALA	-	expression tag	UNP Q25704
B	719	ALA	-	expression tag	UNP Q25704
B	720	ALA	-	expression tag	UNP Q25704
B	721	LEU	-	expression tag	UNP Q25704
B	722	GLU	-	expression tag	UNP Q25704
B	723	HIS	-	expression tag	UNP Q25704
B	724	HIS	-	expression tag	UNP Q25704
B	725	HIS	-	expression tag	UNP Q25704
B	726	HIS	-	expression tag	UNP Q25704
B	727	HIS	-	expression tag	UNP Q25704
B	728	HIS	-	expression tag	UNP Q25704

- Molecule 2 is 4-[(2-azanyl-4-oxidanylidene-7,8-dihydro-3 {H}-pteridin-6-yl)methylamino]-{N}-(5,6-dimethoxypyrimidin-4-yl)benzenesulfonamide (three-letter code: CKL) (formula: C<sub>19</sub>H<sub>21</sub>N<sub>9</sub>O<sub>5</sub>S).



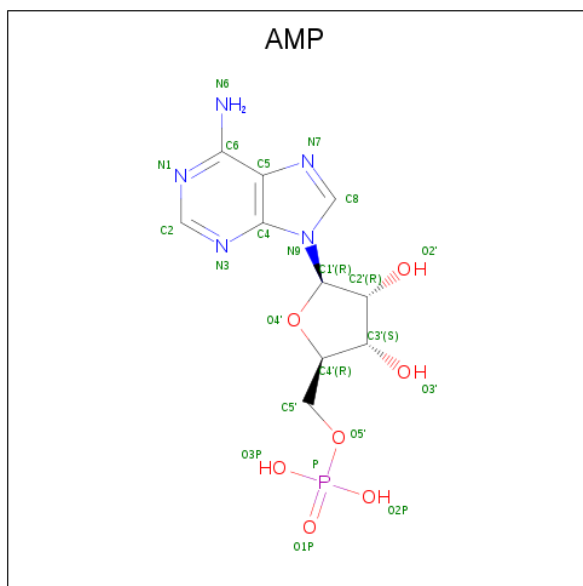
Mol	Chain	Residues	Atoms					ZeroOcc	AltConf
2	A	1	Total	C	N	O	S	0	0
			34	19	9	5	1		
2	B	1	Total	C	N	O	S	0	0
			34	19	9	5	1		

- Molecule 3 is PHOSPHATE ION (three-letter code: PO4) (formula: O<sub>4</sub>P).



Mol	Chain	Residues	Atoms			ZeroOcc	AltConf
3	A	1	Total	O	P	0	0
			5	4	1		
3	B	1	Total	O	P	0	0
			5	4	1		

- Molecule 4 is ADENOSINE MONOPHOSPHATE (three-letter code: AMP) (formula:  $C_{10}H_{14}N_5O_7P$ ).



Mol	Chain	Residues	Atoms					ZeroOcc	AltConf
4	A	1	Total	C	N	O	P	0	0
			23	10	5	7	1		
4	B	1	Total	C	N	O	P	0	0
			23	10	5	7	1		

- Molecule 5 is MAGNESIUM ION (three-letter code: MG) (formula: Mg).

Mol	Chain	Residues	Atoms		ZeroOcc	AltConf
5	B	1	Total	Mg	0	0
			1	1		
5	A	1	Total	Mg	0	0
			1	1		

- Molecule 6 is CALCIUM ION (three-letter code: CA) (formula: Ca).

Mol	Chain	Residues	Atoms		ZeroOcc	AltConf
6	B	1	Total	Ca	0	0
			1	1		
6	A	1	Total	Ca	0	0
			1	1		

- Molecule 7 is ACETATE ION (three-letter code: ACT) (formula:  $C_2H_3O_2$ ).



Mol	Chain	Residues	Atoms			ZeroOcc	AltConf
7	A	1	Total	C	O	0	0
			4	2	2		
7	B	1	Total	C	O	0	0
			4	2	2		

- Molecule 8 is DI(HYDROXYETHYL)ETHER (three-letter code: PEG) (formula:  $C_4H_{10}O_3$ ).



Mol	Chain	Residues	Atoms			ZeroOcc	AltConf
8	A	1	Total	C	O	0	0
			7	4	3		
8	A	1	Total	C	O	0	0
			7	4	3		

- Molecule 9 is water.

Mol	Chain	Residues	Atoms		ZeroOcc	AltConf
9	A	79	Total 79	O 79	0	0
9	B	70	Total 70	O 70	0	0



These plots are drawn for all protein, RNA, DNA and oligosaccharide chains in the entry. The first graphic for a chain summarises the proportions of the various outlier classes displayed in the second graphic. The second graphic shows the sequence view annotated by issues in geometry and electron density. Residues are color-coded according to the number of geometric quality criteria for which they contain at least one outlier: green = 0, yellow = 1, orange = 2 and red = 3 or more. A red dot above a residue indicates a poor fit to the electron density ( $RSRZ > 2$ ). Stretches of 2 or more consecutive residues without any outlier are shown as a green connector. Residues present in the sample, but not in the model, are shown in grey.

- Chain A:
- 
- 4%
- 49%
- 25%
- 24%
- 4%
- 49%
- 25%
- 24%
- MET  
GLU  
ASP  
THR  
ILE  
Q5  
S10  
E11  
E12  
N13  
K14  
L20  
N21  
T24  
N25  
D26  
R27  
L32  
E35  
T36  
A37  
L38  
R39  
L40  
V41  
L45  
N49  
L51  
L53  
L54  
V55  
E56  
T57  
E60  
TTR  
ILE  
VAL  
LEU  
ASP  
L50  
L51  
L52  
L53  
L54  
L55  
L56  
L57  
L58  
L59  
L60  
L61  
L62  
L63  
L64  
L65  
L66  
L67  
L68  
L69  
L70  
L71  
L72  
L73  
L74  
L75  
L76  
L77  
L78  
L79  
L80  
L81  
L82  
L83  
L84  
L85  
L86  
L87  
L88  
L89  
L90  
L91  
L92  
L93  
L94  
L95  
L96  
L97  
L98  
L99  
L100  
L101  
L102  
L103  
L104  
L105  
L106  
L107  
L108  
L109  
L110  
L111  
L112  
L113  
L114  
L115  
L116  
L117  
L118  
L119  
L120  
L121  
L122  
L123  
L124  
L125  
L126  
L127  
L128  
L129  
L130  
L131  
L132  
L133  
L134  
L135  
L136  
L137  
L138  
L139  
L140  
L141  
L142  
L143  
L144  
L145  
L146  
L147  
L148  
L149  
L150  
L151  
L152  
L153  
L154  
L155  
L156  
L157  
L158  
L159  
L160  
L161  
L162  
L163  
L164  
L165  
L166  
L167  
L168  
L169  
L170  
L171  
L172  
L173  
L174  
L175  
L176  
L177  
L178  
L179  
L180  
L181  
L182  
L183  
L184  
L185  
L186  
L187  
L188  
L189  
L190  
L191  
L192  
L193  
L194  
L195  
L196  
L197  
L198  
L199  
L200  
L201  
L202  
L203  
L204  
L205  
L206  
L207  
L208  
L209  
L210  
L211  
L212  
L213  
L214  
L215  
L216  
L217  
L218  
L219  
L220  
L221  
L222  
L223  
L224  
L225  
L226  
L227  
L228  
L229  
L230  
L231  
L232  
L233  
L234  
L235  
L236  
L237  
L238  
L239  
L240  
L241  
L242  
L243  
L244  
L245  
L246  
L247  
L248  
L249  
L250  
L251  
L252  
L253  
L254  
L255  
L256  
L257  
L258  
L259  
L260  
L261  
L262  
L263  
L264  
L265  
L266  
L267  
L268  
L269  
L270  
L271  
L272  
L273  
L274  
L275  
L276  
L277  
L278  
L279  
L280  
L281  
L282  
L283  
L284  
L285  
L286  
L287  
L288  
L289  
L290  
L291  
L292  
L293  
L294  
L295  
L296  
L297  
L298  
L299  
L300  
L301  
L302  
L303  
L304  
L305  
L306  
L307  
L308  
L309  
L310  
L311  
L312  
L313  
L314  
L315  
L316  
L317  
L318  
L319  
L320  
L321  
L322  
L323  
L324  
L325  
L326  
L327  
L328  
L329  
L330  
L331  
L332  
L333  
L334  
L335  
L336  
L337  
L338  
L339  
L340  
L341  
L342  
L343  
L344  
L345  
L346  
L347  
L348  
L349  
L350  
L351  
L352  
L353  
L354  
L355  
L356  
L357  
L358  
L359  
L360  
L361  
L362  
L363  
L364  
L365  
L366  
L367  
L368  
L369  
L370  
L371  
L372  
L373  
L374  
L375  
L376  
L377  
L378  
L379  
L380  
L381  
L382  
L383  
L384  
L385  
L386  
L387  
L388  
L389  
L390  
L391  
L392  
L393  
L394  
L395  
L396  
L397  
L398  
L399  
L400  
L401  
L402  
L403  
L404  
L405  
L406  
L407  
L408  
L409  
L410  
L411  
L412  
L413  
L414  
L415  
L416  
L417  
L418  
L419  
L420  
L421  
L422  
L423  
L424  
L425  
L426  
L427  
L428  
L429  
L430  
L431  
L432  
L433  
L434  
L435  
L436  
L437  
L438  
L439  
L440  
L441  
L442  
L443  
L444  
L445  
L446  
L447  
L448  
L449  
L450  
L451  
L452  
L453  
L454  
L455  
L456  
L457  
L458  
L459  
L460  
L461  
L462  
L463  
L464  
L465  
L466  
L467  
L468  
L469  
L470  
L471  
L472  
L473  
L474  
L475  
L476  
L477  
L478  
L479  
L480  
L481  
L482  
L483  
L484  
L485  
L486  
L487  
L488  
L489  
L490  
L491  
L492  
L493  
L494  
L495  
L496  
L497  
L498  
L499  
L500  
L501  
L502  
L503  
L504  
L505  
L506  
L507  
L508  
L509  
L510  
L511  
L512  
L513  
L514  
L515  
L516  
L517  
L518  
L519  
L520  
L521  
L522  
L523  
L524  
L525  
L526  
L527  
L528  
L529  
L530  
L531  
L532  
L533  
L534  
L535  
L536  
L537  
L538  
L539  
L540  
L541  
L542  
L543  
L544  
L545  
L546  
L547  
L548  
L549  
L550  
L551  
L552  
L553  
L554  
L555  
L556  
L557  
L558  
L559  
L560  
L561  
L562  
L563  
L564  
L565  
L566  
L567  
L568  
L569  
L570  
L571  
L572  
L573  
L574  
L575  
L576  
L577  
L578  
L579  
L580  
L581  
L582  
L583  
L584  
L585  
L586  
L587  
L588  
L589  
L590  
L591  
L592  
L593  
L594  
L595  
L596  
L597  
L598  
L599  
L600  
L601  
L602  
L603  
L604  
L605  
L606  
L607  
L608  
L609  
L610  
L611  
L612  
L613  
L614  
L615  
L616  
L617  
L618  
L619  
L620  
L621  
L622  
L623  
L624  
L625  
L626  
L627  
L628  
L629  
L630  
L631  
L632  
L633  
L634  
L635  
L636  
L637  
L638  
L639  
L640  
L641  
L642  
L643  
L644  
L645  
L646  
L647  
L648  
L649  
L650  
L651  
L652  
L653  
L654  
L655  
L656  
L657  
L658  
L659  
L660  
L661  
L662  
L663  
L664  
L665  
L666  
L667  
L668  
L669  
L670  
L671  
L672  
L673  
L674  
L675  
L676  
L677  
L678  
L679  
L680  
L681  
L

- Molecule 1: 7,8-dihydro-6-hydroxymethylpterin pyrophosphokinase-dihydropteroate synthase

Frequency	Percentage
Very often	4%
Often	49%
Sometimes	25%
Never	22%



## 4 Data and refinement statistics

Property	Value	Source
Space group	P 21 21 21	Depositor
Cell constants a, b, c, $\alpha$ , $\beta$ , $\gamma$	100.20Å 136.83Å 138.69Å 90.00° 90.00° 90.00°	Depositor
Resolution (Å)	29.57 – 2.95 29.55 – 2.95	Depositor EDS
% Data completeness (in resolution range)	89.3 (29.57-2.95) 89.4 (29.55-2.95)	Depositor EDS
$R_{merge}$	0.06	Depositor
$R_{sym}$	(Not available)	Depositor
$\langle I/\sigma(I) \rangle$ <sup>1</sup>	6.07 (at 2.95Å)	Xtriage
Refinement program	REFMAC 5.8.0222	Depositor
R, $R_{free}$	0.194 , 0.255 0.189 , 0.245	Depositor DCC
$R_{free}$ test set	3627 reflections (9.98%)	wwPDB-VP
Wilson B-factor (Å <sup>2</sup> )	44.2	Xtriage
Anisotropy	0.264	Xtriage
Bulk solvent $k_{sol}$ (e/Å <sup>3</sup> ), $B_{sol}$ (Å <sup>2</sup> )	0.31 , 56.6	EDS
L-test for twinning <sup>2</sup>	$\langle  L  \rangle = 0.49$ , $\langle L^2 \rangle = 0.33$	Xtriage
Estimated twinning fraction	0.008 for -h,l,k	Xtriage
$F_o, F_c$ correlation	0.92	EDS
Total number of atoms	9505	wwPDB-VP
Average B, all atoms (Å <sup>2</sup> )	49.0	wwPDB-VP

Xtriage's analysis on translational NCS is as follows: *The largest off-origin peak in the Patterson function is 2.94% of the height of the origin peak. No significant pseudotranslation is detected.*

<sup>1</sup>Intensities estimated from amplitudes.

<sup>2</sup>Theoretical values of  $\langle |L| \rangle$ ,  $\langle L^2 \rangle$  for acentric reflections are 0.5, 0.333 respectively for untwinned datasets, and 0.375, 0.2 for perfectly twinned datasets.

## 5 Model quality [i](#)

### 5.1 Standard geometry [i](#)

Bond lengths and bond angles in the following residue types are not validated in this section: MG, CKL, PO4, ACT, AMP, PEG, CA

The Z score for a bond length (or angle) is the number of standard deviations the observed value is removed from the expected value. A bond length (or angle) with  $|Z| > 5$  is considered an outlier worth inspection. RMSZ is the root-mean-square of all Z scores of the bond lengths (or angles).

Mol	Chain	Bond lengths		Bond angles	
		RMSZ	# Z  >5	RMSZ	# Z  >5
1	A	0.30	0/4620	0.69	0/6226
1	B	0.29	0/4727	0.68	0/6372
All	All	0.29	0/9347	0.68	0/12598

Chiral center outliers are detected by calculating the chiral volume of a chiral center and verifying if the center is modelled as a planar moiety or with the opposite hand. A planarity outlier is detected by checking planarity of atoms in a peptide group, atoms in a mainchain group or atoms of a sidechain that are expected to be planar.

Mol	Chain	#Chirality outliers	#Planarity outliers
1	A	0	2
1	B	0	1
All	All	0	3

There are no bond length outliers.

There are no bond angle outliers.

There are no chirality outliers.

All (3) planarity outliers are listed below:

Mol	Chain	Res	Type	Group
1	A	117	GLY	Peptide
1	A	374	ARG	Sidechain
1	B	417	ARG	Sidechain

### 5.2 Too-close contacts [i](#)

In the following table, the Non-H and H(model) columns list the number of non-hydrogen atoms and hydrogen atoms in the chain respectively. The H(added) column lists the number of hydrogen atoms added and optimized by MolProbity. The Clashes column lists the number of clashes within

the asymmetric unit, whereas Symm-Clashes lists symmetry related clashes.

Mol	Chain	Non-H	H(model)	H(added)	Clashes	Symm-Clashes
1	A	4551	0	4660	117	0
1	B	4655	0	4754	154	0
2	A	34	0	0	0	0
2	B	34	0	0	1	0
3	A	5	0	0	0	0
3	B	5	0	0	0	0
4	A	23	0	12	0	0
4	B	23	0	12	1	0
5	A	1	0	0	0	0
5	B	1	0	0	0	0
6	A	1	0	0	0	0
6	B	1	0	0	0	0
7	A	4	0	3	0	0
7	B	4	0	3	0	0
8	A	14	0	20	1	0
9	A	79	0	0	4	0
9	B	70	0	0	3	0
All	All	9505	0	9464	268	0

The all-atom clashscore is defined as the number of clashes found per 1000 atoms (including hydrogen atoms). The all-atom clashscore for this structure is 14.

The worst 5 of 268 close contacts within the same asymmetric unit are listed below, sorted by their clash magnitude.

Atom-1	Atom-2	Interatomic distance (Å)	Clash overlap (Å)
1:A:107:CYS:SG	1:A:171:LYS:HE2	1.78	1.21
1:B:107:CYS:SG	1:B:171:LYS:NZ	2.25	1.10
1:A:107:CYS:SG	1:A:171:LYS:CE	2.58	0.91
1:A:169:VAL:HG23	1:A:336:MET:HE3	1.52	0.91
1:B:505:SER:O	1:B:508:THR:HB	1.71	0.91

There are no symmetry-related clashes.

## 5.3 Torsion angles ⓘ

### 5.3.1 Protein backbone ⓘ

In the following table, the Percentiles column shows the percent Ramachandran outliers of the chain as a percentile score with respect to all X-ray entries followed by that with respect to entries of similar resolution.

The Analysed column shows the number of residues for which the backbone conformation was analysed, and the total number of residues.

Mol	Chain	Analysed	Favoured	Allowed	Outliers	Percentiles	
1	A	534/728 (73%)	503 (94%)	30 (6%)	1 (0%)	47	79
1	B	551/728 (76%)	519 (94%)	28 (5%)	4 (1%)	22	56
All	All	1085/1456 (74%)	1022 (94%)	58 (5%)	5 (0%)	29	64

All (5) Ramachandran outliers are listed below:

Mol	Chain	Res	Type
1	B	466	ILE
1	A	365	ASN
1	B	320	HIS
1	B	207	ILE
1	B	535	PRO

### 5.3.2 Protein sidechains ⓘ

In the following table, the Percentiles column shows the percent sidechain outliers of the chain as a percentile score with respect to all X-ray entries followed by that with respect to entries of similar resolution.

The Analysed column shows the number of residues for which the sidechain conformation was analysed, and the total number of residues.

Mol	Chain	Analysed	Rotameric	Outliers	Percentiles	
1	A	526/697 (76%)	477 (91%)	49 (9%)	9	30
1	B	536/697 (77%)	473 (88%)	63 (12%)	5	20
All	All	1062/1394 (76%)	950 (90%)	112 (10%)	7	24

5 of 112 residues with a non-rotameric sidechain are listed below:

Mol	Chain	Res	Type
1	B	8	ILE
1	B	134	LEU
1	B	617	ASN
1	B	29	ASN
1	B	95	SER

Some sidechains can be flipped to improve hydrogen bonding and reduce clashes. 5 of 20 such sidechains are listed below:

Mol	Chain	Res	Type
1	B	137	ASN
1	B	165	ASN
1	B	396	ASN
1	B	100	ASN
1	B	116	ASN

### 5.3.3 RNA [i](#)

There are no RNA molecules in this entry.

### 5.4 Non-standard residues in protein, DNA, RNA chains [i](#)

There are no non-standard protein/DNA/RNA residues in this entry.

### 5.5 Carbohydrates [i](#)

There are no monosaccharides in this entry.

### 5.6 Ligand geometry [i](#)

Of 14 ligands modelled in this entry, 4 are monoatomic - leaving 10 for Mogul analysis.

In the following table, the Counts columns list the number of bonds (or angles) for which Mogul statistics could be retrieved, the number of bonds (or angles) that are observed in the model and the number of bonds (or angles) that are defined in the Chemical Component Dictionary. The Link column lists molecule types, if any, to which the group is linked. The Z score for a bond length (or angle) is the number of standard deviations the observed value is removed from the expected value. A bond length (or angle) with  $|Z| > 2$  is considered an outlier worth inspection. RMSZ is the root-mean-square of all Z scores of the bond lengths (or angles).

Mol	Type	Chain	Res	Link	Bond lengths			Bond angles		
					Counts	RMSZ	# $ Z  > 2$	Counts	RMSZ	# $ Z  > 2$
3	PO4	A	802	-	4,4,4	0.26	0	6,6,6	1.31	1 (16%)
2	CKL	A	801	-	31,37,37	2.06	5 (16%)	36,53,53	2.90	12 (33%)
8	PEG	A	808	-	6,6,6	0.78	0	5,5,5	0.59	0
4	AMP	A	803	5	22,25,25	1.04	2 (9%)	25,38,38	1.38	2 (8%)
4	AMP	B	803	5	22,25,25	0.99	1 (4%)	25,38,38	1.30	3 (12%)
3	PO4	B	802	-	4,4,4	0.81	0	6,6,6	1.11	1 (16%)
8	PEG	A	807	-	6,6,6	0.59	0	5,5,5	0.43	0
7	ACT	A	806	-	1,3,3	1.25	0	0,3,3	0.00	-

Mol	Type	Chain	Res	Link	Bond lengths			Bond angles		
					Counts	RMSZ	# Z  > 2	Counts	RMSZ	# Z  > 2
7	ACT	B	806	-	1,3,3	2.14	1 (100%)	0,3,3	0.00	-
2	CKL	B	801	-	31,37,37	1.99	4 (12%)	36,53,53	2.97	15 (41%)

In the following table, the Chirals column lists the number of chiral outliers, the number of chiral centers analysed, the number of these observed in the model and the number defined in the Chemical Component Dictionary. Similar counts are reported in the Torsion and Rings columns. '-' means no outliers of that kind were identified.

Mol	Type	Chain	Res	Link	Chirals	Torsions	Rings
2	CKL	A	801	-	-	8/18/29/29	0/4/4/4
8	PEG	A	808	-	-	3/4/4/4	-
4	AMP	A	803	5	-	1/6/26/26	0/3/3/3
4	AMP	B	803	5	-	5/6/26/26	0/3/3/3
8	PEG	A	807	-	-	1/4/4/4	-
2	CKL	B	801	-	-	9/18/29/29	0/4/4/4

The worst 5 of 13 bond length outliers are listed below:

Mol	Chain	Res	Type	Atoms	Z	Observed(Å)	Ideal(Å)
2	A	801	CKL	C18-S21	-9.66	1.61	1.76
2	B	801	CKL	C18-S21	-9.51	1.61	1.76
2	A	801	CKL	O33-C29	2.87	1.39	1.35
2	A	801	CKL	C5-C6	2.74	1.49	1.41
4	A	803	AMP	O4'-C1'	2.71	1.44	1.41

The worst 5 of 34 bond angle outliers are listed below:

Mol	Chain	Res	Type	Atoms	Z	Observed(°)	Ideal(°)
2	B	801	CKL	O23-S21-O24	-10.80	106.27	119.55
2	A	801	CKL	C18-S21-N22	8.29	117.26	106.83
2	A	801	CKL	O23-S21-O24	-8.07	109.62	119.55
2	A	801	CKL	C34-O33-C29	6.13	123.28	117.21
2	A	801	CKL	N26-C27-N28	-5.09	120.64	128.60

There are no chirality outliers.

5 of 27 torsion outliers are listed below:

Mol	Chain	Res	Type	Atoms
2	A	801	CKL	C30-C29-O33-C34
2	A	801	CKL	N28-C29-O33-C34

*Continued on next page...*



*Continued from previous page...*

Mol	Chain	Res	Type	Atoms
4	B	803	AMP	C5'-O5'-P-O1P
4	B	803	AMP	C5'-O5'-P-O2P
4	B	803	AMP	C5'-O5'-P-O3P

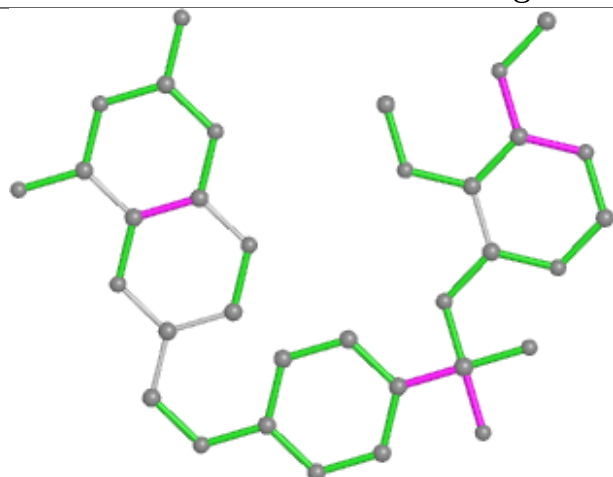
There are no ring outliers.

3 monomers are involved in 3 short contacts:

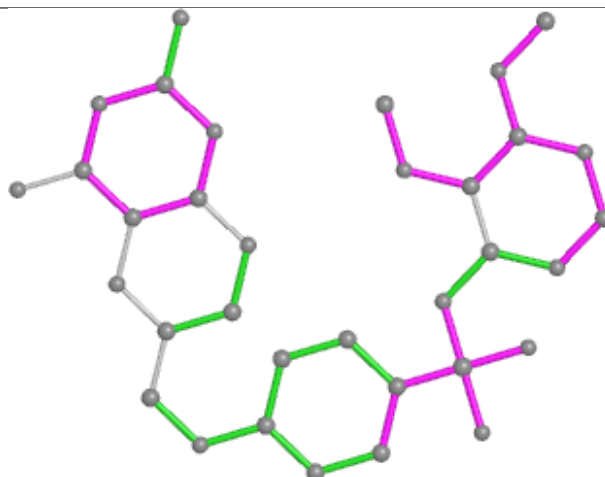
Mol	Chain	Res	Type	Clashes	Symm-Clashes
8	A	808	PEG	1	0
4	B	803	AMP	1	0
2	B	801	CKL	1	0

The following is a two-dimensional graphical depiction of Mogul quality analysis of bond lengths, bond angles, torsion angles, and ring geometry for all instances of the Ligand of Interest. In addition, ligands with molecular weight > 250 and outliers as shown on the validation Tables will also be included. For torsion angles, if less than 5% of the Mogul distribution of torsion angles is within 10 degrees of the torsion angle in question, then that torsion angle is considered an outlier. Any bond that is central to one or more torsion angles identified as an outlier by Mogul will be highlighted in the graph. For rings, the root-mean-square deviation (RMSD) between the ring in question and similar rings identified by Mogul is calculated over all ring torsion angles. If the average RMSD is greater than 60 degrees and the minimal RMSD between the ring in question and any Mogul-identified rings is also greater than 60 degrees, then that ring is considered an outlier. The outliers are highlighted in purple. The color gray indicates Mogul did not find sufficient equivalents in the CSD to analyse the geometry.

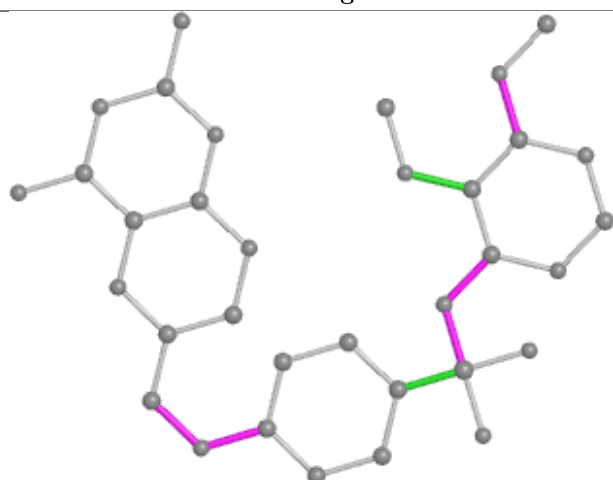
## Ligand CKL A 801



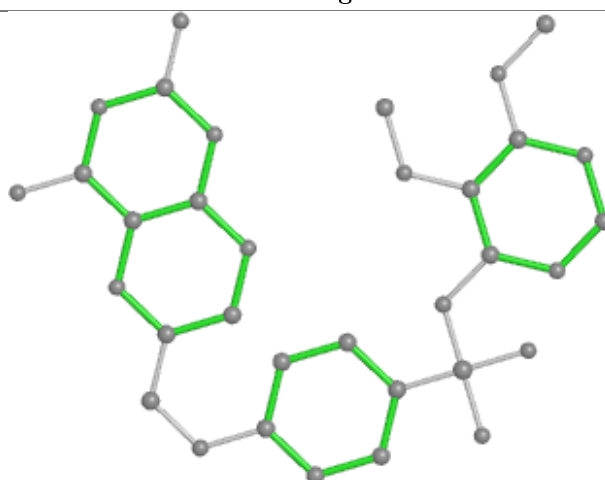
Bond lengths



Bond angles

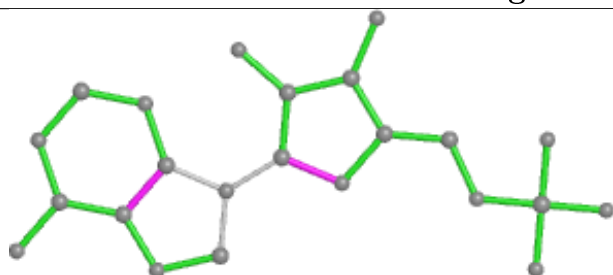


Torsions

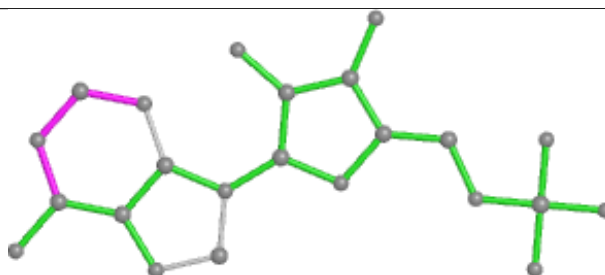


Rings

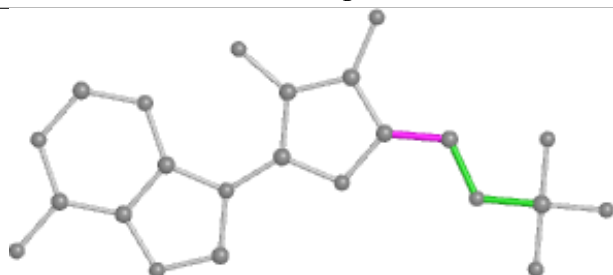
## Ligand AMP A 803



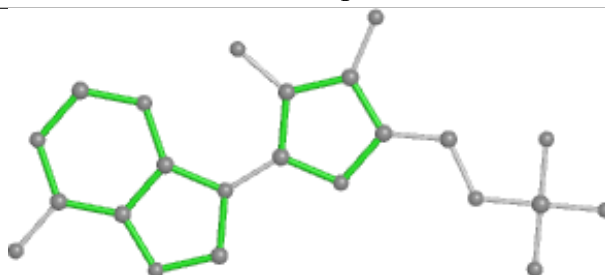
Bond lengths



Bond angles

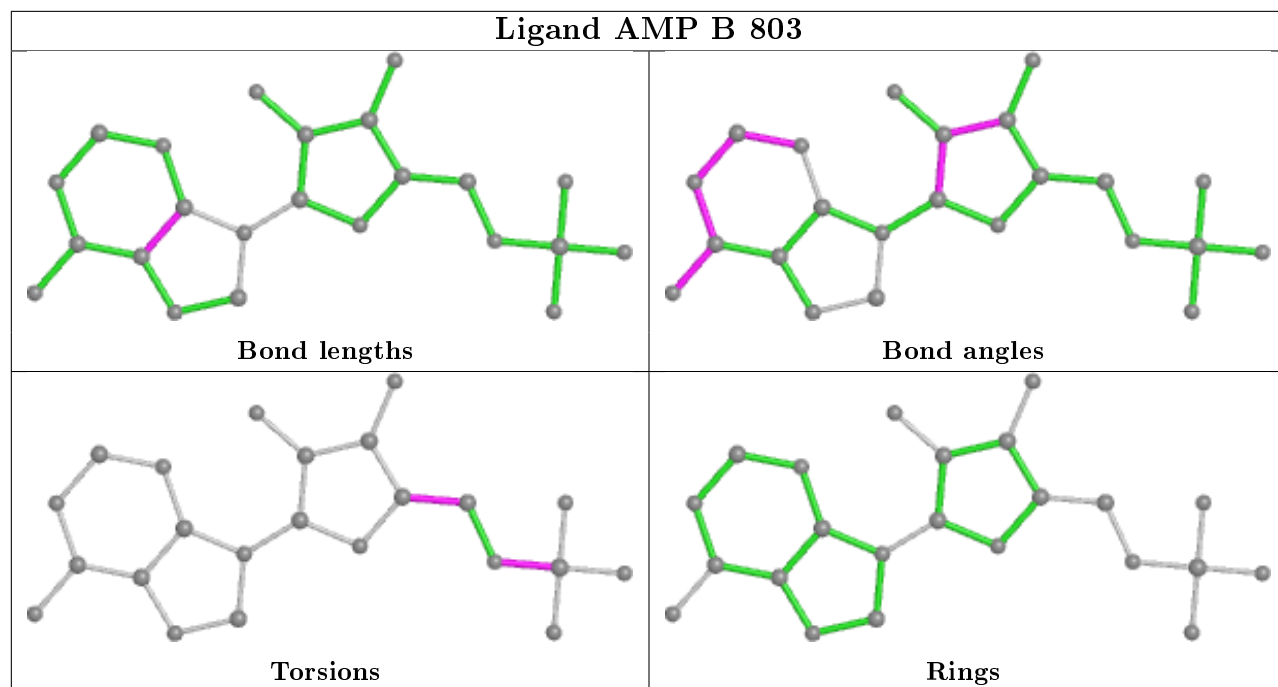


Torsions

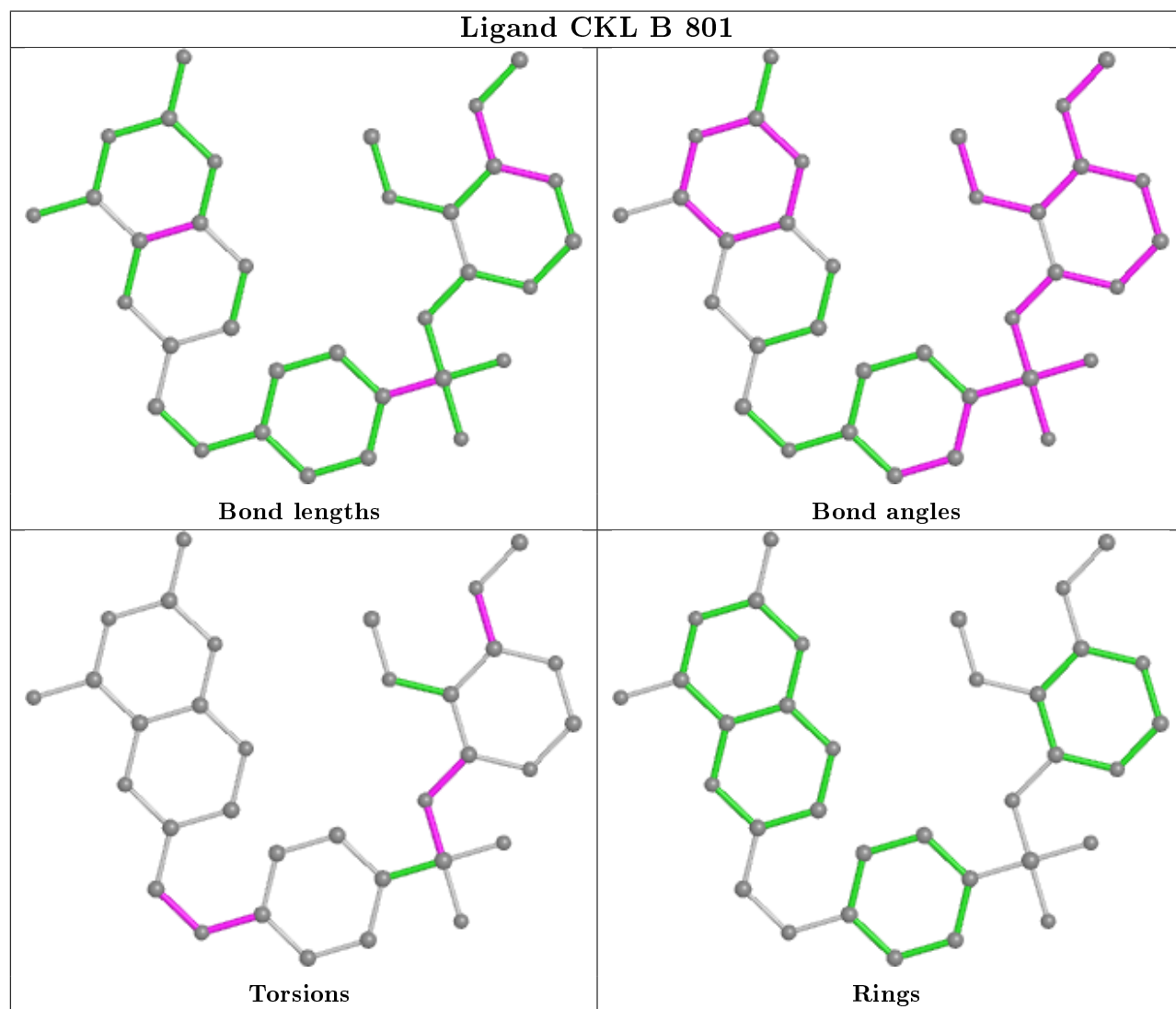


Rings

## Ligand AMP B 803



## Ligand CKL B 801



## 5.7 Other polymers [i](#)

There are no such residues in this entry.

## 5.8 Polymer linkage issues [i](#)

There are no chain breaks in this entry.

## 6 Fit of model and data [i](#)

### 6.1 Protein, DNA and RNA chains [i](#)

In the following table, the column labelled ‘#RSRZ> 2’ contains the number (and percentage) of RSRZ outliers, followed by percent RSRZ outliers for the chain as percentile scores relative to all X-ray entries and entries of similar resolution. The OWAB column contains the minimum, median, 95<sup>th</sup> percentile and maximum values of the occupancy-weighted average B-factor per residue. The column labelled ‘Q< 0.9’ lists the number of (and percentage) of residues with an average occupancy less than 0.9.

Mol	Chain	Analysed	<RSRZ>	#RSRZ>2	OWAB(Å <sup>2</sup> )	Q<0.9
1	A	550/728 (75%)	-0.12	26 (4%) 31 20	12, 36, 104, 120	0
1	B	565/728 (77%)	0.07	30 (5%) 26 16	11, 51, 110, 120	0
All	All	1115/1456 (76%)	-0.03	56 (5%) 28 18	11, 43, 109, 120	0

The worst 5 of 56 RSRZ outliers are listed below:

Mol	Chain	Res	Type	RSRZ
1	A	443	ASN	6.5
1	A	470	ILE	6.5
1	A	468	ASN	6.1
1	B	473	CYS	4.5
1	B	134	LEU	4.4

### 6.2 Non-standard residues in protein, DNA, RNA chains [i](#)

There are no non-standard protein/DNA/RNA residues in this entry.

### 6.3 Carbohydrates [i](#)

There are no monosaccharides in this entry.

### 6.4 Ligands [i](#)

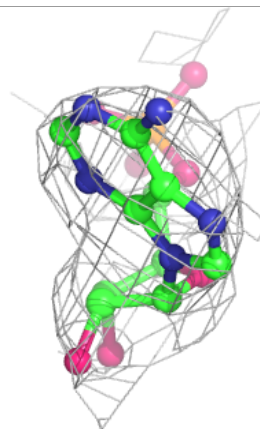
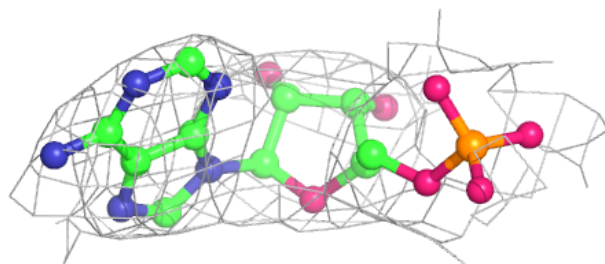
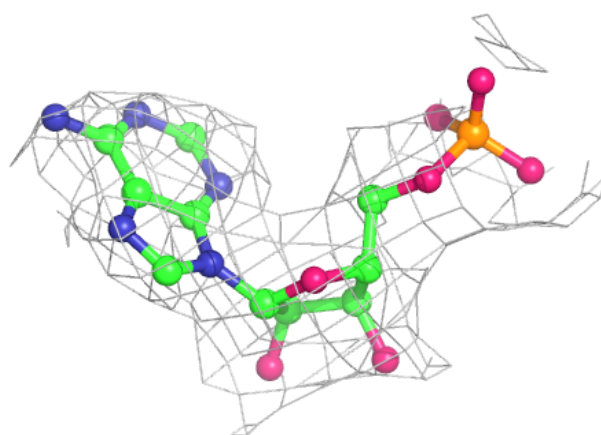
In the following table, the Atoms column lists the number of modelled atoms in the group and the number defined in the chemical component dictionary. The B-factors column lists the minimum, median, 95<sup>th</sup> percentile and maximum values of B factors of atoms in the group. The column labelled ‘Q< 0.9’ lists the number of atoms with occupancy less than 0.9.

Mol	Type	Chain	Res	Atoms	RSCC	RSR	B-factors( $\text{\AA}^2$ )	Q<0.9
5	MG	B	804	1/1	0.59	0.20	65,65,65,65	0
8	PEG	A	807	7/7	0.86	0.19	65,67,75,76	0
8	PEG	A	808	7/7	0.88	0.21	46,53,60,63	0
4	AMP	B	803	23/23	0.88	0.22	75,83,120,120	0
2	CKL	A	801	34/34	0.90	0.24	13,29,102,107	0
3	PO4	B	802	5/5	0.92	0.20	70,77,79,80	0
4	AMP	A	803	23/23	0.94	0.18	45,54,81,81	0
2	CKL	B	801	34/34	0.94	0.18	14,32,108,110	0
3	PO4	A	802	5/5	0.95	0.16	44,52,56,58	0
5	MG	A	804	1/1	0.96	0.26	28,28,28,28	0
7	ACT	B	806	4/4	0.96	0.14	14,14,14,14	0
7	ACT	A	806	4/4	0.96	0.26	31,31,33,36	0
6	CA	A	805	1/1	0.97	0.12	37,37,37,37	0
6	CA	B	805	1/1	0.99	0.06	63,63,63,63	0

The following is a graphical depiction of the model fit to experimental electron density of all instances of the Ligand of Interest. In addition, ligands with molecular weight > 250 and outliers as shown on the geometry validation Tables will also be included. Each fit is shown from different orientation to approximate a three-dimensional view.

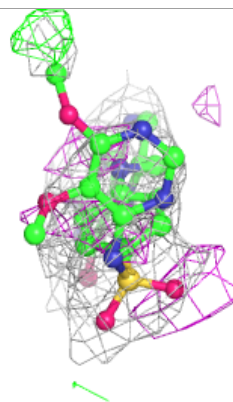
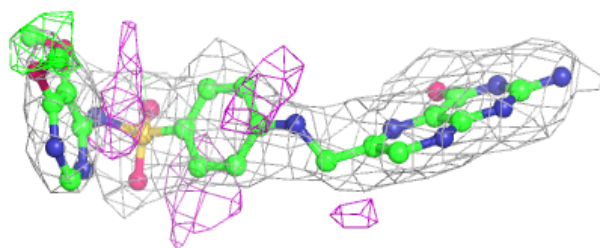
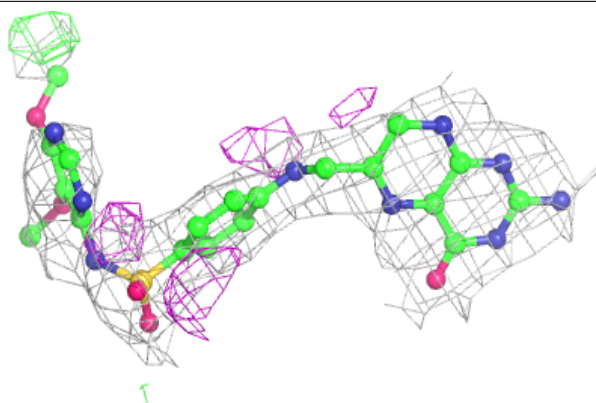
**Electron density around AMP B 803:**

2mF<sub>o</sub>-DF<sub>c</sub> (at 0.7 rmsd) in gray  
mF<sub>o</sub>-DF<sub>c</sub> (at 3 rmsd) in purple (negative)  
and green (positive)

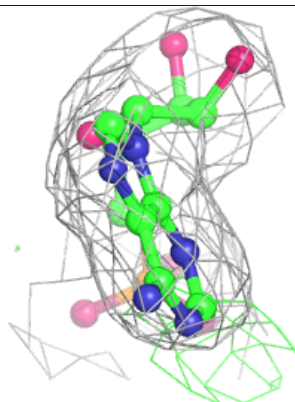
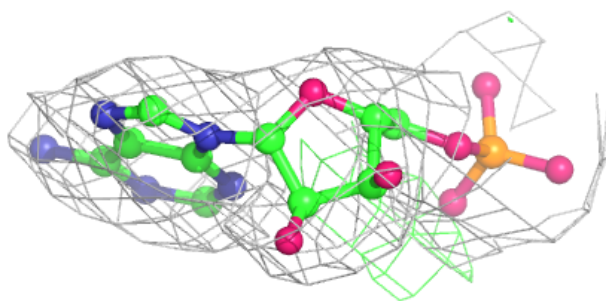
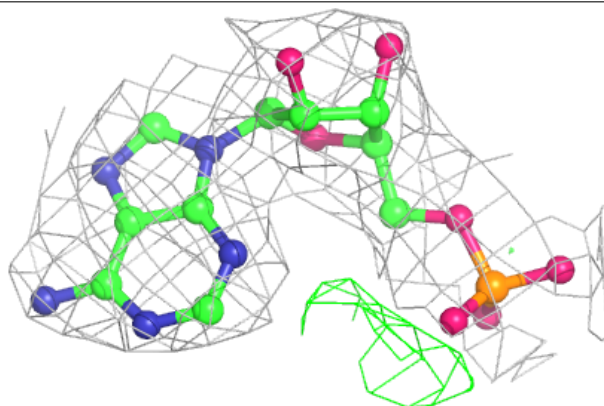


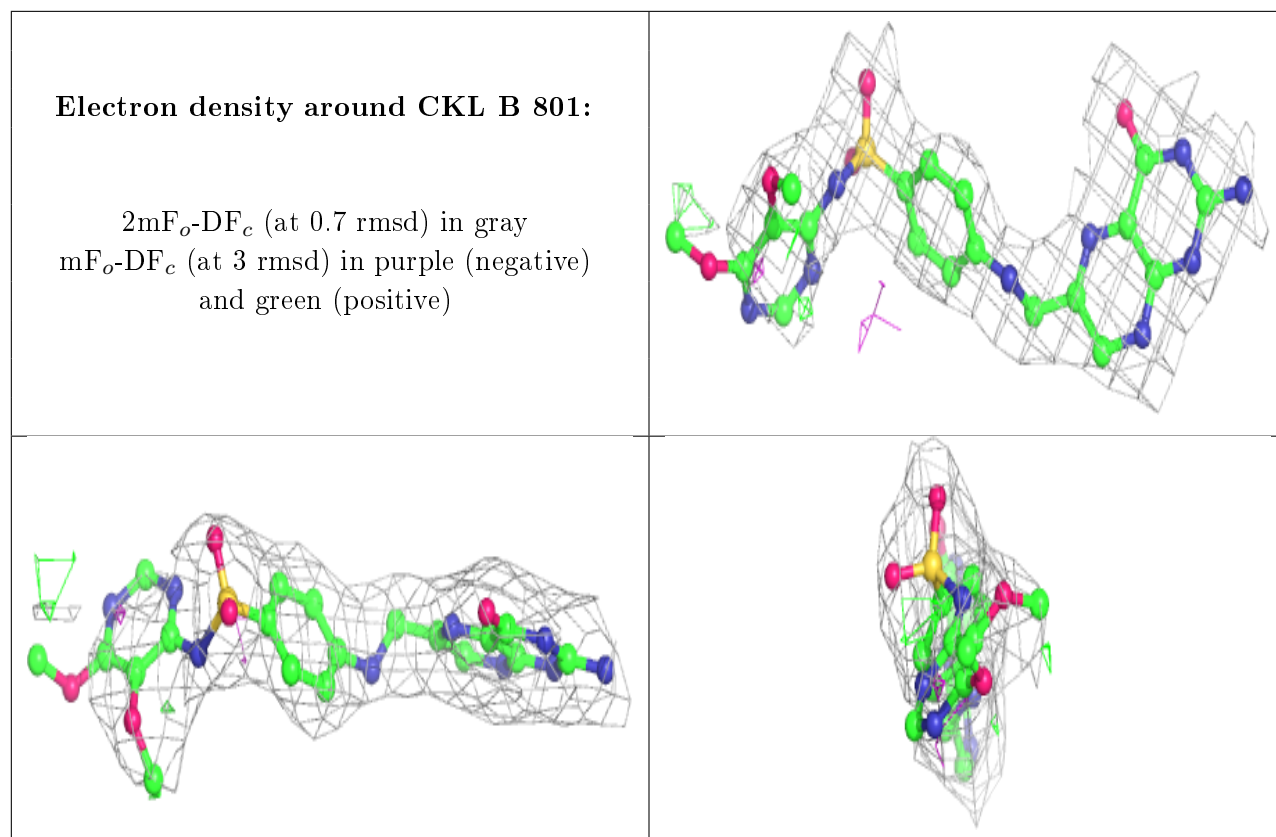
**Electron density around CKL A 801:**

$2mF_o-DF_c$  (at 0.7 rmsd) in gray  
 $mF_o-DF_c$  (at 3 rmsd) in purple (negative)  
and green (positive)

**Electron density around AMP A 803:**

$2mF_o-DF_c$  (at 0.7 rmsd) in gray  
 $mF_o-DF_c$  (at 3 rmsd) in purple (negative)  
and green (positive)





## 6.5 Other polymers [i](#)

There are no such residues in this entry.