



# Full wwPDB X-ray Structure Validation Report ⓘ

Oct 2, 2021 – 10:19 AM EDT

PDB ID : 3JX4  
Title : Structure of rat neuronal nitric oxide synthase D597N/M336V mutant heme domain in complex with N1-{(3'R,4'S)-4'-[(6"-amino-4"-methylpyridin-2"-yl)methyl]pyrrolidin-3'-yl}-N2-(3'-fluorophenethyl)ethane-1,2-diamine  
Authors : Delker, S.L.; Li, H.; Poulos, T.L.  
Deposited on : 2009-09-18  
Resolution : 2.26 Å(reported)

This is a Full wwPDB X-ray Structure Validation Report for a publicly released PDB entry.

We welcome your comments at [validation@mail.wwpdb.org](mailto:validation@mail.wwpdb.org)

A user guide is available at

<https://www.wwpdb.org/validation/2017/XrayValidationReportHelp>

with specific help available everywhere you see the ⓘ symbol.

---

The following versions of software and data (see [references ⓘ](#)) were used in the production of this report:

MolProbity : 4.02b-467  
Mogul : 1.8.5 (274361), CSD as541be (2020)  
Xtriage (Phenix) : 1.13  
EDS : 2.23.2  
buster-report : 1.1.7 (2018)  
Percentile statistics : 20191225.v01 (using entries in the PDB archive December 25th 2019)  
Refmac : 5.8.0158  
CCP4 : 7.0.044 (Gargrove)  
Ideal geometry (proteins) : Engh & Huber (2001)  
Ideal geometry (DNA, RNA) : Parkinson et al. (1996)  
Validation Pipeline (wwPDB-VP) : 2.23.2

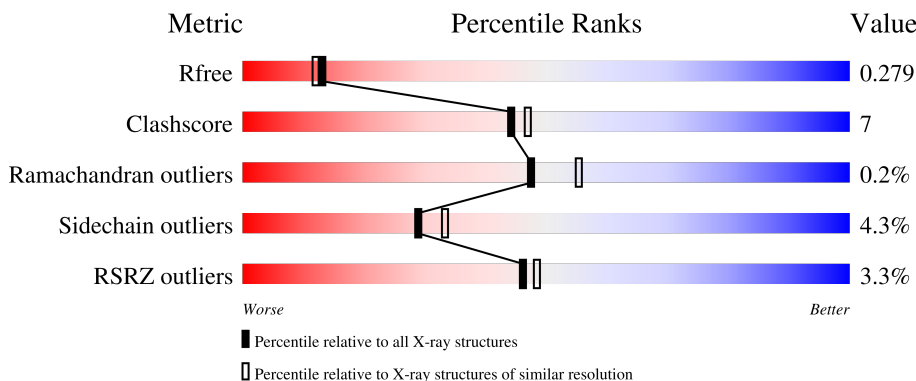
# 1 Overall quality at a glance

The following experimental techniques were used to determine the structure:

## *X-RAY DIFFRACTION*

The reported resolution of this entry is 2.26 Å.

Percentile scores (ranging between 0-100) for global validation metrics of the entry are shown in the following graphic. The table shows the number of entries on which the scores are based.



Metric	Whole archive (#Entries)	Similar resolution (#Entries, resolution range(Å))
$R_{free}$	130704	1377 (2.26-2.26)
Clashscore	141614	1487 (2.26-2.26)
Ramachandran outliers	138981	1449 (2.26-2.26)
Sidechain outliers	138945	1450 (2.26-2.26)
RSRZ outliers	127900	1356 (2.26-2.26)

The table below summarises the geometric issues observed across the polymeric chains and their fit to the electron density. The red, orange, yellow and green segments of the lower bar indicate the fraction of residues that contain outliers for  $\geq 3$ , 2, 1 and 0 types of geometric quality criteria respectively. A grey segment represents the fraction of residues that are not modelled. The numeric value for each fraction is indicated below the corresponding segment, with a dot representing fractions  $\leq 5\%$ . The upper red bar (where present) indicates the fraction of residues that have poor fit to the electron density. The numeric value is given above the bar.

Mol	Chain	Length	Quality of chain
1	A	422	<div> <div>3%</div> <div>84%</div> <div>12%</div> <div>..</div> </div>
1	B	422	<div> <div>3%</div> <div>79%</div> <div>16%</div> <div>..</div> </div>

## 2 Entry composition [i](#)

There are 7 unique types of molecules in this entry. The entry contains 6961 atoms, of which 0 are hydrogens and 0 are deuteriums.

In the tables below, the ZeroOcc column contains the number of atoms modelled with zero occupancy, the AltConf column contains the number of residues with at least one atom in alternate conformation and the Trace column contains the number of residues modelled with at most 2 atoms.

- Molecule 1 is a protein called Nitric oxide synthase, brain.

Mol	Chain	Residues	Atoms					ZeroOcc	AltConf	Trace
1	A	407	Total	C	N	O	S	0	0	0
			3312	2121	567	604	20			
1	B	411	Total	C	N	O	S	0	0	0
			3344	2140	575	609	20			

There are 4 discrepancies between the modelled and reference sequences:

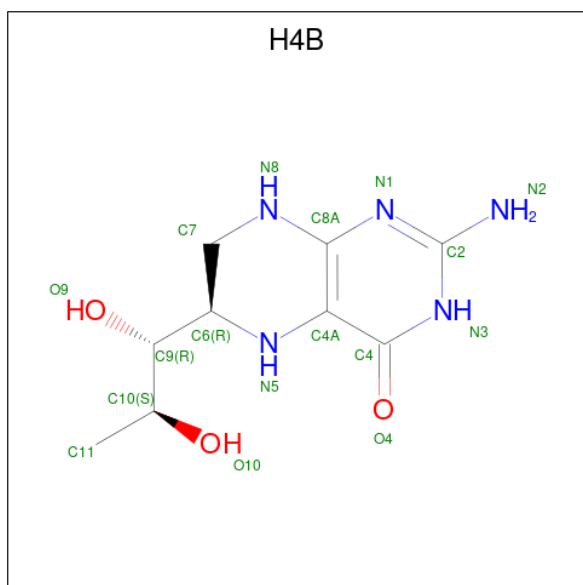
Chain	Residue	Modelled	Actual	Comment	Reference
A	336	VAL	MET	engineered mutation	UNP P29476
A	597	ASN	ASP	engineered mutation	UNP P29476
B	336	VAL	MET	engineered mutation	UNP P29476
B	597	ASN	ASP	engineered mutation	UNP P29476

- Molecule 2 is PROTOPORPHYRIN IX CONTAINING FE (three-letter code: HEM) (formula:  $C_{34}H_{32}FeN_4O_4$ ).



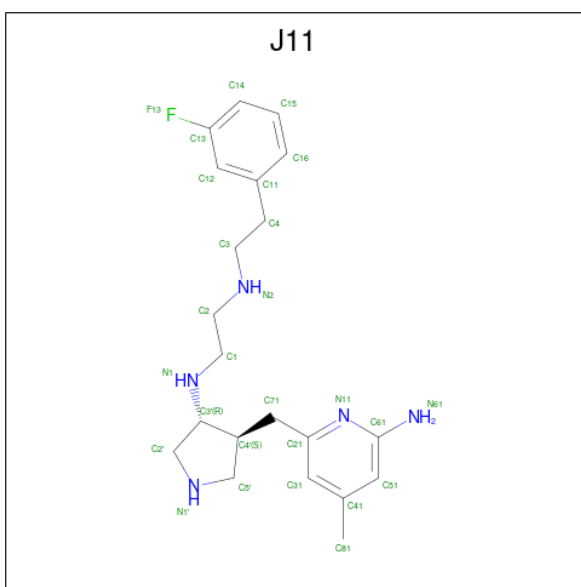
Mol	Chain	Residues	Atoms					ZeroOcc	AltConf
2	A	1	Total 43	C 34	Fe 1	N 4	O 4	0	0
2	B	1	Total 43	C 34	Fe 1	N 4	O 4	0	0

- Molecule 3 is 5,6,7,8-TETRAHYDROBIOPTERIN (three-letter code: H4B) (formula:  $C_9H_{15}N_5O_3$ ).



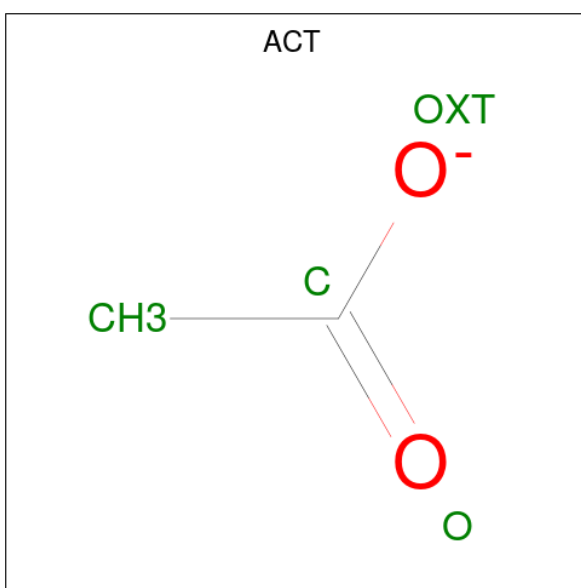
Mol	Chain	Residues	Atoms				ZeroOcc	AltConf
3	A	1	Total	C	N	O	0	0
			17	9	5	3		
3	B	1	Total	C	N	O	0	0
			17	9	5	3		

- Molecule 4 is N-{(3R,4S)-4-[(6-amino-4-methylpyridin-2-yl)methyl]pyrrolidin-3-yl}-N'-[2-(3-fluorophenyl)ethyl]ethane-1,2-diamine (three-letter code: J11) (formula:  $C_{21}H_{30}FN_5$ ).



Mol	Chain	Residues	Atoms				ZeroOcc	AltConf
4	A	1	Total	C	F	N	0	0
			27	21	1	5		
4	B	1	Total	C	F	N	0	0
			27	21	1	5		

- Molecule 5 is ACETATE ION (three-letter code: ACT) (formula:  $C_2H_3O_2$ ).



Mol	Chain	Residues	Atoms			ZeroOcc	AltConf
5	A	1	Total	C	O	0	0
			4	2	2		
5	B	1	Total	C	O	0	0
			4	2	2		

- Molecule 6 is ZINC ION (three-letter code: ZN) (formula: Zn).

Mol	Chain	Residues	Atoms		ZeroOcc	AltConf
6	A	1	Total 1	Zn 1	0	0

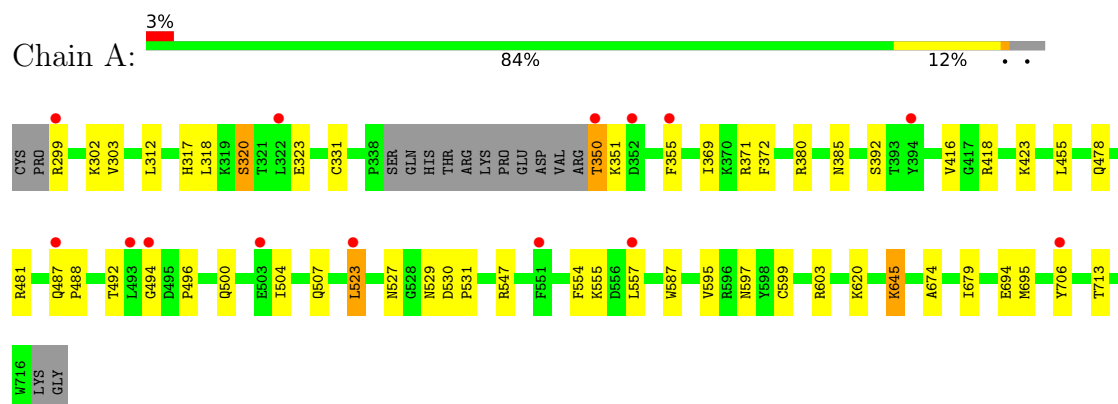
- Molecule 7 is water.

Mol	Chain	Residues	Atoms		ZeroOcc	AltConf
7	A	52	Total 52	O 52	0	0
7	B	70	Total 70	O 70	0	0

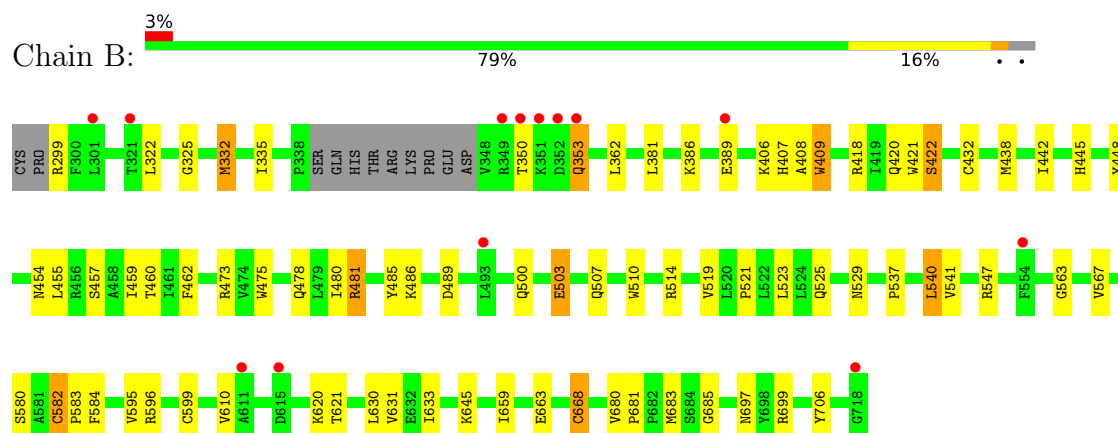
### 3 Residue-property plots [i](#)

These plots are drawn for all protein, RNA, DNA and oligosaccharide chains in the entry. The first graphic for a chain summarises the proportions of the various outlier classes displayed in the second graphic. The second graphic shows the sequence view annotated by issues in geometry and electron density. Residues are color-coded according to the number of geometric quality criteria for which they contain at least one outlier: green = 0, yellow = 1, orange = 2 and red = 3 or more. A red dot above a residue indicates a poor fit to the electron density ( $RSRZ > 2$ ). Stretches of 2 or more consecutive residues without any outlier are shown as a green connector. Residues present in the sample, but not in the model, are shown in grey.

- Molecule 1: Nitric oxide synthase, brain



- Molecule 1: Nitric oxide synthase, brain



## 4 Data and refinement statistics

Property	Value	Source
Space group	P 21 21 21	Depositor
Cell constants a, b, c, $\alpha$ , $\beta$ , $\gamma$	51.60Å 110.97Å 164.87Å 90.00° 90.00° 90.00°	Depositor
Resolution (Å)	49.89 – 2.26 49.25 – 2.26	Depositor EDS
% Data completeness (in resolution range)	99.0 (49.89-2.26) 99.1 (49.25-2.26)	Depositor EDS
$R_{merge}$	0.07	Depositor
$R_{sym}$	0.07	Depositor
$\langle I/\sigma(I) \rangle$ <sup>1</sup>	2.62 (at 2.27Å)	Xtriage
Refinement program	REFMAC 5.5.0089, CNS	Depositor
R, $R_{free}$	0.211 , 0.266 0.228 , 0.279	Depositor DCC
$R_{free}$ test set	2236 reflections (5.01%)	wwPDB-VP
Wilson B-factor (Å <sup>2</sup> )	41.5	Xtriage
Anisotropy	0.915	Xtriage
Bulk solvent $k_{sol}$ (e/Å <sup>3</sup> ), $B_{sol}$ (Å <sup>2</sup> )	0.34 , 48.8	EDS
L-test for twinning <sup>2</sup>	$\langle  L  \rangle = 0.50$ , $\langle L^2 \rangle = 0.34$	Xtriage
Estimated twinning fraction	No twinning to report.	Xtriage
$F_o, F_c$ correlation	0.95	EDS
Total number of atoms	6961	wwPDB-VP
Average B, all atoms (Å <sup>2</sup> )	64.0	wwPDB-VP

Xtriage's analysis on translational NCS is as follows: *The largest off-origin peak in the Patterson function is 4.65% of the height of the origin peak. No significant pseudotranslation is detected.*

<sup>1</sup>Intensities estimated from amplitudes.

<sup>2</sup>Theoretical values of  $\langle |L| \rangle$ ,  $\langle L^2 \rangle$  for acentric reflections are 0.5, 0.333 respectively for untwinned datasets, and 0.375, 0.2 for perfectly twinned datasets.



## 5 Model quality [i](#)

### 5.1 Standard geometry [i](#)

Bond lengths and bond angles in the following residue types are not validated in this section: HEM, ZN, ACT, H4B, J11

The Z score for a bond length (or angle) is the number of standard deviations the observed value is removed from the expected value. A bond length (or angle) with  $|Z| > 5$  is considered an outlier worth inspection. RMSZ is the root-mean-square of all Z scores of the bond lengths (or angles).

Mol	Chain	Bond lengths		Bond angles	
		RMSZ	$\# Z  > 5$	RMSZ	$\# Z  > 5$
1	A	0.72	2/3405 (0.1%)	0.72	1/4621 (0.0%)
1	B	0.90	3/3437 (0.1%)	0.80	2/4661 (0.0%)
All	All	0.82	5/6842 (0.1%)	0.76	3/9282 (0.0%)

All (5) bond length outliers are listed below:

Mol	Chain	Res	Type	Atoms	Z	Observed(Å)	Ideal(Å)
1	B	422	SER	CA-CB	9.39	1.67	1.52
1	B	668	CYS	CB-SG	7.14	1.94	1.82
1	A	372	PHE	CG-CD1	5.62	1.47	1.38
1	B	409	TRP	CZ3-CH2	5.59	1.49	1.40
1	A	372	PHE	CE2-CZ	5.16	1.47	1.37

All (3) bond angle outliers are listed below:

Mol	Chain	Res	Type	Atoms	Z	Observed(°)	Ideal(°)
1	B	489	ASP	CB-CG-OD2	5.73	123.46	118.30
1	B	489	ASP	CB-CG-OD1	-5.23	113.59	118.30
1	A	418	ARG	NE-CZ-NH1	-5.12	117.74	120.30

There are no chirality outliers.

There are no planarity outliers.

### 5.2 Too-close contacts [i](#)

In the following table, the Non-H and H(model) columns list the number of non-hydrogen atoms and hydrogen atoms in the chain respectively. The H(added) column lists the number of hydrogen atoms added and optimized by MolProbity. The Clashes column lists the number of clashes within the asymmetric unit, whereas Symm-Clashes lists symmetry-related clashes.

Mol	Chain	Non-H	H(model)	H(added)	Clashes	Symm-Clashes
1	A	3312	0	3223	31	0
1	B	3344	0	3261	52	0
2	A	43	0	30	5	0
2	B	43	0	30	12	0
3	A	17	0	15	0	0
3	B	17	0	15	1	0
4	A	27	0	30	0	0
4	B	27	0	30	4	0
5	A	4	0	3	0	0
5	B	4	0	3	0	0
6	A	1	0	0	0	0
7	A	52	0	0	0	0
7	B	70	0	0	2	0
All	All	6961	0	6640	89	0

The all-atom clashscore is defined as the number of clashes found per 1000 atoms (including hydrogen atoms). The all-atom clashscore for this structure is 7.

All (89) close contacts within the same asymmetric unit are listed below, sorted by their clash magnitude.

Atom-1	Atom-2	Interatomic distance (Å)	Clash overlap (Å)
1:B:537:PRO:HG2	1:B:540:LEU:HD22	1.59	0.83
2:B:750:HEM:HHC	2:B:750:HEM:HBB2	1.61	0.81
1:B:420:GLN:HA	7:B:1017:HOH:O	1.79	0.80
2:A:750:HEM:HBB2	2:A:750:HEM:HHC	1.69	0.75
1:B:500:GLN:HA	1:B:503:GLU:OE2	1.88	0.74
1:B:420:GLN:CD	7:B:1017:HOH:O	2.28	0.72
1:A:351:LYS:HE2	1:A:392:SER:HB3	1.72	0.71
2:A:750:HEM:HMC2	2:A:750:HEM:HBC2	1.72	0.71
1:A:317:HIS:O	1:A:320:SER:HB3	1.92	0.70
1:B:584:PHE:CD1	2:B:750:HEM:CAC	2.77	0.68
1:B:322:LEU:HD13	1:B:699:ARG:HH21	1.58	0.67
1:B:485:TYR:CE1	1:B:514:ARG:HA	2.31	0.66
1:A:478:GLN:HB2	1:A:481:ARG:HG3	1.80	0.64
1:A:523:LEU:HD22	1:A:531:PRO:HB2	1.79	0.62
1:B:473:ARG:HD2	1:B:580:SER:O	1.99	0.62
1:A:694:GLU:HB3	1:B:335:ILE:HD13	1.83	0.61
1:B:325:GLY:O	1:B:332:MET:HG3	2.00	0.61
1:A:492:THR:HG21	1:A:496:PRO:HG3	1.81	0.61
1:B:659:ILE:O	1:B:663:GLU:HG3	2.01	0.61
1:B:406:LYS:HB3	1:B:421:TRP:CZ3	2.39	0.57
1:A:299:ARG:O	1:A:317:HIS:CE1	2.58	0.57

*Continued on next page...*

*Continued from previous page...*

Atom-1	Atom-2	Interatomic distance (Å)	Clash overlap (Å)
1:B:473:ARG:HD3	1:B:580:SER:HB2	1.87	0.56
1:B:406:LYS:HB3	1:B:421:TRP:HZ3	1.72	0.55
1:A:500:GLN:O	1:A:504:ILE:HG13	2.07	0.55
1:B:706:TYR:CZ	4:B:800:J11:H12	2.41	0.55
2:B:750:HEM:O2D	4:B:800:J11:H4	2.07	0.55
1:B:584:PHE:CD1	2:B:750:HEM:HAC	2.41	0.55
1:A:355:PHE:CE1	1:A:385:ASN:HB2	2.42	0.54
1:B:567:VAL:O	1:B:583:PRO:HA	2.09	0.53
1:A:371:ARG:HG2	1:A:371:ARG:HH21	1.73	0.53
1:B:595:VAL:HG13	1:B:630:LEU:HD11	1.90	0.53
1:B:362:LEU:HD12	1:B:381:LEU:HD23	1.90	0.52
1:B:525:GLN:HG3	1:B:529:ASN:O	2.09	0.52
2:B:750:HEM:HBA1	4:B:800:J11:H71A	1.90	0.52
1:B:706:TYR:OH	2:B:750:HEM:O1D	2.27	0.52
1:B:409:TRP:CE3	1:B:421:TRP:HA	2.45	0.52
1:A:706:TYR:OH	2:A:750:HEM:O1D	2.28	0.51
1:B:510:TRP:CD1	1:B:521:PRO:HG3	2.46	0.51
1:B:299:ARG:HB3	1:B:299:ARG:NH1	2.26	0.50
1:B:409:TRP:CZ2	2:B:750:HEM:C1C	2.99	0.50
1:A:487:GLN:HB3	1:A:488:PRO:HD2	1.95	0.49
1:A:369:ILE:HG13	1:A:371:ARG:HG3	1.94	0.49
1:B:299:ARG:HB3	1:B:299:ARG:CZ	2.43	0.49
1:A:299:ARG:HE	1:A:318:LEU:HD13	1.78	0.49
1:B:582:CYS:O	1:B:583:PRO:C	2.51	0.49
1:A:554:PHE:O	1:A:557:LEU:HD12	2.14	0.48
1:B:442:ILE:O	1:B:445:HIS:HB3	2.13	0.47
1:B:519:VAL:HG21	1:B:541:VAL:HG11	1.96	0.47
1:A:455:LEU:HD12	1:A:587:TRP:HB3	1.96	0.47
1:B:353:GLN:HE21	1:B:353:GLN:H	1.62	0.47
1:B:409:TRP:CZ2	2:B:750:HEM:CHC	2.98	0.47
1:B:475:TRP:HB2	1:B:523:LEU:HB3	1.97	0.46
1:B:459:ILE:HG13	1:B:583:PRO:O	2.16	0.46
1:A:331:CYS:HB3	1:B:697:ASN:HB3	1.98	0.46
1:A:595:VAL:O	1:A:599:CYS:HB2	2.16	0.45
1:A:494:GLY:O	1:A:496:PRO:HD3	2.17	0.45
1:B:448:TYR:CD2	1:B:448:TYR:C	2.88	0.45
1:A:299:ARG:HG3	1:A:318:LEU:HD11	1.97	0.45
1:B:706:TYR:OH	2:B:750:HEM:CGD	2.65	0.45
1:B:418:ARG:O	1:B:421:TRP:HB3	2.17	0.45
1:A:299:ARG:O	1:A:317:HIS:HE1	1.99	0.44
1:B:322:LEU:HD13	1:B:699:ARG:NH2	2.29	0.44

*Continued on next page...*

*Continued from previous page...*

Atom-1	Atom-2	Interatomic distance (Å)	Clash overlap (Å)
1:B:631:VAL:HG22	1:B:683:MET:HE1	1.99	0.44
1:B:455:LEU:HD21	1:B:563:GLY:O	2.18	0.44
1:B:460:THR:HG22	1:B:462:PHE:CE2	2.53	0.44
1:A:350:THR:HG22	1:A:351:LYS:H	1.82	0.43
1:B:595:VAL:O	1:B:599:CYS:HB2	2.18	0.43
1:A:706:TYR:OH	2:A:750:HEM:CGD	2.67	0.43
2:B:750:HEM:O2D	4:B:800:J11:H2A	2.19	0.43
1:A:416:VAL:HG23	1:A:679:ILE:HG23	2.00	0.43
1:A:529:ASN:O	1:A:530:ASP:C	2.56	0.43
1:B:610:VAL:HG21	1:B:633:ILE:HD11	2.02	0.42
1:B:459:ILE:HG12	1:B:460:THR:N	2.34	0.42
1:B:386:LYS:O	1:B:389:GLU:HG2	2.19	0.42
1:B:409:TRP:HZ2	2:B:750:HEM:CHC	2.32	0.42
2:B:750:HEM:HBD1	2:B:750:HEM:HHA	2.01	0.42
1:A:645:LYS:HE3	1:A:645:LYS:HB2	1.85	0.42
1:B:478:GLN:HB2	1:B:481:ARG:HG3	2.02	0.41
1:B:407:HIS:O	1:B:408:ALA:C	2.59	0.41
1:B:432:CYS:SG	1:B:438:MET:HG3	2.60	0.41
1:B:459:ILE:HD11	1:B:582:CYS:HB2	2.01	0.41
1:B:680:VAL:HA	1:B:681:PRO:HD3	1.96	0.41
1:A:302:LYS:HA	1:A:312:LEU:O	2.20	0.41
1:A:371:ARG:HG2	1:A:371:ARG:NH2	2.35	0.41
1:A:674:ALA:HB3	1:A:695:MET:HB3	2.03	0.41
1:B:596:ARG:HH12	3:B:760:H4B:C4	2.33	0.41
1:A:597:ASN:OD1	1:A:603:ARG:NH1	2.54	0.40
2:A:750:HEM:HMC2	2:A:750:HEM:CBC	2.46	0.40
1:A:455:LEU:HD12	1:A:587:TRP:CB	2.51	0.40

There are no symmetry-related clashes.

## 5.3 Torsion angles [i](#)

### 5.3.1 Protein backbone [i](#)

In the following table, the Percentiles column shows the percent Ramachandran outliers of the chain as a percentile score with respect to all X-ray entries followed by that with respect to entries of similar resolution.

The Analysed column shows the number of residues for which the backbone conformation was analysed, and the total number of residues.

Mol	Chain	Analysed	Favoured	Allowed	Outliers	Percentiles	
1	A	403/422 (96%)	386 (96%)	17 (4%)	0	100	100
1	B	407/422 (96%)	391 (96%)	14 (3%)	2 (0%)	29	29
All	All	810/844 (96%)	777 (96%)	31 (4%)	2 (0%)	47	55

All (2) Ramachandran outliers are listed below:

Mol	Chain	Res	Type
1	B	685	GLY
1	B	582	CYS

### 5.3.2 Protein sidechains ⓘ

In the following table, the Percentiles column shows the percent sidechain outliers of the chain as a percentile score with respect to all X-ray entries followed by that with respect to entries of similar resolution.

The Analysed column shows the number of residues for which the sidechain conformation was analysed, and the total number of residues.

Mol	Chain	Analysed	Rotameric	Outliers	Percentiles	
1	A	363/377 (96%)	349 (96%)	14 (4%)	32	38
1	B	366/377 (97%)	349 (95%)	17 (5%)	27	30
All	All	729/754 (97%)	698 (96%)	31 (4%)	29	33

All (31) residues with a non-rotameric sidechain are listed below:

Mol	Chain	Res	Type
1	A	303	VAL
1	A	320	SER
1	A	323	GLU
1	A	350	THR
1	A	380	ARG
1	A	423	LYS
1	A	507	GLN
1	A	523	LEU
1	A	527	ASN
1	A	547	ARG
1	A	555	LYS
1	A	620	LYS
1	A	645	LYS
1	A	713	THR

*Continued on next page...*

*Continued from previous page...*

Mol	Chain	Res	Type
1	B	332	MET
1	B	350	THR
1	B	353	GLN
1	B	422	SER
1	B	454	ASN
1	B	457	SER
1	B	480	ILE
1	B	481	ARG
1	B	486	LYS
1	B	503	GLU
1	B	507	GLN
1	B	540	LEU
1	B	547	ARG
1	B	620	LYS
1	B	621	THR
1	B	645	LYS
1	B	668	CYS

Sometimes sidechains can be flipped to improve hydrogen bonding and reduce clashes. All (13) such sidechains are listed below:

Mol	Chain	Res	Type
1	A	317	HIS
1	A	454	ASN
1	A	529	ASN
1	A	642	GLN
1	A	697	ASN
1	B	353	GLN
1	B	364	GLN
1	B	454	ASN
1	B	507	GLN
1	B	605	ASN
1	B	642	GLN
1	B	661	HIS
1	B	697	ASN

### 5.3.3 RNA ⓘ

There are no RNA molecules in this entry.

## 5.4 Non-standard residues in protein, DNA, RNA chains [i](#)

There are no non-standard protein/DNA/RNA residues in this entry.

## 5.5 Carbohydrates [i](#)

There are no monosaccharides in this entry.

## 5.6 Ligand geometry [i](#)

Of 9 ligands modelled in this entry, 1 is monoatomic - leaving 8 for Mogul analysis.

In the following table, the Counts columns list the number of bonds (or angles) for which Mogul statistics could be retrieved, the number of bonds (or angles) that are observed in the model and the number of bonds (or angles) that are defined in the Chemical Component Dictionary. The Link column lists molecule types, if any, to which the group is linked. The Z score for a bond length (or angle) is the number of standard deviations the observed value is removed from the expected value. A bond length (or angle) with  $|Z| > 2$  is considered an outlier worth inspection. RMSZ is the root-mean-square of all Z scores of the bond lengths (or angles).

Mol	Type	Chain	Res	Link	Bond lengths			Bond angles		
					Counts	RMSZ	# $ Z  > 2$	Counts	RMSZ	# $ Z  > 2$
4	J11	A	800	-	27,29,29	0.75	0	30,38,38	1.74	7 (23%)
5	ACT	B	860	-	1,3,3	1.23	0	0,3,3	-	-
2	HEM	B	750	1	27,50,50	2.16	5 (18%)	17,82,82	1.46	2 (11%)
4	J11	B	800	-	27,29,29	0.75	0	30,38,38	1.90	7 (23%)
5	ACT	A	860	-	1,3,3	1.32	0	0,3,3	-	-
2	HEM	A	750	1	27,50,50	2.12	8 (29%)	17,82,82	1.76	4 (23%)
3	H4B	A	760	-	16,18,18	0.99	0	11,26,26	3.02	6 (54%)
3	H4B	B	760	-	16,18,18	1.04	1 (6%)	11,26,26	2.70	7 (63%)

In the following table, the Chirals column lists the number of chiral outliers, the number of chiral centers analysed, the number of these observed in the model and the number defined in the Chemical Component Dictionary. Similar counts are reported in the Torsion and Rings columns. '-' means no outliers of that kind were identified.

Mol	Type	Chain	Res	Link	Chirals	Torsions	Rings
4	J11	A	800	-	-	2/13/23/23	0/3/3/3
2	HEM	B	750	1	-	1/6/54/54	-
4	J11	B	800	-	-	6/13/23/23	0/3/3/3
2	HEM	A	750	1	-	1/6/54/54	-
3	H4B	A	760	-	-	0/8/17/17	0/2/2/2

*Continued on next page...*

*Continued from previous page...*

Mol	Type	Chain	Res	Link	Chirals	Torsions	Rings
3	H4B	B	760	-	-	2/8/17/17	0/2/2/2

All (14) bond length outliers are listed below:

Mol	Chain	Res	Type	Atoms	Z	Observed(Å)	Ideal(Å)
2	B	750	HEM	C3D-C2D	5.29	1.53	1.37
2	A	750	HEM	C3D-C2D	4.61	1.51	1.37
2	B	750	HEM	C3C-C2C	-4.44	1.34	1.40
2	A	750	HEM	C3B-C2B	-4.30	1.34	1.40
2	B	750	HEM	C3B-C2B	-4.17	1.34	1.40
2	A	750	HEM	C3B-CAB	4.05	1.56	1.47
2	B	750	HEM	C3C-CAC	3.93	1.55	1.47
2	A	750	HEM	C3C-C2C	-3.89	1.35	1.40
2	B	750	HEM	C3B-CAB	3.49	1.55	1.47
2	A	750	HEM	C3C-CAC	3.19	1.54	1.47
2	A	750	HEM	CAA-C2A	2.92	1.56	1.52
3	B	760	H4B	C7-N8	2.47	1.48	1.44
2	A	750	HEM	CMA-C3A	2.15	1.56	1.51
2	A	750	HEM	CMC-C2C	2.01	1.56	1.51

All (33) bond angle outliers are listed below:

Mol	Chain	Res	Type	Atoms	Z	Observed(°)	Ideal(°)
4	B	800	J11	C1-N1-C3'	5.90	122.55	114.20
3	A	760	H4B	C4-C4A-N5	5.41	123.66	119.12
3	B	760	H4B	C4-C4A-C8A	5.27	119.25	114.57
3	A	760	H4B	C4-C4A-C8A	5.06	119.06	114.57
4	B	800	J11	C61-N11-C21	4.37	121.41	118.10
2	A	750	HEM	CBD-CAD-C3D	-4.31	104.53	112.48
4	A	800	J11	C61-N11-C21	3.97	121.11	118.10
2	A	750	HEM	C1D-C2D-C3D	-3.78	104.36	107.00
4	A	800	J11	C5'-N1'-C2'	3.56	113.82	105.42
3	A	760	H4B	C4-N3-C2	3.52	121.53	115.93
3	B	760	H4B	C4-N3-C2	3.51	121.51	115.93
4	B	800	J11	C31-C21-N11	-3.50	119.18	122.90
3	A	760	H4B	N3-C2-N1	-3.48	119.97	125.42
3	B	760	H4B	N3-C2-N1	-3.08	120.59	125.42
4	A	800	J11	C1-N1-C3'	3.07	118.54	114.20
4	A	800	J11	C41-C31-C21	-3.04	118.33	120.32
2	B	750	HEM	CBD-CAD-C3D	-2.90	107.13	112.48
3	A	760	H4B	N2-C2-N3	2.87	121.71	117.25
4	A	800	J11	C14-C13-C12	-2.78	119.67	123.29

*Continued on next page...*



*Continued from previous page...*

Mol	Chain	Res	Type	Atoms	Z	Observed(°)	Ideal(°)
3	A	760	H4B	C2-N1-C8A	2.76	120.73	114.54
3	B	760	H4B	N2-C2-N3	2.72	121.49	117.25
4	B	800	J11	C14-C13-C12	-2.64	119.87	123.29
2	A	750	HEM	CAD-CBD-CGD	-2.52	108.44	112.67
4	B	800	J11	C5'-N1'-C2'	2.51	111.35	105.42
4	A	800	J11	C31-C21-N11	-2.44	120.32	122.90
3	B	760	H4B	C2-N1-C8A	2.41	119.93	114.54
2	B	750	HEM	CMA-C3A-C4A	-2.34	124.87	128.46
3	B	760	H4B	C4-C4A-N5	2.32	121.06	119.12
4	B	800	J11	N61-C61-N11	2.24	120.04	116.49
2	A	750	HEM	C4C-C3C-C2C	2.23	108.46	106.90
4	B	800	J11	C2-C1-N1	2.20	114.64	111.06
3	B	760	H4B	O9-C9-C6	2.17	114.18	108.98
4	A	800	J11	C3-C4-C11	-2.14	107.92	112.87

There are no chirality outliers.

All (12) torsion outliers are listed below:

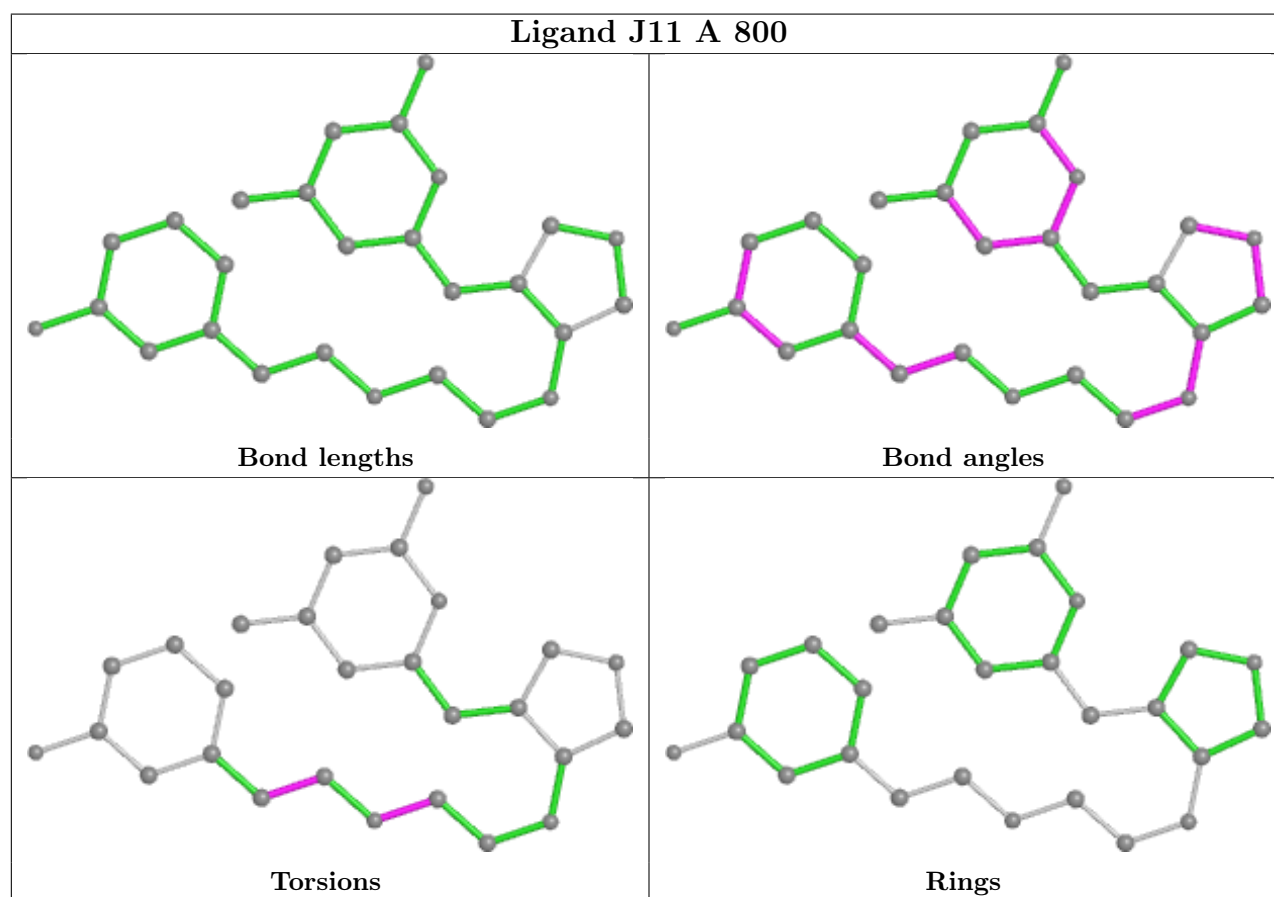
Mol	Chain	Res	Type	Atoms
2	A	750	HEM	C2A-CAA-CBA-CGA
4	B	800	J11	C4'-C3'-N1-C1
4	B	800	J11	N2-C3-C4-C11
4	A	800	J11	N2-C3-C4-C11
2	B	750	HEM	C2A-CAA-CBA-CGA
4	B	800	J11	C2-C1-N1-C3'
3	B	760	H4B	C7-C6-C9-O9
4	B	800	J11	C16-C11-C4-C3
4	B	800	J11	C12-C11-C4-C3
4	A	800	J11	C1-C2-N2-C3
4	B	800	J11	C4-C3-N2-C2
3	B	760	H4B	N5-C6-C9-O9

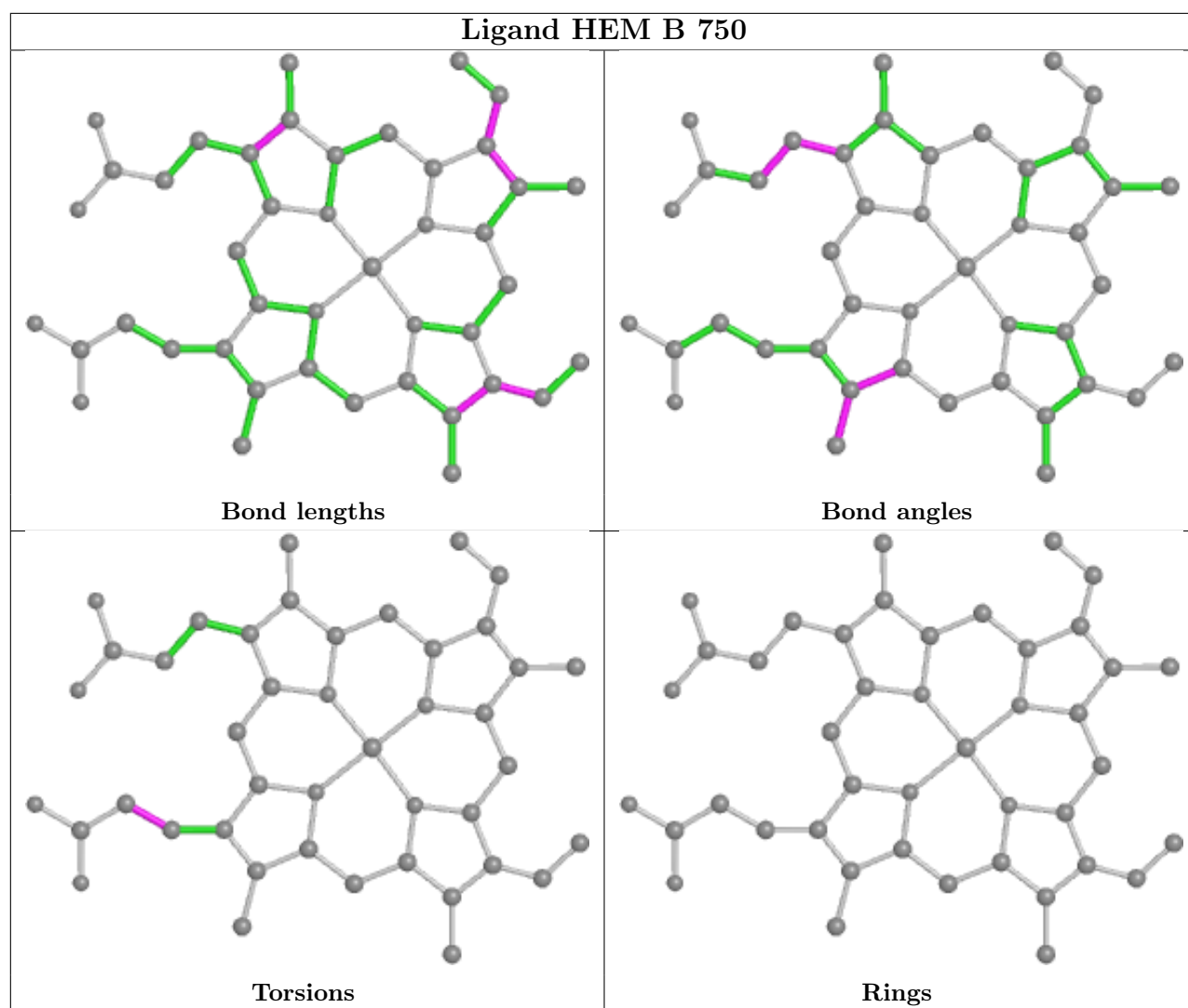
There are no ring outliers.

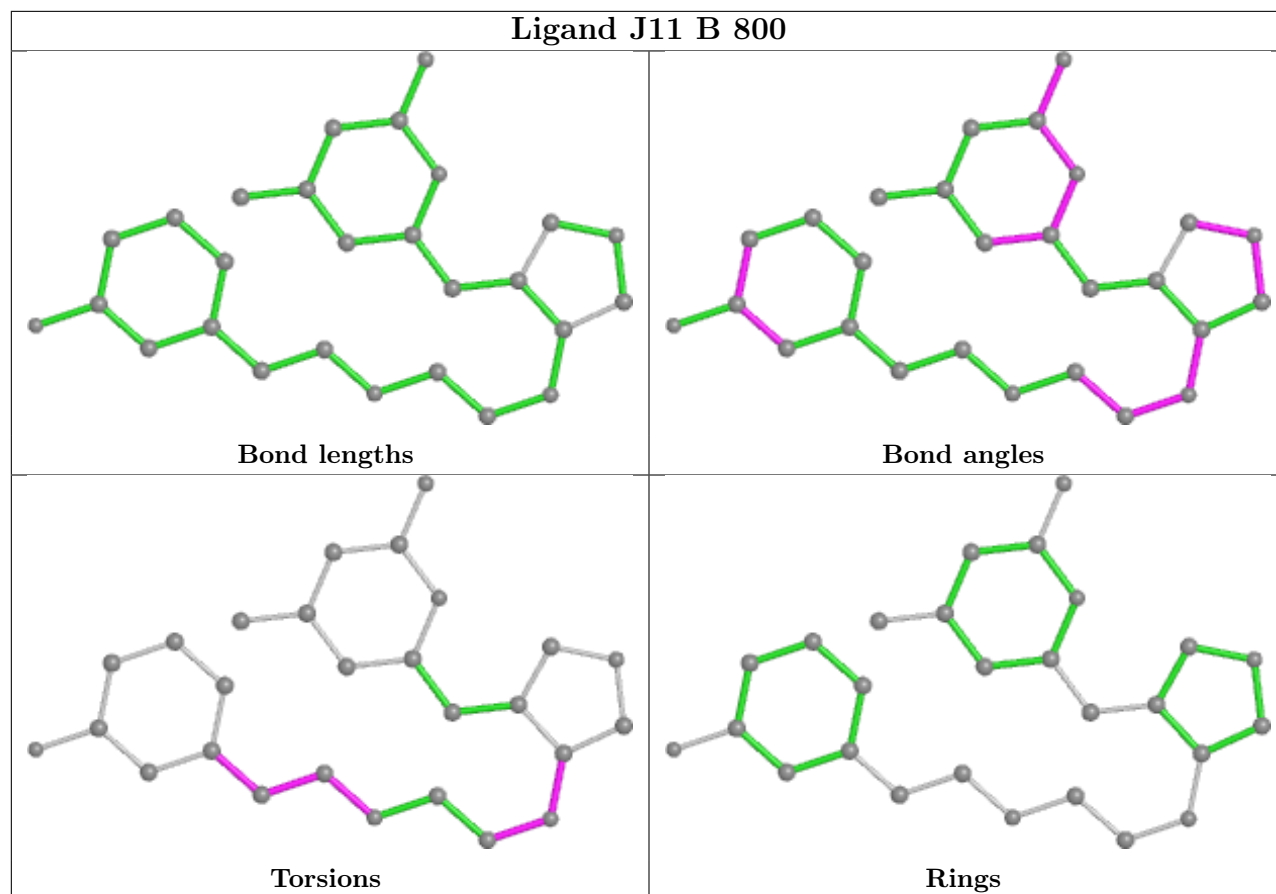
4 monomers are involved in 19 short contacts:

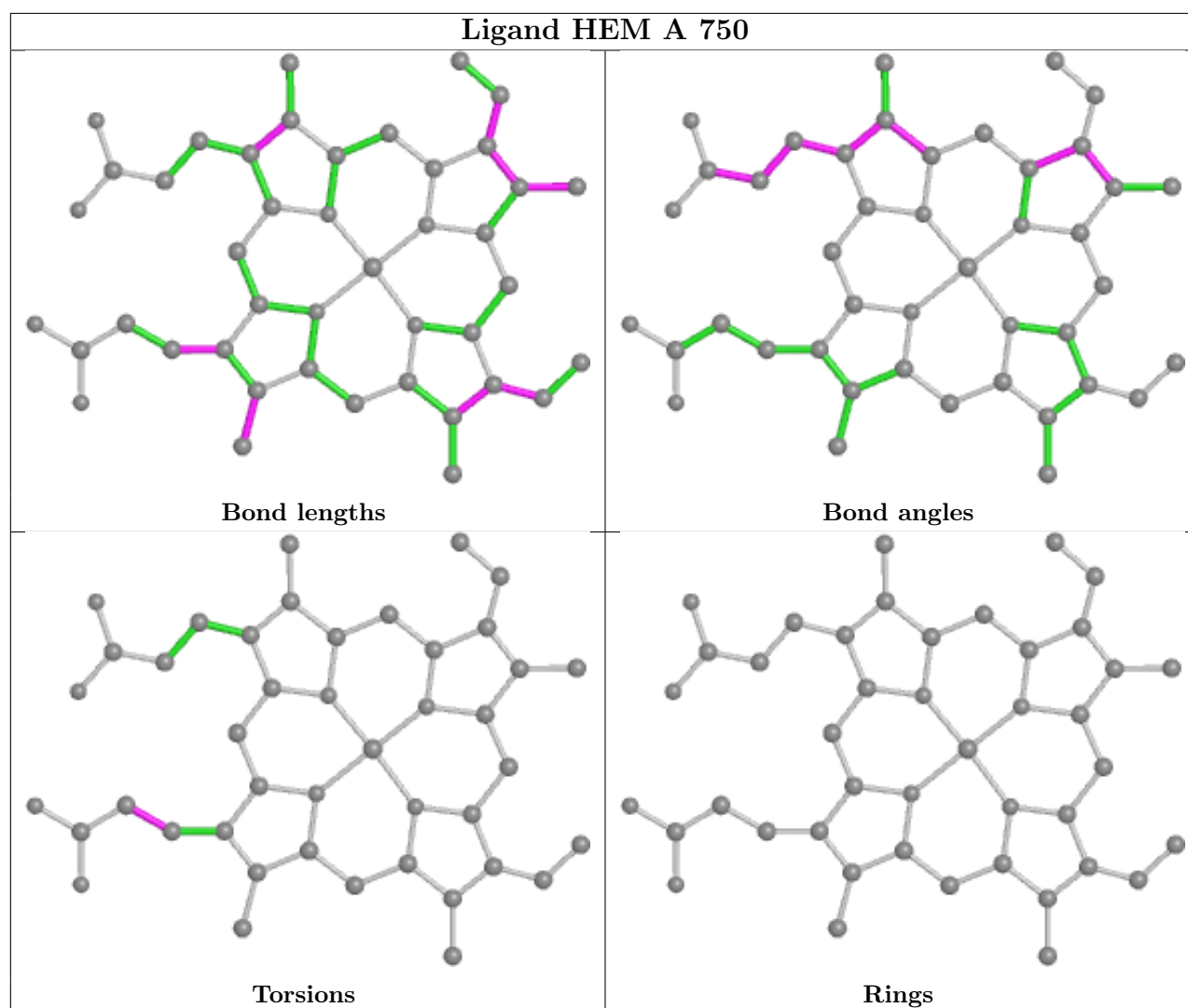
Mol	Chain	Res	Type	Clashes	Symm-Clashes
2	B	750	HEM	12	0
4	B	800	J11	4	0
2	A	750	HEM	5	0
3	B	760	H4B	1	0

The following is a two-dimensional graphical depiction of Mogul quality analysis of bond lengths, bond angles, torsion angles, and ring geometry for all instances of the Ligand of Interest. In addition, ligands with molecular weight > 250 and outliers as shown on the validation Tables will also be included. For torsion angles, if less than 5% of the Mogul distribution of torsion angles is within 10 degrees of the torsion angle in question, then that torsion angle is considered an outlier. Any bond that is central to one or more torsion angles identified as an outlier by Mogul will be highlighted in the graph. For rings, the root-mean-square deviation (RMSD) between the ring in question and similar rings identified by Mogul is calculated over all ring torsion angles. If the average RMSD is greater than 60 degrees and the minimal RMSD between the ring in question and any Mogul-identified rings is also greater than 60 degrees, then that ring is considered an outlier. The outliers are highlighted in purple. The color gray indicates Mogul did not find sufficient equivalents in the CSD to analyse the geometry.









## 5.7 Other polymers [i](#)

There are no such residues in this entry.

## 5.8 Polymer linkage issues [i](#)

There are no chain breaks in this entry.

## 6 Fit of model and data

### 6.1 Protein, DNA and RNA chains

In the following table, the column labelled ‘#RSRZ > 2’ contains the number (and percentage) of RSRZ outliers, followed by percent RSRZ outliers for the chain as percentile scores relative to all X-ray entries and entries of similar resolution. The OWAB column contains the minimum, median, 95<sup>th</sup> percentile and maximum values of the occupancy-weighted average B-factor per residue. The column labelled ‘Q < 0.9’ lists the number of (and percentage) of residues with an average occupancy less than 0.9.

Mol	Chain	Analysed	<RSRZ>	#RSRZ>2	OWAB(Å <sup>2</sup> )	Q<0.9
1	A	407/422 (96%)	0.32	14 (3%) 45 47	36, 66, 111, 135	0
1	B	411/422 (97%)	0.18	13 (3%) 47 50	27, 57, 91, 114	0
All	All	818/844 (96%)	0.25	27 (3%) 46 48	27, 61, 105, 135	0

All (27) RSRZ outliers are listed below:

Mol	Chain	Res	Type	RSRZ
1	B	352	ASP	5.1
1	B	350	THR	4.6
1	A	352	ASP	3.7
1	A	299	ARG	3.3
1	A	350	THR	3.3
1	B	554	PHE	3.2
1	A	355	PHE	3.2
1	A	322	LEU	3.0
1	B	389	GLU	2.8
1	B	351	LYS	2.8
1	B	301	LEU	2.7
1	A	551	PHE	2.6
1	B	349	ARG	2.6
1	A	503	GLU	2.5
1	A	487	GLN	2.5
1	A	706	TYR	2.4
1	B	615	ASP	2.3
1	B	353	GLN	2.3
1	A	494	GLY	2.3
1	B	321	THR	2.2
1	A	394	TYR	2.2
1	A	493	LEU	2.2
1	A	557	LEU	2.2
1	B	718	GLY	2.2

*Continued on next page...*

*Continued from previous page...*

Mol	Chain	Res	Type	RSRZ
1	B	611	ALA	2.1
1	A	523	LEU	2.0
1	B	493	LEU	2.0

## 6.2 Non-standard residues in protein, DNA, RNA chains [i](#)

There are no non-standard protein/DNA/RNA residues in this entry.

## 6.3 Carbohydrates [i](#)

There are no monosaccharides in this entry.

## 6.4 Ligands [i](#)

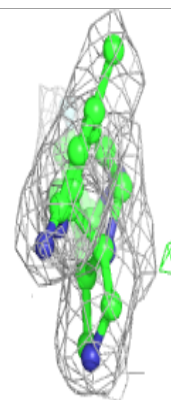
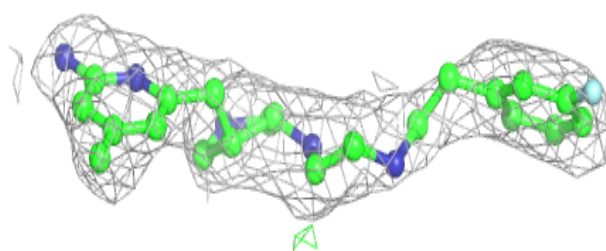
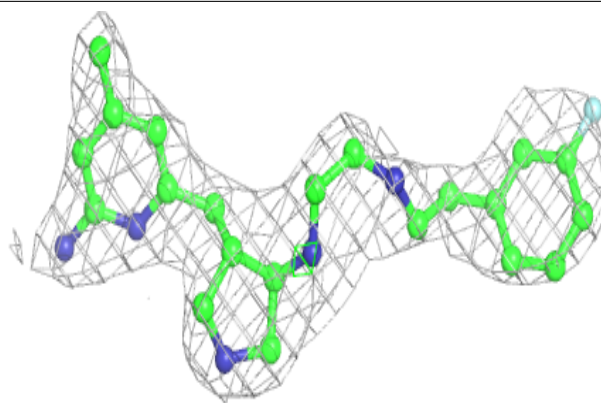
In the following table, the Atoms column lists the number of modelled atoms in the group and the number defined in the chemical component dictionary. The B-factors column lists the minimum, median, 95<sup>th</sup> percentile and maximum values of B factors of atoms in the group. The column labelled 'Q< 0.9' lists the number of atoms with occupancy less than 0.9.

Mol	Type	Chain	Res	Atoms	RSCC	RSR	B-factors(Å <sup>2</sup> )	Q<0.9
5	ACT	B	860	4/4	0.90	0.25	87,89,90,90	0
3	H4B	B	760	17/17	0.94	0.12	46,50,53,55	0
4	J11	B	800	27/27	0.94	0.16	46,55,81,83	0
3	H4B	A	760	17/17	0.94	0.14	45,48,53,54	0
5	ACT	A	860	4/4	0.95	0.20	78,80,80,82	0
4	J11	A	800	27/27	0.95	0.17	49,66,99,102	0
2	HEM	B	750	43/43	0.96	0.16	29,44,57,64	0
2	HEM	A	750	43/43	0.98	0.15	43,48,66,75	0
6	ZN	A	900	1/1	0.99	0.13	54,54,54,54	0

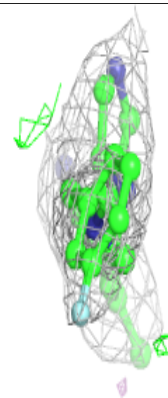
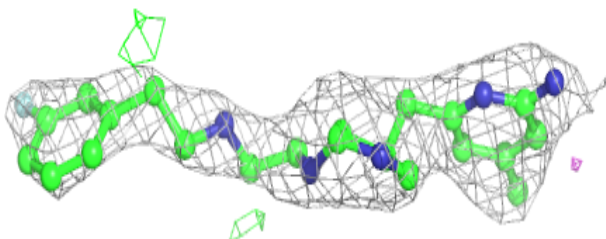
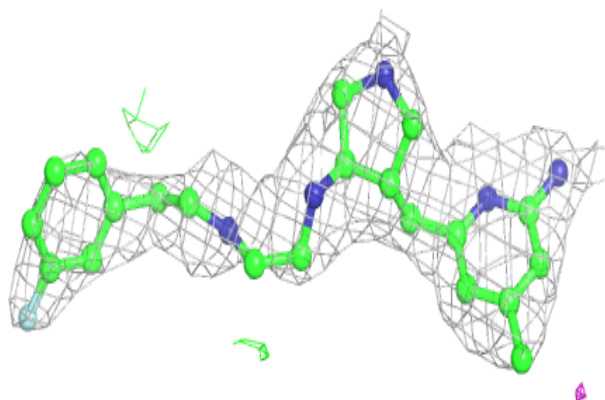
The following is a graphical depiction of the model fit to experimental electron density of all instances of the Ligand of Interest. In addition, ligands with molecular weight > 250 and outliers as shown on the geometry validation Tables will also be included. Each fit is shown from different orientation to approximate a three-dimensional view.

**Electron density around J11 B 800:**

$2mF_o-DF_c$  (at 0.7 rmsd) in gray  
 $mF_o-DF_c$  (at 3 rmsd) in purple (negative)  
and green (positive)

**Electron density around J11 A 800:**

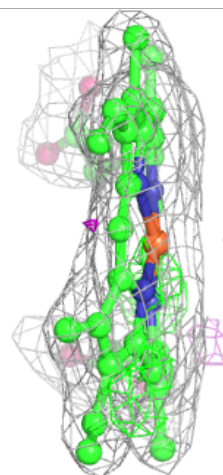
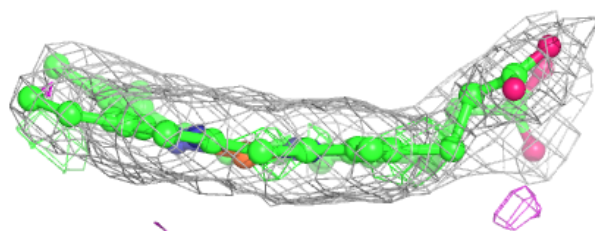
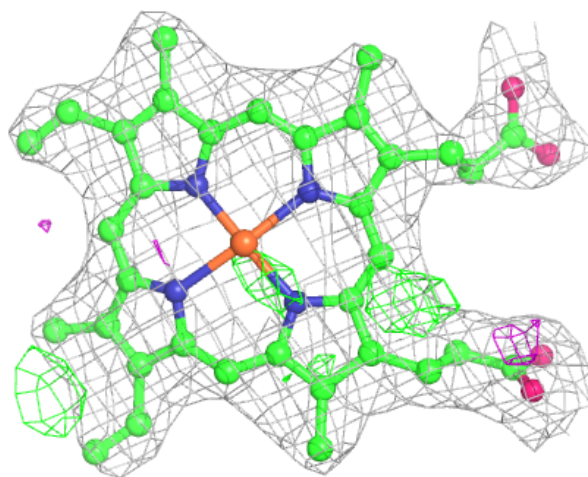
$2mF_o-DF_c$  (at 0.7 rmsd) in gray  
 $mF_o-DF_c$  (at 3 rmsd) in purple (negative)  
and green (positive)





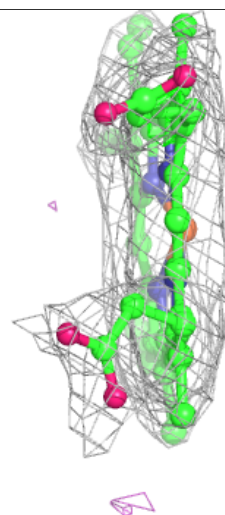
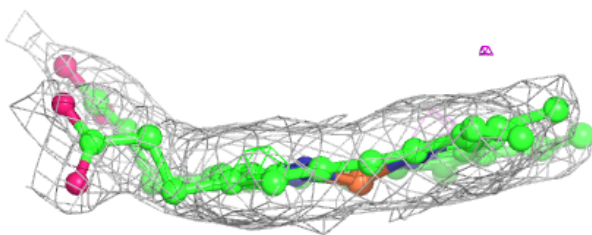
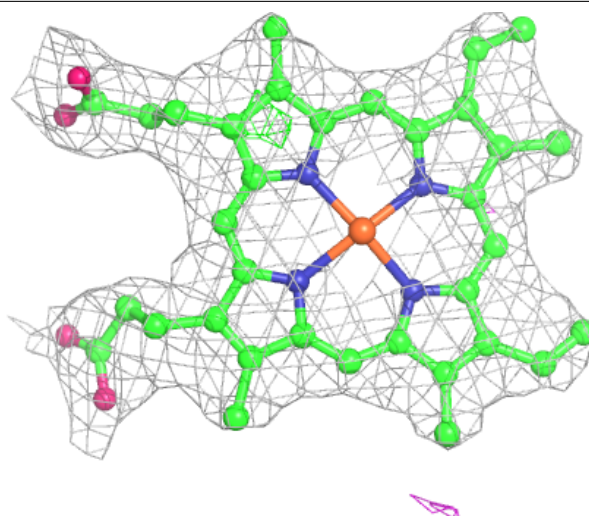
**Electron density around HEM B 750:**

$2mF_o-DF_c$  (at 0.7 rmsd) in gray  
 $mF_o-DF_c$  (at 3 rmsd) in purple (negative)  
and green (positive)



**Electron density around HEM A 750:**

$2mF_o-DF_c$  (at 0.7 rmsd) in gray  
 $mF_o-DF_c$  (at 3 rmsd) in purple (negative)  
and green (positive)



## 6.5 Other polymers [i](#)

There are no such residues in this entry.