



Full wwPDB EM Validation Report ⓘ

Nov 14, 2022 – 06:42 AM EST

PDB ID : 7K1J
EMDB ID : EMD-22624
Title : CryoEM structure of inactivated-form DNA-PK (Complex III)
Authors : Chen, X.; Gellert, M.; Yang, W.
Deposited on : 2020-09-07
Resolution : 3.90 Å(reported)

This is a Full wwPDB EM Validation Report for a publicly released PDB entry.

We welcome your comments at validation@mail.wwpdb.org

A user guide is available at

<https://www.wwpdb.org/validation/2017/EMValidationReportHelp>

with specific help available everywhere you see the ⓘ symbol.

The types of validation reports are described at

<http://www.wwpdb.org/validation/2017/FAQs#types>.

The following versions of software and data (see [references ⓘ](#)) were used in the production of this report:

EMDB validation analysis : 0.0.1.dev43
MolProbity : 4.02b-467
Percentile statistics : 20191225.v01 (using entries in the PDB archive December 25th 2019)
MapQ : 1.9.9
Ideal geometry (proteins) : Engh & Huber (2001)
Ideal geometry (DNA, RNA) : Parkinson et al. (1996)
Validation Pipeline (wwPDB-VP) : 2.31.2

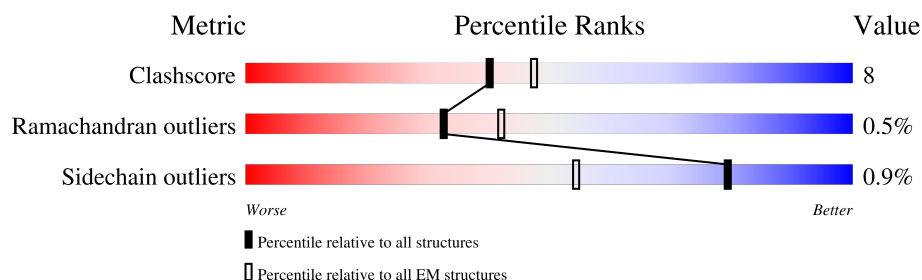
1 Overall quality at a glance

The following experimental techniques were used to determine the structure:

ELECTRON MICROSCOPY

The reported resolution of this entry is 3.90 Å.

Percentile scores (ranging between 0-100) for global validation metrics of the entry are shown in the following graphic. The table shows the number of entries on which the scores are based.



Metric	Whole archive (#Entries)	EM structures (#Entries)
Clashscore	158937	4297
Ramachandran outliers	154571	4023
Sidechain outliers	154315	3826

The table below summarises the geometric issues observed across the polymeric chains and their fit to the map. The red, orange, yellow and green segments of the bar indicate the fraction of residues that contain outliers for ≥ 3 , 2, 1 and 0 types of geometric quality criteria respectively. A grey segment represents the fraction of residues that are not modelled. The numeric value for each fraction is indicated below the corresponding segment, with a dot representing fractions $\leq 5\%$. The upper red bar (where present) indicates the fraction of residues that have poor fit to the EM map (all-atom inclusion $< 40\%$). The numeric value is given above the bar.

Mol	Chain	Length	Quality of chain
1	A	4128	
2	B	609	
3	C	732	
4	D	24	
4	F	24	
5	E	16	
5	G	16	

2 Entry composition

There are 5 unique types of molecules in this entry. The entry contains 38040 atoms, of which 0 are hydrogens and 0 are deuteriums.

In the tables below, the AltConf column contains the number of residues with at least one atom in alternate conformation and the Trace column contains the number of residues modelled with at most 2 atoms.

- Molecule 1 is a protein called DNA-dependent protein kinase catalytic subunit.

Mol	Chain	Residues	Atoms					AltConf	Trace
1	A	3584	Total	C	N	O	S	0	0
			28371	18212	4812	5163	184		

- Molecule 2 is a protein called X-ray repair cross-complementing protein 6.

Mol	Chain	Residues	Atoms					AltConf	Trace
2	B	490	Total	C	N	O	S	0	0
			3954	2533	671	733	17		

- Molecule 3 is a protein called X-ray repair cross-complementing protein 5.

Mol	Chain	Residues	Atoms					AltConf	Trace
3	C	526	Total	C	N	O	S	0	0
			4204	2693	704	784	23		

- Molecule 4 is a DNA chain called DNA (5'-D(*GP*CP*AP*TP*GP*CP*TP*CP*TP*AP*CP*TP*GP*CP*TP*TP*CP*GP*AP*TP*AP*TP*CP*G)-3').

Mol	Chain	Residues	Atoms					AltConf	Trace
4	D	24	Total	C	N	O	P	0	0
			484	233	82	146	23		
4	F	21	Total	C	N	O	P	0	0
			425	204	69	131	21		

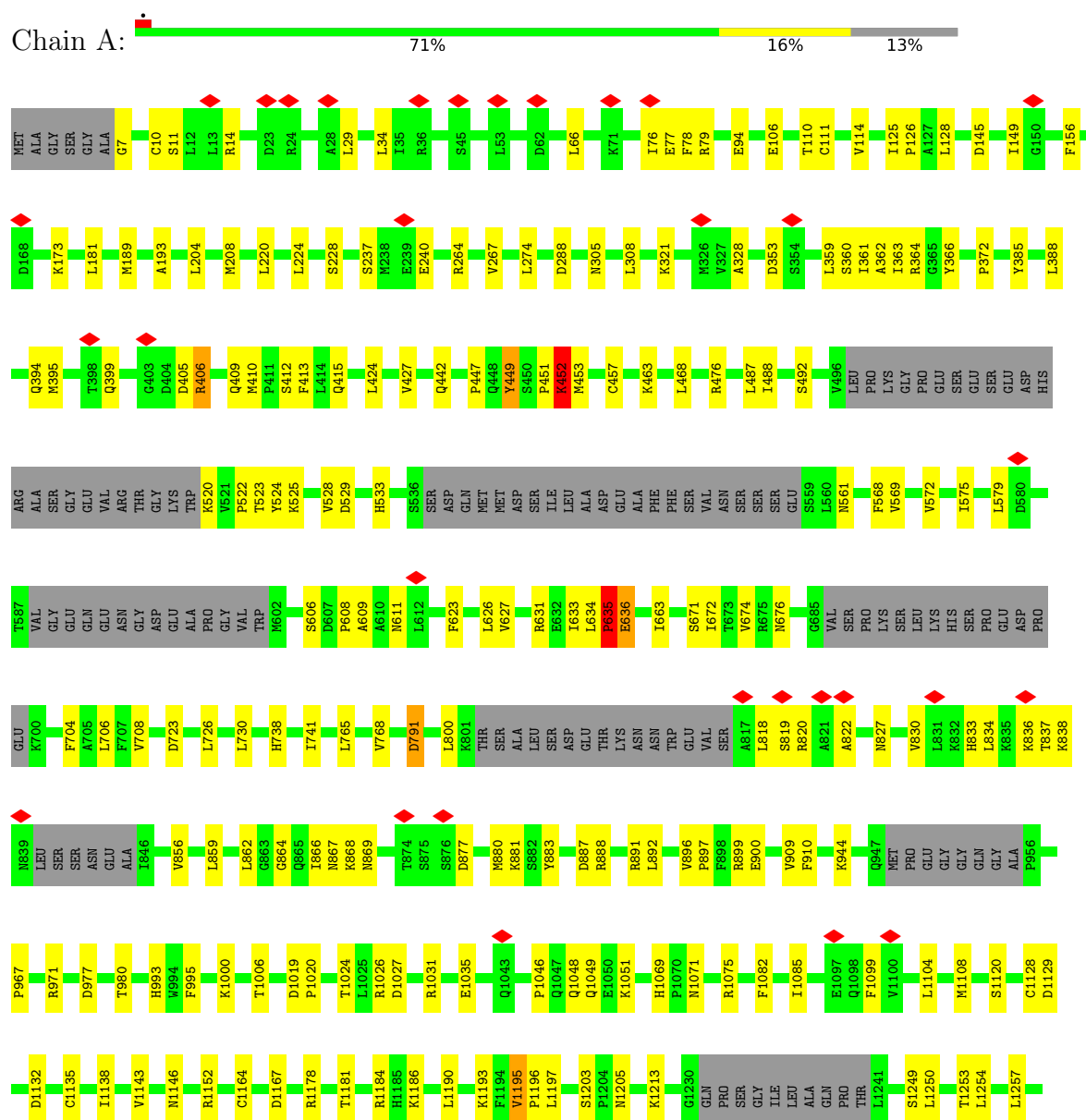
- Molecule 5 is a DNA chain called DNA (5'-D(*AP*AP*GP*CP*AP*GP*TP*AP*GP*AP*GP*CP*A)-3').

Mol	Chain	Residues	Atoms					AltConf	Trace
5	E	13	Total	C	N	O	P	0	0
			269	128	58	71	12		
5	G	16	Total	C	N	O	P	0	0
			333	157	68	92	16		

3 Residue-property plots

These plots are drawn for all protein, RNA, DNA and oligosaccharide chains in the entry. The first graphic for a chain summarises the proportions of the various outlier classes displayed in the second graphic. The second graphic shows the sequence view annotated by issues in geometry and atom inclusion in map density. Residues are color-coded according to the number of geometric quality criteria for which they contain at least one outlier: green = 0, yellow = 1, orange = 2 and red = 3 or more. A red diamond above a residue indicates a poor fit to the EM map for this residue (all-atom inclusion < 40%). Stretches of 2 or more consecutive residues without any outlier are shown as a green connector. Residues present in the sample, but not in the model, are shown in grey.

- Molecule 1: DNA-dependent protein kinase catalytic subunit



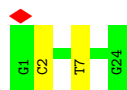




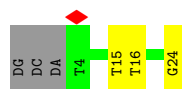
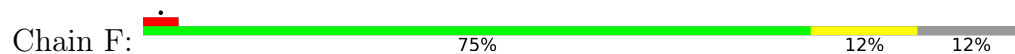
Frequency	Percentage
Daily	63%
Weekly	17%
Monthly	20%



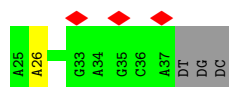
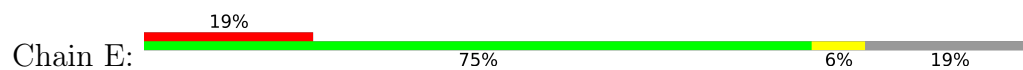




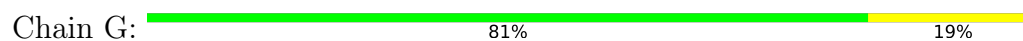
- Molecule 4: DNA (5'-D(*GP*CP*AP*TP*GP*CP*TP*CP*TP*AP*CP*TP*GP*CP*TP*TP*CP*GP*AP*TP*AP*TP*CP*G)-3')



- Molecule 5: DNA (5'-D(*AP*AP*GP*CP*AP*GP*TP*AP*GP*AP*GP*CP*A)-3')



- Molecule 5: DNA (5'-D(*AP*AP*GP*CP*AP*GP*TP*AP*GP*AP*GP*CP*A)-3')



4 Experimental information

Property	Value	Source
EM reconstruction method	SINGLE PARTICLE	Depositor
Imposed symmetry	POINT, Not provided	
Number of particles used	131788	Depositor
Resolution determination method	FSC 0.143 CUT-OFF	Depositor
CTF correction method	PHASE FLIPPING AND AMPLITUDE CORRECTION	Depositor
Microscope	FEI TITAN KRIOS	Depositor
Voltage (kV)	300	Depositor
Electron dose ($e^-/\text{\AA}^2$)	45	Depositor
Minimum defocus (nm)	Not provided	
Maximum defocus (nm)	Not provided	
Magnification	Not provided	
Image detector	GATAN K2 SUMMIT (4k x 4k)	Depositor
Maximum map value	0.116	Depositor
Minimum map value	-0.072	Depositor
Average map value	0.000	Depositor
Map value standard deviation	0.003	Depositor
Recommended contour level	0.013	Depositor
Map size (Å)	408.31998, 408.31998, 408.31998	wwPDB
Map dimensions	352, 352, 352	wwPDB
Map angles (°)	90.0, 90.0, 90.0	wwPDB
Pixel spacing (Å)	1.16, 1.16, 1.16	Depositor

5 Model quality

5.1 Standard geometry

The Z score for a bond length (or angle) is the number of standard deviations the observed value is removed from the expected value. A bond length (or angle) with $|Z| > 5$ is considered an outlier worth inspection. RMSZ is the root-mean-square of all Z scores of the bond lengths (or angles).

Mol	Chain	Bond lengths		Bond angles	
		RMSZ	$\# Z > 5$	RMSZ	$\# Z > 5$
1	A	0.48	0/28937	0.68	16/39135 (0.0%)
2	B	0.39	0/4031	0.67	4/5429 (0.1%)
3	C	0.37	0/4291	0.67	3/5791 (0.1%)
4	D	0.93	0/540	1.06	0/831
4	F	0.85	0/473	1.11	0/727
5	E	0.67	0/304	0.91	0/468
5	G	0.90	0/375	1.00	0/577
All	All	0.48	0/38951	0.70	23/52958 (0.0%)

Chiral center outliers are detected by calculating the chiral volume of a chiral center and verifying if the center is modelled as a planar moiety or with the opposite hand. A planarity outlier is detected by checking planarity of atoms in a peptide group, atoms in a mainchain group or atoms of a sidechain that are expected to be planar.

Mol	Chain	#Chirality outliers	#Planarity outliers
1	A	0	1

There are no bond length outliers.

All (23) bond angle outliers are listed below:

Mol	Chain	Res	Type	Atoms	Z	Observed(°)	Ideal(°)
1	A	468	LEU	CA-CB-CG	9.36	136.83	115.30
1	A	2545	LEU	CA-CB-CG	7.25	131.97	115.30
1	A	359	LEU	CA-CB-CG	6.71	130.73	115.30
1	A	1984	LEU	CA-CB-CG	6.63	130.56	115.30
2	B	202	LEU	CA-CB-CG	6.21	129.58	115.30
1	A	635	PRO	CA-N-CD	-6.06	103.02	111.50
3	C	165	LEU	CA-CB-CG	6.04	129.18	115.30
1	A	2884	LEU	CA-CB-CG	-6.00	101.49	115.30
1	A	29	LEU	CA-CB-CG	5.90	128.86	115.30
1	A	2486	ASP	CB-CG-OD1	5.67	123.40	118.30
1	A	1554	SER	C-N-CA	-5.67	107.53	121.70

Continued on next page...

Continued from previous page...

Mol	Chain	Res	Type	Atoms	Z	Observed(°)	Ideal(°)
1	A	3900	LEU	CA-CB-CG	5.49	127.93	115.30
2	B	356	LEU	CA-CB-CG	5.48	127.90	115.30
1	A	726	LEU	CA-CB-CG	5.44	127.82	115.30
2	B	244	ARG	C-N-CA	5.36	135.09	121.70
2	B	496	ASP	CB-CG-OD1	5.35	123.11	118.30
1	A	3788	LEU	CA-CB-CG	5.35	127.60	115.30
1	A	3775	LEU	CB-CG-CD2	-5.28	102.03	111.00
1	A	2897	LEU	CB-CG-CD2	-5.26	102.06	111.00
1	A	2172	ALA	N-CA-CB	-5.12	102.93	110.10
1	A	3988	LEU	CB-CG-CD2	-5.10	102.33	111.00
3	C	536	LEU	CA-CB-CG	5.07	126.95	115.30
3	C	419	LEU	CA-CB-CG	5.07	126.95	115.30

There are no chirality outliers.

All (1) planarity outliers are listed below:

Mol	Chain	Res	Type	Group
1	A	1553	PHE	Mainchain

5.2 Too-close contacts ⓘ

In the following table, the Non-H and H(model) columns list the number of non-hydrogen atoms and hydrogen atoms in the chain respectively. The H(added) column lists the number of hydrogen atoms added and optimized by MolProbity. The Clashes column lists the number of clashes within the asymmetric unit, whereas Symm-Clashes lists symmetry-related clashes.

Mol	Chain	Non-H	H(model)	H(added)	Clashes	Symm-Clashes
1	A	28371	0	28601	413	0
2	B	3954	0	4042	74	0
3	C	4204	0	4239	96	0
4	D	484	0	274	2	0
4	F	425	0	240	2	0
5	E	269	0	146	1	0
5	G	333	0	179	2	0
All	All	38040	0	37721	571	0

The all-atom clashscore is defined as the number of clashes found per 1000 atoms (including hydrogen atoms). The all-atom clashscore for this structure is 8.

All (571) close contacts within the same asymmetric unit are listed below, sorted by their clash magnitude.

Atom-1	Atom-2	Interatomic distance (Å)	Clash overlap (Å)
2:B:245:LYS:O	2:B:246:VAL:HG13	1.36	1.25
1:A:2122:LEU:HB3	1:A:2123:PRO:CD	1.71	1.21
1:A:2122:LEU:CB	1:A:2123:PRO:HD2	1.85	1.05
2:B:245:LYS:O	2:B:246:VAL:CG1	2.12	0.97
1:A:451:PRO:O	1:A:452:LYS:HG2	1.73	0.88
3:C:19:THR:O	3:C:22:ASN:HB2	1.74	0.87
1:A:2122:LEU:HB3	1:A:2123:PRO:HD2	0.89	0.83
2:B:480:ASN:O	2:B:484:GLN:HB2	1.79	0.83
1:A:2242:VAL:O	1:A:2246:LYS:HB2	1.82	0.80
1:A:635:PRO:HD2	1:A:636:GLU:N	1.96	0.80
1:A:635:PRO:HD2	1:A:636:GLU:H	1.47	0.80
1:A:4078:VAL:O	1:A:4082:ARG:HB2	1.85	0.77
1:A:2120:ARG:HA	1:A:2163:HIS:NE2	2.00	0.76
1:A:2122:LEU:HD22	1:A:2125:TRP:HE1	1.53	0.74
1:A:2977:ASN:O	1:A:2978:LYS:O	2.07	0.73
1:A:2246:LYS:O	1:A:2246:LYS:HE2	1.90	0.71
1:A:451:PRO:O	1:A:452:LYS:CG	2.38	0.70
1:A:451:PRO:O	1:A:452:LYS:CB	2.39	0.70
1:A:633:ILE:C	1:A:635:PRO:HD3	2.13	0.69
1:A:2467:THR:O	1:A:2471:GLU:HB2	1.95	0.67
1:A:836:LYS:HG3	1:A:837:THR:HG23	1.77	0.66
1:A:635:PRO:CD	1:A:636:GLU:N	2.58	0.66
3:C:259:ILE:HG23	3:C:373:ALA:HB1	1.78	0.65
3:C:266:SER:HB3	3:C:361:VAL:HG13	1.78	0.65
1:A:395:MET:O	1:A:399:GLN:NE2	2.30	0.65
1:A:2329:TYR:O	1:A:2333:ARG:HB2	1.96	0.64
1:A:3982:SER:O	1:A:3986:HIS:ND1	2.30	0.64
3:C:163:PHE:HB3	3:C:224:ILE:HG22	1.77	0.64
1:A:2563:LEU:HB3	1:A:2795:GLN:HE21	1.63	0.64
1:A:3283:LEU:O	1:A:3287:ARG:HB2	1.98	0.63
3:C:364:VAL:HG13	3:C:419:LEU:HB3	1.81	0.63
1:A:704:PHE:O	1:A:708:VAL:HG23	1.97	0.63
1:A:1892:LYS:HA	1:A:1896:ILE:HD11	1.81	0.63
1:A:3647:GLY:HA2	1:A:3651:LEU:HB2	1.81	0.62
2:B:132:GLN:OE1	2:B:137:HIS:ND1	2.26	0.62
1:A:791:ASP:N	1:A:791:ASP:OD1	2.32	0.62
2:B:165:ARG:HA	2:B:199:PHE:O	1.99	0.62
1:A:2387:PRO:O	2:B:158:GLN:NE2	2.33	0.61
1:A:633:ILE:O	1:A:635:PRO:HD3	2.01	0.61
1:A:1507:CYS:SG	1:A:1508:LYS:NZ	2.73	0.61
2:B:35:ARG:NH2	2:B:80:ARG:O	2.33	0.61
1:A:2148:LYS:O	1:A:2152:ASN:ND2	2.34	0.61

Continued on next page...

Continued from previous page...

Atom-1	Atom-2	Interatomic distance (Å)	Clash overlap (Å)
1:A:967:PRO:O	1:A:971:ARG:NH2	2.33	0.61
1:A:1143:VAL:HG23	1:A:1197:LEU:HD11	1.84	0.60
2:B:38:LEU:HD11	2:B:167:MET:HG2	1.83	0.60
3:C:219:ASP:OD1	3:C:219:ASP:N	2.33	0.60
2:B:416:GLN:NE2	2:B:429:PRO:O	2.34	0.60
1:A:3883:LEU:HB3	1:A:3970:LEU:HD13	1.84	0.60
1:A:1650:ALA:O	1:A:1654:GLN:HB2	2.02	0.60
1:A:2977:ASN:O	1:A:2978:LYS:C	2.39	0.60
1:A:3689:ASP:OD1	1:A:3689:ASP:N	2.35	0.60
2:B:92:LYS:NZ	2:B:134:MET:O	2.34	0.60
2:B:106:GLN:HE22	2:B:115:ARG:HA	1.65	0.60
1:A:288:ASP:OD1	1:A:288:ASP:N	2.35	0.59
1:A:520:LYS:HB3	5:G:40:DC:H3'	1.84	0.59
1:A:2841:ASN:O	1:A:2845:ASN:ND2	2.36	0.59
1:A:1819:PHE:O	1:A:1823:SER:HB2	2.02	0.59
1:A:442:GLN:NE2	1:A:457:CYS:SG	2.75	0.59
1:A:1205:ASN:HA	1:A:1275:THR:HA	1.83	0.59
1:A:3629:ARG:HH12	1:A:3634:GLN:HB2	1.68	0.59
1:A:3789:ARG:HH11	1:A:3938:ILE:HD11	1.66	0.59
1:A:3050:LYS:O	1:A:3054:GLN:NE2	2.35	0.59
3:C:371:GLU:HB3	3:C:374:ALA:HB3	1.85	0.59
1:A:1167:ASP:N	1:A:1167:ASP:OD1	2.36	0.58
1:A:1833:LEU:HG	1:A:1835:ALA:H	1.68	0.58
1:A:3048:LYS:HD2	1:A:3061:LEU:HD13	1.85	0.58
2:B:245:LYS:O	2:B:245:LYS:HG3	2.03	0.58
1:A:1529:VAL:HG21	1:A:1581:GLU:HG3	1.86	0.58
3:C:312:GLN:H	3:C:324:SER:HB2	1.68	0.58
3:C:88:PHE:HA	3:C:91:LEU:HD12	1.85	0.58
3:C:404:GLN:HB2	3:C:423:GLN:HE21	1.68	0.58
1:A:94:GLU:O	1:A:838:LYS:NZ	2.31	0.58
1:A:1806:ARG:NH1	1:A:1846:ASP:OD1	2.36	0.58
1:A:4083:GLY:HA3	1:A:4091:ALA:HB2	1.86	0.58
1:A:887:ASP:OD2	1:A:891:ARG:NH1	2.37	0.58
1:A:3065:ILE:O	1:A:3069:MET:HB2	2.03	0.58
1:A:634:LEU:N	1:A:635:PRO:HD3	2.18	0.58
1:A:1069:HIS:O	1:A:1075:ARG:NH1	2.36	0.58
1:A:1804:MET:O	1:A:1811:ARG:NH1	2.37	0.58
1:A:1351:THR:OG1	1:A:1352:SER:N	2.35	0.57
3:C:43:GLN:NE2	3:C:488:GLN:OE1	2.37	0.57
3:C:351:VAL:HG21	3:C:407:VAL:HG21	1.84	0.57
1:A:399:GLN:HB3	1:A:1741:ASP:HB3	1.84	0.57

Continued on next page...

Continued from previous page...

Atom-1	Atom-2	Interatomic distance (Å)	Clash overlap (Å)
1:A:3089:LEU:HA	1:A:3092:LEU:HD12	1.86	0.57
1:A:3680:LEU:HD23	1:A:3682:GLU:HG2	1.86	0.57
3:C:57:VAL:HG21	3:C:114:SER:HB3	1.87	0.57
1:A:864:GLY:O	1:A:868:LYS:NZ	2.38	0.57
1:A:1261:LEU:HD13	1:A:1337:VAL:HG12	1.87	0.57
2:B:489:ASN:ND2	3:C:331:MET:O	2.38	0.57
1:A:1048:GLN:O	1:A:1051:LYS:NZ	2.37	0.57
1:A:2194:LEU:O	1:A:2197:THR:OG1	2.22	0.57
1:A:3579:SER:OG	1:A:3580:ASN:N	2.37	0.56
1:A:3813:LYS:HB2	1:A:3925:LEU:HB3	1.86	0.56
2:B:102:ILE:HD11	2:B:142:SER:HB3	1.87	0.56
2:B:470:ARG:HE	3:C:347:LYS:HB3	1.69	0.56
1:A:3771:MET:SD	1:A:3914:SER:OG	2.64	0.56
1:A:3772:ASN:O	1:A:3787:GLN:NE2	2.38	0.56
2:B:468:LYS:O	2:B:517:ARG:NH1	2.39	0.56
1:A:2992:ASP:OD1	1:A:2992:ASP:N	2.35	0.56
1:A:1379:PRO:HB2	1:A:1384:PHE:HD2	1.71	0.56
1:A:2426:HIS:O	1:A:2432:GLN:NE2	2.38	0.56
1:A:3119:VAL:O	1:A:3125:ARG:NH2	2.39	0.56
1:A:3577:GLN:OE1	1:A:3630:ARG:NH1	2.38	0.56
1:A:3117:ILE:HD11	1:A:3128:LYS:HE2	1.88	0.56
1:A:3447:VAL:HG12	1:A:3468:LEU:HD22	1.88	0.56
1:A:3723:ASP:OD2	1:A:3741:ARG:NH2	2.39	0.56
1:A:672:ILE:O	1:A:676:ASN:ND2	2.29	0.56
1:A:1668:PHE:HA	1:A:1671:VAL:HG22	1.86	0.56
3:C:466:LYS:HD3	3:C:471:ASP:HB3	1.88	0.56
1:A:1357:LYS:O	1:A:1361:LYS:NZ	2.38	0.55
1:A:899:ARG:HG3	1:A:900:GLU:HG3	1.87	0.55
3:C:453:ALA:HB2	3:C:536:LEU:HD21	1.88	0.55
1:A:2230:VAL:O	1:A:2234:ASN:ND2	2.39	0.55
1:A:3569:GLN:O	1:A:3573:ASN:ND2	2.39	0.55
1:A:1620:THR:O	1:A:1624:GLN:NE2	2.37	0.55
1:A:3630:ARG:HB3	1:A:3633:ILE:HG13	1.88	0.55
3:C:362:LEU:HB3	3:C:421:TYR:HB3	1.89	0.55
1:A:2099:ALA:O	1:A:2103:HIS:HB2	2.07	0.55
2:B:107:GLU:O	2:B:115:ARG:NH2	2.40	0.55
1:A:1027:ASP:OD1	1:A:1027:ASP:N	2.38	0.55
1:A:3527:GLN:NE2	1:A:3699:LEU:O	2.40	0.55
1:A:2856:SER:OG	1:A:2885:GLN:NE2	2.34	0.55
1:A:3530:VAL:HG11	1:A:3568:ILE:HG21	1.89	0.55
3:C:69:SER:HA	3:C:74:TYR:HB2	1.87	0.55

Continued on next page...

Continued from previous page...

Atom-1	Atom-2	Interatomic distance (Å)	Clash overlap (Å)
3:C:400:ARG:NH2	5:E:26:DA:O3'	2.40	0.55
1:A:3595:GLU:OE2	1:A:3602:ASN:ND2	2.40	0.54
1:A:362:ALA:O	1:A:366:TYR:HB2	2.07	0.54
1:A:1578:ALA:O	1:A:1582:LEU:HB2	2.08	0.54
1:A:488:ILE:O	1:A:492:SER:OG	2.23	0.54
1:A:2130:HIS:NE2	1:A:2163:HIS:O	2.40	0.54
2:B:485:GLN:HG2	3:C:333:TYR:HB2	1.90	0.54
1:A:405:ASP:OD1	1:A:406:ARG:NH1	2.40	0.54
1:A:1664:SER:HA	1:A:1668:PHE:HB3	1.89	0.54
2:B:237:SER:OG	2:B:238:LYS:N	2.41	0.54
3:C:307:LYS:O	3:C:309:ASP:N	2.41	0.54
3:C:489:ARG:HE	3:C:508:ILE:HG22	1.71	0.54
1:A:1261:LEU:HD11	1:A:1340:ARG:HG3	1.89	0.54
1:A:1437:TYR:HA	1:A:1445:ARG:HH21	1.71	0.54
3:C:137:ASP:HA	3:C:166:PRO:HD3	1.89	0.54
1:A:1132:ASP:OD1	1:A:1186:LYS:NZ	2.40	0.54
2:B:337:LEU:HD13	3:C:490:LEU:HD13	1.90	0.54
1:A:818:LEU:HD13	1:A:833:HIS:HB3	1.90	0.53
1:A:2540:LEU:O	1:A:2543:ASN:ND2	2.41	0.53
2:B:491:GLU:O	2:B:495:LEU:HB2	2.08	0.53
1:A:635:PRO:O	1:A:636:GLU:HB3	2.07	0.53
1:A:2393:LEU:HA	1:A:2396:LEU:HG	1.90	0.53
1:A:1886:LYS:O	1:A:1890:HIS:HB3	2.08	0.53
2:B:95:ASN:O	2:B:98:ASN:ND2	2.41	0.53
1:A:859:LEU:O	1:A:867:ASN:ND2	2.41	0.53
1:A:2825:THR:OG1	1:A:2826:LEU:N	2.42	0.53
1:A:3328:ILE:O	1:A:3332:THR:OG1	2.25	0.53
1:A:360:SER:HA	1:A:363:ILE:HD12	1.90	0.53
1:A:3163:THR:O	1:A:3167:ARG:NH1	2.41	0.53
3:C:64:THR:OG1	3:C:75:GLN:NE2	2.42	0.53
1:A:3686:TRP:HE3	1:A:3687:MET:HG2	1.74	0.53
3:C:359:ASN:OD1	3:C:359:ASN:N	2.40	0.52
1:A:1459:HIS:HD2	1:A:1464:LEU:HD13	1.73	0.52
1:A:1769:GLU:O	1:A:1822:ARG:NH1	2.41	0.52
1:A:1833:LEU:HB3	1:A:1836:LEU:HB2	1.91	0.52
1:A:1931:ASN:HA	1:A:1934:LEU:HD21	1.91	0.52
1:A:3815:LEU:HD22	1:A:3930:VAL:HG21	1.90	0.52
1:A:3581:PRO:HA	1:A:3584:LEU:HB3	1.92	0.52
1:A:1274:ARG:NH1	1:A:1351:THR:OG1	2.42	0.52
1:A:1250:LEU:O	1:A:1253:THR:OG1	2.24	0.52
1:A:3130:GLN:NE2	1:A:3174:ASP:OD1	2.39	0.52

Continued on next page...

Continued from previous page...

Atom-1	Atom-2	Interatomic distance (Å)	Clash overlap (Å)
1:A:2398:LEU:HA	1:A:2401:VAL:HG12	1.92	0.52
1:A:2493:ASN:O	1:A:2497:GLU:HB2	2.09	0.52
1:A:1444:ASP:OD1	1:A:1444:ASP:N	2.42	0.52
1:A:2234:ASN:HA	1:A:2237:ILE:HD12	1.90	0.52
1:A:3170:ASP:N	1:A:3170:ASP:OD1	2.42	0.52
2:B:204:HIS:O	2:B:237:SER:N	2.43	0.52
2:B:319:SER:HB2	2:B:326:GLN:HE21	1.73	0.52
1:A:394:GLN:NE2	1:A:1738:ASN:OD1	2.43	0.52
1:A:635:PRO:CD	1:A:636:GLU:H	2.13	0.52
1:A:3411:ASP:N	1:A:3411:ASP:OD1	2.41	0.52
1:A:3753:LYS:HD2	1:A:3803:ILE:HD11	1.90	0.52
3:C:54:ILE:HD12	3:C:86:PRO:HB3	1.90	0.52
1:A:2955:SER:O	1:A:2971:GLN:NE2	2.43	0.51
2:B:219:ASP:N	2:B:219:ASP:OD1	2.42	0.51
2:B:286:ILE:HB	3:C:313:GLY:O	2.10	0.51
2:B:413:LEU:HD23	2:B:432:PHE:HD2	1.74	0.51
1:A:452:LYS:NZ	1:A:452:LYS:HB3	2.26	0.51
2:B:455:THR:O	2:B:458:GLN:NE2	2.43	0.51
1:A:2837:LEU:O	1:A:2841:ASN:ND2	2.43	0.51
1:A:3010:SER:O	1:A:3010:SER:OG	2.28	0.51
1:A:3479:THR:HG23	1:A:3482:LEU:HB3	1.91	0.51
2:B:241:ASP:HA	2:B:245:LYS:HG2	1.93	0.51
3:C:104:GLN:NE2	3:C:106:ASP:O	2.43	0.51
1:A:451:PRO:O	1:A:452:LYS:HB3	2.08	0.51
1:A:3072:GLU:O	1:A:3076:ALA:HB3	2.10	0.51
1:A:3155:VAL:HG23	1:A:3156:PRO:HD3	1.92	0.51
1:A:3335:ARG:O	1:A:3339:ASN:HB2	2.10	0.51
3:C:11:VAL:HG21	3:C:118:ILE:HD11	1.93	0.51
2:B:403:ARG:HD3	4:F:24:DG:H5'	1.93	0.51
3:C:247:TRP:O	3:C:262:ALA:HA	2.10	0.51
2:B:523:ASP:OD1	2:B:523:ASP:N	2.41	0.51
1:A:1135:CYS:HA	1:A:1138:ILE:HG22	1.92	0.51
1:A:2512:ASP:OD1	1:A:2512:ASP:N	2.40	0.51
3:C:58:LEU:HD11	3:C:97:LYS:HE3	1.91	0.51
1:A:3706:ASP:OD1	1:A:3706:ASP:N	2.42	0.51
1:A:3863:ASN:OD1	1:A:3863:ASN:N	2.42	0.51
1:A:3868:VAL:HG22	1:A:4114:PRO:HB2	1.92	0.51
2:B:300:THR:HG1	3:C:291:LYS:HZ1	1.58	0.51
1:A:424:LEU:HD23	1:A:427:VAL:HG22	1.93	0.50
1:A:3731:SER:OG	1:A:3732:LEU:N	2.44	0.50
1:A:3884:LYS:NZ	1:A:3969:ASN:O	2.40	0.50

Continued on next page...

Continued from previous page...

Atom-1	Atom-2	Interatomic distance (Å)	Clash overlap (Å)
1:A:1424:THR:O	1:A:1427:SER:OG	2.30	0.50
1:A:452:LYS:HG3	1:A:453:MET:N	2.26	0.50
1:A:1128:CYS:SG	1:A:1129:ASP:N	2.84	0.50
1:A:529:ASP:O	1:A:533:HIS:ND1	2.41	0.50
1:A:3069:MET:O	1:A:3070:HIS:ND1	2.44	0.50
3:C:6:ASN:O	3:C:51:LYS:NZ	2.45	0.50
3:C:260:ARG:NH2	3:C:368:ARG:O	2.45	0.50
1:A:820:ARG:NH1	4:D:7:DT:OP2	2.45	0.50
1:A:1588:ASP:OD1	1:A:1588:ASP:N	2.40	0.50
2:B:402:PRO:HG2	2:B:406:ILE:HG13	1.93	0.50
3:C:388:ASP:OD1	3:C:388:ASP:N	2.45	0.50
1:A:7:GLY:N	1:A:10:CYS:HG	2.10	0.50
1:A:980:THR:HG22	1:A:980:THR:O	2.12	0.50
1:A:3586:LYS:HE2	1:A:3667:LEU:HD11	1.94	0.50
3:C:346:CYS:SG	3:C:348:SER:OG	2.69	0.50
3:C:139:SER:OG	3:C:201:GLN:NE2	2.45	0.49
1:A:3757:ASP:OD2	1:A:3759:ARG:NH2	2.43	0.49
2:B:51:SER:OG	2:B:54:GLU:O	2.30	0.49
3:C:511:HIS:HA	3:C:514:ASN:HB2	1.93	0.49
1:A:3751:LEU:HB3	1:A:3803:ILE:HB	1.94	0.49
2:B:303:PHE:HB3	2:B:310:LEU:HA	1.95	0.49
1:A:993:HIS:NE2	1:A:1035:GLU:OE1	2.36	0.49
2:B:288:LEU:HB3	3:C:311:ILE:HG13	1.95	0.49
1:A:2978:LYS:HD2	1:A:2981:TRP:CG	2.48	0.49
1:A:3271:ASP:N	1:A:3271:ASP:OD1	2.44	0.49
1:A:627:VAL:O	1:A:631:ARG:HB2	2.12	0.49
1:A:1275:THR:OG1	1:A:1276:VAL:N	2.46	0.49
1:A:3008:TRP:HB3	1:A:3051:LEU:HG	1.93	0.49
1:A:3164:TRP:O	1:A:3186:ARG:NH2	2.46	0.49
2:B:471:PHE:HE1	3:C:344:GLY:HA3	1.77	0.49
1:A:1828:LEU:O	1:A:1883:ARG:NH2	2.42	0.49
3:C:185:LEU:HB2	3:C:514:ASN:HD22	1.77	0.49
1:A:228:SER:O	1:A:228:SER:OG	2.31	0.49
1:A:723:ASP:OD1	1:A:723:ASP:N	2.44	0.49
1:A:800:LEU:HD21	1:A:856:VAL:HG22	1.93	0.49
1:A:3959:MET:SD	1:A:3959:MET:N	2.76	0.48
2:B:273:ILE:HG12	2:B:368:VAL:HG12	1.93	0.48
1:A:1608:ARG:NH2	1:A:2038:GLU:OE1	2.42	0.48
1:A:2205:VAL:HB	1:A:2208:ASP:HB3	1.95	0.48
2:B:389:CYS:HA	2:B:394:VAL:HG12	1.95	0.48
2:B:465:ILE:HG12	2:B:518:LEU:HD11	1.95	0.48

Continued on next page...

Continued from previous page...

Atom-1	Atom-2	Interatomic distance (Å)	Clash overlap (Å)
1:A:1837:ARG:NH1	1:A:1888:ASP:OD2	2.46	0.48
1:A:2457:PRO:HA	1:A:2460:GLU:HG2	1.94	0.48
1:A:3962:ARG:NH1	1:A:4125:GLU:O	2.45	0.48
1:A:1178:ARG:O	1:A:1184:ARG:NH2	2.38	0.48
1:A:2455:LEU:HA	1:A:2458:VAL:HG12	1.96	0.48
1:A:3558:ILE:HA	1:A:3561:LYS:HG2	1.95	0.48
1:A:561:ASN:N	1:A:561:ASN:OD1	2.45	0.48
1:A:1120:SER:O	1:A:1120:SER:OG	2.28	0.48
1:A:1764:GLU:OE2	1:A:1811:ARG:NH2	2.42	0.48
3:C:39:THR:HA	3:C:42:VAL:HG22	1.94	0.48
1:A:2161:ALA:HA	1:A:2164:TRP:HB2	1.95	0.48
1:A:1957:ASN:OD1	1:A:1957:ASN:O	2.32	0.48
1:A:2794:LEU:HA	1:A:2797:VAL:HG12	1.95	0.48
3:C:16:VAL:N	3:C:59:PHE:O	2.44	0.48
3:C:184:ARG:HH22	3:C:520:ALA:HB2	1.78	0.48
1:A:305:ASN:HB3	1:A:308:LEU:HB3	1.96	0.48
1:A:830:VAL:O	1:A:834:LEU:HB2	2.13	0.48
1:A:525:LYS:O	1:A:528:VAL:HG22	2.13	0.48
1:A:1888:ASP:OD1	1:A:1888:ASP:N	2.33	0.48
1:A:3018:SER:O	1:A:3018:SER:OG	2.32	0.48
1:A:3673:ASP:N	1:A:3673:ASP:OD1	2.47	0.48
2:B:270:SER:HB3	2:B:374:LEU:HB2	1.96	0.47
3:C:209:LYS:O	3:C:213:ILE:HG12	2.14	0.47
3:C:378:SER:O	3:C:382:HIS:HB2	2.14	0.47
1:A:623:PHE:O	1:A:626:LEU:N	2.44	0.47
1:A:2103:HIS:O	1:A:2107:SER:CB	2.61	0.47
1:A:14:ARG:HB3	1:A:34:LEU:HD21	1.95	0.47
1:A:3048:LYS:HB3	1:A:3061:LEU:HD22	1.95	0.47
1:A:3794:VAL:HG23	1:A:3802:LEU:HB2	1.95	0.47
1:A:575:ILE:HG22	1:A:579:LEU:HD21	1.96	0.47
1:A:1834:ASP:OD1	1:A:1834:ASP:N	2.46	0.47
2:B:37:SER:OG	2:B:163:HIS:O	2.31	0.47
1:A:3722:PHE:O	1:A:3741:ARG:NH1	2.47	0.47
2:B:306:SER:O	2:B:306:SER:OG	2.32	0.47
3:C:119:GLN:NE2	3:C:157:CYS:SG	2.88	0.47
1:A:2128:PHE:O	1:A:2132:LYS:HB2	2.15	0.47
1:A:606:SER:HB2	1:A:609:ALA:HB2	1.97	0.47
1:A:877:ASP:O	1:A:881:LYS:NZ	2.35	0.47
1:A:1351:THR:HG23	1:A:1353:PRO:HD2	1.97	0.47
1:A:2872:ASP:HB3	1:A:2875:ALA:HB3	1.97	0.47
1:A:2977:ASN:C	1:A:2978:LYS:O	2.53	0.47

Continued on next page...

Continued from previous page...

Atom-1	Atom-2	Interatomic distance (Å)	Clash overlap (Å)
1:A:3378:TYR:OH	1:A:3426:LYS:NZ	2.35	0.47
1:A:3421:ASP:OD1	1:A:3425:ARG:NH2	2.47	0.47
2:B:78:SER:O	2:B:78:SER:OG	2.28	0.47
3:C:138:LEU:O	3:C:201:GLN:NE2	2.41	0.47
1:A:1782:PHE:HA	1:A:1785:ILE:HD12	1.97	0.47
1:A:1818:SER:HA	1:A:1821:ASP:HB2	1.96	0.47
1:A:3545:THR:HG23	1:A:3548:GLY:H	1.80	0.47
1:A:3881:ASP:O	1:A:3885:ARG:NH1	2.47	0.47
2:B:505:ASP:OD1	2:B:505:ASP:N	2.48	0.47
3:C:410:PRO:HA	3:C:419:LEU:HD12	1.97	0.47
1:A:1195:VAL:HG23	1:A:1196:PRO:HD3	1.97	0.47
1:A:3172:LYS:HE3	1:A:3172:LYS:HB3	1.70	0.47
3:C:108:LEU:HD11	3:C:207:ILE:HD12	1.96	0.47
1:A:888:ARG:HG2	1:A:3889:ARG:HD3	1.97	0.47
1:A:1254:LEU:HD11	1:A:1330:TYR:HA	1.97	0.47
4:F:15:DT:H2'	4:F:16:DT:C6	2.50	0.47
1:A:76:ILE:O	1:A:79:ARG:NH2	2.46	0.46
1:A:3662:ILE:HA	1:A:3665:MET:HG2	1.97	0.46
1:A:3719:ILE:HD12	1:A:3740:ILE:HD12	1.97	0.46
3:C:127:PHE:O	3:C:130:ARG:NH2	2.48	0.46
1:A:1459:HIS:NE2	1:A:1520:ALA:O	2.49	0.46
1:A:2123:PRO:HG2	1:A:2125:TRP:HD1	1.81	0.46
3:C:247:TRP:CB	3:C:263:ALA:O	2.64	0.46
1:A:1197:LEU:HD12	1:A:1197:LEU:HA	1.78	0.46
1:A:2088:LEU:HD13	1:A:2148:LYS:HB2	1.96	0.46
1:A:3270:ASP:OD1	1:A:3270:ASP:N	2.49	0.46
1:A:3027:LEU:HD23	1:A:3067:LYS:HD2	1.97	0.46
1:A:3602:ASN:OD1	1:A:3602:ASN:N	2.48	0.46
3:C:17:GLY:O	3:C:21:SER:N	2.42	0.46
3:C:469:LYS:HB2	3:C:469:LYS:HE2	1.72	0.46
1:A:2126:MET:HA	1:A:2126:MET:HE2	1.97	0.46
1:A:447:PRO:HG3	1:A:522:PRO:HG3	1.98	0.46
1:A:1579:VAL:HG13	1:A:1580:LEU:HD12	1.97	0.46
1:A:2856:SER:O	1:A:2860:ASP:HB2	2.15	0.46
3:C:133:GLU:HA	3:C:162:GLN:O	2.16	0.46
3:C:398:ASP:N	3:C:398:ASP:OD1	2.48	0.46
1:A:1938:ARG:HE	1:A:1939:LEU:HD23	1.81	0.46
1:A:2211:LEU:HD23	1:A:2214:ARG:HD2	1.96	0.46
2:B:425:ILE:HG22	2:B:427:VAL:HG13	1.98	0.46
3:C:363:LYS:HG2	3:C:420:VAL:HG12	1.97	0.46
1:A:881:LYS:NZ	1:A:3933:GLU:OE2	2.48	0.45

Continued on next page...

Continued from previous page...

Atom-1	Atom-2	Interatomic distance (Å)	Clash overlap (Å)
1:A:3466:PRO:HB2	1:A:4004:VAL:HG11	1.99	0.45
1:A:321:LYS:HB2	1:A:321:LYS:HE3	1.68	0.45
1:A:2810:SER:OG	1:A:2857:CYS:SG	2.72	0.45
1:A:1249:SER:O	1:A:1249:SER:OG	2.27	0.45
3:C:136:THR:HG22	3:C:138:LEU:H	1.82	0.45
3:C:377:LEU:HD12	3:C:380:LEU:HD23	1.97	0.45
1:A:738:HIS:ND1	1:A:741:ILE:O	2.50	0.45
1:A:1633:TRP:CE2	1:A:1674:THR:HG22	2.52	0.45
1:A:1282:LEU:HD22	1:A:1291:LEU:HD11	1.98	0.45
1:A:1982:ILE:HG21	1:A:2142:ILE:HG13	1.97	0.45
1:A:2931:ARG:NH2	1:A:3043:TYR:OH	2.49	0.45
1:A:3151:LEU:HA	1:A:3197:LEU:HD22	1.98	0.45
1:A:3472:ILE:HA	1:A:3472:ILE:HD13	1.74	0.45
1:A:3545:THR:O	1:A:3549:HIS:ND1	2.50	0.45
1:A:385:TYR:HA	1:A:388:LEU:HB3	1.98	0.45
3:C:168:SER:HA	3:C:192:PHE:HB3	1.99	0.45
1:A:487:LEU:HD11	1:A:568:PHE:HE1	1.81	0.45
1:A:189:MET:HB2	1:A:193:ALA:HB2	1.99	0.45
1:A:452:LYS:HB3	1:A:452:LYS:HZ2	1.82	0.45
1:A:1146:ASN:HD21	1:A:1164:CYS:HB2	1.82	0.45
1:A:228:SER:HB2	1:A:274:LEU:HB2	1.98	0.45
1:A:3195:GLU:O	1:A:3198:THR:OG1	2.32	0.45
1:A:3424:LEU:HD21	1:A:3443:PRO:HG3	1.98	0.45
1:A:452:LYS:CB	1:A:452:LYS:NZ	2.80	0.44
1:A:1190:LEU:HD23	1:A:1190:LEU:HA	1.79	0.44
1:A:1685:ASP:OD1	1:A:1685:ASP:N	2.35	0.44
1:A:1849:ASP:OD1	1:A:1849:ASP:N	2.47	0.44
1:A:3413:TYR:HD2	1:A:3453:ALA:HB2	1.81	0.44
3:C:150:ILE:HD12	3:C:150:ILE:HA	1.88	0.44
1:A:409:GLN:O	1:A:412:SER:OG	2.27	0.44
1:A:1152:ARG:HA	1:A:1152:ARG:HD3	1.78	0.44
1:A:1801:VAL:HA	1:A:1804:MET:HG2	1.98	0.44
1:A:2492:ASP:HB3	1:A:2495:SER:HB3	1.98	0.44
1:A:2991:LYS:HE3	1:A:2991:LYS:HB2	1.72	0.44
1:A:3274:VAL:HA	1:A:3277:VAL:HG12	1.99	0.44
1:A:4064:LEU:HD21	1:A:4077:TYR:HB3	1.99	0.44
2:B:524:GLU:O	2:B:528:LEU:HB3	2.17	0.44
3:C:11:VAL:HB	3:C:132:ILE:HG12	1.99	0.44
1:A:671:SER:HA	1:A:674:VAL:HG12	1.99	0.44
1:A:1560:TYR:O	1:A:1564:SER:OG	2.32	0.44
1:A:1565:GLU:HA	1:A:1568:ASN:HD21	1.83	0.44

Continued on next page...

Continued from previous page...

Atom-1	Atom-2	Interatomic distance (Å)	Clash overlap (Å)
1:A:2540:LEU:HD12	1:A:2543:ASN:ND2	2.33	0.44
2:B:399:ARG:NH1	3:C:516:LEU:O	2.49	0.44
3:C:66:ASN:ND2	3:C:68:LEU:O	2.44	0.44
1:A:1181:THR:HG22	1:A:1184:ARG:HH12	1.83	0.44
1:A:1829:TRP:O	1:A:1883:ARG:NH2	2.50	0.44
1:A:2955:SER:O	1:A:2955:SER:OG	2.35	0.44
2:B:178:ASN:OD1	2:B:178:ASN:N	2.51	0.44
2:B:352:PRO:HA	2:B:394:VAL:HA	1.98	0.44
3:C:520:ALA:O	3:C:523:THR:OG1	2.29	0.44
1:A:523:THR:OG1	1:A:524:TYR:N	2.50	0.44
1:A:1400:VAL:HG13	1:A:1461:ALA:HA	1.99	0.44
1:A:3881:ASP:OD1	1:A:3881:ASP:N	2.36	0.44
1:A:77:GLU:HB2	1:A:78:PHE:HD1	1.83	0.44
1:A:1500:LEU:HD12	1:A:1501:PRO:HD2	2.00	0.44
2:B:37:SER:HB2	2:B:154:PHE:HE1	1.82	0.44
2:B:446:MET:HB2	2:B:448:PHE:HB2	1.99	0.44
3:C:56:LEU:HD21	3:C:80:HIS:HB3	2.00	0.44
1:A:569:VAL:HA	1:A:572:VAL:HG12	2.00	0.44
1:A:608:PRO:HA	1:A:611:ASN:HB3	1.99	0.44
1:A:1031:ARG:HE	1:A:1031:ARG:HB3	1.58	0.44
1:A:1662:ASN:O	1:A:1665:HIS:ND1	2.38	0.44
1:A:1459:HIS:CE1	1:A:1520:ALA:HB1	2.53	0.44
1:A:1848:ILE:HA	1:A:1851:LEU:HB3	1.99	0.44
2:B:440:ALA:HB2	3:C:483:PRO:HA	1.99	0.44
1:A:1071:ASN:O	1:A:1075:ARG:NH1	2.51	0.43
1:A:3329:LEU:O	1:A:3333:THR:OG1	2.30	0.43
2:B:95:ASN:HD21	2:B:99:PHE:HB2	1.83	0.43
1:A:125:ILE:HG23	1:A:126:PRO:HD3	1.99	0.43
1:A:572:VAL:HG23	1:A:626:LEU:HD11	2.00	0.43
1:A:1046:PRO:HA	1:A:1049:GLN:HB3	2.00	0.43
4:D:2:DC:H5"	4:D:2:DC:H6	1.83	0.43
1:A:476:ARG:HE	1:A:476:ARG:HB3	1.72	0.43
1:A:2254:ARG:HA	1:A:2257:PHE:HB3	1.99	0.43
1:A:2559:THR:O	1:A:2563:LEU:HB2	2.18	0.43
1:A:3729:MET:HG3	1:A:3751:LEU:HD11	2.01	0.43
1:A:224:LEU:HD23	1:A:224:LEU:HA	1.84	0.43
1:A:353:ASP:OD1	1:A:353:ASP:N	2.51	0.43
1:A:361:ILE:HD12	1:A:361:ILE:HA	1.84	0.43
1:A:1203:SER:OG	1:A:1205:ASN:ND2	2.51	0.43
1:A:1652:ILE:HG13	1:A:1653:LEU:HG	2.00	0.43
1:A:3753:LYS:HD3	1:A:3758:LEU:HD11	2.01	0.43

Continued on next page...

Continued from previous page...

Atom-1	Atom-2	Interatomic distance (Å)	Clash overlap (Å)
1:A:3916:TRP:CD1	1:A:3960:PRO:HB3	2.53	0.43
2:B:140:ASP:OD1	2:B:140:ASP:N	2.52	0.43
2:B:362:LEU:HA	2:B:362:LEU:HD12	1.78	0.43
1:A:2133:LEU:HD12	1:A:2143:ARG:HG2	2.00	0.43
1:A:2990:GLU:HA	1:A:2993:PHE:HB3	2.00	0.43
2:B:361:TYR:H	3:C:267:ILE:HD11	1.84	0.43
3:C:264:TYR:OH	3:C:368:ARG:NH1	2.46	0.43
1:A:10:CYS:SG	1:A:11:SER:N	2.92	0.43
1:A:111:CYS:HA	1:A:114:VAL:HG12	2.00	0.43
1:A:3646:LYS:HE3	1:A:3646:LYS:HB3	1.78	0.43
1:A:3841:ASP:HA	1:A:3844:THR:HG22	1.99	0.43
1:A:819:SER:HA	1:A:822:ALA:HB3	2.00	0.43
1:A:1019:ASP:OD1	1:A:1019:ASP:N	2.52	0.43
1:A:2859:GLN:NE2	1:A:2880:CYS:SG	2.77	0.43
1:A:3755:GLY:HA2	1:A:3799:ARG:HB2	2.01	0.43
2:B:375:VAL:HB	3:C:541:GLU:H	1.84	0.43
3:C:81:ARG:HH21	3:C:84:MET:HG3	1.84	0.43
3:C:229:GLU:HA	3:C:232:ARG:HG2	1.99	0.43
1:A:995:PHE:HB3	1:A:1006:THR:HG22	2.01	0.43
1:A:2501:LEU:HD12	1:A:2501:LEU:HA	1.82	0.43
1:A:173:LYS:HD3	1:A:173:LYS:HA	1.84	0.43
1:A:866:ILE:O	1:A:869:ASN:ND2	2.44	0.43
1:A:3385:LEU:HD23	1:A:3385:LEU:HA	1.89	0.43
1:A:3516:HIS:H	1:A:3516:HIS:CD2	2.36	0.43
3:C:297:LEU:O	3:C:303:THR:OG1	2.30	0.43
1:A:880:MET:HA	1:A:883:TYR:HB2	2.00	0.43
1:A:1082:PHE:HA	1:A:1085:ILE:HG12	2.01	0.43
1:A:2364:LEU:O	1:A:2368:THR:OG1	2.27	0.43
1:A:3121:LEU:O	1:A:3124:SER:OG	2.37	0.43
1:A:3554:PHE:HD1	1:A:3557:ARG:HH21	1.65	0.43
3:C:384:LEU:HA	3:C:389:MET:HE3	2.01	0.43
3:C:450:GLN:HB3	3:C:537:PHE:CZ	2.54	0.43
1:A:2824:LYS:HE3	1:A:2828:GLU:HG2	2.00	0.42
1:A:892:LEU:HA	1:A:944:LYS:HE3	2.01	0.42
1:A:1000:LYS:HD2	1:A:1000:LYS:HA	1.84	0.42
1:A:1586:SER:HA	1:A:1593:VAL:HG11	2.01	0.42
3:C:188:HIS:H	3:C:232:ARG:NH1	2.17	0.42
3:C:208:VAL:HA	3:C:211:VAL:HG22	2.02	0.42
1:A:415:GLN:HE22	1:A:463:LYS:HG2	1.84	0.42
1:A:1896:ILE:HG21	1:A:1908:GLY:HA2	2.00	0.42
3:C:73:GLN:HG3	3:C:109:ASP:HB3	2.01	0.42

Continued on next page...

Continued from previous page...

Atom-1	Atom-2	Interatomic distance (Å)	Clash overlap (Å)
1:A:237:SER:N	1:A:240:GLU:OE2	2.41	0.42
1:A:2824:LYS:O	1:A:2829:LYS:NZ	2.41	0.42
2:B:38:LEU:HB3	2:B:83:LEU:HD23	2.00	0.42
2:B:67:ILE:HG13	2:B:169:PHE:HE2	1.85	0.42
2:B:268:VAL:HG23	2:B:374:LEU:HD21	2.02	0.42
1:A:909:VAL:H	1:A:909:VAL:HG22	1.56	0.42
1:A:1257:LEU:HD23	1:A:1257:LEU:HA	1.87	0.42
1:A:2187:VAL:HA	1:A:2190:VAL:HG12	2.00	0.42
3:C:325:LYS:O	3:C:326:VAL:C	2.52	0.42
3:C:530:LEU:HA	3:C:533:ILE:HG22	2.00	0.42
1:A:204:LEU:O	1:A:208:MET:HB2	2.20	0.42
1:A:1623:LEU:HD23	1:A:1626:TRP:HE1	1.83	0.42
1:A:1819:PHE:O	1:A:1823:SER:CB	2.68	0.42
1:A:730:LEU:HD23	1:A:730:LEU:HA	1.84	0.42
1:A:827:ASN:OD1	1:A:827:ASN:N	2.52	0.42
1:A:1104:LEU:O	1:A:1108:MET:HG2	2.19	0.42
1:A:1193:LYS:HA	1:A:1193:LYS:HD2	1.81	0.42
1:A:3011:LEU:HD23	1:A:3047:SER:HB3	2.02	0.42
1:A:3929:MET:HB2	1:A:3938:ILE:HB	2.02	0.42
2:B:76:ILE:HD12	2:B:76:ILE:HA	1.91	0.42
1:A:1638:PRO:O	1:A:1641:THR:OG1	2.37	0.42
1:A:1828:LEU:HD23	1:A:1828:LEU:HA	1.90	0.42
1:A:2510:LEU:HA	1:A:2510:LEU:HD23	1.89	0.42
1:A:1264:LEU:HD11	1:A:1341:ILE:HA	2.02	0.42
1:A:1597:LEU:HD21	1:A:1622:ILE:HG12	2.02	0.42
2:B:257:SER:HB3	2:B:259:LEU:HD13	2.01	0.42
3:C:308:GLU:H	3:C:308:GLU:HG2	1.48	0.42
1:A:765:LEU:HA	1:A:768:VAL:HG12	2.02	0.42
1:A:2970:LYS:HB3	1:A:2970:LYS:HE3	1.86	0.42
1:A:3499:ILE:HD12	1:A:3499:ILE:HA	1.88	0.42
2:B:447:PRO:HG2	3:C:368:ARG:HH22	1.85	0.42
3:C:42:VAL:HG12	3:C:54:ILE:HD13	2.01	0.42
1:A:2389:PHE:HD1	1:A:2389:PHE:HA	1.76	0.41
1:A:4112:THR:HA	1:A:4117:LEU:HD11	2.01	0.41
1:A:896:VAL:HA	1:A:897:PRO:HD3	1.94	0.41
1:A:1379:PRO:HB2	1:A:1384:PHE:CD2	2.52	0.41
1:A:2542:LEU:HD23	1:A:2542:LEU:HA	1.85	0.41
1:A:3458:SER:OG	1:A:3461:ALA:N	2.45	0.41
1:A:3547:THR:HA	1:A:3550:LYS:HZ2	1.85	0.41
1:A:3590:ASN:HA	1:A:3593:ARG:HG2	2.02	0.41
3:C:369:ASP:N	3:C:371:GLU:OE1	2.53	0.41

Continued on next page...

Continued from previous page...

Atom-1	Atom-2	Interatomic distance (Å)	Clash overlap (Å)
1:A:128:LEU:HD11	1:A:156:PHE:HE2	1.85	0.41
1:A:1957:ASN:ND2	1:A:1962:TYR:OH	2.53	0.41
1:A:3026:ASP:OD1	1:A:3026:ASP:N	2.53	0.41
1:A:3065:ILE:HG13	1:A:3089:LEU:HD21	2.02	0.41
3:C:45:GLN:HB3	3:C:86:PRO:HG3	2.01	0.41
3:C:458:ILE:O	3:C:462:SER:OG	2.35	0.41
1:A:2227:LYS:NZ	1:A:2229:ALA:HB3	2.35	0.41
1:A:3794:VAL:HA	1:A:3795:PRO:HD3	1.90	0.41
2:B:90:THR:HG21	2:B:103:TYR:HB2	2.01	0.41
3:C:77:ILE:HD13	3:C:77:ILE:HA	1.95	0.41
3:C:243:HIS:CD2	3:C:244:SER:H	2.38	0.41
3:C:273:LYS:HE3	3:C:273:LYS:HB3	1.88	0.41
1:A:328:ALA:HB2	1:A:372:PRO:HB3	2.02	0.41
1:A:1601:LEU:HD23	1:A:1601:LEU:HA	1.91	0.41
1:A:2205:VAL:O	1:A:2209:GLU:N	2.52	0.41
1:A:3480:LEU:HD12	1:A:3480:LEU:HA	1.92	0.41
1:A:3603:LYS:HE3	1:A:3603:LYS:HB2	1.91	0.41
5:G:25:DA:H2"	5:G:26:DA:C8	2.55	0.41
1:A:2362:VAL:HG13	1:A:2366:LYS:HZ3	1.86	0.41
1:A:2393:LEU:HD23	1:A:2396:LEU:HD12	2.03	0.41
2:B:358:LYS:HA	2:B:358:LYS:HD2	1.89	0.41
1:A:1186:LYS:HD2	1:A:1186:LYS:HA	1.88	0.41
1:A:1808:ASP:OD1	1:A:1808:ASP:N	2.52	0.41
1:A:2277:LEU:HA	1:A:2280:VAL:HG22	2.03	0.41
3:C:10:VAL:HA	3:C:131:HIS:O	2.21	0.41
3:C:98:ILE:HD12	3:C:98:ILE:HA	1.92	0.41
1:A:1813:SER:O	1:A:1817:GLN:HB2	2.21	0.41
1:A:1867:ILE:O	1:A:1871:MET:HG3	2.21	0.41
1:A:3362:LEU:HD22	1:A:3380:ARG:HH12	1.85	0.41
1:A:3469:LEU:HD23	1:A:3469:LEU:HA	1.93	0.41
1:A:3647:GLY:O	1:A:3652:LEU:N	2.52	0.41
1:A:3767:LEU:HD23	1:A:3767:LEU:HA	1.91	0.41
2:B:329:LEU:HD23	2:B:333:GLU:HB3	2.02	0.41
1:A:106:GLU:O	1:A:110:THR:OG1	2.27	0.41
1:A:149:ILE:HG23	1:A:181:LEU:HD11	2.03	0.41
1:A:220:LEU:HD13	1:A:267:VAL:HG21	2.03	0.41
1:A:1641:THR:O	1:A:1645:VAL:HG23	2.21	0.41
1:A:2276:LEU:HA	1:A:2279:ILE:HD12	2.03	0.41
1:A:2420:PHE:HE2	1:A:2439:ILE:HD11	1.86	0.41
1:A:2482:ASP:OD2	1:A:2530:ARG:NH1	2.54	0.41
1:A:3190:LEU:HA	1:A:3193:ILE:HG22	2.02	0.41

Continued on next page...

Continued from previous page...

Atom-1	Atom-2	Interatomic distance (Å)	Clash overlap (Å)
1:A:3309:GLU:HB3	1:A:3310:ASN:H	1.74	0.41
1:A:3382:PHE:O	1:A:3386:SER:OG	2.28	0.41
2:B:83:LEU:HD12	2:B:111:PRO:HD3	2.02	0.41
2:B:98:ASN:HD22	2:B:98:ASN:HA	1.63	0.41
2:B:265:LYS:HD2	2:B:265:LYS:HA	1.90	0.41
2:B:458:GLN:HB3	2:B:525:PHE:HE1	1.86	0.41
3:C:489:ARG:NE	3:C:508:ILE:HG22	2.36	0.41
1:A:663:ILE:HD13	1:A:663:ILE:HA	1.91	0.41
1:A:2531:LEU:HD11	1:A:2545:LEU:HD21	2.02	0.41
1:A:3137:GLU:OE2	1:A:3167:ARG:NH2	2.54	0.41
1:A:3496:ILE:H	1:A:3496:ILE:HG13	1.70	0.41
2:B:92:LYS:HD3	2:B:135:MET:HA	2.03	0.41
1:A:862:LEU:HD12	1:A:862:LEU:HA	1.91	0.40
1:A:1736:PHE:HA	1:A:1739:TYR:HD2	1.85	0.40
1:A:2103:HIS:O	1:A:2107:SER:HB3	2.21	0.40
2:B:407:PRO:HG2	3:C:486:ARG:HD2	2.02	0.40
1:A:410:MET:HA	1:A:413:PHE:HD2	1.86	0.40
1:A:800:LEU:HA	1:A:800:LEU:HD23	1.86	0.40
1:A:3470:GLN:HE22	1:A:4007:LYS:HE3	1.86	0.40
1:A:3484:THR:HA	1:A:3487:ILE:HG22	2.03	0.40
1:A:1591:LYS:HB3	1:A:1591:LYS:HE2	1.94	0.40
1:A:1751:GLU:O	1:A:1788:ARG:NH2	2.54	0.40
1:A:2221:LYS:O	1:A:2221:LYS:NZ	2.42	0.40
1:A:3534:ILE:H	1:A:3534:ILE:HG12	1.67	0.40
1:A:3640:PHE:HZ	1:A:3670:MET:HB3	1.87	0.40
2:B:474:ARG:HH11	2:B:474:ARG:HD2	1.77	0.40
1:A:364:ARG:HA	1:A:364:ARG:HD3	1.86	0.40
1:A:706:LEU:H	1:A:706:LEU:HG	1.67	0.40
1:A:1605:PHE:CE1	1:A:1608:ARG:HD3	2.56	0.40
1:A:1952:ILE:HA	1:A:1955:VAL:HG22	2.04	0.40
1:A:2842:ARG:O	1:A:2846:THR:OG1	2.26	0.40
1:A:3938:ILE:HD12	1:A:3938:ILE:HG23	1.90	0.40
3:C:338:LYS:HA	3:C:396:ALA:HB3	2.04	0.40
1:A:449:TYR:HD1	1:A:449:TYR:HA	1.72	0.40
1:A:868:LYS:HE3	1:A:868:LYS:HB3	1.89	0.40
1:A:1554:SER:O	1:A:1555:HIS:C	2.56	0.40
1:A:3344:GLU:HA	1:A:3345:PRO:HD3	1.94	0.40

There are no symmetry-related clashes.

5.3 Torsion angles

5.3.1 Protein backbone

In the following table, the Percentiles column shows the percent Ramachandran outliers of the chain as a percentile score with respect to all PDB entries followed by that with respect to all EM entries.

The Analysed column shows the number of residues for which the backbone conformation was analysed, and the total number of residues.

Mol	Chain	Analysed	Favoured	Allowed	Outliers	Percentiles	
1	A	3538/4128 (86%)	3015 (85%)	506 (14%)	17 (0%)	29	67
2	B	486/609 (80%)	401 (82%)	81 (17%)	4 (1%)	19	57
3	C	522/732 (71%)	447 (86%)	72 (14%)	3 (1%)	25	63
All	All	4546/5469 (83%)	3863 (85%)	659 (14%)	24 (0%)	32	67

All (24) Ramachandran outliers are listed below:

Mol	Chain	Res	Type
1	A	977	ASP
1	A	2246	LYS
1	A	2978	LYS
2	B	245	LYS
2	B	246	VAL
2	B	473	TYR
3	C	308	GLU
1	A	452	LYS
1	A	635	PRO
1	A	636	GLU
3	C	324	SER
1	A	1956	PHE
1	A	2122	LEU
1	A	2123	PRO
1	A	2467	THR
1	A	2548	PRO
1	A	264	ARG
1	A	3083	SER
3	C	322	PRO
2	B	144	SER
1	A	2225	HIS
1	A	2547	SER
1	A	1020	PRO
1	A	2226	PRO

5.3.2 Protein sidechains ⓘ

In the following table, the Percentiles column shows the percent sidechain outliers of the chain as a percentile score with respect to all PDB entries followed by that with respect to all EM entries.

The Analysed column shows the number of residues for which the sidechain conformation was analysed, and the total number of residues.

Mol	Chain	Analysed	Rotameric	Outliers	Percentiles	
1	A	3120/3671 (85%)	3090 (99%)	30 (1%)	76	86
2	B	444/548 (81%)	442 (100%)	2 (0%)	88	93
3	C	473/649 (73%)	469 (99%)	4 (1%)	81	89
All	All	4037/4868 (83%)	4001 (99%)	36 (1%)	79	87

All (36) residues with a non-rotameric sidechain are listed below:

Mol	Chain	Res	Type
1	A	66	LEU
1	A	145	ASP
1	A	406	ARG
1	A	449	TYR
1	A	452	LYS
1	A	791	ASP
1	A	910	PHE
1	A	1024	THR
1	A	1026	ARG
1	A	1099	PHE
1	A	1195	VAL
1	A	1213	LYS
1	A	1590	THR
1	A	1837	ARG
1	A	1888	ASP
1	A	2122	LEU
1	A	2124	SER
1	A	2126	MET
1	A	2246	LYS
1	A	2352	HIS
1	A	2355	THR
1	A	2899	ARG
1	A	3155	VAL
1	A	3653	ARG
1	A	3695	LEU
1	A	3794	VAL

Continued on next page...

Continued from previous page...

Mol	Chain	Res	Type
1	A	3864	ARG
1	A	3881	ASP
1	A	3934	THR
1	A	4119	ARG
2	B	245	LYS
2	B	473	TYR
3	C	308	GLU
3	C	325	LYS
3	C	399	LYS
3	C	409	PHE

Sometimes sidechains can be flipped to improve hydrogen bonding and reduce clashes. All (51) such sidechains are listed below:

Mol	Chain	Res	Type
1	A	54	GLN
1	A	322	GLN
1	A	415	GLN
1	A	442	GLN
1	A	485	GLN
1	A	720	GLN
1	A	833	HIS
1	A	867	ASN
1	A	925	GLN
1	A	1126	GLN
1	A	1205	ASN
1	A	1598	ASN
1	A	1737	ASN
1	A	1859	ASN
1	A	2042	GLN
1	A	2105	HIS
1	A	2152	ASN
1	A	2234	ASN
1	A	2270	ASN
1	A	2348	GLN
1	A	2523	ASN
1	A	2543	ASN
1	A	2795	GLN
1	A	2831	ASN
1	A	2834	GLN
1	A	2885	GLN
1	A	3104	GLN
1	A	3327	ASN

Continued on next page...

Continued from previous page...

Mol	Chain	Res	Type
1	A	3423	GLN
1	A	3470	GLN
1	A	3501	HIS
1	A	3516	HIS
1	A	3569	GLN
1	A	3573	ASN
1	A	3643	HIS
1	A	3697	ASN
1	A	3927	ASN
1	A	3966	GLN
1	A	4087	HIS
2	B	98	ASN
2	B	152	ASN
2	B	326	GLN
2	B	405	ASN
2	B	486	HIS
3	C	45	GLN
3	C	75	GLN
3	C	119	GLN
3	C	246	HIS
3	C	423	GLN
3	C	511	HIS
3	C	514	ASN

5.3.3 RNA [i](#)

There are no RNA molecules in this entry.

5.4 Non-standard residues in protein, DNA, RNA chains [i](#)

There are no non-standard protein/DNA/RNA residues in this entry.

5.5 Carbohydrates [i](#)

There are no monosaccharides in this entry.

5.6 Ligand geometry [i](#)

There are no ligands in this entry.

5.7 Other polymers [i](#)

There are no such residues in this entry.

5.8 Polymer linkage issues [i](#)

There are no chain breaks in this entry.

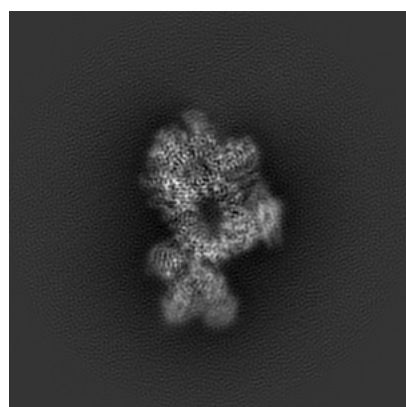
6 Map visualisation [i](#)

This section contains visualisations of the EMDB entry EMD-22624. These allow visual inspection of the internal detail of the map and identification of artifacts.

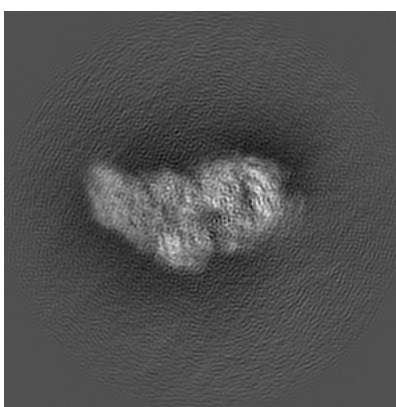
No raw map or half-maps were deposited for this entry and therefore no images, graphs, etc. pertaining to the raw map can be shown.

6.1 Orthogonal projections [i](#)

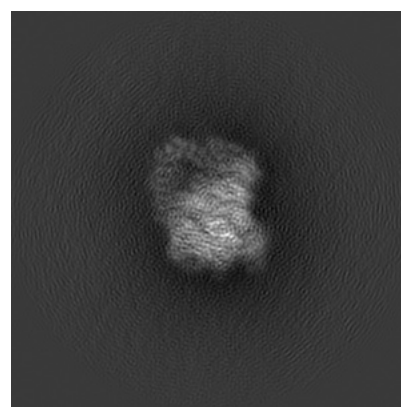
6.1.1 Primary map



X



Y

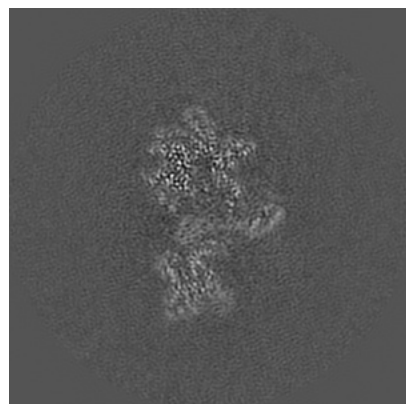


Z

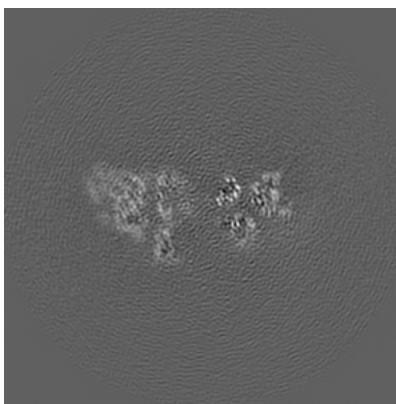
The images above show the map projected in three orthogonal directions.

6.2 Central slices [i](#)

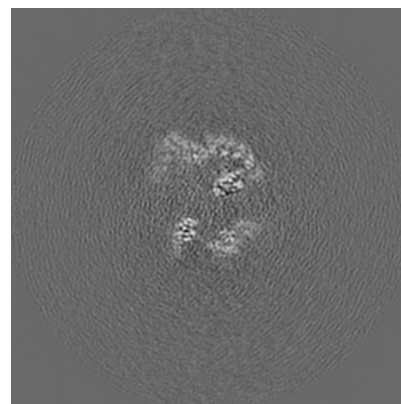
6.2.1 Primary map



X Index: 176



Y Index: 176

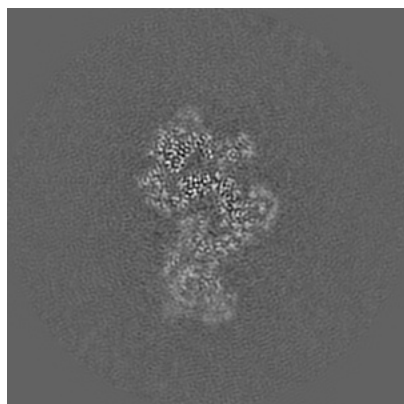


Z Index: 176

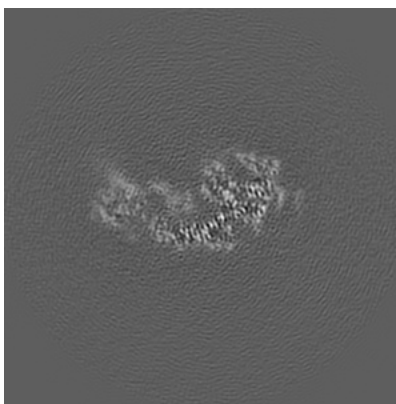
The images above show central slices of the map in three orthogonal directions.

6.3 Largest variance slices [i](#)

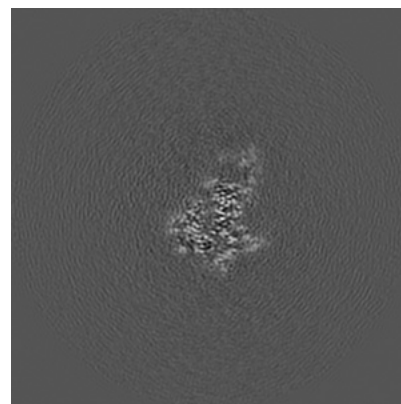
6.3.1 Primary map



X Index: 187



Y Index: 153



Z Index: 196

The images above show the largest variance slices of the map in three orthogonal directions.

6.4 Orthogonal surface views [i](#)

6.4.1 Primary map



X



Y



Z

The images above show the 3D surface view of the map at the recommended contour level 0.013. These images, in conjunction with the slice images, may facilitate assessment of whether an appropriate contour level has been provided.

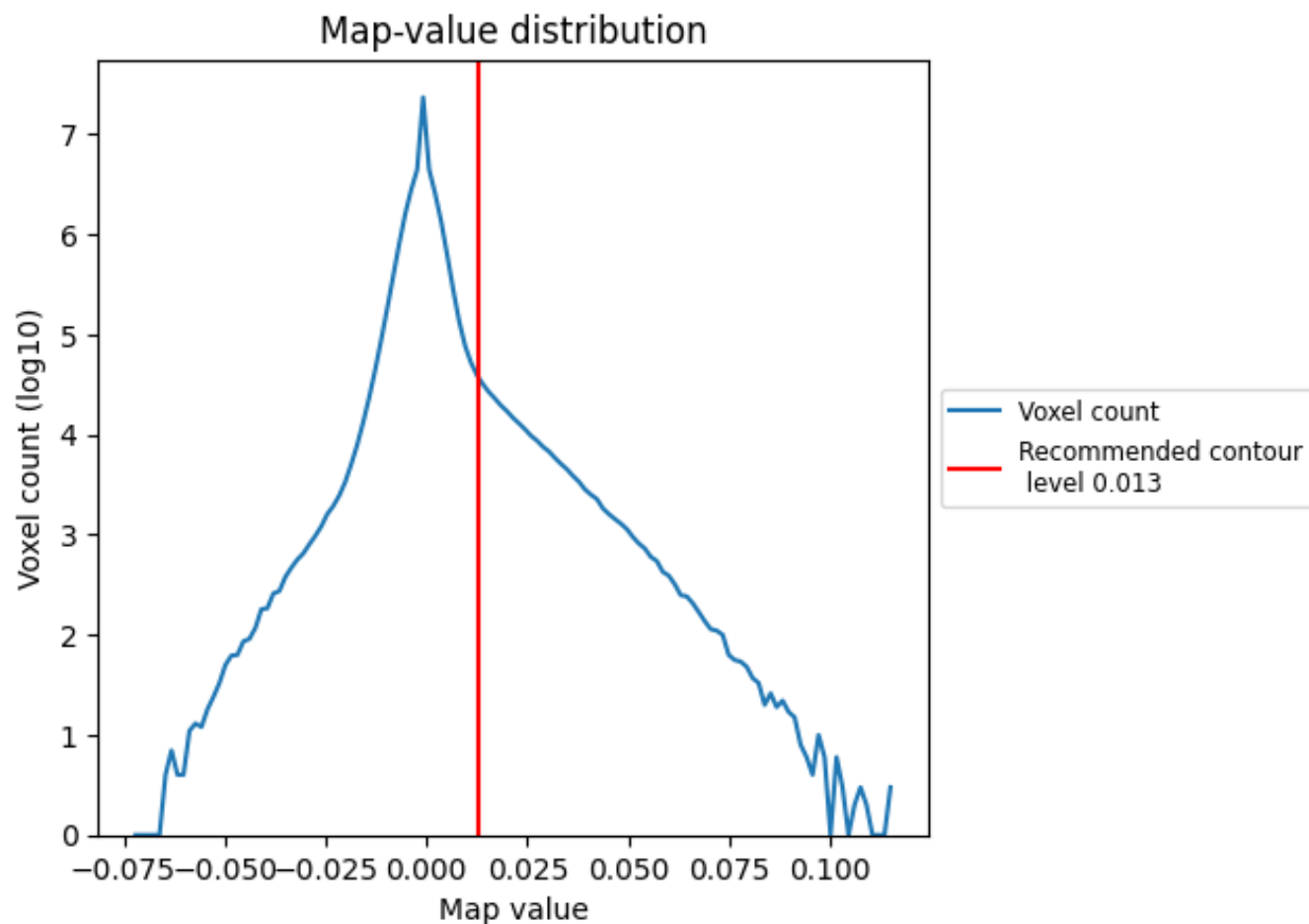
6.5 Mask visualisation

This section was not generated. No masks/segmentation were deposited.

7 Map analysis [i](#)

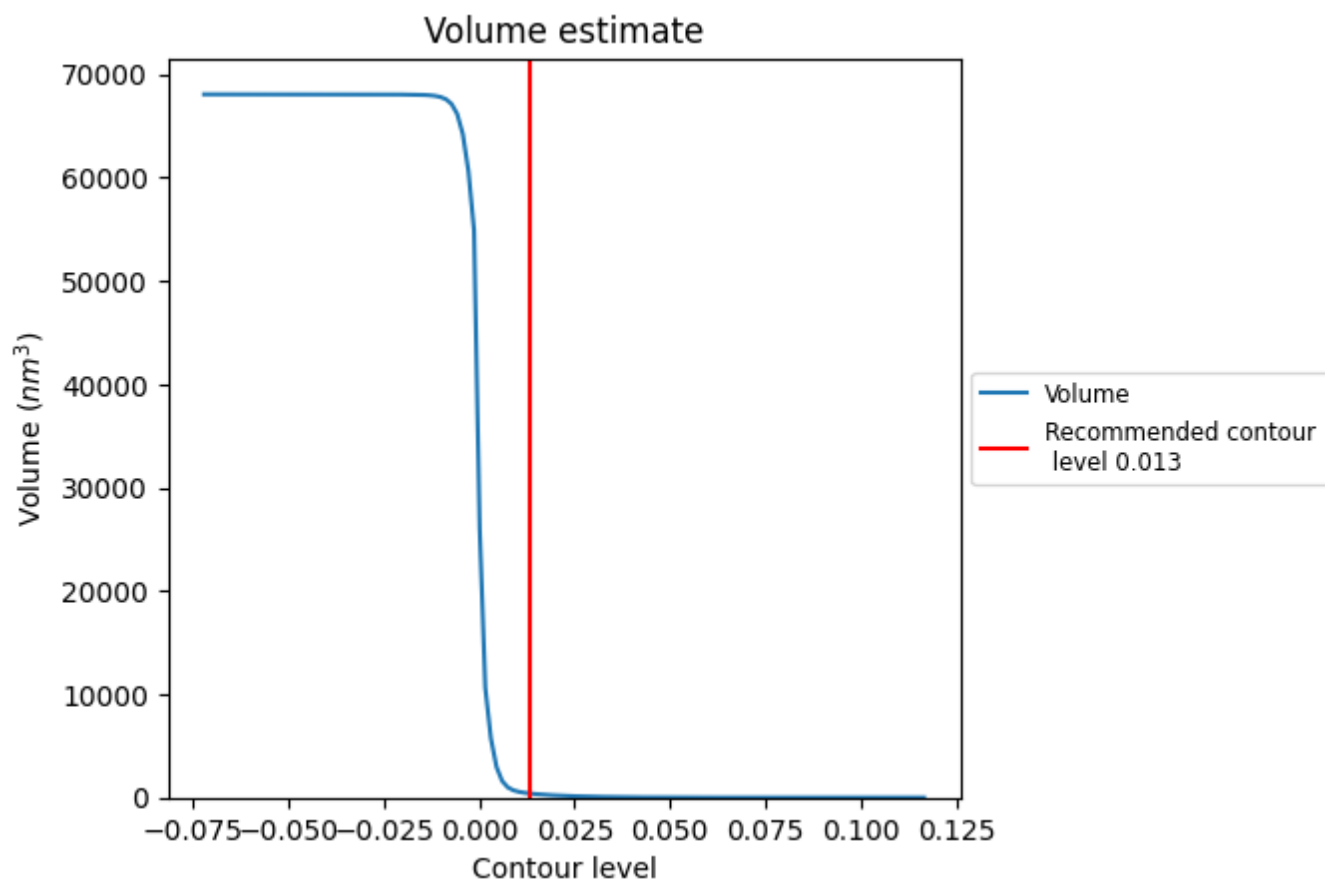
This section contains the results of statistical analysis of the map.

7.1 Map-value distribution [i](#)



The map-value distribution is plotted in 128 intervals along the x-axis. The y-axis is logarithmic. A spike in this graph at zero usually indicates that the volume has been masked.

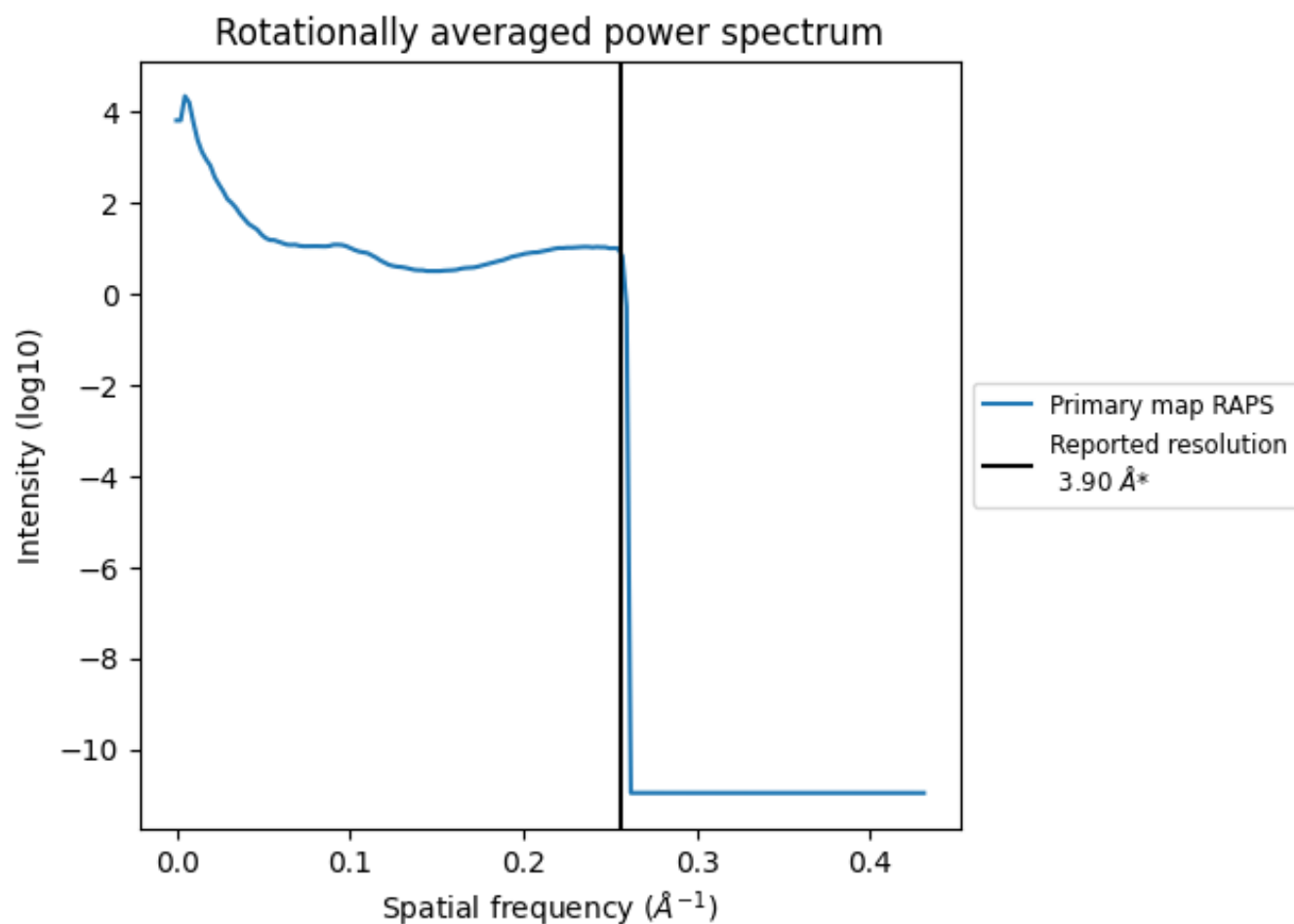
7.2 Volume estimate [i](#)



The volume at the recommended contour level is 408 nm³; this corresponds to an approximate mass of 369 kDa.

The volume estimate graph shows how the enclosed volume varies with the contour level. The recommended contour level is shown as a vertical line and the intersection between the line and the curve gives the volume of the enclosed surface at the given level.

7.3 Rotationally averaged power spectrum ⓘ



*Reported resolution corresponds to spatial frequency of 0.256 Å⁻¹

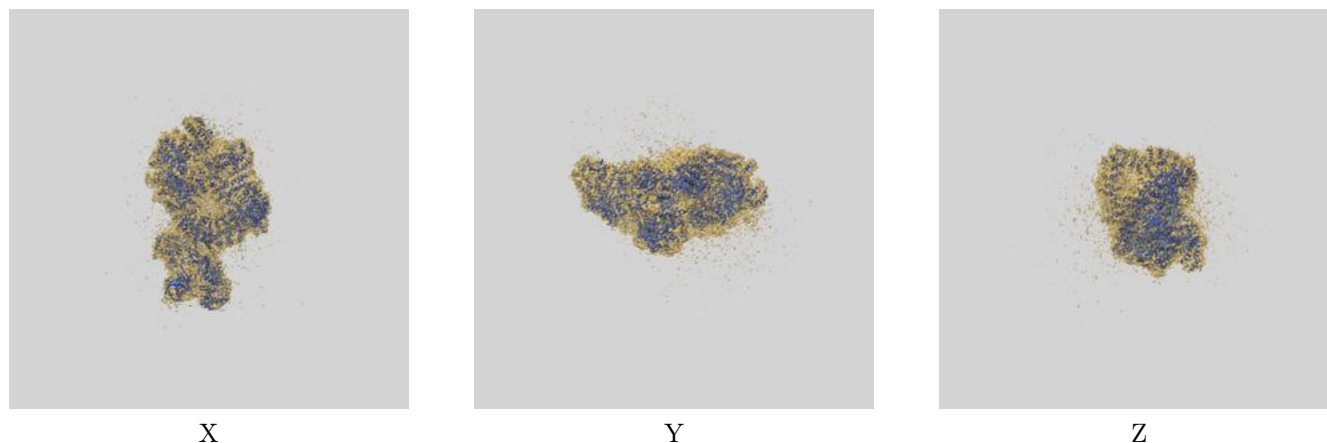
8 Fourier-Shell correlation ⓘ

This section was not generated. No FSC curve or half-maps provided.

9 Map-model fit [i](#)

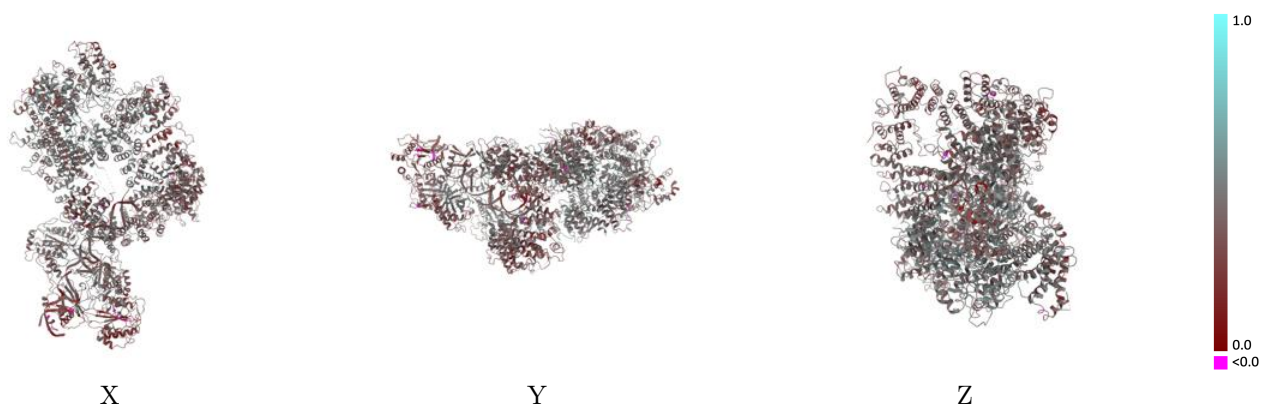
This section contains information regarding the fit between EMDB map EMD-22624 and PDB model 7K1J. Per-residue inclusion information can be found in [section 3](#) on [page 4](#).

9.1 Map-model overlay [i](#)



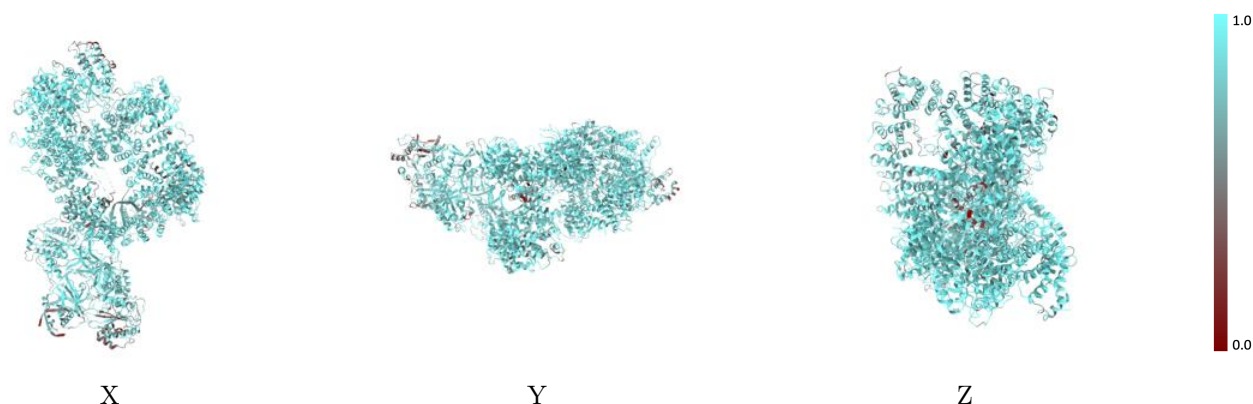
The images above show the 3D surface view of the map at the recommended contour level 0.013 at 50% transparency in yellow overlaid with a ribbon representation of the model coloured in blue. These images allow for the visual assessment of the quality of fit between the atomic model and the map.

9.2 Q-score mapped to coordinate model [i](#)



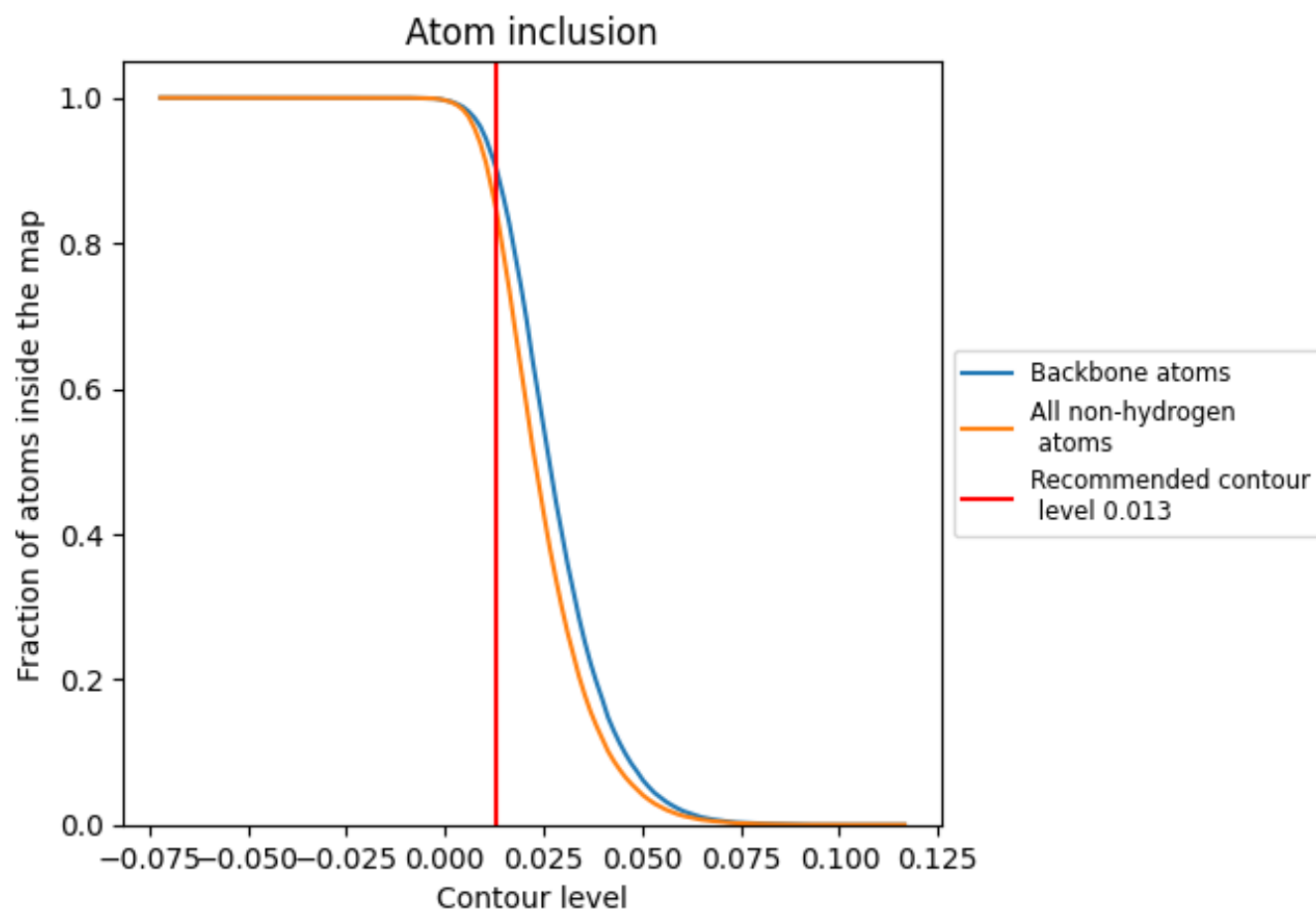
The images above show the model with each residue coloured according to its Q-score. This shows their resolvability in the map with higher Q-score values reflecting better resolvability. Please note: Q-score is calculating the resolvability of atoms, and thus high values are only expected at resolutions at which atoms can be resolved. Low Q-score values may therefore be expected for many entries.

9.3 Atom inclusion mapped to coordinate model [i](#)



The images above show the model with each residue coloured according to its atom inclusion. This shows to what extent they are inside the map at the recommended contour level (0.013).

9.4 Atom inclusion [i](#)



At the recommended contour level, 90% of all backbone atoms, 85% of all non-hydrogen atoms, are inside the map.

9.5 Map-model fit summary ⓘ

The table lists the average atom inclusion at the recommended contour level (0.013) and Q-score for the entire model and for each chain.

Chain	Atom inclusion	Q-score
All	<div><div></div>0.8466</div>	<div><div></div>0.4070</div>
A	<div><div></div>0.8657</div>	<div><div></div>0.4220</div>
B	<div><div></div>0.8335</div>	<div><div></div>0.4050</div>
C	<div><div></div>0.7489</div>	<div><div></div>0.3490</div>
D	<div><div></div>0.8099</div>	<div><div></div>0.3300</div>
E	<div><div></div>0.6617</div>	<div><div></div>0.2150</div>
F	<div><div></div>0.8212</div>	<div><div></div>0.3170</div>
G	<div><div></div>0.8589</div>	<div><div></div>0.3190</div>

1.0

0.0

<0.0