



wwPDB X-ray Structure Validation Summary Report ⓘ

May 26, 2020 – 02:22 pm BST

PDB ID : 3K4Y
Title : Crystal Structure of Isopentenyl Phosphate Kinase from *M. jannaschii* in complex with IPP
Authors : Dellas, N.; Noel, J.P.
Deposited on : 2009-10-06
Resolution : 2.54 Å(reported)

This is a wwPDB X-ray Structure Validation Summary Report for a publicly released PDB entry.

We welcome your comments at validation@mail.wwpdb.org

A user guide is available at

<https://www.wwpdb.org/validation/2017/XrayValidationReportHelp>

with specific help available everywhere you see the ⓘ symbol.

The following versions of software and data (see [references ⓘ](#)) were used in the production of this report:

MolProbity : 4.02b-467
Mogul : 1.8.5 (274361), CSD as541be (2020)
Xtriage (Phenix) : 1.13
EDS : 2.11
Percentile statistics : 20191225.v01 (using entries in the PDB archive December 25th 2019)
Refmac : 5.8.0158
CCP4 : 7.0.044 (Gargrove)
Ideal geometry (proteins) : Engh & Huber (2001)
Ideal geometry (DNA, RNA) : Parkinson et al. (1996)
Validation Pipeline (wwPDB-VP) : 2.11

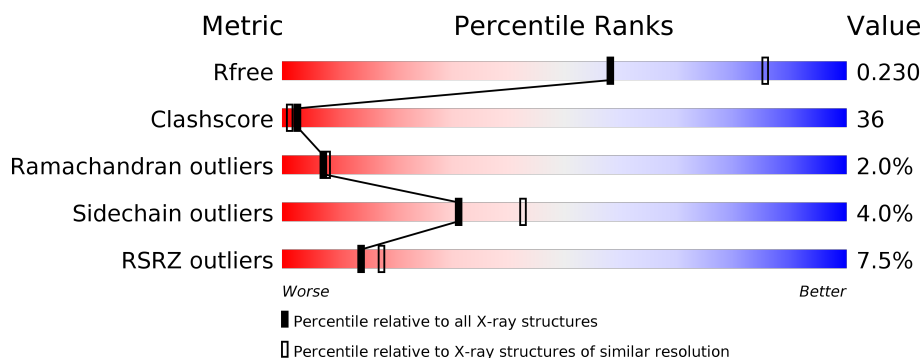
1 Overall quality at a glance

The following experimental techniques were used to determine the structure:

X-RAY DIFFRACTION

The reported resolution of this entry is 2.54 Å.

Percentile scores (ranging between 0-100) for global validation metrics of the entry are shown in the following graphic. The table shows the number of entries on which the scores are based.



Metric	Whole archive (#Entries)	Similar resolution (#Entries, resolution range(Å))
R_{free}	130704	1284 (2.56-2.52)
Clashscore	141614	1332 (2.56-2.52)
Ramachandran outliers	138981	1315 (2.56-2.52)
Sidechain outliers	138945	1315 (2.56-2.52)
RSRZ outliers	127900	1272 (2.56-2.52)

The table below summarises the geometric issues observed across the polymeric chains and their fit to the electron density. The red, orange, yellow and green segments on the lower bar indicate the fraction of residues that contain outliers for ≥ 3 , 2, 1 and 0 types of geometric quality criteria respectively. A grey segment represents the fraction of residues that are not modelled. The numeric value for each fraction is indicated below the corresponding segment, with a dot representing fractions $\leq 5\%$. The upper red bar (where present) indicates the fraction of residues that have poor fit to the electron density. The numeric value is given above the bar.

Mol	Chain	Length	Quality of chain
1	A	266	<div> <div>3%</div> <div>59%</div> <div>36%</div> <div>••</div> </div>
1	B	266	<div> <div>11%</div> <div>49%</div> <div>39%</div> <div>5%</div> <div>7%</div> </div>

The following table lists non-polymeric compounds, carbohydrate monomers and non-standard residues in protein, DNA, RNA chains that are outliers for geometric or electron-density-fit criteria:

Mol	Type	Chain	Res	Chirality	Geometry	Clashes	Electron density
2	IPE	A	300[A]	-	-	X	-
2	IPE	A	300[B]	-	-	X	-
2	IPE	B	300[A]	-	-	X	-
3	SO4	B	263	-	-	X	-

2 Entry composition

There are 4 unique types of molecules in this entry. The entry contains 4246 atoms, of which 0 are hydrogens and 0 are deuteriums.

In the tables below, the ZeroOcc column contains the number of atoms modelled with zero occupancy, the AltConf column contains the number of residues with at least one atom in alternate conformation and the Trace column contains the number of residues modelled with at most 2 atoms.

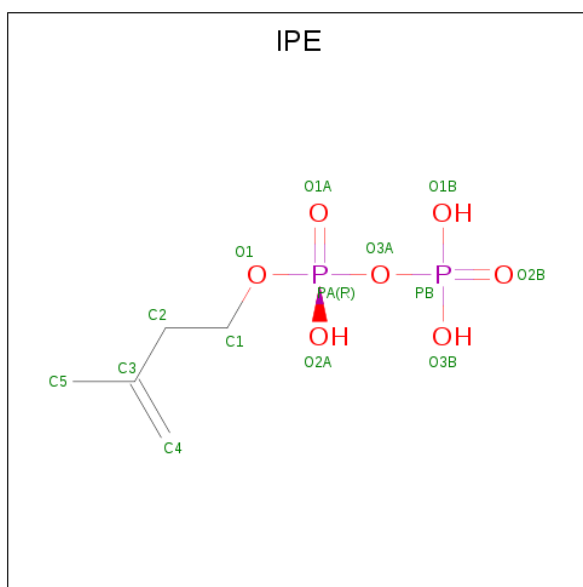
- Molecule 1 is a protein called isopentenyl phosphate kinase.

Mol	Chain	Residues	Atoms					ZeroOcc	AltConf	Trace
1	A	260	Total	C	N	O	S	0	0	0
			2077	1338	348	383	8			
1	B	248	Total	C	N	O	S	0	0	0
			1997	1294	335	360	8			

There are 14 discrepancies between the modelled and reference sequences:

Chain	Residue	Modelled	Actual	Comment	Reference
A	-5	GLY	-	EXPRESSION TAG	UNP Q60352
A	-4	SER	-	EXPRESSION TAG	UNP Q60352
A	-3	HIS	-	EXPRESSION TAG	UNP Q60352
A	-2	GLY	-	EXPRESSION TAG	UNP Q60352
A	-1	GLY	-	EXPRESSION TAG	UNP Q60352
A	0	SER	-	EXPRESSION TAG	UNP Q60352
A	223	GLU	ASP	CONFLICT	UNP Q60352
B	-5	GLY	-	EXPRESSION TAG	UNP Q60352
B	-4	SER	-	EXPRESSION TAG	UNP Q60352
B	-3	HIS	-	EXPRESSION TAG	UNP Q60352
B	-2	GLY	-	EXPRESSION TAG	UNP Q60352
B	-1	GLY	-	EXPRESSION TAG	UNP Q60352
B	0	SER	-	EXPRESSION TAG	UNP Q60352
B	223	GLU	ASP	CONFLICT	UNP Q60352

- Molecule 2 is 3-METHYLBUT-3-ENYL TRIHYDROGEN DIPHOSPHATE (three-letter code: IPE) (formula: C₅H₁₂O₇P₂).



Mol	Chain	Residues	Atoms				ZeroOcc	AltConf
2	A	1	Total	C	O	P	0	1
			28	10	14	4		
2	B	1	Total	C	O	P	0	1
			28	10	14	4		

- Molecule 3 is SULFATE ION (three-letter code: SO4) (formula: O₄S).



Mol	Chain	Residues	Atoms			ZeroOcc	AltConf
3	A	1	Total	O	S	0	0
			5	4	1		
3	A	1	Total	O	S	0	0
			5	4	1		

Continued on next page...

Continued from previous page...

Mol	Chain	Residues	Atoms			ZeroOcc	AltConf
3	B	1	Total	O	S	0	0
			5	4	1		
3	B	1	Total	O	S	0	0
			5	4	1		

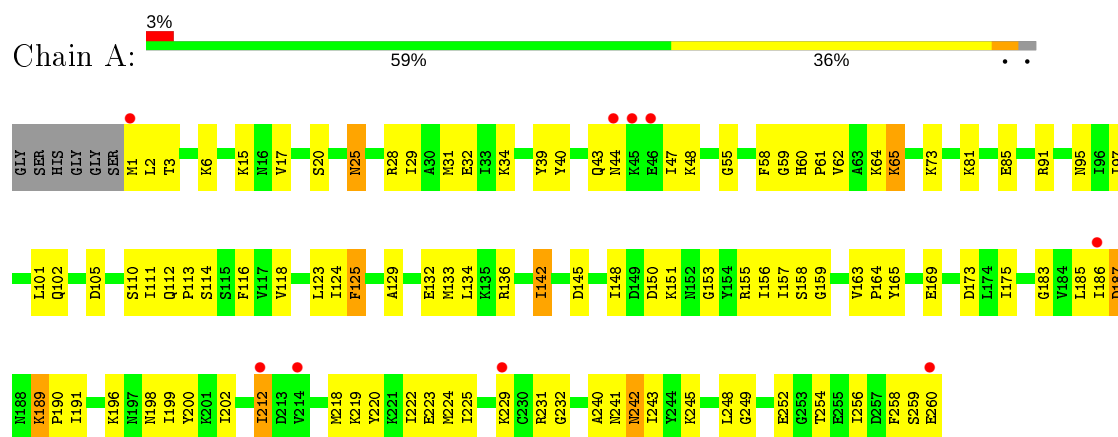
- Molecule 4 is water.

Mol	Chain	Residues	Atoms		ZeroOcc	AltConf
4	A	60	Total	O	0	0
			60	60		
4	B	36	Total	O	0	0
			36	36		

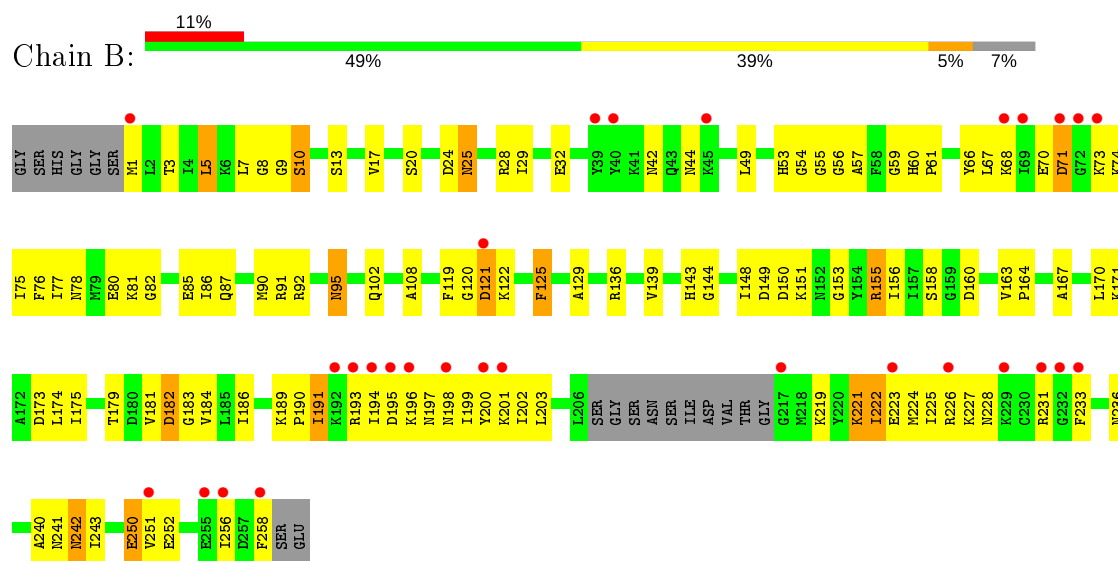
3 Residue-property plots [i](#)

These plots are drawn for all protein, RNA and DNA chains in the entry. The first graphic for a chain summarises the proportions of the various outlier classes displayed in the second graphic. The second graphic shows the sequence view annotated by issues in geometry and electron density. Residues are color-coded according to the number of geometric quality criteria for which they contain at least one outlier: green = 0, yellow = 1, orange = 2 and red = 3 or more. A red dot above a residue indicates a poor fit to the electron density ($RSRZ > 2$). Stretches of 2 or more consecutive residues without any outlier are shown as a green connector. Residues present in the sample, but not in the model, are shown in grey.

- Molecule 1: isopentenyl phosphate kinase



- Molecule 1: isopentenyl phosphate kinase



4 Data and refinement statistics

Property	Value	Source
Space group	P 2 ₁ 2 ₁ 2	Depositor
Cell constants a, b, c, α , β , γ	78.09Å 99.23Å 87.41Å 90.00° 90.00° 90.00°	Depositor
Resolution (Å)	43.71 – 2.54 43.70 – 2.54	Depositor EDS
% Data completeness (in resolution range)	99.0 (43.71-2.54) 99.0 (43.70-2.54)	Depositor EDS
R_{merge}	0.08	Depositor
R_{sym}	(Not available)	Depositor
$\langle I/\sigma(I) \rangle$ ¹	3.32 (at 2.54Å)	Xtriage
Refinement program	REFMAC	Depositor
R, R_{free}	0.224 , 0.287 0.229 , 0.230	Depositor DCC
R_{free} test set	1167 reflections (5.14%)	wwPDB-VP
Wilson B-factor (Å ²)	41.3	Xtriage
Anisotropy	0.405	Xtriage
Bulk solvent k_{sol} (e/Å ³), B_{sol} (Å ²)	0.35 , 50.3	EDS
L-test for twinning ²	$\langle L \rangle = 0.49$, $\langle L^2 \rangle = 0.32$	Xtriage
Estimated twinning fraction	No twinning to report.	Xtriage
F_o, F_c correlation	0.93	EDS
Total number of atoms	4246	wwPDB-VP
Average B, all atoms (Å ²)	42.0	wwPDB-VP

Xtriage's analysis on translational NCS is as follows: *The largest off-origin peak in the Patterson function is 4.09% of the height of the origin peak. No significant pseudotranslation is detected.*

¹Intensities estimated from amplitudes.

²Theoretical values of $\langle |L| \rangle$, $\langle L^2 \rangle$ for acentric reflections are 0.5, 0.333 respectively for untwinned datasets, and 0.375, 0.2 for perfectly twinned datasets.

5 Model quality

5.1 Standard geometry

Bond lengths and bond angles in the following residue types are not validated in this section: SO4, IPE

The Z score for a bond length (or angle) is the number of standard deviations the observed value is removed from the expected value. A bond length (or angle) with $|Z| > 5$ is considered an outlier worth inspection. RMSZ is the root-mean-square of all Z scores of the bond lengths (or angles).

Mol	Chain	Bond lengths		Bond angles	
		RMSZ	$\# Z > 5$	RMSZ	$\# Z > 5$
1	A	0.31	0/2112	0.46	0/2840
1	B	0.29	0/2031	0.43	0/2730
All	All	0.30	0/4143	0.44	0/5570

There are no bond length outliers.

There are no bond angle outliers.

There are no chirality outliers.

There are no planarity outliers.

5.2 Too-close contacts

In the following table, the Non-H and H(model) columns list the number of non-hydrogen atoms and hydrogen atoms in the chain respectively. The H(added) column lists the number of hydrogen atoms added and optimized by MolProbity. The Clashes column lists the number of clashes within the asymmetric unit, whereas Symm-Clashes lists symmetry related clashes.

Mol	Chain	Non-H	H(model)	H(added)	Clashes	Symm-Clashes
1	A	2077	0	2144	142	0
1	B	1997	0	2074	174	0
2	A	28	0	18	29	0
2	B	28	0	18	14	0
3	A	10	0	0	1	0
3	B	10	0	0	8	0
4	A	60	0	0	10	1
4	B	36	0	0	9	0
All	All	4246	0	4254	302	1

The all-atom clashscore is defined as the number of clashes found per 1000 atoms (including hydrogen atoms). The all-atom clashscore for this structure is 36.

The worst 5 of 302 close contacts within the same asymmetric unit are listed below, sorted by their clash magnitude.

Atom-1	Atom-2	Interatomic distance (Å)	Clash overlap (Å)
1:B:119:PHE:CE2	1:B:155:ARG:NH2	1.94	1.35
1:B:233:PHE:CZ	1:B:251:VAL:HG12	1.65	1.29
1:A:59:GLY:C	2:A:300[B]:IPE:H51	1.56	1.25
1:B:24:ASP:HB2	3:B:263:SO4:O2	1.31	1.23
1:A:231:ARG:HD3	4:A:306:HOH:O	1.07	1.22

All (1) symmetry-related close contacts are listed below. The label for Atom-2 includes the symmetry operator and encoded unit-cell translations to be applied.

Atom-1	Atom-2	Interatomic distance (Å)	Clash overlap (Å)
4:A:314:HOH:O	4:A:314:HOH:O[2_655]	2.05	0.15

5.3 Torsion angles [i](#)

5.3.1 Protein backbone [i](#)

In the following table, the Percentiles column shows the percent Ramachandran outliers of the chain as a percentile score with respect to all X-ray entries followed by that with respect to entries of similar resolution.

The Analysed column shows the number of residues for which the backbone conformation was analysed, and the total number of residues.

Mol	Chain	Analysed	Favoured	Allowed	Outliers	Percentiles	
1	A	258/266 (97%)	239 (93%)	17 (7%)	2 (1%)	19	27
1	B	244/266 (92%)	212 (87%)	24 (10%)	8 (3%)	4	2
All	All	502/532 (94%)	451 (90%)	41 (8%)	10 (2%)	7	8

5 of 10 Ramachandran outliers are listed below:

Mol	Chain	Res	Type
1	B	221	LYS
1	B	222	ILE
1	A	187	ASP
1	B	9	GLY
1	B	10	SER

5.3.2 Protein sidechains ⓘ

In the following table, the Percentiles column shows the percent sidechain outliers of the chain as a percentile score with respect to all X-ray entries followed by that with respect to entries of similar resolution.

The Analysed column shows the number of residues for which the sidechain conformation was analysed, and the total number of residues.

Mol	Chain	Analysed	Rotameric	Outliers	Percentiles	
1	A	228 / 231 (99%)	219 (96%)	9 (4%)	32	44
1	B	218 / 231 (94%)	209 (96%)	9 (4%)	30	41
All	All	446 / 462 (96%)	428 (96%)	18 (4%)	31	43

5 of 18 residues with a non-rotameric sidechain are listed below:

Mol	Chain	Res	Type
1	A	242	ASN
1	B	5	LEU
1	B	155	ARG
1	A	189	LYS
1	A	212	ILE

Some sidechains can be flipped to improve hydrogen bonding and reduce clashes. 5 of 17 such sidechains are listed below:

Mol	Chain	Res	Type
1	A	241	ASN
1	A	242	ASN
1	B	102	GLN
1	A	238	ASN
1	B	137	ASN

5.3.3 RNA ⓘ

There are no RNA molecules in this entry.

5.4 Non-standard residues in protein, DNA, RNA chains ⓘ

There are no non-standard protein/DNA/RNA residues in this entry.

5.5 Carbohydrates [i](#)

There are no carbohydrates in this entry.

5.6 Ligand geometry [i](#)

8 ligands are modelled in this entry.

In the following table, the Counts columns list the number of bonds (or angles) for which Mogul statistics could be retrieved, the number of bonds (or angles) that are observed in the model and the number of bonds (or angles) that are defined in the Chemical Component Dictionary. The Link column lists molecule types, if any, to which the group is linked. The Z score for a bond length (or angle) is the number of standard deviations the observed value is removed from the expected value. A bond length (or angle) with $|Z| > 2$ is considered an outlier worth inspection. RMSZ is the root-mean-square of all Z scores of the bond lengths (or angles).

Mol	Type	Chain	Res	Link	Bond lengths			Bond angles		
					Counts	RMSZ	$\# Z > 2$	Counts	RMSZ	$\# Z > 2$
3	SO4	A	263	-	4,4,4	0.15	0	6,6,6	0.17	0
3	SO4	B	263	-	4,4,4	0.14	0	6,6,6	0.07	0
2	IPE	B	300[A]	-	11,13,13	0.96	0	15,19,19	1.16	1 (6%)
2	IPE	A	300[B]	-	11,13,13	0.97	0	15,19,19	1.25	1 (6%)
2	IPE	B	300[B]	-	11,13,13	1.02	0	15,19,19	1.14	1 (6%)
3	SO4	A	262	-	4,4,4	0.13	0	6,6,6	0.15	0
3	SO4	B	262	-	4,4,4	0.13	0	6,6,6	0.06	0
2	IPE	A	300[A]	-	11,13,13	0.92	0	15,19,19	1.24	1 (6%)

In the following table, the Chirals column lists the number of chiral outliers, the number of chiral centers analysed, the number of these observed in the model and the number defined in the Chemical Component Dictionary. Similar counts are reported in the Torsion and Rings columns. '-' means no outliers of that kind were identified.

Mol	Type	Chain	Res	Link	Chirals	Torsions	Rings
2	IPE	B	300[A]	-	-	6/13/13/13	-
2	IPE	B	300[B]	-	-	5/13/13/13	-
2	IPE	A	300[A]	-	-	2/13/13/13	-
2	IPE	A	300[B]	-	-	6/13/13/13	-

There are no bond length outliers.

All (4) bond angle outliers are listed below:

Mol	Chain	Res	Type	Atoms	Z	Observed($^{\circ}$)	Ideal($^{\circ}$)
2	A	300[B]	IPE	PA-O3A-PB	-3.74	120.00	132.83
2	A	300[A]	IPE	PA-O3A-PB	-3.58	120.56	132.83
2	B	300[A]	IPE	PA-O3A-PB	-3.26	121.62	132.83
2	B	300[B]	IPE	PA-O3A-PB	-3.25	121.68	132.83

There are no chirality outliers.

5 of 19 torsion outliers are listed below:

Mol	Chain	Res	Type	Atoms
2	B	300[A]	IPE	C1-O1-PA-O3A
2	B	300[A]	IPE	C1-C2-C3-C5
2	B	300[A]	IPE	PB-O3A-PA-O1
2	A	300[B]	IPE	C1-O1-PA-O1A
2	A	300[B]	IPE	C1-O1-PA-O2A

There are no ring outliers.

6 monomers are involved in 52 short contacts:

Mol	Chain	Res	Type	Clashes	Symm-Clashes
3	B	263	SO4	8	0
2	B	300[A]	IPE	10	0
2	A	300[B]	IPE	23	0
2	B	300[B]	IPE	4	0
3	A	262	SO4	1	0
2	A	300[A]	IPE	6	0

5.7 Other polymers [i](#)

There are no such residues in this entry.

5.8 Polymer linkage issues [i](#)

There are no chain breaks in this entry.

6 Fit of model and data [i](#)

6.1 Protein, DNA and RNA chains [i](#)

In the following table, the column labelled ‘#RSRZ> 2’ contains the number (and percentage) of RSRZ outliers, followed by percent RSRZ outliers for the chain as percentile scores relative to all X-ray entries and entries of similar resolution. The OWAB column contains the minimum, median, 95th percentile and maximum values of the occupancy-weighted average B-factor per residue. The column labelled ‘Q< 0.9’ lists the number of (and percentage) of residues with an average occupancy less than 0.9.

Mol	Chain	Analysed	<RSRZ>	#RSRZ>2	OWAB(Å ²)	Q<0.9
1	A	260/266 (97%)	0.18	9 (3%) 44 51	18, 36, 50, 54	0
1	B	248/266 (93%)	0.67	29 (11%) 4 6	22, 47, 72, 76	0
All	All	508/532 (95%)	0.42	38 (7%) 14 17	18, 40, 67, 76	0

The worst 5 of 38 RSRZ outliers are listed below:

Mol	Chain	Res	Type	RSRZ
1	B	251	VAL	5.4
1	B	72	GLY	5.0
1	A	260	GLU	4.8
1	B	231	ARG	4.3
1	A	1	MET	4.2

6.2 Non-standard residues in protein, DNA, RNA chains [i](#)

There are no non-standard protein/DNA/RNA residues in this entry.

6.3 Carbohydrates [i](#)

There are no carbohydrates in this entry.

6.4 Ligands [i](#)

In the following table, the Atoms column lists the number of modelled atoms in the group and the number defined in the chemical component dictionary. The B-factors column lists the minimum, median, 95th percentile and maximum values of B factors of atoms in the group. The column labelled ‘Q< 0.9’ lists the number of atoms with occupancy less than 0.9.

Mol	Type	Chain	Res	Atoms	RSCC	RSR	B-factors(\AA^2)	Q<0.9
3	SO4	B	263	5/5	0.68	0.27	104,104,104,104	0
3	SO4	B	262	5/5	0.91	0.14	97,97,97,97	0
2	IPE	A	300[B]	14/14	0.92	0.19	47,48,48,48	14
2	IPE	B	300[B]	14/14	0.92	0.21	53,54,54,54	14
2	IPE	A	300[A]	14/14	0.92	0.19	24,25,26,26	14
2	IPE	B	300[A]	14/14	0.92	0.21	31,33,34,35	14
3	SO4	A	263	5/5	0.96	0.15	40,40,41,42	0
3	SO4	A	262	5/5	0.96	0.12	70,70,70,70	0

6.5 Other polymers [i](#)

There are no such residues in this entry.