



Full wwPDB X-ray Structure Validation Report ⓘ

Jan 7, 2021 – 10:04 AM EST

PDB ID : 7K41
Title : Bacterial O-GlcNAcase (OGA) with compound
Authors : Lane, W.; Tjhen, R.; Snell, G.; Sang, B.
Deposited on : 2020-09-14
Resolution : 2.00 Å(reported)

This is a Full wwPDB X-ray Structure Validation Report for a publicly released PDB entry.

We welcome your comments at validation@mail.wwpdb.org

A user guide is available at

<https://www.wwpdb.org/validation/2017/XrayValidationReportHelp>

with specific help available everywhere you see the ⓘ symbol.

The following versions of software and data (see [references ⓘ](#)) were used in the production of this report:

MolProbity : 4.02b-467
Mogul : 1.8.5 (274361), CSD as541be (2020)
Xtriage (Phenix) : 1.13
EDS : 2.16
buster-report : 1.1.7 (2018)
Percentile statistics : 20191225.v01 (using entries in the PDB archive December 25th 2019)
Refmac : 5.8.0158
CCP4 : 7.0.044 (Gargrove)
Ideal geometry (proteins) : Engh & Huber (2001)
Ideal geometry (DNA, RNA) : Parkinson et al. (1996)
Validation Pipeline (wwPDB-VP) : 2.16

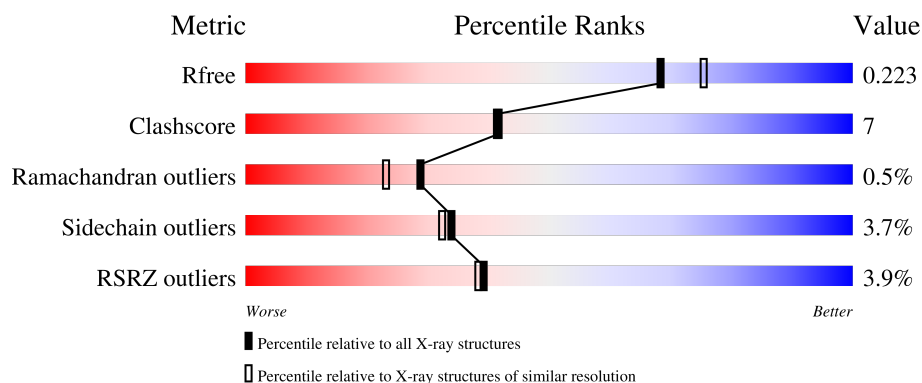
1 Overall quality at a glance

The following experimental techniques were used to determine the structure:

X-RAY DIFFRACTION


The reported resolution of this entry is 2.00 Å.

Percentile scores (ranging between 0-100) for global validation metrics of the entry are shown in the following graphic. The table shows the number of entries on which the scores are based.



Metric	Whole archive (#Entries)	Similar resolution (#Entries, resolution range(Å))
R_{free}	130704	8085 (2.00-2.00)
Clashscore	141614	9178 (2.00-2.00)
Ramachandran outliers	138981	9054 (2.00-2.00)
Sidechain outliers	138945	9053 (2.00-2.00)
RSRZ outliers	127900	7900 (2.00-2.00)

The table below summarises the geometric issues observed across the polymeric chains and their fit to the electron density. The red, orange, yellow and green segments of the lower bar indicate the fraction of residues that contain outliers for ≥ 3 , 2, 1 and 0 types of geometric quality criteria respectively. A grey segment represents the fraction of residues that are not modelled. The numeric value for each fraction is indicated below the corresponding segment, with a dot representing fractions $\leq 5\%$. The upper red bar (where present) indicates the fraction of residues that have poor fit to the electron density. The numeric value is given above the bar.

Mol	Chain	Length	Quality of chain
1	A	719	

The following table lists non-polymeric compounds, carbohydrate monomers and non-standard residues in protein, DNA, RNA chains that are outliers for geometric or electron-density-fit criteria:

Mol	Type	Chain	Res	Chirality	Geometry	Clashes	Electron density
2	ACT	A	2612	-	-	X	-

2 Entry composition [i](#)

There are 5 unique types of molecules in this entry. The entry contains 4991 atoms, of which 0 are hydrogens and 0 are deuteriums.

In the tables below, the ZeroOcc column contains the number of atoms modelled with zero occupancy, the AltConf column contains the number of residues with at least one atom in alternate conformation and the Trace column contains the number of residues modelled with at most 2 atoms.

- Molecule 1 is a protein called O-GlcNAcase BT_4395.

Mol	Chain	Residues	Atoms					ZeroOcc	AltConf	Trace
			Total	C	N	O	S			
1	A	590	4767	3045	801	903	18	0	2	0

There are 3 discrepancies between the modelled and reference sequences:

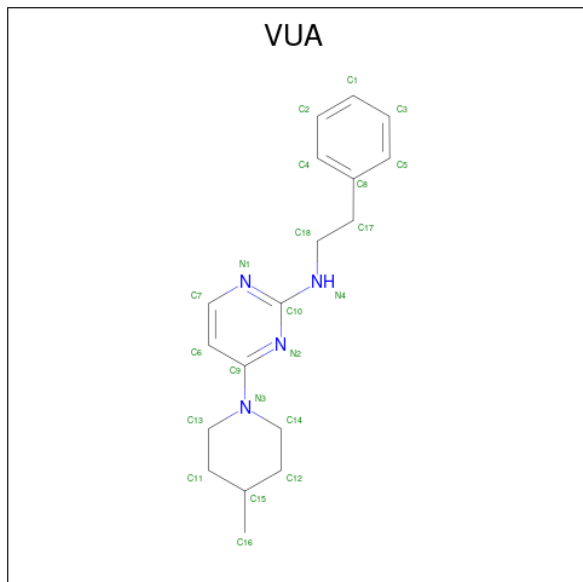
Chain	Residue	Modelled	Actual	Comment	Reference
A	-2	GLY	-	expression tag	UNP Q89ZI2
A	-1	GLY	-	expression tag	UNP Q89ZI2
A	0	SER	-	expression tag	UNP Q89ZI2

- Molecule 2 is ACETATE ION (three-letter code: ACT) (formula: $C_2H_3O_2$).



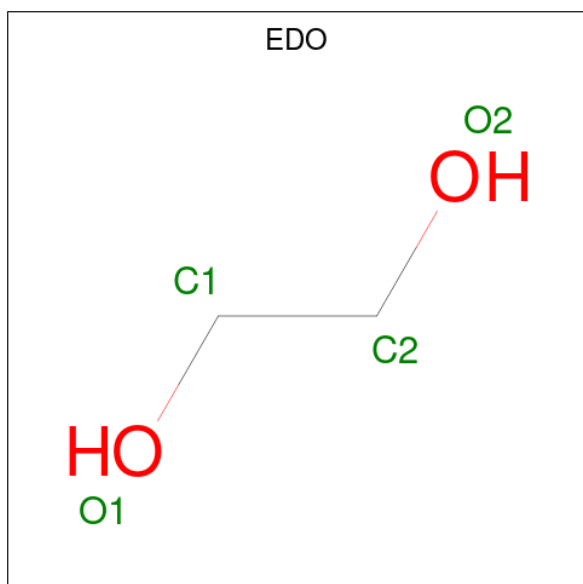
Mol	Chain	Residues	Atoms			ZeroOcc	AltConf
2	A	1	Total	C	O	0	0
			4	2	2		
2	A	1	Total	C	O	0	0
			4	2	2		

- Molecule 3 is 4-(4-methylpiperidin-1-yl)-N-(2-phenylethyl)pyrimidin-2-amine (three-letter code: VUA) (formula: $C_{18}H_{24}N_4$) (labeled as "Ligand of Interest" by depositor).



Mol	Chain	Residues	Atoms			ZeroOcc	AltConf
3	A	1	Total	C	N	0	0
			22	18	4		

- Molecule 4 is 1,2-ETHANEDIOL (three-letter code: EDO) (formula: $C_2H_6O_2$).



Mol	Chain	Residues	Atoms			ZeroOcc	AltConf
4	A	1	Total	C	O	0	0
			4	2	2		

Continued on next page...

Continued from previous page...

Mol	Chain	Residues	Atoms			ZeroOcc	AltConf
4	A	1	Total	C	O	0	0
			4	2	2		
4	A	1	Total	C	O	0	0
			4	2	2		
4	A	1	Total	C	O	0	0
			4	2	2		
4	A	1	Total	C	O	0	0
			4	2	2		
4	A	1	Total	C	O	0	0
			4	2	2		
4	A	1	Total	C	O	0	0
			4	2	2		
4	A	1	Total	C	O	0	0
			4	2	2		
4	A	1	Total	C	O	0	0
			4	2	2		

- Molecule 5 is water.

Mol	Chain	Residues	Atoms		ZeroOcc	AltConf
5	A	154	Total	O	0	0
			154	154		

- Molecule 1: O-GlcNAcase BT 4395



4 Data and refinement statistics

Property	Value	Source
Space group	C 1 2 1	Depositor
Cell constants a, b, c, α , β , γ	188.77Å 52.65Å 84.46Å 90.00° 99.69° 90.00°	Depositor
Resolution (Å)	41.63 – 2.00 41.63 – 1.99	Depositor EDS
% Data completeness (in resolution range)	93.4 (41.63-2.00) 93.4 (41.63-1.99)	Depositor EDS
R_{merge}	0.05	Depositor
R_{sym}	(Not available)	Depositor
$\langle I/\sigma(I) \rangle$ ¹	1.87 (at 2.00Å)	Xtriage
Refinement program	REFMAC 5.8.0258	Depositor
R, R_{free}	0.186 , 0.218 0.191 , 0.223	Depositor DCC
R_{free} test set	2673 reflections (5.08%)	wwPDB-VP
Wilson B-factor (Å ²)	36.6	Xtriage
Anisotropy	0.264	Xtriage
Bulk solvent k_{sol} (e/Å ³), B_{sol} (Å ²)	0.36 , 46.5	EDS
L-test for twinning ²	$\langle L \rangle = 0.50$, $\langle L^2 \rangle = 0.33$	Xtriage
Estimated twinning fraction	No twinning to report.	Xtriage
F_o, F_c correlation	0.96	EDS
Total number of atoms	4991	wwPDB-VP
Average B, all atoms (Å ²)	50.0	wwPDB-VP

Xtriage's analysis on translational NCS is as follows: *The largest off-origin peak in the Patterson function is 4.76% of the height of the origin peak. No significant pseudotranslation is detected.*

¹Intensities estimated from amplitudes.

²Theoretical values of $\langle |L| \rangle$, $\langle L^2 \rangle$ for acentric reflections are 0.5, 0.333 respectively for untwinned datasets, and 0.375, 0.2 for perfectly twinned datasets.

5 Model quality

5.1 Standard geometry

Bond lengths and bond angles in the following residue types are not validated in this section: VUA, EDO, ACT

The Z score for a bond length (or angle) is the number of standard deviations the observed value is removed from the expected value. A bond length (or angle) with $|Z| > 5$ is considered an outlier worth inspection. RMSZ is the root-mean-square of all Z scores of the bond lengths (or angles).

Mol	Chain	Bond lengths		Bond angles	
		RMSZ	$\# Z > 5$	RMSZ	$\# Z > 5$
1	A	0.39	1/4897 (0.0%)	0.69	3/6646 (0.0%)

Chiral center outliers are detected by calculating the chiral volume of a chiral center and verifying if the center is modelled as a planar moiety or with the opposite hand. A planarity outlier is detected by checking planarity of atoms in a peptide group, atoms in a mainchain group or atoms of a sidechain that are expected to be planar.

Mol	Chain	#Chirality outliers	#Planarity outliers
1	A	0	1

All (1) bond length outliers are listed below:

Mol	Chain	Res	Type	Atoms	Z	Observed(Å)	Ideal(Å)
1	A	229	MET	CG-SD	5.92	1.96	1.81

All (3) bond angle outliers are listed below:

Mol	Chain	Res	Type	Atoms	Z	Observed(°)	Ideal(°)
1	A	146	ARG	NE-CZ-NH2	-6.85	116.88	120.30
1	A	146	ARG	CG-CD-NE	-6.39	98.37	111.80
1	A	474	ARG	CG-CD-NE	-5.91	99.40	111.80

There are no chirality outliers.

All (1) planarity outliers are listed below:

Mol	Chain	Res	Type	Group
1	A	292	ASN	Peptide

5.2 Too-close contacts ⓘ

In the following table, the Non-H and H(model) columns list the number of non-hydrogen atoms and hydrogen atoms in the chain respectively. The H(added) column lists the number of hydrogen atoms added and optimized by MolProbity. The Clashes column lists the number of clashes within the asymmetric unit, whereas Symm-Clashes lists symmetry-related clashes.

Mol	Chain	Non-H	H(model)	H(added)	Clashes	Symm-Clashes
1	A	4767	0	4615	67	0
2	A	8	0	6	2	0
3	A	22	0	0	0	0
4	A	40	0	60	2	0
5	A	154	0	0	0	0
All	All	4991	0	4681	67	0

The all-atom clashscore is defined as the number of clashes found per 1000 atoms (including hydrogen atoms). The all-atom clashscore for this structure is 7.

All (67) close contacts within the same asymmetric unit are listed below, sorted by their clash magnitude.

Atom-1	Atom-2	Interatomic distance (Å)	Clash overlap (Å)
1:A:318:ILE:HD11	1:A:323:ILE:HD13	1.39	1.01
1:A:219:ARG:HH11	1:A:219:ARG:HG2	1.29	0.98
1:A:355:VAL:O	1:A:399:THR:HG23	1.79	0.83
1:A:250:ASN:HD22	1:A:251:PRO:HD2	1.53	0.71
1:A:354:PRO:HB2	1:A:399:THR:HG22	1.72	0.71
1:A:223:LEU:HD12	1:A:260:TYR:HE2	1.57	0.70
1:A:219:ARG:HH11	1:A:219:ARG:CG	2.03	0.69
1:A:178:LEU:O	1:A:225:LYS:NZ	2.24	0.63
1:A:210:GLN:O	1:A:211:ASP:HB2	1.99	0.62
1:A:543:GLN:NE2	1:A:543:GLN:HA	2.14	0.62
1:A:247:GLU:HA	1:A:247:GLU:OE1	2.01	0.60
1:A:281:GLU:OE1	1:A:287:SER:HB2	2.01	0.60
1:A:146:ARG:NH2	1:A:165:PRO:HB3	2.18	0.58
1:A:543:GLN:HE21	1:A:543:GLN:HA	1.70	0.57
1:A:25:TYR:CE1	1:A:49:GLN:HG2	2.40	0.57
1:A:177:ARG:HH12	1:A:211:ASP:C	2.08	0.56
1:A:171:HIS:HD2	1:A:207:HIS:CD2	2.23	0.56
1:A:209:GLY:HA3	1:A:243:ASP:HB3	1.87	0.56
1:A:199:GLU:HA	2:A:2612:ACT:H2	1.89	0.55
1:A:287:SER:O	1:A:289:PRO:HD3	2.07	0.54
1:A:539:PHE:O	1:A:543:GLN:HG2	2.07	0.54
1:A:250:ASN:HD22	1:A:251:PRO:CD	2.20	0.54

Continued on next page...

Continued from previous page...

Atom-1	Atom-2	Interatomic distance (Å)	Clash overlap (Å)
1:A:539:PHE:HZ	1:A:589:ASP:HA	1.71	0.54
1:A:199:GLU:HA	2:A:2612:ACT:CH3	2.39	0.53
1:A:356:TYR:HB3	1:A:399:THR:HG21	1.92	0.52
1:A:244:ILE:HG12	1:A:248:GLY:HA3	1.93	0.51
1:A:423:MET:HE2	1:A:441:MET:H	1.75	0.51
1:A:354:PRO:HB2	1:A:399:THR:CG2	2.39	0.50
1:A:356:TYR:HB2	4:A:2607:EDO:H11	1.94	0.50
1:A:214:TRP:CZ2	1:A:253:LYS:HB3	2.47	0.50
1:A:171:HIS:HD2	1:A:207:HIS:HD2	1.59	0.50
1:A:86:ASN:HA	1:A:118:GLU:HG2	1.94	0.50
1:A:83:LEU:HD23	1:A:83:LEU:C	2.32	0.50
1:A:318:ILE:CD1	1:A:323:ILE:HD13	2.26	0.50
1:A:171:HIS:CD2	1:A:207:HIS:CD2	3.01	0.49
1:A:486:THR:HB	1:A:489:LYS:HE2	1.94	0.49
1:A:238:ALA:HA	1:A:276:VAL:O	2.13	0.48
1:A:539:PHE:CZ	1:A:589:ASP:HA	2.49	0.48
1:A:147:LEU:HD22	1:A:194:VAL:HG21	1.95	0.47
1:A:333:PRO:HB2	1:A:367:SER:OG	2.14	0.47
1:A:266:ALA:HA	1:A:272:ILE:CD1	2.46	0.46
1:A:266:ALA:HA	1:A:272:ILE:HD13	1.97	0.46
1:A:217:GLU:O	1:A:221:LEU:HD13	2.16	0.46
1:A:241:PHE:HE2	1:A:258:LEU:HD11	1.82	0.45
1:A:452:LYS:O	1:A:456:GLU:HG3	2.17	0.44
1:A:219:ARG:NH1	1:A:219:ARG:HG2	2.10	0.44
1:A:543:GLN:HE21	1:A:543:GLN:CA	2.29	0.44
1:A:451:LEU:HG	1:A:564:LEU:HD12	1.99	0.44
1:A:165:PRO:O	1:A:171:HIS:HE1	2.01	0.44
1:A:423:MET:CE	1:A:441:MET:H	2.31	0.44
1:A:171:HIS:CD2	1:A:207:HIS:HD2	2.36	0.43
1:A:318:ILE:CD1	1:A:336:ILE:HG13	2.48	0.43
1:A:539:PHE:HE2	1:A:590:TYR:N	2.16	0.43
1:A:223:LEU:HD12	1:A:260:TYR:CE2	2.46	0.43
1:A:456:GLU:H	1:A:456:GLU:HG3	1.61	0.43
1:A:81:TYR:CE1	1:A:123:ASP:HB3	2.53	0.43
1:A:557:ALA:HB1	1:A:561:ILE:HB	2.00	0.43
1:A:283:ASN:HB3	1:A:310:THR:OG1	2.19	0.42
1:A:423:MET:HE2	1:A:441:MET:N	2.33	0.42
1:A:543:GLN:CA	1:A:543:GLN:NE2	2.81	0.42
1:A:81:TYR:CZ	1:A:123:ASP:HB3	2.55	0.42
1:A:79:GLU:OE2	1:A:98:ARG:HD2	2.20	0.42
1:A:317:ASP:OD2	4:A:2608:EDO:O2	2.38	0.42

Continued on next page...

Continued from previous page...

Atom-1	Atom-2	Interatomic distance (Å)	Clash overlap (Å)
1:A:223:LEU:HD21	1:A:265:PHE:HB2	2.03	0.41
1:A:318:ILE:HD12	1:A:336:ILE:CD1	2.50	0.41
1:A:269:LYS:HB2	1:A:272:ILE:HD12	2.03	0.41
1:A:455:LYS:HE2	1:A:455:LYS:C	2.41	0.40

There are no symmetry-related clashes.

5.3 Torsion angles [i](#)

5.3.1 Protein backbone [i](#)

In the following table, the Percentiles column shows the percent Ramachandran outliers of the chain as a percentile score with respect to all X-ray entries followed by that with respect to entries of similar resolution.

The Analysed column shows the number of residues for which the backbone conformation was analysed, and the total number of residues.

Mol	Chain	Analysed	Favoured	Allowed	Outliers	Percentiles	
1	A	588/719 (82%)	568 (97%)	17 (3%)	3 (0%)	29	23

All (3) Ramachandran outliers are listed below:

Mol	Chain	Res	Type
1	A	518	GLY
1	A	455	LYS
1	A	164	GLY

5.3.2 Protein sidechains [i](#)

In the following table, the Percentiles column shows the percent sidechain outliers of the chain as a percentile score with respect to all X-ray entries followed by that with respect to entries of similar resolution.

The Analysed column shows the number of residues for which the sidechain conformation was analysed, and the total number of residues.

Mol	Chain	Analysed	Rotameric	Outliers	Percentiles	
1	A	512/631 (81%)	493 (96%)	19 (4%)	34	32

All (19) residues with a non-rotameric sidechain are listed below:

Mol	Chain	Res	Type
1	A	46	SER
1	A	78	LYS
1	A	87	GLU
1	A	112	LYS
1	A	166	LYS
1	A	183	LYS
1	A	189	GLN
1	A	214	TRP
1	A	219	ARG
1	A	223	LEU
1	A	250	ASN
1	A	324	SER
1	A	337	TRP
1	A	371	THR
1	A	455	LYS
1	A	456	GLU
1	A	462	LYS
1	A	543	GLN
1	A	564	LEU

Sometimes sidechains can be flipped to improve hydrogen bonding and reduce clashes. All (11) such sidechains are listed below:

Mol	Chain	Res	Type
1	A	156	ASN
1	A	171	HIS
1	A	189	GLN
1	A	207	HIS
1	A	250	ASN
1	A	252	GLN
1	A	349	HIS
1	A	459	ASN
1	A	529	ASN
1	A	543	GLN
1	A	581	ASN

5.3.3 RNA ⓘ

There are no RNA molecules in this entry.

5.4 Non-standard residues in protein, DNA, RNA chains [i](#)

There are no non-standard protein/DNA/RNA residues in this entry.

5.5 Carbohydrates [i](#)

There are no monosaccharides in this entry.

5.6 Ligand geometry [i](#)

13 ligands are modelled in this entry.

In the following table, the Counts columns list the number of bonds (or angles) for which Mogul statistics could be retrieved, the number of bonds (or angles) that are observed in the model and the number of bonds (or angles) that are defined in the Chemical Component Dictionary. The Link column lists molecule types, if any, to which the group is linked. The Z score for a bond length (or angle) is the number of standard deviations the observed value is removed from the expected value. A bond length (or angle) with $|Z| > 2$ is considered an outlier worth inspection. RMSZ is the root-mean-square of all Z scores of the bond lengths (or angles).

Mol	Type	Chain	Res	Link	Bond lengths			Bond angles		
					Counts	RMSZ	# Z > 2	Counts	RMSZ	# Z > 2
4	EDO	A	2613	-	3,3,3	0.15	0	2,2,2	0.37	0
4	EDO	A	2607	-	3,3,3	0.23	0	2,2,2	0.33	0
4	EDO	A	2604	-	3,3,3	0.09	0	2,2,2	0.32	0
4	EDO	A	2605	-	3,3,3	0.16	0	2,2,2	0.15	0
3	VUA	A	2602	-	24,24,24	0.93	1 (4%)	30,31,31	1.90	8 (26%)
4	EDO	A	2609	-	3,3,3	0.09	0	2,2,2	0.01	0
4	EDO	A	2611	-	3,3,3	0.10	0	2,2,2	0.23	0
2	ACT	A	2601	-	1,3,3	4.47	1 (100%)	0,3,3	0.00	-
4	EDO	A	2608	-	3,3,3	0.11	0	2,2,2	0.19	0
4	EDO	A	2606	-	3,3,3	0.15	0	2,2,2	0.22	0
4	EDO	A	2610	-	3,3,3	0.18	0	2,2,2	0.72	0
4	EDO	A	2603	-	3,3,3	0.08	0	2,2,2	0.02	0
2	ACT	A	2612	-	1,3,3	2.98	1 (100%)	0,3,3	0.00	-

In the following table, the Chirals column lists the number of chiral outliers, the number of chiral centers analysed, the number of these observed in the model and the number defined in the Chemical Component Dictionary. Similar counts are reported in the Torsion and Rings columns. '-' means no outliers of that kind were identified.

Mol	Type	Chain	Res	Link	Chirals	Torsions	Rings
4	EDO	A	2613	-	-	0/1/1/1	-

Continued on next page...

Continued from previous page...

Mol	Type	Chain	Res	Link	Chirals	Torsions	Rings
4	EDO	A	2604	-	-	1/1/1/1	-
4	EDO	A	2605	-	-	1/1/1/1	-
3	VUA	A	2602	-	-	0/10/20/20	0/3/3/3
4	EDO	A	2609	-	-	1/1/1/1	-
4	EDO	A	2611	-	-	1/1/1/1	-
4	EDO	A	2608	-	-	0/1/1/1	-
4	EDO	A	2606	-	-	1/1/1/1	-
4	EDO	A	2610	-	-	0/1/1/1	-
4	EDO	A	2603	-	-	1/1/1/1	-
4	EDO	A	2607	-	-	1/1/1/1	-

All (3) bond length outliers are listed below:

Mol	Chain	Res	Type	Atoms	Z	Observed(Å)	Ideal(Å)
2	A	2601	ACT	CH3-C	4.47	1.54	1.48
3	A	2602	VUA	C10-N4	3.69	1.40	1.34
2	A	2612	ACT	CH3-C	2.98	1.52	1.48

All (8) bond angle outliers are listed below:

Mol	Chain	Res	Type	Atoms	Z	Observed(°)	Ideal(°)
3	A	2602	VUA	C18-N4-C10	-4.68	115.67	123.75
3	A	2602	VUA	N1-C10-N2	-3.86	122.89	126.55
3	A	2602	VUA	C7-N1-C10	3.78	118.81	115.45
3	A	2602	VUA	C17-C18-N4	-3.33	106.18	111.75
3	A	2602	VUA	N4-C10-N2	2.86	122.14	117.19
3	A	2602	VUA	C14-C12-C15	-2.45	107.62	112.32
3	A	2602	VUA	C12-C14-N3	-2.38	106.19	111.10
3	A	2602	VUA	C16-C15-C12	-2.05	107.62	112.09

There are no chirality outliers.

All (7) torsion outliers are listed below:

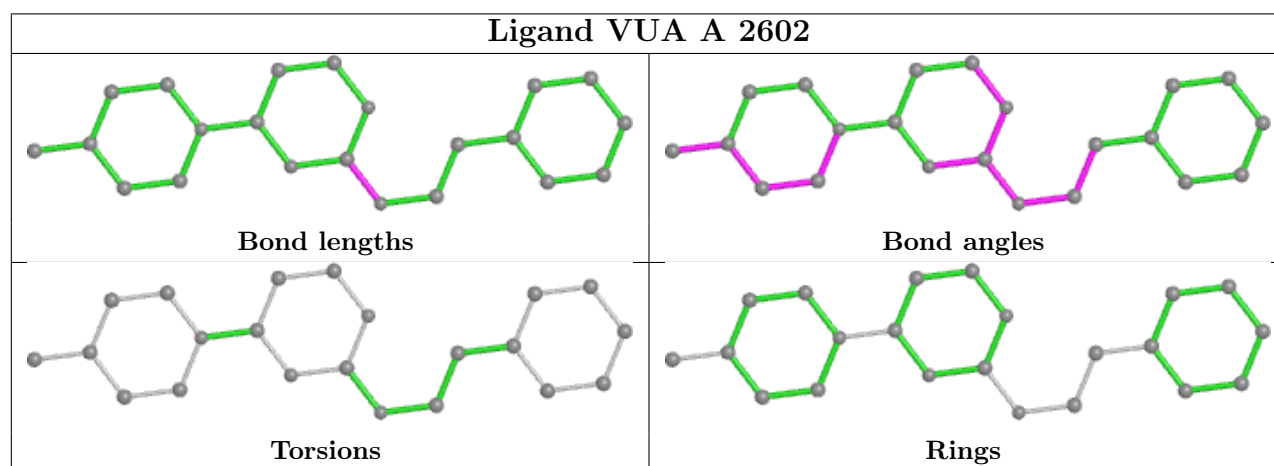
Mol	Chain	Res	Type	Atoms
4	A	2605	EDO	O1-C1-C2-O2
4	A	2609	EDO	O1-C1-C2-O2
4	A	2611	EDO	O1-C1-C2-O2
4	A	2606	EDO	O1-C1-C2-O2
4	A	2603	EDO	O1-C1-C2-O2
4	A	2604	EDO	O1-C1-C2-O2
4	A	2607	EDO	O1-C1-C2-O2

There are no ring outliers.

3 monomers are involved in 4 short contacts:

Mol	Chain	Res	Type	Clashes	Symm-Clashes
4	A	2607	EDO	1	0
4	A	2608	EDO	1	0
2	A	2612	ACT	2	0

The following is a two-dimensional graphical depiction of Mogul quality analysis of bond lengths, bond angles, torsion angles, and ring geometry for all instances of the Ligand of Interest. In addition, ligands with molecular weight > 250 and outliers as shown on the validation Tables will also be included. For torsion angles, if less than 5% of the Mogul distribution of torsion angles is within 10 degrees of the torsion angle in question, then that torsion angle is considered an outlier. Any bond that is central to one or more torsion angles identified as an outlier by Mogul will be highlighted in the graph. For rings, the root-mean-square deviation (RMSD) between the ring in question and similar rings identified by Mogul is calculated over all ring torsion angles. If the average RMSD is greater than 60 degrees and the minimal RMSD between the ring in question and any Mogul-identified rings is also greater than 60 degrees, then that ring is considered an outlier. The outliers are highlighted in purple. The color gray indicates Mogul did not find sufficient equivalents in the CSD to analyse the geometry.



5.7 Other polymers [i](#)

There are no such residues in this entry.

5.8 Polymer linkage issues [i](#)

There are no chain breaks in this entry.

6 Fit of model and data ⓘ

6.1 Protein, DNA and RNA chains ⓘ

In the following table, the column labelled ‘#RSRZ> 2’ contains the number (and percentage) of RSRZ outliers, followed by percent RSRZ outliers for the chain as percentile scores relative to all X-ray entries and entries of similar resolution. The OWAB column contains the minimum, median, 95th percentile and maximum values of the occupancy-weighted average B-factor per residue. The column labelled ‘Q< 0.9’ lists the number of (and percentage) of residues with an average occupancy less than 0.9.

Mol	Chain	Analysed	<RSRZ>	#RSRZ>2	OWAB(Å ²)	Q<0.9
1	A	590/719 (82%)	0.00	23 (3%) 39 38	27, 46, 86, 110	0

All (23) RSRZ outliers are listed below:

Mol	Chain	Res	Type	RSRZ
1	A	592	PRO	7.6
1	A	590	TYR	6.4
1	A	591	MET	4.6
1	A	593	HIS	3.9
1	A	454	PHE	3.9
1	A	575	PHE	3.8
1	A	578	GLN	3.7
1	A	518	GLY	3.3
1	A	2	ASN	3.3
1	A	580	PHE	3.3
1	A	51	SER	3.2
1	A	589	ASP	2.9
1	A	49	GLN	2.8
1	A	519	ARG	2.8
1	A	579	LYS	2.5
1	A	457	GLY	2.4
1	A	214	TRP	2.4
1	A	583	HIS	2.4
1	A	113	ASP	2.4
1	A	52	LYS	2.3
1	A	16	ASN	2.3
1	A	24	VAL	2.1
1	A	210	GLN	2.0

6.2 Non-standard residues in protein, DNA, RNA chains [i](#)

There are no non-standard protein/DNA/RNA residues in this entry.

6.3 Carbohydrates [i](#)

There are no monosaccharides in this entry.

6.4 Ligands [i](#)

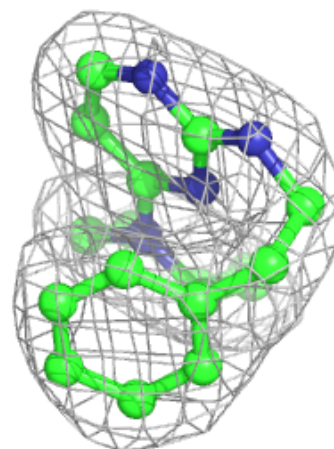
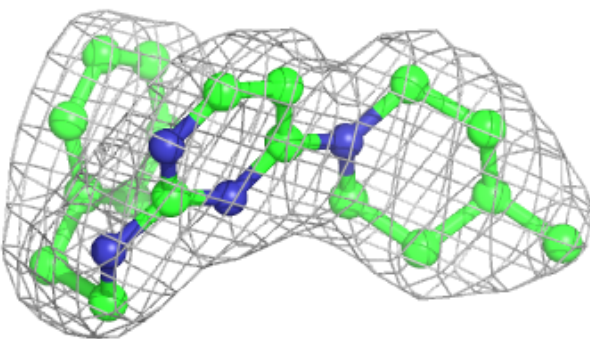
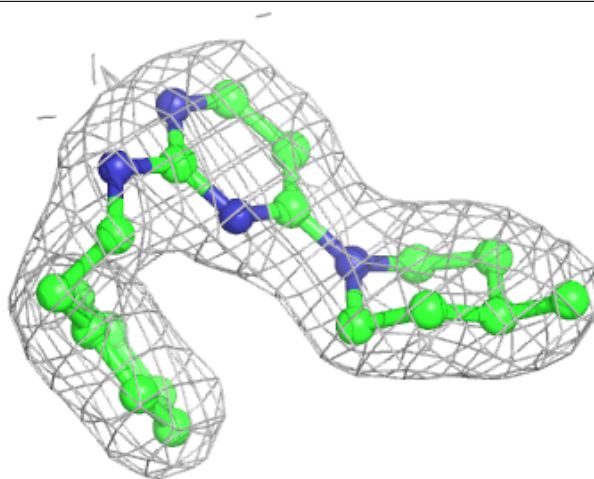
In the following table, the Atoms column lists the number of modelled atoms in the group and the number defined in the chemical component dictionary. The B-factors column lists the minimum, median, 95th percentile and maximum values of B factors of atoms in the group. The column labelled 'Q< 0.9' lists the number of atoms with occupancy less than 0.9.

Mol	Type	Chain	Res	Atoms	RSCC	RSR	B-factors(\AA^2)	Q<0.9
4	EDO	A	2608	4/4	0.78	0.29	67,75,75,76	0
4	EDO	A	2613	4/4	0.79	0.20	57,62,64,66	0
4	EDO	A	2604	4/4	0.82	0.30	66,68,69,69	0
4	EDO	A	2606	4/4	0.82	0.14	56,61,62,63	0
4	EDO	A	2609	4/4	0.86	0.14	63,67,69,70	0
4	EDO	A	2603	4/4	0.88	0.18	72,73,73,76	0
2	ACT	A	2612	4/4	0.90	0.17	67,70,72,74	0
4	EDO	A	2610	4/4	0.90	0.32	63,63,69,70	0
4	EDO	A	2605	4/4	0.90	0.12	58,62,64,65	0
2	ACT	A	2601	4/4	0.90	0.17	64,64,64,68	0
4	EDO	A	2607	4/4	0.92	0.25	63,65,66,67	0
4	EDO	A	2611	4/4	0.92	0.12	62,63,64,65	0
3	VUA	A	2602	22/22	0.95	0.14	40,46,53,55	0

The following is a graphical depiction of the model fit to experimental electron density of all instances of the Ligand of Interest. In addition, ligands with molecular weight > 250 and outliers as shown on the geometry validation Tables will also be included. Each fit is shown from different orientation to approximate a three-dimensional view.

Electron density around VUA A 2602:

$2mF_o-DF_c$ (at 0.7 rmsd) in gray
 mF_o-DF_c (at 3 rmsd) in purple (negative)
and green (positive)



6.5 Other polymers [i](#)

There are no such residues in this entry.