



Full wwPDB X-ray Structure Validation Report ⓘ

Aug 21, 2020 – 11:40 PM BST

PDB ID : 4K5E
Title : Structure of neuronal nitric oxide synthase heme domain in complex with (R)-1,2-bis((2-amino-4-methylpyridin-6-yl)-methoxy)-propan-3-amine
Authors : Li, H.; Poulos, T.L.
Deposited on : 2013-04-14
Resolution : 1.89 Å(reported)

This is a Full wwPDB X-ray Structure Validation Report for a publicly released PDB entry.

We welcome your comments at validation@mail.wwpdb.org

A user guide is available at

<https://www.wwpdb.org/validation/2017/XrayValidationReportHelp>

with specific help available everywhere you see the ⓘ symbol.

The following versions of software and data (see [references ⓘ](#)) were used in the production of this report:

MolProbity : 4.02b-467
Mogul : 1.8.5 (274361), CSD as541be (2020)
Xtriage (Phenix) : 1.13
EDS : 2.13.1
buster-report : 1.1.7 (2018)
Percentile statistics : 20191225.v01 (using entries in the PDB archive December 25th 2019)
Refmac : 5.8.0158
CCP4 : 7.0.044 (Gargrove)
Ideal geometry (proteins) : Engh & Huber (2001)
Ideal geometry (DNA, RNA) : Parkinson et al. (1996)
Validation Pipeline (wwPDB-VP) : 2.13.1

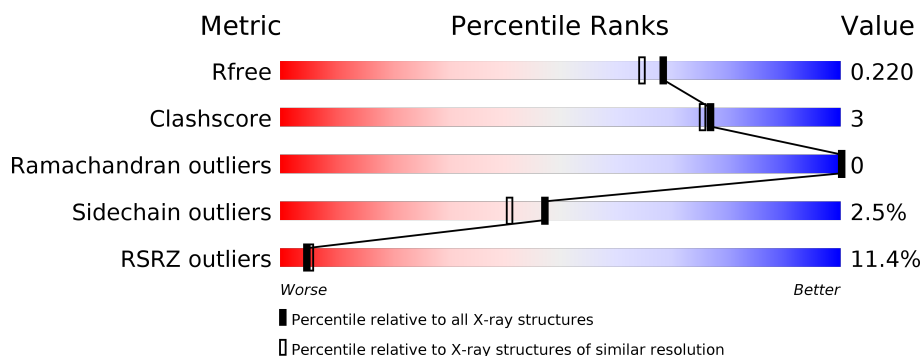
1 Overall quality at a glance ⓘ

The following experimental techniques were used to determine the structure:

X-RAY DIFFRACTION

The reported resolution of this entry is 1.89 Å.

Percentile scores (ranging between 0-100) for global validation metrics of the entry are shown in the following graphic. The table shows the number of entries on which the scores are based.



Metric	Whole archive (#Entries)	Similar resolution (#Entries, resolution range(Å))
R_{free}	130704	6207 (1.90-1.90)
Clashscore	141614	6847 (1.90-1.90)
Ramachandran outliers	138981	6760 (1.90-1.90)
Sidechain outliers	138945	6760 (1.90-1.90)
RSRZ outliers	127900	6082 (1.90-1.90)

The table below summarises the geometric issues observed across the polymeric chains and their fit to the electron density. The red, orange, yellow and green segments on the lower bar indicate the fraction of residues that contain outliers for ≥ 3 , 2, 1 and 0 types of geometric quality criteria respectively. A grey segment represents the fraction of residues that are not modelled. The numeric value for each fraction is indicated below the corresponding segment, with a dot representing fractions $\leq 5\%$. The upper red bar (where present) indicates the fraction of residues that have poor fit to the electron density. The numeric value is given above the bar.

Mol	Chain	Length	Quality of chain
1	A	422	<div> <div>14%</div> <div> <div></div> <div>88%</div> <div>8%</div> <div>••</div> </div> </div>
1	B	422	<div> <div>8%</div> <div> <div></div> <div>91%</div> <div>6%</div> <div>•</div> </div> </div>

2 Entry composition [i](#)

There are 7 unique types of molecules in this entry. The entry contains 7308 atoms, of which 0 are hydrogens and 0 are deuteriums.

In the tables below, the ZeroOcc column contains the number of atoms modelled with zero occupancy, the AltConf column contains the number of residues with at least one atom in alternate conformation and the Trace column contains the number of residues modelled with at most 2 atoms.

- Molecule 1 is a protein called Nitric oxide synthase, brain.

Mol	Chain	Residues	Atoms					ZeroOcc	AltConf	Trace
1	A	407	Total	C	N	O	S	0	2	0
			3316	2121	567	606	22			
1	B	411	Total	C	N	O	S	0	4	0
			3353	2143	575	612	23			

There are 2 discrepancies between the modelled and reference sequences:

Chain	Residue	Modelled	Actual	Comment	Reference
A	598	CYS	TYR	CLONING ARTIFACT	UNP P29476
B	598	CYS	TYR	CLONING ARTIFACT	UNP P29476

- Molecule 2 is PROTOPORPHYRIN IX CONTAINING FE (three-letter code: HEM) (formula: $C_{34}H_{32}FeN_4O_4$).



Mol	Chain	Residues	Atoms					ZeroOcc	AltConf
2	A	1	Total	C	Fe	N	O	0	0
			43	34	1	4	4		

Continued on next page...

Continued from previous page...

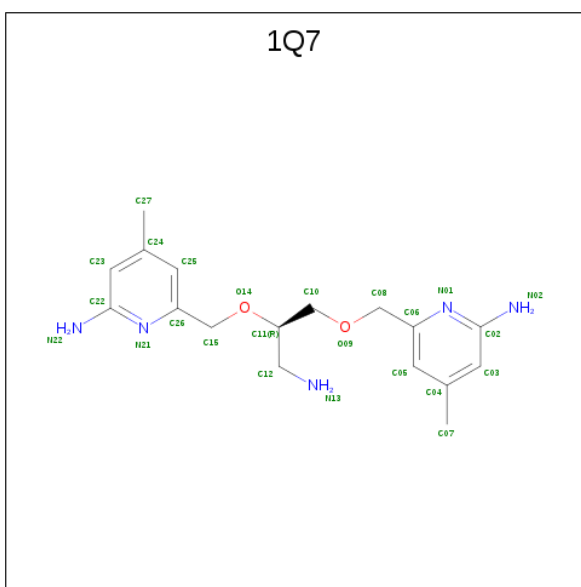
Mol	Chain	Residues	Atoms					ZeroOcc	AltConf
2	B	1	Total	C	Fe	N	O	0	0
			43	34	1	4	4		

- Molecule 3 is 5,6,7,8-TETRAHYDROBIOPTERIN (three-letter code: H4B) (formula: $C_9H_{15}N_5O_3$).



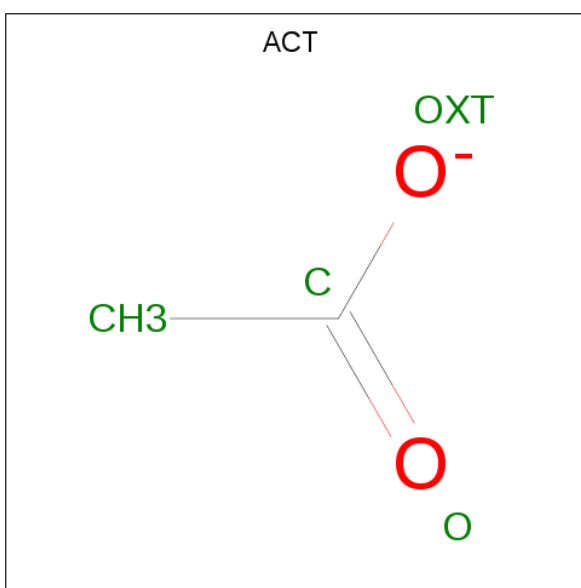
Mol	Chain	Residues	Atoms				ZeroOcc	AltConf
3	A	1	Total	C	N	O	0	0
			17	9	5	3		
3	B	1	Total	C	N	O	0	0
			17	9	5	3		

- Molecule 4 is 6,6'-{[(2R)-3-aminopropane-1,2-diyl]bis(oxymethanediyl)}bis(4-methylpyridin-2-amine) (three-letter code: 1Q7) (formula: $C_{17}H_{25}N_5O_2$).



Mol	Chain	Residues	Atoms				ZeroOcc	AltConf
4	A	1	Total	C	N	O	0	0
			24	17	5	2		
4	B	1	Total	C	N	O	0	0
			24	17	5	2		

- Molecule 5 is ACETATE ION (three-letter code: ACT) (formula: $C_2H_3O_2$).



Mol	Chain	Residues	Atoms			ZeroOcc	AltConf
5	A	1	Total	C	O	0	0
			4	2	2		
5	B	1	Total	C	O	0	0
			4	2	2		

- Molecule 6 is ZINC ION (three-letter code: ZN) (formula: Zn).

Mol	Chain	Residues	Atoms		ZeroOcc	AltConf
6	A	1	Total 1	Zn 1	0	0

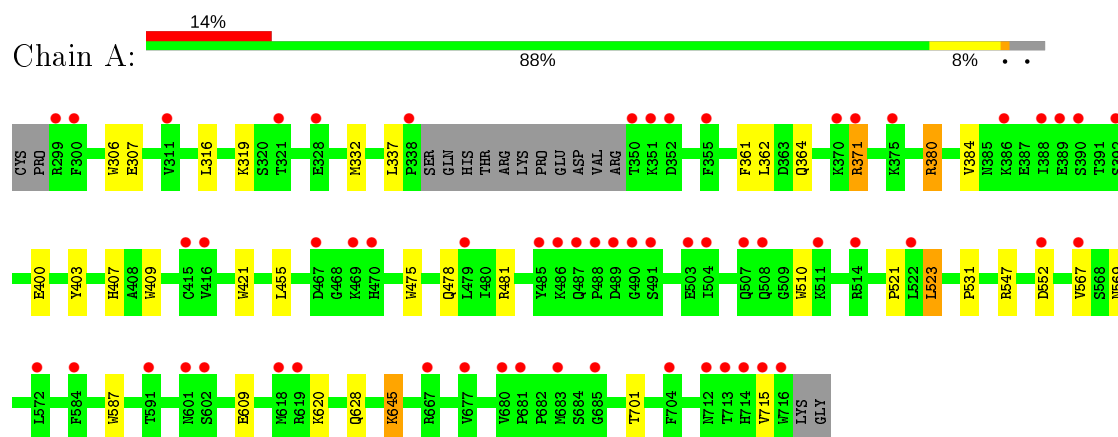
- Molecule 7 is water.

Mol	Chain	Residues	Atoms		ZeroOcc	AltConf
7	A	178	Total 178	O 178	0	0
7	B	284	Total 284	O 284	0	0

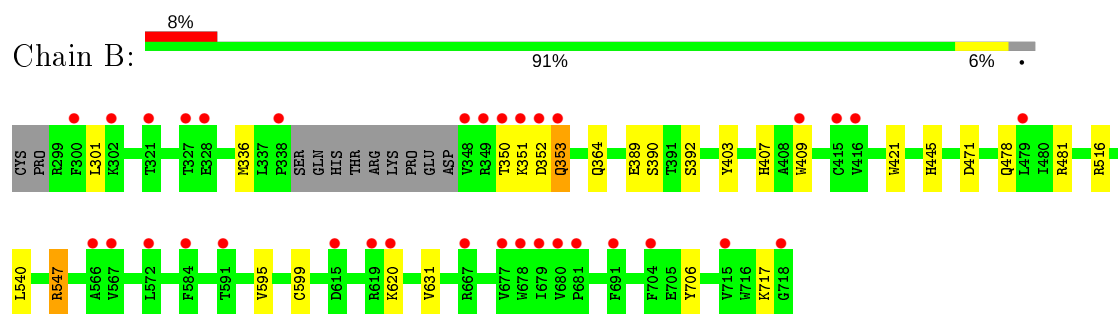
3 Residue-property plots [i](#)

These plots are drawn for all protein, RNA, DNA and oligosaccharide chains in the entry. The first graphic for a chain summarises the proportions of the various outlier classes displayed in the second graphic. The second graphic shows the sequence view annotated by issues in geometry and electron density. Residues are color-coded according to the number of geometric quality criteria for which they contain at least one outlier: green = 0, yellow = 1, orange = 2 and red = 3 or more. A red dot above a residue indicates a poor fit to the electron density ($RSRZ > 2$). Stretches of 2 or more consecutive residues without any outlier are shown as a green connector. Residues present in the sample, but not in the model, are shown in grey.

- Molecule 1: Nitric oxide synthase, brain



- Molecule 1: Nitric oxide synthase, brain



4 Data and refinement statistics

Property	Value	Source
Space group	P 21 21 21	Depositor
Cell constants a, b, c, α , β , γ	52.00Å 110.67Å 164.39Å 90.00° 90.00° 90.00°	Depositor
Resolution (Å)	32.24 – 1.89 33.65 – 1.89	Depositor EDS
% Data completeness (in resolution range)	98.9 (32.24-1.89) 98.9 (33.65-1.89)	Depositor EDS
R_{merge}	0.05	Depositor
R_{sym}	0.05	Depositor
$\langle I/\sigma(I) \rangle$ ¹	2.45 (at 1.89Å)	Xtriage
Refinement program	REFMAC	Depositor
R, R_{free}	0.180 , 0.212 0.192 , 0.220	Depositor DCC
R_{free} test set	3761 reflections (4.97%)	wwPDB-VP
Wilson B-factor (Å ²)	29.6	Xtriage
Anisotropy	0.606	Xtriage
Bulk solvent k_{sol} (e/Å ³), B_{sol} (Å ²)	0.37 , 42.2	EDS
L-test for twinning ²	$\langle L \rangle = 0.48$, $\langle L^2 \rangle = 0.31$	Xtriage
Estimated twinning fraction	No twinning to report.	Xtriage
F_o, F_c correlation	0.96	EDS
Total number of atoms	7308	wwPDB-VP
Average B, all atoms (Å ²)	37.0	wwPDB-VP

Xtriage's analysis on translational NCS is as follows: *The largest off-origin peak in the Patterson function is 4.58% of the height of the origin peak. No significant pseudotranslation is detected.*

¹Intensities estimated from amplitudes.

²Theoretical values of $\langle |L| \rangle$, $\langle L^2 \rangle$ for acentric reflections are 0.5, 0.333 respectively for untwinned datasets, and 0.375, 0.2 for perfectly twinned datasets.

5 Model quality

5.1 Standard geometry

Bond lengths and bond angles in the following residue types are not validated in this section: HEM, ZN, ACT, H4B, 1Q7

The Z score for a bond length (or angle) is the number of standard deviations the observed value is removed from the expected value. A bond length (or angle) with $|Z| > 5$ is considered an outlier worth inspection. RMSZ is the root-mean-square of all Z scores of the bond lengths (or angles).

Mol	Chain	Bond lengths		Bond angles	
		RMSZ	# Z >5	RMSZ	# Z >5
1	A	0.65	0/3414	0.66	0/4633
1	B	0.73	0/3457	0.71	2/4686 (0.0%)
All	All	0.69	0/6871	0.69	2/9319 (0.0%)

There are no bond length outliers.

All (2) bond angle outliers are listed below:

Mol	Chain	Res	Type	Atoms	Z	Observed(°)	Ideal(°)
1	B	547	ARG	NE-CZ-NH2	-5.35	117.62	120.30
1	B	471	ASP	CB-CG-OD2	5.25	123.03	118.30

There are no chirality outliers.

There are no planarity outliers.

5.2 Too-close contacts

In the following table, the Non-H and H(model) columns list the number of non-hydrogen atoms and hydrogen atoms in the chain respectively. The H(added) column lists the number of hydrogen atoms added and optimized by MolProbity. The Clashes column lists the number of clashes within the asymmetric unit, whereas Symm-Clashes lists symmetry related clashes.

Mol	Chain	Non-H	H(model)	H(added)	Clashes	Symm-Clashes
1	A	3316	0	3230	24	0
1	B	3353	0	3276	14	0
2	A	43	0	30	3	0
2	B	43	0	30	4	0
3	A	17	0	15	0	0
3	B	17	0	15	0	0
4	A	24	0	25	2	0

Continued on next page...

Continued from previous page...

Mol	Chain	Non-H	H(model)	H(added)	Clashes	Symm-Clashes
4	B	24	0	25	2	0
5	A	4	0	3	0	0
5	B	4	0	3	0	0
6	A	1	0	0	0	0
7	A	178	0	0	2	0
7	B	284	0	0	4	0
All	All	7308	0	6652	41	0

The all-atom clashscore is defined as the number of clashes found per 1000 atoms (including hydrogen atoms). The all-atom clashscore for this structure is 3.

All (41) close contacts within the same asymmetric unit are listed below, sorted by their clash magnitude.

Atom-1	Atom-2	Interatomic distance (Å)	Clash overlap (Å)
2:A:801:HEM:HMC2	2:A:801:HEM:HBC2	1.67	0.76
1:A:371:ARG:HH21	1:A:371:ARG:CG	2.03	0.71
1:A:316:LEU:HD12	1:A:319:LYS:HD2	1.82	0.61
2:B:801:HEM:HBA2	4:B:803:1Q7:H18	1.83	0.60
1:A:478:GLN:HB2	1:A:481:ARG:HG3	1.84	0.59
1:A:371:ARG:CG	1:A:371:ARG:NH2	2.67	0.56
1:A:371:ARG:HH21	1:A:371:ARG:HG3	1.71	0.56
1:B:351:LYS:HE3	1:B:392:SER:OG	2.05	0.56
1:A:523:LEU:HD22	1:A:531:PRO:HB2	1.87	0.55
2:B:801:HEM:HBB2	2:B:801:HEM:HHC	1.89	0.55
1:A:380:ARG:HD3	1:A:400:GLU:OE1	2.06	0.54
1:A:475:TRP:HB2	1:A:523:LEU:HB3	1.92	0.51
1:A:628:GLN:HG2	1:B:631:VAL:HG11	1.93	0.50
1:B:403:TYR:CE1	1:B:407:HIS:CE1	3.00	0.49
1:A:371:ARG:HG2	1:A:371:ARG:NH2	2.27	0.49
2:A:801:HEM:HHC	2:A:801:HEM:HBB2	1.96	0.48
1:A:567:VAL:HG22	4:A:803:1Q7:H16	1.94	0.48
1:A:609:GLU:HG3	7:A:903:HOH:O	2.14	0.47
1:B:478:GLN:HB2	1:B:481:ARG:HG3	1.98	0.46
1:B:706:TYR:OH	2:B:801:HEM:O1D	2.20	0.45
1:A:332:MET:HE2	1:B:301:LEU:HD13	1.98	0.45
1:A:455:LEU:HD12	1:A:587:TRP:HB3	1.99	0.45
1:B:717:LYS:NZ	7:B:1176:HOH:O	2.49	0.45
1:A:567:VAL:CG2	4:A:803:1Q7:H16	2.46	0.45
1:A:306:TRP:CD1	1:B:336:MET:HE2	2.52	0.45
1:A:307:GLU:HG3	7:B:902:HOH:O	2.17	0.45
1:A:510:TRP:CE2	1:A:521:PRO:HD3	2.53	0.44

Continued on next page...

Continued from previous page...

Atom-1	Atom-2	Interatomic distance (Å)	Clash overlap (Å)
1:A:701[A]:THR:HG23	7:A:1014:HOH:O	2.17	0.43
2:A:801:HEM:CMC	2:A:801:HEM:HBC2	2.44	0.42
1:A:362:LEU:HD11	1:A:384:VAL:HG21	2.01	0.42
1:A:409:TRP:CE3	1:A:421:TRP:HA	2.54	0.42
1:B:595:VAL:O	1:B:599:CYS:HB2	2.20	0.42
1:B:409:TRP:CE3	1:B:421:TRP:HA	2.55	0.42
1:A:361:PHE:O	1:A:364:GLN:HG2	2.20	0.41
1:B:516:ARG:HD2	7:B:946:HOH:O	2.20	0.41
1:B:445:HIS:C	1:B:445:HIS:CD2	2.93	0.41
1:B:353:GLN:HB3	1:B:353:GLN:HE21	1.69	0.41
2:B:801:HEM:C1C	4:B:803:1Q7:H26	2.55	0.41
1:A:403:TYR:CE1	1:A:407:HIS:CE1	3.09	0.41
1:B:364:GLN:NE2	7:B:1061:HOH:O	2.46	0.41
1:A:645:LYS:HB2	1:A:645:LYS:HE3	1.63	0.41

There are no symmetry-related clashes.

5.3 Torsion angles [i](#)

5.3.1 Protein backbone [i](#)

In the following table, the Percentiles column shows the percent Ramachandran outliers of the chain as a percentile score with respect to all X-ray entries followed by that with respect to entries of similar resolution.

The Analysed column shows the number of residues for which the backbone conformation was analysed, and the total number of residues.

Mol	Chain	Analysed	Favoured	Allowed	Outliers	Percentiles	
1	A	405/422 (96%)	393 (97%)	12 (3%)	0	100	100
1	B	411/422 (97%)	406 (99%)	5 (1%)	0	100	100
All	All	816/844 (97%)	799 (98%)	17 (2%)	0	100	100

There are no Ramachandran outliers to report.

5.3.2 Protein sidechains [i](#)

In the following table, the Percentiles column shows the percent sidechain outliers of the chain as a percentile score with respect to all X-ray entries followed by that with respect to entries of similar resolution.

The Analysed column shows the number of residues for which the sidechain conformation was analysed, and the total number of residues.

Mol	Chain	Analysed	Rotameric	Outliers	Percentiles	
1	A	365/377 (97%)	355 (97%)	10 (3%)	44	38
1	B	370/377 (98%)	362 (98%)	8 (2%)	52	47
All	All	735/754 (98%)	717 (98%)	18 (2%)	47	43

All (18) residues with a non-rotameric sidechain are listed below:

Mol	Chain	Res	Type
1	A	337	LEU
1	A	371	ARG
1	A	380	ARG
1	A	523	LEU
1	A	547	ARG
1	A	552	ASP
1	A	569	ASN
1	A	620	LYS
1	A	645	LYS
1	A	715	VAL
1	B	350	THR
1	B	352	ASP
1	B	353	GLN
1	B	389	GLU
1	B	390	SER
1	B	540	LEU
1	B	547	ARG
1	B	620	LYS

Some sidechains can be flipped to improve hydrogen bonding and reduce clashes. All (16) such sidechains are listed below:

Mol	Chain	Res	Type
1	A	353	GLN
1	A	425	GLN
1	A	454	ASN
1	A	487	GLN
1	A	507	GLN
1	A	569	ASN
1	A	605	ASN
1	A	628	GLN
1	A	697	ASN

Continued on next page...

Continued from previous page...

Mol	Chain	Res	Type
1	B	364	GLN
1	B	440	ASN
1	B	454	ASN
1	B	507	GLN
1	B	605	ASN
1	B	642	GLN
1	B	697	ASN

5.3.3 RNA [i](#)

There are no RNA molecules in this entry.

5.4 Non-standard residues in protein, DNA, RNA chains [i](#)

There are no non-standard protein/DNA/RNA residues in this entry.

5.5 Carbohydrates [i](#)

There are no monosaccharides in this entry.

5.6 Ligand geometry [i](#)

Of 9 ligands modelled in this entry, 1 is monoatomic - leaving 8 for Mogul analysis.

In the following table, the Counts columns list the number of bonds (or angles) for which Mogul statistics could be retrieved, the number of bonds (or angles) that are observed in the model and the number of bonds (or angles) that are defined in the Chemical Component Dictionary. The Link column lists molecule types, if any, to which the group is linked. The Z score for a bond length (or angle) is the number of standard deviations the observed value is removed from the expected value. A bond length (or angle) with $|Z| > 2$ is considered an outlier worth inspection. RMSZ is the root-mean-square of all Z scores of the bond lengths (or angles).

Mol	Type	Chain	Res	Link	Bond lengths			Bond angles		
					Counts	RMSZ	# Z > 2	Counts	RMSZ	# Z > 2
3	H4B	B	802	-	16,18,18	1.25	1 (6%)	11,26,26	2.55	4 (36%)
3	H4B	A	802	-	16,18,18	0.88	0	11,26,26	2.64	6 (54%)
4	1Q7	A	803	-	24,25,25	0.66	0	30,33,33	1.92	7 (23%)
4	1Q7	B	803	-	24,25,25	0.73	0	30,33,33	1.81	11 (36%)
5	ACT	A	804	-	1,3,3	1.37	0	0,3,3	0.00	-
2	HEM	A	801	1	27,50,50	2.17	7 (25%)	17,82,82	2.24	5 (29%)

Mol	Type	Chain	Res	Link	Bond lengths			Bond angles		
					Counts	RMSZ	# Z > 2	Counts	RMSZ	# Z > 2
2	HEM	B	801	1	27,50,50	2.13	9 (33%)	17,82,82	2.03	2 (11%)
5	ACT	B	804	-	1,3,3	1.70	0	0,3,3	0.00	-

In the following table, the Chirals column lists the number of chiral outliers, the number of chiral centers analysed, the number of these observed in the model and the number defined in the Chemical Component Dictionary. Similar counts are reported in the Torsion and Rings columns. '-' means no outliers of that kind were identified.

Mol	Type	Chain	Res	Link	Chirals	Torsions	Rings
3	H4B	B	802	-	-	0/8/17/17	0/2/2/2
3	H4B	A	802	-	-	0/8/17/17	0/2/2/2
4	1Q7	A	803	-	-	5/13/13/13	0/2/2/2
4	1Q7	B	803	-	-	6/13/13/13	0/2/2/2
2	HEM	A	801	1	-	0/6/54/54	-
2	HEM	B	801	1	-	0/6/54/54	-

All (17) bond length outliers are listed below:

Mol	Chain	Res	Type	Atoms	Z	Observed(Å)	Ideal(Å)
2	A	801	HEM	C3B-C2B	-5.19	1.33	1.40
2	A	801	HEM	C3D-C2D	4.95	1.52	1.37
2	B	801	HEM	C3B-C2B	-4.47	1.34	1.40
2	B	801	HEM	C3C-C2C	-4.29	1.34	1.40
2	B	801	HEM	C3D-C2D	4.18	1.50	1.37
2	B	801	HEM	C3C-CAC	3.80	1.55	1.47
2	A	801	HEM	C3C-C2C	-3.69	1.35	1.40
2	A	801	HEM	C3C-CAC	3.66	1.55	1.47
2	A	801	HEM	C3B-CAB	3.29	1.54	1.47
2	B	801	HEM	C3B-CAB	2.80	1.53	1.47
2	B	801	HEM	CMA-C3A	2.75	1.57	1.51
2	B	801	HEM	CAD-C3D	2.71	1.57	1.52
3	B	802	H4B	C7-N8	2.67	1.49	1.44
2	B	801	HEM	CMD-C2D	2.25	1.56	1.51
2	B	801	HEM	CAA-C2A	2.13	1.55	1.52
2	A	801	HEM	CMC-C2C	2.12	1.56	1.51
2	A	801	HEM	CMD-C2D	2.09	1.56	1.51

All (35) bond angle outliers are listed below:

Mol	Chain	Res	Type	Atoms	Z	Observed(°)	Ideal(°)
3	B	802	H4B	C4-C4A-C8A	5.68	119.61	114.57

Continued on next page...

Continued from previous page...

Mol	Chain	Res	Type	Atoms	Z	Observed(°)	Ideal(°)
2	A	801	HEM	CBA-CAA-C2A	-5.35	102.62	112.49
2	A	801	HEM	CBD-CAD-C3D	-5.32	102.68	112.48
2	B	801	HEM	CBA-CAA-C2A	-5.21	102.88	112.49
3	A	802	H4B	C4-C4A-C8A	4.91	118.94	114.57
4	A	803	1Q7	C02-N01-C06	4.88	121.80	118.10
2	B	801	HEM	CBD-CAD-C3D	-4.75	103.73	112.48
4	A	803	1Q7	C22-N21-C26	4.62	121.60	118.10
4	A	803	1Q7	C24-C25-C26	-4.26	117.53	120.32
4	B	803	1Q7	C02-N01-C06	3.73	120.93	118.10
4	B	803	1Q7	C22-N21-C26	3.54	120.78	118.10
3	A	802	H4B	N3-C2-N1	-3.51	119.92	125.42
3	B	802	H4B	C4-N3-C2	3.50	121.50	115.93
3	A	802	H4B	C4-N3-C2	3.35	121.26	115.93
4	B	803	1Q7	C08-C06-N01	3.19	122.17	115.71
4	A	803	1Q7	C08-C06-N01	3.17	122.13	115.71
3	B	802	H4B	N3-C2-N1	-3.13	120.51	125.42
4	A	803	1Q7	C05-C06-N01	-3.04	119.68	122.90
3	A	802	H4B	C2-N1-C8A	3.03	121.32	114.54
2	A	801	HEM	CMC-C2C-C3C	3.00	130.29	124.68
3	A	802	H4B	C4-C4A-N5	2.96	121.60	119.12
4	B	803	1Q7	C05-C06-N01	-2.73	120.00	122.90
3	B	802	H4B	C2-N1-C8A	2.51	120.16	114.54
4	B	803	1Q7	C24-C25-C26	-2.50	118.68	120.32
4	B	803	1Q7	C15-C26-N21	2.50	120.78	115.71
4	A	803	1Q7	C07-C04-C05	-2.37	117.43	120.94
4	B	803	1Q7	C08-C06-C05	-2.34	117.83	121.08
4	B	803	1Q7	N22-C22-N21	2.34	120.18	116.49
4	B	803	1Q7	O09-C10-C11	2.33	114.92	109.44
2	A	801	HEM	C4C-C3C-C2C	2.24	108.46	106.90
4	B	803	1Q7	C07-C04-C05	-2.17	117.72	120.94
4	B	803	1Q7	C15-C26-C25	-2.11	118.14	121.08
4	A	803	1Q7	C08-C06-C05	-2.08	118.19	121.08
3	A	802	H4B	N2-C2-N3	2.06	120.45	117.25
2	A	801	HEM	C1D-C2D-C3D	-2.03	105.58	107.00

There are no chirality outliers.

All (11) torsion outliers are listed below:

Mol	Chain	Res	Type	Atoms
4	B	803	1Q7	O14-C11-C12-N13
4	B	803	1Q7	C06-C08-O09-C10
4	B	803	1Q7	C10-C11-C12-N13

Continued on next page...

Continued from previous page...

Mol	Chain	Res	Type	Atoms
4	A	803	1Q7	C26-C15-O14-C11
4	B	803	1Q7	C26-C15-O14-C11
4	A	803	1Q7	O09-C10-C11-C12
4	A	803	1Q7	C06-C08-O09-C10
4	B	803	1Q7	O09-C10-C11-C12
4	B	803	1Q7	O09-C10-C11-O14
4	A	803	1Q7	C11-C10-O09-C08
4	A	803	1Q7	O09-C10-C11-O14

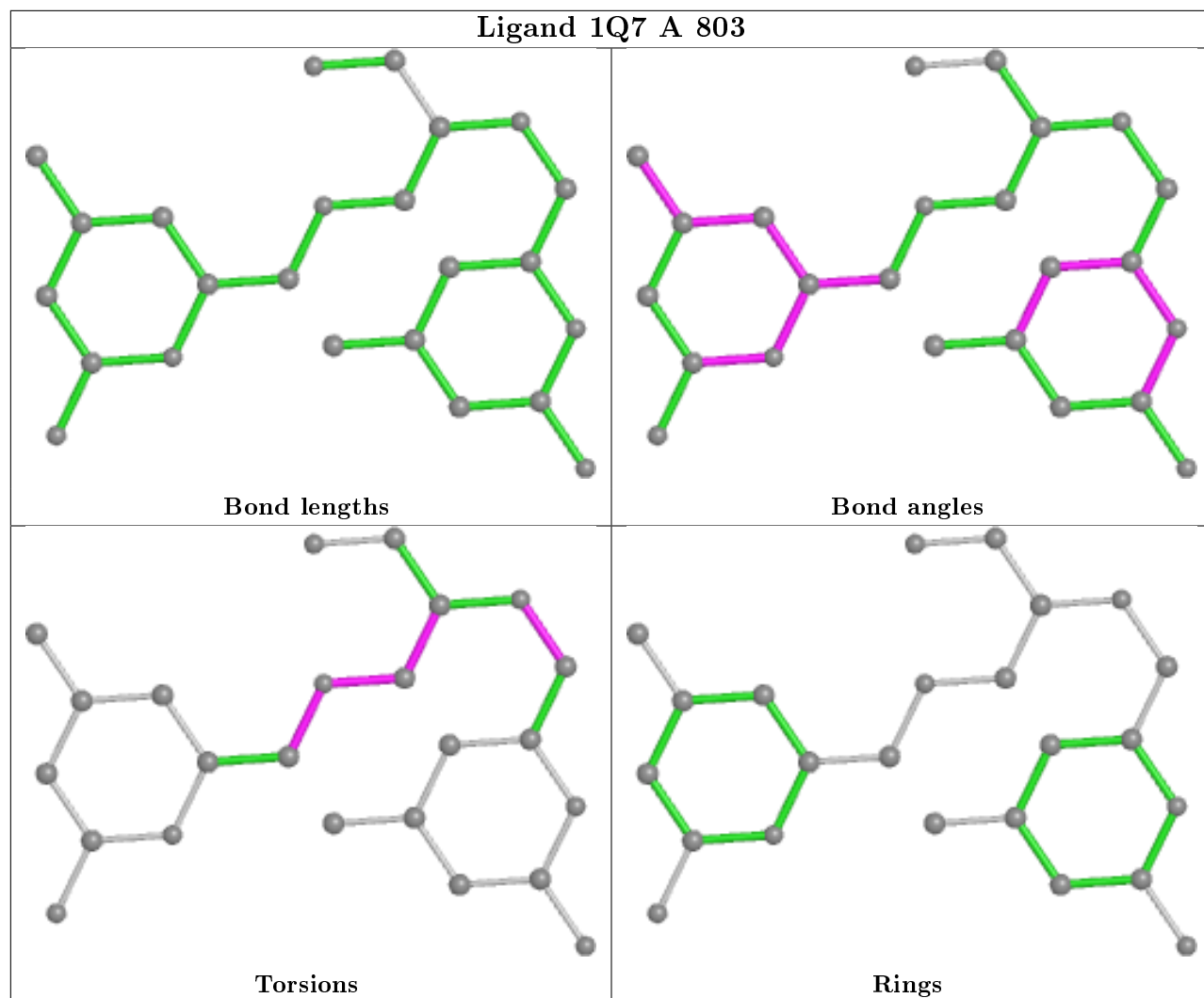
There are no ring outliers.

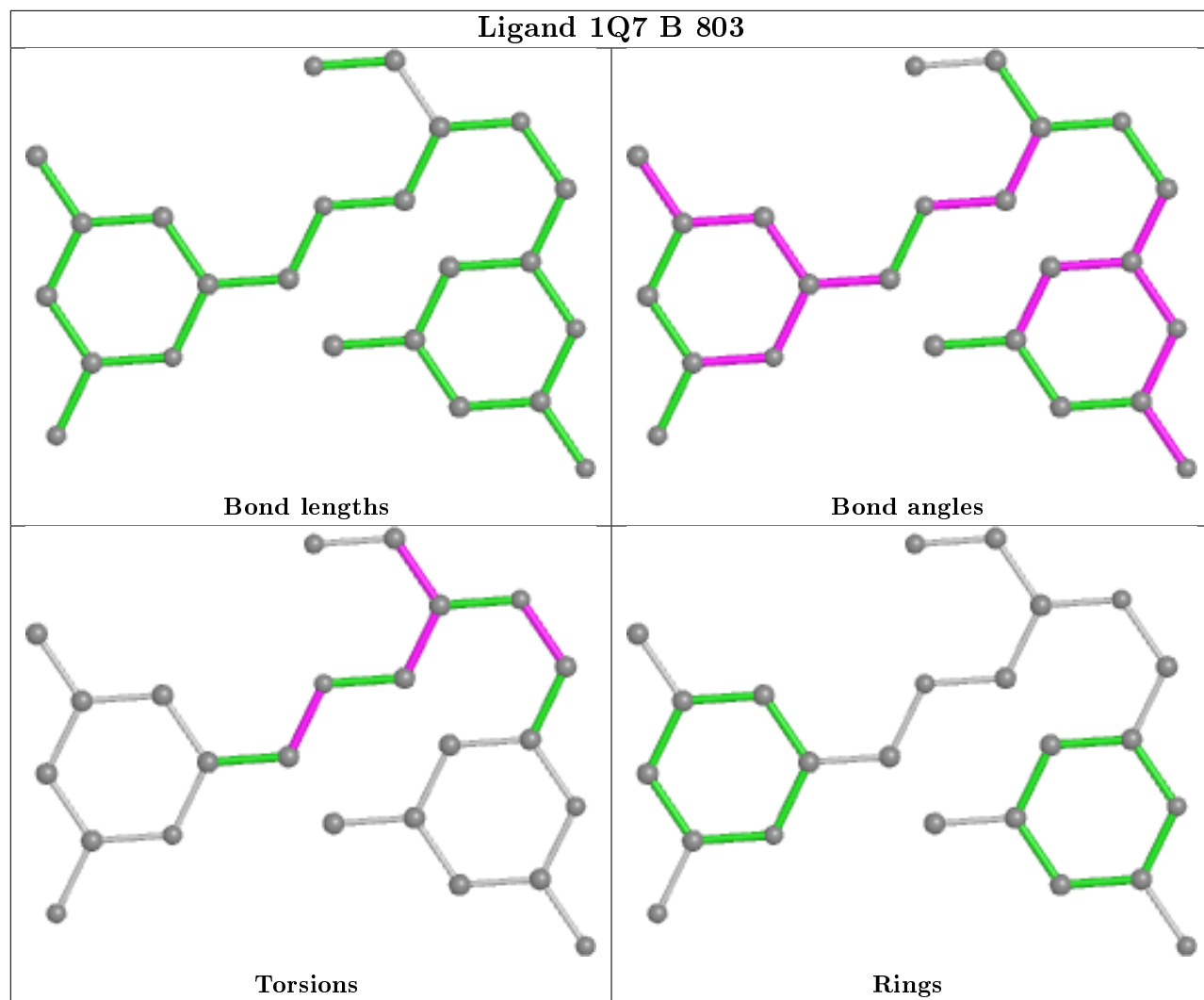
4 monomers are involved in 9 short contacts:

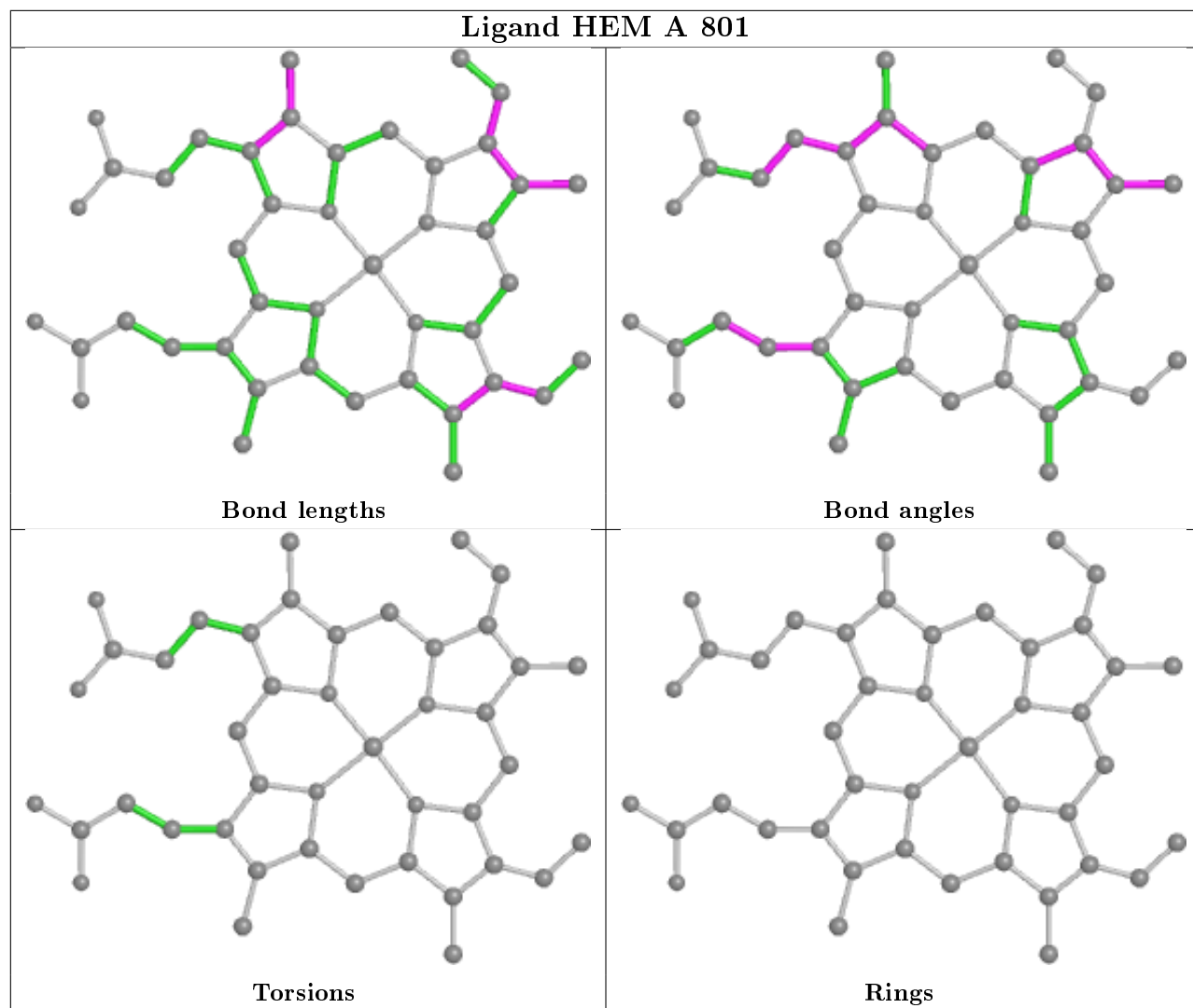
Mol	Chain	Res	Type	Clashes	Symm-Clashes
4	A	803	1Q7	2	0
4	B	803	1Q7	2	0
2	A	801	HEM	3	0
2	B	801	HEM	4	0

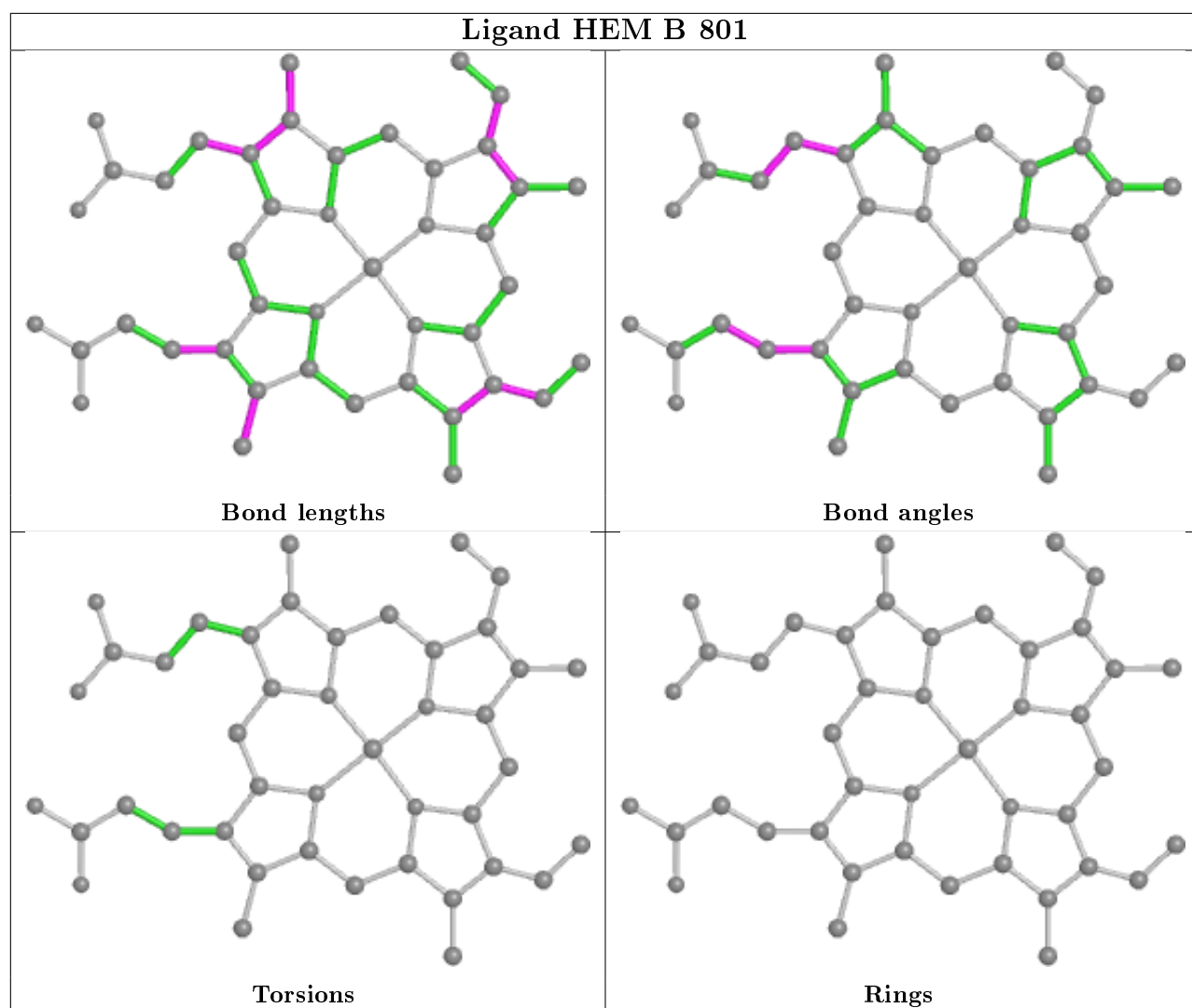
The following is a two-dimensional graphical depiction of Mogul quality analysis of bond lengths, bond angles, torsion angles, and ring geometry for all instances of the Ligand of Interest. In addition, ligands with molecular weight > 250 and outliers as shown on the validation Tables will also be included. For torsion angles, if less than 5% of the Mogul distribution of torsion angles is within 10 degrees of the torsion angle in question, then that torsion angle is considered an outlier. Any bond that is central to one or more torsion angles identified as an outlier by Mogul will be highlighted in the graph. For rings, the root-mean-square deviation (RMSD) between the ring in question and similar rings identified by Mogul is calculated over all ring torsion angles. If the average RMSD is greater than 60 degrees and the minimal RMSD between the ring in question and any Mogul-identified rings is also greater than 60 degrees, then that ring is considered an outlier. The outliers are highlighted in purple. The color gray indicates Mogul did not find sufficient equivalents in the CSD to analyse the geometry.

Ligand 1Q7 A 803









5.7 Other polymers [i](#)

There are no such residues in this entry.

5.8 Polymer linkage issues [i](#)

There are no chain breaks in this entry.

6 Fit of model and data

6.1 Protein, DNA and RNA chains

In the following table, the column labelled ‘#RSRZ> 2’ contains the number (and percentage) of RSRZ outliers, followed by percent RSRZ outliers for the chain as percentile scores relative to all X-ray entries and entries of similar resolution. The OWAB column contains the minimum, median, 95th percentile and maximum values of the occupancy-weighted average B-factor per residue. The column labelled ‘Q< 0.9’ lists the number of (and percentage) of residues with an average occupancy less than 0.9.

Mol	Chain	Analysed	<RSRZ>	#RSRZ>2	OWAB(Å ²)	Q<0.9
1	A	407/422 (96%)	0.77	59 (14%) 2 2	23, 40, 67, 85	0
1	B	411/422 (97%)	0.37	34 (8%) 11 13	20, 31, 52, 77	0
All	All	818/844 (96%)	0.57	93 (11%) 5 5	20, 35, 62, 85	0

All (93) RSRZ outliers are listed below:

Mol	Chain	Res	Type	RSRZ
1	A	351	LYS	7.1
1	B	300	PHE	6.7
1	A	352	ASP	6.7
1	A	715	VAL	6.5
1	A	488	PRO	6.4
1	A	350	THR	6.2
1	A	716	TRP	6.0
1	B	350	THR	5.7
1	A	486	LYS	4.8
1	B	348	VAL	4.6
1	B	718	GLY	4.4
1	B	619	ARG	4.2
1	A	489	ASP	4.2
1	A	713	THR	4.0
1	A	355	PHE	3.9
1	A	619	ARG	3.8
1	A	712	ASN	3.8
1	A	299	ARG	3.8
1	B	338	PRO	3.8
1	A	388	ILE	3.6
1	A	392	SER	3.4
1	A	507	GLN	3.4
1	A	389	GLU	3.4
1	B	416	VAL	3.3

Continued on next page...

Continued from previous page...

Mol	Chain	Res	Type	RSRZ
1	A	490	GLY	3.3
1	A	321	THR	3.2
1	B	352	ASP	3.2
1	A	469	LYS	3.2
1	A	491	SER	3.1
1	B	321	THR	3.0
1	A	572	LEU	3.0
1	A	714	HIS	3.0
1	A	467	ASP	3.0
1	B	591	THR	3.0
1	A	390	SER	3.0
1	B	328	GLU	2.9
1	A	300	PHE	2.8
1	B	567	VAL	2.8
1	A	503	GLU	2.8
1	B	679	ILE	2.8
1	B	704	PHE	2.8
1	B	415	CYS	2.8
1	B	572	LEU	2.7
1	B	409	TRP	2.7
1	A	602	SER	2.7
1	A	487	GLN	2.7
1	A	370	LYS	2.7
1	A	680	VAL	2.7
1	B	584	PHE	2.6
1	A	601[A]	ASN	2.6
1	A	567	VAL	2.6
1	B	349	ARG	2.6
1	B	715	VAL	2.6
1	A	386	LYS	2.6
1	A	479	LEU	2.5
1	B	681	PRO	2.5
1	B	327	THR	2.5
1	B	691	PHE	2.4
1	A	338	PRO	2.4
1	B	620	LYS	2.4
1	A	514	ARG	2.4
1	B	677	VAL	2.4
1	B	615	ASP	2.4
1	A	470	HIS	2.4
1	A	591	THR	2.4
1	A	375	LYS	2.3

Continued on next page...

Continued from previous page...

Mol	Chain	Res	Type	RSRZ
1	A	683	MET	2.3
1	B	680	VAL	2.3
1	B	353	GLN	2.3
1	A	504	ILE	2.2
1	A	415	CYS	2.2
1	A	371	ARG	2.2
1	A	508	GLN	2.2
1	B	667	ARG	2.2
1	A	704	PHE	2.2
1	B	351	LYS	2.2
1	A	511	LYS	2.1
1	A	677	VAL	2.1
1	A	584	PHE	2.1
1	B	479	LEU	2.1
1	B	566	ALA	2.1
1	A	681	PRO	2.1
1	A	328	GLU	2.1
1	A	311	VAL	2.1
1	A	416	VAL	2.1
1	A	522	LEU	2.1
1	B	678	TRP	2.1
1	A	685	GLY	2.1
1	A	618	MET	2.0
1	A	667	ARG	2.0
1	A	485	TYR	2.0
1	A	552	ASP	2.0
1	B	302	LYS	2.0

6.2 Non-standard residues in protein, DNA, RNA chains [i](#)

There are no non-standard protein/DNA/RNA residues in this entry.

6.3 Carbohydrates [i](#)

There are no monosaccharides in this entry.

6.4 Ligands [i](#)

In the following table, the Atoms column lists the number of modelled atoms in the group and the number defined in the chemical component dictionary. The B-factors column lists the minimum,

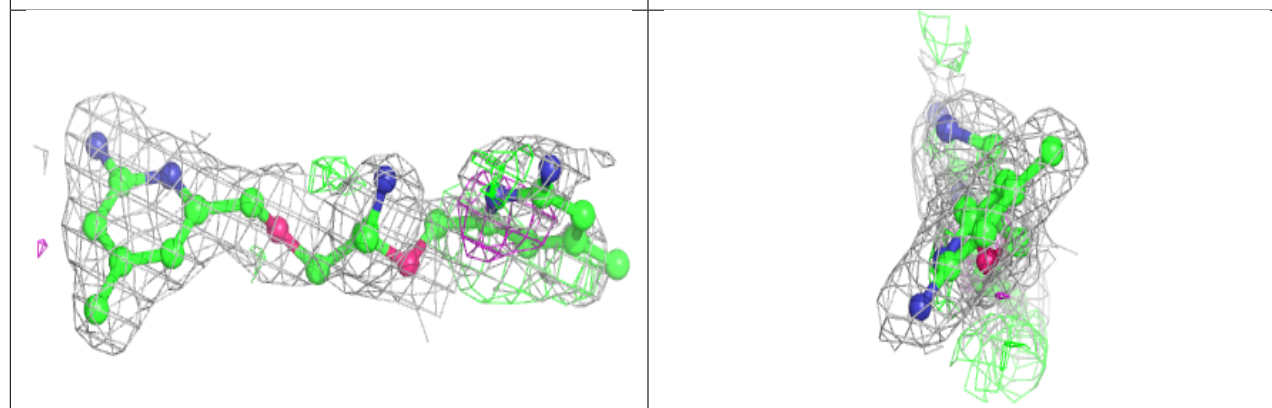
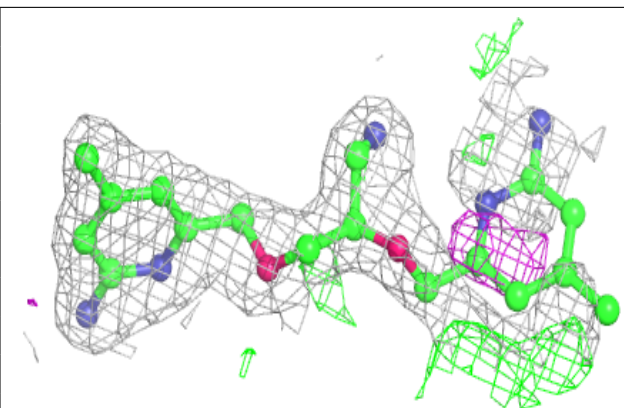
median, 95th percentile and maximum values of B factors of atoms in the group. The column labelled 'Q< 0.9' lists the number of atoms with occupancy less than 0.9.

Mol	Type	Chain	Res	Atoms	RSCC	RSR	B-factors(Å ²)	Q<0.9
4	1Q7	B	803	24/24	0.82	0.28	26,43,75,75	0
4	1Q7	A	803	24/24	0.84	0.25	28,49,72,73	0
3	H4B	B	802	17/17	0.96	0.11	26,29,32,33	0
3	H4B	A	802	17/17	0.96	0.11	28,31,36,36	0
5	ACT	A	804	4/4	0.97	0.13	45,45,46,47	0
5	ACT	B	804	4/4	0.97	0.09	33,36,36,37	0
2	HEM	B	801	43/43	0.98	0.21	20,23,31,32	0
2	HEM	A	801	43/43	0.98	0.17	22,26,33,37	0
6	ZN	A	805	1/1	1.00	0.05	29,29,29,29	0

The following is a graphical depiction of the model fit to experimental electron density of all instances of the Ligand of Interest. In addition, ligands with molecular weight > 250 and outliers as shown on the geometry validation Tables will also be included. Each fit is shown from different orientation to approximate a three-dimensional view.

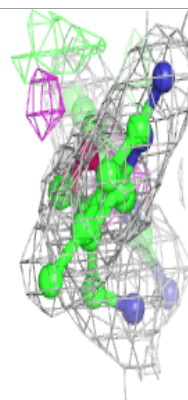
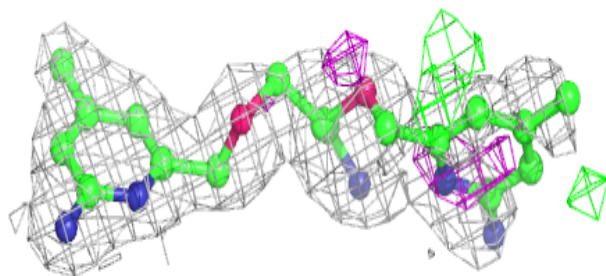
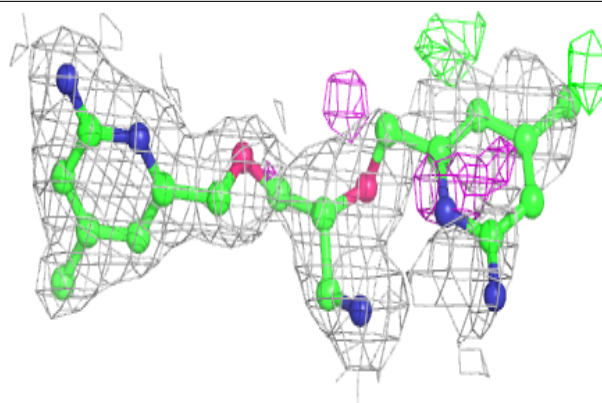
Electron density around 1Q7 B 803:

2mF_o-DF_c (at 0.7 rmsd) in gray
mF_o-DF_c (at 3 rmsd) in purple (negative)
and green (positive)



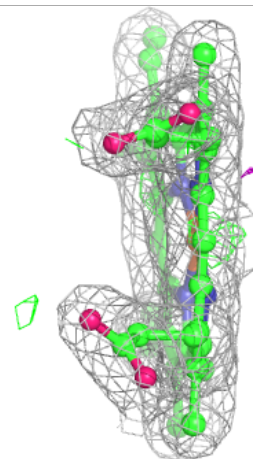
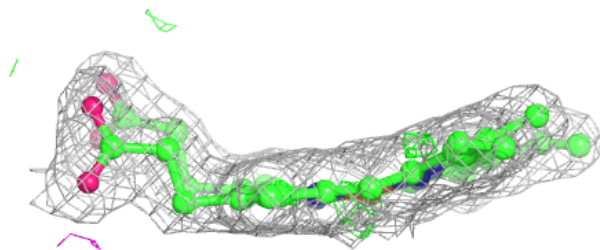
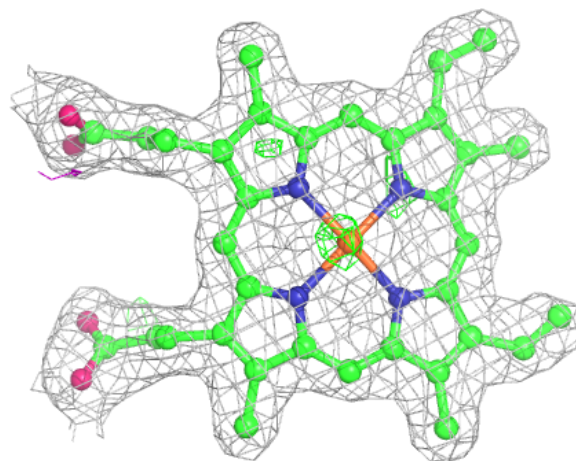
Electron density around 1Q7 A 803:

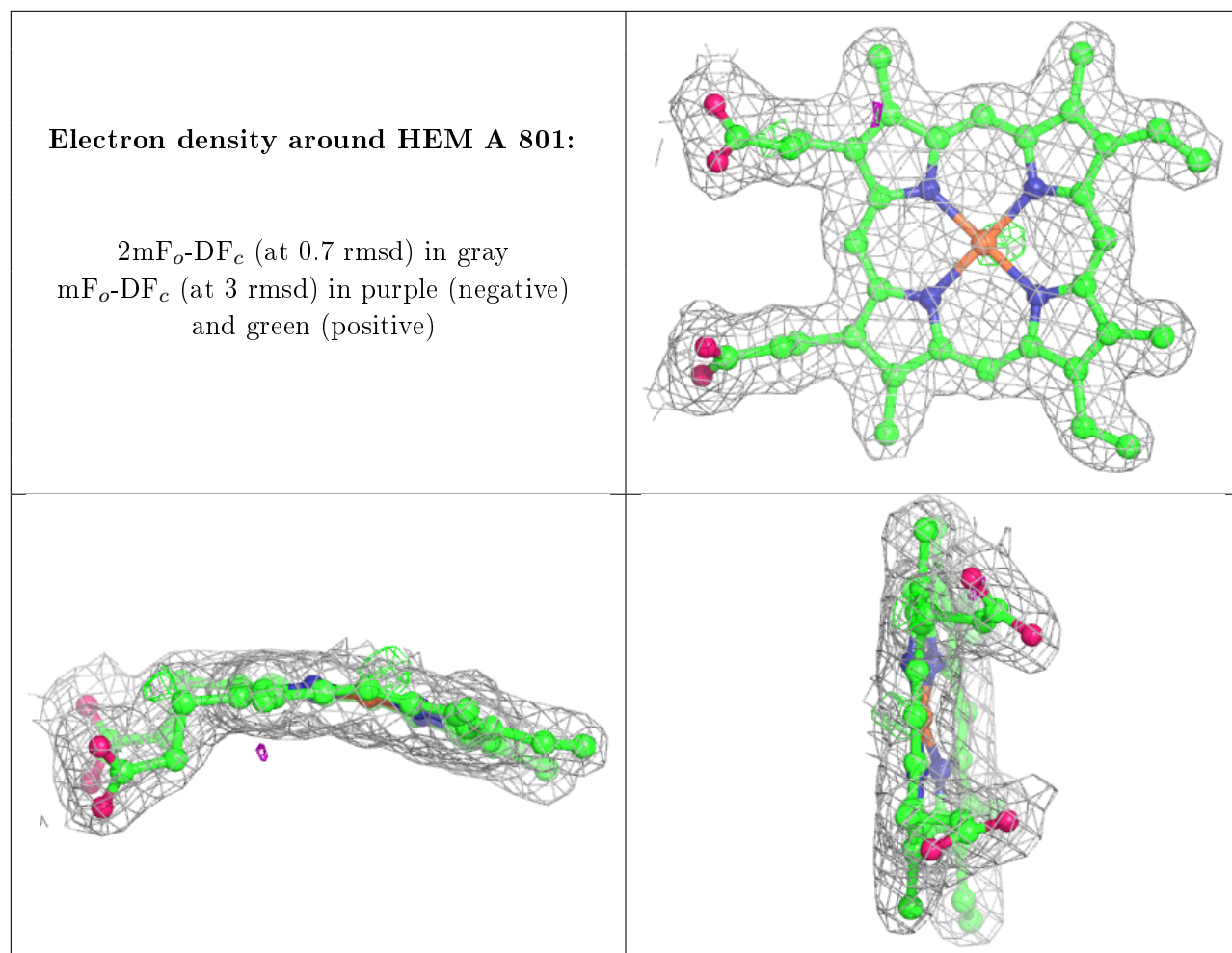
$2mF_o-DF_c$ (at 0.7 rmsd) in gray
 mF_o-DF_c (at 3 rmsd) in purple (negative)
and green (positive)



Electron density around HEM B 801:

$2mF_o-DF_c$ (at 0.7 rmsd) in gray
 mF_o-DF_c (at 3 rmsd) in purple (negative)
and green (positive)





6.5 Other polymers [i](#)

There are no such residues in this entry.