



Full wwPDB X-ray Structure Validation Report ⓘ

May 13, 2020 – 06:19 pm BST

PDB ID : 4K5J
Title : Structure of bovine endothelial nitric oxide synthase heme domain in complex with (S)-1,3-bis((2-amino-4-methylpyridin-6-yl)-methoxy)-butan-4-amine
Authors : Li, H.; Poulos, T.L.
Deposited on : 2013-04-14
Resolution : 2.36 Å(reported)

This is a Full wwPDB X-ray Structure Validation Report for a publicly released PDB entry.

We welcome your comments at validation@mail.wwpdb.org

A user guide is available at

<https://www.wwpdb.org/validation/2017/XrayValidationReportHelp>

with specific help available everywhere you see the ⓘ symbol.

The following versions of software and data (see [references ⓘ](#)) were used in the production of this report:

MolProbity : 4.02b-467
Mogul : 1.8.5 (274361), CSD as541be (2020)
Xtriage (Phenix) : 1.13
EDS : 2.11
buster-report : 1.1.7 (2018)
Percentile statistics : 20191225.v01 (using entries in the PDB archive December 25th 2019)
Refmac : 5.8.0158
CCP4 : 7.0.044 (Gargrove)
Ideal geometry (proteins) : Engh & Huber (2001)
Ideal geometry (DNA, RNA) : Parkinson et al. (1996)
Validation Pipeline (wwPDB-VP) : 2.11

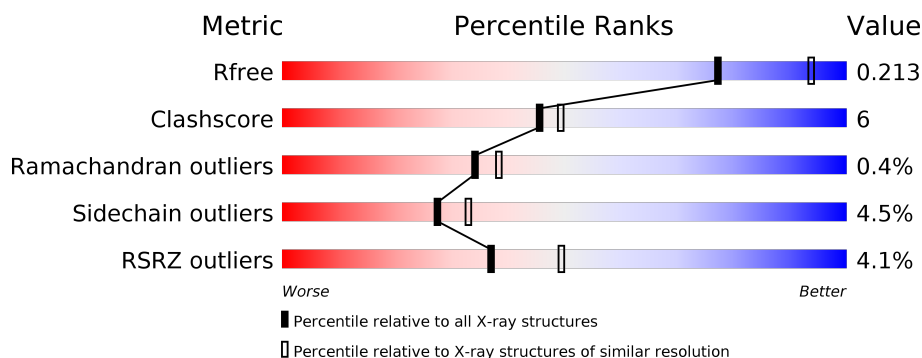
1 Overall quality at a glance

The following experimental techniques were used to determine the structure:

X-RAY DIFFRACTION

The reported resolution of this entry is 2.36 Å.

Percentile scores (ranging between 0-100) for global validation metrics of the entry are shown in the following graphic. The table shows the number of entries on which the scores are based.



Metric	Whole archive (#Entries)	Similar resolution (#Entries, resolution range(Å))
R_{free}	130704	1164 (2.36-2.36)
Clashscore	141614	1232 (2.36-2.36)
Ramachandran outliers	138981	1211 (2.36-2.36)
Sidechain outliers	138945	1212 (2.36-2.36)
RSRZ outliers	127900	1150 (2.36-2.36)

The table below summarises the geometric issues observed across the polymeric chains and their fit to the electron density. The red, orange, yellow and green segments on the lower bar indicate the fraction of residues that contain outliers for ≥ 3 , 2, 1 and 0 types of geometric quality criteria respectively. A grey segment represents the fraction of residues that are not modelled. The numeric value for each fraction is indicated below the corresponding segment, with a dot representing fractions $\leq 5\%$. The upper red bar (where present) indicates the fraction of residues that have poor fit to the electron density. The numeric value is given above the bar.

Mol	Chain	Length	Quality of chain
1	A	443	<div> <div>3%</div> <div> <div></div> <div>81%</div> <div>9%</div> <div>•</div> <div>9%</div> </div> </div>
1	B	443	<div> <div>5%</div> <div> <div></div> <div>77%</div> <div>12%</div> <div>•</div> <div>9%</div> </div> </div>

2 Entry composition [i](#)

There are 8 unique types of molecules in this entry. The entry contains 6834 atoms, of which 0 are hydrogens and 0 are deuteriums.

In the tables below, the ZeroOcc column contains the number of atoms modelled with zero occupancy, the AltConf column contains the number of residues with at least one atom in alternate conformation and the Trace column contains the number of residues modelled with at most 2 atoms.

- Molecule 1 is a protein called Nitric oxide synthase, endothelial.

Mol	Chain	Residues	Atoms						ZeroOcc	AltConf	Trace
1	A	404	Total	As	C	N	O	S	0	1	0
			3223	1	2049	568	589	16			
1	B	402	Total	As	C	N	O	S	0	1	0
			3209	1	2041	565	586	16			

There are 2 discrepancies between the modelled and reference sequences:

Chain	Residue	Modelled	Actual	Comment	Reference
A	100	ARG	CYS	CONFLICT	UNP P29473
B	100	ARG	CYS	CONFLICT	UNP P29473

- Molecule 2 is PROTOPORPHYRIN IX CONTAINING FE (three-letter code: HEM) (formula: $C_{34}H_{32}FeN_4O_4$).



Mol	Chain	Residues	Atoms					ZeroOcc	AltConf
2	A	1	Total	C	Fe	N	O	0	0
			43	34	1	4	4		

Continued on next page...

Continued from previous page...

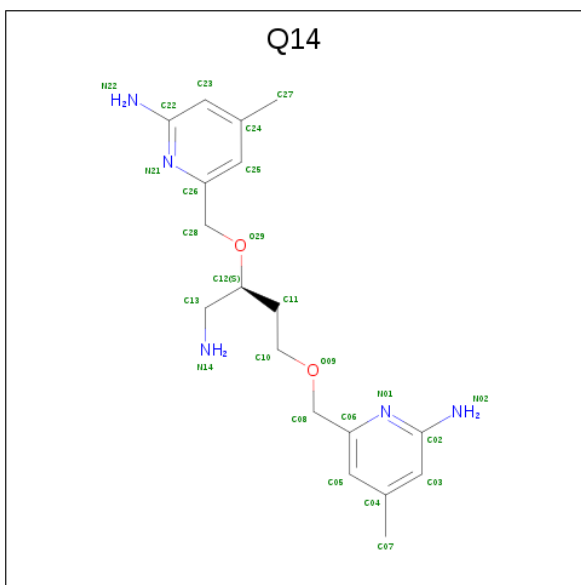
Mol	Chain	Residues	Atoms					ZeroOcc	AltConf
2	B	1	Total	C	Fe	N	O	0	0
			43	34	1	4	4		

- Molecule 3 is 5,6,7,8-TETRAHYDROBIOPTERIN (three-letter code: H4B) (formula: $C_9H_{15}N_5O_3$).



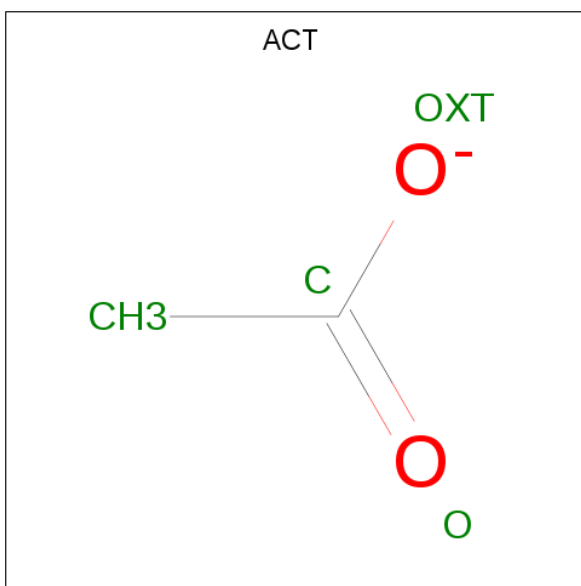
Mol	Chain	Residues	Atoms				ZeroOcc	AltConf
3	A	1	Total	C	N	O	0	0
			17	9	5	3		
3	B	1	Total	C	N	O	0	0
			17	9	5	3		

- Molecule 4 is 6-[(2S)-1-amino-4-[(6-amino-4-methylpyridin-2-yl)methoxy]butan-2-yl]oxy methyl]-4-methylpyridin-2-amine (three-letter code: Q14) (formula: $C_{18}H_{27}N_5O_2$).



Mol	Chain	Residues	Atoms				ZeroOcc	AltConf
4	A	1	Total 25	C 18	N 5	O 2	0	0
4	B	1	Total 25	C 18	N 5	O 2	0	0

- Molecule 5 is ACETATE ION (three-letter code: ACT) (formula: $\text{C}_2\text{H}_3\text{O}_2$).



Mol	Chain	Residues	Atoms	ZeroOcc	AltConf
5	A	1	Total C O 4 2 2	0	0
5	A	1	Total C O 4 2 2	0	0

Continued on next page...

Continued from previous page...

Mol	Chain	Residues	Atoms			ZeroOcc	AltConf
5	B	1	Total	C	O	0	0
			4	2	2		
5	B	1	Total	C	O	0	0
			4	2	2		

- Molecule 6 is GLYCEROL (three-letter code: GOL) (formula: $C_3H_8O_3$).



Mol	Chain	Residues	Atoms			ZeroOcc	AltConf
6	A	1	Total	C	O	0	0
			6	3	3		
6	B	1	Total	C	O	0	0
			6	3	3		

- Molecule 7 is ZINC ION (three-letter code: ZN) (formula: Zn).

Mol	Chain	Residues	Atoms		ZeroOcc	AltConf
7	A	1	Total	Zn	0	0
			1	1		

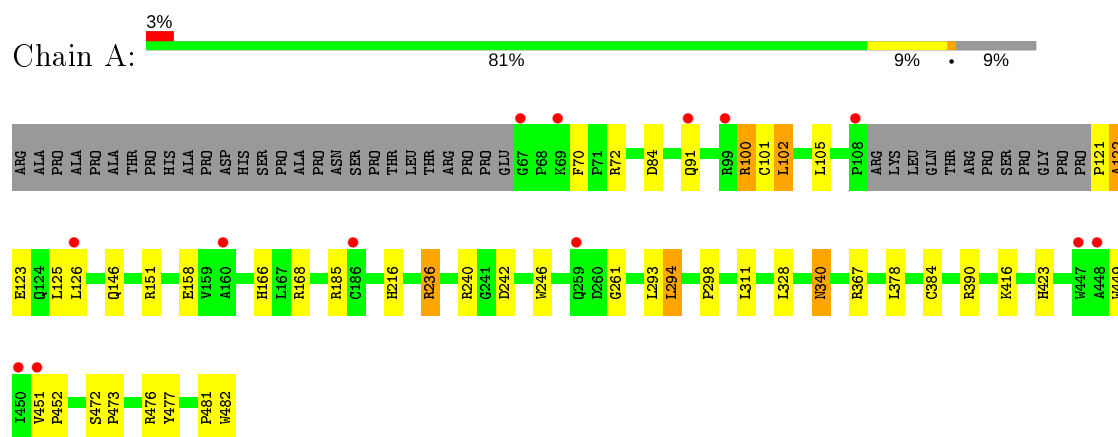
- Molecule 8 is water.

Mol	Chain	Residues	Atoms		ZeroOcc	AltConf
8	A	116	Total	O	0	0
			116	116		
8	B	87	Total	O	0	0
			87	87		

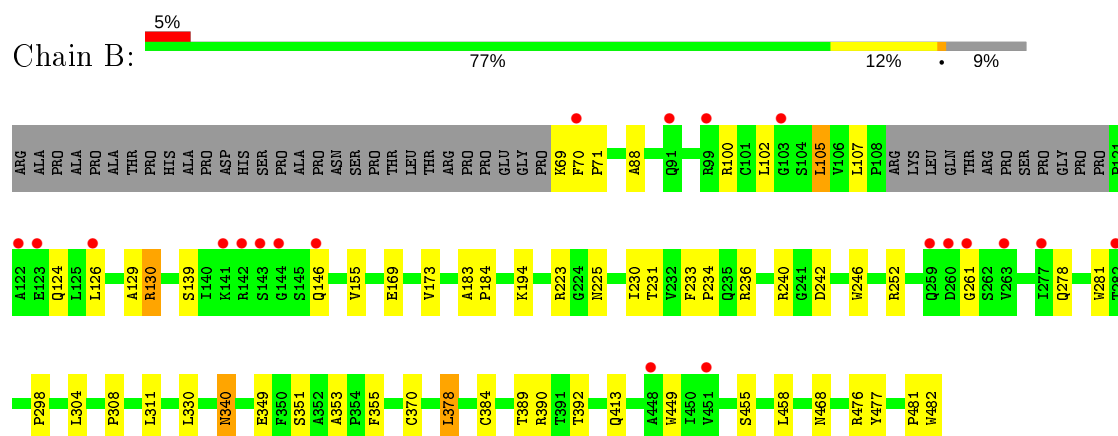
3 Residue-property plots [i](#)

These plots are drawn for all protein, RNA and DNA chains in the entry. The first graphic for a chain summarises the proportions of the various outlier classes displayed in the second graphic. The second graphic shows the sequence view annotated by issues in geometry and electron density. Residues are color-coded according to the number of geometric quality criteria for which they contain at least one outlier: green = 0, yellow = 1, orange = 2 and red = 3 or more. A red dot above a residue indicates a poor fit to the electron density ($RSRZ > 2$). Stretches of 2 or more consecutive residues without any outlier are shown as a green connector. Residues present in the sample, but not in the model, are shown in grey.

- Molecule 1: Nitric oxide synthase, endothelial



- Molecule 1: Nitric oxide synthase, endothelial



4 Data and refinement statistics

Property	Value	Source
Space group	P 21 21 21	Depositor
Cell constants a, b, c, α , β , γ	57.81Å 106.29Å 156.72Å 90.00° 90.00° 90.00°	Depositor
Resolution (Å)	46.93 – 2.36 46.88 – 2.36	Depositor EDS
% Data completeness (in resolution range)	97.8 (46.93-2.36) 97.9 (46.88-2.36)	Depositor EDS
R_{merge}	0.07	Depositor
R_{sym}	0.07	Depositor
$\langle I/\sigma(I) \rangle$ ¹	2.24 (at 2.37Å)	Xtriage
Refinement program	REFMAC	Depositor
R, R_{free}	0.161 , 0.214 0.161 , 0.213	Depositor DCC
R_{free} test set	1983 reflections (4.99%)	wwPDB-VP
Wilson B-factor (Å ²)	43.2	Xtriage
Anisotropy	0.424	Xtriage
Bulk solvent k_{sol} (e/Å ³), B_{sol} (Å ²)	0.35 , 32.6	EDS
L-test for twinning ²	$\langle L \rangle = 0.49$, $\langle L^2 \rangle = 0.32$	Xtriage
Estimated twinning fraction	No twinning to report.	Xtriage
F_o, F_c correlation	0.97	EDS
Total number of atoms	6834	wwPDB-VP
Average B, all atoms (Å ²)	50.0	wwPDB-VP

Xtriage's analysis on translational NCS is as follows: *The largest off-origin peak in the Patterson function is 3.31% of the height of the origin peak. No significant pseudotranslation is detected.*

¹Intensities estimated from amplitudes.

²Theoretical values of $\langle |L| \rangle$, $\langle L^2 \rangle$ for acentric reflections are 0.5, 0.333 respectively for untwinned datasets, and 0.375, 0.2 for perfectly twinned datasets.

5 Model quality [i](#)

5.1 Standard geometry [i](#)

Bond lengths and bond angles in the following residue types are not validated in this section: GOL, ZN, H4B, CAS, Q14, ACT, HEM

The Z score for a bond length (or angle) is the number of standard deviations the observed value is removed from the expected value. A bond length (or angle) with $|Z| > 5$ is considered an outlier worth inspection. RMSZ is the root-mean-square of all Z scores of the bond lengths (or angles).

Mol	Chain	Bond lengths		Bond angles	
		RMSZ	$\# Z > 5$	RMSZ	$\# Z > 5$
1	A	0.61	0/3303	0.74	0/4497
1	B	0.61	0/3291	0.73	1/4480 (0.0%)
All	All	0.61	0/6594	0.73	1/8977 (0.0%)

There are no bond length outliers.

All (1) bond angle outliers are listed below:

Mol	Chain	Res	Type	Atoms	Z	Observed(°)	Ideal(°)
1	B	252	ARG	NE-CZ-NH2	-5.77	117.41	120.30

There are no chirality outliers.

There are no planarity outliers.

5.2 Too-close contacts [i](#)

In the following table, the Non-H and H(model) columns list the number of non-hydrogen atoms and hydrogen atoms in the chain respectively. The H(added) column lists the number of hydrogen atoms added and optimized by MolProbity. The Clashes column lists the number of clashes within the asymmetric unit, whereas Symm-Clashes lists symmetry related clashes.

Mol	Chain	Non-H	H(model)	H(added)	Clashes	Symm-Clashes
1	A	3223	0	3126	37	0
1	B	3209	0	3117	37	0
2	A	43	0	30	3	0
2	B	43	0	30	8	0
3	A	17	0	15	2	0
3	B	17	0	15	1	0
4	A	25	0	27	5	0
4	B	25	0	27	7	0

Continued on next page...

Continued from previous page...

Mol	Chain	Non-H	H(model)	H(added)	Clashes	Symm-Clashes
5	A	8	0	6	0	0
5	B	8	0	6	0	0
6	A	6	0	8	0	0
6	B	6	0	8	0	0
7	A	1	0	0	0	0
8	A	116	0	0	3	0
8	B	87	0	0	2	0
All	All	6834	0	6415	83	0

The all-atom clashscore is defined as the number of clashes found per 1000 atoms (including hydrogen atoms). The all-atom clashscore for this structure is 6.

All (83) close contacts within the same asymmetric unit are listed below, sorted by their clash magnitude.

Atom-1	Atom-2	Interatomic distance (Å)	Clash overlap (Å)
1:A:384:CAS:AS	1:A:384:CAS:SG	2.59	1.20
1:B:384:CAS:AS	1:B:384:CAS:SG	2.60	1.20
1:A:236:ARG:HB2	1:A:236:ARG:HH11	1.08	1.11
1:A:236:ARG:CB	1:A:236:ARG:HH11	1.69	1.03
1:A:236:ARG:HB2	1:A:236:ARG:NH1	1.83	0.92
1:A:236:ARG:CG	1:A:236:ARG:HH11	1.92	0.82
1:A:240:ARG:HD3	1:A:298:PRO:HB3	1.65	0.77
2:B:501:HEM:HBA1	4:B:503:Q14:H20	1.67	0.75
1:B:107:LEU:HD21	4:B:503:Q14:H5	1.69	0.74
1:B:236:ARG:HD3	1:B:351:SER:HB3	1.71	0.73
2:B:501:HEM:HBC2	2:B:501:HEM:CMC	2.20	0.72
2:A:501:HEM:HBA2	4:A:503:Q14:H20	1.70	0.72
1:B:477:TYR:CE1	4:B:503:Q14:H4	2.24	0.71
1:A:340:ASN:HD22	1:A:340:ASN:H	1.40	0.68
2:B:501:HEM:C1C	4:B:503:Q14:H28	2.29	0.67
4:B:503:Q14:H12	8:B:654:HOH:O	1.94	0.67
1:A:384:CAS:CB	1:A:384:CAS:AS	3.04	0.66
1:A:158:GLU:OE1	1:A:166:HIS:HD2	1.79	0.64
1:B:240:ARG:HD3	1:B:298:PRO:HB3	1.81	0.63
1:B:236:ARG:HD2	1:B:242:ASP:OD1	1.99	0.63
2:B:501:HEM:HBC2	2:B:501:HEM:HMC1	1.83	0.59
1:A:246:TRP:HB2	1:A:294:LEU:HB3	1.83	0.59
1:B:390:ARG:NH1	1:B:390:ARG:HB2	2.18	0.59
2:A:501:HEM:HBA2	4:A:503:Q14:C08	2.35	0.57
1:A:236:ARG:HG3	1:A:242:ASP:OD1	2.05	0.56
1:A:384:CAS:HB2	1:A:384:CAS:AS	2.66	0.55

Continued on next page...

Continued from previous page...

Atom-1	Atom-2	Interatomic distance (Å)	Clash overlap (Å)
1:B:390:ARG:HH11	1:B:390:ARG:HB2	1.72	0.53
1:A:236:ARG:CG	1:A:236:ARG:NH1	2.61	0.51
1:B:455:SER:O	1:B:458:LEU:HB2	2.11	0.51
1:B:126:LEU:HG	1:B:130:ARG:HD2	1.92	0.50
1:B:370:CYS:SG	1:B:378:LEU:HD13	2.51	0.50
1:B:481:PRO:HD2	1:B:482:TRP:CE3	2.46	0.50
1:B:233:PHE:HB3	1:B:234:PRO:CD	2.40	0.50
1:B:281:TRP:HB2	1:B:304:LEU:HD21	1.92	0.50
1:A:240:ARG:HD3	1:A:298:PRO:CB	2.39	0.50
2:B:501:HEM:CBC	2:B:501:HEM:HMC1	2.42	0.50
1:A:449:TRP:HA	3:A:502:H4B:N1	2.27	0.50
1:A:423:HIS:HB2	1:B:392:THR:HB	1.94	0.49
1:B:349:GLU:OE2	1:B:476[A]:ARG:NH2	2.45	0.49
2:B:501:HEM:CBC	2:B:501:HEM:CMC	2.90	0.49
1:B:246:TRP:CD1	1:B:481:PRO:HG2	2.48	0.48
1:B:378:LEU:HB2	8:B:681:HOH:O	2.13	0.48
1:B:308:PRO:HD2	1:B:311:LEU:HD12	1.96	0.48
2:B:501:HEM:HBB2	2:B:501:HEM:HHC	1.95	0.47
4:A:503:Q14:H12	8:A:714:HOH:O	2.15	0.47
1:B:449:TRP:HA	3:B:502:H4B:N1	2.29	0.47
1:B:107:LEU:CD2	4:B:503:Q14:H5	2.43	0.47
1:A:477:TYR:CZ	4:A:503:Q14:H4	2.50	0.47
1:A:70:PHE:HB3	1:A:84:ASP:O	2.15	0.46
2:A:501:HEM:C1C	4:A:503:Q14:H28	2.51	0.46
1:A:101:CYS:HB3	1:B:468:ASN:HB3	1.97	0.45
1:A:481:PRO:HD2	1:A:482:TRP:CZ3	2.51	0.45
1:A:126:LEU:HA	1:A:126:LEU:HD12	1.71	0.45
1:A:384:CAS:SG	1:A:384:CAS:CE1	3.04	0.45
1:A:102:LEU:HD11	1:B:71:PRO:HB3	1.99	0.45
1:B:384:CAS:AS	1:B:384:CAS:CB	3.24	0.45
1:B:240:ARG:HD3	1:B:298:PRO:CB	2.47	0.44
1:B:146:GLN:HA	1:B:146:GLN:OE1	2.18	0.44
1:A:240:ARG:N	8:A:688:HOH:O	2.51	0.44
1:A:472:SER:HA	1:A:473:PRO:C	2.37	0.43
1:B:481:PRO:HD2	1:B:482:TRP:CZ3	2.53	0.43
1:A:340:ASN:ND2	1:A:340:ASN:H	2.10	0.43
1:A:236:ARG:NH1	1:A:236:ARG:CB	2.54	0.43
1:B:169:GLU:O	1:B:173:VAL:HG23	2.19	0.43
2:B:501:HEM:HBA1	4:B:503:Q14:C08	2.46	0.42
1:B:70:PHE:HE1	1:B:88:ALA:HB2	1.84	0.42
1:B:340:ASN:HD22	1:B:340:ASN:H	1.68	0.42

Continued on next page...

Continued from previous page...

Atom-1	Atom-2	Interatomic distance (Å)	Clash overlap (Å)
1:A:390:ARG:HE	1:A:390:ARG:HB2	1.47	0.42
1:A:216:HIS:C	1:A:216:HIS:CD2	2.93	0.42
1:B:231:THR:O	1:B:353:ALA:HA	2.19	0.41
1:B:230:ILE:HG13	1:B:355:PHE:HB3	2.00	0.41
1:B:129:ALA:HB1	1:B:155:VAL:HG11	2.01	0.41
1:A:100:ARG:NH1	1:A:102:LEU:HD22	2.36	0.41
1:A:72:ARG:O	1:B:105:LEU:HD11	2.21	0.41
1:B:183:ALA:HA	1:B:184:PRO:HD3	1.89	0.41
1:A:121:PRO:O	1:A:122:ALA:HB3	2.21	0.41
1:A:367:ARG:HH12	3:A:502:H4B:C4	2.34	0.41
1:A:185:ARG:HG2	1:A:449:TRP:CG	2.56	0.41
1:B:70:PHE:HA	1:B:71:PRO:HD2	1.91	0.41
1:A:151:ARG:HD3	1:A:168:ARG:NH1	2.37	0.40
1:B:236:ARG:HG3	1:B:349:GLU:HB2	2.03	0.40
1:A:378:LEU:HB2	8:A:612:HOH:O	2.22	0.40
1:A:451:VAL:HA	1:A:452:PRO:HD3	1.92	0.40

There are no symmetry-related clashes.

5.3 Torsion angles [i](#)

5.3.1 Protein backbone [i](#)

In the following table, the Percentiles column shows the percent Ramachandran outliers of the chain as a percentile score with respect to all X-ray entries followed by that with respect to entries of similar resolution.

The Analysed column shows the number of residues for which the backbone conformation was analysed, and the total number of residues.

Mol	Chain	Analysed	Favoured	Allowed	Outliers	Percentiles	
1	A	400/443 (90%)	390 (98%)	8 (2%)	2 (0%)	29	32
1	B	398/443 (90%)	382 (96%)	15 (4%)	1 (0%)	41	47
All	All	798/886 (90%)	772 (97%)	23 (3%)	3 (0%)	34	38

All (3) Ramachandran outliers are listed below:

Mol	Chain	Res	Type
1	A	122	ALA
1	B	261	GLY

Continued on next page...

Continued from previous page...

Mol	Chain	Res	Type
1	A	261	GLY

5.3.2 Protein sidechains ⓘ

In the following table, the Percentiles column shows the percent sidechain outliers of the chain as a percentile score with respect to all X-ray entries followed by that with respect to entries of similar resolution.

The Analysed column shows the number of residues for which the sidechain conformation was analysed, and the total number of residues.

Mol	Chain	Analysed	Rotameric	Outliers	Percentiles	
1	A	343/375 (92%)	328 (96%)	15 (4%)	28	34
1	B	342/375 (91%)	326 (95%)	16 (5%)	26	31
All	All	685/750 (91%)	654 (96%)	31 (4%)	27	33

All (31) residues with a non-rotameric sidechain are listed below:

Mol	Chain	Res	Type
1	A	91	GLN
1	A	100	ARG
1	A	102	LEU
1	A	105	LEU
1	A	123	GLU
1	A	125	LEU
1	A	146	GLN
1	A	236	ARG
1	A	293	LEU
1	A	294	LEU
1	A	311	LEU
1	A	328	LEU
1	A	340	ASN
1	A	416	LYS
1	A	476	ARG
1	B	69	LYS
1	B	100	ARG
1	B	102	LEU
1	B	105	LEU
1	B	124	GLN
1	B	130	ARG
1	B	139	SER

Continued on next page...

Continued from previous page...

Mol	Chain	Res	Type
1	B	194	LYS
1	B	223	ARG
1	B	225	ASN
1	B	278	GLN
1	B	330	LEU
1	B	340	ASN
1	B	378	LEU
1	B	389	THR
1	B	413	GLN

Some sidechains can be flipped to improve hydrogen bonding and reduce clashes. All (15) such sidechains are listed below:

Mol	Chain	Res	Type
1	A	91	GLN
1	A	166	HIS
1	A	191	GLN
1	A	340	ASN
1	A	376	ASN
1	A	413	GLN
1	A	468	ASN
1	B	178	GLN
1	B	191	GLN
1	B	222	ASN
1	B	225	ASN
1	B	259	GLN
1	B	340	ASN
1	B	376	ASN
1	B	405	ASN

5.3.3 RNA ⓘ

There are no RNA molecules in this entry.

5.4 Non-standard residues in protein, DNA, RNA chains ⓘ

2 non-standard protein/DNA/RNA residues are modelled in this entry.

In the following table, the Counts columns list the number of bonds (or angles) for which Mogul statistics could be retrieved, the number of bonds (or angles) that are observed in the model and the number of bonds (or angles) that are defined in the Chemical Component Dictionary. The Link column lists molecule types, if any, to which the group is linked. The Z score for a bond

length (or angle) is the number of standard deviations the observed value is removed from the expected value. A bond length (or angle) with $|Z| > 2$ is considered an outlier worth inspection. RMSZ is the root-mean-square of all Z scores of the bond lengths (or angles).

Mol	Type	Chain	Res	Link	Bond lengths			Bond angles		
					Counts	RMSZ	$\# Z > 2$	Counts	RMSZ	$\# Z > 2$
1	CAS	A	384	1	5,8,9	1.13	1 (20%)	1,9,11	0.71	0
1	CAS	B	384	1	5,8,9	1.47	1 (20%)	1,9,11	0.57	0

In the following table, the Chirals column lists the number of chiral outliers, the number of chiral centers analysed, the number of these observed in the model and the number defined in the Chemical Component Dictionary. Similar counts are reported in the Torsion and Rings columns. '-' means no outliers of that kind were identified.

Mol	Type	Chain	Res	Link	Chirals	Torsions	Rings
1	CAS	A	384	1	-	0/0/7/9	-
1	CAS	B	384	1	-	0/0/7/9	-

All (2) bond length outliers are listed below:

Mol	Chain	Res	Type	Atoms	Z	Observed(Å)	Ideal(Å)
1	B	384	CAS	AS-CE2	2.31	2.02	1.96
1	A	384	CAS	AS-CE2	2.11	2.01	1.96

There are no bond angle outliers.

There are no chirality outliers.

There are no torsion outliers.

There are no ring outliers.

2 monomers are involved in 6 short contacts:

Mol	Chain	Res	Type	Clashes	Symm-Clashes
1	A	384	CAS	4	0
1	B	384	CAS	2	0

5.5 Carbohydrates [i](#)

There are no carbohydrates in this entry.

5.6 Ligand geometry [i](#)

Of 13 ligands modelled in this entry, 1 is monoatomic - leaving 12 for Mogul analysis.

In the following table, the Counts columns list the number of bonds (or angles) for which Mogul statistics could be retrieved, the number of bonds (or angles) that are observed in the model and the number of bonds (or angles) that are defined in the Chemical Component Dictionary. The Link column lists molecule types, if any, to which the group is linked. The Z score for a bond length (or angle) is the number of standard deviations the observed value is removed from the expected value. A bond length (or angle) with $|Z| > 2$ is considered an outlier worth inspection. RMSZ is the root-mean-square of all Z scores of the bond lengths (or angles).

Mol	Type	Chain	Res	Link	Bond lengths			Bond angles		
					Counts	RMSZ	$\# Z > 2$	Counts	RMSZ	$\# Z > 2$
5	ACT	A	505	-	1,3,3	2.32	1 (100%)	0,3,3	0.00	-
5	ACT	B	504	-	1,3,3	1.88	0	0,3,3	0.00	-
2	HEM	A	501	1	27,50,50	0.89	1 (3%)	17,82,82	1.92	4 (23%)
3	H4B	A	502	-	16,18,18	1.11	2 (12%)	11,26,26	3.01	8 (72%)
6	GOL	A	506	-	5,5,5	0.61	0	5,5,5	0.86	0
4	Q14	A	503	-	25,26,26	0.82	0	30,34,34	1.82	9 (30%)
4	Q14	B	503	-	25,26,26	0.56	0	30,34,34	2.27	13 (43%)
3	H4B	B	502	-	16,18,18	0.97	0	11,26,26	2.59	6 (54%)
5	ACT	A	504	-	1,3,3	1.63	0	0,3,3	0.00	-
6	GOL	B	506	-	5,5,5	0.36	0	5,5,5	0.44	0
2	HEM	B	501	1	27,50,50	0.97	2 (7%)	17,82,82	1.17	1 (5%)
5	ACT	B	505	-	1,3,3	2.48	1 (100%)	0,3,3	0.00	-

In the following table, the Chirals column lists the number of chiral outliers, the number of chiral centers analysed, the number of these observed in the model and the number defined in the Chemical Component Dictionary. Similar counts are reported in the Torsion and Rings columns. '-' means no outliers of that kind were identified.

Mol	Type	Chain	Res	Link	Chirals	Torsions	Rings
2	HEM	A	501	1	-	0/6/54/54	-
3	H4B	A	502	-	-	0/8/17/17	0/2/2/2
6	GOL	A	506	-	-	2/4/4/4	-
4	Q14	A	503	-	-	7/14/14/14	0/2/2/2
4	Q14	B	503	-	-	7/14/14/14	0/2/2/2
6	GOL	B	506	-	-	0/4/4/4	-
2	HEM	B	501	1	-	3/6/54/54	-
3	H4B	B	502	-	-	0/8/17/17	0/2/2/2

All (7) bond length outliers are listed below:

Mol	Chain	Res	Type	Atoms	Z	Observed(Å)	Ideal(Å)
2	B	501	HEM	C4D-C3D	2.78	1.48	1.42

Continued on next page...

Continued from previous page...

Mol	Chain	Res	Type	Atoms	Z	Observed(Å)	Ideal(Å)
5	B	505	ACT	CH3-C	2.48	1.51	1.48
2	A	501	HEM	C4D-C3D	2.43	1.48	1.42
2	B	501	HEM	C3B-C2B	-2.36	1.37	1.40
5	A	505	ACT	CH3-C	2.32	1.51	1.48
3	A	502	H4B	C4-C4A	-2.07	1.38	1.41
3	A	502	H4B	C4-N3	2.06	1.36	1.33

All (41) bond angle outliers are listed below:

Mol	Chain	Res	Type	Atoms	Z	Observed(°)	Ideal(°)
4	B	503	Q14	C02-N01-C06	5.67	122.40	118.10
2	A	501	HEM	CBA-CAA-C2A	-5.51	102.32	112.49
4	B	503	Q14	C22-N21-C26	4.75	121.70	118.10
3	A	502	H4B	C4-N3-C2	4.72	123.43	115.93
3	B	502	H4B	C4-C4A-C8A	4.60	118.65	114.57
3	A	502	H4B	C4-C4A-C8A	4.51	118.57	114.57
3	A	502	H4B	N3-C2-N1	-4.48	118.40	125.42
4	A	503	Q14	C22-N21-C26	4.31	121.36	118.10
4	B	503	Q14	C10-C11-C12	-3.65	104.41	113.51
3	B	502	H4B	N3-C2-N1	-3.63	119.72	125.42
3	A	502	H4B	C4-C4A-N5	3.53	122.08	119.12
3	B	502	H4B	C4-C4A-N5	3.45	122.01	119.12
4	A	503	Q14	O09-C08-C06	3.36	120.52	110.94
4	A	503	Q14	C02-N01-C06	3.16	120.50	118.10
4	B	503	Q14	C08-O09-C10	-3.11	103.10	112.86
3	B	502	H4B	C4-N3-C2	3.01	120.72	115.93
4	B	503	Q14	C28-O29-C12	2.87	118.97	113.78
4	B	503	Q14	O09-C08-C06	2.87	119.11	110.94
4	A	503	Q14	O29-C12-C13	2.87	114.48	107.69
4	B	503	Q14	C25-C26-N21	-2.87	119.86	122.90
4	B	503	Q14	C04-C05-C06	-2.87	118.44	120.32
4	A	503	Q14	C25-C26-N21	-2.86	119.86	122.90
2	B	501	HEM	C1D-C2D-C3D	-2.78	105.06	107.00
4	A	503	Q14	N22-C22-N21	2.75	120.83	116.49
3	B	502	H4B	C2-N1-C8A	2.74	120.68	114.54
3	A	502	H4B	C2-N1-C8A	2.73	120.66	114.54
4	A	503	Q14	C10-C11-C12	-2.66	106.89	113.51
4	A	503	Q14	C05-C06-N01	-2.50	120.25	122.90
2	A	501	HEM	C1D-C2D-C3D	-2.38	105.34	107.00
3	A	502	H4B	N2-C2-N3	2.35	120.91	117.25
4	B	503	Q14	C05-C06-N01	-2.32	120.44	122.90
2	A	501	HEM	CAA-CBA-CGA	2.30	116.52	112.67

Continued on next page...

Continued from previous page...

Mol	Chain	Res	Type	Atoms	Z	Observed(°)	Ideal(°)
4	B	503	Q14	O29-C12-C13	2.22	112.96	107.69
3	A	502	H4B	N2-C2-N1	2.21	120.69	117.25
3	A	502	H4B	C4A-C4-N3	-2.20	117.77	124.01
4	B	503	Q14	O09-C10-C11	2.11	117.79	109.78
2	A	501	HEM	CMB-C2B-C3B	2.09	128.58	124.68
4	B	503	Q14	C24-C25-C26	-2.03	118.99	120.32
4	A	503	Q14	C28-O29-C12	2.02	117.44	113.78
3	B	502	H4B	N2-C2-N1	2.01	120.38	117.25
4	B	503	Q14	N22-C22-N21	2.01	119.66	116.49

There are no chirality outliers.

All (19) torsion outliers are listed below:

Mol	Chain	Res	Type	Atoms
6	A	506	GOL	C1-C2-C3-O3
4	A	503	Q14	O29-C12-C13-N14
4	A	503	Q14	C11-C12-C13-N14
4	B	503	Q14	O29-C12-C13-N14
4	B	503	Q14	C11-C12-C13-N14
2	B	501	HEM	C2A-CAA-CBA-CGA
4	A	503	Q14	C10-C11-C12-O29
6	A	506	GOL	O2-C2-C3-O3
4	B	503	Q14	C10-C11-C12-O29
4	B	503	Q14	C06-C08-O09-C10
4	A	503	Q14	C06-C08-O09-C10
4	A	503	Q14	C10-C11-C12-C13
4	A	503	Q14	C26-C28-O29-C12
4	B	503	Q14	C26-C28-O29-C12
4	B	503	Q14	C10-C11-C12-C13
2	B	501	HEM	C1A-C2A-CAA-CBA
2	B	501	HEM	C3A-C2A-CAA-CBA
4	B	503	Q14	C11-C10-O09-C08
4	A	503	Q14	C11-C10-O09-C08

There are no ring outliers.

6 monomers are involved in 20 short contacts:

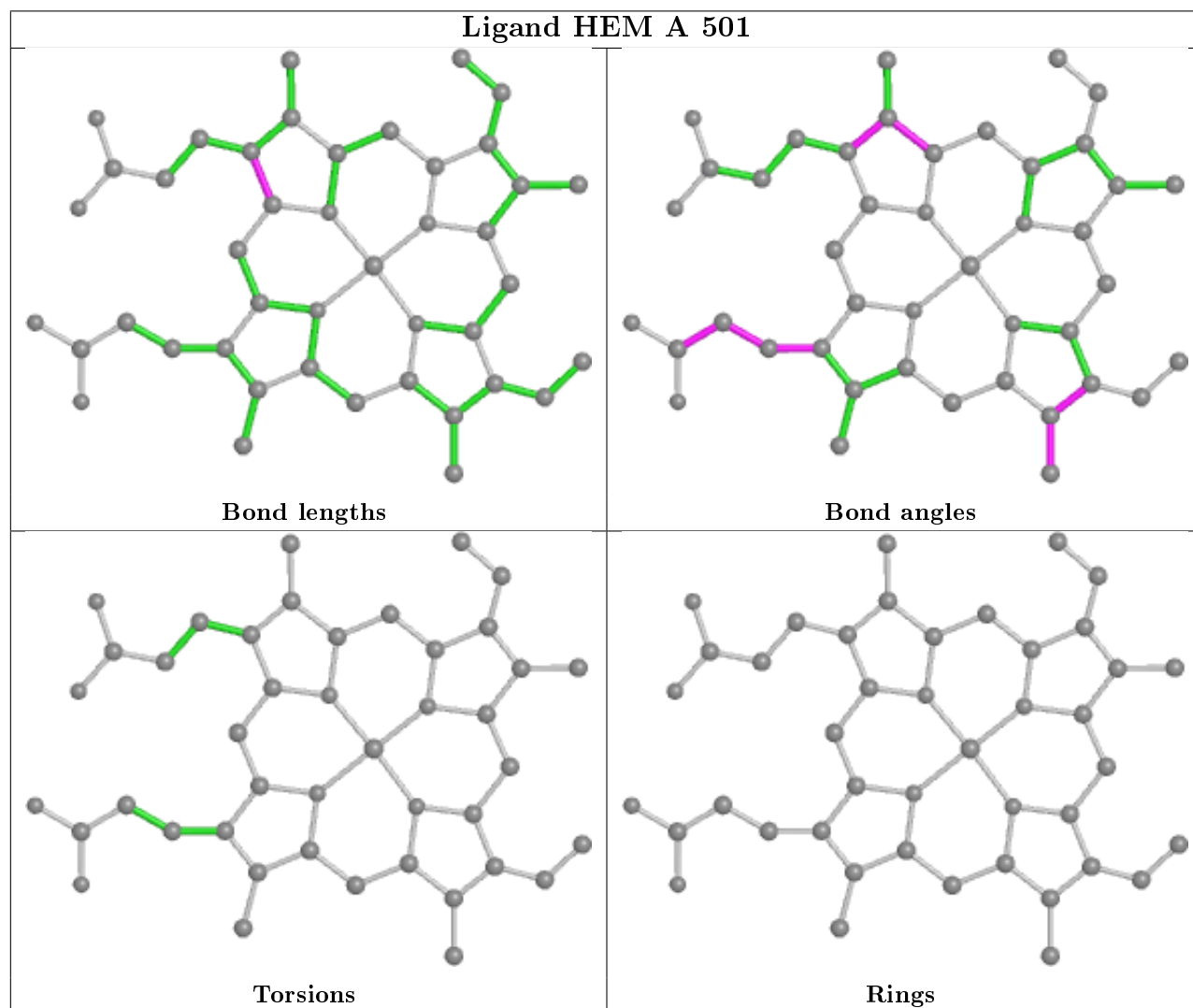
Mol	Chain	Res	Type	Clashes	Symm-Clashes
2	A	501	HEM	3	0
3	A	502	H4B	2	0
4	A	503	Q14	5	0

Continued on next page...

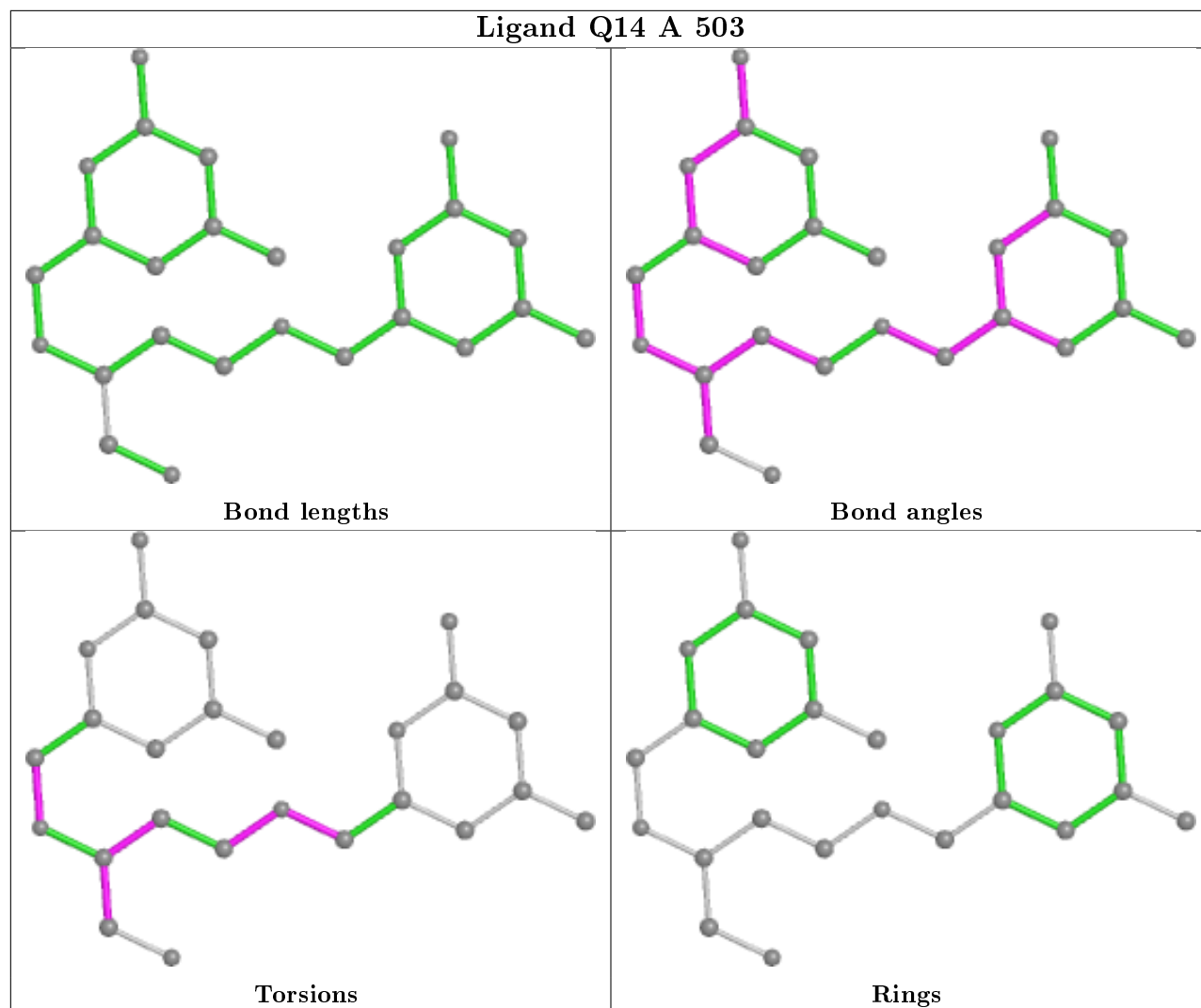
Continued from previous page...

Mol	Chain	Res	Type	Clashes	Symm-Clashes
4	B	503	Q14	7	0
3	B	502	H4B	1	0
2	B	501	HEM	8	0

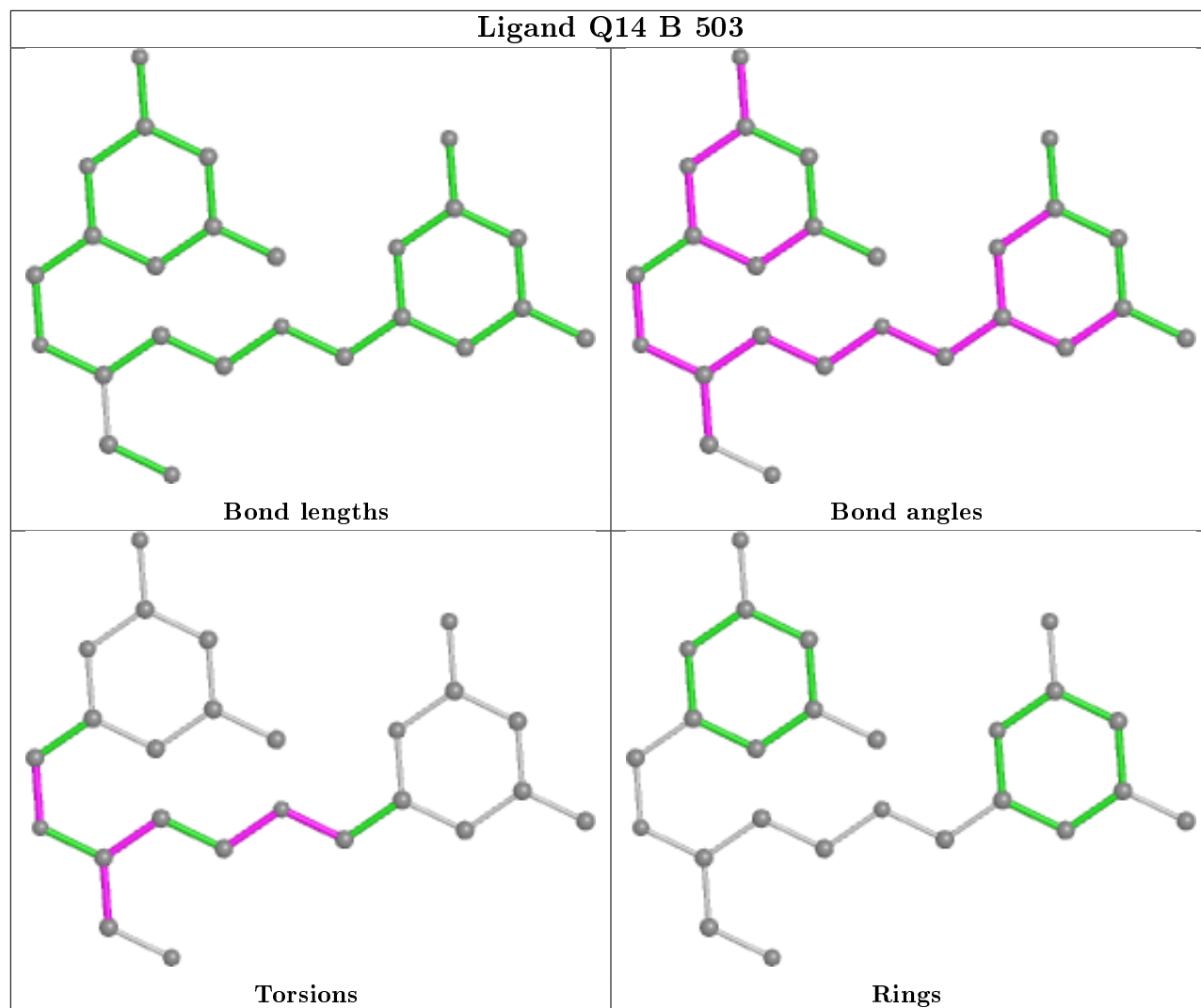
The following is a two-dimensional graphical depiction of Mogul quality analysis of bond lengths, bond angles, torsion angles, and ring geometry for all instances of the Ligand of Interest. In addition, ligands with molecular weight > 250 and outliers as shown on the validation Tables will also be included. For torsion angles, if less than 5% of the Mogul distribution of torsion angles is within 10 degrees of the torsion angle in question, then that torsion angle is considered an outlier. Any bond that is central to one or more torsion angles identified as an outlier by Mogul will be highlighted in the graph. For rings, the root-mean-square deviation (RMSD) between the ring in question and similar rings identified by Mogul is calculated over all ring torsion angles. If the average RMSD is greater than 60 degrees and the minimal RMSD between the ring in question and any Mogul-identified rings is also greater than 60 degrees, then that ring is considered an outlier. The outliers are highlighted in purple. The color gray indicates Mogul did not find sufficient equivalents in the CSD to analyse the geometry.

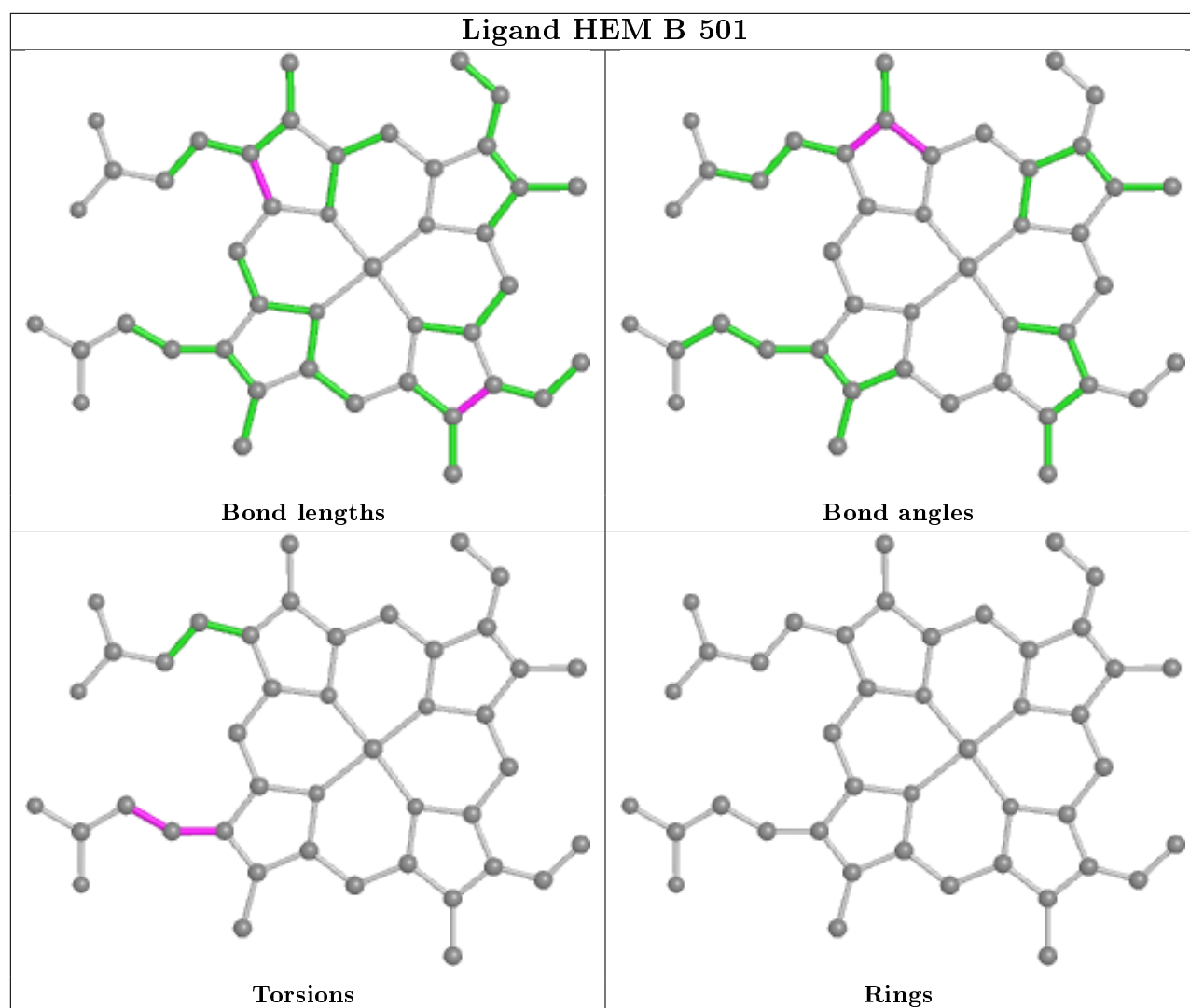


Ligand Q14 A 503



Ligand Q14 B 503





5.7 Other polymers [i](#)

There are no such residues in this entry.

5.8 Polymer linkage issues [i](#)

There are no chain breaks in this entry.

6 Fit of model and data ⓘ

6.1 Protein, DNA and RNA chains ⓘ

In the following table, the column labelled ‘#RSRZ> 2’ contains the number (and percentage) of RSRZ outliers, followed by percent RSRZ outliers for the chain as percentile scores relative to all X-ray entries and entries of similar resolution. The OWAB column contains the minimum, median, 95th percentile and maximum values of the occupancy-weighted average B-factor per residue. The column labelled ‘Q< 0.9’ lists the number of (and percentage) of residues with an average occupancy less than 0.9.

Mol	Chain	Analysed	<RSRZ>	#RSRZ>2	OWAB(Å ²)	Q<0.9
1	A	403/443 (90%)	0.02	13 (3%) 47 59	30, 43, 82, 128	0
1	B	401/443 (90%)	0.09	20 (4%) 28 41	31, 47, 86, 111	0
All	All	804/886 (90%)	0.05	33 (4%) 37 49	30, 45, 84, 128	0

All (33) RSRZ outliers are listed below:

Mol	Chain	Res	Type	RSRZ
1	A	108	PRO	5.9
1	B	144	GLY	5.3
1	B	259	GLN	4.3
1	B	141	LYS	4.2
1	B	122	ALA	3.8
1	B	142	ARG	3.3
1	B	261	GLY	3.3
1	A	99	ARG	3.3
1	B	123	GLU	3.1
1	A	67	GLY	3.1
1	A	91	GLN	3.0
1	B	143	SER	3.0
1	B	103	GLY	2.9
1	A	259	GLN	2.7
1	A	126	LEU	2.7
1	A	450	ILE	2.5
1	B	146	GLN	2.5
1	A	69	LYS	2.5
1	A	160	ALA	2.4
1	B	263	VAL	2.3
1	B	451	VAL	2.3
1	A	186	CYS	2.3
1	B	277	ILE	2.3
1	B	126	LEU	2.3

Continued on next page...

Continued from previous page...

Mol	Chain	Res	Type	RSRZ
1	B	91	GLN	2.3
1	A	451	VAL	2.3
1	A	447	TRP	2.1
1	B	70	PHE	2.1
1	B	260	ASP	2.1
1	A	448	ALA	2.1
1	B	448	ALA	2.1
1	B	282	THR	2.0
1	B	99	ARG	2.0

6.2 Non-standard residues in protein, DNA, RNA chains [i](#)

In the following table, the Atoms column lists the number of modelled atoms in the group and the number defined in the chemical component dictionary. The B-factors column lists the minimum, median, 95th percentile and maximum values of B factors of atoms in the group. The column labelled 'Q< 0.9' lists the number of atoms with occupancy less than 0.9.

Mol	Type	Chain	Res	Atoms	RSCC	RSR	B-factors(Å ²)	Q<0.9
1	CAS	A	384	9/10	0.98	0.11	42,43,61,71	0
1	CAS	B	384	9/10	0.98	0.08	54,56,66,81	0

6.3 Carbohydrates [i](#)

There are no carbohydrates in this entry.

6.4 Ligands [i](#)

In the following table, the Atoms column lists the number of modelled atoms in the group and the number defined in the chemical component dictionary. The B-factors column lists the minimum, median, 95th percentile and maximum values of B factors of atoms in the group. The column labelled 'Q< 0.9' lists the number of atoms with occupancy less than 0.9.

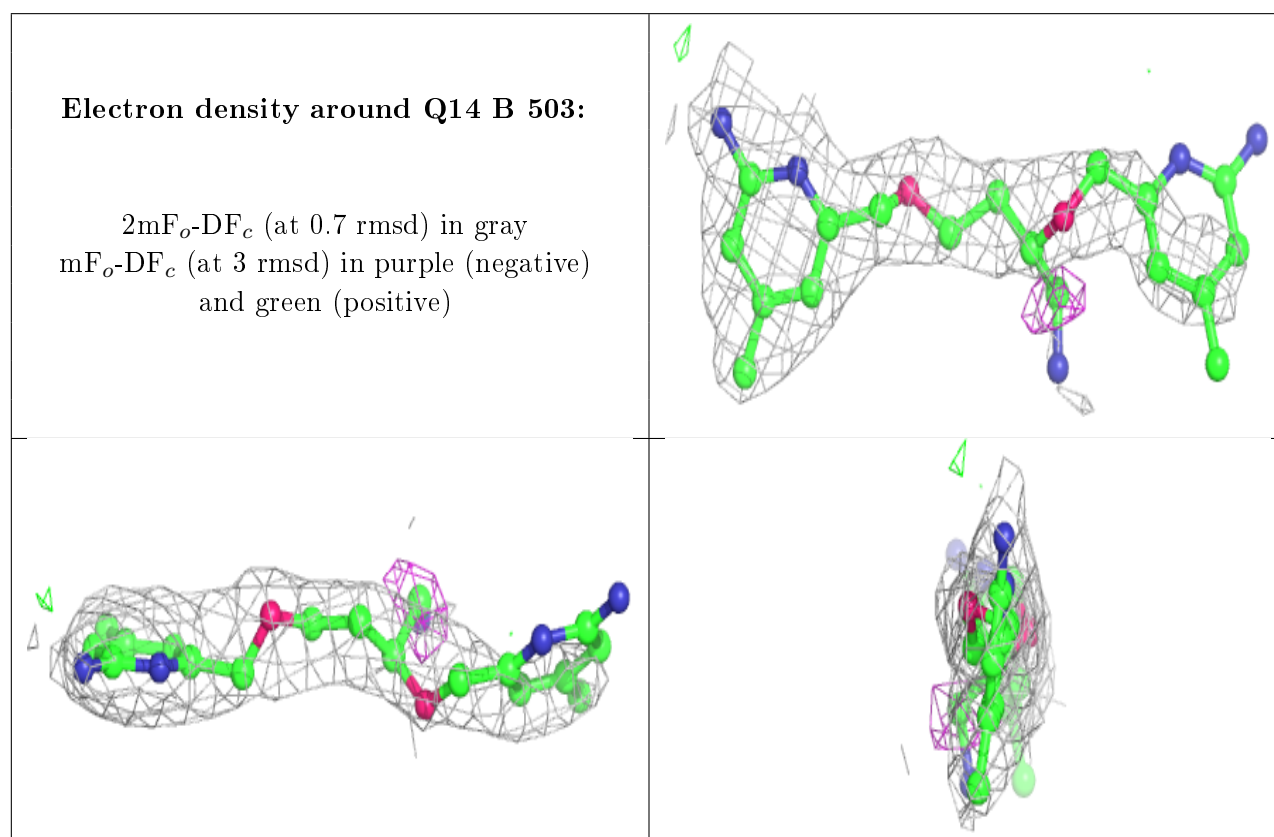
Mol	Type	Chain	Res	Atoms	RSCC	RSR	B-factors(Å ²)	Q<0.9
6	GOL	A	506	6/6	0.84	0.20	56,77,78,79	0
6	GOL	B	506	6/6	0.90	0.21	55,71,77,82	0
4	Q14	B	503	25/25	0.92	0.29	42,65,141,145	0
5	ACT	B	505	4/4	0.93	0.22	60,71,74,76	0
4	Q14	A	503	25/25	0.94	0.25	33,62,146,149	0
5	ACT	A	505	4/4	0.95	0.12	51,55,56,59	0
5	ACT	B	504	4/4	0.95	0.13	57,58,64,64	0

Continued on next page...

Continued from previous page...

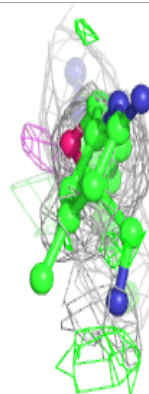
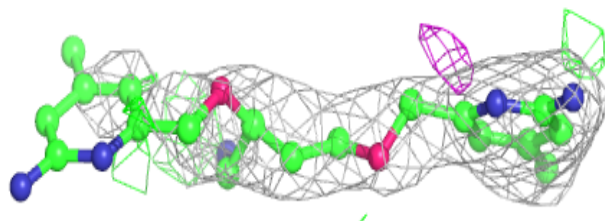
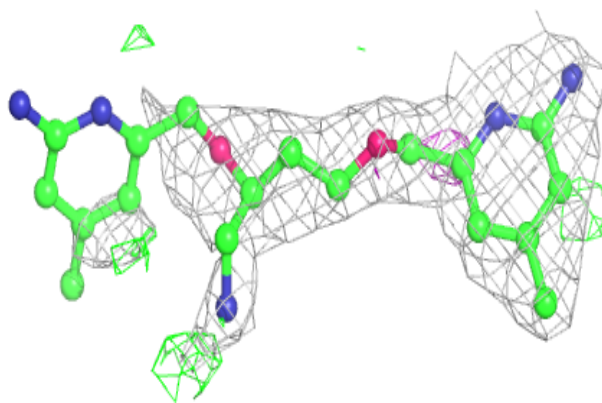
Mol	Type	Chain	Res	Atoms	RSCC	RSR	B-factors(\AA^2)	Q<0.9
3	H4B	B	502	17/17	0.97	0.19	41,50,53,58	0
3	H4B	A	502	17/17	0.97	0.17	41,49,51,51	0
2	HEM	A	501	43/43	0.98	0.17	29,34,51,56	0
5	ACT	A	504	4/4	0.98	0.10	53,53,54,54	0
2	HEM	B	501	43/43	0.99	0.16	29,35,53,57	0
7	ZN	A	507	1/1	0.99	0.09	63,63,63,63	0

The following is a graphical depiction of the model fit to experimental electron density of all instances of the Ligand of Interest. In addition, ligands with molecular weight > 250 and outliers as shown on the geometry validation Tables will also be included. Each fit is shown from different orientation to approximate a three-dimensional view.



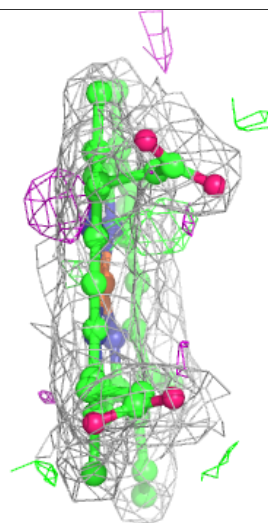
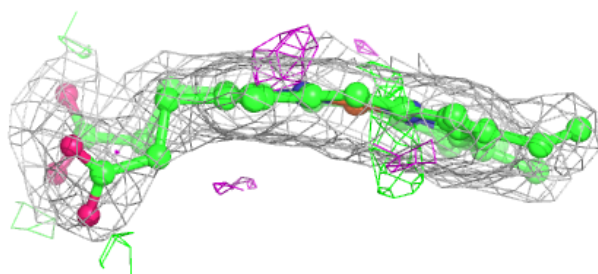
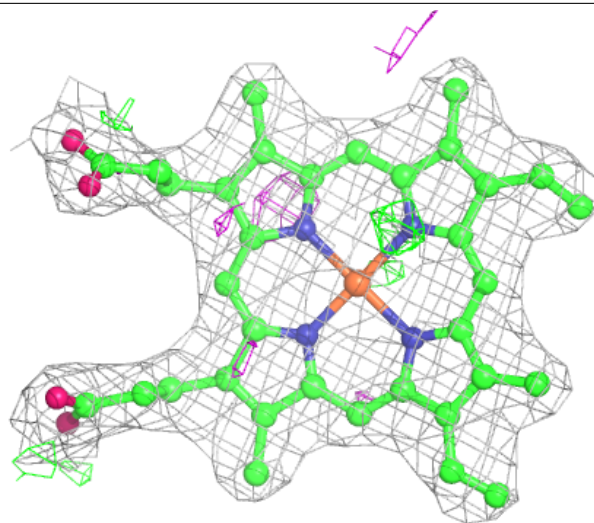
Electron density around Q14 A 503:

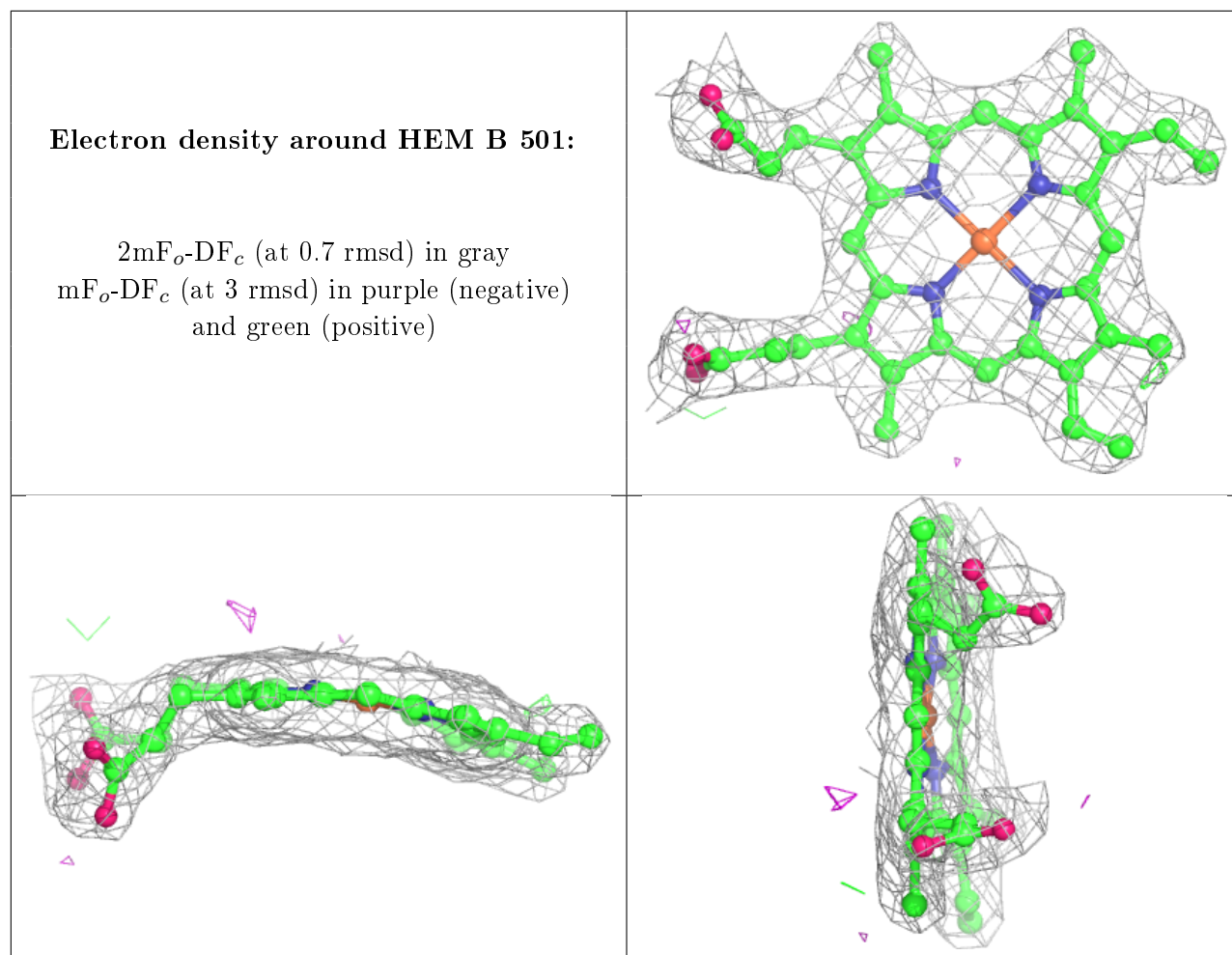
$2mF_o-DF_c$ (at 0.7 rmsd) in gray
 mF_o-DF_c (at 3 rmsd) in purple (negative)
and green (positive)



Electron density around HEM A 501:

$2mF_o-DF_c$ (at 0.7 rmsd) in gray
 mF_o-DF_c (at 3 rmsd) in purple (negative)
and green (positive)





6.5 Other polymers [i](#)

There are no such residues in this entry.