



Full wwPDB EM Validation Report ⓘ

Nov 15, 2022 – 04:04 AM JST

PDB ID : 6K9L
EMDB ID : EMD-9950
Title : 4.27 Angstrom resolution cryo-EM structure of human dimeric ATM kinase
Authors : Xiao, J.; Liu, M.; Qi, Y.; Chaban, Y.; Gao, C.; Tian, Y.; Yu, Z.; Li, J.; Zhang, P.; Xu, Y.
Deposited on : 2019-06-16
Resolution : 4.27 Å(reported)

This is a Full wwPDB EM Validation Report for a publicly released PDB entry.

We welcome your comments at validation@mail.wwpdb.org

A user guide is available at

<https://www.wwpdb.org/validation/2017/EMValidationReportHelp>
with specific help available everywhere you see the ⓘ symbol.

The types of validation reports are described at

<http://www.wwpdb.org/validation/2017/FAQs#types>.

The following versions of software and data (see [references ⓘ](#)) were used in the production of this report:

EMDB validation analysis : 0.0.1.dev43
MolProbity : 4.02b-467
Percentile statistics : 20191225.v01 (using entries in the PDB archive December 25th 2019)
MapQ : 1.9.9
Ideal geometry (proteins) : Engh & Huber (2001)
Ideal geometry (DNA, RNA) : Parkinson et al. (1996)
Validation Pipeline (wwPDB-VP) : 2.31.2

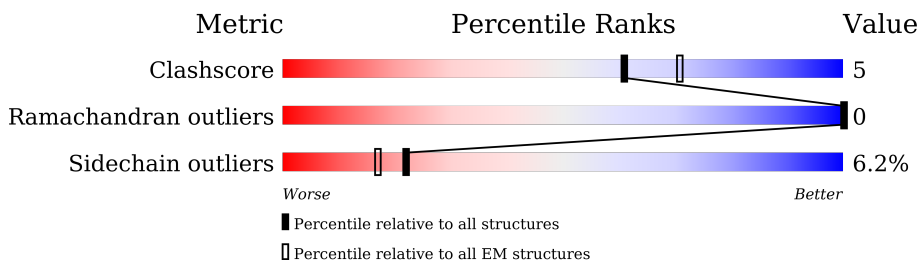
1 Overall quality at a glance

The following experimental techniques were used to determine the structure:

ELECTRON MICROSCOPY

The reported resolution of this entry is 4.27 Å.

Percentile scores (ranging between 0-100) for global validation metrics of the entry are shown in the following graphic. The table shows the number of entries on which the scores are based.



Metric	Whole archive (#Entries)	EM structures (#Entries)
Clashscore	158937	4297
Ramachandran outliers	154571	4023
Sidechain outliers	154315	3826

The table below summarises the geometric issues observed across the polymeric chains and their fit to the map. The red, orange, yellow and green segments of the bar indicate the fraction of residues that contain outliers for ≥ 3 , 2, 1 and 0 types of geometric quality criteria respectively. A grey segment represents the fraction of residues that are not modelled. The numeric value for each fraction is indicated below the corresponding segment, with a dot representing fractions $\leq 5\%$. The upper red bar (where present) indicates the fraction of residues that have poor fit to the EM map (all-atom inclusion $< 40\%$). The numeric value is given above the bar.

Mol	Chain	Length	Quality of chain
1	A	3056	<div> <div>19%</div> <div>76%</div> <div>7%</div> <div>16%</div> </div>
1	B	3056	<div> <div>18%</div> <div>76%</div> <div>7%</div> <div>17%</div> </div>

2 Entry composition

There is only 1 type of molecule in this entry. The entry contains 30601 atoms, of which 0 are hydrogens and 0 are deuteriums.

In the tables below, the AltConf column contains the number of residues with at least one atom in alternate conformation and the Trace column contains the number of residues modelled with at most 2 atoms.

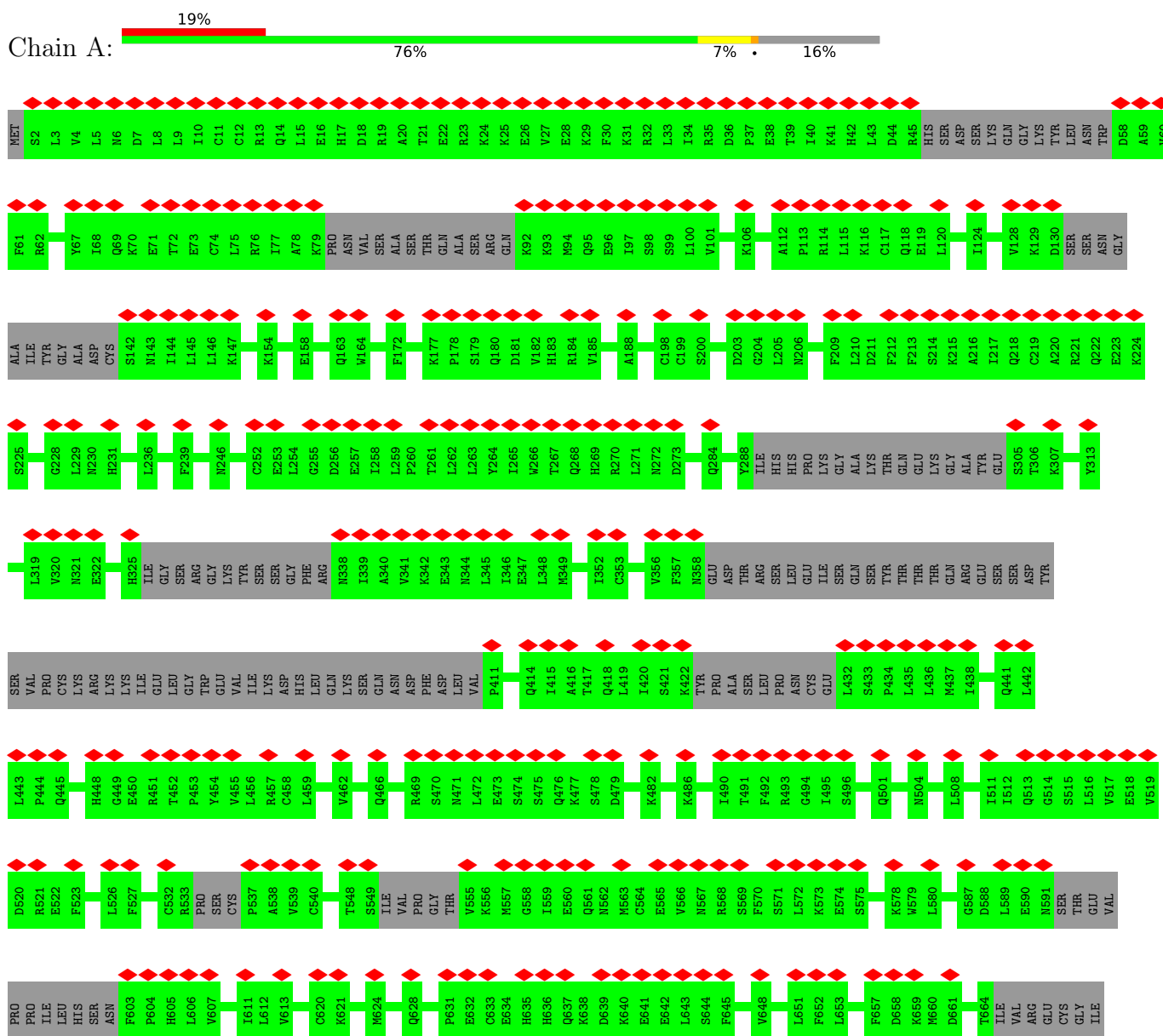
- Molecule 1 is a protein called Serine-protein kinase ATM.

Mol	Chain	Residues	Atoms					AltConf	Trace
1	A	2552	Total	C	N	O	S	0	0
			15303	9384	2901	2969	49		
1	B	2551	Total	C	N	O	S	0	0
			15298	9381	2900	2968	49		

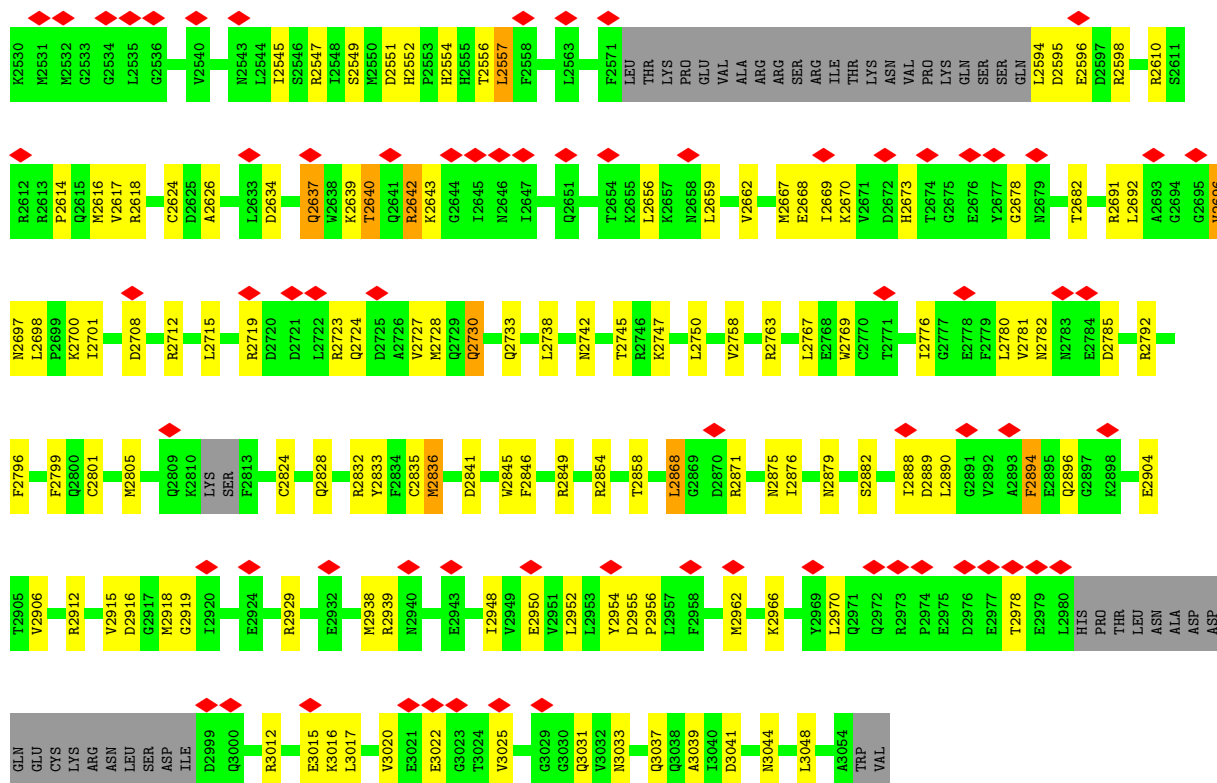
3 Residue-property plots

These plots are drawn for all protein, RNA, DNA and oligosaccharide chains in the entry. The first graphic for a chain summarises the proportions of the various outlier classes displayed in the second graphic. The second graphic shows the sequence view annotated by issues in geometry and atom inclusion in map density. Residues are color-coded according to the number of geometric quality criteria for which they contain at least one outlier: green = 0, yellow = 1, orange = 2 and red = 3 or more. A red diamond above a residue indicates a poor fit to the EM map for this residue (all-atom inclusion < 40%). Stretches of 2 or more consecutive residues without any outlier are shown as a green connector. Residues present in the sample, but not in the model, are shown in grey.

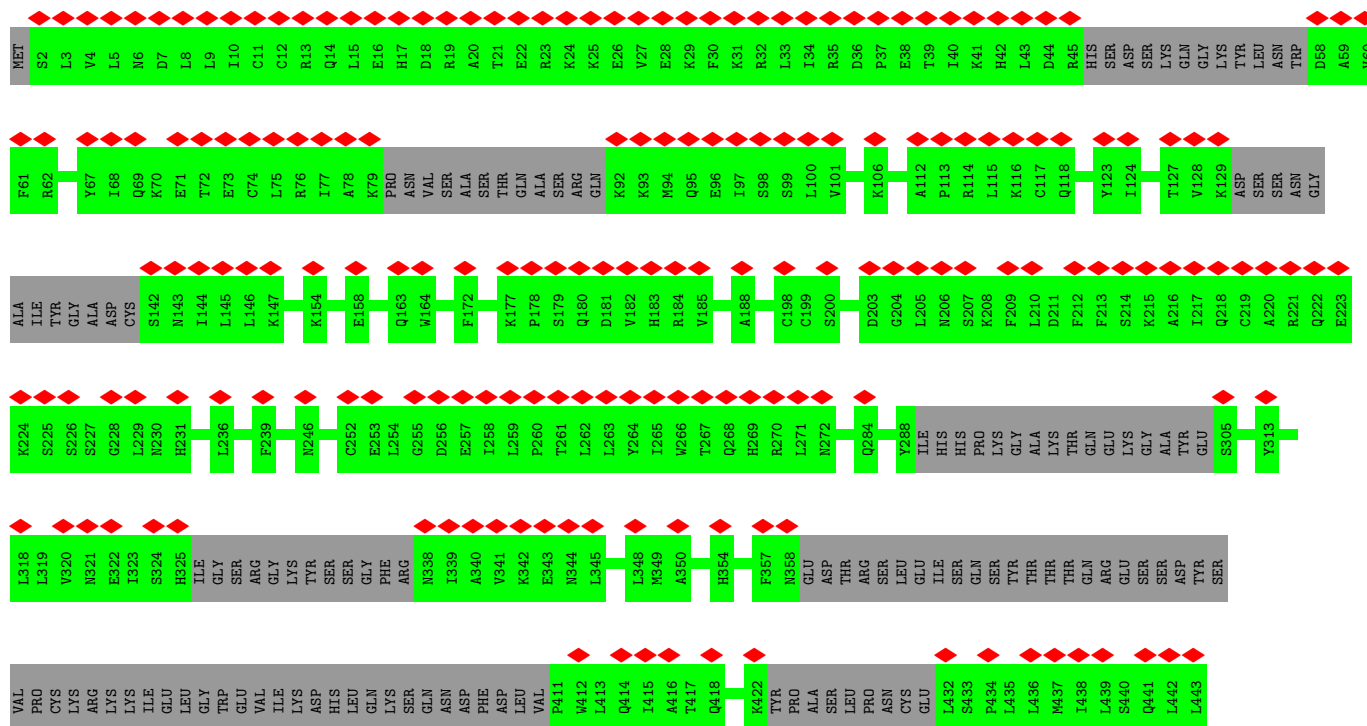
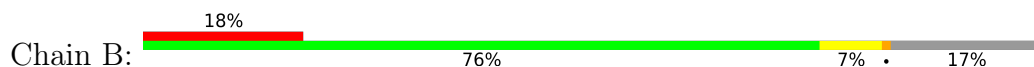
• Molecule 1: Serine-protein kinase ATM



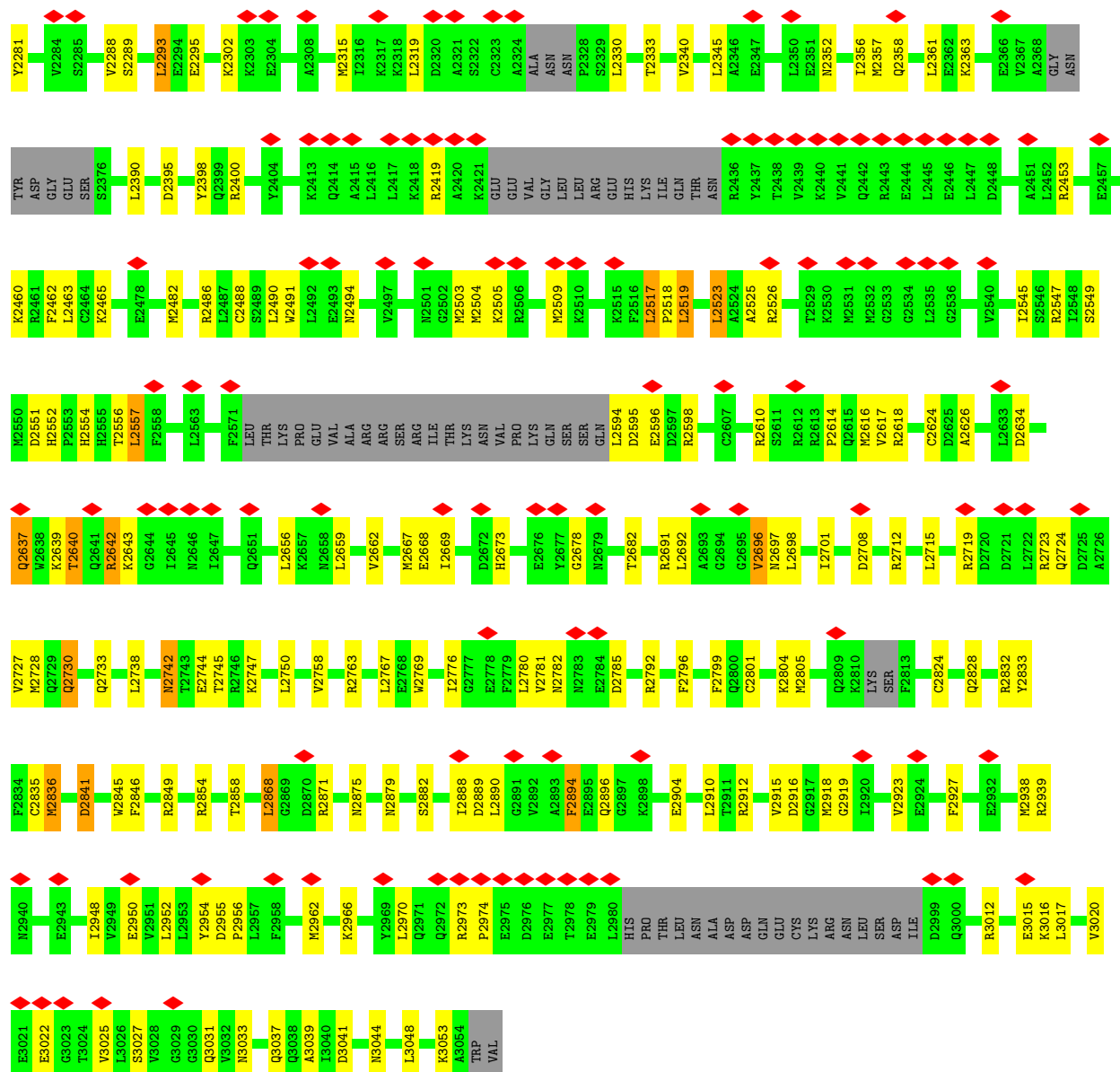




• Molecule 1: Serine-protein kinase ATM







4 Experimental information

Property	Value	Source
EM reconstruction method	SINGLE PARTICLE	Depositor
Imposed symmetry	POINT, Not provided	
Number of particles used	232416	Depositor
Resolution determination method	FSC 0.143 CUT-OFF	Depositor
CTF correction method	PHASE FLIPPING AND AMPLITUDE CORRECTION	Depositor
Microscope	FEI TITAN KRIOS	Depositor
Voltage (kV)	300	Depositor
Electron dose ($e^-/\text{\AA}^2$)	32, 38	Depositor
Minimum defocus (nm)	Not provided	
Maximum defocus (nm)	Not provided	
Magnification	Not provided	
Image detector	FEI FALCON III (4k x 4k), GATAN K2 SUMMIT (4k x 4k)	Depositor
Maximum map value	0.074	Depositor
Minimum map value	-0.036	Depositor
Average map value	0.000	Depositor
Map value standard deviation	0.002	Depositor
Recommended contour level	0.019	Depositor
Map size (Å)	414.72, 414.72, 414.72	wwPDB
Map dimensions	256, 256, 256	wwPDB
Map angles (°)	90.0, 90.0, 90.0	wwPDB
Pixel spacing (Å)	1.62, 1.62, 1.62	Depositor

5 Model quality

5.1 Standard geometry

The Z score for a bond length (or angle) is the number of standard deviations the observed value is removed from the expected value. A bond length (or angle) with $|Z| > 5$ is considered an outlier worth inspection. RMSZ is the root-mean-square of all Z scores of the bond lengths (or angles).

Mol	Chain	Bond lengths		Bond angles	
		RMSZ	# Z >5	RMSZ	# Z >5
1	A	0.23	0/15382	0.40	0/21078
1	B	0.23	0/15377	0.40	0/21071
All	All	0.23	0/30759	0.40	0/42149

There are no bond length outliers.

There are no bond angle outliers.

There are no chirality outliers.

There are no planarity outliers.

5.2 Too-close contacts

In the following table, the Non-H and H(model) columns list the number of non-hydrogen atoms and hydrogen atoms in the chain respectively. The H(added) column lists the number of hydrogen atoms added and optimized by MolProbity. The Clashes column lists the number of clashes within the asymmetric unit, whereas Symm-Clashes lists symmetry-related clashes.

Mol	Chain	Non-H	H(model)	H(added)	Clashes	Symm-Clashes
1	A	15303	0	10592	119	0
1	B	15298	0	10590	123	0
All	All	30601	0	21182	240	0

The all-atom clashscore is defined as the number of clashes found per 1000 atoms (including hydrogen atoms). The all-atom clashscore for this structure is 5.

All (240) close contacts within the same asymmetric unit are listed below, sorted by their clash magnitude.

Atom-1	Atom-2	Interatomic distance (Å)	Clash overlap (Å)
1:A:2868:LEU:H	1:A:2894:PHE:HA	1.54	0.73
1:B:2868:LEU:H	1:B:2894:PHE:HA	1.55	0.71

Continued on next page...

Continued from previous page...

Atom-1	Atom-2	Interatomic distance (Å)	Clash overlap (Å)
1:A:2824:CYS:SG	1:A:2912:ARG:NH2	2.65	0.70
1:B:2824:CYS:SG	1:B:2912:ARG:NH2	2.65	0.69
1:A:2782:ASN:ND2	1:A:2785:ASP:OD1	2.29	0.66
1:B:2782:ASN:ND2	1:B:2785:ASP:OD1	2.30	0.65
1:B:2835:CYS:SG	1:B:2845:TRP:NE1	2.69	0.65
1:A:2896:GLN:HE22	1:A:2962:MET:HB2	1.61	0.65
1:A:2509:MET:HA	1:A:2547:ARG:HH22	1.61	0.64
1:A:2835:CYS:SG	1:A:2845:TRP:NE1	2.70	0.64
1:B:2723:ARG:NH2	1:B:2955:ASP:OD2	2.31	0.64
1:B:2509:MET:HA	1:B:2547:ARG:HH22	1.63	0.63
1:A:2723:ARG:NH2	1:A:2955:ASP:OD2	2.31	0.63
1:B:2767:LEU:HD13	1:B:2888:ILE:HD11	1.81	0.63
1:B:2792:ARG:HH12	1:B:2828:GLN:H	1.47	0.63
1:B:2896:GLN:HE22	1:B:2962:MET:HB2	1.63	0.63
1:A:2730:GLN:OE1	1:A:2733:GLN:NE2	2.33	0.62
1:A:2719:ARG:HA	1:A:2763:ARG:HB3	1.81	0.62
1:B:2517:LEU:HG	1:B:2518:PRO:HD3	1.80	0.62
1:B:3033:ASN:O	1:B:3037:GLN:NE2	2.33	0.62
1:B:2719:ARG:HA	1:B:2763:ARG:HB3	1.81	0.61
1:B:2730:GLN:OE1	1:B:2733:GLN:NE2	2.32	0.61
1:A:2293:LEU:HD21	1:A:2340:VAL:HG21	1.82	0.61
1:A:2526:ARG:NH2	1:A:2954:TYR:O	2.34	0.61
1:A:2767:LEU:HD13	1:A:2888:ILE:HD11	1.81	0.61
1:A:2181:GLU:OE2	1:A:2227:ARG:NH1	2.33	0.61
1:B:2526:ARG:NH2	1:B:2954:TYR:O	2.34	0.61
1:B:2181:GLU:OE2	1:B:2227:ARG:NH1	2.33	0.61
1:A:2517:LEU:HG	1:A:2518:PRO:HD3	1.82	0.60
1:A:3020:VAL:HG13	1:A:3022:GLU:H	1.67	0.59
1:A:2138:ARG:HG2	1:A:2139:GLU:HG3	1.83	0.59
1:B:2138:ARG:HG2	1:B:2139:GLU:HG3	1.84	0.58
1:A:2217:PHE:HZ	1:A:2262:ALA:HA	1.69	0.58
1:A:2194:THR:HB	1:A:2197:GLN:HG2	1.85	0.58
1:A:2849:ARG:NH1	1:A:2918:MET:O	2.37	0.58
1:A:2792:ARG:HH12	1:A:2828:GLN:H	1.50	0.57
1:A:2289:SER:HB3	1:A:2319:LEU:HD21	1.86	0.57
1:B:2194:THR:HB	1:B:2197:GLN:HG2	1.85	0.57
1:A:2637:GLN:NE2	1:A:2637:GLN:O	2.37	0.57
1:B:2201:VAL:HA	1:B:2204:LYS:HG2	1.87	0.56
1:B:2637:GLN:O	1:B:2637:GLN:NE2	2.37	0.56
1:B:2715:LEU:HD23	1:B:2769:TRP:HB2	1.87	0.56
1:B:2879:ASN:ND2	1:B:2882:SER:OG	2.38	0.56

Continued on next page...

Continued from previous page...

Atom-1	Atom-2	Interatomic distance (Å)	Clash overlap (Å)
1:A:2174:SER:HB3	1:A:2219:PHE:HB2	1.86	0.56
1:A:2400:ARG:NE	1:B:3022:GLU:OE2	2.38	0.56
1:B:2133:GLN:O	1:B:2138:ARG:NH1	2.27	0.56
1:B:3020:VAL:HG13	1:B:3022:GLU:H	1.70	0.56
1:A:2133:GLN:O	1:A:2138:ARG:NH1	2.27	0.56
1:A:2948:ILE:HG22	1:A:2952:LEU:HD23	1.88	0.56
1:B:2849:ARG:NH1	1:B:2918:MET:O	2.38	0.55
1:B:2482:MET:SD	1:B:2482:MET:N	2.79	0.55
1:A:2594:LEU:N	1:A:2596:GLU:OE2	2.39	0.55
1:A:2868:LEU:O	1:A:2871:ARG:NH2	2.39	0.55
1:A:3033:ASN:O	1:A:3037:GLN:NE2	2.40	0.55
1:B:2293:LEU:HD21	1:B:2340:VAL:HG21	1.87	0.55
1:A:2668:GLU:OE1	1:A:2712:ARG:NH1	2.40	0.55
1:B:2868:LEU:O	1:B:2871:ARG:NH2	2.39	0.55
1:B:2248:LYS:NZ	1:B:2281:TYR:O	2.40	0.55
1:A:2482:MET:SD	1:A:2482:MET:N	2.80	0.55
1:B:2174:SER:HB3	1:B:2219:PHE:HB2	1.89	0.55
1:B:2356:ILE:HB	1:B:2361:LEU:HD23	1.88	0.55
1:A:3022:GLU:OE2	1:B:2400:ARG:NE	2.38	0.54
1:B:2948:ILE:HG22	1:B:2952:LEU:HD23	1.88	0.54
1:A:2715:LEU:HD23	1:A:2769:TRP:HB2	1.88	0.54
1:B:2395:ASP:OD2	1:B:2486:ARG:NE	2.37	0.54
1:B:2594:LEU:N	1:B:2596:GLU:OE2	2.39	0.54
1:A:2201:VAL:HA	1:A:2204:LYS:HG2	1.88	0.54
1:A:2248:LYS:NZ	1:A:2281:TYR:O	2.40	0.54
1:B:2668:GLU:OE1	1:B:2712:ARG:NH1	2.39	0.54
1:A:2554:HIS:HA	1:A:2557:LEU:HD22	1.87	0.54
1:B:2217:PHE:HZ	1:B:2262:ALA:HA	1.70	0.54
1:B:2345:LEU:HD11	1:B:2356:ILE:HD13	1.90	0.54
1:B:2554:HIS:HA	1:B:2557:LEU:HD22	1.88	0.53
1:B:2846:PHE:HA	1:B:2849:ARG:HG2	1.90	0.53
1:A:2525:ALA:HB1	1:A:2956:PRO:HD2	1.91	0.53
1:A:2846:PHE:HA	1:A:2849:ARG:HG2	1.90	0.53
1:B:2357:MET:SD	1:B:2358:GLN:NE2	2.82	0.53
1:A:2879:ASN:ND2	1:A:2882:SER:OG	2.38	0.53
1:B:2750:LEU:HB2	1:B:2858:THR:HG21	1.91	0.52
1:B:2525:ALA:HB1	1:B:2956:PRO:HD2	1.91	0.52
1:B:2939:ARG:NH2	1:B:3031:GLN:OE1	2.41	0.52
1:A:2395:ASP:OD2	1:A:2486:ARG:NE	2.36	0.52
1:B:1695:SER:HA	1:B:2166:VAL:HG11	1.92	0.52
1:B:2486:ARG:NH1	1:B:2950:GLU:OE2	2.42	0.52

Continued on next page...

Continued from previous page...

Atom-1	Atom-2	Interatomic distance (Å)	Clash overlap (Å)
1:B:2610:ARG:HG3	1:B:2617:VAL:HG21	1.91	0.52
1:B:2517:LEU:HD23	1:B:2517:LEU:H	1.74	0.52
1:B:2275:ILE:HD12	1:B:2295:GLU:HG3	1.90	0.52
1:A:2750:LEU:HB2	1:A:2858:THR:HG21	1.90	0.52
1:A:2357:MET:SD	1:A:2358:GLN:NE2	2.83	0.52
1:B:2289:SER:HB3	1:B:2319:LEU:HD21	1.91	0.52
1:B:2849:ARG:HH11	1:B:2919:GLY:HA3	1.73	0.52
1:A:2486:ARG:NH1	1:A:2950:GLU:OE2	2.42	0.51
1:A:2275:ILE:HD12	1:A:2295:GLU:HG3	1.92	0.51
1:A:2610:ARG:HG3	1:A:2617:VAL:HG21	1.92	0.51
1:B:2598:ARG:HH21	1:B:2956:PRO:HB2	1.75	0.51
1:A:2626:ALA:HB1	1:A:2656:LEU:HD22	1.92	0.51
1:A:2517:LEU:H	1:A:2517:LEU:HD23	1.74	0.51
1:A:2849:ARG:HH11	1:A:2919:GLY:HA3	1.74	0.51
1:B:1684:SER:O	1:B:2151:ARG:NH2	2.44	0.51
1:A:2598:ARG:HH21	1:A:2956:PRO:HB2	1.76	0.51
1:A:2750:LEU:HB3	1:A:2854:ARG:HH21	1.76	0.51
1:A:2551:ASP:OD1	1:A:2552:HIS:N	2.44	0.50
1:B:2750:LEU:HD22	1:B:2854:ARG:HH21	1.76	0.50
1:A:2724:GLN:HA	1:A:2727:VAL:HG22	1.94	0.50
1:B:3012:ARG:NE	1:B:3015:GLU:OE2	2.45	0.50
1:A:2462:PHE:HA	1:A:2465:LYS:HE2	1.94	0.49
1:A:2238:GLU:O	1:A:2239:MET:HG3	2.12	0.49
1:B:2462:PHE:HA	1:B:2465:LYS:HE2	1.93	0.49
1:A:2268:THR:HB	1:A:2302:LYS:HE2	1.94	0.49
1:B:1420:LEU:HA	1:B:1426:ALA:H	1.77	0.49
1:B:2238:GLU:O	1:B:2239:MET:HG3	2.12	0.49
1:B:2551:ASP:OD1	1:B:2552:HIS:N	2.44	0.49
1:B:2626:ALA:HB1	1:B:2656:LEU:HD22	1.93	0.49
1:A:2345:LEU:HD11	1:A:2356:ILE:HD13	1.94	0.49
1:B:2503:MET:SD	1:B:2504:MET:N	2.86	0.49
1:B:3041:ASP:OD1	1:B:3041:ASP:N	2.46	0.49
1:A:1420:LEU:HA	1:A:1426:ALA:H	1.77	0.49
1:B:2724:GLN:HA	1:B:2727:VAL:HG22	1.95	0.49
1:B:2832:ARG:NH2	1:B:2916:ASP:OD2	2.41	0.49
1:A:2503:MET:SD	1:A:2504:MET:N	2.86	0.49
1:A:2523:LEU:HD21	1:A:2545:ILE:HG22	1.95	0.49
1:A:2356:ILE:HB	1:A:2361:LEU:HD23	1.94	0.49
1:B:2523:LEU:HD21	1:B:2545:ILE:HG22	1.95	0.49
1:B:2640:THR:OG1	1:B:2642:ARG:NH2	2.46	0.48
1:A:2132:LEU:HD13	1:A:2135:LEU:HD21	1.94	0.48

Continued on next page...

Continued from previous page...

Atom-1	Atom-2	Interatomic distance (Å)	Clash overlap (Å)
1:B:2167:TYR:HA	1:B:2170:TYR:HD2	1.78	0.48
1:B:2750:LEU:HB3	1:B:2854:ARG:HH21	1.78	0.48
1:B:2132:LEU:HD13	1:B:2135:LEU:HD21	1.96	0.48
1:A:2167:TYR:HA	1:A:2170:TYR:HD2	1.79	0.48
1:A:1684:SER:O	1:A:2151:ARG:NH2	2.47	0.48
1:A:2330:LEU:HA	1:A:2333:THR:HG22	1.95	0.48
1:B:2268:THR:HB	1:B:2302:LYS:HE2	1.96	0.47
1:B:2128:LEU:HD21	1:B:2226:LEU:HD11	1.95	0.47
1:B:2667:MET:SD	1:B:2758:VAL:HG12	2.54	0.47
1:A:1420:LEU:O	1:A:1425:GLN:N	2.39	0.47
1:A:1697:THR:N	1:A:2164:GLU:OE2	2.46	0.47
1:A:2912:ARG:HA	1:A:2915:VAL:HG12	1.97	0.47
1:A:3041:ASP:OD1	1:A:3041:ASP:N	2.46	0.47
1:B:2776:ILE:HB	1:B:2780:LEU:HD23	1.97	0.47
1:A:2549:SER:HA	1:A:2556:THR:HG21	1.96	0.47
1:A:2667:MET:SD	1:A:2758:VAL:HG12	2.54	0.47
1:B:2549:SER:HA	1:B:2556:THR:HG21	1.97	0.47
1:B:2639:LYS:HB3	1:B:2692:LEU:HD13	1.96	0.46
1:B:2398:TYR:OH	1:B:2494:ASN:ND2	2.48	0.46
1:A:2639:LYS:HB3	1:A:2692:LEU:HD13	1.96	0.46
1:A:2398:TYR:OH	1:A:2494:ASN:ND2	2.49	0.46
1:B:2912:ARG:HA	1:B:2915:VAL:HG12	1.97	0.46
1:A:2668:GLU:HG3	1:A:2669:ILE:H	1.81	0.46
1:A:2776:ILE:HB	1:A:2780:LEU:HD23	1.98	0.45
1:B:1420:LEU:O	1:B:1425:GLN:N	2.39	0.45
1:A:2841:ASP:OD1	1:A:2841:ASP:N	2.45	0.45
1:B:2668:GLU:HG3	1:B:2669:ILE:H	1.81	0.45
1:A:3041:ASP:OD2	1:A:3044:ASN:ND2	2.38	0.45
1:B:2634:ASP:N	1:B:2634:ASP:OD1	2.48	0.45
1:B:2169:LEU:H	1:B:2169:LEU:HD23	1.82	0.45
1:A:2128:LEU:HD21	1:A:2226:LEU:HD11	1.97	0.45
1:B:2796:PHE:CD2	1:B:2799:PHE:HB2	2.52	0.45
1:B:2875:ASN:OD1	1:B:2889:ASP:N	2.33	0.45
1:A:2832:ARG:NH2	1:A:2916:ASP:OD2	2.42	0.45
1:A:2750:LEU:HD22	1:A:2854:ARG:HH21	1.82	0.45
1:A:2785:ASP:OD1	1:A:2785:ASP:N	2.49	0.45
1:B:2212:LEU:O	1:B:2215:SER:OG	2.24	0.45
1:A:2640:THR:OG1	1:A:2642:ARG:NH2	2.49	0.44
1:B:2841:ASP:N	1:B:2841:ASP:OD1	2.44	0.44
1:B:3041:ASP:OD2	1:B:3044:ASN:ND2	2.38	0.44
1:A:2700:LYS:HE2	1:A:2700:LYS:HB2	1.90	0.44

Continued on next page...

Continued from previous page...

Atom-1	Atom-2	Interatomic distance (Å)	Clash overlap (Å)
1:B:2330:LEU:HA	1:B:2333:THR:HG22	1.99	0.44
1:A:2796:PHE:CD2	1:A:2799:PHE:HB2	2.52	0.44
1:A:3012:ARG:NE	1:A:3015:GLU:OE2	2.50	0.44
1:B:2170:TYR:HA	1:B:2173:LEU:HG	2.00	0.44
1:A:2123:SER:OG	1:A:2124:TYR:N	2.51	0.44
1:A:2835:CYS:HG	1:A:2845:TRP:HE1	1.53	0.44
1:A:1695:SER:HA	1:A:2166:VAL:HG11	1.99	0.44
1:B:2742:ASN:HD22	1:B:2744:GLU:H	1.65	0.44
1:A:2614:PRO:HG2	1:A:2616:MET:HG3	1.99	0.43
1:A:2876:ILE:H	1:A:2876:ILE:HG12	1.63	0.43
1:B:3012:ARG:HG3	1:B:3016:LYS:HE2	2.00	0.43
1:B:2691:ARG:HB3	1:B:2701:ILE:HB	1.99	0.43
1:A:2634:ASP:OD1	1:A:2634:ASP:N	2.48	0.43
1:B:2463:LEU:HD11	1:B:2490:LEU:HB3	2.00	0.43
1:B:2785:ASP:OD1	1:B:2785:ASP:N	2.49	0.43
1:B:2614:PRO:HG2	1:B:2616:MET:HG3	1.99	0.43
1:B:2147:LEU:HD12	1:B:2179:ILE:HG12	2.00	0.43
1:A:3012:ARG:HG3	1:A:3016:LYS:HE2	2.00	0.43
1:A:2170:TYR:HA	1:A:2173:LEU:HG	2.01	0.43
1:A:2212:LEU:O	1:A:2215:SER:OG	2.24	0.42
1:B:2234:LEU:HA	1:B:2237:LYS:HE3	2.01	0.42
1:B:2801:CYS:O	1:B:2805:MET:HG2	2.19	0.42
1:B:2939:ARG:HH12	1:B:3027:SER:HA	1.83	0.42
1:A:2906:VAL:HG13	1:A:3039:ALA:HA	2.01	0.42
1:A:2643:LYS:HB3	1:A:2692:LEU:HD22	2.02	0.42
1:A:2673:HIS:CE1	1:A:2678:GLY:HA3	2.55	0.42
1:A:2482:MET:HG2	1:A:2738:LEU:HD21	2.00	0.42
1:B:2160:LYS:HE2	1:B:2160:LYS:HB3	1.93	0.42
1:B:2673:HIS:CE1	1:B:2678:GLY:HA3	2.55	0.42
1:B:2955:ASP:OD1	1:B:2955:ASP:N	2.53	0.42
1:A:2939:ARG:NH2	1:A:3031:GLN:OE1	2.52	0.42
1:B:2910:LEU:HB3	1:B:3039:ALA:HB1	2.01	0.42
1:A:2312:LEU:HD12	1:A:2313:LYS:HG3	2.01	0.42
1:A:2662:VAL:O	1:A:2682:THR:OG1	2.38	0.42
1:B:2123:SER:OG	1:B:2124:TYR:N	2.49	0.42
1:A:2463:LEU:HD11	1:A:2490:LEU:HB3	2.02	0.42
1:B:3012:ARG:O	1:B:3015:GLU:HG3	2.20	0.42
1:B:2269:GLN:HE22	1:B:2273:ARG:HD3	1.85	0.41
1:A:2519:LEU:HD21	1:A:2523:LEU:HD13	2.03	0.41
1:A:2595:ASP:OD1	1:A:2595:ASP:N	2.53	0.41
1:A:3012:ARG:O	1:A:3015:GLU:HG3	2.20	0.41

Continued on next page...

Continued from previous page...

Atom-1	Atom-2	Interatomic distance (Å)	Clash overlap (Å)
1:B:2724:GLN:O	1:B:2728:MET:HG2	2.20	0.41
1:B:2227:ARG:HD2	1:B:2230:ILE:HD11	2.01	0.41
1:B:2643:LYS:HB3	1:B:2692:LEU:HD22	2.01	0.41
1:B:2482:MET:HG2	1:B:2738:LEU:HD21	2.01	0.41
1:B:2519:LEU:HD21	1:B:2523:LEU:HD13	2.01	0.41
1:B:2595:ASP:OD1	1:B:2595:ASP:N	2.53	0.41
1:B:2662:VAL:O	1:B:2682:THR:OG1	2.39	0.41
1:B:2871:ARG:HE	1:B:2875:ASN:HD22	1.68	0.41
1:A:2227:ARG:HD2	1:A:2230:ILE:HD11	2.01	0.41
1:A:2730:GLN:O	1:A:2733:GLN:HG3	2.21	0.41
1:A:2833:TYR:HA	1:A:2836:MET:SD	2.61	0.41
1:A:2871:ARG:HE	1:A:2875:ASN:HD22	1.69	0.41
1:B:2244:ARG:O	1:B:2247:ILE:HG13	2.20	0.41
1:B:2488:CYS:HA	1:B:2491:TRP:HB3	2.03	0.41
1:A:2169:LEU:HD23	1:A:2169:LEU:H	1.86	0.41
1:A:2801:CYS:O	1:A:2805:MET:HG2	2.20	0.41
1:A:2875:ASN:OD1	1:A:2889:ASP:N	2.34	0.41
1:B:2696:VAL:HG23	1:B:2697:ASN:H	1.85	0.41
1:A:2691:ARG:HB3	1:A:2701:ILE:HB	2.01	0.41
1:B:2352:ASN:OD1	1:B:2352:ASN:N	2.54	0.41
1:B:2804:LYS:NZ	1:B:3053:LYS:O	2.37	0.41
1:B:2923:VAL:HG13	1:B:2927:PHE:HB3	2.02	0.41
1:A:2255:LEU:HD13	1:A:2255:LEU:HA	1.88	0.41
1:A:2696:VAL:HG23	1:A:2697:ASN:H	1.86	0.41
1:A:2724:GLN:O	1:A:2728:MET:HG2	2.20	0.41
1:B:2973:ARG:HB2	1:B:2974:PRO:HD3	2.03	0.40
1:A:2361:LEU:HB3	1:A:2390:LEU:HG	2.03	0.40
1:B:2833:TYR:HA	1:B:2836:MET:SD	2.61	0.40
1:A:2554:HIS:HB2	1:A:2670:LYS:HE2	2.03	0.40
1:B:2460:LYS:HB3	1:B:2460:LYS:HE3	1.87	0.40
1:B:2730:GLN:O	1:B:2733:GLN:HG3	2.21	0.40
1:A:2019:TYR:HA	1:A:2929:ARG:HD3	2.02	0.40
1:A:2805:MET:HB3	1:A:2978:THR:HG23	2.04	0.40

There are no symmetry-related clashes.

5.3 Torsion angles

5.3.1 Protein backbone

In the following table, the Percentiles column shows the percent Ramachandran outliers of the chain as a percentile score with respect to all PDB entries followed by that with respect to all EM entries.

The Analysed column shows the number of residues for which the backbone conformation was analysed, and the total number of residues.

Mol	Chain	Analysed	Favoured	Allowed	Outliers	Percentiles	
1	A	2476/3056 (81%)	2357 (95%)	119 (5%)	0	100	100
1	B	2475/3056 (81%)	2367 (96%)	108 (4%)	0	100	100
All	All	4951/6112 (81%)	4724 (95%)	227 (5%)	0	100	100

There are no Ramachandran outliers to report.

5.3.2 Protein sidechains

In the following table, the Percentiles column shows the percent sidechain outliers of the chain as a percentile score with respect to all PDB entries followed by that with respect to all EM entries.

The Analysed column shows the number of residues for which the sidechain conformation was analysed, and the total number of residues.

Mol	Chain	Analysed	Rotameric	Outliers	Percentiles	
1	A	757/2780 (27%)	710 (94%)	47 (6%)	18	46
1	B	757/2780 (27%)	710 (94%)	47 (6%)	18	46
All	All	1514/5560 (27%)	1420 (94%)	94 (6%)	22	46

All (94) residues with a non-rotameric sidechain are listed below:

Mol	Chain	Res	Type
1	A	2138	ARG
1	A	2147	LEU
1	A	2161	ARG
1	A	2169	LEU
1	A	2237	LYS
1	A	2239	MET
1	A	2255	LEU
1	A	2257	GLU

Continued on next page...

Continued from previous page...

Mol	Chain	Res	Type
1	A	2270	LEU
1	A	2288	VAL
1	A	2293	LEU
1	A	2315	MET
1	A	2363	LYS
1	A	2390	LEU
1	A	2419	ARG
1	A	2445	LEU
1	A	2453	ARG
1	A	2505	LYS
1	A	2517	LEU
1	A	2519	LEU
1	A	2523	LEU
1	A	2557	LEU
1	A	2618	ARG
1	A	2624	CYS
1	A	2637	GLN
1	A	2640	THR
1	A	2642	ARG
1	A	2659	LEU
1	A	2696	VAL
1	A	2698	LEU
1	A	2708	ASP
1	A	2730	GLN
1	A	2742	ASN
1	A	2745	THR
1	A	2747	LYS
1	A	2781	VAL
1	A	2836	MET
1	A	2868	LEU
1	A	2890	LEU
1	A	2894	PHE
1	A	2904	GLU
1	A	2938	MET
1	A	2966	LYS
1	A	2970	LEU
1	A	3017	LEU
1	A	3025	VAL
1	A	3048	LEU
1	B	2138	ARG
1	B	2147	LEU
1	B	2161	ARG

Continued on next page...

Continued from previous page...

Mol	Chain	Res	Type
1	B	2169	LEU
1	B	2191	ARG
1	B	2237	LYS
1	B	2239	MET
1	B	2257	GLU
1	B	2270	LEU
1	B	2288	VAL
1	B	2293	LEU
1	B	2315	MET
1	B	2363	LYS
1	B	2390	LEU
1	B	2419	ARG
1	B	2453	ARG
1	B	2505	LYS
1	B	2517	LEU
1	B	2519	LEU
1	B	2523	LEU
1	B	2557	LEU
1	B	2618	ARG
1	B	2624	CYS
1	B	2637	GLN
1	B	2640	THR
1	B	2642	ARG
1	B	2659	LEU
1	B	2696	VAL
1	B	2698	LEU
1	B	2708	ASP
1	B	2730	GLN
1	B	2742	ASN
1	B	2745	THR
1	B	2747	LYS
1	B	2781	VAL
1	B	2836	MET
1	B	2841	ASP
1	B	2868	LEU
1	B	2890	LEU
1	B	2894	PHE
1	B	2904	GLU
1	B	2938	MET
1	B	2966	LYS
1	B	2970	LEU
1	B	3017	LEU

Continued on next page...

Continued from previous page...

Mol	Chain	Res	Type
1	B	3025	VAL
1	B	3048	LEU

Sometimes sidechains can be flipped to improve hydrogen bonding and reduce clashes. All (33) such sidechains are listed below:

Mol	Chain	Res	Type
1	A	2177	GLN
1	A	2195	HIS
1	A	2282	ASN
1	A	2397	GLN
1	A	2399	GLN
1	A	2469	ASN
1	A	2494	ASN
1	A	2637	GLN
1	A	2673	HIS
1	A	2729	GLN
1	A	2740	GLN
1	A	2742	ASN
1	A	2879	ASN
1	A	2896	GLN
1	A	2971	GLN
1	A	3014	GLN
1	B	2177	GLN
1	B	2195	HIS
1	B	2282	ASN
1	B	2397	GLN
1	B	2399	GLN
1	B	2494	ASN
1	B	2637	GLN
1	B	2673	HIS
1	B	2729	GLN
1	B	2730	GLN
1	B	2733	GLN
1	B	2740	GLN
1	B	2742	ASN
1	B	2879	ASN
1	B	2896	GLN
1	B	2971	GLN
1	B	3014	GLN

5.3.3 RNA [i](#)

There are no RNA molecules in this entry.

5.4 Non-standard residues in protein, DNA, RNA chains [i](#)

There are no non-standard protein/DNA/RNA residues in this entry.

5.5 Carbohydrates [i](#)

There are no monosaccharides in this entry.

5.6 Ligand geometry [i](#)

There are no ligands in this entry.

5.7 Other polymers [i](#)

There are no such residues in this entry.

5.8 Polymer linkage issues [i](#)

There are no chain breaks in this entry.

6 Map visualisation [i](#)

This section contains visualisations of the EMDB entry EMD-9950. These allow visual inspection of the internal detail of the map and identification of artifacts.

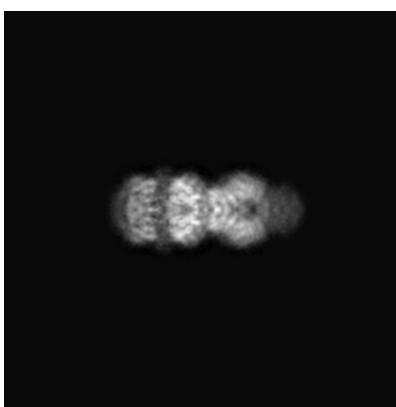
No raw map or half-maps were deposited for this entry and therefore no images, graphs, etc. pertaining to the raw map can be shown.

6.1 Orthogonal projections [i](#)

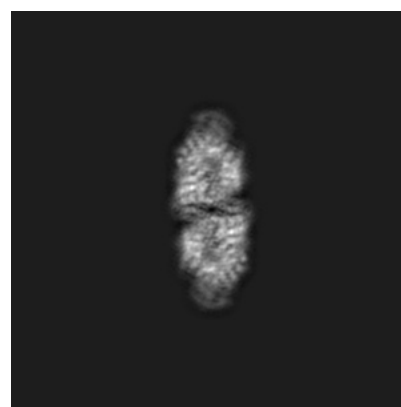
6.1.1 Primary map



X



Y

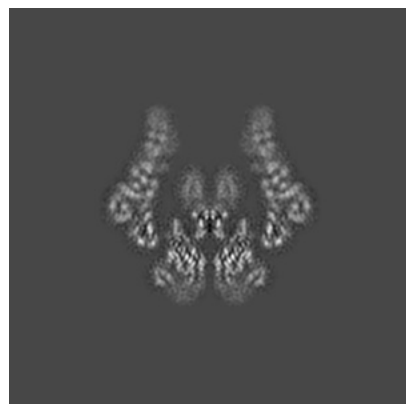


Z

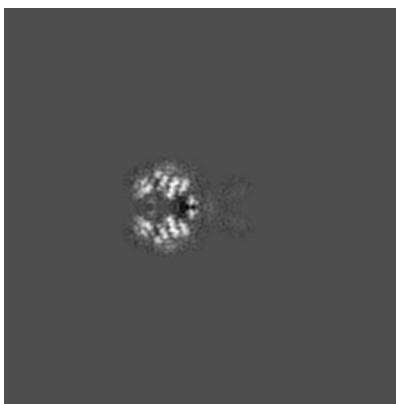
The images above show the map projected in three orthogonal directions.

6.2 Central slices [i](#)

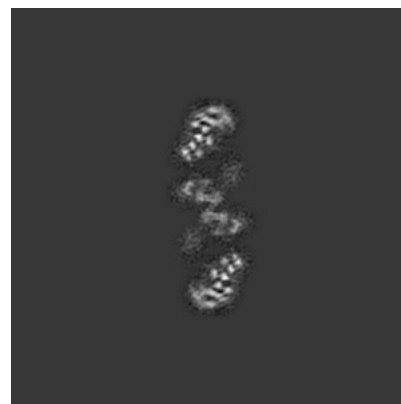
6.2.1 Primary map



X Index: 128



Y Index: 128

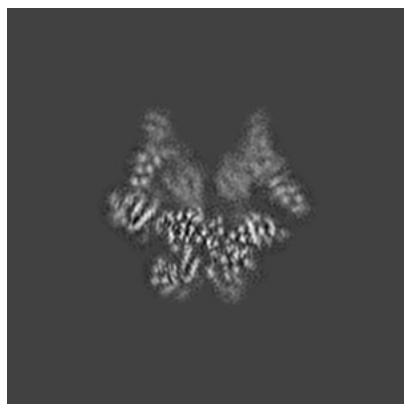


Z Index: 128

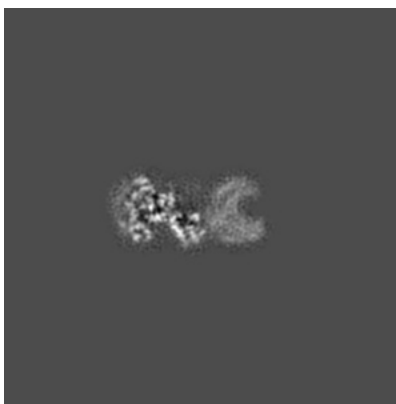
The images above show central slices of the map in three orthogonal directions.

6.3 Largest variance slices [i](#)

6.3.1 Primary map



X Index: 136



Y Index: 141



Z Index: 112

The images above show the largest variance slices of the map in three orthogonal directions.

6.4 Orthogonal surface views [i](#)

6.4.1 Primary map



X



Y



Z

The images above show the 3D surface view of the map at the recommended contour level 0.019. These images, in conjunction with the slice images, may facilitate assessment of whether an appropriate contour level has been provided.

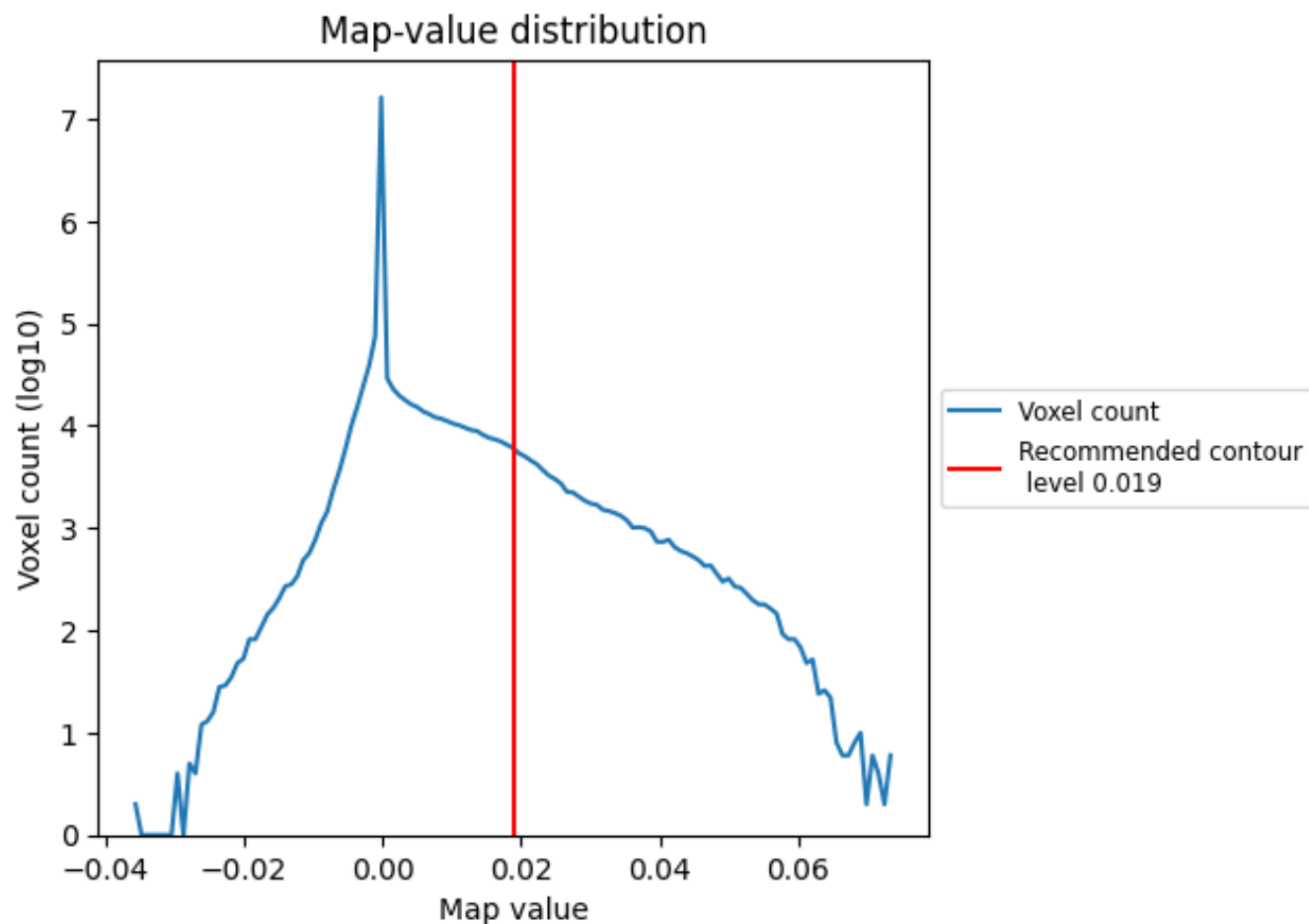
6.5 Mask visualisation

This section was not generated. No masks/segmentation were deposited.

7 Map analysis [i](#)

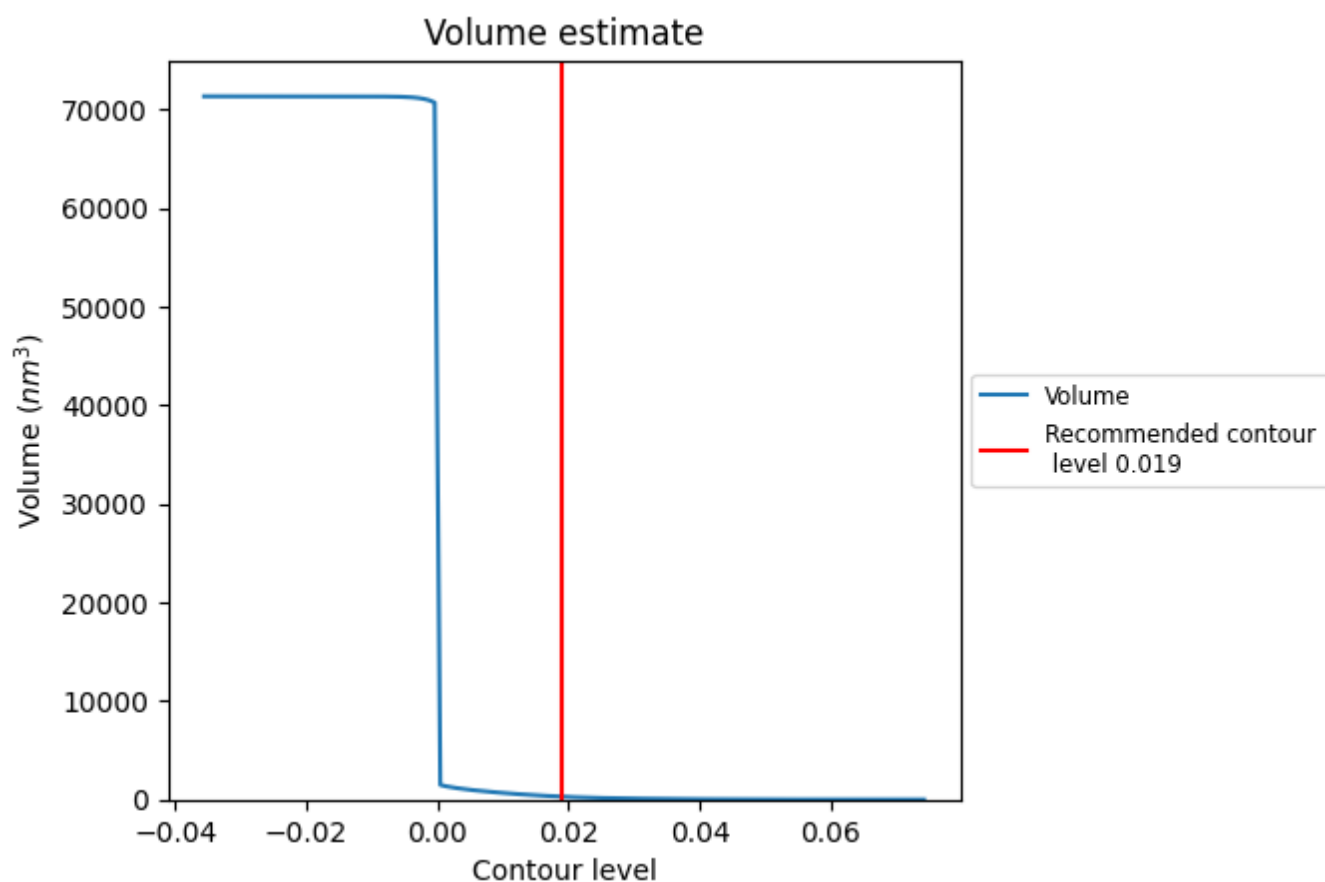
This section contains the results of statistical analysis of the map.

7.1 Map-value distribution [i](#)



The map-value distribution is plotted in 128 intervals along the x-axis. The y-axis is logarithmic. A spike in this graph at zero usually indicates that the volume has been masked.

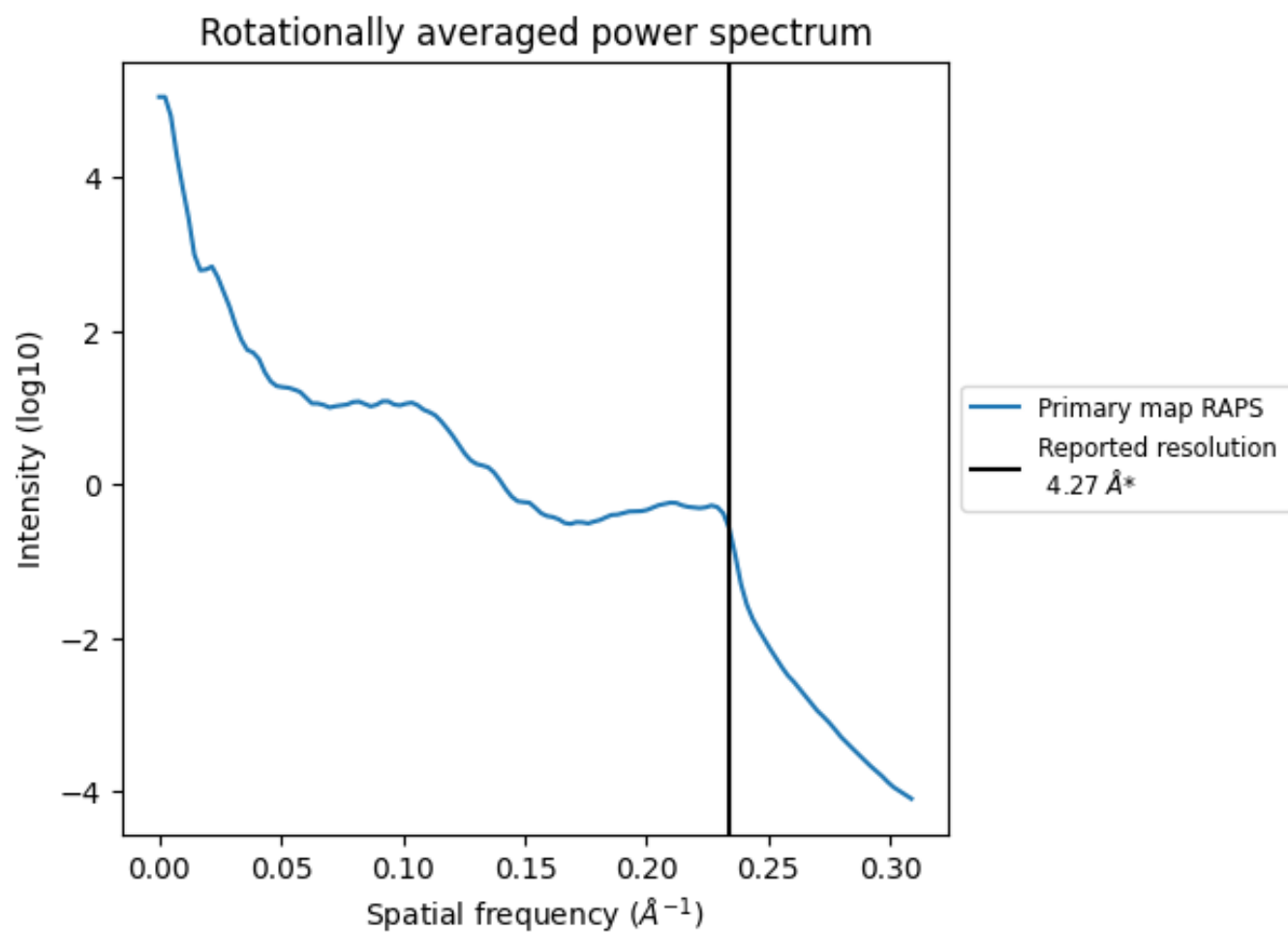
7.2 Volume estimate [i](#)



The volume at the recommended contour level is 292 nm³; this corresponds to an approximate mass of 264 kDa.

The volume estimate graph shows how the enclosed volume varies with the contour level. The recommended contour level is shown as a vertical line and the intersection between the line and the curve gives the volume of the enclosed surface at the given level.

7.3 Rotationally averaged power spectrum ⓘ



*Reported resolution corresponds to spatial frequency of 0.234 Å⁻¹

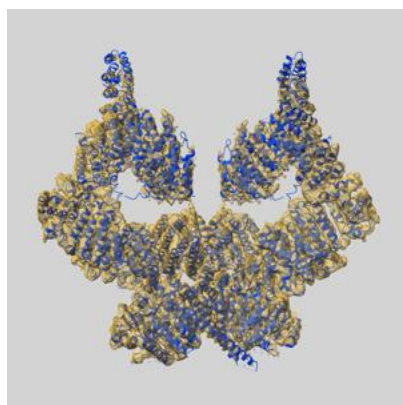
8 Fourier-Shell correlation

This section was not generated. No FSC curve or half-maps provided.

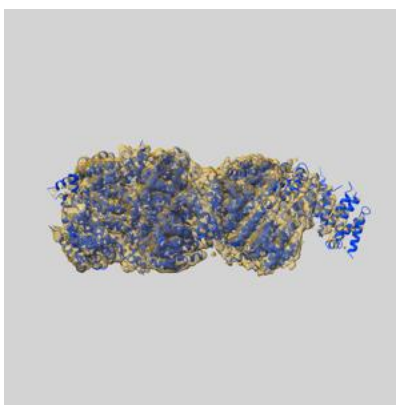
9 Map-model fit [i](#)

This section contains information regarding the fit between EMDB map EMD-9950 and PDB model 6K9L. Per-residue inclusion information can be found in section [3](#) on page [4](#).

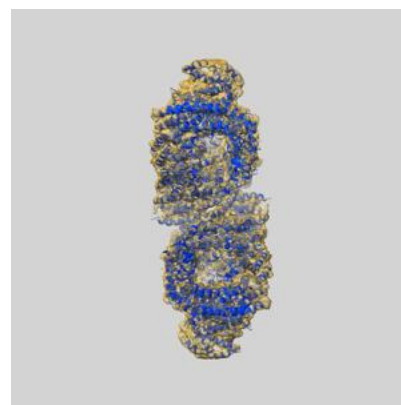
9.1 Map-model overlay [i](#)



X



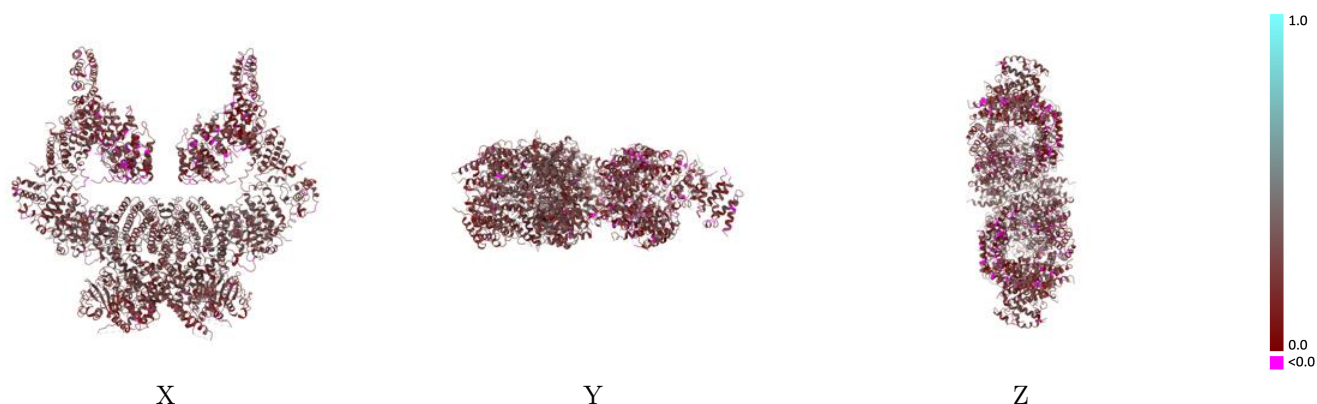
Y



Z

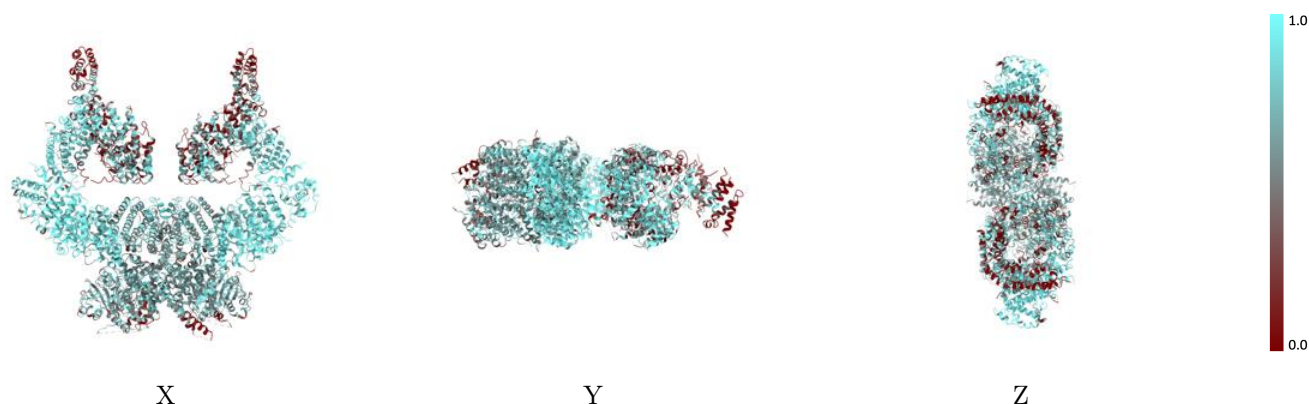
The images above show the 3D surface view of the map at the recommended contour level 0.019 at 50% transparency in yellow overlaid with a ribbon representation of the model coloured in blue. These images allow for the visual assessment of the quality of fit between the atomic model and the map.

9.2 Q-score mapped to coordinate model [i](#)



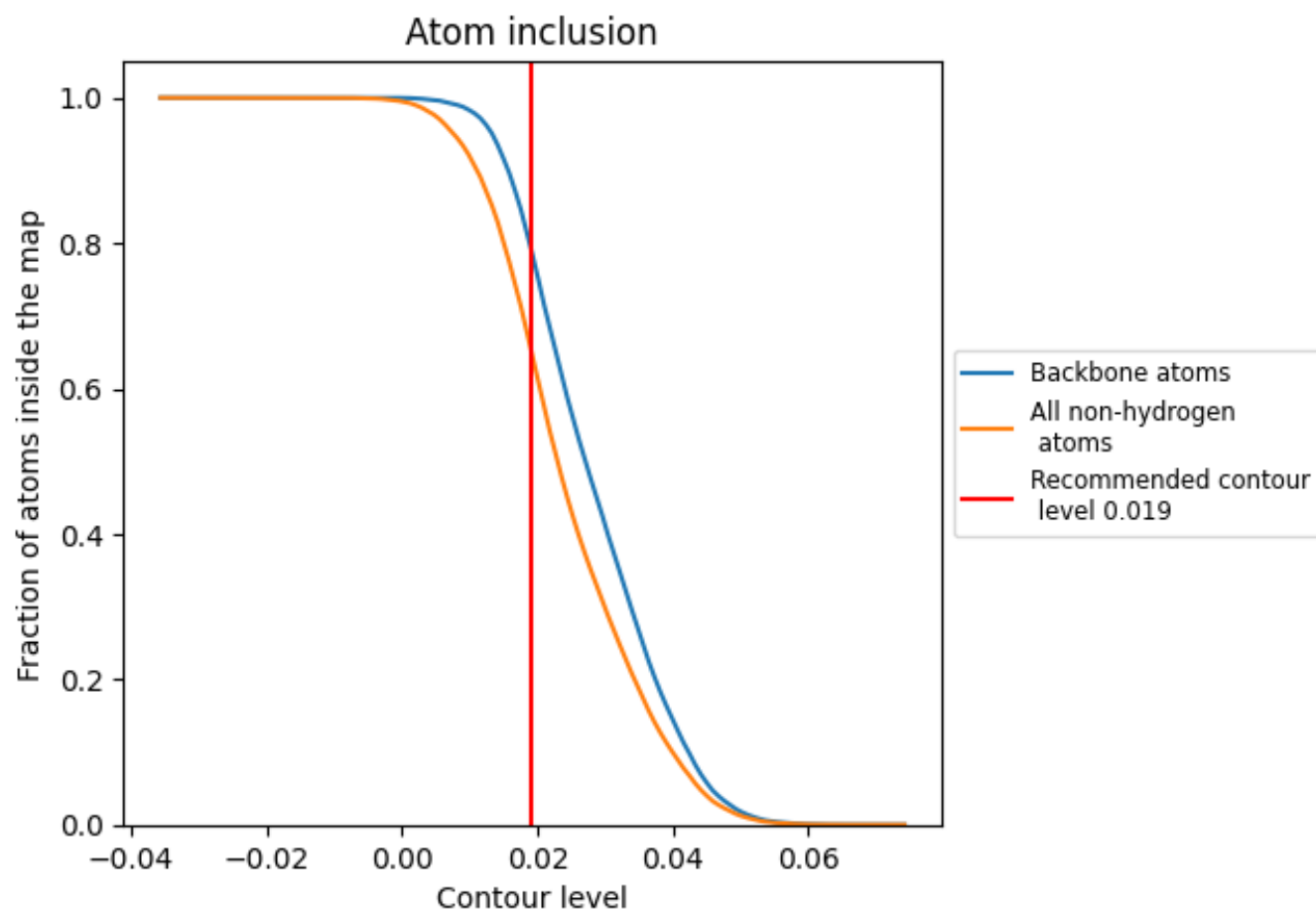
The images above show the model with each residue coloured according to its Q-score. This shows their resolvability in the map with higher Q-score values reflecting better resolvability. Please note: Q-score is calculating the resolvability of atoms, and thus high values are only expected at resolutions at which atoms can be resolved. Low Q-score values may therefore be expected for many entries.

9.3 Atom inclusion mapped to coordinate model [i](#)



The images above show the model with each residue coloured according to its atom inclusion. This shows to what extent they are inside the map at the recommended contour level (0.019).

9.4 Atom inclusion [i](#)



At the recommended contour level, 79% of all backbone atoms, 66% of all non-hydrogen atoms, are inside the map.

9.5 Map-model fit summary ⓘ

The table lists the average atom inclusion at the recommended contour level (0.019) and Q-score for the entire model and for each chain.

Chain	Atom inclusion	Q-score
All	<div></div> 0.6557	<div></div> 0.2470
A	<div></div> 0.6549	<div></div> 0.2470
B	<div></div> 0.6565	<div></div> 0.2470

