



# Full wwPDB X-ray Structure Validation Report ⓘ

Oct 5, 2021 – 12:30 PM EDT

PDB ID : 7KBN  
Title : 1.60 Angstrom resolution crystal structure of the beta-Q114A mutant of Tryptophan Synthase in complex with N-(4'-trifluoromethoxybenzenesulfonyl)-2-amino-1-ethylphosphate (F9F) at the enzyme alpha-site, cesium ion at the metal coordination site, and 2-aminophenol quinonoid at the enzyme beta site  
Authors : Hilario, E.; Dunn, M.F.; Mueller, L.J.  
Deposited on : 2020-10-02  
Resolution : 1.60 Å(reported)

This is a Full wwPDB X-ray Structure Validation Report for a publicly released PDB entry.

We welcome your comments at [validation@mail.wwpdb.org](mailto:validation@mail.wwpdb.org)

A user guide is available at

<https://www.wwpdb.org/validation/2017/XrayValidationReportHelp>

with specific help available everywhere you see the ⓘ symbol.

---

The following versions of software and data (see [references ⓘ](#)) were used in the production of this report:

MolProbity	:	4.02b-467
Mogul	:	1.8.5 (274361), CSD as541be (2020)
Xtriage (Phenix)	:	1.13
EDS	:	2.23.2
buster-report	:	1.1.7 (2018)
Percentile statistics	:	20191225.v01 (using entries in the PDB archive December 25th 2019)
Refmac	:	5.8.0158
CCP4	:	7.0.044 (Gargrove)
Ideal geometry (proteins)	:	Engh & Huber (2001)
Ideal geometry (DNA, RNA)	:	Parkinson et al. (1996)
Validation Pipeline (wwPDB-VP)	:	2.23.2

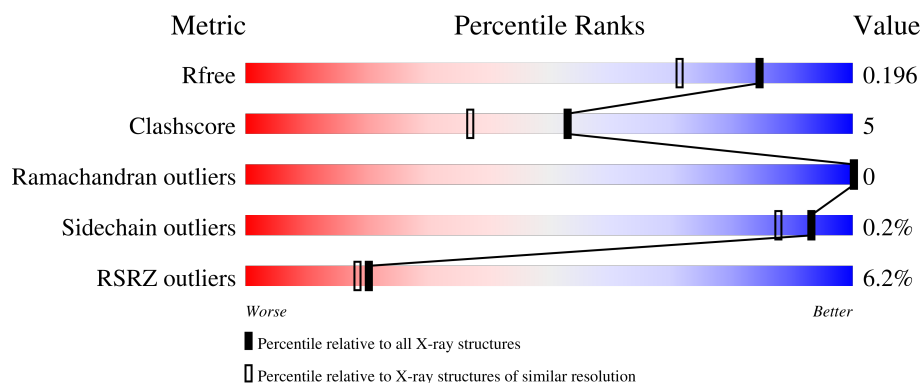
# 1 Overall quality at a glance

The following experimental techniques were used to determine the structure:

*X-RAY DIFFRACTION*

The reported resolution of this entry is 1.60 Å.

Percentile scores (ranging between 0-100) for global validation metrics of the entry are shown in the following graphic. The table shows the number of entries on which the scores are based.



Metric	Whole archive (#Entries)	Similar resolution (#Entries, resolution range(Å))
$R_{free}$	130704	3398 (1.60-1.60)
Clashscore	141614	3665 (1.60-1.60)
Ramachandran outliers	138981	3564 (1.60-1.60)
Sidechain outliers	138945	3563 (1.60-1.60)
RSRZ outliers	127900	3321 (1.60-1.60)

The table below summarises the geometric issues observed across the polymeric chains and their fit to the electron density. The red, orange, yellow and green segments of the lower bar indicate the fraction of residues that contain outliers for  $\geq 3$ , 2, 1 and 0 types of geometric quality criteria respectively. A grey segment represents the fraction of residues that are not modelled. The numeric value for each fraction is indicated below the corresponding segment, with a dot representing fractions  $\leq 5\%$ . The upper red bar (where present) indicates the fraction of residues that have poor fit to the electron density. The numeric value is given above the bar.

Mol	Chain	Length	Quality of chain
1	A	268	<div> <div>11%</div> <div> <div></div> <div>90%</div> <div>9%</div> </div> </div>
2	B	397	<div> <div>3%</div> <div> <div></div> <div>90%</div> <div>9%</div> </div> </div>

The following table lists non-polymeric compounds, carbohydrate monomers and non-standard residues in protein, DNA, RNA chains that are outliers for geometric or electron-density-fit criteria:

Mol	Type	Chain	Res	Chirality	Geometry	Clashes	Electron density
5	EDO	A	406	-	-	X	-
8	PEG	B	403[A]	-	-	X	-

## 2 Entry composition [i](#)

There are 11 unique types of molecules in this entry. The entry contains 6031 atoms, of which 0 are hydrogens and 0 are deuteriums.

In the tables below, the ZeroOcc column contains the number of atoms modelled with zero occupancy, the AltConf column contains the number of residues with at least one atom in alternate conformation and the Trace column contains the number of residues modelled with at most 2 atoms.

- Molecule 1 is a protein called Tryptophan synthase alpha chain.

Mol	Chain	Residues	Atoms					ZeroOcc	AltConf	Trace
1	A	268	Total	C	N	O	S	0	3	0
			2007	1271	348	381	7			

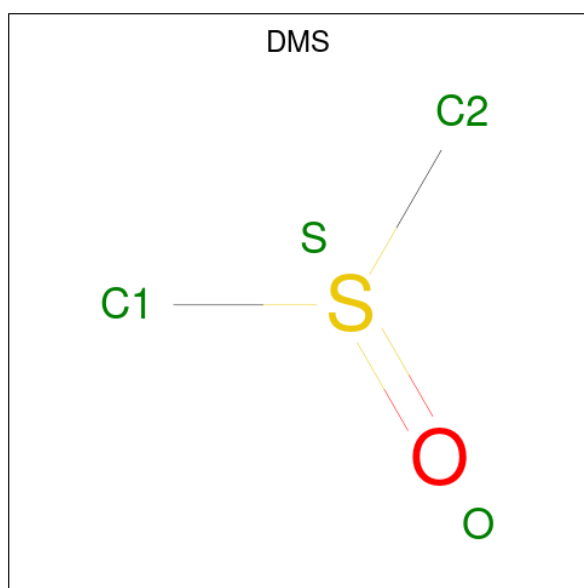
- Molecule 2 is a protein called Tryptophan synthase beta chain.

Mol	Chain	Residues	Atoms					ZeroOcc	AltConf	Trace
2	B	395	Total	C	N	O	S	0	19	0
			3137	1969	553	595	20			

There is a discrepancy between the modelled and reference sequences:

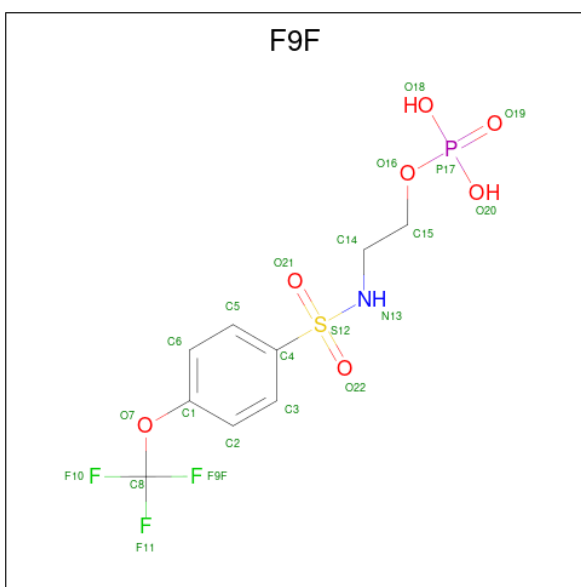
Chain	Residue	Modelled	Actual	Comment	Reference
B	114	ALA	GLN	engineered mutation	UNP P0A2K1

- Molecule 3 is DIMETHYL SULFOXIDE (three-letter code: DMS) (formula: C<sub>2</sub>H<sub>6</sub>OS).



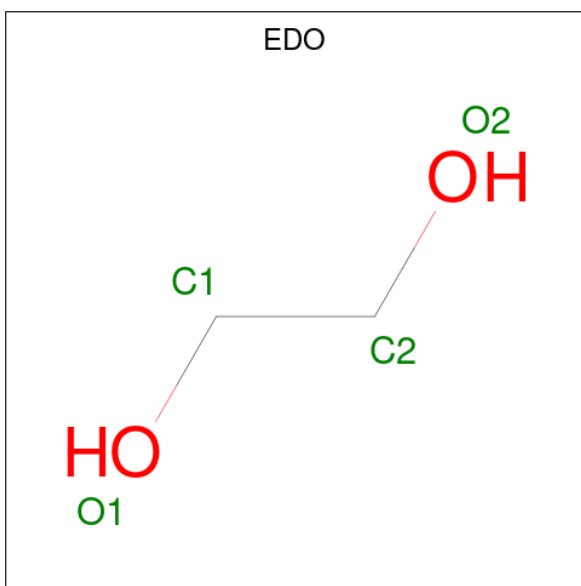
Mol	Chain	Residues	Atoms	ZeroOcc	AltConf
3	A	1	Total C O S 4 2 1 1	0	0
3	A	1	Total C O S 4 2 1 1	0	0
3	A	1	Total C O S 4 2 1 1	0	0
3	A	1	Total C O S 4 2 1 1	0	0
3	B	1	Total C O S 4 2 1 1	0	0
3	B	1	Total C O S 4 2 1 1	0	0
3	B	1	Total C O S 4 2 1 1	0	0
3	B	1	Total C O S 4 2 1 1	0	0
3	B	1	Total C O S 4 2 1 1	0	0
3	B	1	Total C O S 4 2 1 1	0	0
3	B	1	Total C O S 4 2 1 1	0	0
3	B	1	Total C O S 4 2 1 1	0	0
3	B	1	Total C O S 4 2 1 1	0	0
3	B	1	Total C O S 4 2 1 1	0	0
3	B	1	Total C O S 4 2 1 1	0	0
3	B	1	Total C O S 4 2 1 1	0	0
3	B	1	Total C O S 4 2 1 1	0	0
3	B	1	Total C O S 4 2 1 1	0	0
3	B	1	Total C O S 4 2 1 1	0	0
3	B	1	Total C O S 4 2 1 1	0	0

- Molecule 4 is 2-([4-(TRIFLUOROMETHOXY)PHENYL]SULFONYL)AMINO)ETHYL DIHYDROGEN PHOSPHATE (three-letter code: F9F) (formula: C<sub>9</sub>H<sub>11</sub>F<sub>3</sub>NO<sub>7</sub>PS) (labeled as "Ligand of Interest" by depositor).



Mol	Chain	Residues	Atoms							ZeroOcc	AltConf
4	A	1	Total	C	F	N	O	P	S	0	0
			22	9	3	1	7	1	1		

- Molecule 5 is 1,2-ETHANEDIOL (three-letter code: EDO) (formula: C<sub>2</sub>H<sub>6</sub>O<sub>2</sub>).



Mol	Chain	Residues	Atoms			ZeroOcc	AltConf
5	A	1	Total	C	O	0	0
			4	2	2		
5	A	1	Total	C	O	0	0
			4	2	2		
5	A	1	Total	C	O	0	0
			4	2	2		

*Continued on next page...*

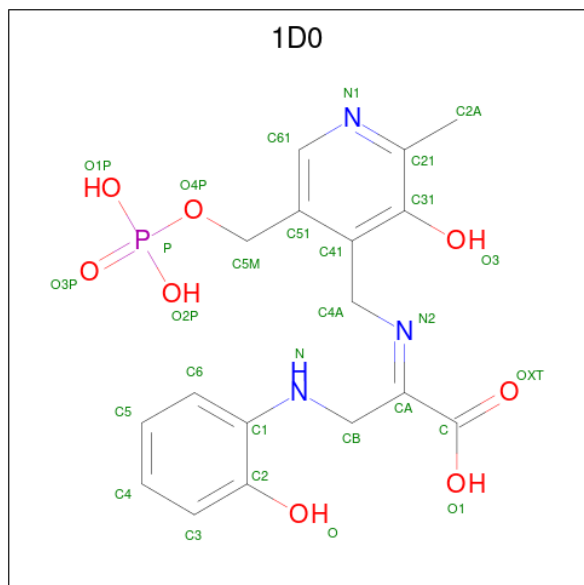
Continued from previous page...

Mol	Chain	Residues	Atoms			ZeroOcc	AltConf
5	B	1	Total	C	O	0	0
			4	2	2		
5	B	1	Total	C	O	0	0
			4	2	2		
5	B	1	Total	C	O	0	0
			4	2	2		
5	B	1	Total	C	O	0	0
			4	2	2		

- Molecule 6 is CHLORIDE ION (three-letter code: CL) (formula: Cl).

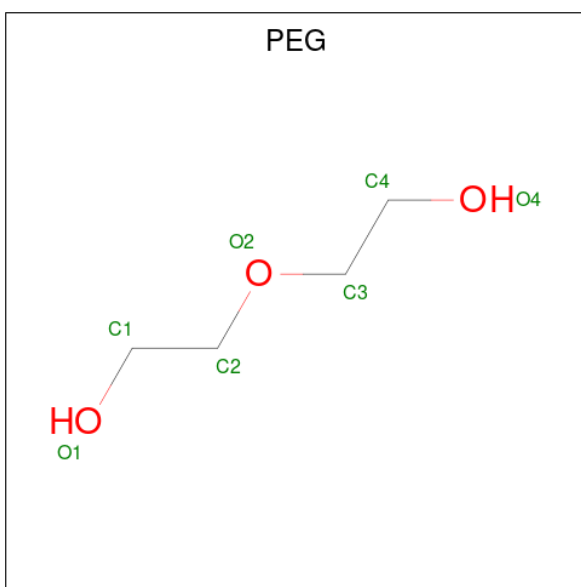
Mol	Chain	Residues	Atoms		ZeroOcc	AltConf
6	A	3	Total	Cl	0	1
			4	4		
6	B	4	Total	Cl	0	0
			4	4		

- Molecule 7 is (2E)-2-[(3-hydroxy-2-methyl-5-[(phosphonoxy)methyl]pyridin-4-yl)methyl]imino-3-[(2-hydroxyphenyl)amino]propanoic acid (three-letter code: 1D0) (formula: C<sub>17</sub>H<sub>20</sub>N<sub>3</sub>O<sub>8</sub>P) (labeled as "Ligand of Interest" by depositor).



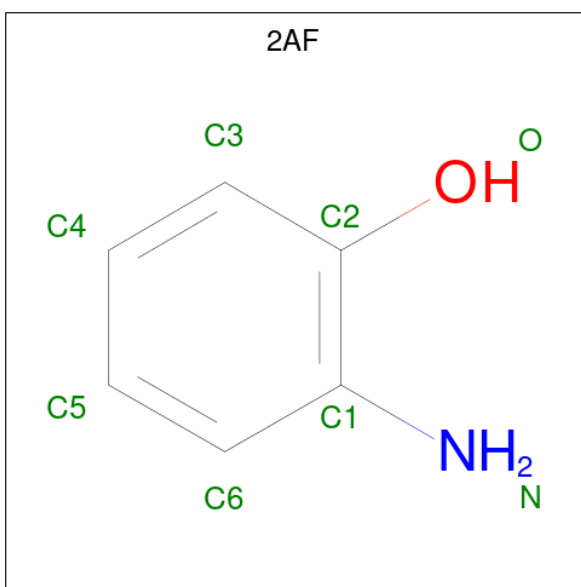
Mol	Chain	Residues	Atoms					ZeroOcc	AltConf
7	B	1	Total	C	N	O	P	0	0
			29	17	3	8	1		

- Molecule 8 is DI(HYDROXYETHYL)ETHER (three-letter code: PEG) (formula: C<sub>4</sub>H<sub>10</sub>O<sub>3</sub>).



Mol	Chain	Residues	Atoms			ZeroOcc	AltConf
8	B	1	Total	C	O	0	0
			7	4	3		
8	B	1	Total	C	O	0	1
			14	8	6		
8	B	1	Total	C	O	0	0
			7	4	3		

- Molecule 9 is 2-AMINOPHENOL (three-letter code: 2AF) (formula:  $C_6H_7NO$ ).



Mol	Chain	Residues	Atoms				ZeroOcc	AltConf
9	B	1	Total	C	N	O	0	0
			8	6	1	1		



- Molecule 10 is CESIUM ION (three-letter code: CS) (formula: Cs) (labeled as "Ligand of Interest" by depositor).

Mol	Chain	Residues	Atoms		ZeroOcc	AltConf
10	B	2	Total 4	Cs 4	0	2

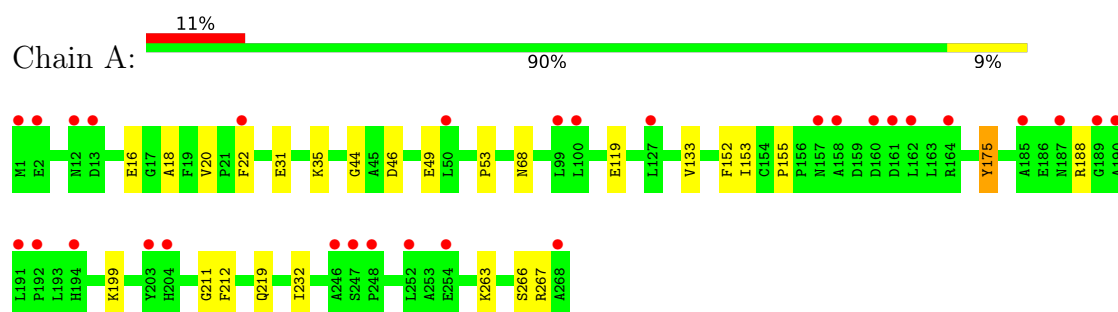
- Molecule 11 is water.

Mol	Chain	Residues	Atoms		ZeroOcc	AltConf
11	A	245	Total 253	O 253	0	8
11	B	415	Total 431	O 431	0	16

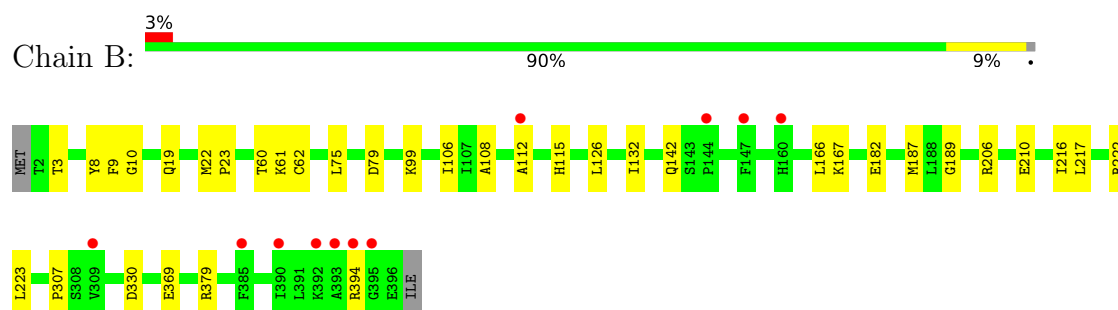
### 3 Residue-property plots [i](#)

These plots are drawn for all protein, RNA, DNA and oligosaccharide chains in the entry. The first graphic for a chain summarises the proportions of the various outlier classes displayed in the second graphic. The second graphic shows the sequence view annotated by issues in geometry and electron density. Residues are color-coded according to the number of geometric quality criteria for which they contain at least one outlier: green = 0, yellow = 1, orange = 2 and red = 3 or more. A red dot above a residue indicates a poor fit to the electron density ( $RSRZ > 2$ ). Stretches of 2 or more consecutive residues without any outlier are shown as a green connector. Residues present in the sample, but not in the model, are shown in grey.

#### • Molecule 1: Tryptophan synthase alpha chain



#### • Molecule 2: Tryptophan synthase beta chain



## 4 Data and refinement statistics

Property	Value	Source
Space group	C 1 2 1	Depositor
Cell constants a, b, c, $\alpha$ , $\beta$ , $\gamma$	184.09Å 60.59Å 67.33Å 90.00° 94.63° 90.00°	Depositor
Resolution (Å)	29.31 – 1.60 29.31 – 1.60	Depositor EDS
% Data completeness (in resolution range)	98.9 (29.31-1.60) 99.0 (29.31-1.60)	Depositor EDS
$R_{merge}$	0.04	Depositor
$R_{sym}$	0.04	Depositor
$\langle I/\sigma(I) \rangle$ <sup>1</sup>	1.74 (at 1.60Å)	Xtriage
Refinement program	PHENIX 1.17.1-3660	Depositor
R, $R_{free}$	0.171 , 0.196 0.171 , 0.196	Depositor DCC
$R_{free}$ test set	4730 reflections (4.90%)	wwPDB-VP
Wilson B-factor (Å <sup>2</sup> )	22.3	Xtriage
Anisotropy	0.037	Xtriage
Bulk solvent $k_{sol}$ (e/Å <sup>3</sup> ), $B_{sol}$ (Å <sup>2</sup> )	0.30 , 54.4	EDS
L-test for twinning <sup>2</sup>	$\langle  L  \rangle = 0.50$ , $\langle L^2 \rangle = 0.33$	Xtriage
Estimated twinning fraction	No twinning to report.	Xtriage
$F_o, F_c$ correlation	0.97	EDS
Total number of atoms	6031	wwPDB-VP
Average B, all atoms (Å <sup>2</sup> )	32.0	wwPDB-VP

Xtriage's analysis on translational NCS is as follows: *The largest off-origin peak in the Patterson function is 5.40% of the height of the origin peak. No significant pseudotranslation is detected.*

<sup>1</sup>Intensities estimated from amplitudes.

<sup>2</sup>Theoretical values of  $\langle |L| \rangle$ ,  $\langle L^2 \rangle$  for acentric reflections are 0.5, 0.333 respectively for untwinned datasets, and 0.375, 0.2 for perfectly twinned datasets.

## 5 Model quality [i](#)

### 5.1 Standard geometry [i](#)

Bond lengths and bond angles in the following residue types are not validated in this section: F9F, CL, CS, PEG, DMS, 1D0, EDO, 2AF

The Z score for a bond length (or angle) is the number of standard deviations the observed value is removed from the expected value. A bond length (or angle) with  $|Z| > 5$  is considered an outlier worth inspection. RMSZ is the root-mean-square of all Z scores of the bond lengths (or angles).

Mol	Chain	Bond lengths		Bond angles	
		RMSZ	# Z  >5	RMSZ	# Z  >5
1	A	0.32	0/2046	0.51	0/2785
2	B	0.41	0/3196	0.61	0/4314
All	All	0.38	0/5242	0.57	0/7099

There are no bond length outliers.

There are no bond angle outliers.

There are no chirality outliers.

There are no planarity outliers.

### 5.2 Too-close contacts [i](#)

In the following table, the Non-H and H(model) columns list the number of non-hydrogen atoms and hydrogen atoms in the chain respectively. The H(added) column lists the number of hydrogen atoms added and optimized by MolProbity. The Clashes column lists the number of clashes within the asymmetric unit, whereas Symm-Clashes lists symmetry-related clashes.

Mol	Chain	Non-H	H(model)	H(added)	Clashes	Symm-Clashes
1	A	2007	0	1973	19	0
2	B	3137	0	3095	37	0
3	A	16	0	24	1	0
3	B	60	0	90	2	0
4	A	22	0	9	1	0
5	A	12	0	18	8	0
5	B	16	0	24	0	0
6	A	4	0	0	0	0
6	B	4	0	0	0	0
7	B	29	0	17	2	0
8	B	28	0	40	10	0

*Continued on next page...*

*Continued from previous page...*

Mol	Chain	Non-H	H(model)	H(added)	Clashes	Symm-Clashes
9	B	8	0	7	1	0
10	B	4	0	0	0	0
11	A	253	0	0	0	0
11	B	431	0	0	7	0
All	All	6031	0	5297	58	0

The all-atom clashscore is defined as the number of clashes found per 1000 atoms (including hydrogen atoms). The all-atom clashscore for this structure is 5.

All (58) close contacts within the same asymmetric unit are listed below, sorted by their clash magnitude.

Atom-1	Atom-2	Interatomic distance (Å)	Clash overlap (Å)
2:B:60:THR:HG23	8:B:402:PEG:H42	1.64	0.80
2:B:222:ARG:NH2	11:B:501:HOH:O	2.23	0.71
5:A:406:EDO:H21	2:B:19:GLN:HE21	1.54	0.71
2:B:142:GLN:NE2	11:B:502:HOH:O	2.25	0.69
5:A:406:EDO:C2	2:B:19:GLN:HE21	2.06	0.68
2:B:10:GLY:H	8:B:403[A]:PEG:H31	1.60	0.67
1:A:119:GLU:HG3	3:A:401:DMS:H13	1.82	0.61
2:B:61:LYS:O	8:B:402:PEG:H11	2.01	0.61
2:B:206:ARG:HH22	8:B:404:PEG:H11	1.65	0.61
1:A:155:PRO:HG3	5:A:406:EDO:H11	1.85	0.58
2:B:369:GLU:H	2:B:369:GLU:CD	2.06	0.58
2:B:217[B]:LEU:HG	11:B:762:HOH:O	2.06	0.55
1:A:133[B]:VAL:HG12	1:A:152:PHE:CD2	2.42	0.54
2:B:112[A]:ALA:HA	2:B:142:GLN:HG3	1.89	0.54
5:A:406:EDO:H22	2:B:22:MET:HB2	1.92	0.52
1:A:133[B]:VAL:HG12	1:A:152:PHE:HD2	1.76	0.50
1:A:153:ILE:HD13	1:A:175:TYR:HB3	1.94	0.50
5:A:406:EDO:H12	2:B:23:PRO:HD3	1.93	0.50
2:B:206:ARG:O	2:B:210:GLU:HG3	2.11	0.50
2:B:3:THR:O	9:B:428:2AF:H4	2.11	0.49
1:A:211:GLY:O	1:A:212:PHE:HB2	2.13	0.49
2:B:167[B]:LYS:HD2	2:B:307:PRO:HG3	1.94	0.49
2:B:115:HIS:CE1	2:B:189:GLY:HA2	2.48	0.48
1:A:133[A]:VAL:HG23	2:B:19:GLN:OE1	2.14	0.48
2:B:330:ASP:OD1	2:B:394:ARG:NH2	2.46	0.48
1:A:175:TYR:CE2	4:A:403:F9F:H5	2.50	0.47
3:B:411:DMS:H23	11:B:841[B]:HOH:O	2.14	0.47
1:A:16:GLU:HB2	1:A:267:ARG:HA	1.96	0.46
2:B:223:LEU:HD23	11:B:762:HOH:O	2.16	0.46

*Continued on next page...*

*Continued from previous page...*

Atom-1	Atom-2	Interatomic distance (Å)	Clash overlap (Å)
1:A:53:PRO:HA	1:A:68:ASN:OD1	2.15	0.46
1:A:199:LYS:HA	1:A:199:LYS:HD2	1.76	0.46
1:A:22:PHE:HA	1:A:49:GLU:O	2.16	0.45
2:B:99:LYS:HD2	2:B:126:LEU:HB3	1.97	0.45
8:B:403[A]:PEG:H32	11:B:772:HOH:O	2.16	0.45
1:A:188:ARG:HD3	1:A:219:GLN:NE2	2.32	0.45
1:A:263:LYS:NZ	1:A:266:SER:OG	2.42	0.45
2:B:9:PHE:HA	8:B:403[B]:PEG:H11	1.99	0.45
2:B:166:LEU:HD21	7:B:401:1D0:C6	2.47	0.45
2:B:79:ASP:HB2	2:B:379:ARG:HB3	1.99	0.44
2:B:216[B]:ILE:HG22	2:B:222:ARG:O	2.18	0.44
2:B:112[A]:ALA:O	2:B:142:GLN:HB3	2.18	0.44
2:B:106:ILE:HG21	2:B:187:MET:HE3	2.00	0.43
2:B:10:GLY:H	8:B:403[A]:PEG:C3	2.28	0.43
8:B:402:PEG:H12	11:B:687:HOH:O	2.17	0.43
2:B:112[B]:ALA:HB3	7:B:401:1D0:N2	2.34	0.43
1:A:44:GLY:O	1:A:263:LYS:HD3	2.19	0.43
2:B:62[A]:CYS:SG	2:B:75:LEU:HG	2.59	0.43
2:B:108:ALA:HB3	2:B:132[A]:ILE:HD13	2.01	0.42
1:A:18:ALA:HA	1:A:46:ASP:OD2	2.20	0.42
1:A:31:GLU:O	1:A:35:LYS:HG3	2.18	0.41
5:A:406:EDO:H12	2:B:23:PRO:CD	2.50	0.41
2:B:108:ALA:HB3	2:B:132[A]:ILE:CD1	2.51	0.41
2:B:182:GLU:HG2	3:B:420:DMS:C2	2.51	0.41
1:A:20:VAL:O	1:A:232:ILE:HA	2.21	0.41
1:A:155:PRO:CG	5:A:406:EDO:H11	2.51	0.41
2:B:10:GLY:N	8:B:403[A]:PEG:H31	2.31	0.41
5:A:406:EDO:H22	2:B:19:GLN:HE21	1.86	0.40
2:B:8:TYR:O	8:B:403[A]:PEG:H42	2.21	0.40

There are no symmetry-related clashes.

## 5.3 Torsion angles ⓘ

### 5.3.1 Protein backbone ⓘ

In the following table, the Percentiles column shows the percent Ramachandran outliers of the chain as a percentile score with respect to all X-ray entries followed by that with respect to entries of similar resolution.

The Analysed column shows the number of residues for which the backbone conformation was analysed, and the total number of residues.

Mol	Chain	Analysed	Favoured	Allowed	Outliers	Percentiles	
1	A	269/268 (100%)	265 (98%)	4 (2%)	0	100	100
2	B	412/397 (104%)	403 (98%)	9 (2%)	0	100	100
All	All	681/665 (102%)	668 (98%)	13 (2%)	0	100	100

There are no Ramachandran outliers to report.

### 5.3.2 Protein sidechains ⓘ

In the following table, the Percentiles column shows the percent sidechain outliers of the chain as a percentile score with respect to all X-ray entries followed by that with respect to entries of similar resolution.

The Analysed column shows the number of residues for which the sidechain conformation was analysed, and the total number of residues.

Mol	Chain	Analysed	Rotameric	Outliers	Percentiles	
1	A	202/208 (97%)	201 (100%)	1 (0%)	88	80
2	B	323/310 (104%)	323 (100%)	0	100	100
All	All	525/518 (101%)	524 (100%)	1 (0%)	93	88

All (1) residues with a non-rotameric sidechain are listed below:

Mol	Chain	Res	Type
1	A	175	TYR

Sometimes sidechains can be flipped to improve hydrogen bonding and reduce clashes. There are no such sidechains identified.

### 5.3.3 RNA ⓘ

There are no RNA molecules in this entry.

## 5.4 Non-standard residues in protein, DNA, RNA chains ⓘ

There are no non-standard protein/DNA/RNA residues in this entry.

### 5.5 Carbohydrates ⓘ

There are no monosaccharides in this entry.

## 5.6 Ligand geometry

Of 45 ligands modelled in this entry, 12 are monoatomic - leaving 33 for Mogul analysis.

In the following table, the Counts columns list the number of bonds (or angles) for which Mogul statistics could be retrieved, the number of bonds (or angles) that are observed in the model and the number of bonds (or angles) that are defined in the Chemical Component Dictionary. The Link column lists molecule types, if any, to which the group is linked. The Z score for a bond length (or angle) is the number of standard deviations the observed value is removed from the expected value. A bond length (or angle) with  $|Z| > 2$  is considered an outlier worth inspection. RMSZ is the root-mean-square of all Z scores of the bond lengths (or angles).

Mol	Type	Chain	Res	Link	Bond lengths			Bond angles		
					Counts	RMSZ	# Z  > 2	Counts	RMSZ	# Z  > 2
5	EDO	B	406	-	3,3,3	0.44	0	2,2,2	0.46	0
3	DMS	B	421	-	3,3,3	0.67	0	3,3,3	0.54	0
3	DMS	B	410	-	3,3,3	0.67	0	3,3,3	0.56	0
5	EDO	B	405	-	3,3,3	0.39	0	2,2,2	0.37	0
5	EDO	A	406	-	3,3,3	0.48	0	2,2,2	0.40	0
3	DMS	B	412	-	3,3,3	0.66	0	3,3,3	0.49	0
3	DMS	B	416	-	3,3,3	0.64	0	3,3,3	0.46	0
3	DMS	B	409	-	3,3,3	0.67	0	3,3,3	0.52	0
3	DMS	A	401	-	3,3,3	0.62	0	3,3,3	0.62	0
5	EDO	B	407	-	3,3,3	0.51	0	2,2,2	0.15	0
4	F9F	A	403	-	22,22,22	0.53	0	32,33,33	0.60	0
5	EDO	B	408	-	3,3,3	0.54	0	2,2,2	0.26	0
7	1D0	B	401	-	27,30,30	2.32	1 (3%)	33,42,42	0.92	1 (3%)
3	DMS	B	423	-	3,3,3	0.67	0	3,3,3	0.59	0
3	DMS	B	414	-	3,3,3	0.71	0	3,3,3	0.41	0
3	DMS	A	407	-	3,3,3	0.66	0	3,3,3	0.57	0
9	2AF	B	428	-	8,8,8	1.25	2 (25%)	9,10,10	0.80	1 (11%)
5	EDO	A	404	-	3,3,3	0.45	0	2,2,2	0.23	0
3	DMS	A	408	-	3,3,3	0.58	0	3,3,3	0.53	0
3	DMS	B	417	-	3,3,3	0.68	0	3,3,3	0.53	0
3	DMS	B	418	-	3,3,3	0.67	0	3,3,3	0.46	0
3	DMS	A	402	-	3,3,3	0.67	0	3,3,3	0.59	0
8	PEG	B	404	-	6,6,6	0.51	0	5,5,5	0.13	0
3	DMS	B	422	-	3,3,3	0.67	0	3,3,3	0.50	0
8	PEG	B	402	-	6,6,6	0.50	0	5,5,5	0.29	0
8	PEG	B	403[A]	-	6,6,6	0.47	0	5,5,5	0.51	0
3	DMS	B	413	-	3,3,3	0.68	0	3,3,3	0.37	0
3	DMS	B	415	-	3,3,3	0.70	0	3,3,3	0.68	0
3	DMS	B	411	-	3,3,3	0.67	0	3,3,3	0.51	0
5	EDO	A	405	-	3,3,3	0.51	0	2,2,2	0.21	0
8	PEG	B	403[B]	-	6,6,6	0.51	0	5,5,5	0.34	0
3	DMS	B	419	-	3,3,3	0.65	0	3,3,3	0.58	0



Mol	Type	Chain	Res	Link	Bond lengths			Bond angles		
					Counts	RMSZ	# Z  > 2	Counts	RMSZ	# Z  > 2
3	DMS	B	420	-	3,3,3	0.64	0	3,3,3	0.54	0

In the following table, the Chirals column lists the number of chiral outliers, the number of chiral centers analysed, the number of these observed in the model and the number defined in the Chemical Component Dictionary. Similar counts are reported in the Torsion and Rings columns. '-' means no outliers of that kind were identified.

Mol	Type	Chain	Res	Link	Chirals	Torsions	Rings
5	EDO	B	406	-	-	0/1/1/1	-
8	PEG	B	403[B]	-	-	1/4/4/4	-
7	1D0	B	401	-	-	4/13/20/20	0/2/2/2
5	EDO	B	405	-	-	1/1/1/1	-
5	EDO	A	406	-	-	0/1/1/1	-
8	PEG	B	404	-	-	1/4/4/4	-
8	PEG	B	402	-	-	1/4/4/4	-
8	PEG	B	403[A]	-	-	2/4/4/4	-
9	2AF	B	428	-	-	-	0/1/1/1
5	EDO	B	407	-	-	1/1/1/1	-
4	F9F	A	403	-	-	6/20/20/20	0/1/1/1
5	EDO	A	405	-	-	1/1/1/1	-
5	EDO	A	404	-	-	0/1/1/1	-
5	EDO	B	408	-	-	1/1/1/1	-

All (3) bond length outliers are listed below:

Mol	Chain	Res	Type	Atoms	Z	Observed(Å)	Ideal(Å)
7	B	401	1D0	C-CA	-11.42	1.34	1.52
9	B	428	2AF	C1-N	2.37	1.45	1.37
9	B	428	2AF	O-C2	2.14	1.40	1.36

All (2) bond angle outliers are listed below:

Mol	Chain	Res	Type	Atoms	Z	Observed(°)	Ideal(°)
7	B	401	1D0	O-C2-C3	2.14	125.16	119.33
9	B	428	2AF	O-C2-C1	2.09	119.76	116.25

There are no chirality outliers.

All (19) torsion outliers are listed below:

Mol	Chain	Res	Type	Atoms
7	B	401	1D0	C51-C41-C4A-N2

*Continued on next page...*

*Continued from previous page...*

Mol	Chain	Res	Type	Atoms
7	B	401	1D0	C31-C41-C4A-N2
7	B	401	1D0	C6-C1-N-CB
7	B	401	1D0	C2-C1-N-CB
5	A	405	EDO	O1-C1-C2-O2
5	B	407	EDO	O1-C1-C2-O2
8	B	403[A]	PEG	O1-C1-C2-O2
8	B	403[A]	PEG	O2-C3-C4-O4
5	B	405	EDO	O1-C1-C2-O2
4	A	403	F9F	C3-C4-S12-O21
5	B	408	EDO	O1-C1-C2-O2
4	A	403	F9F	C5-C4-S12-O21
8	B	402	PEG	O1-C1-C2-O2
4	A	403	F9F	N13-C14-C15-O16
8	B	404	PEG	O2-C3-C4-O4
4	A	403	F9F	C6-C1-O7-C8
4	A	403	F9F	C2-C1-O7-C8
8	B	403[B]	PEG	C4-C3-O2-C2
4	A	403	F9F	C3-C4-S12-N13

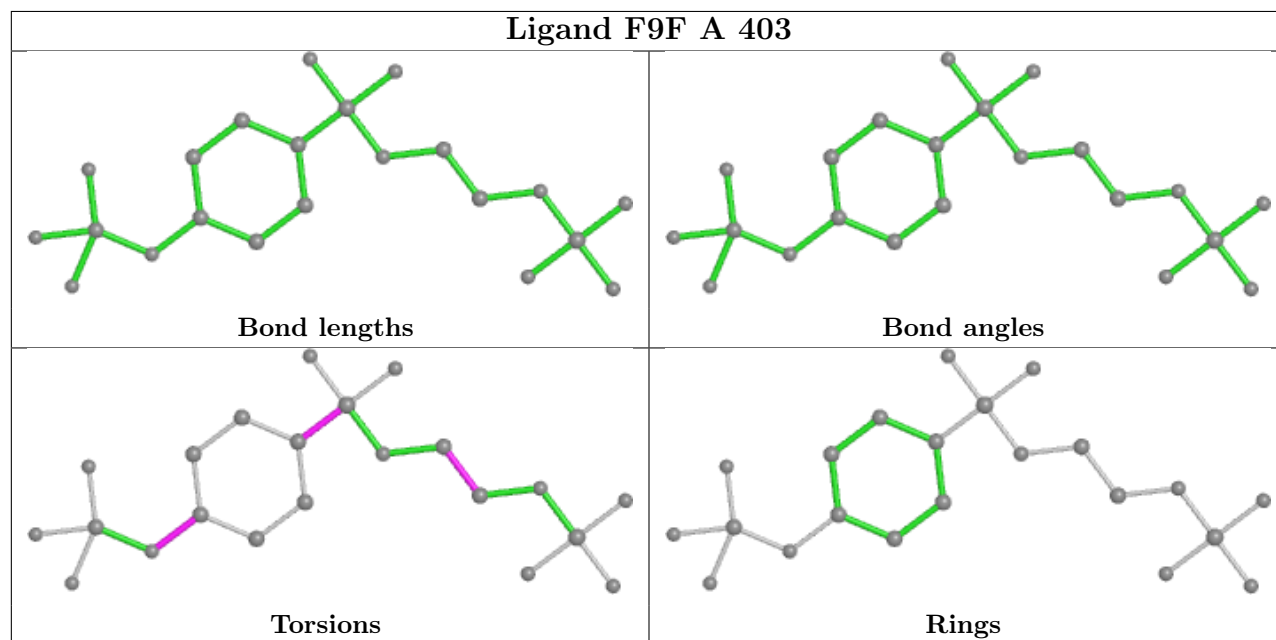
There are no ring outliers.

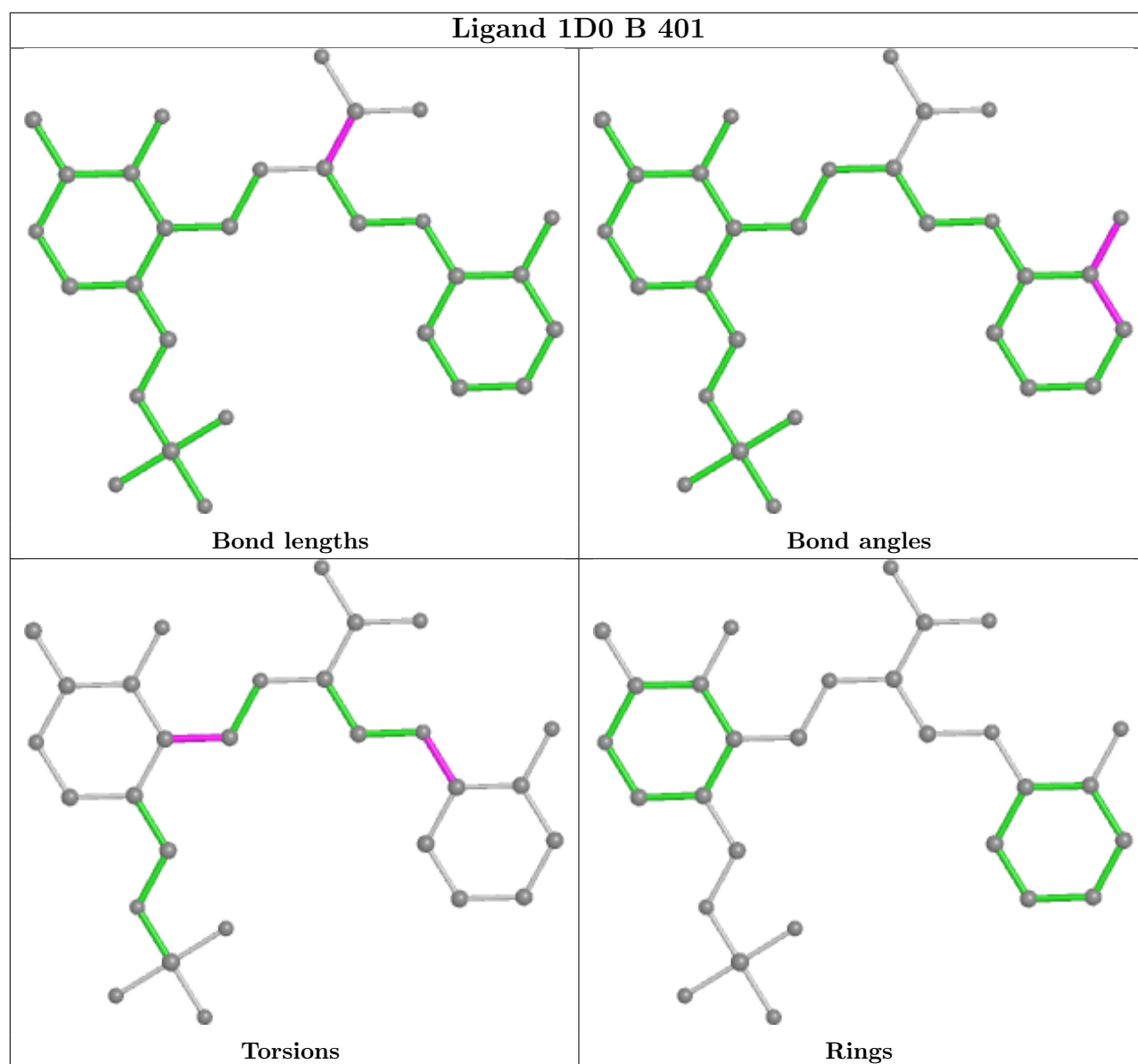
11 monomers are involved in 25 short contacts:

Mol	Chain	Res	Type	Clashes	Symm-Clashes
5	A	406	EDO	8	0
3	A	401	DMS	1	0
4	A	403	F9F	1	0
7	B	401	1D0	2	0
9	B	428	2AF	1	0
8	B	404	PEG	1	0
8	B	402	PEG	3	0
8	B	403[A]	PEG	5	0
3	B	411	DMS	1	0
8	B	403[B]	PEG	1	0
3	B	420	DMS	1	0

The following is a two-dimensional graphical depiction of Mogul quality analysis of bond lengths, bond angles, torsion angles, and ring geometry for all instances of the Ligand of Interest. In addition, ligands with molecular weight > 250 and outliers as shown on the validation Tables will also be included. For torsion angles, if less than 5% of the Mogul distribution of torsion angles is within 10 degrees of the torsion angle in question, then that torsion angle is considered an outlier. Any bond that is central to one or more torsion angles identified as an outlier by Mogul will be highlighted in the graph. For rings, the root-mean-square deviation (RMSD) between the ring

in question and similar rings identified by Mogul is calculated over all ring torsion angles. If the average RMSD is greater than 60 degrees and the minimal RMSD between the ring in question and any Mogul-identified rings is also greater than 60 degrees, then that ring is considered an outlier. The outliers are highlighted in purple. The color gray indicates Mogul did not find sufficient equivalents in the CSD to analyse the geometry.





## 5.7 Other polymers [i](#)

There are no such residues in this entry.

## 5.8 Polymer linkage issues [i](#)

There are no chain breaks in this entry.

## 6 Fit of model and data

### 6.1 Protein, DNA and RNA chains

In the following table, the column labelled ‘#RSRZ> 2’ contains the number (and percentage) of RSRZ outliers, followed by percent RSRZ outliers for the chain as percentile scores relative to all X-ray entries and entries of similar resolution. The OWAB column contains the minimum, median, 95<sup>th</sup> percentile and maximum values of the occupancy-weighted average B-factor per residue. The column labelled ‘Q< 0.9’ lists the number of (and percentage) of residues with an average occupancy less than 0.9.

Mol	Chain	Analysed	<RSRZ>	#RSRZ>2	OWAB(Å <sup>2</sup> )	Q<0.9
1	A	268/268 (100%)	0.66	30 (11%) 5 4	22, 35, 62, 88	0
2	B	395/397 (99%)	0.11	11 (2%) 53 50	16, 22, 41, 75	0
All	All	663/665 (99%)	0.33	41 (6%) 20 18	16, 28, 57, 88	0

All (41) RSRZ outliers are listed below:

Mol	Chain	Res	Type	RSRZ
1	A	190	ALA	11.1
2	B	147[A]	PHE	5.5
1	A	1	MET	5.2
1	A	191	LEU	5.2
1	A	100	LEU	4.5
2	B	144	PRO	4.4
1	A	203	TYR	4.3
1	A	189	GLY	4.1
2	B	395	GLY	4.1
1	A	204	HIS	4.0
1	A	13	ASP	4.0
1	A	99	LEU	3.7
1	A	252	LEU	3.6
1	A	161	ASP	3.4
2	B	393	ALA	3.3
1	A	268	ALA	3.2
1	A	246	ALA	3.1
2	B	112[A]	ALA	3.1
1	A	22	PHE	3.1
2	B	385	PHE	3.0
2	B	394	ARG	3.0
1	A	50	LEU	2.8
1	A	247	SER	2.8
1	A	194	HIS	2.7

*Continued on next page...*

*Continued from previous page...*

Mol	Chain	Res	Type	RSRZ
1	A	192	PRO	2.7
1	A	160	ASP	2.7
2	B	390	ILE	2.6
1	A	187	ASN	2.6
1	A	254	GLU	2.5
2	B	160	HIS	2.4
1	A	2	GLU	2.4
2	B	392	LYS	2.4
1	A	162	LEU	2.4
1	A	185	ALA	2.4
1	A	12	ASN	2.3
2	B	309	VAL	2.3
1	A	248	PRO	2.3
1	A	164	ARG	2.2
1	A	157	ASN	2.2
1	A	158	ALA	2.2
1	A	127	LEU	2.2

## 6.2 Non-standard residues in protein, DNA, RNA chains [i](#)

There are no non-standard protein/DNA/RNA residues in this entry.

## 6.3 Carbohydrates [i](#)

There are no monosaccharides in this entry.

## 6.4 Ligands [i](#)

In the following table, the Atoms column lists the number of modelled atoms in the group and the number defined in the chemical component dictionary. The B-factors column lists the minimum, median, 95<sup>th</sup> percentile and maximum values of B factors of atoms in the group. The column labelled 'Q< 0.9' lists the number of atoms with occupancy less than 0.9.

Mol	Type	Chain	Res	Atoms	RSCC	RSR	B-factors(Å <sup>2</sup> )	Q<0.9
5	EDO	B	408	4/4	0.50	0.17	50,52,55,56	0
3	DMS	B	417	4/4	0.57	0.26	64,65,65,76	0
5	EDO	B	407	4/4	0.58	0.21	52,58,58,61	0
5	EDO	A	406	4/4	0.68	0.24	42,53,54,56	0
6	CL	B	427	1/1	0.69	0.10	83,83,83,83	0
5	EDO	A	404	4/4	0.71	0.27	56,58,59,59	0

*Continued on next page...*

*Continued from previous page...*

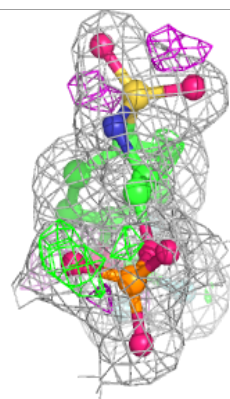
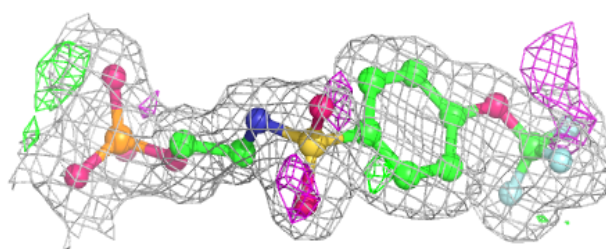
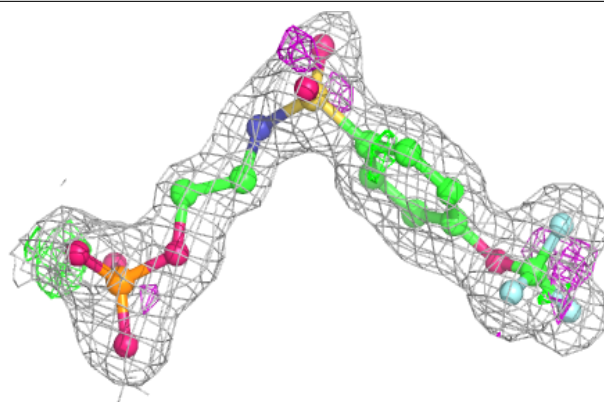
Mol	Type	Chain	Res	Atoms	RSCC	RSR	B-factors( $\text{\AA}^2$ )	Q<0.9
9	2AF	B	428	8/8	0.71	0.22	42,54,61,64	0
5	EDO	A	405	4/4	0.73	0.17	46,50,55,57	0
3	DMS	B	415	4/4	0.75	0.32	46,55,58,62	0
6	CL	A	410	1/1	0.77	0.07	75,75,75,75	0
3	DMS	B	421	4/4	0.78	0.24	78,81,81,85	0
3	DMS	A	407	4/4	0.80	0.20	67,76,77,77	0
3	DMS	B	422	4/4	0.80	0.20	90,92,94,94	0
3	DMS	A	408	4/4	0.81	0.23	58,68,73,75	0
3	DMS	B	423	4/4	0.82	0.29	76,81,82,82	0
6	CL	A	411	1/1	0.82	0.10	81,81,81,81	0
3	DMS	A	401	4/4	0.83	0.18	47,51,52,65	4
3	DMS	B	409	4/4	0.83	0.19	75,79,80,83	0
3	DMS	B	420	4/4	0.83	0.28	67,83,83,86	0
3	DMS	B	419	4/4	0.85	0.19	63,69,71,72	0
3	DMS	B	412	4/4	0.86	0.25	77,78,78,79	0
8	PEG	B	402	7/7	0.86	0.17	33,48,57,64	0
8	PEG	B	404	7/7	0.86	0.23	30,49,59,67	0
6	CL	B	426	1/1	0.86	0.05	67,67,67,67	0
3	DMS	B	411	4/4	0.87	0.15	50,56,59,63	0
5	EDO	B	406	4/4	0.88	0.12	45,51,56,57	0
8	PEG	B	403[A]	7/7	0.89	0.15	20,24,35,42	7
8	PEG	B	403[B]	7/7	0.89	0.15	17,30,34,35	7
6	CL	B	424	1/1	0.89	0.14	68,68,68,68	0
3	DMS	B	410	4/4	0.89	0.15	44,46,50,56	0
5	EDO	B	405	4/4	0.90	0.09	38,39,40,44	0
3	DMS	B	414	4/4	0.92	0.18	26,41,45,46	0
3	DMS	B	418	4/4	0.92	0.19	58,64,66,73	0
4	F9F	A	403	22/22	0.94	0.10	24,29,31,33	0
7	1D0	B	401	29/29	0.95	0.12	17,19,30,34	0
3	DMS	B	416	4/4	0.95	0.13	56,58,58,60	0
6	CL	B	425	1/1	0.95	0.05	45,45,45,45	0
3	DMS	A	402	4/4	0.97	0.09	30,30,34,37	4
3	DMS	B	413	4/4	0.97	0.14	29,32,32,33	0
6	CL	A	409[A]	1/1	0.98	0.08	43,43,43,43	1
6	CL	A	409[B]	1/1	0.98	0.08	40,40,40,40	1
10	CS	B	429[A]	1/1	0.99	0.06	19,19,19,19	1
10	CS	B	429[B]	1/1	0.99	0.06	68,68,68,68	1
10	CS	B	430[A]	1/1	0.99	0.06	27,27,27,27	1
10	CS	B	430[B]	1/1	0.99	0.06	28,28,28,28	1

The following is a graphical depiction of the model fit to experimental electron density of all instances of the Ligand of Interest. In addition, ligands with molecular weight > 250 and outliers as shown on the geometry validation Tables will also be included. Each fit is shown from different

orientation to approximate a three-dimensional view.

**Electron density around F9F A 403:**

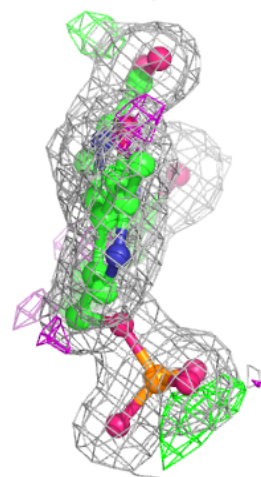
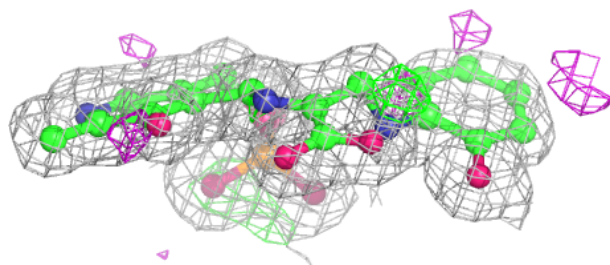
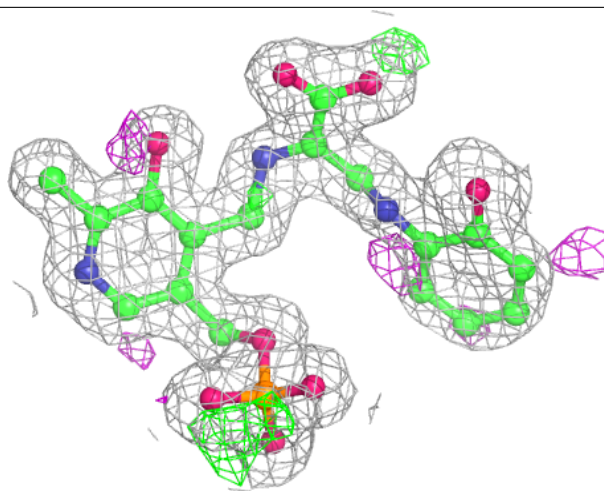
$2mF_o - DF_c$  (at 0.7 rmsd) in gray  
 $mF_o - DF_c$  (at 3 rmsd) in purple (negative)  
and green (positive)





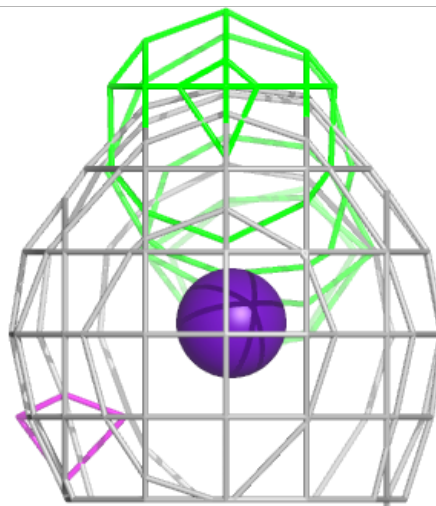
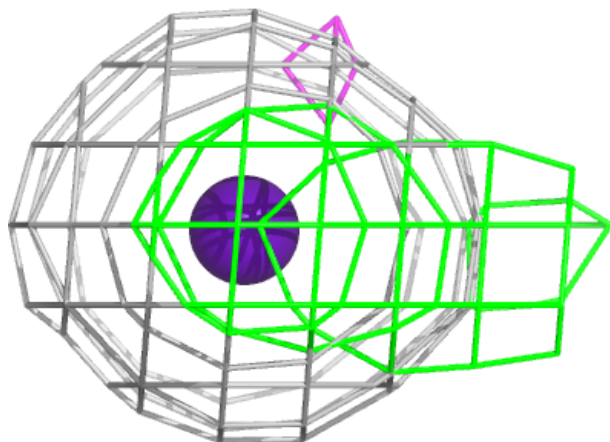
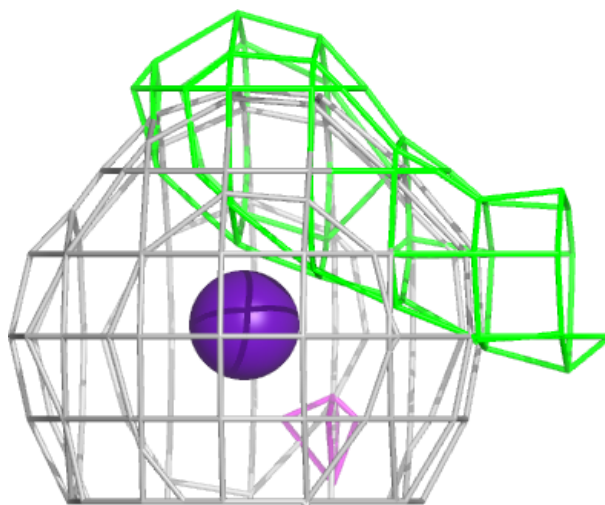
**Electron density around 1D0 B 401:**

$2mF_o-DF_c$  (at 0.7 rmsd) in gray  
 $mF_o-DF_c$  (at 3 rmsd) in purple (negative)  
and green (positive)



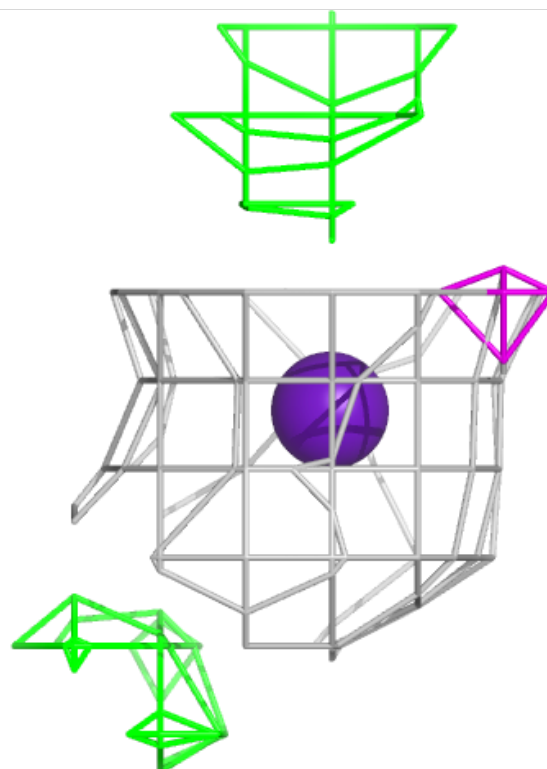
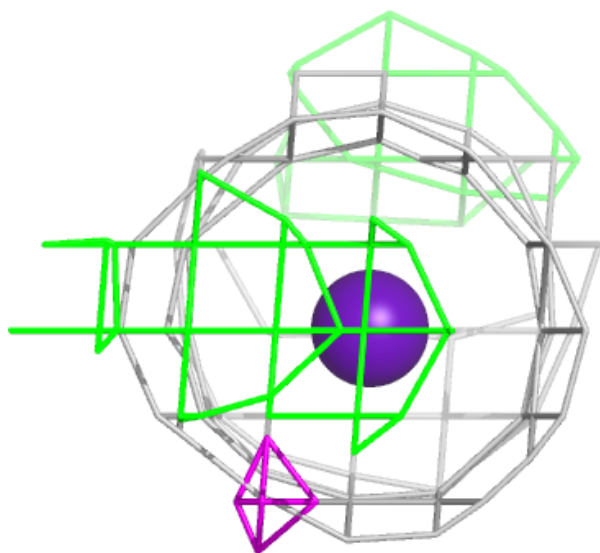
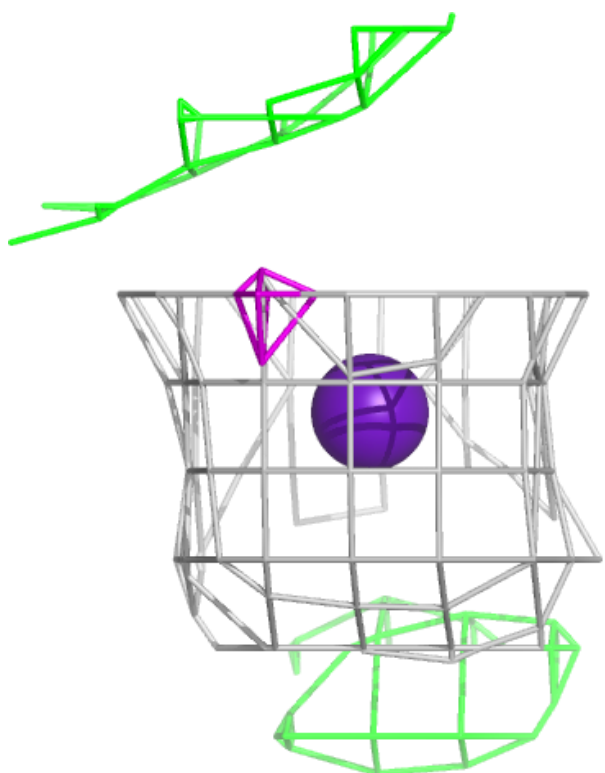
**Electron density around CS B 429 (A):**

$2mF_o-DF_c$  (at 0.7 rmsd) in gray  
 $mF_o-DF_c$  (at 3 rmsd) in purple (negative)  
and green (positive)



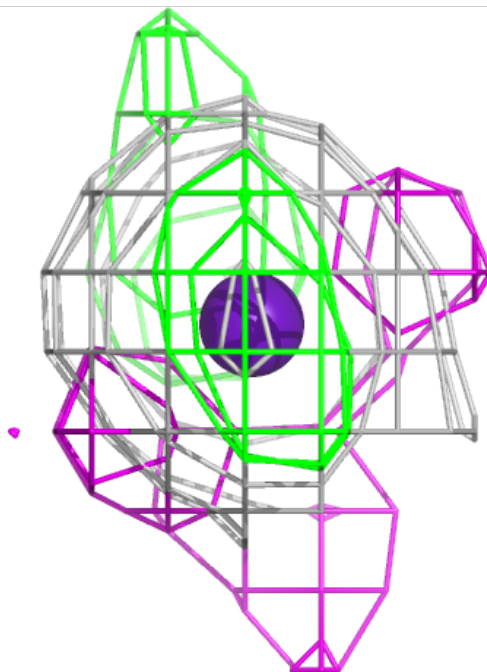
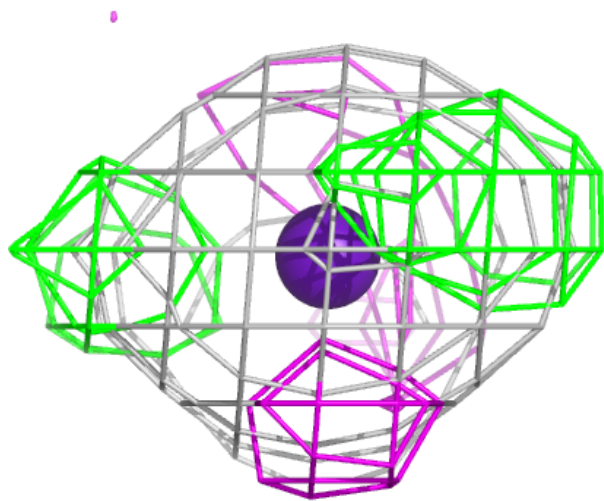
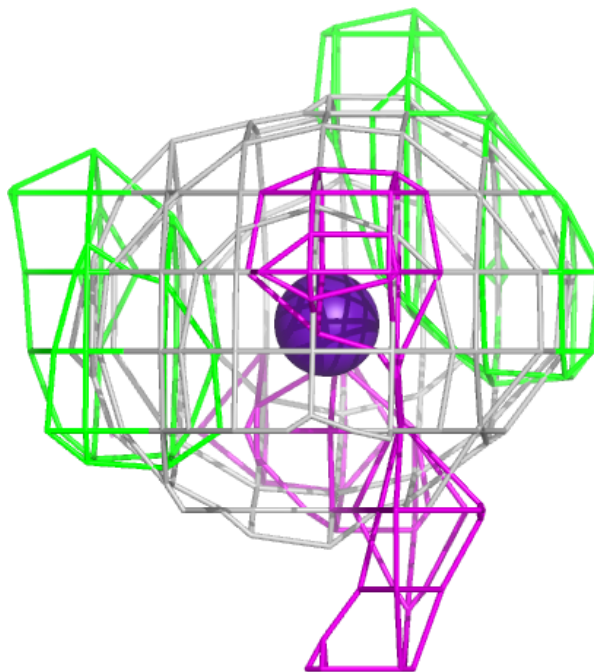
**Electron density around CS B 429 (B):**

$2mF_o-DF_c$  (at 0.7 rmsd) in gray  
 $mF_o-DF_c$  (at 3 rmsd) in purple (negative)  
and green (positive)



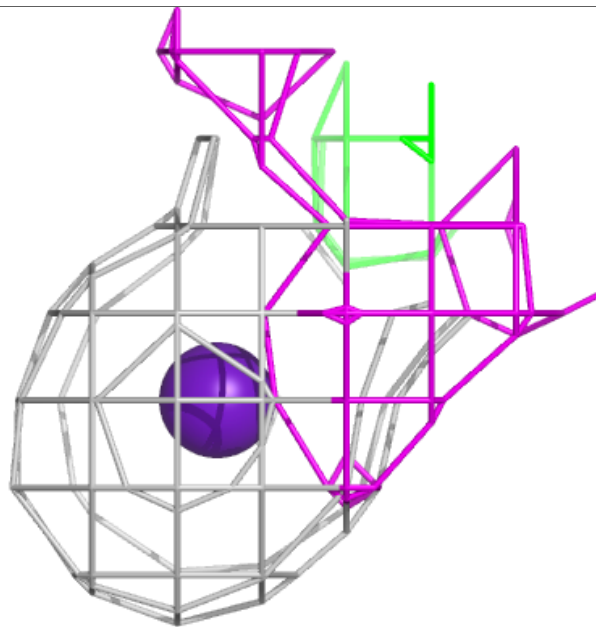
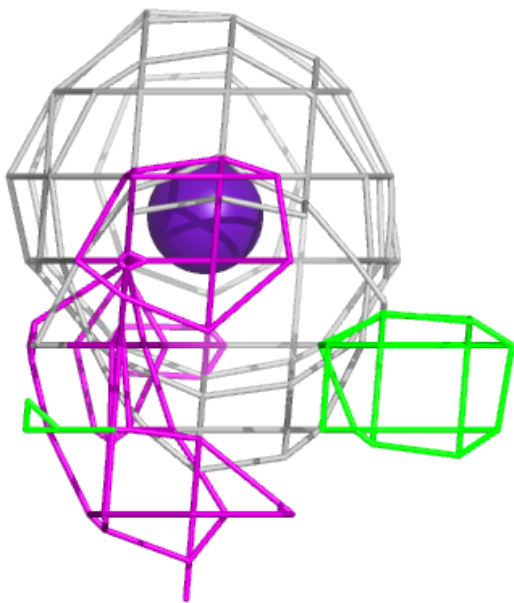
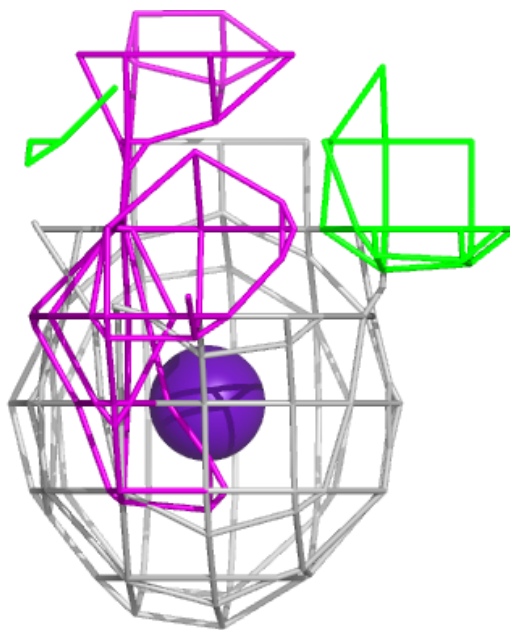
**Electron density around CS B 430 (A):**

$2mF_o-DF_c$  (at 0.7 rmsd) in gray  
 $mF_o-DF_c$  (at 3 rmsd) in purple (negative)  
and green (positive)



**Electron density around CS B 430 (B):**

$2mF_o - DF_c$  (at 0.7 rmsd) in gray  
 $mF_o - DF_c$  (at 3 rmsd) in purple (negative)  
and green (positive)



## 6.5 Other polymers [i](#)

There are no such residues in this entry.