



Full wwPDB X-ray Structure Validation Report ⓘ

Aug 21, 2020 – 02:16 AM BST

PDB ID : 4KCI
Title : Structure of neuronal nitric oxide synthase heme domain in complex with N,
N'-(ethane-1,2-diylbis(3,1-phenylene))bis(thiophene-2-carboximidamide)
Authors : Li, H.; Poulos, T.L.
Deposited on : 2013-04-24
Resolution : 2.27 Å(reported)

This is a Full wwPDB X-ray Structure Validation Report for a publicly released PDB entry.

We welcome your comments at validation@mail.wwpdb.org

A user guide is available at

<https://www.wwpdb.org/validation/2017/XrayValidationReportHelp>

with specific help available everywhere you see the ⓘ symbol.

The following versions of software and data (see [references ⓘ](#)) were used in the production of this report:

MolProbity : 4.02b-467
Mogul : 1.8.5 (274361), CSD as541be (2020)
Xtriage (Phenix) : 1.13
EDS : 2.13.1
buster-report : 1.1.7 (2018)
Percentile statistics : 20191225.v01 (using entries in the PDB archive December 25th 2019)
Refmac : 5.8.0158
CCP4 : 7.0.044 (Gargrove)
Ideal geometry (proteins) : Engh & Huber (2001)
Ideal geometry (DNA, RNA) : Parkinson et al. (1996)
Validation Pipeline (wwPDB-VP) : 2.13.1

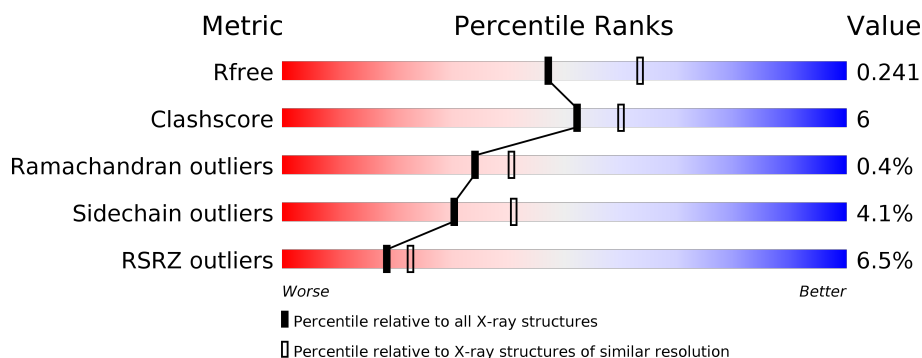
1 Overall quality at a glance

The following experimental techniques were used to determine the structure:

X-RAY DIFFRACTION

The reported resolution of this entry is 2.27 Å.

Percentile scores (ranging between 0-100) for global validation metrics of the entry are shown in the following graphic. The table shows the number of entries on which the scores are based.



Metric	Whole archive (#Entries)	Similar resolution (#Entries, resolution range(Å))
R_{free}	130704	6980 (2.30-2.26)
Clashscore	141614	7711 (2.30-2.26)
Ramachandran outliers	138981	7597 (2.30-2.26)
Sidechain outliers	138945	7598 (2.30-2.26)
RSRZ outliers	127900	6849 (2.30-2.26)

The table below summarises the geometric issues observed across the polymeric chains and their fit to the electron density. The red, orange, yellow and green segments on the lower bar indicate the fraction of residues that contain outliers for ≥ 3 , 2, 1 and 0 types of geometric quality criteria respectively. A grey segment represents the fraction of residues that are not modelled. The numeric value for each fraction is indicated below the corresponding segment, with a dot representing fractions $\leq 5\%$. The upper red bar (where present) indicates the fraction of residues that have poor fit to the electron density. The numeric value is given above the bar.

Mol	Chain	Length	Quality of chain
1	A	422	
1	B	422	

2 Entry composition [i](#)

There are 7 unique types of molecules in this entry. The entry contains 6969 atoms, of which 0 are hydrogens and 0 are deuteriums.

In the tables below, the ZeroOcc column contains the number of atoms modelled with zero occupancy, the AltConf column contains the number of residues with at least one atom in alternate conformation and the Trace column contains the number of residues modelled with at most 2 atoms.

- Molecule 1 is a protein called Nitric oxide synthase, brain.

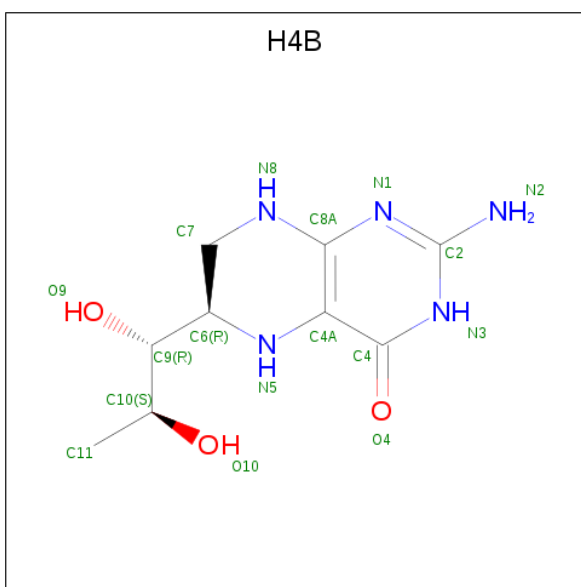
Mol	Chain	Residues	Atoms					ZeroOcc	AltConf	Trace
1	A	407	Total	C	N	O	S	0	0	0
			3313	2121	566	605	21			
1	B	411	Total	C	N	O	S	0	0	0
			3345	2140	574	610	21			

- Molecule 2 is PROTOPORPHYRIN IX CONTAINING FE (three-letter code: HEM) (formula: $C_{34}H_{32}FeN_4O_4$).



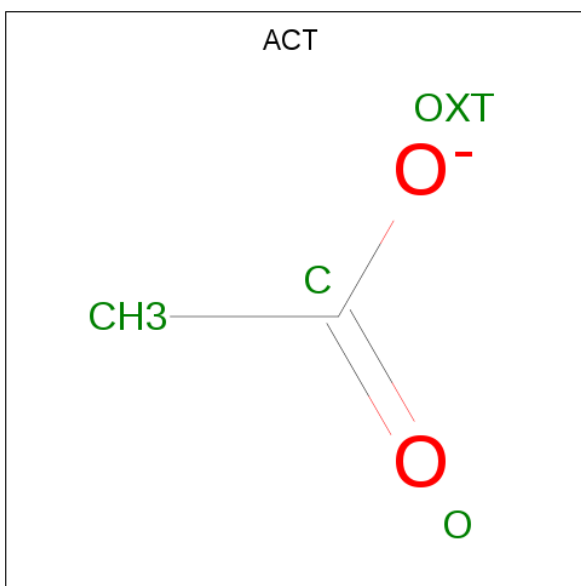
Mol	Chain	Residues	Atoms					ZeroOcc	AltConf
2	A	1	Total	C	Fe	N	O	0	0
			43	34	1	4	4		
2	B	1	Total	C	Fe	N	O	0	0
			43	34	1	4	4		

- Molecule 3 is 5,6,7,8-TETRAHYDROBIOPTERIN (three-letter code: H4B) (formula: $C_9H_{15}N_5O_3$).



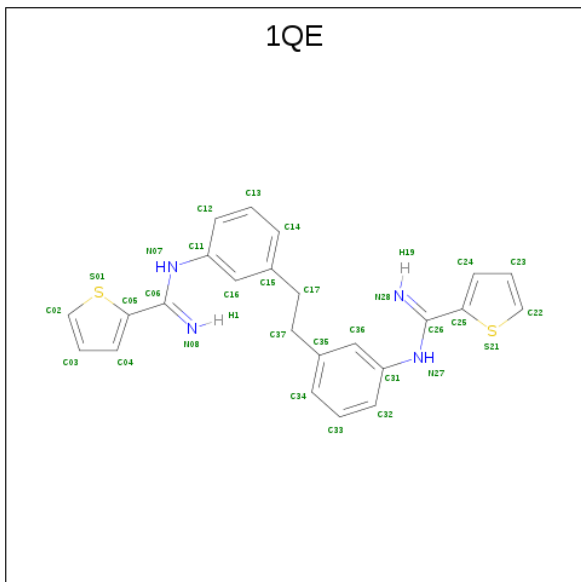
Mol	Chain	Residues	Atoms				ZeroOcc	AltConf
3	A	1	Total 17	C 9	N 5	O 3	0	0
3	B	1	Total 17	C 9	N 5	O 3	0	0

- Molecule 4 is ACETATE ION (three-letter code: ACT) (formula: $\text{C}_2\text{H}_3\text{O}_2$).



Mol	Chain	Residues	Atoms	ZeroOcc	AltConf
4	A	1	Total C O 4 2 2	0	0
4	B	1	Total C O 4 2 2	0	0

- Molecule 5 is N,N'-(ethane-1,2-diyl)dibenzene-3,1-diyl)dithiophene-2-carboximidamide (three-letter code: 1QE) (formula: C₂₄H₂₂N₄S₂).



Mol	Chain	Residues	Atoms				ZeroOcc	AltConf
5	A	1	Total	C	N	S	0	0
			30	24	4	2		
5	B	1	Total	C	N	S	0	0
			30	24	4	2		

- Molecule 6 is ZINC ION (three-letter code: ZN) (formula: Zn).

Mol	Chain	Residues	Atoms		ZeroOcc	AltConf
6	A	1	Total	Zn	0	0
			1	1		

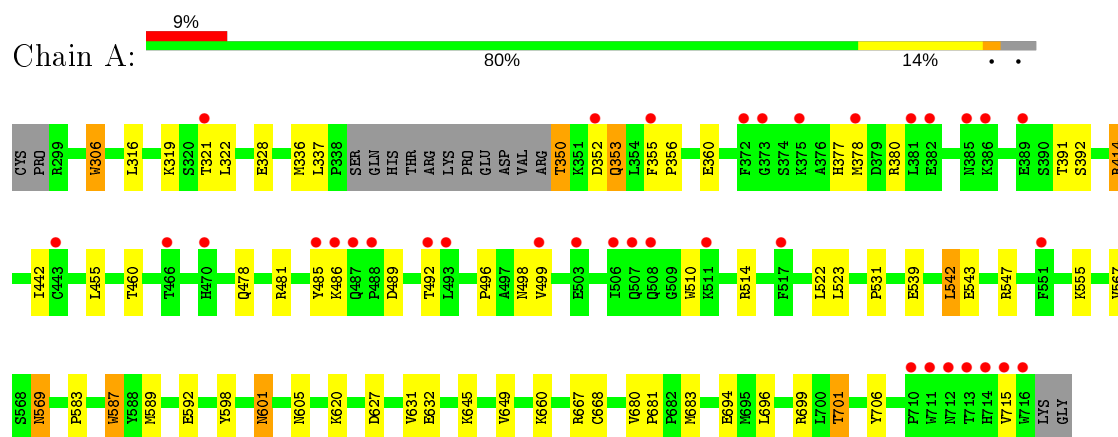
- Molecule 7 is water.

Mol	Chain	Residues	Atoms		ZeroOcc	AltConf
7	A	41	Total	O	0	0
			41	41		
7	B	81	Total	O	0	0
			81	81		

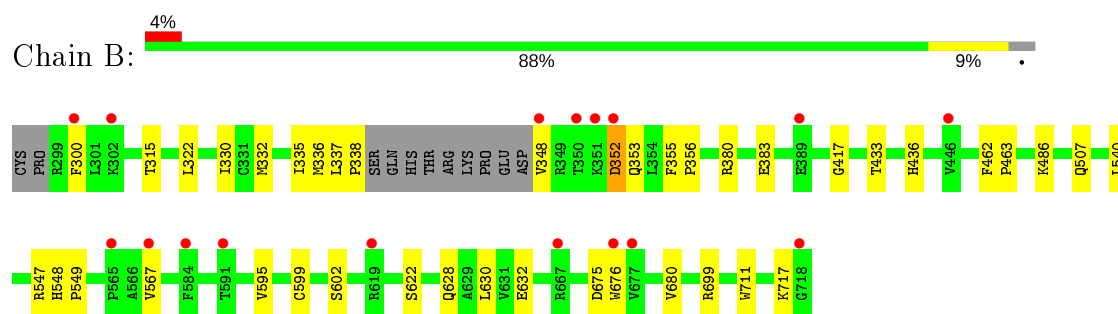
3 Residue-property plots [i](#)

These plots are drawn for all protein, RNA, DNA and oligosaccharide chains in the entry. The first graphic for a chain summarises the proportions of the various outlier classes displayed in the second graphic. The second graphic shows the sequence view annotated by issues in geometry and electron density. Residues are color-coded according to the number of geometric quality criteria for which they contain at least one outlier: green = 0, yellow = 1, orange = 2 and red = 3 or more. A red dot above a residue indicates a poor fit to the electron density ($RSRZ > 2$). Stretches of 2 or more consecutive residues without any outlier are shown as a green connector. Residues present in the sample, but not in the model, are shown in grey.

- Molecule 1: Nitric oxide synthase, brain



- Molecule 1: Nitric oxide synthase, brain



4 Data and refinement statistics

Property	Value	Source
Space group	P 21 21 21	Depositor
Cell constants a, b, c, α , β , γ	51.82Å 111.89Å 164.96Å 90.00° 90.00° 90.00°	Depositor
Resolution (Å)	92.60 – 2.27 46.30 – 2.27	Depositor EDS
% Data completeness (in resolution range)	98.0 (92.60-2.27) 98.1 (46.30-2.27)	Depositor EDS
R_{merge}	0.06	Depositor
R_{sym}	0.06	Depositor
$\langle I/\sigma(I) \rangle$ ¹	2.23 (at 2.27Å)	Xtriage
Refinement program	REFMAC	Depositor
R, R_{free}	0.181 , 0.238 0.186 , 0.241	Depositor DCC
R_{free} test set	2238 reflections (5.04%)	wwPDB-VP
Wilson B-factor (Å ²)	44.2	Xtriage
Anisotropy	0.751	Xtriage
Bulk solvent k_{sol} (e/Å ³), B_{sol} (Å ²)	0.35 , 42.7	EDS
L-test for twinning ²	$\langle L \rangle = 0.49$, $\langle L^2 \rangle = 0.32$	Xtriage
Estimated twinning fraction	No twinning to report.	Xtriage
F_o, F_c correlation	0.96	EDS
Total number of atoms	6969	wwPDB-VP
Average B, all atoms (Å ²)	60.0	wwPDB-VP

Xtriage's analysis on translational NCS is as follows: *The largest off-origin peak in the Patterson function is 4.91% of the height of the origin peak. No significant pseudotranslation is detected.*

¹Intensities estimated from amplitudes.

²Theoretical values of $\langle |L| \rangle$, $\langle L^2 \rangle$ for acentric reflections are 0.5, 0.333 respectively for untwinned datasets, and 0.375, 0.2 for perfectly twinned datasets.

5 Model quality ⓘ

5.1 Standard geometry ⓘ

Bond lengths and bond angles in the following residue types are not validated in this section: 1QE, HEM, ZN, H4B, ACT

The Z score for a bond length (or angle) is the number of standard deviations the observed value is removed from the expected value. A bond length (or angle) with $|Z| > 5$ is considered an outlier worth inspection. RMSZ is the root-mean-square of all Z scores of the bond lengths (or angles).

Mol	Chain	Bond lengths		Bond angles	
		RMSZ	$\# Z > 5$	RMSZ	$\# Z > 5$
1	A	0.84	3/3406 (0.1%)	0.82	1/4621 (0.0%)
1	B	0.89	1/3438 (0.0%)	0.87	1/4661 (0.0%)
All	All	0.87	4/6844 (0.1%)	0.84	2/9282 (0.0%)

All (4) bond length outliers are listed below:

Mol	Chain	Res	Type	Atoms	Z	Observed(Å)	Ideal(Å)
1	A	306	TRP	CD2-CE2	5.53	1.48	1.41
1	A	587	TRP	CD2-CE2	5.14	1.47	1.41
1	B	711	TRP	CD2-CE2	5.13	1.47	1.41
1	A	510	TRP	CD2-CE2	5.00	1.47	1.41

All (2) bond angle outliers are listed below:

Mol	Chain	Res	Type	Atoms	Z	Observed(°)	Ideal(°)
1	B	675	ASP	CB-CG-OD1	5.61	123.34	118.30
1	A	414	ARG	NE-CZ-NH1	5.47	123.03	120.30

There are no chirality outliers.

There are no planarity outliers.

5.2 Too-close contacts ⓘ

In the following table, the Non-H and H(model) columns list the number of non-hydrogen atoms and hydrogen atoms in the chain respectively. The H(added) column lists the number of hydrogen atoms added and optimized by MolProbity. The Clashes column lists the number of clashes within the asymmetric unit, whereas Symm-Clashes lists symmetry related clashes.

Mol	Chain	Non-H	H(model)	H(added)	Clashes	Symm-Clashes
1	A	3313	0	3221	42	1
1	B	3345	0	3259	22	1
2	A	43	0	30	4	0
2	B	43	0	30	4	0
3	A	17	0	15	0	0
3	B	17	0	15	1	0
4	A	4	0	3	0	0
4	B	4	0	3	1	0
5	A	30	0	20	7	0
5	B	30	0	21	5	0
6	A	1	0	0	0	0
7	A	41	0	0	1	0
7	B	81	0	0	3	0
All	All	6969	0	6617	74	1

The all-atom clashscore is defined as the number of clashes found per 1000 atoms (including hydrogen atoms). The all-atom clashscore for this structure is 6.

All (74) close contacts within the same asymmetric unit are listed below, sorted by their clash magnitude.

Atom-1	Atom-2	Interatomic distance (Å)	Clash overlap (Å)
1:A:350:THR:N	1:A:353:GLN:NE2	2.21	0.88
1:A:350:THR:N	1:A:353:GLN:HE22	1.79	0.81
1:A:601:ASN:HB2	7:A:911:HOH:O	1.84	0.77
2:B:801:HEM:HBC2	2:B:801:HEM:HMC2	1.67	0.75
2:A:801:HEM:HMC2	2:A:801:HEM:HBC2	1.72	0.71
1:A:523:LEU:CD2	1:A:531:PRO:HB2	2.22	0.70
1:B:355:PHE:HB2	1:B:356:PRO:HD3	1.77	0.66
1:A:694:GLU:HB3	1:B:335:ILE:HD13	1.81	0.63
2:B:801:HEM:HBB2	2:B:801:HEM:HHC	1.80	0.62
1:A:523:LEU:HD23	1:A:531:PRO:HB2	1.81	0.62
5:A:804:1QE:H16	5:A:804:1QE:C25	2.31	0.61
1:A:567:VAL:HG21	5:A:804:1QE:C14	2.32	0.59
5:B:803:1QE:C25	5:B:803:1QE:H16	2.33	0.59
1:A:455:LEU:HD12	1:A:587:TRP:HB3	1.85	0.58
1:A:306:TRP:CD1	1:B:336:MET:HE2	2.39	0.58
5:B:803:1QE:C32	5:B:803:1QE:C25	2.82	0.56
1:B:332:MET:CE	1:B:338:PRO:HB3	2.36	0.56
1:A:377:HIS:CG	1:A:378:MET:HE1	2.41	0.55
1:B:507:GLN:NE2	7:B:924:HOH:O	2.39	0.55
5:A:804:1QE:C12	5:A:804:1QE:C05	2.86	0.53
1:A:569:ASN:H	1:A:569:ASN:HD22	1.57	0.52

Continued on next page...

Continued from previous page...

Atom-1	Atom-2	Interatomic distance (Å)	Clash overlap (Å)
2:A:801:HEM:HHC	2:A:801:HEM:HBB2	1.91	0.52
1:A:667:ARG:NH1	1:A:668:CYS:SG	2.83	0.51
1:A:631:VAL:HG22	1:A:683:MET:CE	2.41	0.51
1:A:321:THR:HG21	1:A:701:THR:HG22	1.93	0.50
1:A:377:HIS:ND1	1:A:378:MET:HE1	2.26	0.50
1:B:595:VAL:HG22	1:B:630:LEU:HD11	1.93	0.50
1:A:542:LEU:HD12	1:A:543:GLU:N	2.28	0.49
1:A:523:LEU:HD21	1:A:531:PRO:HG2	1.94	0.49
1:A:592:GLU:OE1	5:A:804:1QE:N07	2.36	0.49
1:B:417:GLY:HA2	4:B:804:ACT:CH3	2.44	0.47
5:B:803:1QE:C05	5:B:803:1QE:C12	2.92	0.47
2:B:801:HEM:O1A	3:B:802:H4B:N3	2.45	0.46
1:A:322:LEU:HD13	1:A:699:ARG:NH2	2.30	0.46
1:A:414:ARG:HH11	1:A:706:TYR:HH	1.63	0.46
1:A:567:VAL:HG21	5:A:804:1QE:C13	2.44	0.46
1:B:462:PHE:HB3	1:B:463:PRO:CD	2.45	0.46
1:A:442:ILE:HG21	1:A:522:LEU:HD11	1.98	0.46
1:B:355:PHE:HB2	1:B:356:PRO:CD	2.45	0.45
1:B:380:ARG:NH1	1:B:383:GLU:OE2	2.45	0.45
1:B:622:SER:HB3	7:B:934:HOH:O	2.16	0.45
2:B:801:HEM:CBB	2:B:801:HEM:HHC	2.45	0.45
1:A:696:LEU:HD22	1:B:330:ILE:CD1	2.46	0.45
1:A:377:HIS:ND1	1:A:378:MET:CE	2.79	0.44
1:A:391:THR:O	1:A:392:SER:OG	2.22	0.44
1:A:492:THR:HG21	1:A:496:PRO:HG3	1.99	0.44
1:A:696:LEU:HD22	1:B:330:ILE:HD11	2.00	0.44
1:A:478:GLN:HB2	1:A:481:ARG:HG3	2.00	0.44
1:B:567:VAL:HG21	5:B:803:1QE:C14	2.48	0.44
1:A:631:VAL:HG22	1:A:683:MET:HE3	1.99	0.43
1:B:322:LEU:HD13	1:B:699:ARG:HH21	1.84	0.43
1:A:455:LEU:HD12	1:A:587:TRP:CB	2.48	0.43
1:A:589:MET:HA	1:A:649:VAL:O	2.18	0.43
1:B:548:HIS:CG	1:B:549:PRO:HD2	2.54	0.43
1:B:436:HIS:ND1	7:B:961:HOH:O	2.37	0.43
1:B:548:HIS:NE2	1:B:632:GLU:OE1	2.41	0.43
1:A:598:TYR:O	1:A:605:ASN:N	2.52	0.42
2:A:801:HEM:CMC	2:A:801:HEM:HBC2	2.40	0.42
1:A:706:TYR:OH	2:A:801:HEM:O2D	2.33	0.42
1:B:300:PHE:HD2	1:B:315:THR:CG2	2.33	0.42
5:B:803:1QE:S21	5:B:803:1QE:H16	2.59	0.42
1:A:316:LEU:HD12	1:A:319:LYS:HE2	2.02	0.41

Continued on next page...

Continued from previous page...

Atom-1	Atom-2	Interatomic distance (Å)	Clash overlap (Å)
5:A:804:1QE:C32	5:A:804:1QE:C25	2.98	0.41
1:A:355:PHE:N	1:A:356:PRO:HD2	2.35	0.41
1:A:498:ASN:O	1:A:499:VAL:C	2.57	0.41
1:A:680:VAL:HA	1:A:681:PRO:HD3	1.88	0.41
5:A:804:1QE:H7	5:A:804:1QE:C05	2.50	0.41
1:B:595:VAL:O	1:B:599:CYS:HB2	2.21	0.41
1:A:460:THR:O	1:A:583:PRO:HD2	2.21	0.41
1:A:496:PRO:HA	1:A:499:VAL:HG23	2.02	0.41
1:A:523:LEU:HD21	1:A:531:PRO:CG	2.50	0.41
1:A:601:ASN:HA	1:A:601:ASN:HD22	1.65	0.41
1:B:676:TRP:CZ2	1:B:680:VAL:HG21	2.56	0.40
1:A:632:GLU:OE2	1:B:628:GLN:NE2	2.54	0.40

All (1) symmetry-related close contacts are listed below. The label for Atom-2 includes the symmetry operator and encoded unit-cell translations to be applied.

Atom-1	Atom-2	Interatomic distance (Å)	Clash overlap (Å)
1:A:539:GLU:OE1	1:B:433:THR:OG1[2_554]	2.03	0.17

5.3 Torsion angles [i](#)

5.3.1 Protein backbone [i](#)

In the following table, the Percentiles column shows the percent Ramachandran outliers of the chain as a percentile score with respect to all X-ray entries followed by that with respect to entries of similar resolution.

The Analysed column shows the number of residues for which the backbone conformation was analysed, and the total number of residues.

Mol	Chain	Analysed	Favoured	Allowed	Outliers	Percentiles	
1	A	403/422 (96%)	381 (94%)	20 (5%)	2 (0%)	29	34
1	B	407/422 (96%)	396 (97%)	10 (2%)	1 (0%)	47	57
All	All	810/844 (96%)	777 (96%)	30 (4%)	3 (0%)	34	40

All (3) Ramachandran outliers are listed below:

Mol	Chain	Res	Type
1	A	514	ARG

Continued on next page...

Continued from previous page...

Mol	Chain	Res	Type
1	B	352	ASP
1	A	489	ASP

5.3.2 Protein sidechains ⓘ

In the following table, the Percentiles column shows the percent sidechain outliers of the chain as a percentile score with respect to all X-ray entries followed by that with respect to entries of similar resolution.

The Analysed column shows the number of residues for which the sidechain conformation was analysed, and the total number of residues.

Mol	Chain	Analysed	Rotameric	Outliers	Percentiles	
1	A	363/377 (96%)	342 (94%)	21 (6%)	20	25
1	B	366/377 (97%)	357 (98%)	9 (2%)	47	62
All	All	729/754 (97%)	699 (96%)	30 (4%)	30	41

All (30) residues with a non-rotameric sidechain are listed below:

Mol	Chain	Res	Type
1	A	328	GLU
1	A	336	MET
1	A	337	LEU
1	A	350	THR
1	A	352	ASP
1	A	353	GLN
1	A	360	GLU
1	A	380	ARG
1	A	485	TYR
1	A	486	LYS
1	A	542	LEU
1	A	547	ARG
1	A	555	LYS
1	A	569	ASN
1	A	601	ASN
1	A	620	LYS
1	A	627	ASP
1	A	645	LYS
1	A	660	LYS
1	A	701	THR
1	A	715	VAL

Continued on next page...

Continued from previous page...

Mol	Chain	Res	Type
1	B	337	LEU
1	B	348	VAL
1	B	352	ASP
1	B	353	GLN
1	B	486	LYS
1	B	540	LEU
1	B	547	ARG
1	B	602	SER
1	B	717	LYS

Some sidechains can be flipped to improve hydrogen bonding and reduce clashes. All (13) such sidechains are listed below:

Mol	Chain	Res	Type
1	A	353	GLN
1	A	454	ASN
1	A	507	GLN
1	A	508	GLN
1	A	569	ASN
1	A	601	ASN
1	A	642	GLN
1	A	697	ASN
1	B	364	GLN
1	B	454	ASN
1	B	507	GLN
1	B	601	ASN
1	B	697	ASN

5.3.3 RNA ⓘ

There are no RNA molecules in this entry.

5.4 Non-standard residues in protein, DNA, RNA chains ⓘ

There are no non-standard protein/DNA/RNA residues in this entry.

5.5 Carbohydrates ⓘ

There are no monosaccharides in this entry.

5.6 Ligand geometry

Of 9 ligands modelled in this entry, 1 is monoatomic - leaving 8 for Mogul analysis.

In the following table, the Counts columns list the number of bonds (or angles) for which Mogul statistics could be retrieved, the number of bonds (or angles) that are observed in the model and the number of bonds (or angles) that are defined in the Chemical Component Dictionary. The Link column lists molecule types, if any, to which the group is linked. The Z score for a bond length (or angle) is the number of standard deviations the observed value is removed from the expected value. A bond length (or angle) with $|Z| > 2$ is considered an outlier worth inspection. RMSZ is the root-mean-square of all Z scores of the bond lengths (or angles).

Mol	Type	Chain	Res	Link	Bond lengths			Bond angles		
					Counts	RMSZ	# Z > 2	Counts	RMSZ	# Z > 2
4	ACT	A	803	-	1,3,3	0.49	0	0,3,3	0.00	-
2	HEM	A	801	1	27,50,50	2.10	9 (33%)	17,82,82	3.41	9 (52%)
3	H4B	A	802	-	16,18,18	1.15	2 (12%)	11,26,26	2.79	7 (63%)
5	1QE	B	803	-	33,33,33	1.45	3 (9%)	28,44,44	1.19	2 (7%)
3	H4B	B	802	-	16,18,18	0.99	1 (6%)	11,26,26	2.55	4 (36%)
2	HEM	B	801	1	27,50,50	2.06	8 (29%)	17,82,82	3.59	8 (47%)
5	1QE	A	804	-	33,33,33	1.46	2 (6%)	28,44,44	1.80	3 (10%)
4	ACT	B	804	-	1,3,3	2.49	1 (100%)	0,3,3	0.00	-

In the following table, the Chirals column lists the number of chiral outliers, the number of chiral centers analysed, the number of these observed in the model and the number defined in the Chemical Component Dictionary. Similar counts are reported in the Torsion and Rings columns. '-' means no outliers of that kind were identified.

Mol	Type	Chain	Res	Link	Chirals	Torsions	Rings
2	HEM	A	801	1	-	0/6/54/54	-
3	H4B	A	802	-	-	1/8/17/17	0/2/2/2
5	1QE	B	803	-	-	2/13/21/21	0/4/4/4
3	H4B	B	802	-	-	0/8/17/17	0/2/2/2
2	HEM	B	801	1	-	0/6/54/54	-
5	1QE	A	804	-	-	2/13/21/21	0/4/4/4

All (26) bond length outliers are listed below:

Mol	Chain	Res	Type	Atoms	Z	Observed(Å)	Ideal(Å)
2	B	801	HEM	C3C-C2C	5.16	1.47	1.40
2	A	801	HEM	C3C-C2C	4.86	1.47	1.40
5	A	804	1QE	C25-C26	4.52	1.51	1.45
5	B	803	1QE	C25-C26	4.43	1.51	1.45

Continued on next page...

Continued from previous page...

Mol	Chain	Res	Type	Atoms	Z	Observed(Å)	Ideal(Å)
2	A	801	HEM	C4A-NA	4.25	1.44	1.36
2	B	801	HEM	C1A-NA	3.96	1.44	1.36
5	A	804	1QE	C05-S01	-3.79	1.67	1.72
2	A	801	HEM	C1A-NA	3.71	1.43	1.36
2	B	801	HEM	C4A-NA	3.52	1.43	1.36
2	B	801	HEM	C1B-C2B	3.39	1.50	1.42
2	A	801	HEM	C3D-C2D	3.33	1.47	1.37
2	B	801	HEM	C2A-C3A	3.23	1.47	1.37
2	A	801	HEM	C3B-C2B	3.10	1.44	1.40
2	B	801	HEM	C3D-C2D	2.92	1.46	1.37
3	A	802	H4B	C7-C6	2.91	1.55	1.52
2	B	801	HEM	C3B-C2B	2.87	1.44	1.40
5	B	803	1QE	C06-N07	-2.67	1.33	1.39
2	A	801	HEM	C1B-C2B	2.67	1.48	1.42
2	B	801	HEM	C4D-C3D	2.61	1.48	1.42
4	B	804	ACT	CH3-C	-2.49	1.45	1.48
2	A	801	HEM	C2A-C3A	2.37	1.44	1.37
3	B	802	H4B	C7-C6	2.32	1.54	1.52
5	B	803	1QE	C05-C06	2.27	1.48	1.45
2	A	801	HEM	C4A-CHB	2.06	1.46	1.41
2	A	801	HEM	C1C-C2C	2.05	1.47	1.42
3	A	802	H4B	C2-N2	2.05	1.38	1.33

All (33) bond angle outliers are listed below:

Mol	Chain	Res	Type	Atoms	Z	Observed(°)	Ideal(°)
2	B	801	HEM	C1D-C2D-C3D	-10.20	99.90	107.00
5	A	804	1QE	C03-C02-S01	-7.21	107.13	112.98
2	A	801	HEM	CBA-CAA-C2A	-7.02	99.53	112.49
2	A	801	HEM	C1D-C2D-C3D	-6.45	102.51	107.00
2	A	801	HEM	C3B-C4B-NB	4.98	115.65	109.21
3	A	802	H4B	C4-C4A-C8A	4.77	118.81	114.57
2	B	801	HEM	C3B-C4B-NB	4.77	115.38	109.21
3	B	802	H4B	C4-C4A-N5	4.72	123.08	119.12
2	B	801	HEM	CBA-CAA-C2A	-4.68	103.85	112.49
3	B	802	H4B	C4-C4A-C8A	4.63	118.68	114.57
2	A	801	HEM	CMC-C2C-C3C	4.60	133.29	124.68
2	A	801	HEM	C4C-C3C-C2C	4.58	110.10	106.90
2	B	801	HEM	CMB-C2B-C3B	4.19	132.51	124.68
5	A	804	1QE	C23-C22-S21	-3.90	109.82	112.98
3	A	802	H4B	N3-C2-N1	-3.80	119.47	125.42
2	B	801	HEM	C4C-C3C-C2C	3.74	109.51	106.90

Continued on next page...

Continued from previous page...

Mol	Chain	Res	Type	Atoms	Z	Observed(°)	Ideal(°)
2	A	801	HEM	CAD-CBD-CGD	-3.70	106.47	112.67
2	B	801	HEM	CMC-C2C-C3C	3.65	131.50	124.68
3	A	802	H4B	C2-N1-C8A	3.56	122.52	114.54
2	A	801	HEM	CAA-CBA-CGA	3.36	118.32	112.67
3	A	802	H4B	N2-C2-N3	3.34	122.45	117.25
2	B	801	HEM	C4A-C3A-C2A	-3.13	104.82	107.00
3	B	802	H4B	N2-C2-N3	3.10	122.07	117.25
5	B	803	1QE	C23-C22-S21	-3.07	110.49	112.98
5	B	803	1QE	C03-C02-S01	-3.06	110.50	112.98
3	A	802	H4B	C4-N3-C2	2.82	120.41	115.93
2	B	801	HEM	CMD-C2D-C3D	2.80	130.22	124.94
3	A	802	H4B	C4-C4A-N5	2.55	121.26	119.12
5	A	804	1QE	C32-C31-C36	-2.35	116.86	119.65
3	B	802	H4B	C2-N1-C8A	2.34	119.78	114.54
3	A	802	H4B	C4A-N5-C6	-2.20	115.16	121.16
2	A	801	HEM	CMD-C2D-C3D	2.01	128.72	124.94
2	A	801	HEM	C4A-C3A-C2A	-2.00	105.60	107.00

There are no chirality outliers.

All (5) torsion outliers are listed below:

Mol	Chain	Res	Type	Atoms
3	A	802	H4B	O10-C10-C9-O9
5	A	804	1QE	C34-C35-C37-C17
5	A	804	1QE	C36-C35-C37-C17
5	B	803	1QE	C34-C35-C37-C17
5	B	803	1QE	C36-C35-C37-C17

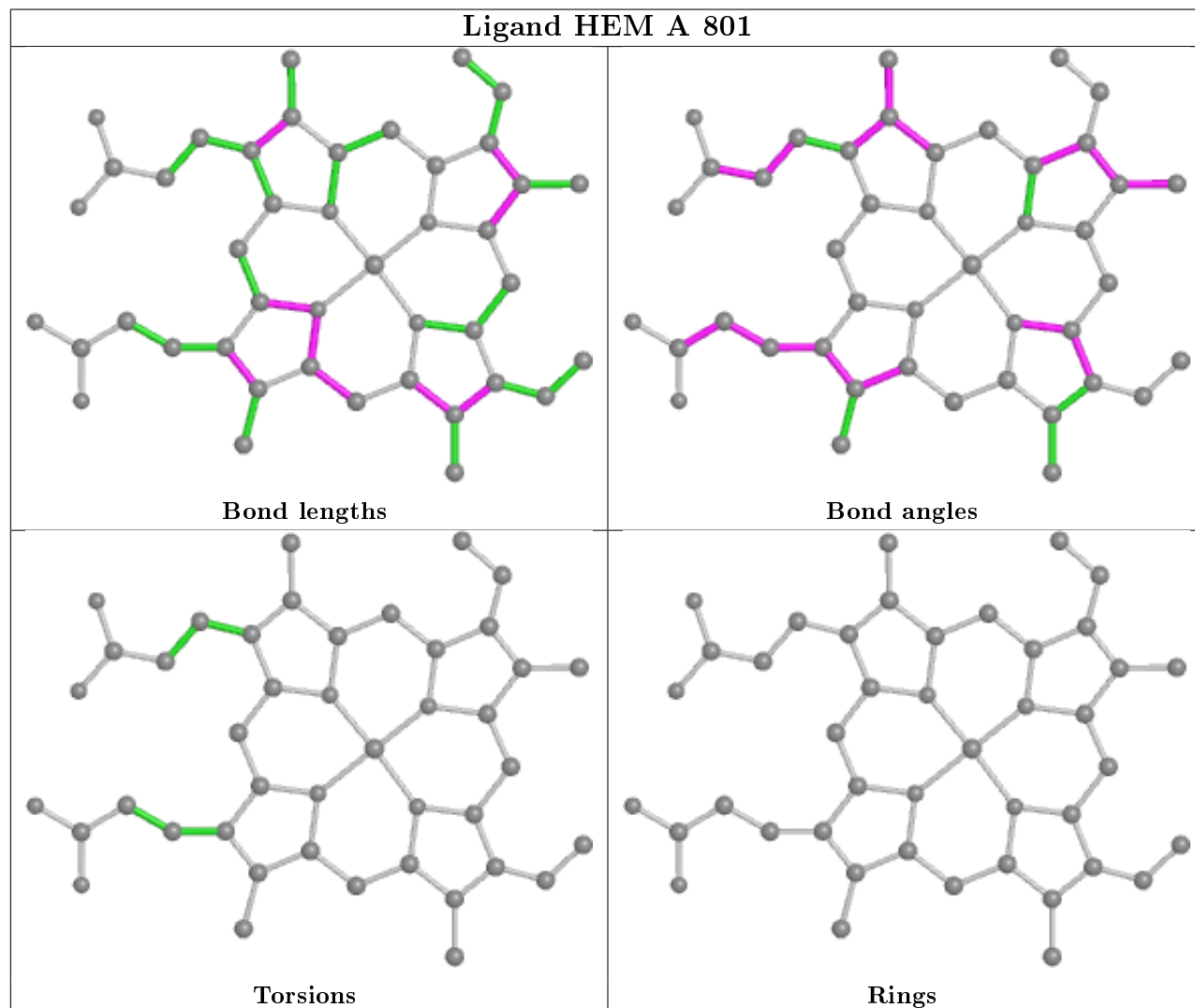
There are no ring outliers.

6 monomers are involved in 21 short contacts:

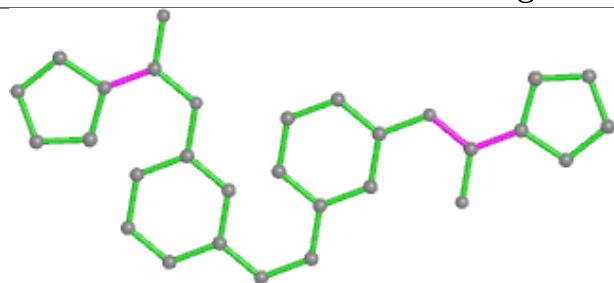
Mol	Chain	Res	Type	Clashes	Symm-Clashes
2	A	801	HEM	4	0
5	B	803	1QE	5	0
3	B	802	H4B	1	0
2	B	801	HEM	4	0
5	A	804	1QE	7	0
4	B	804	ACT	1	0

The following is a two-dimensional graphical depiction of Mogul quality analysis of bond lengths, bond angles, torsion angles, and ring geometry for all instances of the Ligand of Interest. In

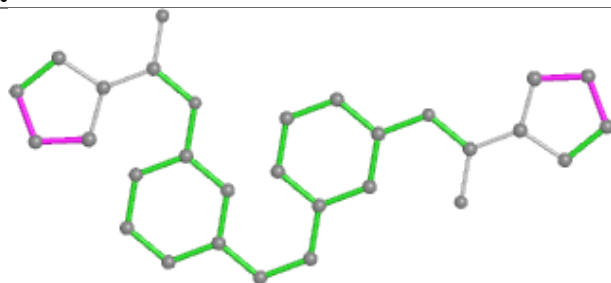
addition, ligands with molecular weight > 250 and outliers as shown on the validation Tables will also be included. For torsion angles, if less than 5% of the Mogul distribution of torsion angles is within 10 degrees of the torsion angle in question, then that torsion angle is considered an outlier. Any bond that is central to one or more torsion angles identified as an outlier by Mogul will be highlighted in the graph. For rings, the root-mean-square deviation (RMSD) between the ring in question and similar rings identified by Mogul is calculated over all ring torsion angles. If the average RMSD is greater than 60 degrees and the minimal RMSD between the ring in question and any Mogul-identified rings is also greater than 60 degrees, then that ring is considered an outlier. The outliers are highlighted in purple. The color gray indicates Mogul did not find sufficient equivalents in the CSD to analyse the geometry.



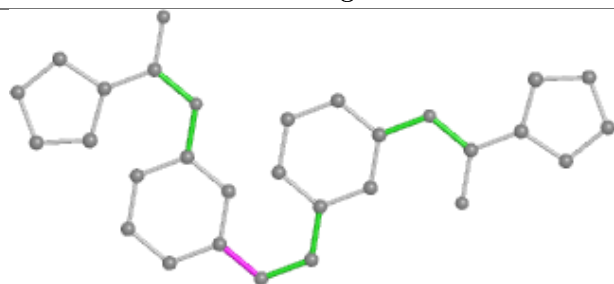
Ligand 1QE B 803



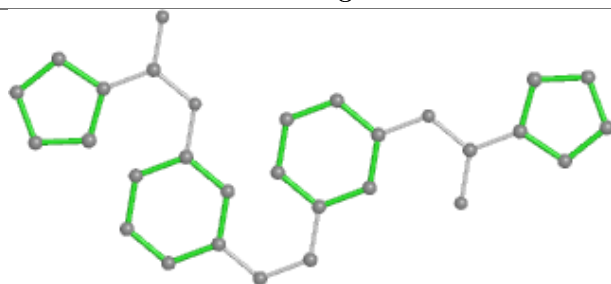
Bond lengths



Bond angles

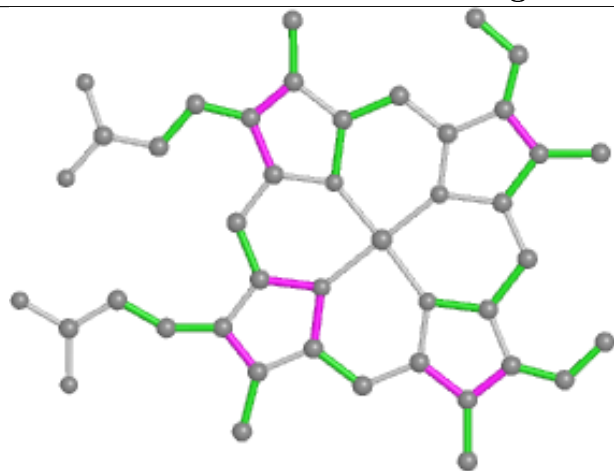


Torsions

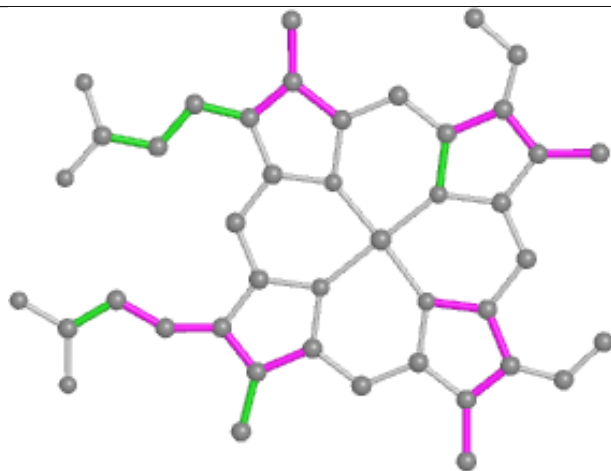


Rings

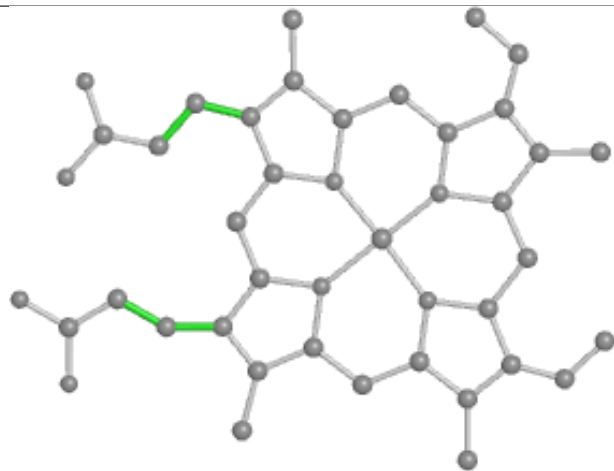
Ligand HEM B 801



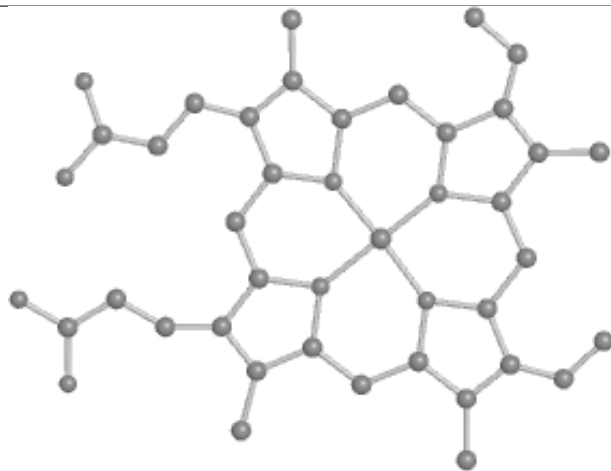
Bond lengths



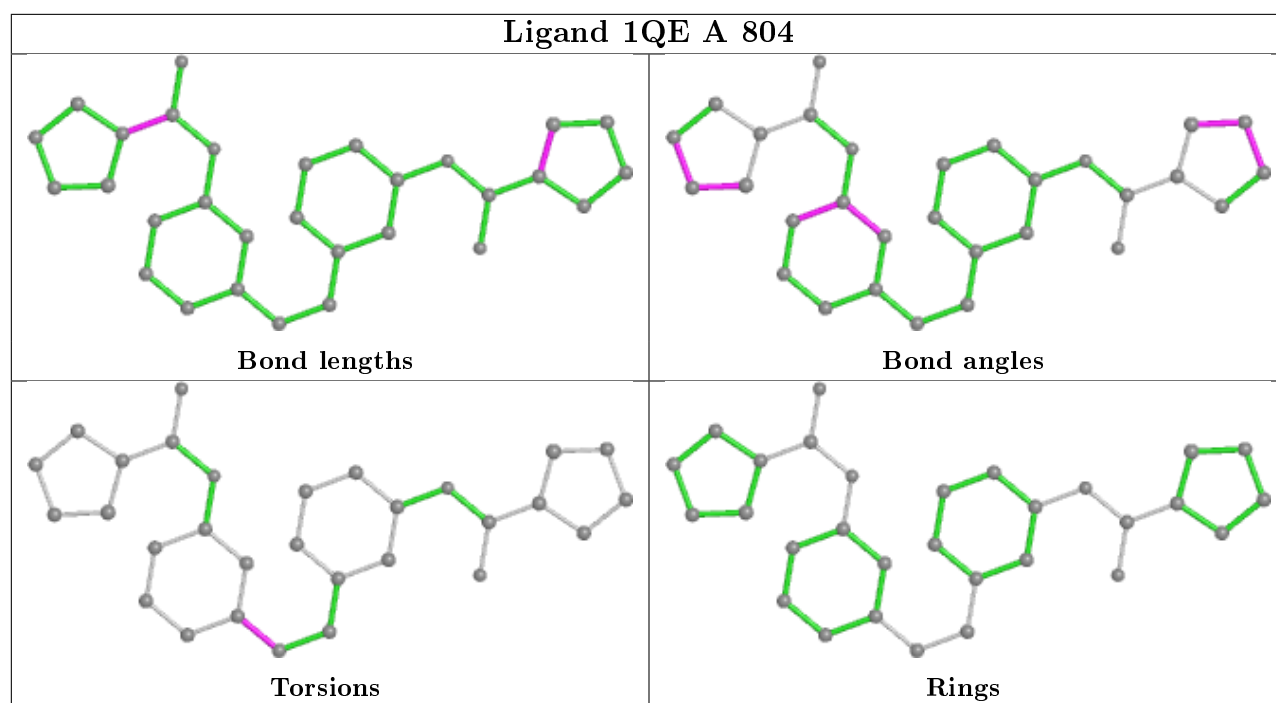
Bond angles



Torsions



Rings



5.7 Other polymers [i](#)

There are no such residues in this entry.

5.8 Polymer linkage issues [i](#)

There are no chain breaks in this entry.

6 Fit of model and data

6.1 Protein, DNA and RNA chains

In the following table, the column labelled ‘#RSRZ> 2’ contains the number (and percentage) of RSRZ outliers, followed by percent RSRZ outliers for the chain as percentile scores relative to all X-ray entries and entries of similar resolution. The OWAB column contains the minimum, median, 95th percentile and maximum values of the occupancy-weighted average B-factor per residue. The column labelled ‘Q< 0.9’ lists the number of (and percentage) of residues with an average occupancy less than 0.9.

Mol	Chain	Analysed	<RSRZ>	#RSRZ>2	OWAB(Å ²)	Q<0.9
1	A	407/422 (96%)	0.53	36 (8%) 10 12	32, 64, 114, 143	0
1	B	411/422 (97%)	0.22	17 (4%) 37 42	32, 51, 80, 108	0
All	All	818/844 (96%)	0.37	53 (6%) 18 23	32, 55, 104, 143	0

All (53) RSRZ outliers are listed below:

Mol	Chain	Res	Type	RSRZ
1	A	715	VAL	6.6
1	A	488	PRO	6.3
1	A	355	PHE	5.5
1	A	716	TRP	5.5
1	B	300	PHE	5.3
1	A	493	LEU	4.7
1	A	486	LYS	4.6
1	A	714	HIS	4.3
1	B	718	GLY	4.3
1	A	352	ASP	4.0
1	A	511	LYS	3.9
1	A	506	ILE	3.8
1	A	713	THR	3.7
1	A	389	GLU	3.6
1	B	667	ARG	3.6
1	B	350	THR	3.5
1	B	389	GLU	3.5
1	B	619	ARG	3.5
1	A	711	TRP	3.0
1	B	302	LYS	2.9
1	A	372	PHE	2.9
1	A	386	LYS	2.8
1	A	373	GLY	2.8
1	A	499	VAL	2.7

Continued on next page...

Continued from previous page...

Mol	Chain	Res	Type	RSRZ
1	A	487	GLN	2.7
1	A	507	GLN	2.7
1	A	375	LYS	2.7
1	A	382	GLU	2.6
1	A	485	TYR	2.6
1	A	492	THR	2.5
1	A	381	LEU	2.5
1	B	348	VAL	2.5
1	A	710	PRO	2.5
1	A	470	HIS	2.5
1	B	352	ASP	2.4
1	A	517	PHE	2.4
1	B	584	PHE	2.4
1	A	503	GLU	2.3
1	B	351	LYS	2.3
1	B	567	VAL	2.3
1	B	591	THR	2.3
1	A	378	MET	2.3
1	B	565	PRO	2.3
1	A	321	THR	2.2
1	A	508	GLN	2.2
1	B	677	VAL	2.2
1	A	385	ASN	2.1
1	A	712	ASN	2.1
1	A	466	THR	2.1
1	A	551	PHE	2.1
1	B	446	VAL	2.1
1	B	676	TRP	2.0
1	A	443	CYS	2.0

6.2 Non-standard residues in protein, DNA, RNA chains ⓘ

There are no non-standard protein/DNA/RNA residues in this entry.

6.3 Carbohydrates ⓘ

There are no monosaccharides in this entry.

6.4 Ligands ⓘ

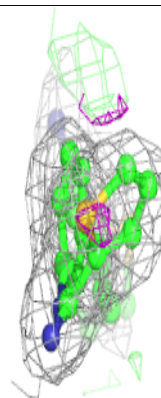
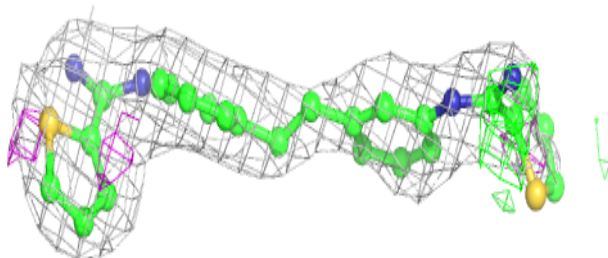
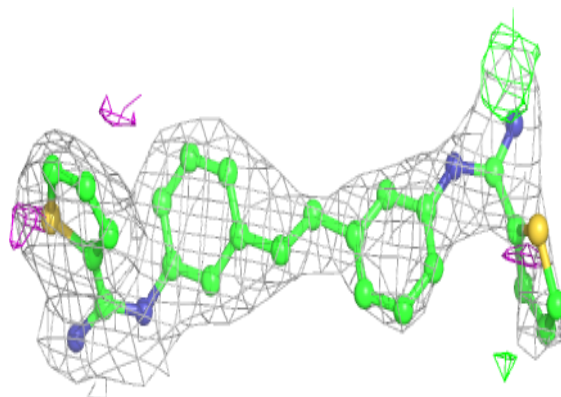
In the following table, the Atoms column lists the number of modelled atoms in the group and the number defined in the chemical component dictionary. The B-factors column lists the minimum, median, 95th percentile and maximum values of B factors of atoms in the group. The column labelled 'Q< 0.9' lists the number of atoms with occupancy less than 0.9.

Mol	Type	Chain	Res	Atoms	RSCC	RSR	B-factors(Å ²)	Q<0.9
5	1QE	A	804	30/30	0.91	0.20	30,52,115,128	0
5	1QE	B	803	30/30	0.93	0.23	34,54,151,162	0
4	ACT	B	804	4/4	0.93	0.24	49,54,59,63	0
3	H4B	B	802	17/17	0.96	0.17	40,44,50,55	0
2	HEM	A	801	43/43	0.98	0.19	32,37,48,53	0
2	HEM	B	801	43/43	0.98	0.20	33,36,47,53	0
6	ZN	A	805	1/1	0.98	0.07	51,51,51,51	0
3	H4B	A	802	17/17	0.98	0.14	40,44,50,50	0
4	ACT	A	803	4/4	0.98	0.22	51,54,60,61	0

The following is a graphical depiction of the model fit to experimental electron density of all instances of the Ligand of Interest. In addition, ligands with molecular weight > 250 and outliers as shown on the geometry validation Tables will also be included. Each fit is shown from different orientation to approximate a three-dimensional view.

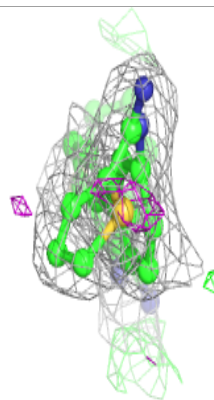
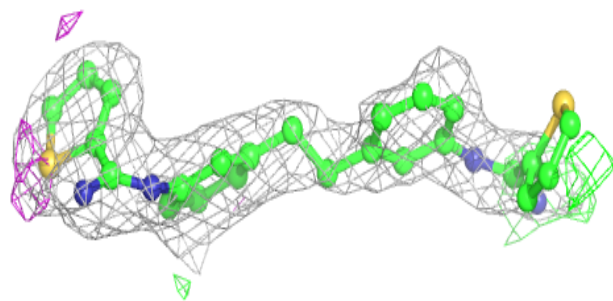
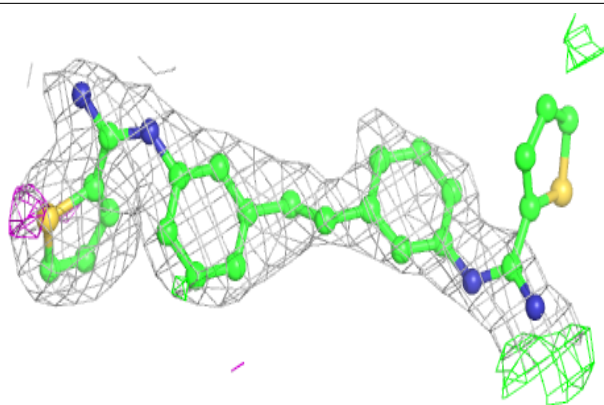
Electron density around 1QE A 804:

2mF_o-DF_c (at 0.7 rmsd) in gray
mF_o-DF_c (at 3 rmsd) in purple (negative)
and green (positive)



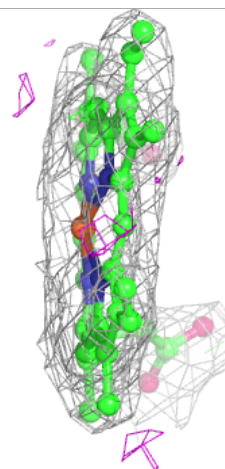
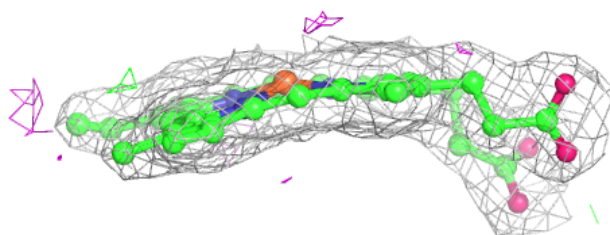
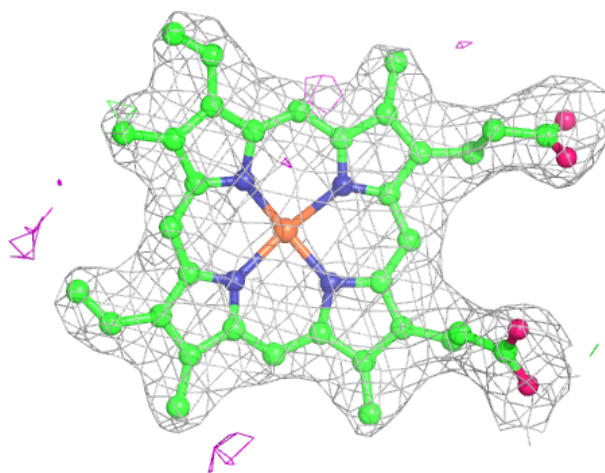
Electron density around 1QE B 803:

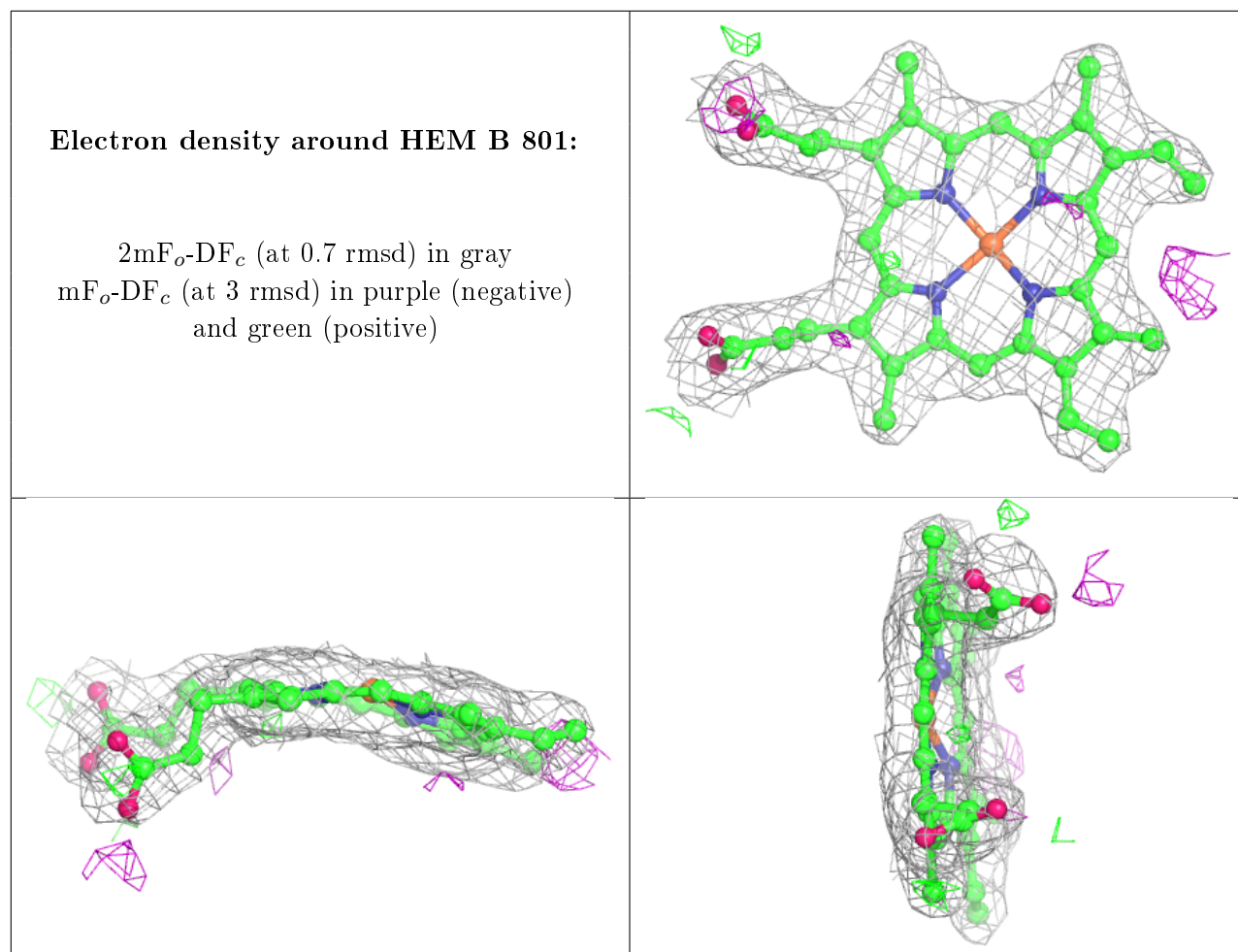
$2mF_o-DF_c$ (at 0.7 rmsd) in gray
 mF_o-DF_c (at 3 rmsd) in purple (negative)
and green (positive)



Electron density around HEM A 801:

$2mF_o-DF_c$ (at 0.7 rmsd) in gray
 mF_o-DF_c (at 3 rmsd) in purple (negative)
and green (positive)





6.5 Other polymers [i](#)

There are no such residues in this entry.