



Full wwPDB X-ray Structure Validation Report ⓘ

Aug 25, 2020 – 05:19 PM BST

PDB ID : 6KC6
Title : HOIP-HOIPIN8 complex
Authors : Sato, Y.; Fukai, S.
Deposited on : 2019-06-27
Resolution : 2.12 Å(reported)

This is a Full wwPDB X-ray Structure Validation Report for a publicly released PDB entry.

We welcome your comments at validation@mail.wwpdb.org

A user guide is available at

<https://www.wwpdb.org/validation/2017/XrayValidationReportHelp>

with specific help available everywhere you see the ⓘ symbol.

The following versions of software and data (see [references ⓘ](#)) were used in the production of this report:

MolProbity : 4.02b-467
Mogul : 1.8.5 (274361), CSD as541be (2020)
Xtriage (Phenix) : 1.13
EDS : 2.13
buster-report : 1.1.7 (2018)
Percentile statistics : 20191225.v01 (using entries in the PDB archive December 25th 2019)
Refmac : 5.8.0158
CCP4 : 7.0.044 (Gargrove)
Ideal geometry (proteins) : Engh & Huber (2001)
Ideal geometry (DNA, RNA) : Parkinson et al. (1996)
Validation Pipeline (wwPDB-VP) : 2.13

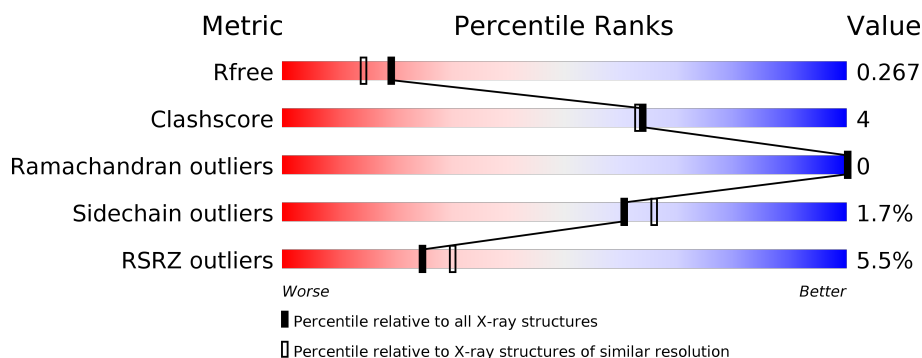
1 Overall quality at a glance

The following experimental techniques were used to determine the structure:

X-RAY DIFFRACTION

The reported resolution of this entry is 2.12 Å.

Percentile scores (ranging between 0-100) for global validation metrics of the entry are shown in the following graphic. The table shows the number of entries on which the scores are based.



Metric	Whole archive (#Entries)	Similar resolution (#Entries, resolution range(Å))
R_{free}	130704	6241 (2.14-2.10)
Clashscore	141614	6778 (2.14-2.10)
Ramachandran outliers	138981	6705 (2.14-2.10)
Sidechain outliers	138945	6706 (2.14-2.10)
RSRZ outliers	127900	6112 (2.14-2.10)

The table below summarises the geometric issues observed across the polymeric chains and their fit to the electron density. The red, orange, yellow and green segments on the lower bar indicate the fraction of residues that contain outliers for ≥ 3 , 2, 1 and 0 types of geometric quality criteria respectively. A grey segment represents the fraction of residues that are not modelled. The numeric value for each fraction is indicated below the corresponding segment, with a dot representing fractions $\leq 5\%$. The upper red bar (where present) indicates the fraction of residues that have poor fit to the electron density. The numeric value is given above the bar.

Mol	Chain	Length	Quality of chain
1	A	225	<div> <div>4%</div> <div> <div></div> <div>79%</div> <div>9%</div> <div>12%</div> </div> </div>
1	C	225	<div> <div>2%</div> <div> <div></div> <div>78%</div> <div>10%</div> <div>12%</div> </div> </div>
1	E	225	<div> <div>6%</div> <div> <div></div> <div>75%</div> <div>12%</div> <div>12%</div> </div> </div>
1	G	225	<div> <div>4%</div> <div> <div></div> <div>76%</div> <div>11%</div> <div>12%</div> </div> </div>
1	I	225	<div> <div>8%</div> <div> <div></div> <div>77%</div> <div>9%</div> <div>12%</div> </div> </div>
1	K	225	<div> <div>5%</div> <div> <div></div> <div>79%</div> <div>8%</div> <div>12%</div> </div> </div>

2 Entry composition [i](#)

There are 6 unique types of molecules in this entry. The entry contains 9939 atoms, of which 0 are hydrogens and 0 are deuteriums.

In the tables below, the ZeroOcc column contains the number of atoms modelled with zero occupancy, the AltConf column contains the number of residues with at least one atom in alternate conformation and the Trace column contains the number of residues modelled with at most 2 atoms.

- Molecule 1 is a protein called E3 ubiquitin-protein ligase RNF31.

Mol	Chain	Residues	Atoms					ZeroOcc	AltConf	Trace
1	A	197	Total	C	N	O	S	0	0	0
			1563	979	285	284	15			
1	C	198	Total	C	N	O	S	0	0	0
			1568	982	286	285	15			
1	E	198	Total	C	N	O	S	0	0	0
			1568	982	286	285	15			
1	G	197	Total	C	N	O	S	0	0	0
			1560	978	284	283	15			
1	I	197	Total	C	N	O	S	0	0	0
			1563	979	285	284	15			
1	K	197	Total	C	N	O	S	0	0	0
			1563	979	285	284	15			

There are 30 discrepancies between the modelled and reference sequences:

Chain	Residue	Modelled	Actual	Comment	Reference
A	848	GLY	-	expression tag	UNP Q96EP0
A	849	PRO	-	expression tag	UNP Q96EP0
A	850	GLY	-	expression tag	UNP Q96EP0
A	851	HIS	-	expression tag	UNP Q96EP0
A	852	MET	-	expression tag	UNP Q96EP0
C	848	GLY	-	expression tag	UNP Q96EP0
C	849	PRO	-	expression tag	UNP Q96EP0
C	850	GLY	-	expression tag	UNP Q96EP0
C	851	HIS	-	expression tag	UNP Q96EP0
C	852	MET	-	expression tag	UNP Q96EP0
E	848	GLY	-	expression tag	UNP Q96EP0
E	849	PRO	-	expression tag	UNP Q96EP0
E	850	GLY	-	expression tag	UNP Q96EP0
E	851	HIS	-	expression tag	UNP Q96EP0
E	852	MET	-	expression tag	UNP Q96EP0
G	848	GLY	-	expression tag	UNP Q96EP0
G	849	PRO	-	expression tag	UNP Q96EP0

Continued on next page...

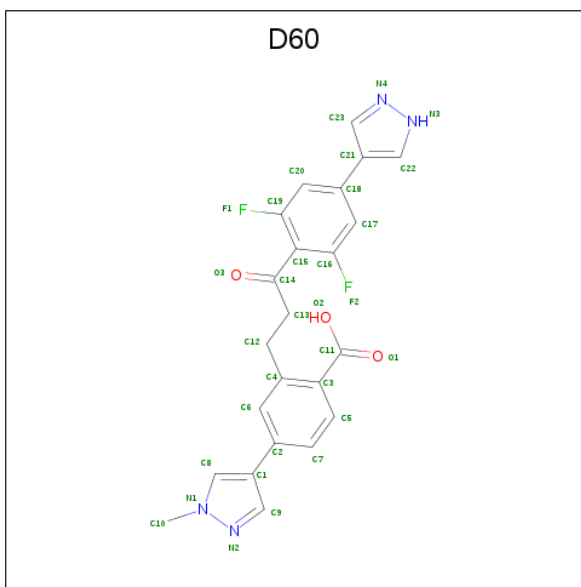
Continued from previous page...

Chain	Residue	Modelled	Actual	Comment	Reference
G	850	GLY	-	expression tag	UNP Q96EP0
G	851	HIS	-	expression tag	UNP Q96EP0
G	852	MET	-	expression tag	UNP Q96EP0
I	848	GLY	-	expression tag	UNP Q96EP0
I	849	PRO	-	expression tag	UNP Q96EP0
I	850	GLY	-	expression tag	UNP Q96EP0
I	851	HIS	-	expression tag	UNP Q96EP0
I	852	MET	-	expression tag	UNP Q96EP0
K	848	GLY	-	expression tag	UNP Q96EP0
K	849	PRO	-	expression tag	UNP Q96EP0
K	850	GLY	-	expression tag	UNP Q96EP0
K	851	HIS	-	expression tag	UNP Q96EP0
K	852	MET	-	expression tag	UNP Q96EP0

- Molecule 2 is ZINC ION (three-letter code: ZN) (formula: Zn).

Mol	Chain	Residues	Atoms	ZeroOcc	AltConf
2	G	4	Total Zn 4 4	0	0
2	K	4	Total Zn 4 4	0	0
2	E	4	Total Zn 4 4	0	0
2	I	4	Total Zn 4 4	0	0
2	C	4	Total Zn 4 4	0	0
2	A	4	Total Zn 4 4	0	0

- Molecule 3 is 2-[3-[2,6-bis(fluoranyl)-4-(1 {H}-pyrazol-4-yl)phenyl]-3-oxidanylidene-propyl]-4-(1-methylpyrazol-4-yl)benzoic acid (three-letter code: D60) (formula: C₂₃H₁₈F₂N₄O₃) (labeled as "Ligand of Interest" by author).

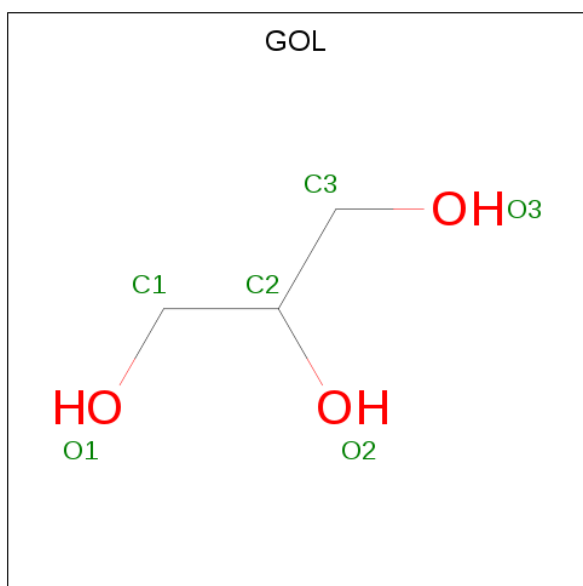


Mol	Chain	Residues	Atoms					ZeroOcc	AltConf
3	A	1	Total	C	F	N	O	0	0
			32	23	2	4	3		
3	C	1	Total	C	F	N	O	0	0
			32	23	2	4	3		
3	E	1	Total	C	F	N	O	0	0
			32	23	2	4	3		
3	G	1	Total	C	F	N	O	0	0
			32	23	2	4	3		
3	I	1	Total	C	F	N	O	0	0
			32	23	2	4	3		
3	K	1	Total	C	F	N	O	0	0
			32	23	2	4	3		

- Molecule 4 is CHLORIDE ION (three-letter code: CL) (formula: Cl).

Mol	Chain	Residues	Atoms		ZeroOcc	AltConf
4	G	1	Total	Cl	0	0
			1	1		
4	K	1	Total	Cl	0	0
			1	1		
4	E	1	Total	Cl	0	0
			1	1		
4	I	2	Total	Cl	0	0
			2	2		
4	C	1	Total	Cl	0	0
			1	1		
4	A	3	Total	Cl	0	0
			3	3		

- Molecule 5 is GLYCEROL (three-letter code: GOL) (formula: $C_3H_8O_3$).



Mol	Chain	Residues	Atoms			ZeroOcc	AltConf
5	A	1	Total	C	O	0	0
			6	3	3		
5	A	1	Total	C	O	0	0
			6	3	3		
5	C	1	Total	C	O	0	0
			6	3	3		
5	C	1	Total	C	O	0	0
			6	3	3		
5	C	1	Total	C	O	0	0
			6	3	3		
5	E	1	Total	C	O	0	0
			6	3	3		
5	E	1	Total	C	O	0	0
			6	3	3		
5	G	1	Total	C	O	0	0
			6	3	3		
5	K	1	Total	C	O	0	0
			6	3	3		
5	K	1	Total	C	O	0	0
			6	3	3		

- Molecule 6 is water.

Mol	Chain	Residues	Atoms		ZeroOcc	AltConf
6	A	65	Total	O	0	0
			65	65		

Continued on next page...

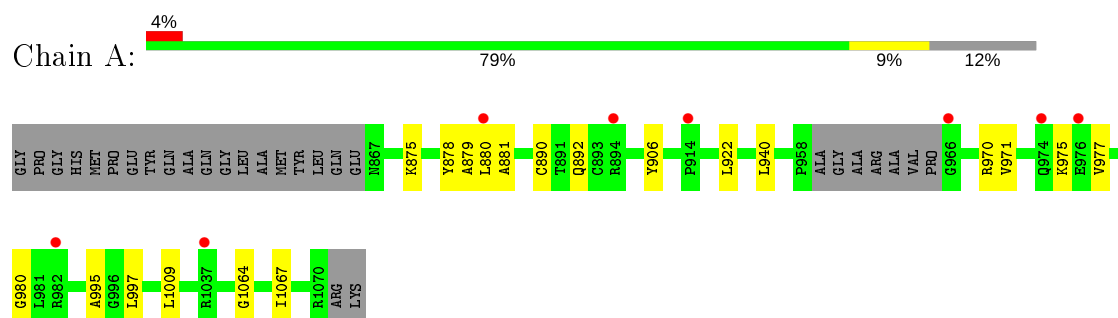
Continued from previous page...

Mol	Chain	Residues	Atoms		ZeroOcc	AltConf
6	C	56	Total 56	O 56	0	0
6	E	33	Total 33	O 33	0	0
6	G	40	Total 40	O 40	0	0
6	I	35	Total 35	O 35	0	0
6	K	40	Total 40	O 40	0	0

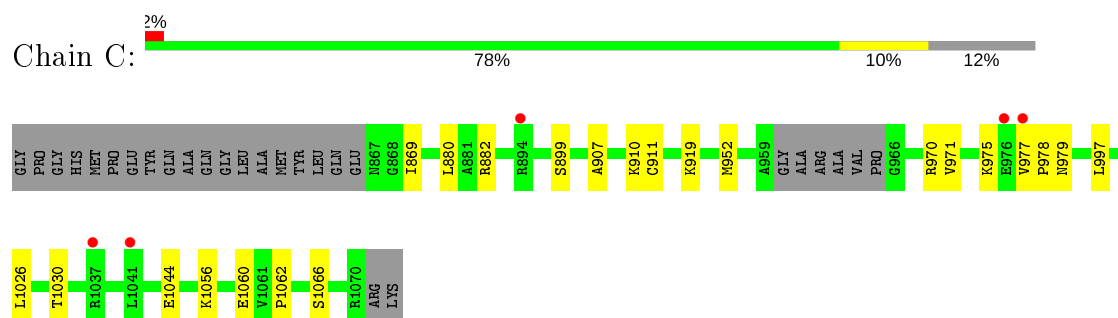
3 Residue-property plots [i](#)

These plots are drawn for all protein, RNA, DNA and oligosaccharide chains in the entry. The first graphic for a chain summarises the proportions of the various outlier classes displayed in the second graphic. The second graphic shows the sequence view annotated by issues in geometry and electron density. Residues are color-coded according to the number of geometric quality criteria for which they contain at least one outlier: green = 0, yellow = 1, orange = 2 and red = 3 or more. A red dot above a residue indicates a poor fit to the electron density ($RSRZ > 2$). Stretches of 2 or more consecutive residues without any outlier are shown as a green connector. Residues present in the sample, but not in the model, are shown in grey.

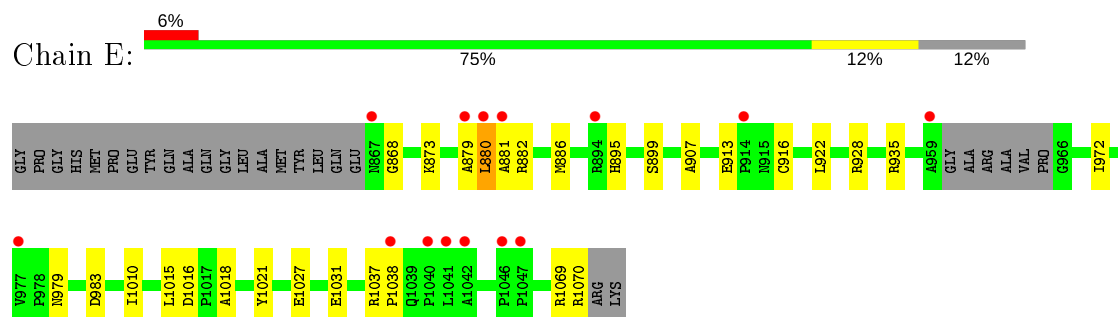
- Molecule 1: E3 ubiquitin-protein ligase RNF31



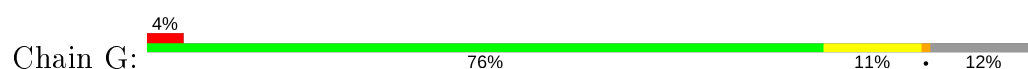
- Molecule 1: E3 ubiquitin-protein ligase RNF31

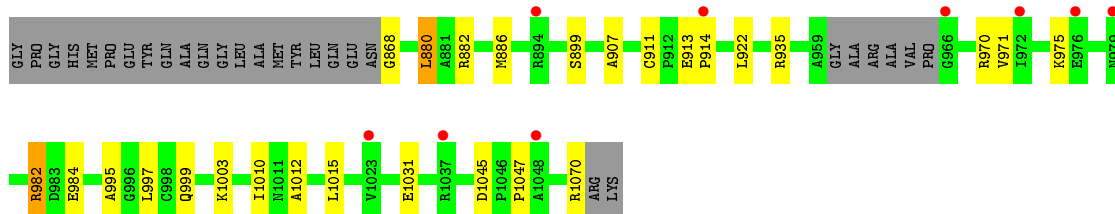


- Molecule 1: E3 ubiquitin-protein ligase RNF31

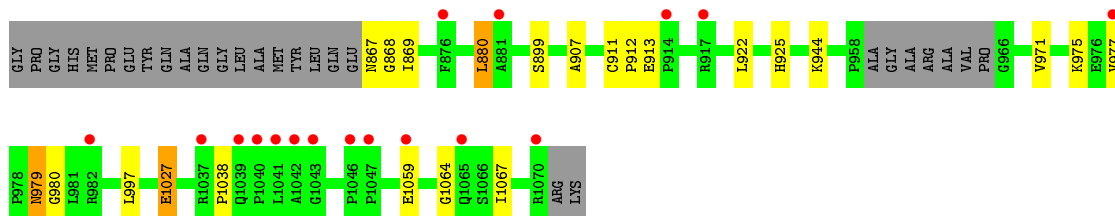
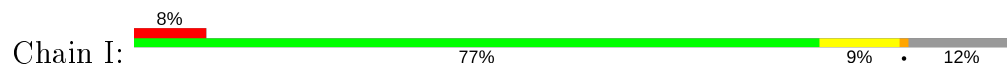


- Molecule 1: E3 ubiquitin-protein ligase RNF31

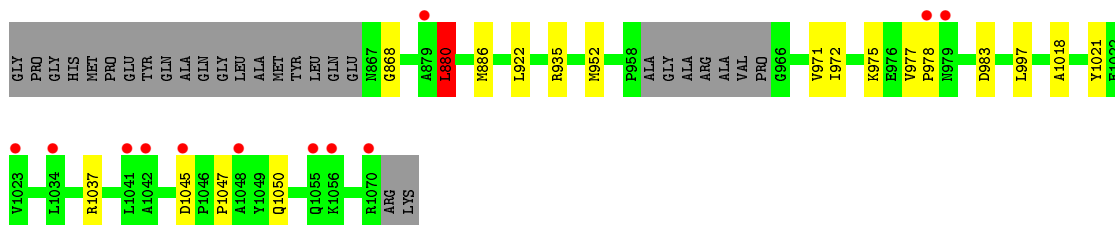
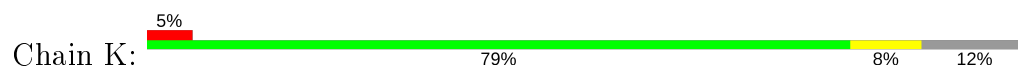




- Molecule 1: E3 ubiquitin-protein ligase RNF31



- Molecule 1: E3 ubiquitin-protein ligase RNF31



4 Data and refinement statistics

Property	Value	Source
Space group	C 1 2 1	Depositor
Cell constants a, b, c, α , β , γ	151.59Å 88.79Å 104.44Å 90.00° 101.08° 90.00°	Depositor
Resolution (Å)	46.59 – 2.12 46.59 – 2.12	Depositor EDS
% Data completeness (in resolution range)	99.2 (46.59-2.12) 99.3 (46.59-2.12)	Depositor EDS
R_{merge}	0.12	Depositor
R_{sym}	(Not available)	Depositor
$\langle I/\sigma(I) \rangle$ ¹	1.09 (at 2.12Å)	Xtriage
Refinement program	PHENIX 1.9_1692	Depositor
R, R_{free}	0.211 , 0.267 0.213 , 0.267	Depositor DCC
R_{free} test set	3817 reflections (5.00%)	wwPDB-VP
Wilson B-factor (Å ²)	48.4	Xtriage
Anisotropy	0.273	Xtriage
Bulk solvent k_{sol} (e/Å ³), B_{sol} (Å ²)	0.36 , 49.5	EDS
L-test for twinning ²	$\langle L \rangle = 0.49$, $\langle L^2 \rangle = 0.32$	Xtriage
Estimated twinning fraction	No twinning to report.	Xtriage
F_o, F_c correlation	0.96	EDS
Total number of atoms	9939	wwPDB-VP
Average B, all atoms (Å ²)	59.0	wwPDB-VP

Xtriage's analysis on translational NCS is as follows: *The analyses of the Patterson function reveals a significant off-origin peak that is 46.90 % of the origin peak, indicating pseudo-translational symmetry. The chance of finding a peak of this or larger height randomly in a structure without pseudo-translational symmetry is equal to 1.0715e-04. The detected translational NCS is most likely also responsible for the elevated intensity ratio.*

¹ Intensities estimated from amplitudes.

² Theoretical values of $\langle |L| \rangle$, $\langle L^2 \rangle$ for acentric reflections are 0.5, 0.333 respectively for untwinned datasets, and 0.375, 0.2 for perfectly twinned datasets.

5 Model quality [i](#)

5.1 Standard geometry [i](#)

Bond lengths and bond angles in the following residue types are not validated in this section: GOL, ZN, D60, CL

The Z score for a bond length (or angle) is the number of standard deviations the observed value is removed from the expected value. A bond length (or angle) with $|Z| > 5$ is considered an outlier worth inspection. RMSZ is the root-mean-square of all Z scores of the bond lengths (or angles).

Mol	Chain	Bond lengths		Bond angles	
		RMSZ	# Z >5	RMSZ	# Z >5
1	A	0.44	0/1603	0.53	0/2169
1	C	0.46	0/1608	0.56	0/2176
1	E	0.44	0/1608	0.56	1/2176 (0.0%)
1	G	0.43	0/1600	0.52	1/2165 (0.0%)
1	I	0.39	0/1603	0.53	0/2169
1	K	0.41	0/1603	0.54	1/2169 (0.0%)
All	All	0.43	0/9625	0.54	3/13024 (0.0%)

There are no bond length outliers.

All (3) bond angle outliers are listed below:

Mol	Chain	Res	Type	Atoms	Z	Observed(°)	Ideal(°)
1	G	880	LEU	CA-CB-CG	5.82	128.69	115.30
1	E	880	LEU	CA-CB-CG	5.76	128.54	115.30
1	K	880	LEU	CA-CB-CG	5.14	127.11	115.30

There are no chirality outliers.

There are no planarity outliers.

5.2 Too-close contacts [i](#)

In the following table, the Non-H and H(model) columns list the number of non-hydrogen atoms and hydrogen atoms in the chain respectively. The H(added) column lists the number of hydrogen atoms added and optimized by MolProbity. The Clashes column lists the number of clashes within the asymmetric unit, whereas Symm-Clashes lists symmetry related clashes.

Mol	Chain	Non-H	H(model)	H(added)	Clashes	Symm-Clashes
1	A	1563	0	1504	12	0
1	C	1568	0	1509	13	0

Continued on next page...

Continued from previous page...

Mol	Chain	Non-H	H(model)	H(added)	Clashes	Symm-Clashes
1	E	1568	0	1509	16	0
1	G	1560	0	1503	16	0
1	I	1563	0	1504	15	0
1	K	1563	0	1504	8	0
2	A	4	0	0	0	0
2	C	4	0	0	0	0
2	E	4	0	0	0	0
2	G	4	0	0	0	0
2	I	4	0	0	0	0
2	K	4	0	0	0	0
3	A	32	0	0	0	0
3	C	32	0	0	0	0
3	E	32	0	0	0	0
3	G	32	0	0	0	0
3	I	32	0	0	0	0
3	K	32	0	0	0	0
4	A	3	0	0	0	0
4	C	1	0	0	0	0
4	E	1	0	0	0	0
4	G	1	0	0	0	0
4	I	2	0	0	0	0
4	K	1	0	0	0	0
5	A	12	0	16	1	0
5	C	18	0	24	1	0
5	E	12	0	16	0	0
5	G	6	0	8	1	0
5	K	12	0	16	0	0
6	A	65	0	0	1	0
6	C	56	0	0	1	0
6	E	33	0	0	0	0
6	G	40	0	0	1	0
6	I	35	0	0	2	0
6	K	40	0	0	0	0
All	All	9939	0	9113	79	0

The all-atom clashscore is defined as the number of clashes found per 1000 atoms (including hydrogen atoms). The all-atom clashscore for this structure is 4.

All (79) close contacts within the same asymmetric unit are listed below, sorted by their clash magnitude.

Atom-1	Atom-2	Interatomic distance (Å)	Clash overlap (Å)
1:I:868:GLY:H	1:I:880:LEU:HD22	1.56	0.70
1:A:940:LEU:O	6:A:1201:HOH:O	2.12	0.67
1:A:970:ARG:NH1	1:A:995:ALA:O	2.20	0.67
1:E:873:LYS:HD3	1:E:895:HIS:HB2	1.76	0.67
1:C:1026:LEU:O	1:C:1030:THR:HG23	1.96	0.66
1:G:907:ALA:HA	1:G:922:LEU:HD13	1.78	0.66
1:C:1044:GLU:OE2	6:C:1201:HOH:O	2.14	0.65
1:K:868:GLY:HA2	1:K:880:LEU:HB3	1.80	0.64
1:K:971:VAL:HG23	1:K:997:LEU:HD22	1.83	0.60
1:G:1012:ALA:HB1	1:G:1070:ARG:HG3	1.83	0.60
1:G:982:ARG:NH1	6:G:1201:HOH:O	2.34	0.60
1:G:1010:ILE:HG23	1:G:1015:LEU:HB2	1.84	0.60
1:G:970:ARG:NH2	1:G:995:ALA:O	2.37	0.57
1:I:907:ALA:HA	1:I:922:LEU:HD13	1.87	0.57
1:E:1010:ILE:HG23	1:E:1015:LEU:HB2	1.86	0.57
1:G:886:MET:HG2	1:G:935:ARG:NH2	2.20	0.56
1:E:868:GLY:HA2	1:E:880:LEU:HD22	1.88	0.56
1:E:882:ARG:NH1	1:E:899:SER:O	2.36	0.56
1:G:971:VAL:HG23	1:G:997:LEU:HD22	1.88	0.56
1:C:882:ARG:NH2	1:C:899:SER:O	2.40	0.55
1:E:886:MET:HG2	1:E:935:ARG:NH2	2.22	0.54
1:G:975:LYS:HA	1:G:984:GLU:HG3	1.89	0.54
1:E:907:ALA:HA	1:E:922:LEU:HD13	1.89	0.54
1:I:977:VAL:HG12	1:I:979:ASN:HB2	1.89	0.54
1:E:1031:GLU:OE1	1:E:1037:ARG:NH2	2.41	0.53
1:E:928:ARG:NH2	1:E:1016:ASP:OD2	2.35	0.53
1:A:971:VAL:HG23	1:A:997:LEU:HD22	1.89	0.53
1:G:935:ARG:HD2	5:G:1107:GOL:H11	1.93	0.51
1:I:880:LEU:HD23	1:I:880:LEU:H	1.74	0.51
1:I:944:LYS:HG3	6:I:1214:HOH:O	2.09	0.51
1:I:975:LYS:NZ	1:I:980:GLY:O	2.43	0.51
1:G:999:GLN:HG2	1:G:1003:LYS:HE3	1.94	0.50
1:C:970:ARG:HH21	5:C:1109:GOL:H2	1.77	0.49
1:E:972:ILE:O	1:E:972:ILE:HG13	2.13	0.49
1:A:906:TYR:O	1:A:922:LEU:HD12	2.13	0.49
1:A:975:LYS:HG2	1:A:977:VAL:H	1.78	0.48
1:E:1027:GLU:HG2	1:E:1038:PRO:HG2	1.96	0.48
1:C:907:ALA:HB3	1:C:910:LYS:HG3	1.96	0.47
1:G:1045:ASP:OD2	1:G:1047:PRO:HD2	2.15	0.46
1:I:971:VAL:HG23	1:I:997:LEU:HD22	1.97	0.46
1:E:1069:ARG:O	1:E:1070:ARG:HB2	2.16	0.46
1:G:913:GLU:HA	1:G:914:PRO:HD3	1.74	0.46

Continued on next page...

Continued from previous page...

Atom-1	Atom-2	Interatomic distance (Å)	Clash overlap (Å)
1:C:975:LYS:HG2	1:C:977:VAL:O	2.16	0.45
1:C:979:ASN:OD1	1:C:979:ASN:N	2.47	0.45
1:I:1064:GLY:HA3	1:I:1067:ILE:HD12	1.98	0.45
1:K:1018:ALA:HA	1:K:1021:TYR:CG	2.52	0.44
1:E:913:GLU:HB2	1:E:916:CYS:HB2	1.98	0.44
1:G:975:LYS:HD3	1:G:982:ARG:O	2.18	0.44
1:I:869:ILE:HD12	1:I:899:SER:HB2	2.00	0.44
1:K:972:ILE:HG12	1:K:972:ILE:H	1.59	0.44
1:E:879:ALA:O	1:E:881:ALA:N	2.47	0.44
1:C:911:CYS:O	1:C:919:LYS:HE3	2.18	0.43
1:I:975:LYS:HB3	6:I:1210:HOH:O	2.19	0.43
1:C:977:VAL:HA	1:C:978:PRO:HD2	1.90	0.43
1:E:868:GLY:HA2	1:E:880:LEU:HB3	2.01	0.43
1:G:868:GLY:HA2	1:G:880:LEU:HB3	2.01	0.43
1:I:913:GLU:HG3	1:I:925:HIS:CD2	2.54	0.43
1:A:875:LYS:HD3	1:A:875:LYS:HA	1.86	0.42
1:C:971:VAL:HG23	1:C:997:LEU:HD22	2.00	0.42
1:A:975:LYS:HD3	1:A:980:GLY:HA3	2.01	0.42
1:I:911:CYS:HA	1:I:912:PRO:HD3	1.76	0.42
1:C:1056:LYS:HE2	1:C:1056:LYS:HB2	1.91	0.42
1:A:878:TYR:HD2	1:E:979:ASN:HB2	1.85	0.42
1:K:1045:ASP:HB2	1:K:1047:PRO:HD2	2.01	0.42
1:A:1064:GLY:HA3	1:A:1067:ILE:HD12	2.02	0.41
1:C:1060:GLU:O	1:C:1062:PRO:HD3	2.21	0.41
1:A:879:ALA:O	1:A:881:ALA:N	2.53	0.41
1:K:977:VAL:HA	1:K:978:PRO:HD2	1.84	0.41
1:E:1018:ALA:HA	1:E:1021:TYR:CG	2.56	0.41
1:I:867:ASN:ND2	1:I:880:LEU:HD21	2.36	0.41
1:I:1027:GLU:HG3	1:I:1038:PRO:HG2	2.03	0.41
1:I:975:LYS:HG3	1:I:975:LYS:H	1.64	0.41
1:A:1009:LEU:CD2	5:A:1110:GOL:H12	2.51	0.41
1:G:911:CYS:SG	1:G:913:GLU:HB2	2.61	0.41
1:K:886:MET:HG2	1:K:935:ARG:NH2	2.36	0.41
1:C:869:ILE:HG13	1:C:880:LEU:HA	2.02	0.40
1:G:882:ARG:HH22	1:G:899:SER:C	2.24	0.40
1:A:890:CYS:SG	1:A:892:GLN:HB2	2.61	0.40
1:K:868:GLY:N	1:K:880:LEU:HD22	2.36	0.40

There are no symmetry-related clashes.

5.3 Torsion angles

5.3.1 Protein backbone

In the following table, the Percentiles column shows the percent Ramachandran outliers of the chain as a percentile score with respect to all X-ray entries followed by that with respect to entries of similar resolution.

The Analysed column shows the number of residues for which the backbone conformation was analysed, and the total number of residues.

Mol	Chain	Analysed	Favoured	Allowed	Outliers	Percentiles	
1	A	193/225 (86%)	191 (99%)	2 (1%)	0	100	100
1	C	194/225 (86%)	189 (97%)	5 (3%)	0	100	100
1	E	194/225 (86%)	188 (97%)	6 (3%)	0	100	100
1	G	193/225 (86%)	186 (96%)	7 (4%)	0	100	100
1	I	193/225 (86%)	184 (95%)	9 (5%)	0	100	100
1	K	193/225 (86%)	187 (97%)	6 (3%)	0	100	100
All	All	1160/1350 (86%)	1125 (97%)	35 (3%)	0	100	100

There are no Ramachandran outliers to report.

5.3.2 Protein sidechains

In the following table, the Percentiles column shows the percent sidechain outliers of the chain as a percentile score with respect to all X-ray entries followed by that with respect to entries of similar resolution.

The Analysed column shows the number of residues for which the sidechain conformation was analysed, and the total number of residues.

Mol	Chain	Analysed	Rotameric	Outliers	Percentiles	
1	A	168/187 (90%)	167 (99%)	1 (1%)	86	90
1	C	168/187 (90%)	166 (99%)	2 (1%)	71	77
1	E	168/187 (90%)	167 (99%)	1 (1%)	86	90
1	G	167/187 (89%)	165 (99%)	2 (1%)	71	77
1	I	168/187 (90%)	164 (98%)	4 (2%)	49	52
1	K	168/187 (90%)	161 (96%)	7 (4%)	30	29
All	All	1007/1122 (90%)	990 (98%)	17 (2%)	60	66

All (17) residues with a non-rotameric sidechain are listed below:

Mol	Chain	Res	Type
1	A	880	LEU
1	C	952	MET
1	C	1066	SER
1	E	983	ASP
1	G	982	ARG
1	G	1031	GLU
1	I	880	LEU
1	I	979	ASN
1	I	1027	GLU
1	I	1059	GLU
1	K	880	LEU
1	K	922	LEU
1	K	952	MET
1	K	975	LYS
1	K	983	ASP
1	K	1037	ARG
1	K	1050	GLN

Some sidechains can be flipped to improve hydrogen bonding and reduce clashes. There are no such sidechains identified.

5.3.3 RNA [i](#)

There are no RNA molecules in this entry.

5.4 Non-standard residues in protein, DNA, RNA chains [i](#)

There are no non-standard protein/DNA/RNA residues in this entry.

5.5 Carbohydrates [i](#)

There are no monosaccharides in this entry.

5.6 Ligand geometry [i](#)

Of 49 ligands modelled in this entry, 33 are monoatomic - leaving 16 for Mogul analysis.

In the following table, the Counts columns list the number of bonds (or angles) for which Mogul statistics could be retrieved, the number of bonds (or angles) that are observed in the model and

the number of bonds (or angles) that are defined in the Chemical Component Dictionary. The Link column lists molecule types, if any, to which the group is linked. The Z score for a bond length (or angle) is the number of standard deviations the observed value is removed from the expected value. A bond length (or angle) with $|Z| > 2$ is considered an outlier worth inspection. RMSZ is the root-mean-square of all Z scores of the bond lengths (or angles).

Mol	Type	Chain	Res	Link	Bond lengths			Bond angles		
					Counts	RMSZ	# Z > 2	Counts	RMSZ	# Z > 2
5	GOL	A	1109	-	5,5,5	0.37	0	5,5,5	0.40	0
5	GOL	C	1109	-	5,5,5	0.39	0	5,5,5	0.43	0
5	GOL	E	1108	-	5,5,5	0.42	0	5,5,5	0.40	0
5	GOL	K	1107	-	5,5,5	0.33	0	5,5,5	0.41	0
5	GOL	C	1108	-	5,5,5	0.30	0	5,5,5	0.42	0
3	D60	G	1105	-	28,35,35	2.92	10 (35%)	37,50,50	1.89	6 (16%)
3	D60	A	1105	-	28,35,35	2.63	7 (25%)	37,50,50	1.81	8 (21%)
3	D60	C	1105	-	28,35,35	2.93	8 (28%)	37,50,50	1.59	4 (10%)
3	D60	E	1105	-	28,35,35	2.95	8 (28%)	37,50,50	1.93	7 (18%)
5	GOL	C	1107	-	5,5,5	0.29	0	5,5,5	0.28	0
5	GOL	K	1108	-	5,5,5	0.34	0	5,5,5	0.33	0
5	GOL	A	1110	-	5,5,5	0.39	0	5,5,5	0.36	0
3	D60	K	1105	-	28,35,35	2.42	6 (21%)	37,50,50	1.84	8 (21%)
3	D60	I	1105	-	28,35,35	2.74	8 (28%)	37,50,50	1.95	8 (21%)
5	GOL	E	1107	-	5,5,5	0.45	0	5,5,5	0.47	0
5	GOL	G	1107	-	5,5,5	0.28	0	5,5,5	0.38	0

In the following table, the Chirals column lists the number of chiral outliers, the number of chiral centers analysed, the number of these observed in the model and the number defined in the Chemical Component Dictionary. Similar counts are reported in the Torsion and Rings columns. '-' means no outliers of that kind were identified.

Mol	Type	Chain	Res	Link	Chirals	Torsions	Rings
5	GOL	A	1109	-	-	0/4/4/4	-
5	GOL	C	1109	-	-	0/4/4/4	-
5	GOL	E	1108	-	-	4/4/4/4	-
5	GOL	K	1107	-	-	2/4/4/4	-
5	GOL	C	1108	-	-	2/4/4/4	-
3	D60	G	1105	-	-	5/17/21/21	0/4/4/4
3	D60	A	1105	-	-	4/17/21/21	0/4/4/4
3	D60	C	1105	-	-	3/17/21/21	0/4/4/4
3	D60	E	1105	-	-	6/17/21/21	0/4/4/4
5	GOL	C	1107	-	-	2/4/4/4	-
5	GOL	K	1108	-	-	4/4/4/4	-

Continued on next page...

Continued from previous page...

Mol	Type	Chain	Res	Link	Chirals	Torsions	Rings
5	GOL	A	1110	-	-	2/4/4/4	-
3	D60	K	1105	-	-	4/17/21/21	0/4/4/4
3	D60	I	1105	-	-	3/17/21/21	0/4/4/4
5	GOL	E	1107	-	-	4/4/4/4	-
5	GOL	G	1107	-	-	2/4/4/4	-

All (47) bond length outliers are listed below:

Mol	Chain	Res	Type	Atoms	Z	Observed(Å)	Ideal(Å)
3	G	1105	D60	N4-N3	-7.19	1.23	1.37
3	C	1105	D60	N4-N3	-6.99	1.24	1.37
3	E	1105	D60	C3-C11	-6.79	1.40	1.47
3	E	1105	D60	N4-N3	-6.50	1.25	1.37
3	C	1105	D60	C3-C11	-6.44	1.41	1.47
3	A	1105	D60	C2-C1	-6.41	1.33	1.49
3	A	1105	D60	C3-C11	-6.38	1.41	1.47
3	C	1105	D60	C12-C4	-6.37	1.39	1.51
3	G	1105	D60	C3-C11	-6.33	1.41	1.47
3	K	1105	D60	C21-C18	-6.27	1.33	1.49
3	K	1105	D60	C2-C1	-6.26	1.33	1.49
3	I	1105	D60	C2-C1	-6.25	1.33	1.49
3	E	1105	D60	C21-C18	-6.14	1.33	1.49
3	I	1105	D60	C12-C4	-6.09	1.40	1.51
3	A	1105	D60	C12-C4	-6.07	1.40	1.51
3	G	1105	D60	C21-C18	-6.06	1.33	1.49
3	E	1105	D60	C12-C4	-6.03	1.40	1.51
3	C	1105	D60	C2-C1	-5.99	1.34	1.49
3	G	1105	D60	C2-C1	-5.97	1.34	1.49
3	A	1105	D60	C21-C18	-5.89	1.34	1.49
3	G	1105	D60	C12-C4	-5.88	1.40	1.51
3	E	1105	D60	C2-C1	-5.86	1.34	1.49
3	C	1105	D60	C21-C18	-5.85	1.34	1.49
3	I	1105	D60	C21-C18	-5.83	1.34	1.49
3	I	1105	D60	C3-C11	-5.51	1.42	1.47
3	K	1105	D60	C12-C4	-5.45	1.41	1.51
3	K	1105	D60	C3-C11	-5.19	1.42	1.47
3	I	1105	D60	N4-N3	-4.97	1.28	1.37
3	I	1105	D60	F1-C19	-4.25	1.24	1.35
3	E	1105	D60	F1-C19	-4.05	1.25	1.35
3	A	1105	D60	N4-N3	-3.69	1.30	1.37
3	C	1105	D60	F1-C19	-3.44	1.26	1.35

Continued on next page...

Continued from previous page...

Mol	Chain	Res	Type	Atoms	Z	Observed(Å)	Ideal(Å)
3	G	1105	D60	C13-C14	3.07	1.55	1.51
3	G	1105	D60	C8-C1	-2.93	1.33	1.38
3	A	1105	D60	C8-C1	-2.89	1.33	1.38
3	E	1105	D60	C8-C1	-2.81	1.33	1.38
3	C	1105	D60	C8-C1	-2.79	1.33	1.38
3	E	1105	D60	C13-C14	2.72	1.55	1.51
3	K	1105	D60	C8-C1	-2.66	1.33	1.38
3	G	1105	D60	F1-C19	-2.52	1.29	1.35
3	I	1105	D60	C8-C1	-2.50	1.33	1.38
3	C	1105	D60	C13-C14	2.37	1.54	1.51
3	A	1105	D60	C13-C14	2.22	1.54	1.51
3	I	1105	D60	F2-C16	-2.17	1.30	1.35
3	K	1105	D60	C13-C14	2.08	1.54	1.51
3	G	1105	D60	C8-N1	-2.02	1.33	1.35
3	G	1105	D60	C15-C14	-2.01	1.40	1.49

All (41) bond angle outliers are listed below:

Mol	Chain	Res	Type	Atoms	Z	Observed(°)	Ideal(°)
3	E	1105	D60	C10-N1-N2	6.00	127.55	120.50
3	A	1105	D60	C9-N2-N1	5.89	110.36	104.23
3	C	1105	D60	C9-N2-N1	5.64	110.10	104.23
3	K	1105	D60	C9-N2-N1	5.62	110.08	104.23
3	G	1105	D60	C9-N2-N1	5.49	109.94	104.23
3	I	1105	D60	C9-N2-N1	5.37	109.82	104.23
3	I	1105	D60	C10-N1-N2	5.27	126.70	120.50
3	G	1105	D60	C10-N1-N2	4.96	126.33	120.50
3	E	1105	D60	C9-N2-N1	4.85	109.28	104.23
3	G	1105	D60	C20-C19-C15	-4.73	119.63	123.94
3	K	1105	D60	C20-C19-C15	-4.34	119.99	123.94
3	I	1105	D60	C20-C19-C15	-4.03	120.27	123.94
3	E	1105	D60	C20-C19-C15	-3.99	120.30	123.94
3	A	1105	D60	C20-C19-C15	-3.75	120.53	123.94
3	A	1105	D60	C10-N1-N2	3.59	124.73	120.50
3	C	1105	D60	C20-C19-C15	-3.40	120.84	123.94
3	K	1105	D60	C23-C21-C18	-3.35	123.36	127.74
3	I	1105	D60	C8-N1-N2	-3.29	108.69	111.56
3	K	1105	D60	F1-C19-C15	3.27	123.10	118.01
3	G	1105	D60	F1-C19-C15	3.11	122.85	118.01
3	G	1105	D60	C17-C16-C15	-3.01	121.20	123.94
3	E	1105	D60	C8-C1-C2	-2.95	123.88	127.74
3	A	1105	D60	C17-C16-C15	-2.90	121.30	123.94

Continued on next page...

Continued from previous page...

Mol	Chain	Res	Type	Atoms	Z	Observed(°)	Ideal(°)
3	I	1105	D60	C8-C1-C2	-2.88	123.97	127.74
3	C	1105	D60	C17-C16-C15	-2.87	121.32	123.94
3	E	1105	D60	F1-C19-C15	2.84	122.44	118.01
3	K	1105	D60	C17-C16-C15	-2.76	121.43	123.94
3	I	1105	D60	F1-C19-C15	2.66	122.15	118.01
3	K	1105	D60	C10-N1-N2	2.55	123.50	120.50
3	I	1105	D60	C17-C16-C15	-2.54	121.62	123.94
3	E	1105	D60	C8-N1-N2	-2.52	109.36	111.56
3	E	1105	D60	C17-C16-C15	-2.50	121.66	123.94
3	A	1105	D60	C8-N1-N2	-2.50	109.38	111.56
3	G	1105	D60	C18-C20-C19	2.49	121.71	119.59
3	C	1105	D60	C10-N1-N2	2.39	123.31	120.50
3	K	1105	D60	C9-C1-C2	-2.27	124.77	127.74
3	K	1105	D60	C5-C3-C11	-2.25	116.86	120.20
3	I	1105	D60	C18-C20-C19	2.22	121.48	119.59
3	A	1105	D60	C5-C3-C11	-2.20	116.93	120.20
3	A	1105	D60	C22-C21-C18	-2.18	124.89	127.74
3	A	1105	D60	F1-C19-C15	2.16	121.37	118.01

There are no chirality outliers.

All (47) torsion outliers are listed below:

Mol	Chain	Res	Type	Atoms
5	E	1108	GOL	O1-C1-C2-C3
5	E	1108	GOL	C1-C2-C3-O3
5	E	1108	GOL	O2-C2-C3-O3
5	C	1108	GOL	O1-C1-C2-O2
5	C	1108	GOL	O1-C1-C2-C3
5	K	1107	GOL	O1-C1-C2-C3
5	K	1108	GOL	O1-C1-C2-C3
3	E	1105	D60	C13-C14-C15-C16
3	E	1105	D60	O3-C14-C15-C16
3	C	1105	D60	C12-C13-C14-O3
5	C	1107	GOL	O1-C1-C2-C3
5	E	1107	GOL	O1-C1-C2-C3
5	E	1107	GOL	C1-C2-C3-O3
5	G	1107	GOL	C1-C2-C3-O3
5	K	1108	GOL	C1-C2-C3-O3
5	E	1108	GOL	O1-C1-C2-O2
5	E	1107	GOL	O2-C2-C3-O3
5	G	1107	GOL	O2-C2-C3-O3
3	C	1105	D60	C12-C13-C14-C15

Continued on next page...

Continued from previous page...

Mol	Chain	Res	Type	Atoms
3	G	1105	D60	O3-C14-C15-C19
3	K	1105	D60	O3-C14-C15-C19
3	E	1105	D60	O3-C14-C15-C19
5	K	1107	GOL	O1-C1-C2-O2
5	E	1107	GOL	O1-C1-C2-O2
5	K	1108	GOL	O1-C1-C2-O2
5	K	1108	GOL	O2-C2-C3-O3
3	E	1105	D60	C13-C14-C15-C19
3	I	1105	D60	C12-C13-C14-O3
3	I	1105	D60	C12-C13-C14-C15
3	G	1105	D60	O3-C14-C15-C16
3	G	1105	D60	C12-C13-C14-O3
3	G	1105	D60	C12-C13-C14-C15
3	E	1105	D60	C12-C13-C14-C15
3	K	1105	D60	C12-C13-C14-C15
3	A	1105	D60	C12-C13-C14-C15
3	A	1105	D60	C12-C13-C14-O3
5	C	1107	GOL	O1-C1-C2-O2
3	C	1105	D60	O3-C14-C15-C19
3	K	1105	D60	O3-C14-C15-C16
3	I	1105	D60	O3-C14-C15-C19
3	G	1105	D60	C13-C14-C15-C19
3	K	1105	D60	C12-C13-C14-O3
5	A	1110	GOL	C1-C2-C3-O3
3	E	1105	D60	C12-C13-C14-O3
3	A	1105	D60	O3-C14-C15-C19
3	A	1105	D60	O3-C14-C15-C16
5	A	1110	GOL	O2-C2-C3-O3

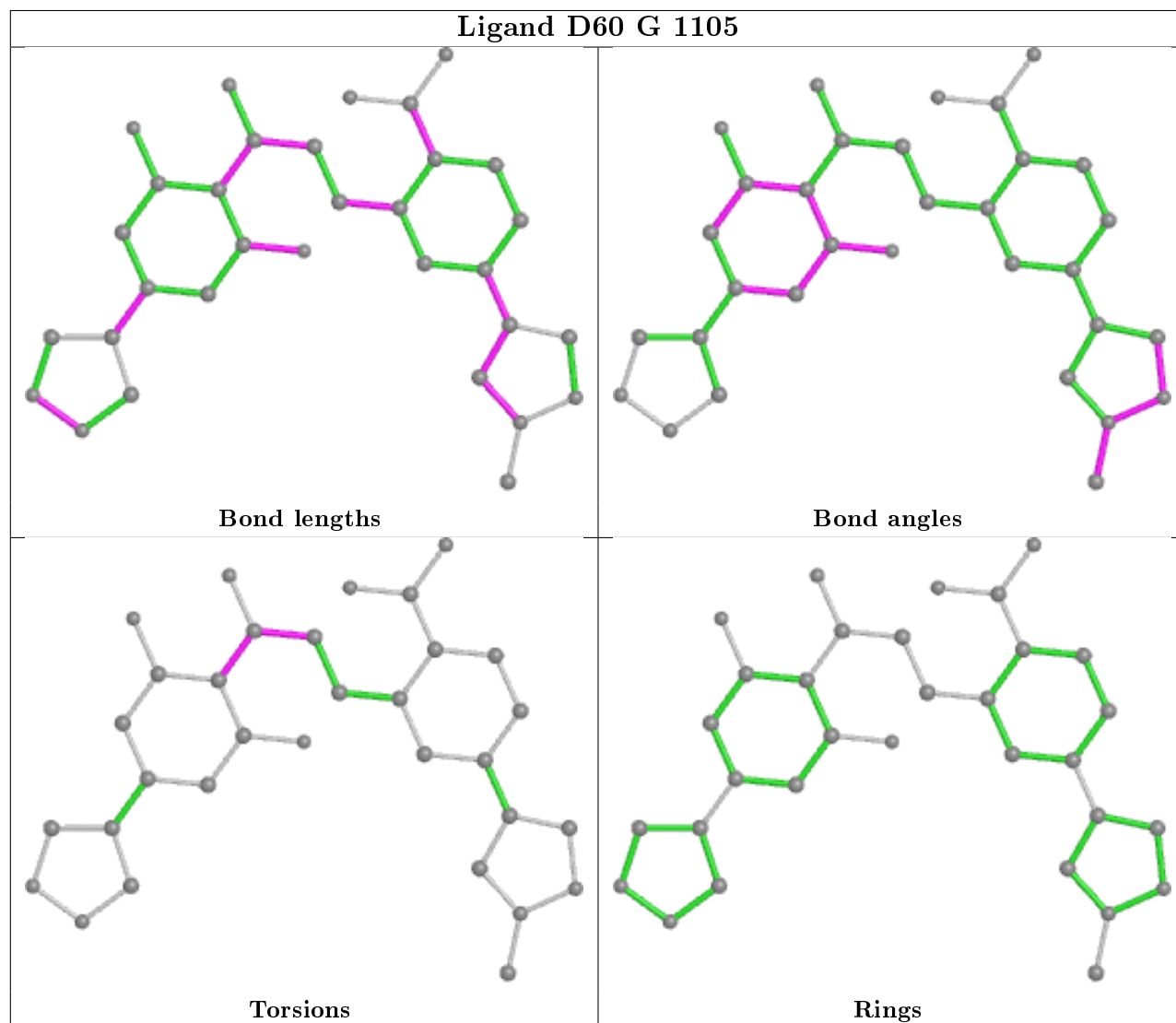
There are no ring outliers.

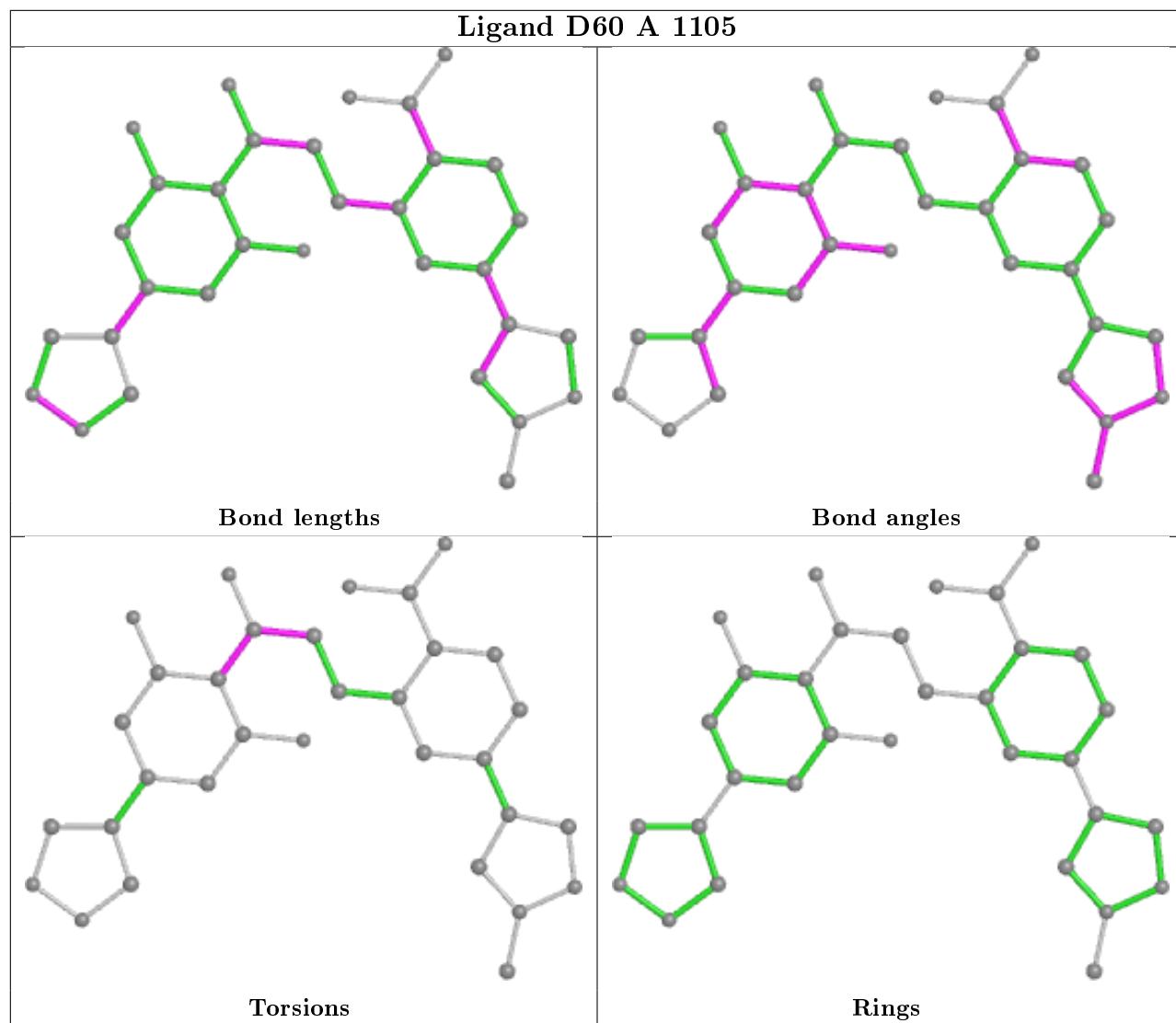
3 monomers are involved in 3 short contacts:

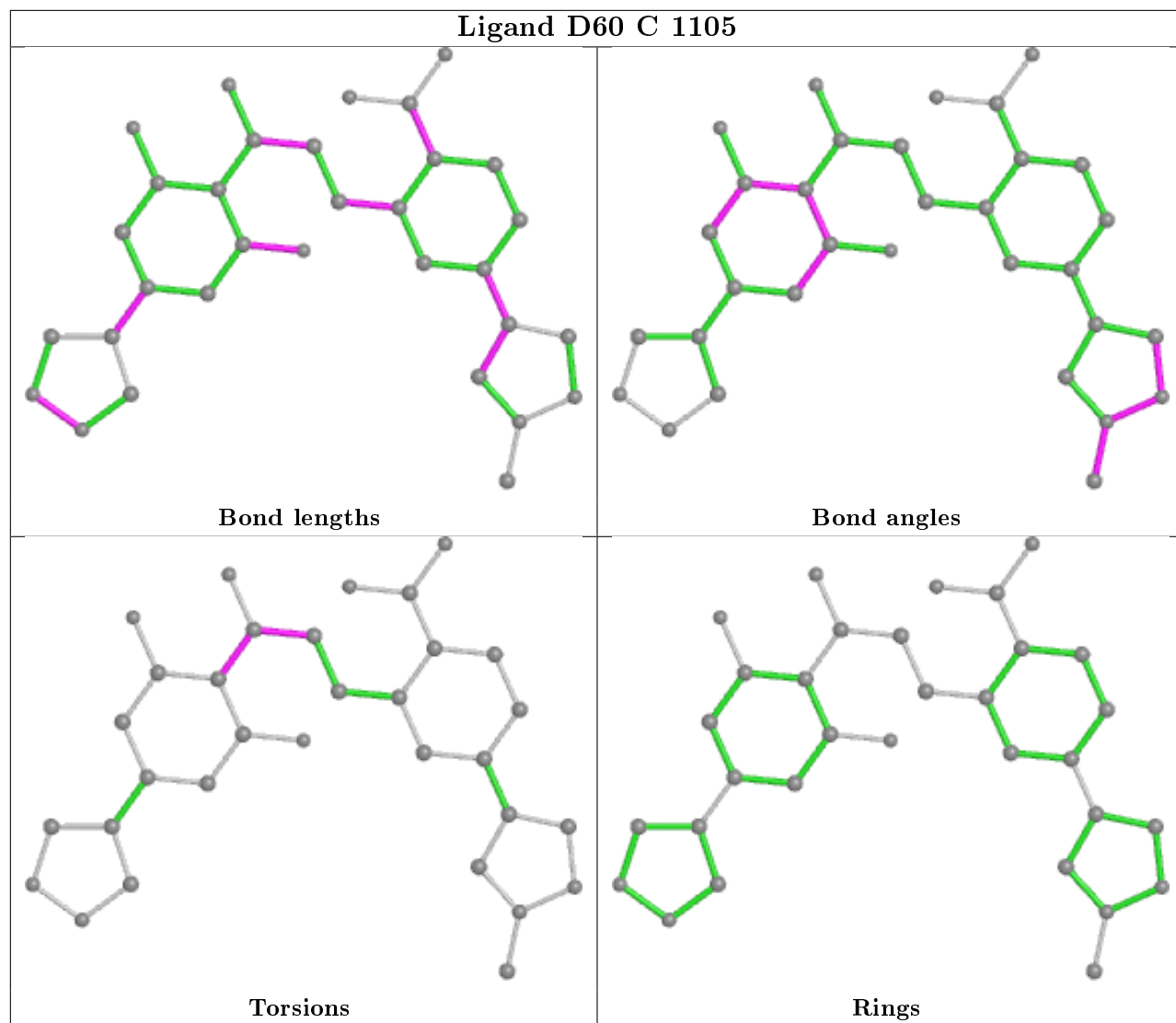
Mol	Chain	Res	Type	Clashes	Symm-Clashes
5	C	1109	GOL	1	0
5	A	1110	GOL	1	0
5	G	1107	GOL	1	0

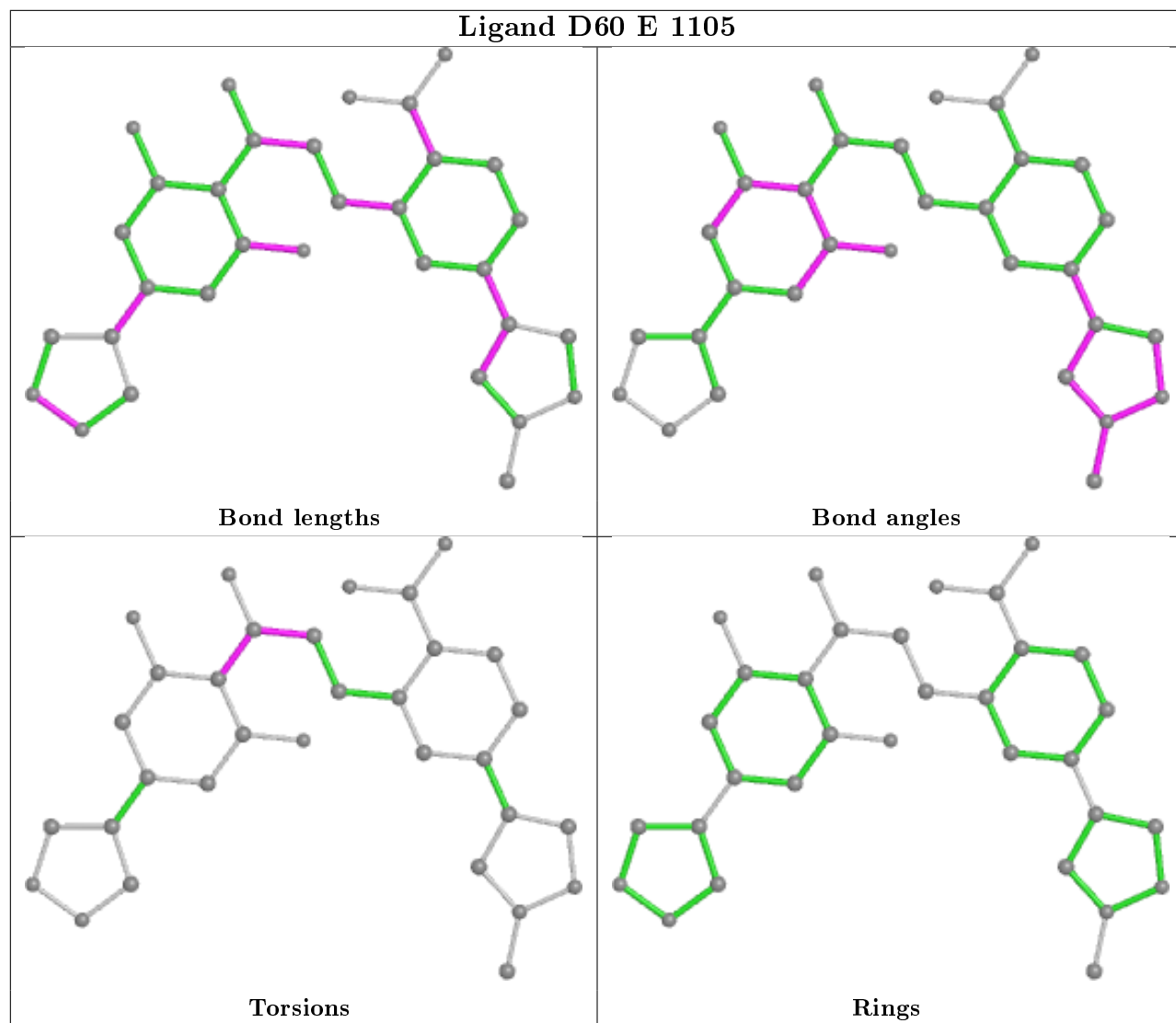
The following is a two-dimensional graphical depiction of Mogul quality analysis of bond lengths, bond angles, torsion angles, and ring geometry for all instances of the Ligand of Interest. In addition, ligands with molecular weight > 250 and outliers as shown on the validation Tables will also be included. For torsion angles, if less than 5% of the Mogul distribution of torsion angles is within 10 degrees of the torsion angle in question, then that torsion angle is considered an outlier.

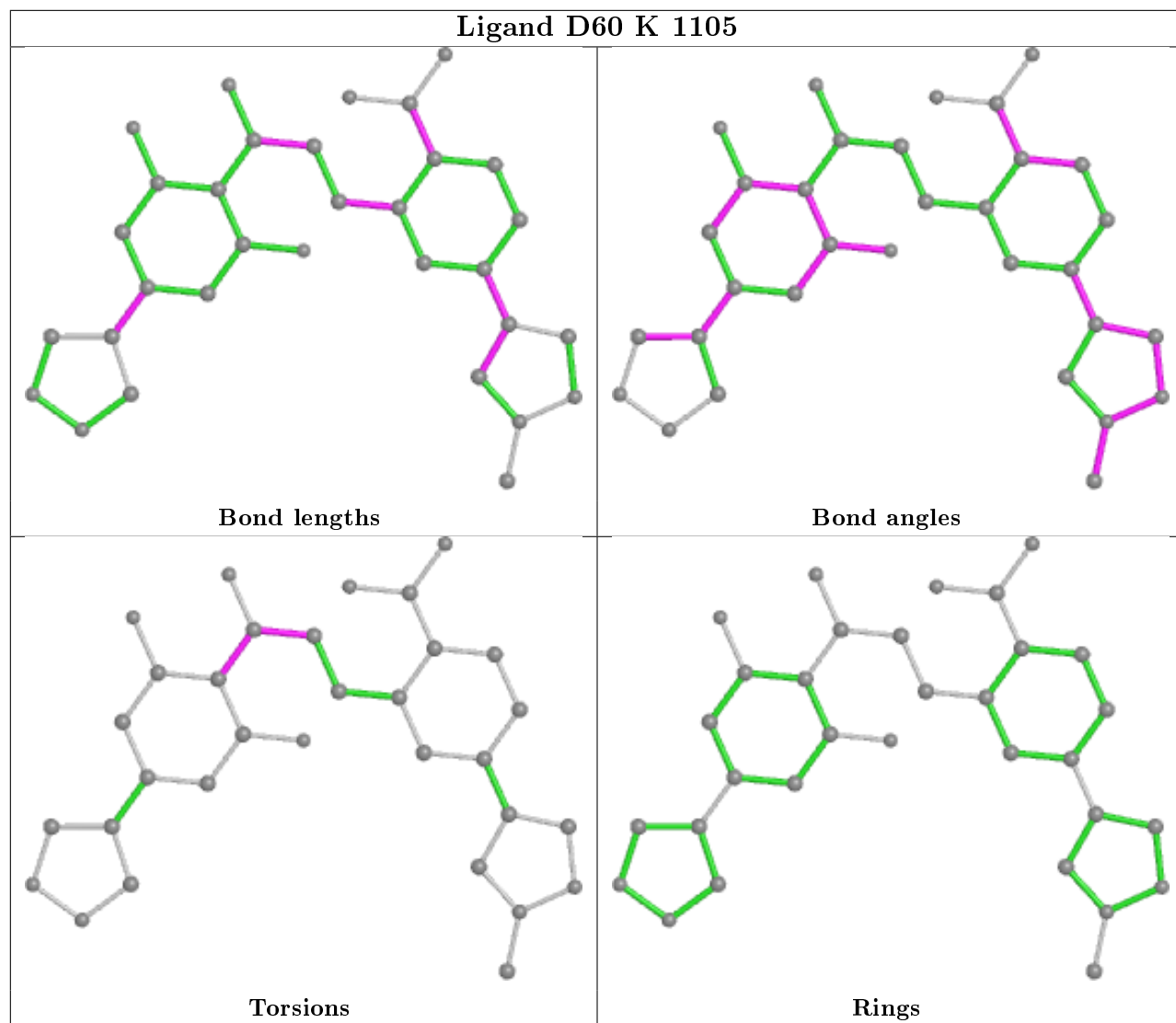
Any bond that is central to one or more torsion angles identified as an outlier by Mogul will be highlighted in the graph. For rings, the root-mean-square deviation (RMSD) between the ring in question and similar rings identified by Mogul is calculated over all ring torsion angles. If the average RMSD is greater than 60 degrees and the minimal RMSD between the ring in question and any Mogul-identified rings is also greater than 60 degrees, then that ring is considered an outlier. The outliers are highlighted in purple. The color gray indicates Mogul did not find sufficient equivalents in the CSD to analyse the geometry.

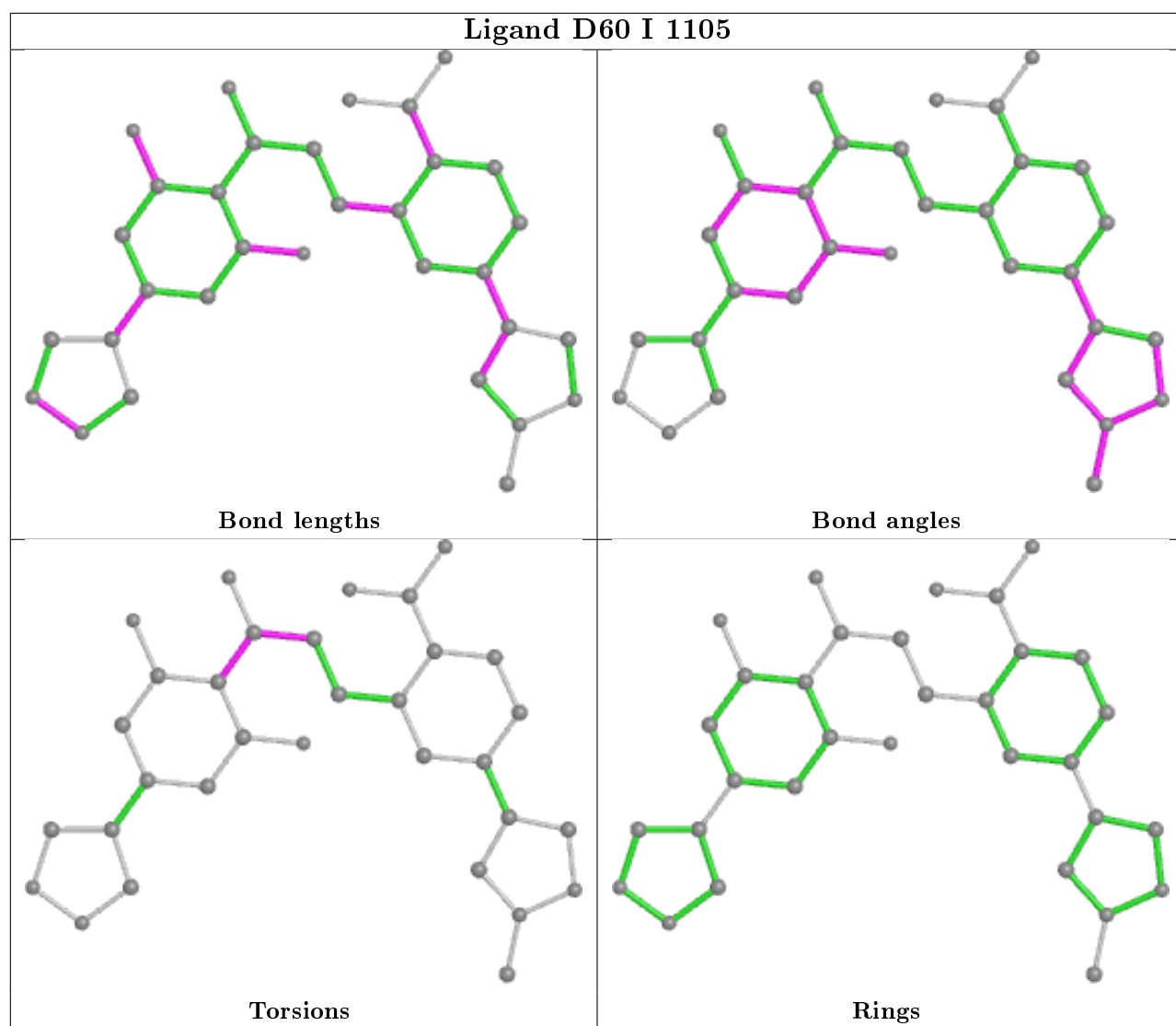












5.7 Other polymers [i](#)

There are no such residues in this entry.

5.8 Polymer linkage issues [i](#)

There are no chain breaks in this entry.

6 Fit of model and data

6.1 Protein, DNA and RNA chains

In the following table, the column labelled ‘#RSRZ> 2’ contains the number (and percentage) of RSRZ outliers, followed by percent RSRZ outliers for the chain as percentile scores relative to all X-ray entries and entries of similar resolution. The OWAB column contains the minimum, median, 95th percentile and maximum values of the occupancy-weighted average B-factor per residue. The column labelled ‘Q< 0.9’ lists the number of (and percentage) of residues with an average occupancy less than 0.9.

Mol	Chain	Analysed	<RSRZ>	#RSRZ>2	OWAB(Å ²)	Q<0.9
1	A	197/225 (87%)	0.51	8 (4%) 37 43	36, 53, 81, 113	0
1	C	198/225 (88%)	0.53	5 (2%) 57 62	36, 52, 86, 108	0
1	E	198/225 (88%)	0.70	14 (7%) 16 19	40, 59, 93, 102	0
1	G	197/225 (87%)	0.62	9 (4%) 32 37	41, 60, 95, 115	0
1	I	197/225 (87%)	0.65	17 (8%) 10 13	39, 57, 95, 107	0
1	K	197/225 (87%)	0.70	12 (6%) 21 25	36, 58, 94, 117	0
All	All	1184/1350 (87%)	0.62	65 (5%) 25 30	36, 57, 92, 117	0

All (65) RSRZ outliers are listed below:

Mol	Chain	Res	Type	RSRZ
1	E	1046	PRO	5.9
1	K	879	ALA	5.7
1	I	1041	LEU	5.4
1	K	1023	VAL	5.2
1	E	1047	PRO	4.7
1	K	1055	GLN	4.5
1	E	880	LEU	4.4
1	G	979	ASN	4.4
1	I	1042	ALA	4.3
1	E	914	PRO	4.0
1	C	977	VAL	3.8
1	C	976	GLU	3.8
1	I	1037	ARG	3.6
1	I	917	ARG	3.4
1	G	1048	ALA	3.4
1	K	1048	ALA	3.4
1	E	1038	PRO	3.2
1	E	959	ALA	3.2
1	I	1043	GLY	3.2

Continued on next page...

Continued from previous page...

Mol	Chain	Res	Type	RSRZ
1	A	894	ARG	3.0
1	A	880	LEU	2.9
1	G	976	GLU	2.9
1	K	1042	ALA	2.8
1	G	894	ARG	2.7
1	I	1039	GLN	2.7
1	E	1041	LEU	2.7
1	A	982	ARG	2.7
1	G	1023	VAL	2.6
1	E	1042	ALA	2.6
1	C	1037	ARG	2.6
1	I	1047	PRO	2.6
1	I	1070	ARG	2.6
1	E	894	ARG	2.5
1	E	879	ALA	2.5
1	E	1040	PRO	2.5
1	I	876	PHE	2.5
1	K	1045	ASP	2.5
1	C	1041	LEU	2.5
1	A	974	GLN	2.5
1	E	867	ASN	2.5
1	G	914	PRO	2.4
1	I	914	PRO	2.4
1	G	966	GLY	2.4
1	C	894	ARG	2.4
1	I	1040	PRO	2.4
1	G	1037	ARG	2.4
1	I	1059	GLU	2.4
1	I	982	ARG	2.3
1	I	1065	GLN	2.3
1	A	976	GLU	2.3
1	A	914	PRO	2.3
1	E	881	ALA	2.3
1	I	1046	PRO	2.2
1	K	979	ASN	2.2
1	G	972	ILE	2.2
1	I	881	ALA	2.2
1	K	978	PRO	2.2
1	K	1041	LEU	2.1
1	A	1037	ARG	2.1
1	K	1070	ARG	2.1
1	K	1056	LYS	2.1

Continued on next page...

Continued from previous page...

Mol	Chain	Res	Type	RSRZ
1	A	966	GLY	2.1
1	K	1034	LEU	2.1
1	E	977	VAL	2.0
1	I	977	VAL	2.0

6.2 Non-standard residues in protein, DNA, RNA chains [i](#)

There are no non-standard protein/DNA/RNA residues in this entry.

6.3 Carbohydrates [i](#)

There are no monosaccharides in this entry.

6.4 Ligands [i](#)

In the following table, the Atoms column lists the number of modelled atoms in the group and the number defined in the chemical component dictionary. The B-factors column lists the minimum, median, 95th percentile and maximum values of B factors of atoms in the group. The column labelled 'Q< 0.9' lists the number of atoms with occupancy less than 0.9.

Mol	Type	Chain	Res	Atoms	RSCC	RSR	B-factors(\AA^2)	Q<0.9
5	GOL	E	1108	6/6	0.73	0.21	59,70,78,80	0
5	GOL	C	1109	6/6	0.80	0.30	66,67,78,79	0
5	GOL	K	1108	6/6	0.80	0.18	85,87,90,92	0
5	GOL	K	1107	6/6	0.82	0.16	76,77,78,79	0
4	CL	K	1106	1/1	0.84	0.21	81,81,81,81	0
5	GOL	C	1107	6/6	0.85	0.20	60,70,71,81	0
4	CL	A	1108	1/1	0.86	0.35	90,90,90,90	0
5	GOL	A	1109	6/6	0.86	0.17	54,58,61,62	0
4	CL	I	1106	1/1	0.86	0.17	74,74,74,74	0
5	GOL	E	1107	6/6	0.87	0.17	63,69,74,80	0
5	GOL	G	1107	6/6	0.87	0.18	75,80,82,87	0
5	GOL	C	1108	6/6	0.87	0.18	72,77,81,84	0
4	CL	I	1107	1/1	0.88	0.32	86,86,86,86	0
4	CL	G	1106	1/1	0.88	0.16	78,78,78,78	0
5	GOL	A	1110	6/6	0.88	0.18	58,62,66,72	0
3	D60	E	1105	32/32	0.88	0.18	54,67,84,87	0
3	D60	K	1105	32/32	0.90	0.16	41,52,72,76	0
3	D60	G	1105	32/32	0.93	0.14	48,64,80,82	0
3	D60	I	1105	32/32	0.93	0.12	42,51,70,71	0

Continued on next page...

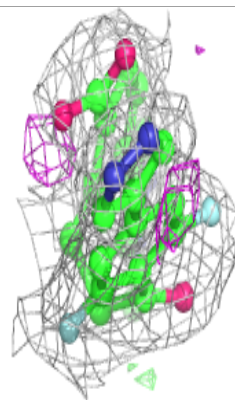
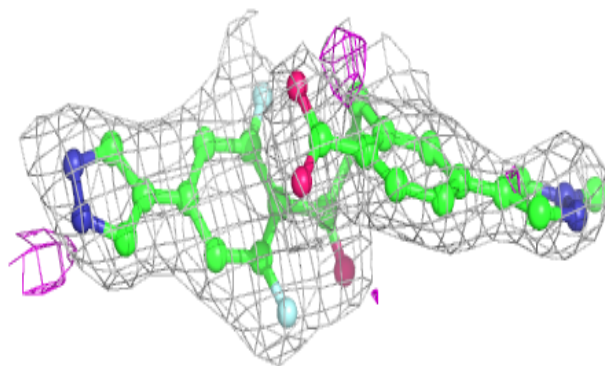
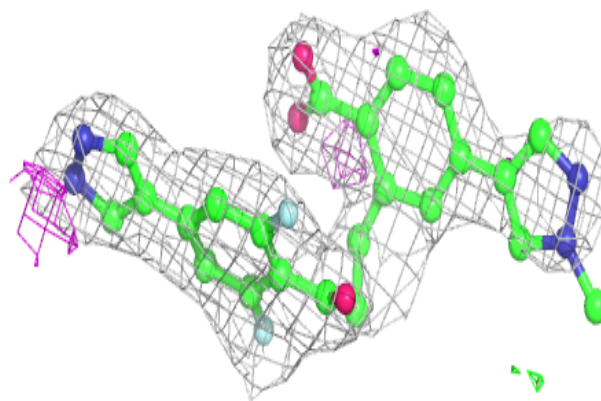
Continued from previous page...

Mol	Type	Chain	Res	Atoms	RSCC	RSR	B-factors(\AA^2)	Q<0.9
3	D60	A	1105	32/32	0.94	0.16	42,48,72,75	0
4	CL	E	1106	1/1	0.95	0.23	72,72,72,72	0
3	D60	C	1105	32/32	0.95	0.14	41,52,68,70	0
2	ZN	G	1101	1/1	0.95	0.13	68,68,68,68	0
4	CL	C	1106	1/1	0.96	0.26	66,66,66,66	0
4	CL	A	1106	1/1	0.97	0.25	73,73,73,73	0
2	ZN	C	1101	1/1	0.97	0.10	59,59,59,59	0
4	CL	A	1107	1/1	0.98	0.10	48,48,48,48	0
2	ZN	K	1101	1/1	0.98	0.14	58,58,58,58	0
2	ZN	A	1101	1/1	0.99	0.12	60,60,60,60	0
2	ZN	E	1102	1/1	0.99	0.18	47,47,47,47	0
2	ZN	K	1103	1/1	0.99	0.14	48,48,48,48	0
2	ZN	G	1103	1/1	0.99	0.13	60,60,60,60	0
2	ZN	E	1103	1/1	0.99	0.15	58,58,58,58	0
2	ZN	A	1102	1/1	0.99	0.19	40,40,40,40	0
2	ZN	K	1104	1/1	0.99	0.19	46,46,46,46	0
2	ZN	G	1102	1/1	0.99	0.19	50,50,50,50	0
2	ZN	A	1103	1/1	0.99	0.16	46,46,46,46	0
2	ZN	E	1104	1/1	0.99	0.17	47,47,47,47	0
2	ZN	E	1101	1/1	0.99	0.09	63,63,63,63	0
2	ZN	I	1101	1/1	0.99	0.10	68,68,68,68	0
2	ZN	A	1104	1/1	1.00	0.16	45,45,45,45	0
2	ZN	C	1102	1/1	1.00	0.17	40,40,40,40	0
2	ZN	I	1102	1/1	1.00	0.16	45,45,45,45	0
2	ZN	C	1103	1/1	1.00	0.15	54,54,54,54	0
2	ZN	I	1103	1/1	1.00	0.14	58,58,58,58	0
2	ZN	C	1104	1/1	1.00	0.18	42,42,42,42	0
2	ZN	I	1104	1/1	1.00	0.18	46,46,46,46	0
2	ZN	K	1102	1/1	1.00	0.18	42,42,42,42	0
2	ZN	G	1104	1/1	1.00	0.17	47,47,47,47	0

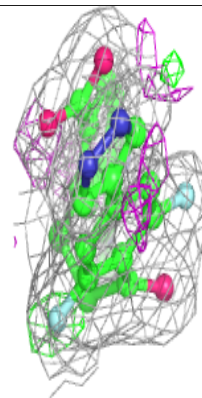
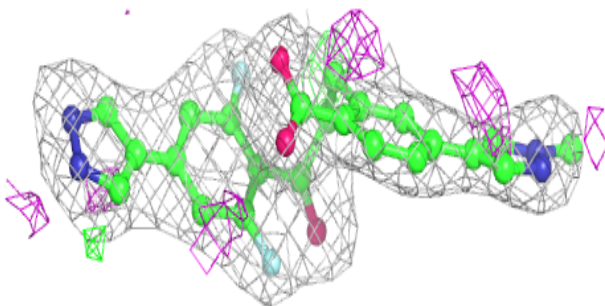
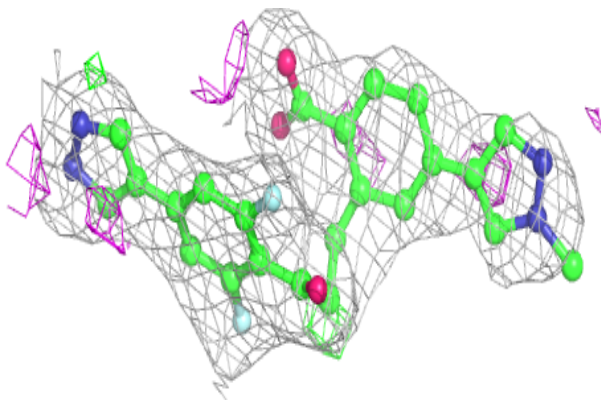
The following is a graphical depiction of the model fit to experimental electron density of all instances of the Ligand of Interest. In addition, ligands with molecular weight > 250 and outliers as shown on the geometry validation Tables will also be included. Each fit is shown from different orientation to approximate a three-dimensional view.

Electron density around D60 E 1105:

$2mF_o-DF_c$ (at 0.7 rmsd) in gray
 mF_o-DF_c (at 3 rmsd) in purple (negative)
and green (positive)

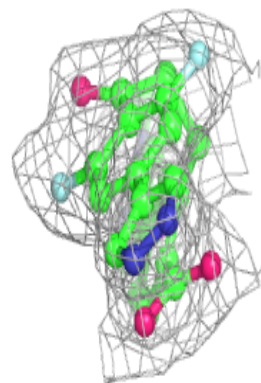
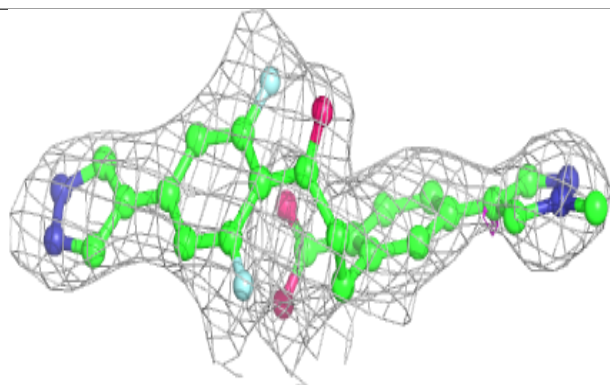
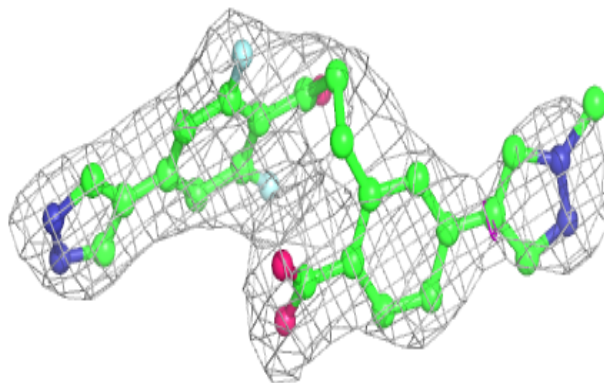
**Electron density around D60 K 1105:**

$2mF_o-DF_c$ (at 0.7 rmsd) in gray
 mF_o-DF_c (at 3 rmsd) in purple (negative)
and green (positive)

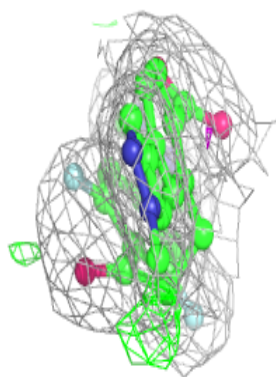
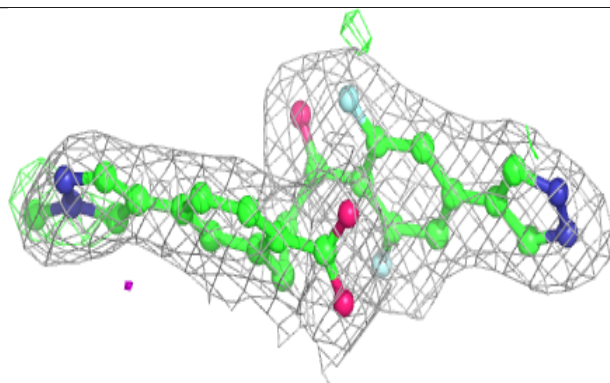
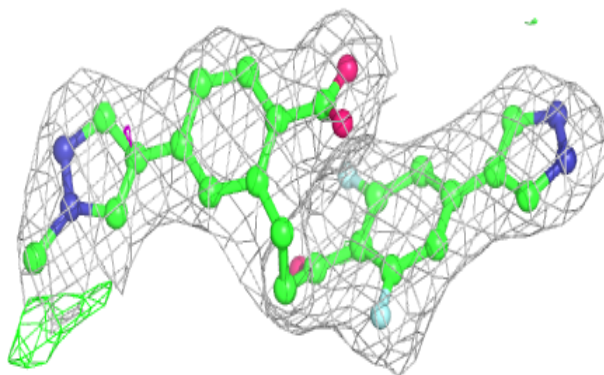


Electron density around D60 G 1105:

$2mF_o-DF_c$ (at 0.7 rmsd) in gray
 mF_o-DF_c (at 3 rmsd) in purple (negative)
and green (positive)

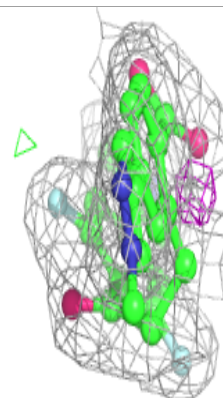
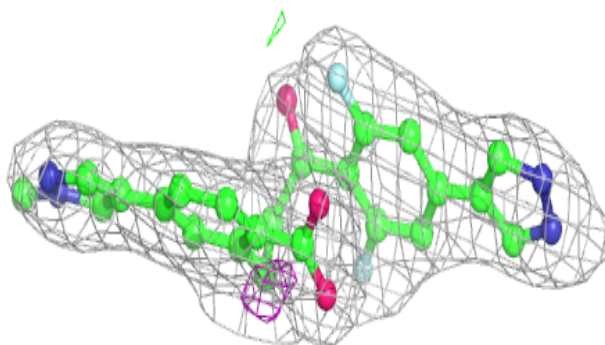
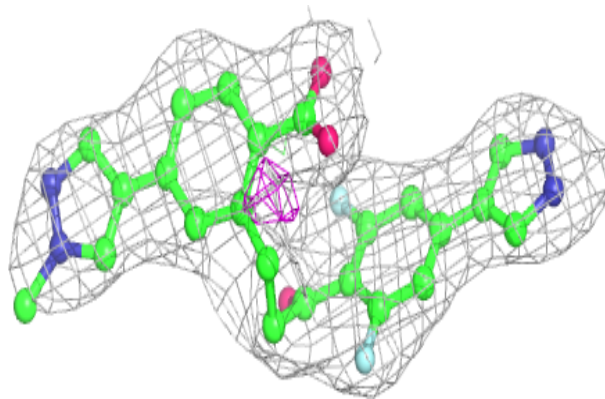
**Electron density around D60 I 1105:**

$2mF_o-DF_c$ (at 0.7 rmsd) in gray
 mF_o-DF_c (at 3 rmsd) in purple (negative)
and green (positive)

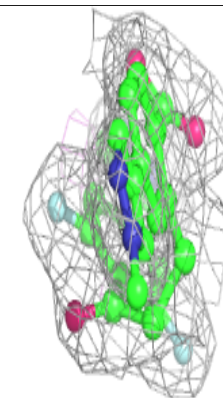
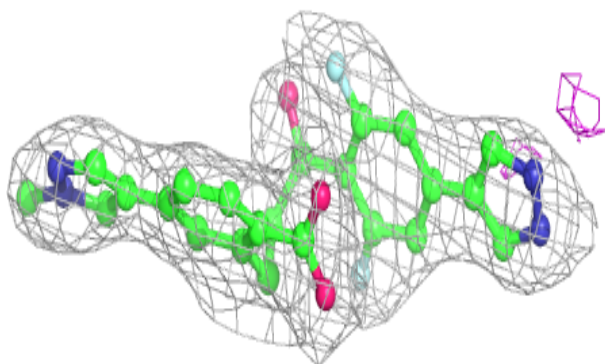
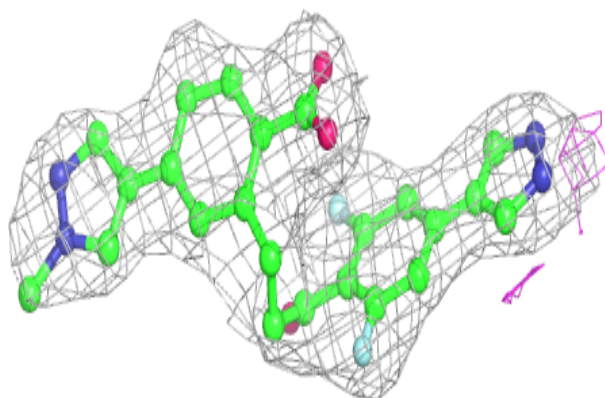


Electron density around D60 A 1105:

$2mF_o-DF_c$ (at 0.7 rmsd) in gray
 mF_o-DF_c (at 3 rmsd) in purple (negative)
and green (positive)

**Electron density around D60 C 1105:**

$2mF_o-DF_c$ (at 0.7 rmsd) in gray
 mF_o-DF_c (at 3 rmsd) in purple (negative)
and green (positive)



6.5 Other polymers [i](#)

There are no such residues in this entry.