



# Full wwPDB X-ray Structure Validation Report ⓘ

Apr 12, 2021 – 10:09 AM EDT

PDB ID : 7KCE  
Title : Crystal structure of human methionine adenosyltransferase 2A (MAT2A) in complex with SAM and allosteric inhibitor compound 2  
Authors : Padyana, A.; Jin, L.  
Deposited on : 2020-10-05  
Resolution : 1.14 Å(reported)

This is a Full wwPDB X-ray Structure Validation Report for a publicly released PDB entry.

We welcome your comments at [validation@mail.wwpdb.org](mailto:validation@mail.wwpdb.org)

A user guide is available at

<https://www.wwpdb.org/validation/2017/XrayValidationReportHelp>

with specific help available everywhere you see the ⓘ symbol.

---

The following versions of software and data (see [references ⓘ](#)) were used in the production of this report:

MolProbity : 4.02b-467  
Mogul : 1.8.5 (274361), CSD as541be (2020)  
Xtriage (Phenix) : 1.13  
EDS : 2.18  
buster-report : 1.1.7 (2018)  
Percentile statistics : 20191225.v01 (using entries in the PDB archive December 25th 2019)  
Refmac : 5.8.0158  
CCP4 : 7.0.044 (Gargrove)  
Ideal geometry (proteins) : Engh & Huber (2001)  
Ideal geometry (DNA, RNA) : Parkinson et al. (1996)  
Validation Pipeline (wwPDB-VP) : 2.18

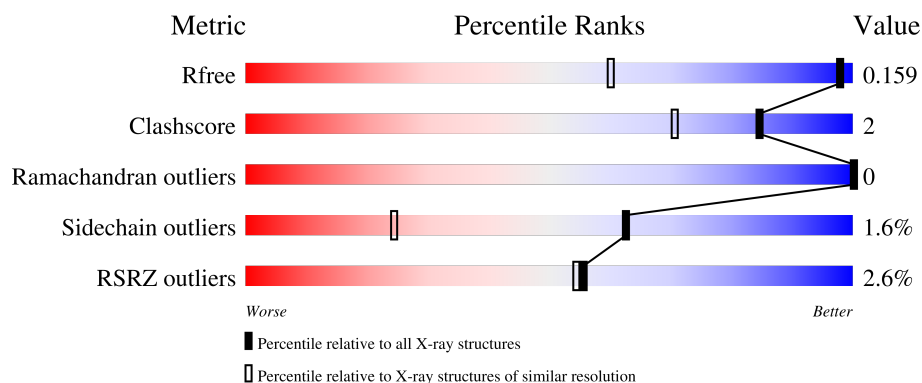
# 1 Overall quality at a glance

The following experimental techniques were used to determine the structure:

*X-RAY DIFFRACTION*

The reported resolution of this entry is 1.14 Å.

Percentile scores (ranging between 0-100) for global validation metrics of the entry are shown in the following graphic. The table shows the number of entries on which the scores are based.



Metric	Whole archive (#Entries)	Similar resolution (#Entries, resolution range(Å))
$R_{free}$	130704	1492 (1.18-1.10)
Clashscore	141614	1537 (1.18-1.10)
Ramachandran outliers	138981	1483 (1.18-1.10)
Sidechain outliers	138945	1480 (1.18-1.10)
RSRZ outliers	127900	1464 (1.18-1.10)

The table below summarises the geometric issues observed across the polymeric chains and their fit to the electron density. The red, orange, yellow and green segments of the lower bar indicate the fraction of residues that contain outliers for  $\geq 3$ , 2, 1 and 0 types of geometric quality criteria respectively. A grey segment represents the fraction of residues that are not modelled. The numeric value for each fraction is indicated below the corresponding segment, with a dot representing fractions  $\leq 5\%$ . The upper red bar (where present) indicates the fraction of residues that have poor fit to the electron density. The numeric value is given above the bar.

Mol	Chain	Length	Quality of chain
1	A	396	

## 2 Entry composition [i](#)

There are 5 unique types of molecules in this entry. The entry contains 7054 atoms, of which 3292 are hydrogens and 0 are deuteriums.

In the tables below, the ZeroOcc column contains the number of atoms modelled with zero occupancy, the AltConf column contains the number of residues with at least one atom in alternate conformation and the Trace column contains the number of residues modelled with at most 2 atoms.

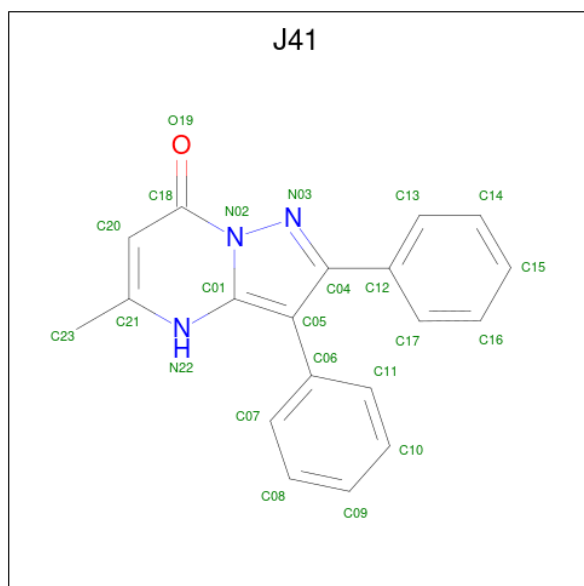
- Molecule 1 is a protein called S-adenosylmethionine synthase isoform type-2.

Mol	Chain	Residues	Atoms						ZeroOcc	AltConf	Trace
1	A	380	Total	C	H	N	O	S	0	39	0
			6414	2013	3255	549	584	13			

There is a discrepancy between the modelled and reference sequences:

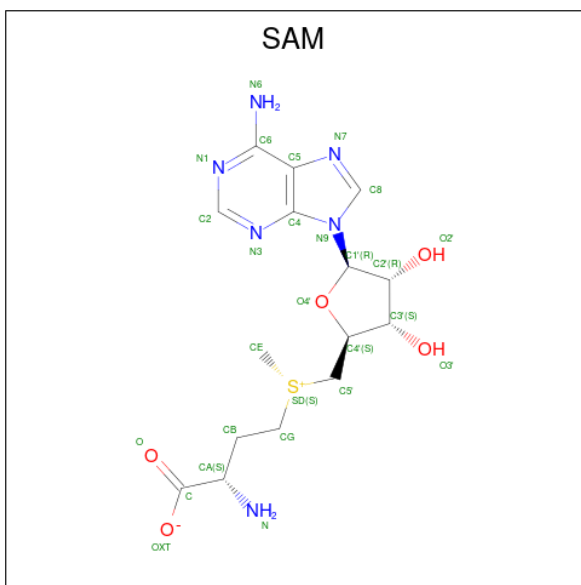
Chain	Residue	Modelled	Actual	Comment	Reference
A	0	SER	-	expression tag	UNP P31153

- Molecule 2 is 5-methyl-2,3-diphenylpyrazolo[1,5-a]pyrimidin-7(4H)-one (three-letter code: J41) (formula: C<sub>19</sub>H<sub>15</sub>N<sub>3</sub>O) (labeled as "Ligand of Interest" by depositor).



Mol	Chain	Residues	Atoms						ZeroOcc	AltConf
2	A	1	Total	C	H	N	O		0	1
			38	19	15	3	1			

- Molecule 3 is S-ADENOSYLMETHIONINE (three-letter code: SAM) (formula: C<sub>15</sub>H<sub>22</sub>N<sub>6</sub>O<sub>5</sub>S).



Mol	Chain	Residues	Atoms						ZeroOcc	AltConf
3	A	1	Total	C	H	N	O	S	0	0
			49	15	22	6	5	1		

- Molecule 4 is CHLORIDE ION (three-letter code: CL) (formula: Cl).

Mol	Chain	Residues	Atoms	ZeroOcc	AltConf
4	A	1	Total Cl 1 1	0	0

- Molecule 5 is water.

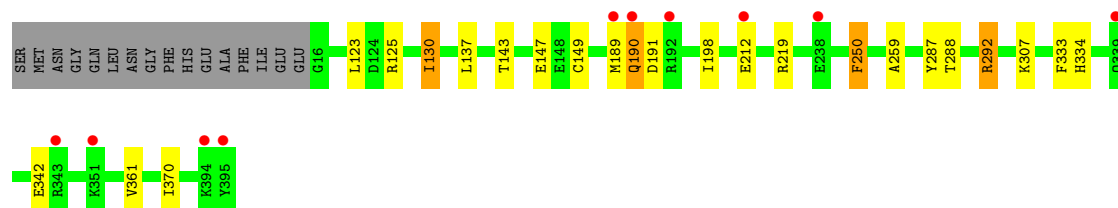
Mol	Chain	Residues	Atoms	ZeroOcc	AltConf
5	A	545	Total O 552 552	0	12

### 3 Residue-property plots

These plots are drawn for all protein, RNA, DNA and oligosaccharide chains in the entry. The first graphic for a chain summarises the proportions of the various outlier classes displayed in the second graphic. The second graphic shows the sequence view annotated by issues in geometry and electron density. Residues are color-coded according to the number of geometric quality criteria for which they contain at least one outlier: green = 0, yellow = 1, orange = 2 and red = 3 or more. A red dot above a residue indicates a poor fit to the electron density ( $RSRZ > 2$ ). Stretches of 2 or more consecutive residues without any outlier are shown as a green connector. Residues present in the sample, but not in the model, are shown in grey.

- Molecule 1: S-adenosylmethionine synthase isoform type-2

Chain A: 



## 4 Data and refinement statistics

Property	Value	Source
Space group	I 2 2 2	Depositor
Cell constants a, b, c, $\alpha$ , $\beta$ , $\gamma$	67.97Å 94.24Å 116.81Å 90.00° 90.00° 90.00°	Depositor
Resolution (Å)	29.37 – 1.14 29.37 – 1.14	Depositor EDS
% Data completeness (in resolution range)	97.0 (29.37-1.14) 97.0 (29.37-1.14)	Depositor EDS
$R_{merge}$	0.04	Depositor
$R_{sym}$	(Not available)	Depositor
$\langle I/\sigma(I) \rangle$ <sup>1</sup>	2.26 (at 1.14Å)	Xtriage
Refinement program	PHENIX 1.17.1_3660	Depositor
R, $R_{free}$	0.144 , 0.159 0.144 , 0.159	Depositor DCC
$R_{free}$ test set	6615 reflections (5.04%)	wwPDB-VP
Wilson B-factor (Å <sup>2</sup> )	9.4	Xtriage
Anisotropy	0.196	Xtriage
Bulk solvent $k_{sol}$ (e/Å <sup>3</sup> ), $B_{sol}$ (Å <sup>2</sup> )	0.48 , 53.5	EDS
L-test for twinning <sup>2</sup>	$\langle  L  \rangle = 0.50$ , $\langle L^2 \rangle = 0.33$	Xtriage
Estimated twinning fraction	No twinning to report.	Xtriage
$F_o, F_c$ correlation	0.98	EDS
Total number of atoms	7054	wwPDB-VP
Average B, all atoms (Å <sup>2</sup> )	13.0	wwPDB-VP

Xtriage's analysis on translational NCS is as follows: *The largest off-origin peak in the Patterson function is 5.27% of the height of the origin peak. No significant pseudotranslation is detected.*

<sup>1</sup>Intensities estimated from amplitudes.

<sup>2</sup>Theoretical values of  $\langle |L| \rangle$ ,  $\langle L^2 \rangle$  for acentric reflections are 0.5, 0.333 respectively for untwinned datasets, and 0.375, 0.2 for perfectly twinned datasets.

## 5 Model quality [i](#)

### 5.1 Standard geometry [i](#)

Bond lengths and bond angles in the following residue types are not validated in this section: SAM, CL, J41

The Z score for a bond length (or angle) is the number of standard deviations the observed value is removed from the expected value. A bond length (or angle) with  $|Z| > 5$  is considered an outlier worth inspection. RMSZ is the root-mean-square of all Z scores of the bond lengths (or angles).

Mol	Chain	Bond lengths		Bond angles	
		RMSZ	$\# Z  > 5$	RMSZ	$\# Z  > 5$
1	A	0.54	0/3347	0.77	4/4514 (0.1%)

There are no bond length outliers.

All (4) bond angle outliers are listed below:

Mol	Chain	Res	Type	Atoms	Z	Observed( $^{\circ}$ )	Ideal( $^{\circ}$ )
1	A	219	ARG	NE-CZ-NH2	-8.55	116.02	120.30
1	A	250	PHE	CB-CG-CD2	-6.83	116.02	120.80
1	A	250	PHE	CB-CG-CD1	6.75	125.52	120.80
1	A	292	ARG	NE-CZ-NH2	-5.63	117.49	120.30

There are no chirality outliers.

There are no planarity outliers.

### 5.2 Too-close contacts [i](#)

In the following table, the Non-H and H(model) columns list the number of non-hydrogen atoms and hydrogen atoms in the chain respectively. The H(added) column lists the number of hydrogen atoms added and optimized by MolProbity. The Clashes column lists the number of clashes within the asymmetric unit, whereas Symm-Clashes lists symmetry-related clashes.

Mol	Chain	Non-H	H(model)	H(added)	Clashes	Symm-Clashes
1	A	3159	3255	3182	15	1
2	A	23	15	0	0	0
3	A	27	22	22	0	0
4	A	1	0	0	0	0
5	A	552	0	0	6	7
All	All	3762	3292	3204	15	7

The all-atom clashscore is defined as the number of clashes found per 1000 atoms (including hydrogen atoms). The all-atom clashscore for this structure is 2.

All (15) close contacts within the same asymmetric unit are listed below, sorted by their clash magnitude.

Atom-1	Atom-2	Interatomic distance (Å)	Clash overlap (Å)
1:A:212[B]:GLU:OE1	5:A:841[B]:HOH:O	2.06	0.73
1:A:123[A]:LEU:HD23	5:A:672:HOH:O	1.96	0.66
1:A:143:THR:O	1:A:149:CYS:HA	2.08	0.54
1:A:130[B]:ILE:HD13	1:A:288:THR:HG22	1.89	0.54
1:A:189[B]:MET:HB2	1:A:198:ILE:HD11	1.92	0.50
1:A:125[A]:ARG:HD2	5:A:530:HOH:O	2.11	0.49
1:A:189[A]:MET:HB2	1:A:198:ILE:HD11	1.96	0.48
1:A:307[B]:LYS:HE3	5:A:934:HOH:O	2.14	0.47
1:A:259:ALA:O	5:A:502:HOH:O	2.21	0.46
1:A:333[A]:PHE:HD1	1:A:342:GLU:OE1	1.98	0.46
1:A:370:ILE:HD12	1:A:370:ILE:C	2.38	0.44
1:A:130[B]:ILE:CD1	1:A:288:THR:HG22	2.50	0.41
1:A:190[A]:GLN:HG3	1:A:191:ASP:N	2.35	0.41
1:A:292:ARG:HB3	5:A:663:HOH:O	2.21	0.41
1:A:287:TYR:CD2	1:A:361:VAL:HB	2.56	0.40

All (7) symmetry-related close contacts are listed below. The label for Atom-2 includes the symmetry operator and encoded unit-cell translations to be applied.

Atom-1	Atom-2	Interatomic distance (Å)	Clash overlap (Å)
5:A:502:HOH:O	5:A:517:HOH:O[2_555]	1.86	0.34
5:A:666:HOH:O	5:A:968:HOH:O[7_554]	1.90	0.30
5:A:550:HOH:O	5:A:934:HOH:O[8_454]	1.97	0.23
5:A:724:HOH:O	5:A:870:HOH:O[7_554]	2.13	0.07
1:A:147[B]:GLU:OE1	5:A:833:HOH:O[8_554]	2.16	0.04
5:A:739:HOH:O	5:A:972:HOH:O[2_555]	2.17	0.03
5:A:517:HOH:O	5:A:886:HOH:O[2_555]	2.18	0.02

## 5.3 Torsion angles

### 5.3.1 Protein backbone

In the following table, the Percentiles column shows the percent Ramachandran outliers of the chain as a percentile score with respect to all X-ray entries followed by that with respect to entries of similar resolution.



The Analysed column shows the number of residues for which the backbone conformation was analysed, and the total number of residues.

Mol	Chain	Analysed	Favoured	Allowed	Outliers	Percentiles	
1	A	418/396 (106%)	408 (98%)	10 (2%)	0	100	100

There are no Ramachandran outliers to report.

### 5.3.2 Protein sidechains ⓘ

In the following table, the Percentiles column shows the percent sidechain outliers of the chain as a percentile score with respect to all X-ray entries followed by that with respect to entries of similar resolution.

The Analysed column shows the number of residues for which the sidechain conformation was analysed, and the total number of residues.

Mol	Chain	Analysed	Rotameric	Outliers	Percentiles	
1	A	353/328 (108%)	346 (98%)	7 (2%)	55	15

All (7) residues with a non-rotameric sidechain are listed below:

Mol	Chain	Res	Type
1	A	130[A]	ILE
1	A	130[B]	ILE
1	A	137	LEU
1	A	190[A]	GLN
1	A	190[B]	GLN
1	A	250	PHE
1	A	334	HIS

Sometimes sidechains can be flipped to improve hydrogen bonding and reduce clashes. There are no such sidechains identified.

### 5.3.3 RNA ⓘ

There are no RNA molecules in this entry.

## 5.4 Non-standard residues in protein, DNA, RNA chains ⓘ

There are no non-standard protein/DNA/RNA residues in this entry.

## 5.5 Carbohydrates [i](#)

There are no monosaccharides in this entry.

## 5.6 Ligand geometry [i](#)

Of 3 ligands modelled in this entry, 1 is monoatomic - leaving 2 for Mogul analysis.

In the following table, the Counts columns list the number of bonds (or angles) for which Mogul statistics could be retrieved, the number of bonds (or angles) that are observed in the model and the number of bonds (or angles) that are defined in the Chemical Component Dictionary. The Link column lists molecule types, if any, to which the group is linked. The Z score for a bond length (or angle) is the number of standard deviations the observed value is removed from the expected value. A bond length (or angle) with  $|Z| > 2$  is considered an outlier worth inspection. RMSZ is the root-mean-square of all Z scores of the bond lengths (or angles).

Mol	Type	Chain	Res	Link	Bond lengths			Bond angles		
					Counts	RMSZ	# Z  > 2	Counts	RMSZ	# Z  > 2
2	J41	A	401[A]	-	21,26,26	6.15	19 (90%)	24,37,37	1.47	3 (12%)
3	SAM	A	402	-	21,29,29	0.83	1 (4%)	18,42,42	1.26	3 (16%)

In the following table, the Chirals column lists the number of chiral outliers, the number of chiral centers analysed, the number of these observed in the model and the number defined in the Chemical Component Dictionary. Similar counts are reported in the Torsion and Rings columns. '-' means no outliers of that kind were identified.

Mol	Type	Chain	Res	Link	Chirals	Torsions	Rings
2	J41	A	401[A]	-	-	2/8/8/8	0/4/4/4
3	SAM	A	402	-	-	0/8/33/33	0/3/3/3

All (20) bond length outliers are listed below:

Mol	Chain	Res	Type	Atoms	Z	Observed(Å)	Ideal(Å)
2	A	401[A]	J41	C21-N22	13.11	1.59	1.33
2	A	401[A]	J41	C01-N22	11.45	1.53	1.35
2	A	401[A]	J41	C05-C04	-10.46	1.29	1.41
2	A	401[A]	J41	C04-N03	-6.88	1.29	1.35
2	A	401[A]	J41	C07-C06	6.84	1.53	1.39
2	A	401[A]	J41	C14-C13	6.62	1.52	1.38
2	A	401[A]	J41	C10-C11	6.35	1.52	1.38
2	A	401[A]	J41	O19-C18	5.90	1.39	1.24
2	A	401[A]	J41	C17-C12	5.70	1.51	1.39
2	A	401[A]	J41	C09-C08	5.42	1.52	1.38
2	A	401[A]	J41	C16-C15	5.07	1.51	1.38

*Continued on next page...*

*Continued from previous page...*

Mol	Chain	Res	Type	Atoms	Z	Observed(Å)	Ideal(Å)
2	A	401[A]	J41	C11-C06	-4.03	1.30	1.39
2	A	401[A]	J41	C08-C07	-3.74	1.31	1.38
2	A	401[A]	J41	C12-C04	3.69	1.53	1.49
2	A	401[A]	J41	C13-C12	-3.24	1.32	1.39
2	A	401[A]	J41	C16-C17	-3.05	1.32	1.38
2	A	401[A]	J41	C05-C06	2.53	1.53	1.49
2	A	401[A]	J41	C14-C15	-2.18	1.32	1.38
3	A	402	SAM	C4-N3	-2.16	1.32	1.35
2	A	401[A]	J41	C09-C10	-2.13	1.32	1.38

All (6) bond angle outliers are listed below:

Mol	Chain	Res	Type	Atoms	Z	Observed(°)	Ideal(°)
2	A	401[A]	J41	C21-N22-C01	-5.59	110.15	117.71
3	A	402	SAM	C5'-SD-CG	-3.34	94.88	103.40
3	A	402	SAM	C4-C5-N7	2.52	112.02	109.40
2	A	401[A]	J41	C05-C04-N03	2.38	111.87	108.31
3	A	402	SAM	C5-C6-N6	2.37	123.95	120.35
2	A	401[A]	J41	C07-C06-C05	-2.10	117.58	120.77

There are no chirality outliers.

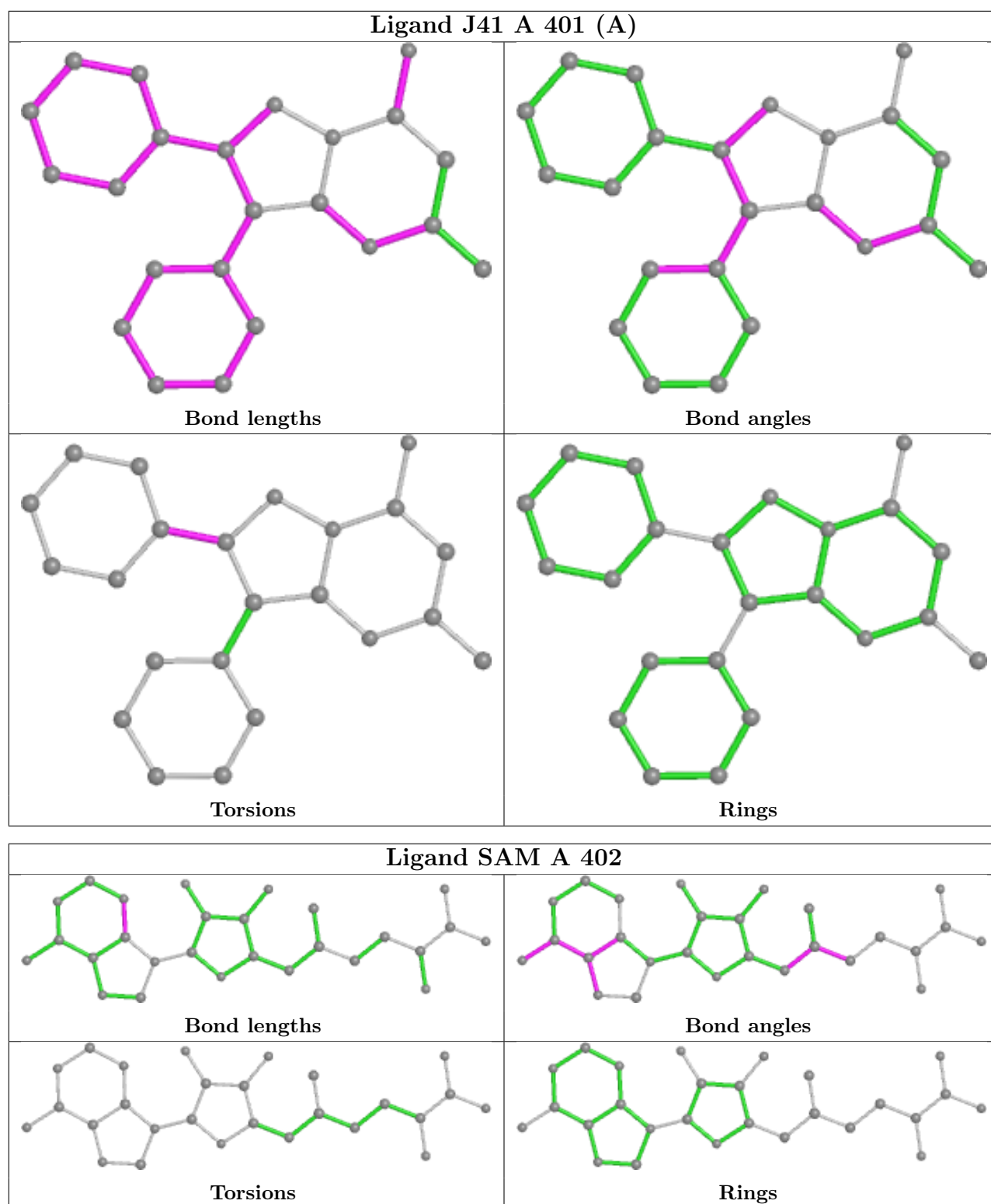
All (2) torsion outliers are listed below:

Mol	Chain	Res	Type	Atoms
2	A	401[A]	J41	N03-C04-C12-C13
2	A	401[A]	J41	N03-C04-C12-C17

There are no ring outliers.

No monomer is involved in short contacts.

The following is a two-dimensional graphical depiction of Mogul quality analysis of bond lengths, bond angles, torsion angles, and ring geometry for all instances of the Ligand of Interest. In addition, ligands with molecular weight > 250 and outliers as shown on the validation Tables will also be included. For torsion angles, if less than 5% of the Mogul distribution of torsion angles is within 10 degrees of the torsion angle in question, then that torsion angle is considered an outlier. Any bond that is central to one or more torsion angles identified as an outlier by Mogul will be highlighted in the graph. For rings, the root-mean-square deviation (RMSD) between the ring in question and similar rings identified by Mogul is calculated over all ring torsion angles. If the average RMSD is greater than 60 degrees and the minimal RMSD between the ring in question and any Mogul-identified rings is also greater than 60 degrees, then that ring is considered an outlier. The outliers are highlighted in purple. The color gray indicates Mogul did not find sufficient equivalents in the CSD to analyse the geometry.



## 5.7 Other polymers ⓘ

There are no such residues in this entry.

## 5.8 Polymer linkage issues ⓘ

There are no chain breaks in this entry.

## 6 Fit of model and data [i](#)

### 6.1 Protein, DNA and RNA chains [i](#)

In the following table, the column labelled ‘#RSRZ> 2’ contains the number (and percentage) of RSRZ outliers, followed by percent RSRZ outliers for the chain as percentile scores relative to all X-ray entries and entries of similar resolution. The OWAB column contains the minimum, median, 95<sup>th</sup> percentile and maximum values of the occupancy-weighted average B-factor per residue. The column labelled ‘Q< 0.9’ lists the number of (and percentage) of residues with an average occupancy less than 0.9.

Mol	Chain	Analysed	<RSRZ>	#RSRZ>2	OWAB(Å <sup>2</sup> )	Q<0.9
1	A	380/396 (95%)	-0.22	10 (2%) 56 54	7, 10, 18, 31	0

All (10) RSRZ outliers are listed below:

Mol	Chain	Res	Type	RSRZ
1	A	394	LYS	3.9
1	A	192	ARG	3.3
1	A	343	ARG	3.0
1	A	351[A]	LYS	2.9
1	A	212[A]	GLU	2.9
1	A	395	TYR	2.7
1	A	190[A]	GLN	2.4
1	A	189[A]	MET	2.3
1	A	339	GLN	2.1
1	A	238	GLU	2.0

### 6.2 Non-standard residues in protein, DNA, RNA chains [i](#)

There are no non-standard protein/DNA/RNA residues in this entry.

### 6.3 Carbohydrates [i](#)

There are no monosaccharides in this entry.

### 6.4 Ligands [i](#)

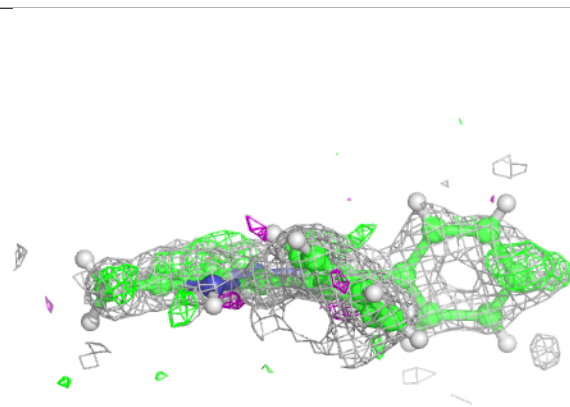
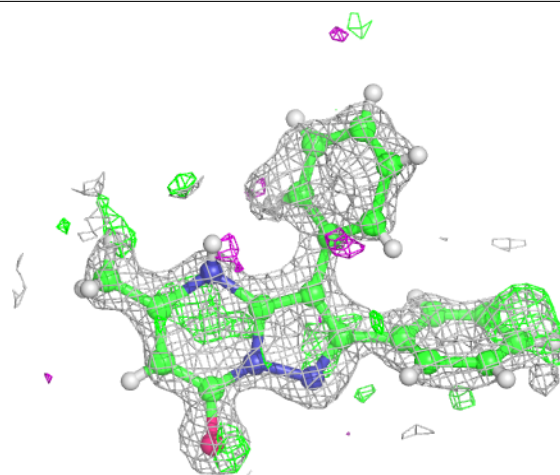
In the following table, the Atoms column lists the number of modelled atoms in the group and the number defined in the chemical component dictionary. The B-factors column lists the minimum, median, 95<sup>th</sup> percentile and maximum values of B factors of atoms in the group. The column labelled ‘Q< 0.9’ lists the number of atoms with occupancy less than 0.9.

Mol	Type	Chain	Res	Atoms	RSCC	RSR	B-factors( $\text{\AA}^2$ )	Q<0.9
2	J41	A	401[A]	23/23	0.82	0.19	14,17,20,20	38
3	SAM	A	402	27/27	0.98	0.07	6,8,12,13	0
4	CL	A	403	1/1	1.00	0.06	10,10,10,10	0

The following is a graphical depiction of the model fit to experimental electron density of all instances of the Ligand of Interest. In addition, ligands with molecular weight > 250 and outliers as shown on the geometry validation Tables will also be included. Each fit is shown from different orientation to approximate a three-dimensional view.

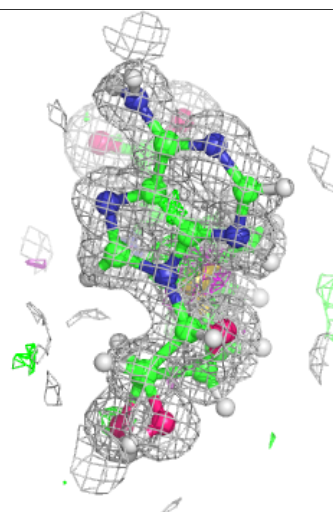
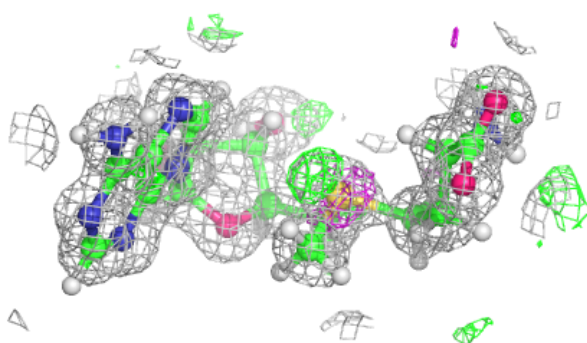
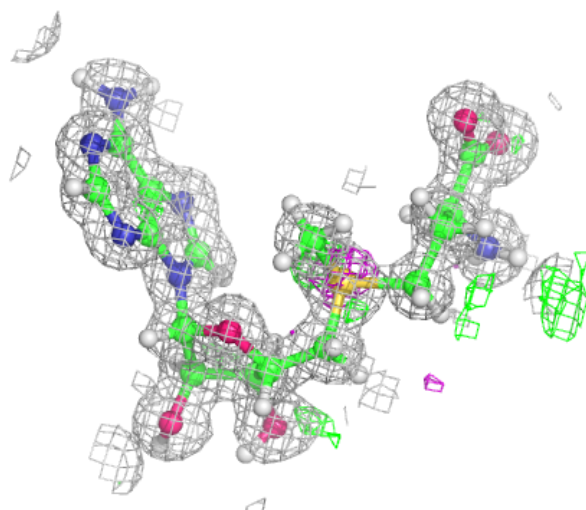
**Electron density around J41 A 401 (A):**

2mF<sub>o</sub>-DF<sub>c</sub> (at 0.7 rmsd) in gray  
mF<sub>o</sub>-DF<sub>c</sub> (at 3 rmsd) in purple (negative)  
and green (positive)



**Electron density around SAM A 402:**

$2mF_o-DF_c$  (at 0.7 rmsd) in gray  
 $mF_o-DF_c$  (at 3 rmsd) in purple (negative)  
and green (positive)



## 6.5 Other polymers [i](#)

There are no such residues in this entry.