



Full wwPDB X-ray Structure Validation Report ⓘ

Oct 17, 2021 – 02:54 AM EDT

PDB ID : 1KEC
Title : PENICILLIN ACYLASE MUTANT WITH PHENYL PROPRIONIC ACID
Authors : Hensgens, C.M.H.; Keizer, E.; Snijder, H.J.; Dijkstra, B.W.
Deposited on : 2001-11-15
Resolution : 2.30 Å(reported)

This is a Full wwPDB X-ray Structure Validation Report for a publicly released PDB entry.

We welcome your comments at validation@mail.wwpdb.org

A user guide is available at

<https://www.wwpdb.org/validation/2017/XrayValidationReportHelp>

with specific help available everywhere you see the ⓘ symbol.

The following versions of software and data (see [references ⓘ](#)) were used in the production of this report:

MolProbity : 4.02b-467
Mogul : 1.8.5 (274361), CSD as541be (2020)
Xtriage (Phenix) : **NOT EXECUTED**
EDS : **NOT EXECUTED**
Percentile statistics : 20191225.v01 (using entries in the PDB archive December 25th 2019)
Ideal geometry (proteins) : Engh & Huber (2001)
Ideal geometry (DNA, RNA) : Parkinson et al. (1996)
Validation Pipeline (wwPDB-VP) : 2.23.2

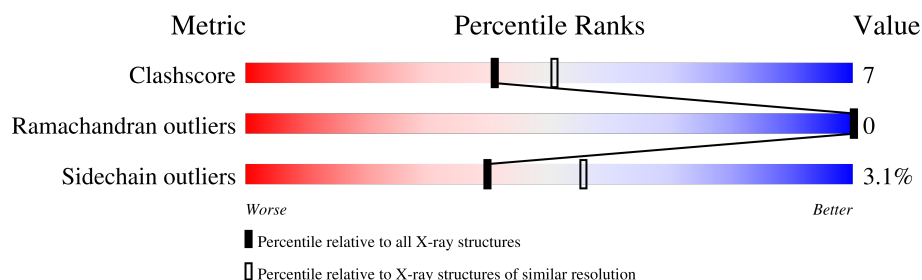
1 Overall quality at a glance

The following experimental techniques were used to determine the structure:

X-RAY DIFFRACTION

The reported resolution of this entry is 2.30 Å.



Percentile scores (ranging between 0-100) for global validation metrics of the entry are shown in the following graphic. The table shows the number of entries on which the scores are based.



Metric	Whole archive (#Entries)	Similar resolution (#Entries, resolution range(Å))
Clashscore	141614	5643 (2.30-2.30)
Ramachandran outliers	138981	5575 (2.30-2.30)
Sidechain outliers	138945	5575 (2.30-2.30)

The table below summarises the geometric issues observed across the polymeric chains and their fit to the electron density. The red, orange, yellow and green segments of the lower bar indicate the fraction of residues that contain outliers for ≥ 3 , 2, 1 and 0 types of geometric quality criteria respectively. A grey segment represents the fraction of residues that are not modelled. The numeric value for each fraction is indicated below the corresponding segment, with a dot representing fractions $\leq 5\%$.

Note EDS was not executed.

Mol	Chain	Length	Quality of chain
1	A	209	 87% 11% .
2	B	557	 83% 15% .

2 Entry composition

There are 5 unique types of molecules in this entry. The entry contains 6561 atoms, of which 0 are hydrogens and 0 are deuteriums.

In the tables below, the ZeroOcc column contains the number of atoms modelled with zero occupancy, the AltConf column contains the number of residues with at least one atom in alternate conformation and the Trace column contains the number of residues modelled with at most 2 atoms.

- Molecule 1 is a protein called PENICILLIN ACYLASE ALPHA SUBUNIT.

Mol	Chain	Residues	Atoms					ZeroOcc	AltConf	Trace
1	A	206	Total	C	N	O	S	0	0	0
			1658	1058	278	314	8			

There is a discrepancy between the modelled and reference sequences:

Chain	Residue	Modelled	Actual	Comment	Reference
A	146	TYR	PHE	engineered mutation	UNP P06875

- Molecule 2 is a protein called PENICILLIN ACYLASE BETA SUBUNIT.

Mol	Chain	Residues	Atoms					ZeroOcc	AltConf	Trace
2	B	557	Total	C	N	O	S	0	0	0
			4416	2806	766	834	10			

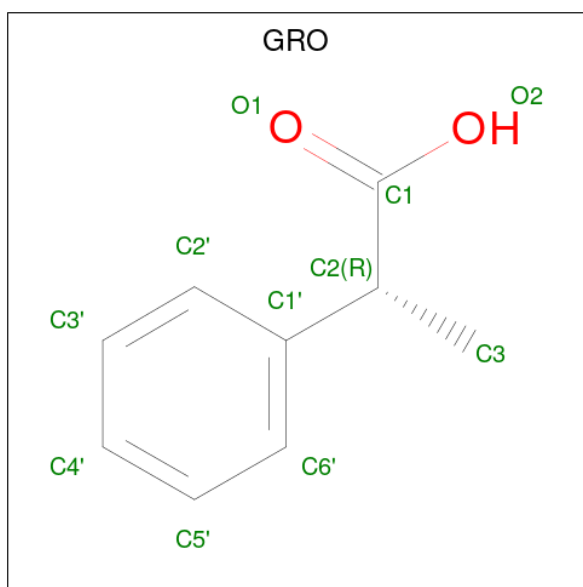
There is a discrepancy between the modelled and reference sequences:

Chain	Residue	Modelled	Actual	Comment	Reference
B	148	LEU	VAL	engineered mutation	UNP P06875

- Molecule 3 is CALCIUM ION (three-letter code: CA) (formula: Ca).

Mol	Chain	Residues	Atoms		ZeroOcc	AltConf
3	B	1	Total	Ca	0	0
			1	1		

- Molecule 4 is R-2-PHENYL-PROPRIONIC ACID (three-letter code: GRO) (formula: C₉H₁₀O₂).



Mol	Chain	Residues	Atoms			ZeroOcc	AltConf
4	B	1	Total	C	O	0	0
			11	9	2		

- Molecule 5 is water.


Mol	Chain	Residues	Atoms		ZeroOcc	AltConf
5	A	134	Total	O	0	0
			134	134		
5	B	341	Total	O	0	0
			341	341		

3 Residue-property plots [i](#)

These plots are drawn for all protein, RNA, DNA and oligosaccharide chains in the entry. The first graphic for a chain summarises the proportions of the various outlier classes displayed in the second graphic. The second graphic shows the sequence view annotated by issues in geometry. Residues are color-coded according to the number of geometric quality criteria for which they contain at least one outlier: green = 0, yellow = 1, orange = 2 and red = 3 or more. Stretches of 2 or more consecutive residues without any outlier are shown as a green connector. Residues present in the sample, but not in the model, are shown in grey.


Note EDS was not executed.

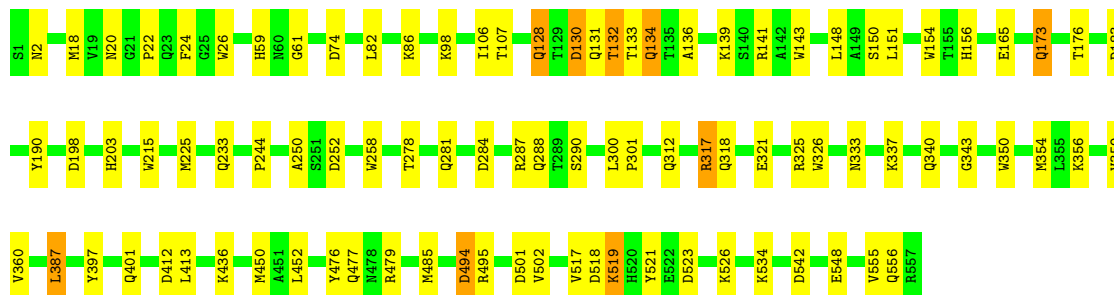
• Molecule 1: PENICILLIN ACYLASE ALPHA SUBUNIT

Chain A:  87% 11%



• Molecule 2: PENICILLIN ACYLASE BETA SUBUNIT

Chain B:  83% 15%



4 Data and refinement statistics

Xtriage (Phenix) and EDS were not executed - this section is therefore incomplete.

Property	Value	Source
Space group	P 1	Depositor
Cell constants a, b, c, α , β , γ	50.78Å 64.23Å 64.54Å 72.60° 73.86° 73.56°	Depositor
Resolution (Å)	19.14 – 2.30	Depositor
% Data completeness (in resolution range)	100.0 (19.14-2.30)	Depositor
R_{merge}	(Not available)	Depositor
R_{sym}	0.08	Depositor
Refinement program	REFMAC	Depositor
R, R_{free}	0.151 , 0.206	Depositor
Estimated twinning fraction	No twinning to report.	Xtriage
Total number of atoms	6561	wwPDB-VP
Average B, all atoms (Å ²)	15.0	wwPDB-VP

5 Model quality

5.1 Standard geometry

Bond lengths and bond angles in the following residue types are not validated in this section: CA, GRO

The Z score for a bond length (or angle) is the number of standard deviations the observed value is removed from the expected value. A bond length (or angle) with $|Z| > 5$ is considered an outlier worth inspection. RMSZ is the root-mean-square of all Z scores of the bond lengths (or angles).

Mol	Chain	Bond lengths		Bond angles	
		RMSZ	$\# Z > 5$	RMSZ	$\# Z > 5$
1	A	0.50	0/1700	0.75	3/2307 (0.1%)
2	B	0.51	1/4542 (0.0%)	0.78	11/6193 (0.2%)
All	All	0.51	1/6242 (0.0%)	0.77	14/8500 (0.2%)

All (1) bond length outliers are listed below:

Mol	Chain	Res	Type	Atoms	Z	Observed(Å)	Ideal(Å)
2	B	165	GLU	CD-OE2	5.95	1.32	1.25

All (14) bond angle outliers are listed below:

Mol	Chain	Res	Type	Atoms	Z	Observed(°)	Ideal(°)
2	B	518	ASP	CB-CG-OD2	6.69	124.32	118.30
2	B	284	ASP	CB-CG-OD2	6.68	124.31	118.30
2	B	542	ASP	CB-CG-OD2	6.36	124.02	118.30
2	B	130	ASP	CB-CG-OD2	6.29	123.96	118.30
1	A	23	ASP	CB-CG-OD2	6.10	123.79	118.30
2	B	501	ASP	CB-CG-OD2	5.89	123.60	118.30
2	B	494	ASP	CB-CG-OD2	5.88	123.59	118.30
2	B	74	ASP	CB-CG-OD2	5.86	123.57	118.30
2	B	523	ASP	CB-CG-OD2	5.50	123.25	118.30
2	B	198	ASP	CB-CG-OD2	5.45	123.21	118.30
2	B	183	ASP	CB-CG-OD2	5.40	123.16	118.30
1	A	38	ASP	CB-CG-OD2	5.39	123.15	118.30
1	A	148	ASP	CB-CG-OD2	5.27	123.05	118.30
2	B	412	ASP	CB-CG-OD2	5.11	122.90	118.30

There are no chirality outliers.

There are no planarity outliers.

5.2 Too-close contacts ⓘ

In the following table, the Non-H and H(model) columns list the number of non-hydrogen atoms and hydrogen atoms in the chain respectively. The H(added) column lists the number of hydrogen atoms added and optimized by MolProbity. The Clashes column lists the number of clashes within the asymmetric unit, whereas Symm-Clashes lists symmetry-related clashes.

Mol	Chain	Non-H	H(model)	H(added)	Clashes	Symm-Clashes
1	A	1658	0	1604	23	0
2	B	4416	0	4244	75	0
3	B	1	0	0	0	0
4	B	11	0	9	1	0
5	A	134	0	0	4	0
5	B	341	0	0	9	0
All	All	6561	0	5857	85	0

The all-atom clashscore is defined as the number of clashes found per 1000 atoms (including hydrogen atoms). The all-atom clashscore for this structure is 7.

All (85) close contacts within the same asymmetric unit are listed below, sorted by their clash magnitude.

Atom-1	Atom-2	Interatomic distance (Å)	Clash overlap (Å)
2:B:436:LYS:HE3	5:B:1010:HOH:O	1.54	1.06
2:B:132:THR:HG22	2:B:134:GLN:H	1.34	0.90
1:A:71:ARG:HD3	5:A:324:HOH:O	1.70	0.89
2:B:321:GLU:HG3	5:B:1042:HOH:O	1.75	0.87
2:B:287:ARG:NH1	2:B:288:GLN:OE1	2.09	0.85
2:B:98:LYS:HE3	5:B:1005:HOH:O	1.81	0.81
2:B:59:HIS:HD2	2:B:61:GLY:H	1.28	0.78
2:B:519:LYS:HB2	2:B:519:LYS:NZ	1.97	0.78
1:A:181:LEU:HD21	1:A:201:PHE:HB2	1.66	0.78
2:B:132:THR:CG2	2:B:134:GLN:HG2	2.14	0.77
2:B:98:LYS:CE	5:B:1005:HOH:O	2.35	0.74
2:B:132:THR:HG21	2:B:134:GLN:HG2	1.72	0.71
1:A:81:GLN:NE2	2:B:148:LEU:H	1.93	0.66
2:B:132:THR:HG22	2:B:134:GLN:N	2.11	0.64
1:A:71:ARG:CZ	2:B:128:GLN:HG3	2.34	0.58
2:B:278:THR:H	2:B:281:GLN:HE21	1.51	0.57
2:B:59:HIS:HD2	2:B:61:GLY:N	2.00	0.57
2:B:519:LYS:HB2	2:B:519:LYS:HZ2	1.66	0.57
2:B:156:HIS:HD2	5:B:741:HOH:O	1.87	0.56
2:B:250:ALA:HB2	2:B:258:TRP:CE3	2.40	0.56
2:B:387:LEU:HD22	2:B:476:TYR:CE2	2.42	0.55

Continued on next page...

Continued from previous page...

Atom-1	Atom-2	Interatomic distance (Å)	Clash overlap (Å)
2:B:519:LYS:HB2	2:B:519:LYS:HZ3	1.70	0.55
2:B:18:MET:O	2:B:485:MET:HA	2.07	0.55
1:A:103:TRP:O	1:A:107:VAL:HG23	2.07	0.54
2:B:477:GLN:NE2	2:B:479:ARG:HH11	2.04	0.54
1:A:81:GLN:HE22	2:B:148:LEU:H	1.53	0.54
1:A:71:ARG:NH1	2:B:128:GLN:HG3	2.22	0.54
1:A:194:GLU:OE2	2:B:233:GLN:HG3	2.07	0.54
2:B:477:GLN:HE21	2:B:479:ARG:HD3	1.73	0.54
2:B:176:THR:O	2:B:176:THR:HG23	2.08	0.53
1:A:181:LEU:CD2	1:A:201:PHE:HB2	2.38	0.53
2:B:132:THR:HG22	2:B:134:GLN:HG2	1.88	0.53
1:A:112:GLU:H	1:A:112:GLU:CD	2.11	0.53
2:B:359:VAL:HG22	2:B:413:LEU:HD13	1.91	0.53
2:B:132:THR:HG23	2:B:134:GLN:NE2	2.24	0.52
2:B:132:THR:CG2	2:B:134:GLN:HE21	2.22	0.51
1:A:199:LEU:HG	2:B:225:MET:HE1	1.92	0.51
2:B:132:THR:HG23	2:B:134:GLN:HE21	1.75	0.50
2:B:321:GLU:CG	5:B:1042:HOH:O	2.45	0.49
1:A:150:THR:HA	2:B:252:ASP:OD1	2.13	0.49
2:B:494:ASP:OD1	2:B:495:ARG:HG2	2.12	0.49
2:B:325:ARG:HD3	5:B:983:HOH:O	2.11	0.49
2:B:132:THR:CG2	2:B:133:THR:N	2.75	0.48
2:B:22:PRO:HB2	2:B:24:PHE:CE2	2.49	0.48
2:B:519:LYS:NZ	2:B:519:LYS:CB	2.70	0.48
2:B:300:LEU:HB3	2:B:301:PRO:HD3	1.95	0.48
1:A:207:GLN:HA	2:B:215:TRP:CZ2	2.49	0.47
2:B:477:GLN:HE22	2:B:479:ARG:HH11	1.60	0.47
2:B:333:ASN:ND2	2:B:340:GLN:HG2	2.30	0.47
1:A:72:ASN:HD21	2:B:139:LYS:NZ	2.14	0.46
2:B:387:LEU:HD21	2:B:450:MET:SD	2.55	0.46
2:B:132:THR:CG2	2:B:134:GLN:NE2	2.78	0.46
1:A:13:GLU:HB2	5:A:241:HOH:O	2.15	0.46
2:B:502:VAL:O	2:B:502:VAL:HG13	2.16	0.46
2:B:312:GLN:O	2:B:318:GLN:NE2	2.48	0.45
2:B:397:TYR:O	2:B:401:GLN:HG2	2.17	0.45
2:B:387:LEU:HD12	2:B:387:LEU:HA	1.83	0.45
1:A:5:SER:HB2	2:B:555:VAL:O	2.17	0.45
2:B:132:THR:CG2	2:B:134:GLN:H	2.18	0.45
1:A:66:ASP:HB3	2:B:106:ILE:HD12	1.99	0.45
2:B:321:GLU:CD	5:B:1042:HOH:O	2.56	0.45
2:B:82:LEU:HD11	2:B:136:ALA:HB2	1.98	0.44

Continued on next page...

Continued from previous page...

Atom-1	Atom-2	Interatomic distance (Å)	Clash overlap (Å)
2:B:141:ARG:HD3	2:B:143:TRP:CH2	2.52	0.44
2:B:150:SER:HB3	2:B:173:GLN:OE1	2.16	0.44
1:A:56:GLU:HG2	2:B:107:THR:HB	1.99	0.44
2:B:24:PHE:CD1	4:B:601:GRO:HC31	2.52	0.44
2:B:326:TRP:CZ3	2:B:343:GLY:HA3	2.53	0.43
2:B:290:SER:HB3	2:B:479:ARG:HB3	2.01	0.43
2:B:148:LEU:N	2:B:148:LEU:CD2	2.82	0.43
1:A:181:LEU:HD21	1:A:201:PHE:CB	2.44	0.42
2:B:317:ARG:HG2	2:B:318:GLN:NE2	2.34	0.42
2:B:517:VAL:HG13	2:B:521:TYR:CB	2.49	0.42
1:A:170:GLN:HG2	5:A:320:HOH:O	2.19	0.42
2:B:151:LEU:HD23	2:B:151:LEU:C	2.40	0.42
2:B:356:LYS:HA	2:B:360:VAL:HB	2.02	0.42
2:B:519:LYS:HE2	5:B:891:HOH:O	2.20	0.42
1:A:71:ARG:CZ	2:B:128:GLN:CG	2.99	0.41
1:A:71:ARG:NH2	5:A:272:HOH:O	2.49	0.41
2:B:526:LYS:HA	2:B:526:LYS:HE2	2.02	0.41
2:B:26:TRP:CE2	2:B:452:LEU:HD11	2.56	0.41
2:B:190:TYR:OH	2:B:244:PRO:HB3	2.20	0.41
2:B:350:TRP:CZ2	2:B:354:MET:HG3	2.56	0.41
2:B:519:LYS:HZ3	2:B:519:LYS:CB	2.33	0.41
1:A:186:ALA:O	1:A:188:THR:HG23	2.21	0.41
2:B:203:HIS:CD2	2:B:203:HIS:C	2.95	0.41

There are no symmetry-related clashes.

5.3 Torsion angles [i](#)

5.3.1 Protein backbone [i](#)

In the following table, the Percentiles column shows the percent Ramachandran outliers of the chain as a percentile score with respect to all X-ray entries followed by that with respect to entries of similar resolution.

The Analysed column shows the number of residues for which the backbone conformation was analysed, and the total number of residues.

Mol	Chain	Analysed	Favoured	Allowed	Outliers	Percentiles	
1	A	204/209 (98%)	197 (97%)	7 (3%)	0	100	100
2	B	555/557 (100%)	543 (98%)	12 (2%)	0	100	100

Continued on next page...

Continued from previous page...

Mol	Chain	Analysed	Favoured	Allowed	Outliers	Percentiles	
All	All	759/766 (99%)	740 (98%)	19 (2%)	0	100	100

There are no Ramachandran outliers to report.

5.3.2 Protein sidechains ⓘ

In the following table, the Percentiles column shows the percent sidechain outliers of the chain as a percentile score with respect to all X-ray entries followed by that with respect to entries of similar resolution.

The Analysed column shows the number of residues for which the sidechain conformation was analysed, and the total number of residues.

Mol	Chain	Analysed	Rotameric	Outliers	Percentiles	
1	A	178/180 (99%)	175 (98%)	3 (2%)	60	76
2	B	460/460 (100%)	443 (96%)	17 (4%)	34	48
All	All	638/640 (100%)	618 (97%)	20 (3%)	40	55

All (20) residues with a non-rotameric sidechain are listed below:

Mol	Chain	Res	Type
1	A	31	TYR
1	A	73	TYR
1	A	112	GLU
2	B	2	ASN
2	B	20	ASN
2	B	86	LYS
2	B	128	GLN
2	B	130	ASP
2	B	131	GLN
2	B	132	THR
2	B	134	GLN
2	B	154	TRP
2	B	173	GLN
2	B	317	ARG
2	B	337	LYS
2	B	387	LEU
2	B	519	LYS
2	B	534	LYS
2	B	548	GLU
2	B	556	GLN

Sometimes sidechains can be flipped to improve hydrogen bonding and reduce clashes. All (20) such sidechains are listed below:

Mol	Chain	Res	Type
1	A	72	ASN
1	A	81	GLN
1	A	108	ASN
1	A	203	GLN
2	B	2	ASN
2	B	59	HIS
2	B	110	ASN
2	B	134	GLN
2	B	156	HIS
2	B	164	GLN
2	B	233	GLN
2	B	273	GLN
2	B	281	GLN
2	B	304	GLN
2	B	333	ASN
2	B	348	ASN
2	B	419	GLN
2	B	477	GLN
2	B	546	HIS
2	B	556	GLN

5.3.3 RNA [i](#)

There are no RNA molecules in this entry.

5.4 Non-standard residues in protein, DNA, RNA chains [i](#)

There are no non-standard protein/DNA/RNA residues in this entry.

5.5 Carbohydrates [i](#)

There are no monosaccharides in this entry.

5.6 Ligand geometry [i](#)

Of 2 ligands modelled in this entry, 1 is monoatomic - leaving 1 for Mogul analysis.

In the following table, the Counts columns list the number of bonds (or angles) for which Mogul statistics could be retrieved, the number of bonds (or angles) that are observed in the model and

the number of bonds (or angles) that are defined in the Chemical Component Dictionary. The Link column lists molecule types, if any, to which the group is linked. The Z score for a bond length (or angle) is the number of standard deviations the observed value is removed from the expected value. A bond length (or angle) with $|Z| > 2$ is considered an outlier worth inspection. RMSZ is the root-mean-square of all Z scores of the bond lengths (or angles).

Mol	Type	Chain	Res	Link	Bond lengths			Bond angles		
					Counts	RMSZ	$\# Z > 2$	Counts	RMSZ	$\# Z > 2$
4	GRO	B	601	-	8,11,11	0.93	0	10,14,14	0.71	0

In the following table, the Chirals column lists the number of chiral outliers, the number of chiral centers analysed, the number of these observed in the model and the number defined in the Chemical Component Dictionary. Similar counts are reported in the Torsion and Rings columns. '-' means no outliers of that kind were identified.

Mol	Type	Chain	Res	Link	Chirals	Torsions	Rings
4	GRO	B	601	-	-	1/4/8/8	0/1/1/1

There are no bond length outliers.

There are no bond angle outliers.

There are no chirality outliers.

All (1) torsion outliers are listed below:

Mol	Chain	Res	Type	Atoms
4	B	601	GRO	C6'-C1'-C2-C3

There are no ring outliers.

1 monomer is involved in 1 short contact:

Mol	Chain	Res	Type	Clashes	Symm-Clashes
4	B	601	GRO	1	0

5.7 Other polymers [i](#)

There are no such residues in this entry.

5.8 Polymer linkage issues [i](#)

There are no chain breaks in this entry.

6 Fit of model and data

6.1 Protein, DNA and RNA chains

EDS was not executed - this section is therefore empty.

6.2 Non-standard residues in protein, DNA, RNA chains

EDS was not executed - this section is therefore empty.

6.3 Carbohydrates

EDS was not executed - this section is therefore empty.

6.4 Ligands

EDS was not executed - this section is therefore empty.

6.5 Other polymers

EDS was not executed - this section is therefore empty.