



# Full wwPDB X-ray Structure Validation Report ⓘ

May 17, 2020 – 04:11 pm BST

PDB ID : 4KEM  
Title : Crystal structure of a tartrate dehydratase from azospirillum, target efi-502395, with bound mg and a putative acrylate ion, ordered active site  
Authors : Vetting, M.W.; Wichelecki, D.; Morisco, L.L.; Wasserman, S.R.; Sojitra, S.; Stead, M.; Hillerich, B.; Love, J.; Seidel, R.D.; Imker, H.J.; Gerlt, J.A.; Almo, S.C.; Enzyme Function Initiative (EFI)  
Deposited on : 2013-04-25  
Resolution : 1.30 Å(reported)

This is a Full wwPDB X-ray Structure Validation Report for a publicly released PDB entry.

We welcome your comments at [validation@mail.wwpdb.org](mailto:validation@mail.wwpdb.org)

A user guide is available at

<https://www.wwpdb.org/validation/2017/XrayValidationReportHelp>

with specific help available everywhere you see the ⓘ symbol.

---

The following versions of software and data (see [references ⓘ](#)) were used in the production of this report:

MolProbity : 4.02b-467  
Mogul : 1.8.5 (274361), CSD as541be (2020)  
Xtriage (Phenix) : 1.13  
EDS : 2.11  
Percentile statistics : 20191225.v01 (using entries in the PDB archive December 25th 2019)  
Refmac : 5.8.0158  
CCP4 : 7.0.044 (Gargrove)  
Ideal geometry (proteins) : Engh & Huber (2001)  
Ideal geometry (DNA, RNA) : Parkinson et al. (1996)  
Validation Pipeline (wwPDB-VP) : 2.11



Mol	Type	Chain	Res	Chirality	Geometry	Clashes	Electron density
4	AKR	A	405	-	-	X	-
4	AKR	B	405	-	-	X	-

## 2 Entry composition

There are 5 unique types of molecules in this entry. The entry contains 13252 atoms, of which 5942 are hydrogens and 0 are deuteriums.

In the tables below, the ZeroOcc column contains the number of atoms modelled with zero occupancy, the AltConf column contains the number of residues with at least one atom in alternate conformation and the Trace column contains the number of residues modelled with at most 2 atoms.

- Molecule 1 is a protein called Mandelate racemase/muconate lactonizing enzyme.

Mol	Chain	Residues	Atoms						ZeroOcc	AltConf	Trace
1	A	390	Total	C	H	N	O	S	0	3	0
			6020	1918	2979	540	567	16			
1	B	390	Total	C	H	N	O	S	0	2	0
			5992	1911	2963	536	566	16			

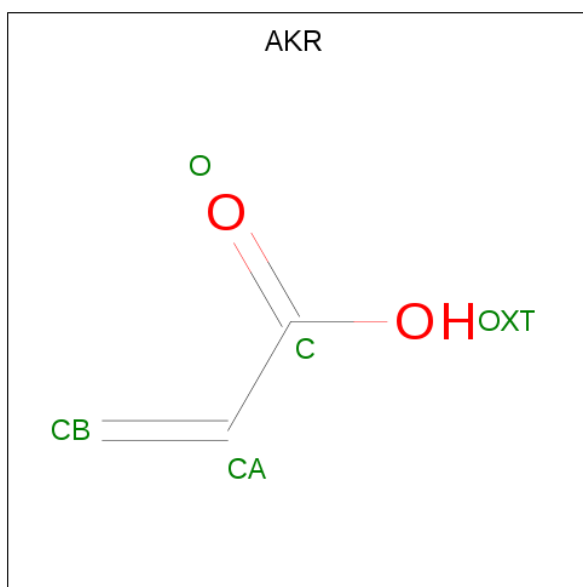
- Molecule 2 is MAGNESIUM ION (three-letter code: MG) (formula: Mg).

Mol	Chain	Residues	Atoms		ZeroOcc	AltConf
2	B	1	Total	Mg	0	0
			1	1		
2	A	1	Total	Mg	0	0
			1	1		

- Molecule 3 is CHLORIDE ION (three-letter code: CL) (formula: Cl).

Mol	Chain	Residues	Atoms		ZeroOcc	AltConf
3	B	3	Total	Cl	0	0
			3	3		
3	A	3	Total	Cl	0	0
			3	3		

- Molecule 4 is ACRYLIC ACID (three-letter code: AKR) (formula: C<sub>3</sub>H<sub>4</sub>O<sub>2</sub>).



Mol	Chain	Residues	Atoms			ZeroOcc	AltConf
4	A	1	Total	C	O	0	0
			5	3	2		
4	B	1	Total	C	O	0	0
			5	3	2		

- Molecule 5 is water.

Mol	Chain	Residues	Atoms		ZeroOcc	AltConf
5	A	619	Total	O	0	1
			620	620		
5	B	602	Total	O	0	0
			602	602		

### 3 Residue-property plots [i](#)

These plots are drawn for all protein, RNA and DNA chains in the entry. The first graphic for a chain summarises the proportions of the various outlier classes displayed in the second graphic. The second graphic shows the sequence view annotated by issues in geometry and electron density. Residues are color-coded according to the number of geometric quality criteria for which they contain at least one outlier: green = 0, yellow = 1, orange = 2 and red = 3 or more. A red dot above a residue indicates a poor fit to the electron density ( $RSRZ > 2$ ). Stretches of 2 or more consecutive residues without any outlier are shown as a green connector. Residues present in the sample, but not in the model, are shown in grey.

- Molecule 1: Mandelate racemase/muconate lactonizing enzyme



- Molecule 1: Mandelate racemase/muconate lactonizing enzyme



## 4 Data and refinement statistics

Property	Value	Source
Space group	P 1 21 1	Depositor
Cell constants a, b, c, $\alpha$ , $\beta$ , $\gamma$	50.17Å 82.92Å 103.27Å 90.00° 100.86° 90.00°	Depositor
Resolution (Å)	21.40 – 1.30 21.40 – 1.30	Depositor EDS
% Data completeness (in resolution range)	93.1 (21.40-1.30) 93.1 (21.40-1.30)	Depositor EDS
$R_{merge}$	0.11	Depositor
$R_{sym}$	0.11	Depositor
$\langle I/\sigma(I) \rangle$ <sup>1</sup>	2.29 (at 1.30Å)	Xtriage
Refinement program	PHENIX 1.8.1_1168	Depositor
R, $R_{free}$	0.164 , 0.186 0.166 , 0.186	Depositor DCC
$R_{free}$ test set	9474 reflections (5.00%)	wwPDB-VP
Wilson B-factor (Å <sup>2</sup> )	7.6	Xtriage
Anisotropy	0.870	Xtriage
Bulk solvent $k_{sol}$ (e/Å <sup>3</sup> ), $B_{sol}$ (Å <sup>2</sup> )	0.42 , 49.0	EDS
L-test for twinning <sup>2</sup>	$\langle  L  \rangle = 0.49$ , $\langle L^2 \rangle = 0.33$	Xtriage
Estimated twinning fraction	No twinning to report.	Xtriage
$F_o, F_c$ correlation	0.97	EDS
Total number of atoms	13252	wwPDB-VP
Average B, all atoms (Å <sup>2</sup> )	13.0	wwPDB-VP

Xtriage's analysis on translational NCS is as follows: *The largest off-origin peak in the Patterson function is 16.73% of the height of the origin peak. No significant pseudotranslation is detected.*

<sup>1</sup>Intensities estimated from amplitudes.

<sup>2</sup>Theoretical values of  $\langle |L| \rangle$ ,  $\langle L^2 \rangle$  for acentric reflections are 0.5, 0.333 respectively for untwinned datasets, and 0.375, 0.2 for perfectly twinned datasets.

## 5 Model quality

### 5.1 Standard geometry

Bond lengths and bond angles in the following residue types are not validated in this section: AKR, MG, CL

The Z score for a bond length (or angle) is the number of standard deviations the observed value is removed from the expected value. A bond length (or angle) with  $|Z| > 5$  is considered an outlier worth inspection. RMSZ is the root-mean-square of all Z scores of the bond lengths (or angles).

Mol	Chain	Bond lengths		Bond angles	
		RMSZ	# Z  >5	RMSZ	# Z  >5
1	A	0.41	0/3116	0.62	0/4215
1	B	0.42	0/3105	0.62	0/4200
All	All	0.41	0/6221	0.62	0/8415

There are no bond length outliers.

There are no bond angle outliers.

There are no chirality outliers.

There are no planarity outliers.

### 5.2 Too-close contacts

In the following table, the Non-H and H(model) columns list the number of non-hydrogen atoms and hydrogen atoms in the chain respectively. The H(added) column lists the number of hydrogen atoms added and optimized by MolProbity. The Clashes column lists the number of clashes within the asymmetric unit, whereas Symm-Clashes lists symmetry related clashes.

Mol	Chain	Non-H	H(model)	H(added)	Clashes	Symm-Clashes
1	A	3041	2979	2964	15	0
1	B	3029	2963	2950	17	0
2	A	1	0	0	0	0
2	B	1	0	0	0	0
3	A	3	0	0	2	0
3	B	3	0	0	1	0
4	A	5	0	2	4	0
4	B	5	0	2	5	0
5	A	620	0	0	6	5
5	B	602	0	0	9	5
All	All	7310	5942	5918	33	7



The all-atom clashscore is defined as the number of clashes found per 1000 atoms (including hydrogen atoms). The all-atom clashscore for this structure is 3.

All (33) close contacts within the same asymmetric unit are listed below, sorted by their clash magnitude.

Atom-1	Atom-2	Interatomic distance (Å)	Clash overlap (Å)
1:A:194:ARG:NH2	5:A:995:HOH:O	2.08	0.87
1:B:155:TYR:OH	5:B:925:HOH:O	1.95	0.83
1:A:201:GLU:OE2	5:A:810:HOH:O	1.99	0.81
1:A:214:ASN:HD21	4:A:405:AKR:HB3	1.50	0.77
1:B:214:ASN:HD21	4:B:405:AKR:HB3	1.53	0.74
1:A:64:GLU:OE2	5:A:1031:HOH:O	2.11	0.69
1:A:227:GLU:OE1	5:A:1047:HOH:O	2.15	0.64
1:B:258:ARG:NH1	5:B:894:HOH:O	2.33	0.61
1:B:220:ASP:OD2	5:B:888:HOH:O	2.17	0.60
1:B:170:ARG:NH2	5:B:1001:HOH:O	2.36	0.58
1:A:214:ASN:ND2	4:A:405:AKR:HB3	2.18	0.57
1:B:93:THR:O	1:B:97:THR:HG23	2.04	0.57
1:B:98:ASN:ND2	5:B:887:HOH:O	2.35	0.56
1:B:214:ASN:ND2	4:B:405:AKR:HB3	2.21	0.54
1:A:214:ASN:HD21	4:A:405:AKR:CB	2.20	0.54
1:B:64:GLU:OE1	5:B:827:HOH:O	2.19	0.54
1:A:264:GLU:OE2	4:A:405:AKR:CB	2.57	0.52
1:A:323:GLY:HA2	1:A:340:GLU:O	2.09	0.52
1:B:19:ASN:HB2	3:B:402:CL:CL	2.47	0.51
4:B:405:AKR:HA1	5:B:534:HOH:O	2.10	0.50
1:B:323:GLY:HA2	1:B:340:GLU:O	2.12	0.49
1:B:264:GLU:OE2	4:B:405:AKR:CB	2.61	0.49
1:A:19:ASN:HB2	3:A:402:CL:CL	2.50	0.48
1:B:43:LYS:HB3	1:B:44:PRO:HD2	1.95	0.48
1:B:139:ARG:NH2	5:B:1004:HOH:O	2.39	0.48
1:A:28:THR:O	3:A:404:CL:CL	2.71	0.46
1:B:214:ASN:HD21	4:B:405:AKR:CB	2.26	0.46
1:A:248:LEU:C	1:A:248:LEU:HD23	2.36	0.46
1:B:254:LYS:NZ	5:B:764:HOH:O	2.32	0.46
1:A:93:THR:O	1:A:97[B]:THR:HG23	2.17	0.44
1:A:258:ARG:HD3	5:A:947:HOH:O	2.19	0.42
1:A:359:GLU:HG2	5:A:824:HOH:O	2.20	0.41
1:B:248:LEU:HD23	1:B:248:LEU:C	2.41	0.41

All (7) symmetry-related close contacts are listed below. The label for Atom-2 includes the symmetry operator and encoded unit-cell translations to be applied.

Atom-1	Atom-2	Interatomic distance (Å)	Clash overlap (Å)
5:A:1066:HOH:O	5:A:1117:HOH:O[2_545]	1.98	0.22
5:B:1007:HOH:O	5:B:1042:HOH:O[2_646]	2.07	0.13
5:A:1110:HOH:O	5:B:814:HOH:O[2_656]	2.10	0.10
5:A:1042:HOH:O	5:A:1103:HOH:O[1_655]	2.12	0.08
5:A:1031:HOH:O	5:B:932:HOH:O[1_455]	2.13	0.07
5:B:943:HOH:O	5:B:946:HOH:O[2_656]	2.16	0.04
5:A:842:HOH:O	5:B:904:HOH:O[2_656]	2.18	0.02

## 5.3 Torsion angles [i](#)

### 5.3.1 Protein backbone [i](#)

In the following table, the Percentiles column shows the percent Ramachandran outliers of the chain as a percentile score with respect to all X-ray entries followed by that with respect to entries of similar resolution.

The Analysed column shows the number of residues for which the backbone conformation was analysed, and the total number of residues.

Mol	Chain	Analysed	Favoured	Allowed	Outliers	Percentiles
1	A	391/390 (100%)	382 (98%)	8 (2%)	1 (0%)	41 17
1	B	390/390 (100%)	380 (97%)	9 (2%)	1 (0%)	41 17
All	All	781/780 (100%)	762 (98%)	17 (2%)	2 (0%)	41 17

All (2) Ramachandran outliers are listed below:

Mol	Chain	Res	Type
1	A	335	HIS
1	B	335	HIS

### 5.3.2 Protein sidechains [i](#)

In the following table, the Percentiles column shows the percent sidechain outliers of the chain as a percentile score with respect to all X-ray entries followed by that with respect to entries of similar resolution.

The Analysed column shows the number of residues for which the sidechain conformation was analysed, and the total number of residues.

Mol	Chain	Analysed	Rotameric	Outliers	Percentiles
1	A	310/307 (101%)	308 (99%)	2 (1%)	86 65

*Continued on next page...*

*Continued from previous page...*

Mol	Chain	Analysed	Rotameric	Outliers	Percentiles	
1	B	309/307 (101%)	308 (100%)	1 (0%)	92	78
All	All	619/614 (101%)	616 (100%)	3 (0%)	88	69

All (3) residues with a non-rotameric sidechain are listed below:

Mol	Chain	Res	Type
1	A	21	PHE
1	A	236	TRP
1	B	236	TRP

Some sidechains can be flipped to improve hydrogen bonding and reduce clashes. All (2) such sidechains are listed below:

Mol	Chain	Res	Type
1	A	214	ASN
1	B	214	ASN

### 5.3.3 RNA [i](#)

There are no RNA molecules in this entry.

## 5.4 Non-standard residues in protein, DNA, RNA chains [i](#)

There are no non-standard protein/DNA/RNA residues in this entry.

## 5.5 Carbohydrates [i](#)

There are no carbohydrates in this entry.

## 5.6 Ligand geometry [i](#)

Of 10 ligands modelled in this entry, 8 are monoatomic - leaving 2 for Mogul analysis.

In the following table, the Counts columns list the number of bonds (or angles) for which Mogul statistics could be retrieved, the number of bonds (or angles) that are observed in the model and the number of bonds (or angles) that are defined in the Chemical Component Dictionary. The Link column lists molecule types, if any, to which the group is linked. The Z score for a bond length (or angle) is the number of standard deviations the observed value is removed from the

expected value. A bond length (or angle) with  $|Z| > 2$  is considered an outlier worth inspection. RMSZ is the root-mean-square of all Z scores of the bond lengths (or angles).

Mol	Type	Chain	Res	Link	Bond lengths			Bond angles		
					Counts	RMSZ	# Z  > 2	Counts	RMSZ	# Z  > 2
4	AKR	A	405	2	1,4,4	1.28	0	0,4,4	0.00	-
4	AKR	B	405	2	1,4,4	1.25	0	0,4,4	0.00	-

In the following table, the Chirals column lists the number of chiral outliers, the number of chiral centers analysed, the number of these observed in the model and the number defined in the Chemical Component Dictionary. Similar counts are reported in the Torsion and Rings columns. '-' means no outliers of that kind were identified.

Mol	Type	Chain	Res	Link	Chirals	Torsions	Rings
4	AKR	A	405	2	-	0/0/2/2	-
4	AKR	B	405	2	-	0/0/2/2	-

There are no bond length outliers.

There are no bond angle outliers.

There are no chirality outliers.

There are no torsion outliers.

There are no ring outliers.

2 monomers are involved in 9 short contacts:

Mol	Chain	Res	Type	Clashes	Symm-Clashes
4	A	405	AKR	4	0
4	B	405	AKR	5	0

## 5.7 Other polymers [i](#)

There are no such residues in this entry.

## 5.8 Polymer linkage issues [i](#)

There are no chain breaks in this entry.

## 6 Fit of model and data [i](#)

### 6.1 Protein, DNA and RNA chains [i](#)

In the following table, the column labelled ‘#RSRZ> 2’ contains the number (and percentage) of RSRZ outliers, followed by percent RSRZ outliers for the chain as percentile scores relative to all X-ray entries and entries of similar resolution. The OWAB column contains the minimum, median, 95<sup>th</sup> percentile and maximum values of the occupancy-weighted average B-factor per residue. The column labelled ‘Q< 0.9’ lists the number of (and percentage) of residues with an average occupancy less than 0.9.

Mol	Chain	Analysed	<RSRZ>	#RSRZ>2	OWAB(Å <sup>2</sup> )	Q<0.9
1	A	390/390 (100%)	-0.42	5 (1%) 77 79	5, 9, 19, 38	0
1	B	390/390 (100%)	-0.38	7 (1%) 68 69	5, 9, 20, 39	0
All	All	780/780 (100%)	-0.40	12 (1%) 73 75	5, 9, 20, 39	0

All (12) RSRZ outliers are listed below:

Mol	Chain	Res	Type	RSRZ
1	B	43	LYS	4.4
1	A	43	LYS	3.7
1	B	390	ARG	3.4
1	B	42	GLY	3.3
1	A	41	ASP	3.2
1	B	41	ASP	2.8
1	A	82	THR	2.7
1	B	82	THR	2.4
1	A	42	GLY	2.3
1	B	2	ARG	2.3
1	A	81	GLU	2.2
1	B	39	VAL	2.1

### 6.2 Non-standard residues in protein, DNA, RNA chains [i](#)

There are no non-standard protein/DNA/RNA residues in this entry.

### 6.3 Carbohydrates [i](#)

There are no carbohydrates in this entry.

## 6.4 Ligands [i](#)

In the following table, the Atoms column lists the number of modelled atoms in the group and the number defined in the chemical component dictionary. The B-factors column lists the minimum, median, 95<sup>th</sup> percentile and maximum values of B factors of atoms in the group. The column labelled 'Q< 0.9' lists the number of atoms with occupancy less than 0.9.

Mol	Type	Chain	Res	Atoms	RSCC	RSR	B-factors( $\text{\AA}^2$ )	Q<0.9
4	AKR	A	405	5/5	0.89	0.12	9,10,16,20	0
4	AKR	B	405	5/5	0.89	0.12	10,14,17,20	0
3	CL	A	403	1/1	0.98	0.06	10,10,10,10	1
3	CL	B	403	1/1	0.98	0.07	11,11,11,11	1
3	CL	B	404	1/1	0.99	0.05	10,10,10,10	1
3	CL	B	402	1/1	0.99	0.04	10,10,10,10	1
3	CL	A	404	1/1	1.00	0.04	11,11,11,11	1
3	CL	A	402	1/1	1.00	0.03	10,10,10,10	1
2	MG	B	401	1/1	1.00	0.05	9,9,9,9	0
2	MG	A	401	1/1	1.00	0.05	9,9,9,9	0

## 6.5 Other polymers [i](#)

There are no such residues in this entry.