



Full wwPDB X-ray Structure Validation Report ⓘ

May 17, 2020 – 03:00 am BST

PDB ID : 3KFF
Title : Major mouse urinary protein IV complexed with 2-sec-butyl-4,5-dihydrothiazole
Authors : Perez-Miller, S.; Zou, Q.; Hurley, T.D.
Deposited on : 2009-10-27
Resolution : 0.96 Å(reported)

This is a Full wwPDB X-ray Structure Validation Report for a publicly released PDB entry.

We welcome your comments at validation@mail.wwpdb.org

A user guide is available at

<https://www.wwpdb.org/validation/2017/XrayValidationReportHelp>

with specific help available everywhere you see the ⓘ symbol.

The following versions of software and data (see [references ⓘ](#)) were used in the production of this report:

MolProbity : 4.02b-467
Mogul : 1.8.5 (274361), CSD as541be (2020)
Xtriage (Phenix) : 1.13
EDS : 2.11
Percentile statistics : 20191225.v01 (using entries in the PDB archive December 25th 2019)
Refmac : 5.8.0158
CCP4 : 7.0.044 (Gargrove)
Ideal geometry (proteins) : Engh & Huber (2001)
Ideal geometry (DNA, RNA) : Parkinson et al. (1996)
Validation Pipeline (wwPDB-VP) : 2.11

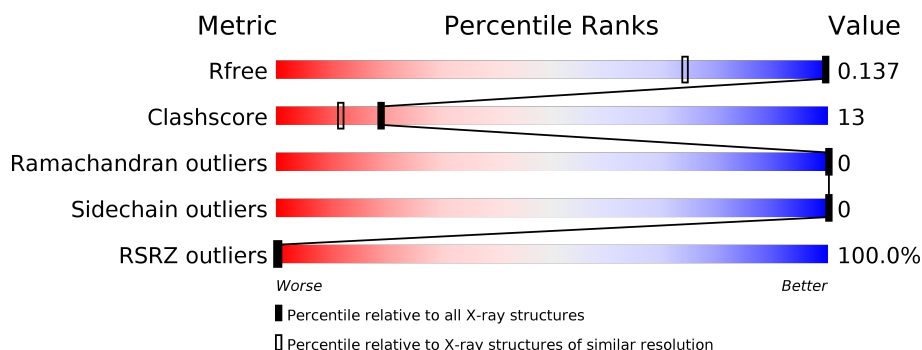
1 Overall quality at a glance

The following experimental techniques were used to determine the structure:

X-RAY DIFFRACTION

The reported resolution of this entry is 0.96 Å.

Percentile scores (ranging between 0-100) for global validation metrics of the entry are shown in the following graphic. The table shows the number of entries on which the scores are based.



Metric	Whole archive (#Entries)	Similar resolution (#Entries, resolution range(Å))
R_{free}	130704	1243 (1.06-0.86)
Clashscore	141614	1321 (1.06-0.86)
Ramachandran outliers	138981	1233 (1.06-0.86)
Sidechain outliers	138945	1235 (1.06-0.86)
RSRZ outliers	127900	1209 (1.06-0.86)

The table below summarises the geometric issues observed across the polymeric chains and their fit to the electron density. The red, orange, yellow and green segments on the lower bar indicate the fraction of residues that contain outliers for ≥ 3 , 2, 1 and 0 types of geometric quality criteria respectively. A grey segment represents the fraction of residues that are not modelled. The numeric value for each fraction is indicated below the corresponding segment, with a dot representing fractions $\leq 5\%$. The upper red bar (where present) indicates the fraction of residues that have poor fit to the electron density. The numeric value is given above the bar.

Mol	Chain	Length	Quality of chain
1	A	162	<div> <div>94%</div> <div>78% 15% 6%</div> </div>

The following table lists non-polymeric compounds, carbohydrate monomers and non-standard residues in protein, DNA, RNA chains that are outliers for geometric or electron-density-fit criteria:

Mol	Type	Chain	Res	Chirality	Geometry	Clashes	Electron density
3	XBT	A	301[A]	-	-	X	X
4	ZBT	A	302[B]	-	-	-	X

2 Entry composition [i](#)

There are 5 unique types of molecules in this entry. The entry contains 1711 atoms, of which 0 are hydrogens and 0 are deuteriums.

In the tables below, the ZeroOcc column contains the number of atoms modelled with zero occupancy, the AltConf column contains the number of residues with at least one atom in alternate conformation and the Trace column contains the number of residues modelled with at most 2 atoms.

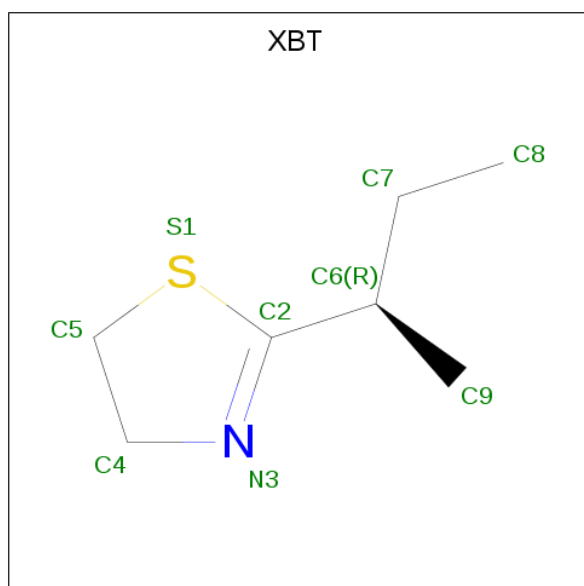
- Molecule 1 is a protein called Major urinary protein 4.

Mol	Chain	Residues	Atoms					ZeroOcc	AltConf	Trace
			Total	C	N	O	S			
1	A	152	1348	862	220	258	8	10	26	0

- Molecule 2 is CHLORIDE ION (three-letter code: CL) (formula: Cl).

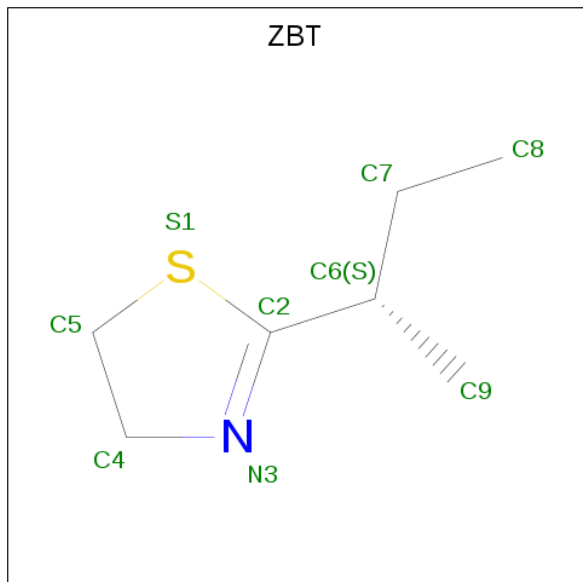
Mol	Chain	Residues	Atoms		ZeroOcc	AltConf
2	A	1	Total	Cl	0	0
			1	1		

- Molecule 3 is 2-[(1R)-1-methylpropyl]-4,5-dihydro-1,3-thiazole (three-letter code: XBT) (formula: C₇H₁₃NS).



Mol	Chain	Residues	Atoms				ZeroOcc	AltConf
3	A	1	Total	C	N	S	0	1
			9	7	1	1		

- Molecule 4 is 2-[(1S)-1-methylpropyl]-4,5-dihydro-1,3-thiazole (three-letter code: ZBT) (formula: C₇H₁₃NS).



Mol	Chain	Residues	Atoms				ZeroOcc	AltConf
4	A	1	Total	C	N	S	0	1
			9	7	1	1		

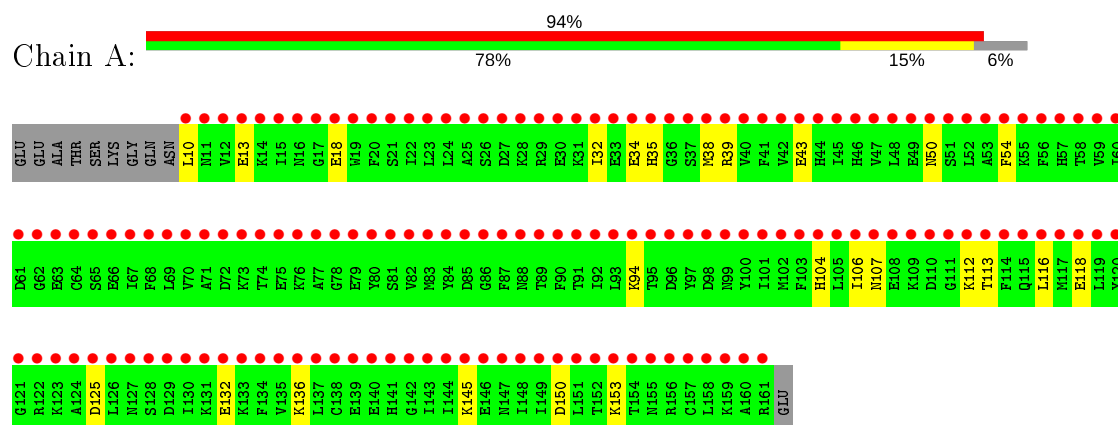
- Molecule 5 is water.

Mol	Chain	Residues	Atoms		ZeroOcc	AltConf
5	A	314	Total	O	0	30
			344	344		

3 Residue-property plots [i](#)

These plots are drawn for all protein, RNA and DNA chains in the entry. The first graphic for a chain summarises the proportions of the various outlier classes displayed in the second graphic. The second graphic shows the sequence view annotated by issues in geometry and electron density. Residues are color-coded according to the number of geometric quality criteria for which they contain at least one outlier: green = 0, yellow = 1, orange = 2 and red = 3 or more. A red dot above a residue indicates a poor fit to the electron density ($\text{RSRZ} > 2$). Stretches of 2 or more consecutive residues without any outlier are shown as a green connector. Residues present in the sample, but not in the model, are shown in grey.

- Molecule 1: Major urinary protein 4



4 Data and refinement statistics

Property	Value	Source
Space group	P 21 21 21	Depositor
Cell constants a, b, c, α , β , γ	47.62Å 53.75Å 61.25Å 90.00° 90.00° 90.00°	Depositor
Resolution (Å)	17.70 – 0.96 17.74 – 0.96	Depositor EDS
% Data completeness (in resolution range)	95.3 (17.70-0.96) 95.8 (17.74-0.96)	Depositor EDS
R_{merge}	0.07	Depositor
R_{sym}	(Not available)	Depositor
$\langle I/\sigma(I) \rangle$ ¹	1.44 (at 0.96Å)	Xtriage
Refinement program	SHELX, SHELXL-97	Depositor
R, R_{free}	0.136 , 0.164 0.135 , 0.137	Depositor DCC
R_{free} test set	4572 reflections (4.96%)	wwPDB-VP
Wilson B-factor (Å ²)	4.9	Xtriage
Anisotropy	0.238	Xtriage
Bulk solvent k_{sol} (e/Å ³), B_{sol} (Å ²)	0.29 , 54.4	EDS
L-test for twinning ²	$\langle L \rangle = 0.48$, $\langle L^2 \rangle = 0.31$	Xtriage
Estimated twinning fraction	No twinning to report.	Xtriage
F_o, F_c correlation	0.97	EDS
Total number of atoms	1711	wwPDB-VP
Average B, all atoms (Å ²)	14.0	wwPDB-VP

Xtriage's analysis on translational NCS is as follows: *The largest off-origin peak in the Patterson function is 7.73% of the height of the origin peak. No significant pseudotranslation is detected.*

¹Intensities estimated from amplitudes.

²Theoretical values of $\langle |L| \rangle$, $\langle L^2 \rangle$ for acentric reflections are 0.5, 0.333 respectively for untwinned datasets, and 0.375, 0.2 for perfectly twinned datasets.

5 Model quality [i](#)

5.1 Standard geometry [i](#)

Bond lengths and bond angles in the following residue types are not validated in this section: XBT, ZBT, CL

The Z score for a bond length (or angle) is the number of standard deviations the observed value is removed from the expected value. A bond length (or angle) with $|Z| > 5$ is considered an outlier worth inspection. RMSZ is the root-mean-square of all Z scores of the bond lengths (or angles).

Mol	Chain	Bond lengths		Bond angles	
		RMSZ	$\# Z > 5$	RMSZ	$\# Z > 5$
1	A	0.64	0/1491	1.05	1/1994 (0.1%)

There are no bond length outliers.

All (1) bond angle outliers are listed below:

Mol	Chain	Res	Type	Atoms	Z	Observed($^{\circ}$)	Ideal($^{\circ}$)
1	A	125	ASP	CB-CG-OD2	5.69	123.42	118.30

There are no chirality outliers.

There are no planarity outliers.

5.2 Too-close contacts [i](#)

In the following table, the Non-H and H(model) columns list the number of non-hydrogen atoms and hydrogen atoms in the chain respectively. The H(added) column lists the number of hydrogen atoms added and optimized by MolProbity. The Clashes column lists the number of clashes within the asymmetric unit, whereas Symm-Clashes lists symmetry related clashes.

Mol	Chain	Non-H	H(model)	H(added)	Clashes	Symm-Clashes
1	A	1348	0	1343	30	1
2	A	1	0	0	0	0
3	A	9	0	13	6	0
4	A	9	0	13	3	0
5	A	344	0	0	18	1
All	All	1711	0	1369	36	1

The all-atom clashscore is defined as the number of clashes found per 1000 atoms (including hydrogen atoms). The all-atom clashscore for this structure is 13.

All (36) close contacts within the same asymmetric unit are listed below, sorted by their clash magnitude.

Atom-1	Atom-2	Interatomic distance (Å)	Clash overlap (Å)
3:A:301[A]:XBT:C9	5:A:809:HOH:O	1.96	1.14
3:A:301[A]:XBT:H9	5:A:809:HOH:O	1.53	1.08
4:A:302[B]:ZBT:C9	5:A:809:HOH:O	2.06	1.02
4:A:302[B]:ZBT:H9	5:A:809:HOH:O	1.68	0.92
1:A:153[B]:LYS:NZ	5:A:821:HOH:O	2.13	0.81
1:A:34[A]:GLU:HG2	5:A:688:HOH:O	1.86	0.75
1:A:94:LYS:HE3	5:A:562:HOH:O	1.91	0.71
4:A:302[B]:ZBT:H9B	5:A:809:HOH:O	1.84	0.66
1:A:18[B]:GLU:HG2	5:A:751:HOH:O	1.95	0.66
1:A:43[A]:GLU:OE2	5:A:750:HOH:O	2.15	0.65
1:A:150[B]:ASP:OD1	1:A:153[B]:LYS:HD2	2.02	0.59
1:A:136[A]:LYS:HE3	5:A:695:HOH:O	2.01	0.59
1:A:145[B]:LYS:HD3	5:A:667:HOH:O	2.04	0.56
1:A:150[B]:ASP:OD1	1:A:153[B]:LYS:CD	2.55	0.55
1:A:54:PHE:CE2	3:A:301[A]:XBT:H13	2.43	0.54
1:A:150[B]:ASP:CG	1:A:153[B]:LYS:HD2	2.29	0.53
1:A:132:GLU:OE2	5:A:564:HOH:O	2.18	0.52
3:A:301[A]:XBT:H9A	5:A:809:HOH:O	1.83	0.52
1:A:54:PHE:CZ	3:A:301[A]:XBT:H13	2.44	0.52
1:A:35[A]:HIS:HD2	5:A:680:HOH:O	1.92	0.52
1:A:106[B]:ILE:HD12	5:A:794:HOH:O	2.10	0.51
1:A:38:MET:SD	1:A:116[B]:LEU:HD11	2.50	0.51
1:A:150[B]:ASP:OD1	1:A:153[B]:LYS:CE	2.60	0.50
1:A:10:LEU:N	5:A:703:HOH:O	2.46	0.49
1:A:32:ILE:O	1:A:39[A]:ARG:HD3	2.13	0.48
1:A:104:HIS:HE1	1:A:106[B]:ILE:HD11	1.79	0.47
1:A:50:ASN:O	1:A:50:ASN:ND2	2.48	0.46
1:A:38:MET:CG	1:A:116[B]:LEU:HD11	2.45	0.45
1:A:150[B]:ASP:OD1	1:A:153[B]:LYS:HE2	2.17	0.45
1:A:136[B]:LYS:HG3	5:A:618:HOH:O	2.17	0.44
1:A:107:ASN:O	1:A:113:THR:HA	2.18	0.44
1:A:145[B]:LYS:HE3	1:A:145[B]:LYS:HB3	1.66	0.44
1:A:34[B]:GLU:HA	1:A:39[B]:ARG:HD3	1.99	0.43
1:A:34[B]:GLU:O	1:A:35[B]:HIS:HB2	2.19	0.42
1:A:118[A]:GLU:OE2	3:A:301[A]:XBT:N3	2.54	0.41

All (1) symmetry-related close contacts are listed below. The label for Atom-2 includes the symmetry operator and encoded unit-cell translations to be applied.

Atom-1	Atom-2	Interatomic distance (Å)	Clash overlap (Å)
1:A:112:LYS:NZ	5:A:522:HOH:O[3_555]	2.18	0.02

5.3 Torsion angles [i](#)

5.3.1 Protein backbone [i](#)

In the following table, the Percentiles column shows the percent Ramachandran outliers of the chain as a percentile score with respect to all X-ray entries followed by that with respect to entries of similar resolution.

The Analysed column shows the number of residues for which the backbone conformation was analysed, and the total number of residues.

Mol	Chain	Analysed	Favoured	Allowed	Outliers	Percentiles	
1	A	176/162 (109%)	172 (98%)	4 (2%)	0	100	100

There are no Ramachandran outliers to report.

5.3.2 Protein sidechains [i](#)

In the following table, the Percentiles column shows the percent sidechain outliers of the chain as a percentile score with respect to all X-ray entries followed by that with respect to entries of similar resolution.

The Analysed column shows the number of residues for which the sidechain conformation was analysed, and the total number of residues.

Mol	Chain	Analysed	Rotameric	Outliers	Percentiles	
1	A	164/146 (112%)	164 (100%)	0	100	100

There are no protein residues with a non-rotameric sidechain to report.

Some sidechains can be flipped to improve hydrogen bonding and reduce clashes. There are no such sidechains identified.

5.3.3 RNA [i](#)

There are no RNA molecules in this entry.

5.4 Non-standard residues in protein, DNA, RNA chains [i](#)

There are no non-standard protein/DNA/RNA residues in this entry.

5.5 Carbohydrates [i](#)

There are no carbohydrates in this entry.

5.6 Ligand geometry [i](#)

Of 3 ligands modelled in this entry, 1 is monoatomic - leaving 2 for Mogul analysis.

In the following table, the Counts columns list the number of bonds (or angles) for which Mogul statistics could be retrieved, the number of bonds (or angles) that are observed in the model and the number of bonds (or angles) that are defined in the Chemical Component Dictionary. The Link column lists molecule types, if any, to which the group is linked. The Z score for a bond length (or angle) is the number of standard deviations the observed value is removed from the expected value. A bond length (or angle) with $|Z| > 2$ is considered an outlier worth inspection. RMSZ is the root-mean-square of all Z scores of the bond lengths (or angles).

Mol	Type	Chain	Res	Link	Bond lengths			Bond angles		
					Counts	RMSZ	$\# Z > 2$	Counts	RMSZ	$\# Z > 2$
3	XBT	A	301[A]	-	7,9,9	1.21	1 (14%)	9,11,11	2.55	3 (33%)
4	ZBT	A	302[B]	-	7,9,9	1.15	1 (14%)	9,11,11	2.41	3 (33%)

In the following table, the Chirals column lists the number of chiral outliers, the number of chiral centers analysed, the number of these observed in the model and the number defined in the Chemical Component Dictionary. Similar counts are reported in the Torsion and Rings columns. '-' means no outliers of that kind were identified.

Mol	Type	Chain	Res	Link	Chirals	Torsions	Rings
3	XBT	A	301[A]	-	-	5/6/13/13	0/1/1/1
4	ZBT	A	302[B]	-	-	0/6/13/13	0/1/1/1

All (2) bond length outliers are listed below:

Mol	Chain	Res	Type	Atoms	Z	Observed(Å)	Ideal(Å)
3	A	301[A]	XBT	C2-S1	-2.81	1.68	1.77
4	A	302[B]	ZBT	C2-S1	-2.61	1.68	1.77

All (6) bond angle outliers are listed below:

Mol	Chain	Res	Type	Atoms	Z	Observed($^{\circ}$)	Ideal($^{\circ}$)
3	A	301[A]	XBT	S1-C2-N3	-6.16	111.07	118.58
4	A	302[B]	ZBT	S1-C2-N3	-5.68	111.66	118.58
4	A	302[B]	ZBT	C5-C4-N3	-3.26	106.10	111.03
3	A	301[A]	XBT	C5-C4-N3	-3.06	106.40	111.03
3	A	301[A]	XBT	C5-S1-C2	3.00	95.58	89.27
4	A	302[B]	ZBT	C5-S1-C2	2.69	94.93	89.27

There are no chirality outliers.

All (5) torsion outliers are listed below:

Mol	Chain	Res	Type	Atoms
3	A	301[A]	XBT	S1-C2-C6-C7
3	A	301[A]	XBT	N3-C2-C6-C7
3	A	301[A]	XBT	C2-C6-C7-C8
3	A	301[A]	XBT	C9-C6-C7-C8
3	A	301[A]	XBT	S1-C2-C6-C9

There are no ring outliers.

2 monomers are involved in 9 short contacts:

Mol	Chain	Res	Type	Clashes	Symm-Clashes
3	A	301[A]	XBT	6	0
4	A	302[B]	ZBT	3	0

5.7 Other polymers [i](#)

There are no such residues in this entry.

5.8 Polymer linkage issues [i](#)

There are no chain breaks in this entry.

6 Fit of model and data

6.1 Protein, DNA and RNA chains

In the following table, the column labelled ‘#RSRZ> 2’ contains the number (and percentage) of RSRZ outliers, followed by percent RSRZ outliers for the chain as percentile scores relative to all X-ray entries and entries of similar resolution. The OWAB column contains the minimum, median, 95th percentile and maximum values of the occupancy-weighted average B-factor per residue. The column labelled ‘Q< 0.9’ lists the number of (and percentage) of residues with an average occupancy less than 0.9.

Mol	Chain	Analysed	<RSRZ>	#RSRZ>2	OWAB(Å ²)	Q<0.9
1	A	152/162 (93%)	8.79	152 (100%) 0 0	6, 10, 19, 30	5 (3%)

All (152) RSRZ outliers are listed below:

Mol	Chain	Res	Type	RSRZ
1	A	10	LEU	15.8
1	A	19	TRP	14.5
1	A	106[A]	ILE	13.4
1	A	137[A]	LEU	13.0
1	A	119	LEU	12.9
1	A	22[A]	ILE	12.8
1	A	41	PHE	12.6
1	A	116[A]	LEU	12.4
1	A	42	VAL	12.2
1	A	138	CYS	12.2
1	A	45	ILE	12.2
1	A	20	PHE	12.1
1	A	144	ILE	12.1
1	A	23	LEU	12.0
1	A	114	PHE	11.9
1	A	143	ILE	11.9
1	A	101	ILE	11.9
1	A	134	PHE	11.8
1	A	92	ILE	11.6
1	A	90	PHE	11.6
1	A	103	PHE	11.6
1	A	120	TYR	11.6
1	A	32	ILE	11.5
1	A	100	TYR	11.5
1	A	126	LEU	11.4
1	A	148	ILE	11.4
1	A	151	LEU	11.3

Continued on next page...

Continued from previous page...

Mol	Chain	Res	Type	RSRZ
1	A	105	LEU	11.2
1	A	40	VAL	11.1
1	A	149	ILE	11.1
1	A	54	PHE	11.1
1	A	87	PHE	11.1
1	A	84	TYR	11.1
1	A	15	ILE	11.0
1	A	130	ILE	11.0
1	A	25	ALA	11.0
1	A	70	VAL	10.9
1	A	135	VAL	10.9
1	A	69	LEU	10.9
1	A	93	LEU	10.9
1	A	97	TYR	10.8
1	A	24	LEU	10.8
1	A	59	VAL	10.8
1	A	56	PHE	10.7
1	A	48[A]	LEU	10.7
1	A	67	ILE	10.7
1	A	47	VAL	10.6
1	A	82	VAL	10.6
1	A	52	LEU	10.6
1	A	68	PHE	10.4
1	A	12	VAL	10.4
1	A	158	LEU	10.4
1	A	80	TYR	10.4
1	A	157	CYS	10.4
1	A	71	ALA	10.3
1	A	60	ILE	10.3
1	A	53	ALA	10.2
1	A	75	GLU	10.2
1	A	64	CYS	9.8
1	A	50	ASN	9.7
1	A	91	THR	9.6
1	A	76	LYS	9.4
1	A	121	GLY	9.4
1	A	160	ALA	9.0
1	A	58	THR	9.0
1	A	154	THR	9.0
1	A	124	ALA	8.8
1	A	35[A]	HIS	8.8
1	A	113	THR	8.8

Continued on next page...

Continued from previous page...

Mol	Chain	Res	Type	RSRZ
1	A	152[A]	THR	8.6
1	A	89	THR	8.6
1	A	95	THR	8.6
1	A	111	GLY	8.6
1	A	77	ALA	8.5
1	A	142	GLY	8.2
1	A	117	MET	8.1
1	A	110[A]	ASP	8.0
1	A	86	GLY	8.0
1	A	83[A]	MET	8.0
1	A	98[A]	ASP	7.9
1	A	36	GLY	7.9
1	A	136[A]	LYS	7.9
1	A	145[A]	LYS	7.9
1	A	21	SER	7.8
1	A	17	GLY	7.8
1	A	104	HIS	7.7
1	A	16	ASN	7.7
1	A	107	ASN	7.7
1	A	94	LYS	7.6
1	A	62	GLY	7.6
1	A	88	ASN	7.6
1	A	81	SER	7.5
1	A	74	THR	7.4
1	A	26	SER	7.4
1	A	39[A]	ARG	7.4
1	A	102	MET	7.4
1	A	78	GLY	7.3
1	A	44	HIS	7.2
1	A	141	HIS	7.2
1	A	99[A]	ASN	7.1
1	A	11	ASN	7.1
1	A	46	HIS	7.1
1	A	155	ASN	7.1
1	A	65	SER	7.1
1	A	115	GLN	7.1
1	A	147	ASN	7.0
1	A	129[A]	ASP	7.0
1	A	57	HIS	7.0
1	A	161	ARG	7.0
1	A	150[A]	ASP	7.0
1	A	49	GLU	6.9

Continued on next page...

Continued from previous page...

Mol	Chain	Res	Type	RSRZ
1	A	38	MET	6.9
1	A	122	ARG	6.8
1	A	125	ASP	6.8
1	A	112	LYS	6.8
1	A	127	ASN	6.8
1	A	153[A]	LYS	6.8
1	A	123	LYS	6.8
1	A	159[A]	LYS	6.8
1	A	37	SER	6.8
1	A	34[A]	GLU	6.8
1	A	128[A]	SER	6.7
1	A	156	ARG	6.7
1	A	27	ASP	6.6
1	A	96	ASP	6.5
1	A	13[A]	GLU	6.5
1	A	51	SER	6.4
1	A	85	ASP	6.3
1	A	109[A]	LYS	6.3
1	A	118[A]	GLU	6.3
1	A	55	LYS	6.2
1	A	14	LYS	6.2
1	A	72	ASP	6.1
1	A	63	GLU	6.1
1	A	18[A]	GLU	6.1
1	A	131	LYS	6.1
1	A	133	LYS	6.1
1	A	146	GLU	6.0
1	A	61	ASP	5.9
1	A	28	LYS	5.9
1	A	73[A]	LYS	5.7
1	A	43[A]	GLU	5.6
1	A	79	GLU	5.6
1	A	29	ARG	5.6
1	A	31	LYS	5.5
1	A	30	GLU	5.5
1	A	132	GLU	5.4
1	A	139	GLU	5.4
1	A	140	GLU	5.3
1	A	33	GLU	5.3
1	A	108	GLU	5.2
1	A	66	GLU	4.8

6.2 Non-standard residues in protein, DNA, RNA chains [i](#)

There are no non-standard protein/DNA/RNA residues in this entry.

6.3 Carbohydrates [i](#)

There are no carbohydrates in this entry.

6.4 Ligands [i](#)

In the following table, the Atoms column lists the number of modelled atoms in the group and the number defined in the chemical component dictionary. The B-factors column lists the minimum, median, 95th percentile and maximum values of B factors of atoms in the group. The column labelled 'Q< 0.9' lists the number of atoms with occupancy less than 0.9.

Mol	Type	Chain	Res	Atoms	RSCC	RSR	B-factors(\AA^2)	Q<0.9
3	XBT	A	301[A]	9/9	0.70	0.45	14,15,20,22	9
4	ZBT	A	302[B]	9/9	0.71	0.51	13,15,19,21	9
2	CL	A	201	1/1	0.99	0.35	8,8,8,8	0

6.5 Other polymers [i](#)

There are no such residues in this entry.