



Full wwPDB X-ray Structure Validation Report ⓘ

Aug 9, 2020 – 03:31 PM BST

PDB ID : 6KF7
Title : Microbial Hormone-sensitive lipase E53 mutant S285G
Authors : Xiaochen, Y.; Zhengyang, L.; Xuewei, X.; Jixi, L.
Deposited on : 2019-07-06
Resolution : 1.80 Å(reported)

This is a Full wwPDB X-ray Structure Validation Report for a publicly released PDB entry.

We welcome your comments at validation@mail.wwpdb.org

A user guide is available at

<https://www.wwpdb.org/validation/2017/XrayValidationReportHelp>

with specific help available everywhere you see the ⓘ symbol.

The following versions of software and data (see [references ⓘ](#)) were used in the production of this report:

MolProbity : 4.02b-467
Mogul : 1.8.5 (274361), CSD as541be (2020)
Xtriage (Phenix) : 1.13
EDS : 2.13.1
buster-report : 1.1.7 (2018)
Percentile statistics : 20191225.v01 (using entries in the PDB archive December 25th 2019)
Refmac : 5.8.0158
CCP4 : 7.0.044 (Gargrove)
Ideal geometry (proteins) : Engh & Huber (2001)
Ideal geometry (DNA, RNA) : Parkinson et al. (1996)
Validation Pipeline (wwPDB-VP) : 2.13.1

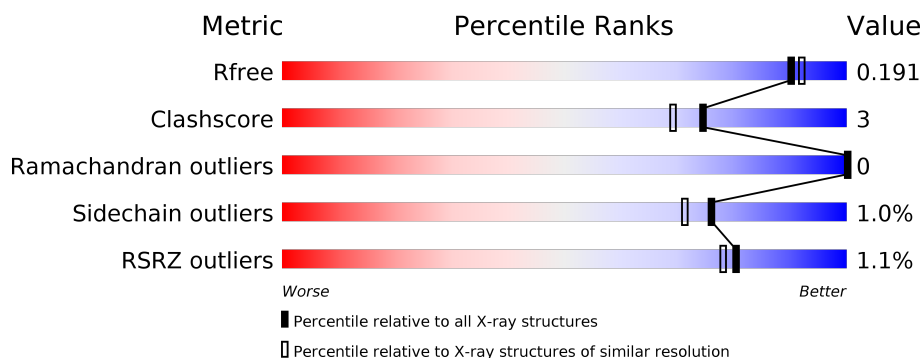
1 Overall quality at a glance

The following experimental techniques were used to determine the structure:

X-RAY DIFFRACTION

The reported resolution of this entry is 1.80 Å.

Percentile scores (ranging between 0-100) for global validation metrics of the entry are shown in the following graphic. The table shows the number of entries on which the scores are based.



Metric	Whole archive (#Entries)	Similar resolution (#Entries, resolution range(Å))
R_{free}	130704	5950 (1.80-1.80)
Clashscore	141614	6793 (1.80-1.80)
Ramachandran outliers	138981	6697 (1.80-1.80)
Sidechain outliers	138945	6696 (1.80-1.80)
RSRZ outliers	127900	5850 (1.80-1.80)

The table below summarises the geometric issues observed across the polymeric chains and their fit to the electron density. The red, orange, yellow and green segments on the lower bar indicate the fraction of residues that contain outliers for ≥ 3 , 2, 1 and 0 types of geometric quality criteria respectively. A grey segment represents the fraction of residues that are not modelled. The numeric value for each fraction is indicated below the corresponding segment, with a dot representing fractions $\leq 5\%$. The upper red bar (where present) indicates the fraction of residues that have poor fit to the electron density. The numeric value is given above the bar.

Mol	Chain	Length	Quality of chain
1	A	314	<div> <div>%</div> <div> <div></div> <div>94%</div> <div>• •</div> </div> </div>
1	B	314	<div> <div>2%</div> <div> <div></div> <div>95%</div> <div>• •</div> </div> </div>
1	C	314	<div> <div>%</div> <div> <div></div> <div>94%</div> <div>• •</div> </div> </div>
1	D	314	<div> <div></div> <div> <div></div> <div>93%</div> <div>5% •</div> </div> </div>

The following table lists non-polymeric compounds, carbohydrate monomers and non-standard residues in protein, DNA, RNA chains that are outliers for geometric or electron-density-fit crite-

ria:

Mol	Type	Chain	Res	Chirality	Geometry	Clashes	Electron density
4	EDO	A	407	-	-	-	X
5	GOL	B	404	-	-	X	-
5	GOL	B	405	-	-	X	-

2 Entry composition

There are 9 unique types of molecules in this entry. The entry contains 10785 atoms, of which 0 are hydrogens and 0 are deuteriums.

In the tables below, the ZeroOcc column contains the number of atoms modelled with zero occupancy, the AltConf column contains the number of residues with at least one atom in alternate conformation and the Trace column contains the number of residues modelled with at most 2 atoms.

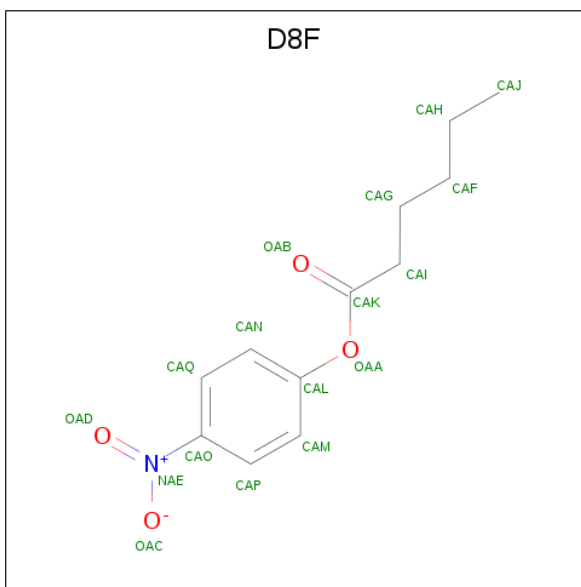
- Molecule 1 is a protein called Lipase.

Mol	Chain	Residues	Atoms					ZeroOcc	AltConf	Trace
1	A	309	Total	C	N	O	S	0	0	0
			2271	1440	390	429	12			
1	B	309	Total	C	N	O	S	0	0	0
			2281	1444	390	435	12			
1	C	309	Total	C	N	O	S	0	0	0
			2279	1444	390	433	12			
1	D	309	Total	C	N	O	S	0	0	0
			2283	1446	390	435	12			

There are 4 discrepancies between the modelled and reference sequences:

Chain	Residue	Modelled	Actual	Comment	Reference
A	285	GLY	SER	engineered mutation	UNP A0A074MDU6
B	285	GLY	SER	engineered mutation	UNP A0A074MDU6
C	285	GLY	SER	engineered mutation	UNP A0A074MDU6
D	285	GLY	SER	engineered mutation	UNP A0A074MDU6

- Molecule 2 is (4-nitrophenyl) hexanoate (three-letter code: D8F) (formula: C₁₂H₁₅NO₄) (labeled as "Ligand of Interest" by author).



Mol	Chain	Residues	Atoms				ZeroOcc	AltConf
2	A	1	Total	C	N	O	0	0
			17	12	1	4		
2	B	1	Total	C	N	O	0	0
			17	12	1	4		
2	C	1	Total	C	N	O	0	0
			17	12	1	4		
2	D	1	Total	C	N	O	0	0
			17	12	1	4		

- Molecule 3 is SULFATE ION (three-letter code: SO4) (formula: O₄S).



Mol	Chain	Residues	Atoms	ZeroOcc	AltConf
3	A	1	Total O S 5 4 1	0	0
3	D	1	Total O S 5 4 1	0	0

- Molecule 4 is 1,2-ETHANEDIOL (three-letter code: EDO) (formula: C₂H₆O₂).



Mol	Chain	Residues	Atoms	ZeroOcc	AltConf
4	A	1	Total C O 4 2 2	0	0
4	A	1	Total C O 4 2 2	0	0
4	A	1	Total C O 4 2 2	0	0
4	A	1	Total C O 4 2 2	0	0
4	A	1	Total C O 4 2 2	0	0
4	B	1	Total C O 4 2 2	0	0
4	B	1	Total C O 4 2 2	0	0
4	C	1	Total C O 4 2 2	0	0
4	C	1	Total C O 4 2 2	0	0
4	C	1	Total C O 4 2 2	0	0

Continued on next page...

Continued from previous page...

Mol	Chain	Residues	Atoms			ZeroOcc	AltConf
4	D	1	Total	C	O	0	0
			4	2	2		
4	D	1	Total	C	O	0	0
			4	2	2		
4	D	1	Total	C	O	0	0
			4	2	2		

- Molecule 5 is GLYCEROL (three-letter code: GOL) (formula: $C_3H_8O_3$).



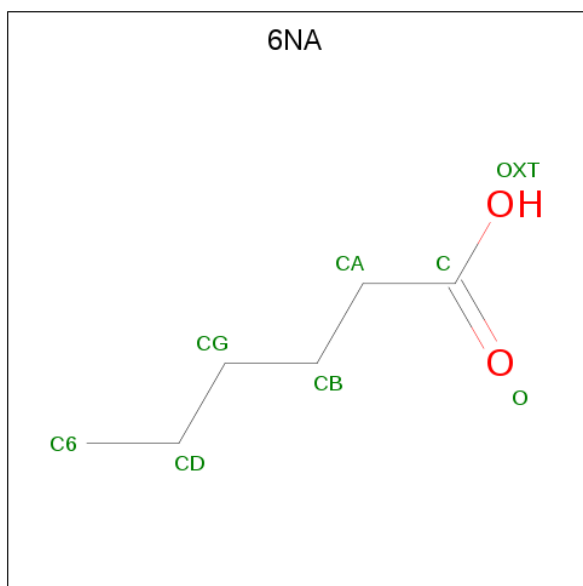
Mol	Chain	Residues	Atoms			ZeroOcc	AltConf
5	A	1	Total	C	O	0	0
			6	3	3		
5	A	1	Total	C	O	0	0
			6	3	3		
5	A	1	Total	C	O	0	0
			6	3	3		
5	A	1	Total	C	O	0	0
			6	3	3		
5	A	1	Total	C	O	0	0
			6	3	3		
5	B	1	Total	C	O	0	0
			6	3	3		
5	B	1	Total	C	O	0	0
			6	3	3		
5	B	1	Total	C	O	0	0
			6	3	3		

Continued on next page...

Continued from previous page...

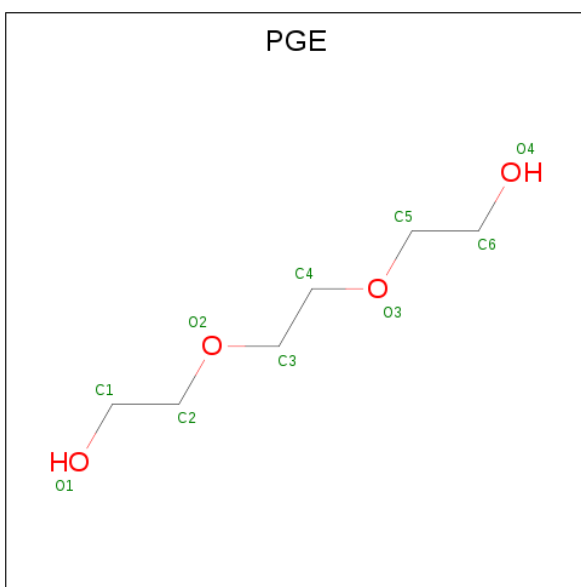
Mol	Chain	Residues	Atoms			ZeroOcc	AltConf
5	C	1	Total	C	O	0	0
			6	3	3		
5	C	1	Total	C	O	0	0
			6	3	3		
5	C	1	Total	C	O	0	0
			6	3	3		
5	C	1	Total	C	O	0	0
			6	3	3		
5	D	1	Total	C	O	0	0
			6	3	3		
5	D	1	Total	C	O	0	0
			6	3	3		
5	D	1	Total	C	O	0	0
			6	3	3		
5	D	1	Total	C	O	0	0
			6	3	3		

- Molecule 6 is HEXANOIC ACID (three-letter code: 6NA) (formula: $C_6H_{12}O_2$).



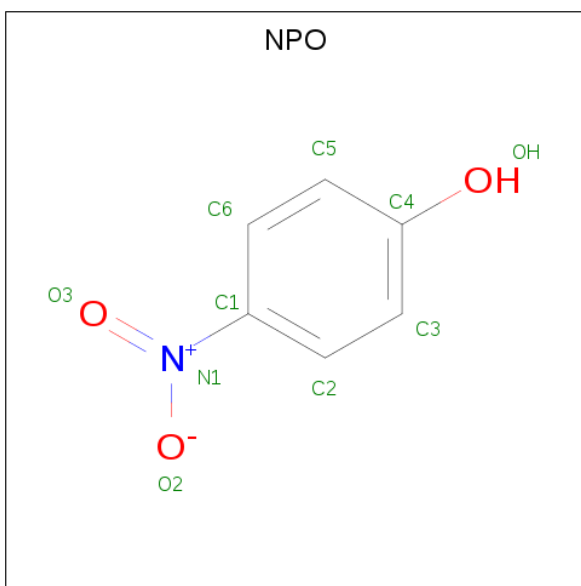
Mol	Chain	Residues	Atoms			ZeroOcc	AltConf
6	A	1	Total	C	O	0	0
			8	6	2		
6	C	1	Total	C	O	0	0
			8	6	2		

- Molecule 7 is TRIETHYLENE GLYCOL (three-letter code: PGE) (formula: $C_6H_{14}O_4$).



Mol	Chain	Residues	Atoms			ZeroOcc	AltConf
7	C	1	Total	C	O	0	0
			10	6	4		

- Molecule 8 is P-NITROPHENOL (three-letter code: NPO) (formula: $C_6H_5NO_3$).



Mol	Chain	Residues	Atoms				ZeroOcc	AltConf
8	D	1	Total	C	N	O	0	0
			10	6	1	3		

- Molecule 9 is water.

Mol	Chain	Residues	Atoms		ZeroOcc	AltConf
9	A	368	Total 368	O 368	0	0
9	B	323	Total 323	O 323	0	0
9	C	390	Total 390	O 390	0	0
9	D	328	Total 328	O 328	0	0

3 Residue-property plots [i](#)

These plots are drawn for all protein, RNA, DNA and oligosaccharide chains in the entry. The first graphic for a chain summarises the proportions of the various outlier classes displayed in the second graphic. The second graphic shows the sequence view annotated by issues in geometry and electron density. Residues are color-coded according to the number of geometric quality criteria for which they contain at least one outlier: green = 0, yellow = 1, orange = 2 and red = 3 or more. A red dot above a residue indicates a poor fit to the electron density ($RSRZ > 2$). Stretches of 2 or more consecutive residues without any outlier are shown as a green connector. Residues present in the sample, but not in the model, are shown in grey.

- Molecule 1: Lipase



- Molecule 1: Lipase



- Molecule 1: Lipase



- Molecule 1: Lipase



4 Data and refinement statistics

Property	Value	Source
Space group	P 2 ₁ 2 ₁ 2 ₁	Depositor
Cell constants a, b, c, α , β , γ	70.66Å 129.72Å 219.46Å 90.00° 90.00° 90.00°	Depositor
Resolution (Å)	48.53 – 1.80 48.53 – 1.80	Depositor EDS
% Data completeness (in resolution range)	99.6 (48.53-1.80) 99.6 (48.53-1.80)	Depositor EDS
R_{merge}	0.12	Depositor
R_{sym}	(Not available)	Depositor
$\langle I/\sigma(I) \rangle$ ¹	1.97 (at 1.79Å)	Xtriage
Refinement program	PHENIX	Depositor
R, R_{free}	0.169 , 0.191 0.169 , 0.191	Depositor DCC
R_{free} test set	9414 reflections (5.04%)	wwPDB-VP
Wilson B-factor (Å ²)	24.5	Xtriage
Anisotropy	0.028	Xtriage
Bulk solvent k_{sol} (e/Å ³), B_{sol} (Å ²)	0.37 , 48.0	EDS
L-test for twinning ²	$\langle L \rangle = 0.49$, $\langle L^2 \rangle = 0.32$	Xtriage
Estimated twinning fraction	No twinning to report.	Xtriage
F_o, F_c correlation	0.97	EDS
Total number of atoms	10785	wwPDB-VP
Average B, all atoms (Å ²)	28.0	wwPDB-VP

Xtriage's analysis on translational NCS is as follows: *The largest off-origin peak in the Patterson function is 15.39% of the height of the origin peak. No significant pseudotranslation is detected.*

¹Intensities estimated from amplitudes.

²Theoretical values of $\langle |L| \rangle$, $\langle L^2 \rangle$ for acentric reflections are 0.5, 0.333 respectively for untwinned datasets, and 0.375, 0.2 for perfectly twinned datasets.

5 Model quality [i](#)

5.1 Standard geometry [i](#)

Bond lengths and bond angles in the following residue types are not validated in this section: GOL, NPO, PGE, 6NA, EDO, SO4, D8F

The Z score for a bond length (or angle) is the number of standard deviations the observed value is removed from the expected value. A bond length (or angle) with $|Z| > 5$ is considered an outlier worth inspection. RMSZ is the root-mean-square of all Z scores of the bond lengths (or angles).

Mol	Chain	Bond lengths		Bond angles	
		RMSZ	$\# Z > 5$	RMSZ	$\# Z > 5$
1	A	0.36	0/2322	0.56	0/3171
1	B	0.34	0/2331	0.52	0/3181
1	C	0.37	0/2330	0.56	0/3181
1	D	0.34	0/2334	0.53	0/3186
All	All	0.35	0/9317	0.55	0/12719

There are no bond length outliers.

There are no bond angle outliers.

There are no chirality outliers.

There are no planarity outliers.

5.2 Too-close contacts [i](#)

In the following table, the Non-H and H(model) columns list the number of non-hydrogen atoms and hydrogen atoms in the chain respectively. The H(added) column lists the number of hydrogen atoms added and optimized by MolProbity. The Clashes column lists the number of clashes within the asymmetric unit, whereas Symm-Clashes lists symmetry related clashes.

Mol	Chain	Non-H	H(model)	H(added)	Clashes	Symm-Clashes
1	A	2271	0	2243	16	0
1	B	2281	0	2248	12	0
1	C	2279	0	2251	15	0
1	D	2283	0	2255	10	0
2	A	17	0	0	5	0
2	B	17	0	0	3	0
2	C	17	0	0	4	0
2	D	17	0	0	1	0
3	A	5	0	0	0	0

Continued on next page...

Continued from previous page...

Mol	Chain	Non-H	H(model)	H(added)	Clashes	Symm-Clashes
3	D	5	0	0	0	0
4	A	20	0	30	1	0
4	B	8	0	12	1	0
4	C	12	0	18	1	0
4	D	12	0	18	2	0
5	A	30	0	39	5	0
5	B	18	0	24	6	0
5	C	24	0	32	5	0
5	D	24	0	32	2	0
6	A	8	0	11	0	0
6	C	8	0	11	1	0
7	C	10	0	14	0	0
8	D	10	0	5	0	0
9	A	368	0	0	4	0
9	B	323	0	0	4	2
9	C	390	0	0	3	0
9	D	328	0	0	3	2
All	All	10785	0	9243	59	4

The all-atom clashscore is defined as the number of clashes found per 1000 atoms (including hydrogen atoms). The all-atom clashscore for this structure is 3.

All (59) close contacts within the same asymmetric unit are listed below, sorted by their clash magnitude.

Atom-1	Atom-2	Interatomic distance (Å)	Clash overlap (Å)
1:C:261:ARG:HH22	5:C:406:GOL:H11	1.25	1.01
1:A:261:ARG:HH12	5:A:409:GOL:H32	1.35	0.91
1:B:44:MET:SD	9:B:762:HOH:O	2.43	0.76
2:A:401:D8F:OAB	9:A:501:HOH:O	2.05	0.73
1:A:309:MET:SD	9:B:732:HOH:O	2.51	0.67
1:D:16:GLU:HB2	9:D:501:HOH:O	1.95	0.66
1:B:302:ARG:NH2	9:B:503:HOH:O	2.30	0.64
1:B:40:ALA:O	1:B:44:MET:HG3	1.99	0.62
1:A:163:ALA:H	2:A:401:D8F:CAN	2.13	0.61
1:D:9:PRO:HD2	4:D:403:EDO:H21	1.82	0.61
1:C:309:MET:O	4:C:404:EDO:H11	2.01	0.61
1:C:161:ASP:HB2	1:C:191:PHE:CE1	2.38	0.58
1:C:257:ARG:HH22	5:C:407:GOL:H11	1.68	0.58
1:A:228:ARG:NE	9:A:503:HOH:O	2.36	0.58
9:C:544:HOH:O	5:D:407:GOL:H11	2.04	0.57
1:C:163:ALA:H	2:C:401:D8F:CAN	2.18	0.56

Continued on next page...

Continued from previous page...

Atom-1	Atom-2	Interatomic distance (Å)	Clash overlap (Å)
1:D:295:SER:HB3	4:D:403:EDO:H11	1.87	0.55
1:B:257:ARG:HH22	5:B:404:GOL:H31	1.72	0.55
1:C:309:MET:SD	9:D:719:HOH:O	2.58	0.54
1:A:302:ARG:NH1	9:A:506:HOH:O	2.41	0.53
5:B:404:GOL:H32	5:B:405:GOL:HO3	1.77	0.50
1:A:91:GLY:H	2:A:401:D8F:CAN	2.25	0.50
1:C:163:ALA:H	2:C:401:D8F:CAQ	2.24	0.50
1:B:161:ASP:HB2	1:B:191:PHE:CE1	2.46	0.50
1:B:261:ARG:HH22	5:B:405:GOL:C1	2.24	0.49
1:B:163:ALA:H	2:B:401:D8F:CAN	2.26	0.49
1:A:124:PRO:HB3	5:A:412:GOL:H31	1.96	0.48
1:B:91:GLY:H	2:B:401:D8F:CAN	2.26	0.47
1:B:163:ALA:H	2:B:401:D8F:CAQ	2.28	0.47
1:D:163:ALA:H	2:D:401:D8F:CAQ	2.27	0.47
1:B:261:ARG:HH12	5:B:405:GOL:H11	1.79	0.46
1:A:221:ASP:OD2	1:A:228:ARG:NH2	2.48	0.46
1:C:261:ARG:NH2	5:C:406:GOL:H11	2.10	0.46
1:A:228:ARG:NH1	5:A:408:GOL:H31	2.31	0.46
1:D:196:ASP:OD2	1:D:228:ARG:NH1	2.48	0.46
1:B:298:GLY:O	1:B:302:ARG:HG3	2.16	0.46
1:A:198:VAL:HG23	5:A:408:GOL:O3	2.17	0.45
1:A:265:LYS:HE3	4:A:406:EDO:H11	1.98	0.45
5:B:404:GOL:H32	5:B:405:GOL:O3	2.17	0.45
1:C:75:ARG:HG2	5:C:408:GOL:H12	1.99	0.45
1:A:163:ALA:H	2:A:401:D8F:CAQ	2.30	0.45
1:C:163:ALA:N	2:C:401:D8F:CAQ	2.80	0.45
1:A:161:ASP:HB2	1:A:191:PHE:CE1	2.52	0.44
1:C:261:ARG:HH22	5:C:406:GOL:C1	2.13	0.44
1:C:91:GLY:H	2:C:401:D8F:CAN	2.31	0.44
4:B:402:EDO:O1	9:B:501:HOH:O	2.00	0.44
1:D:161:ASP:HB2	1:D:191:PHE:CE1	2.53	0.43
1:D:31:LEU:HD11	1:D:124:PRO:HD2	2.00	0.43
1:D:221:ASP:OD2	1:D:228:ARG:NH2	2.51	0.43
1:A:124:PRO:HG3	5:A:412:GOL:H12	2.01	0.43
1:B:257:ARG:HH22	5:B:404:GOL:C3	2.32	0.42
1:D:308:LYS:NZ	9:D:512:HOH:O	2.51	0.42
1:A:204:GLU:HG2	9:A:591:HOH:O	2.20	0.42
1:C:204:GLU:HG2	9:C:552:HOH:O	2.19	0.42
1:A:163:ALA:N	2:A:401:D8F:CAQ	2.83	0.41
1:C:96:ASP:HB2	6:C:409:6NA:H6C1	2.03	0.41
9:C:588:HOH:O	5:D:407:GOL:H32	2.20	0.41

Continued on next page...

Continued from previous page...

Atom-1	Atom-2	Interatomic distance (Å)	Clash overlap (Å)
1:D:83:VAL:HG22	1:D:114:PRO:HG2	2.02	0.41
1:C:123:ALA:HB1	1:C:124:PRO:HA	2.04	0.40

All (4) symmetry-related close contacts are listed below. The label for Atom-2 includes the symmetry operator and encoded unit-cell translations to be applied.

Atom-1	Atom-2	Interatomic distance (Å)	Clash overlap (Å)
9:D:501:HOH:O	9:D:501:HOH:O[2_754]	1.78	0.42
9:D:716:HOH:O	9:D:716:HOH:O[2_754]	1.79	0.41
9:B:753:HOH:O	9:B:753:HOH:O[2_555]	2.04	0.16
9:B:742:HOH:O	9:B:753:HOH:O[2_555]	2.07	0.13

5.3 Torsion angles ⓘ

5.3.1 Protein backbone ⓘ

In the following table, the Percentiles column shows the percent Ramachandran outliers of the chain as a percentile score with respect to all X-ray entries followed by that with respect to entries of similar resolution.

The Analysed column shows the number of residues for which the backbone conformation was analysed, and the total number of residues.

Mol	Chain	Analysed	Favoured	Allowed	Outliers	Percentiles	
1	A	307/314 (98%)	298 (97%)	9 (3%)	0	100	100
1	B	307/314 (98%)	297 (97%)	10 (3%)	0	100	100
1	C	307/314 (98%)	298 (97%)	9 (3%)	0	100	100
1	D	307/314 (98%)	298 (97%)	9 (3%)	0	100	100
All	All	1228/1256 (98%)	1191 (97%)	37 (3%)	0	100	100

There are no Ramachandran outliers to report.

5.3.2 Protein sidechains ⓘ

In the following table, the Percentiles column shows the percent sidechain outliers of the chain as a percentile score with respect to all X-ray entries followed by that with respect to entries of similar resolution.

The Analysed column shows the number of residues for which the sidechain conformation was analysed, and the total number of residues.

Mol	Chain	Analysed	Rotameric	Outliers	Percentiles	
1	A	230/239 (96%)	229 (100%)	1 (0%)	91	89
1	B	232/239 (97%)	230 (99%)	2 (1%)	78	75
1	C	232/239 (97%)	229 (99%)	3 (1%)	69	62
1	D	233/239 (98%)	230 (99%)	3 (1%)	69	62
All	All	927/956 (97%)	918 (99%)	9 (1%)	76	71

All (9) residues with a non-rotameric sidechain are listed below:

Mol	Chain	Res	Type
1	A	191	PHE
1	B	87	TYR
1	B	151	ARG
1	C	87	TYR
1	C	151	ARG
1	C	191	PHE
1	D	87	TYR
1	D	151	ARG
1	D	191	PHE

Some sidechains can be flipped to improve hydrogen bonding and reduce clashes. There are no such sidechains identified.

5.3.3 RNA ⓘ

There are no RNA molecules in this entry.

5.4 Non-standard residues in protein, DNA, RNA chains ⓘ

There are no non-standard protein/DNA/RNA residues in this entry.

5.5 Carbohydrates ⓘ

There are no monosaccharides in this entry.

5.6 Ligand geometry ⓘ

39 ligands are modelled in this entry.

In the following table, the Counts columns list the number of bonds (or angles) for which Mogul statistics could be retrieved, the number of bonds (or angles) that are observed in the model and the number of bonds (or angles) that are defined in the Chemical Component Dictionary. The Link column lists molecule types, if any, to which the group is linked. The Z score for a bond length (or angle) is the number of standard deviations the observed value is removed from the expected value. A bond length (or angle) with $|Z| > 2$ is considered an outlier worth inspection. RMSZ is the root-mean-square of all Z scores of the bond lengths (or angles).

Mol	Type	Chain	Res	Link	Bond lengths			Bond angles		
					Counts	RMSZ	$\# Z > 2$	Counts	RMSZ	$\# Z > 2$
5	GOL	D	407	-	5,5,5	0.85	0	5,5,5	0.98	0
4	EDO	D	403	-	3,3,3	0.47	0	2,2,2	0.29	0
2	D8F	D	401	1	16,17,17	2.89	3 (18%)	19,21,21	1.97	4 (21%)
4	EDO	C	402	-	3,3,3	0.43	0	2,2,2	0.46	0
7	PGE	C	410	-	9,9,9	0.51	0	8,8,8	0.24	0
5	GOL	B	404	-	5,5,5	0.88	0	5,5,5	1.08	0
4	EDO	A	407	-	3,3,3	0.47	0	2,2,2	0.30	0
4	EDO	A	403	-	3,3,3	0.52	0	2,2,2	0.29	0
4	EDO	D	404	-	3,3,3	0.52	0	2,2,2	0.26	0
4	EDO	A	405	-	3,3,3	0.43	0	2,2,2	0.36	0
5	GOL	C	407	-	5,5,5	0.84	0	5,5,5	1.04	0
5	GOL	C	406	-	5,5,5	0.86	0	5,5,5	1.14	1 (20%)
4	EDO	A	406	-	3,3,3	0.52	0	2,2,2	0.08	0
5	GOL	B	406	-	5,5,5	0.88	0	5,5,5	1.04	0
6	6NA	C	409	-	4,7,7	0.21	0	3,7,7	0.96	0
4	EDO	A	404	-	3,3,3	0.43	0	2,2,2	0.29	0
5	GOL	A	410	-	5,5,5	0.75	0	5,5,5	0.96	0
2	D8F	B	401	1	16,17,17	2.80	3 (18%)	19,21,21	1.40	3 (15%)
5	GOL	D	408	-	5,5,5	0.77	0	5,5,5	0.96	0
5	GOL	A	409	-	5,5,5	1.15	1 (20%)	5,5,5	1.08	0
4	EDO	B	403	-	3,3,3	0.48	0	2,2,2	0.37	0
4	EDO	B	402	-	3,3,3	0.68	0	2,2,2	0.16	0
5	GOL	B	405	-	5,5,5	0.97	0	5,5,5	1.07	1 (20%)
5	GOL	A	412	-	5,5,5	0.83	0	5,5,5	1.17	0
4	EDO	C	403	-	3,3,3	0.51	0	2,2,2	0.24	0
3	SO4	D	402	-	4,4,4	0.14	0	6,6,6	0.10	0
2	D8F	A	401	1	16,17,17	2.72	3 (18%)	19,21,21	1.84	5 (26%)
4	EDO	D	405	-	3,3,3	0.49	0	2,2,2	0.23	0
8	NPO	D	410	-	9,10,10	1.06	1 (11%)	11,13,13	0.38	0
5	GOL	C	408	-	5,5,5	0.89	0	5,5,5	1.05	0

Mol	Type	Chain	Res	Link	Bond lengths			Bond angles		
					Counts	RMSZ	# Z > 2	Counts	RMSZ	# Z > 2
5	GOL	A	408	-	5,5,5	0.86	0	5,5,5	1.37	1 (20%)
6	6NA	A	413	-	4,7,7	0.22	0	3,7,7	0.94	0
3	SO4	A	402	-	4,4,4	0.18	0	6,6,6	0.10	0
5	GOL	C	405	-	5,5,5	0.99	0	5,5,5	0.89	0
5	GOL	A	411	-	5,5,5	1.01	0	5,5,5	1.05	0
5	GOL	D	406	-	5,5,5	0.97	0	5,5,5	0.97	0
2	D8F	C	401	1	16,17,17	2.78	3 (18%)	19,21,21	1.47	4 (21%)
5	GOL	D	409	-	5,5,5	0.85	0	5,5,5	1.03	0
4	EDO	C	404	-	3,3,3	0.45	0	2,2,2	0.56	0

In the following table, the Chirals column lists the number of chiral outliers, the number of chiral centers analysed, the number of these observed in the model and the number defined in the Chemical Component Dictionary. Similar counts are reported in the Torsion and Rings columns. '-' means no outliers of that kind were identified.

Mol	Type	Chain	Res	Link	Chirals	Torsions	Rings
5	GOL	D	407	-	-	2/4/4/4	-
4	EDO	D	403	-	-	1/1/1/1	-
2	D8F	D	401	1	-	5/11/13/13	0/1/1/1
4	EDO	C	402	-	-	1/1/1/1	-
7	PGE	C	410	-	-	4/7/7/7	-
5	GOL	B	404	-	-	3/4/4/4	-
4	EDO	A	407	-	-	0/1/1/1	-
4	EDO	A	403	-	-	0/1/1/1	-
4	EDO	D	404	-	-	1/1/1/1	-
4	EDO	A	405	-	-	0/1/1/1	-
5	GOL	C	407	-	-	2/4/4/4	-
5	GOL	C	406	-	-	4/4/4/4	-
4	EDO	A	406	-	-	0/1/1/1	-
5	GOL	B	406	-	-	0/4/4/4	-
6	6NA	C	409	-	-	3/3/5/5	-
4	EDO	A	404	-	-	1/1/1/1	-
5	GOL	A	410	-	-	2/4/4/4	-
2	D8F	B	401	1	-	6/11/13/13	0/1/1/1
5	GOL	D	408	-	-	4/4/4/4	-
5	GOL	A	409	-	-	4/4/4/4	-
4	EDO	B	403	-	-	0/1/1/1	-
4	EDO	B	402	-	-	1/1/1/1	-
5	GOL	B	405	-	-	2/4/4/4	-

Continued on next page...

Continued from previous page...

Mol	Type	Chain	Res	Link	Chirals	Torsions	Rings
5	GOL	A	412	-	-	4/4/4/4	-
4	EDO	C	403	-	-	1/1/1/1	-
2	D8F	A	401	1	-	7/11/13/13	0/1/1/1
4	EDO	D	405	-	-	1/1/1/1	-
8	NPO	D	410	-	-	0/2/4/4	0/1/1/1
5	GOL	C	408	-	-	4/4/4/4	-
5	GOL	A	408	-	-	2/4/4/4	-
6	6NA	A	413	-	-	3/3/5/5	-
5	GOL	C	405	-	-	0/4/4/4	-
5	GOL	A	411	-	-	4/4/4/4	-
5	GOL	D	406	-	-	0/4/4/4	-
2	D8F	C	401	1	-	5/11/13/13	0/1/1/1
5	GOL	D	409	-	-	2/4/4/4	-
4	EDO	C	404	-	-	1/1/1/1	-

All (14) bond length outliers are listed below:

Mol	Chain	Res	Type	Atoms	Z	Observed(Å)	Ideal(Å)
2	D	401	D8F	OAD-NAE	10.68	1.40	1.22
2	B	401	D8F	OAD-NAE	10.11	1.40	1.22
2	C	401	D8F	OAD-NAE	9.98	1.39	1.22
2	A	401	D8F	OAD-NAE	9.72	1.39	1.22
2	C	401	D8F	OAA-CAK	3.80	1.47	1.35
2	A	401	D8F	OAA-CAK	3.73	1.46	1.35
2	B	401	D8F	OAA-CAK	3.54	1.46	1.35
2	D	401	D8F	OAA-CAK	3.04	1.44	1.35
8	D	410	NPO	O3-N1	-2.81	1.18	1.22
2	A	401	D8F	CAO-NAE	-2.54	1.39	1.45
2	D	401	D8F	CAO-NAE	-2.53	1.39	1.45
2	B	401	D8F	CAO-NAE	-2.39	1.39	1.45
2	C	401	D8F	CAO-NAE	-2.37	1.39	1.45
5	A	409	GOL	O2-C2	-2.19	1.36	1.43

All (19) bond angle outliers are listed below:

Mol	Chain	Res	Type	Atoms	Z	Observed(°)	Ideal(°)
2	A	401	D8F	OAA-CAK-CAI	5.00	125.12	110.67
2	D	401	D8F	CAQ-CAO-NAE	4.69	122.90	119.38
2	D	401	D8F	CAP-CAO-NAE	-4.60	115.92	119.38
2	C	401	D8F	OAA-CAK-CAI	3.75	121.50	110.67

Continued on next page...

Continued from previous page...

Mol	Chain	Res	Type	Atoms	Z	Observed(°)	Ideal(°)
2	B	401	D8F	CAP-CAO-NAE	3.34	121.89	119.38
2	A	401	D8F	OAA-CAK-OAB	-3.15	116.81	122.84
2	B	401	D8F	OAA-CAK-CAI	3.10	119.62	110.67
2	A	401	D8F	CAL-OAA-CAK	2.80	126.73	119.42
2	C	401	D8F	CAP-CAO-NAE	2.79	121.48	119.38
5	A	408	GOL	C3-C2-C1	-2.71	101.16	111.70
2	C	401	D8F	OAA-CAK-OAB	-2.69	117.69	122.84
2	D	401	D8F	OAA-CAK-CAI	2.65	118.32	110.67
2	D	401	D8F	CAL-OAA-CAK	2.30	125.42	119.42
2	B	401	D8F	CAQ-CAO-NAE	-2.20	117.72	119.38
2	A	401	D8F	CAP-CAM-CAL	2.19	122.41	119.73
5	C	406	GOL	C3-C2-C1	-2.19	103.19	111.70
2	C	401	D8F	CAP-CAM-CAL	2.16	122.37	119.73
2	A	401	D8F	OAA-CAL-CAM	2.13	125.06	119.11
5	B	405	GOL	C3-C2-C1	-2.04	103.78	111.70

There are no chirality outliers.

All (80) torsion outliers are listed below:

Mol	Chain	Res	Type	Atoms
5	D	407	GOL	O1-C1-C2-C3
2	D	401	D8F	CAI-CAK-OAA-CAL
5	C	407	GOL	C1-C2-C3-O3
5	C	406	GOL	O1-C1-C2-O2
5	C	406	GOL	O1-C1-C2-C3
6	C	409	6NA	C-CA-CB-CG
5	A	410	GOL	O1-C1-C2-C3
2	B	401	D8F	CAI-CAK-OAA-CAL
2	B	401	D8F	OAB-CAK-OAA-CAL
5	D	408	GOL	O1-C1-C2-C3
5	D	408	GOL	C1-C2-C3-O3
5	A	409	GOL	C1-C2-C3-O3
5	A	412	GOL	O1-C1-C2-C3
5	A	412	GOL	C1-C2-C3-O3
2	A	401	D8F	OAB-CAK-OAA-CAL
5	C	408	GOL	C1-C2-C3-O3
5	A	408	GOL	O1-C1-C2-O2
5	A	408	GOL	O1-C1-C2-C3
6	A	413	6NA	C-CA-CB-CG
5	A	411	GOL	O1-C1-C2-C3
2	C	401	D8F	CAI-CAK-OAA-CAL
2	C	401	D8F	OAB-CAK-OAA-CAL

Continued on next page...

Continued from previous page...

Mol	Chain	Res	Type	Atoms
5	D	409	GOL	O1-C1-C2-C3
2	D	401	D8F	CAH-CAF-CAG-CAI
7	C	410	PGE	O2-C3-C4-O3
2	D	401	D8F	OAB-CAK-OAA-CAL
2	A	401	D8F	CAI-CAK-OAA-CAL
5	D	407	GOL	O1-C1-C2-O2
5	A	412	GOL	O1-C1-C2-O2
2	B	401	D8F	CAH-CAF-CAG-CAI
5	C	406	GOL	C1-C2-C3-O3
5	A	409	GOL	O1-C1-C2-C3
5	B	405	GOL	C1-C2-C3-O3
5	A	411	GOL	C1-C2-C3-O3
5	C	407	GOL	O2-C2-C3-O3
5	A	410	GOL	O1-C1-C2-O2
5	D	408	GOL	O1-C1-C2-O2
5	A	409	GOL	O2-C2-C3-O3
5	B	405	GOL	O2-C2-C3-O3
6	A	413	6NA	CA-CB-CG-CD
7	C	410	PGE	C6-C5-O3-C4
4	D	403	EDO	O1-C1-C2-O2
4	D	404	EDO	O1-C1-C2-O2
4	A	404	EDO	O1-C1-C2-O2
4	C	403	EDO	O1-C1-C2-O2
6	C	409	6NA	CA-CB-CG-CD
2	A	401	D8F	CAN-CAL-OAA-CAK
2	C	401	D8F	CAH-CAF-CAG-CAI
2	A	401	D8F	CAM-CAL-OAA-CAK
2	C	401	D8F	CAM-CAL-OAA-CAK
5	D	408	GOL	O2-C2-C3-O3
5	A	409	GOL	O1-C1-C2-O2
5	C	408	GOL	O2-C2-C3-O3
5	A	411	GOL	O1-C1-C2-O2
2	C	401	D8F	CAN-CAL-OAA-CAK
6	C	409	6NA	C6-CD-CG-CB
2	A	401	D8F	CAG-CAF-CAH-CAJ
6	A	413	6NA	C6-CD-CG-CB
5	B	404	GOL	O1-C1-C2-C3
5	C	406	GOL	O2-C2-C3-O3
5	A	412	GOL	O2-C2-C3-O3
4	C	402	EDO	O1-C1-C2-O2
2	B	401	D8F	CAM-CAL-OAA-CAK
5	B	404	GOL	O2-C2-C3-O3

Continued on next page...

Continued from previous page...

Mol	Chain	Res	Type	Atoms
5	C	408	GOL	O1-C1-C2-O2
5	A	411	GOL	O2-C2-C3-O3
2	B	401	D8F	CAN-CAL-OAA-CAK
5	D	409	GOL	O1-C1-C2-O2
7	C	410	PGE	O3-C5-C6-O4
4	D	405	EDO	O1-C1-C2-O2
2	D	401	D8F	CAF-CAG-CAI-CAK
2	B	401	D8F	CAG-CAF-CAH-CAJ
4	C	404	EDO	O1-C1-C2-O2
5	B	404	GOL	C1-C2-C3-O3
5	C	408	GOL	O1-C1-C2-C3
2	A	401	D8F	CAG-CAI-CAK-OAA
7	C	410	PGE	C4-C3-O2-C2
2	A	401	D8F	CAG-CAI-CAK-OAB
4	B	402	EDO	O1-C1-C2-O2
2	D	401	D8F	CAN-CAL-OAA-CAK

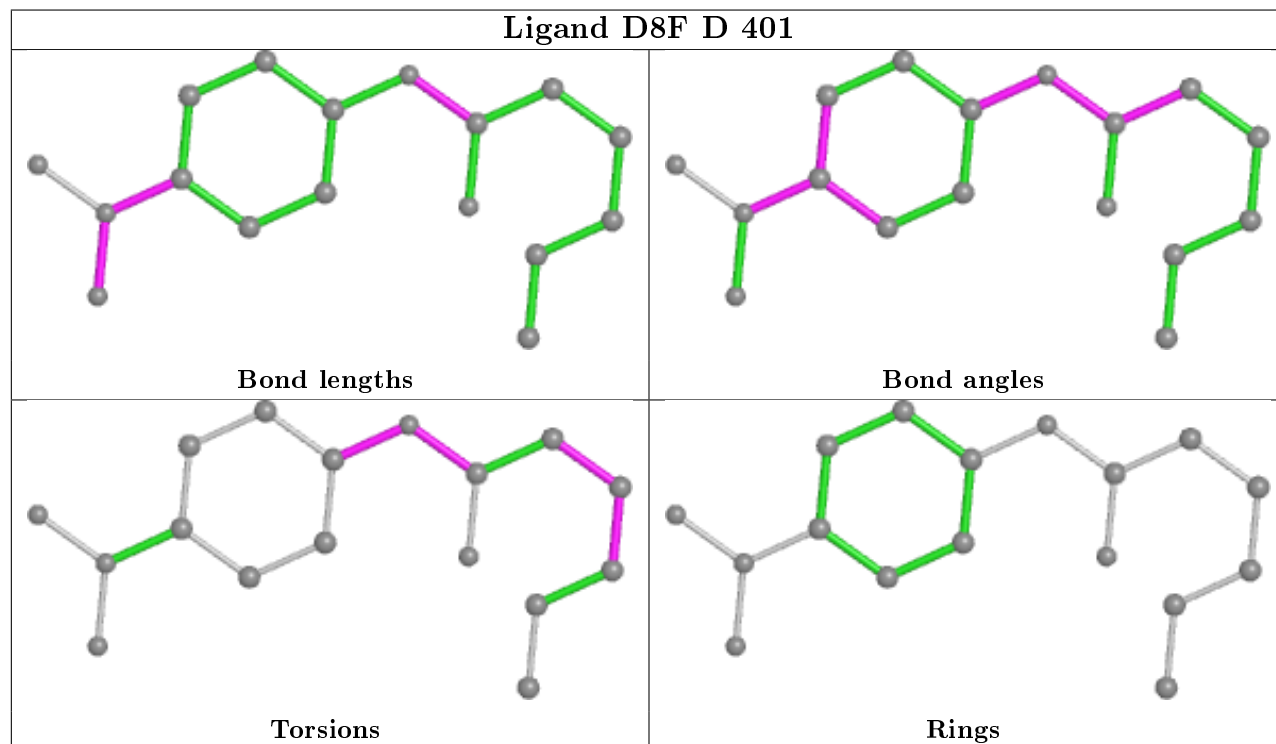
There are no ring outliers.

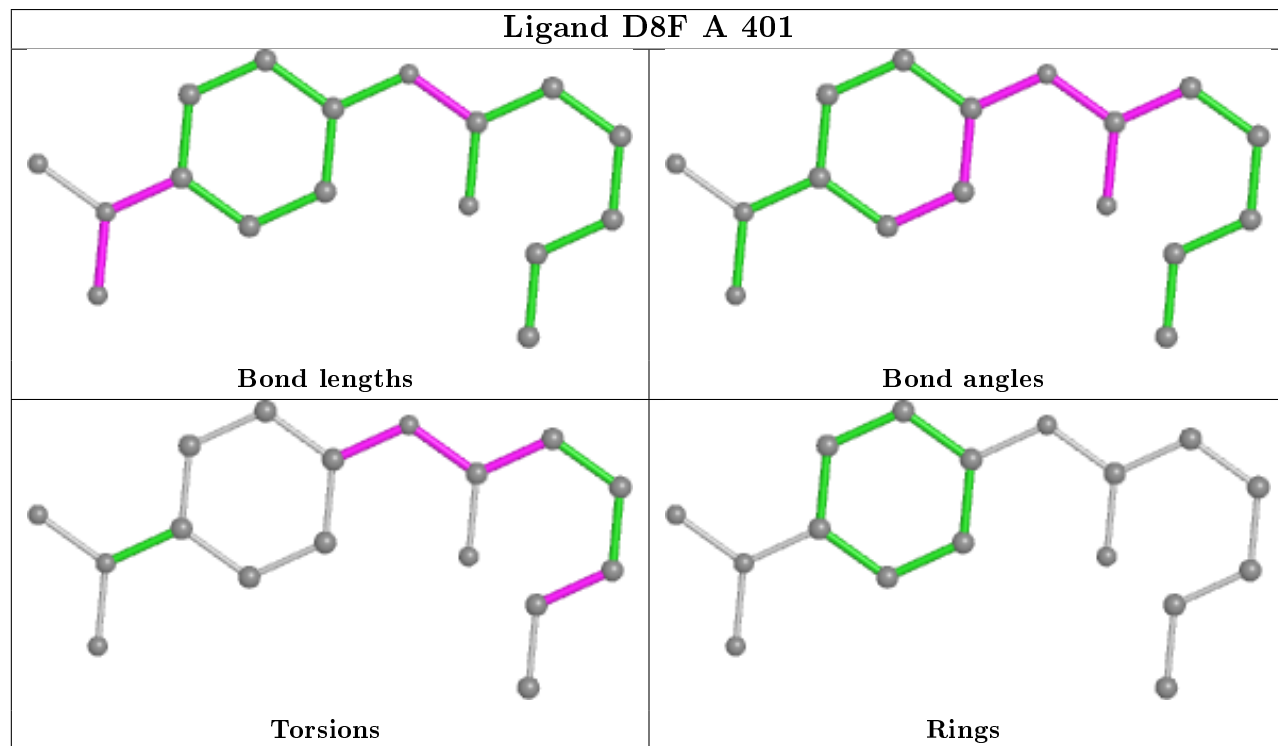
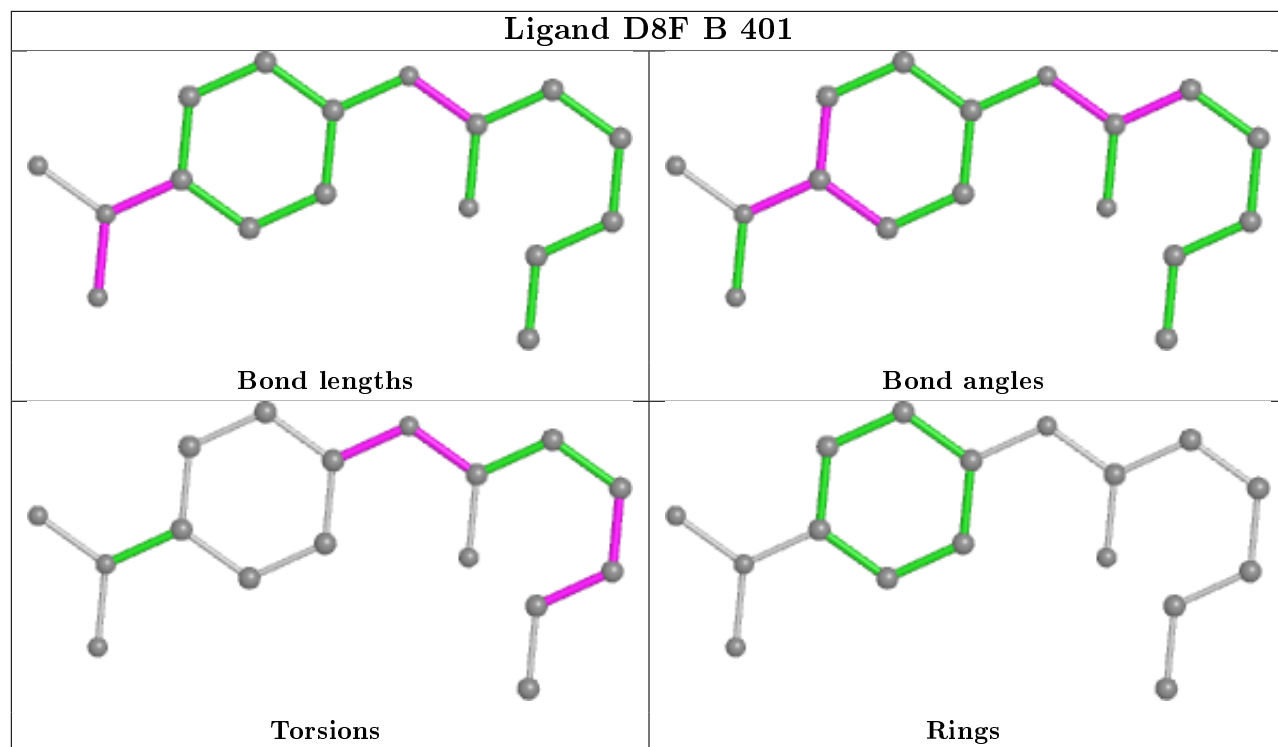
18 monomers are involved in 37 short contacts:

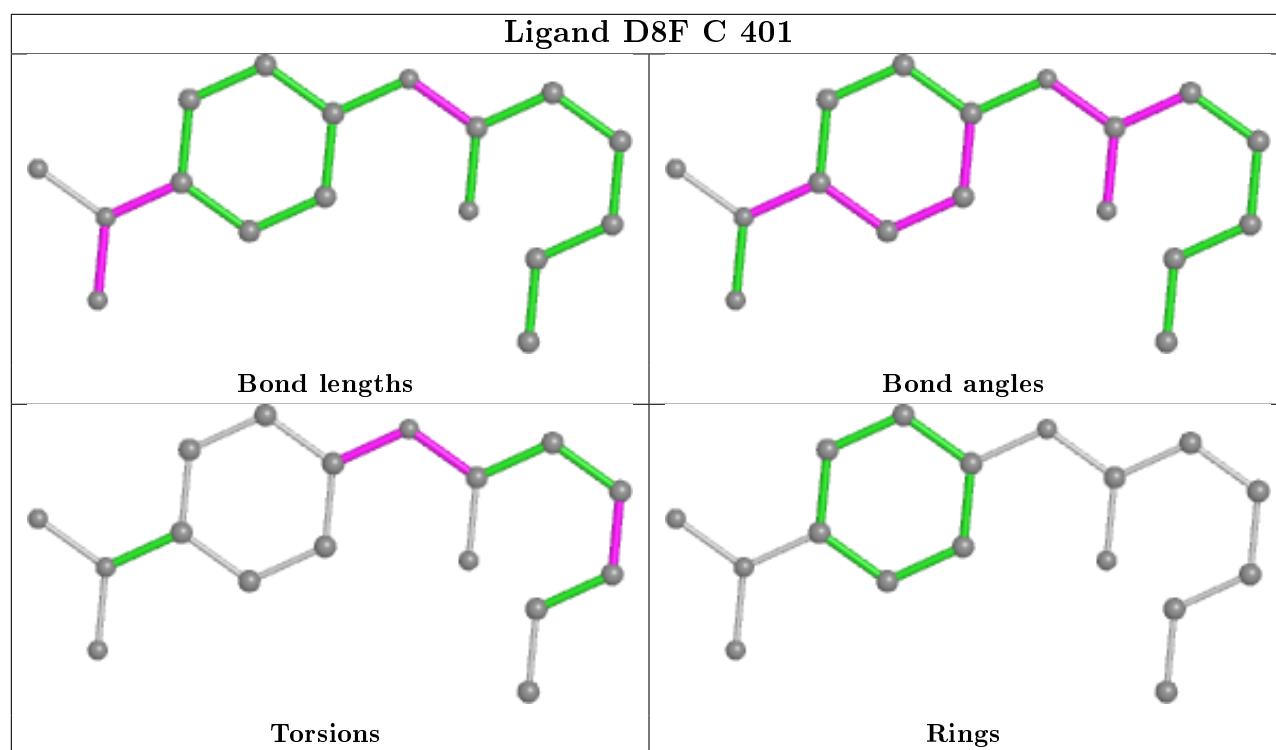
Mol	Chain	Res	Type	Clashes	Symm-Clashes
5	D	407	GOL	2	0
4	D	403	EDO	2	0
2	D	401	D8F	1	0
5	B	404	GOL	4	0
5	C	407	GOL	1	0
5	C	406	GOL	3	0
4	A	406	EDO	1	0
6	C	409	6NA	1	0
2	B	401	D8F	3	0
5	A	409	GOL	1	0
4	B	402	EDO	1	0
5	B	405	GOL	4	0
5	A	412	GOL	2	0
2	A	401	D8F	5	0
5	C	408	GOL	1	0
5	A	408	GOL	2	0
2	C	401	D8F	4	0
4	C	404	EDO	1	0

The following is a two-dimensional graphical depiction of Mogul quality analysis of bond lengths, bond angles, torsion angles, and ring geometry for all instances of the Ligand of Interest. In

addition, ligands with molecular weight > 250 and outliers as shown on the validation Tables will also be included. For torsion angles, if less than 5% of the Mogul distribution of torsion angles is within 10 degrees of the torsion angle in question, then that torsion angle is considered an outlier. Any bond that is central to one or more torsion angles identified as an outlier by Mogul will be highlighted in the graph. For rings, the root-mean-square deviation (RMSD) between the ring in question and similar rings identified by Mogul is calculated over all ring torsion angles. If the average RMSD is greater than 60 degrees and the minimal RMSD between the ring in question and any Mogul-identified rings is also greater than 60 degrees, then that ring is considered an outlier. The outliers are highlighted in purple. The color gray indicates Mogul did not find sufficient equivalents in the CSD to analyse the geometry.







5.7 Other polymers [i](#)

There are no such residues in this entry.

5.8 Polymer linkage issues [i](#)

There are no chain breaks in this entry.

6 Fit of model and data ⓘ

6.1 Protein, DNA and RNA chains ⓘ

In the following table, the column labelled ‘#RSRZ> 2’ contains the number (and percentage) of RSRZ outliers, followed by percent RSRZ outliers for the chain as percentile scores relative to all X-ray entries and entries of similar resolution. The OWAB column contains the minimum, median, 95th percentile and maximum values of the occupancy-weighted average B-factor per residue. The column labelled ‘Q< 0.9’ lists the number of (and percentage) of residues with an average occupancy less than 0.9.

Mol	Chain	Analysed	<RSRZ>	#RSRZ>2	OWAB(Å ²)	Q<0.9
1	A	309/314 (98%)	-0.31	2 (0%) 89 87	16, 22, 36, 52	0
1	B	309/314 (98%)	-0.12	7 (2%) 60 56	18, 27, 43, 59	0
1	C	309/314 (98%)	-0.32	3 (0%) 82 80	16, 23, 36, 56	0
1	D	309/314 (98%)	-0.31	1 (0%) 94 92	19, 27, 41, 53	0
All	All	1236/1256 (98%)	-0.26	13 (1%) 80 78	16, 25, 41, 59	0

All (13) RSRZ outliers are listed below:

Mol	Chain	Res	Type	RSRZ
1	B	27	ALA	4.7
1	A	4	THR	3.3
1	C	147	SER	3.1
1	D	27	ALA	2.7
1	A	77	SER	2.7
1	B	28	GLU	2.5
1	B	226	ALA	2.5
1	B	219	PHE	2.4
1	B	22	ALA	2.3
1	B	30	THR	2.3
1	C	4	THR	2.1
1	B	31	LEU	2.0
1	C	79	GLU	2.0

6.2 Non-standard residues in protein, DNA, RNA chains ⓘ

There are no non-standard protein/DNA/RNA residues in this entry.

6.3 Carbohydrates ⓘ

There are no monosaccharides in this entry.

6.4 Ligands ⓘ

In the following table, the Atoms column lists the number of modelled atoms in the group and the number defined in the chemical component dictionary. The B-factors column lists the minimum, median, 95th percentile and maximum values of B factors of atoms in the group. The column labelled 'Q< 0.9' lists the number of atoms with occupancy less than 0.9.

Mol	Type	Chain	Res	Atoms	RSCC	RSR	B-factors(Å ²)	Q<0.9
4	EDO	B	402	4/4	0.67	0.26	33,47,47,55	0
4	EDO	A	407	4/4	0.73	0.41	46,54,57,57	0
4	EDO	C	403	4/4	0.74	0.23	44,50,51,52	0
2	D8F	D	401	17/17	0.76	0.23	32,48,59,68	0
6	6NA	A	413	8/8	0.76	0.20	28,37,41,43	0
6	6NA	C	409	8/8	0.77	0.20	28,36,41,44	0
4	EDO	C	404	4/4	0.78	0.25	35,39,39,49	0
2	D8F	A	401	17/17	0.80	0.19	24,39,55,68	0
8	NPO	D	410	10/10	0.80	0.34	61,74,78,80	0
5	GOL	B	405	6/6	0.80	0.20	34,42,50,52	0
3	SO4	D	402	5/5	0.80	0.40	75,76,94,99	0
5	GOL	D	409	6/6	0.81	0.26	45,52,56,58	0
2	D8F	C	401	17/17	0.81	0.19	27,40,59,68	0
5	GOL	A	408	6/6	0.82	0.18	32,35,40,45	0
5	GOL	A	409	6/6	0.84	0.27	36,41,48,58	0
5	GOL	C	408	6/6	0.85	0.23	41,43,47,48	0
5	GOL	A	412	6/6	0.85	0.31	33,37,46,51	0
2	D8F	B	401	17/17	0.85	0.21	32,46,55,68	0
4	EDO	A	406	4/4	0.85	0.21	38,43,51,55	0
7	PGE	C	410	10/10	0.85	0.25	40,53,66,67	0
5	GOL	A	410	6/6	0.85	0.20	41,48,51,54	0
5	GOL	B	404	6/6	0.86	0.28	41,49,53,58	0
5	GOL	A	411	6/6	0.87	0.21	33,47,47,47	0
5	GOL	D	407	6/6	0.87	0.20	36,41,49,51	0
4	EDO	D	403	4/4	0.88	0.26	37,38,47,56	0
5	GOL	C	407	6/6	0.88	0.25	42,47,53,55	0
5	GOL	D	406	6/6	0.89	0.15	39,44,48,51	0
4	EDO	D	405	4/4	0.89	0.16	41,43,48,50	0
4	EDO	C	402	4/4	0.89	0.19	36,45,46,50	0
5	GOL	C	406	6/6	0.89	0.29	32,42,48,51	0
3	SO4	A	402	5/5	0.90	0.30	49,52,72,72	0
5	GOL	D	408	6/6	0.90	0.24	43,49,54,55	0

Continued on next page...

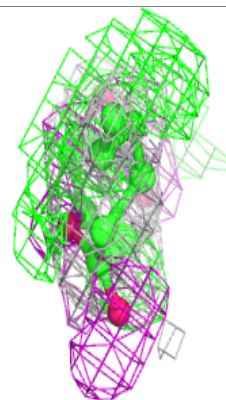
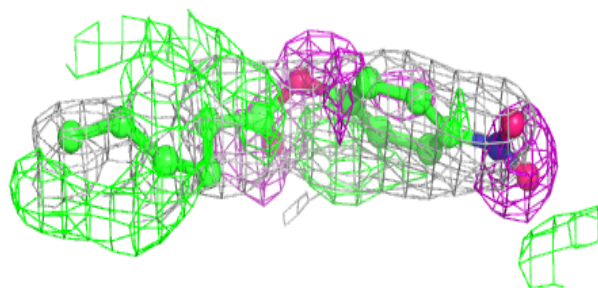
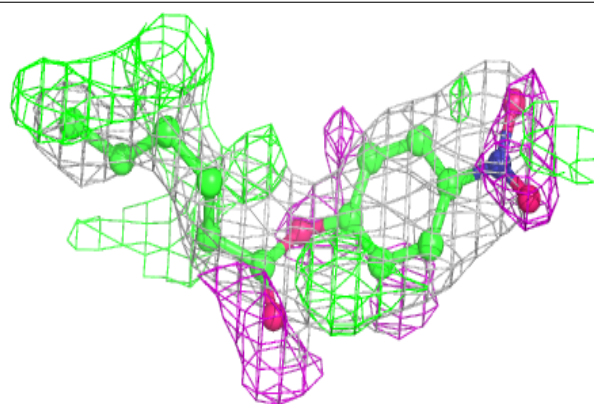
Continued from previous page...

Mol	Type	Chain	Res	Atoms	RSCC	RSR	B-factors(\AA^2)	Q<0.9
4	EDO	B	403	4/4	0.91	0.25	37,38,49,62	0
4	EDO	D	404	4/4	0.91	0.24	37,44,47,48	0
5	GOL	B	406	6/6	0.92	0.37	41,44,49,53	0
4	EDO	A	403	4/4	0.93	0.21	36,37,41,49	0
4	EDO	A	405	4/4	0.94	0.14	34,36,41,47	0
5	GOL	C	405	6/6	0.95	0.12	30,33,35,40	0
4	EDO	A	404	4/4	0.95	0.18	32,36,40,48	0

The following is a graphical depiction of the model fit to experimental electron density of all instances of the Ligand of Interest. In addition, ligands with molecular weight > 250 and outliers as shown on the geometry validation Tables will also be included. Each fit is shown from different orientation to approximate a three-dimensional view.

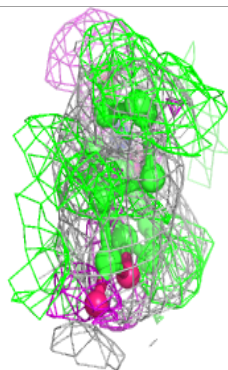
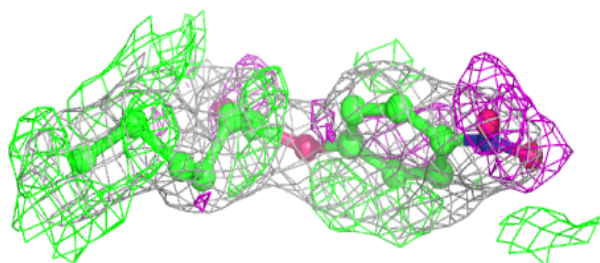
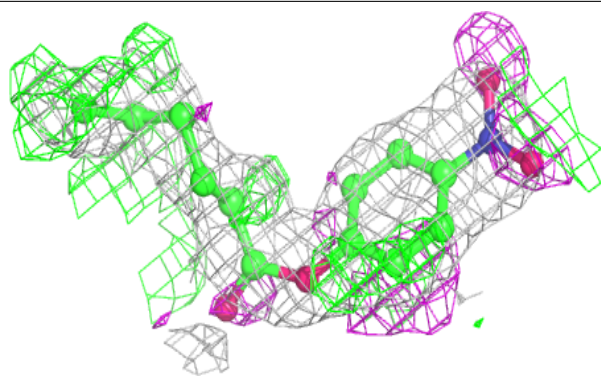
Electron density around D8F D 401:

2mF_o-DF_c (at 0.7 rmsd) in gray
mF_o-DF_c (at 3 rmsd) in purple (negative)
and green (positive)

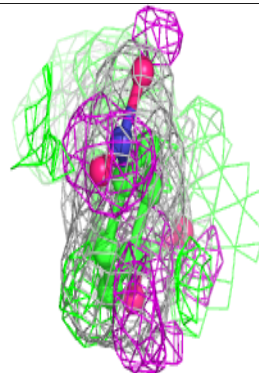
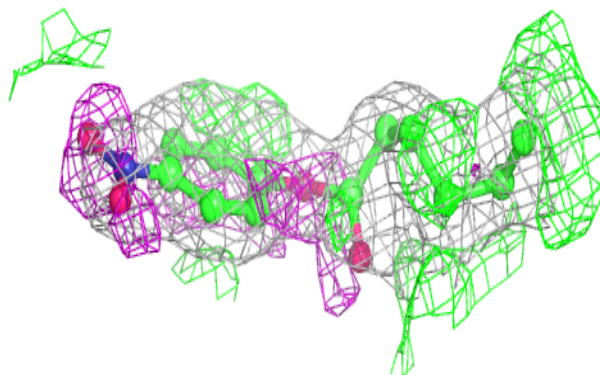
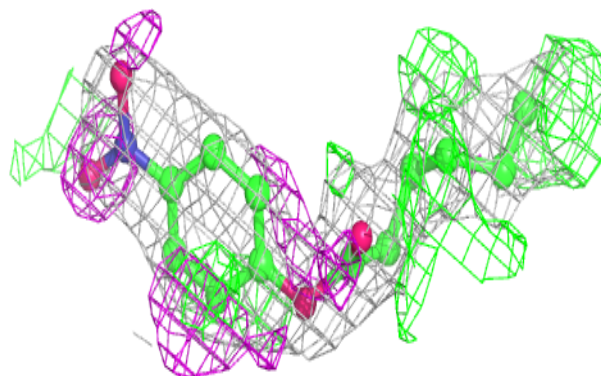


Electron density around D8F A 401:

$2mF_o-DF_c$ (at 0.7 rmsd) in gray
 mF_o-DF_c (at 3 rmsd) in purple (negative)
and green (positive)

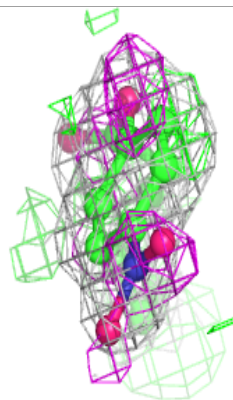
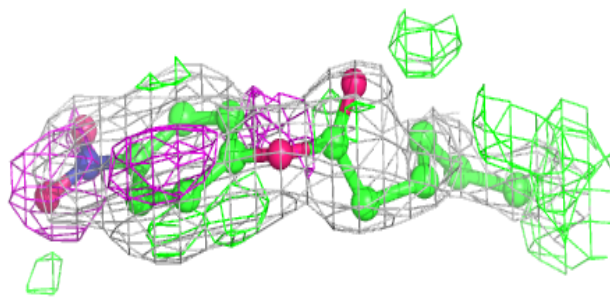
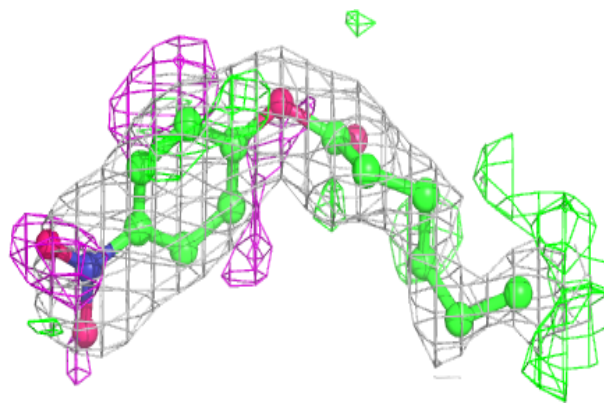
**Electron density around D8F C 401:**

$2mF_o-DF_c$ (at 0.7 rmsd) in gray
 mF_o-DF_c (at 3 rmsd) in purple (negative)
and green (positive)



Electron density around D8F B 401:

$2mF_o - DF_c$ (at 0.7 rmsd) in gray
 $mF_o - DF_c$ (at 3 rmsd) in purple (negative)
and green (positive)



6.5 Other polymers [i](#)

There are no such residues in this entry.