



Full wwPDB X-ray Structure Validation Report ⓘ

May 13, 2020 – 09:39 pm BST

PDB ID : 5KGH
Title : X-ray structure of a glucosamine N-Acetyltransferase from *Clostridium acetobutylicum*, mutant Y297F
Authors : Dopkins, B.J.; Thoden, J.B.; Tipton, P.A.; Holden, H.M.
Deposited on : 2016-06-13
Resolution : 1.80 Å(reported)

This is a Full wwPDB X-ray Structure Validation Report for a publicly released PDB entry.

We welcome your comments at validation@mail.wwpdb.org

A user guide is available at

<https://www.wwpdb.org/validation/2017/XrayValidationReportHelp>

with specific help available everywhere you see the ⓘ symbol.

The following versions of software and data (see [references ⓘ](#)) were used in the production of this report:

MolProbity : 4.02b-467
Mogul : 1.8.5 (274361), CSD as541be (2020)
Xtriage (Phenix) : 1.13
EDS : 2.11
buster-report : 1.1.7 (2018)
Percentile statistics : 20191225.v01 (using entries in the PDB archive December 25th 2019)
Refmac : 5.8.0158
CCP4 : 7.0.044 (Gargrove)
Ideal geometry (proteins) : Engh & Huber (2001)
Ideal geometry (DNA, RNA) : Parkinson et al. (1996)
Validation Pipeline (wwPDB-VP) : 2.11

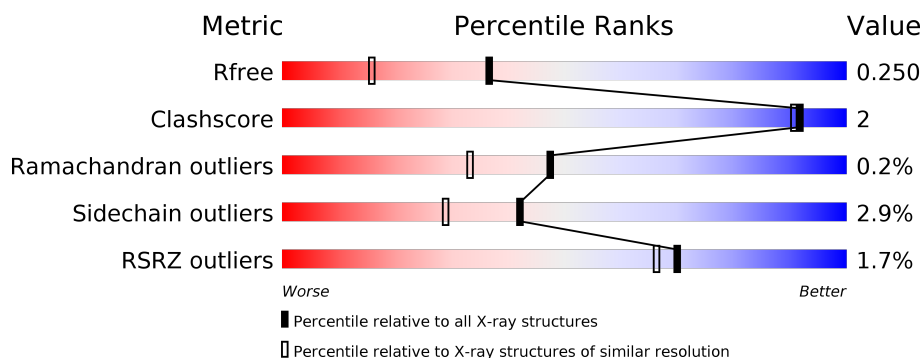
1 Overall quality at a glance

The following experimental techniques were used to determine the structure:

X-RAY DIFFRACTION

The reported resolution of this entry is 1.80 Å.

Percentile scores (ranging between 0-100) for global validation metrics of the entry are shown in the following graphic. The table shows the number of entries on which the scores are based.



Metric	Whole archive (#Entries)	Similar resolution (#Entries, resolution range(Å))
R_{free}	130704	5950 (1.80-1.80)
Clashscore	141614	6793 (1.80-1.80)
Ramachandran outliers	138981	6697 (1.80-1.80)
Sidechain outliers	138945	6696 (1.80-1.80)
RSRZ outliers	127900	5850 (1.80-1.80)

The table below summarises the geometric issues observed across the polymeric chains and their fit to the electron density. The red, orange, yellow and green segments on the lower bar indicate the fraction of residues that contain outliers for ≥ 3 , 2, 1 and 0 types of geometric quality criteria respectively. A grey segment represents the fraction of residues that are not modelled. The numeric value for each fraction is indicated below the corresponding segment, with a dot representing fractions $\leq 5\%$. The upper red bar (where present) indicates the fraction of residues that have poor fit to the electron density. The numeric value is given above the bar.

Mol	Chain	Length	Quality of chain
1	A	328	<div> <div>3%</div> <div> <div></div> <div>89%</div> <div>7%</div> <div>•</div> </div> </div>
1	B	328	<div> <div>%</div> <div> <div></div> <div>90%</div> <div>• • 5%</div> </div> </div>

2 Entry composition

There are 5 unique types of molecules in this entry. The entry contains 5789 atoms, of which 0 are hydrogens and 0 are deuteriums.

In the tables below, the ZeroOcc column contains the number of atoms modelled with zero occupancy, the AltConf column contains the number of residues with at least one atom in alternate conformation and the Trace column contains the number of residues modelled with at most 2 atoms.

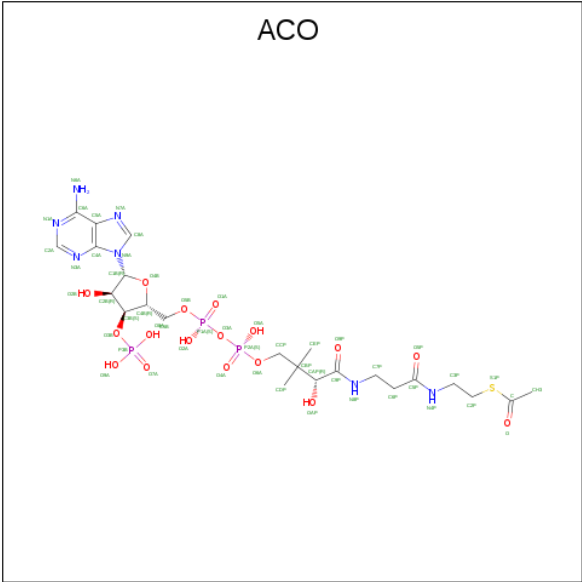
- Molecule 1 is a protein called Predicted acetyltransferase.

Mol	Chain	Residues	Atoms					ZeroOcc	AltConf	Trace
1	A	316	Total	C	N	O	S	0	0	0
			2610	1714	428	458	10			
1	B	313	Total	C	N	O	S	0	2	0
			2595	1703	425	457	10			

There are 18 discrepancies between the modelled and reference sequences:

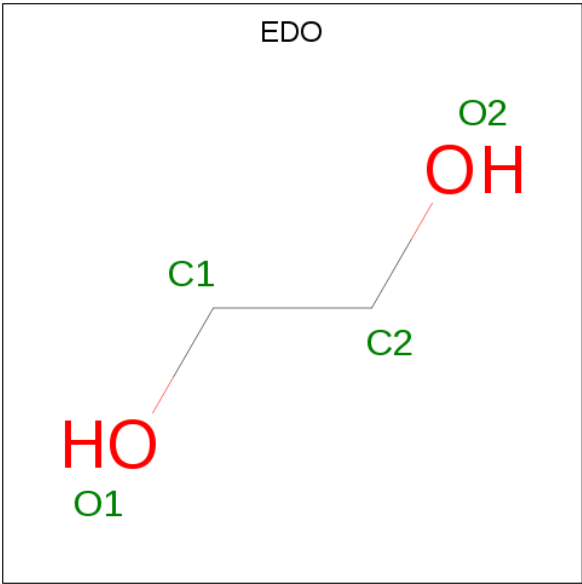
Chain	Residue	Modelled	Actual	Comment	Reference
A	297	PHE	TYR	engineered mutation	UNP Q97ML2
A	321	GLY	-	expression tag	UNP Q97ML2
A	322	GLY	-	expression tag	UNP Q97ML2
A	323	HIS	-	expression tag	UNP Q97ML2
A	324	HIS	-	expression tag	UNP Q97ML2
A	325	HIS	-	expression tag	UNP Q97ML2
A	326	HIS	-	expression tag	UNP Q97ML2
A	327	HIS	-	expression tag	UNP Q97ML2
A	328	HIS	-	expression tag	UNP Q97ML2
B	297	PHE	TYR	engineered mutation	UNP Q97ML2
B	321	GLY	-	expression tag	UNP Q97ML2
B	322	GLY	-	expression tag	UNP Q97ML2
B	323	HIS	-	expression tag	UNP Q97ML2
B	324	HIS	-	expression tag	UNP Q97ML2
B	325	HIS	-	expression tag	UNP Q97ML2
B	326	HIS	-	expression tag	UNP Q97ML2
B	327	HIS	-	expression tag	UNP Q97ML2
B	328	HIS	-	expression tag	UNP Q97ML2

- Molecule 2 is ACETYL COENZYME *A (three-letter code: ACO) (formula: C₂₃H₃₈N₇O₁₇P₃S).



Mol	Chain	Residues	Atoms						ZeroOcc	AltConf
2	A	1	Total	C	N	O	P	S	0	0
			51	23	7	17	3	1		
2	A	1	Total	C	N	O	P	S	0	0
			29	13	2	11	2	1		
2	B	1	Total	C	N	O	P	S	0	0
			51	23	7	17	3	1		
2	B	1	Total	C	N	O	P	S	0	0
			29	13	2	11	2	1		

- Molecule 3 is 1,2-ETHANEDIOL (three-letter code: EDO) (formula: C₂H₆O₂).




Mol	Chain	Residues	Atoms	ZeroOcc	AltConf
3	A	1	Total C O 4 2 2	0	0

- Molecule 4 is CHLORIDE ION (three-letter code: CL) (formula: Cl).

Mol	Chain	Residues	Atoms	ZeroOcc	AltConf
4	B	1	Total Cl 1 1	0	0

- Molecule 5 is water.

Mol	Chain	Residues	Atoms	ZeroOcc	AltConf
5	A	175	Total O 175 175	0	0
5	B	244	Total O 244 244	0	0

Chain B: 

4 Data and refinement statistics

Property	Value	Source
Space group	P 1 21 1	Depositor
Cell constants a, b, c, α , β , γ	64.29Å 65.94Å 90.45Å 90.00° 106.57° 90.00°	Depositor
Resolution (Å)	50.00 – 1.80 29.61 – 1.80	Depositor EDS
% Data completeness (in resolution range)	98.1 (50.00-1.80) 98.1 (29.61-1.80)	Depositor EDS
R_{merge}	0.08	Depositor
R_{sym}	0.08	Depositor
$\langle I/\sigma(I) \rangle$ ¹	1.87 (at 1.80Å)	Xtriage
Refinement program	REFMAC 5.8.0124	Depositor
R, R_{free}	0.205 , 0.249 0.211 , 0.250	Depositor DCC
R_{free} test set	3346 reflections (5.07%)	wwPDB-VP
Wilson B-factor (Å ²)	18.3	Xtriage
Anisotropy	0.131	Xtriage
Bulk solvent k_{sol} (e/Å ³), B_{sol} (Å ²)	0.34 , 47.3	EDS
L-test for twinning ²	$\langle L \rangle = 0.47$, $\langle L^2 \rangle = 0.30$	Xtriage
Estimated twinning fraction	No twinning to report.	Xtriage
F_o, F_c correlation	0.94	EDS
Total number of atoms	5789	wwPDB-VP
Average B, all atoms (Å ²)	26.0	wwPDB-VP

Xtriage's analysis on translational NCS is as follows: *The largest off-origin peak in the Patterson function is 5.66% of the height of the origin peak. No significant pseudotranslation is detected.*

¹Intensities estimated from amplitudes.

²Theoretical values of $\langle |L| \rangle$, $\langle L^2 \rangle$ for acentric reflections are 0.5, 0.333 respectively for untwinned datasets, and 0.375, 0.2 for perfectly twinned datasets.

5 Model quality [i](#)

5.1 Standard geometry [i](#)

Bond lengths and bond angles in the following residue types are not validated in this section: ACO, EDO, CL

The Z score for a bond length (or angle) is the number of standard deviations the observed value is removed from the expected value. A bond length (or angle) with $|Z| > 5$ is considered an outlier worth inspection. RMSZ is the root-mean-square of all Z scores of the bond lengths (or angles).

Mol	Chain	Bond lengths		Bond angles	
		RMSZ	$\# Z > 5$	RMSZ	$\# Z > 5$
1	A	0.42	0/2678	0.80	0/3599
1	B	0.50	0/2667	0.88	3/3583 (0.1%)
All	All	0.46	0/5345	0.84	3/7182 (0.0%)

There are no bond length outliers.

All (3) bond angle outliers are listed below:

Mol	Chain	Res	Type	Atoms	Z	Observed(°)	Ideal(°)
1	B	178	ARG	NE-CZ-NH2	-5.75	117.42	120.30
1	B	153	ASP	CB-CG-OD1	5.73	123.45	118.30
1	B	299	ARG	NE-CZ-NH1	5.02	122.81	120.30

There are no chirality outliers.

There are no planarity outliers.

5.2 Too-close contacts [i](#)

In the following table, the Non-H and H(model) columns list the number of non-hydrogen atoms and hydrogen atoms in the chain respectively. The H(added) column lists the number of hydrogen atoms added and optimized by MolProbity. The Clashes column lists the number of clashes within the asymmetric unit, whereas Symm-Clashes lists symmetry related clashes.

Mol	Chain	Non-H	H(model)	H(added)	Clashes	Symm-Clashes
1	A	2610	0	2629	10	0
1	B	2595	0	2604	7	0
2	A	80	0	54	0	0
2	B	80	0	57	0	0
3	A	4	0	6	0	0
4	B	1	0	0	0	0

Continued on next page...

Continued from previous page...

Mol	Chain	Non-H	H(model)	H(added)	Clashes	Symm-Clashes
5	A	175	0	0	1	0
5	B	244	0	0	3	1
All	All	5789	0	5350	17	1

The all-atom clashscore is defined as the number of clashes found per 1000 atoms (including hydrogen atoms). The all-atom clashscore for this structure is 2.

All (17) close contacts within the same asymmetric unit are listed below, sorted by their clash magnitude.

Atom-1	Atom-2	Interatomic distance (Å)	Clash overlap (Å)
1:B:292[B]:ASP:OD1	5:B:501:HOH:O	1.99	0.79
1:A:164:ILE:HD12	1:A:267:LEU:HD21	1.75	0.68
1:B:292[B]:ASP:OD1	5:B:502:HOH:O	2.16	0.60
1:A:299:ARG:HB3	1:A:299:ARG:HH11	1.70	0.56
1:A:165:LYS:NZ	1:A:262:GLN:OE1	2.40	0.54
1:B:240:LYS:HD2	1:B:247:TYR:CZ	2.43	0.54
1:A:97:LEU:HD23	1:A:139:ARG:CD	2.42	0.49
1:A:283:LYS:NZ	5:A:505:HOH:O	2.36	0.48
1:A:275:ILE:O	1:A:279:ARG:HG3	2.14	0.47
1:A:97:LEU:HD23	1:A:139:ARG:HD3	1.99	0.45
1:A:158:ASP:OD1	1:A:277:LYS:NZ	2.50	0.44
1:A:205:MET:SD	1:A:224:HIS:CE1	3.12	0.42
1:B:65:LYS:NZ	5:B:512:HOH:O	2.50	0.42
1:B:43:LYS:HG3	1:B:44:ILE:N	2.35	0.42
1:A:175:PRO:HA	1:A:207:GLU:OE2	2.21	0.41
1:B:215:TYR:CE2	1:B:216:LYS:HD3	2.56	0.41
1:B:205:MET:SD	1:B:224:HIS:CE1	3.14	0.40

All (1) symmetry-related close contacts are listed below. The label for Atom-2 includes the symmetry operator and encoded unit-cell translations to be applied.

Atom-1	Atom-2	Interatomic distance (Å)	Clash overlap (Å)
5:B:504:HOH:O	5:B:716:HOH:O[1_455]	2.08	0.12

5.3 Torsion angles [i](#)

5.3.1 Protein backbone [i](#)

In the following table, the Percentiles column shows the percent Ramachandran outliers of the chain as a percentile score with respect to all X-ray entries followed by that with respect to entries of similar resolution.

The Analysed column shows the number of residues for which the backbone conformation was analysed, and the total number of residues.

Mol	Chain	Analysed	Favoured	Allowed	Outliers	Percentiles	
1	A	314/328 (96%)	306 (98%)	7 (2%)	1 (0%)	41	27
1	B	311/328 (95%)	304 (98%)	7 (2%)	0	100	100
All	All	625/656 (95%)	610 (98%)	14 (2%)	1 (0%)	47	33

All (1) Ramachandran outliers are listed below:

Mol	Chain	Res	Type
1	A	216	LYS

5.3.2 Protein sidechains [i](#)

In the following table, the Percentiles column shows the percent sidechain outliers of the chain as a percentile score with respect to all X-ray entries followed by that with respect to entries of similar resolution.

The Analysed column shows the number of residues for which the sidechain conformation was analysed, and the total number of residues.

Mol	Chain	Analysed	Rotameric	Outliers	Percentiles	
1	A	281/291 (97%)	272 (97%)	9 (3%)	39	25
1	B	279/291 (96%)	272 (98%)	7 (2%)	47	34
All	All	560/582 (96%)	544 (97%)	16 (3%)	42	29

All (16) residues with a non-rotameric sidechain are listed below:

Mol	Chain	Res	Type
1	A	7	TYR
1	A	65	LYS
1	A	74	LYS
1	A	107	SER
1	A	161	LYS

Continued on next page...

Continued from previous page...

Mol	Chain	Res	Type
1	A	166	ASP
1	A	169	LYS
1	A	257	LYS
1	A	299	ARG
1	B	2	GLU
1	B	7	TYR
1	B	43	LYS
1	B	145	ASP
1	B	178	ARG
1	B	216	LYS
1	B	218	SER

Some sidechains can be flipped to improve hydrogen bonding and reduce clashes. All (1) such sidechains are listed below:

Mol	Chain	Res	Type
1	A	49	ASN

5.3.3 RNA [i](#)

There are no RNA molecules in this entry.

5.4 Non-standard residues in protein, DNA, RNA chains [i](#)

There are no non-standard protein/DNA/RNA residues in this entry.

5.5 Carbohydrates [i](#)

There are no carbohydrates in this entry.

5.6 Ligand geometry [i](#)

Of 6 ligands modelled in this entry, 1 is monoatomic - leaving 5 for Mogul analysis.

In the following table, the Counts columns list the number of bonds (or angles) for which Mogul statistics could be retrieved, the number of bonds (or angles) that are observed in the model and the number of bonds (or angles) that are defined in the Chemical Component Dictionary. The Link column lists molecule types, if any, to which the group is linked. The Z score for a bond length (or angle) is the number of standard deviations the observed value is removed from the expected value. A bond length (or angle) with $|Z| > 2$ is considered an outlier worth inspection. RMSZ is the root-mean-square of all Z scores of the bond lengths (or angles).

Mol	Type	Chain	Res	Link	Bond lengths			Bond angles		
					Counts	RMSZ	# Z > 2	Counts	RMSZ	# Z > 2
2	ACO	B	401	-	45,53,53	0.93	2 (4%)	56,79,79	1.51	9 (16%)
2	ACO	A	401	-	45,53,53	0.86	1 (2%)	56,79,79	1.33	9 (16%)
2	ACO	A	402	-	23,28,53	1.97	2 (8%)	34,40,79	1.51	8 (23%)
3	EDO	A	403	-	3,3,3	0.66	0	2,2,2	0.30	0
2	ACO	B	402	-	23,28,53	0.73	0	34,40,79	1.33	4 (11%)

In the following table, the Chirals column lists the number of chiral outliers, the number of chiral centers analysed, the number of these observed in the model and the number defined in the Chemical Component Dictionary. Similar counts are reported in the Torsion and Rings columns. '-' means no outliers of that kind were identified.

Mol	Type	Chain	Res	Link	Chirals	Torsions	Rings
2	ACO	B	401	-	-	1/47/67/67	0/3/3/3
2	ACO	A	401	-	-	7/47/67/67	0/3/3/3
2	ACO	A	402	-	-	3/36/36/67	-
3	EDO	A	403	-	-	0/1/1/1	-
2	ACO	B	402	-	-	3/36/36/67	-

All (5) bond length outliers are listed below:

Mol	Chain	Res	Type	Atoms	Z	Observed(Å)	Ideal(Å)
2	A	402	ACO	CH3-C	-6.74	1.23	1.50
2	A	402	ACO	O-C	5.92	1.49	1.20
2	B	401	ACO	O4B-C1B	3.03	1.45	1.41
2	A	401	ACO	C5A-C4A	2.81	1.48	1.40
2	B	401	ACO	C5A-C4A	2.31	1.47	1.40

All (30) bond angle outliers are listed below:

Mol	Chain	Res	Type	Atoms	Z	Observed(°)	Ideal(°)
2	A	401	ACO	N3A-C2A-N1A	-4.17	122.17	128.68
2	B	401	ACO	C1B-N9A-C4A	-4.16	119.34	126.64
2	B	401	ACO	N3A-C2A-N1A	-3.66	122.95	128.68
2	A	402	ACO	CEP-CBP-CAP	3.34	114.61	108.82
2	A	402	ACO	O2A-P1A-O3A	-3.12	94.17	104.64
2	B	401	ACO	N6A-C6A-N1A	3.11	125.02	118.57
2	B	402	ACO	CEP-CBP-CAP	2.87	113.80	108.82
2	B	401	ACO	O5P-C5P-C6P	-2.85	116.80	122.02
2	A	401	ACO	CDP-CBP-CCP	2.74	112.70	108.23
2	A	402	ACO	P2A-O3A-P1A	-2.73	123.46	132.83

Continued on next page...

Continued from previous page...

Mol	Chain	Res	Type	Atoms	Z	Observed(°)	Ideal(°)
2	B	401	ACO	C2A-N1A-C6A	2.68	123.34	118.75
2	B	402	ACO	O3A-P1A-O1A	-2.66	96.43	111.19
2	B	402	ACO	O5B-P1A-O1A	2.64	121.03	110.68
2	A	401	ACO	C3B-C2B-C1B	2.64	105.74	99.89
2	A	401	ACO	C2A-N1A-C6A	2.62	123.24	118.75
2	B	401	ACO	P2A-O3A-P1A	-2.59	123.95	132.83
2	B	401	ACO	C6P-C5P-N4P	2.56	120.73	116.42
2	A	402	ACO	O5A-P2A-O4A	2.52	124.71	112.24
2	A	401	ACO	O2A-P1A-O1A	2.47	124.47	112.24
2	B	401	ACO	O6A-P2A-O4A	-2.43	99.56	109.07
2	A	402	ACO	O6A-P2A-O4A	-2.40	99.68	109.07
2	A	401	ACO	C4A-C5A-N7A	-2.35	106.95	109.40
2	A	402	ACO	O6A-CCP-CBP	-2.30	106.85	110.55
2	A	402	ACO	C6P-C7P-N8P	2.22	116.39	111.90
2	A	401	ACO	CEP-CBP-CAP	2.22	112.68	108.82
2	A	401	ACO	O9A-P3B-O8A	2.15	115.86	107.64
2	B	401	ACO	O2A-P1A-O1A	2.14	122.81	112.24
2	A	401	ACO	N6A-C6A-N1A	2.07	122.88	118.57
2	B	402	ACO	O5A-P2A-O4A	2.02	122.23	112.24
2	A	402	ACO	C3P-N4P-C5P	-2.01	119.10	122.84

There are no chirality outliers.

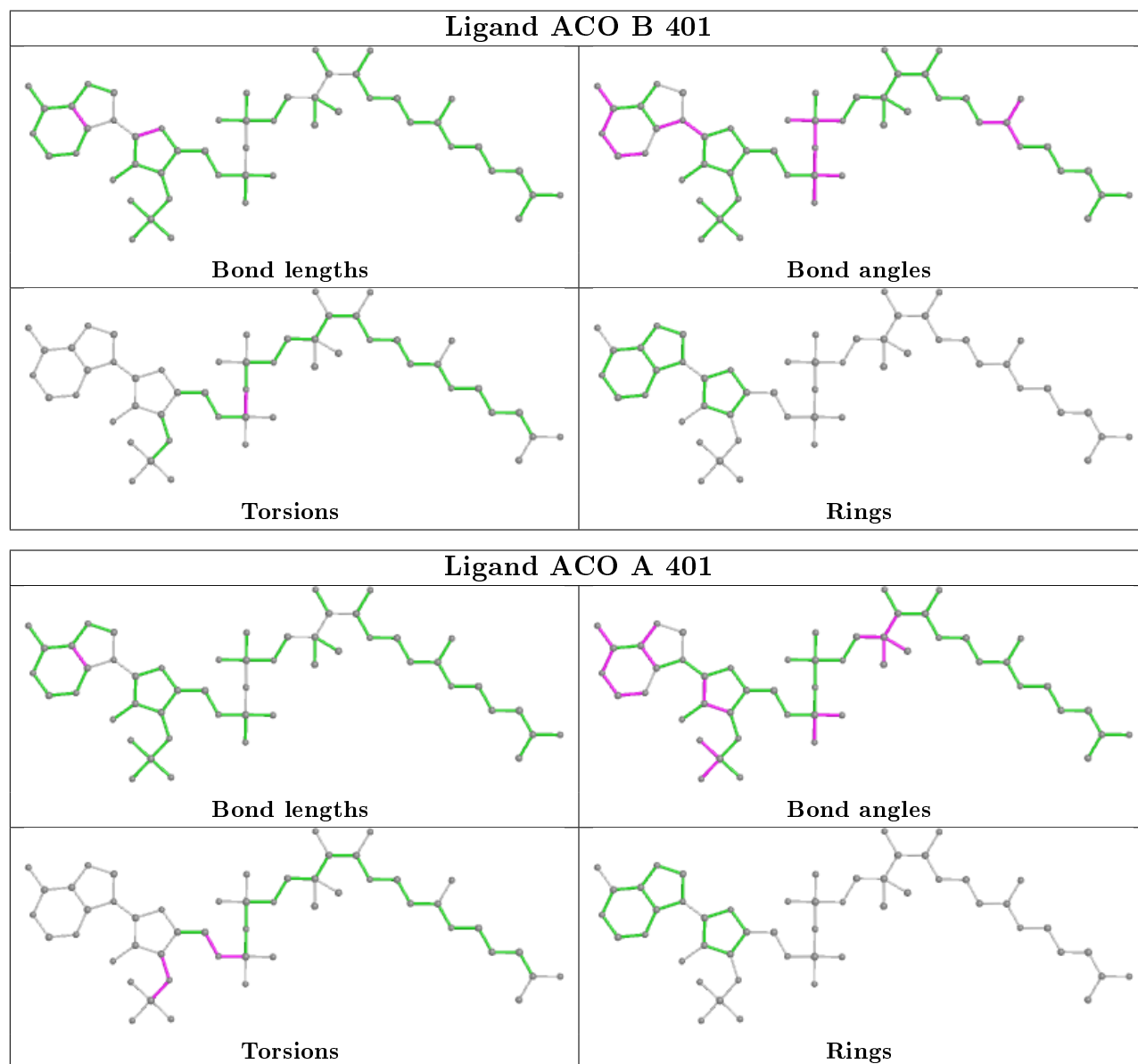
All (14) torsion outliers are listed below:

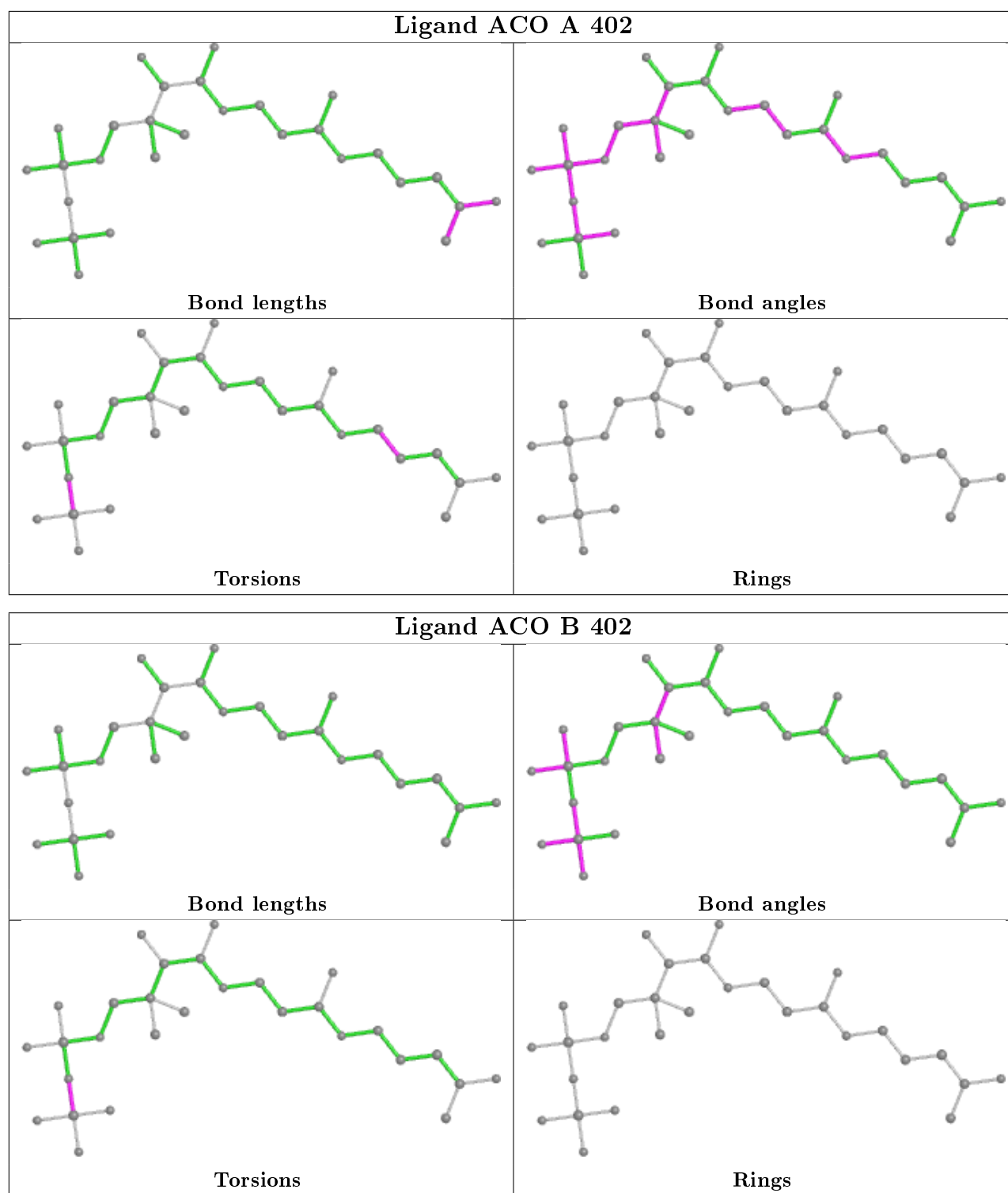
Mol	Chain	Res	Type	Atoms
2	A	401	ACO	C5B-O5B-P1A-O1A
2	A	401	ACO	C5B-O5B-P1A-O3A
2	B	402	ACO	P2A-O3A-P1A-O2A
2	A	401	ACO	C2B-C3B-O3B-P3B
2	A	401	ACO	C3B-O3B-P3B-O8A
2	A	401	ACO	C4B-C3B-O3B-P3B
2	A	402	ACO	S1P-C2P-C3P-N4P
2	A	401	ACO	C4B-C5B-O5B-P1A
2	A	402	ACO	P2A-O3A-P1A-O5B
2	A	402	ACO	P2A-O3A-P1A-O2A
2	B	402	ACO	P2A-O3A-P1A-O5B
2	B	401	ACO	P2A-O3A-P1A-O1A
2	A	401	ACO	C5B-O5B-P1A-O2A
2	B	402	ACO	P2A-O3A-P1A-O1A

There are no ring outliers.

No monomer is involved in short contacts.

The following is a two-dimensional graphical depiction of Mogul quality analysis of bond lengths, bond angles, torsion angles, and ring geometry for all instances of the Ligand of Interest. In addition, ligands with molecular weight > 250 and outliers as shown on the validation Tables will also be included. For torsion angles, if less than 5% of the Mogul distribution of torsion angles is within 10 degrees of the torsion angle in question, then that torsion angle is considered an outlier. Any bond that is central to one or more torsion angles identified as an outlier by Mogul will be highlighted in the graph. For rings, the root-mean-square deviation (RMSD) between the ring in question and similar rings identified by Mogul is calculated over all ring torsion angles. If the average RMSD is greater than 60 degrees and the minimal RMSD between the ring in question and any Mogul-identified rings is also greater than 60 degrees, then that ring is considered an outlier. The outliers are highlighted in purple. The color gray indicates Mogul did not find sufficient equivalents in the CSD to analyse the geometry.





5.7 Other polymers ⓘ

There are no such residues in this entry.

5.8 Polymer linkage issues

There are no chain breaks in this entry.

6 Fit of model and data [i](#)

6.1 Protein, DNA and RNA chains [i](#)

In the following table, the column labelled ‘#RSRZ> 2’ contains the number (and percentage) of RSRZ outliers, followed by percent RSRZ outliers for the chain as percentile scores relative to all X-ray entries and entries of similar resolution. The OWAB column contains the minimum, median, 95th percentile and maximum values of the occupancy-weighted average B-factor per residue. The column labelled ‘Q< 0.9’ lists the number of (and percentage) of residues with an average occupancy less than 0.9.

Mol	Chain	Analysed	<RSRZ>	#RSRZ>2	OWAB(Å ²)	Q<0.9
1	A	316/328 (96%)	-0.10	9 (2%) 53 47	13, 28, 53, 79	0
1	B	313/328 (95%)	-0.44	2 (0%) 89 87	9, 19, 39, 60	0
All	All	629/656 (95%)	-0.27	11 (1%) 70 66	9, 24, 48, 79	0

All (11) RSRZ outliers are listed below:

Mol	Chain	Res	Type	RSRZ
1	A	163	SER	3.5
1	A	164	ILE	3.5
1	B	159	PHE	2.8
1	A	161	LYS	2.7
1	B	245	HIS	2.7
1	A	159	PHE	2.4
1	A	175	PRO	2.4
1	A	162	PRO	2.2
1	A	168	PHE	2.2
1	A	165	LYS	2.1
1	A	166	ASP	2.1

6.2 Non-standard residues in protein, DNA, RNA chains [i](#)

There are no non-standard protein/DNA/RNA residues in this entry.

6.3 Carbohydrates [i](#)

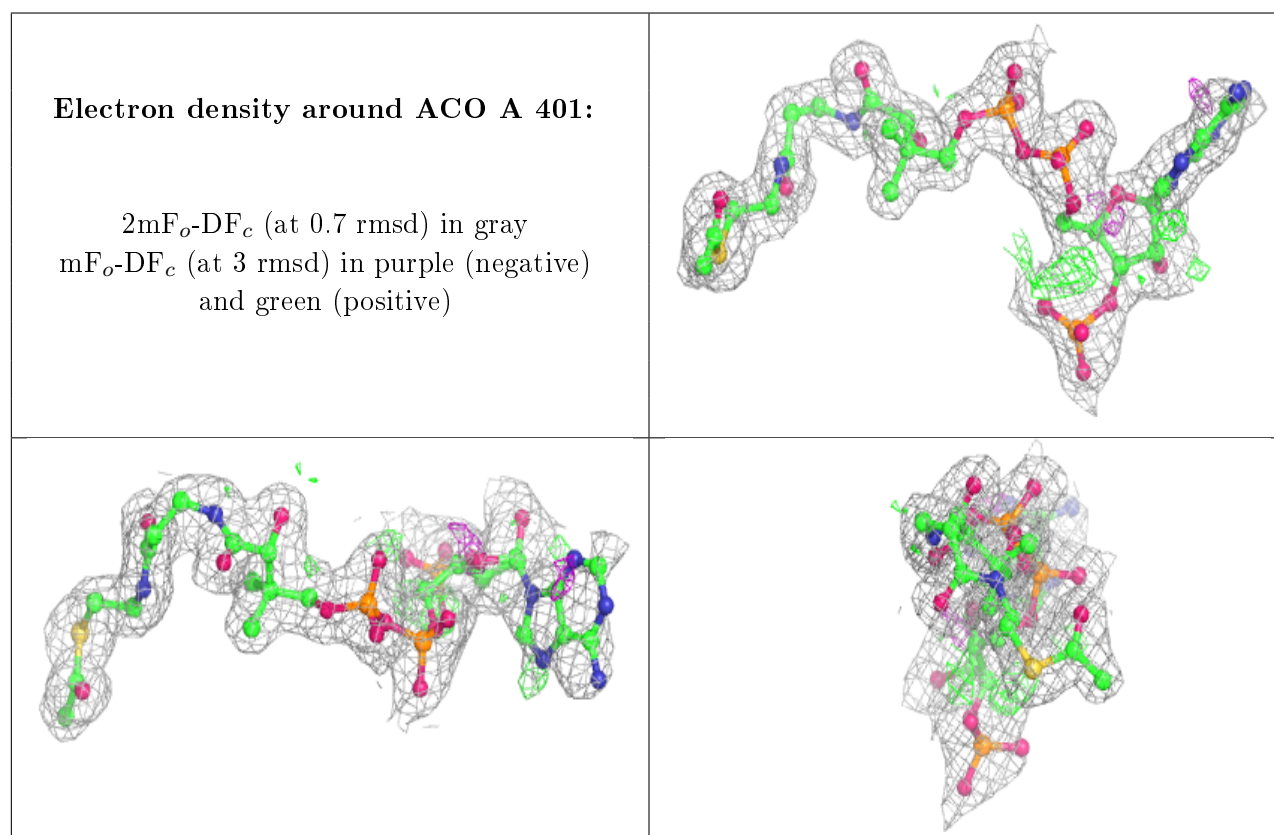
There are no carbohydrates in this entry.

6.4 Ligands [i](#)

In the following table, the Atoms column lists the number of modelled atoms in the group and the number defined in the chemical component dictionary. The B-factors column lists the minimum, median, 95th percentile and maximum values of B factors of atoms in the group. The column labelled 'Q<0.9' lists the number of atoms with occupancy less than 0.9.

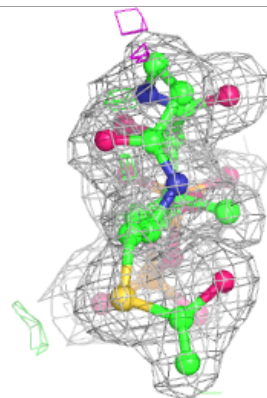
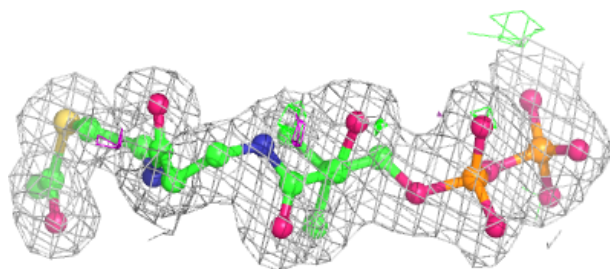
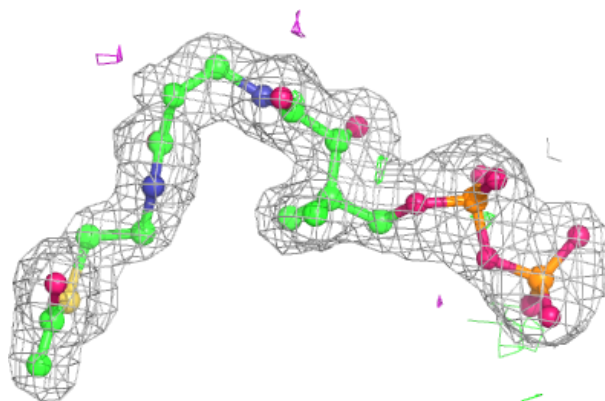
Mol	Type	Chain	Res	Atoms	RSCC	RSR	B-factors(\AA^2)	Q<0.9
3	EDO	A	403	4/4	0.77	0.16	37,38,38,45	0
2	ACO	A	401	51/51	0.94	0.11	15,25,77,79	0
2	ACO	A	402	29/51	0.96	0.08	19,27,39,41	0
2	ACO	B	401	51/51	0.97	0.07	9,15,19,21	0
4	CL	B	403	1/1	0.97	0.05	33,33,33,33	0
2	ACO	B	402	29/51	0.98	0.07	14,19,26,34	0

The following is a graphical depiction of the model fit to experimental electron density of all instances of the Ligand of Interest. In addition, ligands with molecular weight > 250 and outliers as shown on the geometry validation Tables will also be included. Each fit is shown from different orientation to approximate a three-dimensional view.

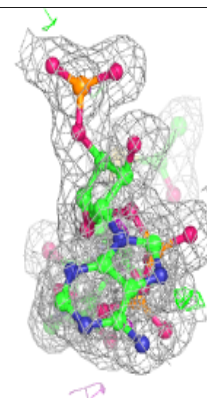
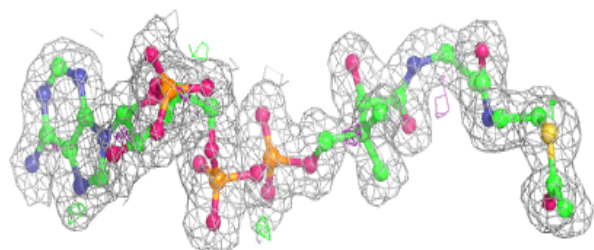
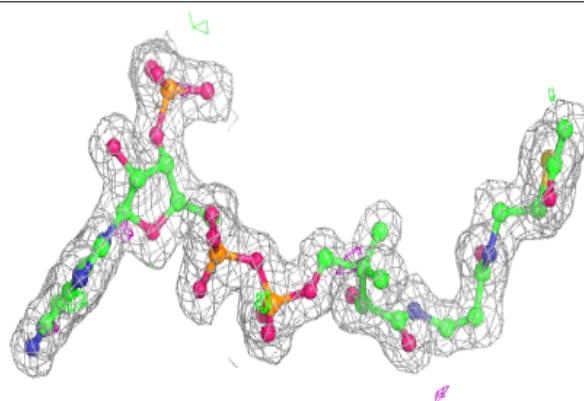


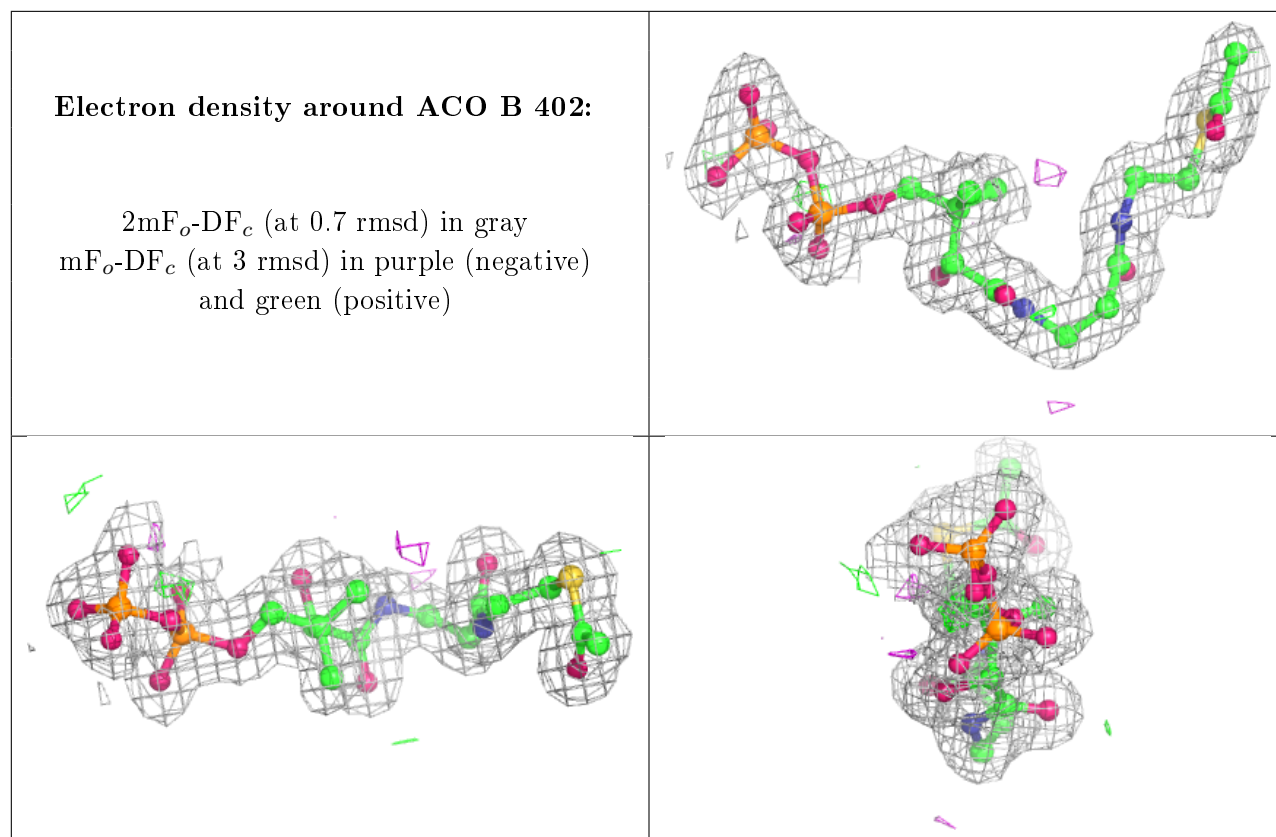
Electron density around ACO A 402:

$2mF_o-DF_c$ (at 0.7 rmsd) in gray
 mF_o-DF_c (at 3 rmsd) in purple (negative)
and green (positive)

**Electron density around ACO B 401:**

$2mF_o-DF_c$ (at 0.7 rmsd) in gray
 mF_o-DF_c (at 3 rmsd) in purple (negative)
and green (positive)





6.5 Other polymers [i](#)

There are no such residues in this entry.