



# Full wwPDB X-ray Structure Validation Report ⓘ

Jan 25, 2022 – 08:02 PM EST

PDB ID : 7KHM  
Title : Crystal structure of hDHHS20 bound to palmitoyl CoA  
Authors : Lee, C.-J.; Banerjee, A.  
Deposited on : 2020-10-21  
Resolution : 2.88 Å(reported)

This is a Full wwPDB X-ray Structure Validation Report for a publicly released PDB entry.

We welcome your comments at [validation@mail.wwpdb.org](mailto:validation@mail.wwpdb.org)

A user guide is available at

<https://www.wwpdb.org/validation/2017/XrayValidationReportHelp>

with specific help available everywhere you see the ⓘ symbol.

---

The following versions of software and data (see [references ⓘ](#)) were used in the production of this report:

MolProbity : 4.02b-467  
Mogul : 1.8.5 (274361), CSD as541be (2020)  
Xtriage (Phenix) : 1.13  
EDS : 2.26  
buster-report : 1.1.7 (2018)  
Percentile statistics : 20191225.v01 (using entries in the PDB archive December 25th 2019)  
Refmac : 5.8.0158  
CCP4 : 7.0.044 (Gargrove)  
Ideal geometry (proteins) : Engh & Huber (2001)  
Ideal geometry (DNA, RNA) : Parkinson et al. (1996)  
Validation Pipeline (wwPDB-VP) : 2.26

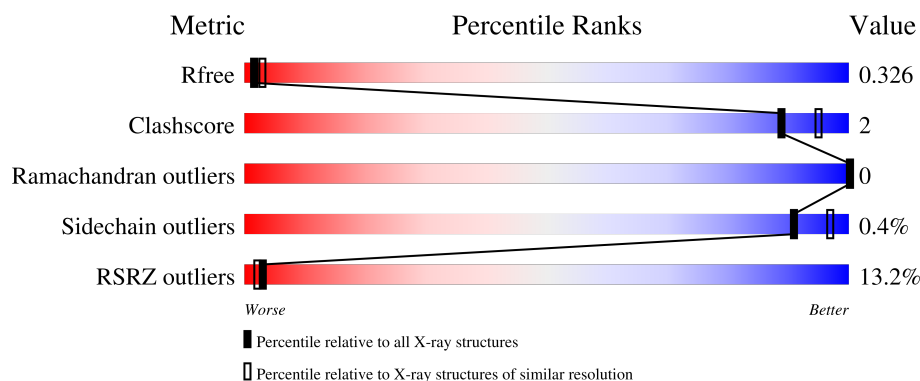
# 1 Overall quality at a glance

The following experimental techniques were used to determine the structure:

*X-RAY DIFFRACTION*

The reported resolution of this entry is 2.88 Å.

Percentile scores (ranging between 0-100) for global validation metrics of the entry are shown in the following graphic. The table shows the number of entries on which the scores are based.



Metric	Whole archive (#Entries)	Similar resolution (#Entries, resolution range(Å))
$R_{free}$	130704	2691 (2.90-2.86)
Clashscore	141614	2947 (2.90-2.86)
Ramachandran outliers	138981	2868 (2.90-2.86)
Sidechain outliers	138945	2871 (2.90-2.86)
RSRZ outliers	127900	2629 (2.90-2.86)

The table below summarises the geometric issues observed across the polymeric chains and their fit to the electron density. The red, orange, yellow and green segments of the lower bar indicate the fraction of residues that contain outliers for  $\geq 3$ , 2, 1 and 0 types of geometric quality criteria respectively. A grey segment represents the fraction of residues that are not modelled. The numeric value for each fraction is indicated below the corresponding segment, with a dot representing fractions  $\leq 5\%$ . The upper red bar (where present) indicates the fraction of residues that have poor fit to the electron density. The numeric value is given above the bar.

Mol	Chain	Length	Quality of chain
1	A	330	
1	B	330	

## 2 Entry composition

There are 5 unique types of molecules in this entry. The entry contains 4650 atoms, of which 0 are hydrogens and 0 are deuteriums.

In the tables below, the ZeroOcc column contains the number of atoms modelled with zero occupancy, the AltConf column contains the number of residues with at least one atom in alternate conformation and the Trace column contains the number of residues modelled with at most 2 atoms.

- Molecule 1 is a protein called Isoform 4 of Palmitoyltransferase ZDHHC20.

Mol	Chain	Residues	Atoms					ZeroOcc	AltConf	Trace
1	A	290	Total	C	N	O	S	0	0	0
			2271	1517	364	375	15			
1	B	287	Total	C	N	O	S	0	1	0
			2260	1516	361	368	15			

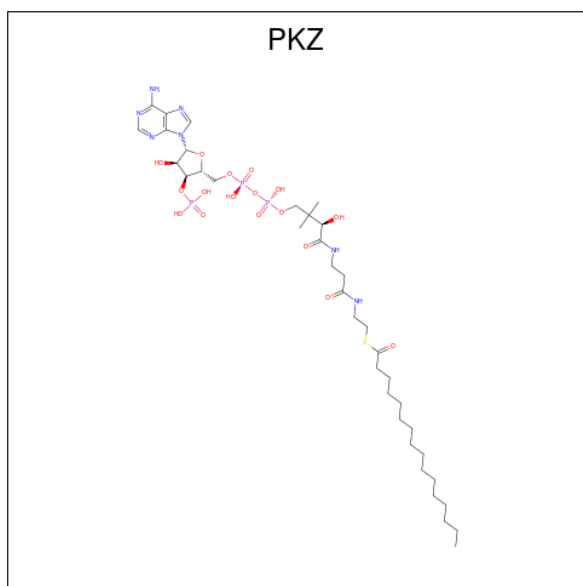
There are 24 discrepancies between the modelled and reference sequences:

Chain	Residue	Modelled	Actual	Comment	Reference
A	-6	GLY	-	expression tag	UNP Q5W0Z9
A	-5	PRO	-	expression tag	UNP Q5W0Z9
A	-4	SER	-	expression tag	UNP Q5W0Z9
A	-3	ARG	-	expression tag	UNP Q5W0Z9
A	-2	ALA	-	expression tag	UNP Q5W0Z9
A	-1	THR	-	expression tag	UNP Q5W0Z9
A	0	MET	-	expression tag	UNP Q5W0Z9
A	1	GLY	-	expression tag	UNP Q5W0Z9
A	156	SER	CYS	engineered mutation	UNP Q5W0Z9
A	321	SER	-	expression tag	UNP Q5W0Z9
A	322	ASN	-	expression tag	UNP Q5W0Z9
A	323	SER	-	expression tag	UNP Q5W0Z9
B	-6	GLY	-	expression tag	UNP Q5W0Z9
B	-5	PRO	-	expression tag	UNP Q5W0Z9
B	-4	SER	-	expression tag	UNP Q5W0Z9
B	-3	ARG	-	expression tag	UNP Q5W0Z9
B	-2	ALA	-	expression tag	UNP Q5W0Z9
B	-1	THR	-	expression tag	UNP Q5W0Z9
B	0	MET	-	expression tag	UNP Q5W0Z9
B	1	GLY	-	expression tag	UNP Q5W0Z9
B	156	SER	CYS	engineered mutation	UNP Q5W0Z9
B	321	SER	-	expression tag	UNP Q5W0Z9
B	322	ASN	-	expression tag	UNP Q5W0Z9
B	323	SER	-	expression tag	UNP Q5W0Z9

- Molecule 2 is ZINC ION (three-letter code: ZN) (formula: Zn).

Mol	Chain	Residues	Atoms		ZeroOcc	AltConf
2	A	2	Total	Zn	0	0
			2	2		
2	B	2	Total	Zn	0	0
			2	2		

- Molecule 3 is Palmitoyl-CoA (three-letter code: PKZ) (formula: C<sub>37</sub>H<sub>66</sub>N<sub>7</sub>O<sub>17</sub>P<sub>3</sub>S) (labeled as "Ligand of Interest" by depositor).



Mol	Chain	Residues	Atoms						ZeroOcc	AltConf
3	A	1	Total	C	N	O	P	S	0	0
			65	37	7	17	3	1		
3	B	1	Total	C	N	O	P		0	0
			31	10	5	13	3			

- Molecule 4 is PHOSPHATE ION (three-letter code: PO4) (formula: O<sub>4</sub>P).



Mol	Chain	Residues	Atoms			ZeroOcc	AltConf
4	A	1	Total	O	P	0	0
			5	4	1		

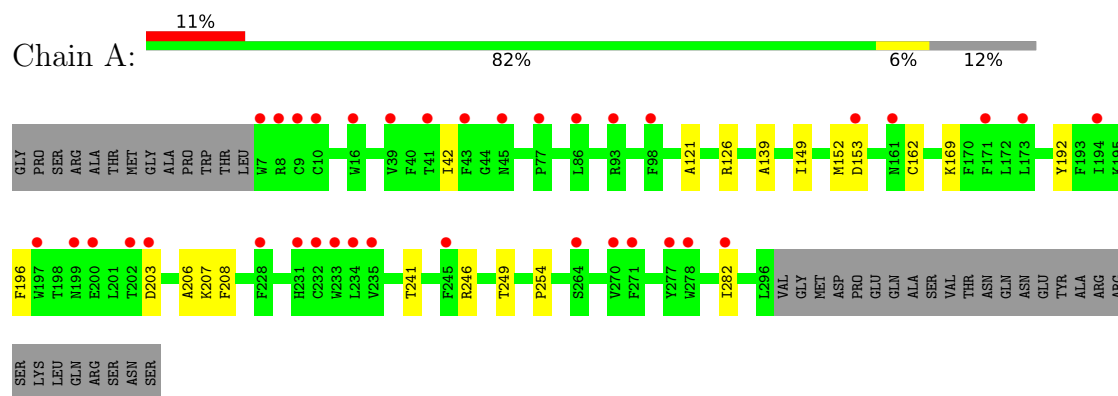
- Molecule 5 is water.

Mol	Chain	Residues	Atoms		ZeroOcc	AltConf
5	A	8	Total	O	0	0
			8	8		
5	B	6	Total	O	0	0
			6	6		

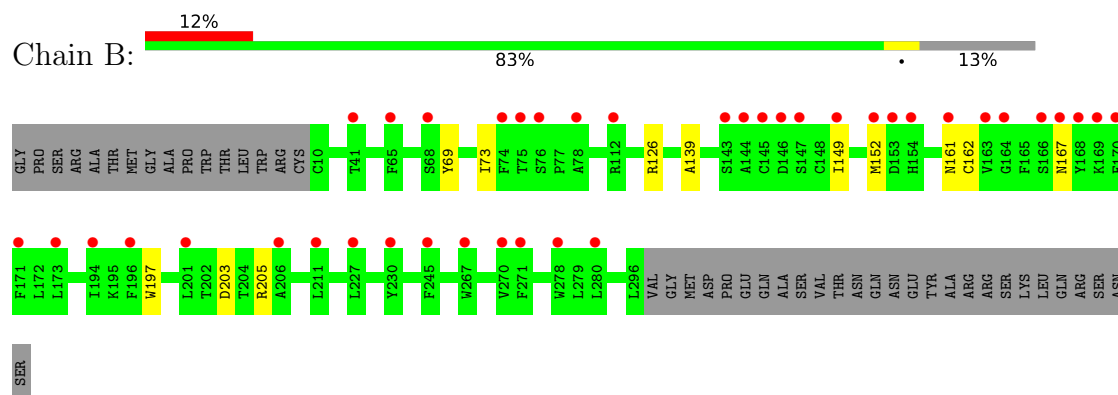
### 3 Residue-property plots [i](#)

These plots are drawn for all protein, RNA, DNA and oligosaccharide chains in the entry. The first graphic for a chain summarises the proportions of the various outlier classes displayed in the second graphic. The second graphic shows the sequence view annotated by issues in geometry and electron density. Residues are color-coded according to the number of geometric quality criteria for which they contain at least one outlier: green = 0, yellow = 1, orange = 2 and red = 3 or more. A red dot above a residue indicates a poor fit to the electron density ( $RSRZ > 2$ ). Stretches of 2 or more consecutive residues without any outlier are shown as a green connector. Residues present in the sample, but not in the model, are shown in grey.

- Molecule 1: Isoform 4 of Palmitoyltransferase ZDHHC20



- Molecule 1: Isoform 4 of Palmitoyltransferase ZDHHC20



## 4 Data and refinement statistics

Property	Value	Source
Space group	P 1 21 1	Depositor
Cell constants a, b, c, $\alpha$ , $\beta$ , $\gamma$	53.53Å 114.61Å 83.60Å 90.00° 91.23° 90.00°	Depositor
Resolution (Å)	67.53 – 2.88 83.58 – 2.88	Depositor EDS
% Data completeness (in resolution range)	96.9 (67.53-2.88) 82.2 (83.58-2.88)	Depositor EDS
$R_{merge}$	0.16	Depositor
$R_{sym}$	(Not available)	Depositor
$\langle I/\sigma(I) \rangle$ <sup>1</sup>	0.95 (at 2.86Å)	Xtriage
Refinement program	PHENIX 1.82	Depositor
R, $R_{free}$	0.294 , 0.325 0.294 , 0.326	Depositor DCC
$R_{free}$ test set	1984 reflections (8.90%)	wwPDB-VP
Wilson B-factor (Å <sup>2</sup> )	77.7	Xtriage
Anisotropy	0.745	Xtriage
Bulk solvent $k_{sol}$ (e/Å <sup>3</sup> ), $B_{sol}$ (Å <sup>2</sup> )	0.29 , 99.3	EDS
L-test for twinning <sup>2</sup>	$\langle  L  \rangle = 0.50$ , $\langle L^2 \rangle = 0.33$	Xtriage
Estimated twinning fraction	0.047 for h,-k,-l	Xtriage
$F_o, F_c$ correlation	0.89	EDS
Total number of atoms	4650	wwPDB-VP
Average B, all atoms (Å <sup>2</sup> )	129.0	wwPDB-VP

Xtriage's analysis on translational NCS is as follows: *The largest off-origin peak in the Patterson function is 10.18% of the height of the origin peak. No significant pseudotranslation is detected.*

<sup>1</sup>Intensities estimated from amplitudes.

<sup>2</sup>Theoretical values of  $\langle |L| \rangle$ ,  $\langle L^2 \rangle$  for acentric reflections are 0.5, 0.333 respectively for untwinned datasets, and 0.375, 0.2 for perfectly twinned datasets.

## 5 Model quality [i](#)

### 5.1 Standard geometry [i](#)

Bond lengths and bond angles in the following residue types are not validated in this section: PO4, ZN, PKZ

The Z score for a bond length (or angle) is the number of standard deviations the observed value is removed from the expected value. A bond length (or angle) with  $|Z| > 5$  is considered an outlier worth inspection. RMSZ is the root-mean-square of all Z scores of the bond lengths (or angles).

Mol	Chain	Bond lengths		Bond angles	
		RMSZ	$\# Z  > 5$	RMSZ	$\# Z  > 5$
1	A	0.28	0/2350	0.43	0/3207
1	B	0.27	0/2340	0.39	0/3193
All	All	0.27	0/4690	0.41	0/6400

There are no bond length outliers.

There are no bond angle outliers.

There are no chirality outliers.

There are no planarity outliers.

### 5.2 Too-close contacts [i](#)

In the following table, the Non-H and H(model) columns list the number of non-hydrogen atoms and hydrogen atoms in the chain respectively. The H(added) column lists the number of hydrogen atoms added and optimized by MolProbity. The Clashes column lists the number of clashes within the asymmetric unit, whereas Symm-Clashes lists symmetry-related clashes.

Mol	Chain	Non-H	H(model)	H(added)	Clashes	Symm-Clashes
1	A	2271	0	2112	11	0
1	B	2260	0	2102	7	0
2	A	2	0	0	0	0
2	B	2	0	0	0	0
3	A	65	0	0	0	0
3	B	31	0	0	0	0
4	A	5	0	0	1	0
5	A	8	0	0	0	0
5	B	6	0	0	1	0
All	All	4650	0	4214	17	0

The all-atom clashscore is defined as the number of clashes found per 1000 atoms (including



hydrogen atoms). The all-atom clashscore for this structure is 2.

All (17) close contacts within the same asymmetric unit are listed below, sorted by their clash magnitude.

Atom-1	Atom-2	Interatomic distance (Å)	Clash overlap (Å)
1:A:203:ASP:HB3	1:A:206:ALA:HB3	1.70	0.73
1:A:246:ARG:NH1	4:A:404:PO4:O3	2.31	0.63
1:A:126:ARG:NH2	1:A:139:ALA:O	2.33	0.62
1:B:126:ARG:NH1	5:B:501:HOH:O	2.31	0.61
1:B:126:ARG:NH2	1:B:139:ALA:O	2.37	0.57
1:A:169:LYS:NZ	1:A:282:ILE:O	2.37	0.53
1:A:208:PHE:HA	1:B:197:TRP:HZ3	1.77	0.49
1:B:69:TYR:CZ	1:B:73:ILE:HD11	2.47	0.49
1:B:149:ILE:HB	1:B:152:MET:HB2	1.97	0.46
1:A:153:ASP:O	1:A:241:THR:HB	2.16	0.46
1:A:149:ILE:HB	1:A:152:MET:HB2	1.97	0.45
1:A:196:PHE:CD2	1:A:207:LYS:HG2	2.52	0.45
1:A:249:THR:HG22	1:A:254:PRO:HG3	1.99	0.45
1:A:121:ALA:HA	1:A:249:THR:HG21	2.01	0.42
1:A:42:ILE:HG12	1:A:192:TYR:CZ	2.55	0.42
1:B:161:ASN:ND2	1:B:167:ASN:HD21	2.17	0.42
1:B:203:ASP:OD1	1:B:205:ARG:N	2.53	0.41

There are no symmetry-related clashes.

## 5.3 Torsion angles ⓘ

### 5.3.1 Protein backbone ⓘ

In the following table, the Percentiles column shows the percent Ramachandran outliers of the chain as a percentile score with respect to all X-ray entries followed by that with respect to entries of similar resolution.

The Analysed column shows the number of residues for which the backbone conformation was analysed, and the total number of residues.

Mol	Chain	Analysed	Favoured	Allowed	Outliers	Percentiles	
1	A	288/330 (87%)	280 (97%)	8 (3%)	0	100	100
1	B	286/330 (87%)	279 (98%)	7 (2%)	0	100	100
All	All	574/660 (87%)	559 (97%)	15 (3%)	0	100	100

There are no Ramachandran outliers to report.

### 5.3.2 Protein sidechains [i](#)

In the following table, the Percentiles column shows the percent sidechain outliers of the chain as a percentile score with respect to all X-ray entries followed by that with respect to entries of similar resolution.

The Analysed column shows the number of residues for which the sidechain conformation was analysed, and the total number of residues.

Mol	Chain	Analysed	Rotameric	Outliers	Percentiles	
1	A	226/297 (76%)	225 (100%)	1 (0%)	91	97
1	B	223/297 (75%)	222 (100%)	1 (0%)	91	97
All	All	449/594 (76%)	447 (100%)	2 (0%)	91	97

All (2) residues with a non-rotameric sidechain are listed below:

Mol	Chain	Res	Type
1	A	162	CYS
1	B	162	CYS

Sometimes sidechains can be flipped to improve hydrogen bonding and reduce clashes. All (3) such sidechains are listed below:

Mol	Chain	Res	Type
1	A	140	HIS
1	A	209	HIS
1	B	167	ASN

### 5.3.3 RNA [i](#)

There are no RNA molecules in this entry.

## 5.4 Non-standard residues in protein, DNA, RNA chains [i](#)

There are no non-standard protein/DNA/RNA residues in this entry.

## 5.5 Carbohydrates [i](#)

There are no monosaccharides in this entry.

## 5.6 Ligand geometry

Of 7 ligands modelled in this entry, 4 are monoatomic - leaving 3 for Mogul analysis.

In the following table, the Counts columns list the number of bonds (or angles) for which Mogul statistics could be retrieved, the number of bonds (or angles) that are observed in the model and the number of bonds (or angles) that are defined in the Chemical Component Dictionary. The Link column lists molecule types, if any, to which the group is linked. The Z score for a bond length (or angle) is the number of standard deviations the observed value is removed from the expected value. A bond length (or angle) with  $|Z| > 2$  is considered an outlier worth inspection. RMSZ is the root-mean-square of all Z scores of the bond lengths (or angles).

Mol	Type	Chain	Res	Link	Bond lengths			Bond angles		
					Counts	RMSZ	# Z  > 2	Counts	RMSZ	# Z  > 2
3	PKZ	A	403	-	59,67,67	2.59	13 (22%)	70,93,93	1.43	9 (12%)
3	PKZ	B	403	-	28,33,67	3.13	8 (28%)	35,52,93	1.32	4 (11%)
4	PO4	A	404	-	4,4,4	0.83	0	6,6,6	0.56	0

In the following table, the Chirals column lists the number of chiral outliers, the number of chiral centers analysed, the number of these observed in the model and the number defined in the Chemical Component Dictionary. Similar counts are reported in the Torsion and Rings columns. '-' means no outliers of that kind were identified.

Mol	Type	Chain	Res	Link	Chirals	Torsions	Rings
3	PKZ	A	403	-	-	27/62/82/82	0/3/3/3
3	PKZ	B	403	-	-	6/17/37/82	0/3/3/3

All (21) bond length outliers are listed below:

Mol	Chain	Res	Type	Atoms	Z	Observed(Å)	Ideal(Å)
3	A	403	PKZ	C2B-C3B	-10.25	1.30	1.52
3	B	403	PKZ	C2B-C3B	-9.84	1.31	1.52
3	B	403	PKZ	O4B-C1B	-7.47	1.30	1.41
3	A	403	PKZ	O4B-C1B	-7.46	1.30	1.41
3	B	403	PKZ	C2B-C1B	6.56	1.63	1.53
3	A	403	PKZ	C5P-N4P	6.21	1.47	1.33
3	A	403	PKZ	C9P-N8P	5.97	1.46	1.33
3	A	403	PKZ	C2B-C1B	5.87	1.62	1.53
3	A	403	PKZ	O4B-C4B	4.76	1.55	1.45
3	B	403	PKZ	O4B-C4B	4.45	1.54	1.45
3	A	403	PKZ	C2-C1	3.56	1.54	1.50
3	A	403	PKZ	C5B-C4B	-3.46	1.40	1.51
3	A	403	PKZ	C6A-N6A	3.36	1.46	1.34
3	B	403	PKZ	C5B-C4B	-3.28	1.41	1.51

*Continued on next page...*

*Continued from previous page...*

Mol	Chain	Res	Type	Atoms	Z	Observed(Å)	Ideal(Å)
3	B	403	PKZ	P3B-O3B	3.27	1.65	1.59
3	B	403	PKZ	C6A-N6A	3.26	1.45	1.34
3	A	403	PKZ	P3B-O3B	3.22	1.65	1.59
3	B	403	PKZ	P2A-O4A	3.07	1.66	1.54
3	A	403	PKZ	C1-S1P	3.01	1.83	1.76
3	A	403	PKZ	O5P-C5P	-2.04	1.19	1.23
3	A	403	PKZ	O9P-C9P	-2.01	1.19	1.23

All (13) bond angle outliers are listed below:

Mol	Chain	Res	Type	Atoms	Z	Observed(°)	Ideal(°)
3	A	403	PKZ	C2-C1-S1P	6.51	121.04	113.46
3	B	403	PKZ	N3A-C2A-N1A	-4.13	122.23	128.68
3	A	403	PKZ	N3A-C2A-N1A	-4.10	122.28	128.68
3	A	403	PKZ	O1-C1-C2	-3.92	119.36	123.99
3	B	403	PKZ	C3B-C2B-C1B	3.13	106.82	99.89
3	A	403	PKZ	C4A-C5A-N7A	-2.73	106.56	109.40
3	B	403	PKZ	C4A-C5A-N7A	-2.71	106.58	109.40
3	A	403	PKZ	P2A-O3A-P1A	-2.44	124.47	132.83
3	A	403	PKZ	C2P-S1P-C1	2.42	109.39	101.87
3	B	403	PKZ	P1A-O3A-P2A	-2.39	124.61	132.83
3	A	403	PKZ	O1-C1-S1P	-2.32	119.60	122.61
3	A	403	PKZ	C5B-C4B-C3B	-2.30	106.78	114.40
3	A	403	PKZ	C7P-N8P-C9P	-2.17	118.71	122.59

There are no chirality outliers.

All (33) torsion outliers are listed below:

Mol	Chain	Res	Type	Atoms
3	A	403	PKZ	C1-C2-C3-C4
3	A	403	PKZ	O1-C1-S1P-C2P
3	A	403	PKZ	C2-C1-S1P-C2P
3	A	403	PKZ	CCP-O6A-P2A-O3A
3	A	403	PKZ	CCP-O6A-P2A-O5A
3	A	403	PKZ	CAP-C9P-N8P-C7P
3	A	403	PKZ	S1P-C2P-C3P-N4P
3	A	403	PKZ	C3P-C2P-S1P-C1
3	B	403	PKZ	C3B-C4B-C5B-O5B
3	B	403	PKZ	O4B-C4B-C5B-O5B
3	A	403	PKZ	C6P-C5P-N4P-C3P
3	A	403	PKZ	O9P-C9P-N8P-C7P
3	A	403	PKZ	C5-C6-C7-C8

*Continued on next page...*

*Continued from previous page...*

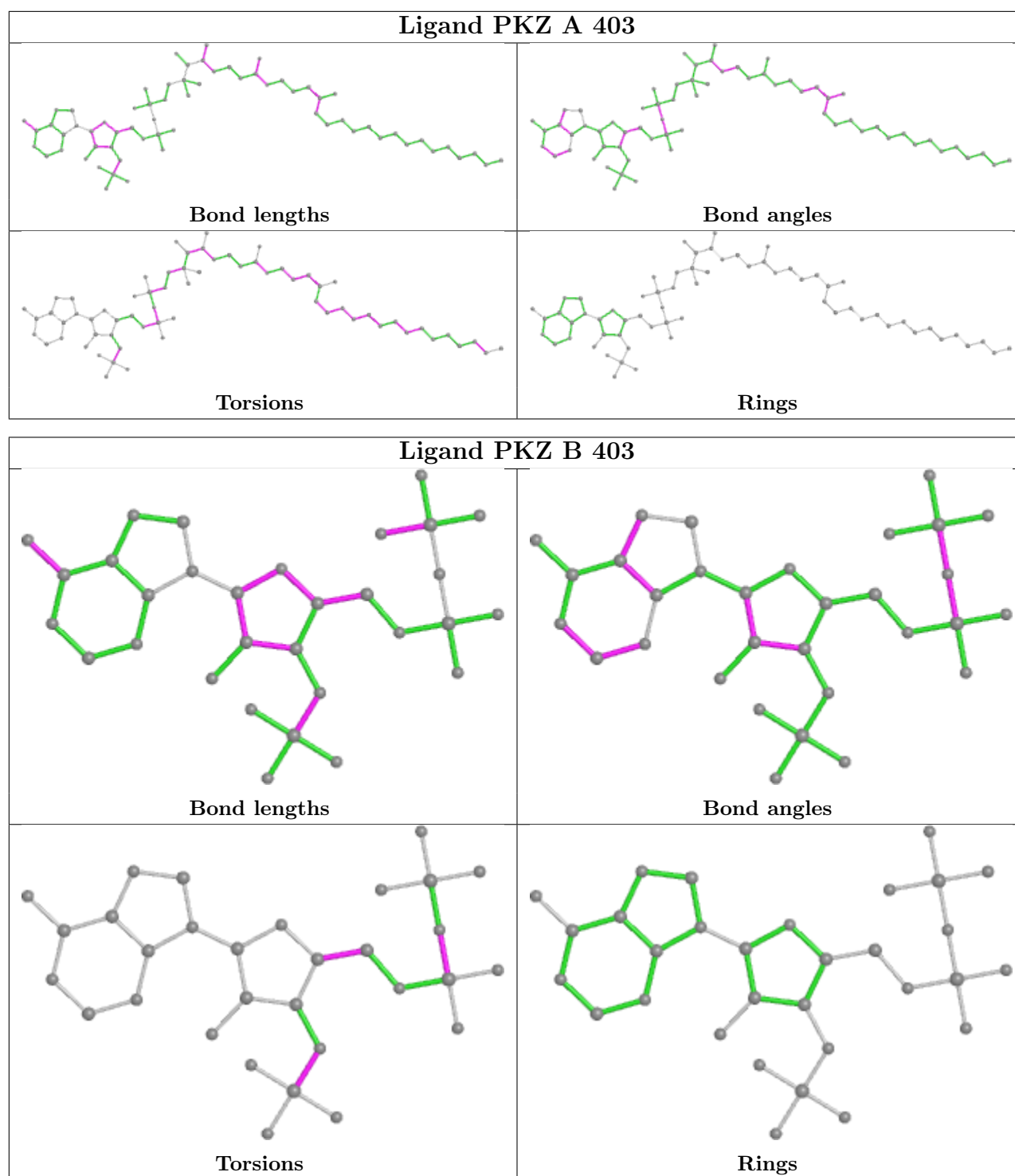
Mol	Chain	Res	Type	Atoms
3	A	403	PKZ	O5P-C5P-N4P-C3P
3	A	403	PKZ	C11-C10-C9-C8
3	A	403	PKZ	C3-C4-C5-C6
3	A	403	PKZ	C4-C5-C6-C7
3	A	403	PKZ	C2-C3-C4-C5
3	A	403	PKZ	P2A-O3A-P1A-O2A
3	A	403	PKZ	P2A-O3A-P1A-O5B
3	B	403	PKZ	P2A-O3A-P1A-O5B
3	A	403	PKZ	C3B-O3B-P3B-O9A
3	A	403	PKZ	C5B-O5B-P1A-O3A
3	A	403	PKZ	C5B-O5B-P1A-O1A
3	A	403	PKZ	C5B-O5B-P1A-O2A
3	A	403	PKZ	CAP-CBP-CCP-O6A
3	A	403	PKZ	O9P-C9P-CAP-OAP
3	A	403	PKZ	CDP-CBP-CCP-O6A
3	B	403	PKZ	C3B-O3B-P3B-O9A
3	A	403	PKZ	C13-C14-C15-C16
3	B	403	PKZ	P2A-O3A-P1A-O1A
3	B	403	PKZ	P2A-O3A-P1A-O2A
3	A	403	PKZ	C7-C8-C9-C10

There are no ring outliers.

1 monomer is involved in 1 short contact:

Mol	Chain	Res	Type	Clashes	Symm-Clashes
4	A	404	PO4	1	0

The following is a two-dimensional graphical depiction of Mogul quality analysis of bond lengths, bond angles, torsion angles, and ring geometry for all instances of the Ligand of Interest. In addition, ligands with molecular weight > 250 and outliers as shown on the validation Tables will also be included. For torsion angles, if less than 5% of the Mogul distribution of torsion angles is within 10 degrees of the torsion angle in question, then that torsion angle is considered an outlier. Any bond that is central to one or more torsion angles identified as an outlier by Mogul will be highlighted in the graph. For rings, the root-mean-square deviation (RMSD) between the ring in question and similar rings identified by Mogul is calculated over all ring torsion angles. If the average RMSD is greater than 60 degrees and the minimal RMSD between the ring in question and any Mogul-identified rings is also greater than 60 degrees, then that ring is considered an outlier. The outliers are highlighted in purple. The color gray indicates Mogul did not find sufficient equivalents in the CSD to analyse the geometry.



## 5.7 Other polymers ⓘ

There are no such residues in this entry.

## 5.8 Polymer linkage issues ⓘ

There are no chain breaks in this entry.

## 6 Fit of model and data ⓘ

### 6.1 Protein, DNA and RNA chains ⓘ

In the following table, the column labelled ‘#RSRZ > 2’ contains the number (and percentage) of RSRZ outliers, followed by percent RSRZ outliers for the chain as percentile scores relative to all X-ray entries and entries of similar resolution. The OWAB column contains the minimum, median, 95<sup>th</sup> percentile and maximum values of the occupancy-weighted average B-factor per residue. The column labelled ‘Q < 0.9’ lists the number of (and percentage) of residues with an average occupancy less than 0.9.

Mol	Chain	Analysed	<RSRZ>	#RSRZ>2	OWAB(Å <sup>2</sup> )	Q<0.9
1	A	290/330 (87%)	0.65	36 (12%) 4 2	94, 121, 179, 210	0
1	B	287/330 (86%)	0.75	40 (13%) 2 2	95, 130, 189, 255	0
All	All	577/660 (87%)	0.70	76 (13%) 3 2	94, 124, 186, 255	0

All (76) RSRZ outliers are listed below:

Mol	Chain	Res	Type	RSRZ
1	B	170	PHE	4.9
1	B	163	VAL	4.6
1	A	202	THR	4.5
1	B	161	ASN	4.5
1	A	10	CYS	4.3
1	A	77	PRO	4.3
1	A	43	PHE	4.3
1	A	93	ARG	4.3
1	A	8	ARG	4.1
1	A	278	TRP	4.0
1	A	7	TRP	4.0
1	B	211	LEU	3.6
1	B	201	LEU	3.5
1	B	206	ALA	3.5
1	B	169	LYS	3.5
1	B	147	SER	3.4
1	B	78	ALA	3.3
1	B	271	PHE	3.2
1	B	143	SER	3.2
1	A	233	TRP	3.1
1	B	196	PHE	3.0
1	B	145	CYS	3.0
1	B	171	PHE	3.0
1	A	271	PHE	2.9

*Continued on next page...*



*Continued from previous page...*

Mol	Chain	Res	Type	RSRZ
1	B	149	ILE	2.9
1	A	9	CYS	2.9
1	A	245	PHE	2.9
1	A	199	ASN	2.9
1	B	75	THR	2.8
1	B	65	PHE	2.8
1	A	161	ASN	2.7
1	B	278	TRP	2.7
1	B	166	SER	2.7
1	B	153	ASP	2.7
1	B	41	THR	2.7
1	A	153	ASP	2.6
1	B	76	SER	2.6
1	A	200	GLU	2.6
1	A	45	ASN	2.5
1	A	16	TRP	2.5
1	A	194	ILE	2.5
1	B	112	ARG	2.5
1	B	164	GLY	2.5
1	A	86	LEU	2.5
1	A	203	ASP	2.4
1	A	228	PHE	2.4
1	B	280	LEU	2.4
1	A	277	TYR	2.4
1	A	197	TRP	2.3
1	B	227	LEU	2.3
1	B	68	SER	2.3
1	A	173	LEU	2.3
1	A	270	VAL	2.3
1	A	98	PHE	2.3
1	B	74	PHE	2.2
1	B	194	ILE	2.2
1	B	146	ASP	2.2
1	A	39	VAL	2.2
1	B	270	VAL	2.2
1	B	167	ASN	2.2
1	B	144	ALA	2.2
1	A	282	ILE	2.2
1	B	154	HIS	2.2
1	A	171	PHE	2.1
1	B	168	TYR	2.1
1	A	235	VAL	2.1

*Continued on next page...*

*Continued from previous page...*

Mol	Chain	Res	Type	RSRZ
1	A	41	THR	2.1
1	B	230	TYR	2.1
1	B	152	MET	2.1
1	B	245	PHE	2.1
1	A	264	SER	2.1
1	A	232	CYS	2.1
1	A	231	HIS	2.0
1	B	173	LEU	2.0
1	A	234	LEU	2.0
1	B	267	TRP	2.0

## 6.2 Non-standard residues in protein, DNA, RNA chains [i](#)

There are no non-standard protein/DNA/RNA residues in this entry.

## 6.3 Carbohydrates [i](#)

There are no monosaccharides in this entry.

## 6.4 Ligands [i](#)

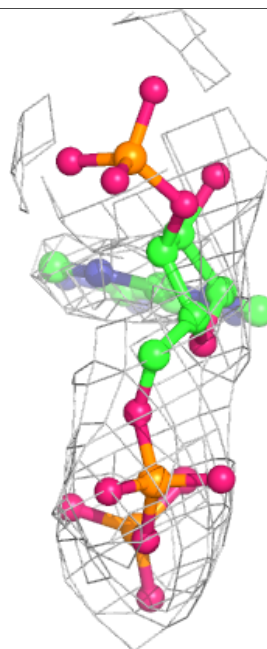
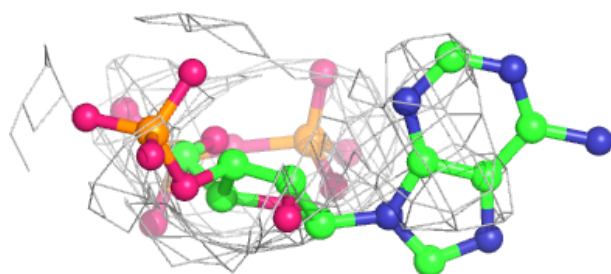
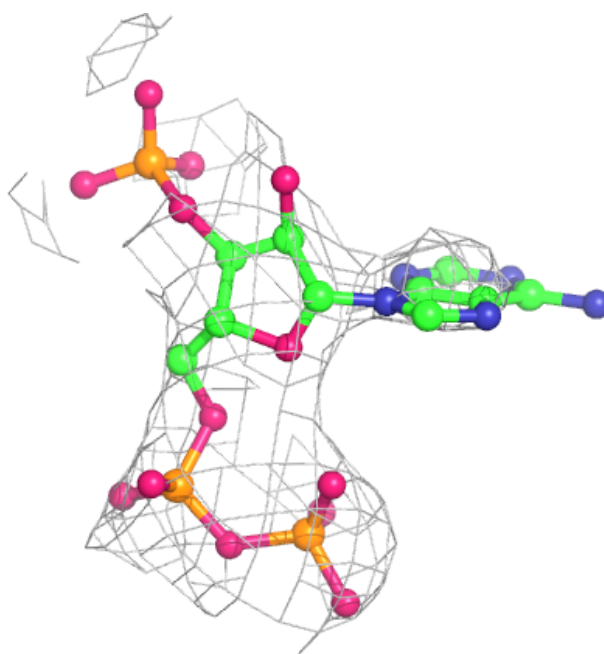
In the following table, the Atoms column lists the number of modelled atoms in the group and the number defined in the chemical component dictionary. The B-factors column lists the minimum, median, 95<sup>th</sup> percentile and maximum values of B factors of atoms in the group. The column labelled 'Q< 0.9' lists the number of atoms with occupancy less than 0.9.

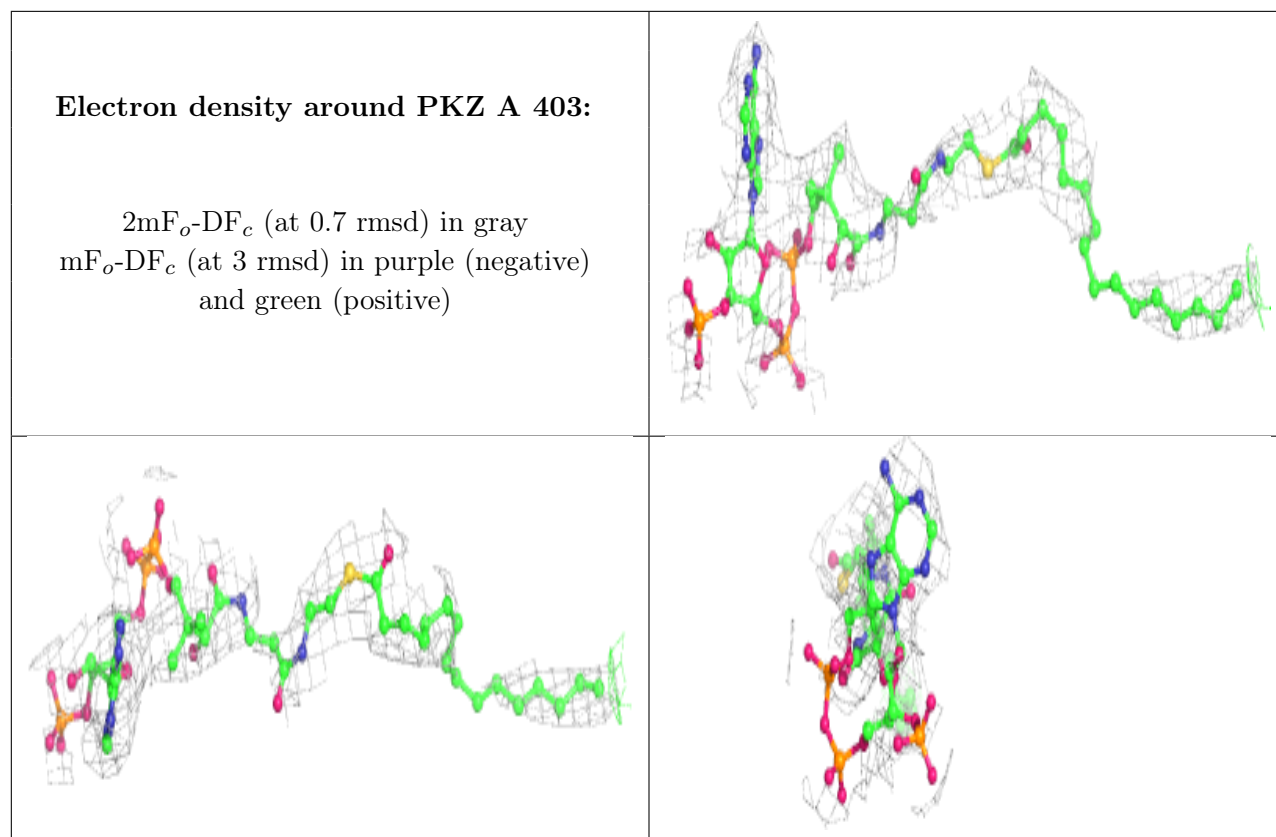
Mol	Type	Chain	Res	Atoms	RSCC	RSR	B-factors(Å <sup>2</sup> )	Q<0.9
3	PKZ	B	403	31/65	0.74	0.34	157,185,199,199	0
3	PKZ	A	403	65/65	0.89	0.24	110,121,135,149	0
4	PO4	A	404	5/5	0.92	0.15	137,137,150,162	0
2	ZN	B	401	1/1	0.96	0.14	148,148,148,148	0
2	ZN	A	401	1/1	0.96	0.19	104,104,104,104	0
2	ZN	B	402	1/1	0.97	0.14	139,139,139,139	0
2	ZN	A	402	1/1	0.98	0.15	113,113,113,113	0

The following is a graphical depiction of the model fit to experimental electron density of all instances of the Ligand of Interest. In addition, ligands with molecular weight > 250 and outliers as shown on the geometry validation Tables will also be included. Each fit is shown from different orientation to approximate a three-dimensional view.

**Electron density around PKZ B 403:**

$2mF_o-DF_c$  (at 0.7 rmsd) in gray  
 $mF_o-DF_c$  (at 3 rmsd) in purple (negative)  
and green (positive)





## 6.5 Other polymers [i](#)

There are no such residues in this entry.