



Full wwPDB X-ray Structure Validation Report ⓘ

May 29, 2020 – 11:41 am BST

PDB ID : 1KIF
Title : D-AMINO ACID OXIDASE FROM PIG KIDNEY
Authors : Todone, F.; Mattevi, A.
Deposited on : 1996-01-19
Resolution : 2.60 Å(reported)

This is a Full wwPDB X-ray Structure Validation Report for a publicly released PDB entry.

We welcome your comments at validation@mail.wwpdb.org

A user guide is available at

<https://www.wwpdb.org/validation/2017/XrayValidationReportHelp>

with specific help available everywhere you see the ⓘ symbol.

The following versions of software and data (see [references ⓘ](#)) were used in the production of this report:

MolProbity : 4.02b-467
Mogul : 1.8.5 (274361), CSD as541be (2020)
Xtriage (Phenix) : **NOT EXECUTED**
EDS : **NOT EXECUTED**
buster-report : 1.1.7 (2018)
Percentile statistics : 20191225.v01 (using entries in the PDB archive December 25th 2019)
Ideal geometry (proteins) : Engh & Huber (2001)
Ideal geometry (DNA, RNA) : Parkinson et al. (1996)
Validation Pipeline (wwPDB-VP) : 2.11

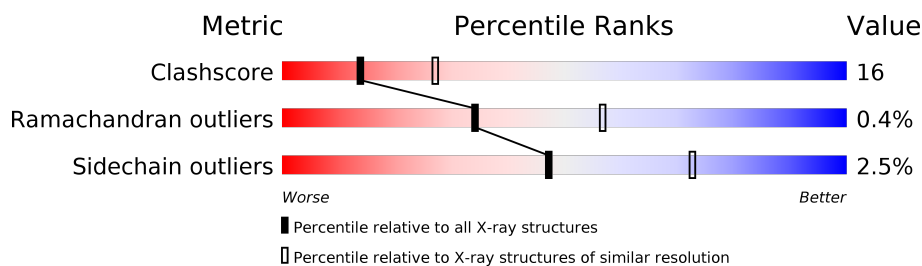
1 Overall quality at a glance

The following experimental techniques were used to determine the structure:

X-RAY DIFFRACTION

The reported resolution of this entry is 2.60 Å.

Percentile scores (ranging between 0-100) for global validation metrics of the entry are shown in the following graphic. The table shows the number of entries on which the scores are based.



Metric	Whole archive (#Entries)	Similar resolution (#Entries, resolution range(Å))
Clashscore	141614	3518 (2.60-2.60)
Ramachandran outliers	138981	3455 (2.60-2.60)
Sidechain outliers	138945	3455 (2.60-2.60)

The table below summarises the geometric issues observed across the polymeric chains and their fit to the electron density. The red, orange, yellow and green segments on the lower bar indicate the fraction of residues that contain outliers for ≥ 3 , 2, 1 and 0 types of geometric quality criteria respectively. A grey segment represents the fraction of residues that are not modelled. The numeric value for each fraction is indicated below the corresponding segment, with a dot representing fractions $\leq 5\%$.

Note EDS was not executed.

Mol	Chain	Length	Quality of chain
1	A	347	
1	B	347	
1	C	347	
1	D	347	
1	E	347	
1	F	347	
1	G	347	
1	H	347	

2 Entry composition

There are 4 unique types of molecules in this entry. The entry contains 22550 atoms, of which 0 are hydrogens and 0 are deuteriums.

In the tables below, the ZeroOcc column contains the number of atoms modelled with zero occupancy, the AltConf column contains the number of residues with at least one atom in alternate conformation and the Trace column contains the number of residues modelled with at most 2 atoms.

- Molecule 1 is a protein called D-AMINO ACID OXIDASE.

Mol	Chain	Residues	Atoms					ZeroOcc	AltConf	Trace
1	A	339	Total	C	N	O	S	56	0	0
			2720	1749	473	489	9			
1	B	339	Total	C	N	O	S	58	0	0
			2720	1749	473	489	9			
1	C	339	Total	C	N	O	S	57	0	0
			2720	1749	473	489	9			
1	D	339	Total	C	N	O	S	45	0	0
			2720	1749	473	489	9			
1	E	339	Total	C	N	O	S	55	0	0
			2720	1749	473	489	9			
1	F	339	Total	C	N	O	S	63	0	0
			2720	1749	473	489	9			
1	G	339	Total	C	N	O	S	69	0	0
			2720	1749	473	489	9			
1	H	339	Total	C	N	O	S	40	0	0
			2720	1749	473	489	9			

- Molecule 2 is FLAVIN-ADENINE DINUCLEOTIDE (three-letter code: FAD) (formula: $C_{27}H_{33}N_9O_{15}P_2$).



Mol	Chain	Residues	Atoms					ZeroOcc	AltConf
2	A	1	Total 53	C 27	N 9	O 15	P 2	0	0
2	B	1	Total 53	C 27	N 9	O 15	P 2	0	0
2	C	1	Total 53	C 27	N 9	O 15	P 2	0	0
2	D	1	Total 53	C 27	N 9	O 15	P 2	0	0
2	E	1	Total 53	C 27	N 9	O 15	P 2	0	0
2	F	1	Total 53	C 27	N 9	O 15	P 2	0	0
2	G	1	Total 53	C 27	N 9	O 15	P 2	0	0
2	H	1	Total 53	C 27	N 9	O 15	P 2	0	0

- Molecule 3 is BENZOIC ACID (three-letter code: BEZ) (formula: $C_7H_6O_2$).



Mol	Chain	Residues	Atoms			ZeroOcc	AltConf
3	A	1	Total	C	O	0	0
			9	7	2		
3	B	1	Total	C	O	0	0
			9	7	2		
3	C	1	Total	C	O	0	0
			9	7	2		
3	D	1	Total	C	O	0	0
			9	7	2		
3	E	1	Total	C	O	0	0
			9	7	2		
3	F	1	Total	C	O	0	0
			9	7	2		
3	G	1	Total	C	O	0	0
			9	7	2		
3	H	1	Total	C	O	0	0
			9	7	2		

- Molecule 4 is water.

Mol	Chain	Residues	Atoms		ZeroOcc	AltConf
4	A	51	Total	O	0	0
			51	51		
4	B	31	Total	O	0	0
			31	31		
4	C	25	Total	O	0	0
			25	25		
4	D	53	Total	O	0	0
			53	53		

Continued on next page...

Continued from previous page...

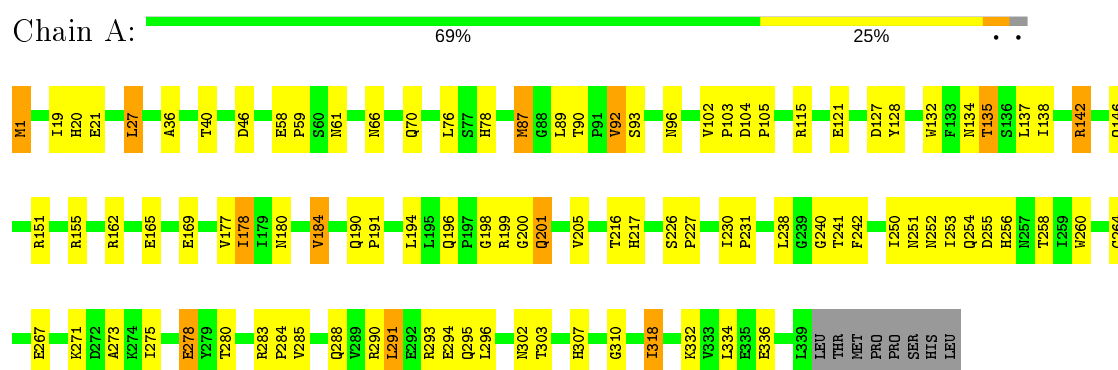
Mol	Chain	Residues	Atoms		ZeroOcc	AltConf
4	E	35	Total 35	O 35	0	0
4	F	42	Total 42	O 42	0	0
4	G	22	Total 22	O 22	0	0
4	H	35	Total 35	O 35	0	0

3 Residue-property plots

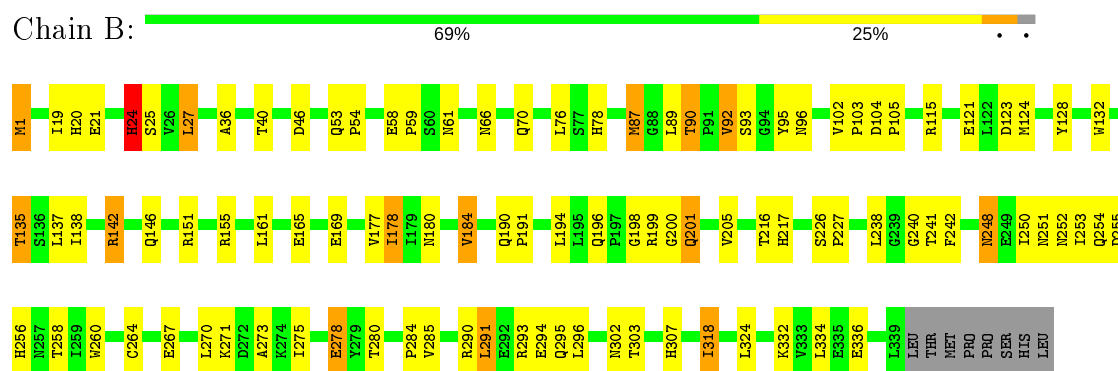
These plots are drawn for all protein, RNA and DNA chains in the entry. The first graphic for a chain summarises the proportions of the various outlier classes displayed in the second graphic. The second graphic shows the sequence view annotated by issues in geometry. Residues are color-coded according to the number of geometric quality criteria for which they contain at least one outlier: green = 0, yellow = 1, orange = 2 and red = 3 or more. Stretches of 2 or more consecutive residues without any outlier are shown as a green connector. Residues present in the sample, but not in the model, are shown in grey.

Note EDS was not executed.

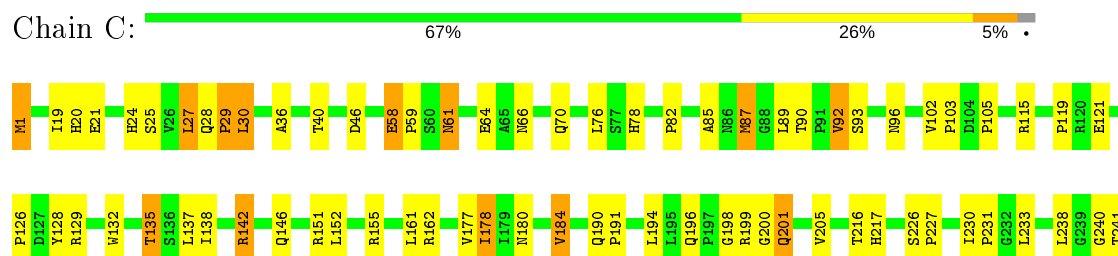
• Molecule 1: D-AMINO ACID OXIDASE

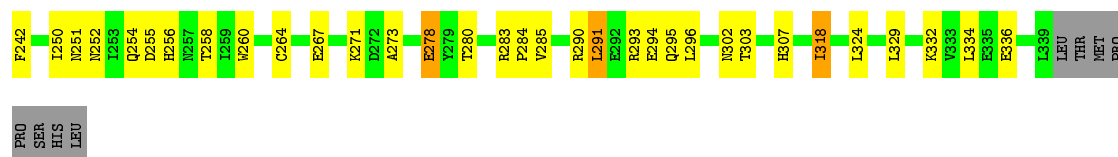


• Molecule 1: D-AMINO ACID OXIDASE

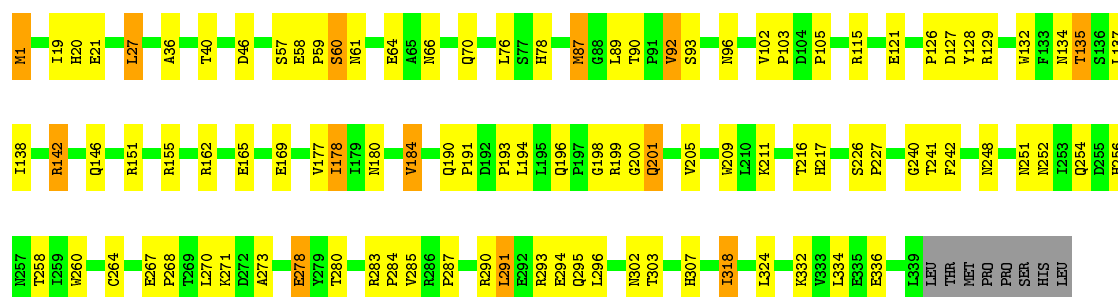


• Molecule 1: D-AMINO ACID OXIDASE

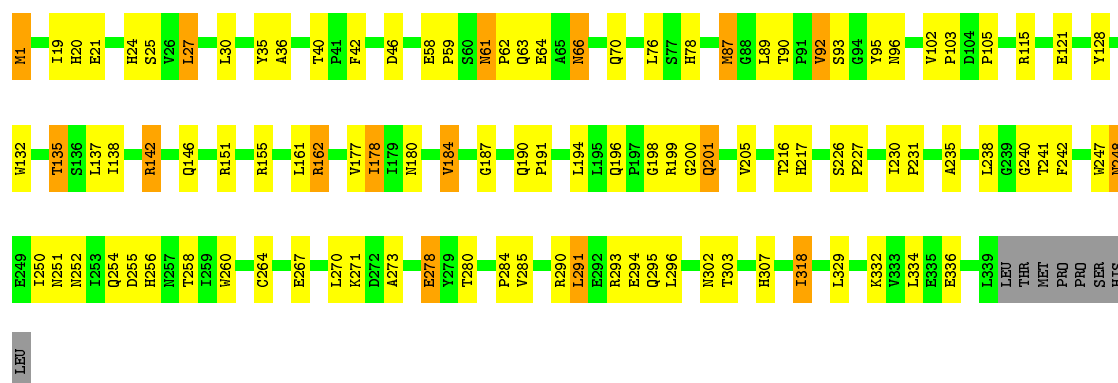




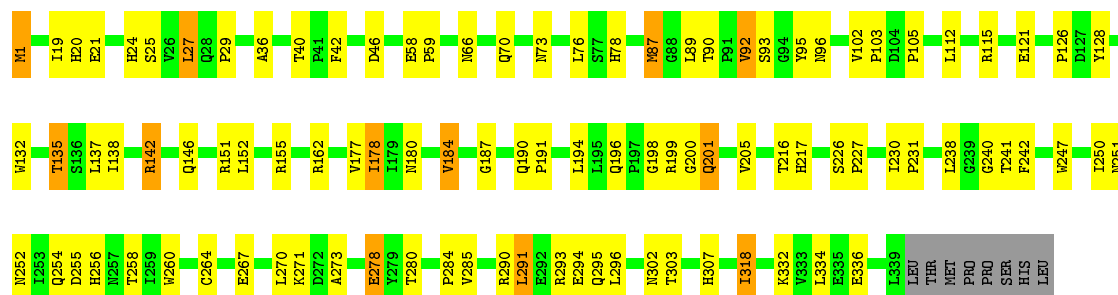
• Molecule 1: D-AMINO ACID OXIDASE



• Molecule 1: D-AMINO ACID OXIDASE

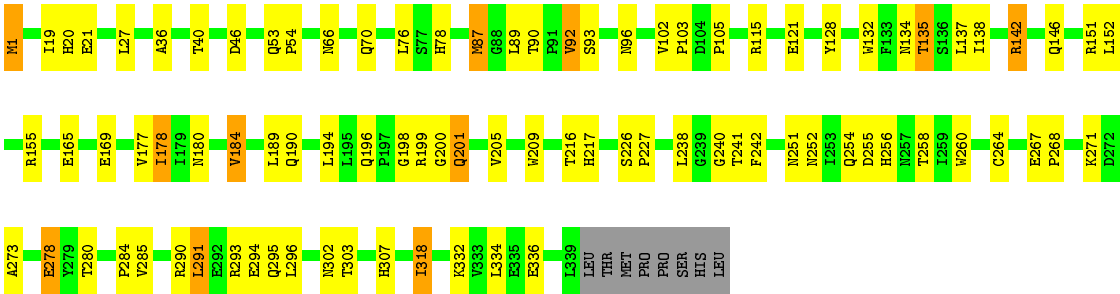


• Molecule 1: D-AMINO ACID OXIDASE

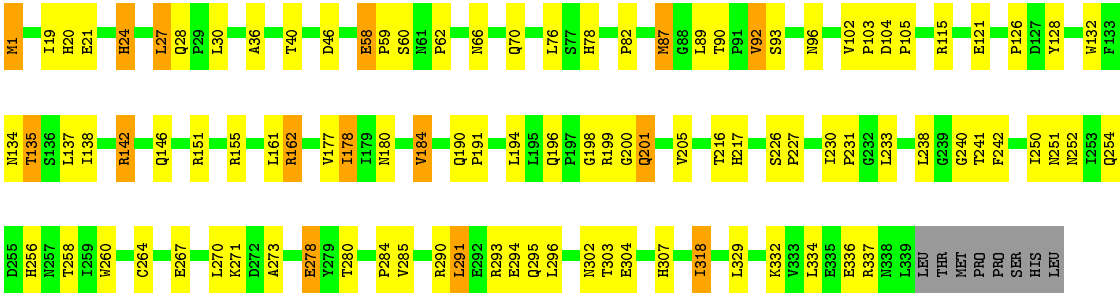


• Molecule 1: D-AMINO ACID OXIDASE





• Molecule 1: D-AMINO ACID OXIDASE



4 Data and refinement statistics

Xtriage (Phenix) and EDS were not executed - this section is therefore incomplete.

Property	Value	Source
Space group	C 2 2 21	Depositor
Cell constants a, b, c, α , β , γ	326.48Å 138.10Å 200.85Å 90.00° 90.00° 90.00°	Depositor
Resolution (Å)	20.00 – 2.60	Depositor
% Data completeness (in resolution range)	(Not available) (20.00-2.60)	Depositor
R_{merge}	0.10	Depositor
R_{sym}	(Not available)	Depositor
Refinement program	TNT	Depositor
R, R_{free}	(Not available) , (Not available)	Depositor
Estimated twinning fraction	No twinning to report.	Xtriage
Total number of atoms	22550	wwPDB-VP
Average B, all atoms (Å ²)	34.0	wwPDB-VP

5 Model quality

5.1 Standard geometry

Bond lengths and bond angles in the following residue types are not validated in this section: BEZ, FAD

The Z score for a bond length (or angle) is the number of standard deviations the observed value is removed from the expected value. A bond length (or angle) with $|Z| > 5$ is considered an outlier worth inspection. RMSZ is the root-mean-square of all Z scores of the bond lengths (or angles).

Mol	Chain	Bond lengths		Bond angles	
		RMSZ	$\# Z > 5$	RMSZ	$\# Z > 5$
1	A	0.59	0/2796	1.29	19/3808 (0.5%)
1	B	0.59	0/2796	1.29	19/3808 (0.5%)
1	C	0.59	0/2796	1.30	25/3808 (0.7%)
1	D	0.61	0/2796	1.32	24/3808 (0.6%)
1	E	0.60	0/2796	1.29	21/3808 (0.6%)
1	F	0.60	0/2796	1.29	19/3808 (0.5%)
1	G	0.59	0/2796	1.28	18/3808 (0.5%)
1	H	0.62	0/2796	1.31	24/3808 (0.6%)
All	All	0.60	0/22368	1.30	169/30464 (0.6%)

There are no bond length outliers.

All (169) bond angle outliers are listed below:

Mol	Chain	Res	Type	Atoms	Z	Observed(°)	Ideal(°)
1	C	162	ARG	NE-CZ-NH2	9.19	124.89	120.30
1	F	1	MET	CB-CA-C	-8.81	92.77	110.40
1	H	1	MET	CB-CA-C	-8.81	92.79	110.40
1	C	1	MET	CB-CA-C	-8.81	92.79	110.40
1	G	1	MET	CB-CA-C	-8.81	92.79	110.40
1	D	1	MET	CB-CA-C	-8.80	92.79	110.40
1	B	1	MET	CB-CA-C	-8.80	92.80	110.40
1	E	1	MET	CB-CA-C	-8.79	92.81	110.40
1	A	1	MET	CB-CA-C	-8.79	92.82	110.40
1	D	126	PRO	C-N-CA	-8.16	101.30	121.70
1	F	1	MET	CB-CG-SD	-7.46	90.03	112.40
1	G	1	MET	CB-CG-SD	-7.45	90.06	112.40
1	B	1	MET	CB-CG-SD	-7.45	90.06	112.40
1	C	1	MET	CB-CG-SD	-7.45	90.06	112.40
1	A	1	MET	CB-CG-SD	-7.44	90.07	112.40
1	E	1	MET	CB-CG-SD	-7.44	90.08	112.40

Continued on next page...

Continued from previous page...

Mol	Chain	Res	Type	Atoms	Z	Observed(°)	Ideal(°)
1	H	1	MET	CB-CG-SD	-7.44	90.08	112.40
1	D	1	MET	CB-CG-SD	-7.43	90.11	112.40
1	F	90	THR	N-CA-CB	7.24	124.05	110.30
1	B	90	THR	N-CA-CB	7.23	124.04	110.30
1	D	90	THR	N-CA-CB	7.22	124.03	110.30
1	E	90	THR	N-CA-CB	7.22	124.03	110.30
1	G	90	THR	N-CA-CB	7.22	124.02	110.30
1	A	90	THR	N-CA-CB	7.21	124.01	110.30
1	H	90	THR	N-CA-CB	7.21	124.00	110.30
1	C	90	THR	N-CA-CB	7.21	124.00	110.30
1	E	162	ARG	CB-CA-C	-7.09	96.22	110.40
1	D	248	ASN	CB-CA-C	-7.05	96.30	110.40
1	H	28	GLN	CB-CA-C	6.85	124.09	110.40
1	H	162	ARG	CB-CG-CD	-6.64	94.33	111.60
1	H	27	LEU	CA-CB-CG	-6.64	100.03	115.30
1	D	27	LEU	CA-CB-CG	-6.63	100.04	115.30
1	G	27	LEU	CA-CB-CG	-6.63	100.05	115.30
1	A	27	LEU	CA-CB-CG	-6.63	100.06	115.30
1	C	27	LEU	CA-CB-CG	-6.62	100.08	115.30
1	F	27	LEU	CA-CB-CG	-6.62	100.08	115.30
1	E	27	LEU	CA-CB-CG	-6.61	100.09	115.30
1	B	27	LEU	CA-CB-CG	-6.61	100.09	115.30
1	C	89	LEU	CB-CA-C	-6.45	97.94	110.20
1	C	303	THR	N-CA-C	-6.45	93.58	111.00
1	E	303	THR	N-CA-C	-6.45	93.58	111.00
1	F	89	LEU	CB-CA-C	-6.45	97.94	110.20
1	A	303	THR	N-CA-C	-6.45	93.59	111.00
1	E	89	LEU	CB-CA-C	-6.44	97.96	110.20
1	G	89	LEU	CB-CA-C	-6.44	97.96	110.20
1	B	89	LEU	CB-CA-C	-6.44	97.97	110.20
1	F	303	THR	N-CA-C	-6.44	93.61	111.00
1	H	303	THR	N-CA-C	-6.44	93.61	111.00
1	D	89	LEU	CB-CA-C	-6.44	97.97	110.20
1	D	303	THR	N-CA-C	-6.44	93.62	111.00
1	H	89	LEU	CB-CA-C	-6.44	97.97	110.20
1	B	303	THR	N-CA-C	-6.43	93.64	111.00
1	G	303	THR	N-CA-C	-6.43	93.64	111.00
1	A	89	LEU	CB-CA-C	-6.43	97.99	110.20
1	H	92	VAL	CB-CA-C	-6.33	99.38	111.40
1	E	92	VAL	CB-CA-C	-6.33	99.38	111.40
1	H	162	ARG	NE-CZ-NH1	-6.33	117.14	120.30
1	B	92	VAL	CB-CA-C	-6.32	99.38	111.40

Continued on next page...

Continued from previous page...

Mol	Chain	Res	Type	Atoms	Z	Observed(°)	Ideal(°)
1	D	92	VAL	CB-CA-C	-6.32	99.39	111.40
1	C	92	VAL	CB-CA-C	-6.31	99.41	111.40
1	G	92	VAL	CB-CA-C	-6.31	99.42	111.40
1	A	92	VAL	CB-CA-C	-6.30	99.43	111.40
1	F	92	VAL	CB-CA-C	-6.30	99.43	111.40
1	D	127	ASP	CB-CA-C	6.16	122.71	110.40
1	D	302	ASN	N-CA-C	-6.12	94.46	111.00
1	A	302	ASN	N-CA-C	-6.11	94.50	111.00
1	B	302	ASN	N-CA-C	-6.11	94.51	111.00
1	E	302	ASN	N-CA-C	-6.11	94.51	111.00
1	H	302	ASN	N-CA-C	-6.10	94.52	111.00
1	C	302	ASN	N-CA-C	-6.10	94.52	111.00
1	G	302	ASN	N-CA-C	-6.10	94.52	111.00
1	F	302	ASN	N-CA-C	-6.10	94.53	111.00
1	H	24	HIS	CB-CA-C	5.95	122.30	110.40
1	H	58	GLU	CB-CA-C	5.93	122.27	110.40
1	C	129	ARG	CB-CA-C	-5.85	98.70	110.40
1	C	271	LYS	N-CA-CB	-5.79	100.19	110.60
1	E	271	LYS	N-CA-CB	-5.78	100.20	110.60
1	B	271	LYS	N-CA-CB	-5.78	100.20	110.60
1	A	271	LYS	N-CA-CB	-5.77	100.21	110.60
1	G	271	LYS	N-CA-CB	-5.77	100.21	110.60
1	H	162	ARG	NE-CZ-NH2	5.77	123.18	120.30
1	H	271	LYS	N-CA-CB	-5.77	100.22	110.60
1	D	271	LYS	N-CA-CB	-5.77	100.22	110.60
1	F	271	LYS	N-CA-CB	-5.76	100.22	110.60
1	A	162	ARG	CB-CA-C	-5.68	99.04	110.40
1	F	162	ARG	NE-CZ-NH2	-5.68	117.46	120.30
1	E	248	ASN	N-CA-CB	-5.57	100.58	110.60
1	E	198	GLY	N-CA-C	-5.56	99.21	113.10
1	F	198	GLY	N-CA-C	-5.56	99.21	113.10
1	A	198	GLY	N-CA-C	-5.56	99.21	113.10
1	C	198	GLY	N-CA-C	-5.55	99.22	113.10
1	F	76	LEU	CB-CA-C	-5.55	99.65	110.20
1	G	76	LEU	CB-CA-C	-5.55	99.66	110.20
1	B	76	LEU	CB-CA-C	-5.55	99.66	110.20
1	G	198	GLY	N-CA-C	-5.55	99.23	113.10
1	H	198	GLY	N-CA-C	-5.54	99.24	113.10
1	D	198	GLY	N-CA-C	-5.54	99.25	113.10
1	H	76	LEU	CB-CA-C	-5.54	99.67	110.20
1	B	198	GLY	N-CA-C	-5.54	99.25	113.10
1	A	76	LEU	CB-CA-C	-5.54	99.68	110.20

Continued on next page...

Continued from previous page...

Mol	Chain	Res	Type	Atoms	Z	Observed(°)	Ideal(°)
1	C	162	ARG	NE-CZ-NH1	-5.53	117.53	120.30
1	D	76	LEU	CB-CA-C	-5.52	99.71	110.20
1	E	76	LEU	CB-CA-C	-5.52	99.71	110.20
1	C	76	LEU	CB-CA-C	-5.52	99.72	110.20
1	E	1	MET	CA-CB-CG	5.46	122.58	113.30
1	D	1	MET	CA-CB-CG	5.46	122.58	113.30
1	C	58	GLU	CB-CA-C	5.46	121.31	110.40
1	G	1	MET	CA-CB-CG	5.45	122.56	113.30
1	A	1	MET	CA-CB-CG	5.44	122.55	113.30
1	B	1	MET	CA-CB-CG	5.44	122.55	113.30
1	C	1	MET	CA-CB-CG	5.43	122.53	113.30
1	H	1	MET	CA-CB-CG	5.43	122.53	113.30
1	F	1	MET	CA-CB-CG	5.42	122.51	113.30
1	G	278	GLU	CG-CD-OE2	-5.39	107.53	118.30
1	F	278	GLU	CG-CD-OE2	-5.38	107.53	118.30
1	H	278	GLU	CG-CD-OE2	-5.38	107.53	118.30
1	C	278	GLU	CG-CD-OE2	-5.38	107.54	118.30
1	E	278	GLU	CG-CD-OE2	-5.38	107.55	118.30
1	A	278	GLU	CG-CD-OE2	-5.37	107.56	118.30
1	B	278	GLU	CG-CD-OE2	-5.37	107.57	118.30
1	D	278	GLU	CG-CD-OE2	-5.37	107.57	118.30
1	D	162	ARG	CB-CA-C	-5.35	99.70	110.40
1	F	178	ILE	CB-CA-C	-5.33	100.95	111.60
1	C	178	ILE	CB-CA-C	-5.32	100.96	111.60
1	C	29	PRO	N-CA-C	-5.32	98.28	112.10
1	H	178	ILE	CB-CA-C	-5.31	100.99	111.60
1	A	178	ILE	CB-CA-C	-5.30	101.00	111.60
1	B	178	ILE	CB-CA-C	-5.30	101.00	111.60
1	D	178	ILE	CB-CA-C	-5.30	101.00	111.60
1	G	178	ILE	CB-CA-C	-5.30	101.00	111.60
1	E	178	ILE	CB-CA-C	-5.29	101.02	111.60
1	D	248	ASN	N-CA-CB	5.25	120.05	110.60
1	C	61	ASN	N-CA-CB	-5.21	101.21	110.60
1	G	201	GLN	CB-CA-C	-5.18	100.04	110.40
1	H	201	GLN	CB-CA-C	-5.17	100.06	110.40
1	F	201	GLN	CB-CA-C	-5.16	100.07	110.40
1	C	201	GLN	CB-CA-C	-5.15	100.11	110.40
1	D	201	GLN	CB-CA-C	-5.14	100.11	110.40
1	B	201	GLN	CB-CA-C	-5.14	100.12	110.40
1	E	66	ASN	CB-CA-C	-5.14	100.12	110.40
1	C	129	ARG	CG-CD-NE	-5.14	101.02	111.80
1	E	201	GLN	CB-CA-C	-5.13	100.14	110.40

Continued on next page...

Continued from previous page...

Mol	Chain	Res	Type	Atoms	Z	Observed(°)	Ideal(°)
1	B	24	HIS	CB-CA-C	-5.12	100.15	110.40
1	A	201	GLN	CB-CA-C	-5.12	100.16	110.40
1	G	87	MET	CB-CA-C	-5.09	100.22	110.40
1	D	87	MET	CB-CA-C	-5.08	100.23	110.40
1	F	87	MET	CB-CA-C	-5.08	100.23	110.40
1	H	318	ILE	CB-CA-C	-5.08	101.43	111.60
1	E	318	ILE	CB-CA-C	-5.08	101.44	111.60
1	A	318	ILE	CB-CA-C	-5.08	101.44	111.60
1	B	87	MET	CB-CA-C	-5.07	100.26	110.40
1	G	318	ILE	CB-CA-C	-5.07	101.46	111.60
1	D	137	LEU	CB-CA-C	-5.07	100.57	110.20
1	B	318	ILE	CB-CA-C	-5.07	101.46	111.60
1	F	318	ILE	CB-CA-C	-5.07	101.46	111.60
1	H	87	MET	CB-CA-C	-5.07	100.26	110.40
1	E	137	LEU	CB-CA-C	-5.06	100.58	110.20
1	A	87	MET	CB-CA-C	-5.06	100.28	110.40
1	A	137	LEU	CB-CA-C	-5.06	100.58	110.20
1	D	318	ILE	CB-CA-C	-5.06	101.48	111.60
1	F	137	LEU	CB-CA-C	-5.06	100.59	110.20
1	C	87	MET	CB-CA-C	-5.05	100.29	110.40
1	C	137	LEU	CB-CA-C	-5.05	100.60	110.20
1	C	318	ILE	CB-CA-C	-5.05	101.49	111.60
1	E	87	MET	CB-CA-C	-5.05	100.30	110.40
1	G	137	LEU	CB-CA-C	-5.05	100.60	110.20
1	B	137	LEU	CB-CA-C	-5.05	100.61	110.20
1	H	137	LEU	CB-CA-C	-5.04	100.63	110.20
1	D	57	SER	O-C-N	5.04	130.76	122.70

There are no chirality outliers.

There are no planarity outliers.

5.2 Too-close contacts ⓘ

In the following table, the Non-H and H(model) columns list the number of non-hydrogen atoms and hydrogen atoms in the chain respectively. The H(added) column lists the number of hydrogen atoms added and optimized by MolProbity. The Clashes column lists the number of clashes within the asymmetric unit, whereas Symm-Clashes lists symmetry related clashes.

Mol	Chain	Non-H	H(model)	H(added)	Clashes	Symm-Clashes
1	A	2720	0	2675	88	0
1	B	2720	0	2675	98	0

Continued on next page...

Continued from previous page...

Mol	Chain	Non-H	H(model)	H(added)	Clashes	Symm-Clashes
1	C	2720	0	2675	88	1
1	D	2720	0	2675	83	0
1	E	2720	0	2675	96	1
1	F	2720	0	2675	90	1
1	G	2720	0	2675	70	0
1	H	2720	0	2675	86	1
2	A	53	0	31	1	0
2	B	53	0	31	1	0
2	C	53	0	31	1	0
2	D	53	0	31	1	0
2	E	53	0	31	1	0
2	F	53	0	31	1	0
2	G	53	0	31	1	0
2	H	53	0	31	1	0
3	A	9	0	5	0	0
3	B	9	0	5	0	0
3	C	9	0	5	0	0
3	D	9	0	5	0	0
3	E	9	0	5	0	0
3	F	9	0	5	0	0
3	G	9	0	5	0	0
3	H	9	0	5	0	0
4	A	51	0	0	4	0
4	B	31	0	0	2	0
4	C	25	0	0	2	0
4	D	53	0	0	4	0
4	E	35	0	0	5	0
4	F	42	0	0	3	0
4	G	22	0	0	4	0
4	H	35	0	0	3	0
All	All	22550	0	21688	678	2

The all-atom clashscore is defined as the number of clashes found per 1000 atoms (including hydrogen atoms). The all-atom clashscore for this structure is 16.

All (678) close contacts within the same asymmetric unit are listed below, sorted by their clash magnitude.

Atom-1	Atom-2	Interatomic distance (Å)	Clash overlap (Å)
1:C:201:GLN:NE2	1:C:252:ASN:H	1.47	1.13
1:A:201:GLN:NE2	1:A:252:ASN:H	1.47	1.12
1:H:201:GLN:NE2	1:H:252:ASN:H	1.47	1.12

Continued on next page...

Continued from previous page...

Atom-1	Atom-2	Interatomic distance (Å)	Clash overlap (Å)
1:B:201:GLN:NE2	1:B:252:ASN:H	1.47	1.11
1:E:201:GLN:NE2	1:E:252:ASN:H	1.47	1.11
1:F:201:GLN:NE2	1:F:252:ASN:H	1.47	1.10
1:D:201:GLN:NE2	1:D:252:ASN:H	1.47	1.10
1:G:201:GLN:NE2	1:G:252:ASN:H	1.47	1.09
1:B:24:HIS:ND1	1:B:25:SER:N	2.12	0.98
1:H:92:VAL:HG21	1:H:138:ILE:HG13	1.48	0.95
1:D:180:ASN:HD22	1:D:307:HIS:HD2	1.14	0.95
1:F:92:VAL:HG21	1:F:138:ILE:HG13	1.48	0.95
1:G:180:ASN:HD22	1:G:307:HIS:HD2	1.14	0.95
1:A:180:ASN:HD22	1:A:307:HIS:HD2	1.14	0.95
1:A:92:VAL:HG21	1:A:138:ILE:HG13	1.48	0.95
1:E:180:ASN:HD22	1:E:307:HIS:HD2	1.14	0.94
1:C:92:VAL:HG21	1:C:138:ILE:HG13	1.49	0.94
1:H:180:ASN:HD22	1:H:307:HIS:HD2	1.15	0.94
1:B:180:ASN:HD22	1:B:307:HIS:HD2	1.14	0.94
1:D:92:VAL:HG21	1:D:138:ILE:HG13	1.49	0.94
1:C:180:ASN:HD22	1:C:307:HIS:HD2	1.14	0.94
1:E:92:VAL:HG21	1:E:138:ILE:HG13	1.48	0.92
1:G:92:VAL:HG21	1:G:138:ILE:HG13	1.48	0.92
1:F:180:ASN:HD22	1:F:307:HIS:HD2	1.14	0.92
1:H:21:GLU:HA	1:H:155:ARG:HH12	1.36	0.92
1:C:21:GLU:HA	1:C:155:ARG:HH12	1.35	0.91
1:F:21:GLU:HA	1:F:155:ARG:HH12	1.35	0.91
1:B:92:VAL:HG21	1:B:138:ILE:HG13	1.49	0.91
1:G:21:GLU:HA	1:G:155:ARG:HH12	1.36	0.91
1:A:21:GLU:HA	1:A:155:ARG:HH12	1.36	0.90
1:B:21:GLU:HA	1:B:155:ARG:HH12	1.35	0.90
1:D:21:GLU:HA	1:D:155:ARG:HH12	1.36	0.90
1:E:21:GLU:HA	1:E:155:ARG:HH12	1.36	0.89
1:C:61:ASN:HB3	1:C:64:GLU:HG3	1.55	0.88
1:E:21:GLU:HG3	1:E:155:ARG:HH22	1.41	0.86
1:F:21:GLU:HG3	1:F:155:ARG:HH22	1.41	0.85
1:G:201:GLN:HG2	1:G:280:THR:HG22	1.58	0.85
1:D:201:GLN:HG2	1:D:280:THR:HG22	1.58	0.85
1:A:21:GLU:HG3	1:A:155:ARG:HH22	1.41	0.85
1:H:201:GLN:HG2	1:H:280:THR:HG22	1.58	0.85
1:D:21:GLU:HG3	1:D:155:ARG:HH22	1.41	0.85
1:H:21:GLU:HG3	1:H:155:ARG:HH22	1.41	0.85
1:B:92:VAL:CG2	1:B:138:ILE:HG13	2.07	0.84
1:C:21:GLU:HG3	1:C:155:ARG:HH22	1.41	0.84

Continued on next page...

Continued from previous page...

Atom-1	Atom-2	Interatomic distance (Å)	Clash overlap (Å)
1:E:201:GLN:HG2	1:E:280:THR:HG22	1.58	0.84
1:G:21:GLU:HG3	1:G:155:ARG:HH22	1.41	0.84
1:A:165:GLU:HB3	1:A:169:GLU:OE1	1.78	0.84
1:A:92:VAL:CG2	1:A:138:ILE:HG13	2.07	0.84
1:B:21:GLU:HG3	1:B:155:ARG:HH22	1.41	0.83
1:D:92:VAL:CG2	1:D:138:ILE:HG13	2.08	0.83
1:G:201:GLN:NE2	1:G:252:ASN:N	2.27	0.83
1:H:92:VAL:CG2	1:H:138:ILE:HG13	2.07	0.83
1:C:92:VAL:CG2	1:C:138:ILE:HG13	2.07	0.83
1:B:201:GLN:HG2	1:B:280:THR:HG22	1.58	0.83
1:G:92:VAL:CG2	1:G:138:ILE:HG13	2.07	0.83
1:F:92:VAL:CG2	1:F:138:ILE:HG13	2.07	0.83
1:A:201:GLN:HG2	1:A:280:THR:HG22	1.58	0.83
1:E:92:VAL:CG2	1:E:138:ILE:HG13	2.07	0.83
1:F:201:GLN:HG2	1:F:280:THR:HG22	1.58	0.83
1:A:201:GLN:NE2	1:A:252:ASN:N	2.27	0.82
1:C:201:GLN:HG2	1:C:280:THR:HG22	1.58	0.82
1:B:201:GLN:NE2	1:B:252:ASN:N	2.27	0.82
1:C:201:GLN:NE2	1:C:252:ASN:N	2.27	0.82
1:F:201:GLN:NE2	1:F:252:ASN:N	2.27	0.82
1:C:256:HIS:ND1	1:C:278:GLU:OE2	2.13	0.82
1:A:256:HIS:ND1	1:A:278:GLU:OE2	2.13	0.82
1:D:201:GLN:NE2	1:D:252:ASN:N	2.27	0.82
1:G:256:HIS:ND1	1:G:278:GLU:OE2	2.13	0.81
1:B:102:VAL:HG13	1:B:103:PRO:HD2	1.63	0.81
1:H:256:HIS:ND1	1:H:278:GLU:OE2	2.13	0.81
1:E:256:HIS:ND1	1:E:278:GLU:OE2	2.13	0.81
1:C:102:VAL:HG13	1:C:103:PRO:HD2	1.63	0.81
1:E:201:GLN:NE2	1:E:252:ASN:N	2.27	0.81
1:G:102:VAL:HG13	1:G:103:PRO:HD2	1.63	0.81
1:F:102:VAL:HG13	1:F:103:PRO:HD2	1.63	0.80
1:F:256:HIS:ND1	1:F:278:GLU:OE2	2.13	0.80
1:B:256:HIS:ND1	1:B:278:GLU:OE2	2.13	0.80
1:C:21:GLU:HG3	1:C:155:ARG:NH2	1.97	0.80
1:E:21:GLU:HG3	1:E:155:ARG:NH2	1.97	0.80
1:D:256:HIS:ND1	1:D:278:GLU:OE2	2.13	0.80
1:B:21:GLU:HG3	1:B:155:ARG:NH2	1.97	0.80
1:H:201:GLN:NE2	1:H:252:ASN:N	2.27	0.80
1:H:21:GLU:HG3	1:H:155:ARG:NH2	1.97	0.79
1:H:102:VAL:HG13	1:H:103:PRO:HD2	1.63	0.79
1:B:201:GLN:HE22	1:B:252:ASN:H	1.31	0.79

Continued on next page...

Continued from previous page...

Atom-1	Atom-2	Interatomic distance (Å)	Clash overlap (Å)
1:E:102:VAL:HG13	1:E:103:PRO:HD2	1.63	0.79
1:D:102:VAL:HG13	1:D:103:PRO:HD2	1.63	0.79
1:G:54:PRO:O	4:G:371:HOH:O	1.99	0.79
1:D:21:GLU:HG3	1:D:155:ARG:NH2	1.96	0.79
1:A:102:VAL:HG13	1:A:103:PRO:HD2	1.63	0.79
1:F:201:GLN:HE22	1:F:252:ASN:H	1.31	0.79
1:G:21:GLU:HG3	1:G:155:ARG:NH2	1.97	0.79
1:D:201:GLN:HE22	1:D:252:ASN:H	1.31	0.79
1:A:21:GLU:HG3	1:A:155:ARG:NH2	1.97	0.78
1:E:201:GLN:HE22	1:E:252:ASN:H	1.30	0.78
1:F:21:GLU:HG3	1:F:155:ARG:NH2	1.97	0.78
1:G:201:GLN:HE22	1:G:252:ASN:H	1.30	0.78
1:G:180:ASN:HD22	1:G:307:HIS:CD2	2.01	0.78
1:A:201:GLN:HE22	1:A:252:ASN:H	1.30	0.77
1:B:180:ASN:HD22	1:B:307:HIS:CD2	2.01	0.77
1:H:21:GLU:HA	1:H:155:ARG:NH1	2.00	0.77
1:C:21:GLU:HA	1:C:155:ARG:NH1	2.00	0.77
1:F:21:GLU:HA	1:F:155:ARG:NH1	2.00	0.77
1:D:21:GLU:HA	1:D:155:ARG:NH1	2.00	0.77
1:A:180:ASN:HD22	1:A:307:HIS:CD2	2.01	0.77
1:F:180:ASN:HD22	1:F:307:HIS:CD2	2.01	0.77
1:H:180:ASN:HD22	1:H:307:HIS:CD2	2.02	0.76
1:E:180:ASN:HD22	1:E:307:HIS:CD2	2.01	0.76
1:C:180:ASN:HD22	1:C:307:HIS:CD2	2.01	0.76
1:H:201:GLN:HE22	1:H:252:ASN:H	1.31	0.76
1:B:21:GLU:HA	1:B:155:ARG:NH1	2.00	0.76
1:E:21:GLU:HA	1:E:155:ARG:NH1	2.00	0.76
1:G:21:GLU:HA	1:G:155:ARG:NH1	2.00	0.76
1:A:21:GLU:HA	1:A:155:ARG:NH1	2.00	0.76
1:D:193:PRO:HG2	1:F:73:ASN:HB2	1.68	0.75
1:F:58:GLU:HG3	1:F:59:PRO:HD2	1.70	0.74
1:E:61:ASN:HD22	1:E:62:PRO:N	1.85	0.74
1:C:201:GLN:HE22	1:C:252:ASN:H	1.31	0.74
1:H:278:GLU:HG3	4:H:374:HOH:O	1.87	0.74
1:D:61:ASN:HB2	1:D:64:GLU:HG3	1.70	0.73
1:D:180:ASN:HD22	1:D:307:HIS:CD2	2.01	0.73
1:D:58:GLU:HB3	1:D:59:PRO:HD2	1.71	0.72
1:B:58:GLU:CG	1:B:59:PRO:HD2	2.21	0.71
1:A:61:ASN:ND2	1:A:288:GLN:OE1	2.24	0.71
1:A:201:GLN:HE22	1:A:252:ASN:N	1.89	0.71
1:B:295:GLN:O	1:B:296:LEU:HD23	1.92	0.70

Continued on next page...

Continued from previous page...

Atom-1	Atom-2	Interatomic distance (Å)	Clash overlap (Å)
1:D:295:GLN:O	1:D:296:LEU:HD23	1.92	0.69
1:D:134:ASN:ND2	4:D:381:HOH:O	2.24	0.69
1:G:201:GLN:HE22	1:G:252:ASN:N	1.89	0.69
1:B:123:ASP:OD2	1:D:287:PRO:HB3	1.93	0.69
1:G:66:ASN:O	1:G:70:GLN:HG3	1.93	0.69
1:F:295:GLN:O	1:F:296:LEU:HD23	1.92	0.69
1:G:295:GLN:O	1:G:296:LEU:HD23	1.92	0.69
1:C:201:GLN:HE22	1:C:252:ASN:N	1.89	0.69
1:D:201:GLN:HE22	1:D:252:ASN:N	1.89	0.68
1:E:295:GLN:O	1:E:296:LEU:HD23	1.92	0.68
1:B:201:GLN:HE22	1:B:252:ASN:N	1.89	0.68
1:C:295:GLN:O	1:C:296:LEU:HD23	1.92	0.68
1:A:295:GLN:O	1:A:296:LEU:HD23	1.92	0.68
1:F:278:GLU:HG3	4:F:364:HOH:O	1.93	0.68
1:H:295:GLN:O	1:H:296:LEU:HD23	1.92	0.68
1:A:58:GLU:CG	1:A:59:PRO:HD2	2.24	0.67
1:F:58:GLU:CG	1:F:59:PRO:HD2	2.27	0.65
1:D:66:ASN:O	1:D:70:GLN:HG3	1.95	0.65
1:F:201:GLN:HE21	1:F:252:ASN:H	1.44	0.65
1:A:253:ILE:HA	1:F:42:PHE:CE2	2.32	0.65
1:H:134:ASN:ND2	4:H:355:HOH:O	2.29	0.65
1:F:201:GLN:HE22	1:F:252:ASN:N	1.89	0.64
1:B:254:GLN:O	1:B:258:THR:HG23	1.98	0.64
1:C:201:GLN:HE21	1:C:252:ASN:H	1.44	0.64
1:F:254:GLN:O	1:F:258:THR:HG23	1.98	0.64
1:A:58:GLU:HG3	1:A:59:PRO:HD2	1.77	0.64
1:E:254:GLN:O	1:E:258:THR:HG23	1.98	0.64
1:B:58:GLU:HG3	1:B:59:PRO:HD2	1.80	0.64
1:D:254:GLN:O	1:D:258:THR:HG23	1.98	0.64
1:E:93:SER:OG	1:E:135:THR:HB	1.98	0.64
1:H:201:GLN:HE22	1:H:252:ASN:N	1.89	0.64
1:A:254:GLN:O	1:A:258:THR:HG23	1.98	0.64
1:D:93:SER:OG	1:D:135:THR:HB	1.98	0.64
1:G:165:GLU:HB3	1:G:169:GLU:OE1	1.98	0.64
1:C:254:GLN:O	1:C:258:THR:HG23	1.98	0.63
1:G:93:SER:OG	1:G:135:THR:HB	1.98	0.63
1:C:216:THR:HB	1:C:227:PRO:O	1.99	0.63
1:G:254:GLN:O	1:G:258:THR:HG23	1.98	0.63
1:F:93:SER:OG	1:F:135:THR:HB	1.98	0.63
1:B:93:SER:OG	1:B:135:THR:HB	1.98	0.63
1:B:250:ILE:HD11	1:E:250:ILE:HD13	1.80	0.63

Continued on next page...

Continued from previous page...

Atom-1	Atom-2	Interatomic distance (Å)	Clash overlap (Å)
1:H:201:GLN:HE21	1:H:252:ASN:H	1.44	0.63
1:B:216:THR:HB	1:B:227:PRO:O	1.99	0.63
1:A:93:SER:OG	1:A:135:THR:HB	1.98	0.62
1:E:216:THR:HB	1:E:227:PRO:O	1.99	0.62
1:G:216:THR:HB	1:G:227:PRO:O	1.99	0.62
1:A:201:GLN:HE21	1:A:252:ASN:H	1.44	0.62
1:C:93:SER:OG	1:C:135:THR:HB	1.98	0.62
1:B:250:ILE:HD11	1:E:250:ILE:CD1	2.29	0.62
1:F:216:THR:HB	1:F:227:PRO:O	1.99	0.62
1:H:93:SER:OG	1:H:135:THR:HB	1.98	0.62
1:H:254:GLN:O	1:H:258:THR:HG23	1.98	0.62
1:H:216:THR:HB	1:H:227:PRO:O	1.99	0.62
1:D:216:THR:HB	1:D:227:PRO:O	1.99	0.62
1:E:201:GLN:HE22	1:E:252:ASN:N	1.89	0.62
1:D:201:GLN:HE21	1:D:252:ASN:H	1.44	0.61
1:A:216:THR:HB	1:A:227:PRO:O	1.99	0.61
1:C:28:GLN:N	1:C:29:PRO:HD2	2.14	0.61
1:D:278:GLU:HG3	4:D:361:HOH:O	2.01	0.61
1:H:126:PRO:HD2	4:H:358:HOH:O	2.01	0.61
1:H:304:GLU:HG2	1:H:337:ARG:NH2	2.15	0.61
1:G:19:ILE:HG22	1:G:20:HIS:N	2.16	0.60
1:H:58:GLU:CG	1:H:59:PRO:HD2	2.31	0.60
1:C:105:PRO:HG3	1:C:132:TRP:CH2	2.37	0.60
1:G:189:LEU:HB2	4:G:368:HOH:O	2.00	0.60
1:G:105:PRO:HG3	1:G:132:TRP:CH2	2.37	0.60
1:B:19:ILE:HG22	1:B:20:HIS:N	2.16	0.60
1:H:105:PRO:HG3	1:H:132:TRP:CH2	2.37	0.60
1:B:105:PRO:HG3	1:B:132:TRP:CH2	2.37	0.60
1:D:105:PRO:HG3	1:D:132:TRP:CH2	2.37	0.60
1:F:105:PRO:HG3	1:F:132:TRP:CH2	2.37	0.60
1:F:19:ILE:HG22	1:F:20:HIS:N	2.16	0.59
1:H:19:ILE:HG22	1:H:20:HIS:N	2.16	0.59
1:A:250:ILE:HD11	1:F:250:ILE:HD13	1.84	0.59
1:G:201:GLN:HE21	1:G:252:ASN:H	1.44	0.59
1:A:291:LEU:HA	1:A:307:HIS:O	2.03	0.59
1:G:291:LEU:HA	1:G:307:HIS:O	2.03	0.59
1:A:105:PRO:HG3	1:A:132:TRP:CH2	2.37	0.59
1:C:19:ILE:HG22	1:C:20:HIS:N	2.16	0.59
1:D:19:ILE:HG22	1:D:20:HIS:N	2.16	0.59
1:A:19:ILE:HG22	1:A:20:HIS:N	2.16	0.59
1:G:142:ARG:O	1:G:146:GLN:HG3	2.03	0.59

Continued on next page...

Continued from previous page...

Atom-1	Atom-2	Interatomic distance (Å)	Clash overlap (Å)
1:C:205:VAL:HG13	1:C:273:ALA:HB1	1.85	0.59
1:D:205:VAL:HG13	1:D:273:ALA:HB1	1.85	0.59
1:E:142:ARG:O	1:E:146:GLN:HG3	2.03	0.59
1:C:291:LEU:HA	1:C:307:HIS:O	2.03	0.59
1:D:291:LEU:HA	1:D:307:HIS:O	2.03	0.59
1:E:105:PRO:HG3	1:E:132:TRP:CH2	2.37	0.59
1:E:205:VAL:HG13	1:E:273:ALA:HB1	1.85	0.59
1:H:291:LEU:HA	1:H:307:HIS:O	2.03	0.59
1:B:291:LEU:HA	1:B:307:HIS:O	2.03	0.58
1:D:142:ARG:O	1:D:146:GLN:HG3	2.03	0.58
1:E:184:VAL:HG13	1:E:284:PRO:HA	1.86	0.58
1:F:291:LEU:HA	1:F:307:HIS:O	2.03	0.58
1:H:184:VAL:HG13	1:H:284:PRO:HA	1.85	0.58
1:A:142:ARG:O	1:A:146:GLN:HG3	2.03	0.58
1:E:19:ILE:HG22	1:E:20:HIS:N	2.16	0.58
1:C:142:ARG:O	1:C:146:GLN:HG3	2.03	0.58
1:C:184:VAL:HG13	1:C:284:PRO:HA	1.86	0.58
1:B:205:VAL:HG13	1:B:273:ALA:HB1	1.85	0.58
1:B:24:HIS:CE1	1:B:25:SER:HB3	2.38	0.58
1:C:126:PRO:HD2	4:C:360:HOH:O	2.02	0.58
1:D:184:VAL:HG13	1:D:284:PRO:HA	1.86	0.58
1:F:205:VAL:HG13	1:F:273:ALA:HB1	1.85	0.58
1:E:61:ASN:ND2	1:E:63:GLN:H	2.01	0.58
1:G:184:VAL:HG13	1:G:284:PRO:HA	1.86	0.58
1:H:205:VAL:HG13	1:H:273:ALA:HB1	1.85	0.58
1:B:184:VAL:HG13	1:B:284:PRO:HA	1.86	0.58
1:H:142:ARG:O	1:H:146:GLN:HG3	2.03	0.58
1:B:201:GLN:HE21	1:B:252:ASN:H	1.44	0.58
1:A:205:VAL:HG13	1:A:273:ALA:HB1	1.85	0.58
1:E:201:GLN:HE21	1:E:252:ASN:H	1.44	0.57
1:E:291:LEU:HA	1:E:307:HIS:O	2.03	0.57
1:G:205:VAL:HG13	1:G:273:ALA:HB1	1.85	0.57
1:F:142:ARG:O	1:F:146:GLN:HG3	2.03	0.57
1:F:184:VAL:HG13	1:F:284:PRO:HA	1.85	0.57
1:A:184:VAL:HG13	1:A:284:PRO:HA	1.85	0.57
1:E:58:GLU:HG2	1:E:59:PRO:HD2	1.86	0.57
1:B:58:GLU:HG2	1:B:59:PRO:HD2	1.86	0.57
1:C:105:PRO:HG3	1:C:132:TRP:CZ3	2.40	0.57
1:A:105:PRO:HG3	1:A:132:TRP:CZ3	2.40	0.57
1:F:190:GLN:NE2	1:F:290:ARG:HH12	2.03	0.57
1:H:105:PRO:HG3	1:H:132:TRP:CZ3	2.40	0.57

Continued on next page...

Continued from previous page...

Atom-1	Atom-2	Interatomic distance (Å)	Clash overlap (Å)
1:H:190:GLN:NE2	1:H:290:ARG:HH12	2.03	0.57
1:A:190:GLN:NE2	1:A:290:ARG:HH12	2.03	0.57
1:B:190:GLN:NE2	1:B:290:ARG:HH12	2.03	0.57
1:D:105:PRO:HG3	1:D:132:TRP:CZ3	2.40	0.57
1:B:105:PRO:HG3	1:B:132:TRP:CZ3	2.40	0.57
1:D:190:GLN:NE2	1:D:290:ARG:HH12	2.03	0.57
1:E:190:GLN:NE2	1:E:290:ARG:HH12	2.03	0.57
1:B:142:ARG:O	1:B:146:GLN:HG3	2.03	0.56
1:G:105:PRO:HG3	1:G:132:TRP:CZ3	2.40	0.56
1:E:105:PRO:HG3	1:E:132:TRP:CZ3	2.40	0.56
1:A:134:ASN:ND2	4:A:386:HOH:O	2.38	0.56
1:A:275:ILE:HD12	1:F:142:ARG:HH21	1.70	0.56
1:A:293:ARG:NH2	1:A:336:GLU:OE1	2.39	0.56
1:G:190:GLN:NE2	1:G:290:ARG:HH12	2.03	0.56
1:E:293:ARG:NH2	1:E:336:GLU:OE1	2.39	0.56
1:G:293:ARG:NH2	1:G:336:GLU:OE1	2.39	0.56
1:F:105:PRO:HG3	1:F:132:TRP:CZ3	2.40	0.56
1:D:293:ARG:NH2	1:D:336:GLU:OE1	2.39	0.56
1:F:293:ARG:NH2	1:F:336:GLU:OE1	2.39	0.56
1:C:190:GLN:NE2	1:C:290:ARG:HH12	2.03	0.55
1:A:250:ILE:HD11	1:F:250:ILE:CD1	2.36	0.55
1:B:293:ARG:NH2	1:B:336:GLU:OE1	2.39	0.55
1:B:20:HIS:CE1	1:B:155:ARG:HD3	2.42	0.55
1:B:248:ASN:N	1:B:248:ASN:OD1	2.37	0.55
1:H:293:ARG:NH2	1:H:336:GLU:OE1	2.39	0.55
1:H:332:LYS:O	1:H:336:GLU:HG3	2.07	0.55
1:C:293:ARG:NH2	1:C:336:GLU:OE1	2.39	0.55
1:D:332:LYS:O	1:D:336:GLU:HG3	2.07	0.55
1:F:20:HIS:CE1	1:F:155:ARG:HD3	2.42	0.55
1:H:20:HIS:CE1	1:H:155:ARG:HD3	2.42	0.55
1:C:20:HIS:CE1	1:C:155:ARG:HD3	2.42	0.55
1:E:20:HIS:CE1	1:E:155:ARG:HD3	2.42	0.55
1:B:250:ILE:CD1	1:E:250:ILE:HD13	2.37	0.55
1:D:20:HIS:CE1	1:D:155:ARG:HD3	2.42	0.55
1:F:58:GLU:HG3	1:F:59:PRO:CD	2.37	0.55
1:G:332:LYS:O	1:G:336:GLU:HG3	2.07	0.55
1:B:96:ASN:OD1	1:B:217:HIS:HE1	1.90	0.54
1:C:332:LYS:O	1:C:336:GLU:HG3	2.07	0.54
1:D:96:ASN:OD1	1:D:217:HIS:HE1	1.91	0.54
1:F:96:ASN:OD1	1:F:217:HIS:HE1	1.91	0.54
1:B:332:LYS:O	1:B:336:GLU:HG3	2.07	0.54

Continued on next page...

Continued from previous page...

Atom-1	Atom-2	Interatomic distance (Å)	Clash overlap (Å)
1:G:20:HIS:CE1	1:G:155:ARG:HD3	2.42	0.54
1:A:20:HIS:CE1	1:A:155:ARG:HD3	2.42	0.54
1:A:66:ASN:O	1:A:70:GLN:HG3	2.07	0.54
1:B:196:GLN:HG2	4:B:373:HOH:O	2.06	0.54
1:F:200:GLY:HA2	1:F:241:THR:OG1	2.08	0.54
1:C:200:GLY:HA2	1:C:241:THR:OG1	2.08	0.54
1:E:96:ASN:OD1	1:E:217:HIS:HE1	1.91	0.54
1:E:332:LYS:O	1:E:336:GLU:HG3	2.07	0.54
1:E:58:GLU:HG2	1:E:59:PRO:CD	2.37	0.54
1:H:96:ASN:OD1	1:H:217:HIS:HE1	1.91	0.54
1:E:200:GLY:HA2	1:E:241:THR:OG1	2.08	0.54
1:C:96:ASN:OD1	1:C:217:HIS:HE1	1.91	0.54
1:F:1:MET:N	1:F:29:PRO:O	2.41	0.54
1:F:93:SER:HA	1:F:135:THR:HA	1.89	0.54
1:G:102:VAL:CG1	1:G:103:PRO:HD2	2.37	0.54
1:H:93:SER:HA	1:H:135:THR:HA	1.89	0.54
1:H:304:GLU:HG2	1:H:337:ARG:HH21	1.70	0.54
1:A:93:SER:HA	1:A:135:THR:HA	1.89	0.54
1:B:200:GLY:HA2	1:B:241:THR:OG1	2.08	0.54
1:F:332:LYS:O	1:F:336:GLU:HG3	2.07	0.54
1:A:332:LYS:O	1:A:336:GLU:HG3	2.07	0.54
1:D:200:GLY:HA2	1:D:241:THR:OG1	2.08	0.54
1:G:93:SER:HA	1:G:135:THR:HA	1.89	0.54
1:G:96:ASN:OD1	1:G:217:HIS:HE1	1.90	0.54
1:B:93:SER:HA	1:B:135:THR:HA	1.89	0.53
1:H:200:GLY:HA2	1:H:241:THR:OG1	2.08	0.53
1:B:165:GLU:HB3	1:B:169:GLU:OE1	2.08	0.53
1:B:275:ILE:HD12	1:E:142:ARG:HH21	1.72	0.53
1:G:200:GLY:HA2	1:G:241:THR:OG1	2.08	0.53
1:A:135:THR:HG21	4:E:363:HOH:O	2.08	0.53
1:C:102:VAL:CG1	1:C:103:PRO:HD2	2.37	0.53
1:C:93:SER:HA	1:C:135:THR:HA	1.89	0.53
1:E:93:SER:HA	1:E:135:THR:HA	1.89	0.53
1:A:96:ASN:OD1	1:A:217:HIS:HE1	1.91	0.53
1:B:253:ILE:HA	1:E:42:PHE:CE2	2.43	0.53
1:F:126:PRO:HD2	4:F:368:HOH:O	2.07	0.53
1:A:200:GLY:HA2	1:A:241:THR:OG1	2.08	0.53
1:H:24:HIS:HB2	1:H:30:LEU:HD23	1.89	0.53
1:A:128:TYR:N	1:A:128:TYR:CD1	2.77	0.53
1:D:93:SER:HA	1:D:135:THR:HA	1.89	0.53
1:E:184:VAL:CG1	1:E:284:PRO:HA	2.39	0.53

Continued on next page...

Continued from previous page...

Atom-1	Atom-2	Interatomic distance (Å)	Clash overlap (Å)
1:G:128:TYR:CD1	1:G:128:TYR:N	2.77	0.53
1:A:184:VAL:CG1	1:A:284:PRO:HA	2.39	0.53
1:F:184:VAL:CG1	1:F:284:PRO:HA	2.39	0.53
1:H:184:VAL:CG1	1:H:284:PRO:HA	2.39	0.53
1:H:102:VAL:CG1	1:H:103:PRO:HD2	2.37	0.53
1:C:184:VAL:CG1	1:C:284:PRO:HA	2.39	0.52
1:D:128:TYR:N	1:D:128:TYR:CD1	2.77	0.52
1:D:184:VAL:CG1	1:D:284:PRO:HA	2.39	0.52
1:F:66:ASN:O	1:F:70:GLN:HG3	2.09	0.52
1:B:59:PRO:HB2	1:B:61:ASN:O	2.10	0.52
1:A:201:GLN:HG2	1:A:280:THR:CG2	2.36	0.52
1:C:128:TYR:CD1	1:C:128:TYR:N	2.77	0.52
1:F:102:VAL:CG1	1:F:103:PRO:HD2	2.37	0.52
1:C:29:PRO:O	1:C:30:LEU:HB2	2.08	0.52
1:B:58:GLU:HG3	1:B:59:PRO:CD	2.37	0.52
1:F:128:TYR:N	1:F:128:TYR:CD1	2.77	0.52
1:G:184:VAL:CG1	1:G:284:PRO:HA	2.39	0.52
1:H:58:GLU:HG2	1:H:59:PRO:HD2	1.92	0.51
1:E:128:TYR:N	1:E:128:TYR:CD1	2.77	0.51
1:H:128:TYR:CD1	1:H:128:TYR:N	2.77	0.51
1:B:201:GLN:HG2	1:B:280:THR:CG2	2.36	0.51
1:G:201:GLN:HG2	1:G:280:THR:CG2	2.36	0.51
1:B:102:VAL:CG1	1:B:103:PRO:HD2	2.37	0.51
1:B:184:VAL:CG1	1:B:284:PRO:HA	2.39	0.51
1:C:201:GLN:HG2	1:C:280:THR:CG2	2.36	0.51
1:D:201:GLN:HG2	1:D:280:THR:CG2	2.36	0.51
1:E:102:VAL:CG1	1:E:103:PRO:HD2	2.37	0.51
1:E:61:ASN:C	1:E:61:ASN:HD22	2.14	0.51
1:E:66:ASN:O	1:E:70:GLN:HG3	2.10	0.51
1:C:58:GLU:HG3	1:C:59:PRO:CD	2.41	0.51
1:H:201:GLN:HG2	1:H:280:THR:CG2	2.36	0.51
1:D:251:ASN:OD1	1:D:280:THR:HG23	2.11	0.51
1:B:128:TYR:N	1:B:128:TYR:CD1	2.77	0.51
1:B:251:ASN:OD1	1:B:280:THR:HG23	2.11	0.50
1:F:251:ASN:OD1	1:F:280:THR:HG23	2.11	0.50
1:E:24:HIS:CG	1:E:25:SER:N	2.80	0.50
1:C:82:PRO:HA	1:G:268:PRO:HB2	1.93	0.50
1:B:205:VAL:CG1	1:B:273:ALA:HB1	2.42	0.50
1:B:250:ILE:CD1	1:E:250:ILE:CD1	2.89	0.50
1:H:251:ASN:OD1	1:H:280:THR:HG23	2.11	0.50
1:B:275:ILE:HD12	1:E:142:ARG:NH2	2.27	0.50

Continued on next page...

Continued from previous page...

Atom-1	Atom-2	Interatomic distance (Å)	Clash overlap (Å)
1:B:58:GLU:CG	1:B:59:PRO:CD	2.90	0.50
1:E:248:ASN:ND2	4:E:384:HOH:O	2.34	0.50
1:G:256:HIS:HD1	1:G:278:GLU:CD	2.14	0.50
1:G:205:VAL:CG1	1:G:273:ALA:HB1	2.42	0.50
1:E:251:ASN:OD1	1:E:280:THR:HG23	2.11	0.50
1:F:115:ARG:HH22	1:F:121:GLU:CD	2.15	0.50
1:D:268:PRO:HB2	1:H:82:PRO:HA	1.93	0.49
1:E:205:VAL:CG1	1:E:273:ALA:HB1	2.42	0.49
1:A:251:ASN:OD1	1:A:280:THR:HG23	2.11	0.49
1:C:251:ASN:OD1	1:C:280:THR:HG23	2.11	0.49
1:E:115:ARG:HH22	1:E:121:GLU:CD	2.15	0.49
1:D:102:VAL:CG1	1:D:103:PRO:HD2	2.37	0.49
1:E:256:HIS:HD1	1:E:278:GLU:CD	2.14	0.49
1:G:251:ASN:OD1	1:G:280:THR:HG23	2.11	0.49
1:H:205:VAL:CG1	1:H:273:ALA:HB1	2.42	0.49
1:E:201:GLN:HG2	1:E:280:THR:CG2	2.36	0.49
1:F:201:GLN:HG2	1:F:280:THR:CG2	2.36	0.49
1:G:134:ASN:ND2	4:G:358:HOH:O	2.46	0.49
1:D:256:HIS:HD1	1:D:278:GLU:CD	2.14	0.49
1:F:205:VAL:CG1	1:F:273:ALA:HB1	2.42	0.49
1:H:115:ARG:HH22	1:H:121:GLU:CD	2.15	0.49
1:C:205:VAL:CG1	1:C:273:ALA:HB1	2.42	0.49
1:E:250:ILE:HD12	1:E:250:ILE:HG23	1.55	0.49
1:G:115:ARG:HH22	1:G:121:GLU:CD	2.15	0.49
1:B:216:THR:HG22	1:B:226:SER:OG	2.14	0.48
1:C:115:ARG:HH22	1:C:121:GLU:CD	2.15	0.48
1:H:161:LEU:O	1:H:162:ARG:HG3	2.13	0.48
1:A:205:VAL:CG1	1:A:273:ALA:HB1	2.42	0.48
1:C:216:THR:HG22	1:C:226:SER:OG	2.13	0.48
1:D:115:ARG:HH22	1:D:121:GLU:CD	2.15	0.48
1:D:205:VAL:CG1	1:D:273:ALA:HB1	2.42	0.48
1:B:260:TRP:O	1:B:264:CYS:HB2	2.14	0.48
1:C:260:TRP:O	1:C:264:CYS:HB2	2.14	0.48
1:C:28:GLN:N	1:C:29:PRO:CD	2.77	0.48
1:B:115:ARG:HH22	1:B:121:GLU:CD	2.15	0.48
1:A:58:GLU:HG2	1:A:59:PRO:HD2	1.93	0.48
1:A:102:VAL:CG1	1:A:103:PRO:HD2	2.37	0.48
1:G:216:THR:HG22	1:G:226:SER:OG	2.14	0.48
1:A:115:ARG:HH22	1:A:121:GLU:CD	2.15	0.48
1:F:24:HIS:CG	1:F:25:SER:N	2.80	0.48
1:A:260:TRP:O	1:A:264:CYS:HB2	2.14	0.48

Continued on next page...

Continued from previous page...

Atom-1	Atom-2	Interatomic distance (Å)	Clash overlap (Å)
1:E:216:THR:HG22	1:E:226:SER:OG	2.14	0.48
1:G:199:ARG:HH22	1:G:201:GLN:HE21	1.62	0.47
1:G:260:TRP:O	1:G:264:CYS:HB2	2.14	0.47
1:A:36:ALA:HA	2:A:348:FAD:N3A	2.30	0.47
1:D:199:ARG:HH22	1:D:201:GLN:HE21	1.62	0.47
1:E:61:ASN:HB3	1:E:64:GLU:HG3	1.96	0.47
1:F:199:ARG:HH22	1:F:201:GLN:HE21	1.62	0.47
1:F:256:HIS:HD1	1:F:278:GLU:CD	2.14	0.47
1:F:36:ALA:HA	2:F:348:FAD:N3A	2.30	0.47
1:B:250:ILE:HD12	1:B:250:ILE:HG23	1.55	0.47
1:D:260:TRP:O	1:D:264:CYS:HB2	2.14	0.47
1:H:216:THR:HG22	1:H:226:SER:OG	2.13	0.47
1:B:36:ALA:HA	2:B:348:FAD:N3A	2.30	0.47
1:H:260:TRP:O	1:H:264:CYS:HB2	2.14	0.47
1:D:216:THR:HG22	1:D:226:SER:OG	2.14	0.47
1:F:216:THR:HG22	1:F:226:SER:OG	2.14	0.47
1:F:260:TRP:O	1:F:264:CYS:HB2	2.14	0.47
1:H:36:ALA:HA	2:H:348:FAD:N3A	2.30	0.47
1:C:250:ILE:HG23	1:C:250:ILE:HD12	1.55	0.47
1:B:199:ARG:HH22	1:B:201:GLN:HE21	1.62	0.47
1:B:27:LEU:HD23	1:B:27:LEU:HA	1.38	0.47
1:C:194:LEU:HD23	1:C:194:LEU:HA	1.67	0.47
1:E:260:TRP:O	1:E:264:CYS:HB2	2.14	0.47
1:C:66:ASN:O	1:C:70:GLN:HG3	2.15	0.47
1:D:36:ALA:HA	2:D:348:FAD:N3A	2.30	0.47
1:H:250:ILE:HD12	1:H:250:ILE:HG23	1.55	0.47
1:C:177:VAL:HG12	1:C:178:ILE:N	2.30	0.46
1:G:177:VAL:HG12	1:G:178:ILE:N	2.30	0.46
1:G:36:ALA:HA	2:G:348:FAD:N3A	2.30	0.46
1:A:217:HIS:HA	4:A:395:HOH:O	2.15	0.46
1:C:199:ARG:HH22	1:C:201:GLN:HE21	1.62	0.46
1:C:58:GLU:CG	1:C:59:PRO:HD2	2.46	0.46
1:E:177:VAL:HG12	1:E:178:ILE:N	2.31	0.46
1:E:27:LEU:HA	1:E:27:LEU:HD23	1.38	0.46
1:H:199:ARG:HH22	1:H:201:GLN:HE21	1.62	0.46
1:F:92:VAL:HG21	1:F:138:ILE:CG1	2.35	0.46
1:B:177:VAL:HG12	1:B:178:ILE:N	2.30	0.46
1:E:36:ALA:HA	2:E:348:FAD:N3A	2.30	0.46
1:A:216:THR:HG22	1:A:226:SER:OG	2.14	0.46
1:H:24:HIS:HD2	1:H:30:LEU:HB3	1.81	0.46
1:A:199:ARG:HH22	1:A:201:GLN:HE21	1.62	0.46

Continued on next page...

Continued from previous page...

Atom-1	Atom-2	Interatomic distance (Å)	Clash overlap (Å)
1:D:128:TYR:C	1:D:129:ARG:HG2	2.35	0.46
1:B:24:HIS:CG	1:B:25:SER:N	2.81	0.46
1:C:216:THR:HG22	1:C:217:HIS:N	2.31	0.46
1:C:24:HIS:CG	1:C:25:SER:N	2.84	0.46
1:E:190:GLN:HA	1:E:191:PRO:HD3	1.61	0.46
1:E:58:GLU:CG	1:E:59:PRO:CD	2.94	0.46
1:F:187:GLY:HA3	4:F:378:HOH:O	2.15	0.46
1:H:216:THR:HG22	1:H:217:HIS:N	2.31	0.46
1:C:256:HIS:HD1	1:C:278:GLU:CD	2.14	0.46
1:C:36:ALA:HA	2:C:348:FAD:N3A	2.30	0.46
1:C:58:GLU:HG3	1:C:59:PRO:HD3	1.98	0.46
1:D:216:THR:HG22	1:D:217:HIS:N	2.31	0.46
1:D:318:ILE:HG12	1:D:318:ILE:O	2.16	0.46
1:G:318:ILE:HG12	1:G:318:ILE:O	2.16	0.46
1:H:58:GLU:HA	1:H:59:PRO:HD3	1.66	0.46
1:A:61:ASN:N	1:A:61:ASN:HD22	2.14	0.45
1:D:177:VAL:HG12	1:D:178:ILE:N	2.31	0.45
1:E:216:THR:HG22	1:E:217:HIS:N	2.31	0.45
1:H:318:ILE:O	1:H:318:ILE:HG12	2.16	0.45
1:D:211:LYS:O	4:D:367:HOH:O	2.21	0.45
1:D:258:THR:HG22	4:D:390:HOH:O	2.16	0.45
1:A:177:VAL:HG12	1:A:178:ILE:N	2.31	0.45
1:A:256:HIS:HD1	1:A:278:GLU:CD	2.14	0.45
1:F:190:GLN:HA	1:F:191:PRO:HD3	1.61	0.45
1:F:318:ILE:HG12	1:F:318:ILE:O	2.16	0.45
1:A:318:ILE:HG12	1:A:318:ILE:O	2.16	0.45
1:B:194:LEU:HD23	1:B:194:LEU:HA	1.67	0.45
1:B:92:VAL:HG21	1:B:138:ILE:CG1	2.35	0.45
1:F:216:THR:HG22	1:F:217:HIS:N	2.31	0.45
1:A:250:ILE:CD1	1:F:250:ILE:HD13	2.46	0.45
1:A:216:THR:HG22	1:A:217:HIS:N	2.31	0.45
1:C:27:LEU:HD23	1:C:27:LEU:HA	1.38	0.45
1:E:199:ARG:HH22	1:E:201:GLN:HE21	1.62	0.45
1:F:177:VAL:HG12	1:F:178:ILE:N	2.30	0.45
1:H:177:VAL:HG12	1:H:178:ILE:N	2.30	0.45
1:H:256:HIS:HD1	1:H:278:GLU:CD	2.14	0.45
1:B:318:ILE:HG12	1:B:318:ILE:O	2.16	0.45
1:C:115:ARG:NH2	1:C:121:GLU:OE2	2.42	0.45
1:C:58:GLU:HA	1:C:59:PRO:HD3	1.63	0.45
1:H:115:ARG:NH2	1:H:121:GLU:OE2	2.42	0.45
1:H:230:ILE:HA	1:H:231:PRO:HD3	1.70	0.45

Continued on next page...

Continued from previous page...

Atom-1	Atom-2	Interatomic distance (Å)	Clash overlap (Å)
1:H:60:SER:O	1:H:62:PRO:HD3	2.15	0.45
1:B:66:ASN:O	1:B:70:GLN:HG3	2.17	0.45
1:C:318:ILE:HG12	1:C:318:ILE:O	2.16	0.45
1:E:230:ILE:HA	1:E:231:PRO:HD3	1.70	0.45
1:E:318:ILE:HG12	1:E:318:ILE:O	2.16	0.45
1:C:152:LEU:HD23	1:C:152:LEU:HA	1.78	0.44
1:C:40:THR:HA	1:C:46:ASP:OD2	2.17	0.44
1:A:40:THR:HA	1:A:46:ASP:OD2	2.17	0.44
1:B:216:THR:HG22	1:B:217:HIS:N	2.31	0.44
1:B:40:THR:HA	1:B:46:ASP:OD2	2.17	0.44
1:G:216:THR:HG22	1:G:217:HIS:N	2.31	0.44
1:C:233:LEU:HD22	1:G:209:TRP:HB2	1.98	0.44
1:D:58:GLU:HA	1:D:59:PRO:HD3	1.78	0.44
1:E:40:THR:HA	1:E:46:ASP:OD2	2.17	0.44
1:A:275:ILE:HD12	1:F:142:ARG:NH2	2.31	0.44
1:D:40:THR:HA	1:D:46:ASP:OD2	2.17	0.44
1:G:40:THR:HA	1:G:46:ASP:OD2	2.17	0.44
1:E:216:THR:CG2	1:E:217:HIS:N	2.80	0.44
1:D:209:TRP:HB2	1:H:233:LEU:HD22	1.99	0.44
1:H:40:THR:HA	1:H:46:ASP:OD2	2.17	0.44
1:D:92:VAL:HG21	1:D:138:ILE:CG1	2.35	0.44
1:F:250:ILE:HD12	1:F:250:ILE:HG23	1.55	0.44
1:F:40:THR:HA	1:F:46:ASP:OD2	2.17	0.44
1:H:294:GLU:OE1	1:H:307:HIS:HE1	2.01	0.44
1:H:92:VAL:HG21	1:H:138:ILE:CG1	2.35	0.44
1:E:294:GLU:OE1	1:E:307:HIS:HE1	2.01	0.44
1:G:294:GLU:OE1	1:G:307:HIS:HE1	2.01	0.44
1:A:190:GLN:HA	1:A:191:PRO:HD3	1.61	0.44
1:B:216:THR:CG2	1:B:217:HIS:N	2.80	0.44
1:C:230:ILE:HA	1:C:231:PRO:HD3	1.70	0.44
1:D:294:GLU:OE1	1:D:307:HIS:HE1	2.01	0.44
1:F:294:GLU:OE1	1:F:307:HIS:HE1	2.01	0.44
1:B:256:HIS:HD1	1:B:278:GLU:CD	2.14	0.43
1:E:235:ALA:HA	4:E:365:HOH:O	2.17	0.43
1:G:216:THR:CG2	1:G:217:HIS:N	2.80	0.43
1:B:190:GLN:HA	1:B:191:PRO:HD3	1.61	0.43
1:H:190:GLN:HA	1:H:191:PRO:HD3	1.61	0.43
1:B:294:GLU:OE1	1:B:307:HIS:HE1	2.01	0.43
1:D:216:THR:CG2	1:D:217:HIS:N	2.80	0.43
1:C:190:GLN:HA	1:C:191:PRO:HD3	1.61	0.43
1:C:85:ALA:N	4:C:365:HOH:O	2.50	0.43

Continued on next page...

Continued from previous page...

Atom-1	Atom-2	Interatomic distance (Å)	Clash overlap (Å)
1:E:35:TYR:CZ	1:E:162:ARG:NH1	2.84	0.43
1:G:238:LEU:HD12	1:G:238:LEU:HA	1.75	0.43
1:E:1:MET:CE	1:E:334:LEU:CD2	2.97	0.43
1:G:334:LEU:HD23	1:G:334:LEU:HA	1.80	0.43
1:H:196:GLN:O	1:H:285:VAL:HB	2.19	0.43
1:H:216:THR:CG2	1:H:217:HIS:N	2.80	0.43
1:A:196:GLN:O	1:A:285:VAL:HB	2.19	0.43
1:A:294:GLU:OE1	1:A:307:HIS:HE1	2.01	0.43
1:C:196:GLN:O	1:C:285:VAL:HB	2.19	0.43
1:D:60:SER:HB2	1:D:61:ASN:H	1.35	0.43
1:E:115:ARG:NH2	1:E:121:GLU:OE2	2.42	0.43
1:E:196:GLN:O	1:E:285:VAL:HB	2.19	0.43
1:F:196:GLN:O	1:F:285:VAL:HB	2.19	0.43
1:F:1:MET:CE	1:F:334:LEU:CD2	2.97	0.43
1:G:194:LEU:HD23	1:G:194:LEU:HA	1.67	0.43
1:B:196:GLN:O	1:B:285:VAL:HB	2.19	0.43
1:G:196:GLN:O	1:G:285:VAL:HB	2.19	0.43
1:G:53:GLN:HG2	4:G:371:HOH:O	2.19	0.43
1:A:196:GLN:HG2	4:A:373:HOH:O	2.19	0.43
1:B:253:ILE:HG23	1:B:254:GLN:N	2.34	0.43
1:C:294:GLU:OE1	1:C:307:HIS:HE1	2.01	0.43
1:C:329:LEU:HD23	1:C:329:LEU:HA	1.73	0.43
1:H:24:HIS:CD2	1:H:30:LEU:HB3	2.54	0.43
1:A:238:LEU:HA	1:A:238:LEU:HD12	1.75	0.42
1:B:1:MET:CE	1:B:334:LEU:CD2	2.97	0.42
1:C:1:MET:CE	1:C:334:LEU:CD2	2.97	0.42
1:D:78:HIS:CD2	1:D:87:MET:HE1	2.54	0.42
1:F:27:LEU:HD23	1:F:27:LEU:HA	1.38	0.42
1:F:78:HIS:CD2	1:F:87:MET:HE1	2.54	0.42
1:A:216:THR:CG2	1:A:217:HIS:N	2.80	0.42
1:A:250:ILE:HG23	1:A:250:ILE:HD12	1.55	0.42
1:B:78:HIS:CD2	1:B:87:MET:CE	3.03	0.42
1:D:1:MET:CE	1:D:334:LEU:CD2	2.97	0.42
1:E:78:HIS:CD2	1:E:87:MET:HE1	2.54	0.42
1:E:78:HIS:CD2	1:E:87:MET:CE	3.03	0.42
1:B:90:THR:HG22	4:B:376:HOH:O	2.19	0.42
1:C:216:THR:CG2	1:C:217:HIS:N	2.80	0.42
1:F:115:ARG:NH2	1:F:121:GLU:OE2	2.42	0.42
1:H:329:LEU:HA	1:H:329:LEU:HD23	1.73	0.42
1:A:1:MET:CE	1:A:334:LEU:CD2	2.97	0.42
1:A:250:ILE:HA	1:A:250:ILE:HD13	1.82	0.42

Continued on next page...

Continued from previous page...

Atom-1	Atom-2	Interatomic distance (Å)	Clash overlap (Å)
1:A:78:HIS:CD2	1:A:87:MET:CE	3.02	0.42
1:C:238:LEU:HD12	1:C:238:LEU:HA	1.75	0.42
1:D:270:LEU:HD23	1:D:270:LEU:HA	1.89	0.42
1:D:27:LEU:HD23	1:D:27:LEU:HA	1.38	0.42
1:F:78:HIS:CD2	1:F:87:MET:CE	3.02	0.42
1:G:152:LEU:HA	1:G:152:LEU:HD23	1.78	0.42
1:H:334:LEU:HA	1:H:334:LEU:HD23	1.80	0.42
1:A:256:HIS:CE1	1:A:278:GLU:OE2	2.73	0.42
1:D:196:GLN:O	1:D:285:VAL:HB	2.19	0.42
1:E:61:ASN:HD22	1:E:62:PRO:CD	2.32	0.42
1:A:127:ASP:HB2	1:A:128:TYR:CE1	2.54	0.42
1:B:53:GLN:HA	1:B:54:PRO:HD3	1.85	0.42
1:D:165:GLU:HB2	1:D:169:GLU:OE1	2.18	0.42
1:F:152:LEU:HD23	1:F:152:LEU:HA	1.78	0.42
1:G:78:HIS:CD2	1:G:87:MET:CE	3.02	0.42
1:D:194:LEU:HA	1:D:194:LEU:HD23	1.67	0.42
1:E:252:ASN:HB3	4:E:384:HOH:O	2.19	0.42
1:H:66:ASN:O	1:H:70:GLN:HG3	2.20	0.42
1:C:78:HIS:CD2	1:C:87:MET:CE	3.03	0.42
1:E:256:HIS:CE1	1:E:278:GLU:OE2	2.73	0.42
1:H:78:HIS:CD2	1:H:87:MET:CE	3.02	0.42
1:A:230:ILE:HA	1:A:231:PRO:HD3	1.70	0.42
1:B:318:ILE:HG21	1:B:318:ILE:HD13	1.86	0.42
1:D:78:HIS:CD2	1:D:87:MET:CE	3.03	0.42
1:F:270:LEU:HD23	1:F:270:LEU:HA	1.89	0.42
1:G:1:MET:CE	1:G:334:LEU:CD2	2.97	0.42
1:H:1:MET:CE	1:H:334:LEU:CD2	2.97	0.42
1:H:238:LEU:HA	1:H:238:LEU:HD12	1.75	0.42
1:E:329:LEU:HA	1:E:329:LEU:HD23	1.73	0.42
1:B:270:LEU:HA	1:B:270:LEU:HD23	1.89	0.41
1:E:187:GLY:HA3	4:E:374:HOH:O	2.19	0.41
1:E:270:LEU:HA	1:E:270:LEU:HD23	1.89	0.41
1:H:78:HIS:CD2	1:H:87:MET:HE1	2.55	0.41
1:A:194:LEU:HA	1:A:194:LEU:HD23	1.67	0.41
1:F:334:LEU:HD23	1:F:334:LEU:HA	1.80	0.41
1:H:194:LEU:HD23	1:H:194:LEU:HA	1.67	0.41
1:H:27:LEU:HD23	1:H:27:LEU:HA	1.38	0.41
1:D:58:GLU:CB	1:D:59:PRO:HD2	2.34	0.41
1:E:238:LEU:HD12	1:E:238:LEU:HA	1.75	0.41
1:F:216:THR:CG2	1:F:217:HIS:N	2.80	0.41
1:F:252:ASN:HD21	1:F:255:ASP:CG	2.24	0.41

Continued on next page...

Continued from previous page...

Atom-1	Atom-2	Interatomic distance (Å)	Clash overlap (Å)
1:F:58:GLU:CG	1:F:59:PRO:CD	2.98	0.41
1:B:252:ASN:HD21	1:B:255:ASP:CG	2.24	0.41
1:D:190:GLN:HA	1:D:191:PRO:HD3	1.61	0.41
1:E:293:ARG:HH22	1:E:336:GLU:CD	2.24	0.41
1:A:293:ARG:HH22	1:A:336:GLU:CD	2.24	0.41
1:E:161:LEU:HD12	1:E:161:LEU:HA	1.90	0.41
1:H:104:ASP:HA	1:H:105:PRO:HD3	1.86	0.41
1:A:283:ARG:HH11	1:A:283:ARG:HD2	1.70	0.41
1:B:238:LEU:HA	1:B:238:LEU:HD12	1.75	0.41
1:F:230:ILE:HA	1:F:231:PRO:HD3	1.70	0.41
1:G:256:HIS:CE1	1:G:278:GLU:OE2	2.73	0.41
1:A:58:GLU:HG3	1:A:59:PRO:CD	2.48	0.41
1:B:20:HIS:CE1	1:B:155:ARG:HB3	2.56	0.41
1:D:256:HIS:CE1	1:D:278:GLU:OE2	2.73	0.41
1:E:194:LEU:HD23	1:E:194:LEU:HA	1.67	0.41
1:E:318:ILE:HG21	1:E:318:ILE:HD13	1.86	0.41
1:F:256:HIS:CE1	1:F:278:GLU:OE2	2.73	0.41
1:G:252:ASN:HD21	1:G:255:ASP:CG	2.24	0.41
1:H:293:ARG:HH22	1:H:336:GLU:CD	2.24	0.41
1:B:104:ASP:HA	1:B:105:PRO:HD3	1.86	0.41
1:C:324:LEU:HA	1:C:324:LEU:HD23	1.83	0.41
1:E:92:VAL:HG21	1:E:138:ILE:CG1	2.35	0.41
1:E:95:TYR:CD1	1:E:95:TYR:N	2.89	0.41
1:F:20:HIS:CE1	1:F:155:ARG:HB3	2.56	0.41
1:F:58:GLU:HG2	1:F:59:PRO:HD2	2.03	0.41
1:G:318:ILE:HG21	1:G:318:ILE:HD13	1.86	0.41
1:B:123:ASP:OD2	1:D:287:PRO:CB	2.65	0.41
1:B:250:ILE:HA	1:B:250:ILE:HD13	1.82	0.41
1:B:324:LEU:HA	1:B:324:LEU:HD23	1.83	0.41
1:B:78:HIS:CD2	1:B:87:MET:HE1	2.55	0.41
1:C:252:ASN:HD21	1:C:255:ASP:CG	2.24	0.41
1:C:256:HIS:CE1	1:C:278:GLU:OE2	2.73	0.41
1:E:252:ASN:HD21	1:E:255:ASP:CG	2.24	0.41
1:C:58:GLU:HG3	1:C:59:PRO:HD2	2.02	0.40
1:D:20:HIS:CE1	1:D:155:ARG:HB3	2.56	0.40
1:D:324:LEU:HA	1:D:324:LEU:HD23	1.83	0.40
1:A:104:ASP:HA	1:A:105:PRO:HD3	1.86	0.40
1:A:310:GLY:O	4:A:374:HOH:O	2.22	0.40
1:B:95:TYR:N	1:B:95:TYR:CD1	2.89	0.40
1:C:20:HIS:CE1	1:C:155:ARG:HB3	2.56	0.40
1:C:250:ILE:HA	1:C:250:ILE:HD13	1.82	0.40

Continued on next page...

Continued from previous page...

Atom-1	Atom-2	Interatomic distance (Å)	Clash overlap (Å)
1:C:293:ARG:HH22	1:C:336:GLU:CD	2.24	0.40
1:C:78:HIS:CD2	1:C:87:MET:HE3	2.57	0.40
1:D:283:ARG:HH11	1:D:283:ARG:HD2	1.70	0.40
1:B:124:MET:HE1	1:F:112:LEU:CD1	2.51	0.40
1:A:20:HIS:CE1	1:A:155:ARG:HB3	2.56	0.40
1:A:252:ASN:HD21	1:A:255:ASP:CG	2.24	0.40
1:C:161:LEU:HD12	1:C:161:LEU:HA	1.90	0.40
1:F:194:LEU:HA	1:F:194:LEU:HD23	1.67	0.40
1:A:27:LEU:HA	1:A:27:LEU:HD23	1.38	0.40
1:B:115:ARG:NH2	1:B:121:GLU:OE2	2.42	0.40
1:E:20:HIS:CE1	1:E:155:ARG:HB3	2.56	0.40
1:H:20:HIS:CE1	1:H:155:ARG:HB3	2.56	0.40
1:H:270:LEU:HD23	1:H:270:LEU:HA	1.89	0.40
1:B:161:LEU:HA	1:B:161:LEU:HD12	1.89	0.40
1:C:283:ARG:HH11	1:C:283:ARG:HD2	1.70	0.40
1:D:293:ARG:HH22	1:D:336:GLU:CD	2.24	0.40
1:E:30:LEU:HA	1:E:30:LEU:HD12	1.92	0.40
1:F:238:LEU:HD12	1:F:238:LEU:HA	1.75	0.40
1:F:95:TYR:CD1	1:F:95:TYR:N	2.89	0.40

All (2) symmetry-related close contacts are listed below. The label for Atom-2 includes the symmetry operator and encoded unit-cell translations to be applied.

Atom-1	Atom-2	Interatomic distance (Å)	Clash overlap (Å)
1:E:247:TRP:NE1	1:F:247:TRP:NE1[7_555]	2.02	0.18
1:C:119:PRO:O	1:H:162:ARG:NH2[4_565]	2.18	0.02

5.3 Torsion angles [i](#)

5.3.1 Protein backbone [i](#)

In the following table, the Percentiles column shows the percent Ramachandran outliers of the chain as a percentile score with respect to all X-ray entries followed by that with respect to entries of similar resolution.

The Analysed column shows the number of residues for which the backbone conformation was analysed, and the total number of residues.

Mol	Chain	Analysed	Favoured	Allowed	Outliers	Percentiles
1	A	337/347 (97%)	321 (95%)	15 (4%)	1 (0%)	41 64

Continued on next page...

Continued from previous page...

Mol	Chain	Analysed	Favoured	Allowed	Outliers	Percentiles	
1	B	337/347 (97%)	322 (96%)	14 (4%)	1 (0%)	41	64
1	C	337/347 (97%)	323 (96%)	12 (4%)	2 (1%)	25	47
1	D	337/347 (97%)	320 (95%)	15 (4%)	2 (1%)	25	47
1	E	337/347 (97%)	323 (96%)	13 (4%)	1 (0%)	41	64
1	F	337/347 (97%)	322 (96%)	14 (4%)	1 (0%)	41	64
1	G	337/347 (97%)	320 (95%)	16 (5%)	1 (0%)	41	64
1	H	337/347 (97%)	322 (96%)	14 (4%)	1 (0%)	41	64
All	All	2696/2776 (97%)	2573 (95%)	113 (4%)	10 (0%)	34	57

All (10) Ramachandran outliers are listed below:

Mol	Chain	Res	Type
1	C	30	LEU
1	D	60	SER
1	A	240	GLY
1	B	240	GLY
1	C	240	GLY
1	D	240	GLY
1	E	240	GLY
1	F	240	GLY
1	G	240	GLY
1	H	240	GLY

5.3.2 Protein sidechains ⓘ

In the following table, the Percentiles column shows the percent sidechain outliers of the chain as a percentile score with respect to all X-ray entries followed by that with respect to entries of similar resolution.

The Analysed column shows the number of residues for which the sidechain conformation was analysed, and the total number of residues.

Mol	Chain	Analysed	Rotameric	Outliers	Percentiles	
1	A	290/298 (97%)	283 (98%)	7 (2%)	49	74
1	B	290/298 (97%)	281 (97%)	9 (3%)	40	66
1	C	290/298 (97%)	283 (98%)	7 (2%)	49	74
1	D	290/298 (97%)	283 (98%)	7 (2%)	49	74
1	E	290/298 (97%)	282 (97%)	8 (3%)	43	69

Continued on next page...

Continued from previous page...

Mol	Chain	Analysed	Rotameric	Outliers	Percentiles	
1	F	290/298 (97%)	283 (98%)	7 (2%)	49	74
1	G	290/298 (97%)	283 (98%)	7 (2%)	49	74
1	H	290/298 (97%)	283 (98%)	7 (2%)	49	74
All	All	2320/2384 (97%)	2261 (98%)	59 (2%)	47	73

All (59) residues with a non-rotameric sidechain are listed below:

Mol	Chain	Res	Type
1	A	135	THR
1	A	142	ARG
1	A	151	ARG
1	A	184	VAL
1	A	242	PHE
1	A	267	GLU
1	A	291	LEU
1	B	24	HIS
1	B	135	THR
1	B	142	ARG
1	B	151	ARG
1	B	184	VAL
1	B	242	PHE
1	B	248	ASN
1	B	267	GLU
1	B	291	LEU
1	C	135	THR
1	C	142	ARG
1	C	151	ARG
1	C	184	VAL
1	C	242	PHE
1	C	267	GLU
1	C	291	LEU
1	D	135	THR
1	D	142	ARG
1	D	151	ARG
1	D	184	VAL
1	D	242	PHE
1	D	267	GLU
1	D	291	LEU
1	E	61	ASN
1	E	135	THR
1	E	142	ARG

Continued on next page...

Continued from previous page...

Mol	Chain	Res	Type
1	E	151	ARG
1	E	184	VAL
1	E	242	PHE
1	E	267	GLU
1	E	291	LEU
1	F	135	THR
1	F	142	ARG
1	F	151	ARG
1	F	184	VAL
1	F	242	PHE
1	F	267	GLU
1	F	291	LEU
1	G	135	THR
1	G	142	ARG
1	G	151	ARG
1	G	184	VAL
1	G	242	PHE
1	G	267	GLU
1	G	291	LEU
1	H	135	THR
1	H	142	ARG
1	H	151	ARG
1	H	184	VAL
1	H	242	PHE
1	H	267	GLU
1	H	291	LEU

Some sidechains can be flipped to improve hydrogen bonding and reduce clashes. All (62) such sidechains are listed below:

Mol	Chain	Res	Type
1	A	53	GLN
1	A	61	ASN
1	A	78	HIS
1	A	96	ASN
1	A	134	ASN
1	A	190	GLN
1	A	201	GLN
1	A	217	HIS
1	A	307	HIS
1	B	53	GLN
1	B	78	HIS
1	B	96	ASN

Continued on next page...

Continued from previous page...

Mol	Chain	Res	Type
1	B	134	ASN
1	B	190	GLN
1	B	201	GLN
1	B	217	HIS
1	B	307	HIS
1	C	66	ASN
1	C	70	GLN
1	C	78	HIS
1	C	86	ASN
1	C	190	GLN
1	C	201	GLN
1	C	217	HIS
1	C	248	ASN
1	C	252	ASN
1	C	307	HIS
1	D	61	ASN
1	D	78	HIS
1	D	190	GLN
1	D	201	GLN
1	D	217	HIS
1	D	288	GLN
1	D	307	HIS
1	E	61	ASN
1	E	78	HIS
1	E	190	GLN
1	E	201	GLN
1	E	217	HIS
1	E	307	HIS
1	F	78	HIS
1	F	134	ASN
1	F	190	GLN
1	F	201	GLN
1	F	217	HIS
1	F	307	HIS
1	G	53	GLN
1	G	78	HIS
1	G	96	ASN
1	G	190	GLN
1	G	201	GLN
1	G	217	HIS
1	G	307	HIS
1	H	24	HIS

Continued on next page...

Continued from previous page...

Mol	Chain	Res	Type
1	H	53	GLN
1	H	78	HIS
1	H	96	ASN
1	H	134	ASN
1	H	190	GLN
1	H	201	GLN
1	H	217	HIS
1	H	307	HIS

5.3.3 RNA [i](#)

There are no RNA molecules in this entry.

5.4 Non-standard residues in protein, DNA, RNA chains [i](#)

There are no non-standard protein/DNA/RNA residues in this entry.

5.5 Carbohydrates [i](#)

There are no carbohydrates in this entry.

5.6 Ligand geometry [i](#)

16 ligands are modelled in this entry.

In the following table, the Counts columns list the number of bonds (or angles) for which Mogul statistics could be retrieved, the number of bonds (or angles) that are observed in the model and the number of bonds (or angles) that are defined in the Chemical Component Dictionary. The Link column lists molecule types, if any, to which the group is linked. The Z score for a bond length (or angle) is the number of standard deviations the observed value is removed from the expected value. A bond length (or angle) with $|Z| > 2$ is considered an outlier worth inspection. RMSZ is the root-mean-square of all Z scores of the bond lengths (or angles).

Mol	Type	Chain	Res	Link	Bond lengths			Bond angles		
					Counts	RMSZ	# Z > 2	Counts	RMSZ	# Z > 2
3	BEZ	D	349	-	7,9,9	3.31	1 (14%)	8,11,11	1.07	0
2	FAD	G	348	-	51,58,58	1.02	4 (7%)	60,89,89	2.09	16 (26%)
2	FAD	E	348	-	51,58,58	1.01	4 (7%)	60,89,89	2.10	16 (26%)
2	FAD	C	348	-	51,58,58	1.02	4 (7%)	60,89,89	2.10	16 (26%)
2	FAD	A	348	-	51,58,58	1.02	4 (7%)	60,89,89	2.10	16 (26%)

Mol	Type	Chain	Res	Link	Bond lengths			Bond angles		
					Counts	RMSZ	# Z > 2	Counts	RMSZ	# Z > 2
3	BEZ	F	349	-	7,9,9	3.30	1 (14%)	8,11,11	1.09	1 (12%)
3	BEZ	A	349	-	7,9,9	3.29	1 (14%)	8,11,11	1.08	0
2	FAD	H	348	-	51,58,58	1.02	4 (7%)	60,89,89	2.10	16 (26%)
2	FAD	F	348	-	51,58,58	1.02	4 (7%)	60,89,89	2.09	16 (26%)
2	FAD	D	348	-	51,58,58	1.01	4 (7%)	60,89,89	2.10	16 (26%)
3	BEZ	B	349	-	7,9,9	3.32	1 (14%)	8,11,11	1.08	0
2	FAD	B	348	-	51,58,58	1.01	4 (7%)	60,89,89	2.10	16 (26%)
3	BEZ	C	349	-	7,9,9	3.28	1 (14%)	8,11,11	1.08	0
3	BEZ	H	349	-	7,9,9	3.30	1 (14%)	8,11,11	1.08	0
3	BEZ	E	349	-	7,9,9	3.27	1 (14%)	8,11,11	1.11	1 (12%)
3	BEZ	G	349	-	7,9,9	3.29	1 (14%)	8,11,11	1.09	1 (12%)

In the following table, the Chirals column lists the number of chiral outliers, the number of chiral centers analysed, the number of these observed in the model and the number defined in the Chemical Component Dictionary. Similar counts are reported in the Torsion and Rings columns. '-' means no outliers of that kind were identified.

Mol	Type	Chain	Res	Link	Chirals	Torsions	Rings
3	BEZ	D	349	-	-	0/0/4/4	0/1/1/1
2	FAD	G	348	-	-	1/30/50/50	0/6/6/6
2	FAD	E	348	-	-	1/30/50/50	0/6/6/6
2	FAD	C	348	-	-	1/30/50/50	0/6/6/6
2	FAD	A	348	-	-	1/30/50/50	0/6/6/6
3	BEZ	F	349	-	-	0/0/4/4	0/1/1/1
3	BEZ	A	349	-	-	0/0/4/4	0/1/1/1
2	FAD	H	348	-	-	1/30/50/50	0/6/6/6
2	FAD	F	348	-	-	1/30/50/50	0/6/6/6
2	FAD	D	348	-	-	1/30/50/50	0/6/6/6
3	BEZ	B	349	-	-	0/0/4/4	0/1/1/1
2	FAD	B	348	-	-	1/30/50/50	0/6/6/6
3	BEZ	C	349	-	-	0/0/4/4	0/1/1/1
3	BEZ	H	349	-	-	0/0/4/4	0/1/1/1
3	BEZ	E	349	-	-	0/0/4/4	0/1/1/1
3	BEZ	G	349	-	-	0/0/4/4	0/1/1/1

All (40) bond length outliers are listed below:

Mol	Chain	Res	Type	Atoms	Z	Observed(Å)	Ideal(Å)
3	B	349	BEZ	C1-C	-8.74	1.39	1.47
3	D	349	BEZ	C1-C	-8.73	1.39	1.47

Continued on next page...

Continued from previous page...

Mol	Chain	Res	Type	Atoms	Z	Observed(Å)	Ideal(Å)
3	F	349	BEZ	C1-C	-8.69	1.39	1.47
3	H	349	BEZ	C1-C	-8.69	1.39	1.47
3	G	349	BEZ	C1-C	-8.68	1.39	1.47
3	A	349	BEZ	C1-C	-8.67	1.39	1.47
3	C	349	BEZ	C1-C	-8.65	1.39	1.47
3	E	349	BEZ	C1-C	-8.63	1.39	1.47
2	A	348	FAD	C2-N1	-3.13	1.32	1.38
2	H	348	FAD	C2-N1	-3.13	1.32	1.38
2	G	348	FAD	C2-N1	-3.13	1.32	1.38
2	F	348	FAD	C2-N1	-3.12	1.32	1.38
2	E	348	FAD	C2-N1	-3.11	1.32	1.38
2	D	348	FAD	C2-N1	-3.10	1.32	1.38
2	B	348	FAD	C2-N1	-3.10	1.32	1.38
2	C	348	FAD	C2-N1	-3.09	1.32	1.38
2	C	348	FAD	C4-N3	2.82	1.37	1.33
2	H	348	FAD	C4-N3	2.80	1.37	1.33
2	D	348	FAD	C4-N3	2.79	1.37	1.33
2	F	348	FAD	C4-N3	2.79	1.37	1.33
2	G	348	FAD	C4-N3	2.78	1.37	1.33
2	A	348	FAD	C4-N3	2.77	1.37	1.33
2	E	348	FAD	C4-N3	2.75	1.37	1.33
2	B	348	FAD	C4-N3	2.75	1.37	1.33
2	A	348	FAD	C4X-C10	2.55	1.41	1.38
2	H	348	FAD	C4X-C10	2.52	1.41	1.38
2	E	348	FAD	C4X-C10	2.52	1.41	1.38
2	B	348	FAD	C4X-C10	2.50	1.41	1.38
2	C	348	FAD	C4X-C10	2.50	1.41	1.38
2	D	348	FAD	C4X-C10	2.49	1.41	1.38
2	G	348	FAD	C4X-C10	2.48	1.41	1.38
2	F	348	FAD	C4X-C10	2.47	1.41	1.38
2	E	348	FAD	C8A-N7A	-2.09	1.31	1.34
2	H	348	FAD	C8A-N7A	-2.07	1.31	1.34
2	A	348	FAD	C8A-N7A	-2.06	1.31	1.34
2	G	348	FAD	C8A-N7A	-2.06	1.31	1.34
2	D	348	FAD	C8A-N7A	-2.05	1.31	1.34
2	C	348	FAD	C8A-N7A	-2.05	1.31	1.34
2	B	348	FAD	C8A-N7A	-2.04	1.31	1.34
2	F	348	FAD	C8A-N7A	-2.03	1.31	1.34

All (131) bond angle outliers are listed below:

Continued on next page...

Continued from previous page...

Mol	Chain	Res	Type	Atoms	Z	Observed(°)	Ideal(°)
2	D	348	FAD	C4-N3-C2	8.42	122.25	115.14
2	B	348	FAD	C4-N3-C2	8.41	122.25	115.14
2	C	348	FAD	C4-N3-C2	8.39	122.22	115.14
2	E	348	FAD	C4-N3-C2	8.37	122.21	115.14
2	H	348	FAD	C4-N3-C2	8.36	122.20	115.14
2	A	348	FAD	C4-N3-C2	8.35	122.19	115.14
2	G	348	FAD	C4-N3-C2	8.35	122.19	115.14
2	F	348	FAD	C4-N3-C2	8.33	122.18	115.14
2	D	348	FAD	C4X-C4-N3	-5.32	116.16	123.43
2	C	348	FAD	C4X-C4-N3	-5.31	116.17	123.43
2	H	348	FAD	C4X-C4-N3	-5.31	116.17	123.43
2	B	348	FAD	C4X-C4-N3	-5.31	116.17	123.43
2	A	348	FAD	C4X-C4-N3	-5.30	116.18	123.43
2	F	348	FAD	C4X-C4-N3	-5.29	116.19	123.43
2	G	348	FAD	C4X-C4-N3	-5.28	116.22	123.43
2	E	348	FAD	C4X-C4-N3	-5.27	116.22	123.43
2	C	348	FAD	C1'-N10-C9A	4.58	121.89	118.29
2	A	348	FAD	C1'-N10-C9A	4.54	121.87	118.29
2	E	348	FAD	C1'-N10-C9A	4.54	121.86	118.29
2	H	348	FAD	C1'-N10-C9A	4.52	121.85	118.29
2	G	348	FAD	C1'-N10-C9A	4.52	121.85	118.29
2	F	348	FAD	C1'-N10-C9A	4.50	121.83	118.29
2	B	348	FAD	C1'-N10-C9A	4.50	121.83	118.29
2	D	348	FAD	C1'-N10-C9A	4.47	121.81	118.29
2	G	348	FAD	C10-C4X-N5	4.13	124.11	121.26
2	B	348	FAD	C10-C4X-N5	4.06	124.06	121.26
2	H	348	FAD	C10-C4X-N5	4.05	124.06	121.26
2	A	348	FAD	C10-C4X-N5	4.05	124.06	121.26
2	F	348	FAD	C10-C4X-N5	4.04	124.05	121.26
2	C	348	FAD	C10-C4X-N5	4.03	124.04	121.26
2	D	348	FAD	C10-C4X-N5	4.03	124.04	121.26
2	E	348	FAD	C10-C4X-N5	4.01	124.03	121.26
2	C	348	FAD	C5X-C9A-N10	3.87	120.52	117.72
2	E	348	FAD	C5X-C9A-N10	3.81	120.48	117.72
2	A	348	FAD	C5X-C9A-N10	3.79	120.46	117.72
2	B	348	FAD	C5X-C9A-N10	3.78	120.46	117.72
2	F	348	FAD	C5X-C9A-N10	3.76	120.44	117.72
2	D	348	FAD	C5X-C9A-N10	3.76	120.44	117.72
2	G	348	FAD	C5X-C9A-N10	3.75	120.43	117.72
2	H	348	FAD	C5X-C9A-N10	3.75	120.43	117.72
2	D	348	FAD	C4'-C3'-C2'	-3.72	105.63	113.36

Continued on next page...

Continued from previous page...

Mol	Chain	Res	Type	Atoms	Z	Observed(°)	Ideal(°)
2	F	348	FAD	C4'-C3'-C2'	-3.71	105.65	113.36
2	A	348	FAD	C4'-C3'-C2'	-3.71	105.66	113.36
2	H	348	FAD	C4'-C3'-C2'	-3.70	105.66	113.36
2	E	348	FAD	C4'-C3'-C2'	-3.69	105.69	113.36
2	G	348	FAD	C4'-C3'-C2'	-3.69	105.69	113.36
2	B	348	FAD	C4'-C3'-C2'	-3.69	105.69	113.36
2	C	348	FAD	C4'-C3'-C2'	-3.68	105.70	113.36
2	A	348	FAD	C6-C5X-C9A	3.33	123.41	119.05
2	C	348	FAD	C6-C5X-C9A	3.32	123.40	119.05
2	D	348	FAD	C6-C5X-C9A	3.32	123.40	119.05
2	B	348	FAD	C6-C5X-C9A	3.31	123.39	119.05
2	H	348	FAD	C6-C5X-C9A	3.30	123.38	119.05
2	E	348	FAD	C6-C5X-C9A	3.30	123.38	119.05
2	F	348	FAD	C6-C5X-C9A	3.28	123.35	119.05
2	G	348	FAD	C6-C5X-C9A	3.26	123.33	119.05
2	D	348	FAD	C6-C5X-N5	-2.93	115.82	119.05
2	C	348	FAD	C6-C5X-N5	-2.93	115.82	119.05
2	H	348	FAD	C6-C5X-N5	-2.93	115.83	119.05
2	F	348	FAD	C6-C5X-N5	-2.92	115.83	119.05
2	G	348	FAD	C6-C5X-N5	-2.91	115.85	119.05
2	E	348	FAD	C6-C5X-N5	-2.90	115.86	119.05
2	B	348	FAD	C6-C5X-N5	-2.90	115.86	119.05
2	A	348	FAD	C6-C5X-N5	-2.89	115.86	119.05
2	E	348	FAD	O2'-C2'-C1'	-2.83	102.78	109.59
2	C	348	FAD	O2'-C2'-C1'	-2.83	102.79	109.59
2	H	348	FAD	O2'-C2'-C1'	-2.82	102.79	109.59
2	G	348	FAD	O2'-C2'-C1'	-2.82	102.80	109.59
2	D	348	FAD	O2'-C2'-C1'	-2.82	102.81	109.59
2	F	348	FAD	O2'-C2'-C1'	-2.82	102.81	109.59
2	B	348	FAD	O2'-C2'-C1'	-2.81	102.82	109.59
2	A	348	FAD	O2'-C2'-C1'	-2.81	102.82	109.59
2	F	348	FAD	C4A-C5A-N7A	2.67	112.18	109.40
2	H	348	FAD	C4A-C5A-N7A	2.66	112.17	109.40
2	D	348	FAD	C4A-C5A-N7A	2.63	112.14	109.40
2	C	348	FAD	C4A-C5A-N7A	2.61	112.12	109.40
2	E	348	FAD	C4A-C5A-N7A	2.61	112.12	109.40
2	A	348	FAD	C4X-C10-N10	-2.61	117.62	120.30
2	B	348	FAD	C4A-C5A-N7A	2.60	112.11	109.40
2	A	348	FAD	C4A-C5A-N7A	2.60	112.11	109.40
2	G	348	FAD	C4A-C5A-N7A	2.59	112.10	109.40
2	G	348	FAD	C4X-C10-N10	-2.57	117.66	120.30
2	B	348	FAD	C4X-C10-N10	-2.56	117.68	120.30

Continued on next page...

Continued from previous page...

Mol	Chain	Res	Type	Atoms	Z	Observed(°)	Ideal(°)
2	H	348	FAD	C4X-C10-N10	-2.54	117.69	120.30
2	C	348	FAD	C4X-C10-N10	-2.54	117.69	120.30
2	D	348	FAD	C4X-C10-N10	-2.54	117.69	120.30
2	F	348	FAD	C4X-C10-N10	-2.52	117.71	120.30
2	E	348	FAD	C4X-C10-N10	-2.50	117.73	120.30
2	A	348	FAD	O3B-C3B-C2B	-2.32	104.31	111.82
2	G	348	FAD	O3B-C3B-C2B	-2.32	104.33	111.82
2	E	348	FAD	O3B-C3B-C2B	-2.32	104.33	111.82
2	F	348	FAD	O3B-C3B-C2B	-2.31	104.33	111.82
2	D	348	FAD	O3B-C3B-C2B	-2.31	104.34	111.82
2	H	348	FAD	O3B-C3B-C2B	-2.31	104.34	111.82
2	C	348	FAD	O3B-C3B-C2B	-2.31	104.35	111.82
2	F	348	FAD	C3B-C2B-C1B	-2.30	97.51	100.98
2	B	348	FAD	O3B-C3B-C2B	-2.30	104.38	111.82
2	H	348	FAD	C3B-C2B-C1B	-2.30	97.52	100.98
2	E	348	FAD	C3B-C2B-C1B	-2.29	97.53	100.98
2	B	348	FAD	C3B-C2B-C1B	-2.29	97.53	100.98
2	G	348	FAD	C3B-C2B-C1B	-2.28	97.54	100.98
2	C	348	FAD	C3B-C2B-C1B	-2.28	97.55	100.98
2	D	348	FAD	C3B-C2B-C1B	-2.28	97.55	100.98
2	A	348	FAD	C3B-C2B-C1B	-2.26	97.57	100.98
2	C	348	FAD	C9A-N10-C10	-2.09	119.17	121.91
2	E	348	FAD	C9A-N10-C10	-2.09	119.17	121.91
2	B	348	FAD	O3'-C3'-C4'	-2.08	103.80	108.81
2	D	348	FAD	O3'-C3'-C4'	-2.07	103.80	108.81
2	C	348	FAD	O3'-C3'-C4'	-2.07	103.82	108.81
2	H	348	FAD	O3'-C3'-C4'	-2.07	103.82	108.81
2	G	348	FAD	C9A-N10-C10	-2.06	119.20	121.91
2	G	348	FAD	O3'-C3'-C4'	-2.06	103.83	108.81
2	F	348	FAD	C9A-N10-C10	-2.06	119.21	121.91
2	H	348	FAD	C7-C6-C5X	-2.06	118.30	121.22
2	E	348	FAD	O3'-C3'-C4'	-2.05	103.85	108.81
2	D	348	FAD	C9A-N10-C10	-2.05	119.22	121.91
2	C	348	FAD	C7-C6-C5X	-2.05	118.32	121.22
2	A	348	FAD	O3'-C3'-C4'	-2.05	103.87	108.81
2	H	348	FAD	C9A-N10-C10	-2.04	119.23	121.91
2	B	348	FAD	C9A-N10-C10	-2.04	119.23	121.91
2	F	348	FAD	O3'-C3'-C4'	-2.04	103.88	108.81
2	B	348	FAD	C7-C6-C5X	-2.04	118.33	121.22
3	E	349	BEZ	C3-C2-C1	-2.03	118.00	120.56
2	D	348	FAD	C7-C6-C5X	-2.03	118.34	121.22
2	A	348	FAD	C7-C6-C5X	-2.03	118.35	121.22

Continued on next page...

Continued from previous page...

Mol	Chain	Res	Type	Atoms	Z	Observed(°)	Ideal(°)
2	E	348	FAD	C7-C6-C5X	-2.02	118.36	121.22
2	G	348	FAD	C7-C6-C5X	-2.02	118.36	121.22
2	F	348	FAD	C7-C6-C5X	-2.00	118.38	121.22
2	A	348	FAD	C9A-N10-C10	-2.00	119.28	121.91
3	F	349	BEZ	C3-C2-C1	-2.00	118.04	120.56
3	G	349	BEZ	C3-C2-C1	-2.00	118.05	120.56

There are no chirality outliers.

All (8) torsion outliers are listed below:

Mol	Chain	Res	Type	Atoms
2	G	348	FAD	O4B-C4B-C5B-O5B
2	E	348	FAD	O4B-C4B-C5B-O5B
2	C	348	FAD	O4B-C4B-C5B-O5B
2	A	348	FAD	O4B-C4B-C5B-O5B
2	H	348	FAD	O4B-C4B-C5B-O5B
2	F	348	FAD	O4B-C4B-C5B-O5B
2	D	348	FAD	O4B-C4B-C5B-O5B
2	B	348	FAD	O4B-C4B-C5B-O5B

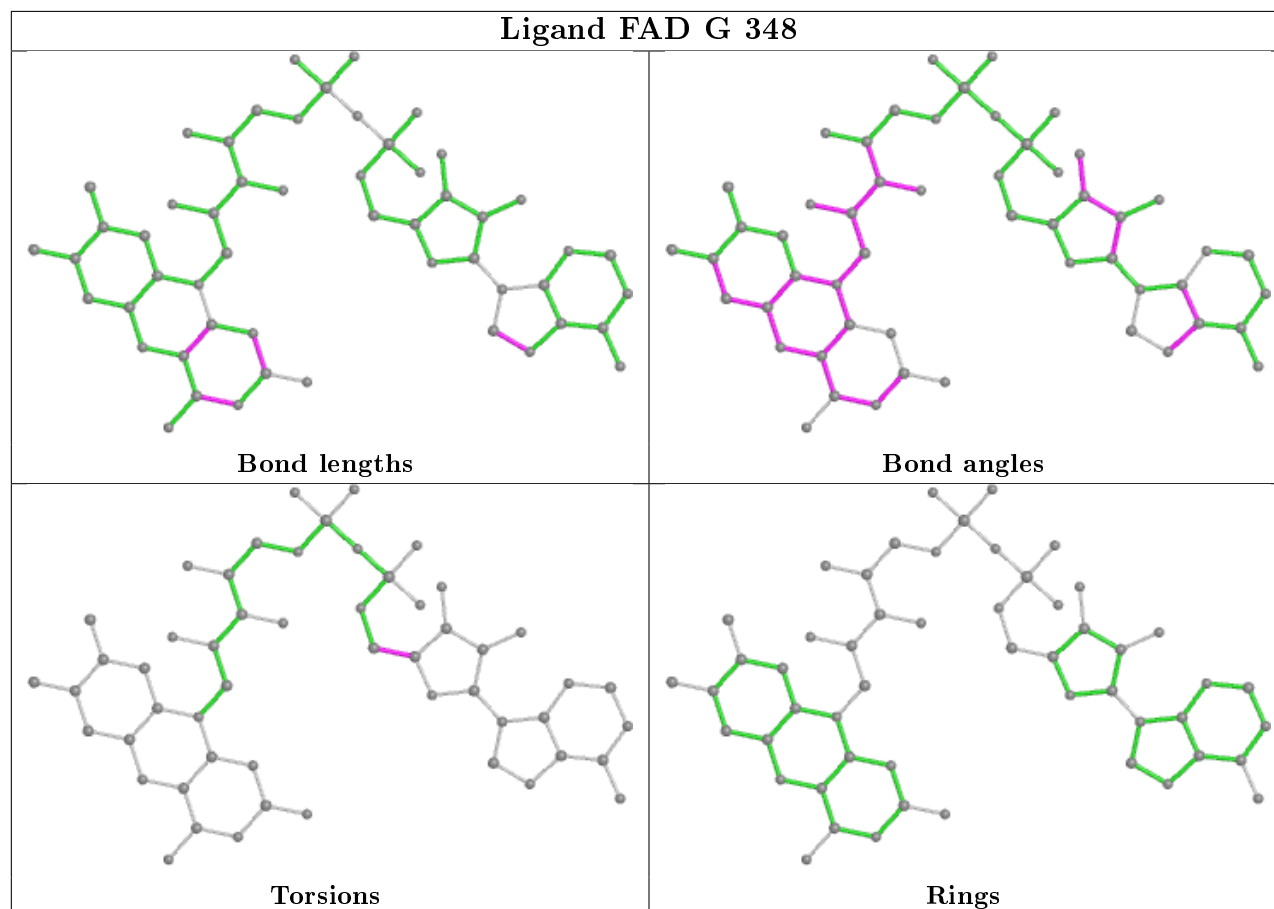
There are no ring outliers.

8 monomers are involved in 8 short contacts:

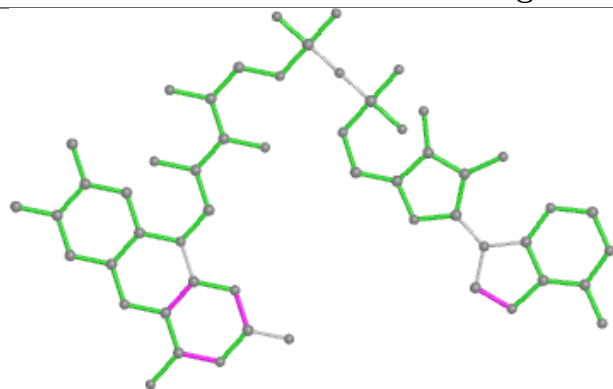
Mol	Chain	Res	Type	Clashes	Symm-Clashes
2	G	348	FAD	1	0
2	E	348	FAD	1	0
2	C	348	FAD	1	0
2	A	348	FAD	1	0
2	H	348	FAD	1	0
2	F	348	FAD	1	0
2	D	348	FAD	1	0
2	B	348	FAD	1	0

The following is a two-dimensional graphical depiction of Mogul quality analysis of bond lengths, bond angles, torsion angles, and ring geometry for all instances of the Ligand of Interest. In addition, ligands with molecular weight > 250 and outliers as shown on the validation Tables will also be included. For torsion angles, if less than 5% of the Mogul distribution of torsion angles is within 10 degrees of the torsion angle in question, then that torsion angle is considered an outlier. Any bond that is central to one or more torsion angles identified as an outlier by Mogul will be highlighted in the graph. For rings, the root-mean-square deviation (RMSD) between the ring in question and similar rings identified by Mogul is calculated over all ring torsion angles. If the average RMSD is greater than 60 degrees and the minimal RMSD between the ring in question and

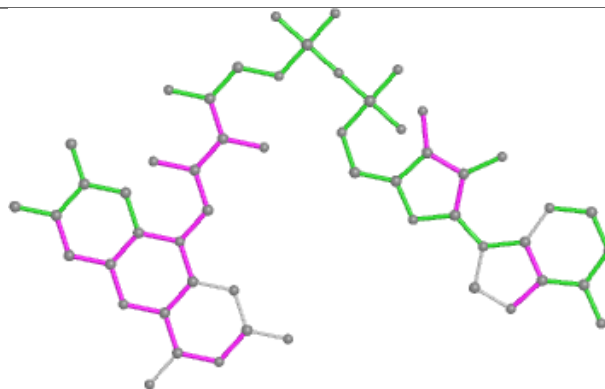
any Mogul-identified rings is also greater than 60 degrees, then that ring is considered an outlier. The outliers are highlighted in purple. The color gray indicates Mogul did not find sufficient equivalents in the CSD to analyse the geometry.



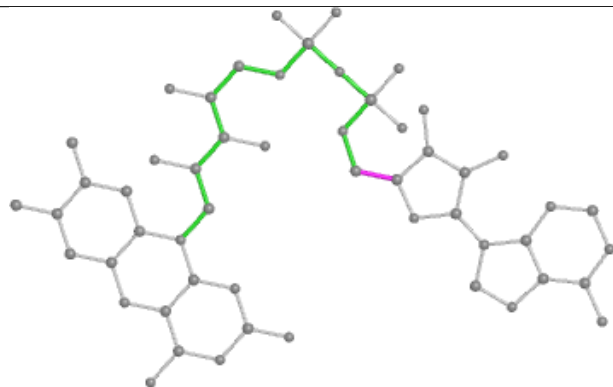
Ligand FAD E 348



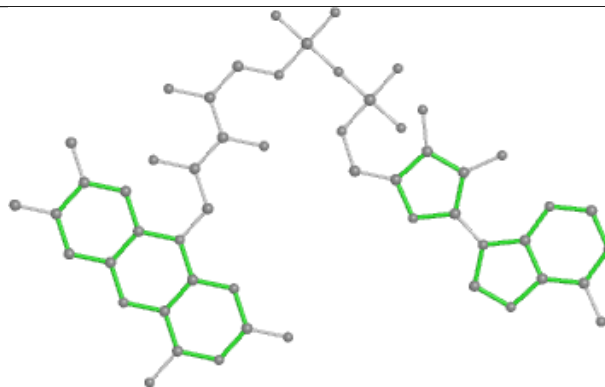
Bond lengths



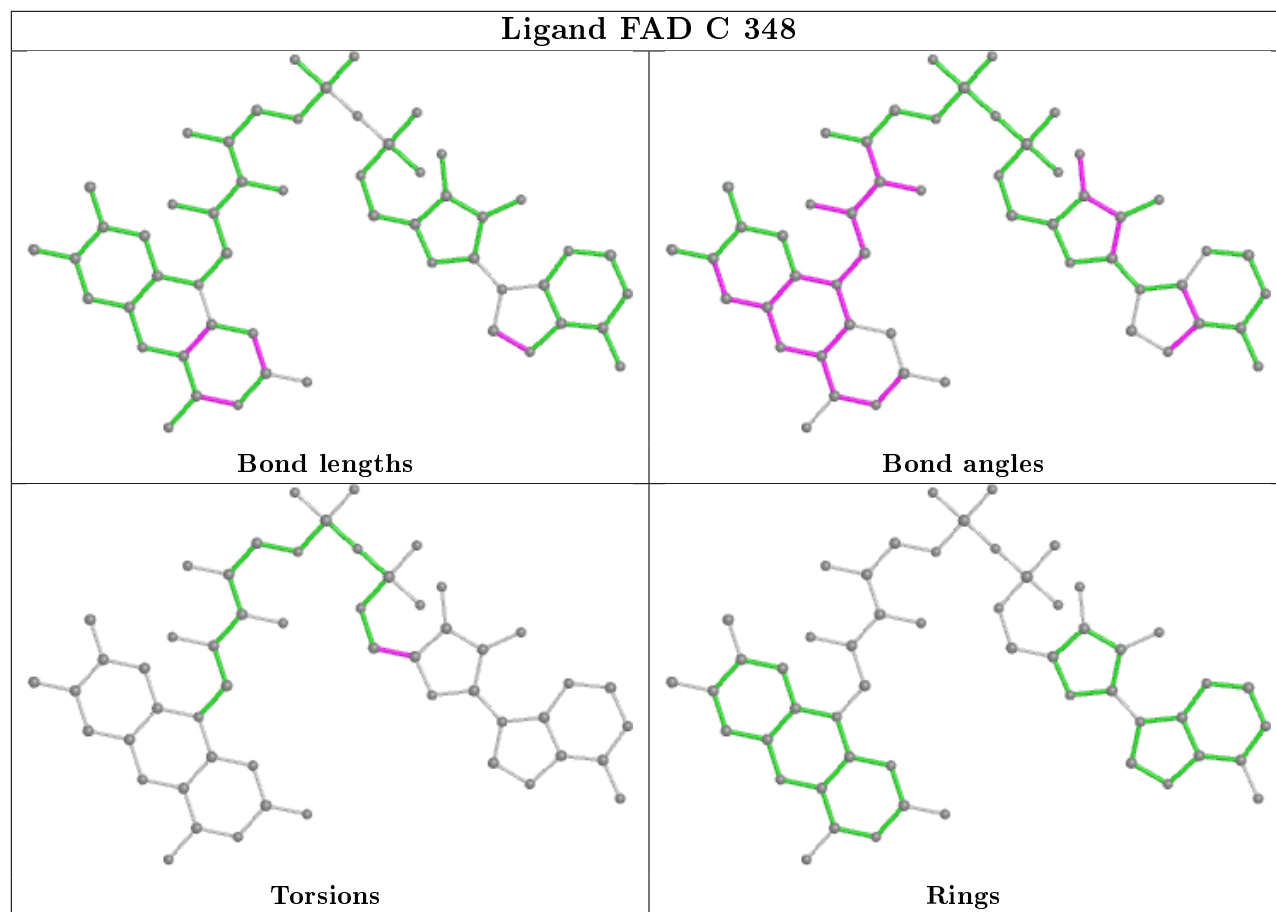
Bond angles

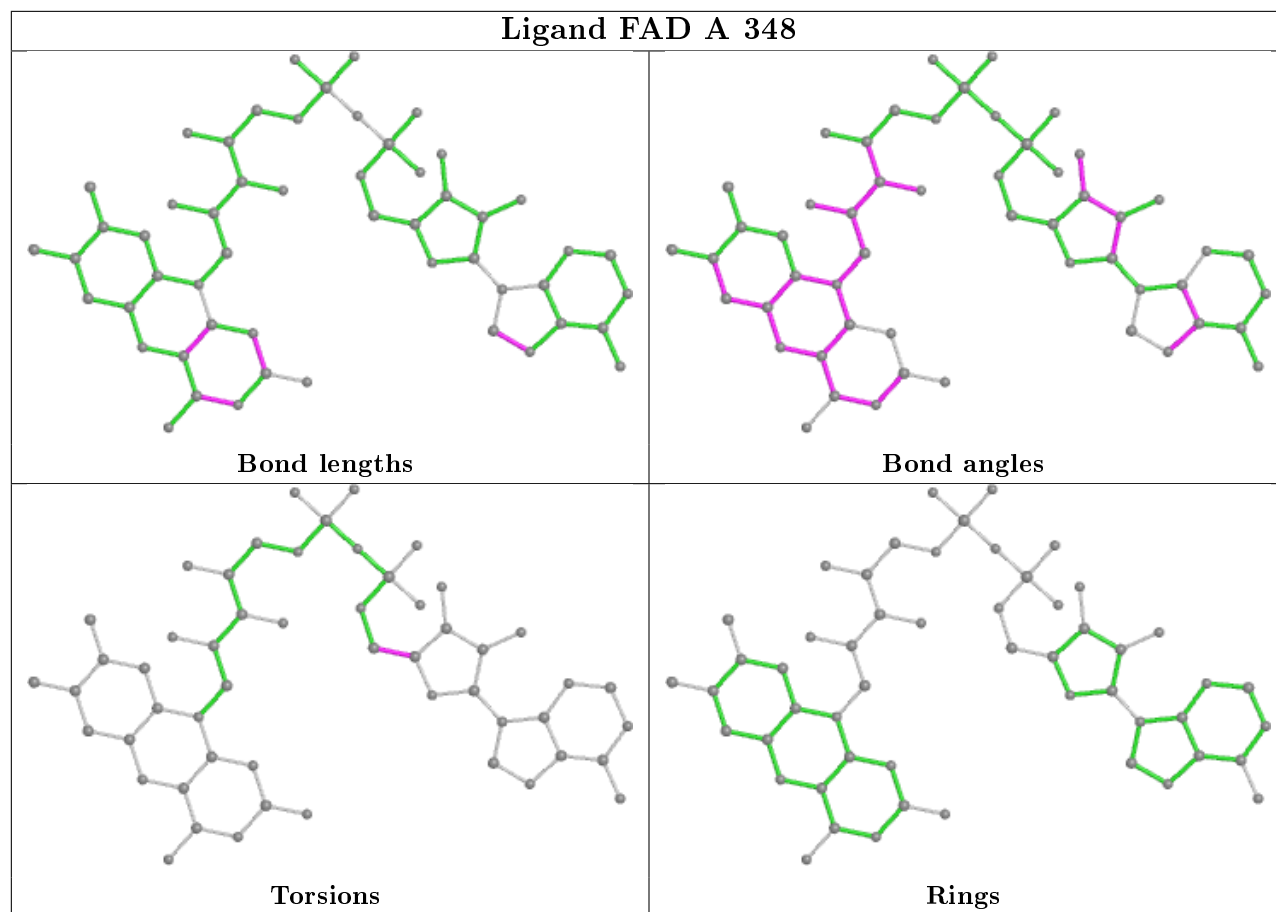


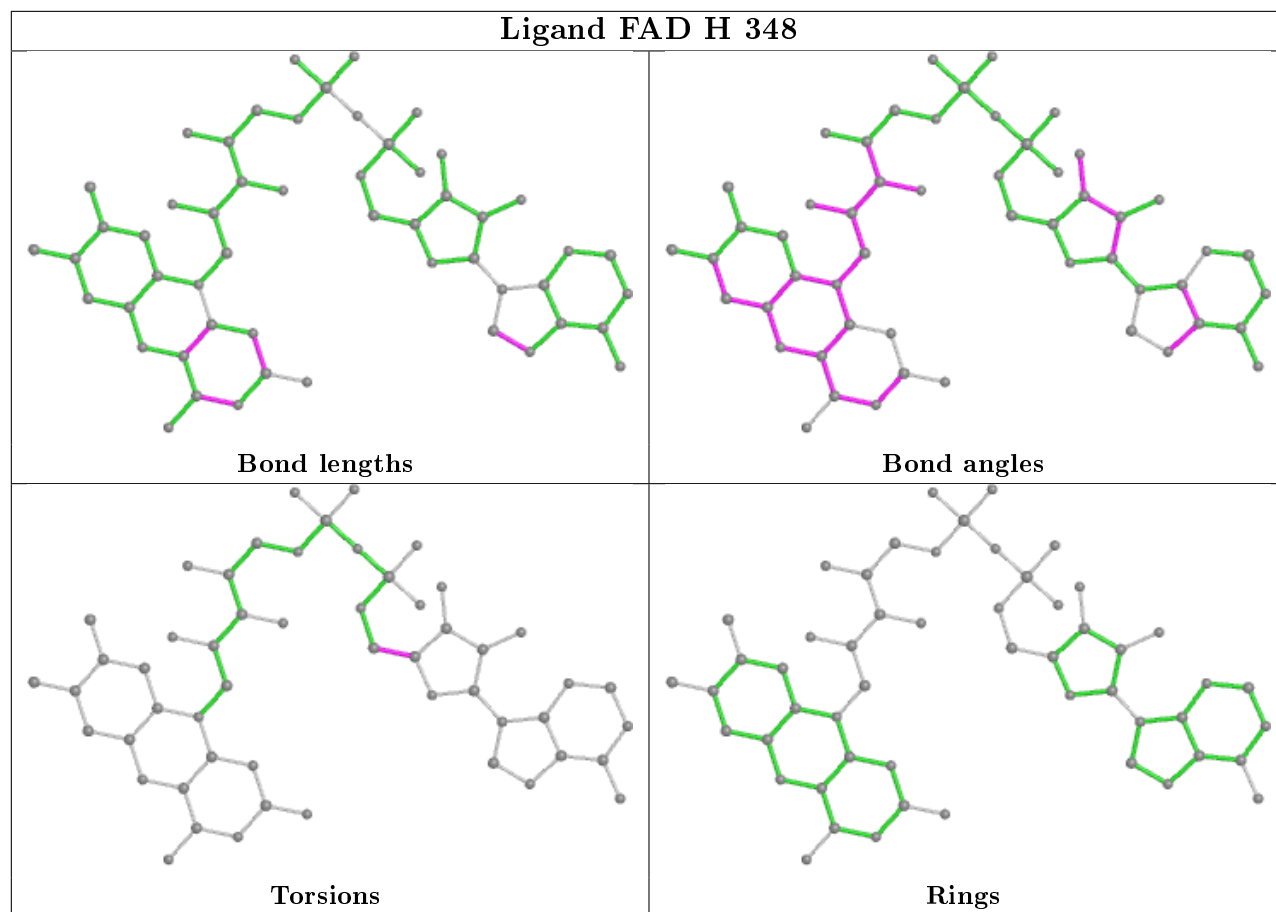
Torsions



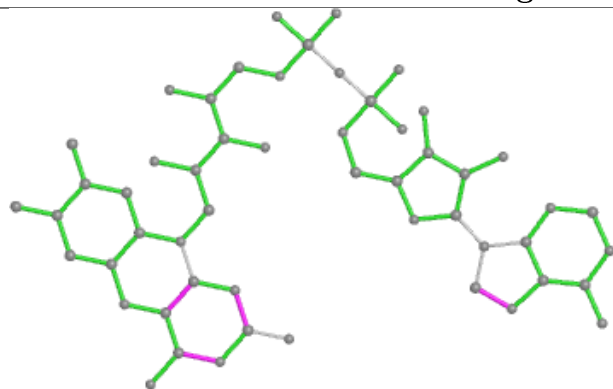
Rings



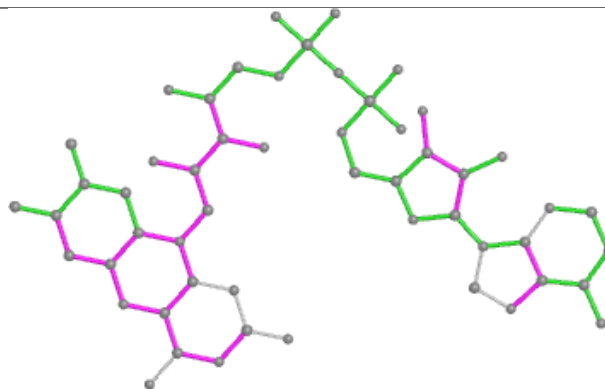




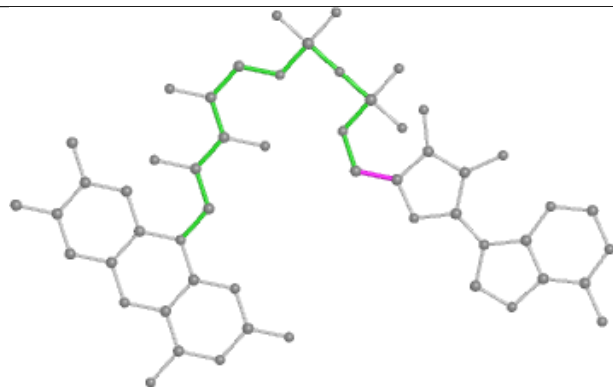
Ligand FAD F 348



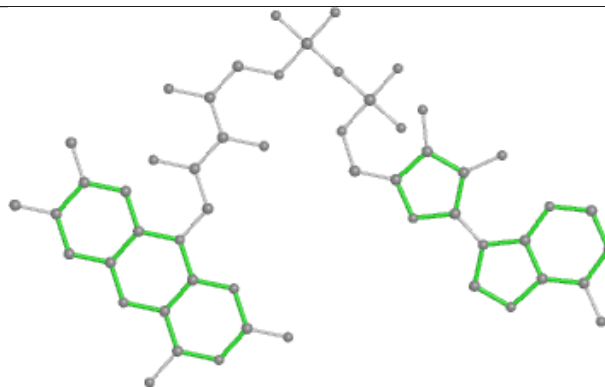
Bond lengths



Bond angles

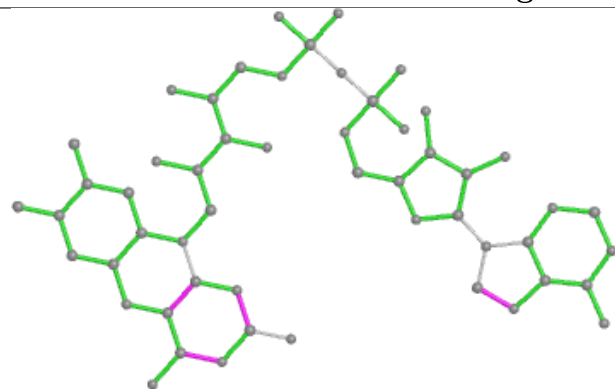


Torsions

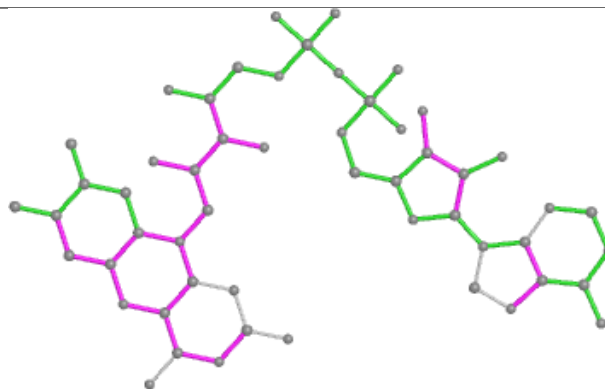


Rings

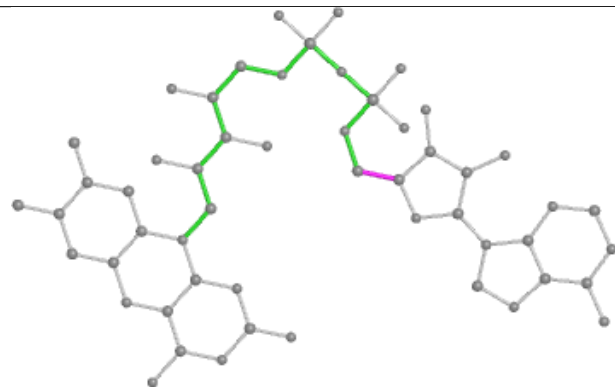
Ligand FAD D 348



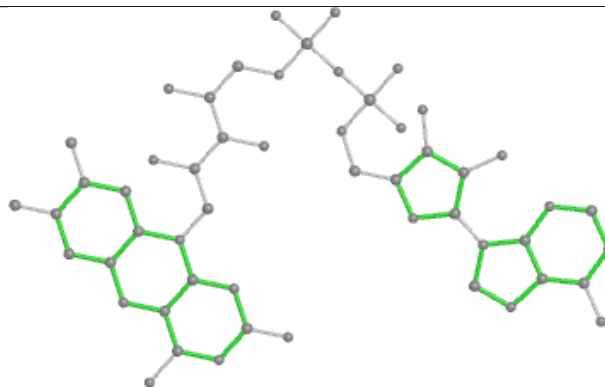
Bond lengths



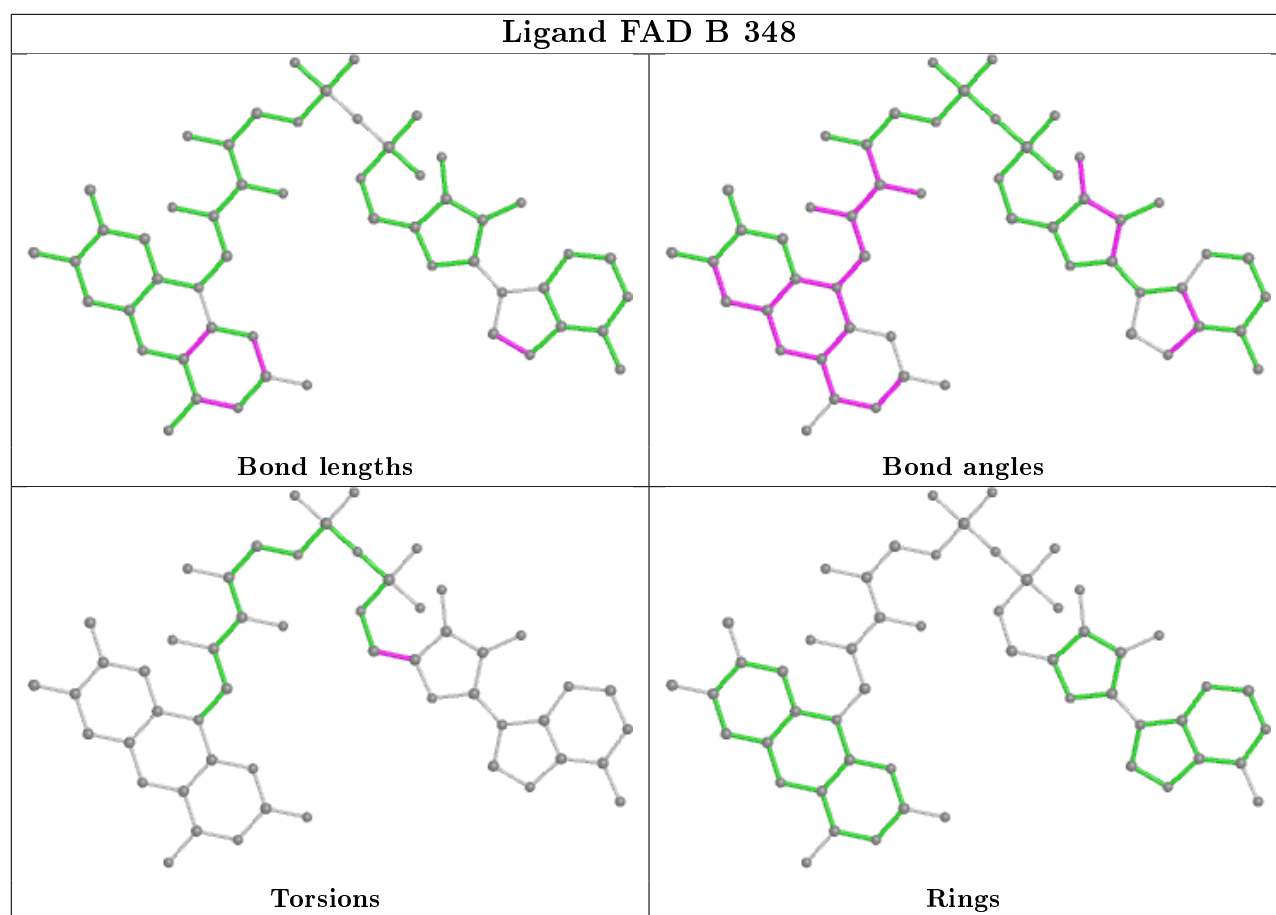
Bond angles



Torsions



Rings



5.7 Other polymers [i](#)

There are no such residues in this entry.

5.8 Polymer linkage issues [i](#)

There are no chain breaks in this entry.

6 Fit of model and data ⓘ

6.1 Protein, DNA and RNA chains ⓘ

EDS was not executed - this section is therefore empty.

6.2 Non-standard residues in protein, DNA, RNA chains ⓘ

EDS was not executed - this section is therefore empty.

6.3 Carbohydrates ⓘ

EDS was not executed - this section is therefore empty.

6.4 Ligands ⓘ

EDS was not executed - this section is therefore empty.

6.5 Other polymers ⓘ

EDS was not executed - this section is therefore empty.