



Full wwPDB X-ray Structure Validation Report ⓘ

Aug 22, 2020 – 10:18 AM BST

PDB ID : 6KJF
Title : lovastatin esterase PcEST in complex with simvastatin
Authors : Liang, Y.J.; Lu, X.F.
Deposited on : 2019-07-22
Resolution : 2.40 Å(reported)

This is a Full wwPDB X-ray Structure Validation Report for a publicly released PDB entry.

We welcome your comments at validation@mail.wwpdb.org

A user guide is available at

<https://www.wwpdb.org/validation/2017/XrayValidationReportHelp>

with specific help available everywhere you see the ⓘ symbol.

The following versions of software and data (see [references ⓘ](#)) were used in the production of this report:

MolProbity : 4.02b-467
Mogul : 1.8.5 (274361), CSD as541be (2020)
Xtriage (Phenix) : 1.13
EDS : 2.13.1
buster-report : 1.1.7 (2018)
Percentile statistics : 20191225.v01 (using entries in the PDB archive December 25th 2019)
Refmac : 5.8.0158
CCP4 : 7.0.044 (Gargrove)
Ideal geometry (proteins) : Engh & Huber (2001)
Ideal geometry (DNA, RNA) : Parkinson et al. (1996)
Validation Pipeline (wwPDB-VP) : 2.13.1

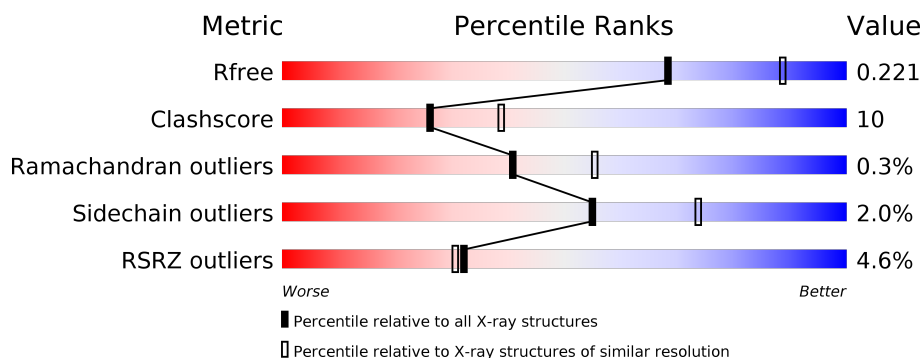
1 Overall quality at a glance

The following experimental techniques were used to determine the structure:

X-RAY DIFFRACTION

The reported resolution of this entry is 2.40 Å.

Percentile scores (ranging between 0-100) for global validation metrics of the entry are shown in the following graphic. The table shows the number of entries on which the scores are based.



Metric	Whole archive (#Entries)	Similar resolution (#Entries, resolution range(Å))
R_{free}	130704	3907 (2.40-2.40)
Clashscore	141614	4398 (2.40-2.40)
Ramachandran outliers	138981	4318 (2.40-2.40)
Sidechain outliers	138945	4319 (2.40-2.40)
RSRZ outliers	127900	3811 (2.40-2.40)

The table below summarises the geometric issues observed across the polymeric chains and their fit to the electron density. The red, orange, yellow and green segments on the lower bar indicate the fraction of residues that contain outliers for ≥ 3 , 2, 1 and 0 types of geometric quality criteria respectively. A grey segment represents the fraction of residues that are not modelled. The numeric value for each fraction is indicated below the corresponding segment, with a dot representing fractions $\leq 5\%$. The upper red bar (where present) indicates the fraction of residues that have poor fit to the electron density. The numeric value is given above the bar.

Mol	Chain	Length	Quality of chain
1	A	400	<div> <div>5%</div> <div> <div></div> <div>87%</div> <div>12%</div> <div>.</div> </div> </div>
1	B	400	<div> <div>4%</div> <div> <div></div> <div>87%</div> <div>12%</div> <div>.</div> </div> </div>

The following table lists non-polymeric compounds, carbohydrate monomers and non-standard residues in protein, DNA, RNA chains that are outliers for geometric or electron-density-fit criteria:

Mol	Type	Chain	Res	Chirality	Geometry	Clashes	Electron density
2	144	A	402	-	-	X	-
2	144	B	401	-	-	X	-
2	144	B	403	-	-	X	-
3	SIM	A	403	-	-	X	-

2 Entry composition [i](#)

There are 4 unique types of molecules in this entry. The entry contains 6673 atoms, of which 0 are hydrogens and 0 are deuteriums.

In the tables below, the ZeroOcc column contains the number of atoms modelled with zero occupancy, the AltConf column contains the number of residues with at least one atom in alternate conformation and the Trace column contains the number of residues modelled with at most 2 atoms.

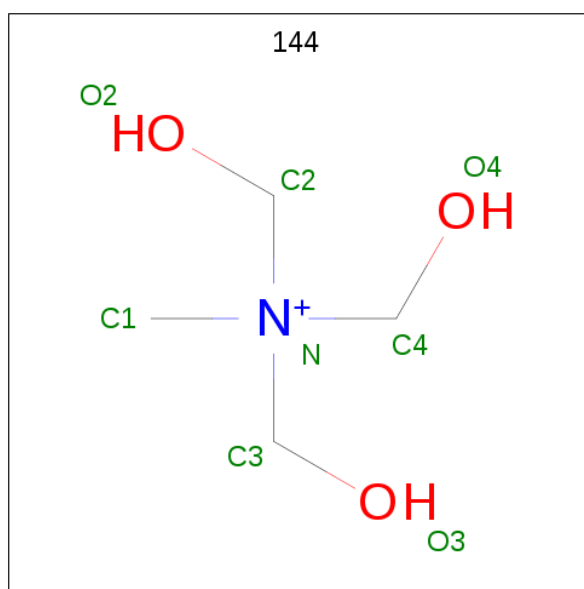
- Molecule 1 is a protein called Pc15g00720 protein.

Mol	Chain	Residues	Atoms					ZeroOcc	AltConf	Trace
1	B	400	Total	C	N	O	S	0	0	0
			3060	1946	522	579	13			
1	A	400	Total	C	N	O	S	0	0	0
			3060	1946	522	579	13			

There are 2 discrepancies between the modelled and reference sequences:

Chain	Residue	Modelled	Actual	Comment	Reference
B	0	HIS	-	expression tag	UNP B6H6L7
A	0	HIS	-	expression tag	UNP B6H6L7

- Molecule 2 is TRIS-HYDROXYMETHYL-METHYL-AMMONIUM (three-letter code: 144) (formula: C₄H₁₂NO₃).



Mol	Chain	Residues	Atoms				ZeroOcc	AltConf
2	B	1	Total	C	N	O	0	0
			8	4	1	3		

Continued on next page...

Mol	Chain	Residues	Atoms				ZeroOcc	AltConf
2	B	1	Total 8	C 4	N 1	O 3	0	0
2	B	1	Total 8	C 4	N 1	O 3	0	0
2	A	1	Total 8	C 4	N 1	O 3	0	0
2	A	1	Total 8	C 4	N 1	O 3	0	0

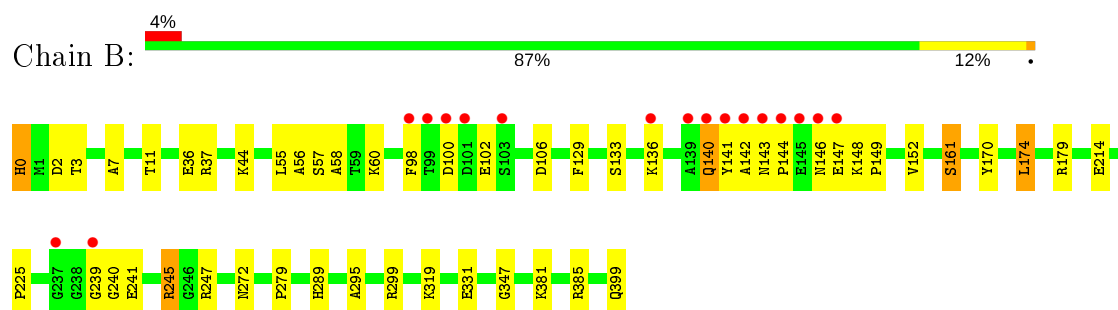
-

Mol	Chain	Residues	Atoms	ZeroOcc	AltConf
4	B	243	Total O 243 243	0	0
4	A	208	Total O 208 208	0	0

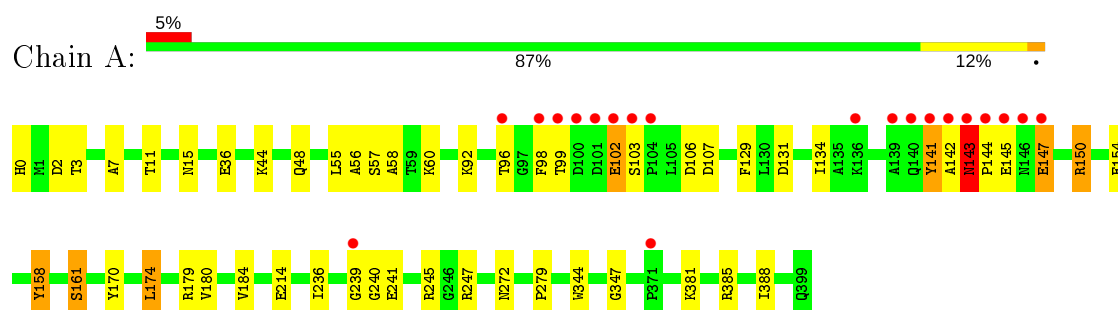
3 Residue-property plots [i](#)

These plots are drawn for all protein, RNA, DNA and oligosaccharide chains in the entry. The first graphic for a chain summarises the proportions of the various outlier classes displayed in the second graphic. The second graphic shows the sequence view annotated by issues in geometry and electron density. Residues are color-coded according to the number of geometric quality criteria for which they contain at least one outlier: green = 0, yellow = 1, orange = 2 and red = 3 or more. A red dot above a residue indicates a poor fit to the electron density ($RSRZ > 2$). Stretches of 2 or more consecutive residues without any outlier are shown as a green connector. Residues present in the sample, but not in the model, are shown in grey.

- Molecule 1: Pc15g00720 protein



- Molecule 1: Pc15g00720 protein



4 Data and refinement statistics

Property	Value	Source
Space group	P 21 21 21	Depositor
Cell constants a, b, c, α , β , γ	88.72Å 91.96Å 142.47Å 90.00° 90.00° 90.00°	Depositor
Resolution (Å)	31.15 – 2.40 31.15 – 2.40	Depositor EDS
% Data completeness (in resolution range)	98.0 (31.15-2.40) 98.1 (31.15-2.40)	Depositor EDS
R_{merge}	0.08	Depositor
R_{sym}	(Not available)	Depositor
$\langle I/\sigma(I) \rangle$ ¹	3.86 (at 2.39Å)	Xtriage
Refinement program	PHENIX 1.10.1_2155	Depositor
R, R_{free}	0.178 , 0.221 0.179 , 0.221	Depositor DCC
R_{free} test set	2000 reflections (4.41%)	wwPDB-VP
Wilson B-factor (Å ²)	28.3	Xtriage
Anisotropy	0.047	Xtriage
Bulk solvent k_{sol} (e/Å ³), B_{sol} (Å ²)	0.31 , 33.2	EDS
L-test for twinning ²	$\langle L \rangle = 0.50$, $\langle L^2 \rangle = 0.33$	Xtriage
Estimated twinning fraction	0.014 for k,h,-l	Xtriage
F_o, F_c correlation	0.94	EDS
Total number of atoms	6673	wwPDB-VP
Average B, all atoms (Å ²)	32.0	wwPDB-VP

Xtriage's analysis on translational NCS is as follows: *The largest off-origin peak in the Patterson function is 3.58% of the height of the origin peak. No significant pseudotranslation is detected.*

¹Intensities estimated from amplitudes.

²Theoretical values of $\langle |L| \rangle$, $\langle L^2 \rangle$ for acentric reflections are 0.5, 0.333 respectively for untwinned datasets, and 0.375, 0.2 for perfectly twinned datasets.

5 Model quality ⓘ

5.1 Standard geometry ⓘ

Bond lengths and bond angles in the following residue types are not validated in this section: 144, SIM

The Z score for a bond length (or angle) is the number of standard deviations the observed value is removed from the expected value. A bond length (or angle) with $|Z| > 5$ is considered an outlier worth inspection. RMSZ is the root-mean-square of all Z scores of the bond lengths (or angles).

Mol	Chain	Bond lengths		Bond angles	
		RMSZ	$\# Z > 5$	RMSZ	$\# Z > 5$
1	A	0.47	1/3132 (0.0%)	0.71	8/4255 (0.2%)
1	B	0.44	0/3132	0.64	2/4255 (0.0%)
All	All	0.46	1/6264 (0.0%)	0.68	10/8510 (0.1%)

All (1) bond length outliers are listed below:

Mol	Chain	Res	Type	Atoms	Z	Observed(Å)	Ideal(Å)
1	A	102	GLU	C-N	6.48	1.49	1.34

All (10) bond angle outliers are listed below:

Mol	Chain	Res	Type	Atoms	Z	Observed(°)	Ideal(°)
1	A	145	GLU	N-CA-C	-13.16	75.47	111.00
1	A	141	TYR	CB-CA-C	7.66	125.72	110.40
1	A	147	GLU	CB-CA-C	-6.75	96.90	110.40
1	A	98	PHE	CB-CA-C	6.43	123.27	110.40
1	A	174	LEU	CA-CB-CG	-6.42	100.53	115.30
1	A	145	GLU	CB-CA-C	-6.36	97.69	110.40
1	B	174	LEU	CA-CB-CG	-6.20	101.05	115.30
1	A	143	ASN	C-N-CD	-5.74	107.97	120.60
1	B	37	ARG	NE-CZ-NH2	-5.58	117.51	120.30
1	A	102	GLU	C-N-CA	5.14	134.56	121.70

There are no chirality outliers.

There are no planarity outliers.

5.2 Too-close contacts ⓘ

In the following table, the Non-H and H(model) columns list the number of non-hydrogen atoms and hydrogen atoms in the chain respectively. The H(added) column lists the number of hydrogen atoms added and optimized by MolProbity. The Clashes column lists the number of clashes within the asymmetric unit, whereas Symm-Clashes lists symmetry related clashes.

Mol	Chain	Non-H	H(model)	H(added)	Clashes	Symm-Clashes
1	A	3060	0	3012	66	0
1	B	3060	0	3012	61	1
2	A	16	0	24	10	0
2	B	24	0	36	18	1
3	A	31	0	39	23	0
3	B	31	0	39	13	0
4	A	208	0	0	2	0
4	B	243	0	0	2	0
All	All	6673	0	6162	129	1

The all-atom clashscore is defined as the number of clashes found per 1000 atoms (including hydrogen atoms). The all-atom clashscore for this structure is 10.

All (129) close contacts within the same asymmetric unit are listed below, sorted by their clash magnitude.

Atom-1	Atom-2	Interatomic distance (Å)	Clash overlap (Å)
1:B:57:SER:CB	3:B:404:SIM:H222	1.21	1.58
1:B:57:SER:HB2	3:B:404:SIM:C22	1.05	1.49
1:A:57:SER:HB3	3:A:403:SIM:C22	1.39	1.48
1:A:57:SER:CB	3:A:403:SIM:C22	2.06	1.34
1:A:57:SER:CB	3:A:403:SIM:H222	1.58	1.31
1:B:106:ASP:O	2:B:403:144:H32	1.08	1.26
1:A:106:ASP:O	2:A:401:144:H42	1.38	1.20
1:A:142:ALA:HB1	1:A:143:ASN:CA	1.75	1.17
1:A:142:ALA:HB1	1:A:143:ASN:CB	1.76	1.15
1:B:57:SER:HB2	3:B:404:SIM:H223	1.24	1.12
1:A:147:GLU:O	1:A:147:GLU:HG2	1.43	1.09
1:B:57:SER:CA	3:B:404:SIM:H222	1.85	1.06
1:A:57:SER:HB3	3:A:403:SIM:H221	1.34	1.05
1:B:106:ASP:O	2:B:403:144:C3	2.02	1.05
1:A:56:ALA:HB1	3:A:403:SIM:H233	1.34	1.04
1:A:347:GLY:N	3:A:403:SIM:O18	1.91	1.02
1:A:142:ALA:HB1	1:A:143:ASN:HA	1.35	1.02
1:B:57:SER:CB	3:B:404:SIM:C22	1.98	1.02
1:A:56:ALA:HB1	3:A:403:SIM:C23	1.95	0.96

Continued on next page...

Continued from previous page...

Atom-1	Atom-2	Interatomic distance (Å)	Clash overlap (Å)
1:A:57:SER:OG	3:A:403:SIM:H222	1.63	0.95
1:A:57:SER:HB3	3:A:403:SIM:H223	1.46	0.95
1:B:161:SER:O	2:B:401:144:C4	2.18	0.92
1:A:147:GLU:O	1:A:147:GLU:CG	2.22	0.88
1:B:106:ASP:OD1	2:B:403:144:H21	1.73	0.88
1:A:142:ALA:HB1	1:A:143:ASN:HB3	1.53	0.87
1:B:147:GLU:O	1:B:245:ARG:NH1	2.08	0.86
1:A:142:ALA:CB	1:A:143:ASN:CA	2.50	0.86
1:B:347:GLY:N	3:B:404:SIM:O18	2.09	0.86
1:B:161:SER:O	2:B:401:144:H42	1.77	0.85
1:B:106:ASP:CG	2:B:403:144:H21	1.97	0.84
1:A:161:SER:O	2:A:402:144:H32	1.77	0.84
1:B:106:ASP:H	2:B:403:144:H41	1.41	0.84
1:A:161:SER:O	2:A:402:144:H42	1.80	0.82
1:A:142:ALA:CB	1:A:143:ASN:HB3	2.10	0.81
1:B:56:ALA:HB1	3:B:404:SIM:H233	1.61	0.81
1:A:142:ALA:CB	1:A:143:ASN:HA	1.99	0.78
1:A:106:ASP:O	2:A:401:144:C4	2.29	0.78
1:A:142:ALA:CB	1:A:143:ASN:CB	2.61	0.77
1:A:57:SER:OG	3:A:403:SIM:C22	2.25	0.77
1:A:57:SER:CA	3:A:403:SIM:H222	2.16	0.75
1:B:148:LYS:HD3	1:B:149:PRO:HD2	1.65	0.75
1:B:161:SER:O	2:B:401:144:H41	1.86	0.74
1:A:161:SER:OG	2:A:402:144:H11	1.88	0.74
1:A:106:ASP:OD1	2:A:401:144:O4	2.01	0.73
1:B:331:GLU:OE2	4:B:501:HOH:O	2.06	0.73
1:B:161:SER:O	2:B:401:144:H31	1.90	0.72
1:A:57:SER:CB	3:A:403:SIM:H223	2.10	0.70
1:A:57:SER:N	3:A:403:SIM:H222	2.07	0.70
1:A:161:SER:O	2:A:402:144:C4	2.41	0.69
1:A:347:GLY:CA	3:A:403:SIM:O18	2.43	0.66
1:B:106:ASP:C	2:B:403:144:H32	2.10	0.65
1:B:225:PRO:O	4:B:502:HOH:O	2.15	0.64
1:B:161:SER:OG	2:B:401:144:H11	1.98	0.64
3:A:403:SIM:H202	3:A:403:SIM:H62	1.78	0.63
1:B:57:SER:OG	1:B:60:LYS:HD2	1.99	0.63
1:B:56:ALA:HB1	3:B:404:SIM:C23	2.29	0.62
1:A:99:THR:OG1	1:A:102:GLU:N	2.32	0.62
1:A:57:SER:H	3:A:403:SIM:H222	1.65	0.62
1:B:161:SER:O	2:B:401:144:C3	2.47	0.61
1:A:161:SER:O	2:A:402:144:C3	2.47	0.60

Continued on next page...

Continued from previous page...

Atom-1	Atom-2	Interatomic distance (Å)	Clash overlap (Å)
1:A:7:ALA:O	1:A:11:THR:HG23	2.03	0.59
1:B:7:ALA:O	1:B:11:THR:HG23	2.04	0.57
1:B:57:SER:HB2	3:B:404:SIM:H222	0.59	0.57
1:A:44:LYS:NZ	4:A:506:HOH:O	2.37	0.57
1:B:57:SER:N	3:B:404:SIM:H222	2.19	0.57
1:A:129:PHE:CE2	3:A:403:SIM:H22	2.40	0.57
1:A:48:GLN:OE1	4:A:501:HOH:O	2.17	0.56
1:A:56:ALA:CB	3:A:403:SIM:H233	2.22	0.55
1:A:57:SER:HB2	1:A:60:LYS:HD2	1.89	0.55
1:A:131:ASP:OD2	1:A:161:SER:OG	2.15	0.53
1:B:57:SER:CA	3:B:404:SIM:C22	2.67	0.52
1:B:106:ASP:OD1	2:B:403:144:C2	2.55	0.51
1:A:2:ASP:OD1	1:A:3:THR:N	2.43	0.51
1:B:148:LYS:HD3	1:B:149:PRO:CD	2.38	0.51
1:B:36:GLU:OE1	1:B:44:LYS:HD3	2.11	0.51
1:B:140:GLN:HG3	1:B:141:TYR:H	1.76	0.50
1:A:381:LYS:O	1:A:385:ARG:HG3	2.12	0.50
1:A:347:GLY:HA2	3:A:403:SIM:O18	2.11	0.49
1:B:241:GLU:CD	1:B:241:GLU:H	2.14	0.49
1:B:161:SER:OG	2:B:401:144:H32	2.13	0.49
1:A:99:THR:HG1	1:A:103:SER:H	1.60	0.49
1:B:142:ALA:HB1	1:B:143:ASN:HB2	1.95	0.48
2:A:401:144:O4	2:A:401:144:O2	2.29	0.48
1:B:2:ASP:OD1	1:B:3:THR:N	2.41	0.48
1:B:98:PHE:CE2	1:B:136:LYS:HD3	2.49	0.48
1:B:60:LYS:HE2	1:B:170:TYR:CE1	2.49	0.47
1:A:131:ASP:HB3	1:A:134:ILE:HB	1.97	0.47
1:A:272:ASN:OD1	1:A:279:PRO:HA	2.14	0.47
1:A:0:HIS:N	1:A:0:HIS:ND1	2.57	0.47
1:B:57:SER:H	3:B:404:SIM:H233	1.80	0.46
1:A:141:TYR:N	1:A:141:TYR:CD1	2.83	0.46
1:A:180:VAL:O	1:A:184:VAL:HG22	2.15	0.46
1:B:161:SER:CA	2:B:401:144:H41	2.46	0.46
1:B:214:GLU:HB2	1:A:214:GLU:HB2	1.98	0.45
3:A:403:SIM:O3	3:A:403:SIM:O1A	2.30	0.45
1:A:57:SER:N	3:A:403:SIM:C22	2.78	0.45
1:A:236:ILE:HD11	1:A:240:GLY:H	1.83	0.44
1:A:92:LYS:NZ	1:A:158:TYR:O	2.37	0.43
1:A:15:ASN:HB3	1:A:36:GLU:O	2.17	0.43
1:B:144:PRO:C	1:B:146:ASN:H	2.22	0.43
1:B:179:ARG:HA	1:B:179:ARG:HD2	1.83	0.43

Continued on next page...

Continued from previous page...

Atom-1	Atom-2	Interatomic distance (Å)	Clash overlap (Å)
1:B:289:HIS:HA	2:B:402:144:H42	2.00	0.43
1:B:129:PHE:CZ	3:B:404:SIM:H22	2.54	0.43
1:B:140:GLN:HG3	1:B:141:TYR:N	2.34	0.43
1:B:147:GLU:HA	1:B:245:ARG:HD2	2.01	0.43
1:B:295:ALA:O	1:B:299:ARG:HG3	2.19	0.43
1:B:239:GLY:HA3	1:B:240:GLY:HA2	1.89	0.42
1:B:0:HIS:N	1:B:0:HIS:ND1	2.53	0.42
1:B:272:ASN:OD1	1:B:279:PRO:HA	2.19	0.42
1:A:179:ARG:HA	1:A:179:ARG:HD2	1.84	0.42
1:A:344:TRP:CE2	3:A:403:SIM:H243	2.55	0.42
1:B:146:ASN:C	1:B:148:LYS:H	2.23	0.41
1:A:60:LYS:HE2	1:A:170:TYR:CE1	2.54	0.41
1:B:100:ASP:C	1:B:102:GLU:H	2.23	0.41
1:B:142:ALA:HB1	1:B:143:ASN:CA	2.50	0.41
1:A:161:SER:OG	2:A:402:144:H41	2.20	0.41
1:A:388:ILE:HA	1:A:388:ILE:HD12	1.84	0.41
1:B:55:LEU:HB3	1:B:58:ALA:HB3	2.02	0.41
1:A:236:ILE:HG22	3:A:403:SIM:H232	2.02	0.41
1:A:150:ARG:HG3	1:A:154:GLU:HB2	2.02	0.41
1:A:55:LEU:HB3	1:A:58:ALA:HB3	2.03	0.41
1:B:245:ARG:HA	1:B:245:ARG:HD3	1.80	0.41
1:B:133:SER:HB3	2:B:401:144:H12	2.03	0.41
1:B:161:SER:C	2:B:401:144:H41	2.42	0.41
1:A:245:ARG:HD3	1:A:245:ARG:HA	1.63	0.40
1:A:96:THR:HG21	1:A:107:ASP:OD2	2.21	0.40
1:A:239:GLY:HA3	1:A:241:GLU:OE2	2.21	0.40
1:B:381:LYS:O	1:B:385:ARG:HG3	2.21	0.40
1:B:152:VAL:HB	1:B:179:ARG:HG3	2.03	0.40

All (1) symmetry-related close contacts are listed below. The label for Atom-2 includes the symmetry operator and encoded unit-cell translations to be applied.

Atom-1	Atom-2	Interatomic distance (Å)	Clash overlap (Å)
1:B:399:GLN:NE2	2:B:403:144:O4[4_455]	1.88	0.32

5.3 Torsion angles

5.3.1 Protein backbone

In the following table, the Percentiles column shows the percent Ramachandran outliers of the chain as a percentile score with respect to all X-ray entries followed by that with respect to entries of similar resolution.

The Analysed column shows the number of residues for which the backbone conformation was analysed, and the total number of residues.

Mol	Chain	Analysed	Favoured	Allowed	Outliers	Percentiles	
1	A	398/400 (100%)	380 (96%)	16 (4%)	2 (0%)	29	41
1	B	398/400 (100%)	383 (96%)	15 (4%)	0	100	100
All	All	796/800 (100%)	763 (96%)	31 (4%)	2 (0%)	41	55

All (2) Ramachandran outliers are listed below:

Mol	Chain	Res	Type
1	A	144	PRO
1	A	143	ASN

5.3.2 Protein sidechains

In the following table, the Percentiles column shows the percent sidechain outliers of the chain as a percentile score with respect to all X-ray entries followed by that with respect to entries of similar resolution.

The Analysed column shows the number of residues for which the sidechain conformation was analysed, and the total number of residues.

Mol	Chain	Analysed	Rotameric	Outliers	Percentiles	
1	A	319/319 (100%)	313 (98%)	6 (2%)	57	75
1	B	319/319 (100%)	312 (98%)	7 (2%)	52	71
All	All	638/638 (100%)	625 (98%)	13 (2%)	55	74

All (13) residues with a non-rotameric sidechain are listed below:

Mol	Chain	Res	Type
1	B	0	HIS
1	B	140	GLN
1	B	161	SER
1	B	174	LEU

Continued on next page...

Continued from previous page...

Mol	Chain	Res	Type
1	B	245	ARG
1	B	247	ARG
1	B	319	LYS
1	A	143	ASN
1	A	150	ARG
1	A	158	TYR
1	A	161	SER
1	A	174	LEU
1	A	247	ARG

Some sidechains can be flipped to improve hydrogen bonding and reduce clashes. There are no such sidechains identified.

5.3.3 RNA [i](#)

There are no RNA molecules in this entry.

5.4 Non-standard residues in protein, DNA, RNA chains [i](#)

There are no non-standard protein/DNA/RNA residues in this entry.

5.5 Carbohydrates [i](#)

There are no monosaccharides in this entry.

5.6 Ligand geometry [i](#)

7 ligands are modelled in this entry.

In the following table, the Counts columns list the number of bonds (or angles) for which Mogul statistics could be retrieved, the number of bonds (or angles) that are observed in the model and the number of bonds (or angles) that are defined in the Chemical Component Dictionary. The Link column lists molecule types, if any, to which the group is linked. The Z score for a bond length (or angle) is the number of standard deviations the observed value is removed from the expected value. A bond length (or angle) with $|Z| > 2$ is considered an outlier worth inspection. RMSZ is the root-mean-square of all Z scores of the bond lengths (or angles).

Mol	Type	Chain	Res	Link	Bond lengths			Bond angles		
					Counts	RMSZ	# $ Z > 2$	Counts	RMSZ	# $ Z > 2$
3	SIM	A	403	-	29,32,32	2.16	5 (17%)	33,46,46	2.11	11 (33%)

Mol	Type	Chain	Res	Link	Bond lengths			Bond angles		
					Counts	RMSZ	# Z > 2	Counts	RMSZ	# Z > 2
2	144	B	401	-	1,7,7	1.68	0	3,9,9	0.44	0
2	144	A	401	-	1,7,7	1.20	0	3,9,9	0.26	0
3	SIM	B	404	-	29,32,32	2.20	8 (27%)	33,46,46	2.13	14 (42%)
2	144	B	403	-	1,7,7	1.33	0	3,9,9	0.19	0
2	144	A	402	-	1,7,7	1.60	0	3,9,9	0.60	0
2	144	B	402	-	1,7,7	1.37	0	3,9,9	0.27	0

In the following table, the Chirals column lists the number of chiral outliers, the number of chiral centers analysed, the number of these observed in the model and the number defined in the Chemical Component Dictionary. Similar counts are reported in the Torsion and Rings columns. '-' means no outliers of that kind were identified.

Mol	Type	Chain	Res	Link	Chirals	Torsions	Rings
3	SIM	A	403	-	-	9/24/55/55	0/2/2/2
2	144	B	401	-	-	0/0/9/9	-
2	144	A	401	-	-	0/0/9/9	-
3	SIM	B	404	-	-	6/24/55/55	0/2/2/2
2	144	B	403	-	-	0/0/9/9	-
2	144	A	402	-	-	0/0/9/9	-
2	144	B	402	-	-	0/0/9/9	-

All (13) bond length outliers are listed below:

Mol	Chain	Res	Type	Atoms	Z	Observed(Å)	Ideal(Å)
3	B	404	SIM	O14-C18	8.49	1.49	1.34
3	A	403	SIM	O14-C18	8.38	1.49	1.34
3	A	403	SIM	C19-C18	-4.28	1.46	1.52
3	A	403	SIM	C23-C19	-3.81	1.46	1.53
3	B	404	SIM	C19-C18	-3.79	1.47	1.52
3	A	403	SIM	O14-C14	-3.12	1.40	1.46
3	A	403	SIM	C9-C8	-3.09	1.51	1.54
3	B	404	SIM	O14-C14	-2.90	1.41	1.46
3	B	404	SIM	C9-C8	-2.78	1.51	1.54
3	B	404	SIM	C13-C12	-2.23	1.49	1.52
3	B	404	SIM	C23-C19	-2.20	1.49	1.53
3	B	404	SIM	C13-C8	-2.15	1.51	1.54
3	B	404	SIM	C7-C8	-2.07	1.50	1.53

All (25) bond angle outliers are listed below:

Mol	Chain	Res	Type	Atoms	Z	Observed(°)	Ideal(°)
3	A	403	SIM	C14-O14-C18	-4.43	110.31	117.38
3	A	403	SIM	C9A-C9-C8	-4.35	110.27	114.52
3	B	404	SIM	O18-C18-C19	-4.27	111.90	123.82
3	A	403	SIM	C7-C8-C9	-4.15	110.20	112.87
3	A	403	SIM	O18-C18-C19	-4.14	112.25	123.82
3	B	404	SIM	C9-C10-C11	-3.74	119.53	123.50
3	B	404	SIM	C7-C8-C9	-3.66	110.52	112.87
3	A	403	SIM	C22-C19-C18	-3.51	100.79	109.19
3	B	404	SIM	C14-O14-C18	-3.30	112.12	117.38
3	B	404	SIM	C22-C19-C18	-3.26	101.38	109.19
3	B	404	SIM	C24-C16-C17	-3.25	108.27	111.19
3	B	404	SIM	C23-C19-C22	3.18	116.86	109.36
3	A	403	SIM	C9-C10-C11	-2.71	120.63	123.50
3	A	403	SIM	C6-C7-C8	2.66	118.04	113.90
3	B	404	SIM	C23-C19-C18	-2.63	102.89	109.19
3	B	404	SIM	O14-C14-C15	2.62	113.51	108.08
3	B	404	SIM	C7-C8-C13	-2.62	108.94	112.50
3	B	404	SIM	C5-C4-C3	-2.59	110.23	114.18
3	B	404	SIM	C4-C3-C2	-2.57	108.08	113.19
3	A	403	SIM	C23-C19-C22	2.47	115.18	109.36
3	B	404	SIM	O14-C14-C13	2.44	114.72	107.54
3	A	403	SIM	C24-C16-C17	-2.40	109.03	111.19
3	B	404	SIM	C6-C7-C8	-2.17	110.53	113.90
3	A	403	SIM	O14-C14-C13	2.13	113.81	107.54
3	A	403	SIM	C23-C19-C18	-2.09	104.19	109.19

There are no chirality outliers.

All (15) torsion outliers are listed below:

Mol	Chain	Res	Type	Atoms
3	A	403	SIM	C1-C2-C3-O3
3	A	403	SIM	C1-C2-C3-C4
3	A	403	SIM	C18-C19-C20-C21
3	B	404	SIM	C1-C2-C3-O3
3	B	404	SIM	C1-C2-C3-C4
3	A	403	SIM	C2-C3-C4-C5
3	A	403	SIM	O5-C5-C6-C7
3	A	403	SIM	O3-C3-C4-C5
3	A	403	SIM	C22-C19-C20-C21
3	A	403	SIM	C23-C19-C20-C21
3	B	404	SIM	C22-C19-C20-C21
3	B	404	SIM	C23-C19-C20-C21
3	B	404	SIM	C18-C19-C20-C21

Continued on next page...

Continued from previous page...

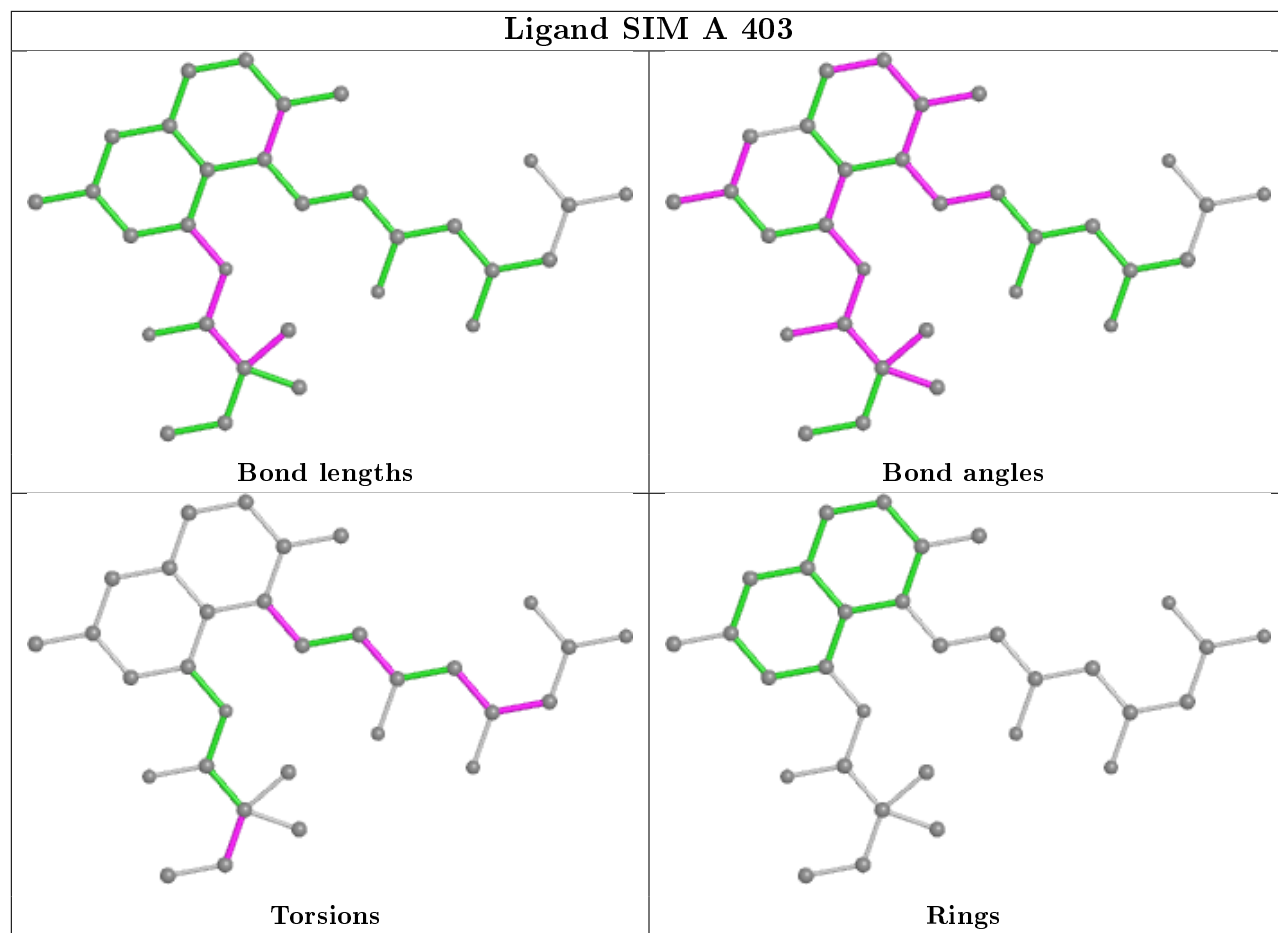
Mol	Chain	Res	Type	Atoms
3	B	404	SIM	O3-C3-C4-C5
3	A	403	SIM	C6-C7-C8-C9

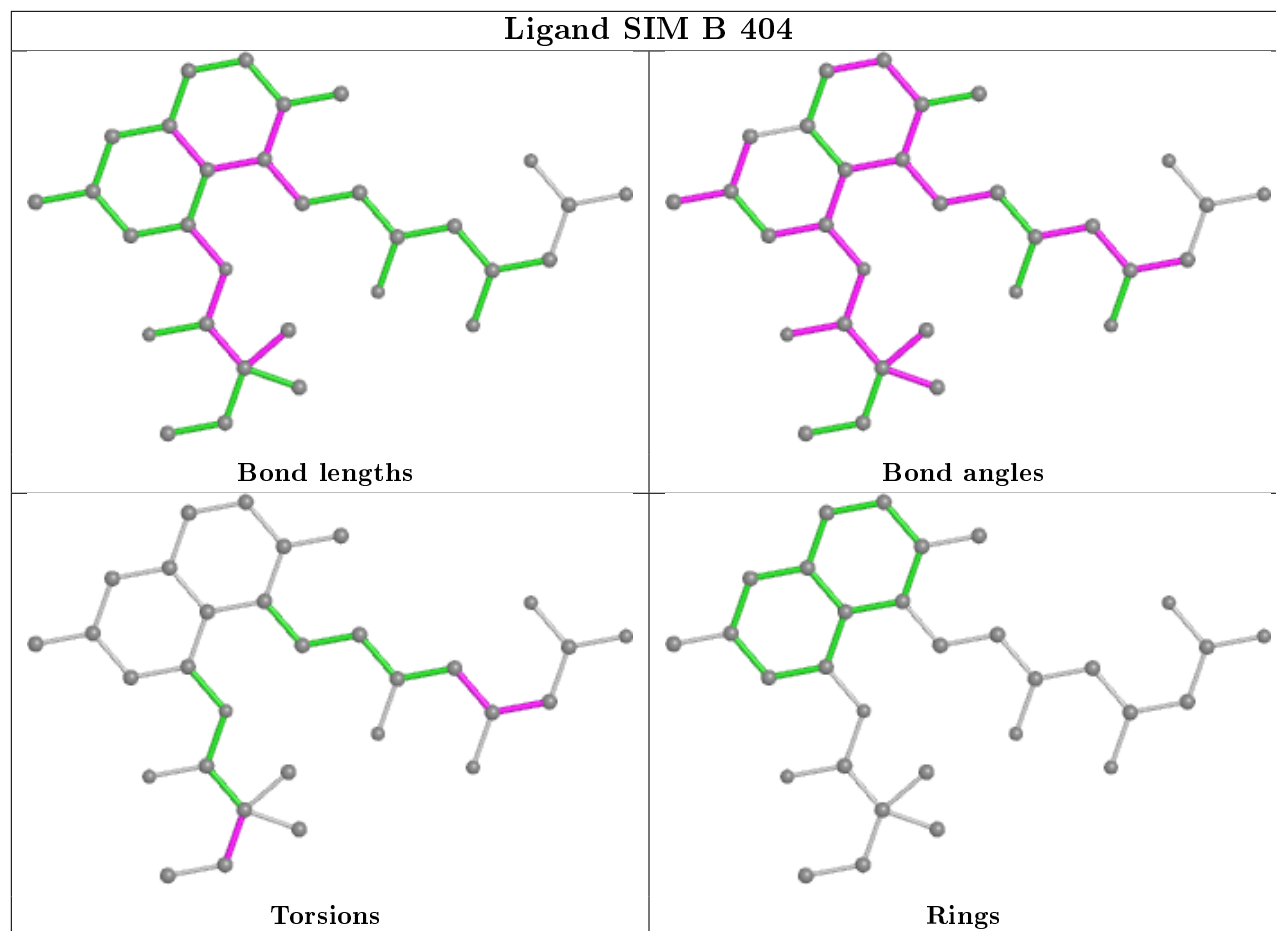
There are no ring outliers.

7 monomers are involved in 65 short contacts:

Mol	Chain	Res	Type	Clashes	Symm-Clashes
3	A	403	SIM	23	0
2	B	401	144	10	0
2	A	401	144	4	0
3	B	404	SIM	13	0
2	B	403	144	7	1
2	A	402	144	6	0
2	B	402	144	1	0

The following is a two-dimensional graphical depiction of Mogul quality analysis of bond lengths, bond angles, torsion angles, and ring geometry for all instances of the Ligand of Interest. In addition, ligands with molecular weight > 250 and outliers as shown on the validation Tables will also be included. For torsion angles, if less than 5% of the Mogul distribution of torsion angles is within 10 degrees of the torsion angle in question, then that torsion angle is considered an outlier. Any bond that is central to one or more torsion angles identified as an outlier by Mogul will be highlighted in the graph. For rings, the root-mean-square deviation (RMSD) between the ring in question and similar rings identified by Mogul is calculated over all ring torsion angles. If the average RMSD is greater than 60 degrees and the minimal RMSD between the ring in question and any Mogul-identified rings is also greater than 60 degrees, then that ring is considered an outlier. The outliers are highlighted in purple. The color gray indicates Mogul did not find sufficient equivalents in the CSD to analyse the geometry.





5.7 Other polymers [i](#)

There are no such residues in this entry.

5.8 Polymer linkage issues [i](#)

There are no chain breaks in this entry.

6 Fit of model and data ⓘ

6.1 Protein, DNA and RNA chains ⓘ

In the following table, the column labelled ‘#RSRZ> 2’ contains the number (and percentage) of RSRZ outliers, followed by percent RSRZ outliers for the chain as percentile scores relative to all X-ray entries and entries of similar resolution. The OWAB column contains the minimum, median, 95th percentile and maximum values of the occupancy-weighted average B-factor per residue. The column labelled ‘Q< 0.9’ lists the number of (and percentage) of residues with an average occupancy less than 0.9.

Mol	Chain	Analysed	<RSRZ>	#RSRZ>2	OWAB(Å ²)	Q<0.9
1	A	400/400 (100%)	-0.16	20 (5%) 28 27	18, 28, 59, 114	0
1	B	400/400 (100%)	-0.27	17 (4%) 35 33	18, 27, 58, 114	0
All	All	800/800 (100%)	-0.21	37 (4%) 32 31	18, 27, 59, 114	0

All (37) RSRZ outliers are listed below:

Mol	Chain	Res	Type	RSRZ
1	B	145	GLU	6.0
1	B	142	ALA	6.0
1	A	142	ALA	5.7
1	B	143	ASN	5.3
1	A	98	PHE	5.3
1	B	146	ASN	5.2
1	A	141	TYR	5.0
1	B	144	PRO	5.0
1	B	141	TYR	4.7
1	A	139	ALA	4.5
1	A	146	ASN	4.5
1	A	144	PRO	4.5
1	A	99	THR	4.4
1	A	102	GLU	4.1
1	A	100	ASP	4.0
1	A	143	ASN	4.0
1	B	100	ASP	3.9
1	B	239	GLY	3.8
1	A	101	ASP	3.7
1	A	145	GLU	3.5
1	A	147	GLU	3.5
1	B	99	THR	3.4
1	B	136	LYS	3.1
1	A	103	SER	3.0

Continued on next page...

Continued from previous page...

Mol	Chain	Res	Type	RSRZ
1	B	140	GLN	2.9
1	A	140	GLN	2.9
1	B	147	GLU	2.7
1	B	237	GLY	2.6
1	B	103	SER	2.5
1	B	101	ASP	2.4
1	A	239	GLY	2.3
1	B	98	PHE	2.2
1	A	136	LYS	2.2
1	A	104	PRO	2.2
1	A	96	THR	2.2
1	B	139	ALA	2.1
1	A	371	PRO	2.0

6.2 Non-standard residues in protein, DNA, RNA chains [i](#)

There are no non-standard protein/DNA/RNA residues in this entry.

6.3 Carbohydrates [i](#)

There are no monosaccharides in this entry.

6.4 Ligands [i](#)

In the following table, the Atoms column lists the number of modelled atoms in the group and the number defined in the chemical component dictionary. The B-factors column lists the minimum, median, 95th percentile and maximum values of B factors of atoms in the group. The column labelled 'Q< 0.9' lists the number of atoms with occupancy less than 0.9.

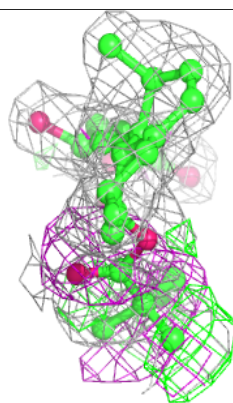
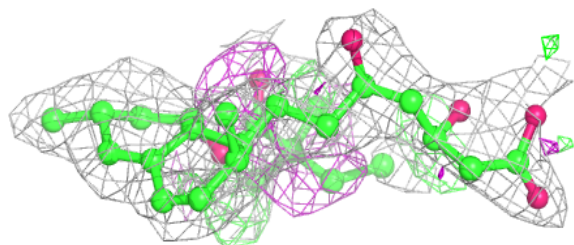
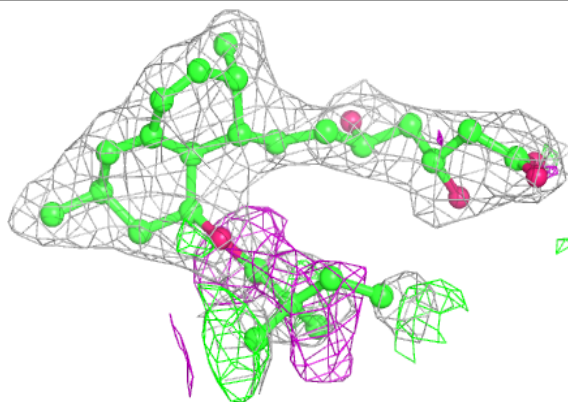
Mol	Type	Chain	Res	Atoms	RSCC	RSR	B-factors(\AA^2)	Q<0.9
3	SIM	B	404	31/31	0.75	0.24	23,33,59,66	0
3	SIM	A	403	31/31	0.81	0.21	24,36,57,67	0
2	144	A	402	8/8	0.83	0.27	44,53,66,67	0
2	144	A	401	8/8	0.86	0.32	49,57,61,62	0
2	144	B	403	8/8	0.87	0.24	38,44,47,54	0
2	144	B	401	8/8	0.92	0.18	26,33,35,49	0
2	144	B	402	8/8	0.93	0.26	39,49,54,60	0

The following is a graphical depiction of the model fit to experimental electron density of all instances of the Ligand of Interest. In addition, ligands with molecular weight > 250 and outliers

as shown on the geometry validation Tables will also be included. Each fit is shown from different orientation to approximate a three-dimensional view.

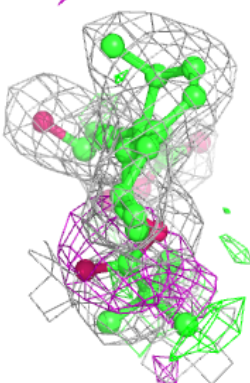
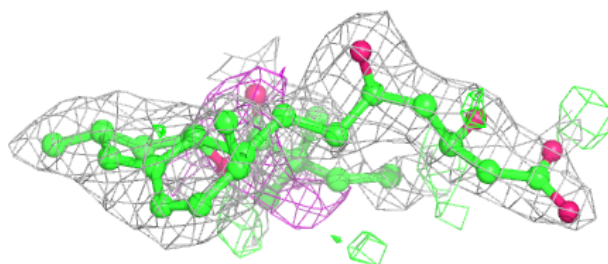
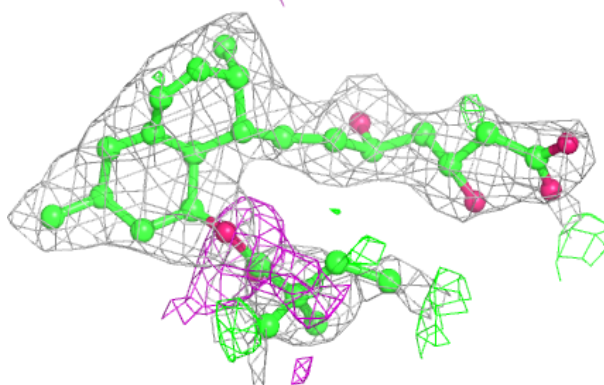
Electron density around SIM B 404:

$2mF_o-DF_c$ (at 0.7 rmsd) in gray
 mF_o-DF_c (at 3 rmsd) in purple (negative)
and green (positive)



Electron density around SIM A 403:

$2mF_o-DF_c$ (at 0.7 rmsd) in gray
 mF_o-DF_c (at 3 rmsd) in purple (negative)
and green (positive)



6.5 Other polymers [i](#)

There are no such residues in this entry.