



wwPDB X-ray Structure Validation Summary Report ⓘ

May 16, 2020 – 11:21 am BST

PDB ID : 1KK7
Title : SCALLOP MYOSIN IN THE NEAR RIGOR CONFORMATION
Authors : Himmel, D.M.; Gourinath, S.; Reshetnikova, L.; Shen, Y.; Szent-Gyorgyi, A.G.; Cohen, C.
Deposited on : 2001-12-06
Resolution : 3.20 Å(reported)

This is a wwPDB X-ray Structure Validation Summary Report for a publicly released PDB entry.

We welcome your comments at validation@mail.wwpdb.org

A user guide is available at

<https://www.wwpdb.org/validation/2017/XrayValidationReportHelp>

with specific help available everywhere you see the ⓘ symbol.

The following versions of software and data (see [references ⓘ](#)) were used in the production of this report:

MolProbity : 4.02b-467
Mogul : 1.8.5 (274361), CSD as541be (2020)
Xtriage (Phenix) : 1.13
EDS : 2.11
Percentile statistics : 20191225.v01 (using entries in the PDB archive December 25th 2019)
Refmac : 5.8.0158
CCP4 : 7.0.044 (Gargrove)
Ideal geometry (proteins) : Engh & Huber (2001)
Ideal geometry (DNA, RNA) : Parkinson et al. (1996)
Validation Pipeline (wwPDB-VP) : 2.11

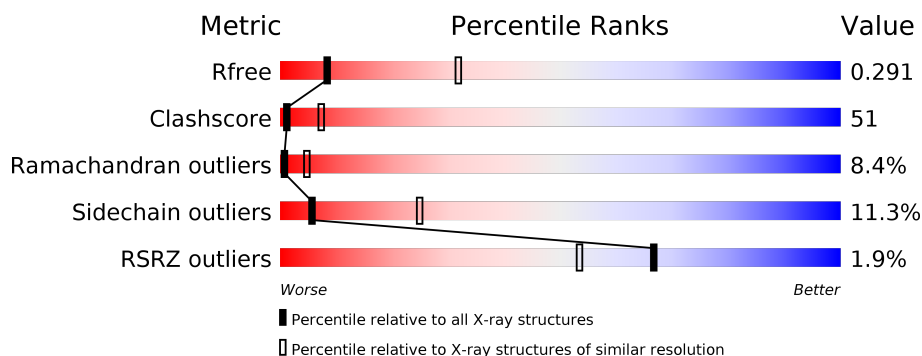
1 Overall quality at a glance ⓘ

The following experimental techniques were used to determine the structure:

X-RAY DIFFRACTION

The reported resolution of this entry is 3.20 Å.

Percentile scores (ranging between 0-100) for global validation metrics of the entry are shown in the following graphic. The table shows the number of entries on which the scores are based.



Metric	Whole archive (#Entries)	Similar resolution (#Entries, resolution range(Å))
R_{free}	130704	1133 (3.20-3.20)
Clashscore	141614	1253 (3.20-3.20)
Ramachandran outliers	138981	1234 (3.20-3.20)
Sidechain outliers	138945	1233 (3.20-3.20)
RSRZ outliers	127900	1095 (3.20-3.20)

The table below summarises the geometric issues observed across the polymeric chains and their fit to the electron density. The red, orange, yellow and green segments on the lower bar indicate the fraction of residues that contain outliers for ≥ 3 , 2, 1 and 0 types of geometric quality criteria respectively. A grey segment represents the fraction of residues that are not modelled. The numeric value for each fraction is indicated below the corresponding segment, with a dot representing fractions $\leq 5\%$. The upper red bar (where present) indicates the fraction of residues that have poor fit to the electron density. The numeric value is given above the bar.

Mol	Chain	Length	Quality of chain
1	A	837	<div> <div>%</div> <div> <div></div> <div>36%</div> <div>49%</div> <div>10%</div> <div>• •</div> </div> </div>
2	Y	156	<div> <div>9%</div> <div> <div></div> <div>35%</div> <div>44%</div> <div>13%</div> <div>• 8%</div> </div> </div>
3	Z	156	<div> <div>%</div> <div> <div></div> <div>35%</div> <div>53%</div> <div>10%</div> <div>• •</div> </div> </div>

2 Entry composition

There are 7 unique types of molecules in this entry. The entry contains 8147 atoms, of which 0 are hydrogens and 0 are deuteriums.

In the tables below, the ZeroOcc column contains the number of atoms modelled with zero occupancy, the AltConf column contains the number of residues with at least one atom in alternate conformation and the Trace column contains the number of residues modelled with at most 2 atoms.

- Molecule 1 is a protein called MYOSIN HEAVY CHAIN, STRIATED MUSCLE.

Mol	Chain	Residues	Atoms					ZeroOcc	AltConf	Trace
1	A	803	Total	C	N	O	S	5	0	0
			5985	3802	1020	1130	33			

- Molecule 2 is a protein called MYOSIN REGULATORY LIGHT CHAIN, STRIATED ADDUCTOR MUSCLE.

Mol	Chain	Residues	Atoms					ZeroOcc	AltConf	Trace
2	Y	144	Total	C	N	O	S	0	0	0
			1011	638	162	203	8			

- Molecule 3 is a protein called MYOSIN ESSENTIAL LIGHT CHAIN, STRIATED ADDUCTOR MUSCLE.

Mol	Chain	Residues	Atoms					ZeroOcc	AltConf	Trace
3	Z	154	Total	C	N	O	S	0	0	0
			1133	720	182	224	7			

- Molecule 4 is SULFATE ION (three-letter code: SO4) (formula: O₄S).



Mol	Chain	Residues	Atoms			ZeroOcc	AltConf
4	A	1	Total	O	S	0	0
			5	4	1		

- Molecule 5 is MAGNESIUM ION (three-letter code: MG) (formula: Mg).

Mol	Chain	Residues	Atoms		ZeroOcc	AltConf
5	A	1	Total	Mg	0	0
			1	1		
5	Y	1	Total	Mg	0	0
			1	1		

- Molecule 6 is CALCIUM ION (three-letter code: CA) (formula: Ca).

Mol	Chain	Residues	Atoms		ZeroOcc	AltConf
6	Z	1	Total	Ca	0	0
			1	1		

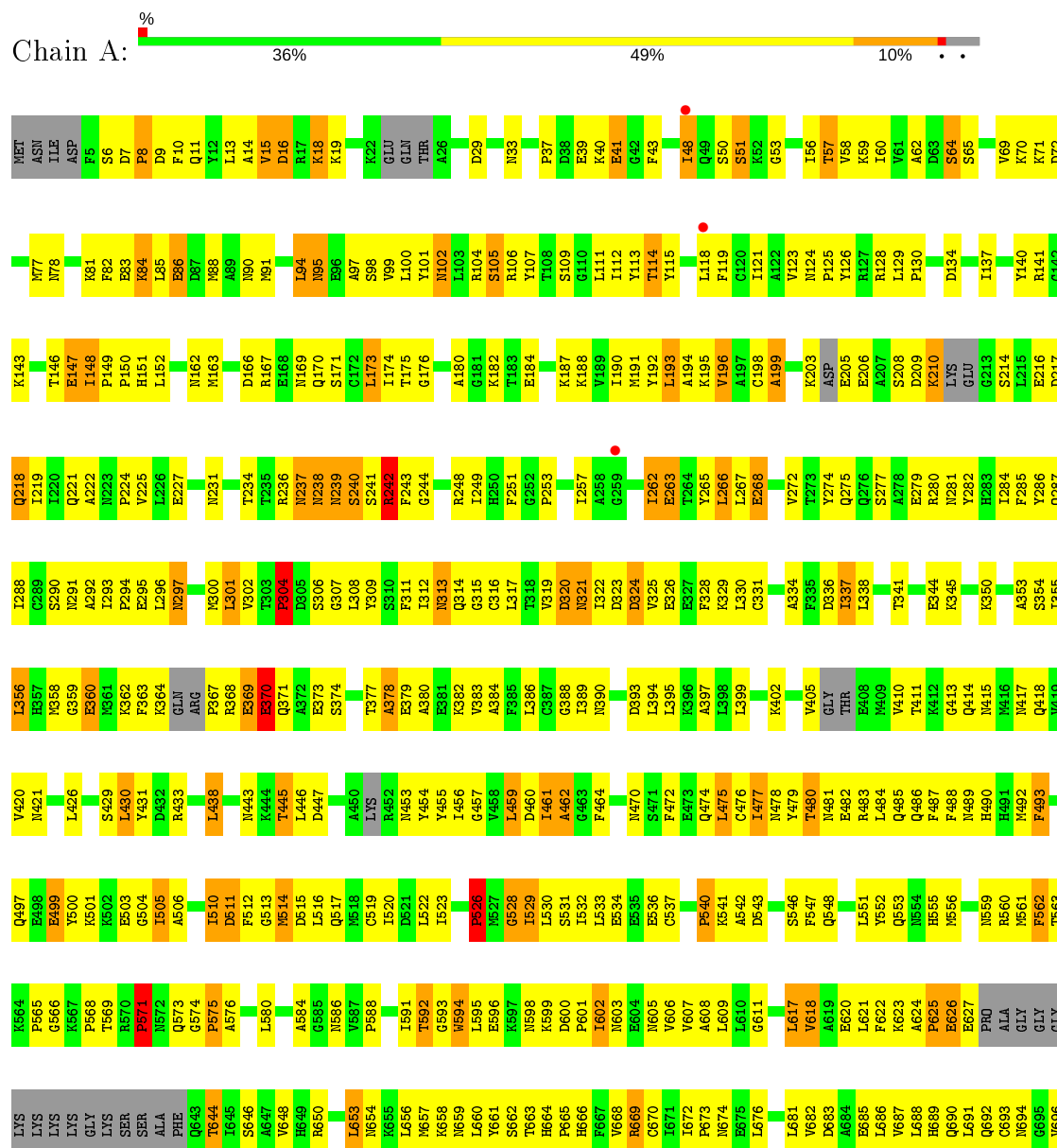
- Molecule 7 is water.

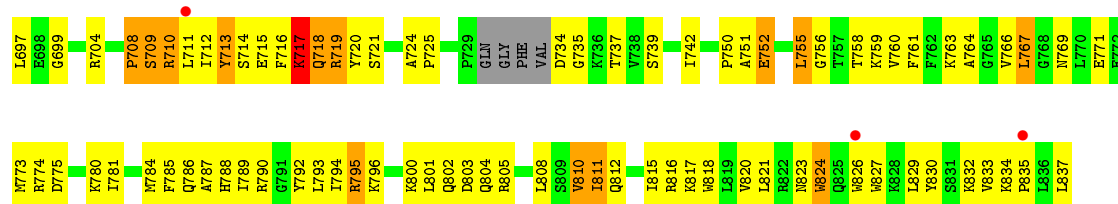
Mol	Chain	Residues	Atoms		ZeroOcc	AltConf
7	A	7	Total	O	0	0
			7	7		
7	Y	1	Total	O	0	0
			1	1		
7	Z	2	Total	O	0	0
			2	2		

3 Residue-property plots

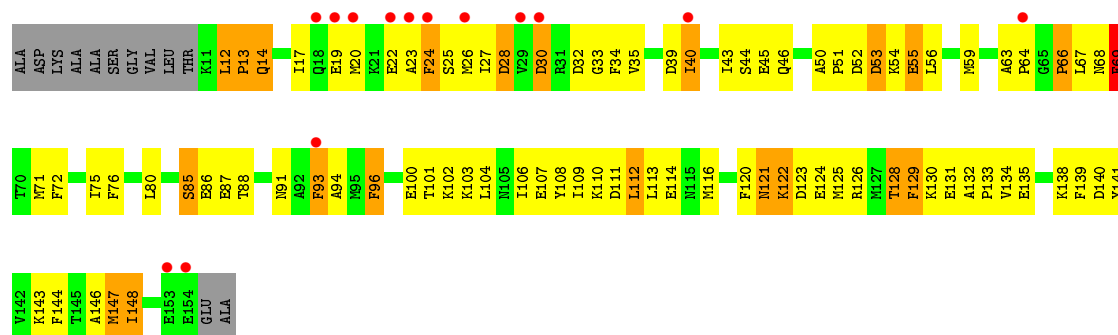
These plots are drawn for all protein, RNA and DNA chains in the entry. The first graphic for a chain summarises the proportions of the various outlier classes displayed in the second graphic. The second graphic shows the sequence view annotated by issues in geometry and electron density. Residues are color-coded according to the number of geometric quality criteria for which they contain at least one outlier: green = 0, yellow = 1, orange = 2 and red = 3 or more. A red dot above a residue indicates a poor fit to the electron density ($RSRZ > 2$). Stretches of 2 or more consecutive residues without any outlier are shown as a green connector. Residues present in the sample, but not in the model, are shown in grey.

• Molecule 1: MYOSIN HEAVY CHAIN, STRIATED MUSCLE

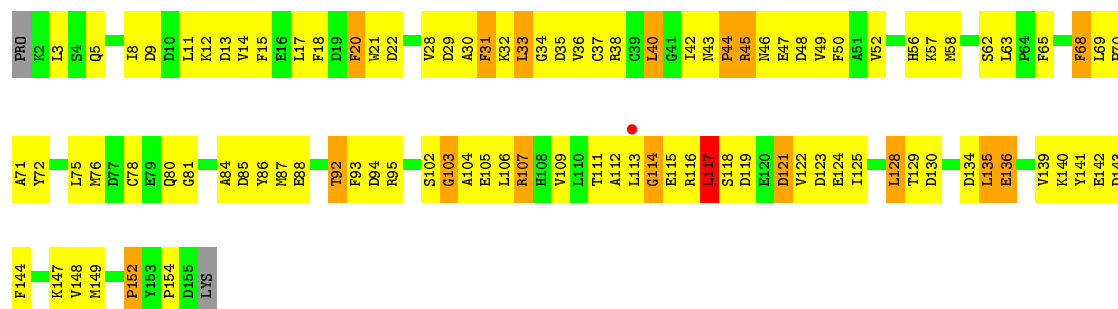




● Molecule 2: MYOSIN REGULATORY LIGHT CHAIN, STRIATED ADDUCTOR MUSCLE



● Molecule 3: MYOSIN ESSENTIAL LIGHT CHAIN, STRIATED ADDUCTOR MUSCLE



4 Data and refinement statistics

Property	Value	Source
Space group	P 1 21 1	Depositor
Cell constants a, b, c, α , β , γ	159.85Å 51.23Å 84.07Å 90.00° 99.48° 90.00°	Depositor
Resolution (Å)	48.72 – 3.20 48.72 – 3.18	Depositor EDS
% Data completeness (in resolution range)	84.1 (48.72-3.20) 83.2 (48.72-3.18)	Depositor EDS
R_{merge}	(Not available)	Depositor
R_{sym}	0.11	Depositor
$\langle I/\sigma(I) \rangle$ ¹	3.65 (at 3.19Å)	Xtriage
Refinement program	CNS 1.0	Depositor
R, R_{free}	0.259 , 0.313 0.256 , 0.291	Depositor DCC
R_{free} test set	1411 reflections (7.34%)	wwPDB-VP
Wilson B-factor (Å ²)	79.2	Xtriage
Anisotropy	0.567	Xtriage
Bulk solvent k_{sol} (e/Å ³), B_{sol} (Å ²)	0.28 , 120.3	EDS
L-test for twinning ²	$\langle L \rangle = 0.47$, $\langle L^2 \rangle = 0.30$	Xtriage
Estimated twinning fraction	No twinning to report.	Xtriage
F_o, F_c correlation	0.89	EDS
Total number of atoms	8147	wwPDB-VP
Average B, all atoms (Å ²)	84.0	wwPDB-VP

Xtriage's analysis on translational NCS is as follows: *The largest off-origin peak in the Patterson function is 4.84% of the height of the origin peak. No significant pseudotranslation is detected.*

¹Intensities estimated from amplitudes.

²Theoretical values of $\langle |L| \rangle$, $\langle L^2 \rangle$ for acentric reflections are 0.5, 0.333 respectively for untwinned datasets, and 0.375, 0.2 for perfectly twinned datasets.

5 Model quality ⓘ

5.1 Standard geometry ⓘ

Bond lengths and bond angles in the following residue types are not validated in this section: MG, CA, SO4

The Z score for a bond length (or angle) is the number of standard deviations the observed value is removed from the expected value. A bond length (or angle) with $|Z| > 5$ is considered an outlier worth inspection. RMSZ is the root-mean-square of all Z scores of the bond lengths (or angles).

Mol	Chain	Bond lengths		Bond angles	
		RMSZ	$\# Z > 5$	RMSZ	$\# Z > 5$
1	A	0.45	6/6101 (0.1%)	0.68	3/8285 (0.0%)
2	Y	0.39	0/1027	0.71	2/1392 (0.1%)
3	Z	0.42	0/1156	0.75	2/1569 (0.1%)
All	All	0.44	6/8284 (0.1%)	0.70	7/11246 (0.1%)

The worst 5 of 6 bond length outliers are listed below:

Mol	Chain	Res	Type	Atoms	Z	Observed(Å)	Ideal(Å)
1	A	369	GLU	C-N	-7.86	1.16	1.34
1	A	370	GLU	CD-OE2	6.83	1.33	1.25
1	A	370	GLU	C-N	5.92	1.47	1.34
1	A	704	ARG	CZ-NH1	5.70	1.40	1.33
1	A	370	GLU	CD-OE1	5.34	1.31	1.25

The worst 5 of 7 bond angle outliers are listed below:

Mol	Chain	Res	Type	Atoms	Z	Observed(°)	Ideal(°)
3	Z	114	GLY	N-CA-C	-8.69	91.37	113.10
1	A	238	ASN	N-CA-C	-6.20	94.25	111.00
1	A	666	HIS	N-CA-C	-5.88	95.14	111.00
3	Z	117	LEU	N-CA-C	-5.80	95.34	111.00
2	Y	14	GLN	N-CA-C	5.73	126.47	111.00

There are no chirality outliers.

There are no planarity outliers.

5.2 Too-close contacts ⓘ

In the following table, the Non-H and H(model) columns list the number of non-hydrogen atoms and hydrogen atoms in the chain respectively. The H(added) column lists the number of hydrogen atoms added and optimized by MolProbity. The Clashes column lists the number of clashes within the asymmetric unit, whereas Symm-Clashes lists symmetry related clashes.

Mol	Chain	Non-H	H(model)	H(added)	Clashes	Symm-Clashes
1	A	5985	0	5526	574	0
2	Y	1011	0	860	144	0
3	Z	1133	0	995	113	0
4	A	5	0	0	1	0
5	A	1	0	0	0	0
5	Y	1	0	0	0	0
6	Z	1	0	0	0	0
7	A	7	0	0	0	0
7	Y	1	0	0	0	0
7	Z	2	0	0	0	0
All	All	8147	0	7381	793	0

The all-atom clashscore is defined as the number of clashes found per 1000 atoms (including hydrogen atoms). The all-atom clashscore for this structure is 51.

The worst 5 of 793 close contacts within the same asymmetric unit are listed below, sorted by their clash magnitude.

Atom-1	Atom-2	Interatomic distance (Å)	Clash overlap (Å)
1:A:833:VAL:HG11	2:Y:23:ALA:HA	1.12	1.11
1:A:321:ASN:HD22	1:A:321:ASN:N	1.48	1.06
1:A:321:ASN:H	1:A:321:ASN:ND2	1.44	1.03
1:A:459:LEU:HD12	1:A:460:ASP:H	1.24	1.01
1:A:56:ILE:HG22	1:A:57:THR:H	1.26	1.00

There are no symmetry-related clashes.

5.3 Torsion angles ⓘ

5.3.1 Protein backbone ⓘ

In the following table, the Percentiles column shows the percent Ramachandran outliers of the chain as a percentile score with respect to all X-ray entries followed by that with respect to entries of similar resolution.

The Analysed column shows the number of residues for which the backbone conformation was

analysed, and the total number of residues.

Mol	Chain	Analysed	Favoured	Allowed	Outliers	Percentiles	
1	A	785/837 (94%)	568 (72%)	149 (19%)	68 (9%)	1	4
2	Y	142/156 (91%)	102 (72%)	26 (18%)	14 (10%)	0	3
3	Z	152/156 (97%)	107 (70%)	36 (24%)	9 (6%)	1	12
All	All	1079/1149 (94%)	777 (72%)	211 (20%)	91 (8%)	1	5

5 of 91 Ramachandran outliers are listed below:

Mol	Chain	Res	Type
1	A	62	ALA
1	A	71	LYS
1	A	206	GLU
1	A	237	ASN
1	A	242	ARG

5.3.2 Protein sidechains ⓘ

In the following table, the Percentiles column shows the percent sidechain outliers of the chain as a percentile score with respect to all X-ray entries followed by that with respect to entries of similar resolution.

The Analysed column shows the number of residues for which the sidechain conformation was analysed, and the total number of residues.

Mol	Chain	Analysed	Rotameric	Outliers	Percentiles	
1	A	583/730 (80%)	522 (90%)	61 (10%)	7	28
2	Y	89/133 (67%)	77 (86%)	12 (14%)	4	18
3	Z	106/132 (80%)	91 (86%)	15 (14%)	3	15
All	All	778/995 (78%)	690 (89%)	88 (11%)	6	25

5 of 88 residues with a non-rotameric sidechain are listed below:

Mol	Chain	Res	Type
1	A	475	LEU
1	A	653	LEU
3	Z	115	GLU
1	A	477	ILE
1	A	526	PRO

Some sidechains can be flipped to improve hydrogen bonding and reduce clashes. 5 of 32 such

sidechains are listed below:

Mol	Chain	Res	Type
1	A	517	GLN
1	A	598	ASN
2	Y	14	GLN
1	A	555	HIS
1	A	603	ASN

5.3.3 RNA [i](#)

There are no RNA molecules in this entry.

5.4 Non-standard residues in protein, DNA, RNA chains [i](#)

There are no non-standard protein/DNA/RNA residues in this entry.

5.5 Carbohydrates [i](#)

There are no carbohydrates in this entry.

5.6 Ligand geometry [i](#)

Of 4 ligands modelled in this entry, 3 are monoatomic - leaving 1 for Mogul analysis.

In the following table, the Counts columns list the number of bonds (or angles) for which Mogul statistics could be retrieved, the number of bonds (or angles) that are observed in the model and the number of bonds (or angles) that are defined in the Chemical Component Dictionary. The Link column lists molecule types, if any, to which the group is linked. The Z score for a bond length (or angle) is the number of standard deviations the observed value is removed from the expected value. A bond length (or angle) with $|Z| > 2$ is considered an outlier worth inspection. RMSZ is the root-mean-square of all Z scores of the bond lengths (or angles).

Mol	Type	Chain	Res	Link	Bond lengths			Bond angles		
					Counts	RMSZ	$\# Z > 2$	Counts	RMSZ	$\# Z > 2$
4	SO4	A	995	5	4,4,4	0.21	0	6,6,6	0.17	0

There are no bond length outliers.

There are no bond angle outliers.

There are no chirality outliers.

There are no torsion outliers.

There are no ring outliers.

1 monomer is involved in 1 short contact:

Mol	Chain	Res	Type	Clashes	Symm-Clashes
4	A	995	SO4	1	0

5.7 Other polymers [i](#)

There are no such residues in this entry.

5.8 Polymer linkage issues [i](#)

The following chains have linkage breaks:

Mol	Chain	Number of breaks
1	A	1

All chain breaks are listed below:

Model	Chain	Residue-1	Atom-1	Residue-2	Atom-2	Distance (Å)
1	A	369:GLU	C	370:GLU	N	1.16

6 Fit of model and data [i](#)

6.1 Protein, DNA and RNA chains [i](#)

In the following table, the column labelled ‘#RSRZ> 2’ contains the number (and percentage) of RSRZ outliers, followed by percent RSRZ outliers for the chain as percentile scores relative to all X-ray entries and entries of similar resolution. The OWAB column contains the minimum, median, 95th percentile and maximum values of the occupancy-weighted average B-factor per residue. The column labelled ‘Q< 0.9’ lists the number of (and percentage) of residues with an average occupancy less than 0.9.

Mol	Chain	Analysed	<RSRZ>	#RSRZ>2	OWAB(Å ²)	Q<0.9
1	A	803/837 (95%)	-0.24	6 (0%) 87 81	23, 78, 140, 146	2 (0%)
2	Y	144/156 (92%)	0.05	14 (9%) 7 4	34, 117, 145, 147	0
3	Z	154/156 (98%)	-0.28	1 (0%) 89 83	32, 72, 133, 145	0
All	All	1101/1149 (95%)	-0.21	21 (1%) 66 53	23, 80, 144, 147	2 (0%)

The worst 5 of 21 RSRZ outliers are listed below:

Mol	Chain	Res	Type	RSRZ
2	Y	40	ILE	5.1
2	Y	23	ALA	4.8
1	A	826	TRP	4.1
2	Y	29	VAL	4.1
1	A	835	PRO	3.9

6.2 Non-standard residues in protein, DNA, RNA chains [i](#)

There are no non-standard protein/DNA/RNA residues in this entry.

6.3 Carbohydrates [i](#)

There are no carbohydrates in this entry.

6.4 Ligands [i](#)

In the following table, the Atoms column lists the number of modelled atoms in the group and the number defined in the chemical component dictionary. The B-factors column lists the minimum, median, 95th percentile and maximum values of B factors of atoms in the group. The column labelled ‘Q< 0.9’ lists the number of atoms with occupancy less than 0.9.

Mol	Type	Chain	Res	Atoms	RSCC	RSR	B-factors(\AA^2)	Q<0.9
4	SO4	A	995	5/5	0.90	0.26	74,89,107,134	0
6	CA	Z	998	1/1	0.91	0.30	107,107,107,107	0
5	MG	Y	997	1/1	0.94	0.14	118,118,118,118	0
5	MG	A	996	1/1	0.97	0.08	38,38,38,38	0

6.5 Other polymers [i](#)

There are no such residues in this entry.