



# Full wwPDB X-ray Structure Validation Report ⓘ

Sep 13, 2020 – 09:52 AM BST

PDB ID : 1KKP  
Title : Crystal Structure of Serine Hydroxymethyltransferase complexed with Serine  
Authors : Trivedi, V.; Gupta, A.; Jala, V.R.; Saravanan, P.; Rao, G.S.J.; Rao, N.A.; Savithri, H.S.; Subramanya, H.S.  
Deposited on : 2001-12-10  
Resolution : 1.93 Å(reported)

This is a Full wwPDB X-ray Structure Validation Report for a publicly released PDB entry.

We welcome your comments at [validation@mail.wwpdb.org](mailto:validation@mail.wwpdb.org)

A user guide is available at

<https://www.wwpdb.org/validation/2017/XrayValidationReportHelp>

with specific help available everywhere you see the ⓘ symbol.

---

The following versions of software and data (see [references ⓘ](#)) were used in the production of this report:

MolProbity : 4.02b-467  
Mogul : 1.8.5 (274361), CSD as541be (2020)  
Xtriage (Phenix) : 1.13  
EDS : 2.14.4.dev1  
Percentile statistics : 20191225.v01 (using entries in the PDB archive December 25th 2019)  
Refmac : 5.8.0158  
CCP4 : 7.0.044 (Gargrove)  
Ideal geometry (proteins) : Engh & Huber (2001)  
Ideal geometry (DNA, RNA) : Parkinson et al. (1996)  
Validation Pipeline (wwPDB-VP) : 2.14.4.dev1

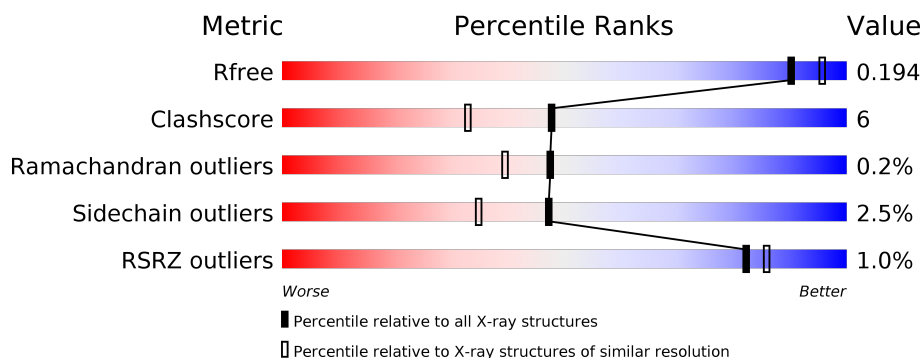
# 1 Overall quality at a glance

The following experimental techniques were used to determine the structure:

*X-RAY DIFFRACTION*

The reported resolution of this entry is 1.93 Å.

Percentile scores (ranging between 0-100) for global validation metrics of the entry are shown in the following graphic. The table shows the number of entries on which the scores are based.



Metric	Whole archive (#Entries)	Similar resolution (#Entries, resolution range(Å))
$R_{free}$	130704	4310 (1.96-1.92)
Clashscore	141614	1023 (1.94-1.94)
Ramachandran outliers	138981	1007 (1.94-1.94)
Sidechain outliers	138945	1007 (1.94-1.94)
RSRZ outliers	127900	4250 (1.96-1.92)

The table below summarises the geometric issues observed across the polymeric chains and their fit to the electron density. The red, orange, yellow and green segments on the lower bar indicate the fraction of residues that contain outliers for  $\geq 3$ , 2, 1 and 0 types of geometric quality criteria respectively. A grey segment represents the fraction of residues that are not modelled. The numeric value for each fraction is indicated below the corresponding segment, with a dot representing fractions  $\leq 5\%$ . The upper red bar (where present) indicates the fraction of residues that have poor fit to the electron density. The numeric value is given above the bar.

Mol	Chain	Length	Quality of chain
1	A	419	<div> <div></div> <div>84%</div> <div>11%</div> <div>••</div> </div>

## 2 Entry composition [i](#)

There are 4 unique types of molecules in this entry. The entry contains 3376 atoms, of which 0 are hydrogens and 0 are deuteriums.

In the tables below, the ZeroOcc column contains the number of atoms modelled with zero occupancy, the AltConf column contains the number of residues with at least one atom in alternate conformation and the Trace column contains the number of residues modelled with at most 2 atoms.

- Molecule 1 is a protein called Serine Hydroxymethyltransferase.

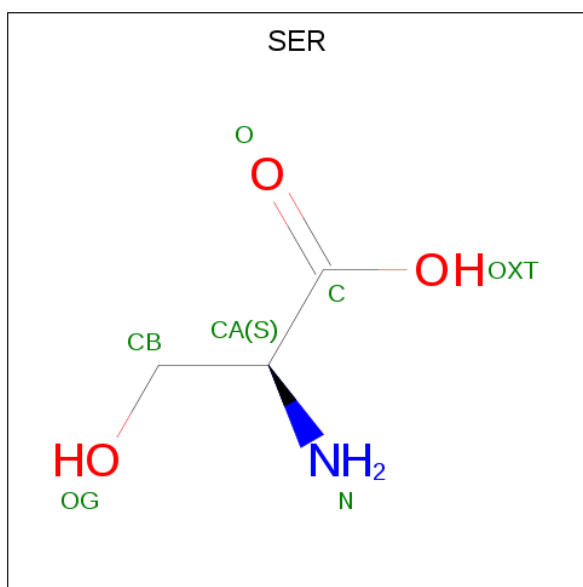
Mol	Chain	Residues	Atoms					ZeroOcc	AltConf	Trace
			Total	C	N	O	S			
1	A	405	3116	1970	551	584	11	0	0	0

- Molecule 2 is PYRIDOXAL-5'-PHOSPHATE (three-letter code: PLP) (formula: C<sub>8</sub>H<sub>10</sub>NO<sub>6</sub>P).



Mol	Chain	Residues	Atoms					ZeroOcc	AltConf
			Total	C	N	O	P		
2	A	1	15	8	1	5	1	0	0

- Molecule 3 is SERINE (three-letter code: SER) (formula: C<sub>3</sub>H<sub>7</sub>NO<sub>3</sub>).



Mol	Chain	Residues	Atoms				ZeroOcc	AltConf
3	A	1	Total	C	N	O	0	0
			7	3	1	3		

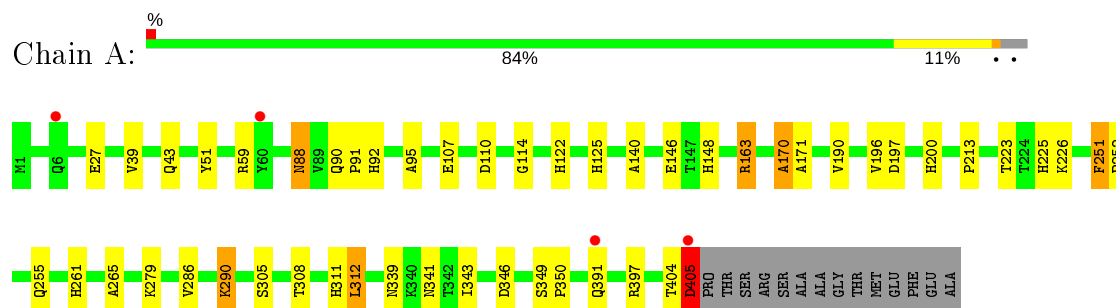
- Molecule 4 is water.

Mol	Chain	Residues	Atoms		ZeroOcc	AltConf
4	A	238	Total	O	0	0
			238	238		

### 3 Residue-property plots [i](#)

These plots are drawn for all protein, RNA, DNA and oligosaccharide chains in the entry. The first graphic for a chain summarises the proportions of the various outlier classes displayed in the second graphic. The second graphic shows the sequence view annotated by issues in geometry and electron density. Residues are color-coded according to the number of geometric quality criteria for which they contain at least one outlier: green = 0, yellow = 1, orange = 2 and red = 3 or more. A red dot above a residue indicates a poor fit to the electron density ( $RSRZ > 2$ ). Stretches of 2 or more consecutive residues without any outlier are shown as a green connector. Residues present in the sample, but not in the model, are shown in grey.

- Molecule 1: Serine Hydroxymethyltransferase



## 4 Data and refinement statistics

Property	Value	Source
Space group	P 21 21 2	Depositor
Cell constants a, b, c, $\alpha$ , $\beta$ , $\gamma$	60.98 Å 106.28 Å 56.89 Å 90.00° 90.00° 90.00°	Depositor
Resolution (Å)	10.00 – 1.93 14.96 – 1.93	Depositor EDS
% Data completeness (in resolution range)	(Not available) (10.00-1.93) 96.9 (14.96-1.93)	Depositor EDS
$R_{merge}$	0.04	Depositor
$R_{sym}$	(Not available)	Depositor
$\langle I/\sigma(I) \rangle$ <sup>1</sup>	9.30 (at 1.92 Å)	Xtriage
Refinement program	REFMAC	Depositor
R, $R_{free}$	0.179 , 0.206 0.168 , 0.194	Depositor DCC
$R_{free}$ test set	1385 reflections (5.02%)	wwPDB-VP
Wilson B-factor (Å <sup>2</sup> )	11.5	Xtriage
Anisotropy	0.434	Xtriage
Bulk solvent $k_{sol}$ (e/Å <sup>3</sup> ), $B_{sol}$ (Å <sup>2</sup> )	0.43 , 67.8	EDS
L-test for twinning <sup>2</sup>	$\langle  L  \rangle = 0.50$ , $\langle L^2 \rangle = 0.33$	Xtriage
Estimated twinning fraction	No twinning to report.	Xtriage
$F_o, F_c$ correlation	0.94	EDS
Total number of atoms	3376	wwPDB-VP
Average B, all atoms (Å <sup>2</sup> )	13.0	wwPDB-VP

Xtriage's analysis on translational NCS is as follows: *The largest off-origin peak in the Patterson function is 5.80% of the height of the origin peak. No significant pseudotranslation is detected.*

<sup>1</sup>Intensities estimated from amplitudes.

<sup>2</sup>Theoretical values of  $\langle |L| \rangle$ ,  $\langle L^2 \rangle$  for acentric reflections are 0.5, 0.333 respectively for untwinned datasets, and 0.375, 0.2 for perfectly twinned datasets.

## 5 Model quality

### 5.1 Standard geometry

Bond lengths and bond angles in the following residue types are not validated in this section: PLP

The Z score for a bond length (or angle) is the number of standard deviations the observed value is removed from the expected value. A bond length (or angle) with  $|Z| > 5$  is considered an outlier worth inspection. RMSZ is the root-mean-square of all Z scores of the bond lengths (or angles).

Mol	Chain	Bond lengths		Bond angles	
		RMSZ	$\# Z  > 5$	RMSZ	$\# Z  > 5$
1	A	0.47	0/3179	1.11	14/4309 (0.3%)

Chiral center outliers are detected by calculating the chiral volume of a chiral center and verifying if the center is modelled as a planar moiety or with the opposite hand. A planarity outlier is detected by checking planarity of atoms in a peptide group, atoms in a mainchain group or atoms of a sidechain that are expected to be planar.

Mol	Chain	#Chirality outliers	#Planarity outliers
1	A	0	2

There are no bond length outliers.

All (14) bond angle outliers are listed below:

Mol	Chain	Res	Type	Atoms	Z	Observed(°)	Ideal(°)
1	A	397	ARG	NE-CZ-NH2	-18.17	111.22	120.30
1	A	397	ARG	NE-CZ-NH1	11.89	126.24	120.30
1	A	397	ARG	CD-NE-CZ	11.12	139.17	123.60
1	A	163	ARG	NE-CZ-NH1	-8.85	115.87	120.30
1	A	251	PHE	CA-C-O	-7.53	104.30	120.10
1	A	252	PRO	N-CA-CB	7.23	111.98	103.30
1	A	252	PRO	CA-N-CD	-7.00	101.70	111.50
1	A	171	ALA	N-CA-CB	-6.31	101.27	110.10
1	A	59	ARG	NE-CZ-NH2	-6.19	117.20	120.30
1	A	397	ARG	CG-CD-NE	-5.69	99.86	111.80
1	A	163	ARG	NE-CZ-NH2	5.57	123.08	120.30
1	A	339	ASN	CB-CA-C	-5.42	99.55	110.40
1	A	405	ASP	CB-CG-OD2	5.35	123.12	118.30
1	A	312	LEU	CA-CB-CG	5.06	126.93	115.30

There are no chirality outliers.

All (2) planarity outliers are listed below:

Mol	Chain	Res	Type	Group
1	A	251	PHE	Mainchain,Peptide

## 5.2 Too-close contacts

In the following table, the Non-H and H(model) columns list the number of non-hydrogen atoms and hydrogen atoms in the chain respectively. The H(added) column lists the number of hydrogen atoms added and optimized by MolProbity. The Clashes column lists the number of clashes within the asymmetric unit, whereas Symm-Clashes lists symmetry related clashes.

Mol	Chain	Non-H	H(model)	H(added)	Clashes	Symm-Clashes
1	A	3116	0	3095	37	0
2	A	15	0	6	1	0
3	A	7	0	4	2	0
4	A	238	0	0	4	0
All	All	3376	0	3105	38	0

The all-atom clashscore is defined as the number of clashes found per 1000 atoms (including hydrogen atoms). The all-atom clashscore for this structure is 6.

All (38) close contacts within the same asymmetric unit are listed below, sorted by their clash magnitude.

Atom-1	Atom-2	Interatomic distance (Å)	Clash overlap (Å)
1:A:148:HIS:HD2	1:A:305:SER:H	1.19	0.86
1:A:290:LYS:HE2	1:A:308:THR:HG23	1.68	0.74
1:A:148:HIS:CD2	1:A:305:SER:H	2.08	0.71
1:A:92:HIS:H	1:A:255:GLN:HE22	1.39	0.69
1:A:286:VAL:HG13	1:A:290:LYS:NZ	2.11	0.66
1:A:261:HIS:H	1:A:261:HIS:CD2	2.15	0.65
1:A:290:LYS:N	1:A:290:LYS:HE3	2.16	0.60
1:A:391:GLN:HG2	4:A:829:HOH:O	2.03	0.59
1:A:286:VAL:HG13	1:A:290:LYS:HZ2	1.68	0.58
1:A:163:ARG:NH1	1:A:190:VAL:HB	2.20	0.56
1:A:290:LYS:CE	1:A:308:THR:HG23	2.34	0.56
1:A:122:HIS:H	1:A:125:HIS:CD2	2.27	0.53
1:A:223:THR:HB	1:A:225:HIS:CE1	2.44	0.52
1:A:88:ASN:HD22	1:A:91:PRO:HD3	1.76	0.50
1:A:343:ILE:O	1:A:346:ASP:HB2	2.14	0.48
1:A:88:ASN:ND2	1:A:91:PRO:HD3	2.28	0.48
1:A:95:ALA:HB2	4:A:810:HOH:O	2.12	0.48

*Continued on next page...*



*Continued from previous page...*

Atom-1	Atom-2	Interatomic distance (Å)	Clash overlap (Å)
2:A:501:PLP:O3	3:A:601:SER:N	2.47	0.48
1:A:311:HIS:H	1:A:311:HIS:HD1	1.61	0.47
1:A:404:THR:O	1:A:405:ASP:HB3	2.14	0.46
1:A:88:ASN:ND2	1:A:90:GLN:H	2.14	0.46
1:A:107:GLU:HG2	1:A:110:ASP:OD1	2.16	0.46
1:A:163:ARG:HH12	1:A:190:VAL:HA	1.81	0.45
1:A:170:ALA:HB3	1:A:197:ASP:O	2.16	0.45
1:A:27:GLU:HB2	4:A:617:HOH:O	2.16	0.44
1:A:279:LYS:HE2	4:A:694:HOH:O	2.17	0.43
1:A:286:VAL:HG13	1:A:290:LYS:HZ3	1.83	0.43
1:A:349:SER:HB2	1:A:350:PRO:HD2	2.01	0.42
1:A:39:VAL:HG13	1:A:265:ALA:HB1	2.01	0.42
1:A:290:LYS:HE3	1:A:290:LYS:CA	2.50	0.42
1:A:88:ASN:HD21	1:A:90:GLN:HB2	1.84	0.42
1:A:163:ARG:HH12	1:A:190:VAL:CA	2.33	0.42
1:A:90:GLN:N	1:A:91:PRO:CD	2.82	0.42
1:A:200:HIS:HE1	3:A:601:SER:O	2.03	0.41
1:A:114:GLY:O	1:A:140:ALA:HA	2.20	0.41
1:A:196:VAL:HG11	1:A:213:PRO:HB3	2.03	0.41
1:A:223:THR:HG21	1:A:226:LYS:NZ	2.36	0.40
1:A:261:HIS:CD2	1:A:261:HIS:N	2.85	0.40

There are no symmetry-related clashes.

## 5.3 Torsion angles [i](#)

### 5.3.1 Protein backbone [i](#)

In the following table, the Percentiles column shows the percent Ramachandran outliers of the chain as a percentile score with respect to all X-ray entries followed by that with respect to entries of similar resolution.

The Analysed column shows the number of residues for which the backbone conformation was analysed, and the total number of residues.

Mol	Chain	Analysed	Favoured	Allowed	Outliers	Percentiles
1	A	403/419 (96%)	392 (97%)	10 (2%)	1 (0%)	47 39

All (1) Ramachandran outliers are listed below:

Mol	Chain	Res	Type
1	A	170	ALA

### 5.3.2 Protein sidechains ⓘ

In the following table, the Percentiles column shows the percent sidechain outliers of the chain as a percentile score with respect to all X-ray entries followed by that with respect to entries of similar resolution.

The Analysed column shows the number of residues for which the sidechain conformation was analysed, and the total number of residues.

Mol	Chain	Analysed	Rotameric	Outliers	Percentiles
1	A	321/331 (97%)	313 (98%)	8 (2%)	47 35

All (8) residues with a non-rotameric sidechain are listed below:

Mol	Chain	Res	Type
1	A	43	GLN
1	A	51	TYR
1	A	88	ASN
1	A	146	GLU
1	A	290	LYS
1	A	312	LEU
1	A	341	ASN
1	A	405	ASP

Some sidechains can be flipped to improve hydrogen bonding and reduce clashes. All (14) such sidechains are listed below:

Mol	Chain	Res	Type
1	A	6	GLN
1	A	86	HIS
1	A	88	ASN
1	A	90	GLN
1	A	96	GLN
1	A	125	HIS
1	A	135	GLN
1	A	148	HIS
1	A	200	HIS
1	A	255	GLN
1	A	261	HIS
1	A	275	GLN
1	A	297	GLN

*Continued on next page...*

*Continued from previous page...*

Mol	Chain	Res	Type
1	A	386	ASN

### 5.3.3 RNA [i](#)

There are no RNA molecules in this entry.

## 5.4 Non-standard residues in protein, DNA, RNA chains [i](#)

There are no non-standard protein/DNA/RNA residues in this entry.

## 5.5 Carbohydrates [i](#)

There are no monosaccharides in this entry.

## 5.6 Ligand geometry [i](#)

2 ligands are modelled in this entry.

In the following table, the Counts columns list the number of bonds (or angles) for which Mogul statistics could be retrieved, the number of bonds (or angles) that are observed in the model and the number of bonds (or angles) that are defined in the Chemical Component Dictionary. The Link column lists molecule types, if any, to which the group is linked. The Z score for a bond length (or angle) is the number of standard deviations the observed value is removed from the expected value. A bond length (or angle) with  $|Z| > 2$  is considered an outlier worth inspection. RMSZ is the root-mean-square of all Z scores of the bond lengths (or angles).

Mol	Type	Chain	Res	Link	Bond lengths			Bond angles		
					Counts	RMSZ	$\# Z  > 2$	Counts	RMSZ	$\# Z  > 2$
2	PLP	A	501	3	15,15,16	1.69	4 (26%)	20,22,23	2.50	8 (40%)
3	SER	A	601	2	3,6,6	0.47	0	1,7,7	0.52	0

In the following table, the Chirals column lists the number of chiral outliers, the number of chiral centers analysed, the number of these observed in the model and the number defined in the Chemical Component Dictionary. Similar counts are reported in the Torsion and Rings columns. '-' means no outliers of that kind were identified.

Mol	Type	Chain	Res	Link	Chirals	Torsions	Rings
2	PLP	A	501	3	-	0/6/6/8	0/1/1/1
3	SER	A	601	2	-	0/2/6/6	-

All (4) bond length outliers are listed below:

Mol	Chain	Res	Type	Atoms	Z	Observed(Å)	Ideal(Å)
2	A	501	PLP	C3-C2	3.04	1.43	1.40
2	A	501	PLP	C4A-C4	-2.90	1.45	1.51
2	A	501	PLP	C3-C4	2.20	1.44	1.40
2	A	501	PLP	C6-N1	2.13	1.38	1.34

All (8) bond angle outliers are listed below:

Mol	Chain	Res	Type	Atoms	Z	Observed(°)	Ideal(°)
2	A	501	PLP	C2A-C2-C3	6.26	128.62	120.89
2	A	501	PLP	O4P-C5A-C5	4.14	117.25	109.35
2	A	501	PLP	C6-N1-C2	4.08	126.72	119.17
2	A	501	PLP	C5-C6-N1	-3.46	118.06	123.82
2	A	501	PLP	C3-C2-N1	-3.05	116.82	120.77
2	A	501	PLP	C3-C4-C5	2.57	121.52	118.74
2	A	501	PLP	C5A-C5-C6	-2.20	115.75	119.37
2	A	501	PLP	O3P-P-O1P	2.08	118.83	110.68

There are no chirality outliers.

There are no torsion outliers.

There are no ring outliers.

2 monomers are involved in 2 short contacts:

Mol	Chain	Res	Type	Clashes	Symm-Clashes
2	A	501	PLP	1	0
3	A	601	SER	2	0

## 5.7 Other polymers [i](#)

There are no such residues in this entry.

## 5.8 Polymer linkage issues [i](#)

There are no chain breaks in this entry.

## 6 Fit of model and data [i](#)

### 6.1 Protein, DNA and RNA chains [i](#)

In the following table, the column labelled ‘#RSRZ> 2’ contains the number (and percentage) of RSRZ outliers, followed by percent RSRZ outliers for the chain as percentile scores relative to all X-ray entries and entries of similar resolution. The OWAB column contains the minimum, median, 95<sup>th</sup> percentile and maximum values of the occupancy-weighted average B-factor per residue. The column labelled ‘Q< 0.9’ lists the number of (and percentage) of residues with an average occupancy less than 0.9.

Mol	Chain	Analysed	<RSRZ>	#RSRZ>2	OWAB(Å <sup>2</sup> )	Q<0.9
1	A	405/419 (96%)	-0.36	4 (0%) 82 86	7, 12, 20, 34	0

All (4) RSRZ outliers are listed below:

Mol	Chain	Res	Type	RSRZ
1	A	405	ASP	3.8
1	A	6	GLN	2.4
1	A	60	TYR	2.1
1	A	391	GLN	2.1

### 6.2 Non-standard residues in protein, DNA, RNA chains [i](#)

There are no non-standard protein/DNA/RNA residues in this entry.

### 6.3 Carbohydrates [i](#)

There are no monosaccharides in this entry.

### 6.4 Ligands [i](#)

In the following table, the Atoms column lists the number of modelled atoms in the group and the number defined in the chemical component dictionary. The B-factors column lists the minimum, median, 95<sup>th</sup> percentile and maximum values of B factors of atoms in the group. The column labelled ‘Q< 0.9’ lists the number of atoms with occupancy less than 0.9.

Mol	Type	Chain	Res	Atoms	RSCC	RSR	B-factors(Å <sup>2</sup> )	Q<0.9
3	SER	A	601	7/7	0.97	0.09	12,14,16,19	0
2	PLP	A	501	15/16	0.98	0.08	7,10,11,11	0

## 6.5 Other polymers ⓘ

There are no such residues in this entry.