



Full wwPDB X-ray Structure Validation Report ⓘ

Aug 8, 2020 – 09:49 AM BST

PDB ID : 4KKJ
Title : Crystal Structure of Haptocorrin in Complex with Cbi
Authors : Furger, E.; Frei, D.C.; Schibli, R.; Fischer, E.; Protá, A.E.
Deposited on : 2013-05-06
Resolution : 3.00 Å(reported)

This is a Full wwPDB X-ray Structure Validation Report for a publicly released PDB entry.

We welcome your comments at validation@mail.wwpdb.org

A user guide is available at

<https://www.wwpdb.org/validation/2017/XrayValidationReportHelp>

with specific help available everywhere you see the ⓘ symbol.

The following versions of software and data (see [references ⓘ](#)) were used in the production of this report:

MolProbity : 4.02b-467
Mogul : 1.8.5 (274361), CSD as541be (2020)
Xtriage (Phenix) : 1.13
EDS : 2.13.1
buster-report : 1.1.7 (2018)
Percentile statistics : 20191225.v01 (using entries in the PDB archive December 25th 2019)
Refmac : 5.8.0158
CCP4 : 7.0.044 (Gargrove)
Ideal geometry (proteins) : Engh & Huber (2001)
Ideal geometry (DNA, RNA) : Parkinson et al. (1996)
Validation Pipeline (wwPDB-VP) : 2.13.1

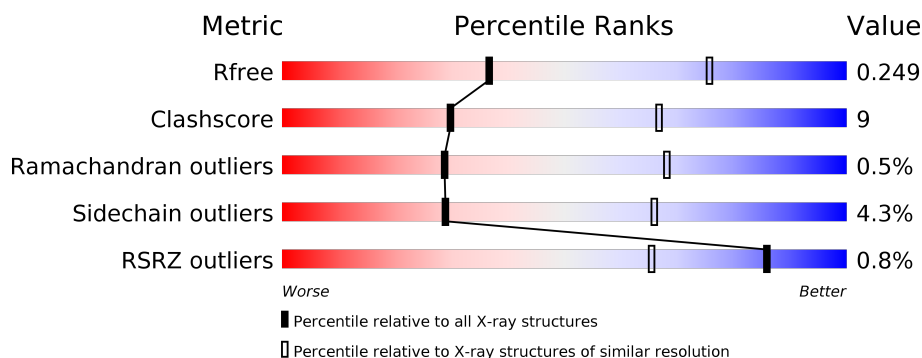
1 Overall quality at a glance

The following experimental techniques were used to determine the structure:

X-RAY DIFFRACTION

The reported resolution of this entry is 3.00 Å.

Percentile scores (ranging between 0-100) for global validation metrics of the entry are shown in the following graphic. The table shows the number of entries on which the scores are based.



Metric	Whole archive (#Entries)	Similar resolution (#Entries, resolution range(Å))
R_{free}	130704	2092 (3.00-3.00)
Clashscore	141614	2416 (3.00-3.00)
Ramachandran outliers	138981	2333 (3.00-3.00)
Sidechain outliers	138945	2336 (3.00-3.00)
RSRZ outliers	127900	1990 (3.00-3.00)

The table below summarises the geometric issues observed across the polymeric chains and their fit to the electron density. The red, orange, yellow and green segments on the lower bar indicate the fraction of residues that contain outliers for ≥ 3 , 2, 1 and 0 types of geometric quality criteria respectively. A grey segment represents the fraction of residues that are not modelled. The numeric value for each fraction is indicated below the corresponding segment, with a dot representing fractions $\leq 5\%$. The upper red bar (where present) indicates the fraction of residues that have poor fit to the electron density. The numeric value is given above the bar.

Mol	Chain	Length	Quality of chain
1	A	467	<div> <div style="width: 100%; height: 10px; position: relative;"> <div style="position: absolute; top: -10px; left: 0; width: 100%;">%</div> <div style="position: absolute; top: 10px; left: 0; width: 100%;">69% 15% • 15%</div> </div> </div>

The following table lists non-polymeric compounds, carbohydrate monomers and non-standard residues in protein, DNA, RNA chains that are outliers for geometric or electron-density-fit criteria:

Mol	Type	Chain	Res	Chirality	Geometry	Clashes	Electron density
2	NAG	A	505	-	-	-	X
2	NAG	A	506	-	-	-	X

Continued on next page...

Continued from previous page...

Mol	Type	Chain	Res	Chirality	Geometry	Clashes	Electron density
4	CYN	A	510	-	-	X	-

2 Entry composition

There are 5 unique types of molecules in this entry. The entry contains 3301 atoms, of which 0 are hydrogens and 0 are deuteriums.

In the tables below, the ZeroOcc column contains the number of atoms modelled with zero occupancy, the AltConf column contains the number of residues with at least one atom in alternate conformation and the Trace column contains the number of residues modelled with at most 2 atoms.

- Molecule 1 is a protein called Transcobalamin-1.

Mol	Chain	Residues	Atoms					ZeroOcc	AltConf	Trace
			Total	C	N	O	S			
1	A	398	3116	1967	515	616	18	0	0	0

There are 34 discrepancies between the modelled and reference sequences:

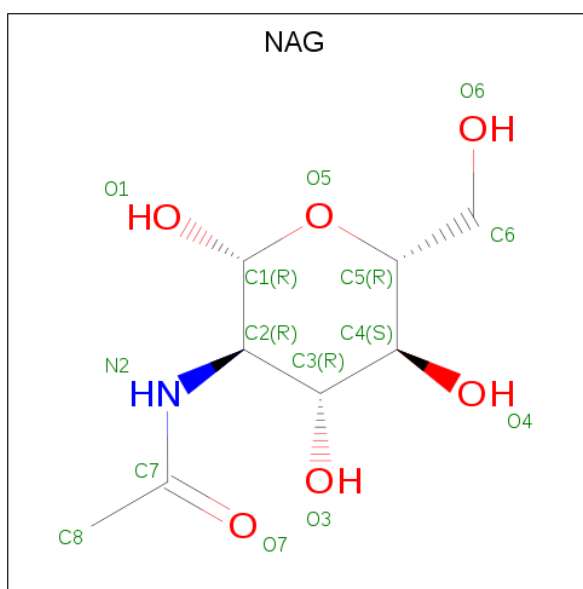
Chain	Residue	Modelled	Actual	Comment	Reference
A	411	LEU	-	expression tag	UNP P20061
A	412	VAL	-	expression tag	UNP P20061
A	413	PRO	-	expression tag	UNP P20061
A	414	ARG	-	expression tag	UNP P20061
A	415	GLY	-	expression tag	UNP P20061
A	416	SER	-	expression tag	UNP P20061
A	417	LEU	-	expression tag	UNP P20061
A	418	GLU	-	expression tag	UNP P20061
A	419	SER	-	expression tag	UNP P20061
A	420	ARG	-	expression tag	UNP P20061
A	421	GLY	-	expression tag	UNP P20061
A	422	PRO	-	expression tag	UNP P20061
A	423	PHE	-	expression tag	UNP P20061
A	424	GLU	-	expression tag	UNP P20061
A	425	GLN	-	expression tag	UNP P20061
A	426	LYS	-	expression tag	UNP P20061
A	427	LEU	-	expression tag	UNP P20061
A	428	ILE	-	expression tag	UNP P20061
A	429	SER	-	expression tag	UNP P20061
A	430	GLU	-	expression tag	UNP P20061
A	431	GLU	-	expression tag	UNP P20061
A	432	ASP	-	expression tag	UNP P20061
A	433	LEU	-	expression tag	UNP P20061
A	434	ASN	-	expression tag	UNP P20061
A	435	MET	-	expression tag	UNP P20061
A	436	HIS	-	expression tag	UNP P20061
A	437	THR	-	expression tag	UNP P20061

Continued on next page...

Continued from previous page...

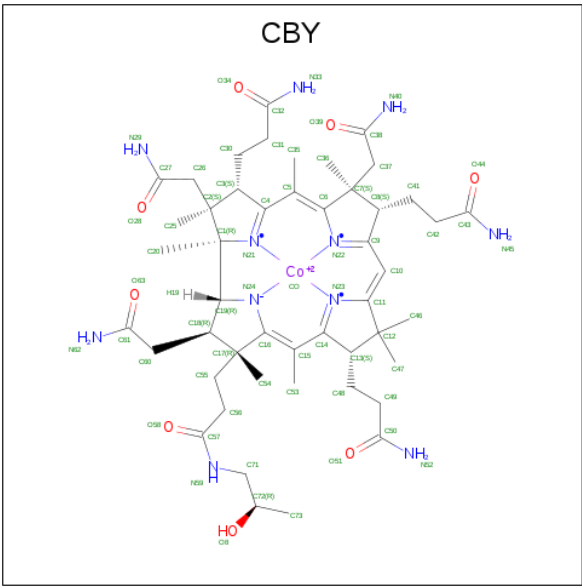
Chain	Residue	Modelled	Actual	Comment	Reference
A	438	GLY	-	expression tag	UNP P20061
A	439	HIS	-	expression tag	UNP P20061
A	440	HIS	-	expression tag	UNP P20061
A	441	HIS	-	expression tag	UNP P20061
A	442	HIS	-	expression tag	UNP P20061
A	443	HIS	-	expression tag	UNP P20061
A	444	HIS	-	expression tag	UNP P20061

- Molecule 2 is 2-acetamido-2-deoxy-beta-D-glucopyranose (three-letter code: NAG) (formula: $C_8H_{15}NO_6$).



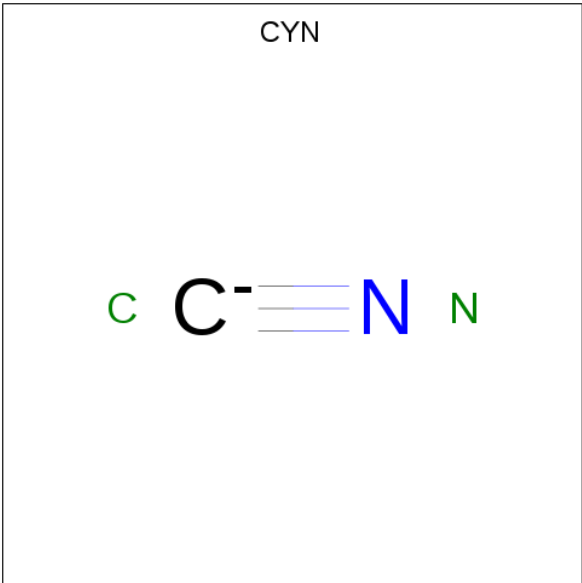
Mol	Chain	Residues	Atoms				ZeroOcc	AltConf
2	A	1	Total	C	N	O	0	0
			14	8	1	5		
2	A	1	Total	C	N	O	0	0
			14	8	1	5		
2	A	1	Total	C	N	O	0	0
			14	8	1	5		
2	A	1	Total	C	N	O	0	0
			14	8	1	5		
2	A	1	Total	C	N	O	0	0
			14	8	1	5		
2	A	1	Total	C	N	O	0	0
			14	8	1	5		

- Molecule 3 is COB(II)INAMIDE (three-letter code: CBY) (formula: C₄₈H₇₂CoN₁₁O₈).



Mol	Chain	Residues	Atoms				ZeroOcc	AltConf
3	A	1	Total	C	Co	N	0	1
			73	51	1	12		

- Molecule 4 is CYANIDE ION (three-letter code: CYN) (formula: CN).



Mol	Chain	Residues	Atoms			ZeroOcc	AltConf
4	A	1	Total	C	N	0	0
			2	1	1		
4	A	1	Total	C	N	0	0
			2	1	1		

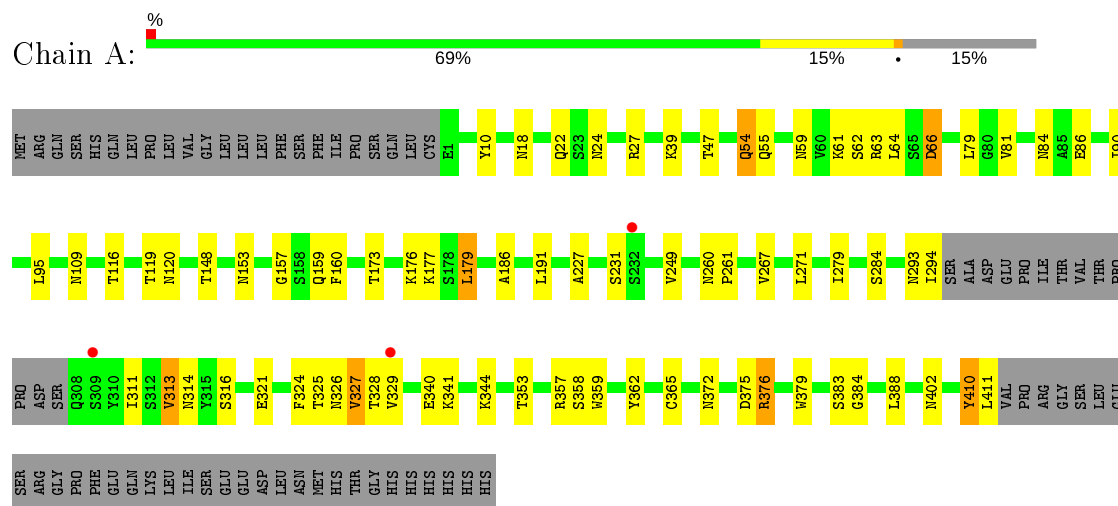
- Molecule 5 is water.

Mol	Chain	Residues	Atoms		ZeroOcc	AltConf
5	A	10	Total	O	0	0
			10	10		

3 Residue-property plots [i](#)

These plots are drawn for all protein, RNA, DNA and oligosaccharide chains in the entry. The first graphic for a chain summarises the proportions of the various outlier classes displayed in the second graphic. The second graphic shows the sequence view annotated by issues in geometry and electron density. Residues are color-coded according to the number of geometric quality criteria for which they contain at least one outlier: green = 0, yellow = 1, orange = 2 and red = 3 or more. A red dot above a residue indicates a poor fit to the electron density ($RSRZ > 2$). Stretches of 2 or more consecutive residues without any outlier are shown as a green connector. Residues present in the sample, but not in the model, are shown in grey.

• Molecule 1: Transcobalamin-1



4 Data and refinement statistics

Property	Value	Source
Space group	P 64	Depositor
Cell constants a, b, c, α , β , γ	150.38 Å 150.38 Å 60.27 Å 90.00° 90.00° 120.00°	Depositor
Resolution (Å)	49.20 – 3.00 49.22 – 3.00	Depositor EDS
% Data completeness (in resolution range)	100.0 (49.20-3.00) 100.0 (49.22-3.00)	Depositor EDS
R_{merge}	0.06	Depositor
R_{sym}	0.06	Depositor
$\langle I/\sigma(I) \rangle$ ¹	1.84 (at 3.01 Å)	Xtriage
Refinement program	PHENIX (phenix.refine: 1.8.1_1168)	Depositor
R, R_{free}	0.204 , 0.252 0.204 , 0.249	Depositor DCC
R_{free} test set	795 reflections (5.02%)	wwPDB-VP
Wilson B-factor (Å ²)	105.7	Xtriage
Anisotropy	0.032	Xtriage
Bulk solvent k_{sol} (e/Å ³), B_{sol} (Å ²)	0.32 , 63.4	EDS
L-test for twinning ²	$\langle L \rangle = 0.49$, $\langle L^2 \rangle = 0.32$	Xtriage
Estimated twinning fraction	0.039 for h,-h-k,-l	Xtriage
F_o, F_c correlation	0.95	EDS
Total number of atoms	3301	wwPDB-VP
Average B, all atoms (Å ²)	88.0	wwPDB-VP

Xtriage's analysis on translational NCS is as follows: *The largest off-origin peak in the Patterson function is 3.87% of the height of the origin peak. No significant pseudotranslation is detected.*

¹Intensities estimated from amplitudes.

²Theoretical values of $\langle |L| \rangle$, $\langle L^2 \rangle$ for acentric reflections are 0.5, 0.333 respectively for untwinned datasets, and 0.375, 0.2 for perfectly twinned datasets.

5 Model quality

5.1 Standard geometry

Bond lengths and bond angles in the following residue types are not validated in this section: CBY, NAG, CYN

The Z score for a bond length (or angle) is the number of standard deviations the observed value is removed from the expected value. A bond length (or angle) with $|Z| > 5$ is considered an outlier worth inspection. RMSZ is the root-mean-square of all Z scores of the bond lengths (or angles).

Mol	Chain	Bond lengths		Bond angles	
		RMSZ	$\# Z > 5$	RMSZ	$\# Z > 5$
1	A	0.24	0/3166	0.41	0/4288

There are no bond length outliers.

There are no bond angle outliers.

There are no chirality outliers.

There are no planarity outliers.

5.2 Too-close contacts

In the following table, the Non-H and H(model) columns list the number of non-hydrogen atoms and hydrogen atoms in the chain respectively. The H(added) column lists the number of hydrogen atoms added and optimized by MolProbity. The Clashes column lists the number of clashes within the asymmetric unit, whereas Symm-Clashes lists symmetry related clashes.

Mol	Chain	Non-H	H(model)	H(added)	Clashes	Symm-Clashes
1	A	3116	0	3061	44	0
2	A	98	0	91	7	0
3	A	73	0	14	6	0
4	A	4	0	0	2	0
5	A	10	0	0	0	0
All	All	3301	0	3166	54	0

The all-atom clashscore is defined as the number of clashes found per 1000 atoms (including hydrogen atoms). The all-atom clashscore for this structure is 9.

All (54) close contacts within the same asymmetric unit are listed below, sorted by their clash magnitude.

Atom-1	Atom-2	Interatomic distance (Å)	Clash overlap (Å)
1:A:311:ILE:CD1	2:A:506:NAG:H83	1.77	1.14
1:A:311:ILE:HD13	2:A:506:NAG:H83	1.46	0.96
2:A:502:NAG:O3	2:A:502:NAG:O7	1.91	0.87
2:A:506:NAG:O7	2:A:506:NAG:O3	1.97	0.83
1:A:357:ARG:NH2	3:A:508[B]:CBY:O51	2.21	0.74
1:A:311:ILE:HD11	2:A:506:NAG:H83	1.73	0.68
1:A:328:THR:O	1:A:341:LYS:NZ	2.28	0.66
1:A:384:GLY:HA2	1:A:402:ASN:HB2	1.82	0.62
1:A:27:ARG:NH2	1:A:54:GLN:OE1	2.34	0.59
1:A:55:GLN:O	1:A:59:ASN:ND2	2.25	0.59
2:A:506:NAG:HO3	2:A:506:NAG:C7	2.07	0.59
1:A:109:ASN:ND2	1:A:116:THR:O	2.33	0.57
1:A:329:VAL:HG12	1:A:341:LYS:HD3	1.87	0.57
1:A:157:GLY:HA2	1:A:411:LEU:H	1.68	0.57
1:A:79:LEU:HB2	1:A:90:ILE:HD11	1.87	0.57
1:A:372:ASN:HB3	1:A:375:ASP:HB2	1.88	0.56
1:A:314:ASN:HB3	1:A:402:ASN:HA	1.88	0.56
1:A:357:ARG:O	1:A:359:TRP:N	2.39	0.55
1:A:179:LEU:HD21	1:A:186:ALA:HB3	1.89	0.53
1:A:63:ARG:HD2	1:A:66:ASP:HB2	1.89	0.52
1:A:81:VAL:HA	1:A:279:ILE:HG23	1.92	0.52
1:A:153:ASN:OD1	1:A:376:ARG:NH2	2.43	0.52
1:A:227:ALA:O	1:A:231:SER:OG	2.23	0.52
2:A:502:NAG:C7	2:A:502:NAG:HO3	2.11	0.51
1:A:353:THR:HB	1:A:365:CYS:HB2	1.91	0.51
1:A:90:ILE:HA	1:A:95:LEU:HD12	1.94	0.49
1:A:66:ASP:OD1	1:A:66:ASP:N	2.45	0.48
1:A:313:VAL:HG23	1:A:327:VAL:HG23	1.95	0.48
1:A:59:ASN:OD1	1:A:63:ARG:HG2	2.13	0.48
1:A:293:ASN:OD1	1:A:294:ILE:N	2.46	0.48
1:A:63:ARG:HG3	1:A:63:ARG:O	2.14	0.47
1:A:176:LYS:HG3	1:A:191:LEU:HD11	1.96	0.47
1:A:62:SER:C	1:A:64:LEU:H	2.18	0.47
1:A:340:GLU:O	1:A:344:LYS:HG2	2.15	0.46
3:A:508[B]:CBY:H49A	4:A:510:CYN:C	2.44	0.46
1:A:159:GLN:NE2	1:A:160:PHE:O	2.48	0.46
1:A:119:THR:OG1	1:A:120:ASN:N	2.49	0.44
1:A:249:VAL:HG11	1:A:271:LEU:HD21	2.00	0.43
1:A:325:THR:HG22	1:A:326:ASN:H	1.84	0.43
1:A:173:THR:O	1:A:177:LYS:HG3	2.19	0.42
1:A:260:ASN:HA	1:A:261:PRO:HD2	1.89	0.42
1:A:321:GLU:N	1:A:321:GLU:OE1	2.31	0.42

Continued on next page...

Continued from previous page...

Atom-1	Atom-2	Interatomic distance (Å)	Clash overlap (Å)
1:A:18:ASN:O	1:A:22:GLN:HG2	2.20	0.41
1:A:383:SER:HB2	1:A:388:LEU:HD21	2.02	0.41
1:A:39:LYS:NZ	1:A:84:ASN:HD21	2.18	0.41
1:A:267:VAL:O	1:A:271:LEU:HG	2.20	0.41
1:A:376:ARG:HD3	1:A:410:TYR:CD2	2.55	0.41

There are no symmetry-related clashes.

5.3 Torsion angles [i](#)

5.3.1 Protein backbone [i](#)

In the following table, the Percentiles column shows the percent Ramachandran outliers of the chain as a percentile score with respect to all X-ray entries followed by that with respect to entries of similar resolution.

The Analysed column shows the number of residues for which the backbone conformation was analysed, and the total number of residues.

Mol	Chain	Analysed	Favoured	Allowed	Outliers	Percentiles
1	A	394/467 (84%)	373 (95%)	19 (5%)	2 (0%)	29 68

All (2) Ramachandran outliers are listed below:

Mol	Chain	Res	Type
1	A	284	SER
1	A	358	SER

5.3.2 Protein sidechains [i](#)

In the following table, the Percentiles column shows the percent sidechain outliers of the chain as a percentile score with respect to all X-ray entries followed by that with respect to entries of similar resolution.

The Analysed column shows the number of residues for which the sidechain conformation was analysed, and the total number of residues.

Mol	Chain	Analysed	Rotameric	Outliers	Percentiles
1	A	350/414 (84%)	335 (96%)	15 (4%)	29 66

All (15) residues with a non-rotameric sidechain are listed below:

Mol	Chain	Res	Type
1	A	10	TYR
1	A	24	ASN
1	A	47	THR
1	A	54	GLN
1	A	61	LYS
1	A	66	ASP
1	A	86	GLU
1	A	148	THR
1	A	179	LEU
1	A	313	VAL
1	A	316	SER
1	A	324	PHE
1	A	327	VAL
1	A	376	ARG
1	A	410	TYR

Some sidechains can be flipped to improve hydrogen bonding and reduce clashes. All (1) such sidechains are listed below:

Mol	Chain	Res	Type
1	A	84	ASN

5.3.3 RNA [i](#)

There are no RNA molecules in this entry.

5.4 Non-standard residues in protein, DNA, RNA chains [i](#)

There are no non-standard protein/DNA/RNA residues in this entry.

5.5 Carbohydrates [i](#)

There are no monosaccharides in this entry.

5.6 Ligand geometry [i](#)

11 ligands are modelled in this entry.

In the following table, the Counts columns list the number of bonds (or angles) for which Mogul statistics could be retrieved, the number of bonds (or angles) that are observed in the model and

the number of bonds (or angles) that are defined in the Chemical Component Dictionary. The Link column lists molecule types, if any, to which the group is linked. The Z score for a bond length (or angle) is the number of standard deviations the observed value is removed from the expected value. A bond length (or angle) with $|Z| > 2$ is considered an outlier worth inspection. RMSZ is the root-mean-square of all Z scores of the bond lengths (or angles).

Mol	Type	Chain	Res	Link	Bond lengths			Bond angles		
					Counts	RMSZ	# Z > 2	Counts	RMSZ	# Z > 2
2	NAG	A	505	1	14,14,15	0.55	0	17,19,21	0.69	0
2	NAG	A	501	1	14,14,15	0.58	0	17,19,21	1.28	2 (11%)
4	CYN	A	510	3	0,1,1	0.00	-	-		
2	NAG	A	507	1	14,14,15	0.46	0	17,19,21	1.10	1 (5%)
2	NAG	A	503	1	14,14,15	0.48	0	17,19,21	0.76	0
2	NAG	A	504	1	14,14,15	0.59	0	17,19,21	0.65	0
4	CYN	A	509	3	0,1,1	0.00	-	-		
3	CBY	A	508[B]	-	56,75,75	0.99	3 (5%)	68,125,125	1.64	13 (19%)
2	NAG	A	506	1	14,14,15	0.33	0	17,19,21	0.70	0
3	CBY	A	508[A]	-	56,75,75	0.98	3 (5%)	68,125,125	1.66	13 (19%)
2	NAG	A	502	1	14,14,15	0.32	0	17,19,21	0.91	1 (5%)

In the following table, the Chirals column lists the number of chiral outliers, the number of chiral centers analysed, the number of these observed in the model and the number defined in the Chemical Component Dictionary. Similar counts are reported in the Torsion and Rings columns. '-' means no outliers of that kind were identified.

Mol	Type	Chain	Res	Link	Chirals	Torsions	Rings
2	NAG	A	505	1	-	1/6/23/26	0/1/1/1
2	NAG	A	501	1	-	5/6/23/26	0/1/1/1
2	NAG	A	507	1	-	2/6/23/26	0/1/1/1
2	NAG	A	503	1	-	5/6/23/26	0/1/1/1
2	NAG	A	504	1	-	2/6/23/26	0/1/1/1
3	CBY	A	508[B]	-	-	19/39/191/191	-
2	NAG	A	506	1	-	4/6/23/26	0/1/1/1
3	CBY	A	508[A]	-	-	18/39/191/191	-
2	NAG	A	502	1	-	6/6/23/26	0/1/1/1

All (6) bond length outliers are listed below:

Mol	Chain	Res	Type	Atoms	Z	Observed(Å)	Ideal(Å)
3	A	508[B]	CBY	C17-C18	2.73	1.58	1.54
3	A	508[A]	CBY	C17-C18	2.73	1.58	1.54
3	A	508[B]	CBY	C20-C1	2.63	1.58	1.53

Continued on next page...

Continued from previous page...

Mol	Chain	Res	Type	Atoms	Z	Observed(Å)	Ideal(Å)
3	A	508[A]	CBY	C20-C1	2.63	1.58	1.53
3	A	508[B]	CBY	C11-C10	-2.49	1.36	1.40
3	A	508[A]	CBY	C11-C10	-2.49	1.36	1.40

All (30) bond angle outliers are listed below:

Mol	Chain	Res	Type	Atoms	Z	Observed(°)	Ideal(°)
3	A	508[B]	CBY	C30-C3-C2	-5.54	107.39	119.13
3	A	508[A]	CBY	C30-C3-C2	-5.54	107.39	119.13
3	A	508[A]	CBY	C48-C13-C12	-4.02	105.40	116.59
3	A	508[B]	CBY	C16-C15-C14	-3.97	118.07	124.27
3	A	508[A]	CBY	C16-C15-C14	-3.97	118.07	124.27
3	A	508[B]	CBY	O34-C32-C31	-3.56	110.60	121.07
3	A	508[A]	CBY	O34-C32-C31	-3.56	110.60	121.07
3	A	508[B]	CBY	C48-C13-C12	-3.55	106.73	116.59
2	A	507	NAG	C1-O5-C5	3.26	116.61	112.19
2	A	501	NAG	O5-C1-C2	3.14	116.25	111.29
3	A	508[B]	CBY	C1-C19-N24	3.07	109.69	106.24
3	A	508[A]	CBY	C1-C19-N24	3.07	109.69	106.24
2	A	502	NAG	O5-C1-C2	-2.89	106.73	111.29
3	A	508[B]	CBY	C19-C1-N21	2.73	104.96	102.16
3	A	508[A]	CBY	C19-C1-N21	2.73	104.96	102.16
3	A	508[B]	CBY	C1-C19-C18	-2.71	117.44	121.93
3	A	508[A]	CBY	C1-C19-C18	-2.71	117.44	121.93
3	A	508[B]	CBY	C31-C32-N33	2.54	124.41	116.51
3	A	508[A]	CBY	C31-C32-N33	2.54	124.41	116.51
3	A	508[B]	CBY	C20-C1-C19	-2.44	107.00	109.36
3	A	508[A]	CBY	C20-C1-C19	-2.44	107.00	109.36
3	A	508[B]	CBY	C2-C3-C4	-2.29	99.28	101.67
3	A	508[A]	CBY	C2-C3-C4	-2.29	99.28	101.67
3	A	508[B]	CBY	C55-C17-C16	2.26	117.45	109.92
3	A	508[A]	CBY	C55-C17-C16	2.26	117.45	109.92
2	A	501	NAG	O5-C5-C6	2.21	110.67	107.20
3	A	508[B]	CBY	C13-C14-C15	-2.19	123.75	131.68
3	A	508[A]	CBY	C13-C14-C15	-2.19	123.75	131.68
3	A	508[B]	CBY	O63-C61-C60	2.14	125.38	120.87
3	A	508[A]	CBY	O63-C61-C60	2.14	125.38	120.87

There are no chirality outliers.

All (62) torsion outliers are listed below:

Mol	Chain	Res	Type	Atoms
2	A	501	NAG	C3-C2-N2-C7
2	A	501	NAG	C8-C7-N2-C2
2	A	501	NAG	O7-C7-N2-C2
2	A	503	NAG	O7-C7-N2-C2
3	A	508[B]	CBY	C72-C71-N59-C57
3	A	508[B]	CBY	C54-C17-C55-C56
3	A	508[B]	CBY	C18-C17-C55-C56
3	A	508[B]	CBY	C18-C60-C61-N62
3	A	508[B]	CBY	C18-C60-C61-O63
3	A	508[B]	CBY	C13-C48-C49-C50
3	A	508[B]	CBY	N59-C71-C72-C73
3	A	508[B]	CBY	N59-C71-C72-O8
2	A	506	NAG	C3-C2-N2-C7
3	A	508[A]	CBY	C72-C71-N59-C57
3	A	508[A]	CBY	C54-C17-C55-C56
3	A	508[A]	CBY	C18-C17-C55-C56
3	A	508[A]	CBY	C18-C60-C61-N62
3	A	508[A]	CBY	C18-C60-C61-O63
3	A	508[A]	CBY	N59-C71-C72-C73
3	A	508[A]	CBY	N59-C71-C72-O8
2	A	502	NAG	C1-C2-N2-C7
2	A	503	NAG	C8-C7-N2-C2
2	A	506	NAG	O5-C5-C6-O6
2	A	506	NAG	C4-C5-C6-O6
2	A	501	NAG	O5-C5-C6-O6
2	A	502	NAG	O5-C5-C6-O6
2	A	502	NAG	C8-C7-N2-C2
2	A	501	NAG	C4-C5-C6-O6
2	A	502	NAG	C4-C5-C6-O6
2	A	503	NAG	C1-C2-N2-C7
2	A	502	NAG	O7-C7-N2-C2
3	A	508[B]	CBY	C3-C30-C31-C32
3	A	508[A]	CBY	C3-C30-C31-C32
2	A	507	NAG	C8-C7-N2-C2
3	A	508[B]	CBY	C42-C41-C8-C7
3	A	508[A]	CBY	C42-C41-C8-C7
2	A	506	NAG	C1-C2-N2-C7
2	A	505	NAG	O5-C5-C6-O6
2	A	507	NAG	O7-C7-N2-C2
2	A	504	NAG	C4-C5-C6-O6
3	A	508[B]	CBY	C55-C56-C57-O58
3	A	508[A]	CBY	C55-C56-C57-O58
2	A	504	NAG	O5-C5-C6-O6

Continued on next page...

Continued from previous page...

Mol	Chain	Res	Type	Atoms
3	A	508[B]	CBY	C14-C13-C48-C49
3	A	508[B]	CBY	C42-C41-C8-C9
3	A	508[A]	CBY	C42-C41-C8-C9
3	A	508[B]	CBY	C55-C56-C57-N59
3	A	508[A]	CBY	C55-C56-C57-N59
2	A	503	NAG	C4-C5-C6-O6
3	A	508[B]	CBY	C16-C17-C55-C56
3	A	508[A]	CBY	C16-C17-C55-C56
3	A	508[B]	CBY	C17-C18-C60-C61
3	A	508[A]	CBY	C17-C18-C60-C61
2	A	503	NAG	O5-C5-C6-O6
2	A	502	NAG	C3-C2-N2-C7
3	A	508[B]	CBY	C19-C18-C60-C61
3	A	508[A]	CBY	C19-C18-C60-C61
3	A	508[A]	CBY	C13-C48-C49-C50
3	A	508[B]	CBY	C30-C31-C32-O34
3	A	508[A]	CBY	C30-C31-C32-O34
3	A	508[B]	CBY	C30-C31-C32-N33
3	A	508[A]	CBY	C30-C31-C32-N33

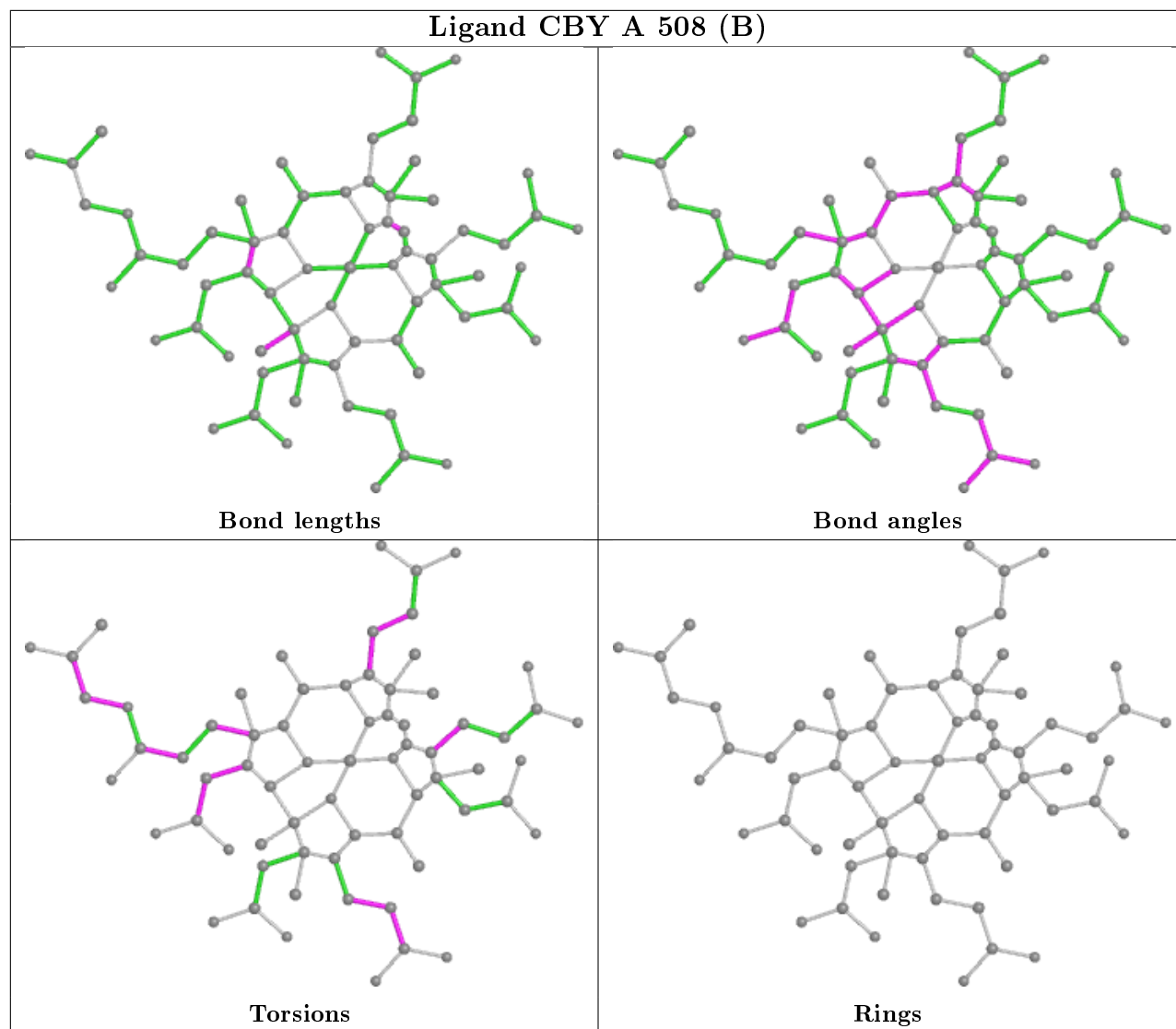
There are no ring outliers.

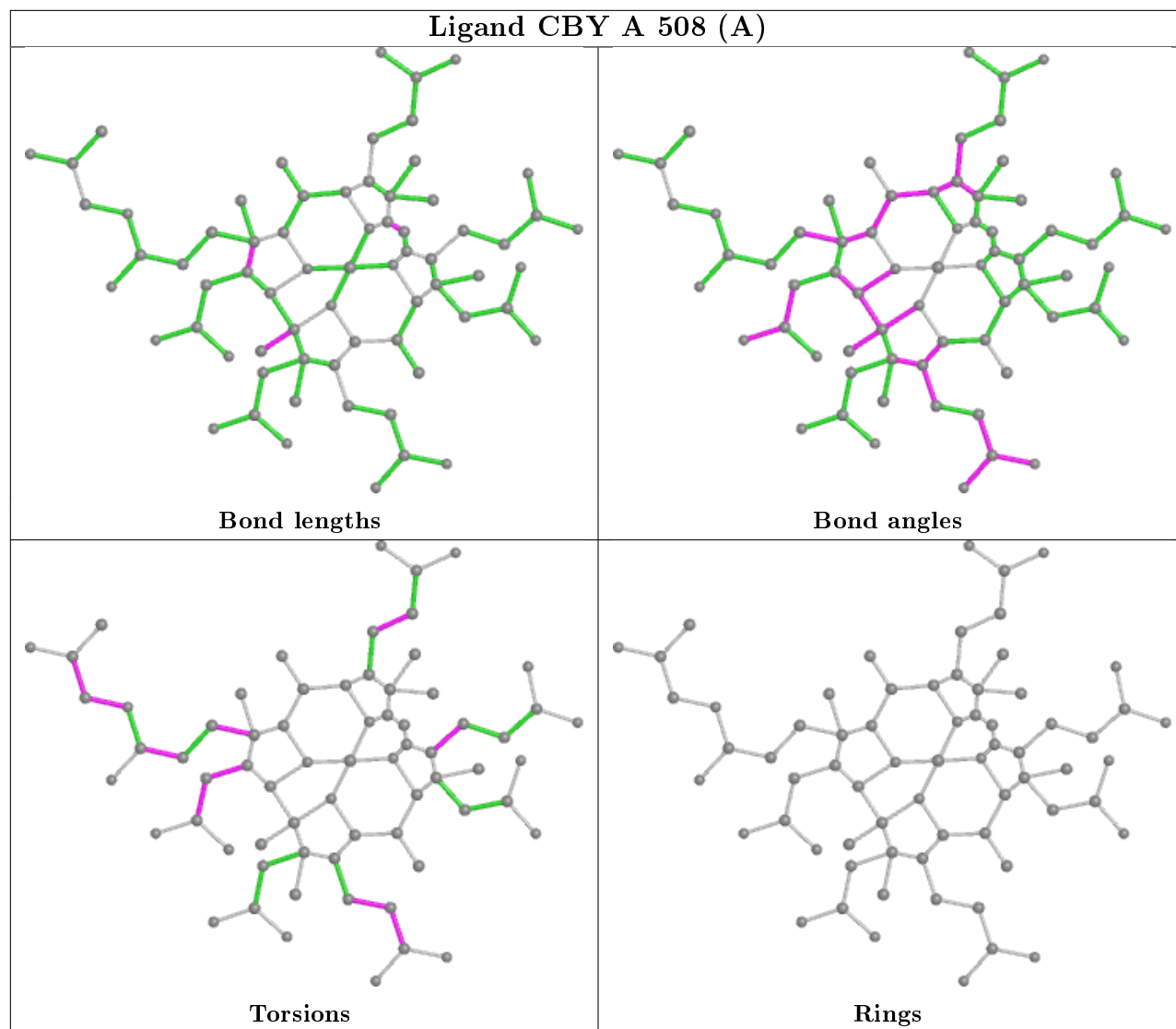
5 monomers are involved in 14 short contacts:

Mol	Chain	Res	Type	Clashes	Symm-Clashes
4	A	510	CYN	2	0
3	A	508[B]	CBY	4	0
2	A	506	NAG	5	0
3	A	508[A]	CBY	2	0
2	A	502	NAG	2	0

The following is a two-dimensional graphical depiction of Mogul quality analysis of bond lengths, bond angles, torsion angles, and ring geometry for all instances of the Ligand of Interest. In addition, ligands with molecular weight > 250 and outliers as shown on the validation Tables will also be included. For torsion angles, if less than 5% of the Mogul distribution of torsion angles is within 10 degrees of the torsion angle in question, then that torsion angle is considered an outlier. Any bond that is central to one or more torsion angles identified as an outlier by Mogul will be highlighted in the graph. For rings, the root-mean-square deviation (RMSD) between the ring in question and similar rings identified by Mogul is calculated over all ring torsion angles. If the average RMSD is greater than 60 degrees and the minimal RMSD between the ring in question and any Mogul-identified rings is also greater than 60 degrees, then that ring is considered an outlier. The outliers are highlighted in purple. The color gray indicates Mogul did not find sufficient equivalents in the CSD to analyse the geometry.

Ligand CBY A 508 (B)





5.7 Other polymers [i](#)

There are no such residues in this entry.

5.8 Polymer linkage issues [i](#)

There are no chain breaks in this entry.

6 Fit of model and data [i](#)

6.1 Protein, DNA and RNA chains [i](#)

In the following table, the column labelled ‘#RSRZ> 2’ contains the number (and percentage) of RSRZ outliers, followed by percent RSRZ outliers for the chain as percentile scores relative to all X-ray entries and entries of similar resolution. The OWAB column contains the minimum, median, 95th percentile and maximum values of the occupancy-weighted average B-factor per residue. The column labelled ‘Q< 0.9’ lists the number of (and percentage) of residues with an average occupancy less than 0.9.

Mol	Chain	Analysed	<RSRZ>	#RSRZ>2		OWAB(Å ²)	Q<0.9
1	A	398/467 (85%)	-0.23	3 (0%)	86 65	49, 83, 131, 180	0

All (3) RSRZ outliers are listed below:

Mol	Chain	Res	Type	RSRZ
1	A	329	VAL	2.6
1	A	309	SER	2.2
1	A	232	SER	2.1

6.2 Non-standard residues in protein, DNA, RNA chains [i](#)

There are no non-standard protein/DNA/RNA residues in this entry.

6.3 Carbohydrates [i](#)

There are no monosaccharides in this entry.

6.4 Ligands [i](#)

In the following table, the Atoms column lists the number of modelled atoms in the group and the number defined in the chemical component dictionary. The B-factors column lists the minimum, median, 95th percentile and maximum values of B factors of atoms in the group. The column labelled ‘Q< 0.9’ lists the number of atoms with occupancy less than 0.9.

Mol	Type	Chain	Res	Atoms	RSCC	RSR	B-factors(Å ²)	Q<0.9
2	NAG	A	506	14/15	0.75	0.43	130,145,149,149	0
2	NAG	A	502	14/15	0.77	0.37	124,138,145,147	0
2	NAG	A	505	14/15	0.78	0.42	116,125,134,135	0
2	NAG	A	507	14/15	0.88	0.44	86,139,145,145	0

Continued on next page...

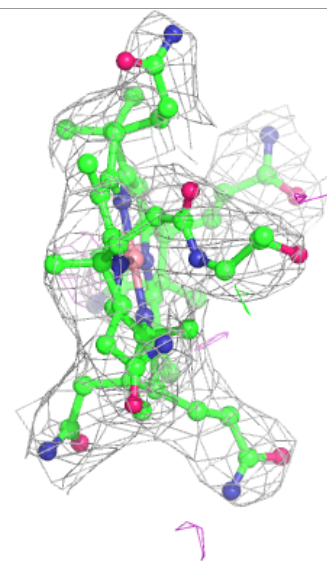
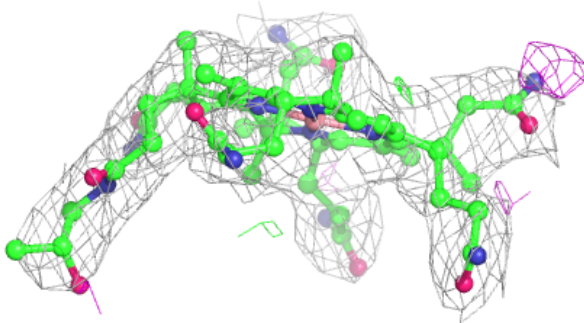
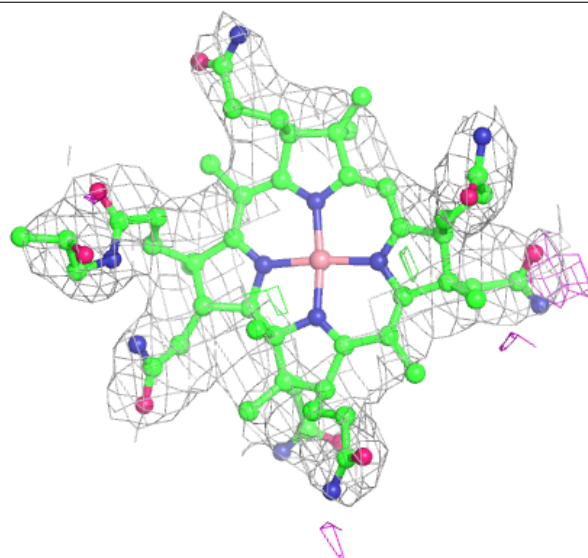
Continued from previous page...

Mol	Type	Chain	Res	Atoms	RSCC	RSR	B-factors(\AA^2)	Q<0.9
2	NAG	A	504	14/15	0.92	0.22	78,91,97,110	0
2	NAG	A	503	14/15	0.94	0.22	88,103,107,113	0
4	CYN	A	510	2/2	0.95	0.21	81,81,81,84	0
2	NAG	A	501	14/15	0.95	0.22	85,97,112,116	0
3	CBY	A	508[A]	68/68	0.96	0.24	39,70,95,118	5
3	CBY	A	508[B]	68/68	0.96	0.24	47,70,95,118	5
4	CYN	A	509	2/2	0.99	0.22	76,76,76,85	0

The following is a graphical depiction of the model fit to experimental electron density of all instances of the Ligand of Interest. In addition, ligands with molecular weight > 250 and outliers as shown on the geometry validation Tables will also be included. Each fit is shown from different orientation to approximate a three-dimensional view.

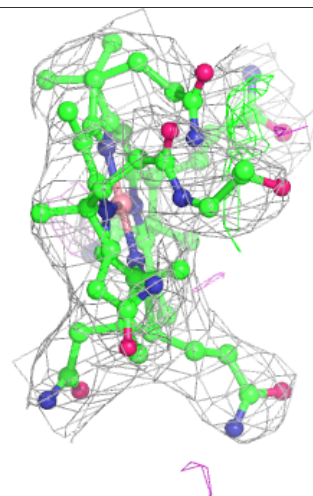
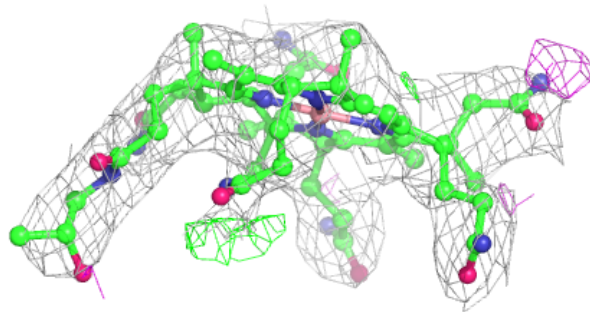
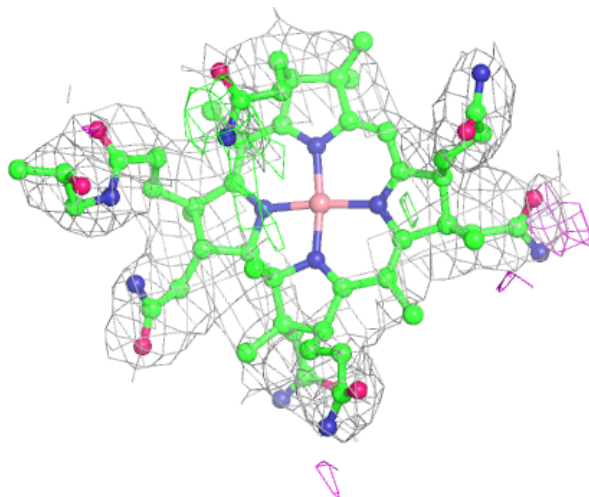
Electron density around CBY A 508 (A):

2mF_o-DF_c (at 0.7 rmsd) in gray
mF_o-DF_c (at 3 rmsd) in purple (negative)
and green (positive)



Electron density around CBY A 508 (B):

$2mF_o-DF_c$ (at 0.7 rmsd) in gray
 mF_o-DF_c (at 3 rmsd) in purple (negative)
and green (positive)



6.5 Other polymers ⓘ

There are no such residues in this entry.