



Full wwPDB X-ray Structure Validation Report ⓘ

Dec 28, 2020 – 02:35 PM EST

PDB ID : 7KK4
Title : Structure of the catalytic domain of PARP1 in complex with olaparib
Authors : Gajiwala, K.S.; Ryan, K.
Deposited on : 2020-10-27
Resolution : 1.96 Å(reported)

This is a Full wwPDB X-ray Structure Validation Report for a publicly released PDB entry.

We welcome your comments at validation@mail.wwpdb.org

A user guide is available at

<https://www.wwpdb.org/validation/2017/XrayValidationReportHelp>

with specific help available everywhere you see the ⓘ symbol.

The following versions of software and data (see [references ⓘ](#)) were used in the production of this report:

MolProbity : 4.02b-467
Mogul : 1.8.5 (274361), CSD as541be (2020)
Xtriage (Phenix) : 1.13
EDS : 2.16
buster-report : 1.1.7 (2018)
Percentile statistics : 20191225.v01 (using entries in the PDB archive December 25th 2019)
Refmac : 5.8.0158
CCP4 : 7.0.044 (Gargrove)
Ideal geometry (proteins) : Engh & Huber (2001)
Ideal geometry (DNA, RNA) : Parkinson et al. (1996)
Validation Pipeline (wwPDB-VP) : 2.16

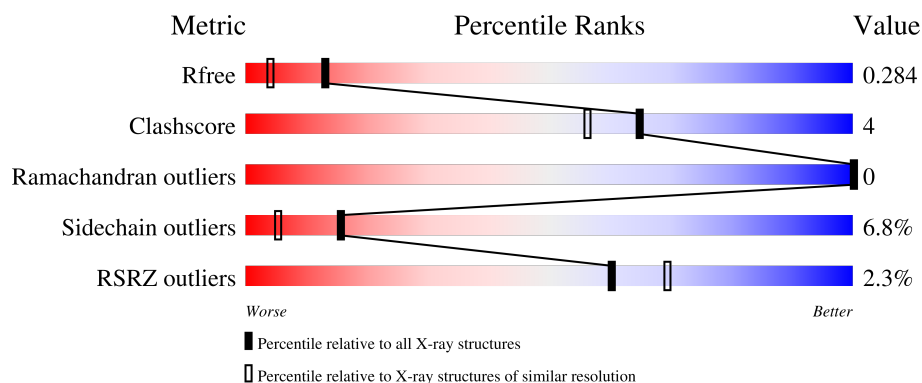
1 Overall quality at a glance

The following experimental techniques were used to determine the structure:

X-RAY DIFFRACTION



The reported resolution of this entry is 1.96 Å.

Percentile scores (ranging between 0-100) for global validation metrics of the entry are shown in the following graphic. The table shows the number of entries on which the scores are based.



Metric	Whole archive (#Entries)	Similar resolution (#Entries, resolution range(Å))
R_{free}	130704	2580 (1.96-1.96)
Clashscore	141614	2705 (1.96-1.96)
Ramachandran outliers	138981	2678 (1.96-1.96)
Sidechain outliers	138945	2678 (1.96-1.96)
RSRZ outliers	127900	2539 (1.96-1.96)

The table below summarises the geometric issues observed across the polymeric chains and their fit to the electron density. The red, orange, yellow and green segments of the lower bar indicate the fraction of residues that contain outliers for ≥ 3 , 2, 1 and 0 types of geometric quality criteria respectively. A grey segment represents the fraction of residues that are not modelled. The numeric value for each fraction is indicated below the corresponding segment, with a dot representing fractions $\leq 5\%$. The upper red bar (where present) indicates the fraction of residues that have poor fit to the electron density. The numeric value is given above the bar.

Mol	Chain	Length	Quality of chain
1	A	352	 3% 82% 13% ..
1	B	352	 2% 82% 14% ..

2 Entry composition [i](#)

There are 3 unique types of molecules in this entry. The entry contains 5601 atoms, of which 0 are hydrogens and 0 are deuteriums.

In the tables below, the ZeroOcc column contains the number of atoms modelled with zero occupancy, the AltConf column contains the number of residues with at least one atom in alternate conformation and the Trace column contains the number of residues modelled with at most 2 atoms.

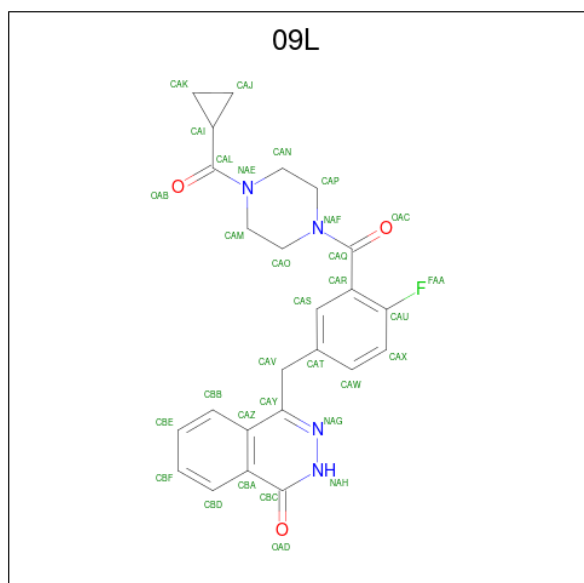
- Molecule 1 is a protein called Poly [ADP-ribose] polymerase 1.

Mol	Chain	Residues	Atoms					ZeroOcc	AltConf	Trace
1	A	340	Total	C	N	O	S	0	0	0
			2684	1713	453	508	10			
1	B	341	Total	C	N	O	S	0	0	0
			2693	1719	455	509	10			

There are 4 discrepancies between the modelled and reference sequences:

Chain	Residue	Modelled	Actual	Comment	Reference
A	660	GLY	-	expression tag	UNP P09874
A	661	SER	-	expression tag	UNP P09874
B	660	GLY	-	expression tag	UNP P09874
B	661	SER	-	expression tag	UNP P09874

- Molecule 2 is 4-(3-{[4-(cyclopropylcarbonyl)piperazin-1-yl]carbonyl}-4-fluorobenzyl)pht halazin-1(2H)-one (three-letter code: 09L) (formula: C₂₄H₂₃FN₄O₃) (labeled as "Ligand of Interest" by depositor).



Mol	Chain	Residues	Atoms					ZeroOcc	AltConf
2	A	1	Total	C	F	N	O	0	0
			32	24	1	4	3		
2	B	1	Total	C	F	N	O	0	0
			32	24	1	4	3		

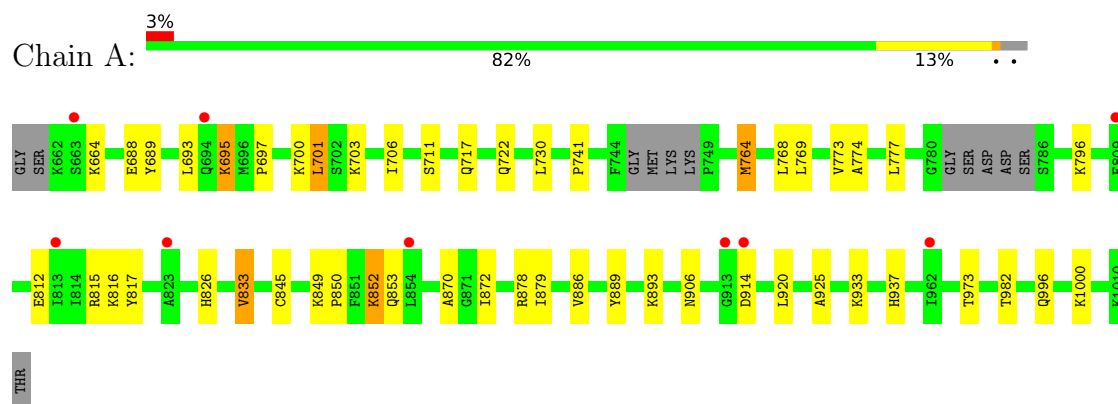
- Molecule 3 is water.

Mol	Chain	Residues	Atoms		ZeroOcc	AltConf
3	A	83	Total	O	0	0
			83	83		
3	B	77	Total	O	0	0
			77	77		

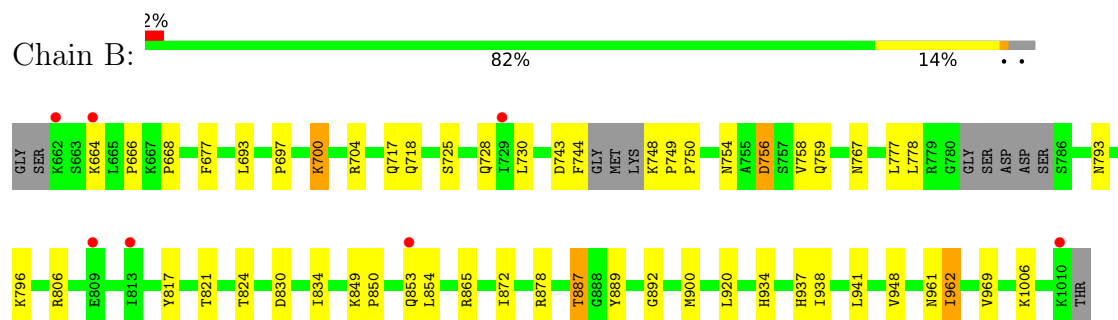
3 Residue-property plots [i](#)

These plots are drawn for all protein, RNA, DNA and oligosaccharide chains in the entry. The first graphic for a chain summarises the proportions of the various outlier classes displayed in the second graphic. The second graphic shows the sequence view annotated by issues in geometry and electron density. Residues are color-coded according to the number of geometric quality criteria for which they contain at least one outlier: green = 0, yellow = 1, orange = 2 and red = 3 or more. A red dot above a residue indicates a poor fit to the electron density ($RSRZ > 2$). Stretches of 2 or more consecutive residues without any outlier are shown as a green connector. Residues present in the sample, but not in the model, are shown in grey.

- Molecule 1: Poly [ADP-ribose] polymerase 1



- Molecule 1: Poly [ADP-ribose] polymerase 1



4 Data and refinement statistics

Property	Value	Source
Space group	C 1 2 1	Depositor
Cell constants a, b, c, α , β , γ	172.76Å 44.53Å 111.93Å 90.00° 127.42° 90.00°	Depositor
Resolution (Å)	55.89 – 1.96 55.89 – 1.96	Depositor EDS
% Data completeness (in resolution range)	68.0 (55.89-1.96) 68.0 (55.89-1.96)	Depositor EDS
R_{merge}	(Not available)	Depositor
R_{sym}	(Not available)	Depositor
$\langle I/\sigma(I) \rangle$ ¹	1.50 (at 1.97Å)	Xtriage
Refinement program	BUSTER 2.11.7	Depositor
R, R_{free}	0.217 , 0.266 0.226 , 0.284	Depositor DCC
R_{free} test set	1499 reflections (4.50%)	wwPDB-VP
Wilson B-factor (Å ²)	45.7	Xtriage
Anisotropy	0.060	Xtriage
Bulk solvent k_{sol} (e/Å ³), B_{sol} (Å ²)	0.34 , 49.9	EDS
L-test for twinning ²	$\langle L \rangle = 0.49$, $\langle L^2 \rangle = 0.32$	Xtriage
Estimated twinning fraction	0.013 for -h-2*k,l	Xtriage
F_o, F_c correlation	0.95	EDS
Total number of atoms	5601	wwPDB-VP
Average B, all atoms (Å ²)	52.0	wwPDB-VP

Xtriage's analysis on translational NCS is as follows: *The largest off-origin peak in the Patterson function is 5.72% of the height of the origin peak. No significant pseudotranslation is detected.*

¹Intensities estimated from amplitudes.

²Theoretical values of $\langle |L| \rangle$, $\langle L^2 \rangle$ for acentric reflections are 0.5, 0.333 respectively for untwinned datasets, and 0.375, 0.2 for perfectly twinned datasets.

5 Model quality

5.1 Standard geometry

Bond lengths and bond angles in the following residue types are not validated in this section: 09L

The Z score for a bond length (or angle) is the number of standard deviations the observed value is removed from the expected value. A bond length (or angle) with $|Z| > 5$ is considered an outlier worth inspection. RMSZ is the root-mean-square of all Z scores of the bond lengths (or angles).

Mol	Chain	Bond lengths		Bond angles	
		RMSZ	$\# Z > 5$	RMSZ	$\# Z > 5$
1	A	0.51	0/2734	0.72	0/3689
1	B	0.51	0/2743	0.71	0/3701
All	All	0.51	0/5477	0.72	0/7390

There are no bond length outliers.

There are no bond angle outliers.

There are no chirality outliers.

There are no planarity outliers.

5.2 Too-close contacts

In the following table, the Non-H and H(model) columns list the number of non-hydrogen atoms and hydrogen atoms in the chain respectively. The H(added) column lists the number of hydrogen atoms added and optimized by MolProbity. The Clashes column lists the number of clashes within the asymmetric unit, whereas Symm-Clashes lists symmetry-related clashes.

Mol	Chain	Non-H	H(model)	H(added)	Clashes	Symm-Clashes
1	A	2684	0	2728	21	0
1	B	2693	0	2740	23	0
2	A	32	0	23	2	0
2	B	32	0	23	2	0
3	A	83	0	0	0	0
3	B	77	0	0	0	0
All	All	5601	0	5514	45	0

The all-atom clashscore is defined as the number of clashes found per 1000 atoms (including hydrogen atoms). The all-atom clashscore for this structure is 4.

All (45) close contacts within the same asymmetric unit are listed below, sorted by their clash

magnitude.

Atom-1	Atom-2	Interatomic distance (Å)	Clash overlap (Å)
1:B:717:GLN:HG2	1:B:887:THR:HG21	1.23	1.15
1:B:717:GLN:HG2	1:B:887:THR:CG2	2.05	0.86
1:B:717:GLN:CG	1:B:887:THR:HG21	2.11	0.75
1:B:725:SER:H	1:B:728:GLN:HE21	1.41	0.68
1:A:689:TYR:HB3	1:A:764:MET:HG3	1.80	0.64
1:B:777:LEU:HD22	1:B:796:LYS:HB3	1.81	0.62
1:A:697:PRO:HD2	1:A:700:LYS:HB2	1.83	0.61
1:A:872:ILE:HG21	1:A:920:LEU:HD11	1.82	0.61
1:B:834:ILE:HD11	1:B:1006:LYS:HB2	1.85	0.59
1:B:872:ILE:HG21	1:B:920:LEU:HD11	1.85	0.58
1:A:764:MET:HE3	1:A:768:LEU:HG	1.87	0.56
1:A:815:ARG:HG2	1:A:833:VAL:HG21	1.88	0.56
1:B:743:ASP:HA	1:B:744:PHE:C	2.27	0.55
1:A:695:LYS:HE2	1:A:741:PRO:HB3	1.90	0.54
1:B:821:THR:HB	1:B:900:MET:HA	1.88	0.54
1:A:886:VAL:CG2	1:B:934:HIS:CD2	2.92	0.53
1:B:754:ASN:HD21	1:B:756:ASP:HB2	1.76	0.50
1:A:925:ALA:HB3	1:A:996:GLN:HG2	1.92	0.50
1:A:774:ALA:HB2	1:A:870:ALA:HB3	1.95	0.48
1:B:941:LEU:HD21	1:B:948:VAL:HG23	1.95	0.48
1:A:701:LEU:HD11	1:A:768:LEU:HD22	1.96	0.47
1:B:793:ASN:HA	1:B:796:LYS:HD2	1.97	0.47
1:B:889:TYR:O	1:B:937:HIS:HD2	1.97	0.47
1:B:767:ASN:ND2	1:B:865:ARG:HD2	2.30	0.46
2:A:9001:09L:H5	2:A:9001:09L:H10	1.70	0.46
1:B:878:ARG:O	2:B:9001:09L:H7	2.15	0.46
1:A:701:LEU:HD21	1:A:768:LEU:HD13	1.98	0.46
1:B:697:PRO:HD2	1:B:700:LYS:HG3	1.97	0.45
1:A:933:LYS:HG2	1:A:982:THR:HB	1.98	0.45
1:B:849:LYS:HB3	1:B:850:PRO:HD3	1.99	0.45
2:B:9001:09L:H10	2:B:9001:09L:H5	1.69	0.44
1:A:889:TYR:O	1:A:937:HIS:HD2	2.00	0.44
1:A:777:LEU:HD22	1:A:796:LYS:HB3	1.99	0.44
1:A:849:LYS:HB3	1:A:850:PRO:HD3	2.00	0.44
1:B:962:ILE:HG22	1:B:969:VAL:HB	2.00	0.44
1:A:878:ARG:O	2:A:9001:09L:H7	2.18	0.43
1:B:666:PRO:HB2	1:B:668:PRO:HD2	2.00	0.43
1:A:701:LEU:HD22	1:A:706:ILE:HD11	2.01	0.42
1:A:849:LYS:O	1:A:852:LYS:HB2	2.19	0.42
1:A:826:HIS:CD2	1:A:906:ASN:HD21	2.38	0.42
1:B:892:GLY:HA3	1:B:938:ILE:O	2.19	0.41

Continued on next page...

Continued from previous page...

Atom-1	Atom-2	Interatomic distance (Å)	Clash overlap (Å)
1:A:769:LEU:O	1:A:773:VAL:HG23	2.20	0.41
1:B:749:PRO:HA	1:B:750:PRO:HD2	2.02	0.41
1:B:677:PHE:CD1	1:B:778:LEU:HD13	2.57	0.40
1:A:886:VAL:HG12	1:A:893:LYS:HE2	2.03	0.40

There are no symmetry-related clashes.

5.3 Torsion angles [i](#)

5.3.1 Protein backbone [i](#)

In the following table, the Percentiles column shows the percent Ramachandran outliers of the chain as a percentile score with respect to all X-ray entries followed by that with respect to entries of similar resolution.

The Analysed column shows the number of residues for which the backbone conformation was analysed, and the total number of residues.

Mol	Chain	Analysed	Favoured	Allowed	Outliers	Percentiles	
1	A	334/352 (95%)	320 (96%)	14 (4%)	0	100	100
1	B	335/352 (95%)	327 (98%)	8 (2%)	0	100	100
All	All	669/704 (95%)	647 (97%)	22 (3%)	0	100	100

There are no Ramachandran outliers to report.

5.3.2 Protein sidechains [i](#)

In the following table, the Percentiles column shows the percent sidechain outliers of the chain as a percentile score with respect to all X-ray entries followed by that with respect to entries of similar resolution.

The Analysed column shows the number of residues for which the sidechain conformation was analysed, and the total number of residues.

Mol	Chain	Analysed	Rotameric	Outliers	Percentiles	
1	A	300/309 (97%)	278 (93%)	22 (7%)	14	4
1	B	301/309 (97%)	282 (94%)	19 (6%)	18	7
All	All	601/618 (97%)	560 (93%)	41 (7%)	16	5

All (41) residues with a non-rotameric sidechain are listed below:

Mol	Chain	Res	Type
1	A	664	LYS
1	A	688	GLU
1	A	693	LEU
1	A	695	LYS
1	A	701	LEU
1	A	703	LYS
1	A	711	SER
1	A	717	GLN
1	A	722	GLN
1	A	730	LEU
1	A	764	MET
1	A	812	GLU
1	A	816	LYS
1	A	817	TYR
1	A	833	VAL
1	A	845	CYS
1	A	852	LYS
1	A	853	GLN
1	A	879	ILE
1	A	914	ASP
1	A	973	THR
1	A	1000	LYS
1	B	664	LYS
1	B	693	LEU
1	B	700	LYS
1	B	704	ARG
1	B	718	GLN
1	B	730	LEU
1	B	748	LYS
1	B	756	ASP
1	B	758	VAL
1	B	759	GLN
1	B	806	ARG
1	B	817	TYR
1	B	824	THR
1	B	830	ASP
1	B	853	GLN
1	B	854	LEU
1	B	887	THR
1	B	961	ASN
1	B	962	ILE

Sometimes sidechains can be flipped to improve hydrogen bonding and reduce clashes. All (14) such sidechains are listed below:

Mol	Chain	Res	Type
1	A	670	GLN
1	A	868	ASN
1	A	937	HIS
1	A	961	ASN
1	A	987	ASN
1	B	705	GLN
1	B	722	GLN
1	B	728	GLN
1	B	734	ASN
1	B	754	ASN
1	B	767	ASN
1	B	868	ASN
1	B	937	HIS
1	B	961	ASN

5.3.3 RNA [i](#)

There are no RNA molecules in this entry.

5.4 Non-standard residues in protein, DNA, RNA chains [i](#)

There are no non-standard protein/DNA/RNA residues in this entry.

5.5 Carbohydrates [i](#)

There are no monosaccharides in this entry.

5.6 Ligand geometry [i](#)

2 ligands are modelled in this entry.

In the following table, the Counts columns list the number of bonds (or angles) for which Mogul statistics could be retrieved, the number of bonds (or angles) that are observed in the model and the number of bonds (or angles) that are defined in the Chemical Component Dictionary. The Link column lists molecule types, if any, to which the group is linked. The Z score for a bond length (or angle) is the number of standard deviations the observed value is removed from the expected value. A bond length (or angle) with $|Z| > 2$ is considered an outlier worth inspection. RMSZ is the root-mean-square of all Z scores of the bond lengths (or angles).

Mol	Type	Chain	Res	Link	Bond lengths			Bond angles		
					Counts	RMSZ	# Z > 2	Counts	RMSZ	# Z > 2
2	09L	A	9001	-	35,36,36	1.04	2 (5%)	44,52,52	1.49	2 (4%)
2	09L	B	9001	-	35,36,36	1.04	3 (8%)	44,52,52	1.39	1 (2%)

In the following table, the Chirals column lists the number of chiral outliers, the number of chiral centers analysed, the number of these observed in the model and the number defined in the Chemical Component Dictionary. Similar counts are reported in the Torsion and Rings columns. '-' means no outliers of that kind were identified.

Mol	Type	Chain	Res	Link	Chirals	Torsions	Rings
2	09L	A	9001	-	-	0/20/32/32	0/5/5/5
2	09L	B	9001	-	-	0/20/32/32	0/5/5/5

All (5) bond length outliers are listed below:

Mol	Chain	Res	Type	Atoms	Z	Observed(Å)	Ideal(Å)
2	A	9001	09L	CAY-CAZ	4.56	1.48	1.43
2	B	9001	09L	CAY-CAZ	4.38	1.48	1.43
2	A	9001	09L	CAY-NAG	-2.56	1.29	1.32
2	B	9001	09L	CAY-NAG	-2.40	1.29	1.32
2	B	9001	09L	NAH-NAG	2.26	1.40	1.34

All (3) bond angle outliers are listed below:

Mol	Chain	Res	Type	Atoms	Z	Observed(°)	Ideal(°)
2	A	9001	09L	CBC-NAH-NAG	8.71	127.33	119.32
2	B	9001	09L	CBC-NAH-NAG	8.29	126.93	119.32
2	A	9001	09L	CAN-NAE-CAM	-2.06	108.67	112.62

There are no chirality outliers.

There are no torsion outliers.

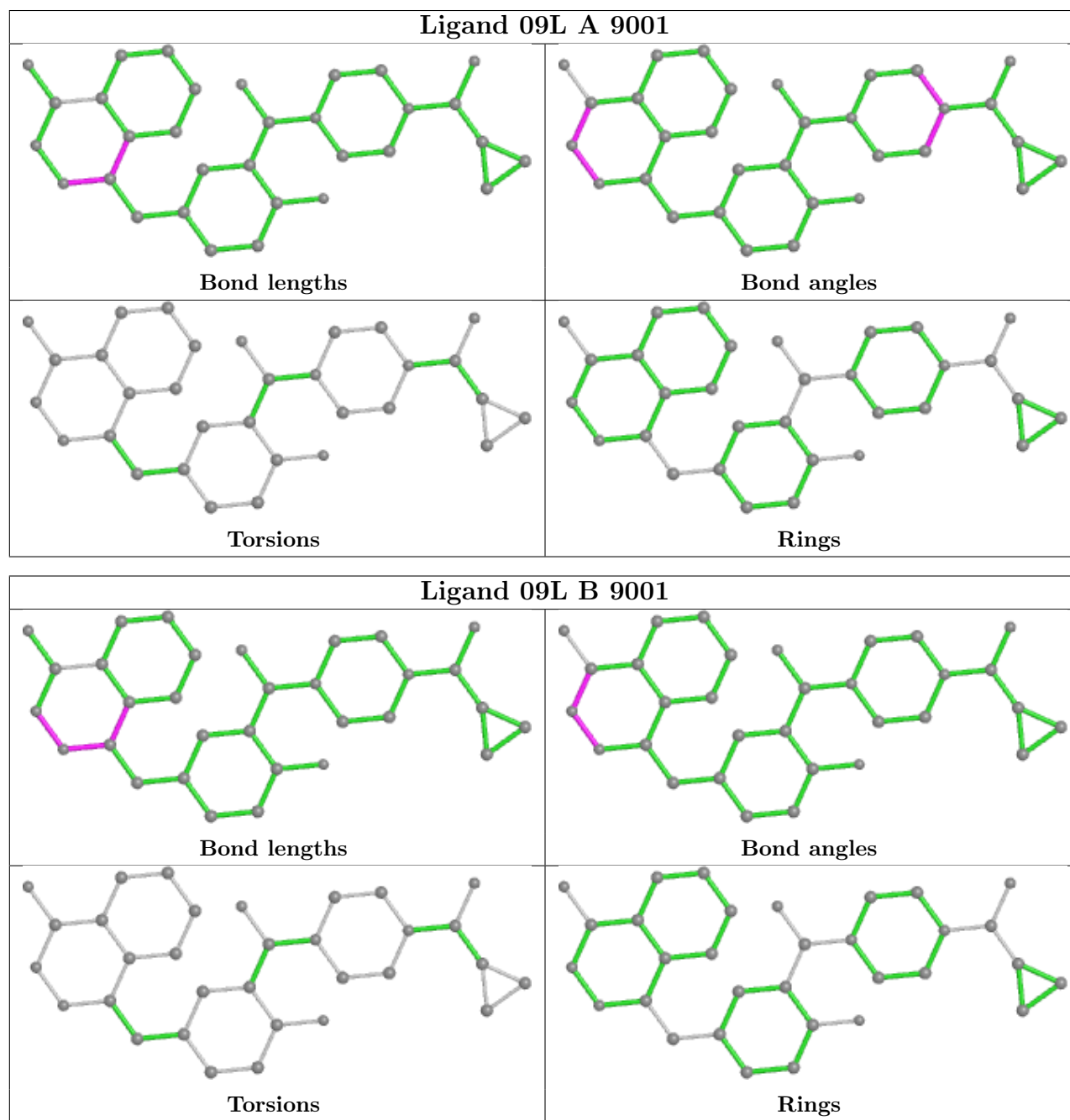
There are no ring outliers.

2 monomers are involved in 4 short contacts:

Mol	Chain	Res	Type	Clashes	Symm-Clashes
2	A	9001	09L	2	0
2	B	9001	09L	2	0

The following is a two-dimensional graphical depiction of Mogul quality analysis of bond lengths, bond angles, torsion angles, and ring geometry for all instances of the Ligand of Interest. In addition, ligands with molecular weight > 250 and outliers as shown on the validation Tables will

also be included. For torsion angles, if less than 5% of the Mogul distribution of torsion angles is within 10 degrees of the torsion angle in question, then that torsion angle is considered an outlier. Any bond that is central to one or more torsion angles identified as an outlier by Mogul will be highlighted in the graph. For rings, the root-mean-square deviation (RMSD) between the ring in question and similar rings identified by Mogul is calculated over all ring torsion angles. If the average RMSD is greater than 60 degrees and the minimal RMSD between the ring in question and any Mogul-identified rings is also greater than 60 degrees, then that ring is considered an outlier. The outliers are highlighted in purple. The color gray indicates Mogul did not find sufficient equivalents in the CSD to analyse the geometry.



5.7 Other polymers

There are no such residues in this entry.

5.8 Polymer linkage issues

There are no chain breaks in this entry.

6 Fit of model and data [i](#)

6.1 Protein, DNA and RNA chains [i](#)

In the following table, the column labelled ‘#RSRZ> 2’ contains the number (and percentage) of RSRZ outliers, followed by percent RSRZ outliers for the chain as percentile scores relative to all X-ray entries and entries of similar resolution. The OWAB column contains the minimum, median, 95th percentile and maximum values of the occupancy-weighted average B-factor per residue. The column labelled ‘Q< 0.9’ lists the number of (and percentage) of residues with an average occupancy less than 0.9.

Mol	Chain	Analysed	<RSRZ>	#RSRZ>2	OWAB(Å ²)	Q<0.9
1	A	340/352 (96%)	0.23	9 (2%) 56 65	29, 52, 78, 98	0
1	B	341/352 (96%)	0.05	7 (2%) 63 72	30, 50, 75, 97	0
All	All	681/704 (96%)	0.14	16 (2%) 60 69	29, 51, 76, 98	0

All (16) RSRZ outliers are listed below:

Mol	Chain	Res	Type	RSRZ
1	A	913	GLY	4.5
1	B	664	LYS	3.3
1	A	813	ILE	3.0
1	B	729	ILE	2.7
1	A	694	GLN	2.5
1	B	853	GLN	2.4
1	A	663	SER	2.4
1	B	1010	LYS	2.4
1	B	809	GLU	2.3
1	A	823	ALA	2.3
1	A	914	ASP	2.3
1	A	854	LEU	2.3
1	A	962	ILE	2.2
1	A	809	GLU	2.1
1	B	813	ILE	2.1
1	B	662	LYS	2.1

6.2 Non-standard residues in protein, DNA, RNA chains [i](#)

There are no non-standard protein/DNA/RNA residues in this entry.

6.3 Carbohydrates [i](#)

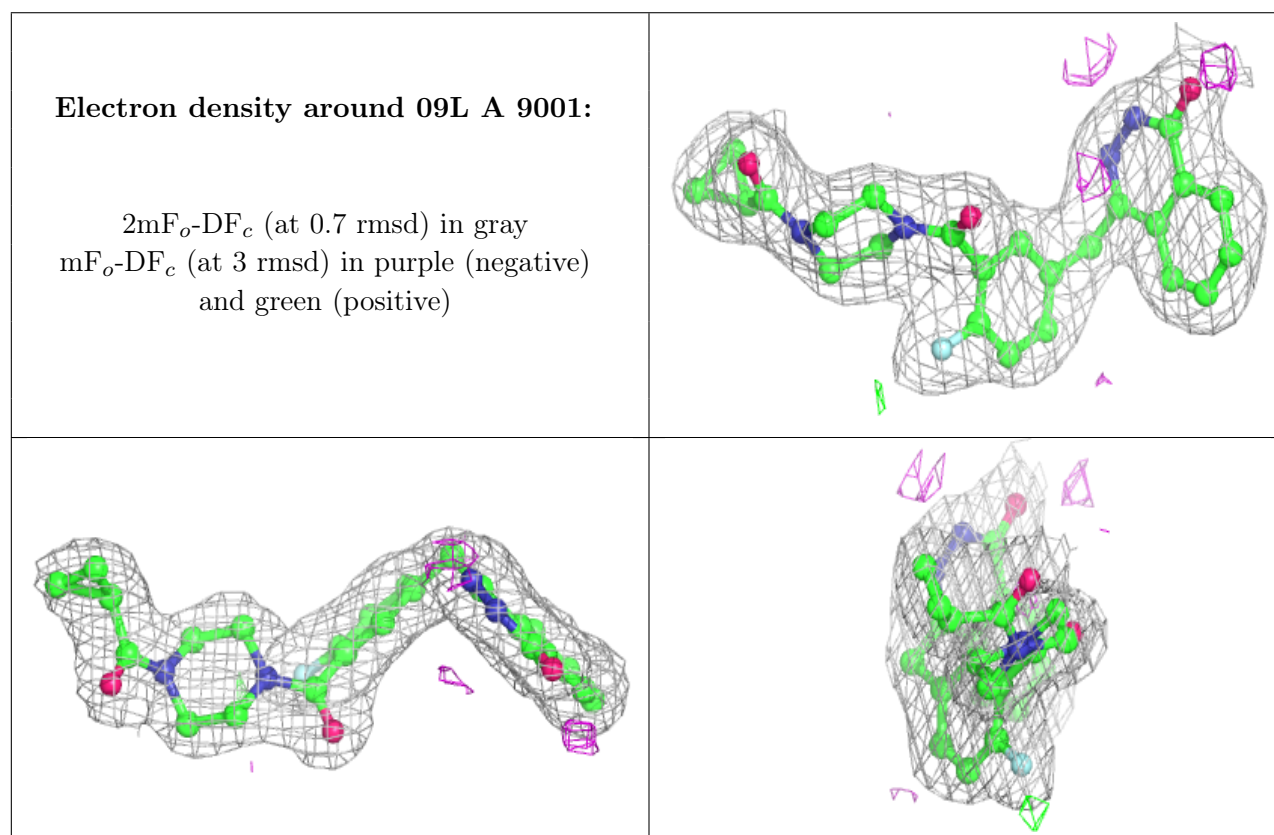
There are no monosaccharides in this entry.

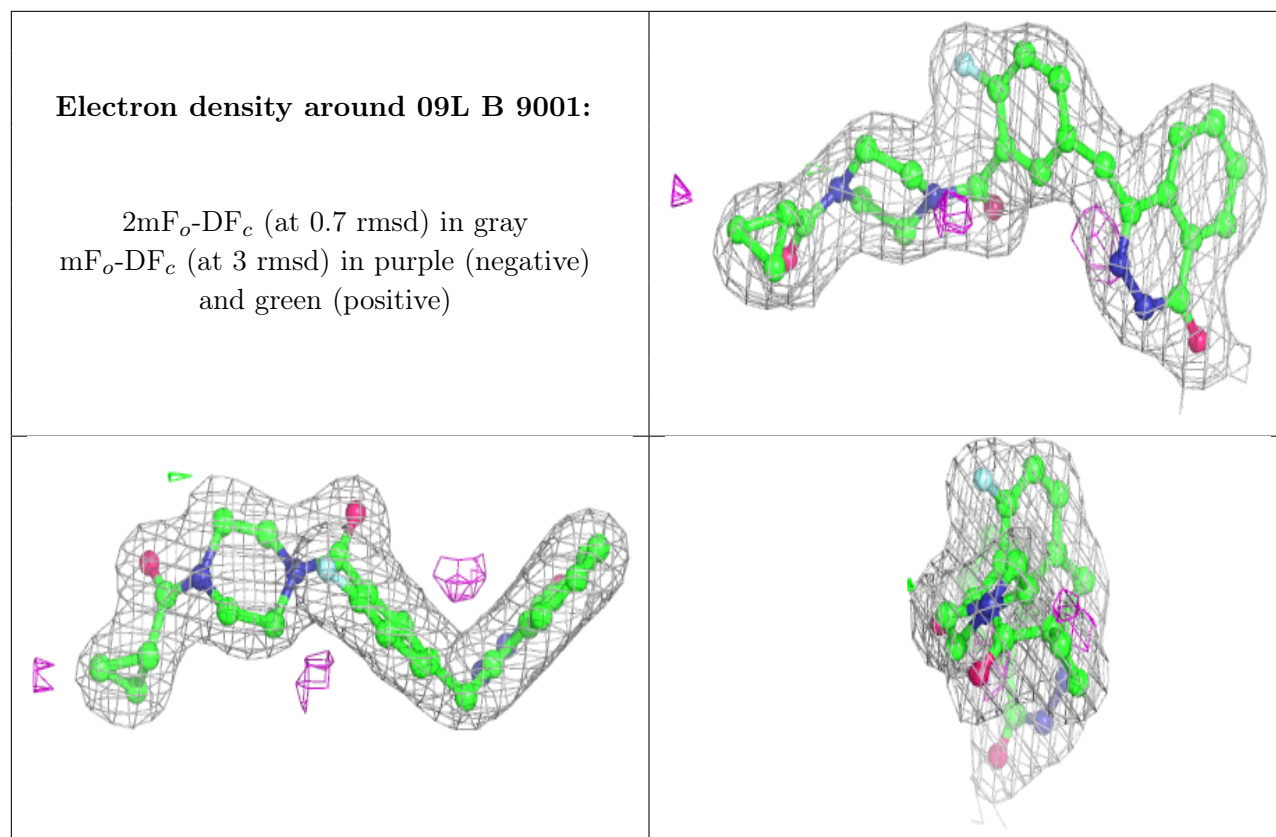
6.4 Ligands [i](#)

In the following table, the Atoms column lists the number of modelled atoms in the group and the number defined in the chemical component dictionary. The B-factors column lists the minimum, median, 95th percentile and maximum values of B factors of atoms in the group. The column labelled 'Q < 0.9' lists the number of atoms with occupancy less than 0.9.

Mol	Type	Chain	Res	Atoms	RSCC	RSR	B-factors(\AA^2)	Q<0.9
2	09L	A	9001	32/32	0.95	0.09	28,32,36,36	0
2	09L	B	9001	32/32	0.97	0.09	28,34,38,39	0

The following is a graphical depiction of the model fit to experimental electron density of all instances of the Ligand of Interest. In addition, ligands with molecular weight > 250 and outliers as shown on the geometry validation Tables will also be included. Each fit is shown from different orientation to approximate a three-dimensional view.





6.5 Other polymers [i](#)

There are no such residues in this entry.