



# Full wwPDB X-ray Structure Validation Report ⓘ

May 22, 2020 – 02:58 pm BST

PDB ID : 3KLM  
Title : 17beta-HSD1 in complex with DHT  
Authors : Mazumdar, M.  
Deposited on : 2009-11-08  
Resolution : 1.70 Å(reported)

This is a Full wwPDB X-ray Structure Validation Report for a publicly released PDB entry.

We welcome your comments at [validation@mail.wwpdb.org](mailto:validation@mail.wwpdb.org)

A user guide is available at

<https://www.wwpdb.org/validation/2017/XrayValidationReportHelp>

with specific help available everywhere you see the ⓘ symbol.

---

The following versions of software and data (see [references ⓘ](#)) were used in the production of this report:

MolProbity : 4.02b-467  
Mogul : 1.8.5 (274361), CSD as541be (2020)  
Xtriage (Phenix) : 1.13  
EDS : 2.11  
buster-report : 1.1.7 (2018)  
Percentile statistics : 20191225.v01 (using entries in the PDB archive December 25th 2019)  
Refmac : 5.8.0158  
CCP4 : 7.0.044 (Gargrove)  
Ideal geometry (proteins) : Engh & Huber (2001)  
Ideal geometry (DNA, RNA) : Parkinson et al. (1996)  
Validation Pipeline (wwPDB-VP) : 2.11

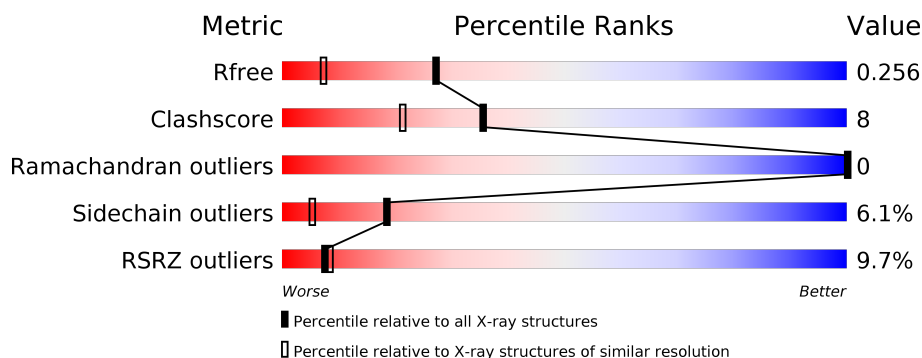
# 1 Overall quality at a glance

The following experimental techniques were used to determine the structure:

## *X-RAY DIFFRACTION*

The reported resolution of this entry is 1.70 Å.

Percentile scores (ranging between 0-100) for global validation metrics of the entry are shown in the following graphic. The table shows the number of entries on which the scores are based.



Metric	Whole archive (#Entries)	Similar resolution (#Entries, resolution range(Å))
$R_{free}$	130704	4298 (1.70-1.70)
Clashscore	141614	4695 (1.70-1.70)
Ramachandran outliers	138981	4610 (1.70-1.70)
Sidechain outliers	138945	4610 (1.70-1.70)
RSRZ outliers	127900	4222 (1.70-1.70)

The table below summarises the geometric issues observed across the polymeric chains and their fit to the electron density. The red, orange, yellow and green segments on the lower bar indicate the fraction of residues that contain outliers for  $\geq 3$ , 2, 1 and 0 types of geometric quality criteria respectively. A grey segment represents the fraction of residues that are not modelled. The numeric value for each fraction is indicated below the corresponding segment, with a dot representing fractions  $\leq 5\%$ . The upper red bar (where present) indicates the fraction of residues that have poor fit to the electron density. The numeric value is given above the bar.

Mol	Chain	Length	Quality of chain
1	X	327	<div> <div>8%</div> <div>71%</div> <div>13%</div> <div>15%</div> </div>

The following table lists non-polymeric compounds, carbohydrate monomers and non-standard residues in protein, DNA, RNA chains that are outliers for geometric or electron-density-fit criteria:

Mol	Type	Chain	Res	Chirality	Geometry	Clashes	Electron density
2	DHT	X	732[A]	-	-	-	X
2	DHT	X	732[B]	-	-	-	X

*Continued on next page...*

*Continued from previous page...*

Mol	Type	Chain	Res	Chirality	Geometry	Clashes	Electron density
3	GOL	X	328	-	-	X	-

## 2 Entry composition [i](#)

There are 4 unique types of molecules in this entry. The entry contains 2237 atoms, of which 0 are hydrogens and 0 are deuteriums.

In the tables below, the ZeroOcc column contains the number of atoms modelled with zero occupancy, the AltConf column contains the number of residues with at least one atom in alternate conformation and the Trace column contains the number of residues modelled with at most 2 atoms.

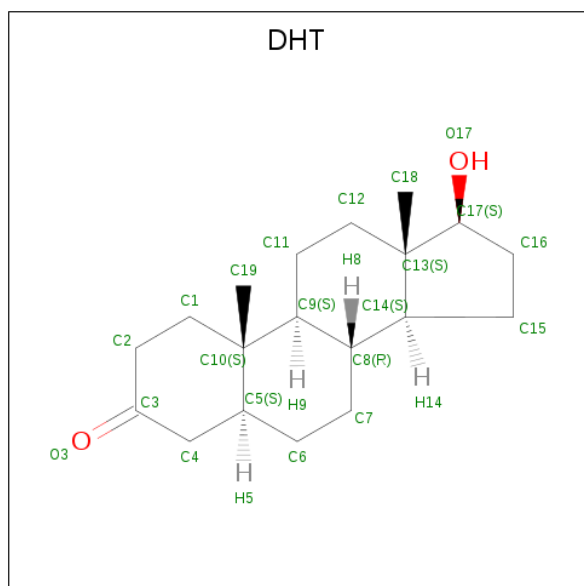
- Molecule 1 is a protein called Estradiol 17-beta-dehydrogenase 1.

Mol	Chain	Residues	Atoms					ZeroOcc	AltConf	Trace
			Total	C	N	O	S			
1	X	277	2146	1358	383	394	11	0	3	0

There is a discrepancy between the modelled and reference sequences:

Chain	Residue	Modelled	Actual	Comment	Reference
X	301	ARG	ALA	CONFLICT	UNP P14061

- Molecule 2 is 5-ALPHA-DIHYDROTESTOSTERONE (three-letter code: DHT) (formula:  $C_{19}H_{30}O_2$ ).



Mol	Chain	Residues	Atoms			ZeroOcc	AltConf
2	X	1	Total	C	O	0	1
			42	38	4		

- Molecule 3 is GLYCEROL (three-letter code: GOL) (formula:  $C_3H_8O_3$ ).



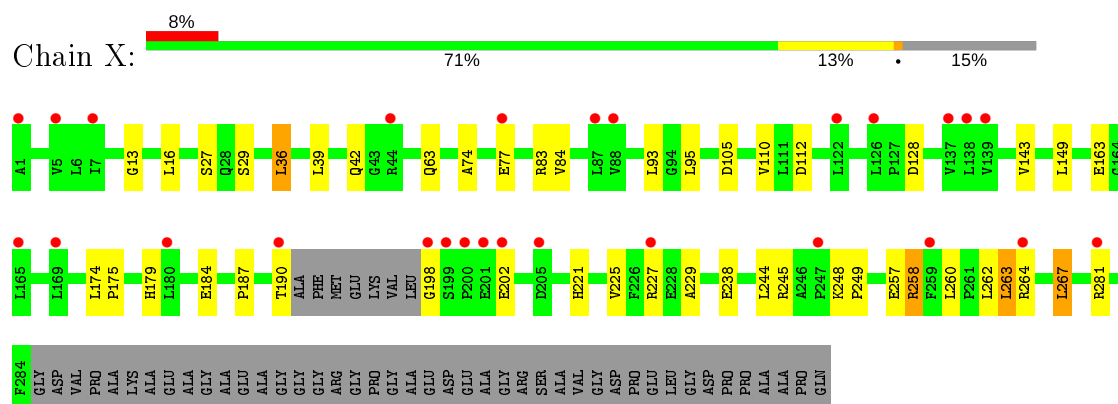
Mol	Chain	Residues	Atoms			ZeroOcc	AltConf
3	X	1	Total	C	O	0	0
			6	3	3		

- Molecule 4 is water.

Mol	Chain	Residues	Atoms		ZeroOcc	AltConf
4	X	43	Total	O	0	0
			43	43		



- Molecule 1: Estradiol 17-beta-dehydrogenase 1



## 4 Data and refinement statistics

Property	Value	Source
Space group	C 1 2 1	Depositor
Cell constants a, b, c, $\alpha$ , $\beta$ , $\gamma$	123.25Å 43.36Å 60.40Å 90.00° 100.18° 90.00°	Depositor
Resolution (Å)	30.33 – 1.70 30.33 – 1.70	Depositor EDS
% Data completeness (in resolution range)	98.0 (30.33-1.70) 98.0 (30.33-1.70)	Depositor EDS
$R_{merge}$	(Not available)	Depositor
$R_{sym}$	(Not available)	Depositor
$\langle I/\sigma(I) \rangle$ <sup>1</sup>	1.78 (at 1.70Å)	Xtriage
Refinement program	REFMAC 5.2.0005	Depositor
R, $R_{free}$	0.217 , 0.257 0.216 , 0.256	Depositor DCC
$R_{free}$ test set	1716 reflections (5.03%)	wwPDB-VP
Wilson B-factor (Å <sup>2</sup> )	31.4	Xtriage
Anisotropy	0.162	Xtriage
Bulk solvent $k_{sol}$ (e/Å <sup>3</sup> ), $B_{sol}$ (Å <sup>2</sup> )	0.43 , 56.7	EDS
L-test for twinning <sup>2</sup>	$\langle  L  \rangle = 0.50$ , $\langle L^2 \rangle = 0.33$	Xtriage
Estimated twinning fraction	No twinning to report.	Xtriage
$F_o, F_c$ correlation	0.96	EDS
Total number of atoms	2237	wwPDB-VP
Average B, all atoms (Å <sup>2</sup> )	38.0	wwPDB-VP

Xtriage's analysis on translational NCS is as follows: *The largest off-origin peak in the Patterson function is 7.55% of the height of the origin peak. No significant pseudotranslation is detected.*

<sup>1</sup>Intensities estimated from amplitudes.

<sup>2</sup>Theoretical values of  $\langle |L| \rangle$ ,  $\langle L^2 \rangle$  for acentric reflections are 0.5, 0.333 respectively for untwinned datasets, and 0.375, 0.2 for perfectly twinned datasets.

## 5 Model quality [i](#)

### 5.1 Standard geometry [i](#)

Bond lengths and bond angles in the following residue types are not validated in this section: GOL, DHT

The Z score for a bond length (or angle) is the number of standard deviations the observed value is removed from the expected value. A bond length (or angle) with  $|Z| > 5$  is considered an outlier worth inspection. RMSZ is the root-mean-square of all Z scores of the bond lengths (or angles).

Mol	Chain	Bond lengths		Bond angles	
		RMSZ	$\# Z  > 5$	RMSZ	$\# Z  > 5$
1	X	0.82	0/2188	0.85	2/2967 (0.1%)

There are no bond length outliers.

All (2) bond angle outliers are listed below:

Mol	Chain	Res	Type	Atoms	Z	Observed( $^{\circ}$ )	Ideal( $^{\circ}$ )
1	X	36	LEU	CA-CB-CG	7.32	132.14	115.30
1	X	112	ASP	CB-CG-OD1	5.63	123.37	118.30

There are no chirality outliers.

There are no planarity outliers.

### 5.2 Too-close contacts [i](#)

In the following table, the Non-H and H(model) columns list the number of non-hydrogen atoms and hydrogen atoms in the chain respectively. The H(added) column lists the number of hydrogen atoms added and optimized by MolProbity. The Clashes column lists the number of clashes within the asymmetric unit, whereas Symm-Clashes lists symmetry related clashes.

Mol	Chain	Non-H	H(model)	H(added)	Clashes	Symm-Clashes
1	X	2146	0	2180	36	0
2	X	42	0	60	10	0
3	X	6	0	8	7	0
4	X	43	0	0	1	0
All	All	2237	0	2248	36	0

The all-atom clashscore is defined as the number of clashes found per 1000 atoms (including hydrogen atoms). The all-atom clashscore for this structure is 8.



All (36) close contacts within the same asymmetric unit are listed below, sorted by their clash magnitude.

Atom-1	Atom-2	Interatomic distance (Å)	Clash overlap (Å)
1:X:143:VAL:HG11	2:X:732[A]:DHT:H72	1.66	0.77
1:X:83:ARG:HA	3:X:328:GOL:H12	1.68	0.74
1:X:149:LEU:HD22	2:X:732[B]:DHT:H192	1.70	0.73
1:X:84:VAL:H	3:X:328:GOL:H12	1.55	0.72
1:X:84:VAL:N	3:X:328:GOL:H12	2.11	0.65
1:X:221:HIS:HE1	2:X:732[B]:DHT:H41	1.64	0.62
1:X:229:ALA:HB2	1:X:258:ARG:HH11	1.65	0.60
1:X:84:VAL:H	3:X:328:GOL:C1	2.15	0.59
1:X:221:HIS:HE1	2:X:732[A]:DHT:O17	1.86	0.58
1:X:187:PRO:HD3	2:X:732[B]:DHT:H122	1.85	0.57
1:X:149:LEU:HD22	2:X:732[B]:DHT:C19	2.34	0.57
1:X:221:HIS:CE1	2:X:732[B]:DHT:H41	2.42	0.55
1:X:128:ASP:OD1	3:X:328:GOL:H11	2.08	0.54
1:X:27:SER:OG	1:X:29:SER:OG	2.24	0.54
1:X:95:LEU:HB2	1:X:110:VAL:HG21	1.91	0.53
1:X:83:ARG:CA	3:X:328:GOL:H12	2.38	0.52
1:X:263:LEU:HD13	1:X:267:LEU:HD22	1.90	0.52
1:X:198:GLY:N	4:X:371:HOH:O	2.42	0.52
1:X:39:LEU:O	1:X:42:GLN:HG2	2.10	0.50
1:X:257[B]:GLU:HG2	1:X:260:LEU:HD12	1.93	0.49
1:X:179:HIS:HB3	1:X:249:PRO:HG2	1.94	0.49
1:X:263:LEU:HD22	1:X:267:LEU:HD13	1.96	0.47
1:X:13:GLY:HA2	1:X:190:THR:CG2	2.45	0.47
1:X:16:LEU:C	1:X:16:LEU:HD23	2.36	0.46
1:X:149:LEU:HD13	2:X:732[B]:DHT:H191	1.98	0.46
1:X:13:GLY:HA2	1:X:190:THR:HG22	1.98	0.45
1:X:245:ARG:HG3	1:X:245:ARG:HH11	1.81	0.45
1:X:244:LEU:HA	1:X:244:LEU:HD23	1.34	0.44
1:X:83:ARG:HA	3:X:328:GOL:C1	2.41	0.43
1:X:229:ALA:HB2	1:X:258:ARG:NH1	2.33	0.43
1:X:74:ALA:O	1:X:77:GLU:HG2	2.19	0.42
1:X:187:PRO:HD3	2:X:732[B]:DHT:C12	2.48	0.42
1:X:229:ALA:CB	1:X:258:ARG:HH11	2.33	0.41
1:X:225:VAL:HG21	2:X:732[A]:DHT:H122	2.02	0.41
1:X:163:GLU:OE2	1:X:184:GLU:OE2	2.40	0.40
1:X:174:LEU:HB3	1:X:175:PRO:CD	2.52	0.40

There are no symmetry-related clashes.

## 5.3 Torsion angles [i](#)

### 5.3.1 Protein backbone [i](#)

In the following table, the Percentiles column shows the percent Ramachandran outliers of the chain as a percentile score with respect to all X-ray entries followed by that with respect to entries of similar resolution.

The Analysed column shows the number of residues for which the backbone conformation was analysed, and the total number of residues.

Mol	Chain	Analysed	Favoured	Allowed	Outliers	Percentiles	
1	X	276/327 (84%)	272 (99%)	4 (1%)	0	100	100

There are no Ramachandran outliers to report.

### 5.3.2 Protein sidechains [i](#)

In the following table, the Percentiles column shows the percent sidechain outliers of the chain as a percentile score with respect to all X-ray entries followed by that with respect to entries of similar resolution.

The Analysed column shows the number of residues for which the sidechain conformation was analysed, and the total number of residues.

Mol	Chain	Analysed	Rotameric	Outliers	Percentiles	
1	X	232/258 (90%)	218 (94%)	14 (6%)	19	6

All (14) residues with a non-rotameric sidechain are listed below:

Mol	Chain	Res	Type
1	X	36	LEU
1	X	63	GLN
1	X	93	LEU
1	X	105	ASP
1	X	202	GLU
1	X	227	ARG
1	X	238	GLU
1	X	248	LYS
1	X	258	ARG
1	X	262	LEU
1	X	263	LEU
1	X	264	ARG
1	X	267	LEU

*Continued on next page...*

*Continued from previous page...*

Mol	Chain	Res	Type
1	X	281	ARG

Some sidechains can be flipped to improve hydrogen bonding and reduce clashes. All (2) such sidechains are listed below:

Mol	Chain	Res	Type
1	X	221	HIS
1	X	231	GLN

### 5.3.3 RNA ⓘ

There are no RNA molecules in this entry.

### 5.4 Non-standard residues in protein, DNA, RNA chains ⓘ

There are no non-standard protein/DNA/RNA residues in this entry.

### 5.5 Carbohydrates ⓘ

There are no carbohydrates in this entry.

### 5.6 Ligand geometry ⓘ

3 ligands are modelled in this entry.

In the following table, the Counts columns list the number of bonds (or angles) for which Mogul statistics could be retrieved, the number of bonds (or angles) that are observed in the model and the number of bonds (or angles) that are defined in the Chemical Component Dictionary. The Link column lists molecule types, if any, to which the group is linked. The Z score for a bond length (or angle) is the number of standard deviations the observed value is removed from the expected value. A bond length (or angle) with  $|Z| > 2$  is considered an outlier worth inspection. RMSZ is the root-mean-square of all Z scores of the bond lengths (or angles).

Mol	Type	Chain	Res	Link	Bond lengths			Bond angles		
					Counts	RMSZ	$\# Z  > 2$	Counts	RMSZ	$\# Z  > 2$
2	DHT	X	732[A]	-	24,24,24	0.46	0	39,39,39	1.73	11 (28%)
2	DHT	X	732[B]	-	24,24,24	0.73	0	39,39,39	1.95	10 (25%)
3	GOL	X	328	-	5,5,5	0.62	0	5,5,5	0.83	0

In the following table, the Chirals column lists the number of chiral outliers, the number of chiral

centers analysed, the number of these observed in the model and the number defined in the Chemical Component Dictionary. Similar counts are reported in the Torsion and Rings columns. '-' means no outliers of that kind were identified.

Mol	Type	Chain	Res	Link	Chirals	Torsions	Rings
3	GOL	X	328	-	-	3/4/4/4	-
2	DHT	X	732[B]	-	-	-	0/4/4/4
2	DHT	X	732[A]	-	-	-	0/4/4/4

There are no bond length outliers.

All (21) bond angle outliers are listed below:

Mol	Chain	Res	Type	Atoms	Z	Observed(°)	Ideal(°)
2	X	732[B]	DHT	C13-C14-C8	-5.22	106.66	114.38
2	X	732[A]	DHT	C5-C4-C3	-4.91	103.85	112.73
2	X	732[B]	DHT	C14-C13-C17	3.76	103.24	99.27
2	X	732[B]	DHT	C11-C9-C10	-3.53	109.84	113.91
2	X	732[B]	DHT	C10-C9-C8	-3.37	108.88	112.42
2	X	732[B]	DHT	C11-C12-C13	-3.24	107.22	112.78
2	X	732[B]	DHT	C4-C5-C10	-3.19	109.77	112.79
2	X	732[A]	DHT	C12-C13-C17	3.14	119.73	115.24
2	X	732[B]	DHT	C2-C1-C10	-3.12	109.47	113.47
2	X	732[A]	DHT	C2-C3-C4	2.86	120.15	115.89
2	X	732[A]	DHT	C11-C9-C10	2.76	117.09	113.91
2	X	732[A]	DHT	C2-C1-C10	2.64	116.86	113.47
2	X	732[A]	DHT	C16-C17-C13	2.48	106.51	104.53
2	X	732[A]	DHT	C18-C13-C12	-2.37	106.84	110.59
2	X	732[A]	DHT	C18-C13-C14	2.29	115.98	111.71
2	X	732[A]	DHT	C14-C13-C17	-2.28	96.86	99.27
2	X	732[B]	DHT	C1-C10-C9	-2.21	107.88	111.35
2	X	732[A]	DHT	C7-C6-C5	-2.15	107.53	111.84
2	X	732[B]	DHT	C5-C4-C3	-2.12	108.89	112.73
2	X	732[B]	DHT	C14-C8-C9	-2.06	106.34	109.09
2	X	732[A]	DHT	O3-C3-C4	-2.01	119.41	121.96

There are no chirality outliers.

All (3) torsion outliers are listed below:

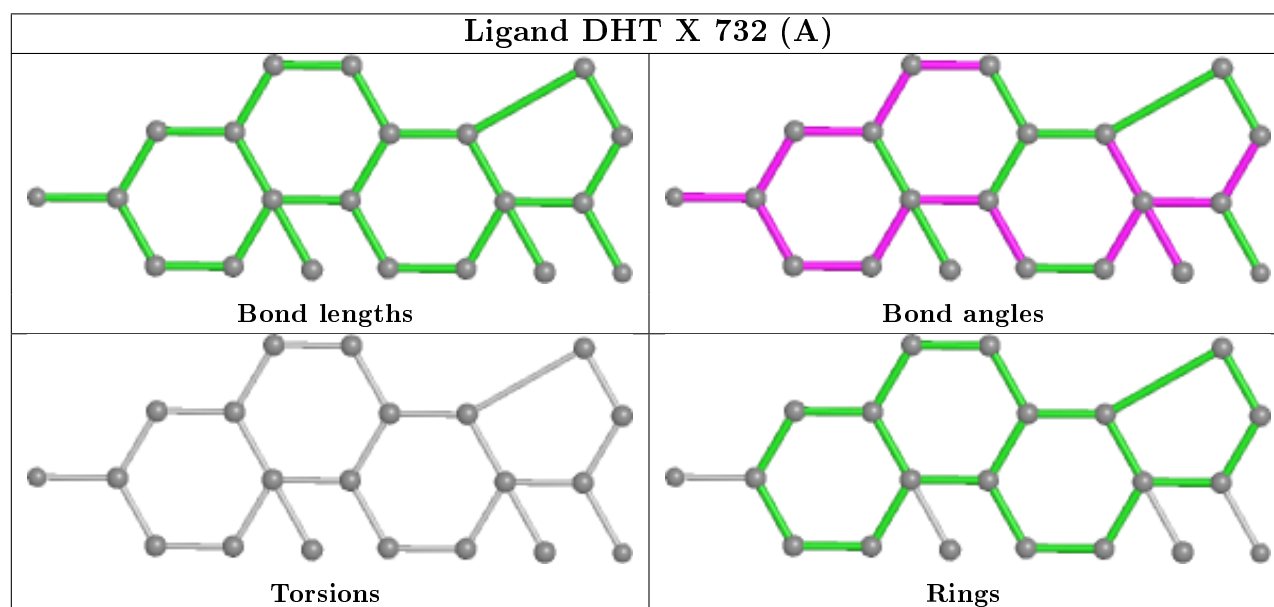
Mol	Chain	Res	Type	Atoms
3	X	328	GOL	O1-C1-C2-C3
3	X	328	GOL	O1-C1-C2-O2
3	X	328	GOL	O2-C2-C3-O3

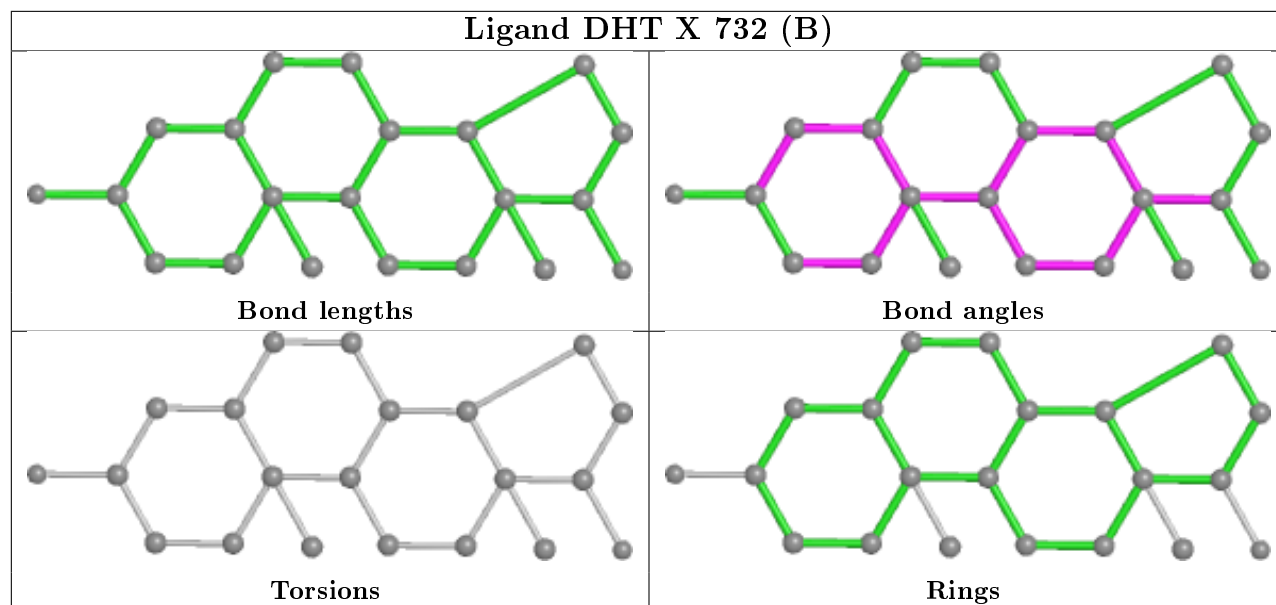
There are no ring outliers.

3 monomers are involved in 17 short contacts:

Mol	Chain	Res	Type	Clashes	Symm-Clashes
2	X	732[A]	DHT	3	0
2	X	732[B]	DHT	7	0
3	X	328	GOL	7	0

The following is a two-dimensional graphical depiction of Mogul quality analysis of bond lengths, bond angles, torsion angles, and ring geometry for all instances of the Ligand of Interest. In addition, ligands with molecular weight > 250 and outliers as shown on the validation Tables will also be included. For torsion angles, if less than 5% of the Mogul distribution of torsion angles is within 10 degrees of the torsion angle in question, then that torsion angle is considered an outlier. Any bond that is central to one or more torsion angles identified as an outlier by Mogul will be highlighted in the graph. For rings, the root-mean-square deviation (RMSD) between the ring in question and similar rings identified by Mogul is calculated over all ring torsion angles. If the average RMSD is greater than 60 degrees and the minimal RMSD between the ring in question and any Mogul-identified rings is also greater than 60 degrees, then that ring is considered an outlier. The outliers are highlighted in purple. The color gray indicates Mogul did not find sufficient equivalents in the CSD to analyse the geometry.





## 5.7 Other polymers [i](#)

There are no such residues in this entry.

## 5.8 Polymer linkage issues [i](#)

There are no chain breaks in this entry.

## 6 Fit of model and data

### 6.1 Protein, DNA and RNA chains

In the following table, the column labelled ‘#RSRZ> 2’ contains the number (and percentage) of RSRZ outliers, followed by percent RSRZ outliers for the chain as percentile scores relative to all X-ray entries and entries of similar resolution. The OWAB column contains the minimum, median, 95<sup>th</sup> percentile and maximum values of the occupancy-weighted average B-factor per residue. The column labelled ‘Q< 0.9’ lists the number of (and percentage) of residues with an average occupancy less than 0.9.

Mol	Chain	Analysed	<RSRZ>	#RSRZ>2	OWAB(Å <sup>2</sup> )	Q<0.9
1	X	277/327 (84%)	0.48	27 (9%) <b>7</b> <b>8</b>	24, 36, 54, 68	0

All (27) RSRZ outliers are listed below:

Mol	Chain	Res	Type	RSRZ
1	X	1	ALA	5.8
1	X	201	GLU	5.1
1	X	202	GLU	5.1
1	X	199	SER	4.5
1	X	198	GLY	4.0
1	X	281	ARG	3.9
1	X	44	ARG	3.8
1	X	227	ARG	3.6
1	X	259	PHE	3.6
1	X	190	THR	3.6
1	X	247	PRO	3.6
1	X	180	LEU	3.4
1	X	77	GLU	3.3
1	X	264	ARG	3.1
1	X	139	VAL	2.8
1	X	200	PRO	2.8
1	X	122	LEU	2.7
1	X	87	LEU	2.6
1	X	137	VAL	2.6
1	X	138	LEU	2.6
1	X	205	ASP	2.6
1	X	165	LEU	2.4
1	X	88	VAL	2.2
1	X	169	LEU	2.1
1	X	5	VAL	2.1
1	X	126	LEU	2.1
1	X	7	ILE	2.0

## 6.2 Non-standard residues in protein, DNA, RNA chains ⓘ

There are no non-standard protein/DNA/RNA residues in this entry.

## 6.3 Carbohydrates ⓘ

There are no carbohydrates in this entry.

## 6.4 Ligands ⓘ

In the following table, the Atoms column lists the number of modelled atoms in the group and the number defined in the chemical component dictionary. The B-factors column lists the minimum, median, 95<sup>th</sup> percentile and maximum values of B factors of atoms in the group. The column labelled 'Q< 0.9' lists the number of atoms with occupancy less than 0.9.

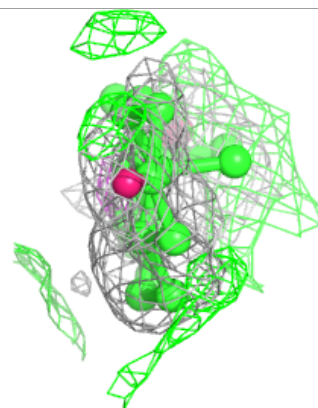
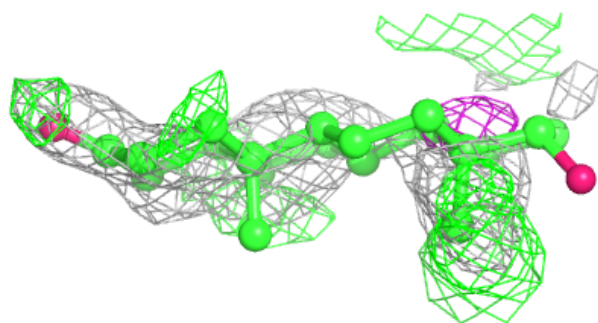
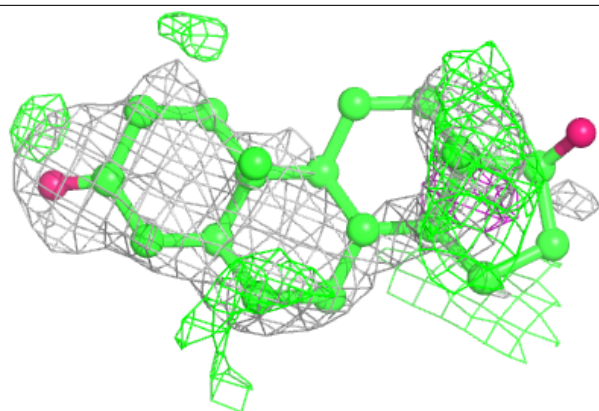
Mol	Type	Chain	Res	Atoms	RSCC	RSR	B-factors( $\text{\AA}^2$ )	Q<0.9
3	GOL	X	328	6/6	0.57	0.23	44,49,51,56	0
2	DHT	X	732[B]	21/21	0.60	0.43	43,46,47,50	21
2	DHT	X	732[A]	21/21	0.60	0.43	39,41,42,42	21

The following is a graphical depiction of the model fit to experimental electron density of all instances of the Ligand of Interest. In addition, ligands with molecular weight > 250 and outliers as shown on the geometry validation Tables will also be included. Each fit is shown from different orientation to approximate a three-dimensional view.

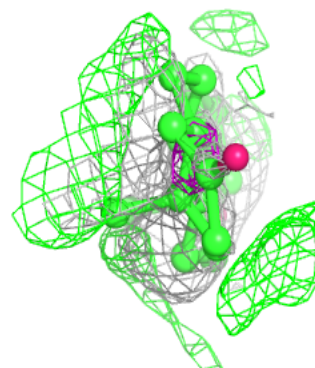
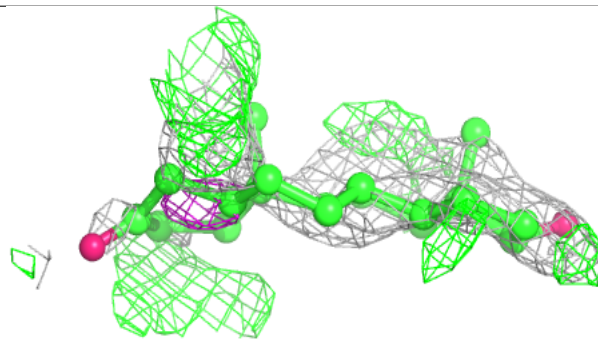
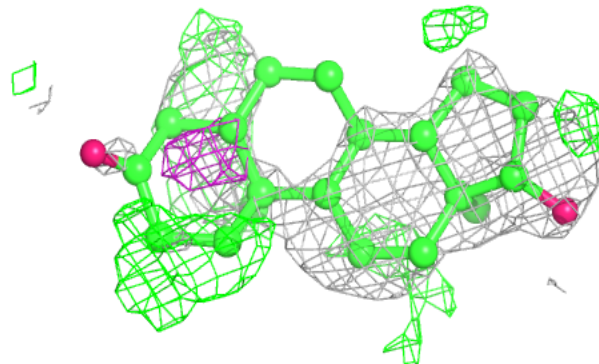


**Electron density around DHT X 732 (B):**

$2mF_o-DF_c$  (at 0.7 rmsd) in gray  
 $mF_o-DF_c$  (at 3 rmsd) in purple (negative)  
and green (positive)

**Electron density around DHT X 732 (A):**

$2mF_o-DF_c$  (at 0.7 rmsd) in gray  
 $mF_o-DF_c$  (at 3 rmsd) in purple (negative)  
and green (positive)



## 6.5 Other polymers

There are no such residues in this entry.