



Full wwPDB X-ray Structure Validation Report ⓘ

Aug 6, 2020 – 12:18 PM BST

PDB ID : 3KLY
Title : Pentameric formate channel
Authors : Waight, A.B.; Wang, D.N.; New York Consortium on Membrane Protein Structure (NYCOMPS)
Deposited on : 2009-11-09
Resolution : 2.10 Å(reported)

This is a Full wwPDB X-ray Structure Validation Report for a publicly released PDB entry.

We welcome your comments at validation@mail.wwpdb.org

A user guide is available at

<https://www.wwpdb.org/validation/2017/XrayValidationReportHelp>

with specific help available everywhere you see the ⓘ symbol.

The following versions of software and data (see [references ⓘ](#)) were used in the production of this report:

MolProbity : 4.02b-467
Mogul : 1.8.5 (274361), CSD as541be (2020)
Xtriage (Phenix) : 1.13
EDS : 2.13.1
buster-report : 1.1.7 (2018)
Percentile statistics : 20191225.v01 (using entries in the PDB archive December 25th 2019)
Refmac : 5.8.0158
CCP4 : 7.0.044 (Gargrove)
Ideal geometry (proteins) : Engh & Huber (2001)
Ideal geometry (DNA, RNA) : Parkinson et al. (1996)
Validation Pipeline (wwPDB-VP) : 2.13.1

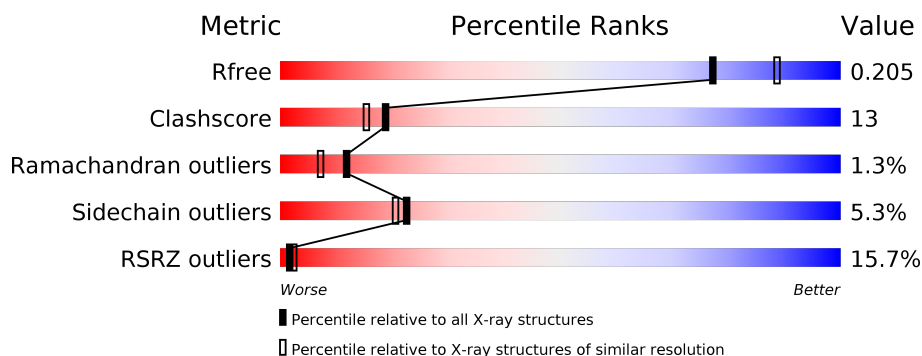
1 Overall quality at a glance

The following experimental techniques were used to determine the structure:

X-RAY DIFFRACTION

The reported resolution of this entry is 2.10 Å.

Percentile scores (ranging between 0-100) for global validation metrics of the entry are shown in the following graphic. The table shows the number of entries on which the scores are based.



Metric	Whole archive (#Entries)	Similar resolution (#Entries, resolution range(Å))
R_{free}	130704	5197 (2.10-2.10)
Clashscore	141614	5710 (2.10-2.10)
Ramachandran outliers	138981	5647 (2.10-2.10)
Sidechain outliers	138945	5648 (2.10-2.10)
RSRZ outliers	127900	5083 (2.10-2.10)

The table below summarises the geometric issues observed across the polymeric chains and their fit to the electron density. The red, orange, yellow and green segments on the lower bar indicate the fraction of residues that contain outliers for ≥ 3 , 2, 1 and 0 types of geometric quality criteria respectively. A grey segment represents the fraction of residues that are not modelled. The numeric value for each fraction is indicated below the corresponding segment, with a dot representing fractions $\leq 5\%$. The upper red bar (where present) indicates the fraction of residues that have poor fit to the electron density. The numeric value is given above the bar.

Mol	Chain	Length	Quality of chain
1	A	280	<div> <div>12%</div> <div> <div></div> <div>72%</div> <div>18%</div> <div>•</div> <div>8%</div> </div> </div>
1	B	280	<div> <div>16%</div> <div> <div></div> <div>72%</div> <div>16%</div> <div>•</div> <div>9%</div> </div> </div>
1	C	280	<div> <div>18%</div> <div> <div></div> <div>73%</div> <div>16%</div> <div>•</div> <div>8%</div> </div> </div>
1	D	280	<div> <div>17%</div> <div> <div></div> <div>71%</div> <div>18%</div> <div>•</div> <div>10%</div> </div> </div>
1	E	280	<div> <div>9%</div> <div> <div></div> <div>72%</div> <div>17%</div> <div>•</div> <div>9%</div> </div> </div>

The following table lists non-polymeric compounds, carbohydrate monomers and non-standard residues in protein, DNA, RNA chains that are outliers for geometric or electron-density-fit criteria:

Mol	Type	Chain	Res	Chirality	Geometry	Clashes	Electron density
2	BOG	B	285	-	-	X	-

2 Entry composition [i](#)

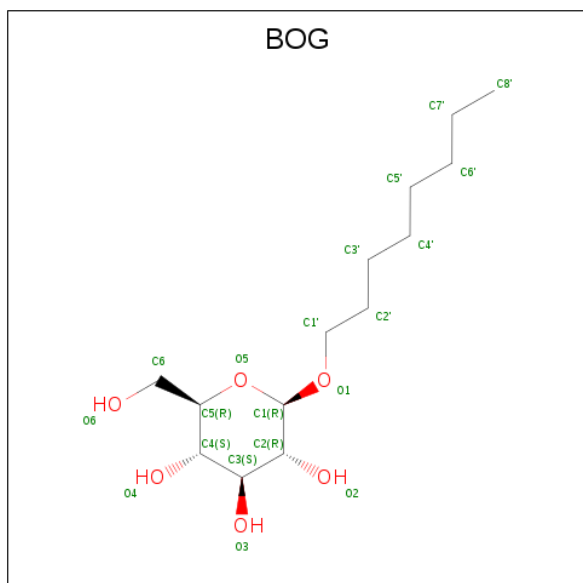
There are 3 unique types of molecules in this entry. The entry contains 10459 atoms, of which 0 are hydrogens and 0 are deuteriums.

In the tables below, the ZeroOcc column contains the number of atoms modelled with zero occupancy, the AltConf column contains the number of residues with at least one atom in alternate conformation and the Trace column contains the number of residues modelled with at most 2 atoms.

- Molecule 1 is a protein called Putative formate transporter 1.

Mol	Chain	Residues	Atoms					ZeroOcc	AltConf	Trace
1	A	257	Total	C	N	O	S	0	0	0
			1961	1306	311	328	16			
1	B	255	Total	C	N	O	S	0	0	0
			1953	1302	309	326	16			
1	C	259	Total	C	N	O	S	0	0	0
			1982	1319	314	333	16			
1	D	252	Total	C	N	O	S	0	0	0
			1935	1291	305	323	16			
1	E	256	Total	C	N	O	S	0	0	0
			1962	1307	310	329	16			

- Molecule 2 is octyl beta-D-glucopyranoside (three-letter code: BOG) (formula: C₁₄H₂₈O₆).



Mol	Chain	Residues	Atoms			ZeroOcc	AltConf
2	A	1	Total	C	O	0	0
			20	14	6		

Continued on next page...

Continued from previous page...

Mol	Chain	Residues	Atoms			ZeroOcc	AltConf
2	A	1	Total	C	O	0	0
			20	14	6		
2	B	1	Total	C	O	0	0
			20	14	6		
2	B	1	Total	C	O	0	0
			20	14	6		
2	B	1	Total	C	O	0	0
			20	14	6		
2	B	1	Total	C	O	0	0
			20	14	6		
2	B	1	Total	C	O	0	0
			20	14	6		
2	C	1	Total	C	O	0	0
			20	14	6		
2	C	1	Total	C	O	0	0
			20	14	6		
2	C	1	Total	C	O	0	0
			20	14	6		
2	D	1	Total	C	O	0	0
			20	14	6		
2	D	1	Total	C	O	0	0
			20	14	6		
2	E	1	Total	C	O	0	0
			20	14	6		
2	E	1	Total	C	O	0	0
			20	14	6		
2	E	1	Total	C	O	0	0
			20	14	6		

- Molecule 3 is water.

Mol	Chain	Residues	Atoms		ZeroOcc	AltConf
3	A	79	Total	O	0	0
			79	79		
3	B	87	Total	O	0	0
			87	87		
3	C	74	Total	O	0	0
			74	74		
3	D	48	Total	O	0	0
			48	48		

Continued on next page...

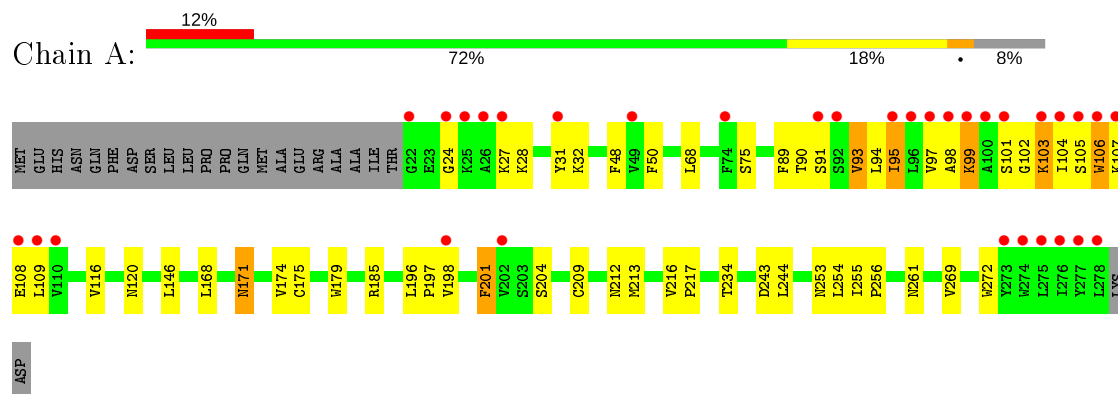
Continued from previous page...

Mol	Chain	Residues	Atoms		ZeroOcc	AltConf
3	E	58	Total	O	0	0
			58	58		

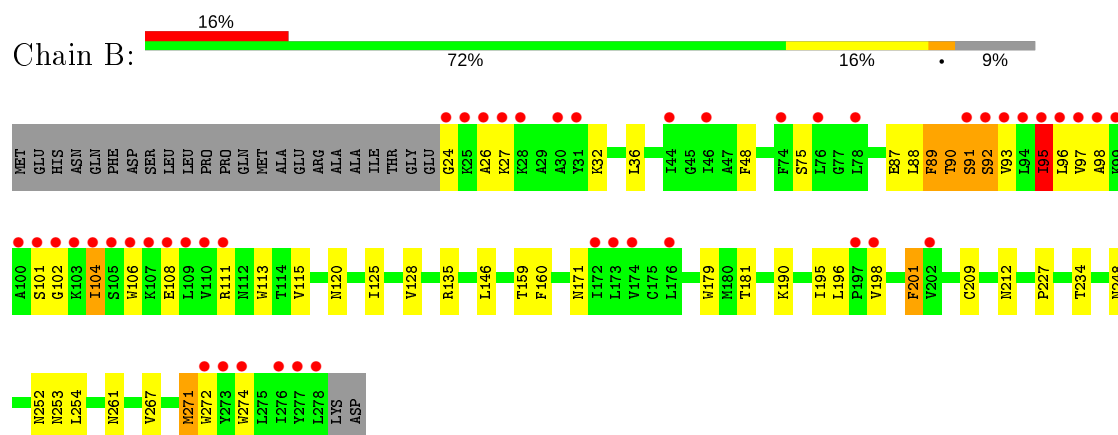
3 Residue-property plots [i](#)

These plots are drawn for all protein, RNA, DNA and oligosaccharide chains in the entry. The first graphic for a chain summarises the proportions of the various outlier classes displayed in the second graphic. The second graphic shows the sequence view annotated by issues in geometry and electron density. Residues are color-coded according to the number of geometric quality criteria for which they contain at least one outlier: green = 0, yellow = 1, orange = 2 and red = 3 or more. A red dot above a residue indicates a poor fit to the electron density ($RSRZ > 2$). Stretches of 2 or more consecutive residues without any outlier are shown as a green connector. Residues present in the sample, but not in the model, are shown in grey.

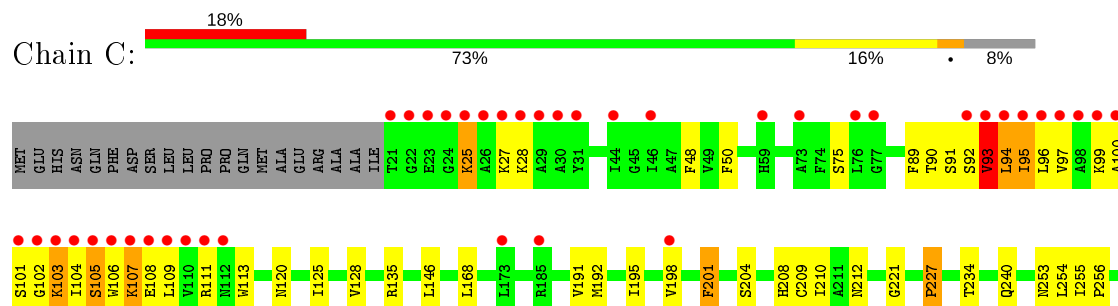
• Molecule 1: Putative formate transporter 1



• Molecule 1: Putative formate transporter 1

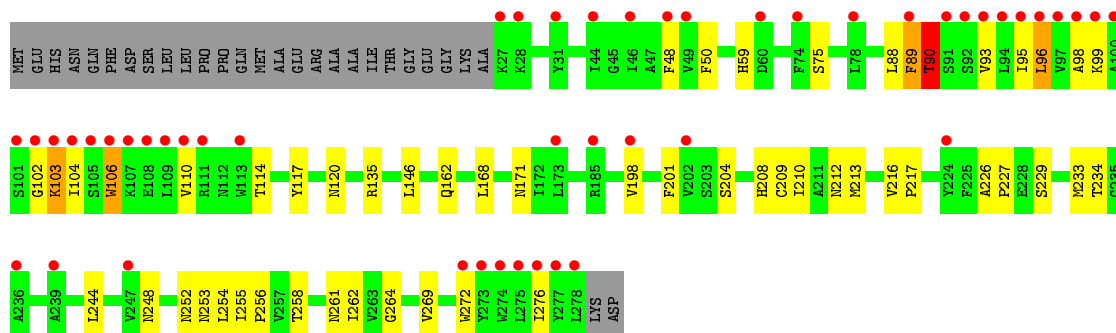


• Molecule 1: Putative formate transporter 1

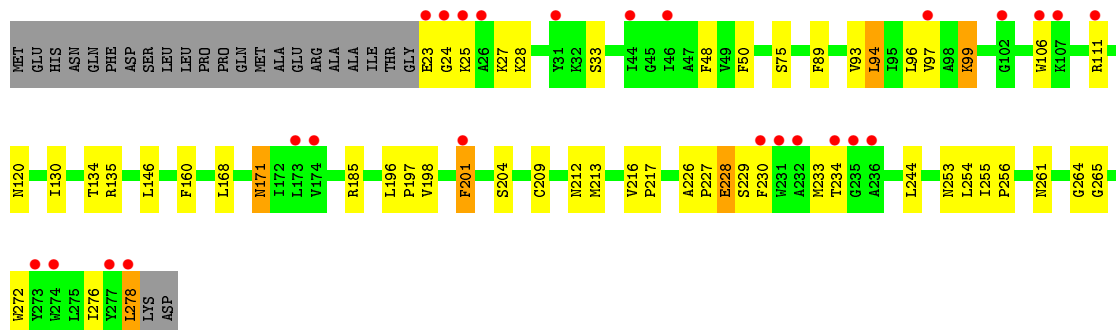




• Molecule 1: Putative formate transporter 1



• Molecule 1: Putative formate transporter 1



4 Data and refinement statistics

Property	Value	Source
Space group	P 21 21 21	Depositor
Cell constants a, b, c, α , β , γ	100.80Å 101.03Å 192.63Å 90.00° 90.00° 90.00°	Depositor
Resolution (Å)	33.46 – 2.10 33.46 – 2.10	Depositor EDS
% Data completeness (in resolution range)	90.3 (33.46-2.10) 90.3 (33.46-2.10)	Depositor EDS
R_{merge}	(Not available)	Depositor
R_{sym}	0.11	Depositor
$\langle I/\sigma(I) \rangle$ ¹	2.98 (at 2.10Å)	Xtriage
Refinement program	PHENIX (phenix.refine: 1.5_2)	Depositor
R, R_{free}	0.179 , 0.209 0.177 , 0.205	Depositor DCC
R_{free} test set	1592 reflections (1.53%)	wwPDB-VP
Wilson B-factor (Å ²)	41.6	Xtriage
Anisotropy	0.159	Xtriage
Bulk solvent k_{sol} (e/Å ³), B_{sol} (Å ²)	0.36 , 90.9	EDS
L-test for twinning ²	$\langle L \rangle = 0.48$, $\langle L^2 \rangle = 0.31$	Xtriage
Estimated twinning fraction	0.022 for k,h,-l	Xtriage
F_o, F_c correlation	0.96	EDS
Total number of atoms	10459	wwPDB-VP
Average B, all atoms (Å ²)	68.0	wwPDB-VP

Xtriage's analysis on translational NCS is as follows: *The largest off-origin peak in the Patterson function is 2.63% of the height of the origin peak. No significant pseudotranslation is detected.*

¹Intensities estimated from amplitudes.

²Theoretical values of $\langle |L| \rangle$, $\langle L^2 \rangle$ for acentric reflections are 0.5, 0.333 respectively for untwinned datasets, and 0.375, 0.2 for perfectly twinned datasets.

5 Model quality [i](#)

5.1 Standard geometry [i](#)

Bond lengths and bond angles in the following residue types are not validated in this section: BOG

The Z score for a bond length (or angle) is the number of standard deviations the observed value is removed from the expected value. A bond length (or angle) with $|Z| > 5$ is considered an outlier worth inspection. RMSZ is the root-mean-square of all Z scores of the bond lengths (or angles).

Mol	Chain	Bond lengths		Bond angles	
		RMSZ	$\# Z > 5$	RMSZ	$\# Z > 5$
1	A	0.45	0/2009	0.53	0/2727
1	B	0.43	0/2001	0.50	0/2717
1	C	0.41	0/2030	0.48	0/2755
1	D	0.33	0/1983	0.45	0/2694
1	E	0.39	0/2010	0.47	0/2729
All	All	0.40	0/10033	0.49	0/13622

There are no bond length outliers.

There are no bond angle outliers.

There are no chirality outliers.

There are no planarity outliers.

5.2 Too-close contacts [i](#)

In the following table, the Non-H and H(model) columns list the number of non-hydrogen atoms and hydrogen atoms in the chain respectively. The H(added) column lists the number of hydrogen atoms added and optimized by MolProbity. The Clashes column lists the number of clashes within the asymmetric unit, whereas Symm-Clashes lists symmetry related clashes.

Mol	Chain	Non-H	H(model)	H(added)	Clashes	Symm-Clashes
1	A	1961	0	2023	61	0
1	B	1953	0	2019	73	0
1	C	1982	0	2048	45	0
1	D	1935	0	1998	37	0
1	E	1962	0	2025	44	0
2	A	40	0	52	5	0
2	B	120	0	165	37	0
2	C	60	0	81	9	0

Continued on next page...

Continued from previous page...

Mol	Chain	Non-H	H(model)	H(added)	Clashes	Symm-Clashes
2	D	40	0	56	9	0
2	E	60	0	83	3	0
3	A	79	0	0	0	0
3	B	87	0	0	1	0
3	C	74	0	0	2	0
3	D	48	0	0	0	0
3	E	58	0	0	0	0
All	All	10459	0	10550	270	0

The all-atom clashscore is defined as the number of clashes found per 1000 atoms (including hydrogen atoms). The all-atom clashscore for this structure is 13.

All (270) close contacts within the same asymmetric unit are listed below, sorted by their clash magnitude.

Atom-1	Atom-2	Interatomic distance (Å)	Clash overlap (Å)
1:A:104:ILE:HB	1:A:105:SER:HA	1.26	1.18
1:B:91:SER:HA	1:B:92:SER:HB2	1.34	1.05
1:B:190:LYS:NZ	2:B:285:BOG:H5	1.71	1.04
1:A:97:VAL:H	1:A:98:ALA:HB3	1.22	1.03
2:D:281:BOG:H4'2	2:D:281:BOG:O2	1.64	0.97
1:E:228:GLU:CD	1:E:228:GLU:H	1.66	0.97
1:E:89:PHE:H	1:E:120:ASN:HD21	1.11	0.96
1:B:190:LYS:HZ2	2:B:285:BOG:H5	1.29	0.94
1:E:23:GLU:HG2	1:E:24:GLY:H	1.30	0.94
1:A:101:SER:HB3	1:A:102:GLY:HA2	1.49	0.94
1:B:160:PHE:H	2:B:284:BOG:H5'2	1.35	0.91
1:B:125:ILE:HD12	2:B:283:BOG:H8'1	1.52	0.90
1:C:125:ILE:HD12	2:C:283:BOG:H8'1	1.55	0.89
1:C:212:ASN:HD22	1:C:253:ASN:HD21	1.23	0.87
1:A:31:TYR:HB3	1:E:278:LEU:HD22	1.58	0.86
1:B:90:THR:H	1:B:92:SER:HB2	1.40	0.86
1:A:185:ARG:O	1:A:185:ARG:HD3	1.74	0.85
1:C:89:PHE:H	1:C:120:ASN:HD21	1.22	0.85
2:C:281:BOG:O5	2:D:281:BOG:O4	1.95	0.85
1:B:91:SER:HA	1:B:92:SER:CB	2.08	0.84
1:B:89:PHE:H	1:B:120:ASN:HD21	1.24	0.83
1:B:212:ASN:HD22	1:B:253:ASN:HD21	1.25	0.81
1:B:125:ILE:HG23	2:B:283:BOG:H8'1	1.63	0.80
2:D:281:BOG:C2'	2:D:281:BOG:O2	2.30	0.80
1:A:97:VAL:N	1:A:98:ALA:HB3	1.97	0.80
1:B:209:CYS:H	1:B:261:ASN:HD21	1.29	0.80

Continued on next page...

Continued from previous page...

Atom-1	Atom-2	Interatomic distance (Å)	Clash overlap (Å)
2:D:281:BOG:O2	2:D:281:BOG:C4'	2.30	0.79
2:D:281:BOG:O2	2:D:281:BOG:C3'	2.30	0.79
2:D:281:BOG:C1'	2:D:281:BOG:O2	2.30	0.78
1:A:97:VAL:H	1:A:98:ALA:CB	1.96	0.78
1:B:90:THR:HG23	1:B:90:THR:O	1.85	0.77
1:E:212:ASN:HD22	1:E:253:ASN:HD21	1.30	0.77
1:A:209:CYS:H	1:A:261:ASN:HD21	1.32	0.77
1:D:209:CYS:H	1:D:261:ASN:HD21	1.31	0.77
1:C:209:CYS:H	1:C:261:ASN:HD21	1.32	0.76
1:D:89:PHE:O	1:D:90:THR:HB	1.85	0.75
1:E:209:CYS:H	1:E:261:ASN:HD21	1.36	0.74
1:C:93:VAL:HG22	1:C:113:TRP:CE2	2.22	0.74
1:B:190:LYS:NZ	2:B:285:BOG:H2'1	2.03	0.73
1:D:89:PHE:H	1:D:120:ASN:HD21	1.35	0.73
1:D:212:ASN:HD22	1:D:253:ASN:HD21	1.38	0.72
1:E:89:PHE:H	1:E:120:ASN:ND2	1.87	0.72
1:B:125:ILE:HG23	2:B:283:BOG:C8'	2.19	0.72
1:B:181:THR:OG1	2:B:285:BOG:H8'1	1.89	0.72
1:B:91:SER:CA	1:B:92:SER:HB2	2.19	0.72
2:D:281:BOG:H4'2	2:D:281:BOG:HO2	1.53	0.71
1:E:272:TRP:CZ2	1:E:276:ILE:HD11	2.25	0.71
1:D:95:ILE:HD11	1:D:104:ILE:HG22	1.74	0.70
1:A:104:ILE:CB	1:A:105:SER:HA	2.14	0.70
1:B:190:LYS:HZ2	2:B:285:BOG:C5	2.05	0.69
1:B:196:LEU:HG	2:B:281:BOG:H61	1.73	0.69
1:C:97:VAL:HG22	1:C:109:LEU:HD21	1.73	0.69
1:A:104:ILE:HB	1:A:105:SER:CA	2.15	0.69
1:A:212:ASN:HD22	1:A:253:ASN:HD21	1.41	0.69
1:B:90:THR:N	1:B:92:SER:HB2	2.08	0.68
2:A:281:BOG:O6	1:B:32:LYS:HE3	1.93	0.68
1:A:89:PHE:H	1:A:120:ASN:HD21	1.41	0.68
1:B:160:PHE:N	2:B:284:BOG:H5'2	2.09	0.67
2:A:281:BOG:O6	1:B:32:LYS:CE	2.43	0.66
1:E:23:GLU:HG2	1:E:24:GLY:N	2.09	0.66
1:E:96:LEU:HD11	2:E:310:BOG:H6'1	1.77	0.66
1:B:248:ASN:O	1:B:252:ASN:HB2	1.96	0.65
1:A:255:ILE:HB	1:A:256:PRO:HD3	1.79	0.65
1:A:90:THR:HB	1:A:171:ASN:ND2	2.11	0.65
1:B:88:LEU:O	1:B:90:THR:N	2.30	0.65
1:B:75:SER:HA	1:B:198:VAL:HG11	1.80	0.64
1:A:104:ILE:HG22	1:A:108:GLU:HB3	1.78	0.64

Continued on next page...

Continued from previous page...

Atom-1	Atom-2	Interatomic distance (Å)	Clash overlap (Å)
1:B:92:SER:HA	2:B:310:BOG:O2	1.98	0.63
1:B:90:THR:N	1:B:91:SER:HA	2.13	0.63
1:A:99:LYS:HZ3	1:A:106:TRP:HD1	1.47	0.63
1:A:101:SER:HB3	1:A:102:GLY:CA	2.26	0.63
2:B:281:BOG:H7'1	2:B:282:BOG:H7'1	1.81	0.63
1:C:89:PHE:O	1:C:93:VAL:HB	1.99	0.62
1:A:106:TRP:CZ3	1:A:109:LEU:HD22	2.34	0.62
1:A:185:ARG:HD3	1:A:185:ARG:C	2.18	0.62
1:B:196:LEU:HD21	2:B:281:BOG:H1'1	1.82	0.62
1:D:255:ILE:HB	1:D:256:PRO:HD3	1.82	0.62
1:C:107:LYS:HE3	1:C:108:GLU:HG2	1.81	0.61
1:C:89:PHE:H	1:C:120:ASN:ND2	1.95	0.61
1:C:92:SER:HB2	3:C:336:HOH:O	2.01	0.60
1:C:240:GLN:NE2	2:C:282:BOG:H3'2	2.16	0.60
1:B:91:SER:HB2	1:B:171:ASN:HD21	1.66	0.60
1:C:240:GLN:HE21	2:C:282:BOG:H3'2	1.66	0.60
1:B:93:VAL:HG23	2:B:310:BOG:H2	1.82	0.60
1:B:190:LYS:CE	2:B:285:BOG:H5	2.31	0.60
1:B:27:LYS:N	1:B:27:LYS:HD2	2.17	0.59
1:A:68:LEU:HD21	2:B:282:BOG:H2'1	1.84	0.59
1:B:90:THR:CG2	1:B:90:THR:O	2.50	0.59
1:A:103:LYS:O	1:A:104:ILE:HD13	2.02	0.59
1:B:209:CYS:H	1:B:261:ASN:ND2	2.00	0.59
1:B:95:ILE:HG23	1:B:95:ILE:O	2.03	0.59
1:E:146:LEU:HD11	1:E:234:THR:HB	1.85	0.59
1:D:209:CYS:H	1:D:261:ASN:ND2	1.98	0.59
1:C:135:ARG:HH22	1:C:227:PRO:HG3	1.68	0.58
1:D:272:TRP:O	1:D:276:ILE:HG12	2.03	0.58
1:A:94:LEU:HD13	1:A:175:CYS:SG	2.44	0.58
1:E:255:ILE:HB	1:E:256:PRO:HD3	1.85	0.58
1:A:179:TRP:HH2	2:A:281:BOG:O2	1.86	0.57
1:A:97:VAL:HB	1:A:269:VAL:HG13	1.86	0.57
1:C:255:ILE:HB	1:C:256:PRO:HD3	1.85	0.57
1:B:190:LYS:HZ2	2:B:285:BOG:H2'1	1.69	0.57
1:A:95:ILE:HG22	1:A:98:ALA:HB1	1.87	0.56
1:B:190:LYS:HZ3	2:B:285:BOG:C5'	2.17	0.56
1:B:93:VAL:HG22	1:B:93:VAL:O	2.04	0.56
1:B:195:ILE:HD13	2:B:282:BOG:H3	1.87	0.56
1:A:106:TRP:C	1:A:108:GLU:H	2.09	0.56
1:C:135:ARG:NH2	1:C:227:PRO:HG3	2.20	0.56
1:D:89:PHE:H	1:D:120:ASN:ND2	2.02	0.56

Continued on next page...

Continued from previous page...

Atom-1	Atom-2	Interatomic distance (Å)	Clash overlap (Å)
1:D:75:SER:HA	1:D:198:VAL:HG11	1.87	0.56
1:C:209:CYS:H	1:C:261:ASN:ND2	2.02	0.55
1:C:93:VAL:HG22	1:C:113:TRP:NE1	2.21	0.55
1:A:103:LYS:H	1:A:103:LYS:HD3	1.71	0.55
1:D:110:VAL:O	1:D:114:THR:HG23	2.06	0.55
1:E:209:CYS:H	1:E:261:ASN:ND2	2.05	0.55
1:B:128:VAL:HG11	2:B:283:BOG:H6'2	1.88	0.55
1:E:94:LEU:O	1:E:97:VAL:HG22	2.07	0.55
1:A:93:VAL:HG12	1:A:93:VAL:O	2.06	0.55
1:B:190:LYS:HZ3	2:B:285:BOG:H5'1	1.70	0.55
1:A:209:CYS:H	1:A:261:ASN:ND2	2.02	0.55
1:E:25:LYS:HD3	1:E:28:LYS:HD2	1.89	0.55
1:D:146:LEU:HD11	1:D:234:THR:HB	1.89	0.54
1:C:273:TYR:O	1:C:276:ILE:HG13	2.08	0.54
1:E:135:ARG:HH22	1:E:227:PRO:HG3	1.72	0.54
1:D:98:ALA:HB1	1:D:104:ILE:HD13	1.90	0.54
1:B:91:SER:CA	1:B:92:SER:CB	2.84	0.53
1:C:128:VAL:HG11	2:C:283:BOG:H8'2	1.91	0.53
2:C:282:BOG:H4'1	2:C:282:BOG:H8'2	1.90	0.53
1:C:99:LYS:HD2	1:C:100:ALA:HA	1.88	0.53
2:B:281:BOG:O1	2:B:281:BOG:H4'2	2.09	0.53
1:D:89:PHE:N	1:D:120:ASN:HD21	2.06	0.53
1:E:228:GLU:CD	1:E:228:GLU:N	2.48	0.52
1:B:160:PHE:HB2	2:B:284:BOG:H4'2	1.90	0.52
1:C:95:ILE:C	1:C:95:ILE:HD13	2.29	0.52
1:B:190:LYS:HZ3	2:B:285:BOG:H2'1	1.75	0.52
1:A:89:PHE:O	1:A:93:VAL:HB	2.08	0.52
1:A:94:LEU:HG	1:A:94:LEU:O	2.10	0.52
1:C:125:ILE:HD12	2:C:283:BOG:C8'	2.34	0.52
1:A:179:TRP:HZ3	1:A:272:TRP:CZ2	2.27	0.51
1:B:88:LEU:HD23	1:B:90:THR:HG21	1.92	0.51
1:E:111:ARG:HA	1:E:111:ARG:NE	2.25	0.51
1:D:89:PHE:O	1:D:90:THR:CB	2.58	0.51
1:A:90:THR:HB	1:A:171:ASN:HD21	1.76	0.51
1:E:93:VAL:O	1:E:97:VAL:HG13	2.11	0.51
1:E:23:GLU:CG	1:E:24:GLY:H	2.13	0.51
1:C:89:PHE:N	1:C:120:ASN:HD21	2.01	0.50
1:D:213:MET:O	1:D:217:PRO:HG2	2.10	0.50
1:A:106:TRP:O	1:A:107:LYS:HB3	2.10	0.50
1:A:185:ARG:HD2	1:E:185:ARG:NE	2.25	0.50
1:A:146:LEU:HD11	1:A:234:THR:HB	1.93	0.50

Continued on next page...

Continued from previous page...

Atom-1	Atom-2	Interatomic distance (Å)	Clash overlap (Å)
1:B:89:PHE:H	1:B:120:ASN:ND2	2.02	0.50
1:B:125:ILE:HD12	2:B:283:BOG:C8'	2.34	0.50
1:B:91:SER:H	2:B:310:BOG:H8'3	1.77	0.50
1:A:185:ARG:CD	1:A:185:ARG:O	2.53	0.50
1:D:216:VAL:HB	1:D:217:PRO:HD3	1.92	0.49
1:B:98:ALA:HB3	1:B:101:SER:HA	1.94	0.49
1:D:99:LYS:O	1:D:103:LYS:HE3	2.12	0.49
1:C:253:ASN:O	1:C:256:PRO:HD2	2.12	0.49
1:D:269:VAL:HG21	2:D:310:BOG:H6'1	1.95	0.49
1:B:271:MET:HA	1:B:274:TRP:CE3	2.48	0.49
1:B:190:LYS:HZ2	2:B:285:BOG:H1	1.78	0.49
1:B:160:PHE:CB	2:B:284:BOG:H4'2	2.43	0.48
1:C:75:SER:HA	1:C:198:VAL:HG11	1.93	0.48
1:E:160:PHE:CD2	1:E:256:PRO:HG3	2.48	0.48
1:A:179:TRP:CH2	2:A:281:BOG:O2	2.65	0.48
1:A:93:VAL:HG21	1:A:116:VAL:HG11	1.95	0.48
1:A:89:PHE:H	1:A:120:ASN:ND2	2.07	0.48
1:E:75:SER:HA	1:E:198:VAL:HG11	1.95	0.48
1:A:75:SER:HA	1:A:198:VAL:HG11	1.95	0.48
1:E:229:SER:O	1:E:233:MET:HB2	2.14	0.48
1:A:216:VAL:HB	1:A:217:PRO:HD3	1.96	0.48
1:A:102:GLY:H	1:A:103:LYS:HA	1.79	0.48
1:D:99:LYS:HB3	1:D:103:LYS:HB2	1.95	0.47
1:C:91:SER:HB2	3:C:356:HOH:O	2.15	0.47
2:E:282:BOG:H1'1	2:E:282:BOG:H4'2	1.61	0.47
1:D:208:HIS:CE1	1:D:210:ILE:HB	2.49	0.47
1:D:88:LEU:O	1:D:89:PHE:C	2.53	0.47
1:E:272:TRP:CE2	1:E:276:ILE:HD11	2.50	0.47
1:C:191:VAL:O	1:C:195:ILE:HG13	2.15	0.47
1:E:168:LEU:HD12	1:E:264:GLY:HA2	1.95	0.47
1:A:99:LYS:NZ	1:A:106:TRP:CD1	2.81	0.47
1:A:102:GLY:N	1:A:103:LYS:HA	2.26	0.47
1:A:94:LEU:HD23	1:A:94:LEU:H	1.79	0.47
1:B:24:GLY:C	1:B:26:ALA:H	2.19	0.46
1:C:25:LYS:C	1:C:27:LYS:H	2.18	0.46
1:B:93:VAL:CG2	2:B:310:BOG:H2	2.44	0.46
1:A:89:PHE:N	1:A:120:ASN:HD21	2.10	0.46
1:E:171:ASN:HD22	1:E:171:ASN:HA	1.61	0.46
1:A:28:LYS:HD2	1:E:278:LEU:HA	1.97	0.46
2:A:281:BOG:O6	1:B:32:LYS:HE2	2.12	0.46
1:B:135:ARG:NH2	1:B:227:PRO:HG3	2.31	0.46

Continued on next page...

Continued from previous page...

Atom-1	Atom-2	Interatomic distance (Å)	Clash overlap (Å)
1:C:208:HIS:CE1	1:C:210:ILE:HB	2.51	0.46
1:A:97:VAL:CG1	1:A:98:ALA:HB3	2.46	0.46
1:C:212:ASN:ND2	1:C:253:ASN:HD21	2.04	0.45
1:C:99:LYS:HA	1:C:100:ALA:HA	1.57	0.45
1:B:190:LYS:HZ1	2:B:285:BOG:H5	1.71	0.45
1:B:111:ARG:O	1:B:115:VAL:HG23	2.17	0.45
1:D:135:ARG:HH22	1:D:227:PRO:HG3	1.82	0.45
1:E:201:PHE:CD1	1:E:201:PHE:C	2.90	0.45
1:D:98:ALA:O	1:D:104:ILE:HG23	2.17	0.45
1:C:105:SER:HA	1:C:106:TRP:HA	1.68	0.44
1:D:93:VAL:HG13	1:D:96:LEU:HA	1.99	0.44
1:E:99:LYS:HD3	1:E:106:TRP:CE3	2.52	0.44
1:E:168:LEU:HD12	1:E:264:GLY:CA	2.48	0.44
1:A:94:LEU:HD12	1:A:269:VAL:HG23	1.98	0.44
1:B:190:LYS:NZ	2:B:285:BOG:C5	2.61	0.44
1:B:89:PHE:HA	1:B:92:SER:CB	2.47	0.44
1:E:135:ARG:NH2	1:E:227:PRO:HG3	2.32	0.44
1:D:229:SER:O	1:D:233:MET:HG2	2.17	0.44
1:C:146:LEU:HD11	1:C:234:THR:HB	2.00	0.44
1:A:24:GLY:O	1:A:27:LYS:HB3	2.18	0.43
1:C:25:LYS:HD2	1:C:28:LYS:HZ2	1.83	0.43
1:E:226:ALA:HA	1:E:227:PRO:HD3	1.83	0.43
1:E:265:GLY:HA3	2:E:310:BOG:H8'1	1.99	0.43
1:A:32:LYS:HA	1:E:278:LEU:HD13	1.99	0.43
1:E:227:PRO:HD2	1:E:230:PHE:HB2	2.00	0.43
1:D:106:TRP:CD2	1:D:110:VAL:HG21	2.53	0.43
1:D:95:ILE:HD12	1:D:99:LYS:HG3	2.00	0.43
1:E:213:MET:O	1:E:217:PRO:HG2	2.18	0.43
1:D:226:ALA:HA	1:D:227:PRO:HD3	1.79	0.43
2:B:284:BOG:H3'1	2:B:284:BOG:H6'2	1.79	0.43
1:A:101:SER:CB	1:A:102:GLY:CA	2.91	0.43
1:A:106:TRP:C	1:A:108:GLU:N	2.72	0.43
1:A:91:SER:OG	1:A:174:VAL:HG12	2.18	0.43
1:A:213:MET:O	1:A:217:PRO:HG2	2.19	0.43
1:A:97:VAL:HB	1:A:269:VAL:CG1	2.47	0.43
1:B:190:LYS:HZ1	2:B:285:BOG:C6	2.31	0.43
1:B:92:SER:HA	1:B:93:VAL:HA	1.84	0.42
1:C:104:ILE:HD11	1:C:108:GLU:HG3	2.00	0.42
1:C:95:ILE:HG23	1:C:96:LEU:N	2.34	0.42
2:B:282:BOG:H4'2	2:B:282:BOG:O1	2.19	0.42
1:C:109:LEU:HD13	1:C:109:LEU:O	2.19	0.42

Continued on next page...

Continued from previous page...

Atom-1	Atom-2	Interatomic distance (Å)	Clash overlap (Å)
1:D:93:VAL:O	1:D:93:VAL:HG22	2.19	0.42
1:E:216:VAL:HB	1:E:217:PRO:HD3	2.02	0.42
1:B:159:THR:HG22	2:B:284:BOG:H8'3	2.01	0.42
1:B:271:MET:HA	1:B:274:TRP:HE3	1.83	0.42
1:C:276:ILE:C	1:C:276:ILE:HD12	2.40	0.42
1:D:168:LEU:HD12	1:D:264:GLY:HA2	2.01	0.42
1:B:108:GLU:HA	1:B:111:ARG:HB3	2.00	0.42
1:B:90:THR:N	1:B:91:SER:CA	2.81	0.42
1:C:102:GLY:HA2	1:C:109:LEU:HG	2.01	0.42
1:C:94:LEU:HD12	1:C:95:ILE:N	2.35	0.42
2:D:281:BOG:H1'1	2:D:281:BOG:H2	1.70	0.42
1:B:201:PHE:CD1	1:B:201:PHE:C	2.93	0.42
1:B:96:LEU:HG	1:B:97:VAL:H	1.84	0.42
1:D:89:PHE:CD2	1:D:117:TYR:HD1	2.36	0.42
1:E:212:ASN:ND2	1:E:253:ASN:HD21	2.07	0.42
1:B:179:TRP:CH2	1:B:272:TRP:CD1	3.08	0.42
1:D:258:THR:O	1:D:262:ILE:HG13	2.18	0.42
1:A:196:LEU:N	1:A:197:PRO:CD	2.84	0.41
1:B:146:LEU:HD11	1:B:234:THR:HB	2.01	0.41
1:D:99:LYS:HB3	1:D:103:LYS:HE3	2.01	0.41
1:C:201:PHE:CD1	1:C:201:PHE:C	2.93	0.41
1:C:221:GLY:HA2	2:C:283:BOG:H4'1	2.01	0.41
1:A:185:ARG:CD	1:A:185:ARG:C	2.85	0.41
1:D:248:ASN:O	1:D:252:ASN:HB2	2.20	0.41
1:C:90:THR:HG21	1:C:208:HIS:NE2	2.36	0.41
1:D:253:ASN:O	1:D:256:PRO:HD2	2.20	0.41
1:B:102:GLY:C	1:B:104:ILE:H	2.24	0.41
1:E:130:ILE:O	1:E:134:THR:HG23	2.20	0.41
1:A:201:PHE:C	1:A:201:PHE:CD1	2.94	0.41
2:B:285:BOG:H8'2	3:B:355:HOH:O	2.20	0.41
1:C:103:LYS:NZ	1:C:108:GLU:HB3	2.35	0.41
1:A:243:ASP:N	1:A:243:ASP:OD1	2.54	0.41
1:B:36:LEU:CB	1:B:87:GLU:HG3	2.50	0.41
1:C:192:MET:HE1	2:C:281:BOG:H61	2.03	0.41
1:E:25:LYS:HD3	1:E:25:LYS:HA	1.88	0.41
1:E:196:LEU:N	1:E:197:PRO:CD	2.84	0.40
1:B:89:PHE:O	1:B:89:PHE:CD2	2.74	0.40
1:D:162:GLN:HG3	1:E:134:THR:O	2.22	0.40
1:E:27:LYS:HD2	1:E:27:LYS:HA	1.96	0.40

There are no symmetry-related clashes.

5.3 Torsion angles [i](#)

5.3.1 Protein backbone [i](#)

In the following table, the Percentiles column shows the percent Ramachandran outliers of the chain as a percentile score with respect to all X-ray entries followed by that with respect to entries of similar resolution.

The Analysed column shows the number of residues for which the backbone conformation was analysed, and the total number of residues.

Mol	Chain	Analysed	Favoured	Allowed	Outliers	Percentiles	
1	A	255/280 (91%)	241 (94%)	10 (4%)	4 (2%)	9	5
1	B	253/280 (90%)	237 (94%)	12 (5%)	4 (2%)	9	5
1	C	257/280 (92%)	243 (95%)	9 (4%)	5 (2%)	8	3
1	D	250/280 (89%)	236 (94%)	10 (4%)	4 (2%)	9	5
1	E	254/280 (91%)	251 (99%)	3 (1%)	0	100	100
All	All	1269/1400 (91%)	1208 (95%)	44 (4%)	17 (1%)	12	7

All (17) Ramachandran outliers are listed below:

Mol	Chain	Res	Type
1	B	89	PHE
1	B	92	SER
1	C	93	VAL
1	D	89	PHE
1	D	90	THR
1	A	99	LYS
1	B	95	ILE
1	C	25	LYS
1	A	106	TRP
1	C	101	SER
1	C	105	SER
1	A	95	ILE
1	B	106	TRP
1	C	103	LYS
1	D	102	GLY
1	D	96	LEU
1	A	93	VAL

5.3.2 Protein sidechains ⓘ

In the following table, the Percentiles column shows the percent sidechain outliers of the chain as a percentile score with respect to all X-ray entries followed by that with respect to entries of similar resolution.

The Analysed column shows the number of residues for which the sidechain conformation was analysed, and the total number of residues.

Mol	Chain	Analysed	Rotameric	Outliers	Percentiles	
1	A	205/226 (91%)	196 (96%)	9 (4%)	28	28
1	B	205/226 (91%)	195 (95%)	10 (5%)	25	23
1	C	208/226 (92%)	196 (94%)	12 (6%)	20	17
1	D	204/226 (90%)	193 (95%)	11 (5%)	22	20
1	E	206/226 (91%)	194 (94%)	12 (6%)	20	17
All	All	1028/1130 (91%)	974 (95%)	54 (5%)	22	20

All (54) residues with a non-rotameric sidechain are listed below:

Mol	Chain	Res	Type
1	A	48	PHE
1	A	50	PHE
1	A	103	LYS
1	A	168	LEU
1	A	171	ASN
1	A	201	PHE
1	A	204	SER
1	A	244	LEU
1	A	254	LEU
1	B	48	PHE
1	B	90	THR
1	B	91	SER
1	B	95	ILE
1	B	104	ILE
1	B	113	TRP
1	B	201	PHE
1	B	254	LEU
1	B	267	VAL
1	B	271	MET
1	C	48	PHE
1	C	50	PHE
1	C	93	VAL
1	C	94	LEU

Continued on next page...

Continued from previous page...

Mol	Chain	Res	Type
1	C	95	ILE
1	C	107	LYS
1	C	111	ARG
1	C	168	LEU
1	C	201	PHE
1	C	204	SER
1	C	227	PRO
1	C	254	LEU
1	D	48	PHE
1	D	50	PHE
1	D	59	HIS
1	D	90	THR
1	D	103	LYS
1	D	106	TRP
1	D	171	ASN
1	D	201	PHE
1	D	204	SER
1	D	244	LEU
1	D	254	LEU
1	E	33	SER
1	E	48	PHE
1	E	50	PHE
1	E	94	LEU
1	E	99	LYS
1	E	171	ASN
1	E	201	PHE
1	E	204	SER
1	E	228	GLU
1	E	244	LEU
1	E	254	LEU
1	E	278	LEU

Some sidechains can be flipped to improve hydrogen bonding and reduce clashes. All (21) such sidechains are listed below:

Mol	Chain	Res	Type
1	A	120	ASN
1	A	171	ASN
1	A	253	ASN
1	A	261	ASN
1	B	120	ASN
1	B	136	GLN
1	B	253	ASN

Continued on next page...

Continued from previous page...

Mol	Chain	Res	Type
1	B	261	ASN
1	C	120	ASN
1	C	253	ASN
1	C	261	ASN
1	D	120	ASN
1	D	171	ASN
1	D	253	ASN
1	D	261	ASN
1	E	112	ASN
1	E	120	ASN
1	E	136	GLN
1	E	171	ASN
1	E	253	ASN
1	E	261	ASN

5.3.3 RNA [i](#)

There are no RNA molecules in this entry.

5.4 Non-standard residues in protein, DNA, RNA chains [i](#)

There are no non-standard protein/DNA/RNA residues in this entry.

5.5 Carbohydrates [i](#)

There are no monosaccharides in this entry.

5.6 Ligand geometry [i](#)

16 ligands are modelled in this entry.

In the following table, the Counts columns list the number of bonds (or angles) for which Mogul statistics could be retrieved, the number of bonds (or angles) that are observed in the model and the number of bonds (or angles) that are defined in the Chemical Component Dictionary. The Link column lists molecule types, if any, to which the group is linked. The Z score for a bond length (or angle) is the number of standard deviations the observed value is removed from the expected value. A bond length (or angle) with $|Z| > 2$ is considered an outlier worth inspection. RMSZ is the root-mean-square of all Z scores of the bond lengths (or angles).

Mol	Type	Chain	Res	Link	Bond lengths			Bond angles		
					Counts	RMSZ	# Z > 2	Counts	RMSZ	# Z > 2
2	BOG	E	310	-	20,20,20	0.86	1 (5%)	25,25,25	2.49	13 (52%)
2	BOG	B	283	-	20,20,20	1.15	1 (5%)	25,25,25	2.87	12 (48%)
2	BOG	C	283	-	20,20,20	0.89	0	25,25,25	2.77	14 (56%)
2	BOG	C	282	-	20,20,20	1.00	3 (15%)	25,25,25	2.76	15 (60%)
2	BOG	B	310	-	20,20,20	0.86	0	25,25,25	2.62	12 (48%)
2	BOG	A	282	-	20,20,20	0.85	1 (5%)	25,25,25	2.43	12 (48%)
2	BOG	E	282	-	20,20,20	0.87	0	25,25,25	3.08	13 (52%)
2	BOG	B	284	-	20,20,20	1.32	1 (5%)	25,25,25	2.47	9 (36%)
2	BOG	A	281	-	20,20,20	2.87	2 (10%)	25,25,25	3.44	12 (48%)
2	BOG	B	281	-	20,20,20	0.87	0	25,25,25	3.01	13 (52%)
2	BOG	C	281	-	20,20,20	1.49	5 (25%)	25,25,25	2.85	12 (48%)
2	BOG	D	281	-	20,20,20	0.89	2 (10%)	25,25,25	2.29	8 (32%)
2	BOG	E	281	-	20,20,20	0.87	0	25,25,25	2.97	12 (48%)
2	BOG	B	285	-	20,20,20	0.94	1 (5%)	25,25,25	2.97	12 (48%)
2	BOG	D	310	-	20,20,20	0.89	1 (5%)	25,25,25	2.87	13 (52%)
2	BOG	B	282	-	20,20,20	0.92	0	25,25,25	3.06	16 (64%)

In the following table, the Chirals column lists the number of chiral outliers, the number of chiral centers analysed, the number of these observed in the model and the number defined in the Chemical Component Dictionary. Similar counts are reported in the Torsion and Rings columns. '-' means no outliers of that kind were identified.

Mol	Type	Chain	Res	Link	Chirals	Torsions	Rings
2	BOG	E	310	-	-	2/11/31/31	0/1/1/1
2	BOG	B	283	-	-	4/11/31/31	0/1/1/1
2	BOG	C	283	-	-	9/11/31/31	0/1/1/1
2	BOG	C	282	-	-	8/11/31/31	0/1/1/1
2	BOG	B	310	-	-	6/11/31/31	0/1/1/1
2	BOG	A	282	-	-	2/11/31/31	0/1/1/1
2	BOG	E	282	-	-	5/11/31/31	0/1/1/1
2	BOG	B	284	-	-	7/11/31/31	0/1/1/1
2	BOG	A	281	-	-	1/11/31/31	0/1/1/1
2	BOG	B	281	-	-	9/11/31/31	0/1/1/1
2	BOG	C	281	-	-	7/11/31/31	0/1/1/1
2	BOG	D	281	-	-	8/11/31/31	0/1/1/1
2	BOG	E	281	-	-	4/11/31/31	0/1/1/1

Continued on next page...

Continued from previous page...

Mol	Type	Chain	Res	Link	Chirals	Torsions	Rings
2	BOG	B	285	-	-	8/11/31/31	0/1/1/1
2	BOG	D	310	-	-	3/11/31/31	0/1/1/1
2	BOG	B	282	-	-	8/11/31/31	0/1/1/1

All (18) bond length outliers are listed below:

Mol	Chain	Res	Type	Atoms	Z	Observed(Å)	Ideal(Å)
2	A	281	BOG	C6-C5	-11.52	1.13	1.51
2	B	284	BOG	O2-C2	4.50	1.53	1.43
2	B	283	BOG	C4-C3	4.34	1.63	1.52
2	A	281	BOG	O2-C2	-4.30	1.32	1.43
2	C	281	BOG	O5-C1	3.81	1.51	1.41
2	C	281	BOG	O2-C2	-2.70	1.36	1.43
2	C	281	BOG	O4-C4	-2.58	1.36	1.43
2	C	282	BOG	O2-C2	-2.44	1.37	1.43
2	C	281	BOG	C1-C2	2.41	1.59	1.52
2	C	282	BOG	O3-C3	-2.31	1.37	1.43
2	C	282	BOG	O4-C4	-2.21	1.37	1.43
2	D	281	BOG	O2-C2	-2.14	1.37	1.43
2	D	281	BOG	O4-C4	-2.13	1.38	1.43
2	E	310	BOG	O2-C2	-2.10	1.38	1.43
2	B	285	BOG	O2-C2	-2.09	1.38	1.43
2	C	281	BOG	O3-C3	-2.07	1.38	1.43
2	D	310	BOG	O2-C2	-2.05	1.38	1.43
2	A	282	BOG	O2-C2	-2.03	1.38	1.43

All (198) bond angle outliers are listed below:

Mol	Chain	Res	Type	Atoms	Z	Observed(°)	Ideal(°)
2	A	281	BOG	O6-C6-C5	11.04	149.16	111.29
2	D	310	BOG	O1-C1-C2	7.44	119.92	108.30
2	E	281	BOG	O1-C1-C2	7.40	119.86	108.30
2	E	282	BOG	O1-C1-C2	7.10	119.38	108.30
2	B	283	BOG	C4-C3-C2	6.99	123.02	110.82
2	C	283	BOG	O1-C1-C2	6.57	118.56	108.30
2	B	281	BOG	O1-C1-C2	6.34	118.21	108.30
2	B	285	BOG	O5-C5-C6	6.28	122.05	106.44
2	C	281	BOG	O1-C1-C2	6.27	118.09	108.30
2	B	282	BOG	O5-C5-C6	6.10	121.59	106.44
2	B	310	BOG	O1-C1-C2	5.97	117.63	108.30
2	B	283	BOG	O1-C1-C2	5.94	117.58	108.30

Continued on next page...

Continued from previous page...

Mol	Chain	Res	Type	Atoms	Z	Observed(°)	Ideal(°)
2	B	285	BOG	O1-C1-C2	5.94	117.58	108.30
2	E	310	BOG	O1-C1-C2	5.83	117.40	108.30
2	C	282	BOG	O1-C1-C2	5.79	117.35	108.30
2	B	285	BOG	O5-C1-O1	5.66	123.39	109.97
2	B	281	BOG	O5-C5-C6	5.64	120.45	106.44
2	B	282	BOG	O1-C1-C2	5.58	117.01	108.30
2	B	284	BOG	O5-C5-C6	5.37	119.78	106.44
2	E	282	BOG	O5-C5-C6	5.32	119.67	106.44
2	A	281	BOG	O1-C1-C2	5.31	116.60	108.30
2	C	283	BOG	O5-C5-C6	5.20	119.36	106.44
2	C	282	BOG	O5-C5-C6	5.12	119.17	106.44
2	A	281	BOG	C1'-O1-C1	4.99	122.12	113.84
2	A	282	BOG	O1-C1-C2	4.84	115.85	108.30
2	B	283	BOG	O5-C5-C6	4.79	118.33	106.44
2	C	281	BOG	C6-C5-C4	4.77	124.19	113.00
2	D	281	BOG	O2-C2-C3	4.76	121.36	110.35
2	B	282	BOG	O4-C4-C5	4.69	120.95	109.30
2	A	281	BOG	C6-C5-C4	4.69	123.98	113.00
2	B	284	BOG	C1'-O1-C1	4.68	121.60	113.84
2	B	285	BOG	C1'-O1-C1	4.65	121.56	113.84
2	A	282	BOG	C1'-O1-C1	4.57	121.42	113.84
2	C	281	BOG	C1-C2-C3	4.55	119.48	110.00
2	C	281	BOG	O3-C3-C2	4.54	120.85	110.35
2	C	281	BOG	O4-C4-C5	4.54	120.58	109.30
2	E	281	BOG	O5-C5-C6	4.50	117.63	106.44
2	B	281	BOG	O4-C4-C3	4.34	120.38	110.35
2	C	282	BOG	O3-C3-C2	4.32	120.33	110.35
2	E	282	BOG	O4-C4-C5	4.30	119.98	109.30
2	E	282	BOG	O5-C1-O1	4.28	120.10	109.97
2	B	281	BOG	C1'-O1-C1	4.25	120.88	113.84
2	E	282	BOG	O3-C3-C2	4.23	120.13	110.35
2	C	281	BOG	C1'-O1-C1	4.21	120.82	113.84
2	B	284	BOG	O5-C1-O1	4.19	119.90	109.97
2	B	284	BOG	O4-C4-C5	4.16	119.63	109.30
2	D	281	BOG	O5-C1-O1	4.15	119.81	109.97
2	C	282	BOG	O3-C3-C4	4.15	119.94	110.35
2	D	281	BOG	O5-C5-C6	4.14	116.73	106.44
2	B	282	BOG	C1-C2-C3	4.14	118.62	110.00
2	A	281	BOG	O4-C4-C5	4.12	119.53	109.30
2	D	310	BOG	O5-C5-C6	4.12	116.67	106.44
2	B	310	BOG	C1'-O1-C1	4.11	120.66	113.84
2	B	282	BOG	O4-C4-C3	4.11	119.85	110.35

Continued on next page...

Continued from previous page...

Mol	Chain	Res	Type	Atoms	Z	Observed(°)	Ideal(°)
2	B	281	BOG	O3-C3-C2	4.10	119.82	110.35
2	E	281	BOG	O2-C2-C3	4.08	119.78	110.35
2	C	281	BOG	O5-C5-C6	4.05	116.50	106.44
2	B	310	BOG	O5-C5-C6	4.03	116.47	106.44
2	E	282	BOG	O2-C2-C3	4.03	119.67	110.35
2	B	281	BOG	O4-C4-C5	4.03	119.30	109.30
2	D	310	BOG	C1'-O1-C1	4.02	120.50	113.84
2	D	310	BOG	O5-C1-O1	4.00	119.46	109.97
2	E	281	BOG	O2-C2-C1	3.99	119.75	110.05
2	E	281	BOG	O4-C4-C5	3.99	119.20	109.30
2	D	281	BOG	O3-C3-C2	3.96	119.51	110.35
2	E	281	BOG	C1'-O1-C1	3.95	120.39	113.84
2	E	282	BOG	O2-C2-C1	3.95	119.64	110.05
2	E	310	BOG	C1'-O1-C1	3.94	120.38	113.84
2	E	282	BOG	O4-C4-C3	3.94	119.46	110.35
2	B	281	BOG	O3-C3-C4	3.94	119.45	110.35
2	A	281	BOG	O2-C2-C3	-3.93	101.26	110.35
2	E	281	BOG	O5-C1-O1	3.92	119.27	109.97
2	D	310	BOG	O2-C2-C3	3.92	119.41	110.35
2	C	282	BOG	O5-C1-O1	3.91	119.24	109.97
2	A	282	BOG	O5-C5-C6	3.91	116.16	106.44
2	D	310	BOG	O2-C2-C1	3.91	119.54	110.05
2	B	281	BOG	O2-C2-C3	3.91	119.38	110.35
2	E	282	BOG	O3-C3-C4	3.90	119.36	110.35
2	C	282	BOG	O2-C2-C3	3.88	119.32	110.35
2	B	282	BOG	O5-C1-O1	3.86	119.11	109.97
2	E	281	BOG	O3-C3-C2	3.85	119.26	110.35
2	C	283	BOG	O4-C4-C5	3.85	118.86	109.30
2	B	281	BOG	O5-C1-O1	3.85	119.08	109.97
2	E	282	BOG	C1'-O1-C1	3.81	120.15	113.84
2	B	310	BOG	O4-C4-C5	3.79	118.70	109.30
2	B	283	BOG	O5-C1-O1	3.73	118.81	109.97
2	B	285	BOG	O2-C2-C3	3.70	118.91	110.35
2	B	281	BOG	O2-C2-C1	3.69	119.02	110.05
2	E	281	BOG	O3-C3-C4	3.69	118.89	110.35
2	B	282	BOG	C1'-O1-C1	3.69	119.96	113.84
2	E	281	BOG	O4-C4-C3	3.67	118.83	110.35
2	B	283	BOG	C6-C5-C4	-3.67	104.42	113.00
2	B	285	BOG	O4-C4-C3	3.66	118.81	110.35
2	C	282	BOG	C1'-O1-C1	3.65	119.89	113.84
2	B	283	BOG	O2-C2-C1	3.65	118.90	110.05
2	B	284	BOG	O5-C1-C2	-3.64	102.64	110.35

Continued on next page...

Continued from previous page...

Mol	Chain	Res	Type	Atoms	Z	Observed(°)	Ideal(°)
2	A	282	BOG	O4-C4-C5	3.64	118.33	109.30
2	E	310	BOG	O4-C4-C5	3.62	118.29	109.30
2	A	281	BOG	O4-C4-C3	3.58	118.62	110.35
2	A	281	BOG	O3-C3-C2	3.56	118.57	110.35
2	B	310	BOG	O5-C1-O1	3.55	118.39	109.97
2	B	284	BOG	O2-C2-C3	-3.54	102.17	110.35
2	B	285	BOG	O2-C2-C1	3.52	118.59	110.05
2	D	310	BOG	O3-C3-C2	3.50	118.45	110.35
2	B	282	BOG	O3-C3-C2	3.49	118.43	110.35
2	B	310	BOG	O4-C4-C3	3.46	118.34	110.35
2	D	281	BOG	O3-C3-C4	3.43	118.28	110.35
2	C	283	BOG	O3-C3-C2	3.41	118.22	110.35
2	A	281	BOG	O3-C3-C4	3.39	118.19	110.35
2	E	310	BOG	O5-C5-C6	3.39	114.87	106.44
2	B	284	BOG	C1-C2-C3	3.39	117.05	110.00
2	A	281	BOG	O5-C1-O1	3.38	117.97	109.97
2	C	283	BOG	O2-C2-C3	3.35	118.10	110.35
2	C	283	BOG	O5-C1-O1	3.35	117.91	109.97
2	C	283	BOG	O4-C4-C3	3.35	118.10	110.35
2	D	281	BOG	O4-C4-C5	3.35	117.61	109.30
2	C	283	BOG	O3-C3-C4	3.31	117.99	110.35
2	B	282	BOG	C6-C5-C4	3.29	120.72	113.00
2	B	310	BOG	O2-C2-C3	3.28	117.93	110.35
2	C	283	BOG	O2-C2-C1	3.25	117.93	110.05
2	A	282	BOG	O4-C4-C3	3.24	117.85	110.35
2	B	282	BOG	O3-C3-C4	3.24	117.84	110.35
2	C	283	BOG	C6-C5-C4	3.21	120.52	113.00
2	B	285	BOG	O3-C3-C4	3.20	117.75	110.35
2	D	310	BOG	C3-C4-C5	3.20	115.94	110.24
2	D	281	BOG	O4-C4-C3	3.20	117.74	110.35
2	B	310	BOG	O3-C3-C4	3.16	117.64	110.35
2	C	283	BOG	C1'-O1-C1	3.13	119.03	113.84
2	B	283	BOG	O4-C4-C5	3.11	117.03	109.30
2	A	282	BOG	O3-C3-C2	3.10	117.53	110.35
2	B	285	BOG	O3-C3-C2	3.07	117.45	110.35
2	A	282	BOG	O3-C3-C4	3.06	117.43	110.35
2	D	310	BOG	O3-C3-C4	3.06	117.42	110.35
2	A	282	BOG	O2-C2-C3	3.05	117.41	110.35
2	D	310	BOG	O4-C4-C3	3.05	117.39	110.35
2	E	310	BOG	O4-C4-C3	3.04	117.38	110.35
2	B	310	BOG	O2-C2-C1	3.03	117.42	110.05
2	C	282	BOG	O4-C4-C5	3.00	116.75	109.30

Continued on next page...

Continued from previous page...

Mol	Chain	Res	Type	Atoms	Z	Observed(°)	Ideal(°)
2	D	310	BOG	O4-C4-C5	3.00	116.74	109.30
2	C	281	BOG	O4-C4-C3	2.99	117.27	110.35
2	D	281	BOG	O1-C1'-C2'	2.96	119.95	109.56
2	B	283	BOG	O3-C3-C2	2.94	117.14	110.35
2	A	282	BOG	O2-C2-C1	2.91	117.11	110.05
2	A	282	BOG	O5-C1-O1	2.88	116.79	109.97
2	B	283	BOG	C1'-O1-C1	2.85	118.57	113.84
2	E	310	BOG	C4-C3-C2	2.85	115.80	110.82
2	E	310	BOG	O2-C2-C3	2.83	116.89	110.35
2	E	310	BOG	O2-C2-C1	2.83	116.91	110.05
2	B	285	BOG	O4-C4-C5	2.82	116.30	109.30
2	E	310	BOG	C3-C4-C5	2.80	115.24	110.24
2	E	310	BOG	C1-C2-C3	2.76	115.75	110.00
2	B	282	BOG	O2-C2-C3	2.76	116.73	110.35
2	E	281	BOG	C6-C5-C4	2.73	119.41	113.00
2	E	310	BOG	O5-C1-O1	2.72	116.40	109.97
2	E	310	BOG	O3-C3-C2	2.70	116.59	110.35
2	C	281	BOG	C3-C4-C5	-2.69	105.43	110.24
2	C	281	BOG	O5-C1-O1	2.67	116.30	109.97
2	B	310	BOG	O3-C3-C2	2.66	116.50	110.35
2	E	282	BOG	O1-C1'-C2'	2.65	118.85	109.56
2	E	310	BOG	O1-C1'-C2'	2.64	118.83	109.56
2	C	282	BOG	C6-C5-C4	2.61	119.13	113.00
2	E	281	BOG	O1-C1'-C2'	2.61	118.70	109.56
2	B	282	BOG	O5-C5-C4	-2.60	104.97	109.69
2	E	282	BOG	C6-C5-C4	2.56	119.00	113.00
2	B	283	BOG	O2-C2-C3	2.54	116.22	110.35
2	B	310	BOG	C6-C5-C4	2.50	118.85	113.00
2	C	283	BOG	C1-O5-C5	-2.49	108.81	113.69
2	B	281	BOG	O1-C1'-C2'	2.44	118.10	109.56
2	B	284	BOG	C6-C5-C4	2.43	118.70	113.00
2	B	282	BOG	O2-C2-C1	2.42	115.93	110.05
2	B	283	BOG	C1-O5-C5	-2.41	108.95	113.69
2	B	282	BOG	C1-O5-C5	-2.41	108.96	113.69
2	B	283	BOG	O3-C3-C4	2.39	115.88	110.35
2	C	281	BOG	O1-C1'-C2'	2.39	117.93	109.56
2	B	281	BOG	C6-C5-C4	2.38	118.59	113.00
2	C	282	BOG	C4-C3-C2	2.38	114.98	110.82
2	C	282	BOG	O4-C4-C3	2.32	115.72	110.35
2	D	310	BOG	O5-C5-C4	2.32	113.91	109.69
2	B	282	BOG	O1-C1'-C2'	2.32	117.69	109.56
2	B	285	BOG	O1-C1'-C2'	2.31	117.65	109.56

Continued on next page...

Continued from previous page...

Mol	Chain	Res	Type	Atoms	Z	Observed(°)	Ideal(°)
2	D	310	BOG	O1-C1'-C2'	2.27	117.51	109.56
2	A	281	BOG	O1-C1'-C2'	2.26	117.49	109.56
2	C	282	BOG	C1-O5-C5	-2.23	109.31	113.69
2	C	281	BOG	O3-C3-C4	2.20	115.44	110.35
2	A	282	BOG	O1-C1'-C2'	2.20	117.26	109.56
2	B	281	BOG	C1-O5-C5	-2.19	109.39	113.69
2	C	283	BOG	O1-C1'-C2'	2.18	117.22	109.56
2	C	282	BOG	O5-C1-C2	-2.17	105.75	110.35
2	B	284	BOG	O3-C3-C4	2.16	115.35	110.35
2	A	282	BOG	C1-C2-C3	2.14	114.46	110.00
2	C	282	BOG	O1-C1'-C2'	2.10	116.93	109.56
2	C	282	BOG	O2-C2-C1	2.09	115.12	110.05
2	A	281	BOG	C1-C2-C3	2.07	114.32	110.00
2	B	282	BOG	O5-C1-C2	2.07	114.74	110.35
2	C	283	BOG	O6-C6-C5	2.07	118.40	111.29
2	B	310	BOG	O1-C1'-C2'	2.07	116.81	109.56
2	E	282	BOG	C1-O5-C5	-2.01	109.74	113.69
2	B	285	BOG	C1-O5-C5	-2.01	109.74	113.69

There are no chirality outliers.

All (91) torsion outliers are listed below:

Mol	Chain	Res	Type	Atoms
2	B	283	BOG	C2'-C1'-O1-C1
2	C	283	BOG	C2-C1-O1-C1'
2	C	282	BOG	C2-C1-O1-C1'
2	B	310	BOG	C2-C1-O1-C1'
2	A	282	BOG	C2'-C1'-O1-C1
2	D	281	BOG	C2-C1-O1-C1'
2	D	281	BOG	C2'-C1'-O1-C1
2	E	282	BOG	C2-C1-O1-C1'
2	B	284	BOG	O5-C1-O1-C1'
2	B	281	BOG	C2'-C1'-O1-C1
2	C	281	BOG	C2-C1-O1-C1'
2	C	281	BOG	O5-C1-O1-C1'
2	D	310	BOG	C2-C1-O1-C1'
2	D	310	BOG	O5-C1-O1-C1'
2	E	281	BOG	O5-C1-O1-C1'
2	E	281	BOG	C2'-C1'-O1-C1
2	B	285	BOG	O5-C1-O1-C1'
2	B	285	BOG	C2'-C1'-O1-C1
2	B	282	BOG	O5-C1-O1-C1'

Continued on next page...

Continued from previous page...

Mol	Chain	Res	Type	Atoms
2	E	282	BOG	C1'-C2'-C3'-C4'
2	B	310	BOG	C1'-C2'-C3'-C4'
2	C	281	BOG	O5-C5-C6-O6
2	B	284	BOG	C3'-C4'-C5'-C6'
2	D	310	BOG	O1-C1'-C2'-C3'
2	C	283	BOG	O5-C1-O1-C1'
2	D	281	BOG	O5-C5-C6-O6
2	C	282	BOG	C4-C5-C6-O6
2	C	281	BOG	C2'-C3'-C4'-C5'
2	B	282	BOG	O5-C5-C6-O6
2	D	281	BOG	O1-C1'-C2'-C3'
2	C	281	BOG	C4'-C5'-C6'-C7'
2	C	283	BOG	C4-C5-C6-O6
2	C	281	BOG	O1-C1'-C2'-C3'
2	B	310	BOG	C4-C5-C6-O6
2	C	282	BOG	O5-C1-O1-C1'
2	C	282	BOG	O1-C1'-C2'-C3'
2	E	282	BOG	O1-C1'-C2'-C3'
2	C	283	BOG	O1-C1'-C2'-C3'
2	B	282	BOG	C3'-C4'-C5'-C6'
2	E	282	BOG	C2'-C3'-C4'-C5'
2	B	281	BOG	C2'-C3'-C4'-C5'
2	B	285	BOG	O5-C5-C6-O6
2	C	282	BOG	C2'-C1'-O1-C1
2	B	282	BOG	C4'-C5'-C6'-C7'
2	B	282	BOG	O1-C1'-C2'-C3'
2	B	285	BOG	C1'-C2'-C3'-C4'
2	E	281	BOG	C3'-C4'-C5'-C6'
2	C	283	BOG	C1'-C2'-C3'-C4'
2	D	281	BOG	C1'-C2'-C3'-C4'
2	B	284	BOG	O1-C1'-C2'-C3'
2	E	282	BOG	O5-C5-C6-O6
2	B	282	BOG	C2'-C3'-C4'-C5'
2	A	281	BOG	O1-C1'-C2'-C3'
2	B	281	BOG	O1-C1'-C2'-C3'
2	B	284	BOG	O5-C5-C6-O6
2	B	282	BOG	C2-C1-O1-C1'
2	B	283	BOG	C2'-C3'-C4'-C5'
2	E	281	BOG	C1'-C2'-C3'-C4'
2	B	284	BOG	C2'-C3'-C4'-C5'
2	D	281	BOG	C4'-C5'-C6'-C7'
2	B	283	BOG	O1-C1'-C2'-C3'

Continued on next page...

Continued from previous page...

Mol	Chain	Res	Type	Atoms
2	B	284	BOG	C1'-C2'-C3'-C4'
2	E	310	BOG	C1'-C2'-C3'-C4'
2	B	281	BOG	O5-C1-O1-C1'
2	B	281	BOG	C4'-C5'-C6'-C7'
2	B	285	BOG	C5'-C6'-C7'-C8'
2	B	281	BOG	O5-C5-C6-O6
2	C	282	BOG	C3'-C4'-C5'-C6'
2	B	281	BOG	C5'-C6'-C7'-C8'
2	C	283	BOG	C3'-C4'-C5'-C6'
2	B	285	BOG	C4'-C5'-C6'-C7'
2	B	285	BOG	C3'-C4'-C5'-C6'
2	C	283	BOG	C2'-C3'-C4'-C5'
2	D	281	BOG	C4-C5-C6-O6
2	D	281	BOG	C3'-C4'-C5'-C6'
2	C	283	BOG	C4'-C5'-C6'-C7'
2	C	281	BOG	C2'-C1'-O1-C1
2	C	282	BOG	C4'-C5'-C6'-C7'
2	B	281	BOG	C3'-C4'-C5'-C6'
2	B	284	BOG	C5'-C6'-C7'-C8'
2	C	282	BOG	C5'-C6'-C7'-C8'
2	B	310	BOG	C2'-C3'-C4'-C5'
2	E	310	BOG	C2'-C3'-C4'-C5'
2	B	283	BOG	C4'-C5'-C6'-C7'
2	B	281	BOG	C1'-C2'-C3'-C4'
2	B	282	BOG	C5'-C6'-C7'-C8'
2	B	310	BOG	O5-C5-C6-O6
2	B	285	BOG	O1-C1'-C2'-C3'
2	A	282	BOG	C4-C5-C6-O6
2	C	283	BOG	C5'-C6'-C7'-C8'
2	B	310	BOG	C2'-C1'-O1-C1

There are no ring outliers.

14 monomers are involved in 62 short contacts:

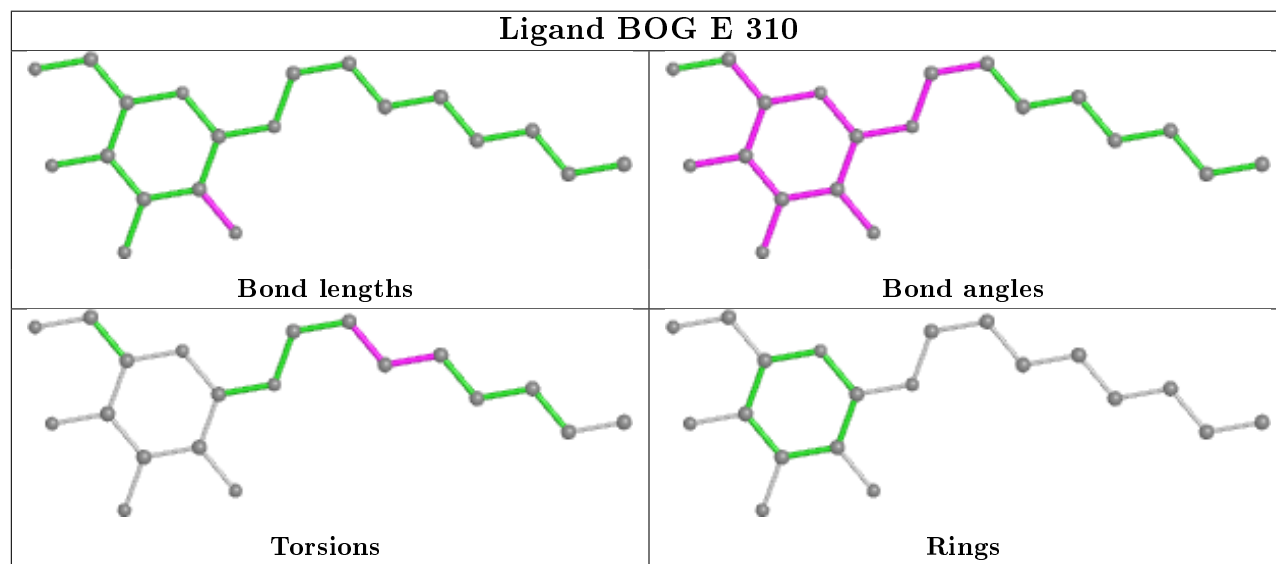
Mol	Chain	Res	Type	Clashes	Symm-Clashes
2	E	310	BOG	2	0
2	B	283	BOG	5	0
2	C	283	BOG	4	0
2	C	282	BOG	3	0
2	B	310	BOG	4	0
2	E	282	BOG	1	0
2	B	284	BOG	6	0

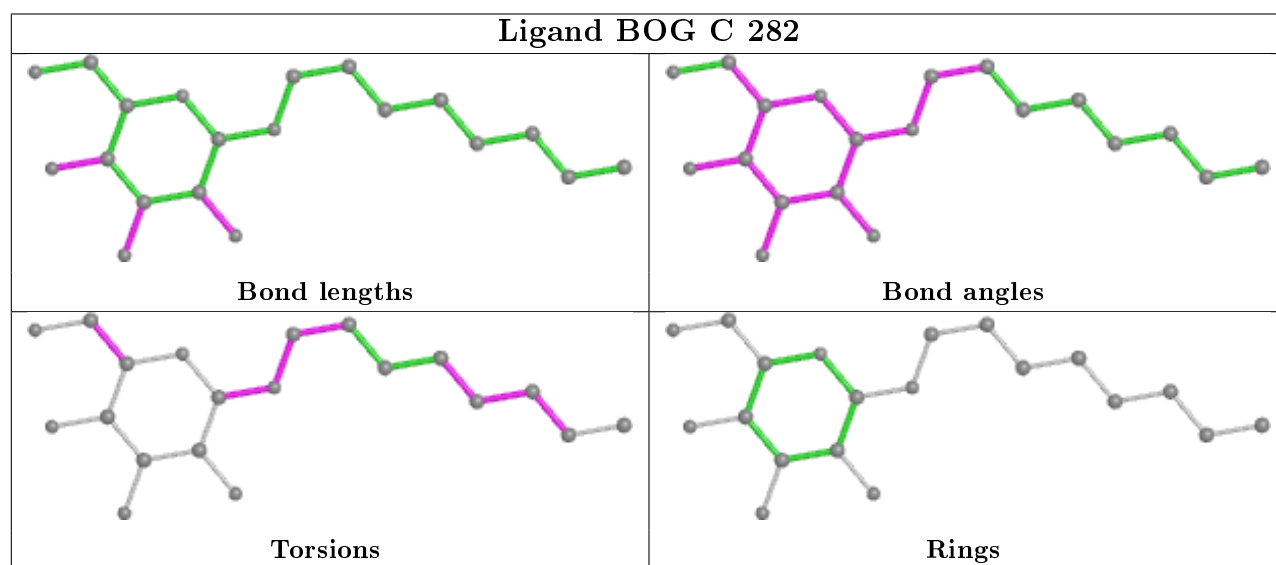
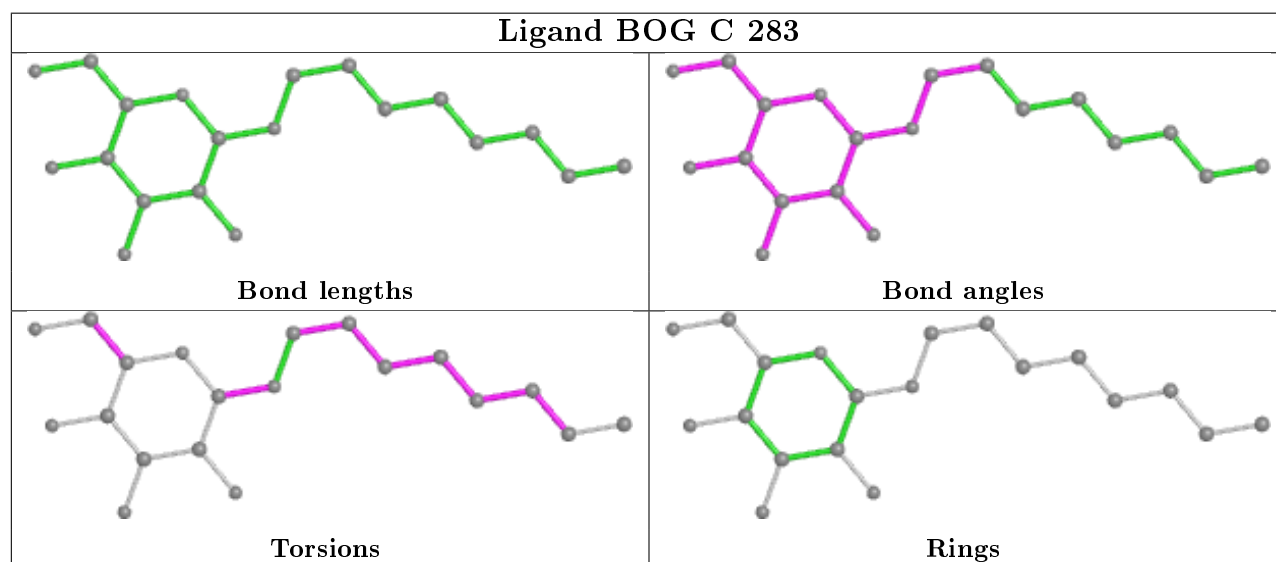
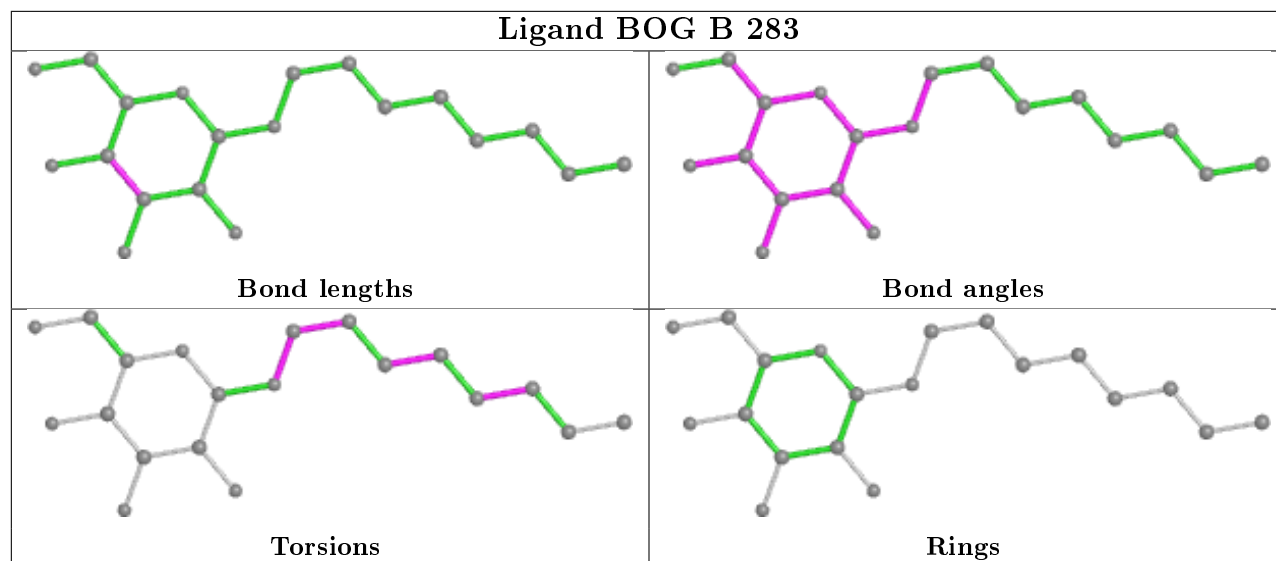
Continued on next page...

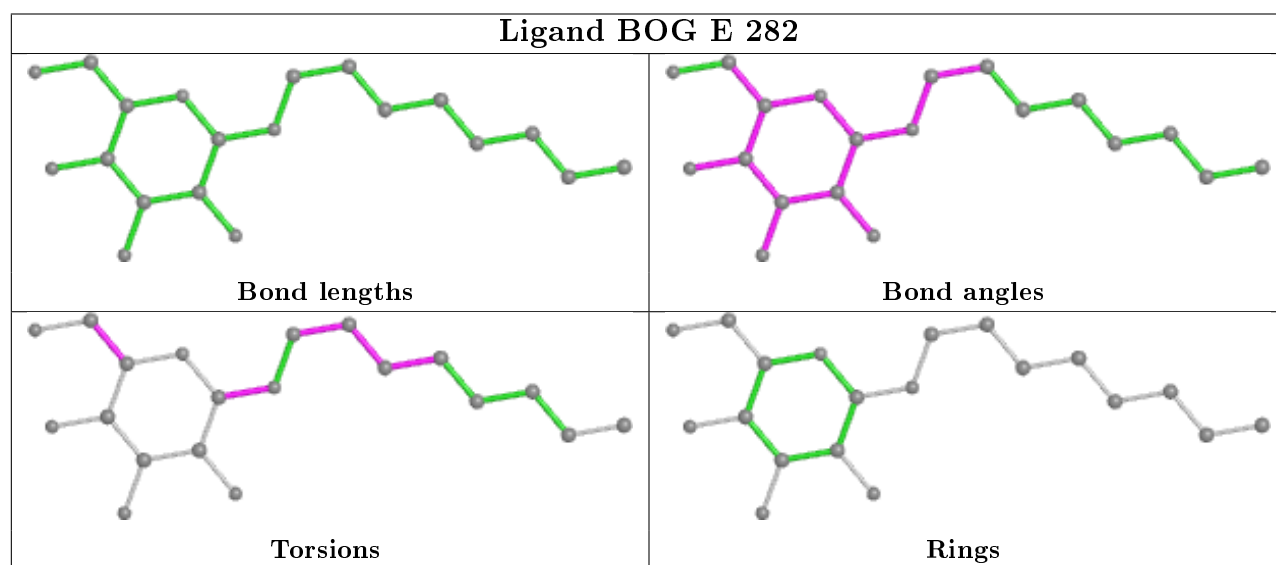
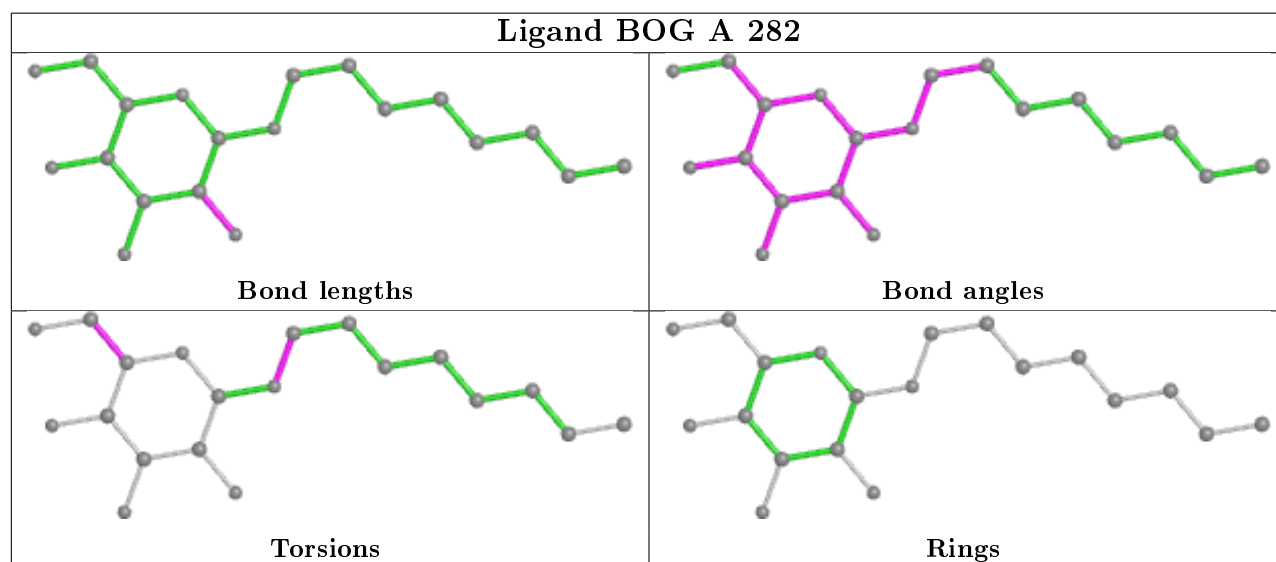
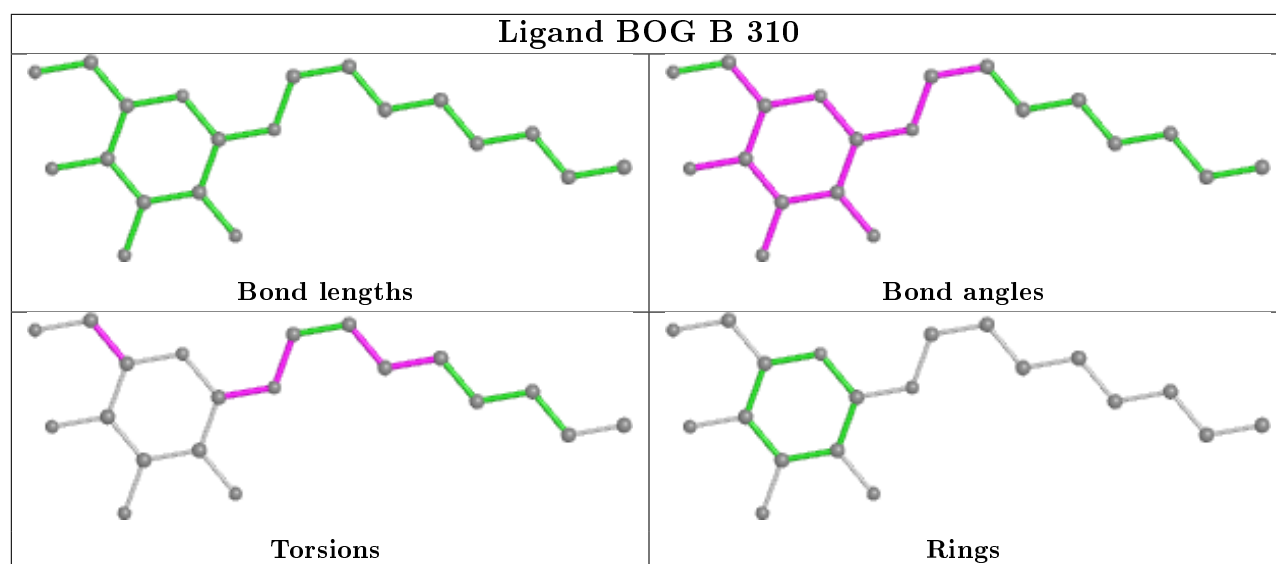
Continued from previous page...

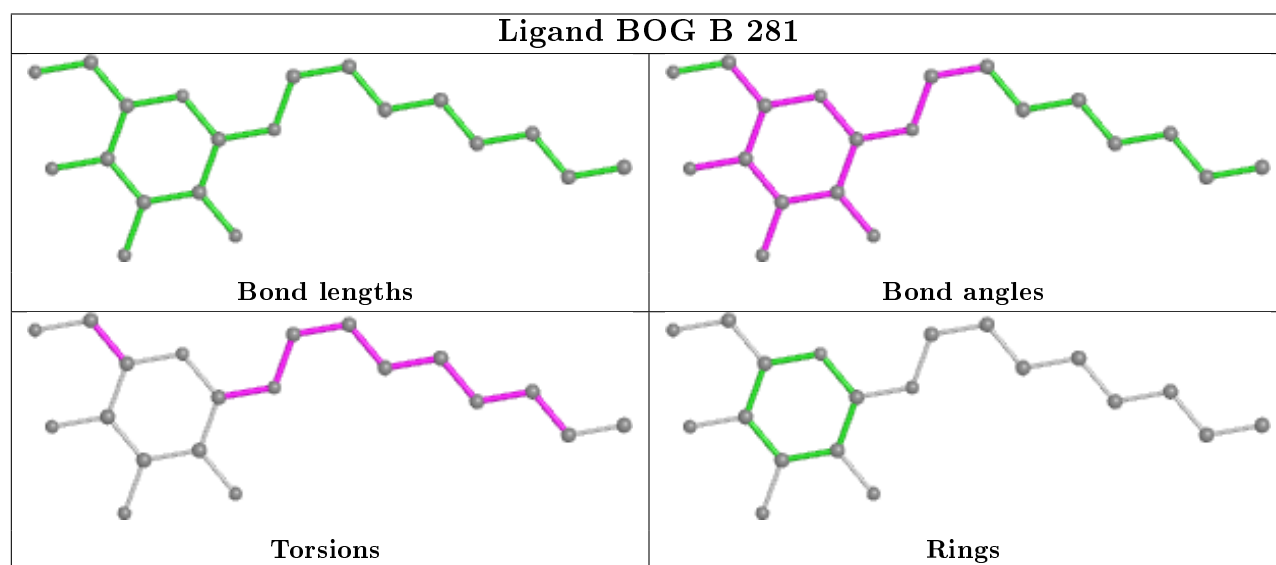
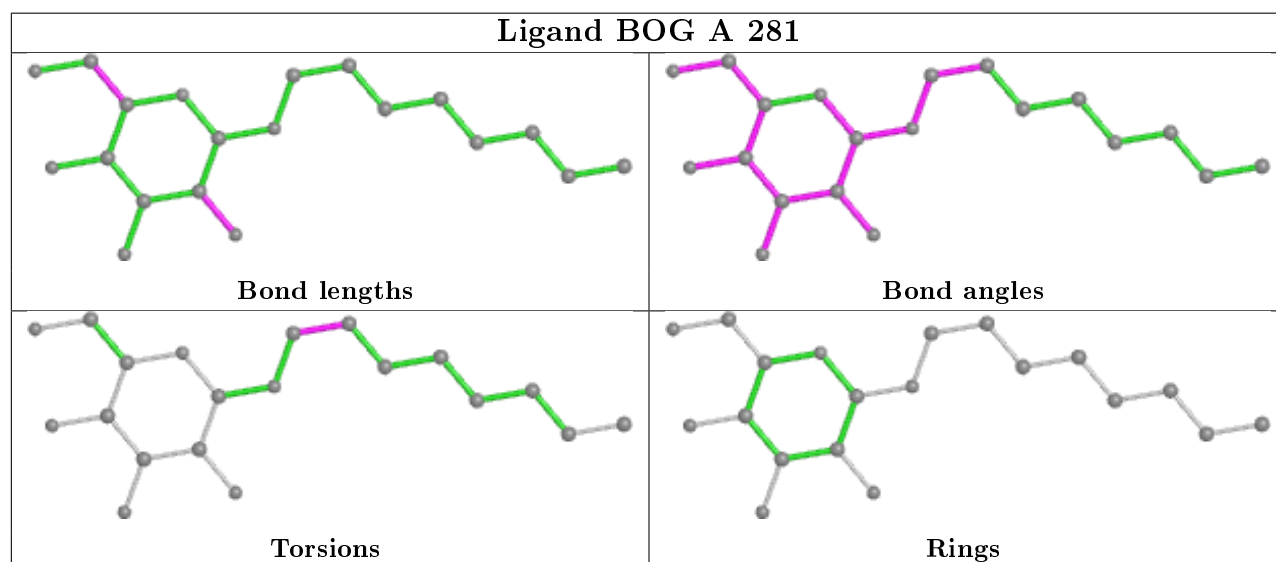
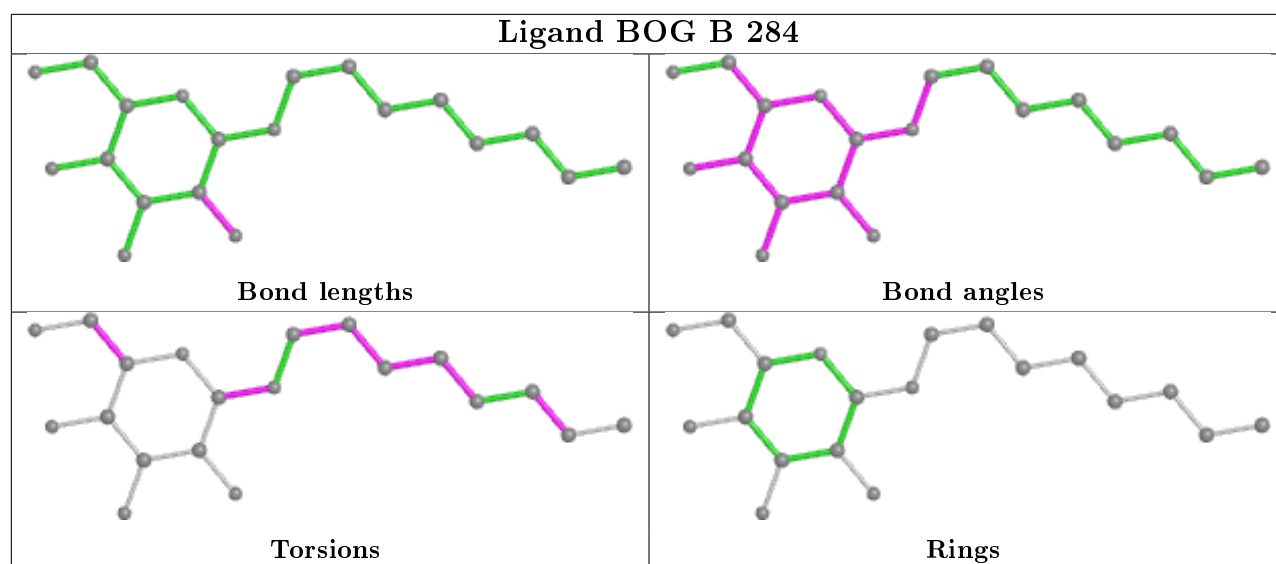
Mol	Chain	Res	Type	Clashes	Symm-Clashes
2	A	281	BOG	5	0
2	B	281	BOG	4	0
2	C	281	BOG	2	0
2	D	281	BOG	8	0
2	B	285	BOG	15	0
2	D	310	BOG	1	0
2	B	282	BOG	4	0

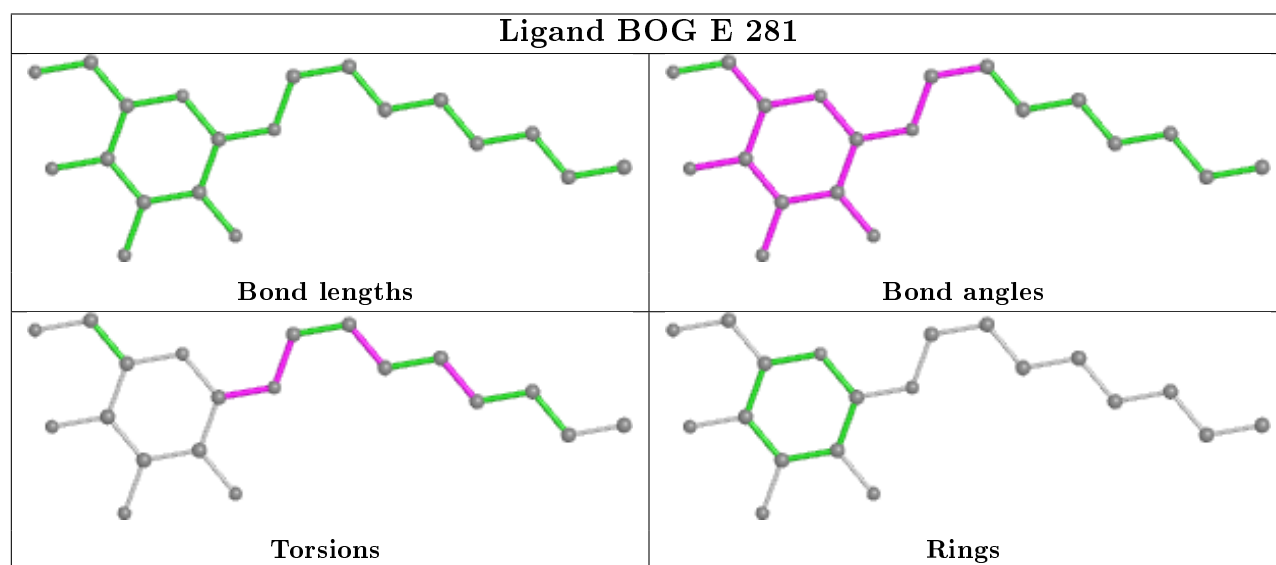
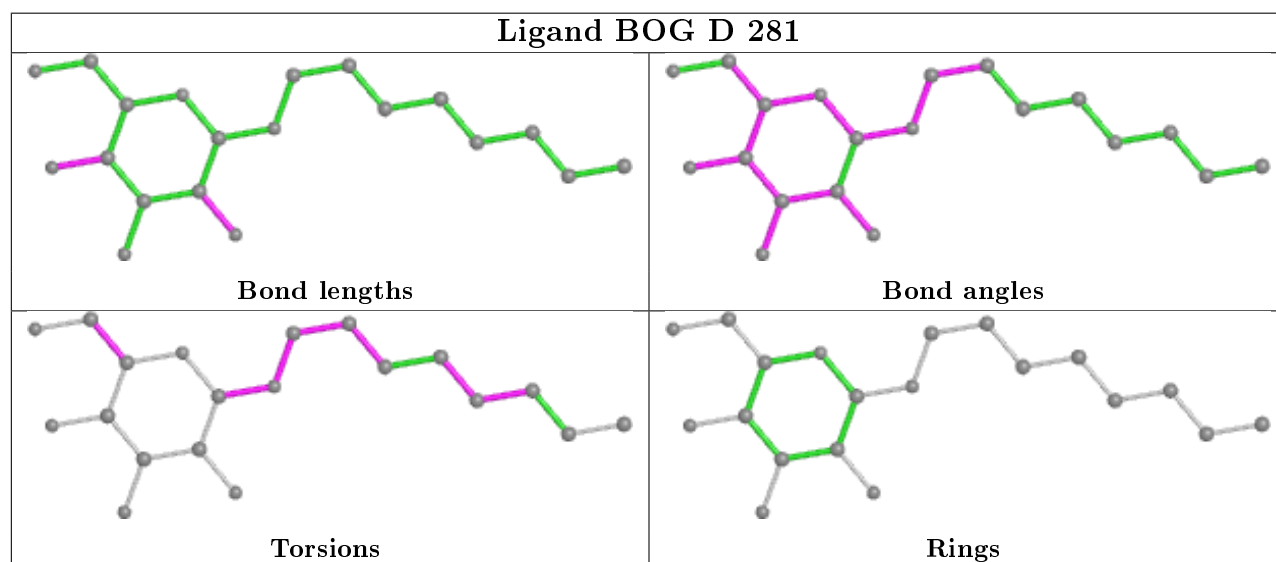
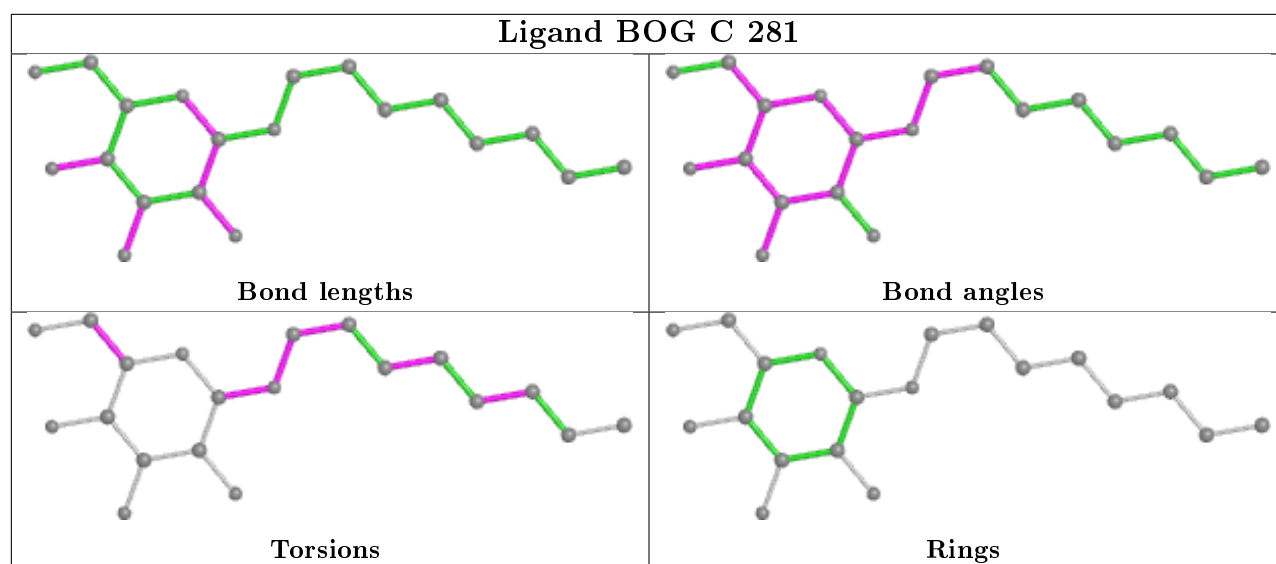
The following is a two-dimensional graphical depiction of Mogul quality analysis of bond lengths, bond angles, torsion angles, and ring geometry for all instances of the Ligand of Interest. In addition, ligands with molecular weight > 250 and outliers as shown on the validation Tables will also be included. For torsion angles, if less than 5% of the Mogul distribution of torsion angles is within 10 degrees of the torsion angle in question, then that torsion angle is considered an outlier. Any bond that is central to one or more torsion angles identified as an outlier by Mogul will be highlighted in the graph. For rings, the root-mean-square deviation (RMSD) between the ring in question and similar rings identified by Mogul is calculated over all ring torsion angles. If the average RMSD is greater than 60 degrees and the minimal RMSD between the ring in question and any Mogul-identified rings is also greater than 60 degrees, then that ring is considered an outlier. The outliers are highlighted in purple. The color gray indicates Mogul did not find sufficient equivalents in the CSD to analyse the geometry.

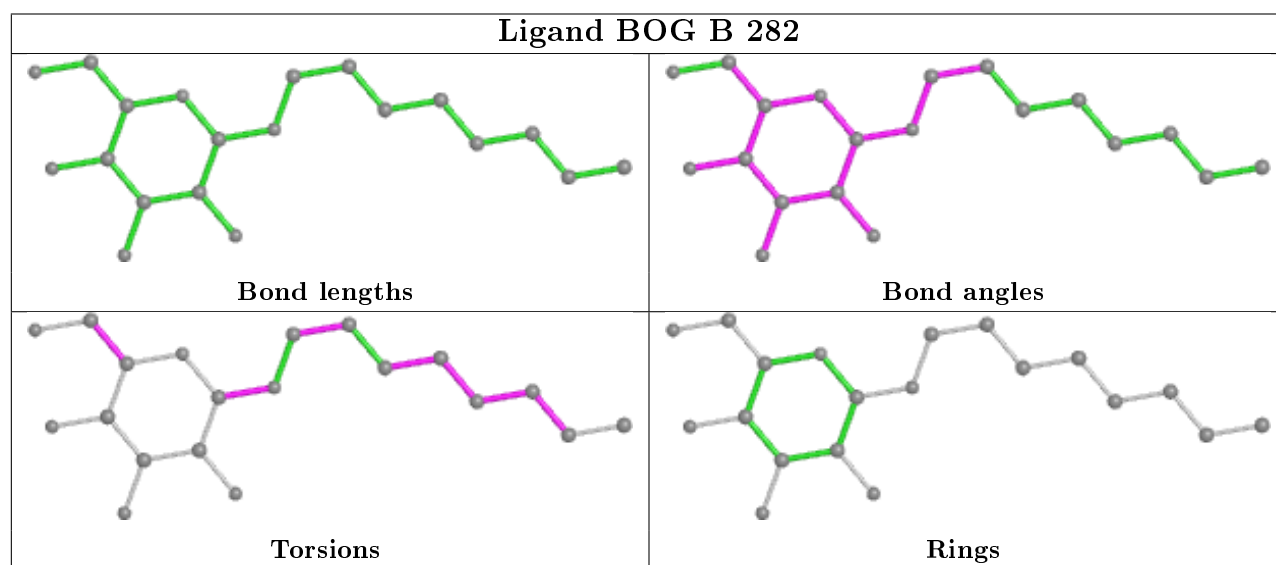
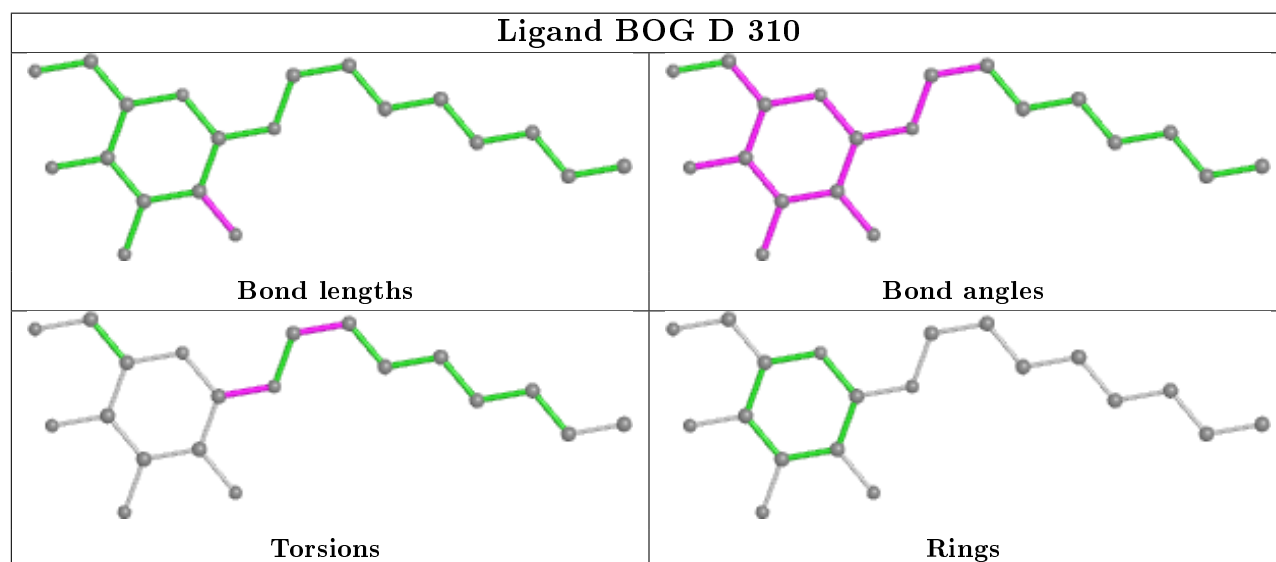
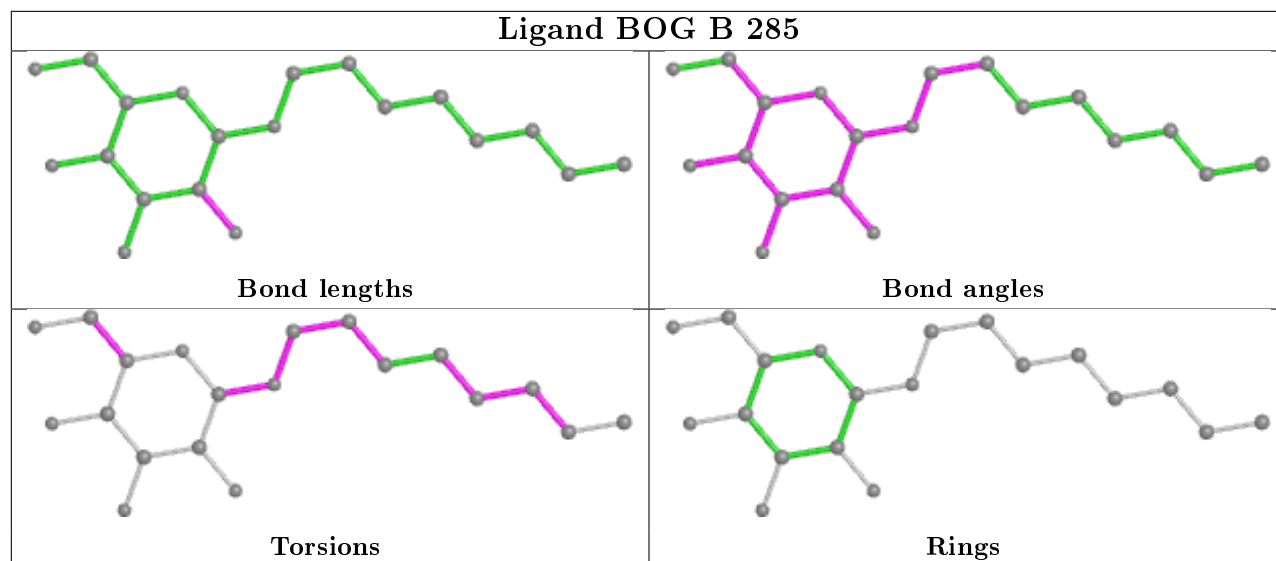












5.7 Other polymers [i](#)

There are no such residues in this entry.

5.8 Polymer linkage issues [i](#)

There are no chain breaks in this entry.

6 Fit of model and data

6.1 Protein, DNA and RNA chains

In the following table, the column labelled ‘#RSRZ> 2’ contains the number (and percentage) of RSRZ outliers, followed by percent RSRZ outliers for the chain as percentile scores relative to all X-ray entries and entries of similar resolution. The OWAB column contains the minimum, median, 95th percentile and maximum values of the occupancy-weighted average B-factor per residue. The column labelled ‘Q< 0.9’ lists the number of (and percentage) of residues with an average occupancy less than 0.9.

Mol	Chain	Analysed	<RSRZ>	#RSRZ>2	OWAB(Å ²)	Q<0.9
1	A	257/280 (91%)	0.42	33 (12%) 3 4	33, 50, 136, 188	0
1	B	255/280 (91%)	0.80	46 (18%) 1 1	33, 48, 167, 231	0
1	C	259/280 (92%)	0.78	49 (18%) 1 1	34, 50, 164, 233	0
1	D	252/280 (90%)	0.92	48 (19%) 1 1	40, 65, 203, 280	0
1	E	256/280 (91%)	0.32	25 (9%) 7 10	36, 57, 107, 139	0
All	All	1279/1400 (91%)	0.65	201 (15%) 2 2	33, 53, 156, 280	0

All (201) RSRZ outliers are listed below:

Mol	Chain	Res	Type	RSRZ
1	B	93	VAL	15.9
1	C	103	LYS	12.9
1	B	97	VAL	12.6
1	A	100	ALA	12.5
1	D	95	ILE	12.2
1	D	101	SER	11.3
1	C	102	GLY	11.0
1	B	94	LEU	10.9
1	D	96	LEU	10.6
1	B	95	ILE	10.5
1	D	94	LEU	10.3
1	D	102	GLY	10.1
1	D	106	TRP	10.0
1	C	101	SER	9.9
1	D	97	VAL	9.8
1	B	102	GLY	9.7
1	C	104	ILE	9.6
1	D	104	ILE	9.0
1	B	106	TRP	8.9
1	A	98	ALA	8.9

Continued on next page...

Continued from previous page...

Mol	Chain	Res	Type	RSRZ
1	D	109	LEU	8.7
1	C	106	TRP	8.4
1	C	277	TYR	8.3
1	D	100	ALA	8.1
1	B	96	LEU	8.1
1	B	99	LYS	8.1
1	A	277	TYR	8.0
1	D	98	ALA	7.6
1	C	108	GLU	7.6
1	B	100	ALA	7.2
1	B	104	ILE	7.0
1	C	273	TYR	7.0
1	C	105	SER	7.0
1	C	25	LYS	6.9
1	D	277	TYR	6.9
1	D	107	LYS	6.6
1	B	98	ALA	6.4
1	D	105	SER	6.3
1	B	109	LEU	6.3
1	C	21	THR	6.2
1	A	104	ILE	5.8
1	C	22	GLY	5.8
1	A	109	LEU	5.8
1	B	26	ALA	5.6
1	D	99	LYS	5.6
1	C	26	ALA	5.6
1	B	101	SER	5.5
1	C	274	TRP	5.5
1	A	101	SER	5.5
1	E	277	TYR	5.5
1	E	24	GLY	5.4
1	E	26	ALA	5.4
1	C	272	TRP	5.4
1	C	279	LYS	5.4
1	D	273	TYR	5.3
1	B	103	LYS	5.3
1	B	92	SER	5.2
1	A	96	LEU	5.2
1	B	277	TYR	5.1
1	C	24	GLY	5.1
1	B	108	GLU	5.1
1	D	93	VAL	5.0

Continued on next page...

Continued from previous page...

Mol	Chain	Res	Type	RSRZ
1	C	98	ALA	5.0
1	C	100	ALA	5.0
1	B	278	LEU	5.0
1	D	91	SER	4.9
1	C	107	LYS	4.9
1	A	95	ILE	4.8
1	D	103	LYS	4.8
1	C	96	LEU	4.6
1	A	278	LEU	4.5
1	B	31	TYR	4.5
1	D	31	TYR	4.5
1	A	106	TRP	4.4
1	B	24	GLY	4.3
1	B	107	LYS	4.3
1	E	31	TYR	4.3
1	C	97	VAL	4.3
1	D	108	GLU	4.3
1	A	99	LYS	4.3
1	B	91	SER	4.2
1	A	92	SER	4.2
1	E	274	TRP	4.1
1	C	278	LEU	4.1
1	E	23	GLU	4.1
1	E	273	TYR	4.0
1	E	102	GLY	4.0
1	C	95	ILE	4.0
1	C	27	LYS	3.9
1	B	276	ILE	3.9
1	D	274	TRP	3.9
1	D	276	ILE	3.9
1	B	28	LYS	3.9
1	A	276	ILE	3.8
1	A	103	LYS	3.8
1	A	107	LYS	3.8
1	E	25	LYS	3.8
1	A	273	TYR	3.7
1	A	25	LYS	3.7
1	E	106	TRP	3.7
1	C	92	SER	3.6
1	B	273	TYR	3.6
1	B	27	LYS	3.6
1	E	236	ALA	3.6

Continued on next page...

Continued from previous page...

Mol	Chain	Res	Type	RSRZ
1	B	272	TRP	3.6
1	C	31	TYR	3.6
1	C	109	LEU	3.6
1	A	31	TYR	3.5
1	C	28	LYS	3.5
1	C	94	LEU	3.5
1	C	276	ILE	3.4
1	D	27	LYS	3.4
1	B	274	TRP	3.4
1	C	99	LYS	3.4
1	B	110	VAL	3.3
1	D	239	ALA	3.3
1	B	78	LEU	3.3
1	D	278	LEU	3.3
1	A	97	VAL	3.3
1	B	105	SER	3.3
1	D	28	LYS	3.3
1	B	46	ILE	3.3
1	D	247	VAL	3.3
1	C	23	GLU	3.2
1	E	111	ARG	3.2
1	E	46	ILE	3.1
1	A	274	TRP	3.1
1	A	24	GLY	3.1
1	C	185	ARG	3.0
1	C	93	VAL	3.0
1	A	22	GLY	3.0
1	E	107	LYS	3.0
1	A	110	VAL	3.0
1	B	198	VAL	3.0
1	A	27	LYS	2.9
1	C	110	VAL	2.9
1	B	74	PHE	2.9
1	E	232	ALA	2.8
1	E	278	LEU	2.8
1	C	46	ILE	2.8
1	D	44	ILE	2.8
1	A	198	VAL	2.7
1	D	78	LEU	2.7
1	D	272	TRP	2.7
1	D	46	ILE	2.6
1	A	108	GLU	2.6

Continued on next page...

Continued from previous page...

Mol	Chain	Res	Type	RSRZ
1	E	234	THR	2.6
1	E	230	PHE	2.6
1	E	173	LEU	2.6
1	D	202	VAL	2.6
1	E	231	TRP	2.5
1	A	105	SER	2.5
1	A	275	LEU	2.5
1	C	111	ARG	2.5
1	D	173	LEU	2.5
1	C	59	HIS	2.4
1	D	224	TYR	2.4
1	A	26	ALA	2.4
1	B	44	ILE	2.4
1	B	25	LYS	2.4
1	E	201	PHE	2.3
1	E	174	VAL	2.3
1	C	76	LEU	2.3
1	C	29	ALA	2.3
1	B	176	LEU	2.3
1	B	202	VAL	2.3
1	C	30	ALA	2.3
1	D	275	LEU	2.3
1	D	92	SER	2.3
1	A	74	PHE	2.2
1	B	174	VAL	2.2
1	C	198	VAL	2.2
1	D	198	VAL	2.2
1	E	97	VAL	2.2
1	D	113	TRP	2.2
1	B	76	LEU	2.2
1	B	173	LEU	2.2
1	B	30	ALA	2.2
1	A	202	VAL	2.2
1	C	77	GLY	2.2
1	D	111	ARG	2.2
1	D	48	PHE	2.2
1	D	74	PHE	2.2
1	D	89	PHE	2.2
1	D	236	ALA	2.2
1	B	172	ILE	2.1
1	C	173	LEU	2.1
1	A	49	VAL	2.1

Continued on next page...

Continued from previous page...

Mol	Chain	Res	Type	RSRZ
1	D	185	ARG	2.1
1	A	91	SER	2.1
1	B	197	PRO	2.1
1	E	44	ILE	2.1
1	D	49	VAL	2.1
1	D	110	VAL	2.1
1	C	112	ASN	2.1
1	B	111	ARG	2.1
1	C	44	ILE	2.1
1	D	60	ASP	2.1
1	E	235	GLY	2.0
1	C	270	GLY	2.0
1	C	73	ALA	2.0

6.2 Non-standard residues in protein, DNA, RNA chains [i](#)

There are no non-standard protein/DNA/RNA residues in this entry.

6.3 Carbohydrates [i](#)

There are no monosaccharides in this entry.

6.4 Ligands [i](#)

In the following table, the Atoms column lists the number of modelled atoms in the group and the number defined in the chemical component dictionary. The B-factors column lists the minimum, median, 95th percentile and maximum values of B factors of atoms in the group. The column labelled 'Q< 0.9' lists the number of atoms with occupancy less than 0.9.

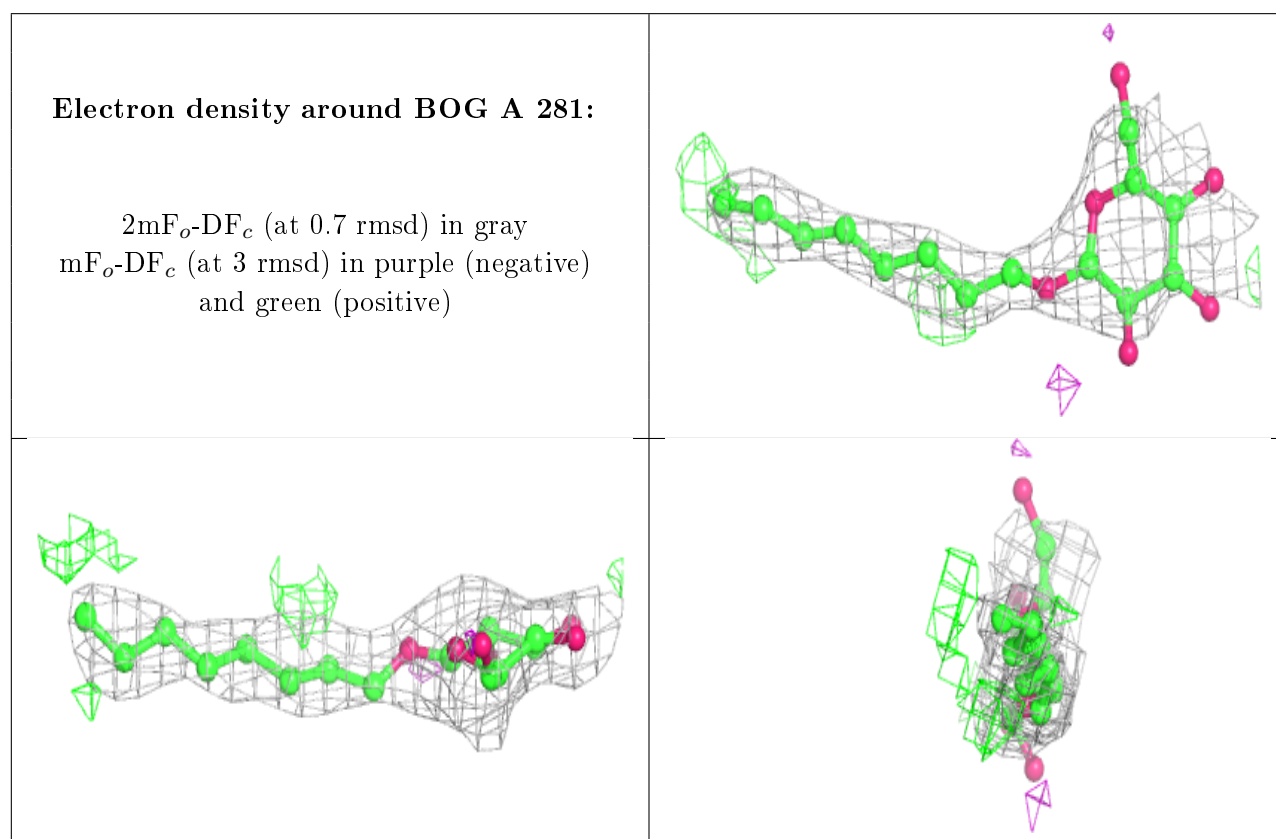
Mol	Type	Chain	Res	Atoms	RSCC	RSR	B-factors(\AA^2)	Q<0.9
2	BOG	A	281	20/20	0.56	0.27	78,116,138,138	0
2	BOG	B	285	20/20	0.62	0.26	53,80,100,104	0
2	BOG	D	281	20/20	0.67	0.22	74,94,132,132	0
2	BOG	E	281	20/20	0.71	0.26	67,105,114,115	0
2	BOG	C	283	20/20	0.76	0.24	77,102,125,125	0
2	BOG	C	281	20/20	0.77	0.26	84,128,147,149	0
2	BOG	B	284	20/20	0.78	0.40	54,105,114,121	0
2	BOG	E	282	20/20	0.80	0.23	83,106,125,125	0
2	BOG	C	282	20/20	0.81	0.16	80,103,113,114	0
2	BOG	B	282	20/20	0.81	0.29	79,105,142,148	0

Continued on next page...

Continued from previous page...

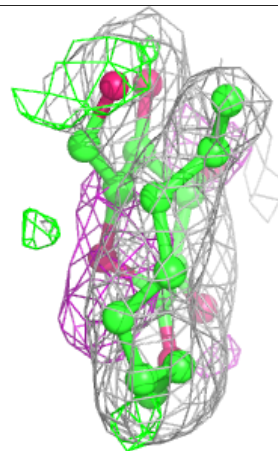
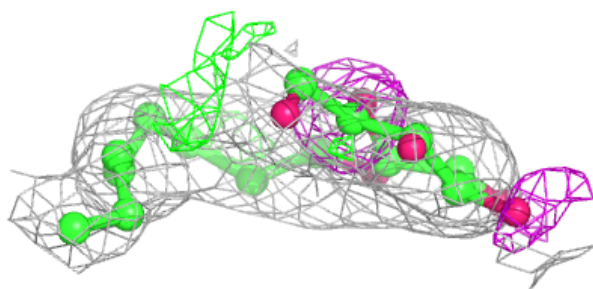
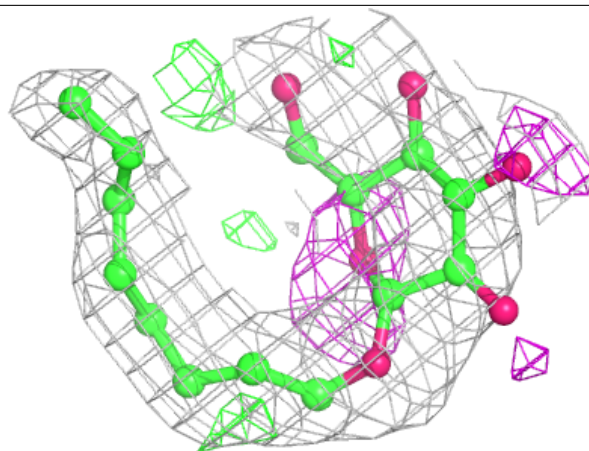
Mol	Type	Chain	Res	Atoms	RSCC	RSR	B-factors(\AA^2)	Q<0.9
2	BOG	A	282	20/20	0.82	0.17	71,76,85,87	0
2	BOG	B	310	20/20	0.83	0.17	54,102,108,109	0
2	BOG	B	283	20/20	0.86	0.19	61,85,95,99	0
2	BOG	D	310	20/20	0.88	0.24	63,105,129,129	0
2	BOG	B	281	20/20	0.88	0.25	64,103,148,149	0
2	BOG	E	310	20/20	0.93	0.13	51,65,89,92	0

The following is a graphical depiction of the model fit to experimental electron density of all instances of the Ligand of Interest. In addition, ligands with molecular weight > 250 and outliers as shown on the geometry validation Tables will also be included. Each fit is shown from different orientation to approximate a three-dimensional view.

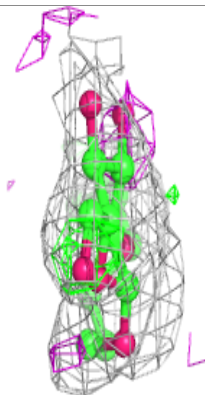
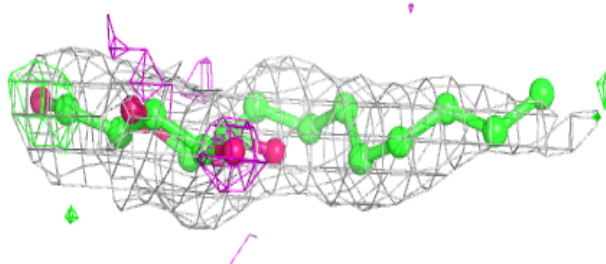
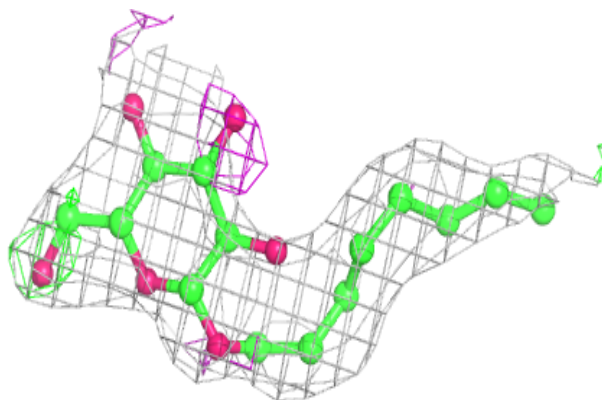


Electron density around BOG B 285:

$2mF_o-DF_c$ (at 0.7 rmsd) in gray
 mF_o-DF_c (at 3 rmsd) in purple (negative)
and green (positive)

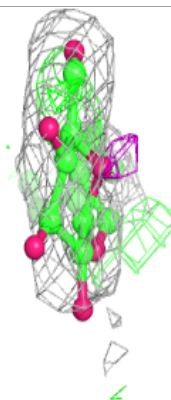
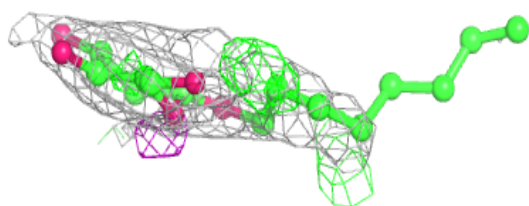
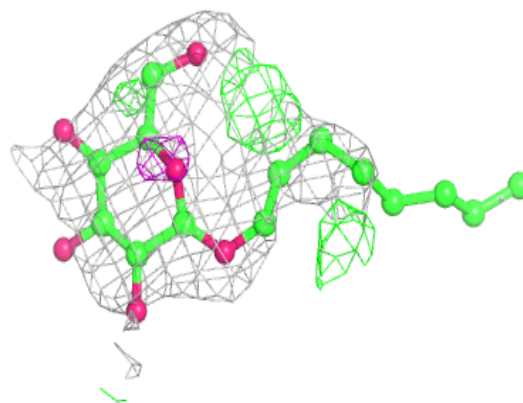
**Electron density around BOG D 281:**

$2mF_o-DF_c$ (at 0.7 rmsd) in gray
 mF_o-DF_c (at 3 rmsd) in purple (negative)
and green (positive)

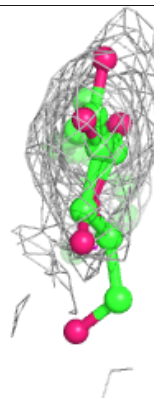
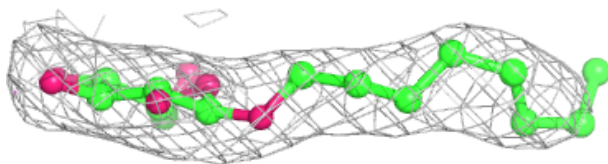
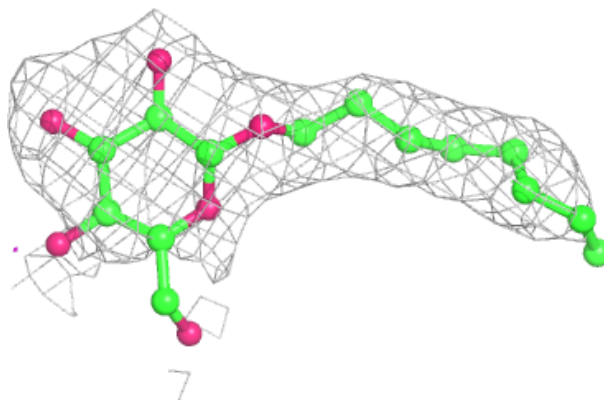


Electron density around BOG E 281:

$2mF_o-DF_c$ (at 0.7 rmsd) in gray
 mF_o-DF_c (at 3 rmsd) in purple (negative)
and green (positive)

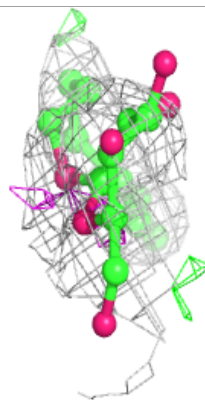
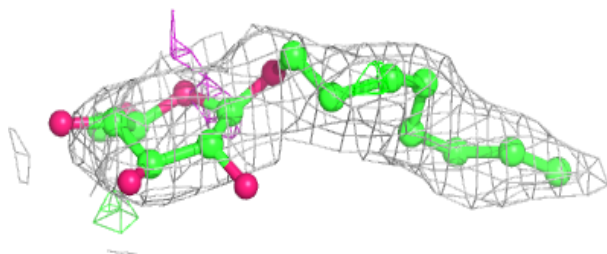
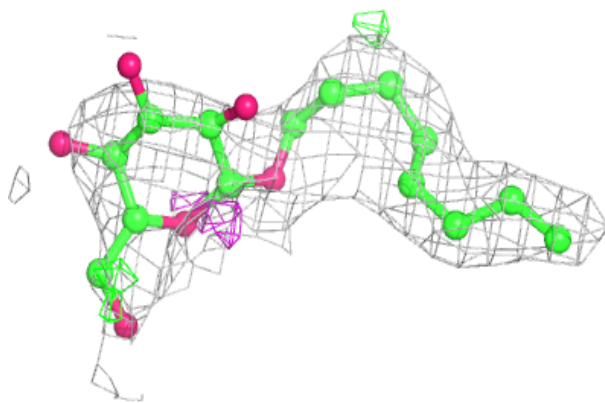
**Electron density around BOG C 283:**

$2mF_o-DF_c$ (at 0.7 rmsd) in gray
 mF_o-DF_c (at 3 rmsd) in purple (negative)
and green (positive)

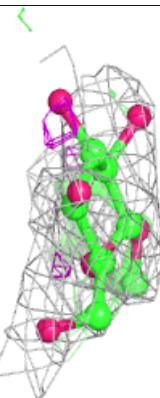
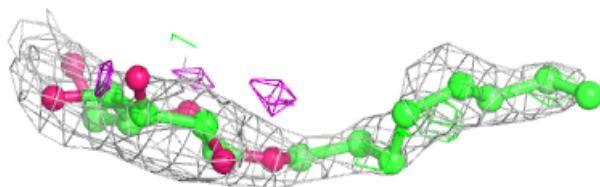
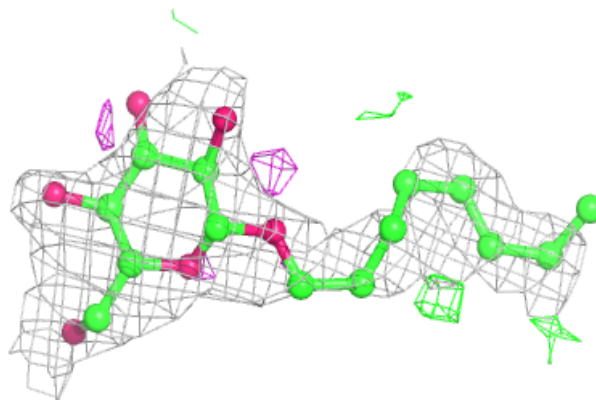


Electron density around BOG C 281:

$2mF_o-DF_c$ (at 0.7 rmsd) in gray
 mF_o-DF_c (at 3 rmsd) in purple (negative)
and green (positive)

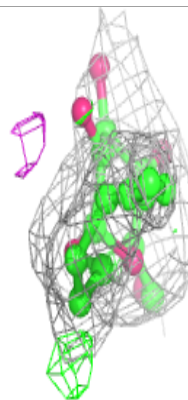
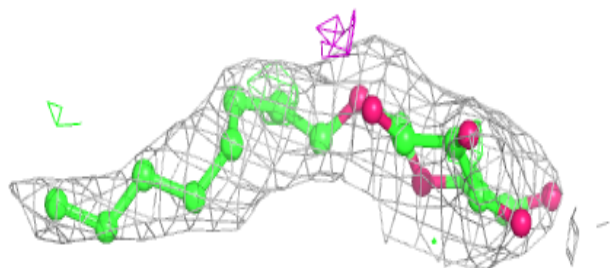
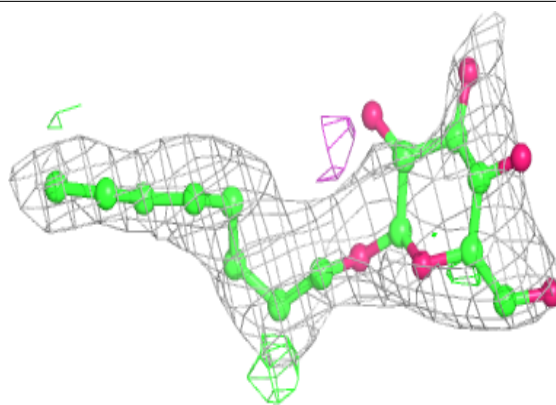
**Electron density around BOG B 284:**

$2mF_o-DF_c$ (at 0.7 rmsd) in gray
 mF_o-DF_c (at 3 rmsd) in purple (negative)
and green (positive)

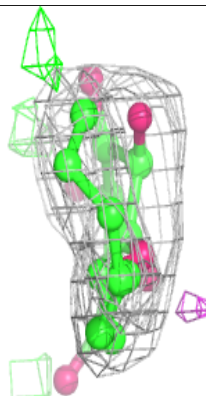
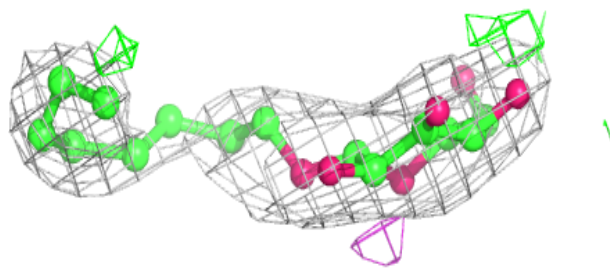
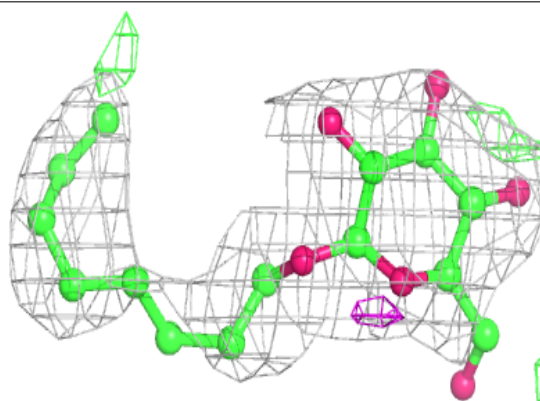


Electron density around BOG E 282:

$2mF_o-DF_c$ (at 0.7 rmsd) in gray
 mF_o-DF_c (at 3 rmsd) in purple (negative)
and green (positive)

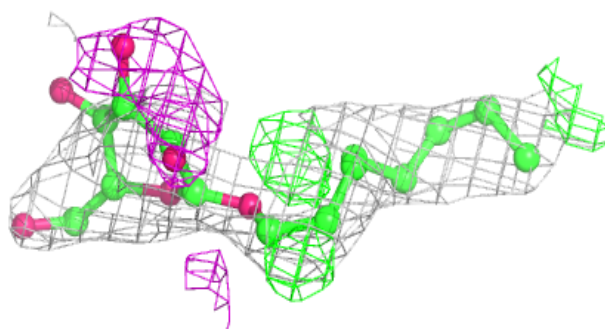
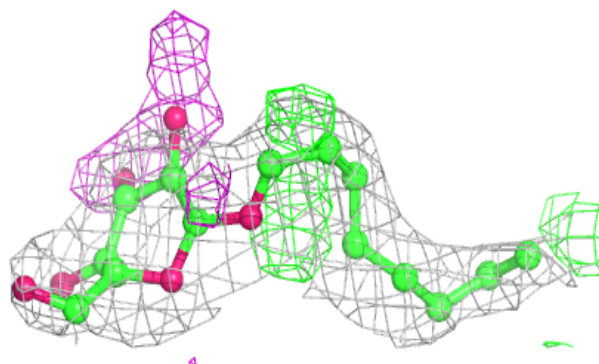
**Electron density around BOG C 282:**

$2mF_o-DF_c$ (at 0.7 rmsd) in gray
 mF_o-DF_c (at 3 rmsd) in purple (negative)
and green (positive)

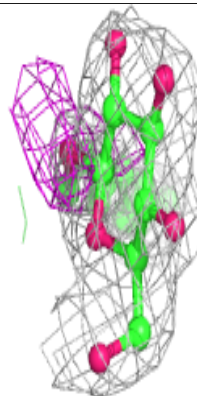
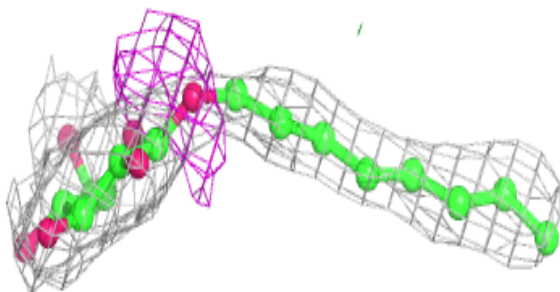
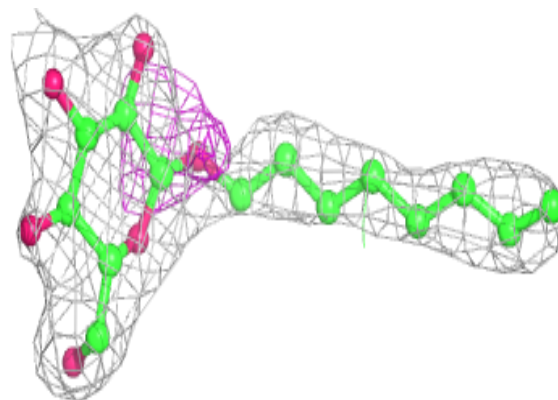


Electron density around BOG B 282:

$2mF_o-DF_c$ (at 0.7 rmsd) in gray
 mF_o-DF_c (at 3 rmsd) in purple (negative)
and green (positive)

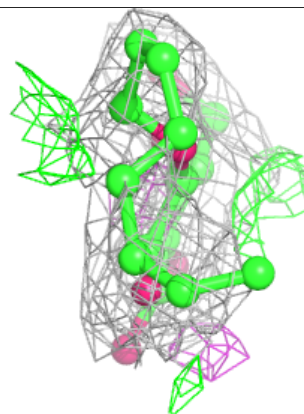
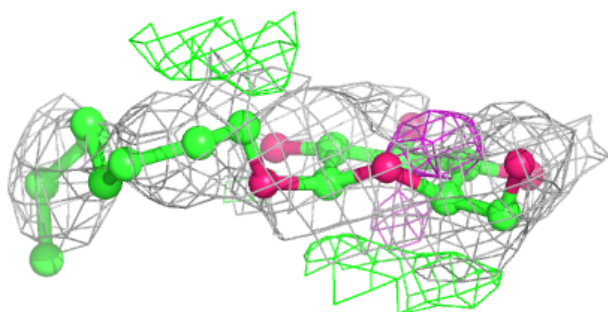
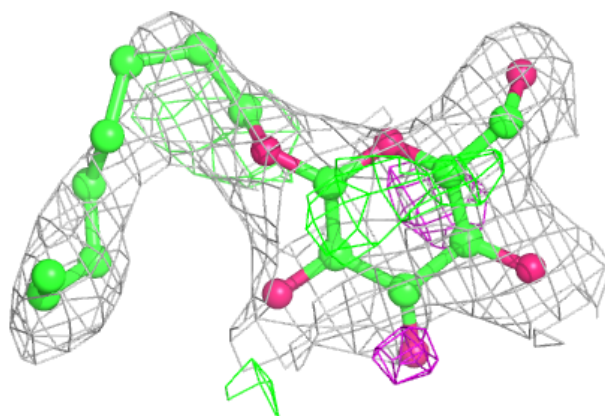
**Electron density around BOG A 282:**

$2mF_o-DF_c$ (at 0.7 rmsd) in gray
 mF_o-DF_c (at 3 rmsd) in purple (negative)
and green (positive)

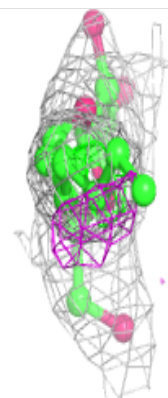
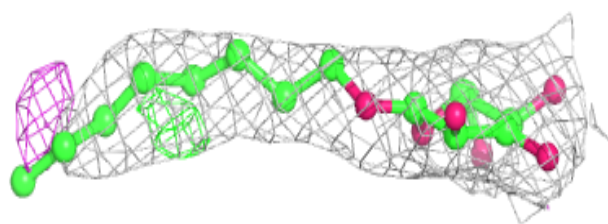
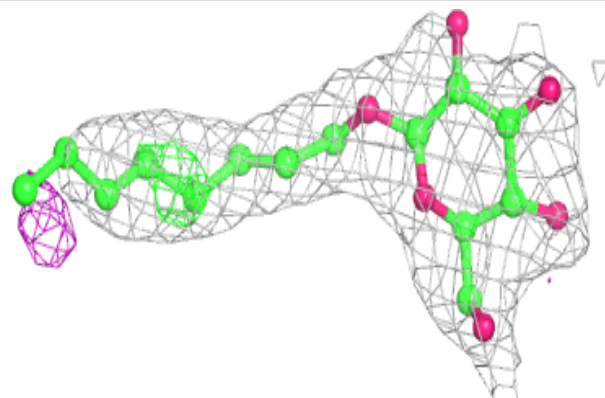


Electron density around BOG B 310:

$2mF_o-DF_c$ (at 0.7 rmsd) in gray
 mF_o-DF_c (at 3 rmsd) in purple (negative)
and green (positive)

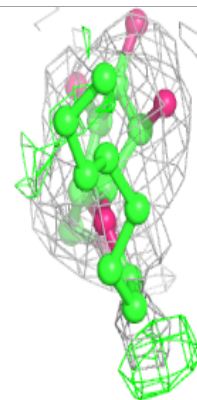
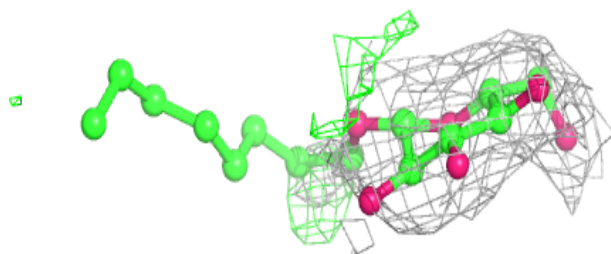
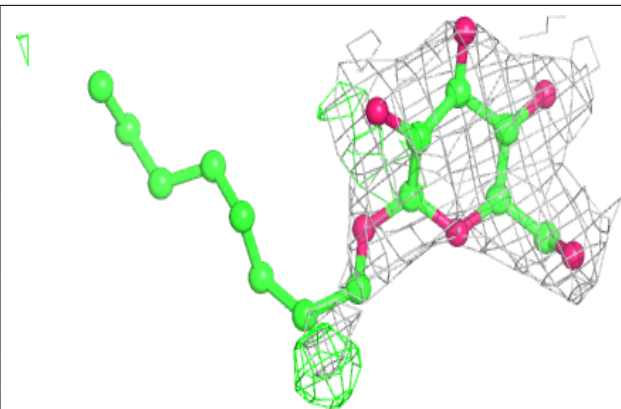
**Electron density around BOG B 283:**

$2mF_o-DF_c$ (at 0.7 rmsd) in gray
 mF_o-DF_c (at 3 rmsd) in purple (negative)
and green (positive)

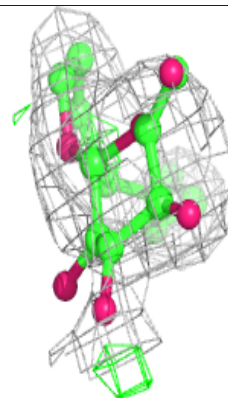
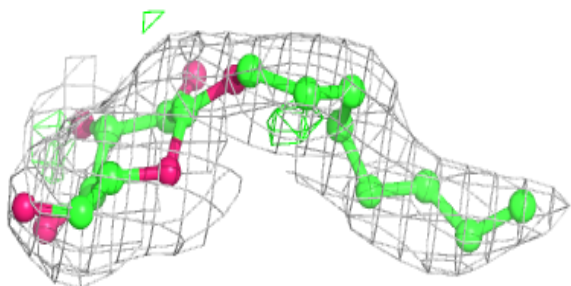


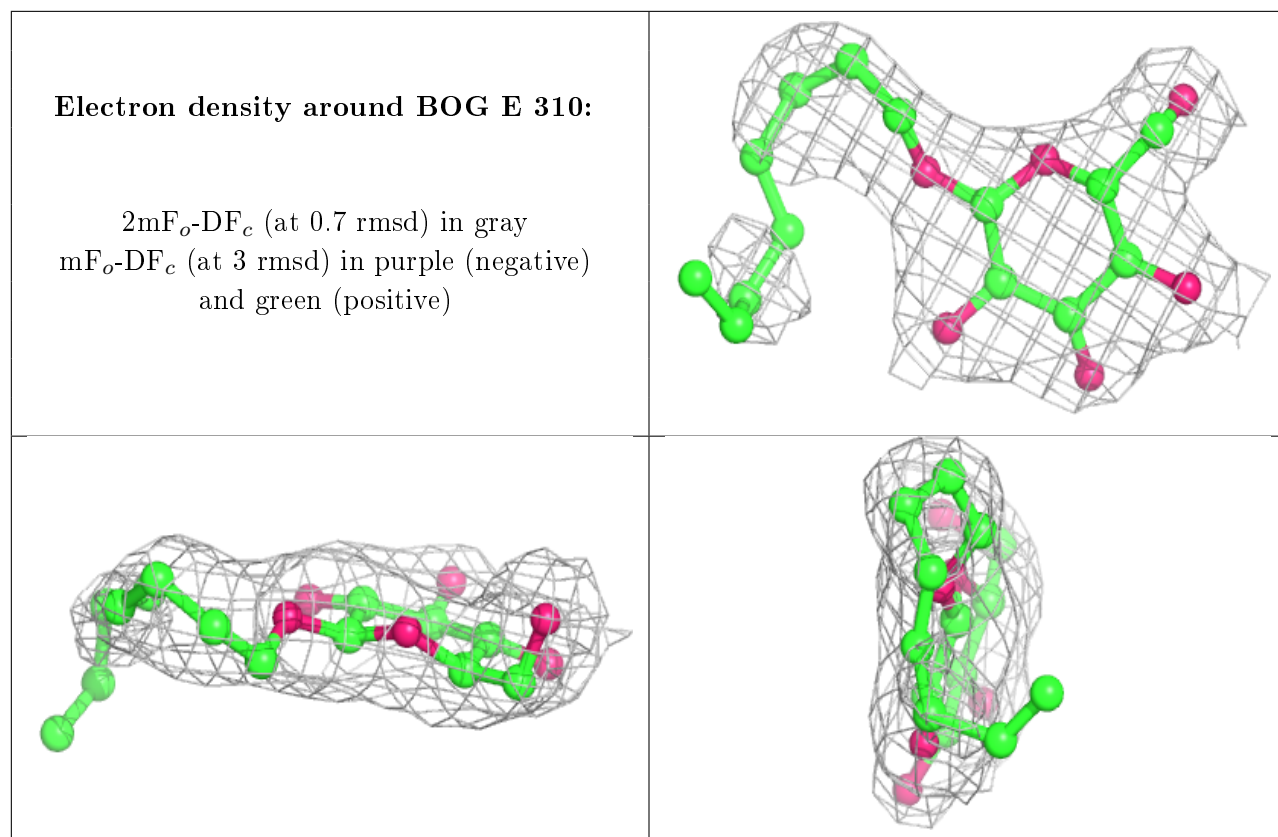
Electron density around BOG D 310:

$2mF_o-DF_c$ (at 0.7 rmsd) in gray
 mF_o-DF_c (at 3 rmsd) in purple (negative)
and green (positive)

**Electron density around BOG B 281:**

$2mF_o-DF_c$ (at 0.7 rmsd) in gray
 mF_o-DF_c (at 3 rmsd) in purple (negative)
and green (positive)





6.5 Other polymers [i](#)

There are no such residues in this entry.